

Statistics						
Description	Symbol	Avg	Max	Min	Max/Min	Avg/Min
DRIVE AISLE	+	1.8 fc	4.1 fc	0.5 fc	8.2:1	3.6:1

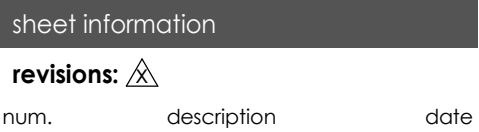


- 1 MENU BOARD. 1" CONDUIT. COORDINATE WITH OWNER AND INSTALLER FOR EXACT REQUIREMENTS.
- 2 SPEAKER POST. 3/4" CONDUIT. COORDINATE WITH OWNER AND INSTALLER FOR EXACT REQUIREMENTS.
- 3 PROVIDE 1" CONDUIT TO SIGN. COORDINATE WITH OWNER AND INSTALLER FOR EXACT REQUIREMENTS.

- 1 THE ELECTRICAL CONTRACTOR SHALL MEET WITH AND COORDINATE WITH ALL SERVICE PROVIDERS (POWER, COMMUNICATION, CABLE/SATELLITE, ETC.) TO THE FACILITY ON SITE PRIOR TO ANY WORK BEING PERFORMED. CONFIRM WITH EACH SERVICE PROVIDER EXACT LOCATION, EQUIPMENT AND ROUTING. COMPLY WITH ALL SERVICE PROVIDER'S CURRENT STANDARDS AND REQUIREMENTS. PROVIDE THE REQUIRED EQUIPMENT, RACEWAYS, BOXES, CABLE, ETC. AS REQUIRED BY THE SERVICE PROVIDER WHETHER SHOWN ON THE DRAWINGS OR NOT.
- 2 FOR ALL LIGHT FIXTURES, POLE LIGHTS, AND ALL OTHER ELECTRICAL DEVICES THE CONTRACTOR SHALL COORDINATE EXACT LOCATION AND MOUNTING HEIGHTS WITH ARCHITECT, OWNER, ENGINEER, AND ALL OF THE CONTRACT DOCUMENTS PRIOR TO ROUGH IN AND TRENCHING.
- 3 CONTRACTOR IS RESPONSIBLE FOR ALL TRENCHING, BACKFILL, AND COMPACTION ASSOCIATED TO ALL ELECTRICAL UNDERGROUND RACEWAYS AND CABLES COORDINATE WITH ARCHITECTURAL AND CIVIL DRAWINGS. SEE UNDERGROUND RACEWAY DETAILS FOR REQUIREMENTS FOR EACH TRENCH.
- 4 CONTRACTOR SHALL INSTALL POLE MOUNTED LIGHTS IN STRAIGHT LINES, SQUARE, AND PLUMB. COORDINATE WITH ARCHITECT AND CIVIL DRAWINGS.
- 5 THE ELECTRICAL CONTRACTOR SHALL HAVE ANY AND ALL CONCRETE POLE BASES AND SLABS REVIEWED BY A STRUCTURAL ENGINEER AND SHALL MODIFY DESIGN PER STRUCTURAL ENGINEER'S AND/OR A.H.'S RECOMMENDATIONS.
- 6 PROVIDE WITH UL 942 LISTED EMERGENCY BATTERY BACKUP ALL EXTERIOR FIXTURES ADJACENT TO EGRESS DOORS.
- 7 ALL EXTERIOR RECEPTACLES SHOWN SHALL BE NEMA 5-20R GFCI "WEATHER RESISTANT" RECEPTACLE WITH "WEATHER PROOF IN-USE COVER".
- 8 THE ELECTRICAL CONTRACTOR IS RESPONSIBLE FOR ALL CONCRETE/ASPHALT CUTTING AND REPLACEMENT OF CONCRETE/ASPHALT TO MATCH EXISTING ASSOCIATED WITH UNDERGROUND RACEWAYS PROVIDED AS PART OF THIS PROJECT.
- 9 REFER TO PLANS FOR CONSTRAINTS ON PHYSICAL DIMENSIONS AND CLEARANCE REQUIREMENTS OF EQUIPMENT. PROVIDE EQUIPMENT DIMENSIONS THAT FALL WITHIN THE CONSTRAINTS OF EACH SPECIFIC LOCATION.
- 10 PROVIDE SERVICE RATED EQUIPMENT AT EACH SERVICE ENTRANCE.
- 11 SERVICE EQUIPMENT SHALL BE LEGIBLY MARKED IN THE FIELD WITH THE MAXIMUM AVAILABLE FAULT CURRENT. VERIFY OR RE-CALCULATE THE AVAILABLE FAULT CURRENT AT THE SERVICE WHERE MODIFICATIONS TO THE ELECTRICAL INSTALLATION OCCUR. PLEASE INCLUDE NOTES IN THE ELECTRICAL DRAWINGS OR SUPPLY CALCULATIONS WHERE APPLICABLE SEE NEC 110.24.(B)



## 1 PARKING LOT LIGHT POLE BASE DETAIL



520 NW Chipman Rd  
Lee's Summit, MO 64086

sheet title:

# ES101