

**Lee's Summit High School
Building Signage Application (#PL2021-422)**

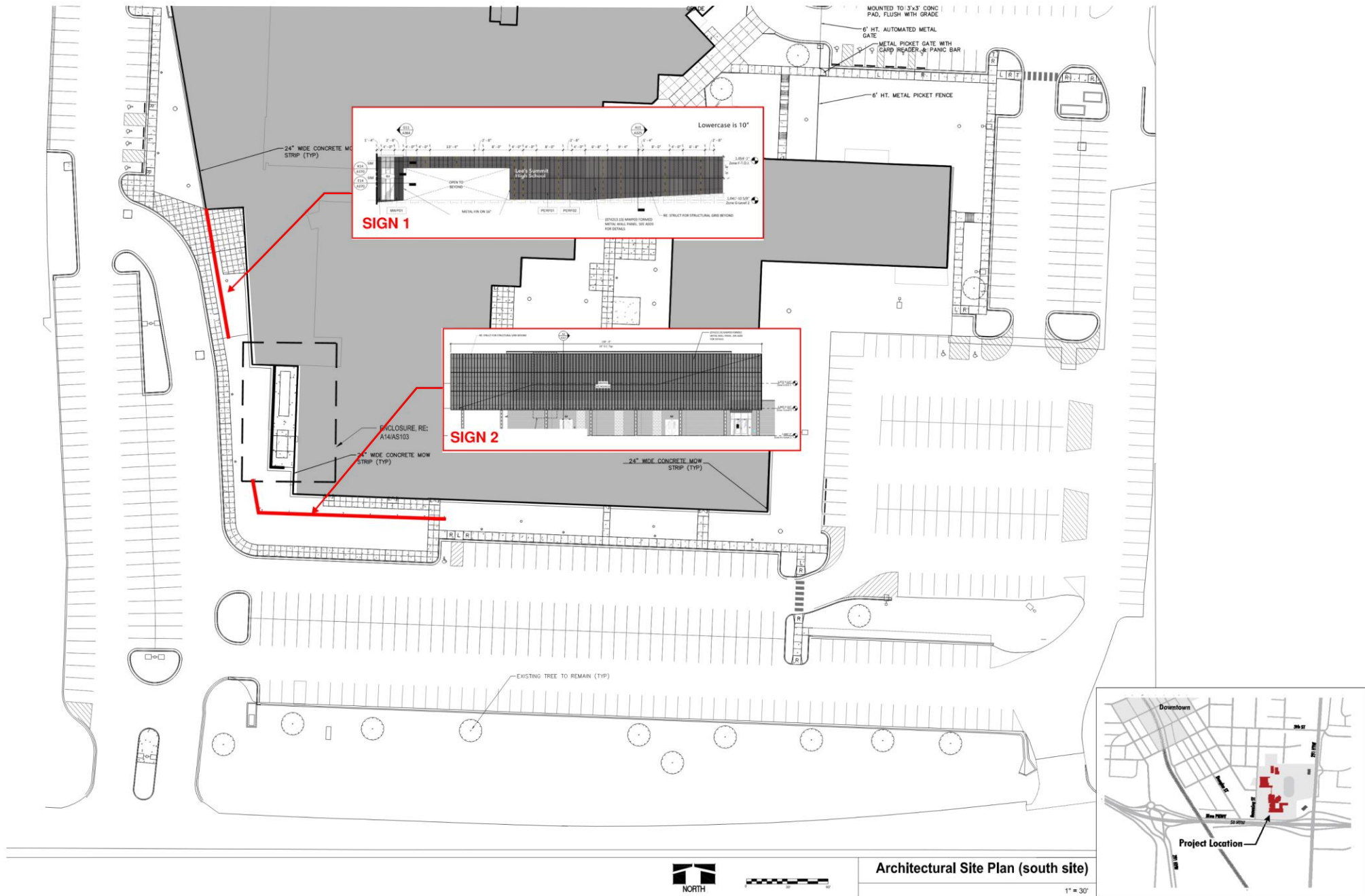
Gould Evans, applicant

Lee's Summit Planning Commission Meeting
Dec. 2, 2021



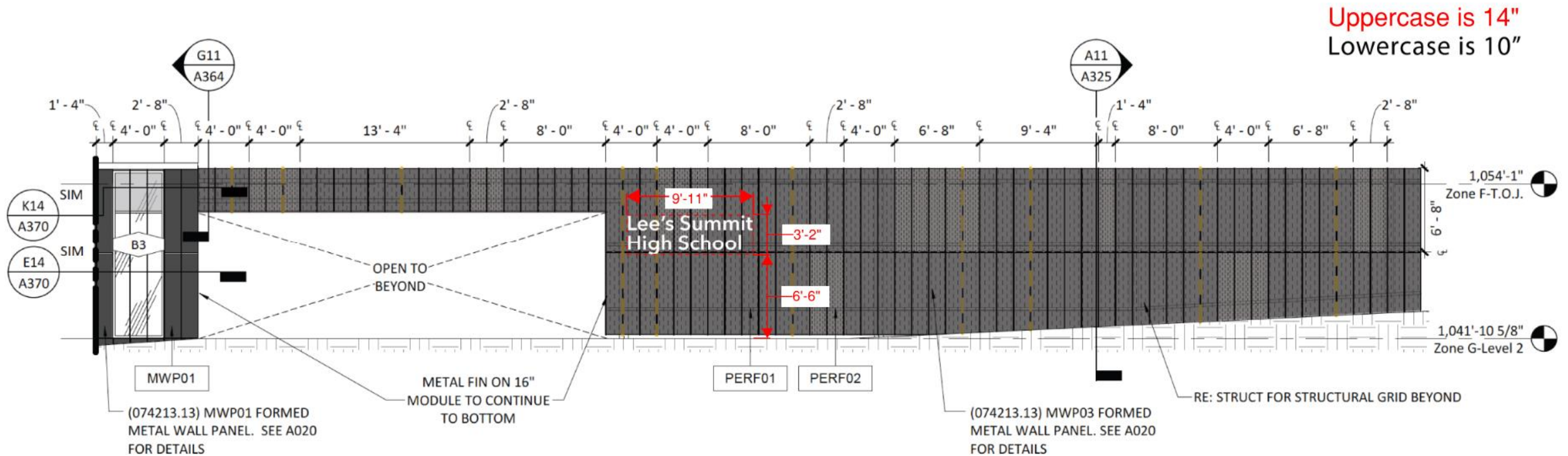
291

50 Highway

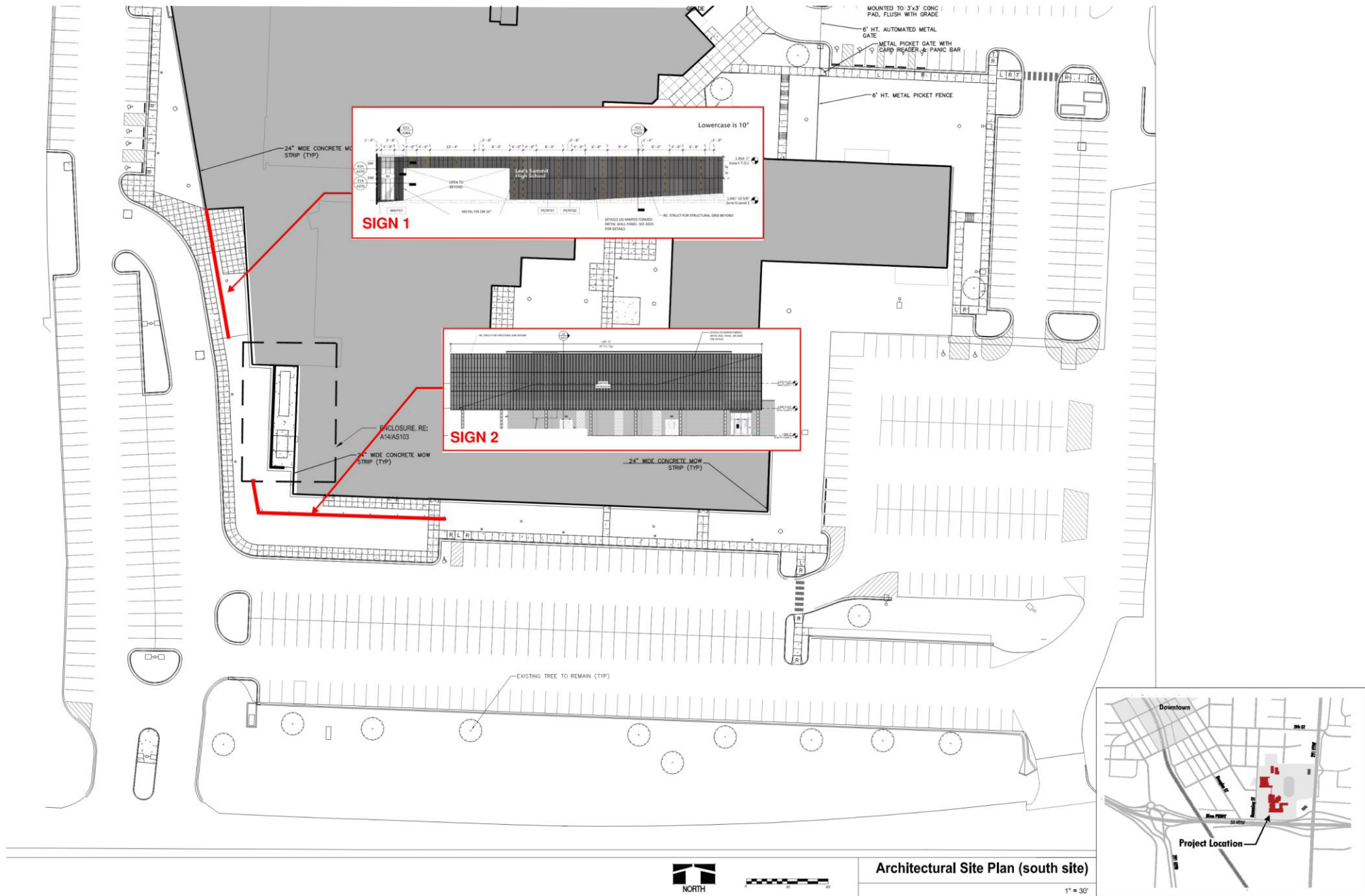




Sign 1 | west student entry building sign

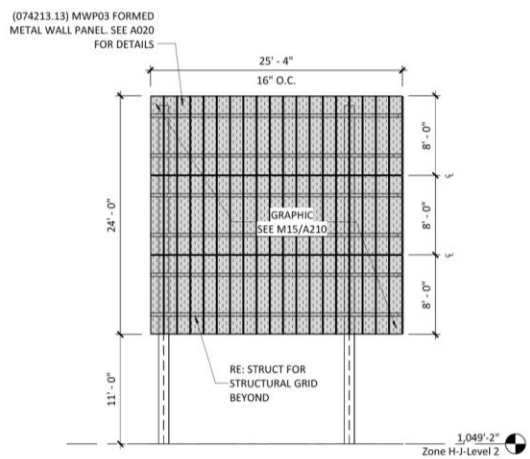


Sign 1 | west student entry building sign

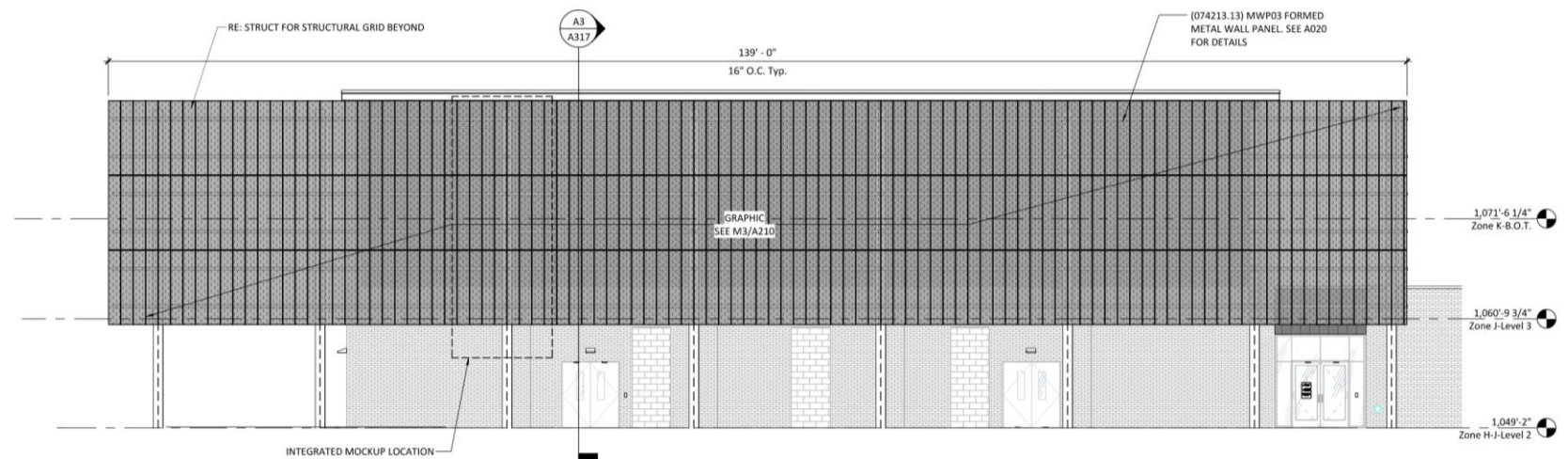




Sign 2 | south entry graphic



Scrim West



Scrim South

