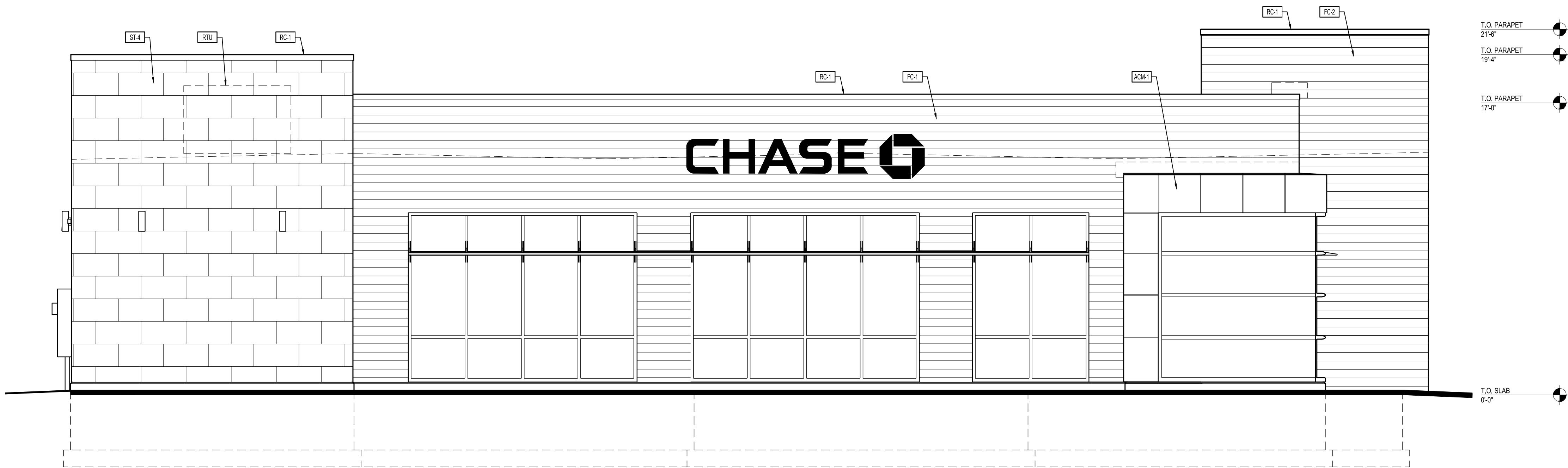


EXTERIOR FINISH MATERIALS		
ST-4	MANUFACTURED THIN STONE VENEER	
	MANUFACTURER	CORONADO STONE PRODUCTS
	PRODUCT	CHISELED LIMESTONE
	COLOR	CREAM
	SIZE	24" WIDE x 12" HIGH x 1" THICK
	GROUT	1/4" NOMINAL JOINTS WITH FULL SMOOTH TOOLED COLOR-MATCHED PORTLAND CEMENT GROUT
	NOTES	RUNNING BOND MANUFACTURED THIN STONE FIELD-CUT TO MAX. LENGTHS POSSIBLE WITH BUTTED AND LAPPED INSIDE CORNERS AND MANUFACTURER'S FABRICATED RETURN CORNER PIECES- MITERED CORNERS ARE NOT ACCEPTABLE- PLACE CONTROL JOINTS AS RECOMMENDED BY THE MANUFACTURER- REFER TO WALL SECTIONS AND DETAILS
ST-4 ALTERNATE	MANUFACTURED THIN STONE VENEER ALTERNATE	
	MANUFACTURER	BORAL CULTURED STONE
	PRODUCT	HEWN STONE
	COLOR	FOUNDATION
	SIZE	22" WIDE x 5" HIGH x 1.25" THICK
	GROUT	1/4" NOMINAL JOINTS WITH FULL SMOOTH TOOLED COLOR-MATCHED PORTLAND CEMENT GROUT
	NOTES	1/3-OFFSET RUNNING BOND MANUFACTURED THIN STONE FIELD-CUT TO MAX. LENGTHS POSSIBLE WITH BUTTED AND LAPPED INSIDE CORNERS AND MANUFACTURER'S FABRICATED RETURN CORNER PIECES- MITERED CORNERS ARE NOT ACCEPTABLE- PLACE CONTROL JOINTS AS RECOMMENDED BY THE MANUFACTURER- REFER TO WALL SECTIONS AND DETAILS
FC-1	FIBER CEMENT PANEL- DARK	
	MANUFACTURER	NICHIHA FIBER CEMENT
	PRODUCT	VINTAGEWOOD AWP 1818 (AVAILABLE AS AWP 3030 FOR NON-PROTOTYPICAL PROJECTS)
	COLOR	BARK
	SIZE	18" NOMINAL x 72" NOMINAL AND 120" NOMINAL
	NOTES	INCLUDE 3.5" MANUFACTURED CORNERS AND MANUFACTURER'S "ESSENTIAL" FLASHING SYSTEM.
FC-2	FIBER CEMENT PANEL- LIGHT	
	MANUFACTURER	NICHIHA FIBER CEMENT
	PRODUCT	VINTAGEWOOD AWP 1818 (AVAILABLE AS AWP 3030 FOR NON-PROTOTYPICAL PROJECTS)
	COLOR	ASH
	SIZE	18" NOMINAL x 72" NOMINAL AND 120" NOMINAL
	NOTES	INCLUDE 3.5" MANUFACTURED CORNERS AND MANUFACTURER'S "ESSENTIAL" FLASHING SYSTEM.
RC-1	ROOF COPING	
	MANUFACTURER	PETERSEN ALUMINUM / PAC-CLAD
	PRODUCT	PAC-CONTINUOUS
	COLOR	MATTE BLACK STEEL / BLACK ALUMINUM
ACM-1	ALUMINUM COMPOSITE MATERIAL	
	MANUFACTURER	ARCONIC ARCHITECTURAL PRODUCTS
	PRODUCT	REYNOBOND
	COLOR	DURAGLOSS 5000 DG SILVER



2 EXTERIOR ELEVATION
1/4" = 1'-0"



1 EXTERIOR ELEVATION
1/4" = 1'-0"

PREPARED BY:
EBI Consulting

ENVIRO BUSINESS, INC.
21 B Street | Burlington, MA 01803
Tel: (781) 275-2500 | www.ebiconsulting.com

DRAWINGS AND SPECIFICATIONS ARE THE PROPERTY AND COPYRIGHT OF ENVIROBUSINESS, INC. NO PART OF THIS DOCUMENT MAY BE REPRODUCED OR TRANSMITTED IN ANY FORM OR BY ANY MEANS, ELECTRONIC OR MECHANICAL, WITHOUT THE WRITTEN CONSENT OF ENVIROBUSINESS, INC. ALL RIGHTS ARE RESERVED.

SIGNED BY:

DATE:
NAME:
LICENSE NUMBER:

PRYOR RD & LOWENSTEIN DR

900 NW PRYOR ROAD
LEE'S SUMMIT, MO 64081

EBI JOB #4121000090

ISSUE	DATE	DESCRIPTION

CHASE

PRYOR & LOWENSTEIN
PROTOTYPE VERSION 20.4

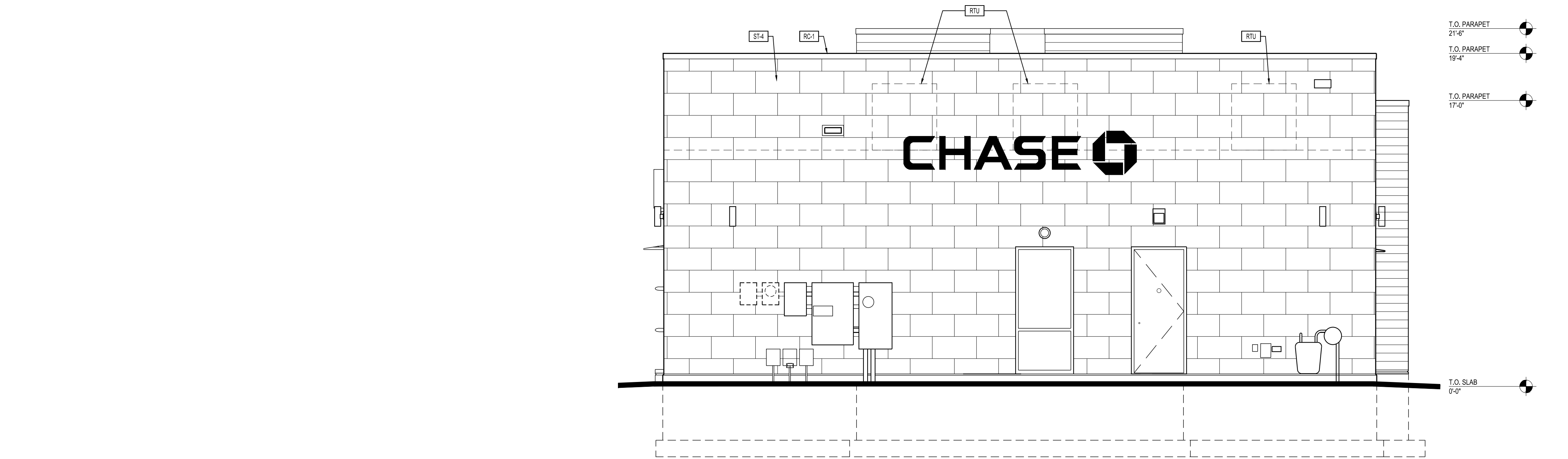
CONTENTS

EXTERIOR ELEVATIONS

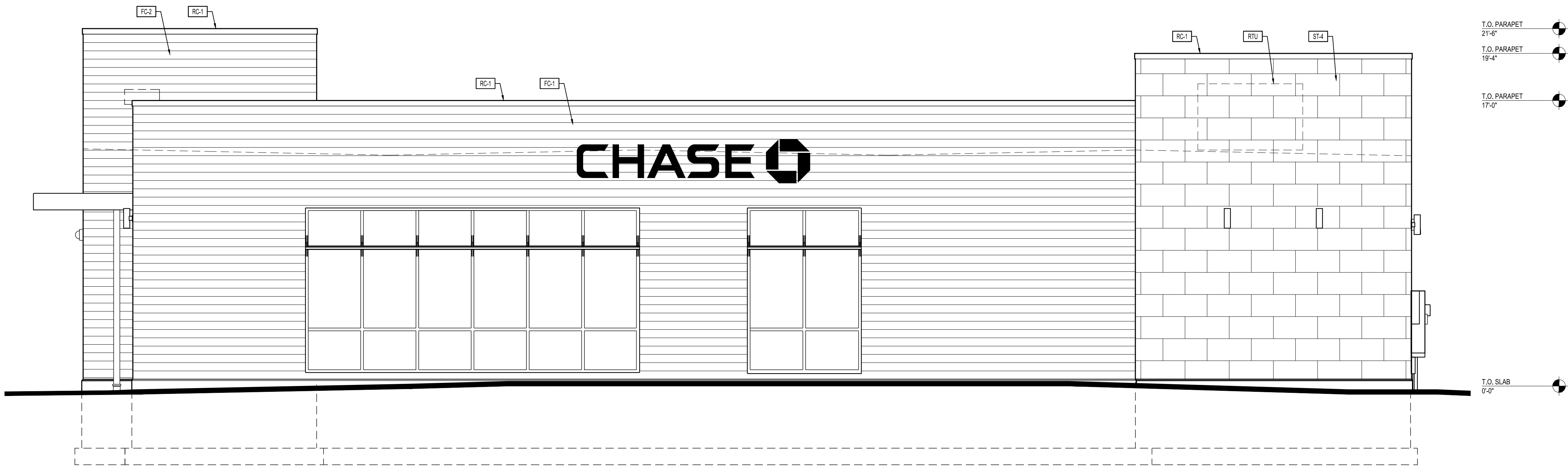
10/12/2021

SHEET

A2.1



2
A2.2
EXTERIOR ELEVATION
1/4" = 1'-0"



1
A2.2
EXTERIOR ELEVATION
1/4" = 1'-0"

PREPARED BY:
EBI Consulting

ENVIRO BUSINESS, INC.
21 B Street | Burlington, MA 01803
Tel: (781) 273-2500 | www.ebiconsulting.com

DRAWINGS AND SPECIFICATIONS ARE THE PROPERTY AND COPYRIGHT OF ENVIROBUSINESS, INC. AND ARE TO BE USED ONLY FOR THE PROJECT AND SITE SPECIFICALLY IDENTIFIED HEREIN. NO PART OF THIS DOCUMENT MAY BE REPRODUCED OR TRANSMITTED IN ANY FORM OR BY ANY MEANS, ELECTRONIC OR MECHANICAL, WITHOUT THE EXPRESS WRITTEN CONSENT OF ENVIROBUSINESS, INC. ALL RIGHTS ARE RESERVED.

SIGNED BY:

DATE:

NAME:

LICENSE NUMBER:

PRYOR RD & LOWENSTEIN DR

900 NW PRYOR ROAD
LEE'S SUMMIT, MO 64081

EBI JOB #4121000090

ISSUE	DATE	DESCRIPTION

CHASE

PRYOR & LOWENSTEIN
PROTOTYPE VERSION 20.4

CONTENTS

EXTERIOR ELEVATIONS

10/12/2021

SHEET

A2.2