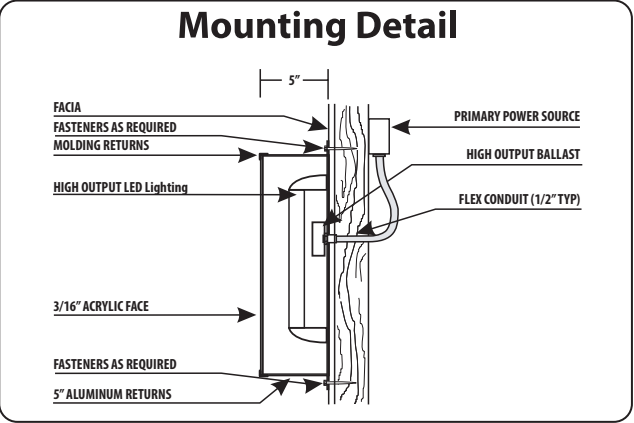


Outdoor Signage The Crack Shack - 9th & 9th

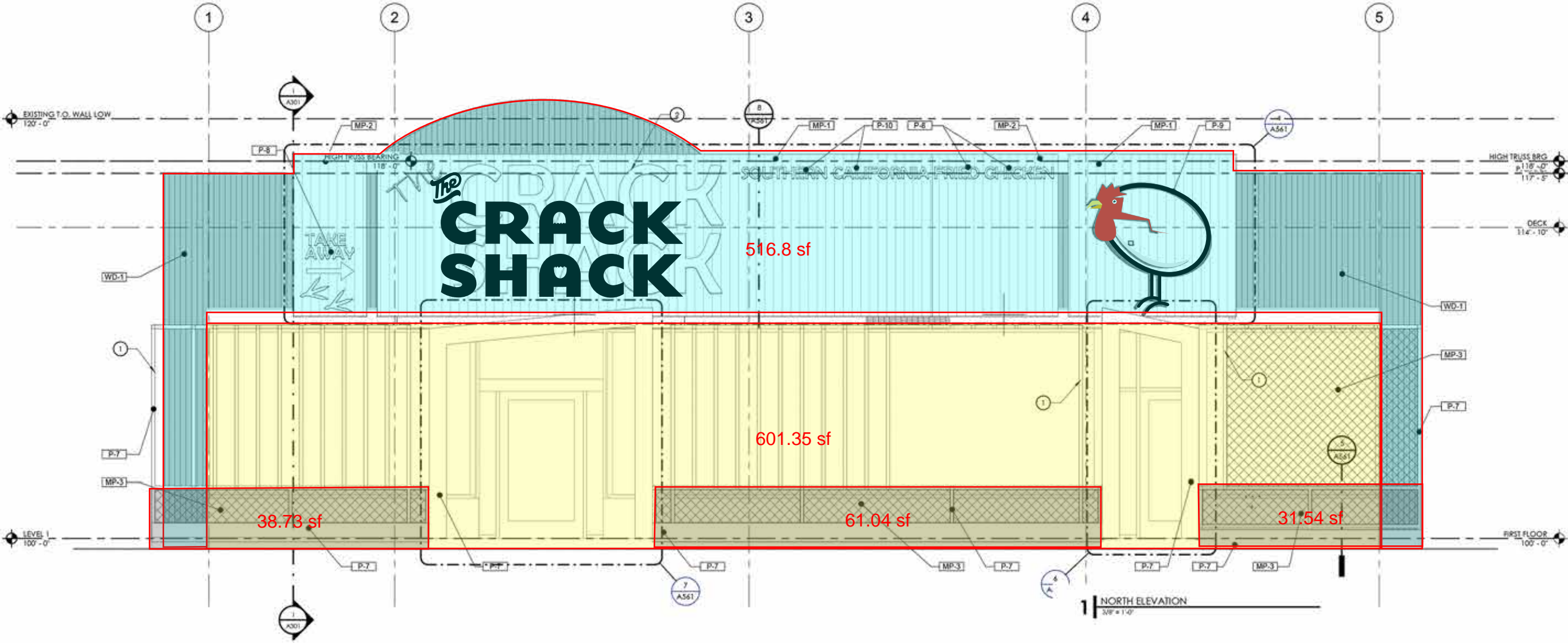
Pan Channel Letters

- STANDARD FEATURES:**
- Exterior Cabinets: Black 0.40 aluminum returns - 5" with 0.63 aluminum back
 - 1" Black trim cap
 - Faces: Black/ White Acrylic
 - Illumination: L.E.D. Lighting
- INSTALLATION:**
- Mounted through stucco to wood wall into studs
 - 3/16" x 4" STS Grabber Screws
 - 3/16" Cement Anchors
- ELECTRICAL:**
- Carries UL listings



OPTION

CRACK SHACK



Outdoor Signage The Crack Shack - 9th & 9th

Pan Channel Letters

- STANDARD FEATURES:**
- Exterior Cabinets: Black 0.40 aluminum returns - 5" with 0.63 aluminum back
 - 1" Black trim cap
 - Faces: Black/ White Acrylic
 - Illumination: L.E.D. Lighting
- INSTALLATION:**
- Mounted through stucco to wood wall into studs
 - 3/16" x 4" STS Grabber Screws
 - 3/16" Cement Anchors
- ELECTRICAL:**
- Carries UL listings

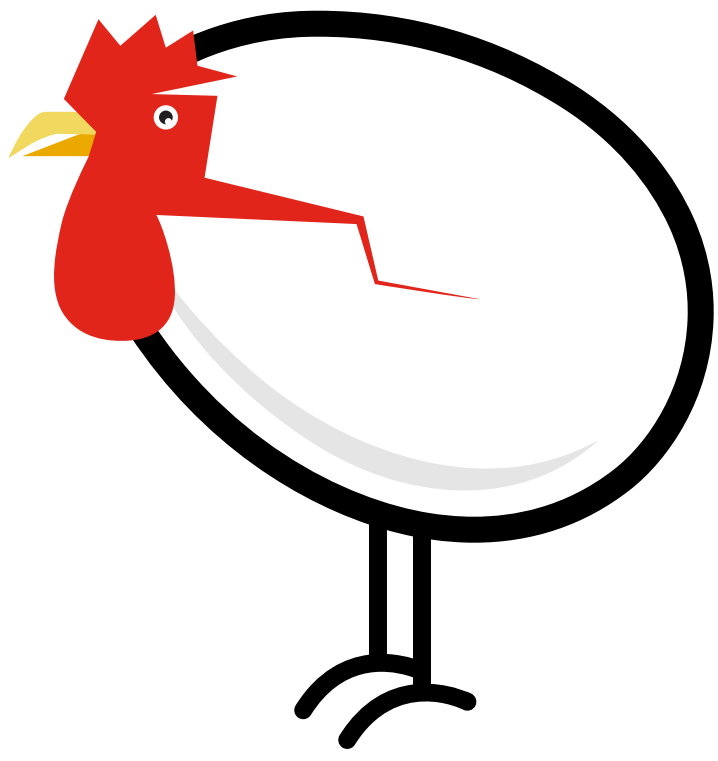
OPTION

The
CRACK
SHACK

The
CRACK
SHACK

144.5"

71.5"



70.87"

