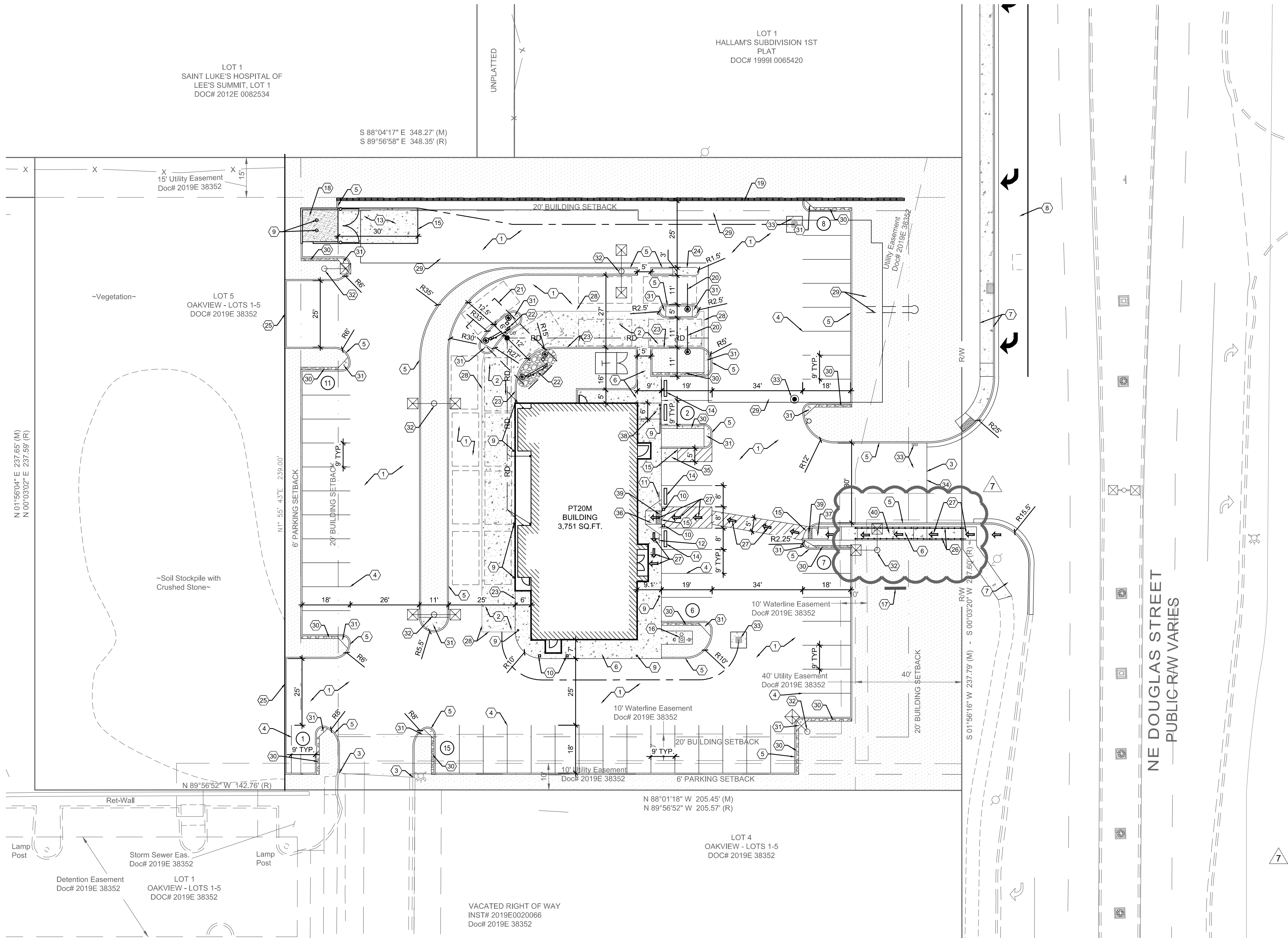


N:\031624049701-Lees Summit, MO\Docs\CAD\Civil\04 - Site Dimension Plan.dwg, 9/28/2021 4:24 PM, drozin, kevin



LEGEND

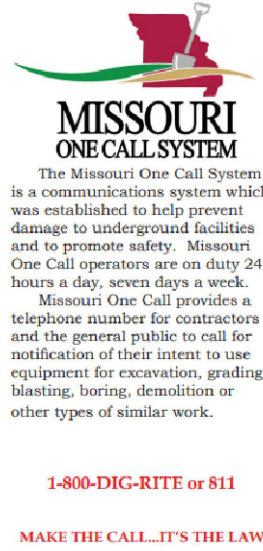
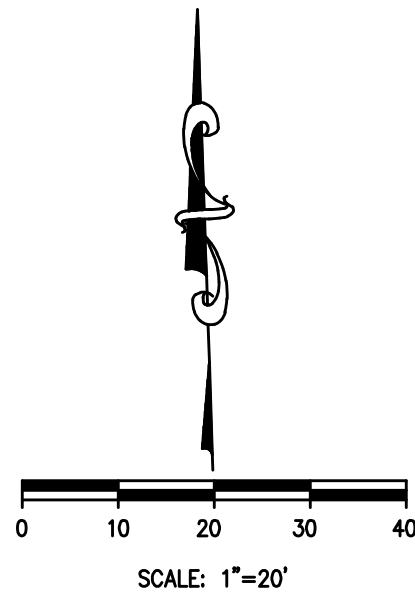
EXISTING	PROPOSED	DESCRIPTION
		PROPERTY LINE
		RIGHT-OF-WAY LINE
		FENCE
		LIGHT POLE
		SEEDING/LANDSCAPING AREA, SEE LANDSCAPE PLAN
		CONCRETE
		STRUCTURAL CONCRETE

PARKING DATA

	REQUIRED	PROVIDED*
STANDARD	50	48
HANDICAP	3	2
TOTAL	53	50
14 PARKING SPACE REQUIRED PER 1,000 S.F. OF GROSS FLOOR AREA.		
*FEWER SPACES ALLOWABLE IF EVIDENCE OF SUCCESS ON SIMILAR PROJECTS CAN BE PROVIDED		

SITE DATA

	SQ. FT.	ACRES	PERCENT
TOTAL SITE AREA	60,774	1.40	-
EXISTING PERVIOUS	60,774	1.40	100.0
EXISTING IMPERVIOUS	0	0.00	0.0
TOTAL PROPOSED PERVIOUS	13,427	0.31	22.1
TOTAL PROPOSED IMPERVIOUS	47,347	1.09	77.9
FLOOR AREA RATIO (FAR)	0.06 (3760/60774)		



GENERAL NOTES:

- ALL EXISTING CONDITIONS, TOPOGRAPHY, UTILITIES AND PROPERTY INFORMATION ARE TAKEN FROM A SURVEY OF LAND SITUATED IN THE CITY OF LEE'S SUMMIT, COUNTY OF JACKSON, AND STATE OF MISSOURI, BY SURVEYOR: YOUNG - HOBBS AND ASSOCIATES, 1202 CROSSLAND AVE., CLARKSVILLE, TN 37040, PHONE: (931) 645-2524
- CONTRACTOR IS RESPONSIBLE FOR LOCATING AND VERIFYING ALL EXISTING UNDERGROUND UTILITIES PRIOR TO CONSTRUCTION, AND IS RESPONSIBLE FOR ANY DAMAGE TO THEM DURING CONSTRUCTION.
- PROVIDE SMOOTH TRANSITION FROM NEWLY PAVED AREAS TO EXISTING PAVED AREAS AS NECESSARY. THE EXISTING EDGE OF PAVEMENT SHALL BE FREE OF ALL LOOSE DEBRIS AT ALL AREAS WHERE PROPOSED PAVEMENT MEETS EXISTING PAVEMENT. THE EDGE OF EXISTING ASPHALT PAVEMENT SHALL BE PROPERLY SEALED WITH A TACK COAT MATERIAL IN ALL AREAS WHERE NEW ASPHALT PAVEMENT IS INDICATED TO JOIN EXISTING.
- ALL DIMENSIONS TO FACE OF CURB AND/OR EDGE OF PAVEMENT UNLESS OTHERWISE NOTED.
- CONTRACTOR SHALL BE SOLELY RESPONSIBLE FOR AND TAKE ALL PRECAUTIONS NECESSARY TO AVOID DAMAGE TO ADJACENT PROPERTIES DURING THE CONSTRUCTION PHASES OF THIS PROJECT.
- REFER TO ARCHITECTURAL DRAWINGS FOR BUILDING DIMENSIONS AND ADDITIONAL INFORMATION.
- ALL CONSTRUCTION METHODS AND MATERIALS MUST CONFORM TO CURRENT STANDARDS AND SPECIFICATIONS OF THE FEDERAL, STATE, COUNTY, CITY OR LOCAL REQUIREMENTS, WHICHEVER HAS JURISDICTION.
- ALL EXCAVATED AREAS TO BE SEEDED AND/OR SODDED AFTER FINISH GRADING UNLESS OTHERWISE NOTED. ALL NEWLY SEEDED/SODDED AREAS SHALL HAVE A MINIMUM OF 4" OF TOPSOIL. HOLD SOIL DOWN 1" FROM PAVEMENT ELEVATION. CONTRACTOR TO SUPPLY STRAW MULCH WHERE GRASS SEED HAS BEEN PLANTED.
- ALL RADII ARE 3.0 FEET UNLESS OTHERWISE SHOWN. ALL RADII INDICATED ON PLANS SHALL BE CONSTRUCTED AS CIRCULAR ARCS.

KEYED NOTES:

- PROPOSED HEAVY DUTY ASPHALT PAVEMENT, SEE DETAIL ON SHEET C-9.
- PROPOSED HEAVY DUTY CONCRETE PAVEMENT, SEE DETAIL ON SHEET C-6.
- PROPOSED ASPHALT PAVEMENT TO BE FLUSH WITH EXISTING.
- PROPOSED PAINTED PARKING STRIPING (TYPICAL). ALL PARKING STRIPES ARE TO BE 4" HIGH-BUILD PAINTED WHITE, UNLESS OTHERWISE NOTED ON THE PLANS, DETAILS OR SPECIFICATIONS.
- PROPOSED 6" STRAIGHT CURB PER CITY OF LEE'S SUMMIT STANDARD DRAWING GEN-4 TYPE C-1, SEE DETAIL ON SHEET C-9.
- PROPOSED CONCRETE SIDEWALK, SEE DETAIL ON SHEET C-9.
- PROPOSED CONCRETE SIDEWALK, SEE DEVELOPER ROADWAY PLANS FOR MORE DETAILS.
- PROPOSED RIGHT-TURN LANE, SEE DEVELOPER ROADWAY PLANS FOR MORE DETAILS.
- PROPOSED BOLLARD, TYP. OF 8. SEE ARCHITECTURAL AND STRUCTURAL PLANS FOR DETAILS.
- PROPOSED ILLUMINATED BOLLARD, TYP. OF 4. SEE ARCHITECTURAL AND STRUCTURAL PLANS FOR DETAILS.
- GENERAL CONTRACTOR TO PROVIDE AND INSTALL (1) POLE-MOUNTED HANDICAP PARKING SIGNS. SIGNS PROVIDED BY CONTRACTOR TO MEET LOCAL REQUIREMENTS, SEE DETAIL ON SHEET C-9.
- GENERAL CONTRACTOR TO PROVIDE AND INSTALL (1) POLE-MOUNTED HANDICAP PARKING SIGN WITH "VAN ACCESSIBLE" SIGN. SIGNS PROVIDED BY CONTRACTOR TO MEET LOCAL REQUIREMENTS, SEE DETAIL ON SHEET C-9.
- CONCRETE DUMPSTER ENCLOSURE APRON. SEE DETAIL ON SHEET C-9.
- PROPOSED PRE-CAST CONCRETE WHEEL STOP (TYP. OF 8), SEE DETAIL ON SHEET C-9.
- CONCRETE TO BE FLUSH WITH ADJACENT ASPHALT PAVEMENT.
- FLAGPOLE WITH GROUND-MOUNTED LIGHTS, UNITEDFLAG AND BANNER, GARRISON TYPE OR OWNER APPROVED EQUAL, 30" HIGH, 5" BUTT ALUMINUM WITH 14 GAUGE ALUMINUM BALL FINIAL. INCLUDE ALUMINUM ROLLER AND SLEEVE. HARDWARE TO INCLUDE STATIONARY STRUCK, NYLON FLAGSNAPS, AND HALYARDS. ENTIRE ASSEMBLY (INCLUDING FOUNDATION) TO CONFORM TO APPLICABLE CODES, INCLUDING WIND LOADS. SEE ARCHITECTURAL AND STRUCTURAL PLANS FOR DETAILS.
- PROPOSED MONUMENT SIGN, CONTRACTOR TO COORDINATE WITH OWNER. SEE ELECTRICAL PLANS AND SIGNAGE PACKAGE FOR DETAILS.
- PROPOSED DUMPSTER ENCLOSURE AND CONCRETE PAD. SEE ARCHITECTURAL AND STRUCTURAL PLANS FOR DETAILS.
- PROPOSED 215' REDI-ROCK RETAINING WALL WITH PEDESTRIAN RAILING. SEE GRADING PLAN ON SHEET C-6 FOR WALL HEIGHT.
- PROPOSED HEADACHE BAR. SEE ARCHITECTURAL PLANS FOR DETAILS.
- PROPOSED MENU BOARD CANOPY. SEE ARCHITECTURAL PLANS FOR DETAILS.
- PROPOSED EXTERIOR MENU BOARD. SEE ARCHITECTURAL PLANS FOR DETAILS.
- PROPOSED 8" MONOLITHIC CURB, SEE DETAIL ON SHEET C-11.
- ROLL BACK CURB PER CITY OF PER LEE'S SUMMIT STANDARD DRAWING GEN-4 TYPE CG-2, SEE DETAIL ON SHEET C-9.
- TEMPORARY ASPHALT CURB, SEE DETAIL ON SHEET C-9.
- PROPOSED PEDESTRIAN HANDRAIL TO COMPLY WITH ADA 2010 STANDARDS, SECTION 4.8. CONTRACTOR TO SUBMIT THE HANDRAIL DESIGN TO THE ARCHITECT/ENGINEER FOR REVIEW.
- ADA ACCESSIBLE PEDESTRIAN ROUTE.
- CONCRETE TO BE FLUSH WITH ADJACENT ASPHALT PAVEMENT, SEE DETAIL ON SHEET C-11.
- PROPOSED UNDERGROUND STORAGE, SEE DETAILS ON SHEETS C-12 AND C-13.
- 1" WIDE CRUSHED GRANITE STRIP, SEE DETAIL ON SHEET C-11.
- CONCRETE ISLAND NOSE. SEE DETAIL ON SHEET C-11.
- LIGHTPOLE AND FOUNDATION SEE STRUCTURAL PLANS FOR DETAILS.
- PROPOSED STORM SEWER STRUCTURE, SEE SITE GRADING PLAN, SHEET C-6 FOR MORE INFORMATION.
- PRIVATE SITE AND DEVELOPER WORK INTERFACE.
- RAMP WITH ADA STRIPING, SEE DETAIL ON SHEET C-11.
- CURB RAMP A, SEE DETAIL ON SHEET C-11.
- CURB RAMP B, SEE DETAIL ON SHEET C-11.
- CONCRETE WALK RAMP NOT TO EXCEED 8.33% AND 2.00% CROSS-SLOPE.
- PROPOSED DETECTABLE WARNING SURFACE PER MODOT ITEM 608.50.
- CURB RAMP C, SEE DETAIL ON SHEET C-11.

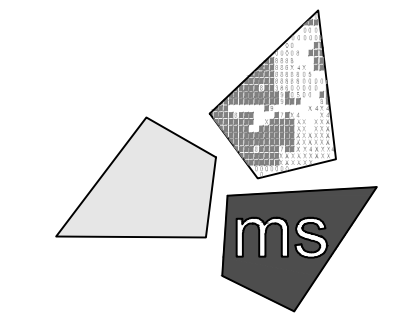
RELEASE FOR CONSTRUCTION
AS NOTED ON PLANS REVIEW
DEVELOPMENT SERVICES
LEE'S SUMMIT, MISSOURI
09/29/2021

REVISION/DATE/DESCRIPTION

60% Plan Set	10/20/20
90% Plan Set	11/17/20
100% Plan Set/Bid Set	12/16/20
Issue for Construction	04/26/21
Bulletin 2	06/04/21
Bulletin 3	06/25/21
Bulletin 4	07/08/21
Bulletin 6	08/26/21
Bulletin 7	09/28/21

NOTICE

THIS ARCHITECTURAL AND ENGINEERING DRAWING IS GIVEN IN CONFIDENCE AND SHALL BE USED ONLY PURSUANT TO THE AGREEMENT WITH THE ARCHITECT. NO OTHER USE, DISSEMINATION, OR DUPLICATION MAY BE MADE WITHOUT PRIOR WRITTEN CONSENT OF THE ARCHITECT. ALL COMMON LAW RIGHTS OF COPYRIGHT AND OTHERWISE ARE HEREBY SPECIFICALLY RESERVED.



ms consultants, inc.
engineers, architects, planners
2221 Schrock Road
Columbus, Ohio 43229-1547
phone 614.898.7100
fax 614.898.7570

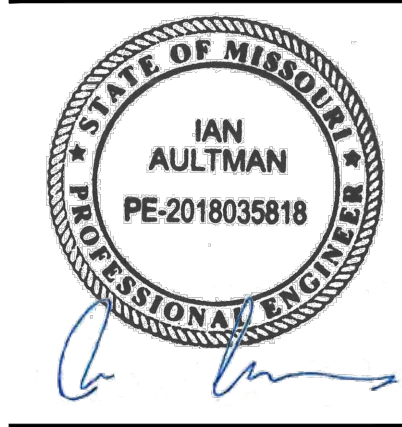
PROJECT

**WHATABURGER
PT20M BUILDING**

**1460 NE DOUGLAS ST.
LEE'S SUMMIT, MO
64086**

SHEET TITLE

SITE DIMENSION PLAN



DRAWN BY: LLK/AMA

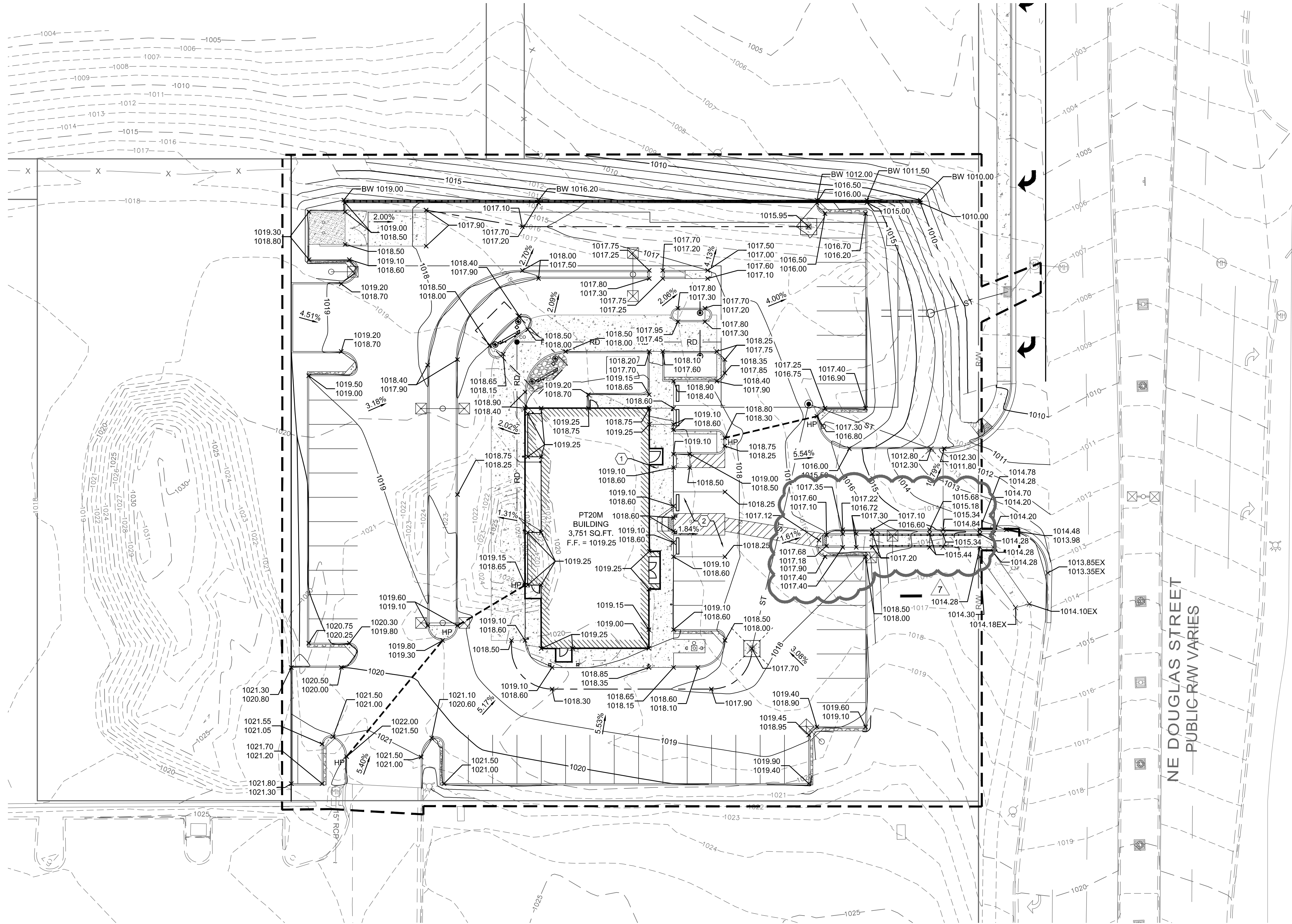
CHECKED BY: KEA

PROJECT NO: 40497-01

DRAWING

C-4

N:\031624049701-Lees Summit, MO\Docs\CAD\Civil\06 - Site Grading Plan.dwg, 9/28/2021 4:23 PM, drozin, kevin



GENERAL NOTES:

- ALL EXISTING CONDITIONS, TOPOGRAPHY, UTILITIES AND PROPERTY INFORMATION ARE TAKEN FROM A SURVEY OF LAND SITUATED IN THE CITY OF LEE'S SUMMIT, COUNTY OF JACKSON, AND STATE OF MISSOURI, BY SURVEYOR: YOUNG - HOBBS AND ASSOCIATES, 1202 CROSSLAND AVE., CLARKSVILLE, TN 37040, PHONE: (931) 645-2524
- ALL CONSTRUCTION METHODS AND MATERIAL MUST CONFORM TO CURRENT STANDARDS AND SPECIFICATIONS OF THE FEDERAL, STATE, COUNTY, CITY OR LOCAL REQUIREMENTS, WHICHEVER HAS JURISDICTION.
- ALL PROPOSED SPOT ELEVATIONS SHOWN ARE TOP OF CURB AND FINAL GRADE ELEVATIONS UNLESS OTHERWISE NOTED.
- CONTRACTOR IS RESPONSIBLE FOR LOCATING AND VERIFYING ALL EXISTING UNDERGROUND UTILITIES PRIOR TO CONSTRUCTION.
- CONTRACTOR TO VERIFY ALL EXISTING GRADES AND CONTACT ENGINEER PRIOR TO BEGINNING WORK IF DISCREPANCY IS FOUND. CONTRACTOR TO VERIFY ASSUMED FINISHED FLOOR ELEVATION PRIOR TO BEGINNING WORK.
- THE EXCAVATING CONTRACTOR MUST TAKE PARTICULAR CARE WHEN EXCAVATING IN AND AROUND EXISTING UTILITY LINES AND EQUIPMENT. VERIFY COVER REQUIREMENTS BY UTILITY CONTRACTORS AND/OR UTILITY COMPANIES SO AS TO NOT CAUSE DAMAGE.
- THE CONTRACTOR SHALL NOTIFY ALL UTILITY COMPANIES 48 HOURS BEFORE CONSTRUCTION IS TO START. TO VERIFY IF ANY UTILITIES ARE PRESENT ON SITE. ALL VERIFICATIONS (LOCATION, SIZE AND DEPTH) SHALL BE MADE BY THE APPROPRIATE UTILITY COMPANIES. WHEN EXCAVATION IS AROUND OR OVER EXISTING UTILITIES, THE CONTRACTOR MUST NOTIFY THE UTILITY SO A REPRESENTATIVE OF THAT UTILITY COMPANY CAN BE PRESENT TO INSTRUCT AND OBSERVE DURING CONSTRUCTION.
- ALL WORK SHALL BE PERFORMED FROM PRIVATE PROPERTY. ALL TRAFFIC LANES MUST REMAIN OPEN AT ALL TIMES.
- CONTRACTOR IS RESPONSIBLE FOR ANY DAMAGE TO THE EXISTING UTILITIES DURING CONSTRUCTION AND ALL DAMAGE SHALL BE REPAIRED TO ORIGINAL CONDITION AT NO ADDITIONAL COST TO THE OWNER OR CITY.
- ALL EXISTING UTILITIES ARE TAKEN FROM SURVEY AND DO NOT NECESSARILY REPRESENT ALL UNDERGROUND UTILITIES ADJACENT TO OR UPON PREMISES SHOWN ON PLAN.

KEYED NOTES:

- CONTRACTOR TO MAINTAIN 2.00% MAX CROSS SLOPE ON SIDEWALK.
- CONTRACTOR TO MAINTAIN MAX 2.00% SLOPE IN ALL DIRECTIONS IN HANDICAP ACCESSIBLE AREA.

LEGEND

EXISTING	PROPOSED	DESCRIPTION
ST	ST	STORM LINE
HP	HP	STORM STRUCTURE
		DITCH LINE
1015	1015	CONTOUR
X 1019.00 EX.	X 1019.00	TOP OF CURB
X 1018.50 EX.	X 1018.50	TOP OF PAVEMENT
X 1019.00 EX.	X 1019.00	FINISHED GRADE SPOT ELEVATION
	1.00%	GRADE SLOPE
	HP	MAJOR FLOOD ROUTING
	HP	HIGH POINT

RELEASE FOR
CONSTRUCTION
AS NOTED ON PLANS REVIEW
DEVELOPMENT SERVICES
LEE'S SUMMIT, MISSOURI
09/29/2021

0 10 20 30 40
SCALE: 1"=20'



MISSOURI
ONE CALL SYSTEM

The Missouri One Call System is a communications system which was established to help prevent damage to underground facilities and to promote safety. Missouri One Call operators are on duty 24 hours a day, seven days a week. Missouri One Call provides a telephone number for contractors and the general public to call for notification of their intent to use equipment for excavation, grading, blasting, boring, demolition or other types of similar work.

1-800-DIG-RITE or 811

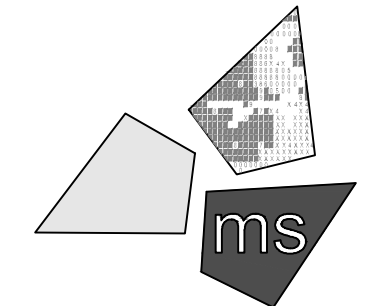
MAKE THE CALL...IT'S THE LAW

REVISION/DATE/DESCRIPTION

60% Plan Set	10/20/20
90% Plan Set	11/17/20
100% Plan Set/Bid Set	12/16/20
Issue for Construction	04/26/21
Bulletin 2	06/04/21
Bulletin 3	06/25/21
Bulletin 4	07/08/21
Bulletin 6	08/26/21
Bulletin 7	09/28/21

NOTICE

THIS ARCHITECTURAL AND ENGINEERING DRAWING IS GIVEN IN CONFIDENCE AND SHALL BE USED ONLY PURSUANT TO THE AGREEMENT WITH THE ARCHITECT. NO OTHER USE, DISSEMINATION, OR DUPLICATION MAY BE MADE WITHOUT PRIOR WRITTEN CONSENT OF THE ARCHITECT. ALL COMMON LAW RIGHTS OF COPYRIGHT AND OTHERWISE ARE HEREBY SPECIFICALLY RESERVED.



ms consultants, inc.
engineers, architects, planners
2221 Schrock Road
Columbus, Ohio 43229-1547
phone 614.898.7100
fax 614.898.7570

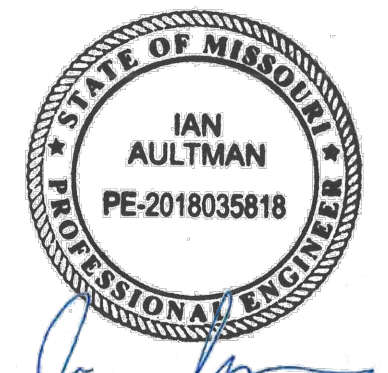
PROJECT

WHATABURGER
PT20M BUILDING

1460 NE DOUGLAS ST.
LEE'S SUMMIT, MO
64086

SHEET TITLE

SITE
GRADING
PLAN



DRAWN BY: LLK/AMA

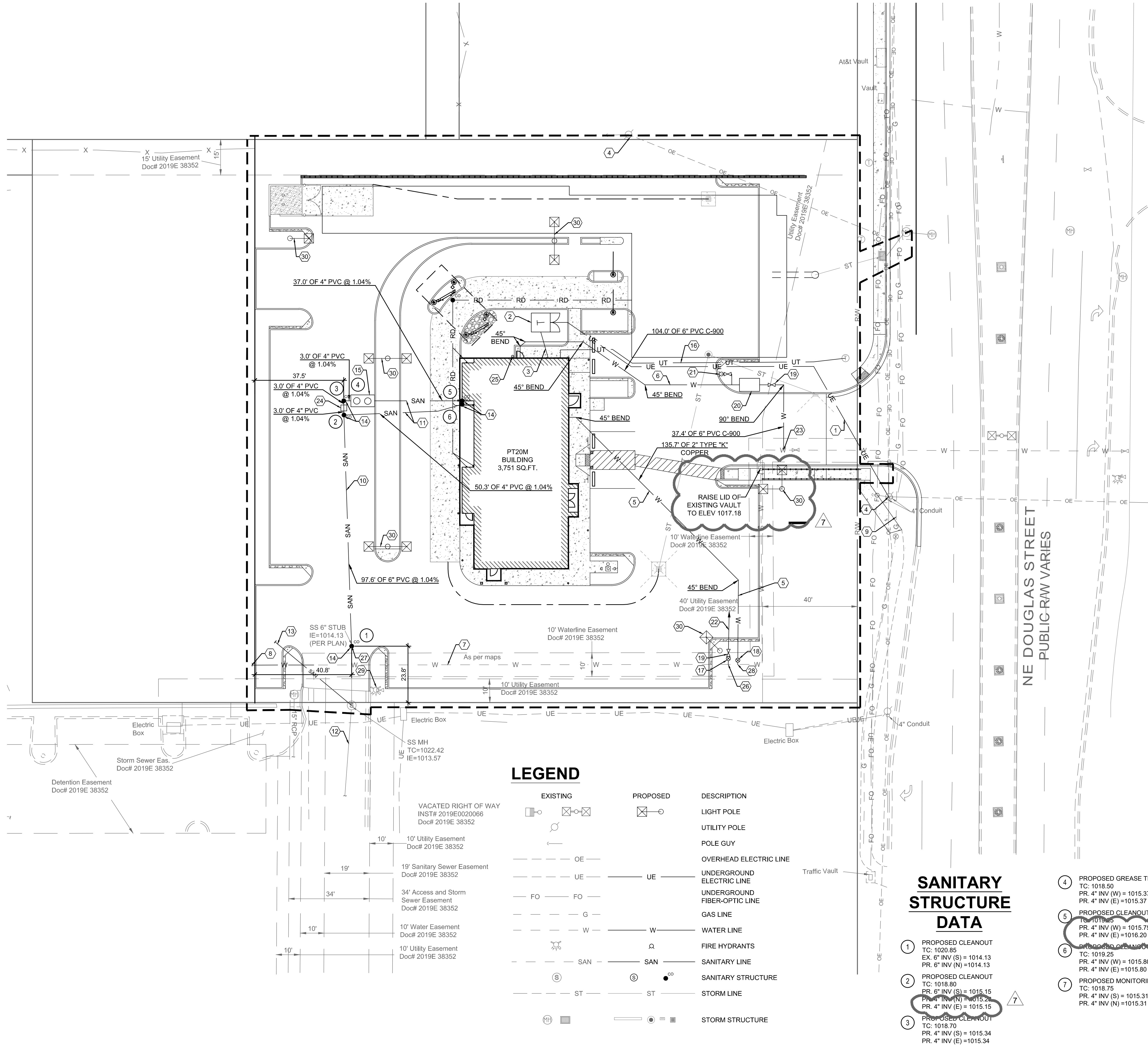
CHECKED BY: KEA

PROJECT NO: 40497-01

DRAWING

C-6

N:\031624049701-Lees Summit, MO\Docs\CAD\Civil\7 - Site Utility Plan.dwg, 9/28/2021 3:51 PM, drozin, kevin



GENERAL NOTES:

- ALL EXISTING CONDITIONS, TOPOGRAPHY, UTILITIES AND PROPERTY INFORMATION ARE TAKEN FROM A SURVEY OF LAND SITUATED IN THE CITY OF LEE'S SUMMIT, COUNTY OF JACKSON, AND STATE OF MISSOURI, BY SURVEYOR: YOUNG - HOBBS AND ASSOCIATES, 1202 CROSSLAND AVE., CLARKSVILLE, TN 37040, PHONE: (931) 645-2524
- ALL EXISTING UTILITIES, ARE TAKEN FROM SURVEY AND DO NOT NECESSARILY REPRESENT ALL UNDERGROUND UTILITIES ADJACENT TO OR UPON PREMISES SHOWN ON PLAN.
- CONTRACTOR RESPONSIBLE FOR MAINTAINING A MIN. COVER OF 42" OVER PROPOSED WATER SERVICE.
- CONTRACTOR IS RESPONSIBLE FOR LOCATING AND VERIFYING ALL EXISTING UNDERGROUND UTILITIES PRIOR TO CONSTRUCTION, AND IS RESPONSIBLE FOR ANY DAMAGE TO THEM DURING CONSTRUCTION.
- CLEANOUT LOCATIONS ARE NUMBERED ON PLAN. ALL CLEANOUTS IN PAVEMENT AREAS ARE TO BE H-20 RATED. CLEANOUTS SHALL BE INSTALLED PER DETAIL ON SHEET C-10.
- CONTRACTOR IS RESPONSIBLE FOR LOCATING THE EXISTING UTILITY LINES. PROPOSED UTILITIES SHOULD TIE INTO EXISTING UTILITIES AT A POINT INDICATED ON PLANS.
- SEE PLUMBING PLANS FOR CONTINUATION OF UTILITY LINES INTO BUILDING.
- CONTRACTOR SHALL INSTALL AND BACKFILL ALL TRENCHES AND STRUCTURES PER DETAIL ON SHEET C-10.
- STORM SEWER SHOWN HERE FOR REFERENCE ONLY. SEE GRADING PLAN FOR DESIGN DATA.
- THERE SHALL BE A MINIMUM 18" SEPARATION BETWEEN WATER TAPS, WATER SERVICES, PRIVATE WATER SYSTEMS, AND SANITARY AND/OR STORM SEWER SYSTEMS.
- THE EXCAVATING CONTRACTOR MUST TAKE PARTICULAR CARE WHEN EXCAVATING IN AND AROUND EXISTING UTILITY LINES AND EQUIPMENT. VERIFY COVER REQUIREMENTS BY UTILITY CONTRACTORS AND/OR UTILITY COMPANIES SO AS TO NOT CAUSE DAMAGE.
- CAUTION: OVERHEAD LINES ARE PRESENT ON SITE. CONTRACTOR TO TAKE SPECIAL CARE TO PREVENT DAMAGE TO THE LINES AND COORDINATE WITH UTILITY OWNER.

KEYED NOTES:

- PROPOSED PRIMARY ELECTRICAL SERVICE. CONTRACTOR TO COORDINATE CONDUIT SIZE, NUMBER OF CONDUITS, CONNECTIONS, AND BEND RADI WITH UTILITY OWNER AND MEP PLANS. CONTRACTOR TO COORDINATE CONNECTION WITH UTILITY OWNER.
- PROPOSED ELECTRIC TRANSFORMER. COORDINATE LOCATION WITH UTILITY OWNER AND ELECTRICAL PLANS.
- PROPOSED SECONDARY ELECTRICAL SERVICE. CONTRACTOR TO COORDINATE CONDUIT SIZE, NUMBER OF CONDUITS, CONNECTIONS, AND BEND RADI WITH UTILITY OWNER AND MEP PLANS. CONTRACTOR TO COORDINATE CONNECTION WITH UTILITY OWNER.
- EXISTING POWER POLE TO REMAIN. CONTRACTOR TO TAKE CARE NOT TO DISTURB EXISTING POLE AND GUY WIRES.
- PROPOSED SOFT TYPE "K" COPPER 2.0" DOMESTIC WATER SERVICE. INCLUDE IN BASE BID ALL VALVES, PIPING, STRUCTURES, ETC. THAT WILL BE REQUIRED. SEE MEP PLANS FOR CONTINUATION INTO BUILDING.
- PROPOSED PVC C900 6" FIRE SERVICE. INCLUDE IN BASE BID ALL VALVES, PIPING, STRUCTURES, ETC. THAT WILL BE REQUIRED. SEE MEP PLANS FOR CONTINUATION INTO BUILDING.
- EXISTING PRIVATE WATER MAIN.
- PROPOSED PRIVATE WATER MAIN EXTENSION BY DEVELOPER.
- EXISTING GAS MAIN. CONTRACTOR TO TAKE CARE EXCAVATING NEAR MAIN AND CONTACT ENGINEER IF ELEVATION OF GAS LINE INTERFERES WITH UTILITY CONNECTIONS.
- PROPOSED 6" SANITARY SEWER. ASTM D3034, SDR-26. SEWER TO HAVE MINIMUM SLOPE OF 1.04%. CONTRACTOR TO MAINTAIN A MINIMUM OF 36" OF COVER OVER SEWER LINES.
- PROPOSED 4" SANITARY SEWER. ASTM D3034, SDR-26. SEWER TO HAVE MINIMUM SLOPE OF 1.04%. CONTRACTOR TO MAINTAIN A MINIMUM OF 36" OF COVER OVER SEWER LINES.
- EXISTING SANITARY SEWER MAIN.
- PROPOSED SANITARY SEWER MAIN EXTENSION BY DEVELOPER.
- PROPOSED SANITARY CLEANOUT (TYP.). SEE DETAIL ON SHEET C-10.
- GREASE TRAP REQUIRED. SEE PLUMBING SHEETS FOR DETAILS.
- 2" PVC CONDUIT FOR UNDERGROUND TELEPHONE SERVICE. CONTRACTOR TO COORDINATE WITH UTILITY OWNER.
- PROPOSED IRRIGATION 1" WATER METER PER CITY OF LEE'S SUMMIT STANDARD DRAWING WAT-11, SEE SHEET C-11.
- PROPOSED DOMESTIC 1.5" WATER METER PER CITY OF LEE'S SUMMIT STANDARD DRAWING WAT-11, SEE SHEET C-11.
- PROPOSED GATE VALVE PER CITY OF LEE'S SUMMIT STANDARD DRAWING WAT-9, SEE SHEET C-11.
- PROPOSED BACKFLOW PREVENTER VAULT PER CITY OF LEE'S SUMMIT STANDARD DRAWING WAT-12, SEE SHEET C-11.
- PROPOSED FIRE HYDRANT RELOCATION. HYDRANT TO BE INSTALLED PER CITY OF LEE'S SUMMIT STANDARD DRAWING WAT-8, SEE SHEET C-11.
- PROPOSED 1" IRRIGATION LINE, SEE IRRIGATION PLAN FOR MORE INFORMATION.
- FIRE SERVICE TAP CONNECTION PER CITY OF LEE'S SUMMIT STANDARD ITEM 6901.
- MONITORING WELL. SEE PLUMBING PLANS FOR DETAILS.
- FIRE DEPARTMENT CONNECTION PER LOCAL REGULATIONS.
- DOMESTIC WATER TAP WITH SADDLE, COPORATION STOP, AND 1" METER PER CITY OF LEE'S SUMMIT STANDARD DRAWING WAT-11, SEE SHEET C-11.
- PROPOSED SANITARY CONNECTION PER CITY OF LEE'S SUMMIT STANDARD SPECIFICATION 3502.
- PROPOSED WATER CONNECTION PER CITY OF LEE'S SUMMIT STANDARD SPECIFICATION SECTION 6900.
- EXISTING FIRE HYDRANT TO REMAIN.
- SITE LIGHT, SEE PHOTOMETRIC LIGHTING PLAN.

RELEASE FOR
CONSTRUCTION
AS NOTED ON PLANS REVIEW
DEVELOPMENT SERVICES
LEE'S SUMMIT, MISSOURI
09/29/2021

SANITARY STRUCTURE DATA

- PROPOSED CLEANOUT
TC: 1020.85
EX. 6" INV (S) = 1014.13
PR. 6" INV (N) = 1014.13
- PROPOSED CLEANOUT
TC: 1018.80
PR. 6" INV (S) = 1015.15
PR. 4" INV (N) = 1013.22
PR. 4" INV (E) = 1015.15
- PROPOSED CLEANOUT
TC: 1018.70
PR. 4" INV (S) = 1015.34
PR. 4" INV (E) = 1015.34

- PROPOSED GREASE TRAP
TC: 1018.50
PR. 4" INV (W) = 1015.37
PR. 4" INV (E) = 1015.37
- PROPOSED CLEANOUT
TC: 1019.25
PR. 4" INV (W) = 1015.75
PR. 4" INV (E) = 1016.20
- PROPOSED CLEANOUT
TC: 1019.25
PR. 4" INV (W) = 1015.80
PR. 4" INV (E) = 1015.80
- PROPOSED MONITORING WELL
TC: 1018.75
PR. 4" INV (S) = 1015.31
PR. 4" INV (N) = 1015.31

0 10 20 30 40
SCALE: 1"=20'



The Missouri One Call System is a communications system which was established to help prevent damage to underground facilities and to promote safety. Missouri One Call operators are on duty 24 hours a day, seven days a week. Missouri One Call provides a telephone number for contractors and the general public to call for notification of their intent to use equipment for excavation, grading, blasting, boring, demolition or other types of similar work.

1-800-DIG-RITE or 811

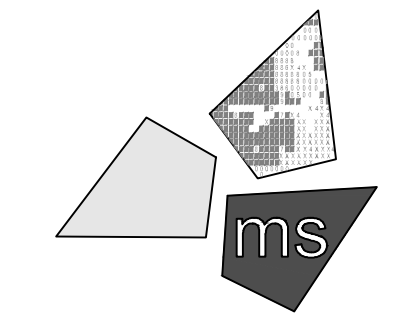
MAKE THE CALL...IT'S THE LAW

REVISION/DATE/DESCRIPTION

60% Plan Set	10/20/20
90% Plan Set	11/17/20
100% Plan Set/Bid Set	12/16/20
Issue for Construction	04/26/21
Bulletin 2	06/04/21
Bulletin 3	06/25/21
Bulletin 4	07/08/21
Bulletin 6	08/26/21
Bulletin 7	09/28/21

NOTICE

THIS ARCHITECTURAL AND ENGINEERING DRAWING IS GIVEN IN CONFIDENCE AND SHALL BE USED ONLY PURSUANT TO THE AGREEMENT WITH THE ARCHITECT. NO OTHER USE, DISSEMINATION, OR DUPLICATION MAY BE MADE WITHOUT PRIOR WRITTEN CONSENT OF THE ARCHITECT. ALL COMMON LAW RIGHTS OF COPYRIGHT AND OTHERWISE ARE HEREBY SPECIFICALLY RESERVED.



ms consultants, inc.
engineers, architects, planners
2221 Schrock Road
Columbus, Ohio 43229-1547
phone 614.898.7100
fax 614.898.7570

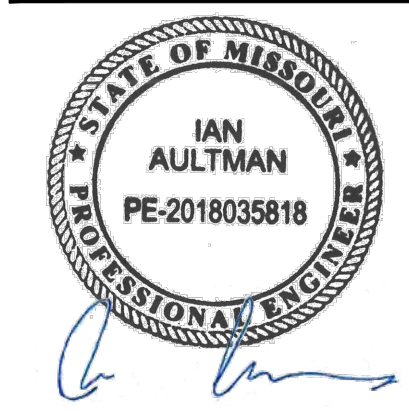
PROJECT

WHATABURGER
PT20M BUILDING

1460 NE DOUGLAS ST.
LEE'S SUMMIT, MO
64086

SHEET TITLE

SITE UTILITY
PLAN



DRAWN BY: LLK/AMA

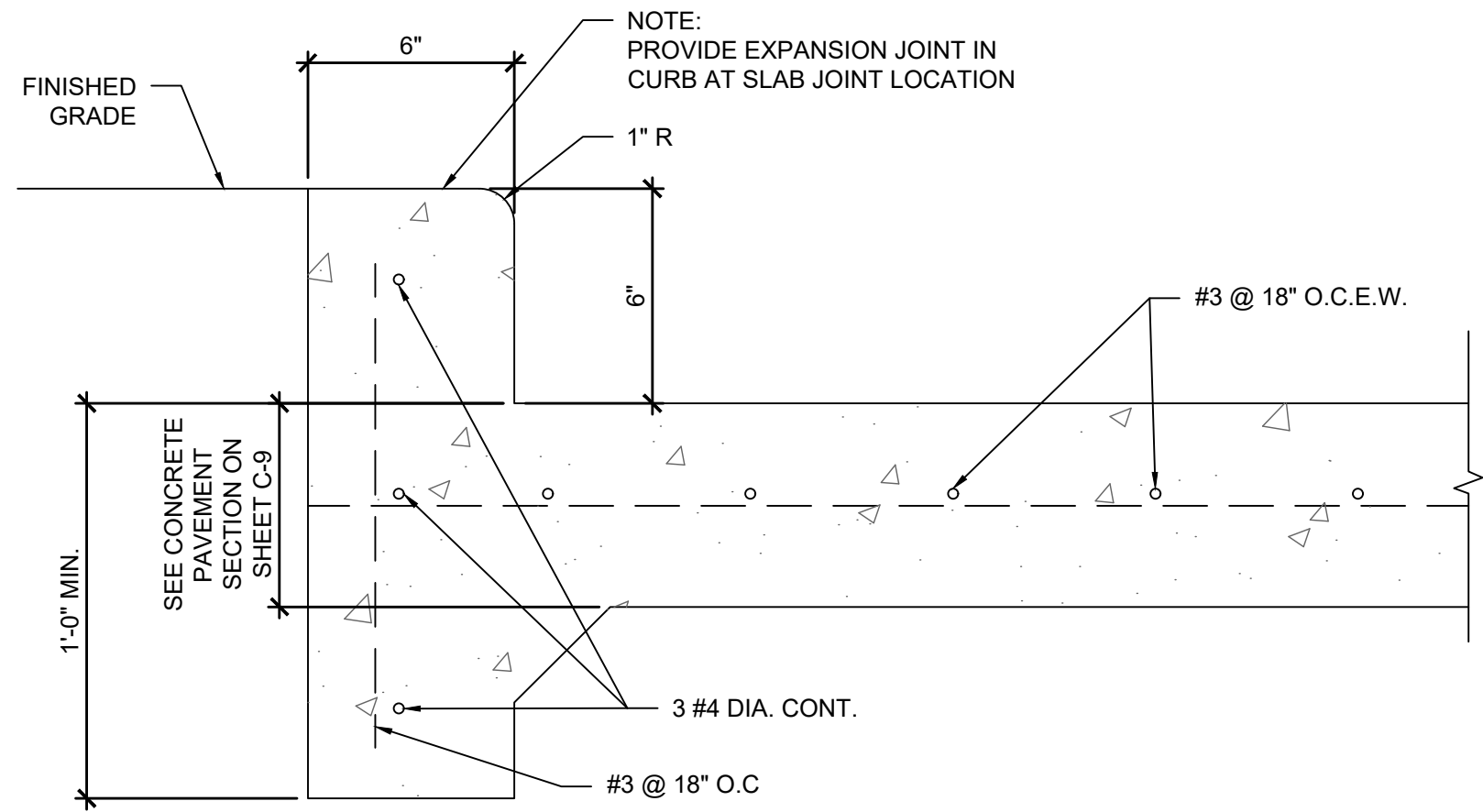
CHECKED BY: KEA

PROJECT NO: 40497-01

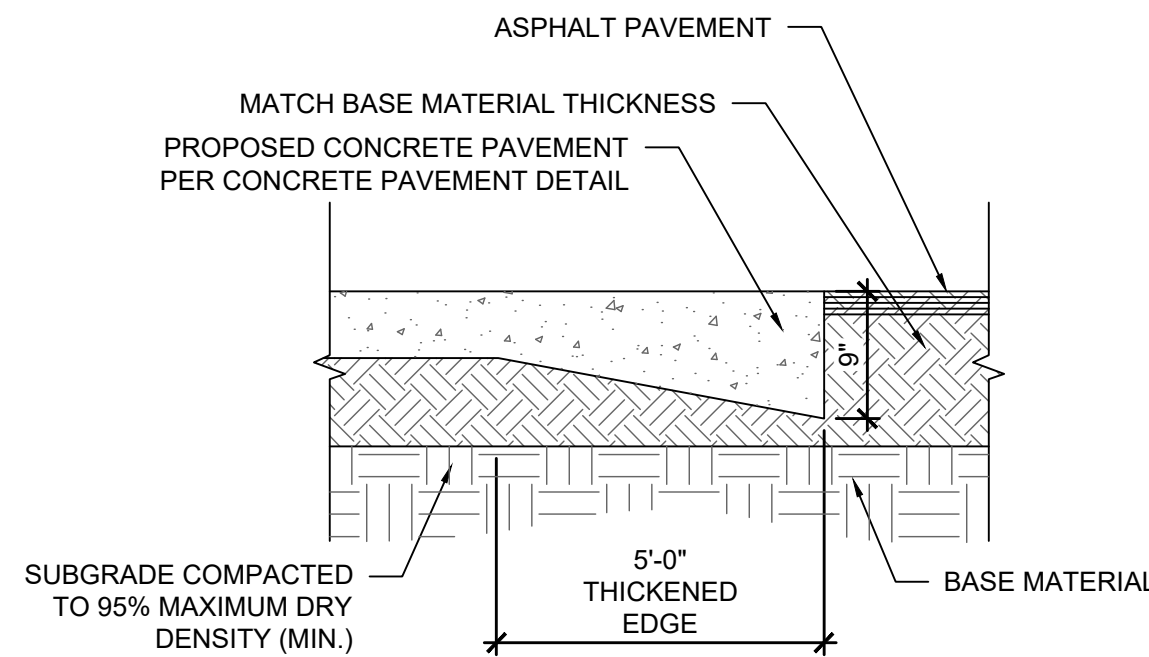
DRAWING

C-7

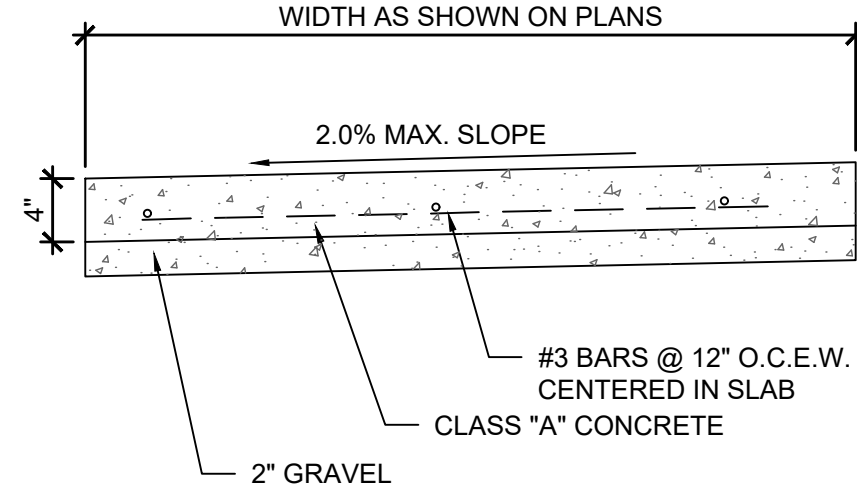
N:\03624049701-Lees Summit, MO\Docs\CAD\Civil\C11 - Site Details.dwg, 9/28/2021 4:28 PM, drozin, kevin



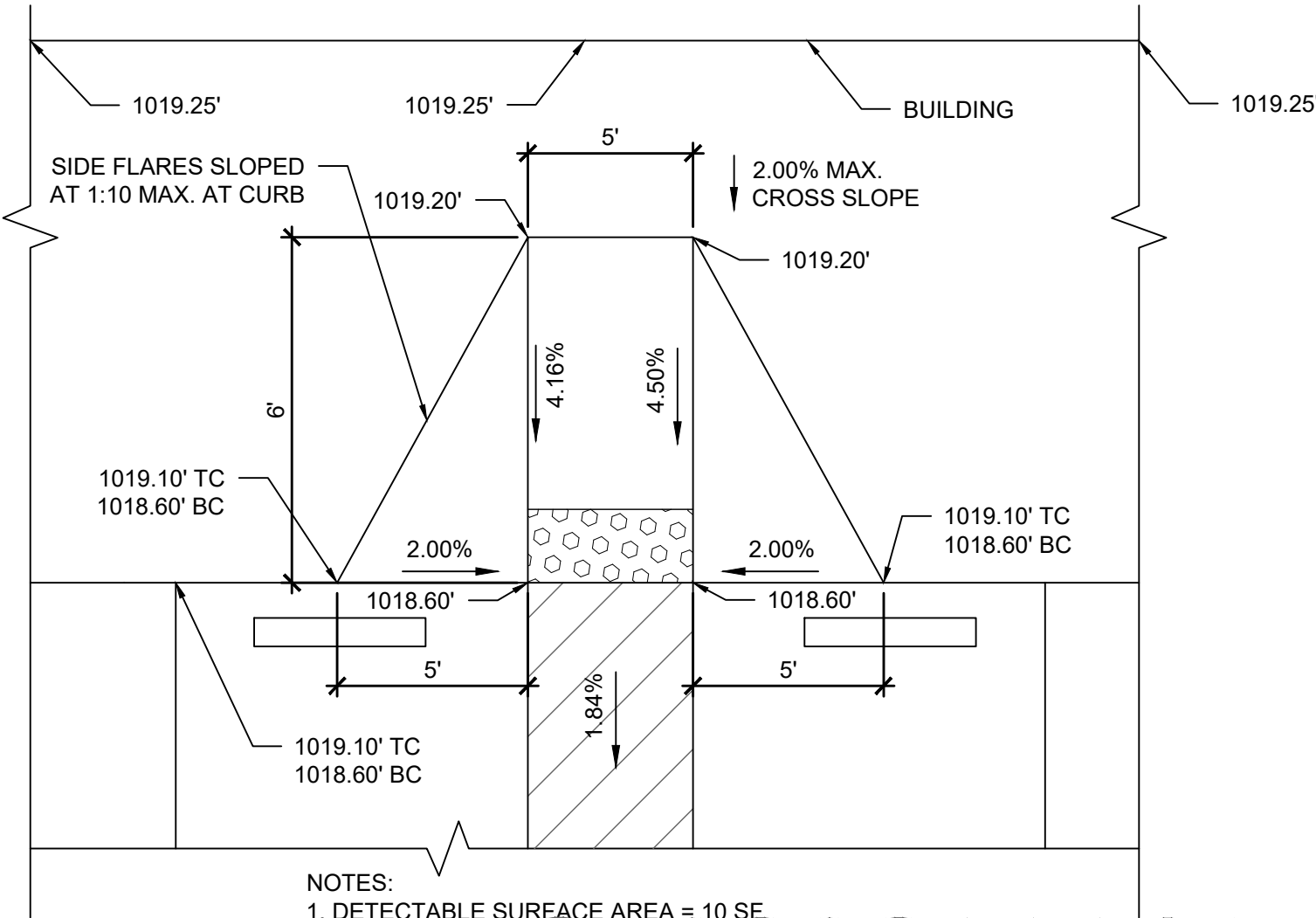
A MONOLITHIC CURB DETAIL
C11 N.T.S.



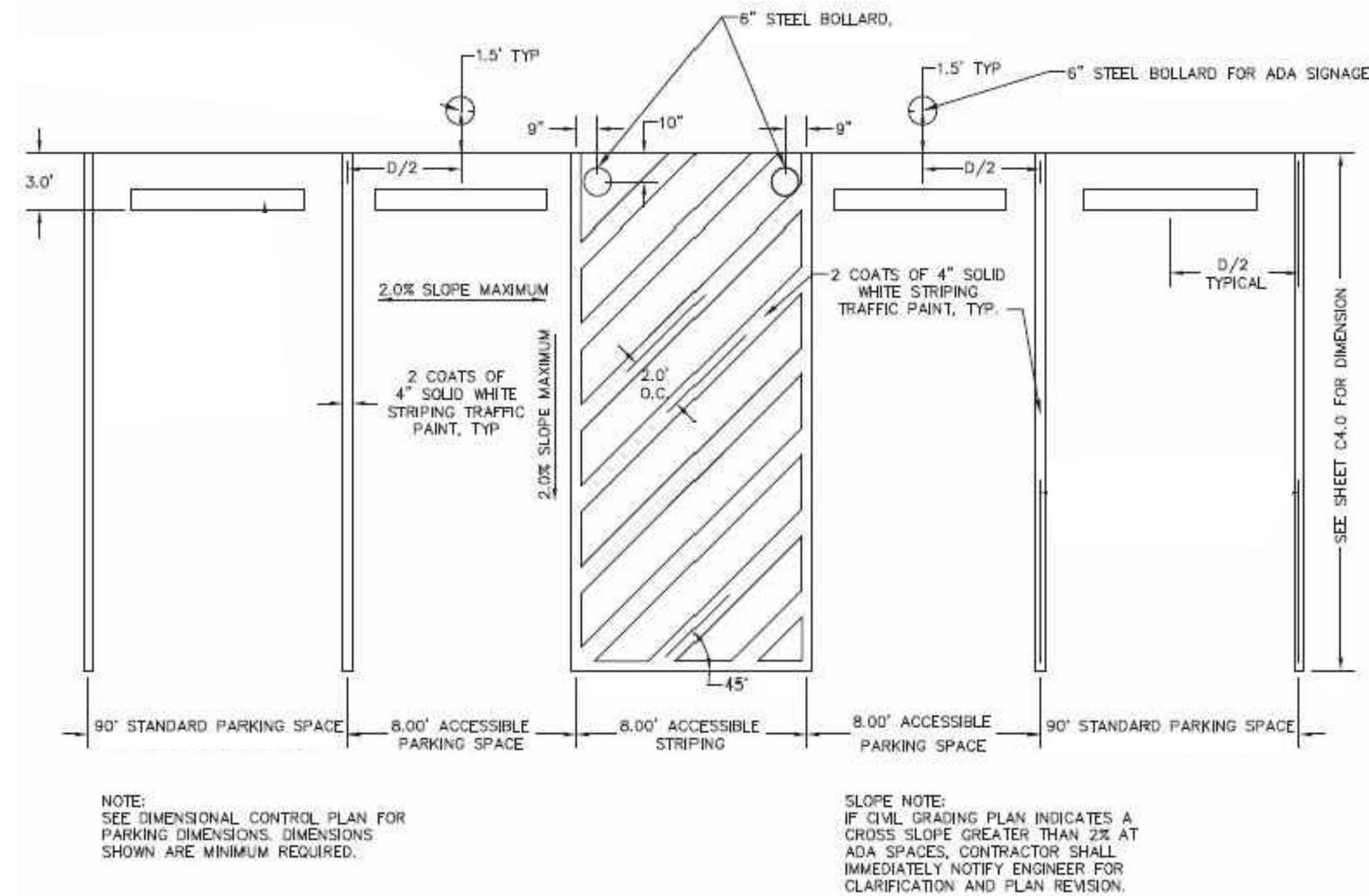
B PAVEMENT TRANSITION
C11 N.T.S.



C CONCRETE CURB NOSE DETAIL
C11 N.T.S.

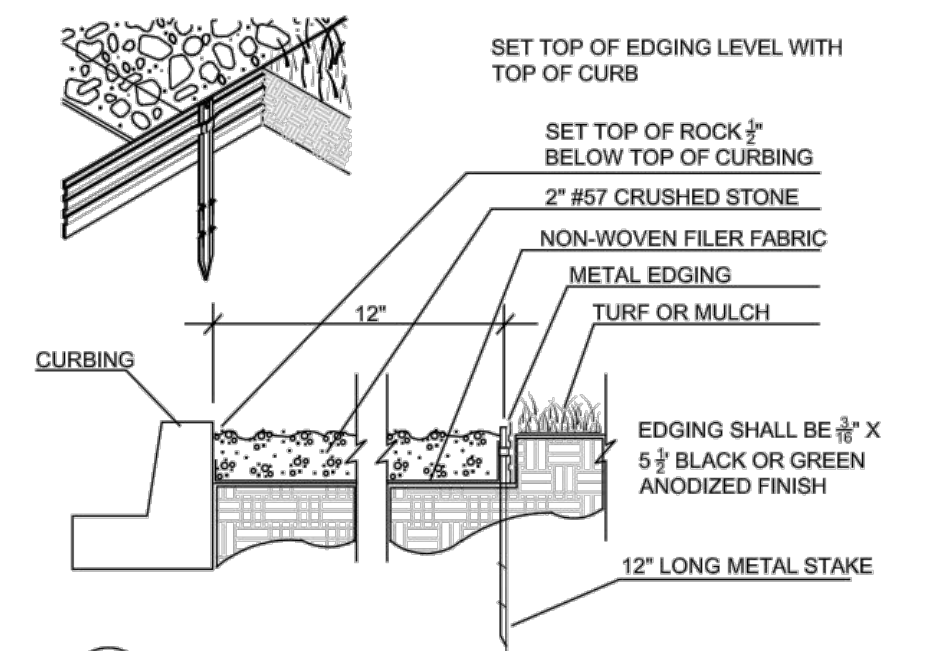


D CURB RAMPS
C11 N.T.S.

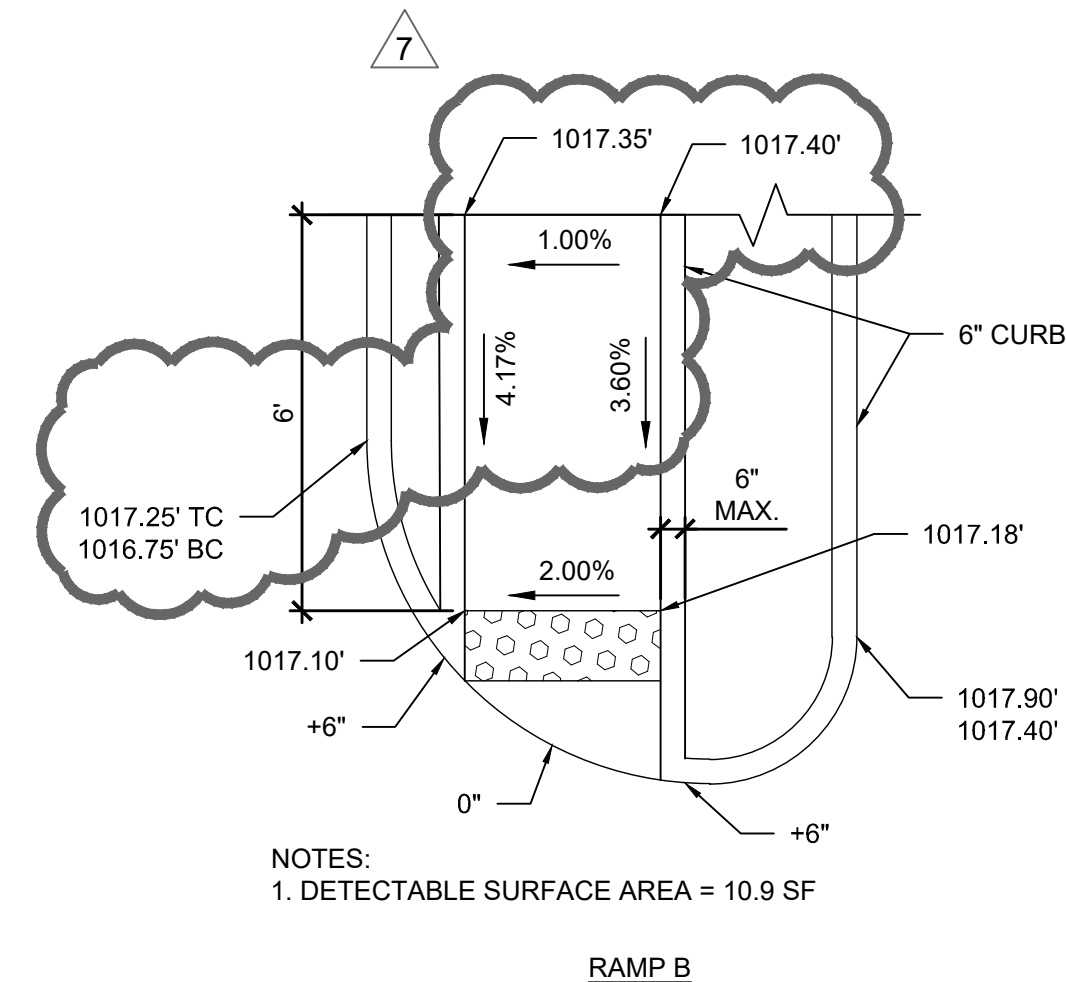


E PARKING STRIPING
C11 N.T.S.

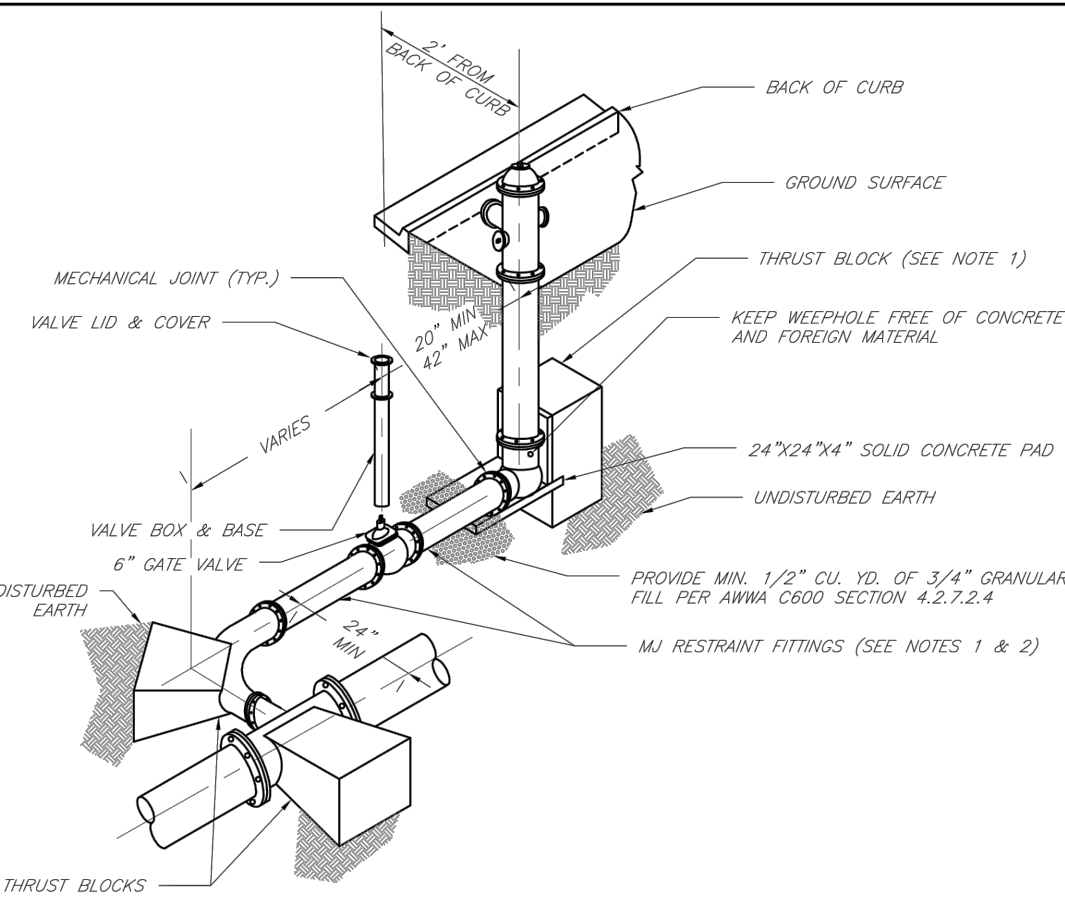
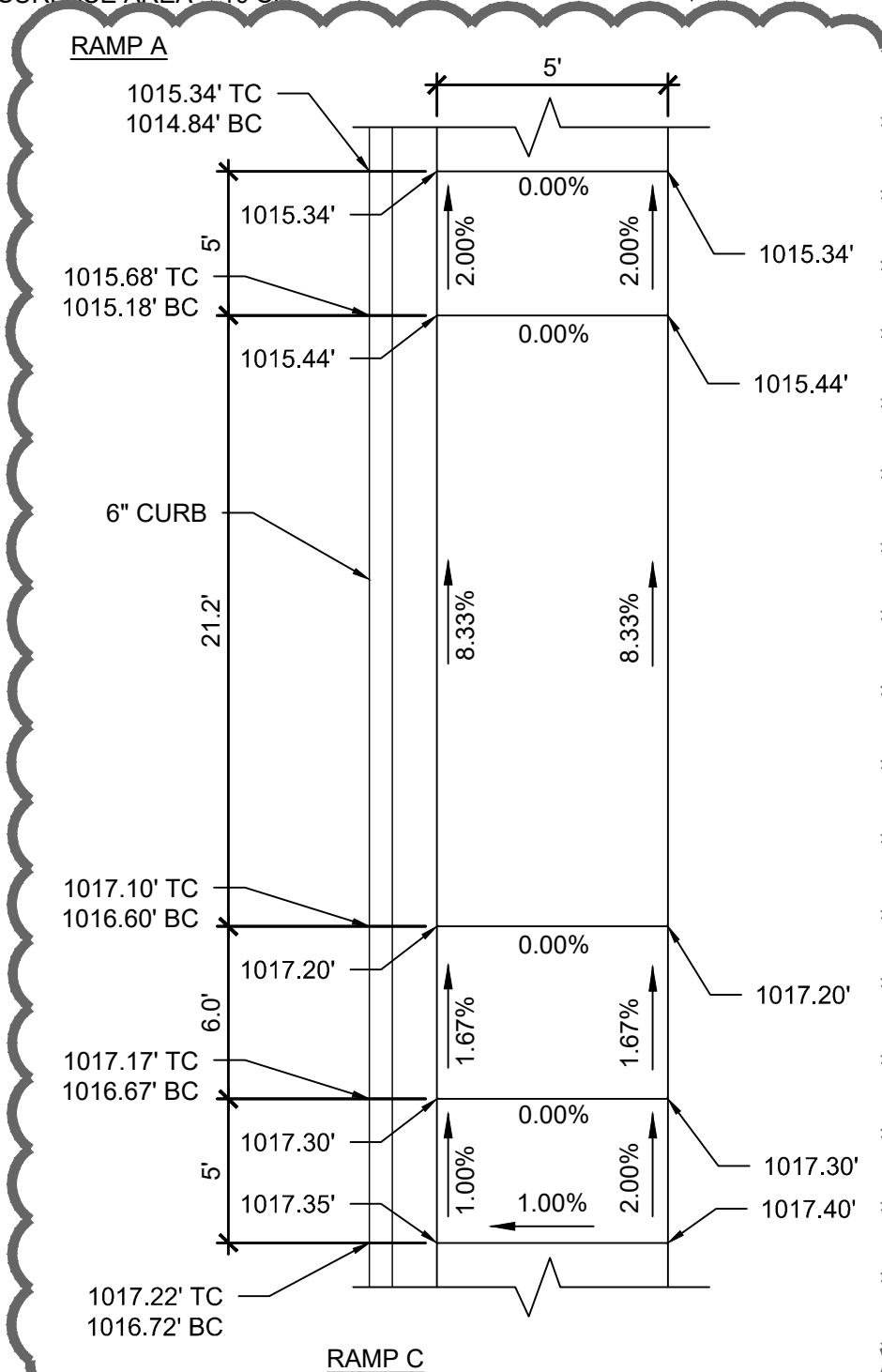
METAL EDGING SHALL BE AS MANUFACTURED BY COL-MET OR EQUAL.
CRUSHED STONE SHALL BE INSTALLED ON TOP OF NONWOVEN FILTER FABRIC.
INSTALL METAL EDGING BETWEEN CRUSHED STONE AND SOD/MULCH. LAVA ROCK IS UNACCEPTABLE. SUBMIT SAMPLE TO OWNER FOR APPROVAL.



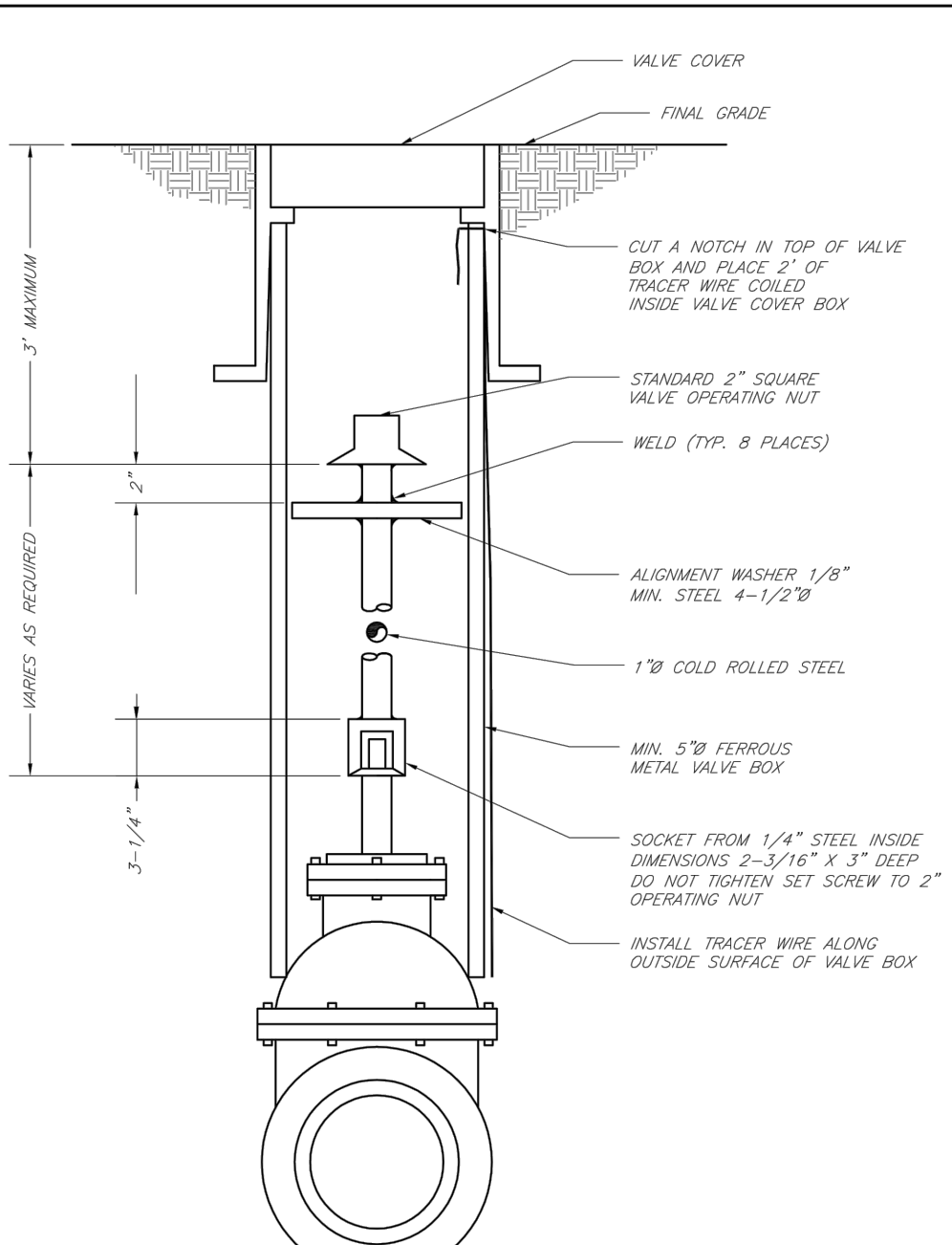
F GRANITE DETAIL
C11 N.T.S.



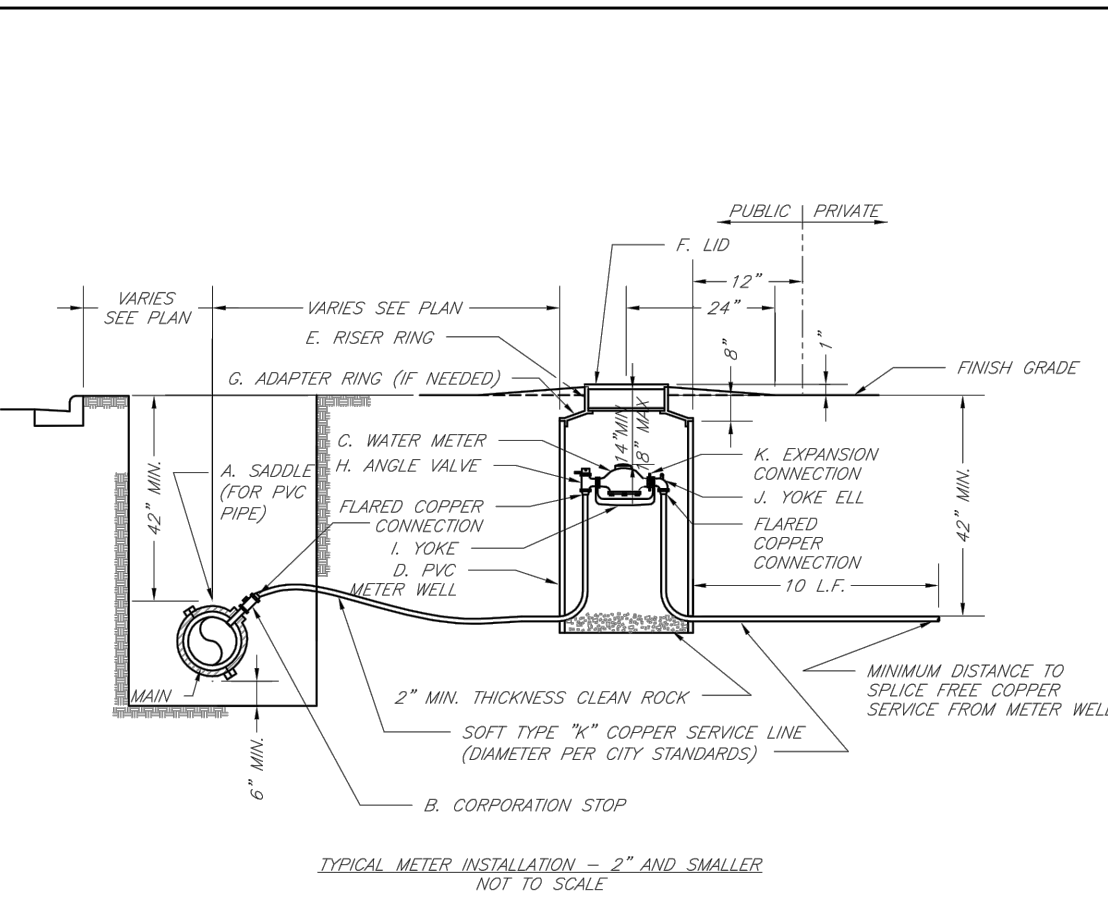
D CURB RAMPS
C11 N.T.S.



- NOTES:
- WHEN RETAINER GLANDS ARE USED IN LIEU OF MECHANICAL JOINT (M) RESTRAINT FITTINGS, HORIZONTAL THRUST BLOCKS ARE REQUIRED.
 - GATE VALVE MAY BE ISOLATED DIRECTLY TO M RESTRAINT TEE.
 - SEE APPROVED PRODUCTS LIST FOR WATER UTILITIES FOR FIRE HYDRANT, VALVES, VALVE BOX LID, AND COVER.
 - BOTTOM HYDRANT FLANGE SHALL BE 2" TO 6" ABOVE FINISHED GRADE.
 - FOR STREETS WITHOUT CURBS FIRE HYDRANTS SHALL BE PLACED WITHIN 1 FOOT OF THE R/W LINE, BUT NOT MORE THAN 10' FROM EDGE OF PAVEMENT. FIRE HYDRANT SHALL NOT BE PLACED IN BOTTOM OF DITCH.
 - HYDRANT SHALL BE ROTATED AS DIRECTED BY INSPECTOR.

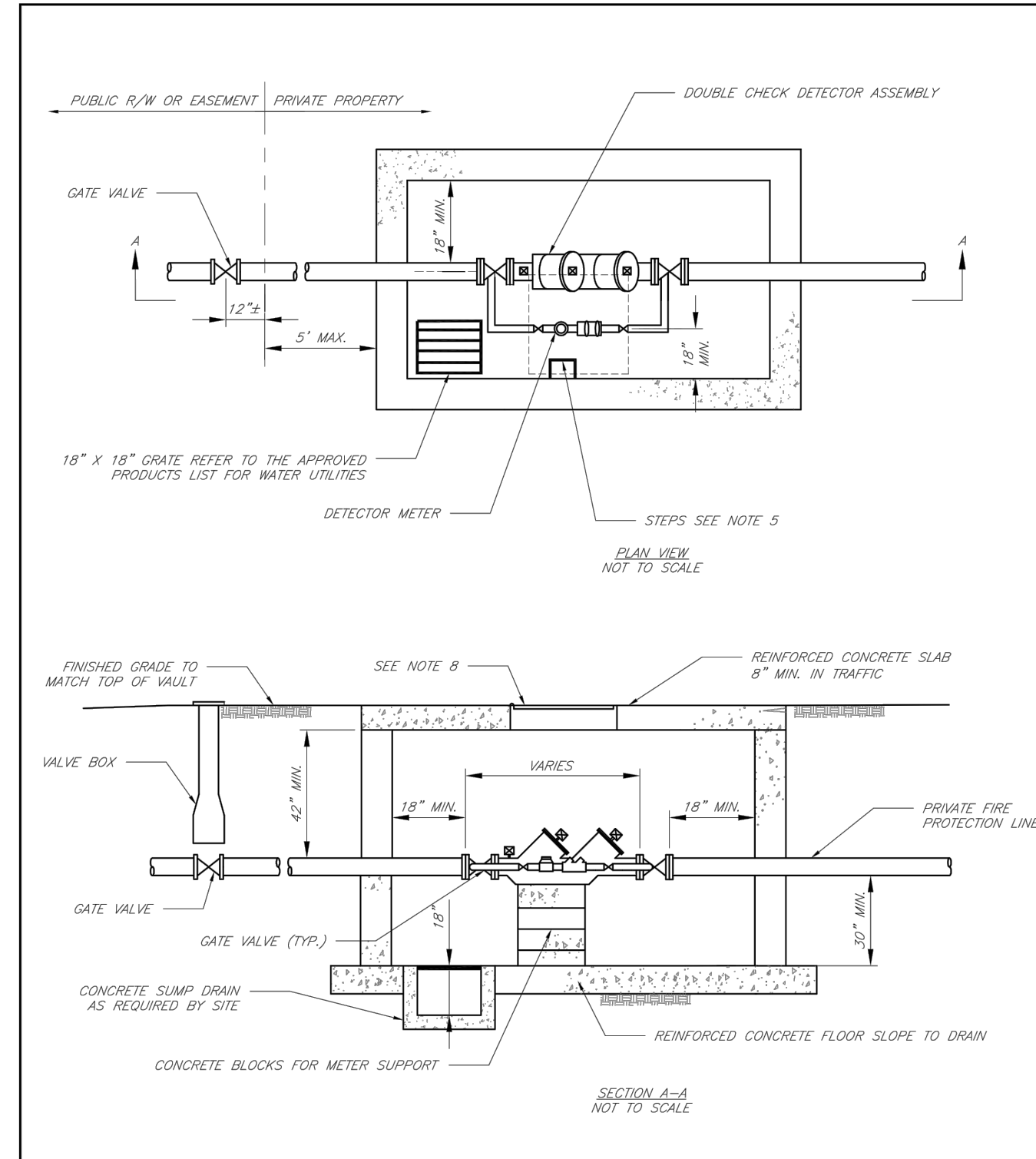


LEE'S SUMMIT MISSOURI
VALVE STEM EXTENSION AND VALVE BOX



- NOTES:
- METER INSTALLATION SHALL NOT BE LOCATED IN AREAS SUBJECT TO VEHICULAR TRAFFIC OR IN CONCRETE PAVEMENT WITHOUT CITY APPROVAL.
 - IF METER IS TO BE LOCATED OTHER THAN IN FRONT OF PROPERTY LINE, CITY APPROVAL SHALL BE OBTAINED.
 - CITY TO FURNISH ITEMS A-K.
 - NO OTHER EQUIPMENT SHALL BE INSTALLED IN THIS PIT.
 - 42" MINIMUM BURY DEPTH FOR ALL SERVICE LINES.
 - EXCAVATION FOR TAP TO EXPOSE 4 LINEAR FEET OF MAIN.
 - NO SPLICES ALLOWED BETWEEN METER AND MAIN.
 - SERVICE CONNECTION TAP AT APPROXIMATELY 45 DEGREES.
 - LID AND RISER RING SHALL BE SET SO THAT GROUND WATER WILL DRAIN AWAY FROM THE WELL.
 - CONTACT WATER UTILITIES, 816-969-1900, FOR REQUIREMENTS OF A METER LARGER THAN 2"

LEE'S SUMMIT MISSOURI
SERVICE CONNECTION/METER WELL



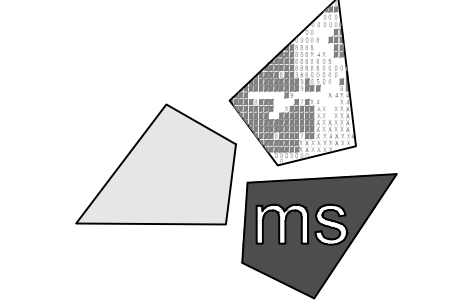
- GENERAL NOTES:
- METER VAULT WALLS TO BE POURED OR PRECAST CONCRETE. METER VAULT ROOF TO BE REINFORCED CONCRETE WITH REINFORCING COVERED OVER DETECTOR METER. REINFORCED WALLS AND SLABS ARE TO BE DESIGNED BY THE OWNER'S ENGINEER OR PRECAST ENGINEER.
 - METER VAULT TO BE LOCATED, WHEN POSSIBLE, OUTSIDE TRAFFIC AREA AND WHERE SURFACE WATER WILL NOT DRAIN INTO IT. PROVIDE CONCRETE SUMP TO DRAIN TO AN ABOVE GROUND DISCHARGE POINT.
 - ALL FITTINGS AND FITTINGS FROM THE CITY WATER MAIN THROUGH THE VAULT SHALL BE PROVIDED WITH RESTRAINED JOINT FITTINGS.
 - ALL FITTINGS FOR THE DETECTOR METER TO BE BRASS.
 - STEPS SHALL BE IN ACCORDANCE WITH THE APPROVED PRODUCTS LIST FOR WATER UTILITIES AND SHALL BE ON 16" CENTERS.
 - A DEPARTMENT OF NATURAL RESOURCES APPROVED DOUBLE CHECK DETECTOR ASSEMBLY BACKFLOW PREVENTER MUST BE USED, FOR A COPY OF THE MISSOURI DEPARTMENT OF NATURAL RESOURCES APPROVED BACKFLOW PREVENTION ASSEMBLIES, CONTACT WATER UTILITIES AT 816-969-1900.
 - ALL VALVES SHALL HAVE RISING STEMS.
 - MANHOLE COVER SHALL BE A BUILT UP 1-1 MODEL UNLESS IN A VEHICLE TRAFFIC AREA. SEE THE APPROVED PRODUCTS LIST FOR WATER UTILITIES FOR TRAFFIC CONDITIONS. THE COVER SHALL HAVE A 1-3/4" HOLE DRILLED FOR A TOUCH/FEEL DEVICE.
 - A MINIMUM OF 18" CLEARANCE SHALL BE PROVIDED AROUND ALL PIPING, VALVES, APPURTENANCES, ETC.
 - CONTACT PUBLIC WORKS ENGINEERING FOR VAULTS THAT INCLUDE A FIRE DEPARTMENT CONNECTION OR A 3" OR LARGER METER.

RELEASE FOR CONSTRUCTION
AS NOTED ON PLANS REVIEW
DEVELOPMENT SERVICES
LEE'S SUMMIT, MISSOURI
09/29/2021

CITY OF LEE'S SUMMIT, MO
PUBLIC WORKS DEPARTMENT
ENGINEERING DIVISION
STANDARD DRAWINGS
VALVE FOR DOUBLE CHECK DETECTOR CHECK
Drawn By: AS
Checked By: AS
File: WAT-12
Rev: 1/14
Date: 02/13
Drawn By: AS
Checked By: AS
File: WAT-12
Rev: 1/14
Date: 02/13

REVISION/DATE/DESCRIPTION	
60% Plan Set	10/20/20
90% Plan Set	11/17/20
100% Plan Set/Bid Set	12/16/20
Issue for Construction	04/26/21
Bulletin 2	06/04/21
Bulletin 3	06/25/21
Bulletin 4	07/08/21
Bulletin 6	08/26/21
Bulletin 7	09/28/21

NOTICE
THIS ARCHITECTURAL AND ENGINEERING DRAWING IS GIVEN IN CONFIDENCE AND SHALL BE USED ONLY PURSUANT TO THE AGREEMENT WITH THE ARCHITECT. NO OTHER USE, DISSEMINATION, OR DUPLICATION MAY BE MADE WITHOUT PRIOR WRITTEN CONSENT OF THE ARCHITECT. ALL COMMON LAW RIGHTS OF COPYRIGHT AND OTHERWISE ARE HEREBY SPECIFICALLY RESERVED.

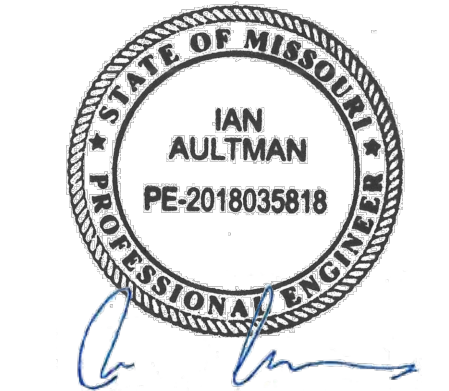


ms consultants, inc.
engineers, architects, planners
2221 Schrock Road
Columbus, Ohio 43229-1547
phone 614.898.7100
fax 614.898.7570

PROJECT
WHATABURGER
PT20M BUILDING

1460 NE DOUGLAS ST.
LEE'S SUMMIT, MO
64086

SHEET TITLE
SITE
DETAILS



DRAWN BY: LLK/JAM
CHECKED BY: KEA
PROJECT NO: 40497-01
DRAWING
C-11