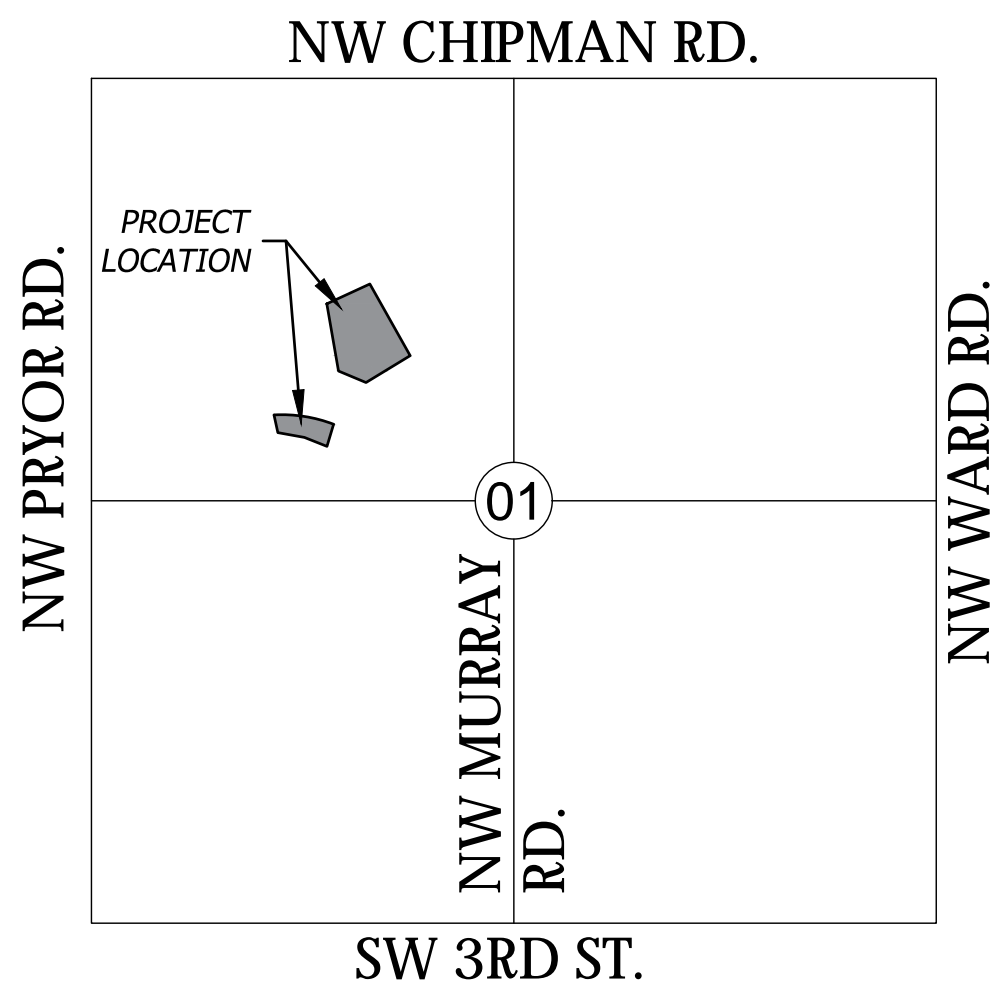


Sep 17, 2021 -- 9:22am Plotted By: Eric Byrd V:\028800-John Knox Village Ph. II\04-DWG\Eng\Sheet\PH\028800-SUTS-COVG.dwg Layout: Cover Sheet



VICINITY MAP
SEC 01— TWP 47N— RNG 32W
NOT TO SCALE

UTILITY CONTACTS CITY OF LEE'S SUMMIT, MO

PLANNING AND DEVELOPMENT
CITY HALL
JOSH JOHNSON
220 SE GREEN STREET
LEE'S SUMMIT, MO 64063
TEL: (816) 969-1600
FAX: (816) 969-1619

CODES ADMINISTRATION
CITY HALL
220 SE GREEN STREET
LEE'S SUMMIT, MO 64063
TEL: (816) 969-1200
FAX: (816) 969-1201

PUBLIC WORKS
CITY HALL
220 SE GREEN STREET
LEE'S SUMMIT, MO 64063
TEL: (816) 969-1800
FAX: (816) 969-1809

WATER UTILITIES
CITY HALL
1200 SE HAMBLIN RD
LEE'S SUMMIT, MO 64063
TEL: (816) 969-1900
FAX: (816) 969-1935

LEE'S SUMMIT FIRE DEPARTMENT
207 SE DOUGLAS ROAD
LEE'S SUMMIT, MO 64063
TEL: (816) 969-1300

ELECTRIC COMPANY
EVERGY
TEL: (888) 471-5275

TELEPHONE COMPANY
AT&T
TEL: (800) 464-7928

GAS COMPANY
MISSOURI GAS ENERGY
TEL: (816) 756-5252

All existing utility locations shown are approximate only and are not guaranteed to be accurate or all inclusive. Contractor shall be responsible for contacting all utility companies and verifying the actual field locations of all utilities prior to any construction activity. Contractor shall keep all utility locations current. Utilities damaged through the negligence of the contractor to obtain the proper field locations shall be the responsibility of the contractor to repair or replace at their expense and at the direction of the utility company. The contractor shall pothole and survey all utility crossings prior to construction of any portion of storm sewer, sanitary sewer laterals, underdrains, conduit and any other subsurface element of the project. The survey information shall be forwarded to the project engineer for review. The contractor shall not begin construction on any subsurface element on the project without the approval of the project engineer. Utility coordination, potholing/surveying shall be subsidiary to other bid items.

Dig Safely. 811
Missouri One-Call
1-800-344-7483

CITY OF LEE'S SUMMIT, MISSOURI

JOHN KNOX VILLAGE MEADOWS

PUBLIC WATER MAIN IMPROVEMENTS

CITY PROJECT NO. PL2021150



VICINITY MAP
Not to Scale

BENCHMARKS / CONTROL POINTS (DATUM: NAVD88)

BM/CP #5002
SET CUT "+" ± 6" OF CONCRETE SIDEWALK IN EAST CURB
RETURN, NORTH SIDE OF NORTHWEST O'BRIEN ROAD
NORTH = 1002910.185
EAST = 2814693.406
ELEVATION = 963.93

BM/CP #13314
SET CUT "+" IN CONCRETE SIDEWALK, SOUTHWEST
CORNER OF NORTHWEST MOORE STREET &
NORTHWEST HOPE LANE (NOT SHOWN HEREON)
NORTH = 1003090.460
EAST = 2815069.800
ELEVATION = 974.62

BM/CP #13315
SET CUT "+" IN CONCRETE SIDEWALK, NORTHEAST
CORNER OF NORTHWEST O'BRIEN ROAD &
NORTHWEST MOORE STREET (NOT SHOWN HEREON)
NORTH = 1002830.710
EAST = 2814916.010
ELEVATION = 974.65

Sheet List Table	
Sheet Number	Sheet Title
1	COVER SHEET
2	OVERALL WATER MAIN PLAN
3	WATER MAIN PLAN & PROFILE
4	EROSION CONTROL PLAN
5	WATER MAIN DETAILS
6	WATER MAIN DETAILS 2

PREPARED & SUBMITTED BY:

BHC RHODES
OVERLAND PARK, KANSAS

ERIC BYRD, P.E.

09/17/2021
DATE

APPROVED:

BY THE CITY OF LEE'S SUMMIT, MISSOURI.

CITY ENGINEER

DATE

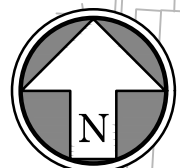
Rev.	Date	Description	By	App.



Prepared For:
JOHN KNOX VILLAGE
1001 NW CHIPMAN RD.
LEE'S SUMMIT, MO 64081
816-251-8000

PUBLIC WATER MAIN IMPROVEMENTS
JOHN KNOX VILLAGE MEADOWS
LEE'S SUMMIT, MO 64081
COVER SHEET

Design: SKT Drawn: SKT
Checked: ERB
Issue Date: 09/17/2021
Project Number: 028800



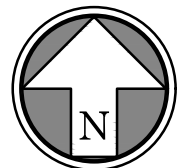
W - WATER SERVICE INFORMATION - CITY OF LEE'S SUMMIT

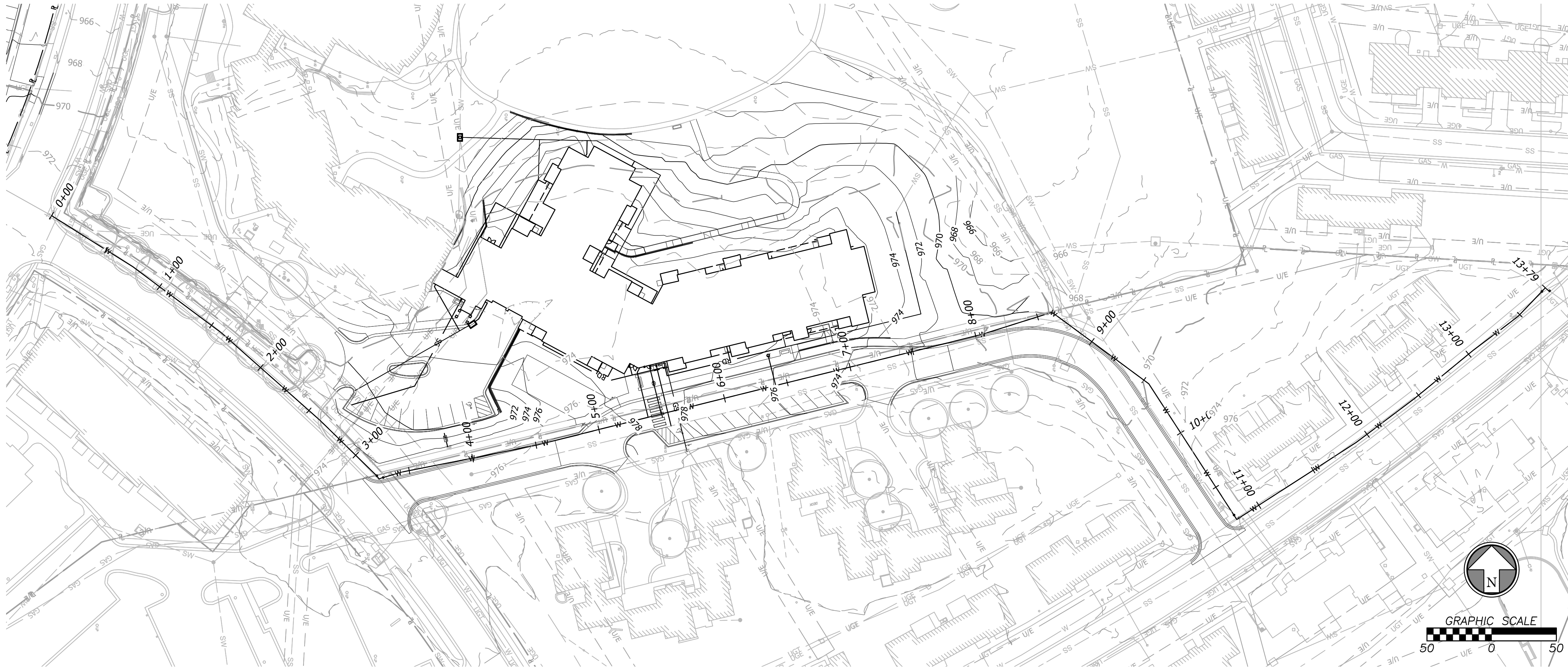
- 10 EXISTING VALVE TO REMAIN.
11 INSTALL 12" BUTTERFLY VALVE IF AVAILABLE EITHER THROUGH THE MARKET
OR THE CITY OF LEE'S SUMMIT WATER DEPARTMENT. IF NOT AVAILABLE,
12 INSTALL 12" GATE VALVE PER THE DIRECTION OF THE CITY OF LEE'S
SUMMIT.
13 INSTALL 8" GATE VALVE.
14 INSTALL 8"x6" REDUCER.
INSTALL 12"x6" TEE WITH THRUST BLOCKING. SEE JOINT RESTRAINT NOTE.
INSTALL 12"x8" REDUCER NORTH OF TEE. RESTRAIN ALL MECHANICAL
JOINTS AND ANY JOINTS BETWEEN THE TEE AND REDUCER.

1. CONTRACTOR SHALL REFER TO ALL SPECIFICATIONS, GUIDELINES, AND INSTALLATION DRAWINGS FROM THE CITY OF LEE'S SUMMIT, EVERY, AND SPIRE FOR THE INSTALLATION OF ALL SERVICE LINES.
2. CONTRACTOR TO ENSURE 18" MINIMUM SEPARATION BETWEEN WATER MAIN AND STORM/SANITARY LINES AT CROSSINGS PER LEE'S SUMMIT DESIGN STANDARDS. CONTRACTOR TO CALL CIVIL IF ANY CONFLICTS BETWEEN UTILITIES ARE FOUND.
3. CONTRACTOR TO RESTORE EXISTING CONDITIONS IF DEMOLISHED/DAMAGED DURING CONSTRUCTION TO MEET CITY OF LEE'S SUMMIT STANDARDS.
 - 3.1. REFER TO DETAILS ON SHEET 5 FOR RESTORATION DETAILS

1. ALL JOINTS BETWEEN STRADDLE BLOCKS AND REDUCERS SHALL BE RESTRAINED. ANY JOINT BETWEEN THE STRADDLE BLOCK AND THE CLOSEST MECHANICAL JOINT SHALL BE RESTRAINED IF THE STRADDLE BLOCK IS MOVED FARTHER FROM THE CONNECTION.

1. CONTRACTOR SHALL RECONNECT ALL EXISTING WATER SERVICE LINES THAT ARE DISCONNECTED DURING THE WATER MAIN DEMOLITION AND CONSTRUCTION. SEE DETAIL WAT-11 ON SHEET 4.

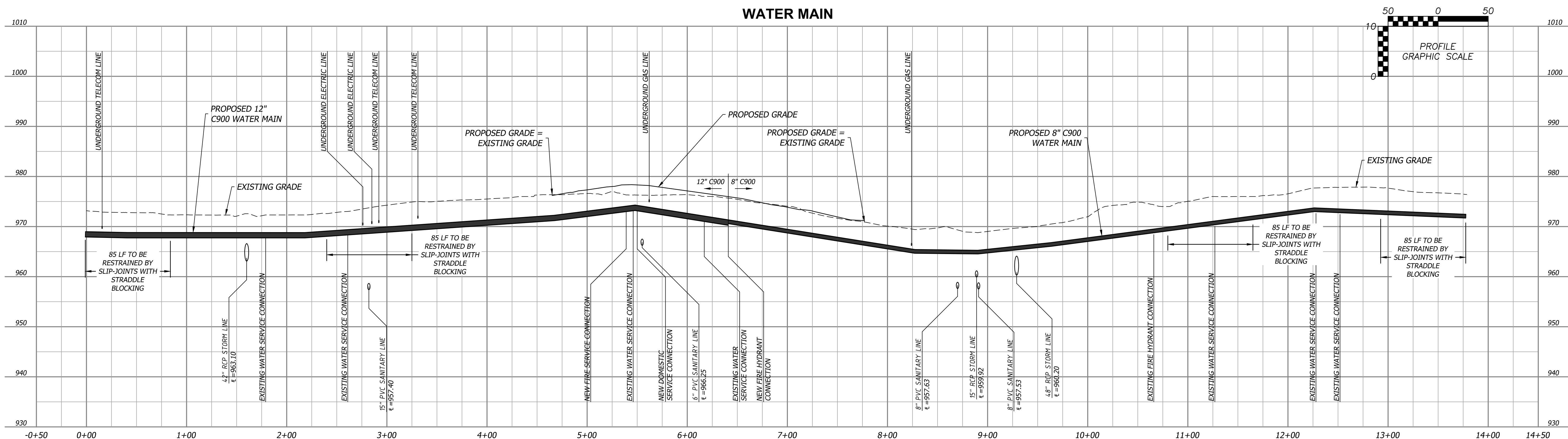
[illegible]



PHASING NOTES

- IN ORDER TO LIMIT THE AMOUNT OF TIME WATER USERS ARE WITHOUT WATER, THE CONSTRUCTION OF THIS WATER MAIN SHALL BE PHASED AS FOLLOWS:
 - INSTALL STRADDLE BLOCK ON EXISTING WATER MAIN AT STATION 1+60.
 - CUT AND CAP EXISTING WATER MAIN AT STATION 1+60.
 - REMOVE THE FIRST 150' OF EXISTING WATER MAIN DURING THE INSTALLATION OF NEW 12" MAIN. THE REMAINDER OF THE WATER MAIN SHALL BE ABANDONED IN PLACE.
 - START CONSTRUCTION OF NEW 12" WATER MAIN AT STATION 0+00, PER WATER MAIN CONNECTION DETAIL 4 ON SHEET 2.
 - INSTALL THE NEW 12" WATER MAIN FROM STATION 0+00 TO STATION 6+40. INSTALL THE NEW 8" WATER MAIN FROM STATION 6+40 TO STATION 13+75.
 - TEST AND FLUSH INSTALLED 8" AND 12" WATER MAIN.
 - CONNECT TO EXISTING WATER MAIN PER WATER MAIN CONNECTION DETAIL 1 ON SHEET 2.
 - USING VARIOUS VALVE CLOSING AND OPENING PATTERNS, TRANSFER SERVICE TO ALL CUSTOMERS WITH A MAXIMUM SHUTDOWN TIME OF 8 HOURS.
 - UPON COMPLETION OF ALL SERVICE TRANSFERS, INSTALL CONNECTIONS SHOWN IN WATER MAIN CONNECTION DETAILS 2 AND 3 (ON SHEET 2).
 - ABANDON EXISTING LINE FROM STATION 1+50 TO 13+75. WATER MAIN TO BE ABANDONED SHALL BE PLUGGED AT EACH END. A SECTION OF PIPE 10 FEET LONG SHALL BE CUT OUT OF THE EXISTING LINE AND WATER SHALL BE DRAINED OUT TO THE FULLEST EXTENT POSSIBLE. THE ENDS SHALL BE SEALED WITH A 1-FOOT THICK PLUG OF NON-SHRINK GROUT SEALED WITH A PORTLAND CEMENT GROUT.
- CONTRACTOR TO PROVIDE SUFFICIENT NOTICE TO WATER USERS PRIOR TO SHUT DOWN OF THEIR SERVICE.
- CONTRACTOR TO NOTIFY DEVELOPMENT SERVICES INSPECTIONS PRIOR TO PERFORMING ANY SHUT-DOWNS.
- THE CITY OF LEE'S SUMMIT IS THE ONLY PARTY ALLOWED TO TURN VALVES ON OR OFF.
- DOOR HANGERS MUST BE PLACED ON AFFECTED CUSTOMERS AT LEAST 24 HOURS PRIOR TO THE SCHEDULED DISRUPTION.
- MINIMUM NOTICE OF 48 HOURS SHALL BE GIVEN TO THE CITY OF LEE'S SUMMIT PRIOR TO ANY SHUTDOWN.
- ONCE WORK BEGINS ON A GIVEN PHASE, ALL WORK WITHIN THAT PHASE MUST BE CONTINUOUS UNTIL THE COMPLETION OF THAT PHASE.
- THE MAXIMUM AMOUNT OF TIME FOR ANY WATER CUSTOMER TO BE WITHOUT SERVICE IS 8 HOURS.

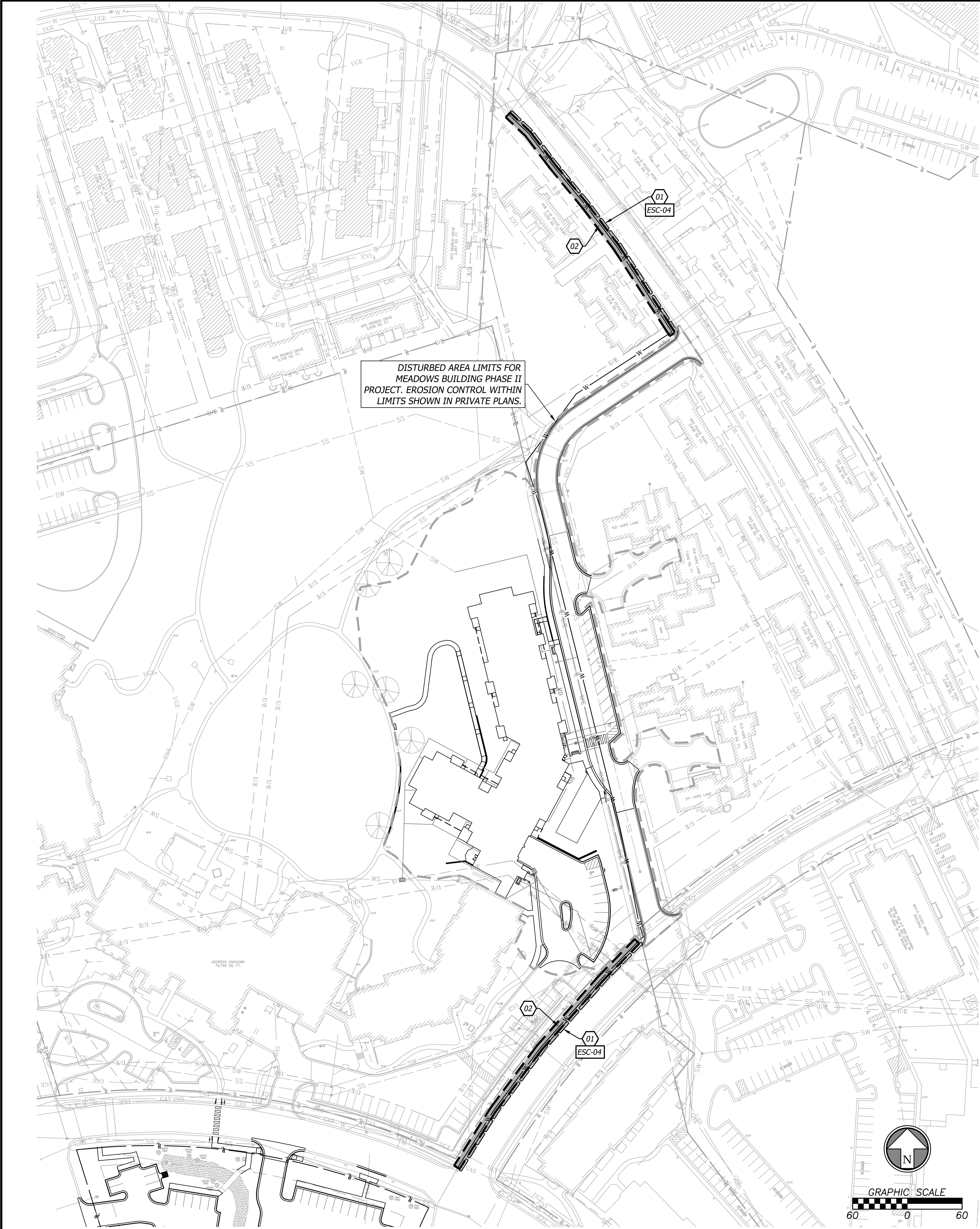
Rev.	Date	Description	By	App.



Prepared For:
JOHN KNOX VILLAGE
1001 NW CHIPMAN RD.
LEE'S SUMMIT, MO 64081
816-251-8000

PUBLIC WATER MAIN IMPROVEMENTS
JOHN KNOX VILLAGE MEADOWS
LEE'S SUMMIT, MO 64081
WATER MAIN PLAN & PROFILE

Design: SKT Drawn: SKT
Checked: ERB
Issue Date: 09/17/2021
Project Number: 028800



CONSTRUCTION NOTES

- 01 EROSION CONTROL WATTLE / BIODEGRADABLE LOG (TYP.) TO BE PLACED AT BACK OF CURB
02 CONTRACTOR TO RESTORE AREAS DISTURBED BY WATER MAIN CONSTRUCTION TO PREVIOUS CONDITION. GRASSY AREAS DISTURBED TO BE RESTORED WITH SOD.

EROSION CONTROL LEGEND

- WATER MAIN DISTURBED AREA LIMITS (0.07 AC)
— PRIVATE PROJECT DISTURBED AREA LIMITS (0.07 AC)
■ DISTURBED AREA TO BE RESTORED
— STRAW WATTLE / BIODEGRADABLE LOG

DETAILS

- SEE EROSION CONTROL DETAIL SHEET FOR THE FOLLOWING

ESC-04 APWA WATTLE / BIODEGRADABLE LOG DETAIL

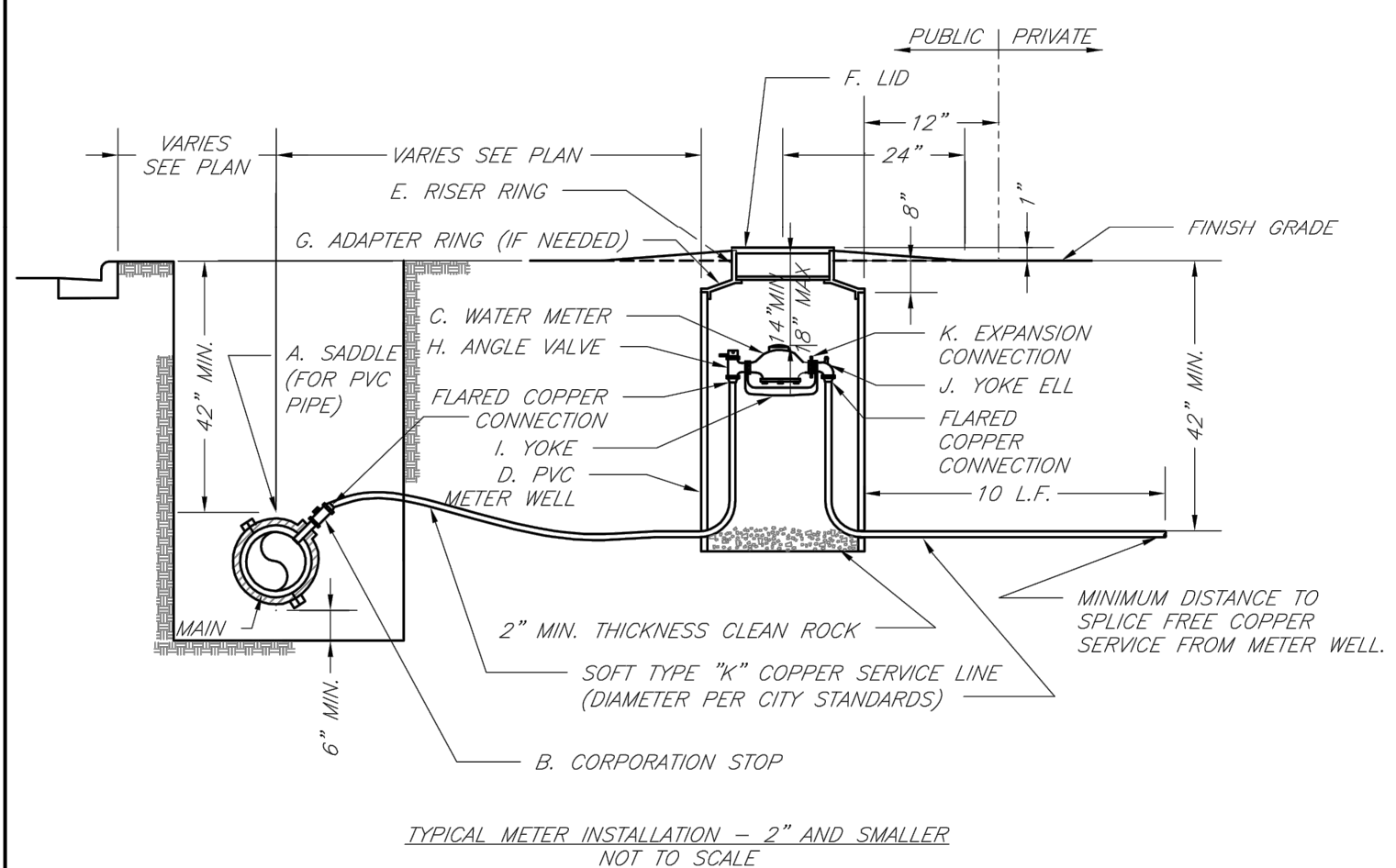
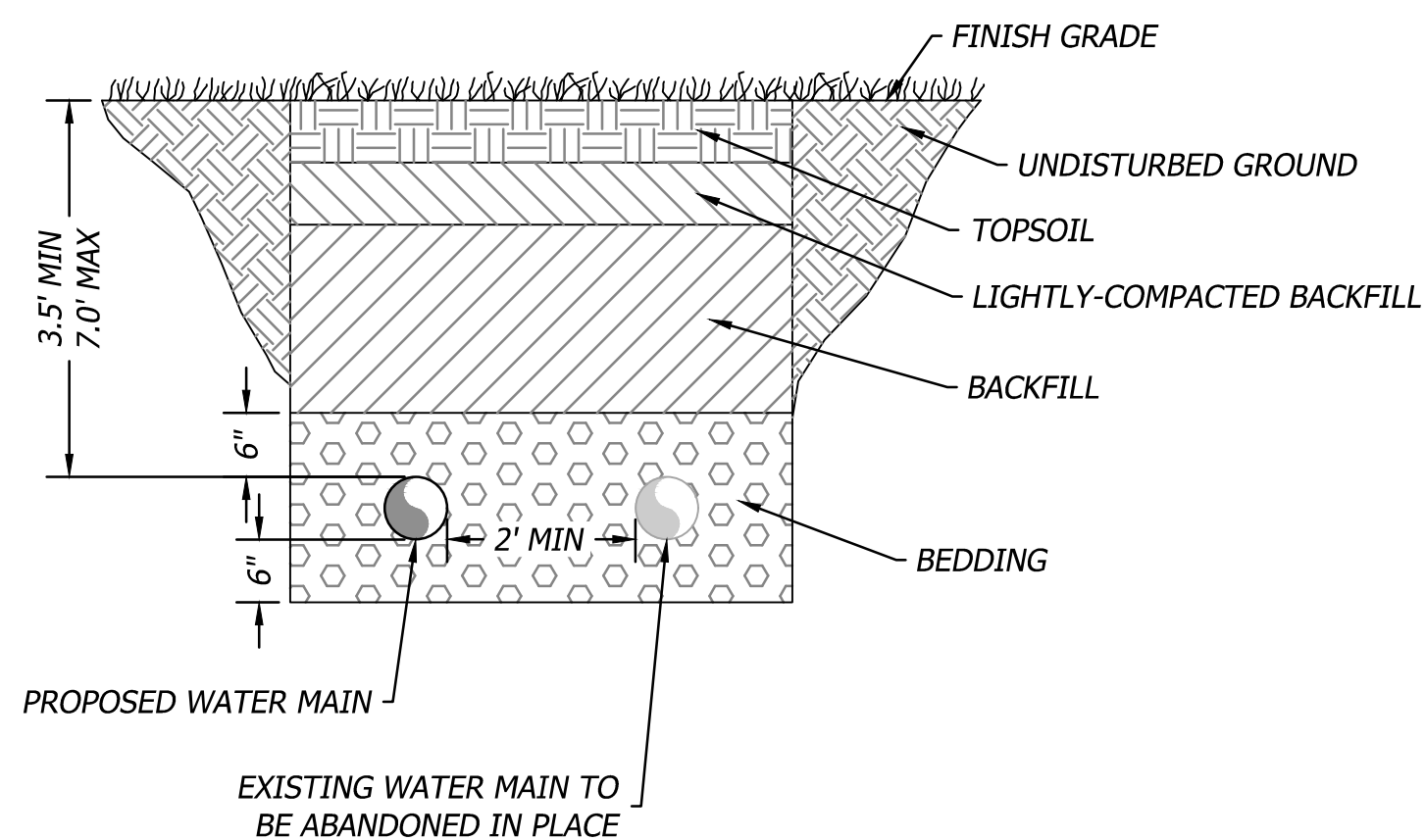
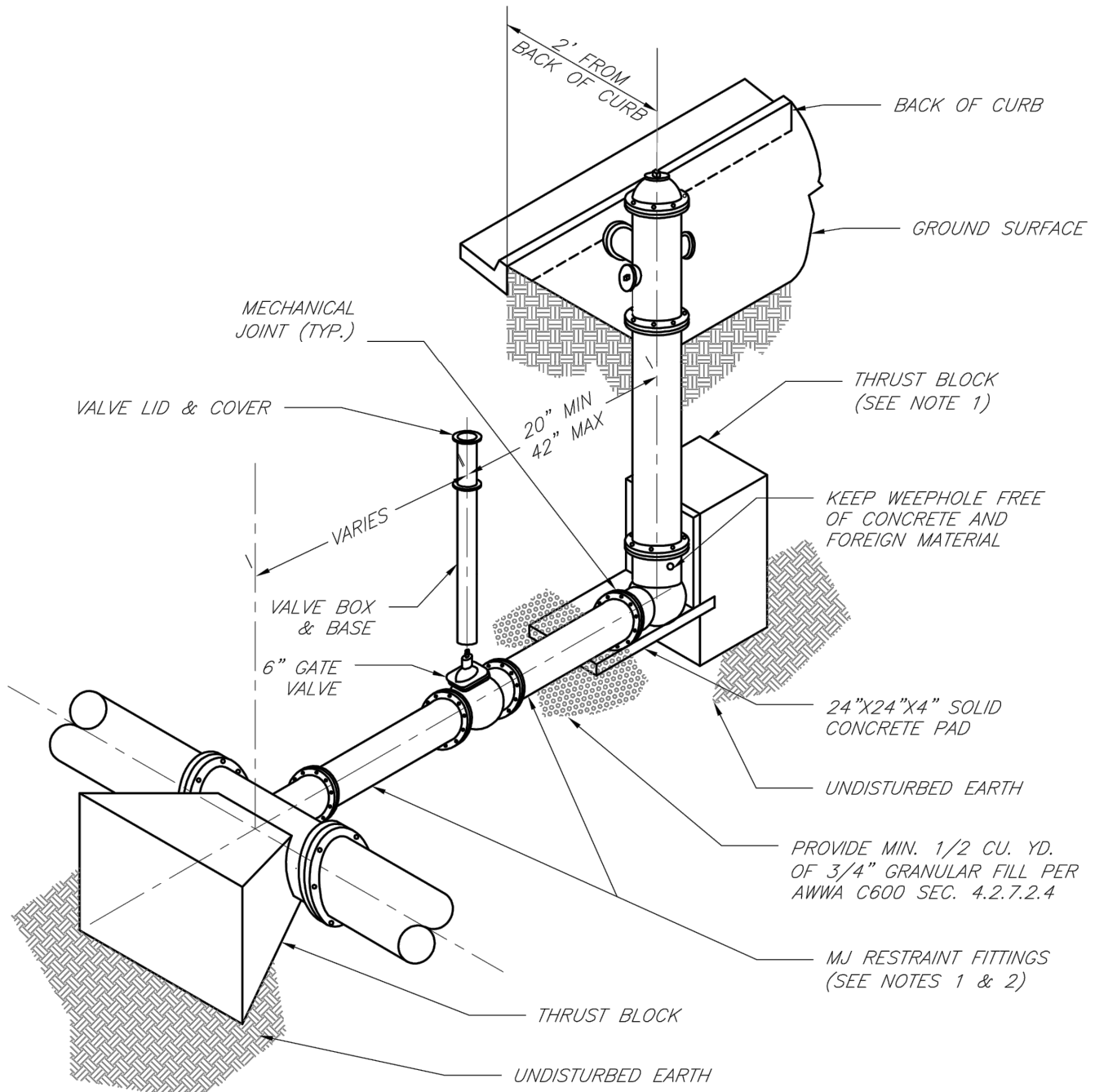
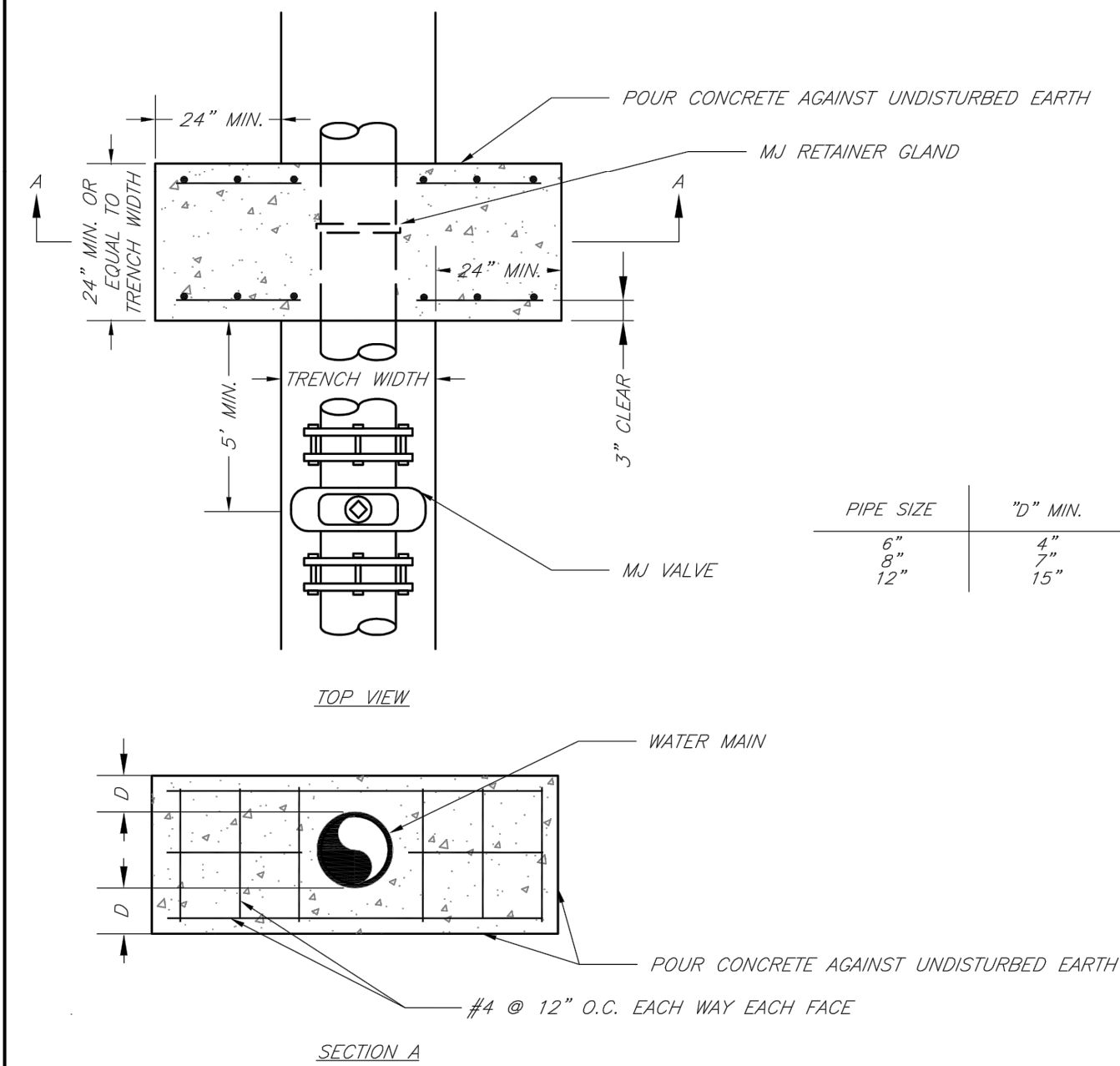
PUBLIC WATER MAIN IMPROVEMENTS JOHN KNOX VILLAGE MEADOWS LEE'S SUMMIT, MO 64081		EROSION CONTROL PLAN		Design: SKT Drawn: SKT Checked: ERB Issue Date: 09/17/2021 Project Number: 028800	
Prepared For: JOHN KNOX VILLAGE 1001 NW CHIPMAN RD. LEE'S SUMMIT, MO 64081 816-251-8000		Professional Engineer ERIC BYRD 09/17/2021 NUMBER PE-2018013633		Rev. Date Description By App.	

NOTES:

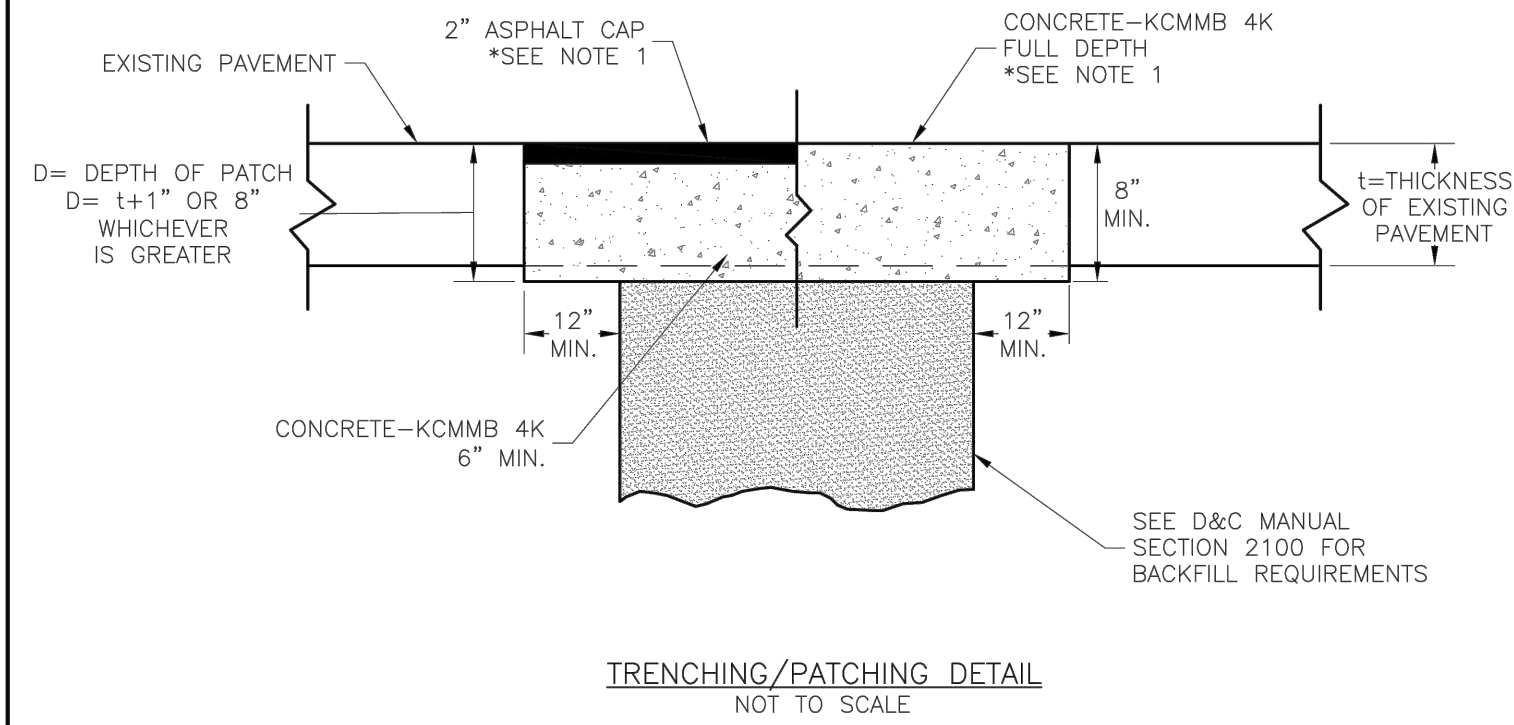
1. ALL BENDS WITHOUT RESTRAINED JOINTS SHALL HAVE CONCRETE THRUST BLOCKS INSTALLED FOR RESTRAINT.
2. MECA LUGS MAY BE USED ONLY IN CONJUNCTION WITH CONCRETE THRUST BLOCKING.
3. BEARING AREA MUST BE AGAINST UNDISTURBED SOIL.
4. DO NOT COVER JOINTS OR BOLTS (WHERE APPLICABLE) WITH CONCRETE.

NOTES:

1. ALL BENDS WITHOUT RESTRAINED JOINTS SHALL HAVE CONCRETE THRUST BLOCKS INSTALLED FOR RESTRAINT.
2. MEGA LUGS MAY BE USED ONLY IN CONJUNCTION WITH CONCRETE THRUST BLOCKING.
3. BEARING MUST BE AGAINST UNDISTURBED SOIL.
4. DO NOT COVER JOINTS OR BOLTS (WHERE APPLICABLE) WITH CONCRETE.

[illegible]

Sep 17, 2021 -- 9:28am Plotted By: Eric Byrd V:\028800--John Knox Village Ph \1\04-DWG\Eng\Sheet\PIP\028800--SHTS--WMAN.dwg Layout: DETAILS (2)



NOTE:
1. ASPHALT CAP OR FULL DEPTH CONCRETE SHALL BE DETERMINED BY CITY INSPECTOR.

LS

LEE'S SUMMIT

MISSOURI

PUBLIC WORKS ENGINEERING DIVISION | 220 SE GREEN STREET | LEE'S SUMMIT, MO 64063

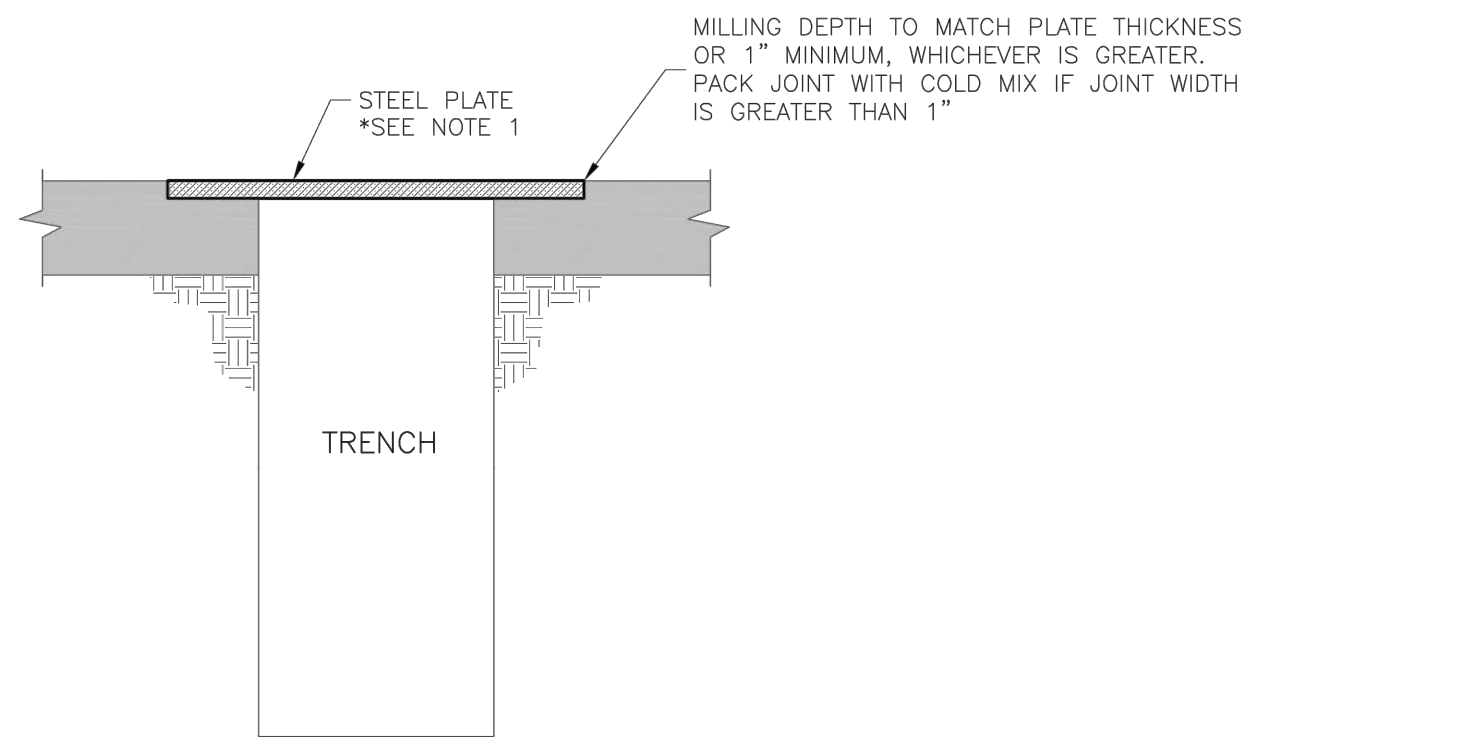
TRENCHING/PATCHING ROADWAYS DETAIL

Date: 04/17

Drawn By: MIF

Checked By: DL

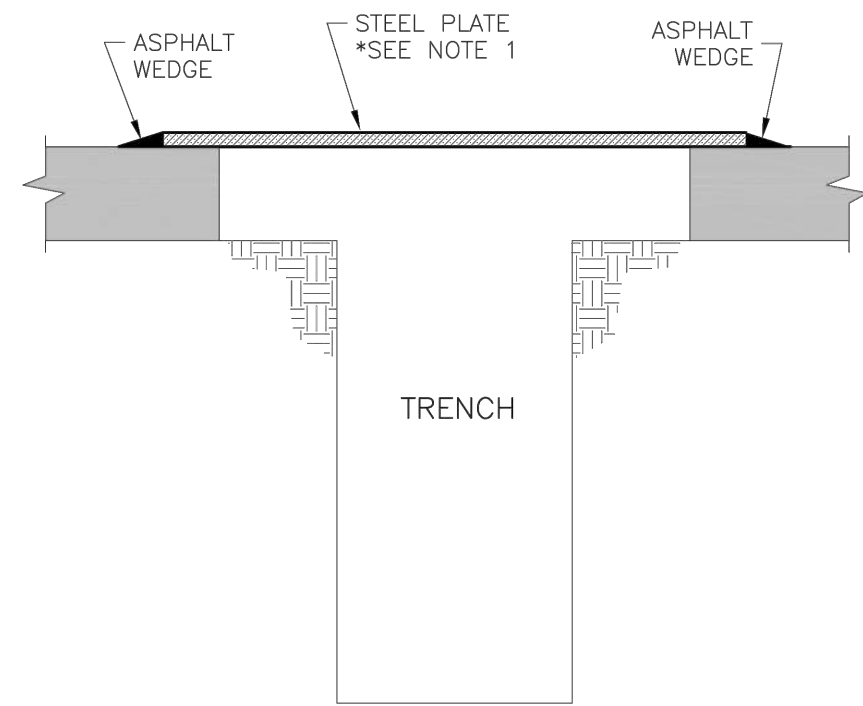
GEN-5



TYPE "A" PLATING
NOT TO SCALE
(CITY POSTED SPEEDS OF
35 MPH AND GREATER)

GENERAL NOTES:

1. THE CONTRACTOR SHALL PROVIDE ADEQUATE OVERLAP OF PLATE ON ASPHALT TO ASSURE NO SLIPPAGE OF PLATE AND NO COLLAPSING OF TRENCH.
2. ALL PLATES SHALL BE ANCHORED SO PLATES DO NOT MOVE OR SHIFT UNDER TRAFFIC.



TYPE "B" PLATING
NOT TO SCALE
(CITY POSTED SPEEDS OF
30 MPH OR LESS)

LS

LEE'S SUMMIT

MISSOURI

PUBLIC WORKS ENGINEERING DIVISION | 220 SE GREEN STREET | LEE'S SUMMIT, MO 64063

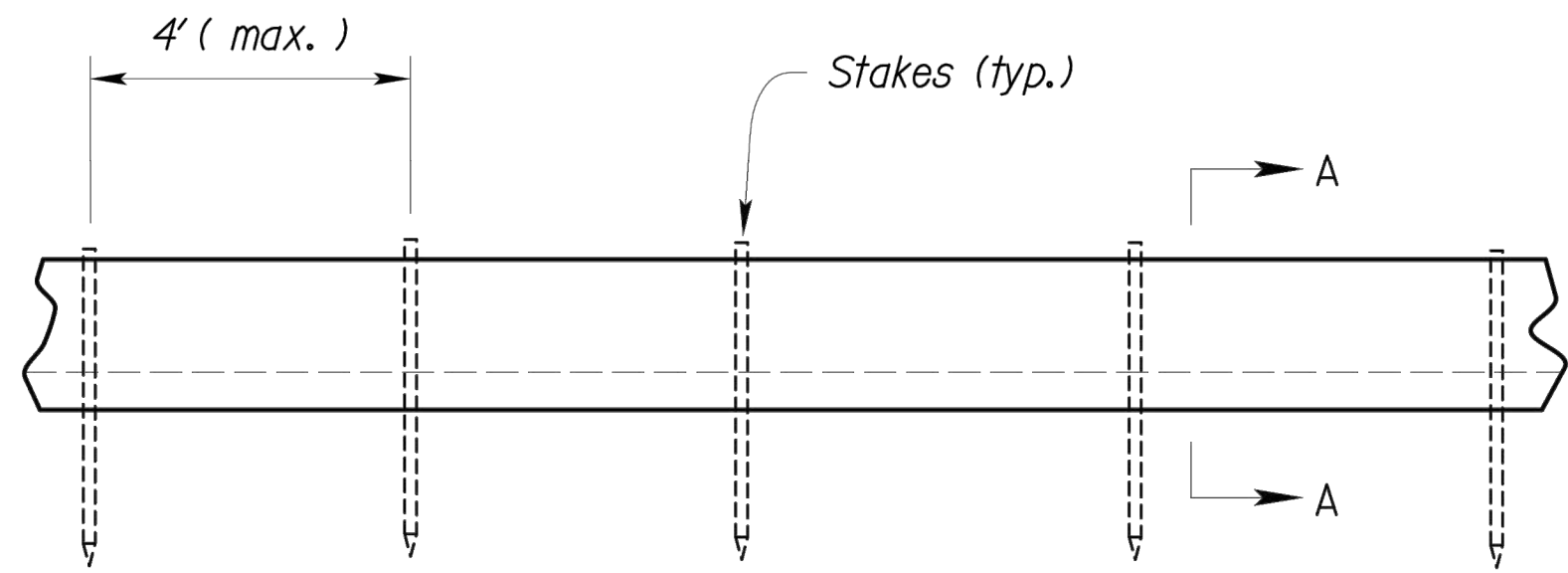
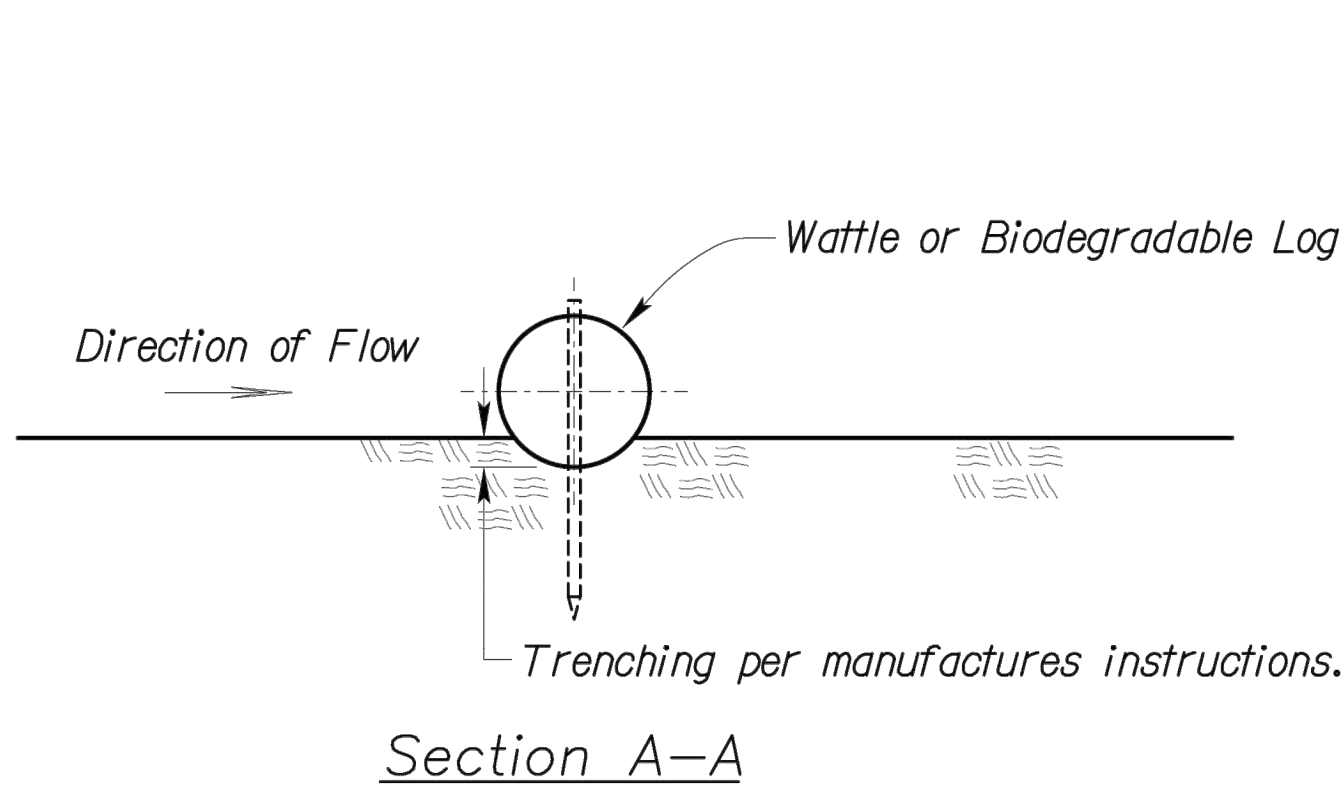
TRENCHING PLATE DETAIL

Date: 04/17

Drawn By: MIF

Checked By: DL

GEN-6



Notes for Wattles and Biodegradable Log Slope Protection:

1. The Slope barriers shall be placed along contour lines, with a short section turned upgrade at each end of the barrier. The maximum length of the slope barrier shall not exceed 250 feet, and the barrier ends need to be staggered.
2. Install wattles and biodegradable logs per manufacturer's instructions.
3. Spacing of stakes per manufacturer's instructions with 4' max. spacing. Length of stakes shall be a minimum of 2 times the diameter of the log with minimum of 24".

AMERICAN PUBLIC WORKS ASSOCIATION

Kansas City Metro Chapter

APWA

AMERICAN PUBLIC WORKS ASSOCIATION

Missouri

Missouri

KANSAS CITY

METRO CHAPTER

WATTLES/BIODEGRADABLE LOG
AND
MULCH/COMPOST FILTER BERM

STANDARD DRAWING
NUMBER ESC-04

ADOPTED:
10/24/2016

Prepared For:
JOHN KNOX VILLAGE
1001 NW CHIPMAN RD.
LEE'S SUMMIT, MO 64081
816-251-8000

PUBLIC WATER MAIN IMPROVEMENTS
JOHN KNOX VILLAGE MEADOWS
LEE'S SUMMIT, MO 64081

WATER MAIN DETAILS 2

Design: SKT | Drawn: SKT
Checked: ERB
Issue Date: 09/17/2021
Project Number: 028800