

PLANT LIST:

Common Name	Botanical Name	Size	Notes
<b>Columnar Trees</b>			
ARM	Armstrong Maple	Acer rubrum 'Armstrong'	2.5' Cal. B&B
CHB	Columnar Hornbeam	Cornus kousa 'Fastidiosa'	2.5' Cal. B&B
GOM	Columnar Sugar Maple	Acer saccharum 'Endowment'	2.5' Cal. B&B
HOV	Heritage Oak	Quercus macrocarpa 'Clemens'	2.5' Cal. B&B
RPO	Columnar Regal Prince Oak	Quercus robur x bicolor 'Long'	2.5' Cal. B&B
<b>Shade Trees</b>			
ABM	Autumn Blaze Maple	Acer x fernaldii 'Autumn Blaze'	2.5' Cal. B&B
AFM	Autumn Fantasy Maple	Acer x fernaldii 'Autumn Fantasy'	2.5' Cal. B&B
BOY	Common Baldcypress	Taxodium distichum	2.5' Cal. B&B
BWM	Brandywine Red Maple	Acer rubrum 'Brandywine'	2.5' Cal. B&B
EQM	Emerald Queen Red Maple	Acer platanoides 'Emerald Queen'	2.5' Cal. B&B
FEU	Frontier Elm	Ulmus carpinifolia x parvifolia 'Frontier'	2.5' Cal. B&B
FFM	Fall Fiesta Sugar Maple	Acer saccharum 'Fall Fiesta'	2.5' Cal. B&B
GNK	Autumn Gold Ginkgo	Ginkgo biloba 'Autumn Gold'	2.5' Cal. B&B
HOV	Heritage Oak	Quercus macrocarpa 'Clemens'	2.5' Cal. B&B
LIL	Greenspire Littleleaf Linden	Tilia cordata 'Greenspire'	2.5' Cal. B&B
LPT	London Plane Tree	P. x acerifolia 'Bloodgood'	2.5' Cal. B&B
LJM	Legacy Sugar Maple	Acer saccharum 'Legacy'	2.5' Cal. B&B
NSM	Norwegian Sunset Maple	Acer truncatum x A. platanoides 'Kathiaform'	2.5' Cal. B&B
OGM	October Glory Red Maple	Acer rubrum 'October Glory'	2.5' Cal. B&B
PSM	Pacific Sunset Maple	Acer truncatum x A. platanoides 'Warrenred'	2.5' Cal. B&B
ROK	Red Oak	Quercus rubra	2.5' Cal. B&B
SGM	Sienna Glen Maple	Acer x fernaldii 'Sienna'	2.5' Cal. B&B
SOA	Shuttleworth Norway Spruce	Quercus tinctoria	2.5' Cal. B&B
SOK	Shumard Oak	Quercus shumardii	2.5' Cal. B&B
SMV	Sun Valley Maple	Acer rubrum 'Sun Valley'	2.5' Cal. B&B
SWO	Swamp White Oak	Quercus bicolor	2.5' Cal. B&B
ZEL	Zelkova	Zelkova serrata 'Green Vase'	2.5' Cal. B&B
ZEL	Columnar Zelkova	Zelkova serrata 'Muschini'	2.5' Cal. B&B
<b>Evergreen Trees</b>			
BSP	Bakeri Blue Spruce	Picea pungens 'Bakeri'	6' Ht. B&B
CNS	Columnar Norway Spruce	Picea abies 'Cupressina'	6' Ht. B&B
ERC	Red Cedar	Juniperus virginiana	6' Ht. B&B
NVS	Norway Spruce	Picea abies	6' Ht. B&B
RSS	Riverside Upright Spruce	Picea omorika 'Riverside'	6' Ht. B&B
SBS	Serbian Spruce	Picea omorika	6' Ht. B&B
WSS	Welspire Spruce	Picea mariana 'Welspire'	6' Ht. B&B
<b>Ornamental Trees</b>			
CBC	Corallburst Crabapple	Malus 'Corallburst'	2' cal. B&B
CPP	Crimson Pointe Plum	Prunus x cerasifera 'Crispizum'	2' cal. B&B
ERE	Eastern Redbud	Cercis canadensis	2' cal. B&B
FLD	Flowering Dogwood	Cornus Florida	2' cal. B&B
JTL	Japanese Tree Lilac	Syringa reticulata	2' cal. B&B
MAO	Evergreen Magnolia	Magnolia grandiflora 'DD Blanchard'	2' cal. B&B
PFC	Prairie Fire Crabapple	Malus x 'Prairie Fire'	2' cal. B&B
RVB	River Birch	Betula Nigra	2' cal. B&B
SBM	Swansea Magnolia	Magnolia virginiana v. australis	2' cal. B&B
SSC	Spring Snow Crabapple	Malus 'Spring Snow'	2' cal. B&B
SVB	Serviceberry	Amelanchier canadensis	2' cal. B&B
WBD	Whitebud	Cercis canadensis 'White Bud'	2' cal. B&B

PRELIMINARY PLANT LIST SUBJECT TO CHANGE.

LANDSCAPE REQUIREMENTS:

STREET FRONTAGE:  
(8.790.A.1): 1 TREE PER 30 L.F.

BLUE PARKWAY = +/- 1,103 L.F. /30 = 37  
FUTURE ROAD = +/- 1,143 L.F. /30 = 39

(8.790.A.2): N/A

(8.790.A.3): 1 SHRUB PER 20 L.F.

BLUE PARKWAY = +/- 1,103 L.F. /20 = 56  
FUTURE ROAD = +/- 1,143 L.F. /20 = 58

OPEN YARD AREAS:

(8.790.B.1): 2 SHRUBS PER 5,000 S.F. OF TOTAL LOT AREA

TOTAL LOT AREA = +/- 744,806 S.F. /5,000 = 149 \* 2 = 298

(8.790.B.2): ACKNOWLEDGED

(8.790.B.3): 1 TREE PER 5,000 S.F. OF TOTAL LOT AREA

TOTAL LANDSCAPED OPEN SPACE = +/- 445,403 S.F. / 5,000 = 89

(8.790.C): SEE ARCHITECTURAL ELEVATIONS FOR ARCHITECTURAL SCREENING.  
ADDITIONAL LANDSCAPE SCREENING SHOWN BELOW.

LANDSCAPE STRIPS ALONG STREET FRONTAGE:  
(8.800.A-C): ACKNOWLEDGED

PARKING LOT AND LOADING AREA LANDSCAPING:

(8.810.A): TOTAL PARKING AREA = 223,108 S.F. \* 5% = 11,156 S.F. MIN.  
(8.810.B-D): ACKNOWLEDGED

SCREENING, PARKING LOT:

(8.820.A): ACKNOWLEDGED

(8.820.B): ACKNOWLEDGED

(8.820.C): SCREENING ACHIEVED USING METHOD 4 "COMBINATION". DETACHED GARAGES LINE THE PERIMETER & ARE DESIGNED W/ THE SAME ARCHITECTURAL AESTHETIC AS THE BUILDINGS (C.3 "WALL"), & THE LANDSCAPING PROVIDED UNDER SEC. 8.870.A.3 FOR STREET FRONTAGE PROVIDED WILL BE CONSOLIDATED AT THE GAPS TO MEET THE DENSITY OF C.1 "PLANTED".

(8.820.D): ACKNOWLEDGED

(8.820.E): ACKNOWLEDGED

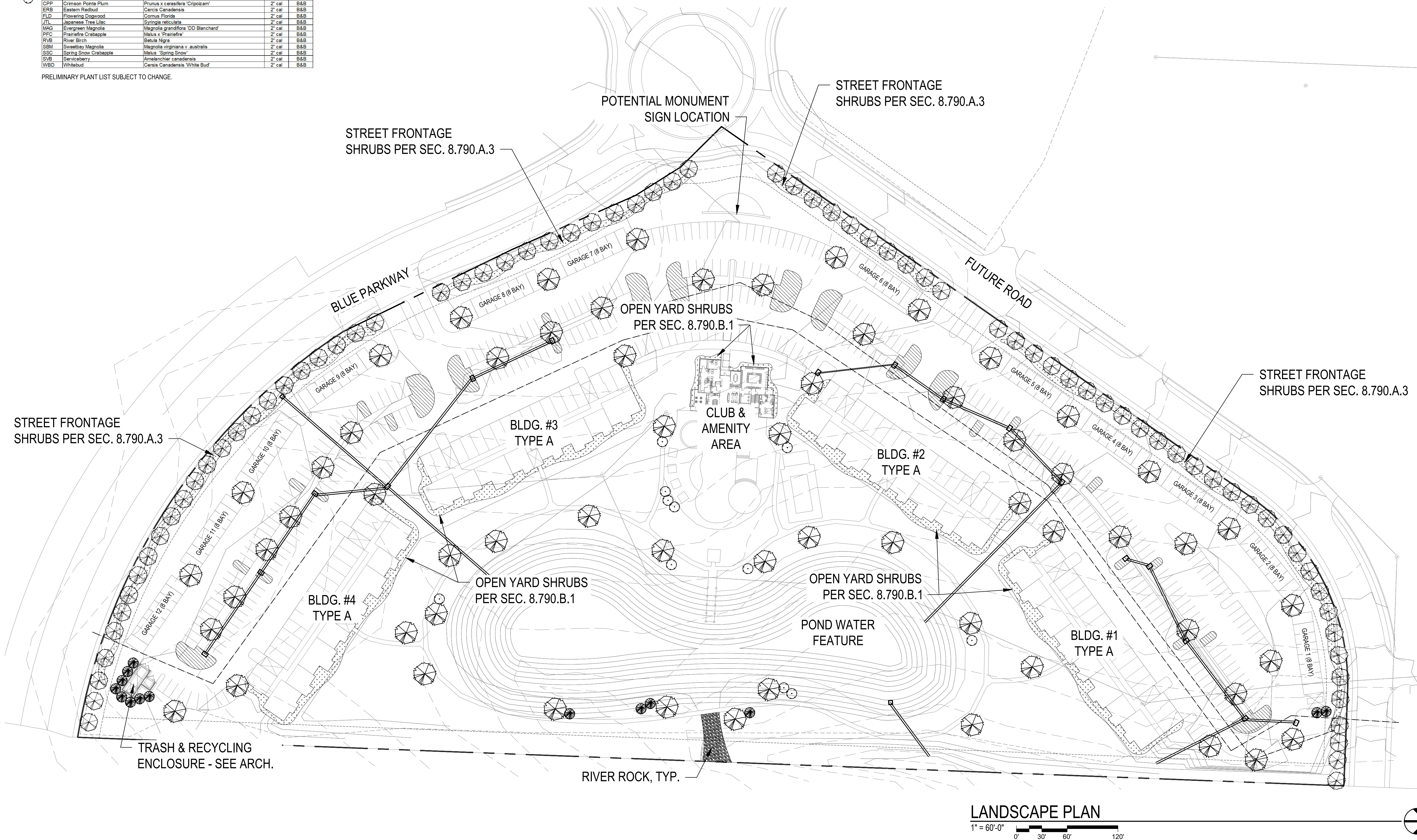
(8.870): N/A

STREET FRONTAGE SHRUB HATCH  
OPEN YARD AREA SHRUB HATCH

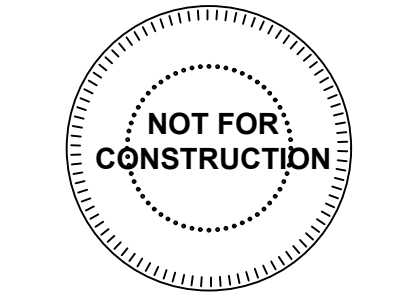
PARKING AND LOADING AREA SHRUB HATCH

GENERAL NOTES:

- EACH BIDDER SHALL VISIT THE SITE OF THE PROPOSED WORK AND EXAMINE THE SITE CONDITIONS. HE SHALL ALSO CAREFULLY EXAMINE THE DRAWINGS FOR THE PROPOSED WORK AND FAMILIARIZE HIMSELF WITH ALL CONDITIONS, WHICH MAY AFFECT THE PROPOSED WORK.
- THE PLANTING PLAN GRAPHICALLY ILLUSTRATES OVERALL PLANT MASSINGS. EACH PLANT SPECIES MASSING SHALL BE PLACED IN THE FIELD TO UTILIZE GREATEST COVERAGE OF GROUND PLANE. THE FOLLOWING APPLIES FOR INDIVIDUAL PLANTINGS:
  - CREeping GROUNDcover SHALL BE A MINIMUM OF 6" FROM PAVING EDGE.
  - ALL TREES SHALL BE A MINIMUM OF 3' FROM PAVING EDGE.
  - ALL PLANTS OF THE SAME SPECIES SHALL BE EQUALLY SPACED APART AND PLACED FOR BEST AESTHETIC VIEWING.
  - ALL SHRUBS SHALL BE A MINIMUM OF 2' FROM PAVED EDGE.
- NOTIFY LANDSCAPE ARCHITECT 1 WEEK PRIOR TO ANTICIPATED START OF PLANT MATERIAL INSTALLATION. LANDSCAPE CONTRACTOR SHALL STAKE ALL PROPOSED PLANTING BED EDGES, SET OUT SHRUBS IN INTENDED LOCATIONS, AND STAKE TREE LOCATIONS FOR APPROVAL BY LANDSCAPE ARCHITECT PRIOR TO INSTALLATION.
- ALL NEW PLANT BED AREAS TO BE IRRIGATED. REFER TO SPECIFICATIONS FOR IRRIGATION SYSTEM DESCRIPTION.
- IN THE EVENT OF WORK IN OR ON THE SANITARY MAIN, ANY TREES OR PLANTINGS PLACED WITHIN THE SEWER EASEMENT MAY BE REMOVED WITHOUT REPLACEMENT OR COMPENSATION THERE OF AND SHALL BE REPLACED BY THE PROPERTY OWNER AS REQUIRED BY THE CITY.
- STRIP TOP SOIL & SAVE FOR PLANTING AREAS. EXCAVATE TO A DEPTH OF 18" FOR ALL PLANTING BEDS AND REPLACE WITH PLANTING SOIL MIX. REFER TO L3.00 FOR PLANTING SOIL MIX.
- ROCK BEDS SHALL BE BUFFALO RIVER ROCK, 3"-8" SIZE, BY HOUSE OF ROCKS OR APPROVED EQUAL. ALL ROCK BED AREAS SHALL HAVE FILTER FABRIC & BE 4" MIN. DEPTH.



PRELIMINARY DEVELOPMENT PLAN



REVISIONS

DATE  
07/23/2021  
JOB NO.

DRAWN BY: