

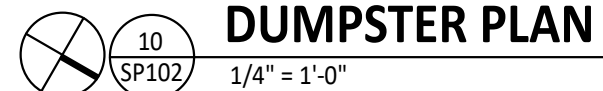
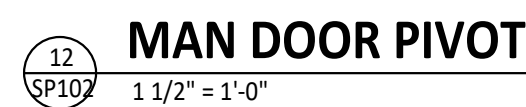
<u>MATERIAL</u>	<u>COLOR/FINISH</u>
CMU - PRIMER	REFER TO PAINT SPECIFICATIONS, COLOR 'WHITE'
CMU	REFER TO PAINT SPECIFICATIONS
METAL COPING	PREFINISHED TO MATCH PAINTED CMU
CORRUGATED METAL & DOOR FRAMES	PAINTED 'KNIGHTS ARMOR' PPG 1001-6

COPYRIGHT 2021
ALL DRAWINGS AND SPECIFICATIONS SHALL
REMAIN THE PROPERTY OF RED ARCHITECTURE +
PLANNING LLC AND MAY NOT BE USED,
DUPLICATED OR ALTERED WITHOUT THE WRITTEN
CONSENT OF THE ARCHITECT.



The logo for Red Architecture + Planning features a stylized 'R' composed of vertical and horizontal blue lines. To the right of the 'R' is a circular emblem with concentric blue lines. Below these elements, the word 'CADENCE' is written in a large, blue, serif font, with a horizontal line above it. Underneath 'CADENCE', the words 'COMMERCIAL REAL ESTATE' are written in a smaller, blue, sans-serif font.

CADENCE COMMERCIAL REAL ESTATE
INTERNET: WWW.CADENCEVC.COM

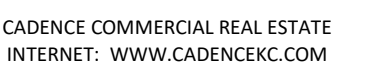
[illegible]

SP102

1.	FUTURE SIGNAGE PROVIDED BY TSV AND INSTALLED BY TSV. COORDINATE BLOCKING.
----	---

red

COPYRIGHT 2021
ALL DRAWINGS AND SPECIFICATIONS SHALL
REMAIN THE PROPERTY OF RED ARCHITECTURE +
PLANNING LLC AND MAY NOT BE USED,
DUPLICATED OR ALTERED WITHOUT THE WRITTEN
CONSENT OF THE ARCHITECT.

[illegible]

Contents:

A301

