



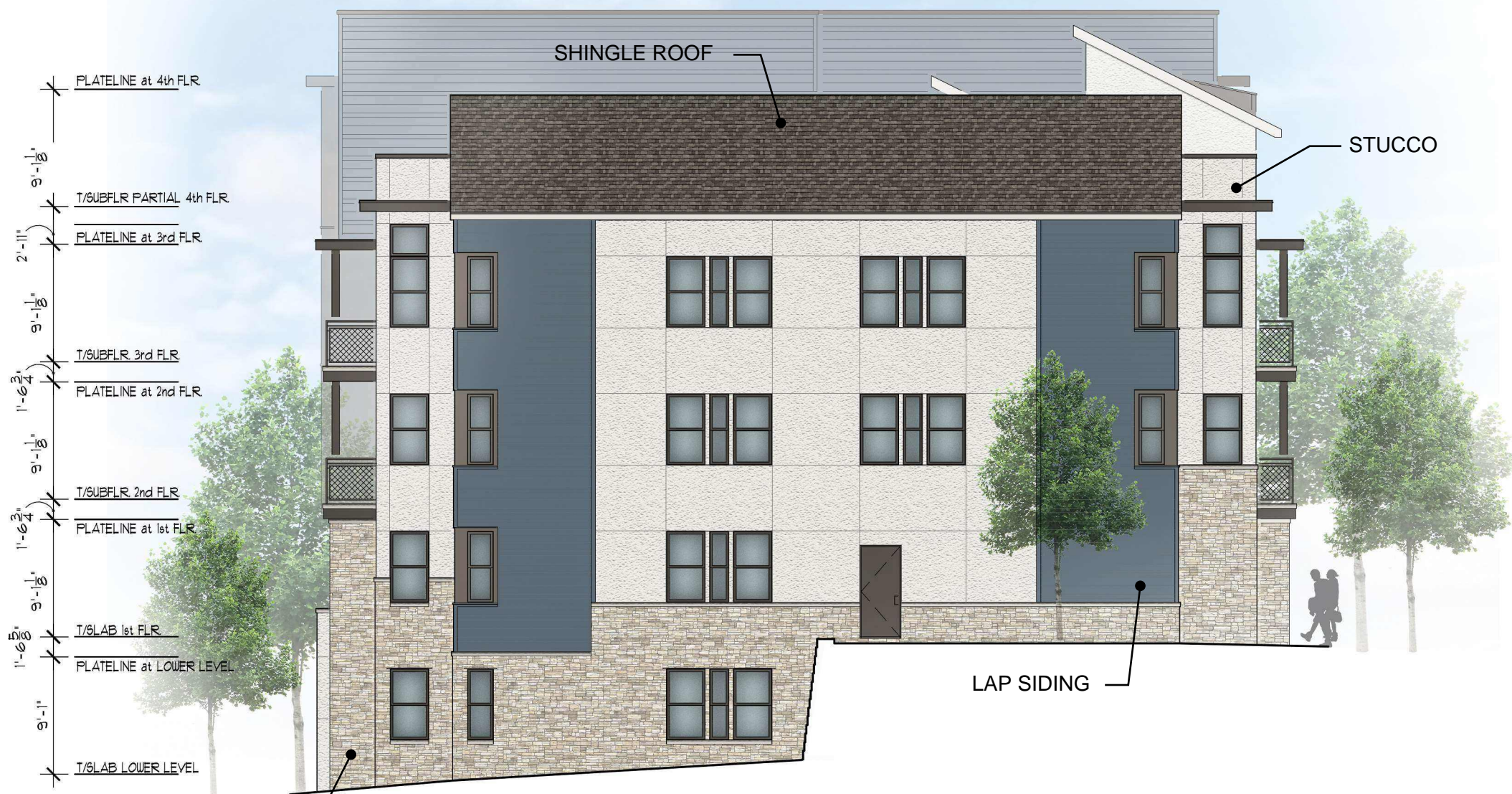
APARTMENT BUILDING
FRONT ELEVATION

3/32" = 1'-0"



APARTMENT BUILDING
RIGHT ELEVATION

3/32" = 1'-0"



APARTMENT BUILDING
LEFT ELEVATION

3/32" = 1'-0"



APARTMENT BUILDING
REAR ELEVATION

3/32" = 1'-0"