

PLANT LIST:

Existing Trees to be Removed				
Common Name		Botanical Name	Size	Notes
Shade Trees				
ARM	Armstrong Maple	Acer fremontii 'Armstrong'	2" Cal	B&B
CHB	Columnar Hornbeam	Carpinus betulus 'Fastigata'	2" Cal	B&B
COM	Columnar Sugar Maple	Acer saccharum 'Endowment'	2" Cal	B&B
HOK	Heritage Oak	Quercus macdonnellii 'Clemens'	2" Cal	B&B
RPO	Columnar Royal Prince Oak	Quercus robur x bicolor 'Long'	2" Cal	B&B
ABM	Autumn Blaze Maple	Acer x fernaldii 'Autumn Blaze'	2" Cal	B&B
AFM	Autumn Fantasy Maple	Acer x fernaldii 'Autumn Fantasy'	2" Cal	B&B
BCV	Common Baldcypress	Taxodium distichum	2" Cal	B&B
BVM	Brandywine Red Maple	Acer rubrum 'Brandywine'	2" Cal	B&B
COM	Crimson Queen Red Maple	Acer platanoides 'Crimson Queen'	2" Cal	B&B
FEM	Frontier Elm	Ulmus carpinifolia x parvifolia 'Frontier'	2" Cal	B&B
FFM	Fall Fiesta Sugar Maple	Acer saccharum 'Fall Fiesta'	2" Cal	B&B
GRN	Autumn Gold Ginkgo	Ginkgo biloba 'Autumn Gold'	2" Cal	B&B
HOK	Heritage Oak	Quercus macdonnellii 'Clemens'	2" Cal	B&B
LLL	Greenleaf Linden	Tilia cordata 'Greenleaf'	2" Cal	B&B
LPT	London Plane Tree	Platanus acerifolia 'Bloodgood'	2" Cal	B&B
LSM	Legacy Sugar Maple	Acer saccharum 'Legacy'	2" Cal	B&B
NSM	Norwegian Sunset Maple	Acer truncatum x A. platanoides 'Kalthaform'	2" Cal	B&B
OGM	October Glory Red Maple	Acer rubrum 'October Glory'	2" Cal	B&B
PSM	Pacific Sunset Maple	Acer truncatum x A. platanoides 'Warrenred'	2" Cal	B&B
RPO	Red Oak	Quercus rubra	2" Cal	B&B
SGM	Senna Glen Maple	Acer x fernaldii 'Senna'	2" Cal	B&B
SKH	Skyline Honeylocust	Gleditsia triacanthos 'Skyline'	2" Cal	B&B
SOX	Summit Oak	Quercus shumardii	2" Cal	B&B
SVM	Sun Valley Maple	Acer rubrum 'Sun Valley'	2" Cal	B&B
SWO	Swamp White Oak	Quercus bicolor	2" Cal	B&B
ZEL	Zelkova	Zelkova serrata 'Green Vase'	2" Cal	B&B
Evergreen Trees				
ARB	Thuja orientalis	Oriental Arborvitae	6" Ht	B&B
BSP	Bakeri Blue Spruce	Picea pungens 'Bakeri'	6" Ht	B&B
CBS	Columnar Blue Spruce	Picea pungens 'Blue Totem'	6" Ht	B&B
CNS	Columnar Norway Spruce	Picea abies 'Cupressata'	6" Ht	B&B
ERC	Red Cedar	Juniperus virginiana	6" Ht	B&B
KTJ	Katahdin Juniper	Juniperus chinensis 'Katahdin'	6" Ht	B&B
NWS	Norway Spruce	Picea abies	6" Ht	B&B
SBS	Serbian Spruce	Picea omorika	6" Ht	B&B
TJL	Taylor Juniper	Taylor Upright Juniper	6" Ht	B&B
RSS	Riverside Upright Spruce	Picea omorika 'Riverside'	6" Ht	B&B
WSS	Walleisre Spruce	Picea mariana 'Walleisre'	6" Ht	B&B
Ornamental Trees				
CBC	Coralburst Crabapple	Malus 'Coralburst'	1" cal	B&B
CPP	Crimson Pointe Plum	Prunus x cerasifera 'Crimson Pointe'	1" cal	B&B
ERB	Eastern Redbud	Cercis canadensis	1" cal	B&B
FLD	Flowering Dogwood	Cornus florida	1" cal	B&B
HGC	Harvest Gold Crabapple	Malus 'Harvest Gold'	1" cal	B&B
MAG	Evergreen Magnolia	Magnolia grandiflora 'DD Blanchard'	1" cal	B&B
PFC	Prairie Fire Crabapple	Malus x 'Prairie Fire'	1" cal	B&B
RRG	Royal Red Crabapple	Malus 'Royal Red'	1" cal	B&B
RVB	River Birch	Betula nigra	1" cal	B&B
SBM	Sweetbay Magnolia	Magnolia virginiana v. australis	1" cal	B&B
SSC	Spring Snow Crabapple	Malus 'Spring Snow'	1" cal	B&B
SVB	Autumn Brilliance Serviceberry	Amelanchier canadensis 'Autumn Brilliance'	1" cal	B&B
WBD	Whitebud	Cercis canadensis 'White Bud'	1" cal	B&B

PRELIMINARY PLANT LIST SUBJECT TO CHANGE.

LANDSCAPE REQUIREMENTS:

STREET FRONTAGE:
(8.790.A.1): 1 TREE PER 30 L.F.

BLUE PARKWAY = +/- 1,103 L.F. /30 = 37
FUTURE ROAD = +/- 1,143 L.F. /30 = 39

(8.790.A.2): N/A

(8.790.A.3): 1 SHRUB PER 20 L.F.

BLUE PARKWAY = +/- 1,103 L.F. /20 = 56
FUTURE ROAD = +/- 1,143 L.F. /20 = 58

OPEN YARD AREAS:

(8.790.B.1): 2 SHRUBS PER 5,000 S.F. OF TOTAL LOT AREA

TOTAL LOT AREA = +/- 744,806 S.F. /5,000 = 149 * 2 = 298

(8.790.B.2): ACKNOWLEDGED

(8.790.B.3): 1 TREE PER 5,000 S.F. OF TOTAL LOT AREA

TOTAL LANDSCAPED OPEN SPACE = +/- 445,403 S.F. / 5,000 = 89

(8.790.C): SEE ARCHITECTURAL ELEVATIONS FOR ARCHITECTURAL SCREENING. ADDITIONAL LANDSCAPE SCREENING SHOWN BELOW.

LANDSCAPE STRIPS ALONG STREET FRONTAGE:
(8.800.A-C): ACKNOWLEDGED

PARKING LOT AND LOADING AREA LANDSCAPING:

(8.810.A): TOTAL PARKING AREA = 223,108 S.F. * 5% = 11,156 S.F. MIN.
(8.810.B-D): ACKNOWLEDGED

SCREENING, PARKING LOT:
(8.820.A): ACKNOWLEDGED

(8.820.B): ACKNOWLEDGED

(8.820.C): SCREENING ACHIEVED USING METHOD 4 "COMBINATION". DETACHED GARAGES LINE THE PERIMETER & ARE DESIGNED W/ THE SAME ARCHITECTURAL AESTHETIC AS THE BUILDINGS (C.3 "WALL"), & THE LANDSCAPING PROVIDED UNDER SEC. 8.870.A.3 FOR STREET FRONTAGE PROVIDED WILL BE CONSOLIDATED AT THE GAPS TO MEET THE DENSITY OF C.1 "PLANTED".

(8.820.D): ACKNOWLEDGED

(8.820.E): ACKNOWLEDGED

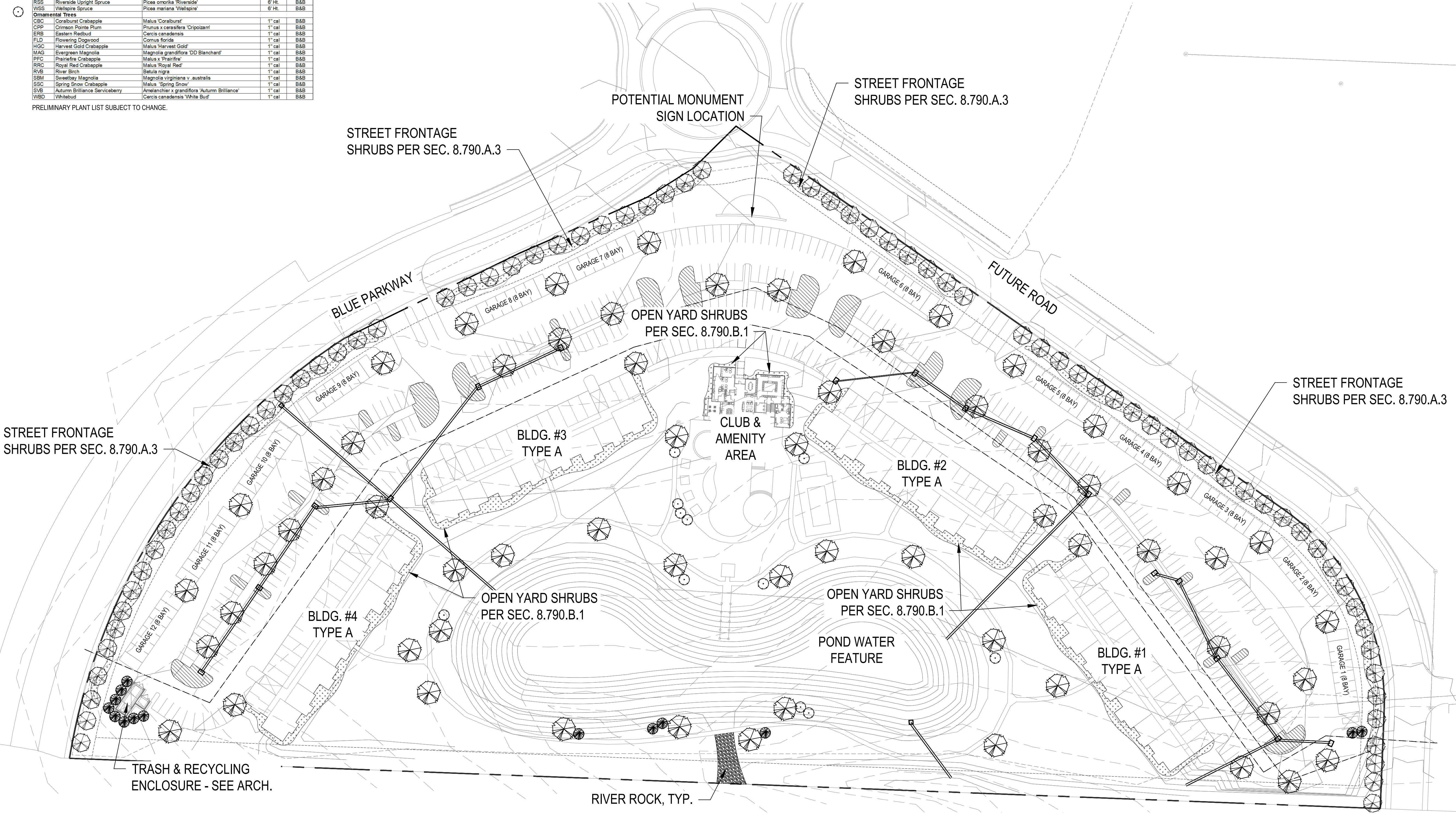
(8.870): N/A

STREET FRONTAGE SHRUB HATCH
OPEN YARD AREA SHRUB HATCH

PARKING AND LOADING AREA SHRUB HATCH

GENERAL NOTES:

- EACH BIDDER SHALL VISIT THE SITE OF THE PROPOSED WORK AND EXAMINE THE SITE CONDITIONS. HE SHALL ALSO CAREFULLY EXAMINE THE DRAWINGS FOR THE PROPOSED WORK AND FAMILIARIZE HIMSELF WITH ALL CONDITIONS, WHICH MAY AFFECT THE PROPOSED WORK.
- THE PLANTING PLAN GRAPHICALLY ILLUSTRATES OVERALL PLANT MASSINGS. EACH PLANT SPECIES MASSING SHALL BE PLACED IN THE FIELD TO UTILIZE GREATEST COVERAGE OF GROUND PLANE. THE FOLLOWING APPLIES FOR INDIVIDUAL PLANTINGS:
 - CREeping GROUNDcover SHALL BE A MINIMUM OF 6" FROM PAVING EDGE.
 - ALL TREES SHALL BE A MINIMUM OF 3' FROM PAVING EDGE.
 - ALL PLANTS OF THE SAME SPECIES SHALL BE EQUALLY SPACED APART AND PLACED FOR BEST AESTHETIC VIEWING.
 - ALL SHRUBS SHALL BE A MINIMUM OF 2' FROM PAVED EDGE.
- NOTIFY LANDSCAPE ARCHITECT 1 WEEK PRIOR TO ANTICIPATED START OF PLANT MATERIAL INSTALLATION. LANDSCAPE CONTRACTOR SHALL STAKE ALL PROPOSED PLANTING BED EDGES, SET OUT SHRUBS IN INTENDED LOCATIONS, AND STAKE TREE LOCATIONS FOR APPROVAL BY LANDSCAPE ARCHITECT PRIOR TO INSTALLATION.
- ALL NEW PLANT BED AREAS TO BE IRRIGATED. REFER TO SPECIFICATIONS FOR IRRIGATION SYSTEM DESCRIPTION.
- IN THE EVENT OF WORK IN OR ON THE SANITARY MAIN, ANY TREES OR PLANTINGS PLACED WITHIN THE SEWER EASEMENT MAY BE REMOVED WITHOUT REPLACEMENT OR COMPENSATION THERE OF AND SHALL BE REPLACED BY THE PROPERTY OWNER AS REQUIRED BY THE CITY.
- STRIP TOP SOIL & SAVE FOR PLANTING AREAS. EXCAVATE TO A DEPTH OF 18" FOR ALL PLANTING BEDS AND REPLACE WITH PLANTING SOIL MIX. REFER TO L3.00 FOR PLANTING SOIL MIX.
- ROCK BEDS SHALL BE BUFFALO RIVER ROCK, 3"-8" SIZE, BY HOUSE OF ROCKS OR APPROVED EQUAL. ALL ROCK BED AREAS SHALL HAVE FILTER FABRIC & BE 4" MIN. DEPTH.



LANDSCAPE PLAN

1" = 60'-0"
0' 30' 60' 120'

PRELIMINARY DEVELOPMENT PLAN

A NEW DEVELOPMENT FOR:

GRIFFIN RILEY

50 HWY & BLACKWELL
LEE'S SUMMIT, MISSOURI

DRAWING RELEASE LOG
07/23/2021 - PDP SUBMITTAL

REVISIONS

DATE
07/23/2021
JOB NO.

DRAWN BY:

SHEET NO.

L1.00

ARCHITECTURE
LANDSCAPE
ARCHITECTURE
ENERGY SERVICES
P. 913.831.1415
F. 913.831.1563
NSPIARCH.COM
© COPYRIGHT 2021

ARCHITECTS
3515 W. 75TH ST., SUITE 201
PRAIRIE VILLAGE, KS 66208

