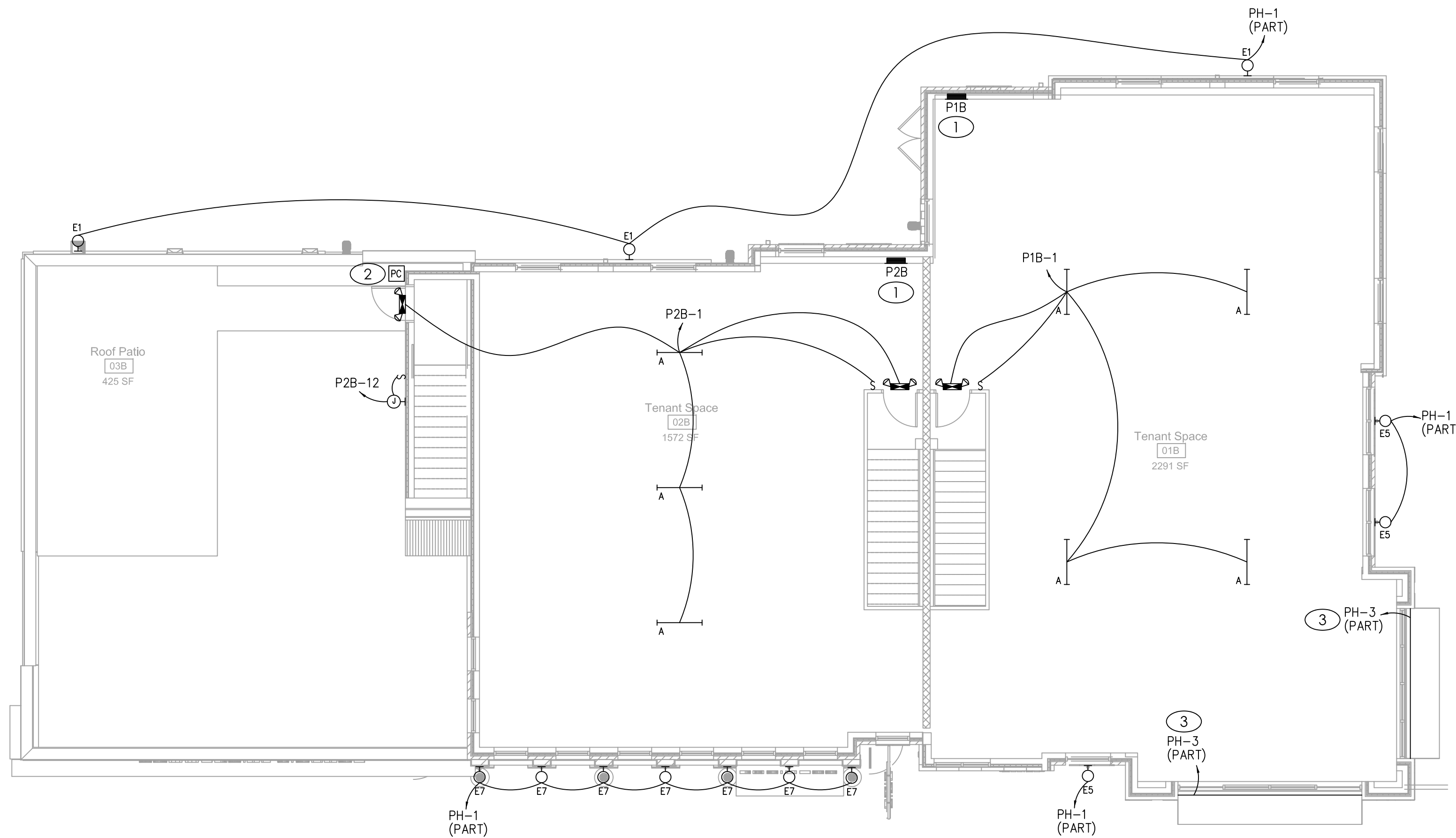


GENERAL NOTES

- A. REFER TO ARCHITECTURAL DRAWINGS AND ELEVATIONS FOR EXACT LOCATIONS AND MOUNTING HEIGHTS OF ALL LIGHTING FIXTURES.
- B. REFER TO LIGHTING FIXTURE SCHEDULE FOR LIGHT FIXTURE TYPES AND REQUIREMENTS.
- C. CONNECT ALL EXIT SIGNS AND EMERGENCY LIGHTING UNITS TO THE INDICATED CIRCUIT WITH A SEPARATE AND UN-SWITCHED CONDUCTOR BYPASSING ALL CONTROLS AND CONTACTORS. REFER TO MANUFACTURER'S WRITTEN INSTRUCTIONS FOR PROPER INSTALLATION AND TESTING.
- D. CONTRACTOR SHALL BE RESPONSIBLE FOR ENSURING THAT COORDINATION AND CONFLICT ISSUES BE RESOLVED PRIOR TO INSTALLATION OF LIGHT FIXTURES.
- E. ROUTE ALL EXPOSED, RIGID CONDUIT TIGHT TO STRUCTURE, PARALLEL TO BUILDING LINES AND IN UNISTRUT CABLE/PPIPE TRAY WHERE POSSIBLE. COORDINATE CONDUIT ROUTING AND INSTALLATION WITH OTHER TRADES PRIOR TO ROUGH-IN. SUPPORT CONDUIT FROM STRUCTURE NOT ROOF DECK. MAINTAIN 2" MIN SPACING FROM BOTTOM OF ROOF DECK TO PREVENT ROOFING SCREWS FROM PENETRATING CONDUITS.
- F. THROUGH WIRING OF RECESSED LIGHT FIXTURES, IN SUSPENDED CEILINGS, IS NOT PERMITTED. CONNECT EACH LIGHT FIXTURE BY A WHIP TO A JUNCTION BOX. PROVIDE CABLE WHIPS OF SUFFICIENT LENGTH TO ALLOW FOR RELOCATING EACH LIGHT FIXTURE WITHIN A 5-FOOT RADIUS OF ITS INSTALLED LOCATION, BUT NOT EXCEEDING 6 FEET IN UNSUPPORTED LENGTH.
- G. ALL INTERNALLY ILLUMINATED SIGNS SHALL BE PROVIDED WITH AN ACCESSIBLE DISCONNECTION MEANS. VERIFY EACH SIGN IS FURNISHED WITH AN INTEGRAL DISCONNECT SWITCH. PROVIDE WEATHERPROOF DISCONNECT SWITCHES WITHIN SIGHT OF ALL SIGNS AS REQUIRED. MAKE FINAL CONNECTION AS REQUIRED.

# KEYED PLAN NOTES

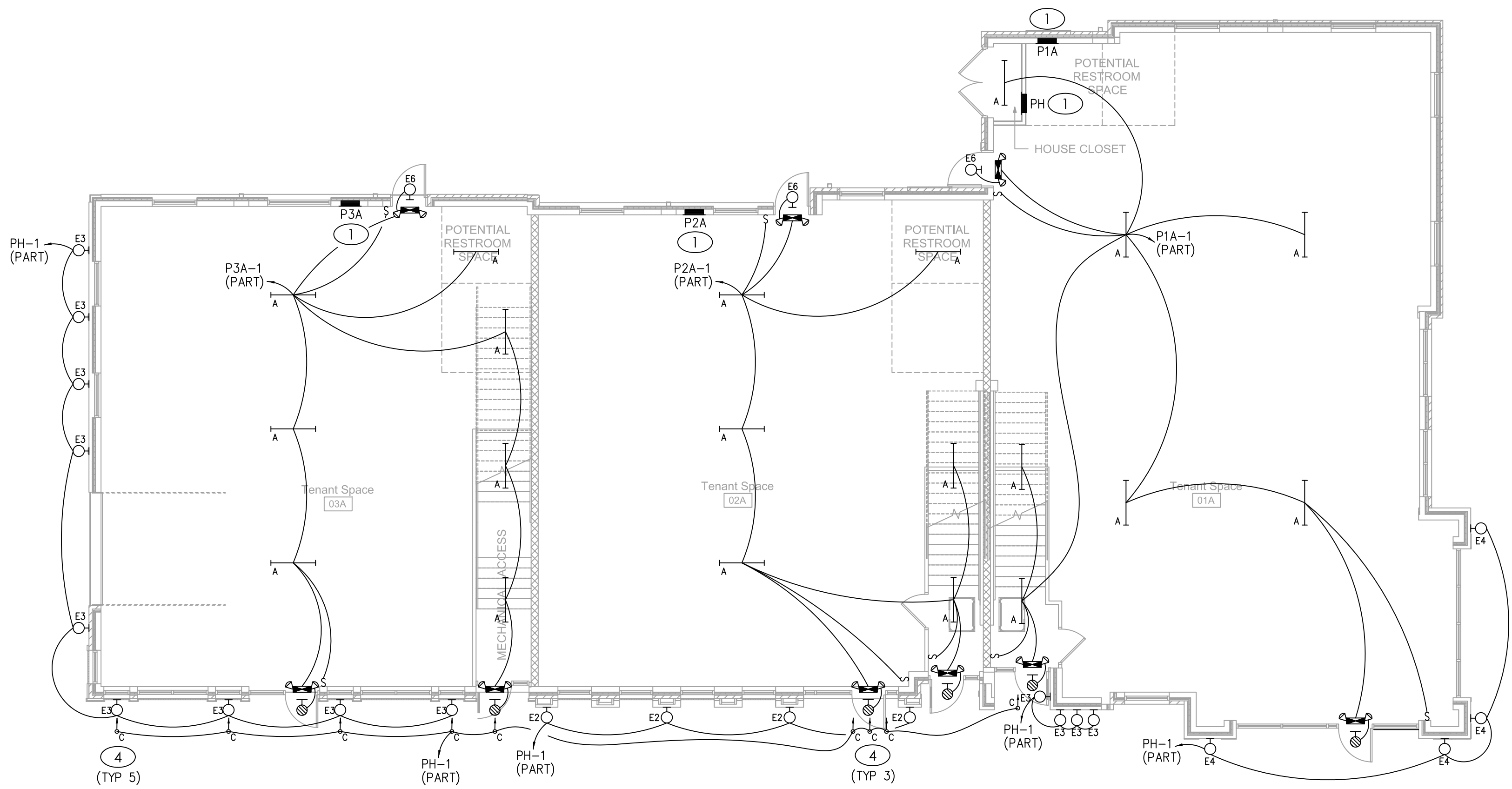
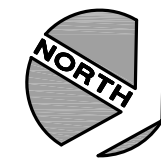
1. REFER TO SINGLE LINE DIAGRAM ON SHEET E-201 AND PANELBOARD SCHEDULES ON SHEET E-202 FOR MORE INFORMATION.
2. PHOTOCELL FOR CONTROL OF EXTERIOR LIGHTING FIXTURES. MOUNT PHOTOCELL TO TOP OF PARAPET AND POINT NORTH.
3. WET LOCATION LED TAPE LIGHT TO BE MOUNTED 45DEG CHANNEL ON EXTERIOR SIDE OF STRUCTURAL WINDOW FRAME. PROVIDE FIXTURES, DRIVERS/TRANSFORMERS, AND OTHER ACCESSORIES TO FILL LATERAL PORTION AT TOP OF WINDOW FRAME AND VERTICAL PORTIONS AT EACH SIDE OF WINDOW FRAME. PROVIDE INDIVIDUAL DRIVER/TRANSFORMER FOR EACH MANUFACTURER-RECOMMENDED STANDARD LENGTH OF FIXTURE. LOCATE DRIVERS ON INTERIOR SIDE OF WALL IN INCONSPICUOUS, ACCESSIBLE LOCATION. COORDINATE EXACT LOCATION OF DRIVER BANK AND MOUNTING WITH ARCHITECT PRIOR TO CONSTRUCTION. CONTROL VIA PHOTOCELL.
4. WET LOCATION LED DOWNLIGHT MOUNTED IN SOFFIT ABOVE. REFER TO ARCHITECTURAL DRAWINGS FOR EXACT LOCATION.



SECOND FLOOR LIGHTING PLAN

SCALE : 1/8" = 1'-0"

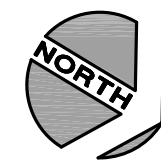
2



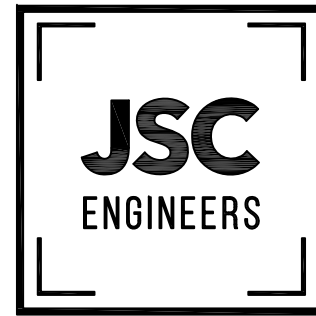
FIRST FLOOR LIGHTING PLAN

SCALE : 1/8" = 1'-0"

1



MEP ENGINEER:



MEP ENGINEER  
JSC ENGINEERS  
1001 180 BLUE PAVILION, SUITE 102, KANSAS CITY, MO 64105  
314.521.0700  
jane@jsc-engineers.com



REV ISSUE DATE