

**SCHLAGEL**  
 REVIEWED  
 REVIEWED AS NOTED  
 REVISE AND RESUBMIT  
 REJECTED  
 FOR INFORMATION ONLY

BY: mcginnis DATE: 4/23/2021

REV.	DATE	BY	DESCRIPTION

TOP SLAB REINFORCING	
#4 @ 6" O.C.E.W. WITH #4 DIAGONALS AROUND CASTING 1 1/2" CLEAR BOTTOM	
UNIT WEIGHTS	(LBS)
TOP SLAB	2,593
TOP SECTION	
MID SECTION 2	
MID SECTION 1	
BASE SECTION	8,533
BASE SLAB	4,741
TOTAL BASE WT	13,274

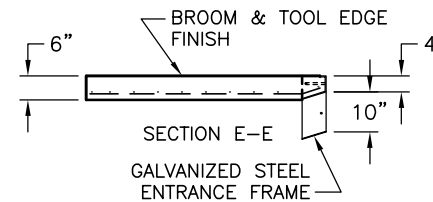
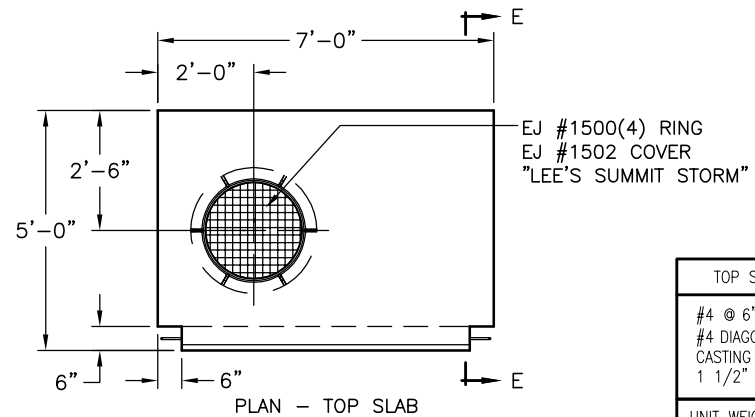
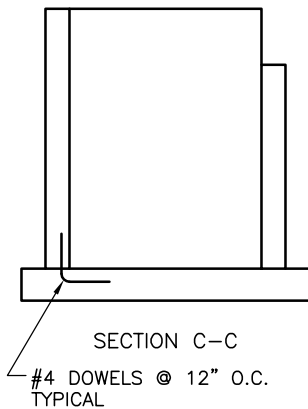
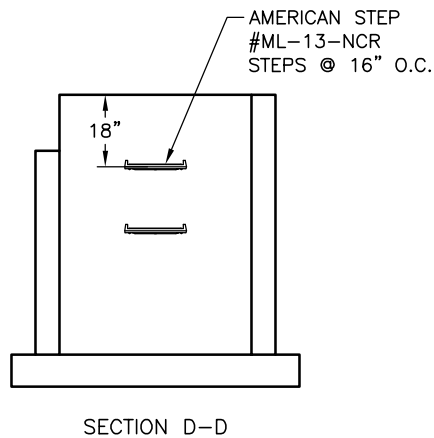
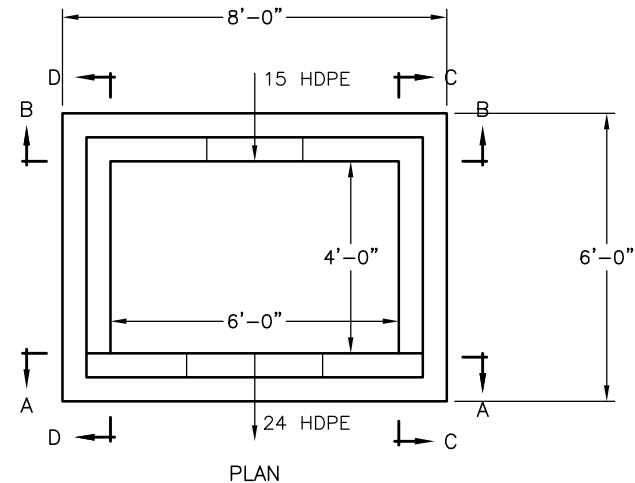
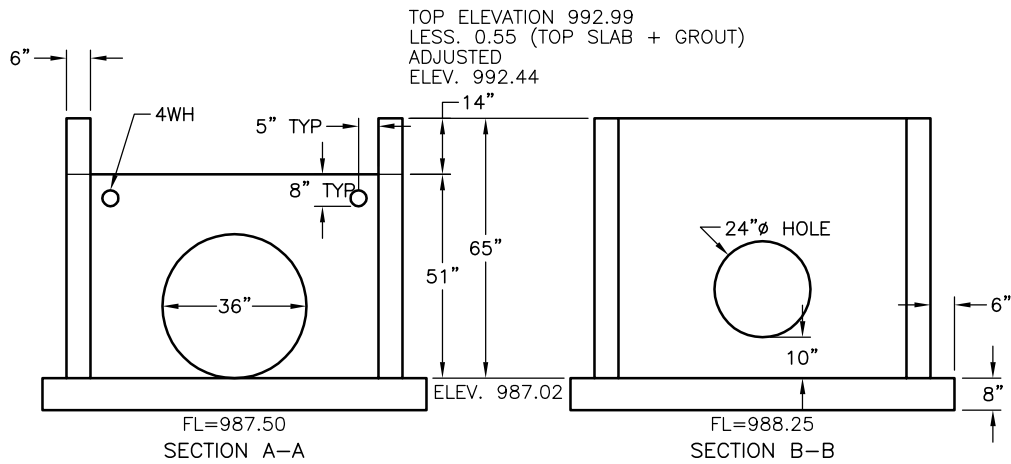
NOTES:  
 CEMENT TO BE PER ASTM C-150  
 REINFORCING TO BE PER ASTM A-615 GRADE 60  
 CONCRETE TO BE AIR ENTRAINED 4000 PSI @ 28 DAYS MINIMUM

**B BARBOUR CONCRETE COMPANY**  
 21421 E. TRUMAN ROAD INDEPENDENCE, MO 64056 (816) 796-3344 FAX (816) 796-3518

WALL REINFORCING: #4 @ 12" O.C.E.W.  
 BASE REINFORCING: #4 @ 6" O.C.E.W.

KAT EXCAVATION, INC.  
 WOODLAND GLEN 2nd PLAT  
 LEE'S SUMMIT, MISSOURI

STRUCTURE 101		DESCRIPTION CURB INLET		
DRAWN	DATE	SCALE	MIX DESIGN	BCWO NUMBER
MARK P	4/20/2021	NTS	4000 PSI	21-1099
CHECKED	DATE	INSPECTION	SHT 1 OF 1	
N/A	N/A	N/A		



TOP SLAB REINFORCING	
#4 @ 6" O.C.E.W. WITH #4 DIAGONALS AROUND CASTING 1 1/2" CLEAR BOTTOM	
UNIT WEIGHTS	(LBS)
TOP SLAB	2,593
TOP SECTION	
MID SECTION 2	
MID SECTION 1	
BASE SECTION	7,466
BASE SLAB	4,741
TOTAL BASE WT	12,207

NOTES:  
CEMENT TO BE PER ASTM C-150  
REINFORCING TO BE PER ASTM A-615 GRADE 60  
CONCRETE TO BE AIR ENTRAINED 4000 PSI @ 28 DAYS MINIMUM

**B BARBOUR CONCRETE COMPANY**  
21421 E. TRUMAN ROAD INDEPENDENCE, MO 64056 (816) 796-3344 FAX (816) 796-3518

WALL REINFORCING: #4 @ 12" O.C.E.W.	BASE REINFORCING: #4 @ 6" O.C.E.W.
--	---------------------------------------

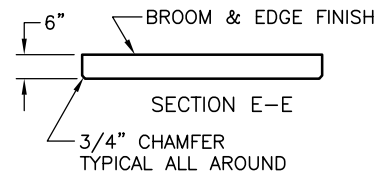
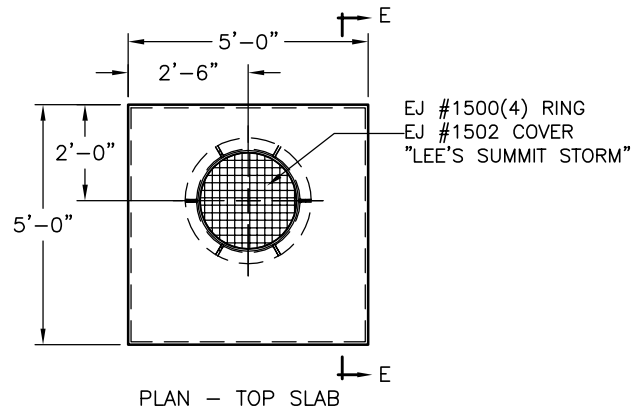
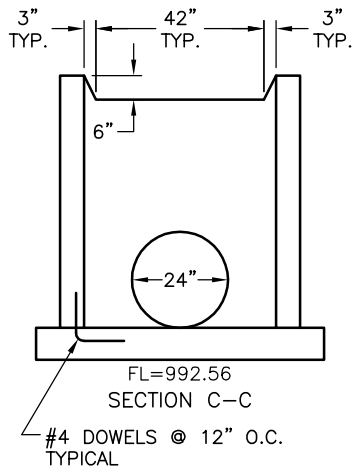
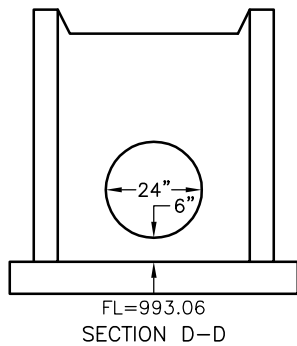
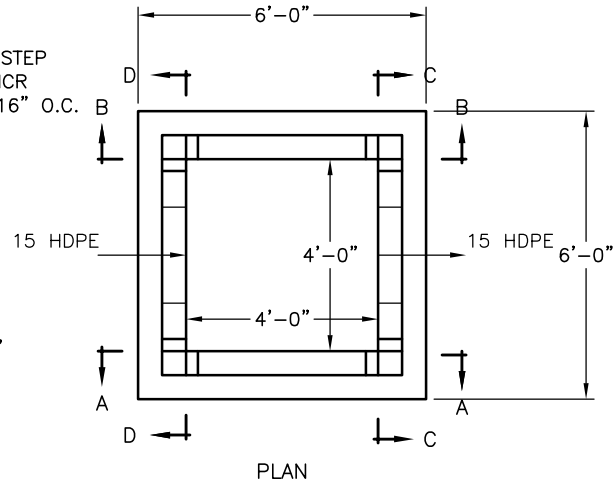
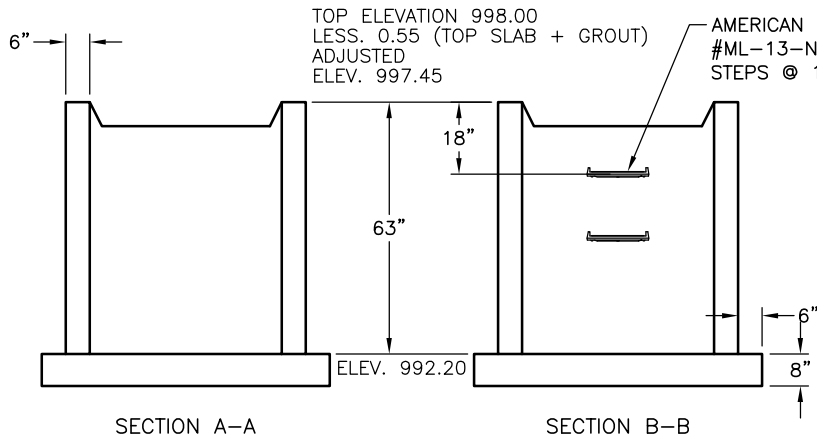
KAT EXCAVATION, INC.  
WOODLAND GLEN 2nd PLAT  
LEE'S SUMMIT, MISSOURI

STRUCTURE 102		DESCRIPTION CURB INLET		
DRAWN MARK P	DATE 4/20/2021	SCALE NTS	MIX DESIGN 4000 PSI	BCWO NUMBER
CHECKED N/A	DATE N/A	INSPECTION N/A	SHT 1 OF 1	21-1099

PLOT DATE: 4/20/2021

REV.	DATE	BY	DESCRIPTION





REVISIONS

REV.	DATE	BY	DESCRIPTION

TOP SLAB REINFORCING	
#5 @ 6" O.C.E.W. WITH #5 DIAGONALS AROUND CASTING 1 1/2" CLEAR BOTTOM	
UNIT WEIGHTS	(LBS)
TOP SLAB	1,852
TOP SECTION	
MID SECTION 2	
MID SECTION 1	
BASE SECTION	5,942
BASE SLAB	3,556
TOTAL BASE WT	9,498

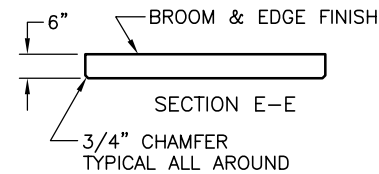
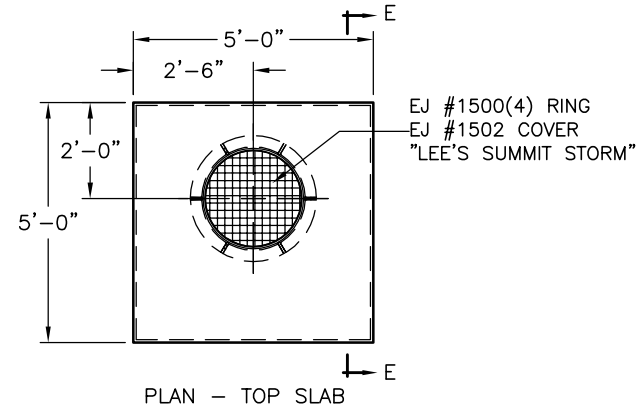
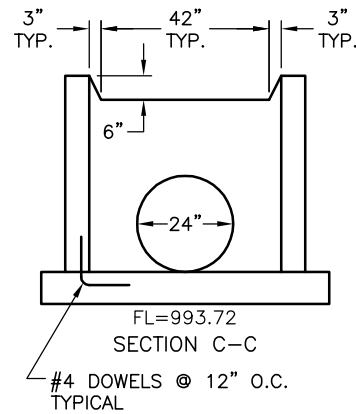
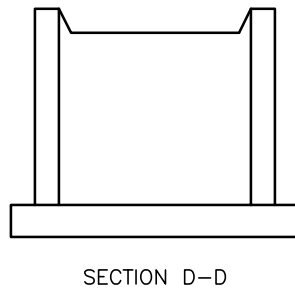
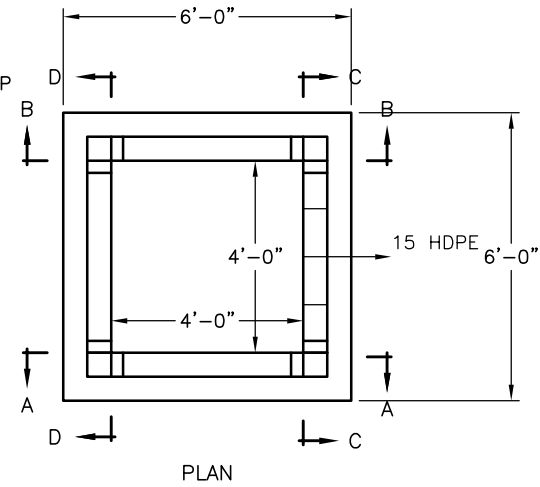
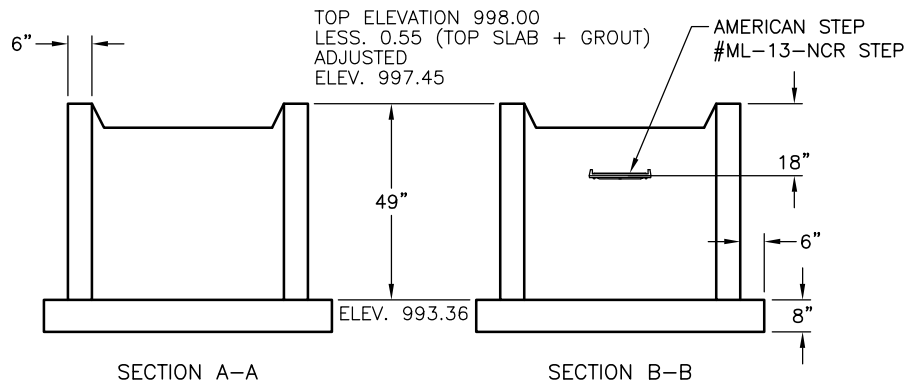
NOTES:  
 CEMENT TO BE PER ASTM C-150  
 REINFORCING TO BE PER ASTM A-615 GRADE 60  
 CONCRETE TO BE AIR ENTRAINED 4000 PSI @ 28 DAYS MINIMUM

**B BARBOUR CONCRETE COMPANY**  
 21421 E. TRUMAN ROAD (816) 796-3344  
 INDEPENDENCE, MO 64056 FAX (816) 796-3518

WALL REINFORCING: #4 @ 12" O.C.E.W.  
 BASE REINFORCING: #4 @ 6" O.C.E.W.

KAT EXCAVATION, INC.  
 WOODLAND GLEN 2nd PLAT  
 LEE'S SUMMIT, MISSOURI

STRUCTURE		DESCRIPTION		
104		AREA INLET		
DRAWN	DATE	SCALE	MIX DESIGN	BCWO NUMBER
MARK P	4/20/2021	NTS	4000 PSI	21-1099
CHECKED	DATE	INSPECTION	SHT 1 OF 1	
N/A	N/A	N/A		



REVISIONS	
REV.	DESCRIPTION

TOP SLAB REINFORCING	
#5 @ 6" O.C.E.W. WITH #5 DIAGONALS AROUND CASTING 1 1/2" CLEAR BOTTOM	
UNIT WEIGHTS	(LBS)
TOP SLAB	1,852
TOP SECTION	
MID SECTION 2	
MID SECTION 1	
BASE SECTION	4,619
BASE SLAB	3,556
TOTAL BASE WT	8,175

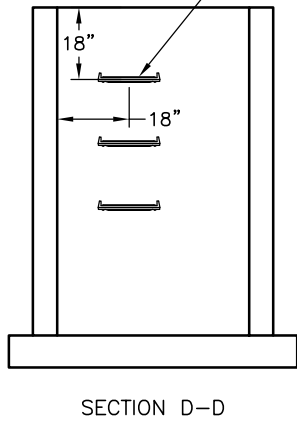
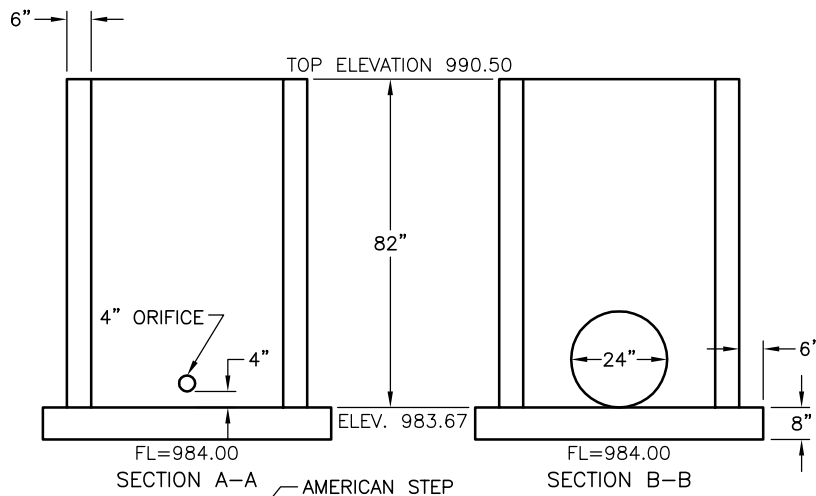
NOTES:  
 CEMENT TO BE PER ASTM C-150  
 REINFORCING TO BE PER ASTM A-615 GRADE 60  
 CONCRETE TO BE AIR ENTRAINED 4000 PSI @ 28 DAYS MINIMUM

**B BARBOUR CONCRETE COMPANY**  
 21421 E. TRUMAN ROAD (816) 796-3344  
 INDEPENDENCE, MO 64056 FAX (816) 796-3518

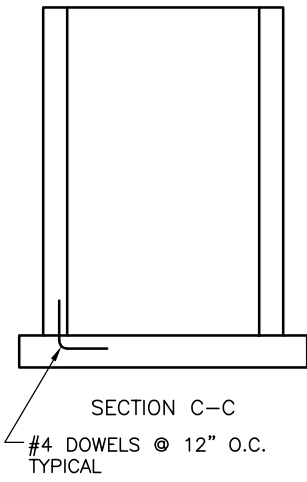
WALL REINFORCING: #4 @ 12" O.C.E.W.	BASE REINFORCING: #4 @ 6" O.C.E.W.
--	---------------------------------------

KAT EXCAVATION, INC.  
 WOODLAND GLEN 2nd PLAT  
 LEE'S SUMMIT, MISSOURI

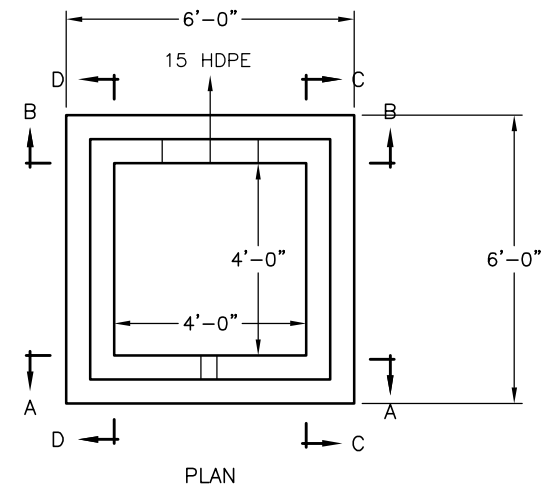
STRUCTURE 105		DESCRIPTION AREA INLET		
DRAWN MARK P	DATE 4/20/2021	SCALE NTS	MIX DESIGN 4000 PSI	BCWO NUMBER
CHECKED N/A	DATE N/A	INSPECTION N/A	SHT 1 OF 1	21-1099



AMERICAN STEP  
#ML-13-NCR  
STEPS @ 16" O.C.



#4 DOWELS @ 12" O.C.  
TYPICAL



SHIP WITH THIS BOX:  
1-48" X 48" ID TRASH RACK

PLEASE NOTE: THE BMP SOLUTIONS PRODUCTS  
ARE SUPPLIED AND INSTALLED BY CONTRACTOR

REVISIONS		DESCRIPTION
REV.	DATE	BY

UNIT WEIGHTS	(LBS)
TOP SECTION	
MID SECTION 2	
MID SECTION 1	
BASE SECTION	8,872
BASE SLAB	3,556
TOTAL BASE WT	12,427

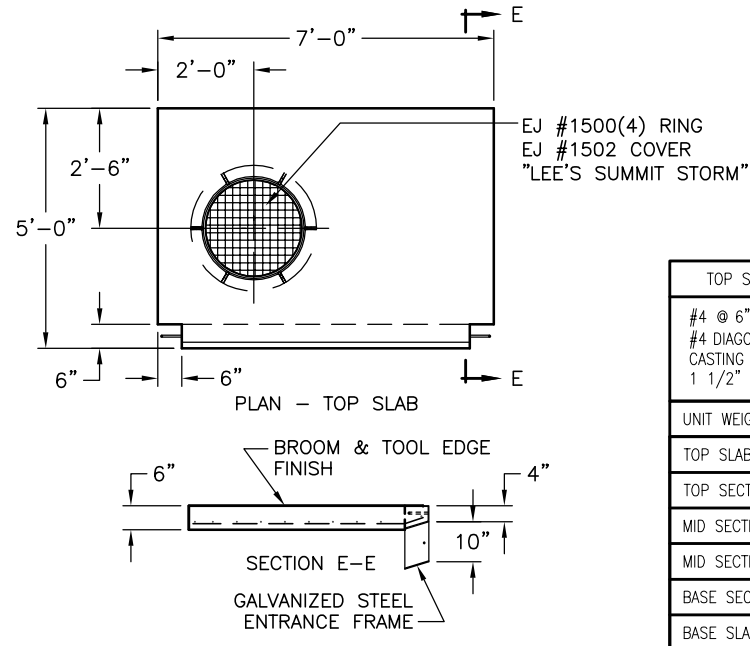
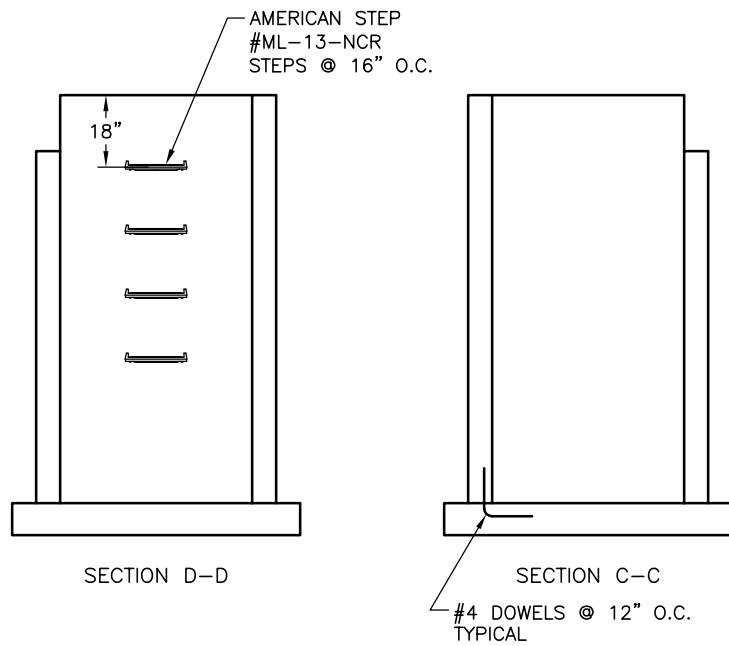
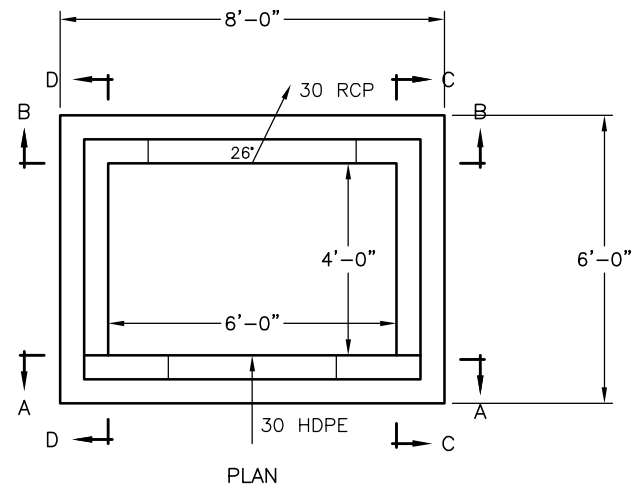
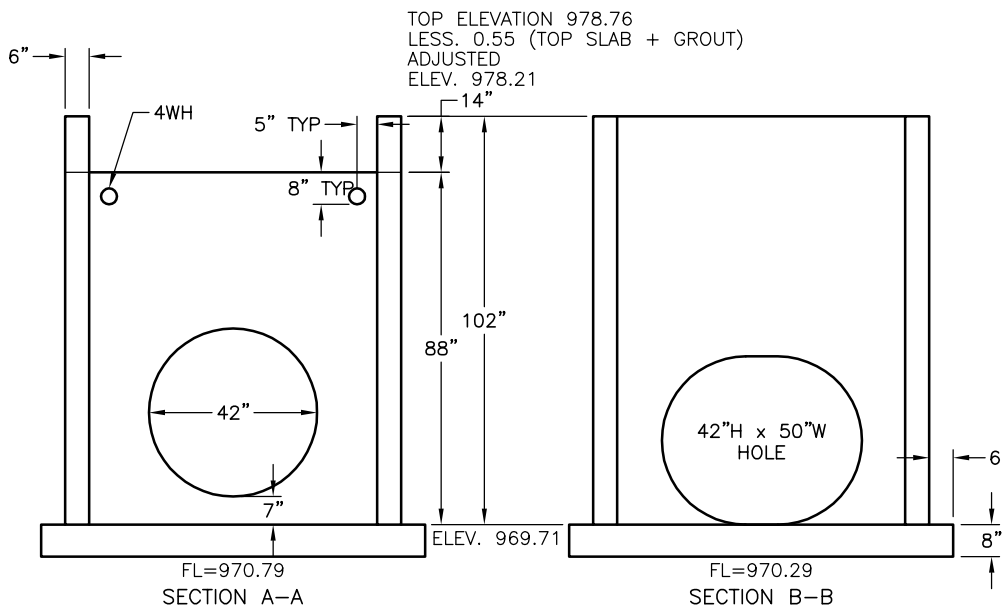
NOTES:  
CEMENT TO BE PER ASTM C-150  
REINFORCING TO BE PER ASTM A-615 GRADE 60  
CONCRETE TO BE AIR ENTRAINED 4000 PSI @ 28 DAYS MINIMUM

**B BARBOUR CONCRETE COMPANY**  
21421 E. TRUMAN ROAD INDEPENDENCE, MO 64056 (816) 796-3344 FAX (816) 796-3518

WALL REINFORCING: #4 @ 12" O.C.E.W.	BASE REINFORCING: #4 @ 6" O.C.E.W.
--	---------------------------------------

KAT EXCAVATION, INC.  
WOODLAND GLEN 2nd PLAT  
LEE'S SUMMIT, MISSOURI

STRUCTURE 201		DESCRIPTION OUTLET STRUCTURE		
DRAWN MARK P	DATE 4/20/2021	SCALE NTS	MIX DESIGN 4000 PSI	BCWO NUMBER
CHECKED N/A	DATE N/A	INSPECTION N/A	SHT 1 OF 1	21-1099



TOP SLAB REINFORCING	
#4 @ 6" O.C.E.W. WITH #4 DIAGONALS AROUND CASTING 1 1/2" CLEAR BOTTOM	
UNIT WEIGHTS	(LBS)
TOP SLAB	2,593
TOP SECTION	
MID SECTION 2	
MID SECTION 1	
BASE SECTION	11,649
BASE SLAB	4,741
TOTAL BASE WT	16,389

NOTES:  
CEMENT TO BE PER ASTM C-150  
REINFORCING TO BE PER ASTM A-615 GRADE 60  
CONCRETE TO BE AIR ENTRAINED 4000 PSI @ 28 DAYS MINIMUM

**B BARBOUR CONCRETE COMPANY**  
21421 E. TRUMAN ROAD INDEPENDENCE, MO 64056 (816) 796-3344 FAX (816) 796-3518

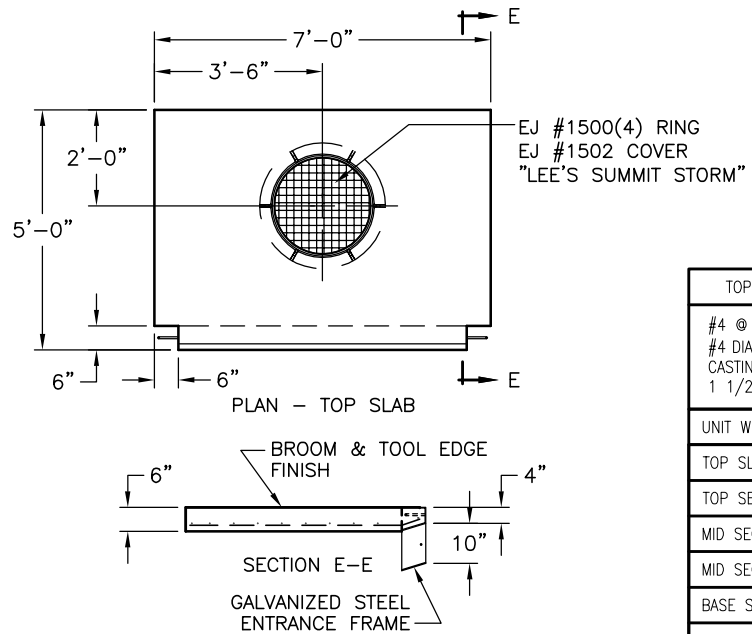
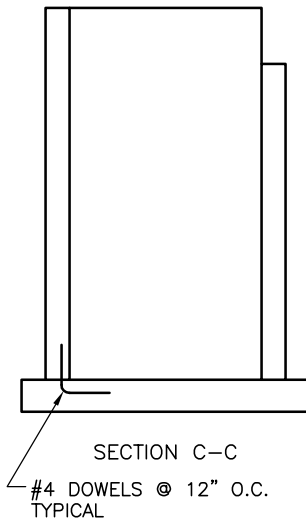
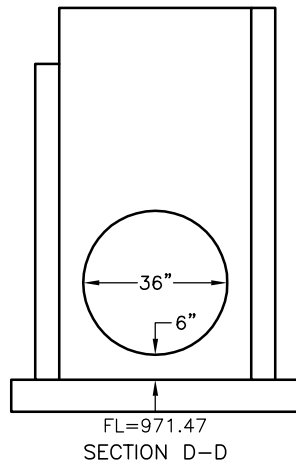
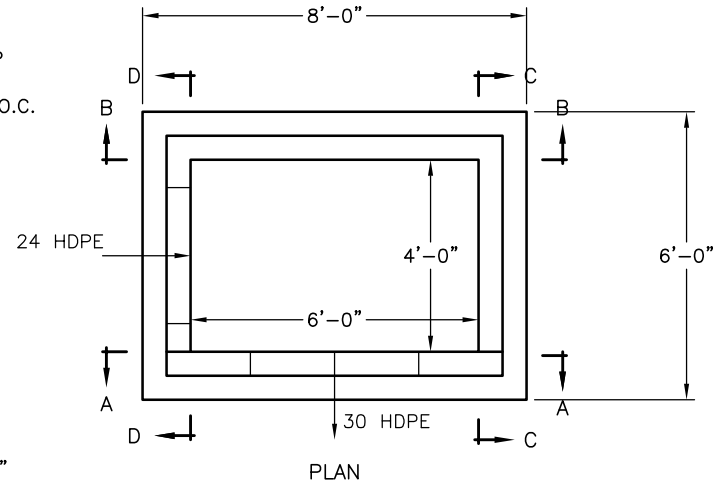
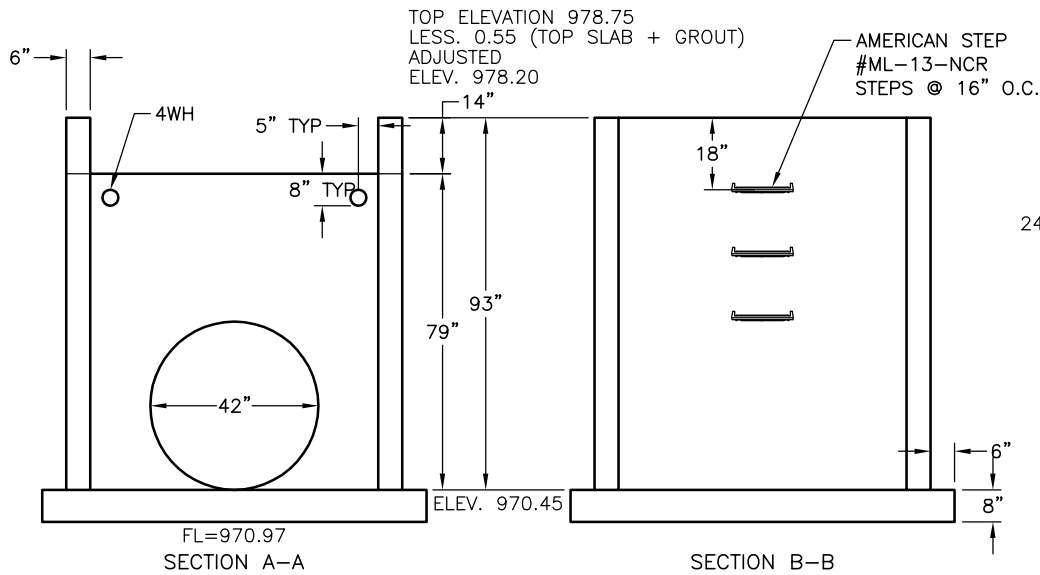
WALL REINFORCING: #5 @ 12" O.C. VERT. #5 @ 6" O.C. HORIZ.	BASE REINFORCING: #5 @ 6" O.C.E.W.
---	---------------------------------------

KAT EXCAVATION, INC.  
WOODLAND GLEN 2nd PLAT  
LEE'S SUMMIT, MISSOURI

STRUCTURE 301		DESCRIPTION CURB INLET		
DRAWN MARK P	DATE 4/20/2021	SCALE NTS	MIX DESIGN 4000 PSI	BCWO NUMBER
CHECKED N/A	DATE N/A	INSPECTION N/A	SHT 1 OF 1	21-1099

REV.	DATE	BY	DESCRIPTION

T:\21-1099 KAT - WOODLAND GLEN 2ND PLAT STORM\21-1099 KAT.DWG



TOP SLAB REINFORCING	
#4 @ 6" O.C.E.W. WITH #4 DIAGONALS AROUND CASTING 1 1/2" CLEAR BOTTOM	
UNIT WEIGHTS	(LBS)
TOP SLAB	2,593
TOP SECTION	
MID SECTION 2	
MID SECTION 1	
BASE SECTION	10,788
BASE SLAB	4,741
TOTAL BASE WT	15,529

REVISIONS

REV.	DATE	BY	DESCRIPTION

T:\21-1099 KAT - WOODLAND GLEN 2ND PLAT STORM\21-1099 KAT.DWG

NOTES:  
CEMENT TO BE PER ASTM C-150  
REINFORCING TO BE PER ASTM A-615 GRADE 60  
CONCRETE TO BE AIR ENTRAINED 4000 PSI @ 28 DAYS MINIMUM

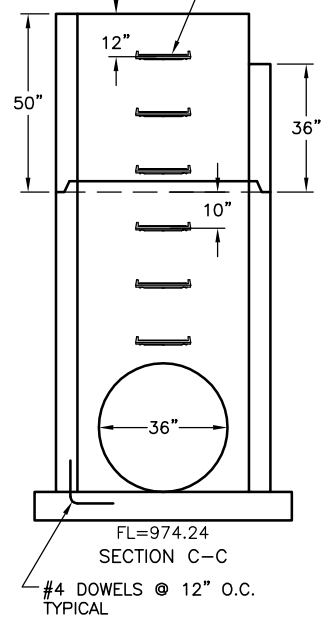
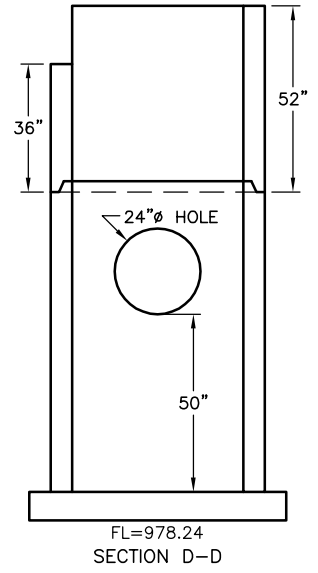
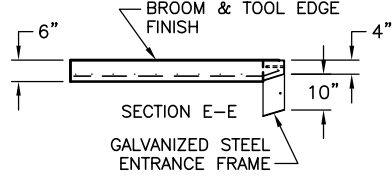
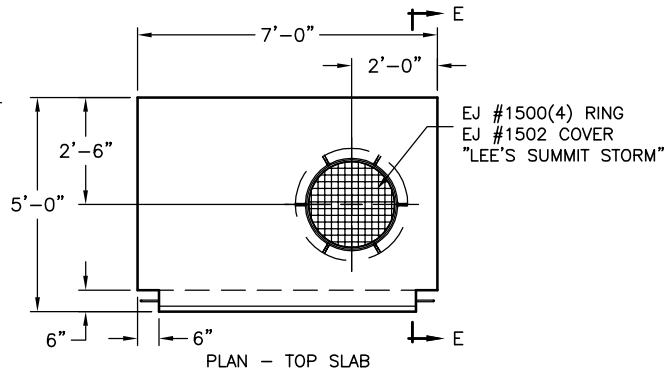
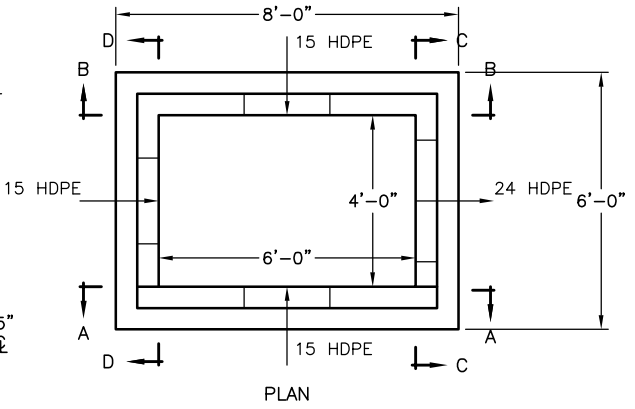
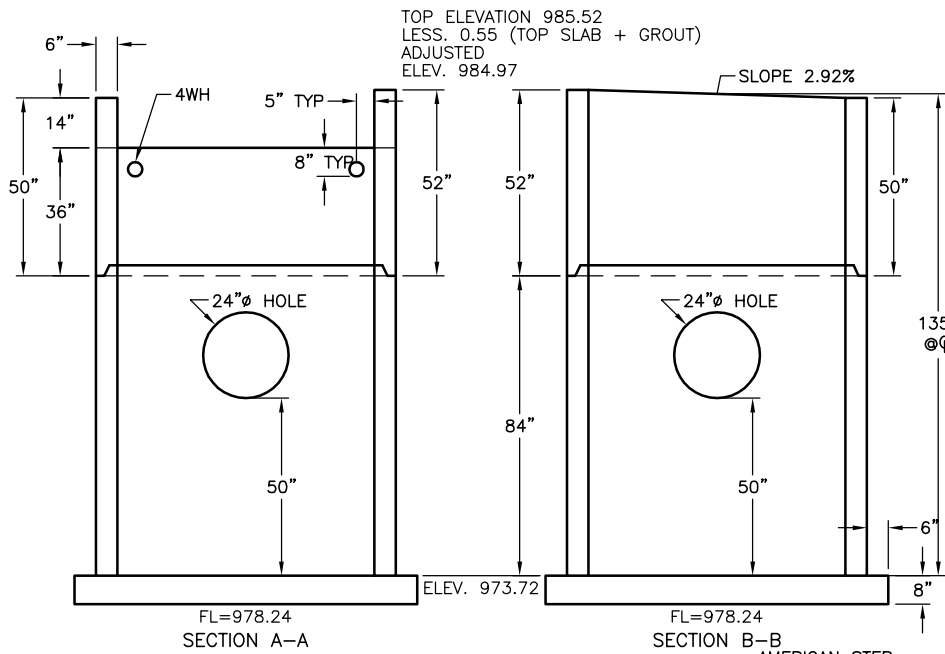
**B BARBOUR CONCRETE COMPANY**  
21421 E. TRUMAN ROAD INDEPENDENCE, MO 64056 (816) 796-3344 FAX (816) 796-3518

WALL REINFORCING: #5 @ 12" O.C. VERT. #5 @ 6" O.C. HORIZ.	BASE REINFORCING: #5 @ 6" O.C.E.W.
---	---------------------------------------

KAT EXCAVATION, INC.  
WOODLAND GLEN 2nd PLAT  
LEE'S SUMMIT, MISSOURI

STRUCTURE 302		DESCRIPTION CURB INLET		
DRAWN MARK P	DATE 4/20/2021	SCALE NTS	MIX DESIGN 4000 PSI	BCWO NUMBER
CHECKED N/A	DATE N/A	INSPECTION N/A	SHT 1 OF 1	21-1099





REVISIONS	
REV.	DESCRIPTION

TOP SLAB REINFORCING	
#4 @ 6" O.C.E.W. WITH #4 DIAGONALS AROUND CASTING 1 1/2" CLEAR BOTTOM	
UNIT WEIGHTS	(LBS)
TOP SLAB	2,593
TOP SECTION	6,321
MID SECTION 2	
MID SECTION 1	
BASE SECTION	10,186
BASE SLAB	4,741
TOTAL BASE WT	14,926

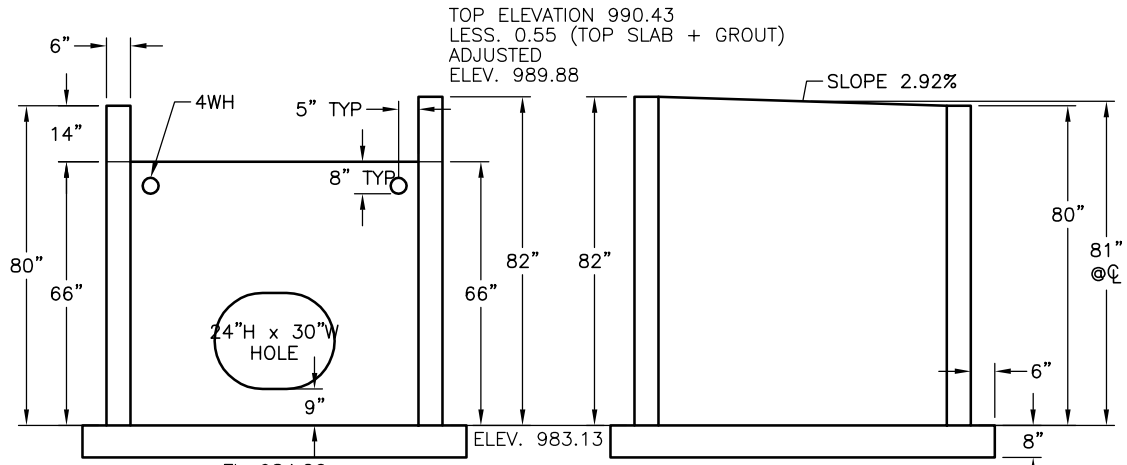
NOTES:  
CEMENT TO BE PER ASTM C-150  
REINFORCING TO BE PER ASTM A-615 GRADE 60  
CONCRETE TO BE AIR ENTRAINED 4000 PSI @ 28 DAYS MINIMUM

**B BARBOUR CONCRETE COMPANY**  
21421 E. TRUMAN ROAD INDEPENDENCE, MO 64056 (816) 796-3344 FAX (816) 796-3518

WALL REINFORCING: #5 @ 12" O.C. VERT. #5 @ 6" O.C. HORIZ.	BASE REINFORCING: #5 @ 6" O.C.E.W.
---	---------------------------------------

KAT EXCAVATION, INC.  
WOODLAND GLEN 2nd PLAT  
LEE'S SUMMIT, MISSOURI

STRUCTURE 303		DESCRIPTION CURB INLET		
DRAWN	DATE	SCALE	MIX DESIGN	BCWO NUMBER
MARK P	4/20/2021	NTS	4000 PSI	21-1099
CHECKED	DATE	INSPECTION	SHT 1 OF 1	
N/A	N/A	N/A		



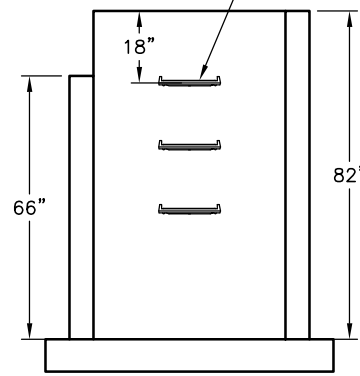
TOP ELEVATION 990.43  
 LESS. 0.55 (TOP SLAB + GROUT)  
 ADJUSTED  
 ELEV. 989.88

SLOPE 2.92%

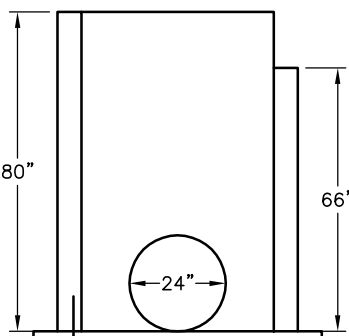
FL=984.26  
 SECTION A-A

AMERICAN STEP  
 #ML-13-NCR  
 STEPS @ 16" O.C.

SECTION B-B

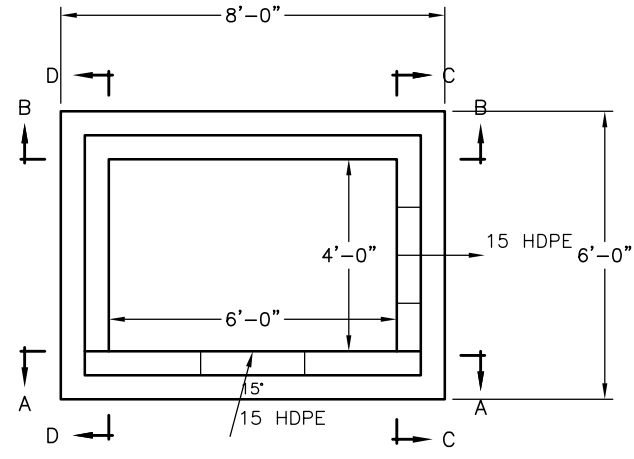


SECTION D-D

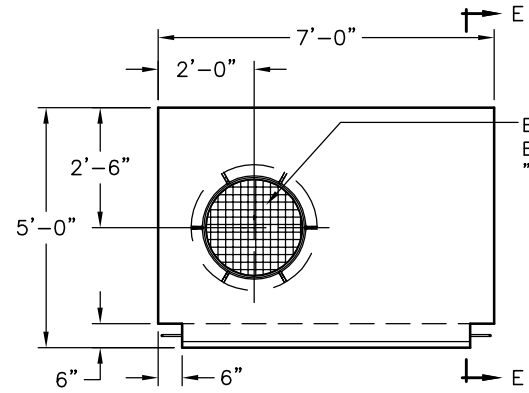


FL=983.47  
 SECTION C-C

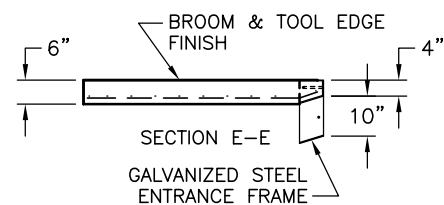
#4 DOWELS @ 12" O.C.  
 TYPICAL



PLAN



PLAN - TOP SLAB



SECTION E-E  
 GALVANIZED STEEL  
 ENTRANCE FRAME

EJ #1500(4) RING  
 EJ #1502 COVER  
 "LEE'S SUMMIT STORM"

TOP SLAB REINFORCING	
#4 @ 6" O.C.E.W. WITH #4 DIAGONALS AROUND CASTING 1 1/2" CLEAR BOTTOM	
UNIT WEIGHTS	(LBS)
TOP SLAB	2,593
TOP SECTION	
MID SECTION 2	
MID SECTION 1	
BASE SECTION	9,868
BASE SLAB	4,741
TOTAL BASE WT	14,609

REVISIONS	
REV.	DESCRIPTION

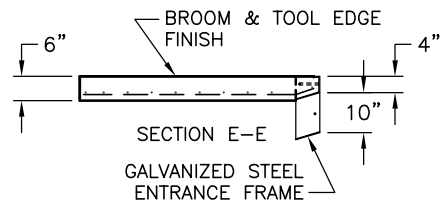
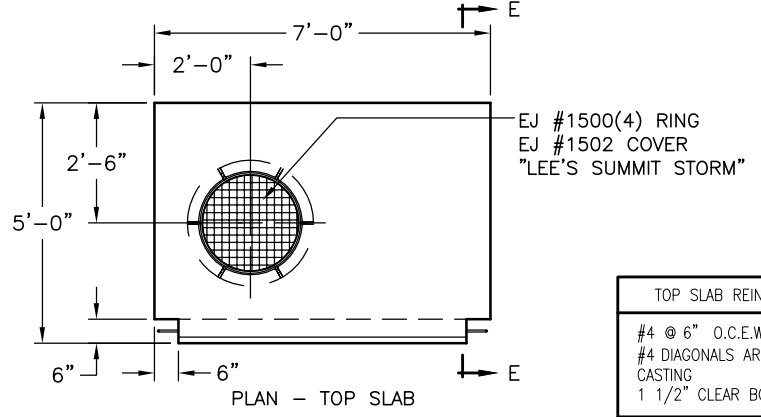
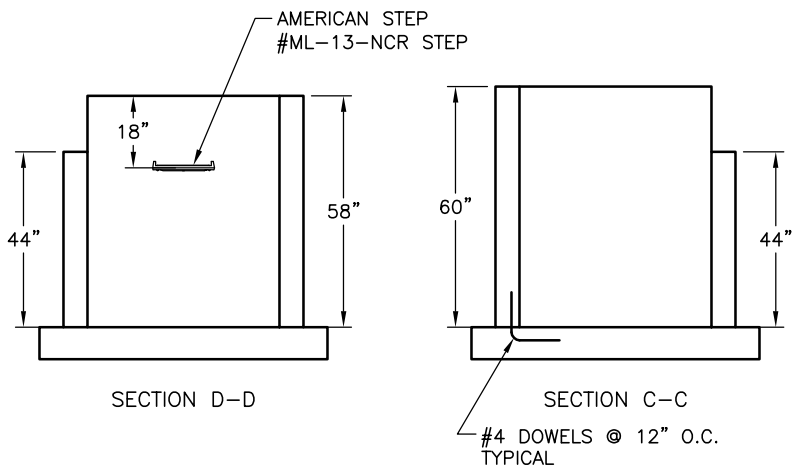
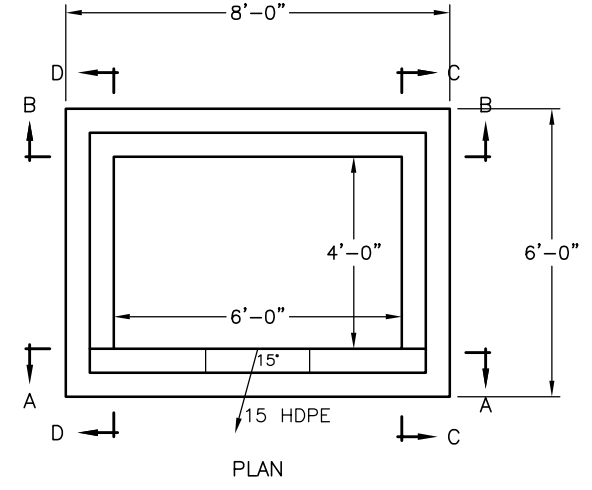
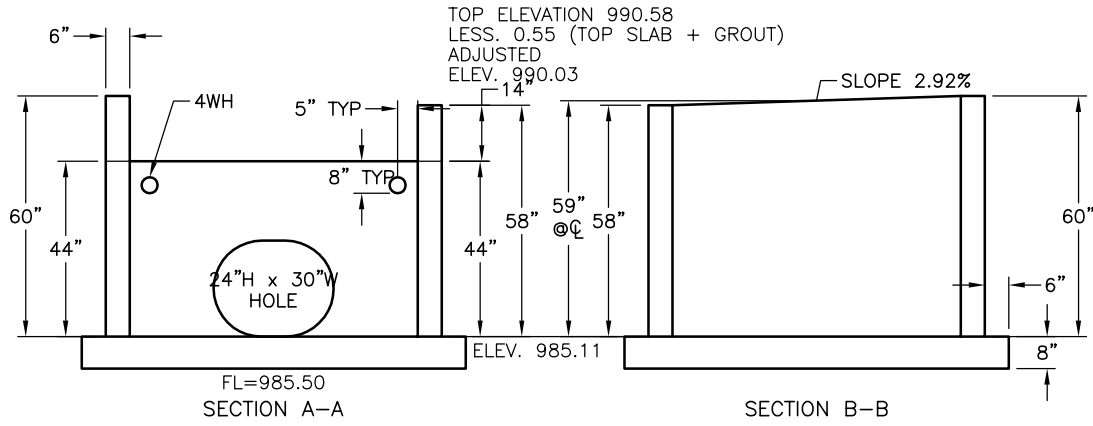
NOTES:  
 CEMENT TO BE PER ASTM C-150  
 REINFORCING TO BE PER ASTM A-615 GRADE 60  
 CONCRETE TO BE AIR ENTRAINED 4000 PSI @ 28 DAYS MINIMUM

**B BARBOUR CONCRETE COMPANY**  
 21421 E. TRUMAN ROAD INDEPENDENCE, MO 64056 (816) 796-3344 FAX (816) 796-3518

WALL REINFORCING: #5 @ 12" O.C.E.W.	BASE REINFORCING: #5 @ 6" O.C.E.W.
--	---------------------------------------

KAT EXCAVATION, INC.  
 WOODLAND GLEN 2nd PLAT  
 LEE'S SUMMIT, MISSOURI

STRUCTURE 304		DESCRIPTION CURB INLET		
DRAWN MARK P	DATE 4/20/2021	SCALE NTS	MIX DESIGN 4000 PSI	BCWO NUMBER
CHECKED N/A	DATE N/A	INSPECTION N/A	SHT 1 OF 1	21-1099



TOP SLAB REINFORCING	
#4 @ 6" O.C.E.W. WITH #4 DIAGONALS AROUND CASTING 1 1/2" CLEAR BOTTOM	
UNIT WEIGHTS	(LBS)
TOP SLAB	2,593
TOP SECTION	
MID SECTION 2	
MID SECTION 1	
BASE SECTION	7,113
BASE SLAB	4,741
TOTAL BASE WT	11,854

NOTES:  
 CEMENT TO BE PER ASTM C-150  
 REINFORCING TO BE PER ASTM A-615 GRADE 60  
 CONCRETE TO BE AIR ENTRAINED 4000 PSI @ 28 DAYS MINIMUM

**B BARBOUR CONCRETE COMPANY**  
 21421 E. TRUMAN ROAD INDEPENDENCE, MO 64056 (816) 796-3344 FAX (816) 796-3518

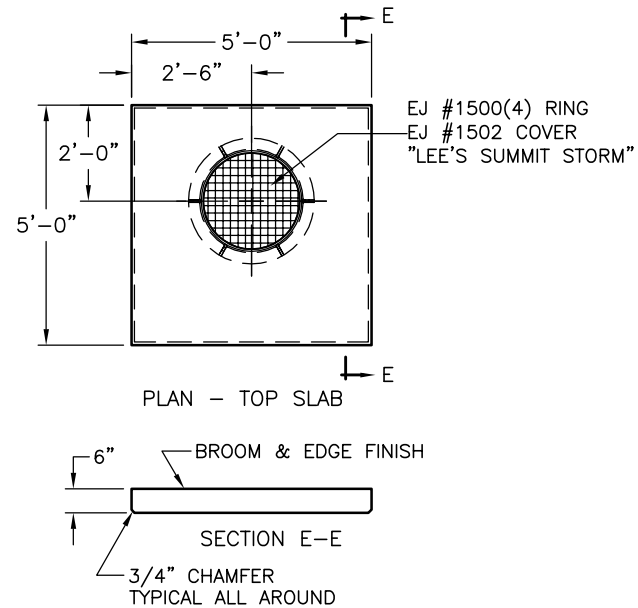
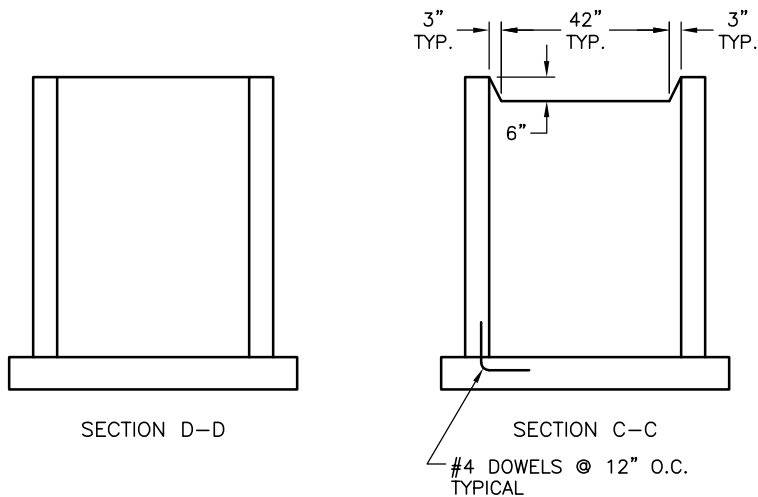
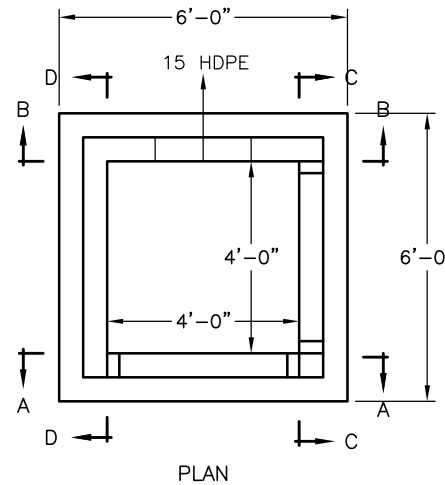
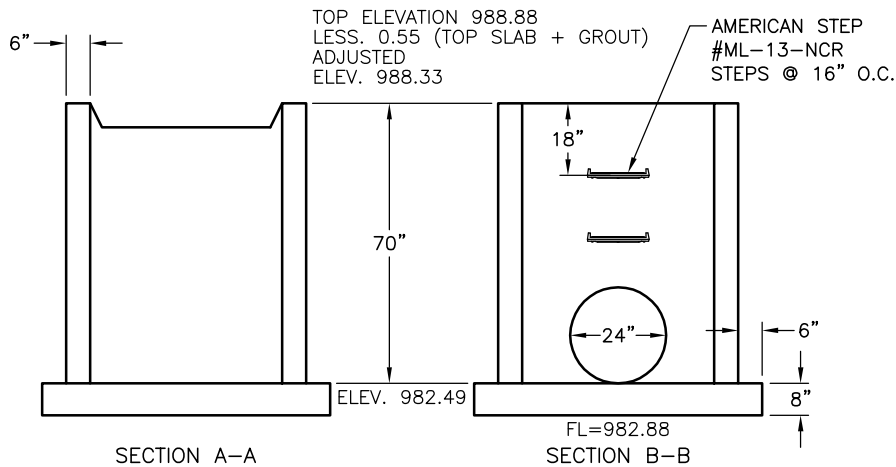
WALL REINFORCING: #4 @ 12" O.C.E.W.	BASE REINFORCING: #4 @ 6" O.C.E.W.
--	---------------------------------------

KAT EXCAVATION, INC.  
 WOODLAND GLEN 2nd PLAT  
 LEE'S SUMMIT, MISSOURI

STRUCTURE		DESCRIPTION		
305		CURB INLET		
DRAWN	DATE	SCALE	MIX DESIGN	BCWO NUMBER
MARK P	4/20/2021	NTS	4000 PSI	21-1099
CHECKED	DATE	INSPECTION	SHT 1 OF 1	
N/A	N/A	N/A		

REV.	DATE	BY	DESCRIPTION

T:\21-1099 KAT - WOODLAND GLEN 2ND PLAT STORM\21-1099 KAT.DWG



TOP SLAB REINFORCING	
#5 @ 6" O.C.E.W. WITH #5 DIAGONALS AROUND CASTING 1 1/2" CLEAR BOTTOM	
UNIT WEIGHTS	(LBS)
TOP SLAB	1,852
TOP SECTION	
MID SECTION 2	
MID SECTION 1	
BASE SECTION	7,249
BASE SLAB	3,556
TOTAL BASE WT	10,804

REVISIONS	
REV.	DESCRIPTION

T:\21-1099-KAT - WOODLAND GLEN 2ND PLAT STORM\21-1099 KAT.DWG

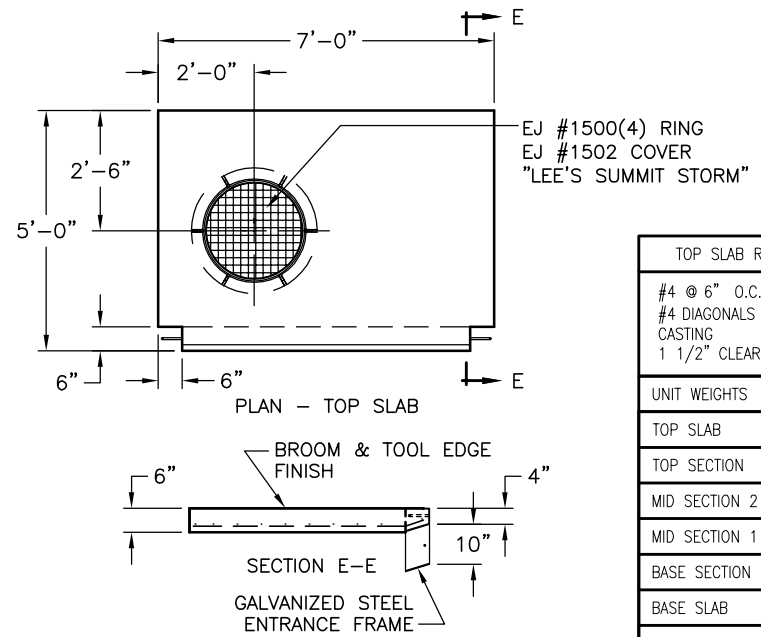
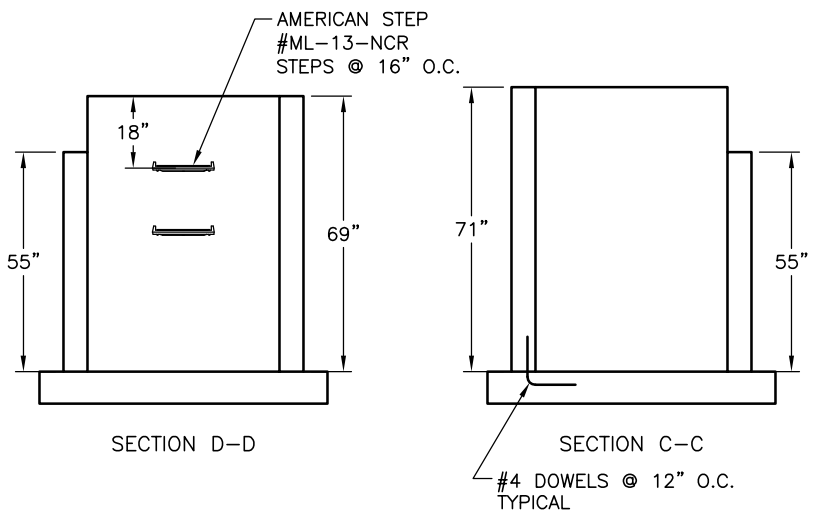
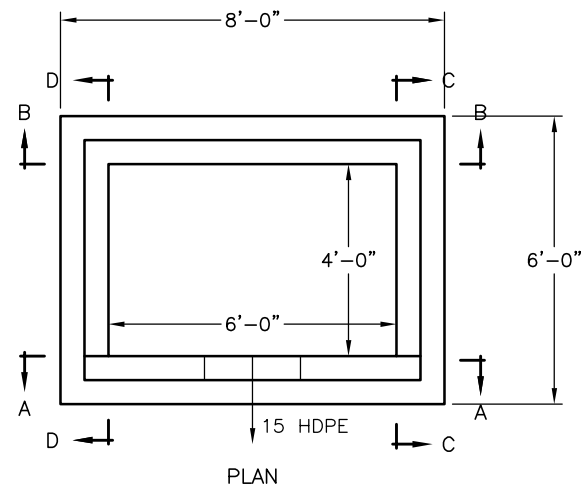
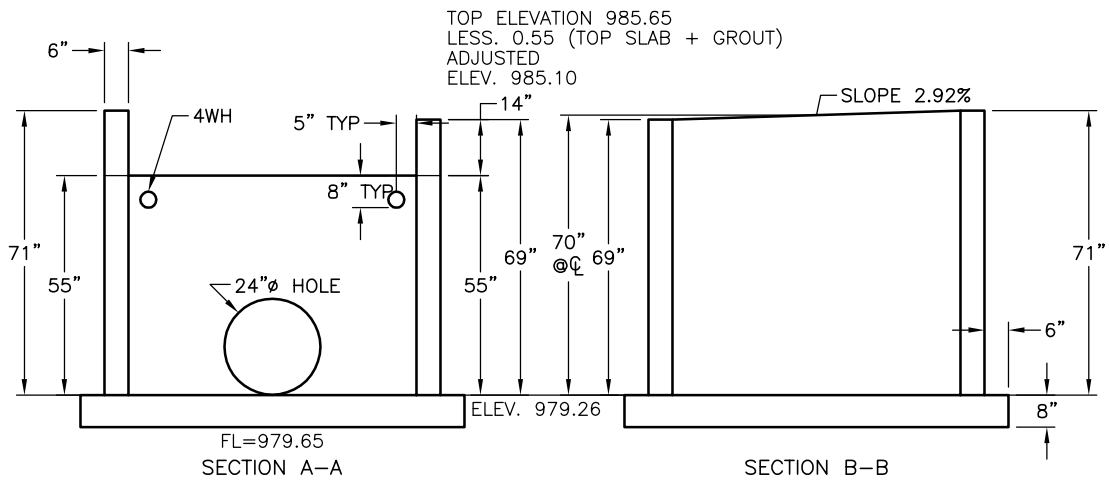
NOTES:  
 CEMENT TO BE PER ASTM C-150  
 REINFORCING TO BE PER ASTM A-615 GRADE 60  
 CONCRETE TO BE AIR ENTRAINED 4000 PSI @ 28 DAYS MINIMUM

**B BARBOUR CONCRETE COMPANY**  
 21421 E. TRUMAN ROAD INDEPENDENCE, MO 64056 (816) 796-3344 FAX (816) 796-3518

WALL REINFORCING: #4 @ 12" O.C.E.W.	BASE REINFORCING: #4 @ 6" O.C.E.W.
--	---------------------------------------

KAT EXCAVATION, INC.  
 WOODLAND GLEN 2nd PLAT  
 LEE'S SUMMIT, MISSOURI

STRUCTURE 401		DESCRIPTION AREA INLET		
DRAWN MARK P	DATE 4/20/2021	SCALE NTS	MIX DESIGN 4000 PSI	BCWO NUMBER
CHECKED N/A	DATE N/A	INSPECTION N/A	SHT 1 OF 1	21-1099



TOP SLAB REINFORCING	
#4 @ 6" O.C.E.W. WITH #4 DIAGONALS AROUND CASTING 1 1/2" CLEAR BOTTOM	
UNIT WEIGHTS	(LBS)
TOP SLAB	2,593
TOP SECTION	
MID SECTION 2	
MID SECTION 1	
BASE SECTION	8,669
BASE SLAB	4,741
TOTAL BASE WT	13,410

REVISIONS	
REV.	DESCRIPTION

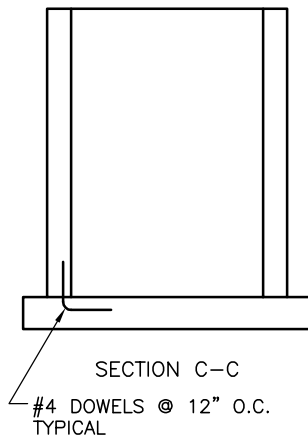
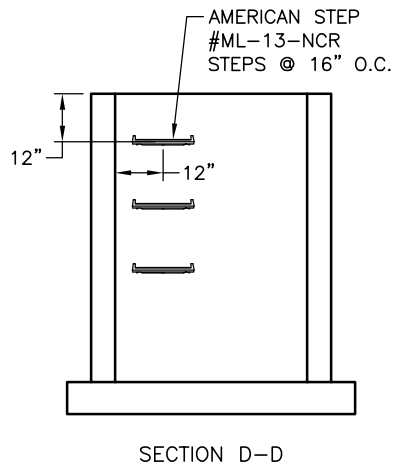
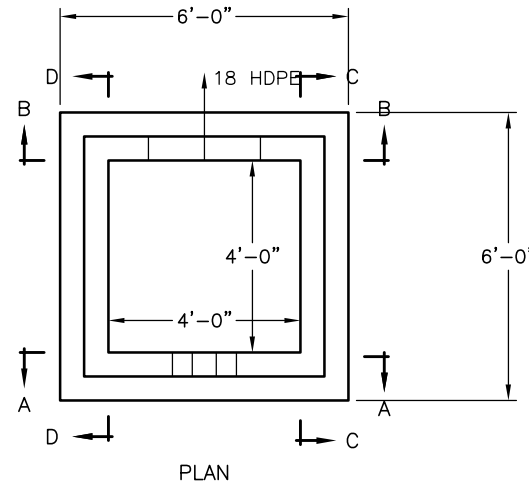
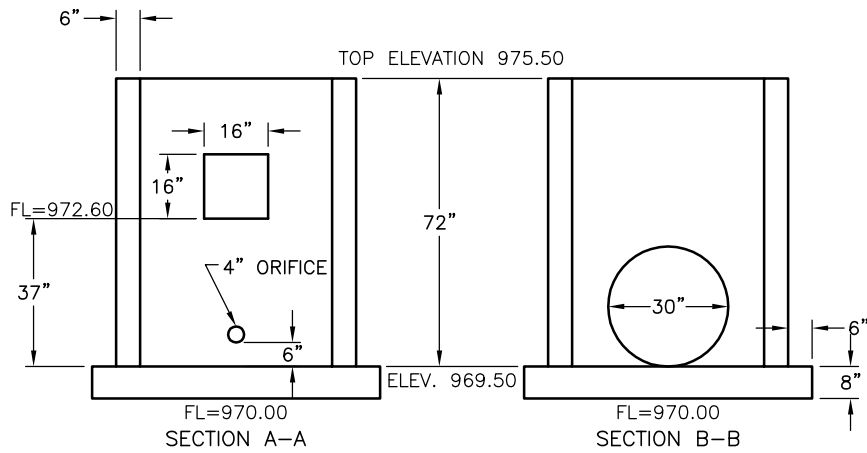
NOTES:  
CEMENT TO BE PER ASTM C-150  
REINFORCING TO BE PER ASTM A-615 GRADE 60  
CONCRETE TO BE AIR ENTRAINED 4000 PSI @ 28 DAYS MINIMUM

**B BARBOUR CONCRETE COMPANY**  
21421 E. TRUMAN ROAD INDEPENDENCE, MO 64056 (816) 796-3344 FAX (816) 796-3518

WALL REINFORCING: #4 @ 12" O.C.E.W.	BASE REINFORCING: #4 @ 6" O.C.E.W.
--	---------------------------------------

KAT EXCAVATION, INC.  
WOODLAND GLEN 2nd PLAT  
LEE'S SUMMIT, MISSOURI

STRUCTURE 501		DESCRIPTION CURB INLET		
DRAWN MARK P	DATE 4/20/2021	SCALE NTS	MIX DESIGN 4000 PSI	BCWO NUMBER
CHECKED N/A	DATE N/A	INSPECTION N/A	SHT 1 OF 1	21-1099



SHIP WITH THIS BOX:  
1-48" X 48" ID TRASH RACK

PLEASE NOTE: THE BMP SOLUTIONS PRODUCTS  
ARE SUPPLIED AND INSTALLED BY CONTRACTOR

UNIT WEIGHTS	(LBS)
TOP SECTION	
MID SECTION 2	
MID SECTION 1	
BASE SECTION	7,505
BASE SLAB	3,556
TOTAL BASE WT	11,060

NOTES:  
CEMENT TO BE PER ASTM C-150  
REINFORCING TO BE PER ASTM A-615 GRADE 60  
CONCRETE TO BE AIR ENTRAINED 4000 PSI @ 28 DAYS MINIMUM

**B** BARBOUR CONCRETE COMPANY  
21421 E. TRUMAN ROAD INDEPENDENCE, MO 64056 (816) 796-3344 FAX (816) 796-3518

WALL REINFORCING:  
#4 @ 12" O.C.E.W.

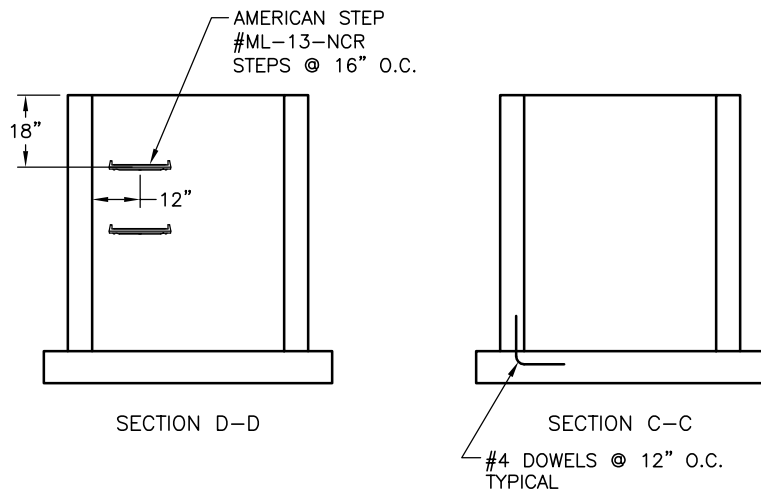
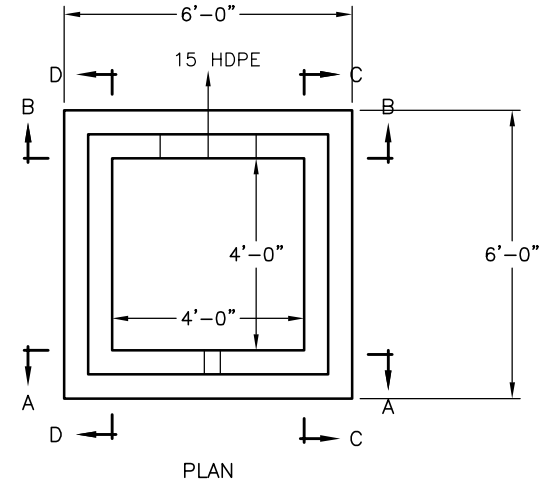
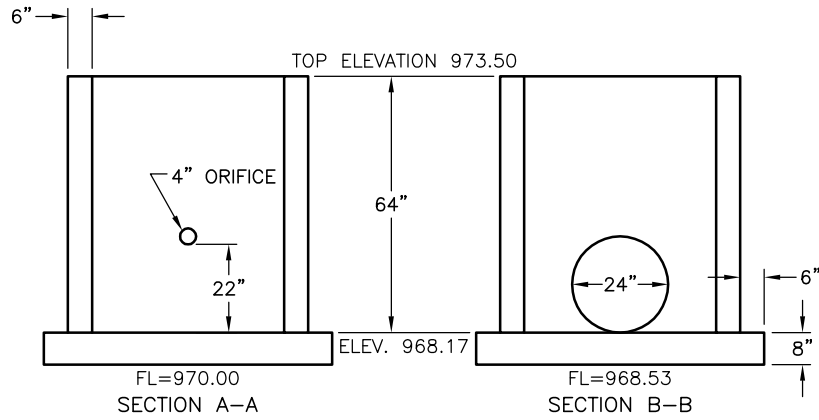
BASE REINFORCING:  
#4 @ 6" O.C.E.W.

KAT EXCAVATION, INC.  
WOODLAND GLEN 2nd PLAT  
LEE'S SUMMIT, MISSOURI

STRUCTURE		DESCRIPTION		
601		OUTLET STRUCTURE		
DRAWN	DATE	SCALE	MIX DESIGN	BCWO NUMBER
MARK P	4/20/2021	NTS	4000 PSI	21-1099
CHECKED	DATE	INSPECTION	SHT 1 OF 1	
N/A	N/A	N/A		

REV.	DATE	BY	DESCRIPTION

T:\21-1099 KAT - WOODLAND GLEN 2ND PLAT STORM\21-1099 KAT.DWG



SHIP WITH THIS BOX:  
1-48" X 48" ID TRASH RACK

PLEASE NOTE: THE BMP SOLUTIONS PRODUCTS  
ARE SUPPLIED AND INSTALLED BY CONTRACTOR

REVISIONS		DESCRIPTION
REV.	DATE	BY

UNIT WEIGHTS	(LBS)
TOP SECTION	
MID SECTION 2	
MID SECTION 1	
BASE SECTION	6,872
BASE SLAB	3,556
TOTAL BASE WT	10,427

NOTES:  
CEMENT TO BE PER ASTM C-150  
REINFORCING TO BE PER ASTM A-615 GRADE 60  
CONCRETE TO BE AIR ENTRAINED 4000 PSI @ 28 DAYS MINIMUM

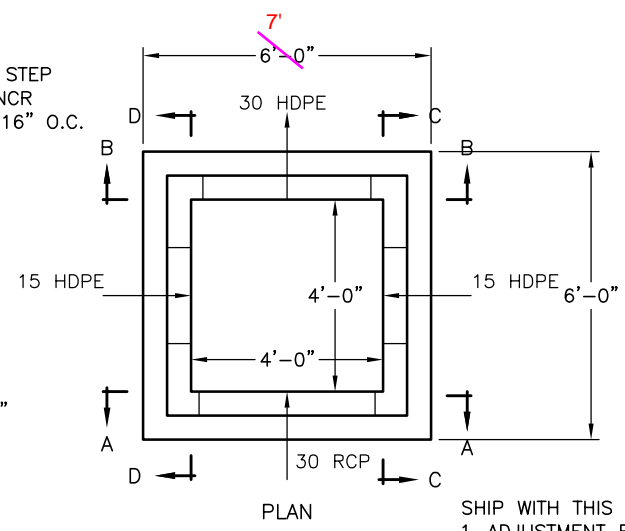
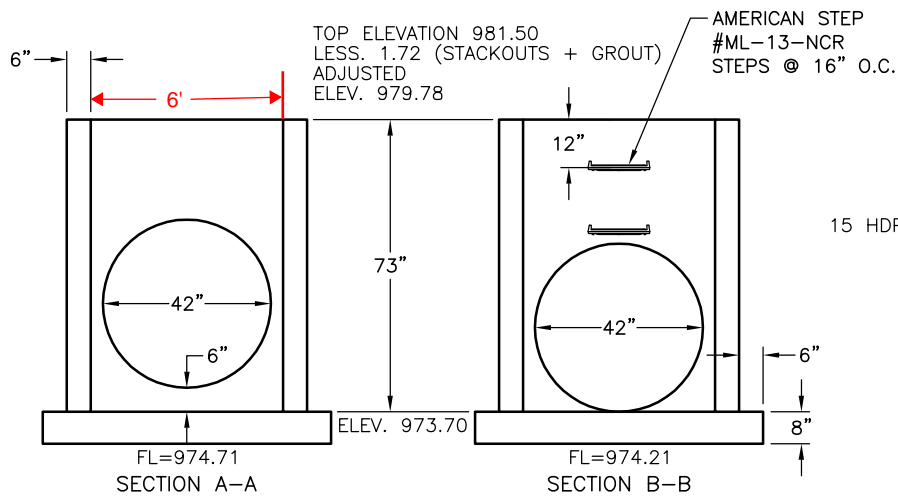
**B BARBOUR CONCRETE COMPANY**  
21421 E. TRUMAN ROAD (816) 796-3344  
INDEPENDENCE, MO 64056 FAX (816) 796-3518

WALL REINFORCING:  
#4 @ 12" O.C.E.W.

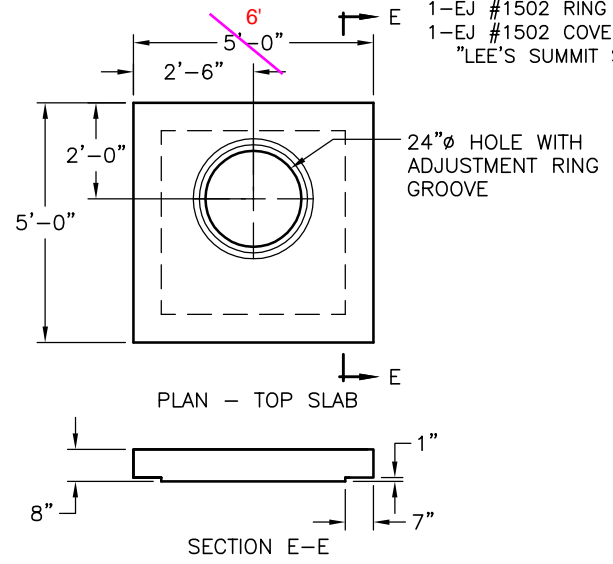
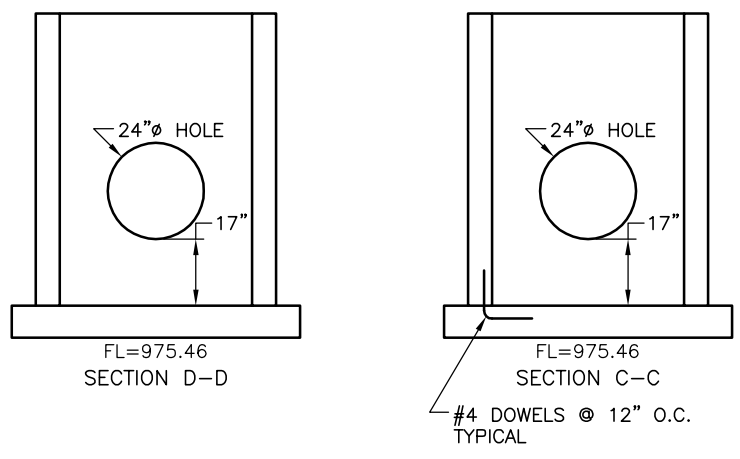
BASE REINFORCING:  
#4 @ 6" O.C.E.W.

KAT EXCAVATION, INC.  
WOODLAND GLEN 2nd PLAT  
LEE'S SUMMIT, MISSOURI

STRUCTURE		DESCRIPTION		
701		OUTLET STRUCTURE		
DRAWN	DATE	SCALE	MIX DESIGN	BCWO NUMBER
MARK P	4/20/2021	NTS	4000 PSI	21-1099
CHECKED	DATE	INSPECTION	SHT 1 OF 1	
N/A	N/A	N/A		



SHIP WITH THIS BOX:  
1-ADJUSTMENT RING 4" T&G  
1-EJ #1502 RING WITH MUDRING  
1-EJ #1502 COVER  
"LEE'S SUMMIT STORM"



TOP SLAB REINFORCING	
#5 @ 6" O.C.E.W. WITH #5 DIAGONALS AROUND CASTING 1 1/2" CLEAR BOTTOM	
UNIT WEIGHTS	(LBS)
TOP SLAB	2,159
TOP SECTION	
MID SECTION 2	
MID SECTION 1	
BASE SECTION	6,220
BASE SLAB	3,556
TOTAL BASE WT	9,776

NOTES:  
CEMENT TO BE PER ASTM C-150  
REINFORCING TO BE PER ASTM A-615 GRADE 60  
CONCRETE TO BE AIR ENTRAINED 4000 PSI @ 28 DAYS MINIMUM

**B BARBOUR CONCRETE COMPANY**  
21421 E. TRUMAN ROAD INDEPENDENCE, MO 64056 (816) 796-3344 FAX (816) 796-3518

WALL REINFORCING: #4 @ 12" O.C.E.W.	BASE REINFORCING: #4 @ 6" O.C.E.W.
--	---------------------------------------

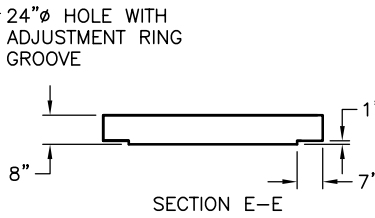
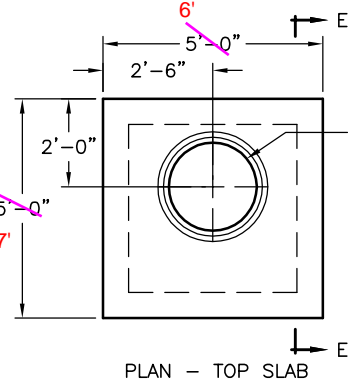
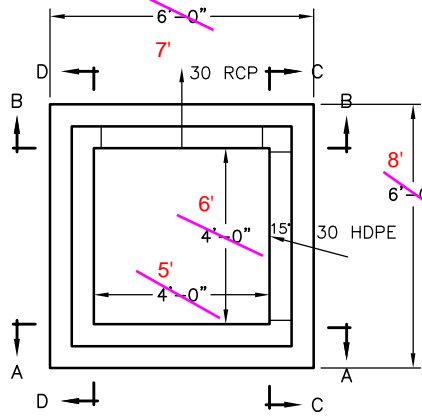
KAT EXCAVATION, INC.  
WOODLAND GLEN 2nd PLAT  
LEE'S SUMMIT, MISSOURI

STRUCTURE 801		DESCRIPTION JUNCTION BOX		
DRAWN MARK P	DATE 4/20/2021	SCALE NTS	MIX DESIGN 4000 PSI	BCWO NUMBER
CHECKED N/A	DATE N/A	INSPECTION N/A	SHT 1 OF 1	21-1099

REV.	DATE	BY	DESCRIPTION

T:\21-1099-KAT - WOODLAND GLEN 2ND PLAT STORM\21-1099-KAT.DWG

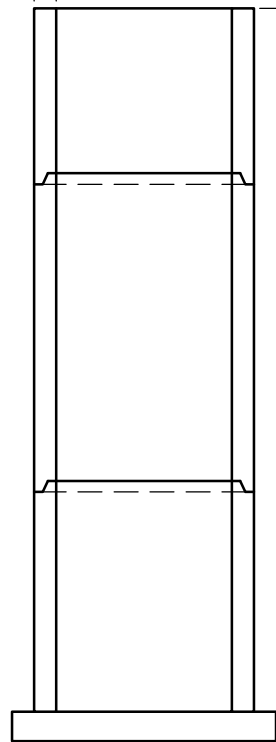




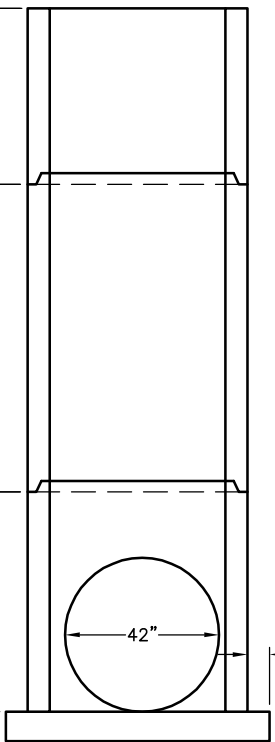
PLAN

TOP ELEVATION 992.37  
LESS. 1.72 (STACKOUTS + GROUT)  
ADJUSTED  
ELEV. 990.65

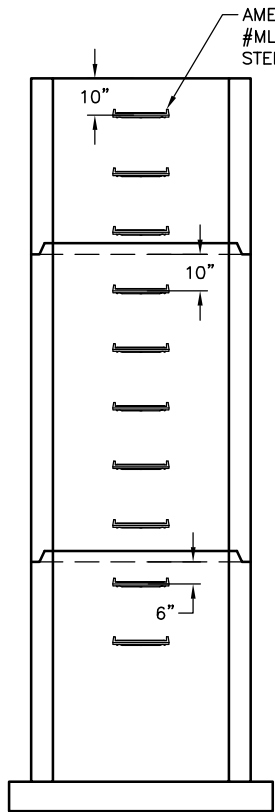
6"



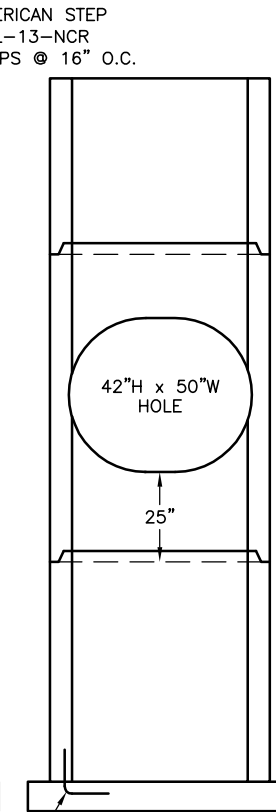
SECTION A-A



SECTION B-B



SECTION D-D



SECTION C-C

SHIP WITH THIS BOX:  
1-ADJUSTMENT RING 4" T&G  
1-EJ #1502 RING WITH MUDRING  
1-EJ #1502 COVER  
"LEE'S SUMMIT STORM"

TOP SLAB REINFORCING	
#5 @ 6" O.C.E.W. WITH #5 DIAGONALS AROUND CASTING 1 1/2" CLEAR BOTTOM	
UNIT WEIGHTS	(LBS)
TOP SLAB	2,159
TOP SECTION	5,333
MID SECTION 2	
MID SECTION 1	8,448
BASE SECTION	5,954
BASE SLAB	3,556
TOTAL BASE WT	9,510

NOTES:  
CEMENT TO BE PER ASTM C-150  
REINFORCING TO BE PER ASTM A-615 GRADE 60  
CONCRETE TO BE AIR ENTRAINED 4000 PSI @ 28 DAYS MINIMUM

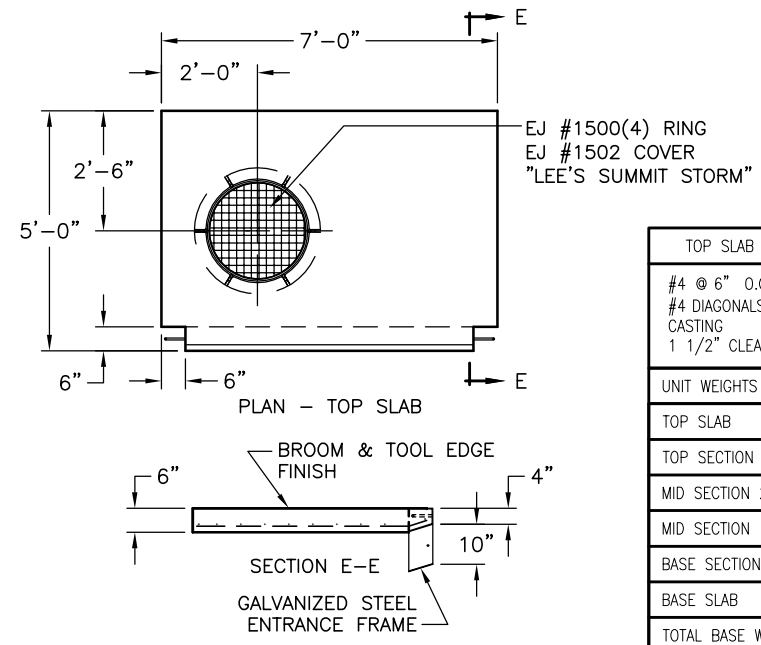
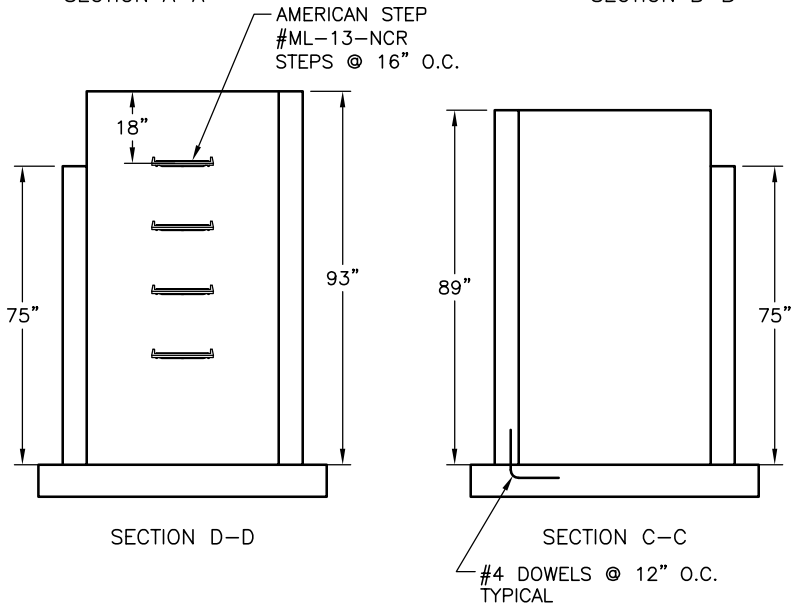
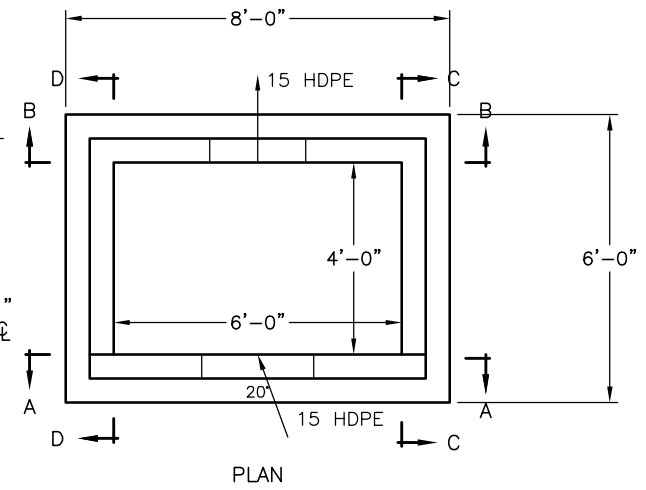
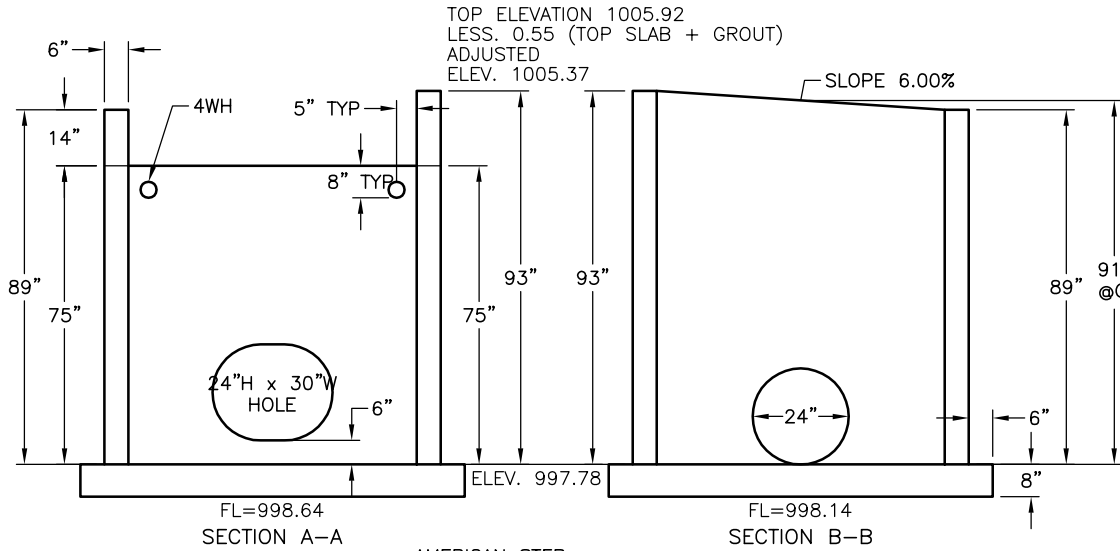
**B BARBOUR CONCRETE COMPANY**  
21421 E. TRUMAN ROAD INDEPENDENCE, MO 64056 (816) 796-3344 FAX (816) 796-3518

WALL REINFORCING: #5 @ 12" O.C. VERT. #5 @ 6" O.C. HORIZ.	BASE REINFORCING: #5 @ 6" O.C.E.W.
---	---------------------------------------

KAT EXCAVATION, INC.  
WOODLAND GLEN 2nd PLAT  
LEE'S SUMMIT, MISSOURI

STRUCTURE 802		DESCRIPTION JUNCTION BOX		
DRAWN	DATE	SCALE	MIX DESIGN	BCWO NUMBER
MARK P	4/20/2021	NTS	4000 PSI	21-1099
CHECKED	DATE	INSPECTION	SHT 1 OF 1	
N/A	N/A	N/A		

REV.	DATE	BY	DESCRIPTION



TOP SLAB REINFORCING	
#4 @ 6" O.C.E.W. WITH #4 DIAGONALS AROUND CASTING 1 1/2" CLEAR BOTTOM	
UNIT WEIGHTS	(LBS)
TOP SLAB	2,593
TOP SECTION	
MID SECTION 2	
MID SECTION 1	
BASE SECTION	11,226
BASE SLAB	4,741
TOTAL BASE WT	15,967

NOTES:  
CEMENT TO BE PER ASTM C-150  
REINFORCING TO BE PER ASTM A-615 GRADE 60  
CONCRETE TO BE AIR ENTRAINED 4000 PSI @ 28 DAYS MINIMUM

**B BARBOUR CONCRETE COMPANY**  
21421 E. TRUMAN ROAD INDEPENDENCE, MO 64056 (816) 796-3344 FAX (816) 796-3518

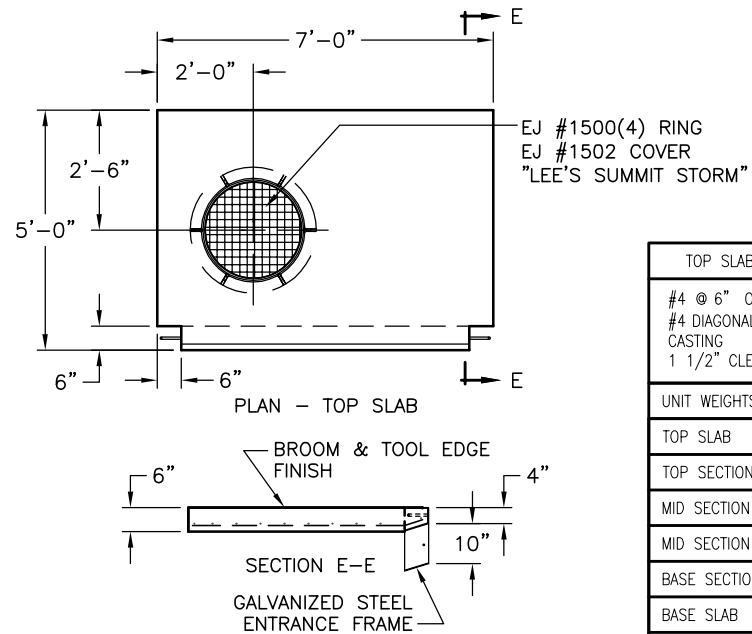
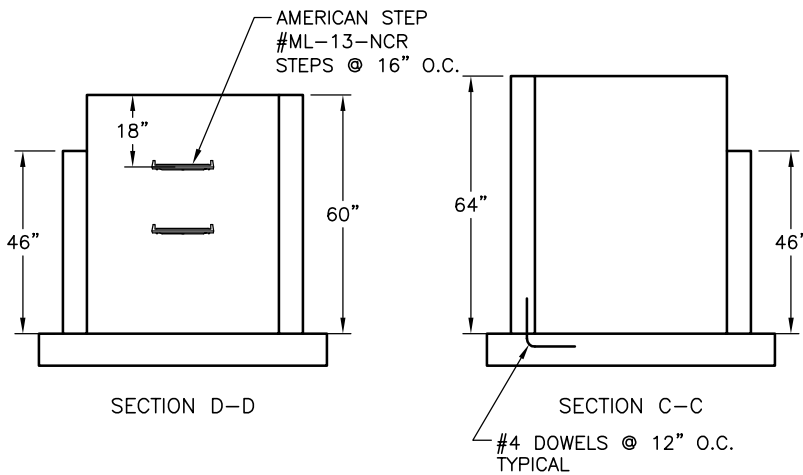
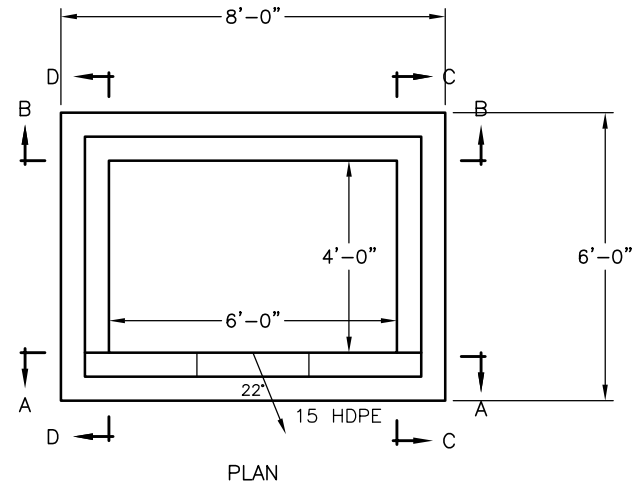
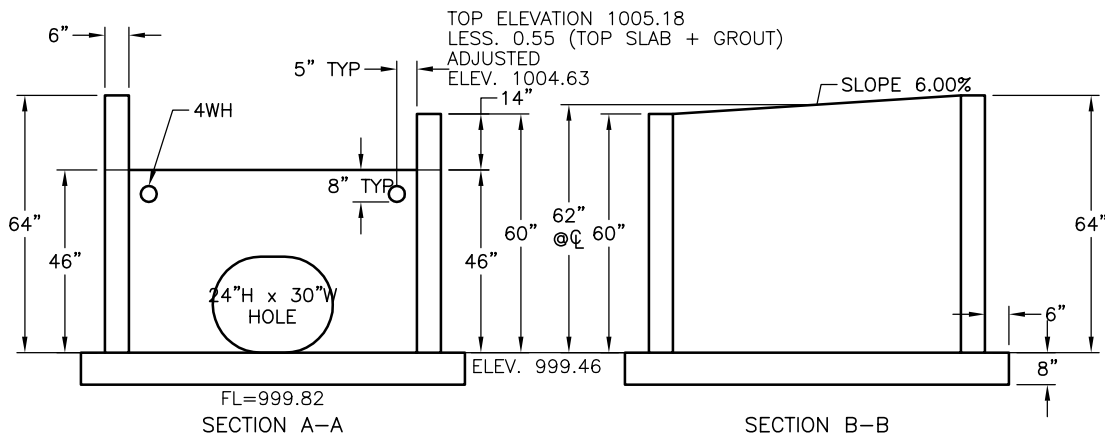
WALL REINFORCING: #5 @ 12" O.C. VERT. #5 @ 6" O.C. HORIZ.	BASE REINFORCING: #5 @ 6" O.C.E.W.
---	---------------------------------------

KAT EXCAVATION, INC.  
WOODLAND GLEN 2nd PLAT  
LEE'S SUMMIT, MISSOURI

STRUCTURE 901		DESCRIPTION CURB INLET		
DRAWN MARK P	DATE 4/20/2021	SCALE NTS	MIX DESIGN 4000 PSI	BCWO NUMBER
CHECKED N/A	DATE N/A	INSPECTION N/A	SHT 1 OF 1	21-1099

REV.	DATE	BY	DESCRIPTION

T:\21-1099 KAT - WOODLAND GLEN 2ND PLAT STORM\21-1099 KAT.DWG



TOP SLAB REINFORCING	
#4 @ 6" O.C.E.W. WITH #4 DIAGONALS AROUND CASTING 1 1/2" CLEAR BOTTOM	
UNIT WEIGHTS	(LBS)
TOP SLAB	2,593
TOP SECTION	
MID SECTION 2	
MID SECTION 1	
BASE SECTION	7,520
BASE SLAB	4,741
TOTAL BASE WT	12,261

NOTES:  
 CEMENT TO BE PER ASTM C-150  
 REINFORCING TO BE PER ASTM A-615 GRADE 60  
 CONCRETE TO BE AIR ENTRAINED 4000 PSI @ 28 DAYS MINIMUM

**B BARBOUR CONCRETE COMPANY**  
 21421 E. TRUMAN ROAD INDEPENDENCE, MO 64056 (816) 796-3344 FAX (816) 796-3518

WALL REINFORCING:  
 #4 @ 12" O.C.E.W.

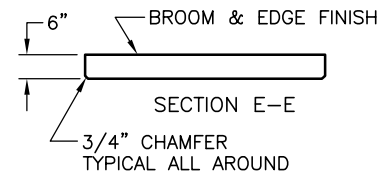
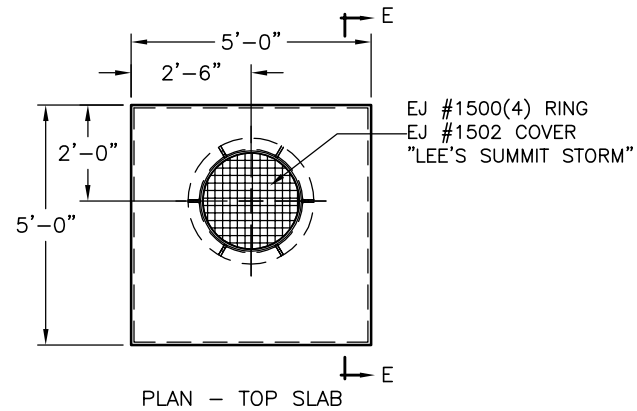
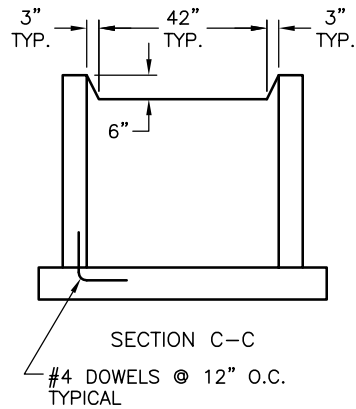
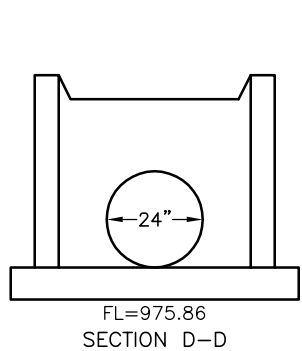
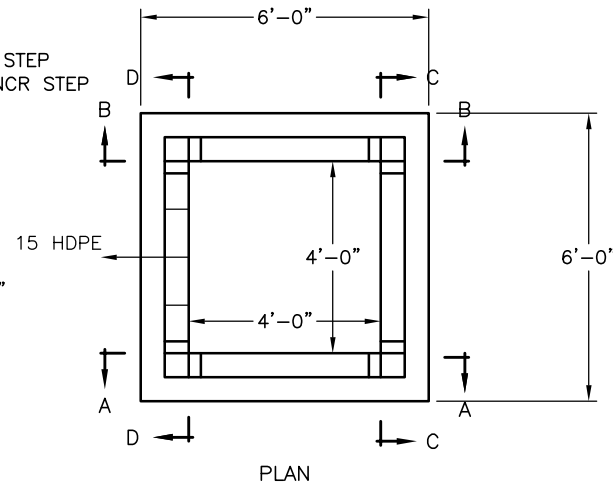
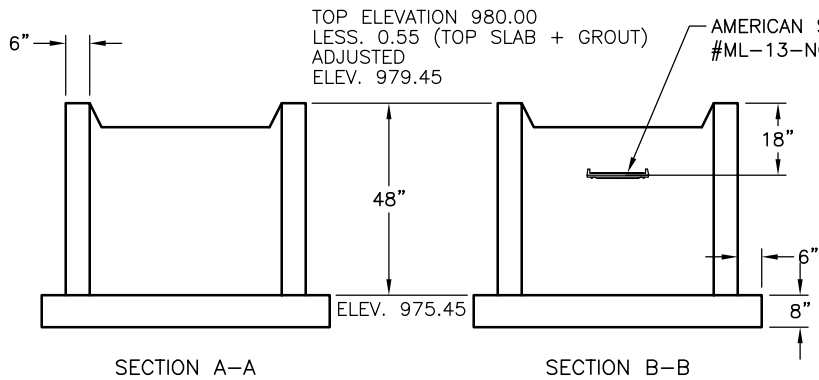
BASE REINFORCING:  
 #4 @ 6" O.C.E.W.

KAT EXCAVATION, INC.  
 WOODLAND GLEN 2nd PLAT  
 LEE'S SUMMIT, MISSOURI

STRUCTURE		DESCRIPTION		
902		CURB INLET		
DRAWN	DATE	SCALE	MIX DESIGN	BCWO NUMBER
MARK P	4/20/2021	NTS	4000 PSI	21-1099
CHECKED	DATE	INSPECTION	SHT 1 OF 1	
N/A	N/A	N/A		

REV.	DATE	BY	DESCRIPTION

T:21-1099 KAT - WOODLAND GLEN 2ND PLAT STORM\21-1099 KAT.DWG



TOP SLAB REINFORCING	
#5 @ 6" O.C.E.W. WITH #5 DIAGONALS AROUND CASTING 1 1/2" CLEAR BOTTOM	
UNIT WEIGHTS	(LBS)
TOP SLAB	1,852
TOP SECTION	
MID SECTION 2	
MID SECTION 1	
BASE SECTION	4,508
BASE SLAB	3,556
TOTAL BASE WT	8,064

NOTES:  
CEMENT TO BE PER ASTM C-150  
REINFORCING TO BE PER ASTM A-615 GRADE 60  
CONCRETE TO BE AIR ENTRAINED 4000 PSI @ 28 DAYS MINIMUM

**B** BARBOUR CONCRETE COMPANY  
21421 E. TRUMAN ROAD INDEPENDENCE, MO 64056 (816) 796-3344 FAX (816) 796-3518

WALL REINFORCING:  
#4 @ 12" O.C.E.W.

BASE REINFORCING:  
#4 @ 6" O.C.E.W.

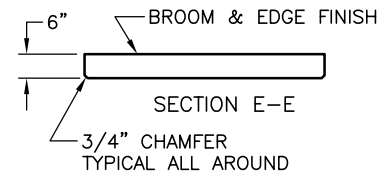
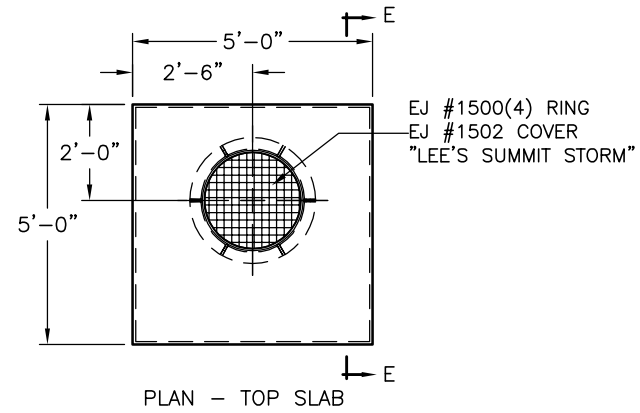
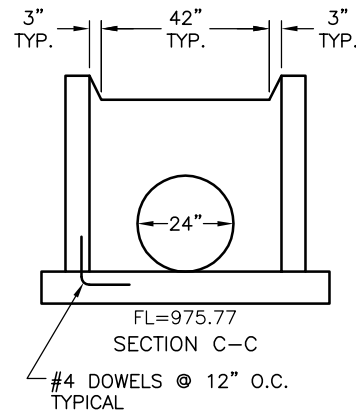
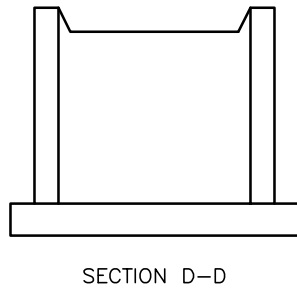
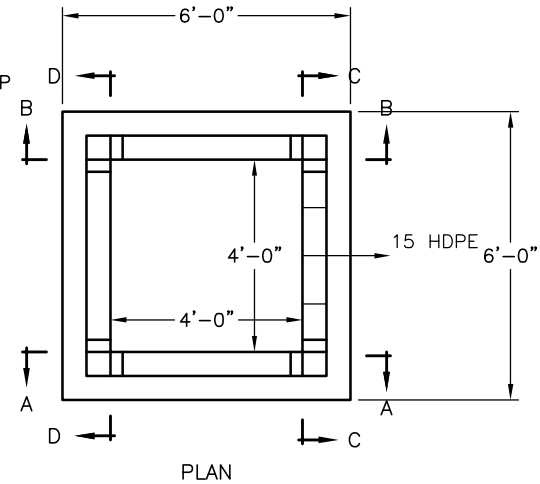
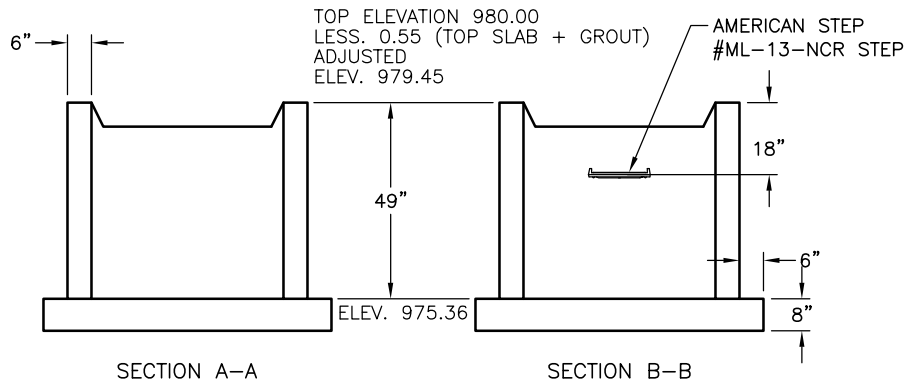
KAT EXCAVATION, INC.  
WOODLAND GLEN 2nd PLAT  
LEE'S SUMMIT, MISSOURI

STRUCTURE		DESCRIPTION		
1001		AREA INLET		
DRAWN	DATE	SCALE	MIX DESIGN	BCWO NUMBER
MARK P	4/20/2021	NTS	4000 PSI	21-1099
CHECKED	DATE	INSPECTION	SHT 1 OF 1	
N/A	N/A	N/A		

REVISIONS

REV.	DATE	BY	DESCRIPTION

T:\21-1099-KAT - WOODLAND GLEN 2ND PLAT STORM\21-1099 KAT.DWG



REVISIONS

REV.	DATE	BY	DESCRIPTION

T:\21-1099 KAT - WOODLAND GLEN 2ND PLAT STORM\21-1099 KAT.DWG

TOP SLAB REINFORCING	
#5 @ 6" O.C.E.W. WITH #5 DIAGONALS AROUND CASTING 1 1/2" CLEAR BOTTOM	
UNIT WEIGHTS	(LBS)
TOP SLAB	1,852
TOP SECTION	
MID SECTION 2	
MID SECTION 1	
BASE SECTION	4,619
BASE SLAB	3,556
TOTAL BASE WT	8,175

NOTES:  
CEMENT TO BE PER ASTM C-150  
REINFORCING TO BE PER ASTM A-615 GRADE 60  
CONCRETE TO BE AIR ENTRAINED 4000 PSI @ 28 DAYS MINIMUM

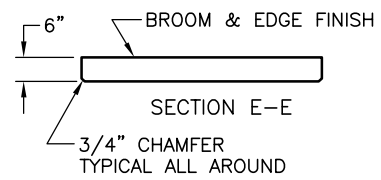
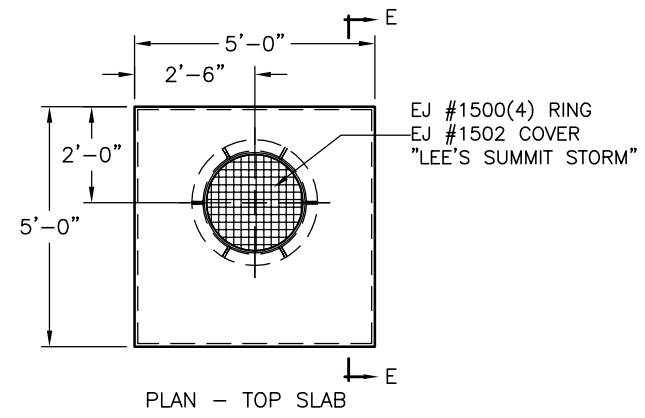
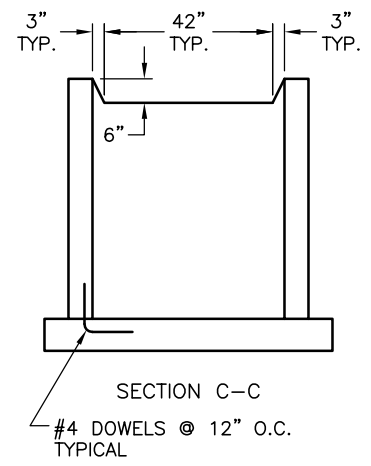
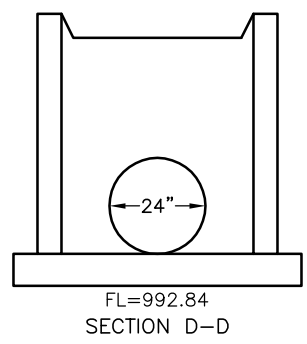
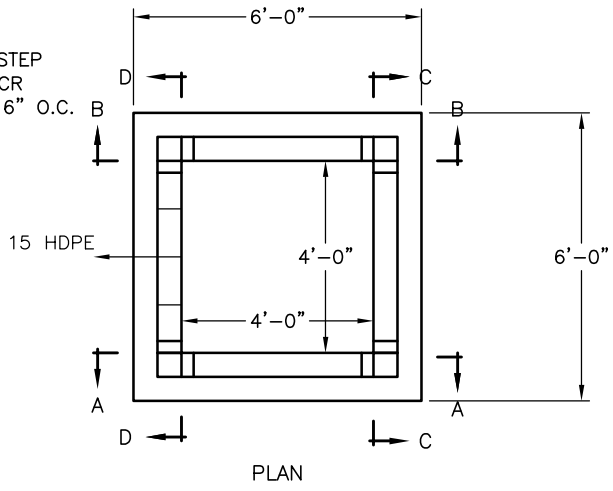
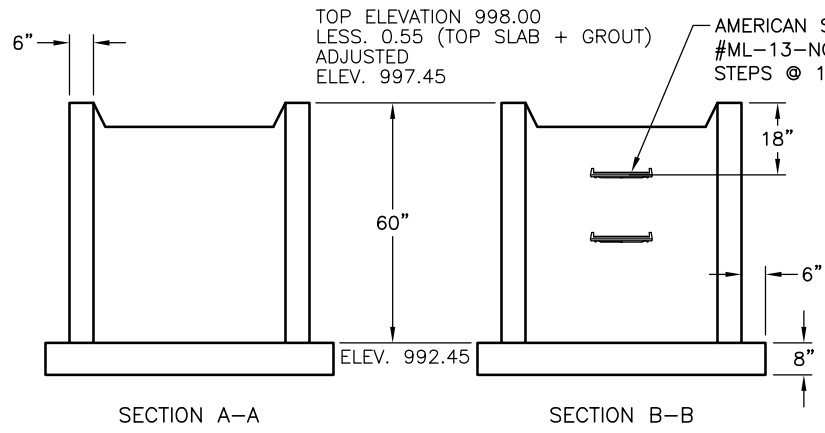
**B BARBOUR CONCRETE COMPANY**  
21421 E. TRUMAN ROAD INDEPENDENCE, MO 64056 (816) 796-3344 FAX (816) 796-3518

WALL REINFORCING:  
#4 @ 12" O.C.E.W.

BASE REINFORCING:  
#4 @ 6" O.C.E.W.

KAT EXCAVATION, INC.  
WOODLAND GLEN 2nd PLAT  
LEE'S SUMMIT, MISSOURI

STRUCTURE		DESCRIPTION		
1101		AREA INLET		
DRAWN	DATE	SCALE	MIX DESIGN	BCWO NUMBER
MARK P	4/20/2021	NTS	4000 PSI	21-1099
CHECKED	DATE	INSPECTION	SHT 1 OF 1	
N/A	N/A	N/A		



REVISIONS	
REV.	DESCRIPTION

TOP SLAB REINFORCING	
#5 @ 6" O.C.E.W. WITH #5 DIAGONALS AROUND CASTING 1,852	
UNIT WEIGHTS	(LBS)
TOP SLAB	
TOP SECTION	
MID SECTION 2	
MID SECTION 1	
BASE SECTION	5,841
BASE SLAB	3,556
TOTAL BASE WT	9,397

NOTES:  
 CEMENT TO BE PER ASTM C-150  
 REINFORCING TO BE PER ASTM A-615 GRADE 60  
 CONCRETE TO BE AIR ENTRAINED 4000 PSI @ 28 DAYS MINIMUM

**B BARBOUR CONCRETE COMPANY**  
 21421 E. TRUMAN ROAD INDEPENDENCE, MO 64056 (816) 796-3344 FAX (816) 796-3518

WALL REINFORCING: #4 @ 12" O.C.E.W.	BASE REINFORCING: #4 @ 6" O.C.E.W.
--	---------------------------------------

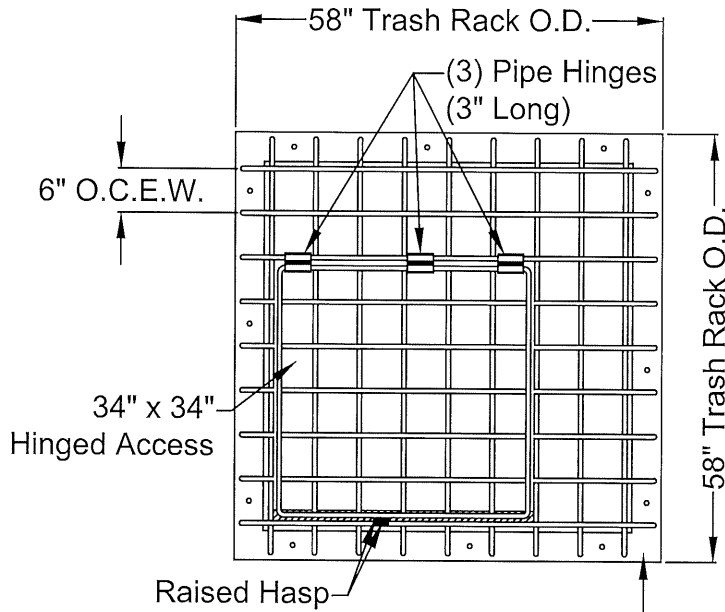
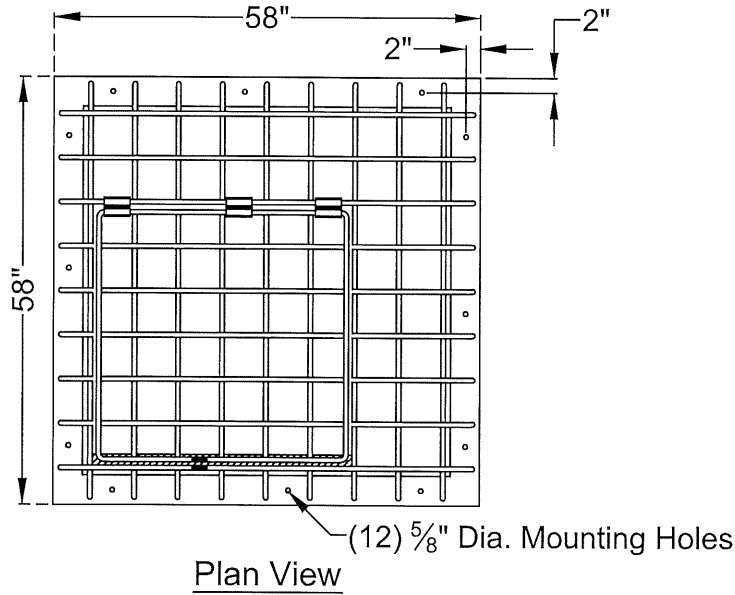
KAT EXCAVATION, INC.  
 WOODLAND GLEN 2nd PLAT  
 LEE'S SUMMIT, MISSOURI

STRUCTURE 1201		DESCRIPTION AREA INLET		
DRAWN MARK P	DATE 4/20/2021	SCALE NTS	MIX DESIGN 4000 PSI	BCWO NUMBER
CHECKED N/A	DATE N/A	INSPECTION N/A	SHT 1 OF 1	21-1099

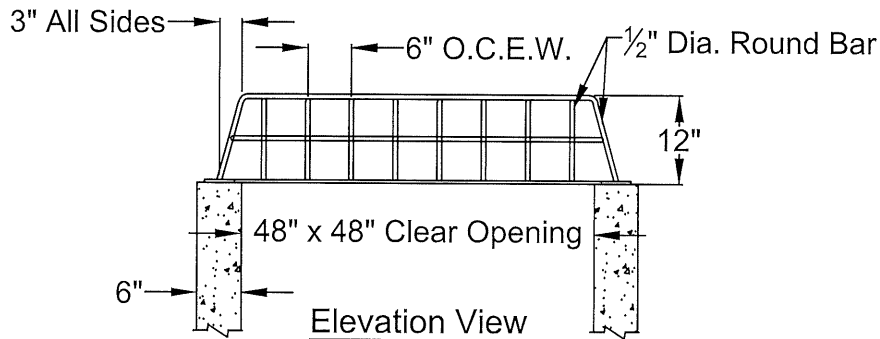
# Accessories

21421 East Truman Road  
Independence, MO 64056  
(816) 796-3344 FAX (816) 796-3518



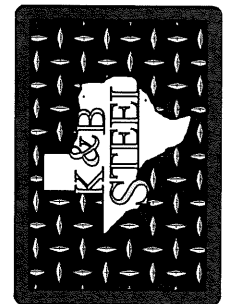


- 3/8" x 4" Flat Bar on all sides to make the Pad for the Trash Grate. (58" x 58" O.D.)
- 5/8" Holes in this Flat Bar for your Anchors
- 1/2" Round Bar to make up Trash Grate & Bars to be on 6" O.C.E.W.
- (1) 34" x 34" Hinged Opening for Entry.
- Access Lid to have Hasp for your Padlock (Lockable)



Note:  
 1. ASTM A-36  
 Steel Construction  
 2. Hot Dip Galvanized

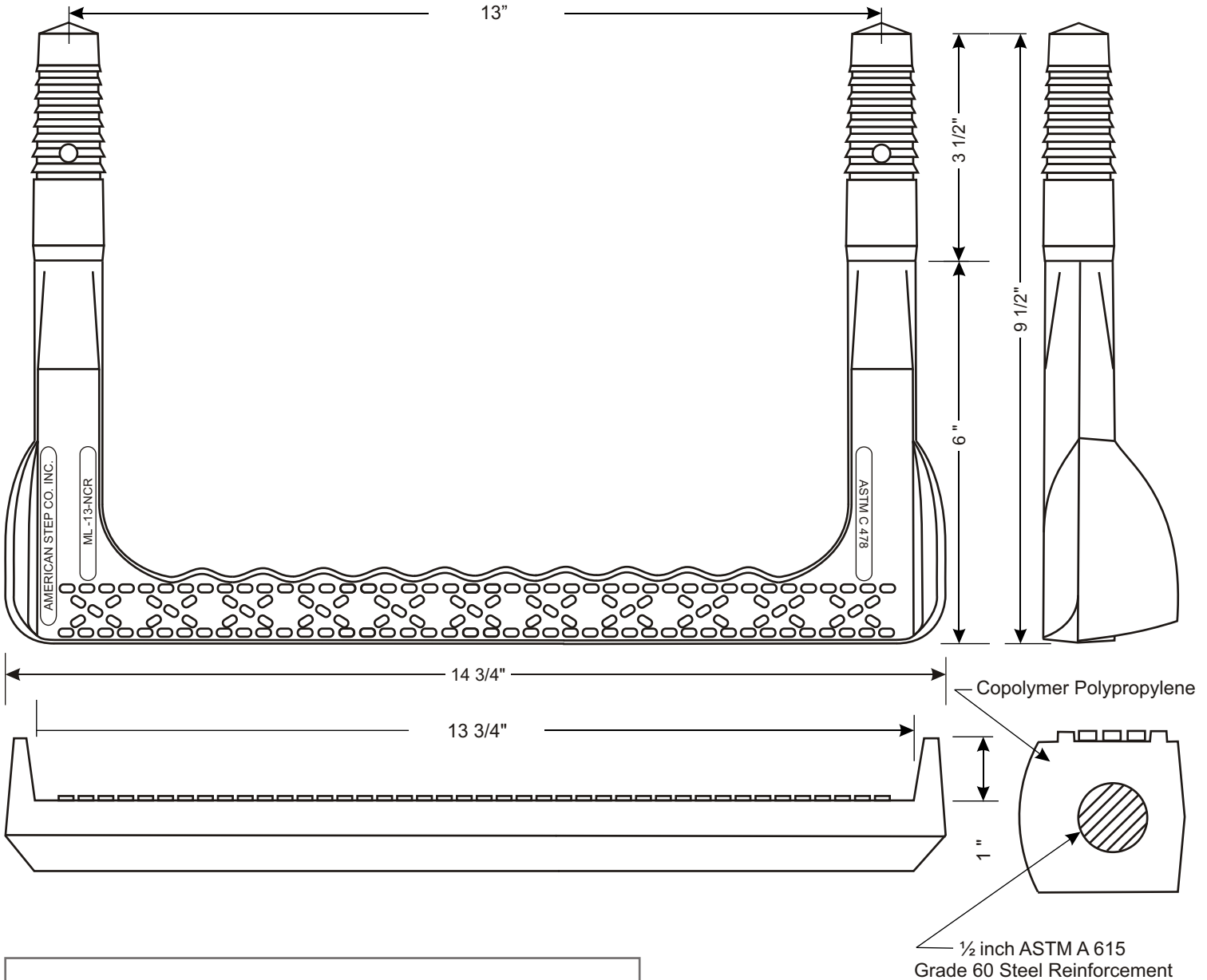
Galvanized Steel Trash Grate  
 48" x 48" x 12" Trash Rack w/ Hinged Opening  
 K&B Steel  
 E-Mail: kbsteel@vclornet.com  
 525 Industrial Blvd. Clarksville, Texas 75426  
 Phone: (903) 427-3980 FAX: (903) 427-5817



(Date: 04-12-21)



# ML-13-NCR



## ML-13-NCR

Mechanical Lock Installation Methods  
Minimum Concrete Strength Must Be 3000 psi.

### Preformed Holes

Two preformed holes on 13" centers  
Holes must be parallel  
Diameter of holes are 1.1" tapering to 7/8" in 3 1/2" of depth

### Drilled Holes

Drill two 1" holes on 13" centers with a minimum depth of 3 3/4"  
Use 1" masonry bit for drilling.  
Holes must be parallel.

Drive step with sledge hammer until both legs are completely seated

*This step meets or exceeds ASTM C 478 and OSHA Standards when properly installed.*



American Step Company, Inc.  
P.O. Box 137  
830 East Broadway  
Griffin, GA 30224-0137

800-988-STEP  
770-467-9844 (OFFICE)  
770-467-8011 (FAX)



# EZ-STIK

## PREMIUM BUTYL JOINT SEALANT

### What It Is

**EZ-STIK** is a premium preformed butyl joint sealant that is supplied in rope form. Containing a higher proportion of butyl rubber, EZ-STIK is carefully blended from uncured butyl rubber and other solids and will not shrink, crack, or dry out. Although clean to handle, it provides excellent adhesion and cohesion to a wide variety of surfaces - concrete, metal, most concrete coatings, glass, wood, and painted surfaces.

### Why It's Better

- Increased proportion of butyl rubber content
- Premium packaging
- Wide variety of sizes and styles
- All-weather performance
- Good adhesion to dry concrete, commonly specified concrete coatings, steel, glass, or painted surfaces
- Coated release paper for easy installation
- Long service life
- Cohesive properties allow for joint movement
- Compatible for use with rubber O-Ring designs
- Low moisture vapor transmission rate (MVTR)
- Special primers available for use on damp, contaminated, or difficult surfaces



### How It Performs

**EZ-STIK BUTYL JOINT SEALANT** meets or exceeds all requirements of the following Standards, Specifications and/or Test Methods:

**ASTM C 990** - Standard Specification for Joints for Concrete Pipe, Manholes, and Precast Box Sections Using Preformed Flexible Joint Sealants; Section 6.2 Butyl Rubber Sealants

**EPA Method 524.2** - Detection Method for Drinking Water Volatile Organic Compounds

**AASHTO M 198** - Joints for Circular Concrete Sewer and Culvert Pipe Using Flexible Watertight Gaskets

### Typical Applications

- |                                   |                                   |
|-----------------------------------|-----------------------------------|
| • Sanitary Manhole Joints         | • Underground Utility Vaults      |
| • Stormwater Manhole Joints       | • Stormwater Treatment Structures |
| • Irrigation and Drainage Systems | • Stormwater Inlet Structures     |
| • Box Culverts                    | • On-Site Treatment Tanks         |
| • Elliptical/Arch Pipe            | • Grease Interceptors             |
| • Architectural Foundations       | • Wet Wells                       |

Press-Seal believes all information is accurate as of its publication date. Information, specifications, and prices are all subject to change without notice. Press-Seal is not responsible for any inadvertent errors. Copyright 2008





# EZ-STIK

## SPECIFICATION and SELECTION GUIDE

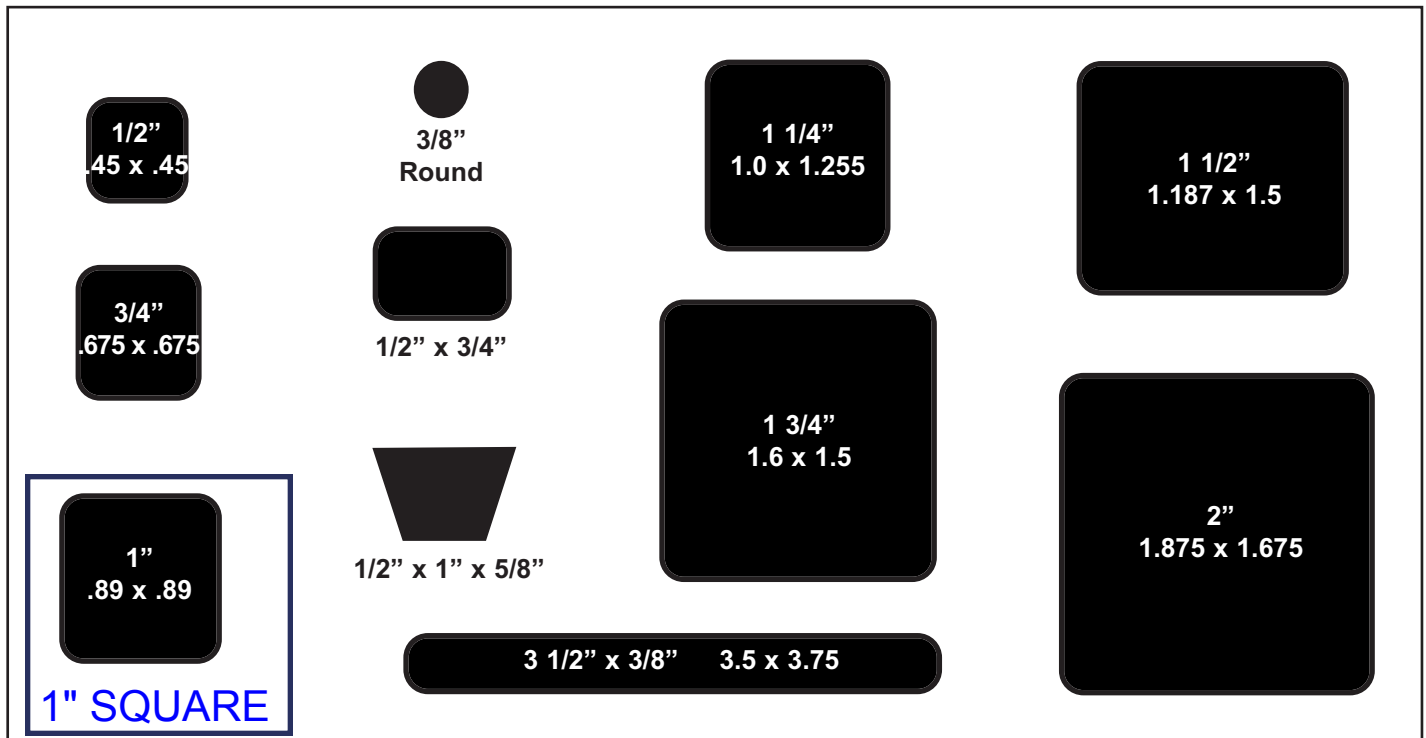
### Submittal Specification

The joints and/or joint surfaces of the structures shall be sealed with a butyl-rubber-based preformed flexible sealant conforming to ASTM C-990, paragraph 6.2. The material shall comply with AASHTO M198 for Type B Gaskets, and shall meet the testing requirements of EPA Method 524.2 for Drinking Water Volatile Organic Compounds.

The material shall be EZ-STIK as supplied by PRESS-SEAL GASKET CORPORATION, Fort Wayne, Indiana, or approved equal. The butyl material shall consist of 50% (min.) butyl rubber and shall contain 2% or less volatile matter.

For preformed joint sealants, the sealant shall be sized such that the joint is filled to 50% (min.) of its annular volume when fully assembled, and the sealant shall have the ends kneaded together at the overlap. Primer and/or adhesive as recommended by the sealant supplier shall be employed for adverse, critical, or other applications.

Testing of joints and compliance with construction requirements shall be conducted in strict conformance with the requirements of the sealant supplier.



Custom Sizes Available Upon Request

Also Available in Trowelable Bulk and Easy to Pump Bulk

All sizes sold 40 cartons per pallet. All pallets are shrink wrapped for outside storage. Quantity discounts available - contact our Customer Service Department.

Press-Seal believes all information is accurate as of its publication date. Information, specifications, and prices are all subject to change without notice. Press-Seal is not responsible for any inadvertent errors. Copyright 2008





### Description

EZ-STIK is a butyl-rubber-based sealant designed to be permanently flexible, tacky and resistant to moisture and deterioration by exposure to dilute chemical solutions. EZ-STIK meets ASTM C-990, Section 6.2 requirements for Butyl Rubber Sealant, EPA Method 524.2 for Drinking Water Volatile Organic Compounds and AASHTO M198 for Type B Gaskets.

### Typical Properties

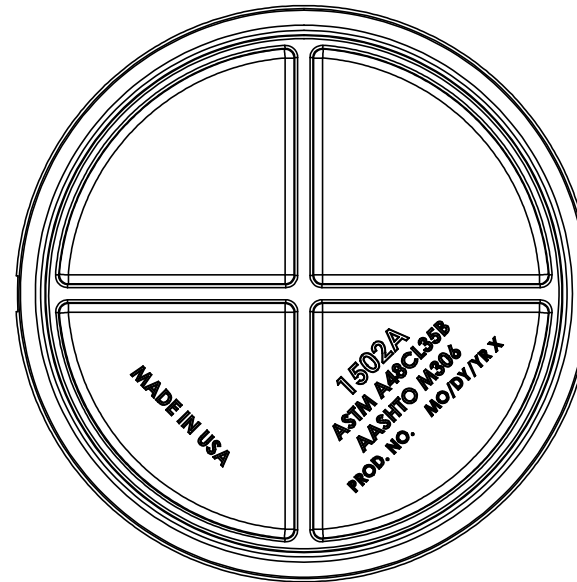
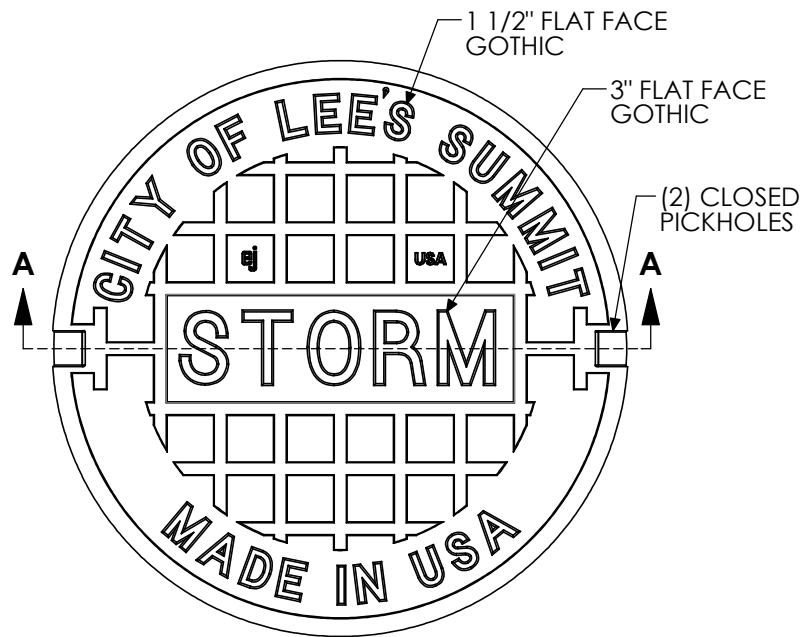
The following values represent typical test results and are manufacturing specifications.

	<u>SPEC.</u>	<u>REQUIRED</u>	<u>EZ-STIK</u>
Butyl Rubber (Hydrocarbon Content %)	ASTM D4	50% min.	62%
Ash Inert Mineral Filler %	AASHTO T111	30% min.	45-48%
Volatile Matter (AASHTO T47)	ASTM D6	2% max.	0.5-1.0%
Specific Gravity @ 77°F (AASHTO T229)	ASTM D71	1.15 - 1.50	1.25 - 1.35
Ductility @ 77°F, cm (AASHTO T51)	ASTM D113	5.0 min.	meets requirement
Flash Point C.O.C.	ASTM D92	350° min.	375°F
Fire Point C.O.C.	ASTM D92	375° min.	385°F
Compression Test			
@77°F, lbf/in <sup>3</sup>	ASTM C972	100 max.	40 - 55 lb-ft/in <sup>3</sup>
@32°F, lbf.in <sup>3</sup>		200 max.	130 - 160 lb-ft/in <sup>3</sup>
Low Temperature Flexibility			
@-10°F	ASTM C765	180° bend, no cracking, nor loss of adhesion.	Pass - no cracking or adhesion loss.
Elevated Temperature Flexibility			
14 days @ 157°F	ASTM C776	No sag, nor change in extruded shape.	Pass - no sag or shape change.
Adhesion After Impact	ASTM C776-84	No greater loss than 50% of adhesion.	Pass - no loss of adhesion.
Cone Penetration			
@ 77°F, dmm	ASTM D217	50 - 100 dmm	55 - 85 dmm
@ 32°F, dmm		40 min.	45 - 55 dmm
Chemical Resistance		No deterioration, no cracking, no swelling.	Pass - no visible change after 30 days immersion in 5% solutions HCl, H <sub>2</sub> SO <sub>4</sub> , NaOH, KOH, H <sub>2</sub> S

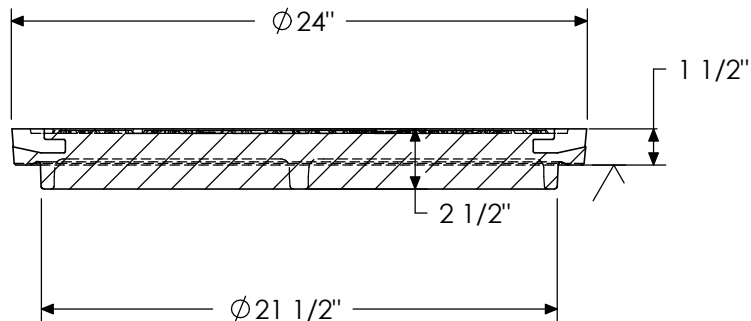
Press-Seal believes all information is accurate as of its publication date. Information, specifications, and prices are all subject to change without notice. Press-Seal is not responsible for any inadvertent errors. Copyright 2007



# 1502A Cover



**BOTTOM VIEW**



**SECTION A-A**

**Product Number**

00150246

**Design Features**

- Materials  
Gray Iron (CL35B)
- Design Load  
Heavy Duty
- Open Area  
n/a
- Coating  
Undipped
- √ Designates Machined Surface

**Certification**

- ASTM A48
- 
- 
- Country of Origin: USA

**Drawing Revision**

9/8/2011 Designer: JIJ  
7/31/2013 Revised By: DAE

**Disclaimer**

Weights (lbs/kg), dimensions (inches/mm) and drawings provided for your guidance. We reserve the right to modify specifications without prior notice.

CONFIDENTIAL: This drawing is the property of EJ Group, Inc. and embodies confidential information, registered marks, patents, trade secret information, and/or know how that is the property of EJ Group, Inc. Copyright © 2012 EJ Group, Inc. All rights reserved.

**Contact**

800 626 4653  
ejco.com

PRODUCT NUMBER

**00150011**

CATALOG NUMBER

**1500Z**

**FRAME**

LOAD RATING

**HEAVY DUTY**

COATING

**UNDIPPED**

ESTIMATED WEIGHT

FRAME: 120 LBS 55kg

MATERIAL SPECIFICATION

FRAME - GRAY IRON  
ASTM A48 CL35B

OPEN AREA

N/A

√ DESIGNATES MACHINE SURFACE

DRAWN  
TCL

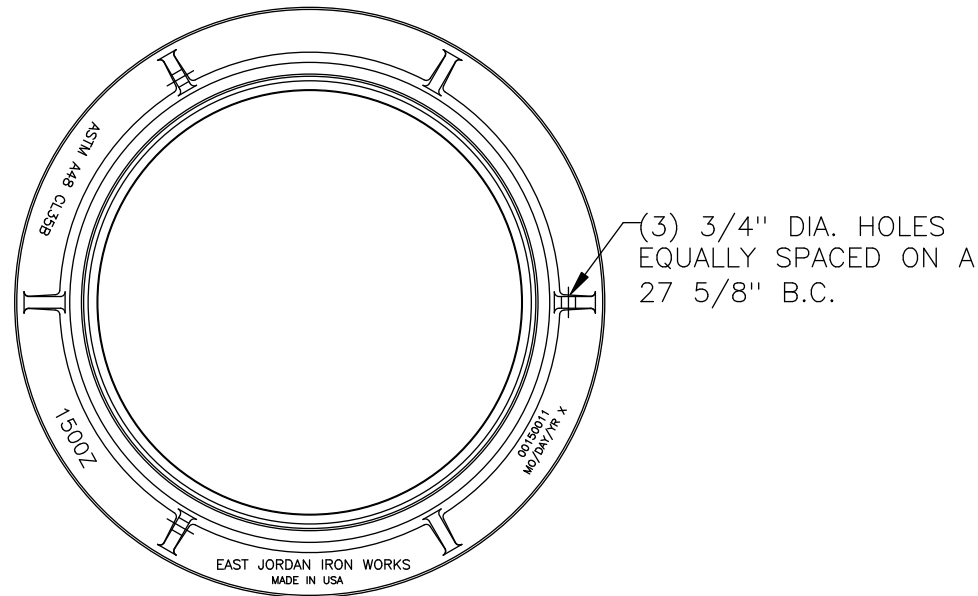
DATE  
04/08/02

LAST REVISED  
SMH

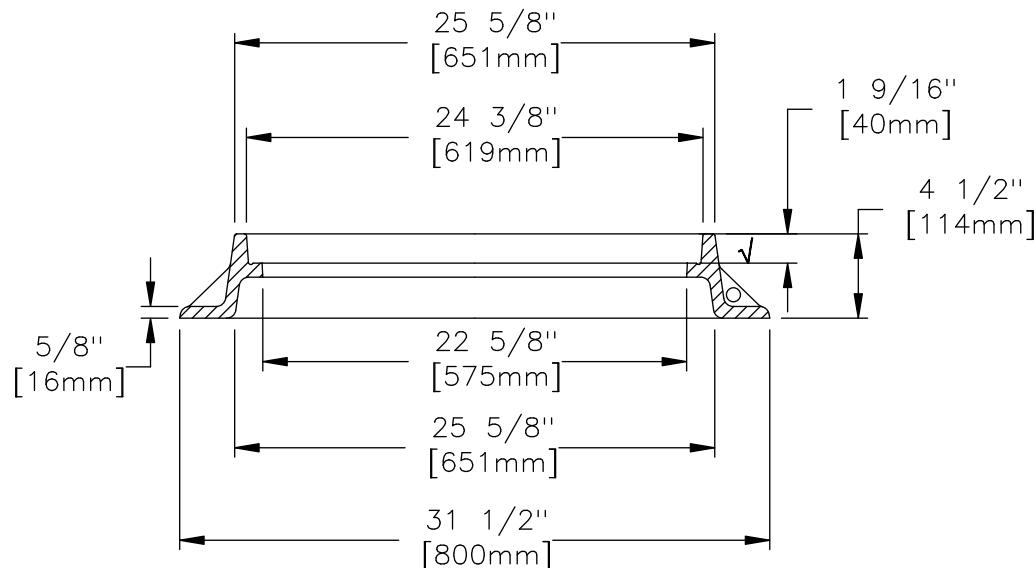
DATE  
09/15/06

REFERENCE INFORMATION

00150011

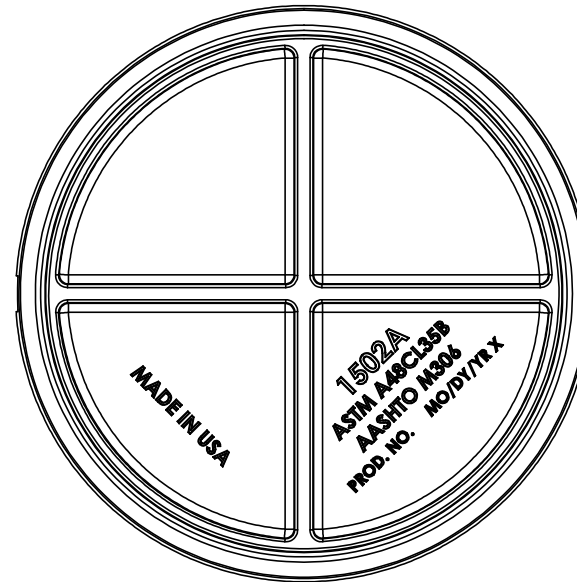
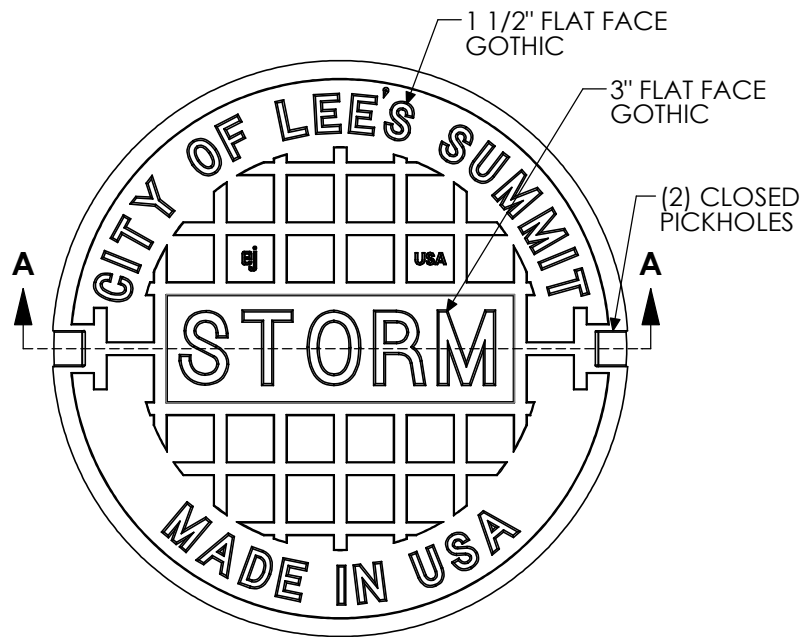


**PLAN VIEW**

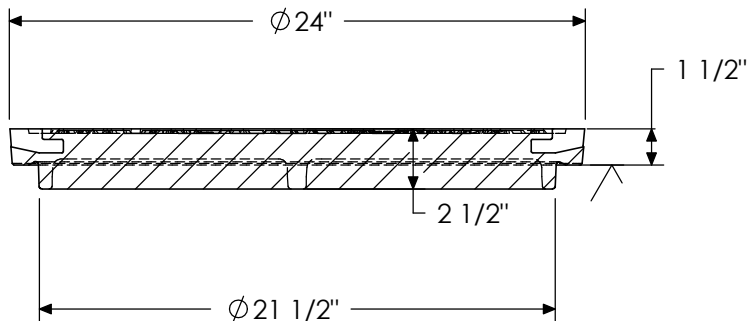


**SECTION VIEW**

# 1502A Cover



**BOTTOM VIEW**



**SECTION A-A**

**Product Number**

00150246

**Design Features**

- Materials  
Gray Iron (CL35B)
- Design Load  
Heavy Duty
- Open Area  
n/a
- Coating  
Undipped
- √ Designates Machined Surface

**Certification**

- ASTM A48
- 
- Country of Origin: USA

**Drawing Revision**

- 9/8/2011 Designer: JIJ
- 7/31/2013 Revised By: DAE

**Disclaimer**

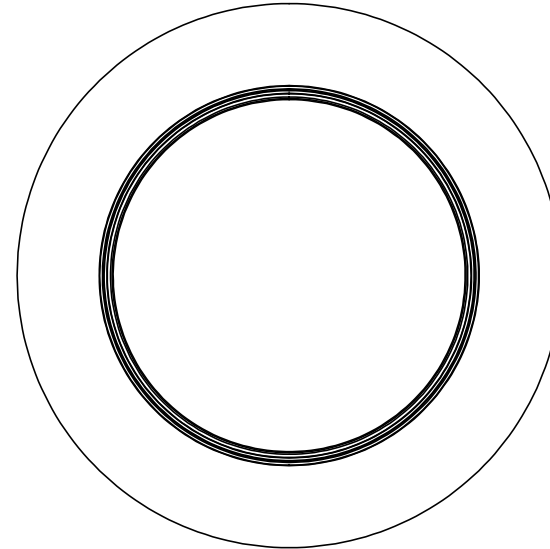
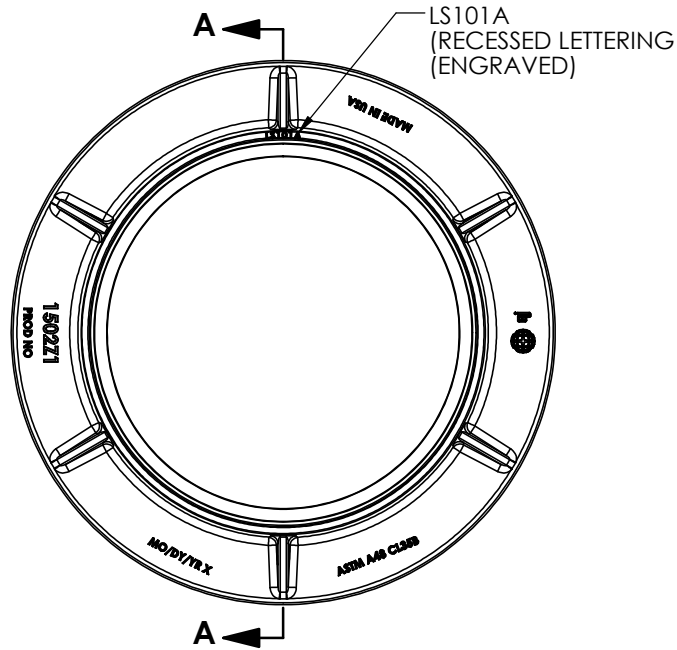
Weights (lbs/kg), dimensions (inches/mm) and drawings provided for your guidance. We reserve the right to modify specifications without prior notice.

CONFIDENTIAL: This drawing is the property of EJ Group, Inc. and embodies confidential information, registered marks, patents, trade secret information, and/or know how that is the property of EJ Group, Inc. Copyright © 2012 EJ Group, Inc. All rights reserved.

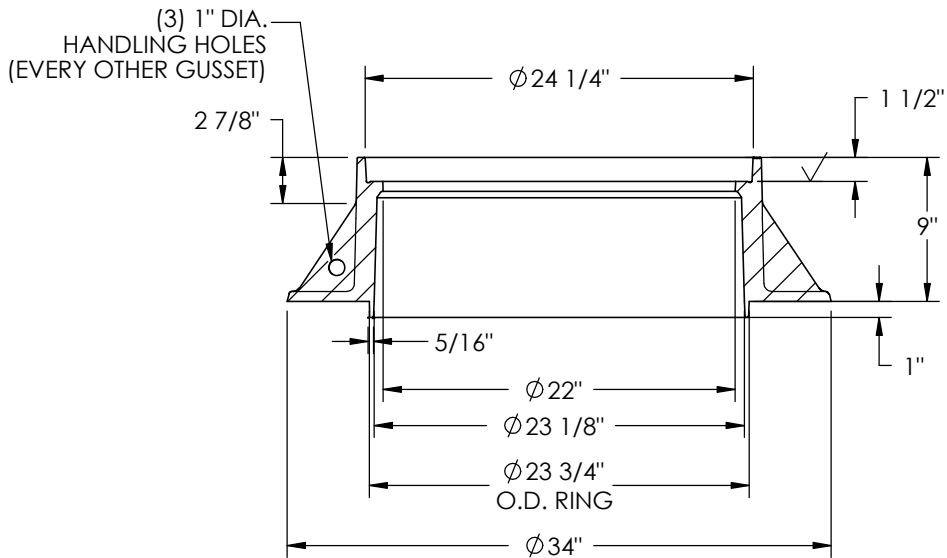
**Contact**

800 626 4653  
ejco.com

# 1502Z1 Frame



**BOTTOM VIEW**



**SECTION A-A**

**Product Number**

00150215

**Design Features**

- Materials  
Gray Iron (CL35B)
- Design Load  
Heavy Duty
- Open Area  
n/a
- Coating  
Undipped
- √ Designates Machined Surface

**Certification**

- ASTM A48
- 
- 
- Country of Origin: USA

**Drawing Revision**

8/3/2011 Designer: SBB  
09/09/2013 Revised By: DJH

**Disclaimer**

Weights (lbs/kg), dimensions (inches/mm) and drawings provided for your guidance. We reserve the right to modify specifications without prior notice.

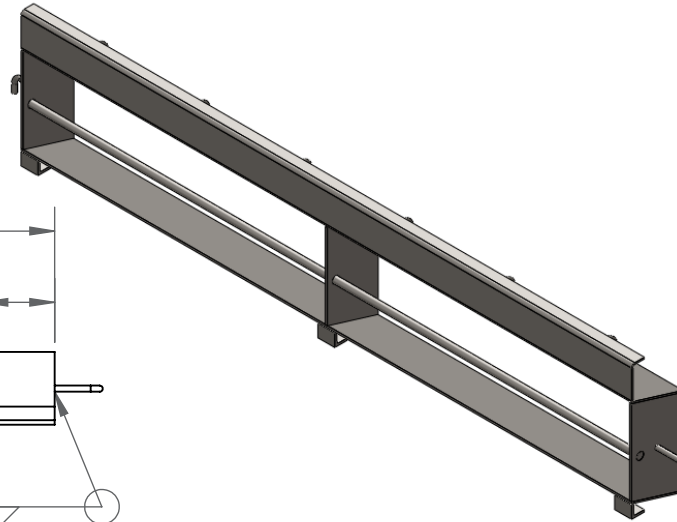
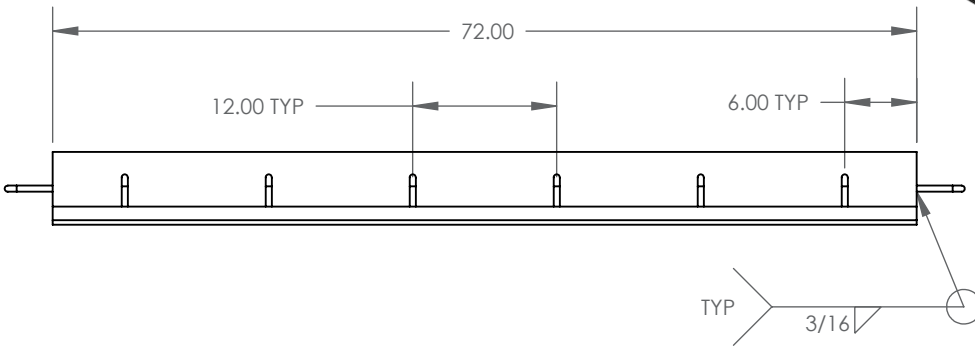
CONFIDENTIAL: This drawing is the property of EJ Group, Inc. and embodies confidential information, registered marks, patents, trade secret information, and/or know how that is the property of EJ Group, Inc. Copyright © 2012 EJ Group, Inc. All rights reserved.

**Contact**

800 626 4653  
ejco.com



# MO 10" CURB INLET 6' LONG

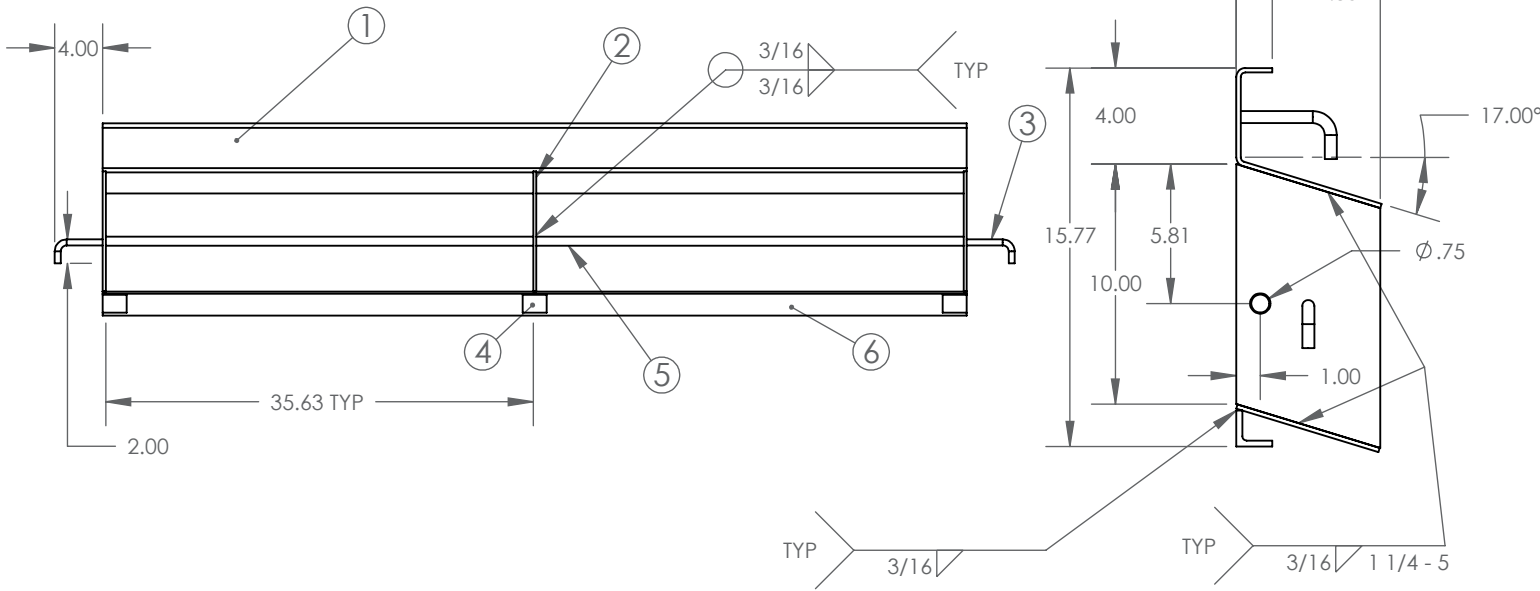


### Product Number

061006002

### Design Features

- Materials  
ASTM A-36 HRS
- Design Load  
NON-TRAFFIC
- WEIGHT 91.99 LBS
- Coating  
GALVANIZED



ITEM NO.	PART NUMBER	DESCRIPTION	QTY.
1	DNF000029	3/16" PLATE	1
2	DNF000020	1/4" PLATE	3
3	DNF000021	#4 REBAR	8
4	DNF000022	1.5 X 1.5 X .25 ANGLE	3
5	DNF000036	3/4" ROUND BAR	1
6	DNF000027	3/16" PLATE	1

### Drawing Revision

2/29/2012 Designer: PAS  
xx/xx/xxxx Revised By: xxx

### Disclaimer

Weights (lbs/kg), dimensions (inches/mm) and drawings provided for your guidance. We reserve the right to modify specifications without prior notice.

CONFIDENTIAL: This drawing is the property of EJ GROUP, Inc., and embodies confidential information, registered marks, patents, trade secret information and/or know how that is the property of EJ GROUP, Inc.  
Copyright © 2011 EJ GROUP, Inc.  
All rights reserved.

### Contact

800 626 4653  
ejco.com