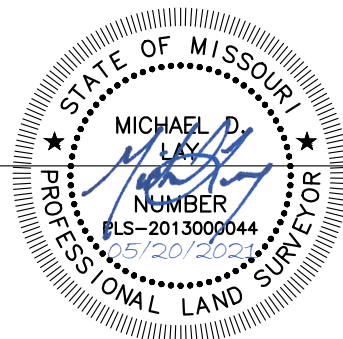


DESCRIPTION:

All that part of the Northwest Quarter of Section 34, Township 48 North, Range 32 West of the Fifth Principal Meridian, and a part of Graham Commercial Center, a subdivision in the City of Lee's Summit, Jackson County, Missouri, more particularly described as follows:

Commencing at the Northwest Corner of the Southwest Quarter of said Northwest Quarter; thence South 86°26'21" East, along the North line of said Southwest Quarter of the Northwest Quarter, a distance of 497.78 feet; thence South 03°33'39" West, departing said North line, a distance of 115.23 feet, to the Point of Beginning; thence North 89°39'29" East, a distance of 94.68 feet; thence South 86°20'31" East, a distance of 369.44 feet; thence South 03°39'29" West, a distance of 67.02 feet; thence North 86°24'48" West, a distance of 8.01 feet; thence South 40°15'39" West, a distance of 153.79 feet; thence South 46°39'29" West, a distance of 112.34 feet; thence South 39°55'15" West, a distance of 36.50 feet; thence North 70°29'07" West, a distance of 81.51 feet; thence North 57°36'52" West, a distance of 53.24 feet; thence North 20°16'17" East, a distance of 57.64 feet; thence North 30°16'07" West, a distance of 92.79 feet; thence North 02°16'25" West, a distance of 77.41 feet; thence North 86°20'31" West, a distance of 84.00 feet; thence North 15°49'01" West, a distance of 40.72 feet, to the Point of Beginning, containing 80,632.28 square feet, or 1.85 acres, more or less.

This is to certify that this real property legal description has been prepared by me or under my direct supervision.



Michael D. Lay
Missouri Professional Land Surveyor No. 2013000044



9801 Renner Boulevard
Lenexa, Kansas 66219
913.492.0400
www.gbateam.com
mlay@gbateam.com

PROJECT NUMBER
12720.00

DATE
05/20/2021

*Paragon Star Fifth Plat
Lee's Summit, Jackson Co., MO*

SHEET NUMBER

1 of 1