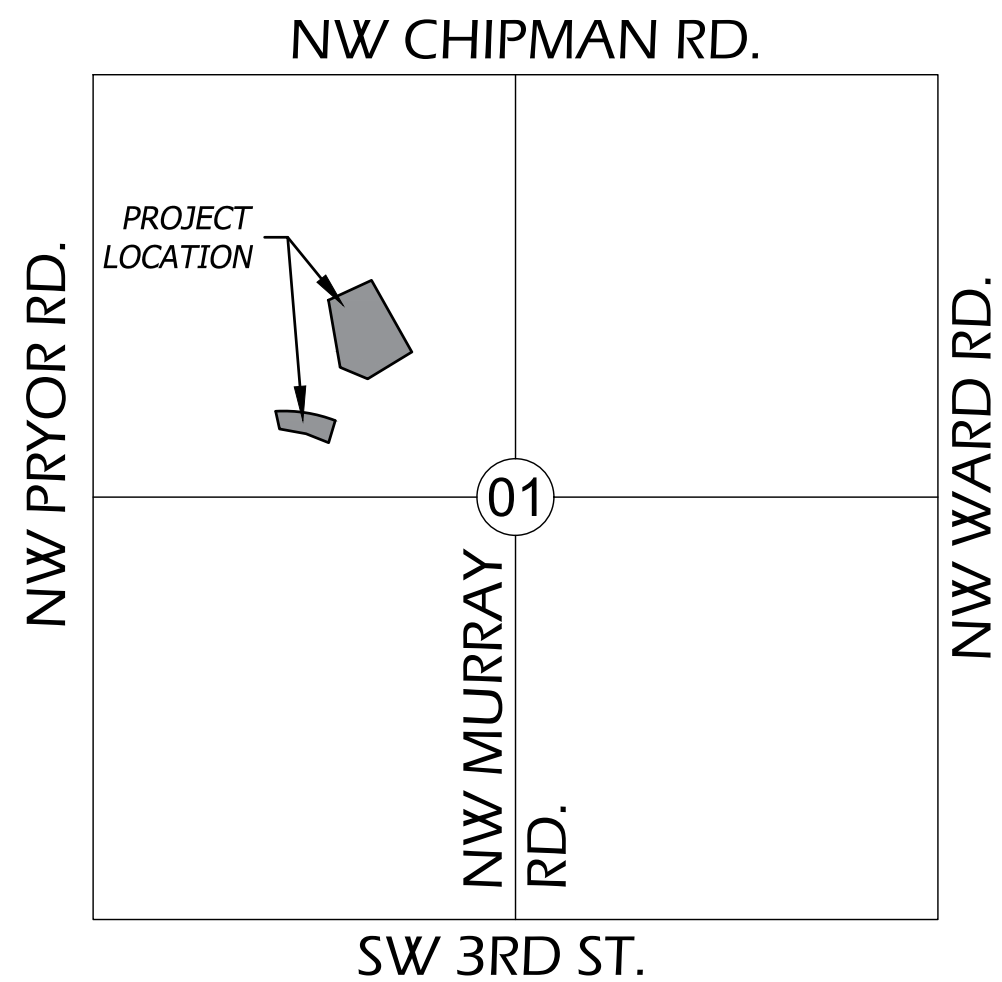


May 05, 2021 11:03am Plotted By: scott.tanner V:\028800--John Knox Village Ph II\04--DWG\Eng\Sheet\PP\028800--SHTS--COVER.dwg Layout: Cover Sheet



VICINITY MAP
SEC 01-- TWP 47N-- RNG 32W
NOT TO SCALE

UTILITY CONTACTS CITY OF LEE'S SUMMIT, MO

PLANNING AND DEVELOPMENT
CITY HALL
JOSH JOHNSON
220 SE GREEN STREET
LEE'S SUMMIT, MO 64063
TEL: (816) 969-1600
FAX: (816) 969-1619

PUBLIC WORKS
CITY HALL
220 SE GREEN STREET
LEE'S SUMMIT, MO 64063
TEL: (816) 969-1800
FAX: (816) 969-1809

LEE'S SUMMIT FIRE DEPARTMENT
207 SE DOUGLAS ROAD
LEE'S SUMMIT, MO 64063
TEL: (816) 969-1300

TELEPHONE COMPANY
AT&T
TEL: (800) 464-7928

CODES ADMINISTRATION
CITY HALL
220 SE GREEN STREET
LEE'S SUMMIT, MO 64063
TEL: (816) 969-1200
FAX: (816) 969-1201

WATER UTILITIES
CITY HALL
1200 SE HAMBLEN RD
LEE'S SUMMIT, MO 64063
TEL: (816) 969-1900
FAX: (816) 969-1935

ELECTRIC COMPANY
EVERGY
TEL: (888) 471-5275

GAS COMPANY
MISSOURI GAS ENERGY
TEL: (816) 756-5252

All existing utility locations shown are approximate only and are not guaranteed to be accurate or all inclusive. Contractor shall be responsible for contacting all utility companies and verifying the actual field locations of all utilities prior to any construction activity. Contractor shall keep all utility locations current. Utilities damaged through the negligence of the contractor to obtain the proper field locations shall be the responsibility of the contractor to repair or replace at their expense and at the direction of the utility company. The contractor shall pothole and survey all utility crossings prior to construction of any portion of storm sewer, sanitary sewer laterals, underdrains, conduit and any other subsurface element of the project. The survey information shall be forwarded to the project engineer for review. The contractor shall not begin construction on any subsurface element on the project without the approval of the project engineer. Utility coordination, potholing/surveying shall be subsidiary to other bid items.

Dig Safely. 811
Missouri One-Call
1-800-344-7483

CITY OF LEE'S SUMMIT, MISSOURI

JOHN KNOX VILLAGE MEADOWS

PUBLIC WATER MAIN IMPROVEMENTS

CITY PROJECT NO. PL2021150



VICINITY MAP
Not to Scale

BENCHMARKS / CONTROL POINTS (DATUM: NAVD88)

BM/CP #5002
SET CUT "+" ± 6" OF CONCRETE SIDEWALK IN EAST CURB
RETURN, NORTH SIDE OF NORTHWEST O'BRIEN ROAD
NORTH = 1002910.185
EAST = 2814693.406
ELEVATION = 963.93

BM/CP #13314
SET CUT "+" IN CONCRETE SIDEWALK, SOUTHWEST
CORNER OF NORTHWEST MOORE STREET &
NORTHWEST HOPE LANE (NOT SHOWN HEREON)
NORTH = 1003090.460
EAST = 2815069.800
ELEVATION = 974.62

BM/CP #13315
SET CUT "+" IN CONCRETE SIDEWALK, NORTHEAST
CORNER OF NORTHWEST O'BRIEN ROAD &
NORTHWEST MOORE STREET (NOT SHOWN HEREON)
NORTH = 1002830.710
EAST = 2814916.010
ELEVATION = 974.65

Sheet List Table	
Sheet Number	Sheet Title
1	COVER SHEET
2	OVERALL WATER MAIN PLAN
3	WATER MAIN PLAN & PROFILE
4	WATER MAIN DETAILS
5	WATER MAIN DETAILS 2

PREPARED & SUBMITTED BY:

BHC RHODES
OVERLAND PARK, KANSAS
ERIC BYRD, P.E.

05/05/2021
DATE

APPROVED:

BY THE CITY OF LEE'S SUMMIT, MISSOURI.

CITY ENGINEER

DATE

PUBLIC WATER MAIN IMPROVEMENTS
JOHN KNOX VILLAGE MEADOWS
LEE'S SUMMIT, MO 64081

COVER SHEET

Design: SKT Drawn: SKT
Checked: ERB
Issue Date: 05/04/2021
Project Number: 028800

1

Prepared For:

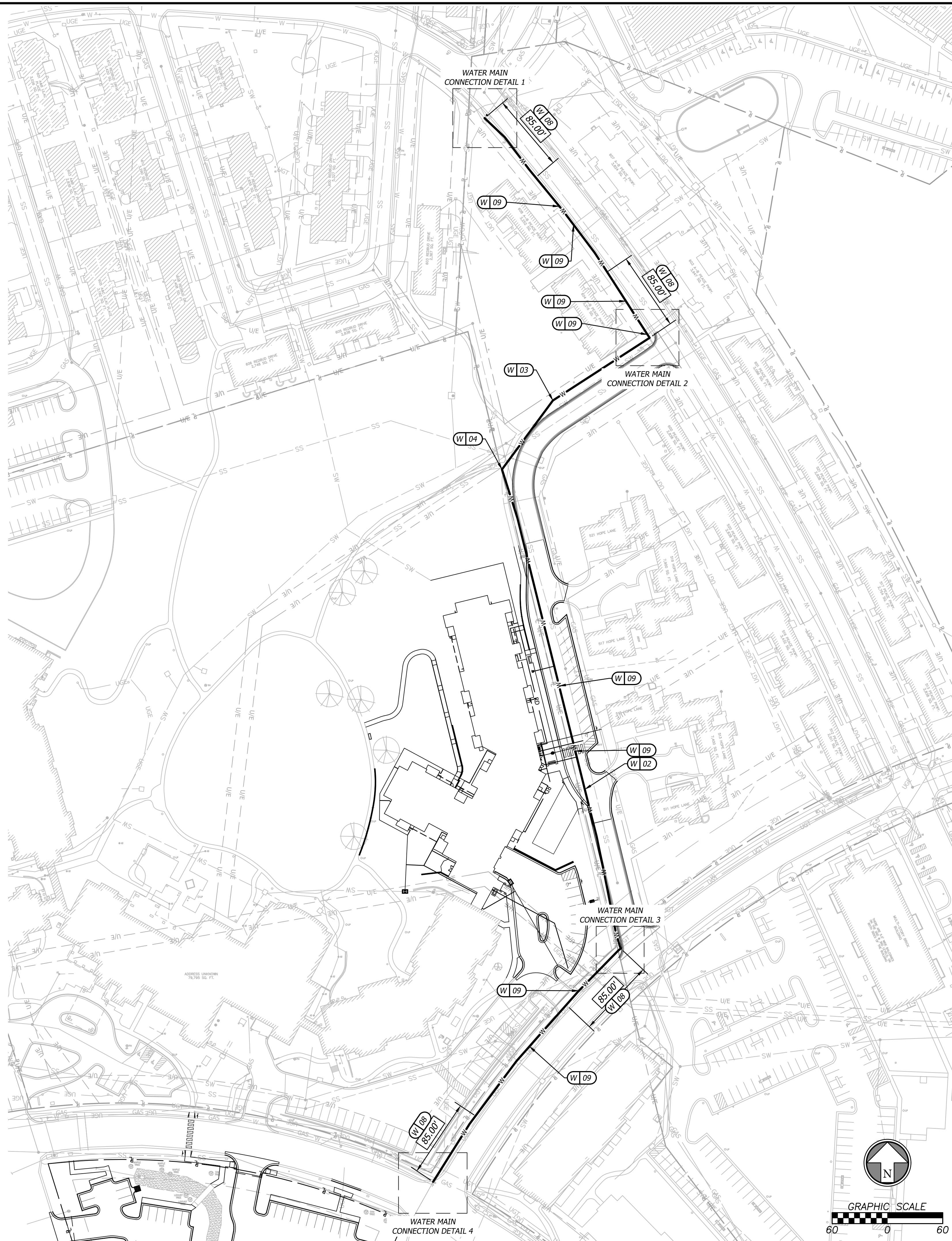
JOHN KNOX VILLAGE

1001 NW CHIPMAN RD.
LEE'S SUMMIT, MO 64081

816-251-8000



Rev. Date Description By App.



UTILITY CONSTRUCTION NOTES

W - WATER SERVICE INFORMATION - CITY OF LEE'S SUMMIT

- 01 INSTALL 12"x6" REDUCER.
02 REPLACE 1,380 LF OF EXISTING 6" WATER MAIN WITH 12" C900 WATER
MAIN. INSTALL AT A MINIMUM DEPTH OF 42".
03 INSTALL 12" 22.5° BEND WITH THRUST BLOCKING.
04 INSTALL 12" 60° BEND WITH THRUST BLOCKING.
05 INSTALL 12"x8" TEE WITH THRUST BLOCKING. SEE WATER MAIN NOTE 1.
06 INSTALL 12"x12" TEE WITH THRUST BLOCKING. SEE WATER MAIN NOTE 1.
07 INSTALL 12"x8" CROSS. SEE WATER MAIN NOTE 1.
08 **85 LF OF PIPE TO BE JOINT RESTRAINED.**
09 APPROXIMATE LOCATION OF EXISTING SERVICE CONNECTION. SEE DETAIL
WAT-11 ON SHEET 4.
10 EXISTING VALVE TO REMAIN.
11 INSTALL 12" BUTTERFLY VALVE.
12 INSTALL 8" GATE VALVE.

UTILITY GENERAL NOTES

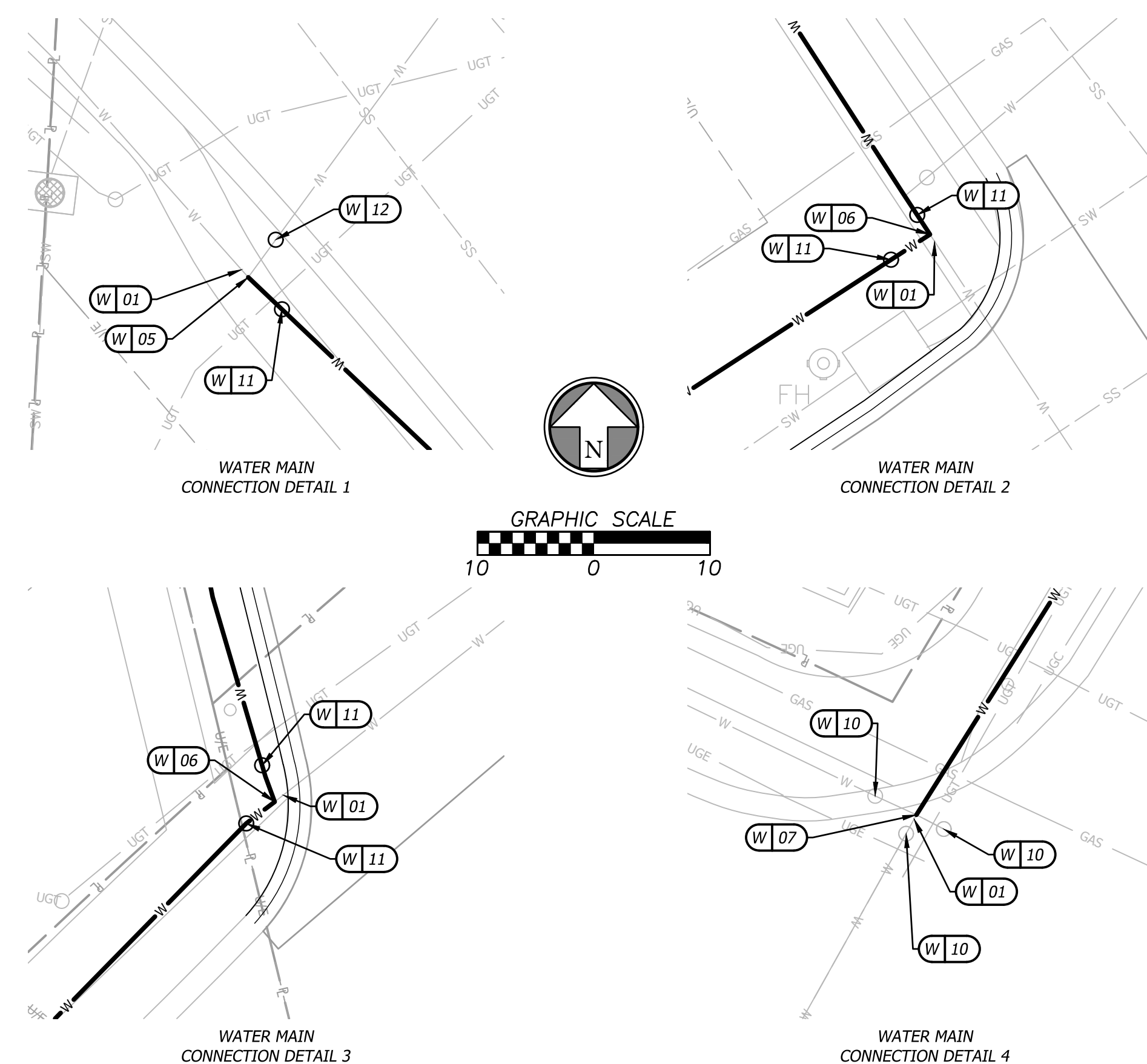
1. CONTRACTOR SHALL REFER TO ALL SPECIFICATIONS, GUIDELINES, AND INSTALLATION DRAWINGS FROM THE CITY OF LEE'S SUMMIT, EVERGY, AND MISSOURI GAS ENERGY FOR THE INSTALLATION OF ALL SERVICE LINES.
2. CONTRACTOR TO ENSURE 18" MINIMUM SEPARATION BETWEEN WATER MAIN AND STORM/SANITARY LINES AT CROSSINGS PER LEE'S SUMMIT DESIGN STANDARDS. CONTRACTOR TO CALL CIVIL IF ANY CONFLICTS BETWEEN UTILITIES ARE FOUND.
3. EXISTING WATER MAIN ALONG THE EXTENT OF THE NEW WATER MAIN TO BE ABANDONED IN PLACE.
4. CONTRACTOR TO RESTORE EXISTING CONDITIONS IF DEMOLISHED/DAMAGED DURING CONSTRUCTION TO MEET CITY OF LEE'S SUMMIT STANDARDS.
 - 4.1. REFER TO DETAILS ON SHEET 5 FOR RESTORATION DETAILS
5. RESTRAINED JOINT PIPING SHALL BE INSTALLED PER MANUFACTURER SPECIFICATIONS.

JOINT RESTRAINT NOTE

1. AT ALL NEW CROSS AND TEE JOINT CONNECTIONS, THE CONTRACTOR SHALL RESTRAIN ALL JOINTS CONNECTING THE REDUCER TO THE CONNECTION, ALL JOINTS CONNECTING THE CONNECTION TO THE RESTRAINED JOINT PIPE, AND ALL VALVES TO THE FITTINGS THEY ARE NEAR.

SERVICE LINE RECONNECTION NOTE

1. CONTRACTOR SHALL RECONNECT ALL EXISTING WATER SERVICE LINES THAT ARE DISCONNECTED DURING THE WATER MAIN DEMOLITION AND CONSTRUCTION. SEE DETAIL WAT-11 ON SHEET 4.



PUBLIC WATER MAIN IMPROVEMENTS JOHN KNOX VILLAGE MEADOWS LEE'S SUMMIT, MO 64081	Design:	SKT	Drawn:	SKT
	Checked:			ERB
	Issue Date:	05/04/2021		
	Project Number:	028800		
	2			

OVERALL WATER MAIN PLAN

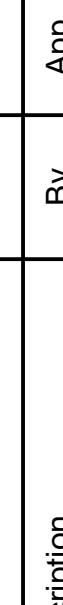
Prepared For:

JOHN KNOX VILLAGE


1001 NW CHIPMAN RD,

LEE'S SUMMIT, MO 64081

816-251-8000



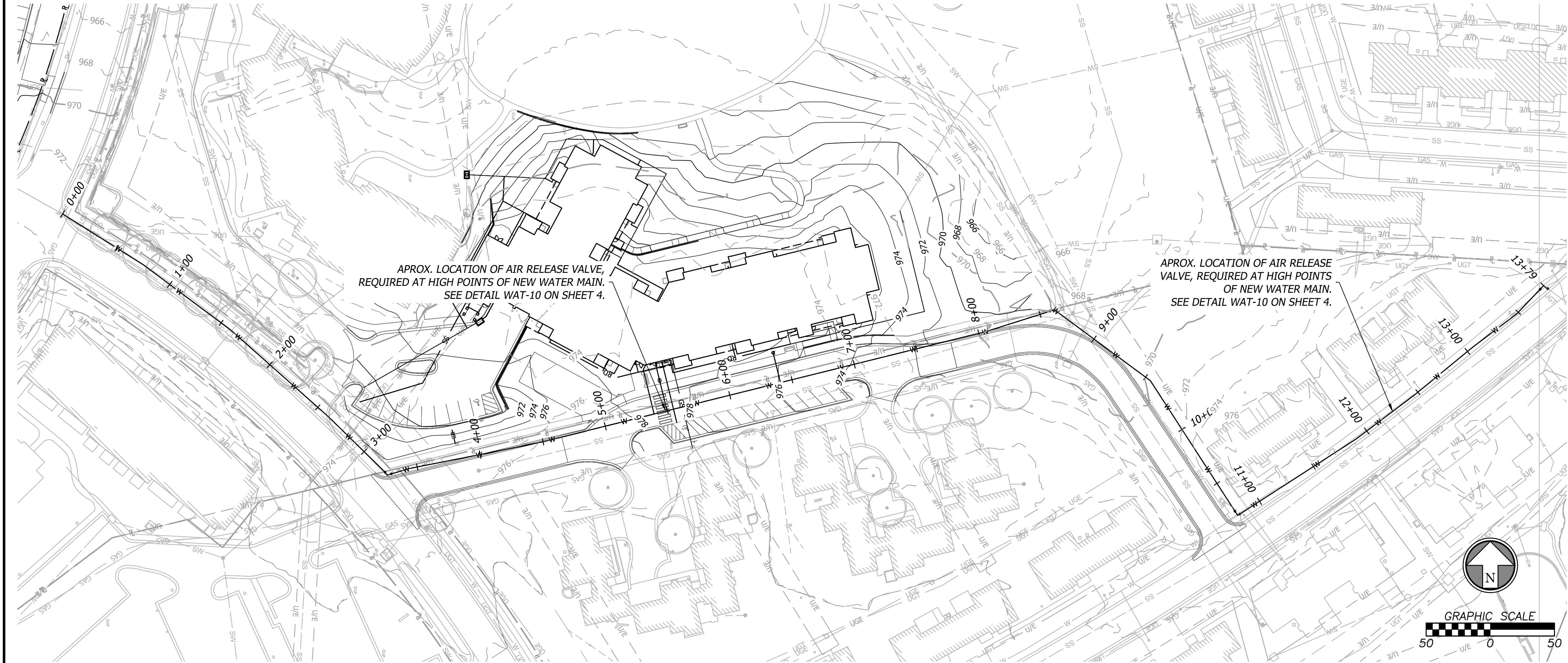
ERIC BYRNE
PE-2018013633
05/05/2021



BIG

CIVIL ENGINEERING / SURVEYING / UTILITIES
7101 College Blvd., Suite 400
Overland Park, Kansas 66210
Phone: 913-241-9700
Fax: 913-241-9701
www.big-engineers.com
BIG is a Division of The Jacobs Group, Inc.

May 05, 2021 -- 11:05am Plotted By: scott.tanner V:\028800--John Knox Village Ph II\04--DWG\Eng\Sheet\PP\028800--SHTS--WMAin.dwg Layout: Plan & Profile



PHASING NOTES

1. IN ORDER TO LIMIT THE AMOUNT OF TIME WATER USERS ARE WITHOUT WATER, THE CONSTRUCTION OF THIS WATER MAIN SHALL BE PHASED AS FOLLOWS:
 - PHASE 1 - STA. 0+00.00 TO STA. 3+26.00
 - PHASE 2 - STA. 3+26.00 TO STA. 10+80.00
 - PHASE 3 - STA. 10+80.00 TO STA. 13+79.00
2. CONTRACTOR TO PROVIDE SUFFICIENT NOTICE TO WATER USERS PRIOR TO SHUT DOWN OF THEIR SERVICE.
3. CONTRACTOR TO NOTIFY DEVELOPMENT SERVICES INSPECTIONS PRIOR TO PERFORMING ANY SHUT-DOWNS.
4. THE CITY OF LEE'S SUMMIT IS THE ONLY PARTY ALLOWED TO TURN VALVES ON OR OFF.

WATER MAIN NOTES

1. CONTRACTOR TO CONTACT GENE WILLIAMS WITH THE CITY OF LEE'S SUMMIT PRIOR TO PLACEMENT OF AIR RELEASE VALVES. THEY WILL NEED TO BE REVIEWED BY THE WATER UTILITIES DEPARTMENT FOR PLACEMENT.



Prepared For:
JOHN KNOX VILLAGE
1001 NW CHIPMAN RD.
LEE'S SUMMIT, MO 64081
816-251-8000

PUBLIC WATER MAIN IMPROVEMENTS
JOHN KNOX VILLAGE MEADOWS
LEE'S SUMMIT, MO 64081
WATER MAIN PLAN & PROFILE

Design: SKT Drawn: SKT
Checked: ERB
Issue Date: 05/04/2021
Project Number: 028800

NOTES:


1. ALL BENDS WITHOUT RESTRAINED JOINTS SHALL HAVE CONCRETE THRUST BLOCKS INSTALLED FOR RESTRAINT.
2. MEGA LUGS MAY BE USED ONLY IN CONJUNCTION WITH CONCRETE THRUST BLOCKING.
3. BEARING AREA MUST BE AGAINST UNDISTURBED SOIL.
4. DO NOT COVER JOINTS OR BOLTS (WHERE APPLICABLE) WITH CONCRETE.

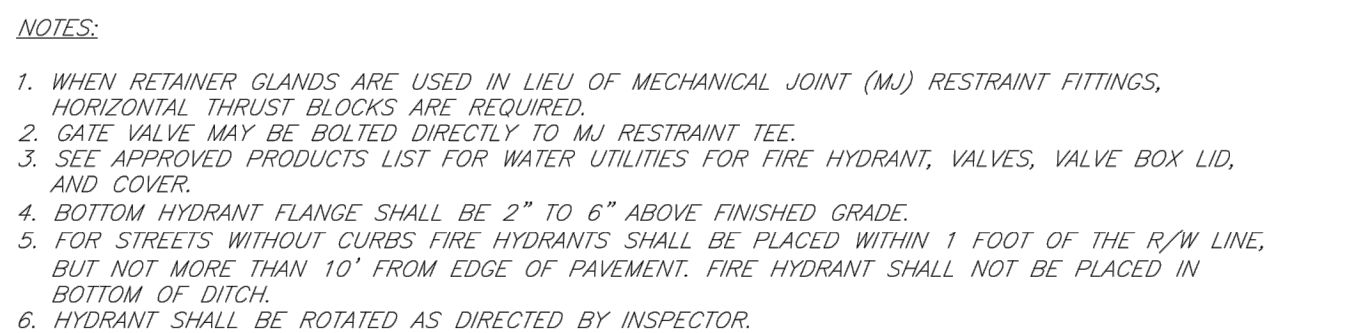


NOTES:

1. ALL BENDS WITHOUT RESTRAINED JOINTS SHALL HAVE CONCRETE THRUST BLOCKS INSTALLED FOR RESTRAINT.
2. MEGA LUGS MAY BE USED ONLY IN CONJUNCTION WITH CONCRETE THRUST BLOCKING.
3. BEARING MUST BE AGAINST UNDISTURBED SOIL.
4. DO NOT COVER JOINTS OR BOLTS (WHERE APPLICABLE) WITH CONCRETE.



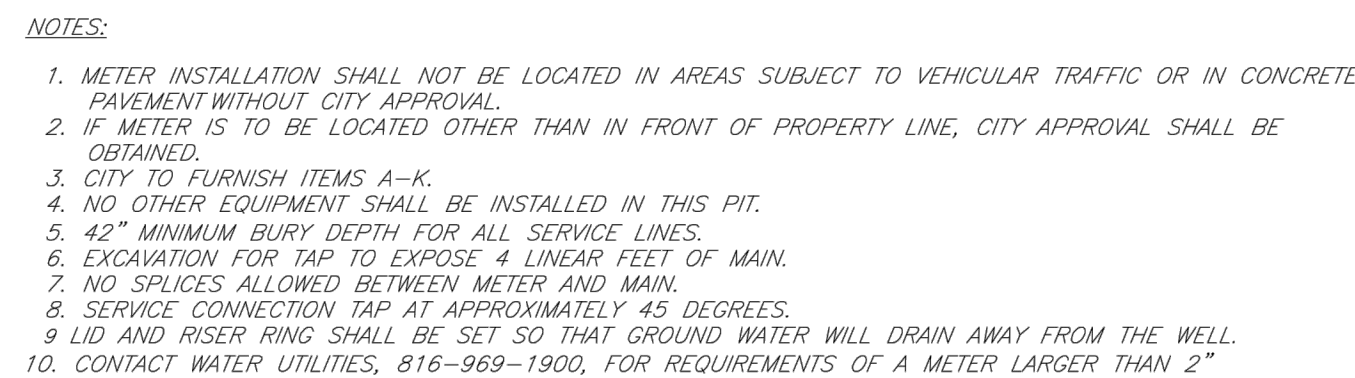
	<p align="center">LEE'S SUMMIT MISSOURI</p> <p align="center">PUBLIC WORKS ENGINEERING DIVISION 2202 SE GREEN STREET LEE'S SUMMIT, MO 64063</p>	<p>Date: 02/13</p> <p>Drawn By: JN</p> <p>Checked By: DL</p> <p>FILE: WAT-3</p>
	<p>STRADDLE BLOCK</p>	<p>Rev: 1/14</p> <p>Rev:</p>



	<p align="center">LEE'S SUMMIT MISSOURI</p> <p align="center">PUBLIC WORKS ENGINEERING DIVISION 1220 S. GREEN STREET LEE'S SUMMIT, MO 64063</p>		Date: 02/13 Drawn By: JN Checked By: DL FILE: WAT-7
	<p align="center">HYDRANT INSTALLATION – STRAIGHT SET</p>		Rev: 1/14 Rev:



	<p align="center">LEE'S SUMMIT MISSOURI</p> <p align="center">PUBLIC WORKS ENGINEERING DIVISION 220 SE GREEN STREET LEE'S SUMMIT, MO 64063</p>	<p>Date: 04/17</p> <p>Drawn By: MJF</p> <p>Checked By: DL</p>
	<p align="center">AIR RELEASE ASSEMBLY</p>	<p align="center">WAT-10</p>



	<p align="center">LEE'S SUMMIT MISSOURI</p> <p align="center">PUBLIC WORKS ENGINEERING DIVISION 220 SE GREEN STREET LEE'S SUMMIT, MO 64063</p>	<p>Date: 02/13</p> <p>Drawn By: JN</p> <p>Checked By: DL</p> <p>FILE: NAT-11</p>
	<p align="center">SERVICE CONNECTION/METER WELL</p>	<p>Rev: 1/14</p>

[illegible]

Prepared For: **JOHN KNOX VILLAGE**
1001 NW CHIPMAN RD.
LEE'S SUMMIT, MO 64081
816-251-8000

**PUBLIC WATER MAIN IMPROVEMENTS
JOHN KNOX VILLAGE MEADOWS
LEE'S SUMMIT, MO 64081**

WATER MAIN DETAILS

Design: SKT	Drawn: SKT
Checked:	ERB
Issue Date:	05/04/2021
Project Number:	028800

4



1. ASPHALT CAP OR FULL DEPTH CONCRETE SHALL BE DETERMINED BY CITY INSPECTOR.



PUBLIC WORKS ENGINEERING DIVISION | 220 SE GREEN STREET | LEE'S SUMMIT, MO 64063

TRENCHING/PATCHING ROADWAYS DETAIL

Date: 04/17

Drawn By: MJF

Checked By: DL

GEN-5



1. THE CONTRACTOR SHALL PROVIDE ADEQUATE OVERLAP OF PLATE ON ASPHALT TO ASSURE NO SLIPPING OF PLATE AND NO COLLAPSING OF TRENCH.
2. ALL PLATES SHALL BE ANCHORED SO PLATES DO NOT MOVE OR SHIFT UNDER TRAFFIC.



PUBLIC WORKS ENGINEERING DIVISION | 220 SE GREEN STREET | LEE'S SUMMIT, MO 64063

TRENCHING PLATE DETAIL

Date: 04/17

Drawn By: MJF

Checked By: D

GEN-6

JOHN KNOX VILLAGE

1001 NW CHIPMAN RD.
LEE'S SUMMIT, MO 64081

816-251-8000



7101 College Blvd., Suite 400
Overland Park, Kansas 66210

800 is a trademark of Interstate Recording & Service, P.A.
P: (716) 666-1300

[illegible]