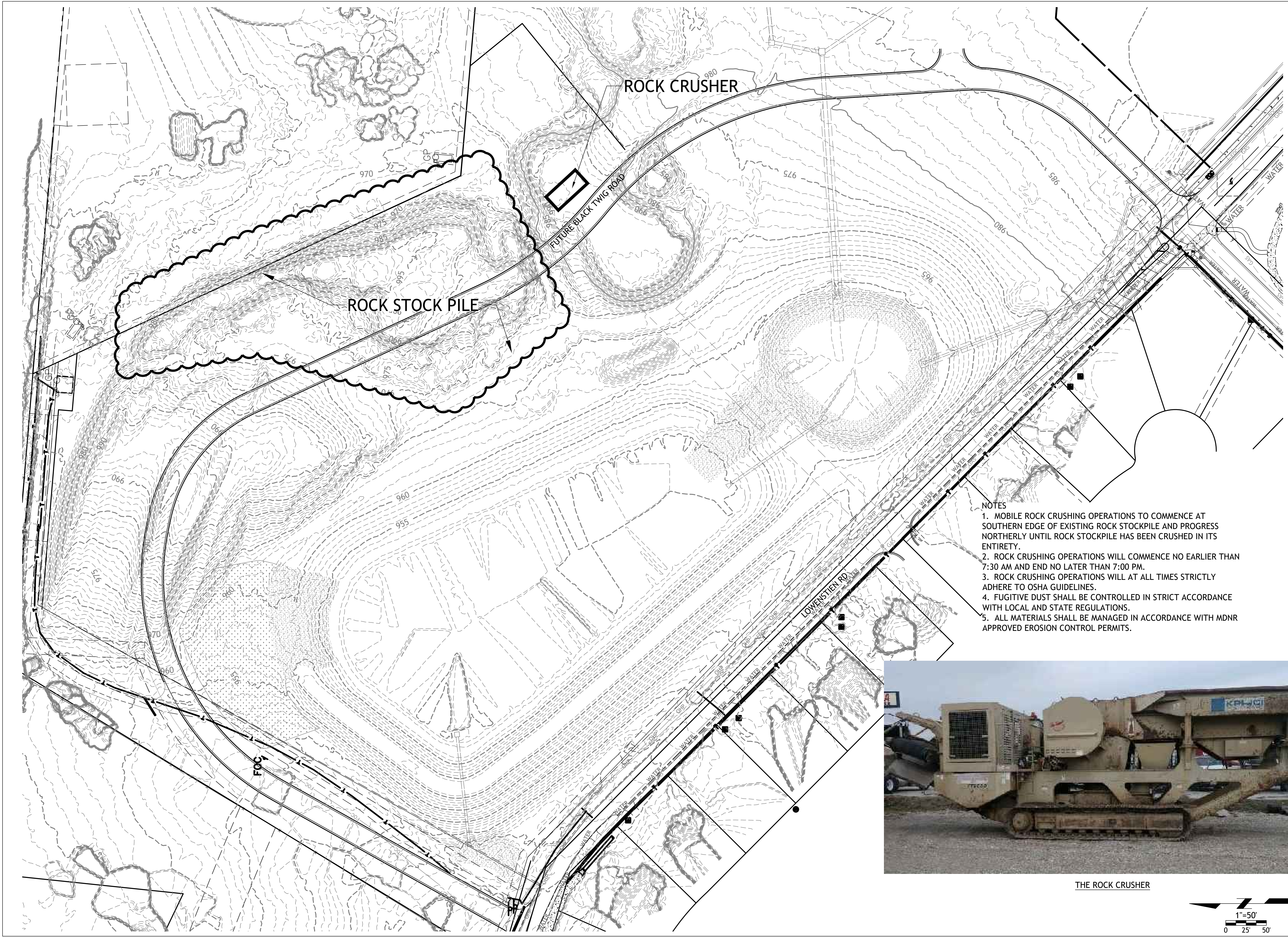


Drawings and/or Specifications are original proprietary work and property of the Engineer and intended specifically for this project. Use of items contained herein without consent of the Engineer is prohibited. Drawings illustrate best information available to the Engineer. Field verification of actual elements, conditions, and dimensions is required.

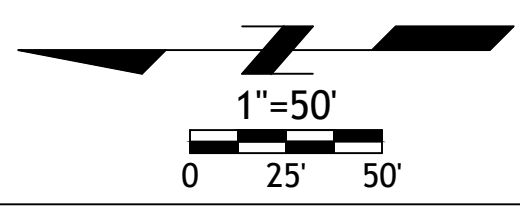
Revisions



- NOTES
1. MOBILE ROCK CRUSHING OPERATIONS TO COMMENCE AT SOUTHERN EDGE OF EXISTING ROCK STOCKPILE AND PROGRESS NORTHERLY UNTIL ROCK STOCKPILE HAS BEEN CRUSHED IN ITS ENTIRETY.
 2. ROCK CRUSHING OPERATIONS WILL COMMENCE NO EARLIER THAN 7:30 AM AND END NO LATER THAN 7:00 PM.
 3. ROCK CRUSHING OPERATIONS WILL AT ALL TIMES STRICTLY ADHERE TO OSHA GUIDELINES.
 4. FUGITIVE DUST SHALL BE CONTROLLED IN STRICT ACCORDANCE WITH LOCAL AND STATE REGULATIONS.
 5. ALL MATERIALS SHALL BE MANAGED IN ACCORDANCE WITH MDNR APPROVED EROSION CONTROL PERMITS.



THE ROCK CRUSHER



STREETS OF WEST PRYOR
 LEES SUMMIT, MO