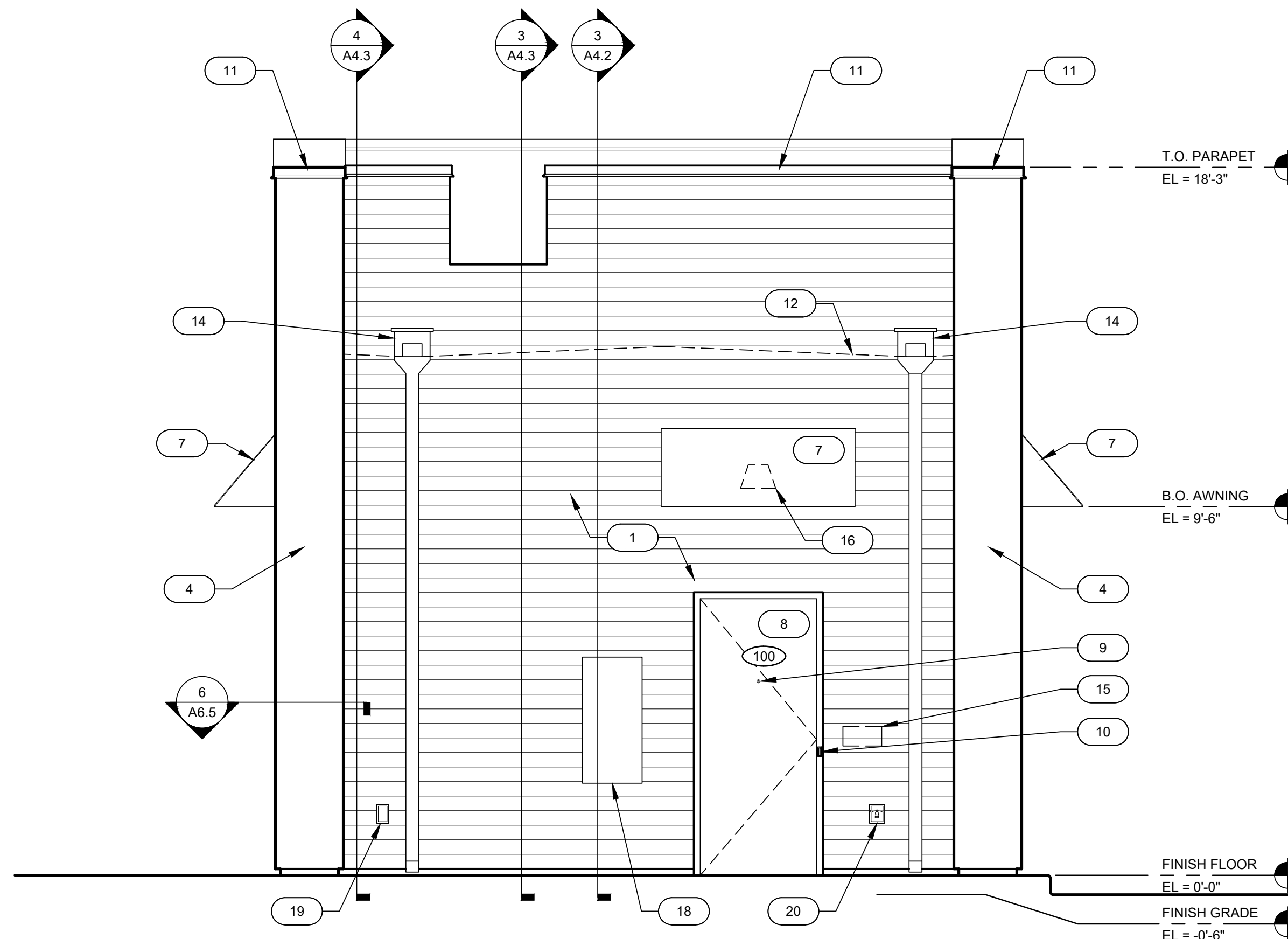


2 EXTERIOR ELEVATION - NORTH
SCALE: 3/8" = 1'-0"

SW 6992
Inkwell
Interior / Exterior
Location Number: 251-C4

SW 1015
Skyline Steel
Interior / Exterior
Location Number: 283-C3



1 EXTERIOR ELEVATION - EAST
SCALE: 3/8" = 1'-0"

KEYNOTES

1. HARDIE PLANK HZ10 LAP SIDING CEDARMILL 6-1/4". SEE HARDIE DETAIL SHEET A6.5 - COLOR: SHERWIN WILLIAMS SW6992 INKWELL EGG SHELL FINISH
2. HARDIE REVEAL PANEL SYSTEM WZ10 - SMOOTH FINISH, SEE HARDIE DETAIL SHEET A6.5 - COLOR: SW 1015 SKYLINE STEEL
3. 3 1/2" HARDIE TRIM, SEE HARDIE DETAIL SHEET A6.5 - COLOR: SHERWIN WILLIAMS SW6992 INKWELL EGG SHELL FINISH
4. 20 GAUGE METAL ACCENTS AND SOFFITS - COLOR: BLACK
5. INSULATED DARK BRONZE ALUMINUM WINDOWS WITH DUAL PANE TEMPERED GLASS
6. QUICKSERVE 48X48 WINDOW - COLOR: DARK BRONZE
7. AWNING BY OTHERS - COLOR: RED
8. INSULATED HOLLOW METAL DOOR AND FRAME - COLOR: SHERWIN WILLIAMS SW6992 INKWELL EGG SHELL FINISH
9. PEEP HOLE, BY DOOR MANUFACTURER
10. DOOR BELL
11. 20 GAUGE METAL PARAPET CAP
12. LINE OF ROOF BEYOND
13. ROOF TOP UNIT BEYOND, SEE MECHANICAL DRAWINGS
14. ROOF SCUPPER AND DOWNSPOUT, SEE DETAIL 8/A6.3
15. MAILBOX BY OWNER
16. WALL MOUNTED LIGHT FIXTURE, SEE ELECTRICAL DRAWINGS
17. LED LIGHT BAND, SEE ELECTRICAL DRAWINGS
18. SES PANEL, SEE ELECTRICAL DRAWINGS
19. ELECTRICAL OUTLETS, SEE ELECTRICAL DRAWINGS
20. HOSE BIBB, SEE PLUMBING DRAWINGS
21. SIGNAGE BY OTHERS, UNDER A SEPARATE PERMIT
22. SNAP FRAME DISPLAY CASE

KATHELEEN ANN WARMAN - ARCHITECT
MO # A5819

Scooter's Coffee Drive-Thru
707 NE Rice Rd
Lee's Summit, MO

Loving Cup, LLC
dba Scooter's Coffee
200 NE Woods Chapel Rd
Lee's Summit, MO 64064

#	BY	DATE	SOURCE

DATE: 03.29.21
DESIGNED BY: KAW
DRAWN BY: JDE
APPROVED BY: KAW

SHEET NUMBER
A3.1
JOB NUMBER
5639-21

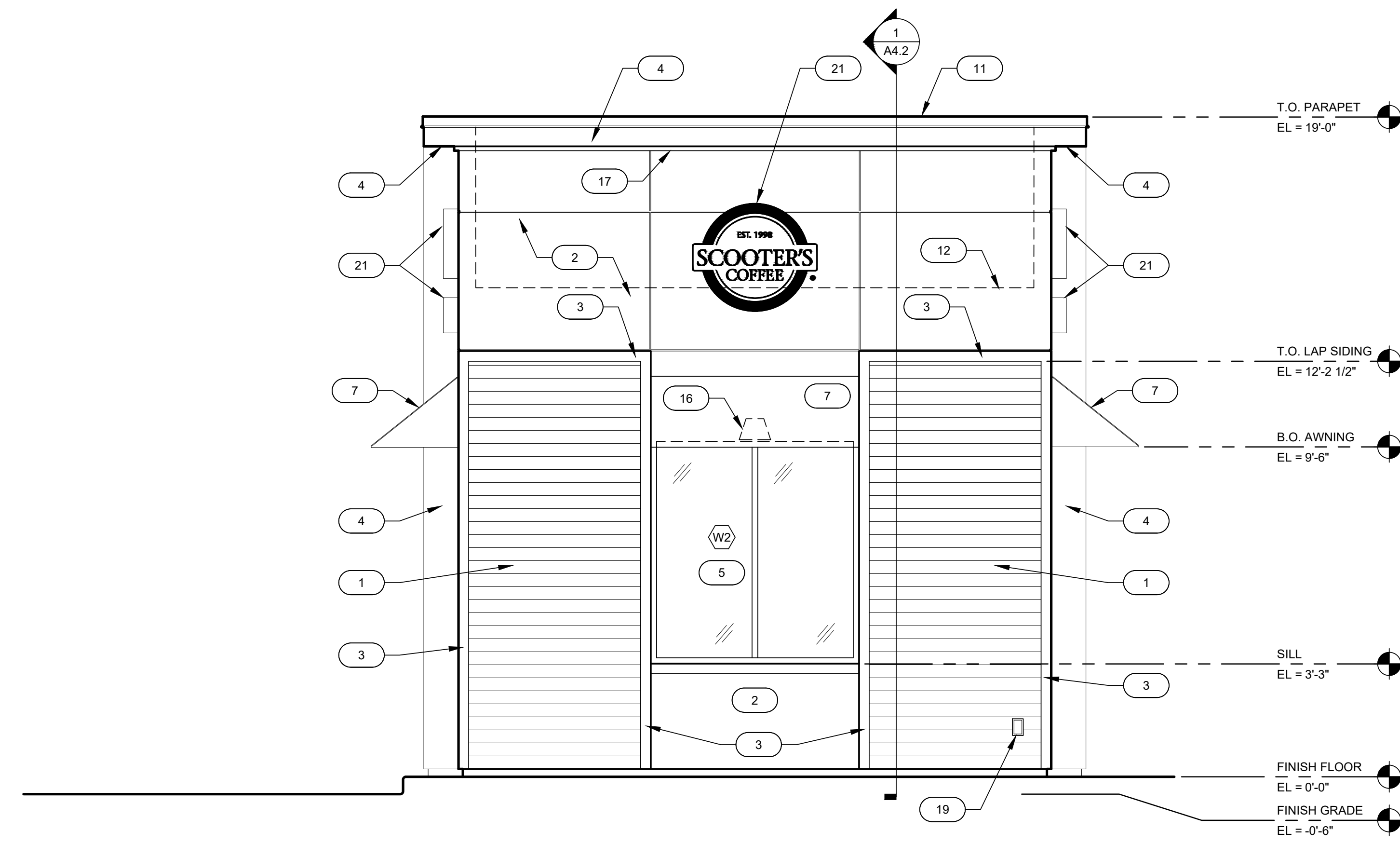
WARMAN ARCHITECTURE + DESIGN
1735 SWIFT AVE.
NORTH KANSAS CITY, MISSOURI 64116
V. 816.474.2233 F. 816.474.1051



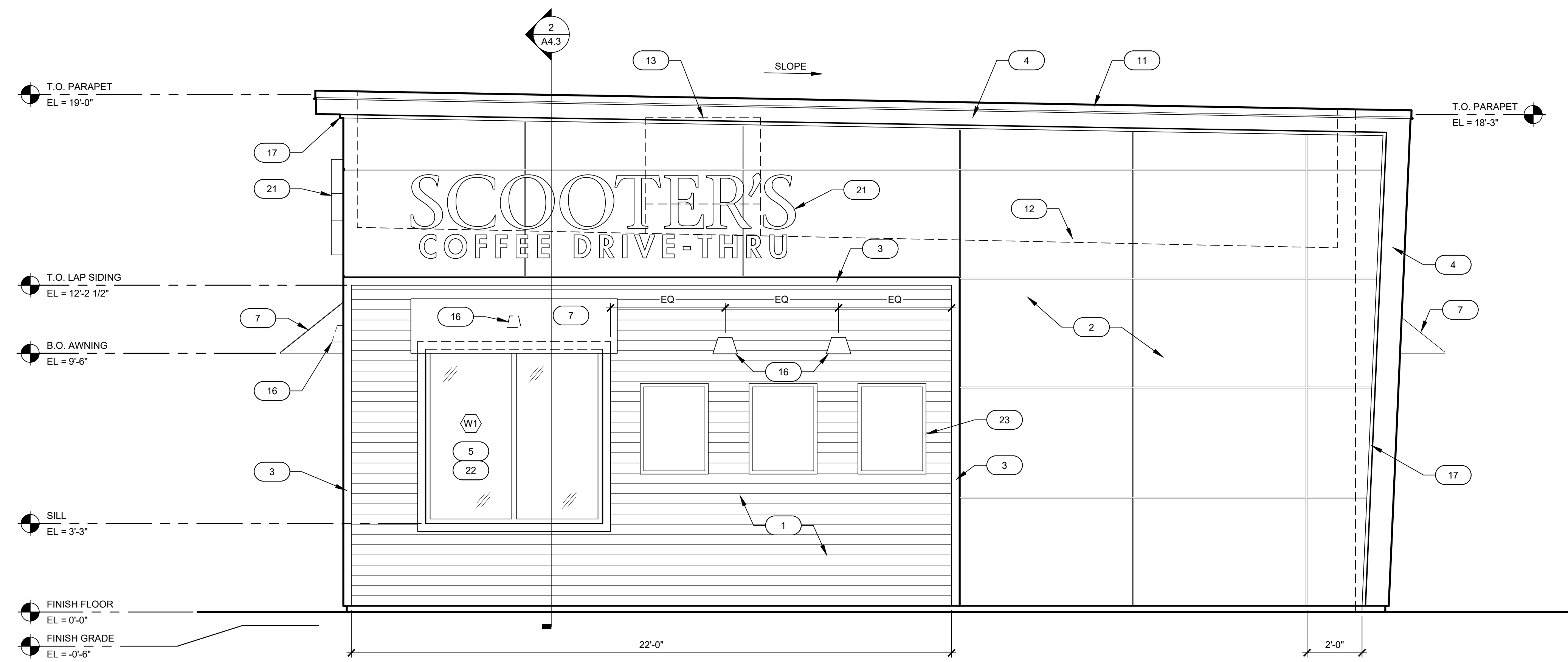
Missouri State Certificate of Authority #ARC 000745

KEYNOTES

1. HARDIE PLANK HZ10 LAP SIDING CEDARMILL 6-1/4". SEE HARDIE DETAIL SHEET A6.5 - COLOR: SHERWIN WILLIAMS SW6992 INKWELL EGG SHELL FINISH
2. HARDIE REVEAL PANEL SYSTEM WZ10 - SMOOTH FINISH. SEE HARDIE DETAIL SHEET A6.5 - COLOR: SW 1015 SKYLINE STEEL
3. 3 1/2" HARDIE TRIM. SEE HARDIE DETAIL SHEET A6.5 - COLOR: SHERWIN WILLIAMS SW6992 INKWELL EGG SHELL FINISH
4. 20 GAUGE METAL ACCENTS AND SOFFITS - COLOR: BLACK
5. INSULATED DARK BRONZE ALUMINUM WINDOWS WITH DUAL PANE TEMPERED GLASS
6. QUICKSERVE 48X48 WINDOW - COLOR: DARK BRONZE
7. AWNING BY OTHERS - COLOR: RED
8. INSULATED HOLLOW METAL DOOR AND FRAME - COLOR: SHERWIN WILLIAMS SW6992 INKWELL EGG SHELL FINISH
9. PEEP HOLE, BY DOOR MANUFACTURER
10. DOOR BELL
11. 20 GAUGE METAL PARAPET CAP
12. LINE OF ROOF BEYOND
13. ROOF TOP UNIT BEYOND, SEE MECHANICAL DRAWINGS
14. ROOF SCUPPER AND DOWNSPOUT, SEE DETAIL 8/A6.3
15. MAILBOX BY OWNER
16. WALL MOUNTED LIGHT FIXTURE, SEE ELECTRICAL DRAWINGS
17. LED LIGHT BAND, SEE ELECTRICAL DRAWINGS
18. SES PANEL, SEE ELECTRICAL DRAWINGS
19. ELECTRICAL OUTLETS, SEE ELECTRICAL DRAWINGS
20. HOSE BIBB, SEE PLUMBING DRAWINGS
21. SIGNAGE BY OTHERS, UNDER A SEPARATE PERMIT
22. SPANDREL GLASS
23. SNAP FRAME DISPLAY CASE



2 EXTERIOR ELEVATION - WEST
SCALE: 3/8" = 1'-0"



1 EXTERIOR ELEVATION - SOUTH
SCALE: 3/8" = 1'-0"

#	BY	DATE	SOURCE

DATE: 03.29.21
DESIGNED BY: KAW
DRAWN BY: JDE
APPROVED BY: KAW