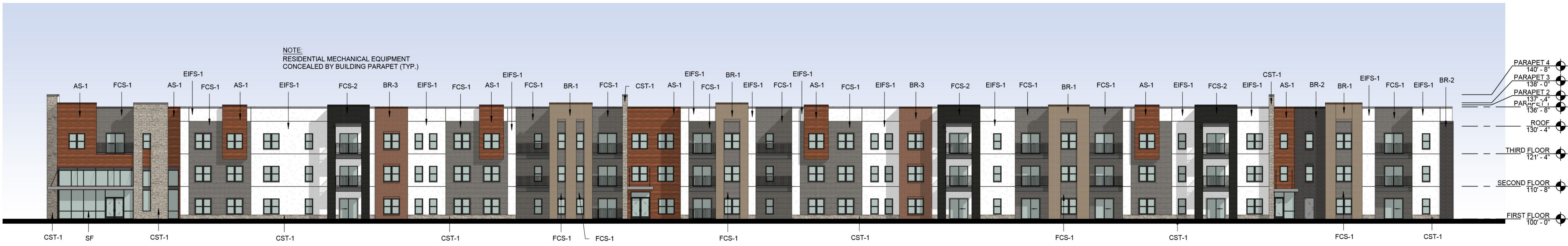
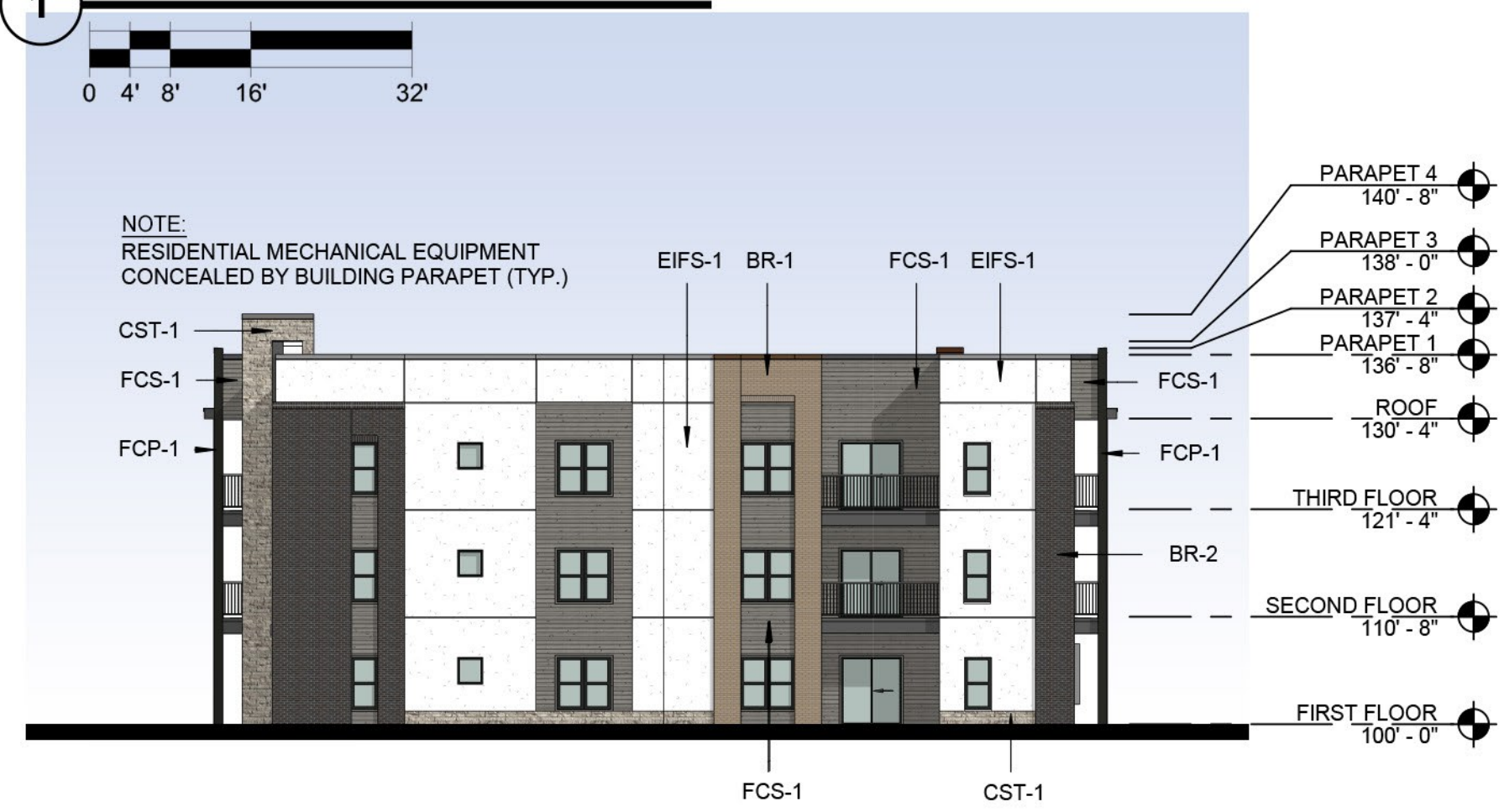


EXTERIOR MATERIAL LEGEND

(EIFS-1)	EIFS	MFR: DRYVIT, COLOR: MOONLIGHT, TEXTURE: SAND PEBBLE
(AS-1)	ALUMINUM SIDING	MFR: FASTPLANK SYSTEMS, SIZE: 4" COLOR: DARK CHERRY
(FCS-1)	FIBER CEMENT SIDING	MFR: JAMES HARDIE, SIZE: 6" COLOR: AGED PEWTER
(FCS-2)	FIBER CEMENT SIDING	MFR: JAMES HARDIE, SIZE: 6" COLOR: IRON GRAY
(BR-1)	BRICK	MFR: HEBRON, COLOR: SEA GRAY #6, SIZE: MODULAR
(BR-2)	BRICK	MFR: ENDICOTT, COLOR: DARK IRONSPOT, SIZE: MODULAR
(BR-3)	BRICK	MFR: ENDICOTT, COLOR: MAROON, SIZE: MODULAR, TEXTURE: SMOOTH
(CST-1)	CAST STONE	MFR: ELDERADO STONE, SERIES: LEDGECUT3, COLOR: BIRCH
(SF)	STOREFRONT	COLOR: BLACK



1 SOUTH ELEVATION



2 PARTIAL EAST ELEVATION (S)



4 PARTIAL EAST ELEVATION (N)



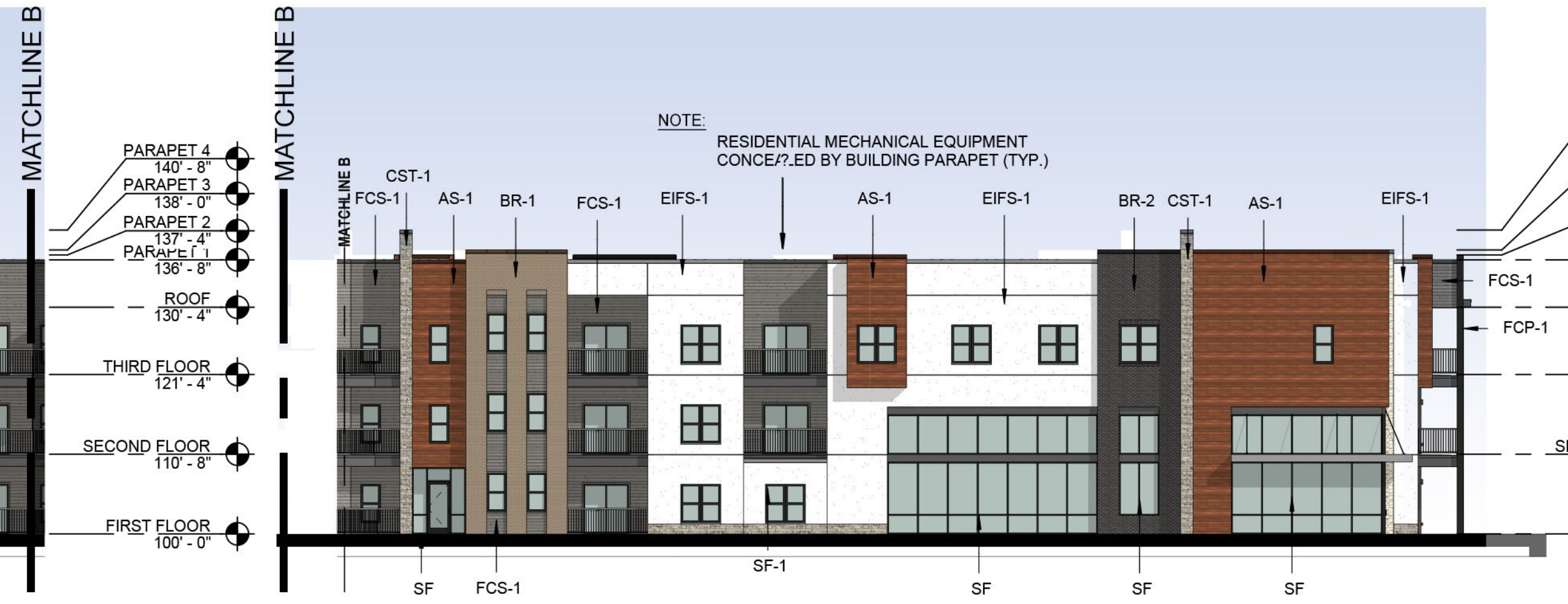
7 SOUTHWEST ELEVATION



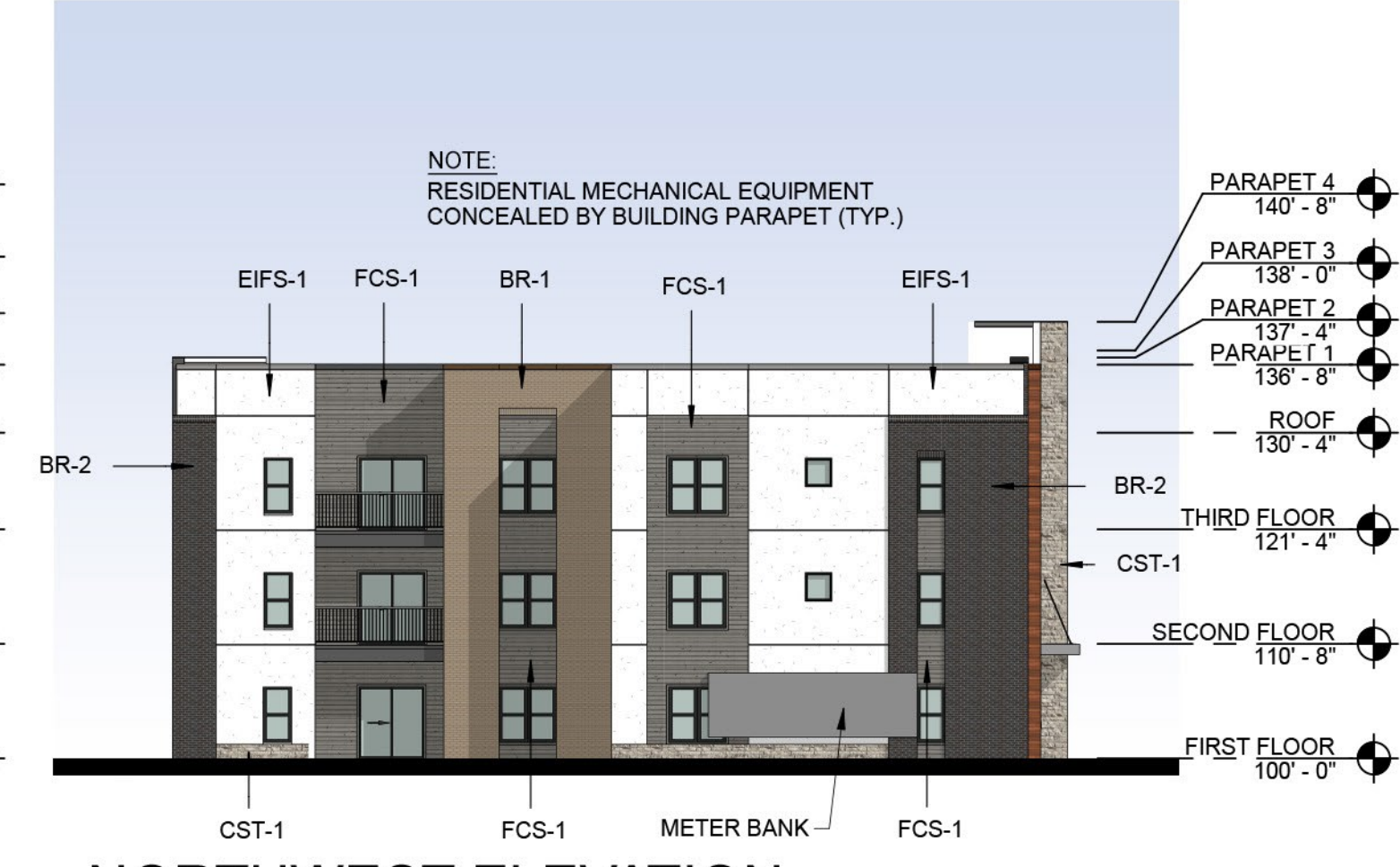
3 NORTH ELEVATION



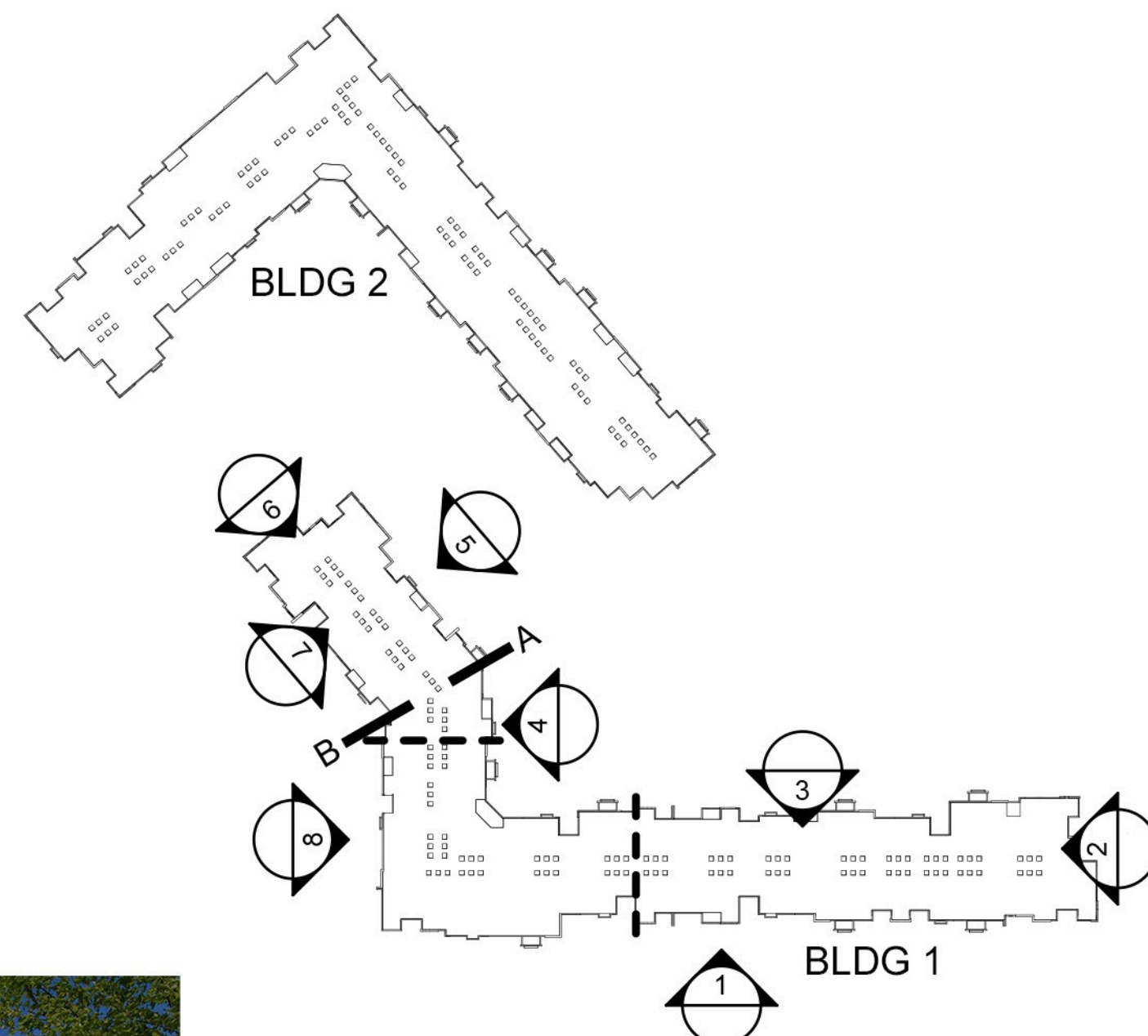
5 NORTHEAST ELEVATION



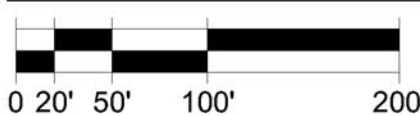
8 WEST ELEVATION



6 NORTHWEST ELEVATION



KEY PLAN

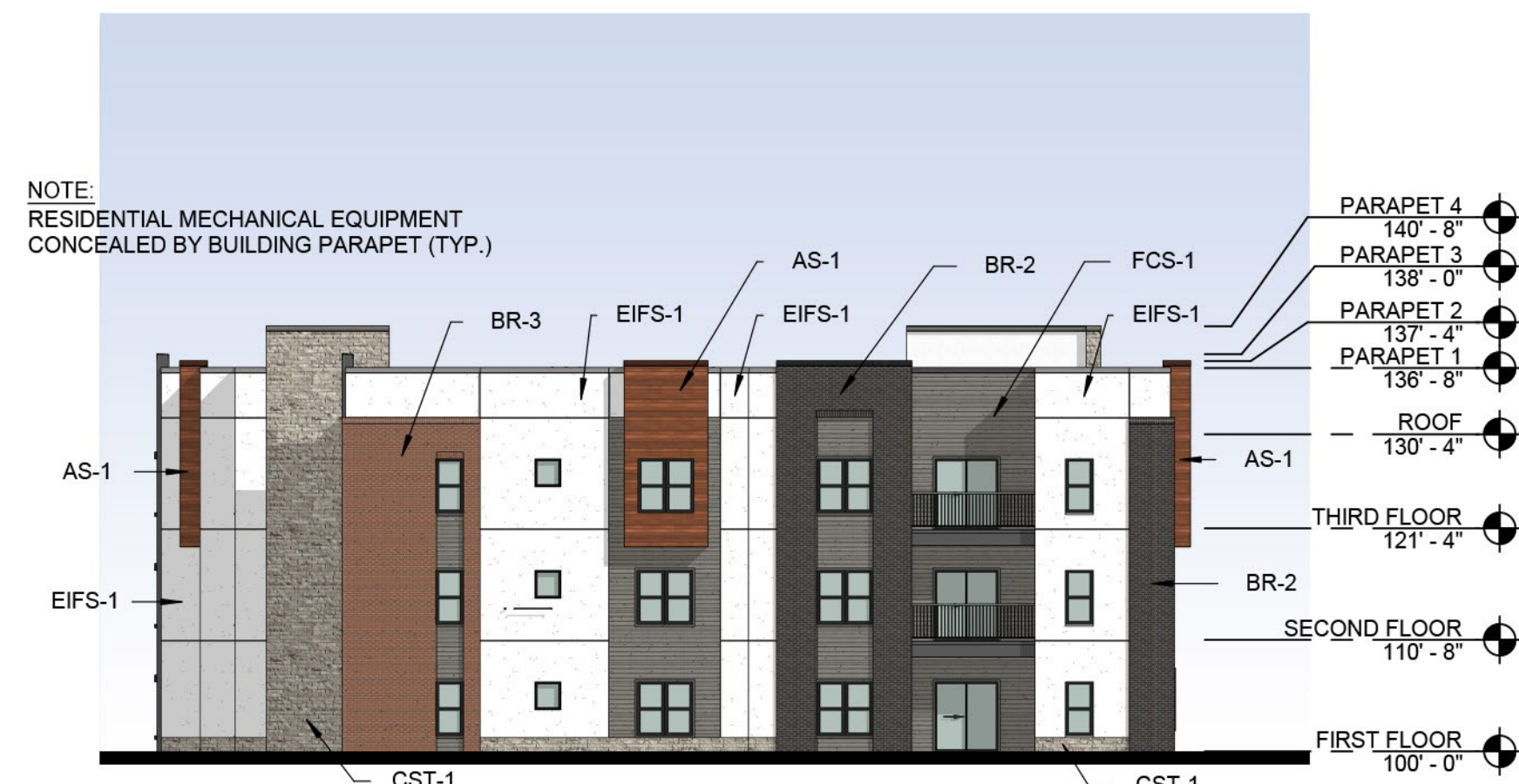


BUILDING PERSPECTIVE

BUILDING 1
SUMMIT at WEST PRYOR - PHASE II

LEE'S SUMMIT,
20-001

MISSOURI
03-10-2021



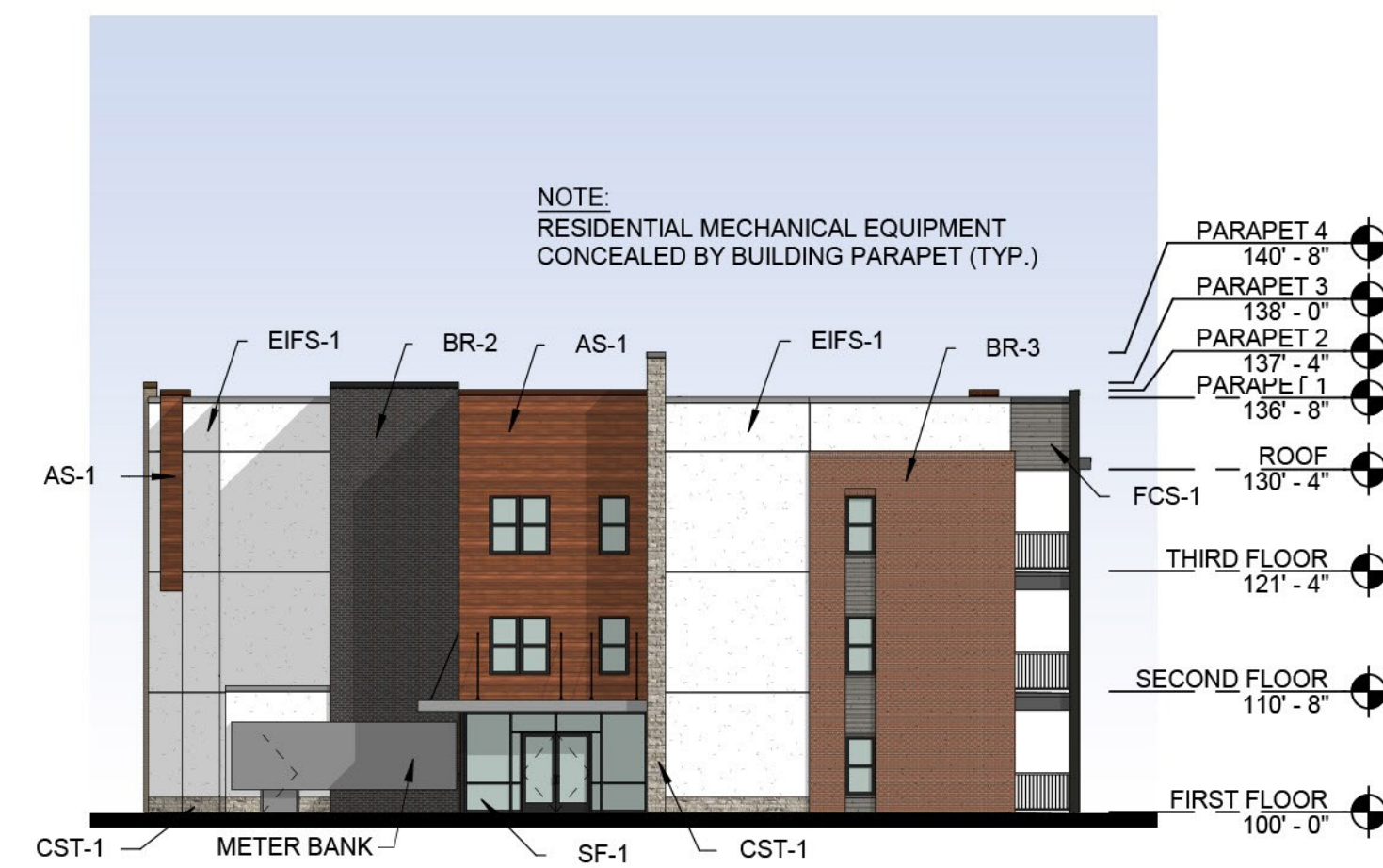
1 WEST ELEVATION (N)



2 WEST ELEVATION (S)



3 SOUTH ELEVATION (W)



4 SOUTH ELEVATION (E)

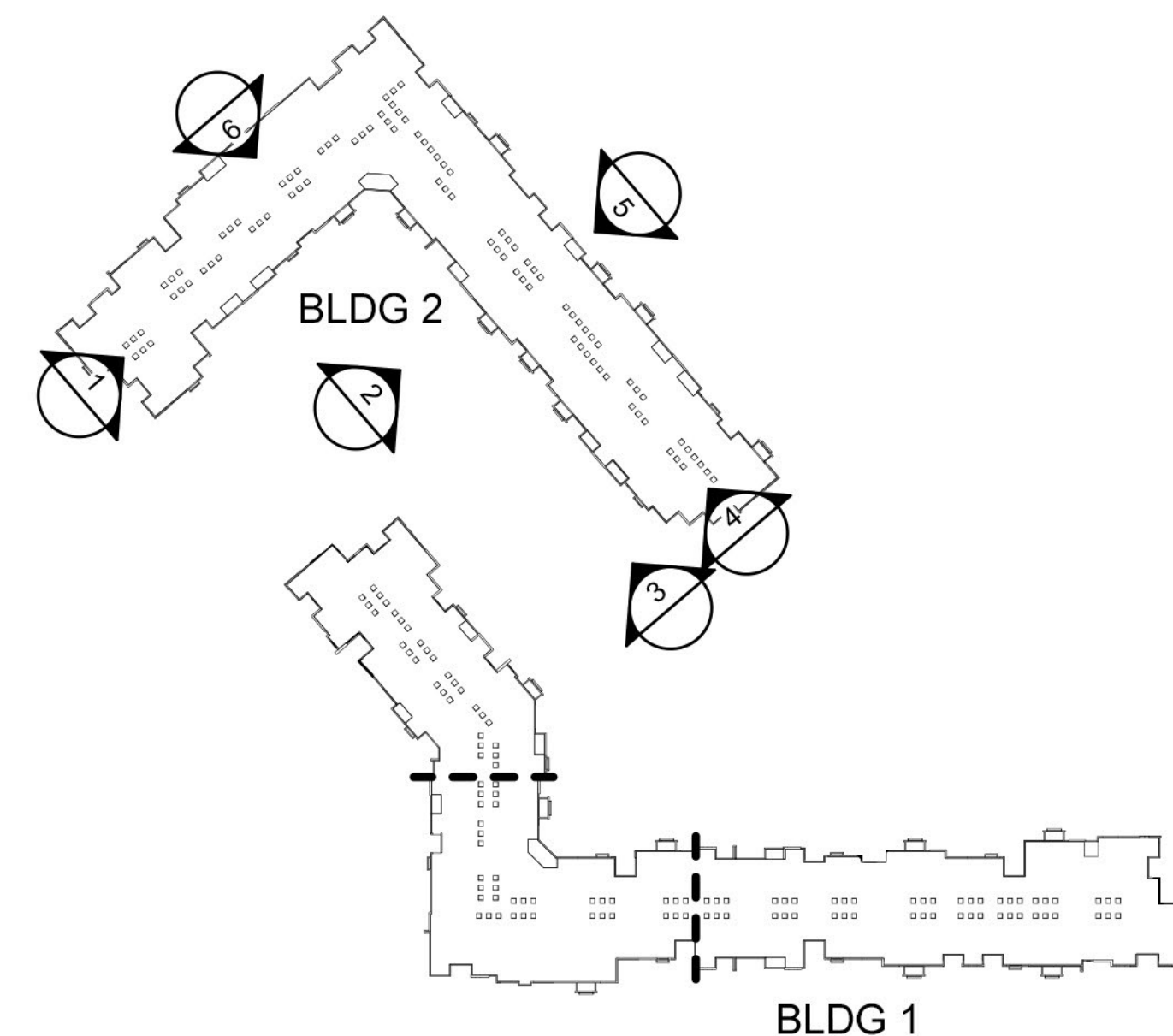


5 EAST ELEVATION

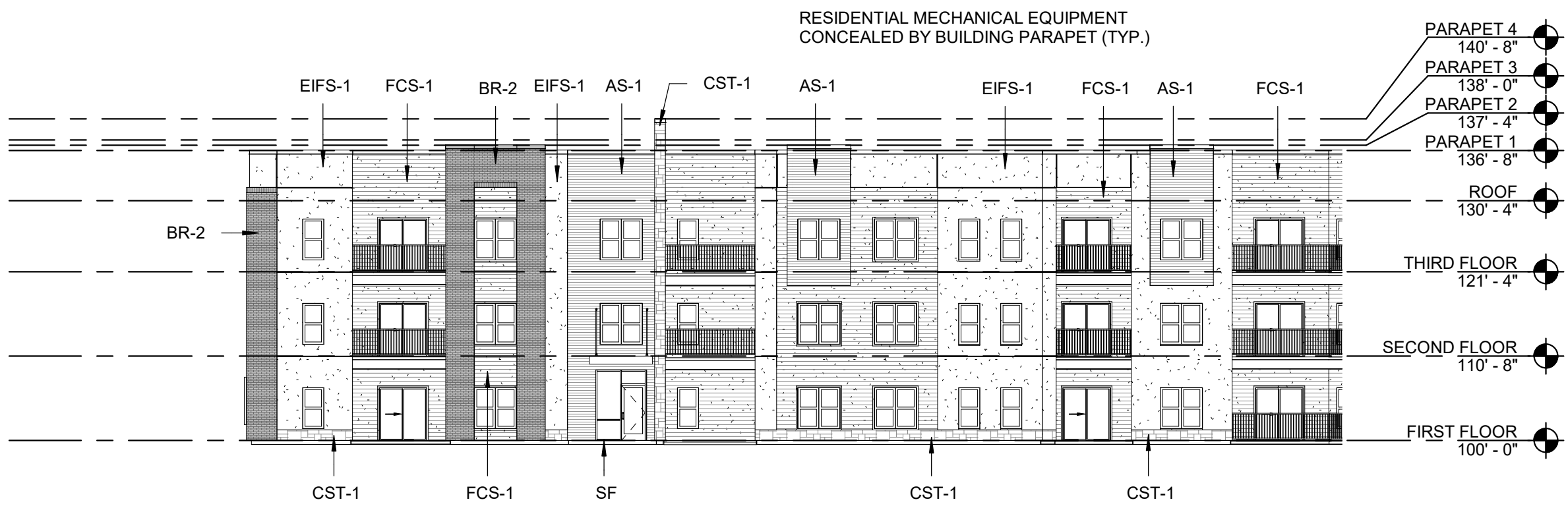


6 NORTH ELEVATION

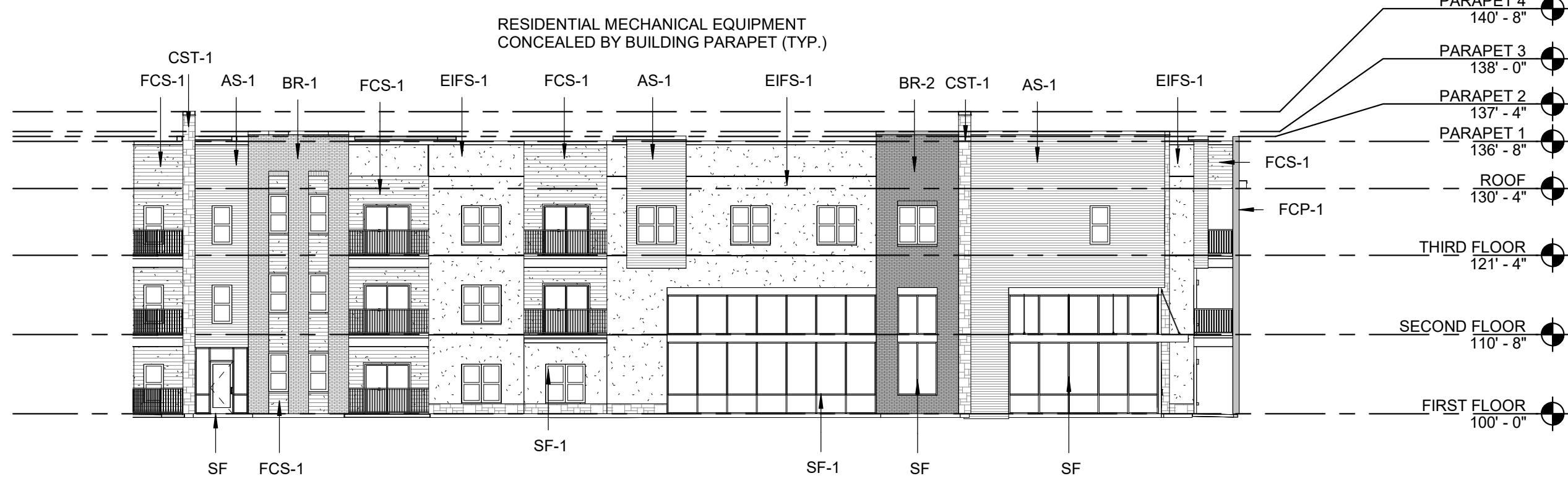
EXTERIOR MATERIAL LEGEND		
	EIFS	MFR: DRYVIT, <u>COLOR</u> : MOONLIGHT, <u>TEXTURE</u> : SAND PEBBLE
	ALUMINUM SIDING	MFR: FASTPLANK SYSTEMS, <u>SIZE</u> : 4" <u>COLOR</u> : DARK CHERRY
	FIBER CEMENT SIDING	MFR: JAMES HARDIE, <u>SIZE</u> : 5" <u>COLOR</u> : AGED PEWTER
	FIBER CEMENT SIDING	MFR: JAMES HARDIE, <u>SIZE</u> : 5" <u>COLOR</u> : IRON GRAY
	BRICK	MFR: HEBRON, <u>COLOR</u> : SEA GRAY #6, <u>SIZE</u> : MODULAR
	BRICK	MFR: ENDICOTT, <u>COLOR</u> : DARK IRONSPOT, <u>SIZE</u> : MODULAR
	BRICK	MFR: ENDICOTT, <u>COLOR</u> : MAROON, <u>SIZE</u> : MODULAR, <u>TEXTURE</u> : SMOOTH
	CAST STONE	MFR: ELDORADO STONE, <u>SERIES</u> : LEDGECUT33, <u>COLOR</u> : BIRCH
	STOREFRONT	<u>COLOR</u> : BLACK



KEY PLAN



1 BLDG 1 SOUTHWEST ELEVATION
SCALE: 1/16" = 1'-0"



9 BLDG 1 WEST ELEVATION
SCALE: 1/16" = 1'-0"

EXTERIOR MATERIAL LEGEND

(EIFS-1)	EIFS	MFR, DRYVIT, COLOR: MOONLIGHT, TEXTURE: SAND PEBBLE
(AS-1)	ALUMINUM SIDING	MFR, LONGBOARD, COLOR: DARK NATIONAL WALNUT, CODE: 1838-02-733
(FCS-1)	FIBER CEMENT SIDING	MFR, JAMES HARDIE, SIZE: 5" COLOR: AGED PEWTER TRIM THICKNESS: 3/4" - WIDTH: 2 1/2"
(FCS-2)	FIBER CEMENT SIDING	MFR, JAMES HARDIE, SIZE: 5" COLOR: IRON GRAY TRIM THICKNESS: 3/4" - WIDTH: 2 1/2"
(FCT-1)	FIBER CEMENT TRIM	MFR, JAMES HARDIE, THICKNESS: 3/4" - WIDTH: 2 1/2" COLOR: ARTIC WHITE
(BR-1)	BRICK	MFR, HEBRON, COLOR: SEA GRAY #6, SIZE: MODULAR
(BR-2)	BRICK	MFR, ENDICOTT, COLOR: DARK IRONSPOT, SIZE: MODULAR
(BR-3)	BRICK	MFR, HEBRON, COLOR: MAROON, SIZE: MODULAR, TEXTURE: SMOOTH
(CST-1)	CAST STONE	MFR, ELDERADO STONE, SERIES: LEDGECUT, COLOR: BIRCH
(SF)	STOREFRONT	COLOR: BLACK

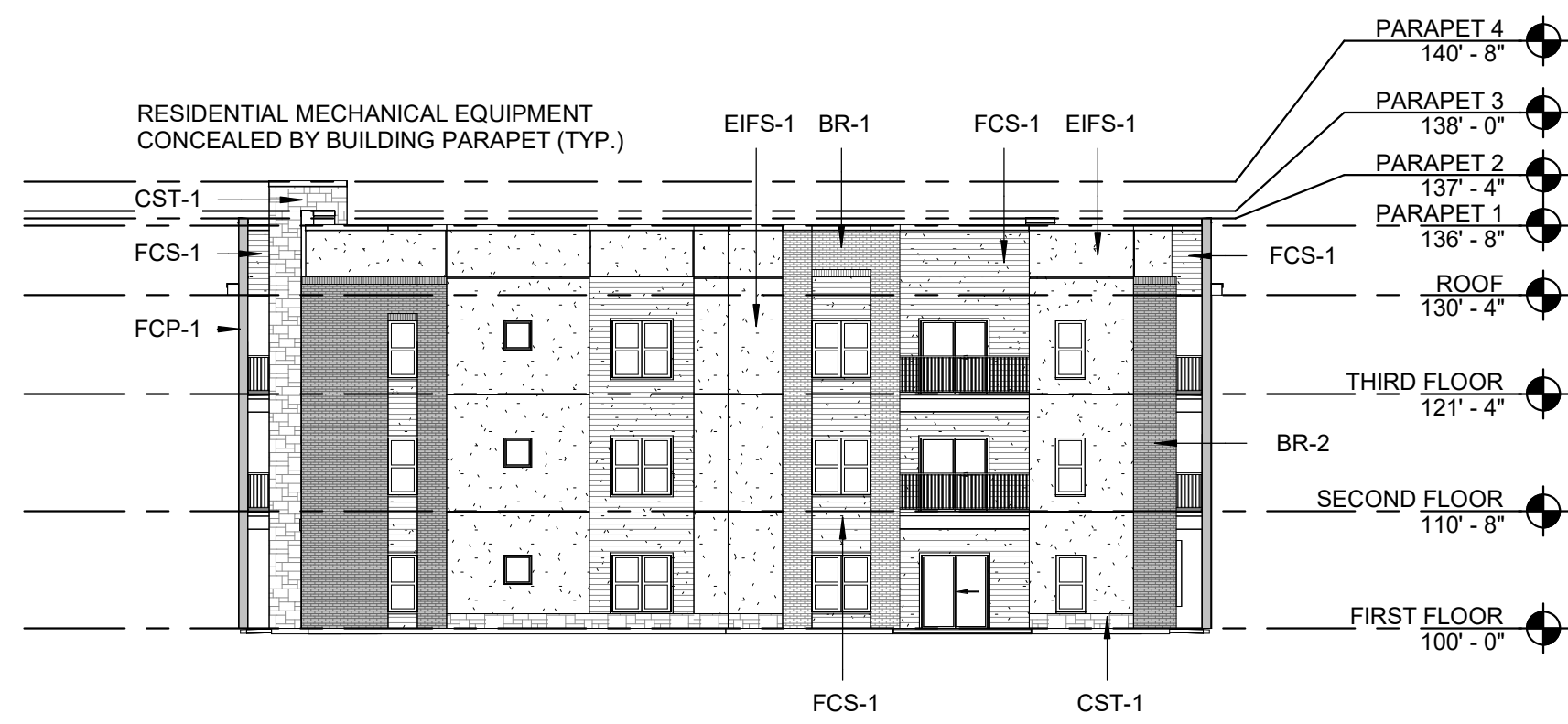
PRELIMINARY, NOT
FOR CONSTRUCTION,
RECORDING
PURPOSES OR
IMPLEMENTATION

ARCHITECT
STRUCTURAL ENGINEER
CIVIL ENGINEER
GENERAL CONTRACTOR
MECHANICAL ENGINEER
PLUMBING ENGINEER
ELECTRICAL ENGINEER

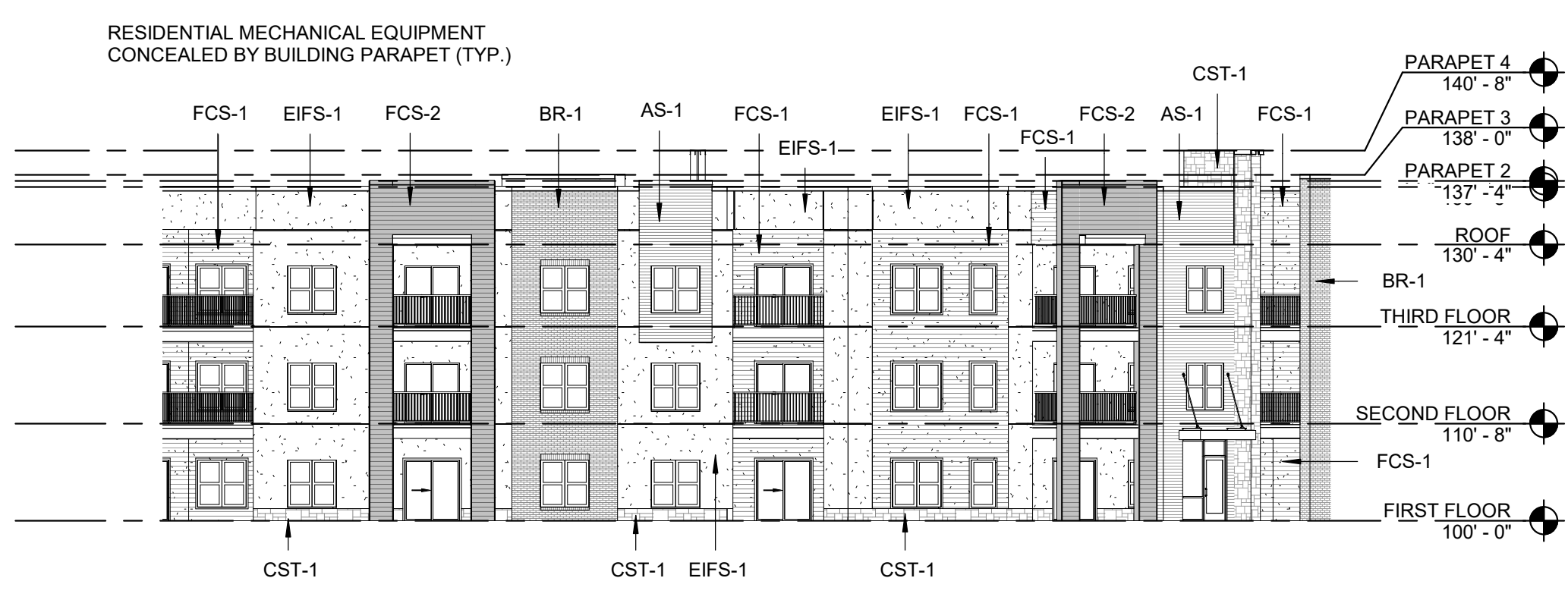
TR,I ARCHITECTS
STRUCTURAL
CIVIL
GENERAL CONTRACTOR
ENGINEER
PLUMBING
ELECTRICAL



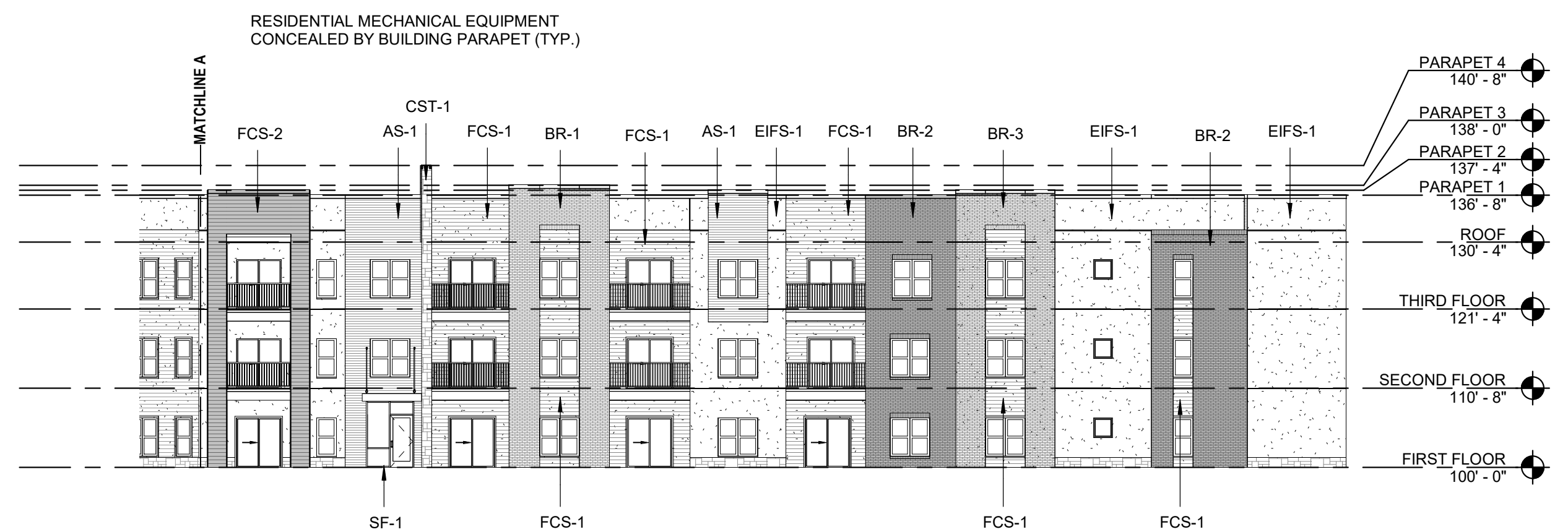
2 BLDG 1 SOUTH ELEVATION
SCALE: 1/16" = 1'-0"



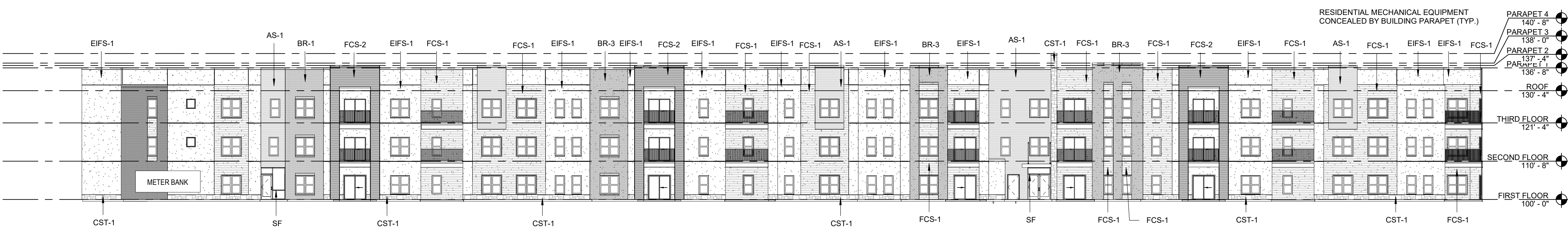
3 BLDG 1 EAST ELEVATION - SOUTH
SCALE: 1/16" = 1'-0"



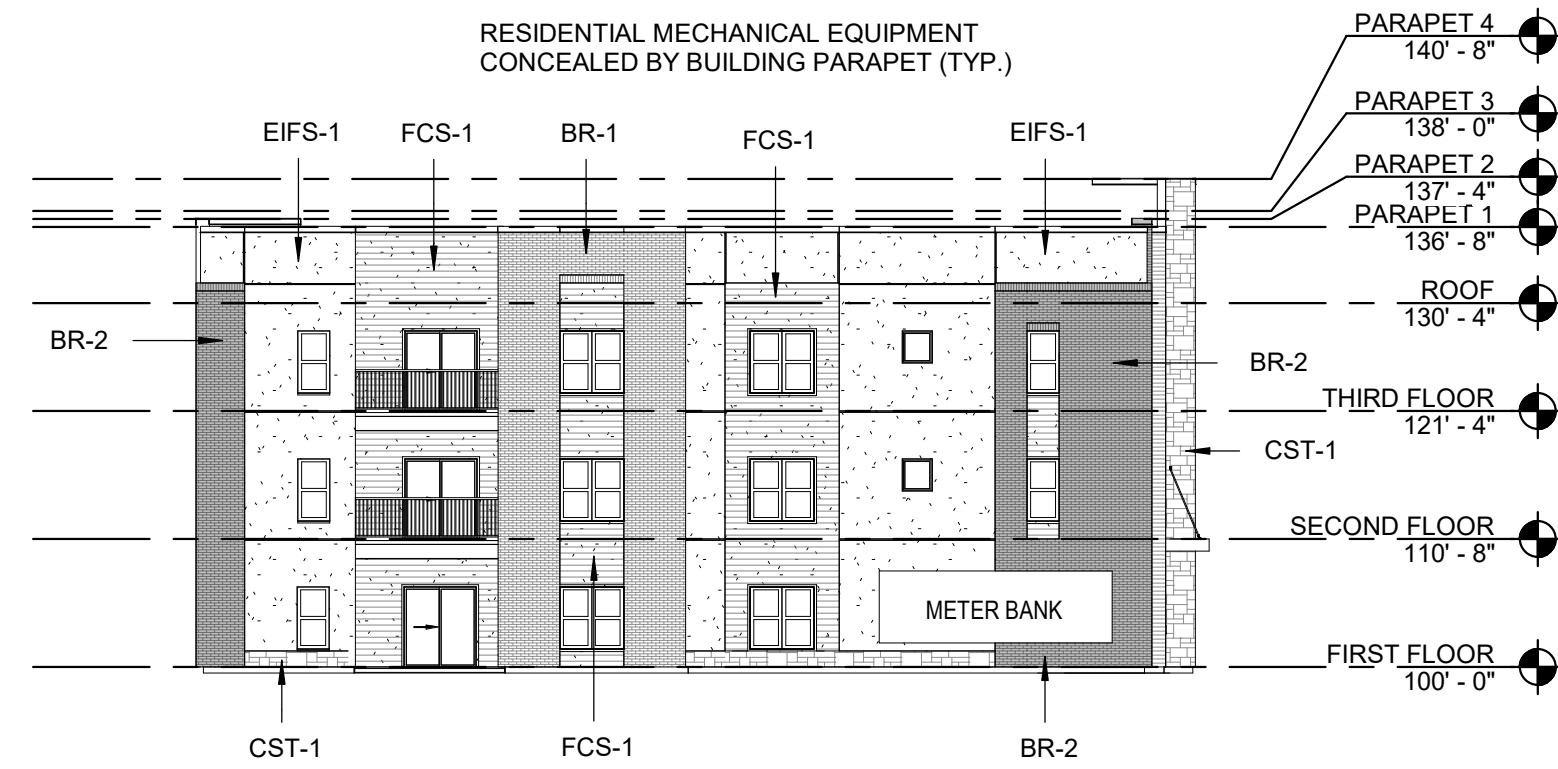
7 BLDG 1 EAST ELEVATION - NORTH
SCALE: 1/16" = 1'-0"



15 BLDG 1 NORTHEAST ELEVATION
SCALE: 1/16" = 1'-0"



4 BLDG 1 NORTH ELEVATION
SCALE: 1/16" = 1'-0"



20 BLDG 1 NORTHWEST ELEVATION
SCALE: 1/16" = 1'-0"

Summit at West Pryor - Phase II

LEE'S SUMMIT, MISSOURI

TR,I
ARCHITECTS

TR,I Architects
1790 S. Brentwood Blvd.
St. Louis, Missouri 63144
T: 314-305-9750
www.triarchitects.com
© Copyright 2021

DATE: 12.02.2020

REVISIONS

DWG BY MKSS

TR,I PROJECT NO. 20-001

SHEET NO.

A200

BLDG 1 - OVERALL EXTERIOR
ELEVATIONS



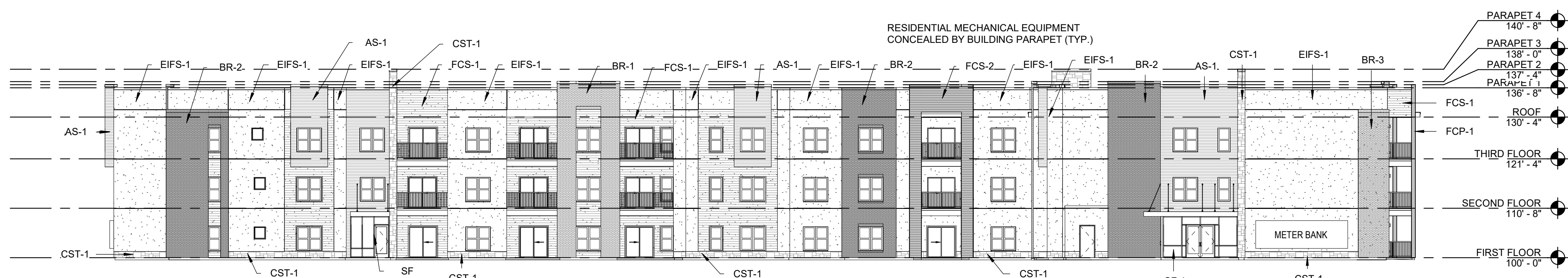
1 BLDG 2 EAST ELEVATION
SCALE: 1/16" = 1'-0"



2 BLDG 2 NORTH ELEVATION
SCALE: 1/16" = 1'-0"



3 BLDG 2 WEST ELEVATION
SCALE: 1/16" = 1'-0"



4 BLDG 2 SOUTH ELEVATION
SCALE: 1/16" = 1'-0"

EXTERIOR MATERIAL LEGEND

	EIFS-1	EIFS	MFR, DRYVIT, COLOR: MOONLIGHT, TEXTURE: SAND PEBBLE
	AS-1	ALUMINUM SIDING	MFR, LONGBOARD, COLOR: DARK NATIONAL WALNUT, CODE: 1838-02-733
	FCS-1	FIBER CEMENT SIDING	MFR, JAMES HARDIE, SIZE: 5" COLOR: AGED PEWTER TRIM THICKNESS: 3/4" WIDTH: 2 1/2"
	FCS-2	FIBER CEMENT SIDING	MFR, JAMES HARDIE, SIZE: 5" COLOR: IRON GRAY TRIM THICKNESS: 3/4" WIDTH: 2 1/2"
	FCT-1	FIBER CEMENT TRIM	MFR, JAMES HARDIE, THICKNESS: 3/4" WIDTH: 2 1/2" COLOR: ARTIC WHITE
	BR-1	BRICK	MFR, HEBRON, COLOR: SEA GRAY #6, SIZE: MODULAR
	BR-2	BRICK	MFR, ENDICOTT, COLOR: DARK IRONSPOT, SIZE: MODULAR
	BR-3	BRICK	MFR, HEBRON, COLOR: MAROON, SIZE: MODULAR, TEXTURE: SMOOTH
	CST-1	CAST STONE	MFR, ELDERADO STONE, SERIES: LEDGECUT, COLOR: BIRCH
	SF	STOREFRONT	COLOR: BLACK

PRELIMINARY, NOT
FOR CONSTRUCTION,
RECORDING
PURPOSES OR
IMPLEMENTATION

ARCHITECT
STRUCTURAL ENGINEER
CIVIL ENGINEER
GENERAL CONTRACTOR
MECHANICAL ENGINEER
PLUMBING ENGINEER
ELECTRICAL ENGINEER

TR,i ARCHITECTS
STRUCTURAL
CIVIL
GENERAL CONTRACTOR
ENGINEER
PLUMBING
ELECTRICAL

Summit at West Pryor - Phase II

LEE'S SUMMIT, MISSOURI

TR,i
ARCHITECTS

TR,i Architects
1700 S. Brentwood Blvd.
St. Louis, Missouri 63144
T: 314-305-9750
www.triarchitects.com
© Copyright 2021

DATE: 12.02.2020

REVISIONS

DWG BY MKSS

TR,i PROJECT NO. 20-001

SHEET NO.

A220

BLDG 2 - OVERALL EXTERIOR
ELEVATIONS

FLOOR PLAN KEYED NOTES

1. FINISH FLOOR ELEVATION ASSUMED ELEVATION 100'-0" TYPICAL. U.N.O. RE: CIVIL DRAWINGS FOR ALL GRADE INFORMATION.
2. 5" CONCRETE FLOOR SLAB WITH 6"x6" - W1.4xW1.4 W.W.F. ON 10 MIL POLY FILM VAPOR BARRIER ON 4" GRANULAR FILL. RE: STRUCTURAL DWGS.
- 3.

GENERAL NOTES

- A. DIMENSIONS ARE TO FACE OF STUD OR FACE OF MASONRY.
- B. FOR DOOR SCHEDULE SEE SHEET A040 XXX
- C. FOR WINDOW SCHEDULE SEE SHEET A060 (X)
- D. FOR PARTITION TYPES SEE SHEET A030 (X)
- E. FOR UNIT INTERIOR PARTITION TYPES AND LOCATIONS REFER TO UNIT SHEETS (A400 THROUGH A4XX).
- F. GENERAL CONTRACTOR WILL FURNISH & INSTALL 5 LB MULTIPURPOSE DRY CHEMICAL 2A-10B C RATED FIRE EXTINGUISHERS w/ MOUNTING BRACKETS & ACCESSORIES @ 4'-0" A.F.F. AS REQUIRED BY GOVERNMENTAL AUTHORITIES. MAXIMUM TRAVEL DISTANCE OF 75'-0" FOR PLACEMENT IN PUBLIC SPACES AND CORRIDORS. A MINIMUM RATED 1A-10B C FIRE EXTINGUISHER TO BE PROVIDED IN EACH UNIT.
- G. CONTROL JOINTS SHOULD BE SPACED IN GYPSUM WALL BOARD TO LIMIT EXPANSES TO 30'-0" MAXIMUM. CONTROL JOINTS ARE RECOMMENDED AT DOOR JAMBS EXTENDING FROM DOOR HEAD TO CEILING. CEILING GYPSUM BOARD CONTROL JOINTS SHOULD LIMIT THE CEILING AREA TO 2,500 SF MAX. AND 50'-0" IN EITHER DIRECTION. CONTROL JOINT SHOULD BE INSTALLED WHERE THERE IS A CHANGE IN DIRECTION IN CEILING FRAMING/FURRING OR SPACE CONTROL JOINTS AT THE CEILING AND WALL PER THE MANUFACTURER'S RECOMMENDED INSTALLATION GUIDELINES. CEILING AND WALL CONTROL JOINTS ARE TO ALIGN AT ALL INTERSECTIONS WHERE APPLICABLE TO FORM A CONTINUOUS CONTROL JOINT. ENSURE THAT CONTROL JOINTS ARE LOCATED AT STRUCTURAL CONSTRUCTION JOINTS AND AT THE TOP AND BOTTOM OF ALL INTERIOR RAMPS.
- H. UNLESS NOTED OTHERWISE, CORRIDOR PARTITION TYPE IN RESIDENTIAL AREA TO BE [B2] UNIT ENTRY RECESS PARTITION TYPE TO BE [A2] AND PARTITION TYPE BEHIND REFRIGERATOR TO BE [B1]
- I. COORDINATE LOCATION OF BEARING WALLS INSIDE DWELLING UNITS WITH UNIT PLANS.
- J. REFER TO LIFE SAFETY PLANS FOR ADDITIONAL INFORMATION ON FIRE RATED PARTITION LOCATIONS.
- K. NO PENETRATIONS WITHIN 4" OF FIRE WALLS. VERIFY IN FIELD.
- L. IT IS THE GENERAL CONTRACTOR'S RESPONSIBILITY TO COORDINATE, LOCATE AND CONFIRM ALL FLOOR SINK, UNDERGROUND / OVERHEAD PLUMBING AND ELECTRICAL STUB-UPS, SPOT GRADING AT PERIMETER FOUNDATIONS
- M. THE ARCHITECT ASSUMES THE GENERAL CONTRACTOR HAS INCLUDED IN HIS BID THE HIGHEST QUALITY AND GREATEST QUANTITY FOR THE PURPOSE OF RESOLVING ANY CONFLICTS IN THE CONSTRUCTION DOCUMENTS WHICH ARE IMPLIED OR UNDEPIED.
- N. * ASSUMED FINISH FLOOR ELEVATION = 100.00" VERIFY ACTUAL FINISH FLOOR ELEVATION WITH CIVIL DRAWINGS.
- O. GENERAL CONTRACTOR TO CAULK AND SEAL EXPANSION JOINTS AT ALL EXTERIOR/INTERIOR CONCRETE - SEE MASONRY SPECIFICATIONS.
- P. GENERAL CONTRACTOR SHALL VERIFY GOVERNMENTAL REQUIREMENTS PRIOR TO BID AND INCLUDE IN BID ALL COSTS ASSOCIATED WITH FIRE ALARM SYSTEM INCLUDING AUDIOVISUAL DEVICES AND PULL STATIONS WHERE REQUIRED.
- Q. FIRE RETARDANT TREATED WOOD PERMITTED TO BE USED IN LOCATIONS SPECIFIED IN TABLE 602, NOTE D AND SECTION 603.2 AND 2310.0. VERIFY SECTIONS IN 20XA IBC.
- R. FOR RETAIL SHOPS, COORDINATE WITH G.C. AND OWNER FOR FINAL TENANT DOOR QUANTITIES AND LOCATIONS.
- S. FLOOR COVERING: CONTRACTOR TO PROVIDE STEEL TRAWLED CONCRETE FLOOR THROUGHOUT (AS INDICATED ON FLOOR PLAN) READY TO RECEIVE TENANTS FINISHED FLOOR.

PRELIMINARY, NOT
FOR CONSTRUCTION,
RECORDING
PURPOSES OR
IMPLEMENTATION

ARCHITECT
STRUCTURAL ENGINEER
CIVIL ENGINEER
GENERAL CONTRACTOR
MECHANICAL ENGINEER
PLUMBING ENGINEER
ELECTRICAL ENGINEER

TR,i ARCHITECTS
STRUCTURAL
CIVIL
GENERAL CONTRACTOR
ENGINEER
PLUMBING
ELECTRICAL

Summit at West Pryor - Phase II

LEE'S SUMMIT, MISSOURI

TR,i
ARCHITECTS

TR,i Architects
1790 S. Brentwood Blvd.
St. Louis, Missouri 63144
T: 314-305-9750
www.triarchitects.com
© Copyright 2021

DATE: 12.02.2020

REVISIONS

DWG BY MKSS

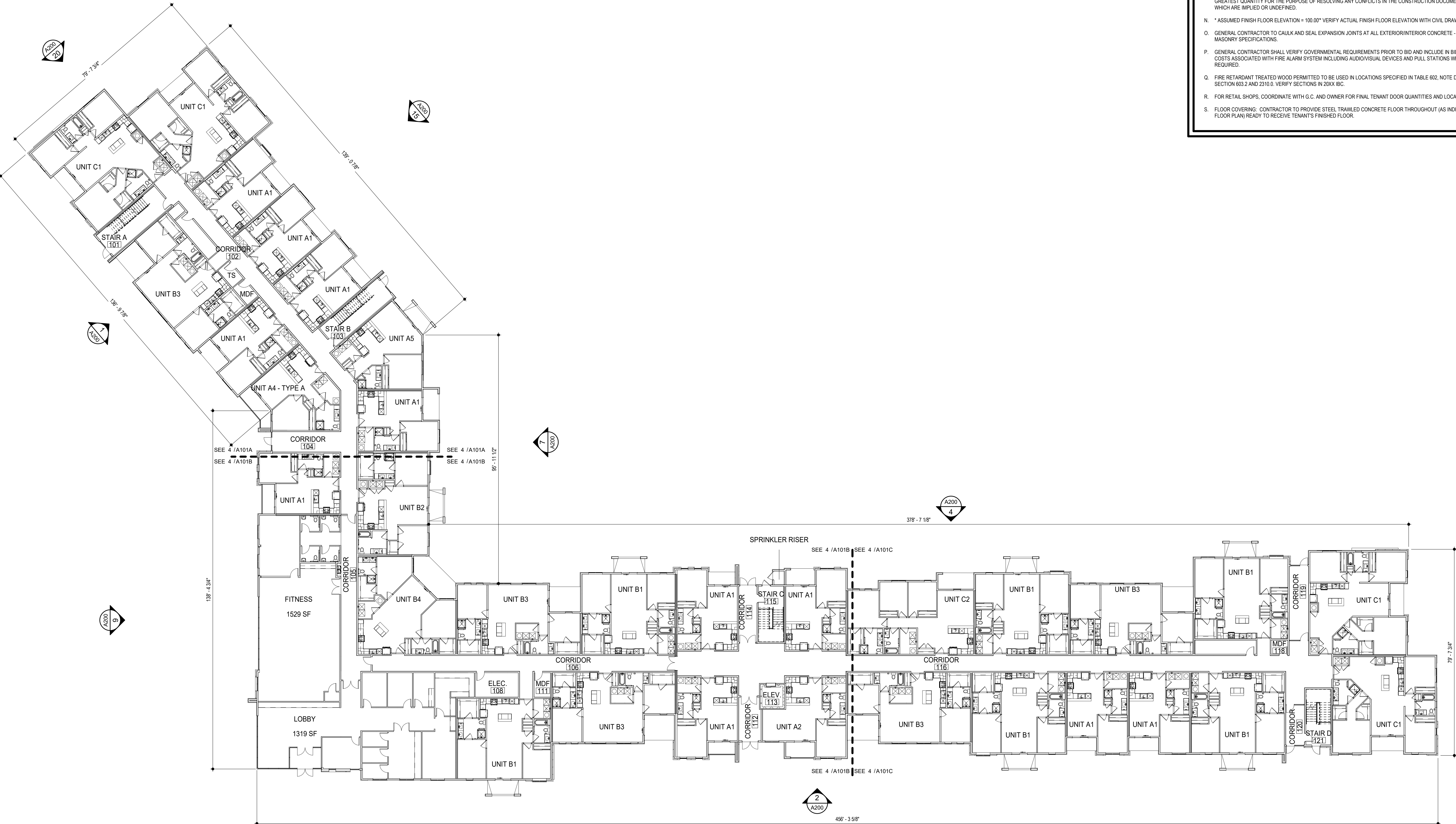
TR,i PROJECT NO. 20-001

SHEET NO.

A101

BLDG 1 - FIRST FLOOR PLAN

4 BLDG 1 - FIRST FLOOR PLAN
SCALE: 1/16" = 1'-0"



FLOOR PLAN KEYED NOTES

1. FINISH FLOOR ELEVATION ASSUMED ELEVATION 100'-0" TYPICAL U.N.O. RE: CIVIL DRAWINGS FOR ALL GRADE INFORMATION.

2. 5" CONCRETE FLOOR SLAB WITH 6"x6" - W1.4xW1.4 W.W.F. ON 10 MIL POLY FILM VAPOR BARRIER ON 4" GRANULAR FILL. RE: STRUCTURAL DWGS.

3.

GENERAL NOTES

A. DIMENSIONS ARE TO FACE OF STUD OR FACE OF MASONRY.

B. FOR DOOR SCHEDULE SEE SHEET A040 XXX

C. FOR WINDOW SCHEDULE SEE SHEET A060 (X)

D. FOR PARTITION TYPES SEE SHEET A030 (X)

E. FOR UNIT INTERIOR PARTITION TYPES AND LOCATIONS REFER TO UNIT SHEETS (A400 THROUGH A4XX).

F. GENERAL CONTRACTOR WILL FURNISH & INSTALL 5 LB MULTIPURPOSE DRY CHEMICAL 2A-10B C RATED FIRE EXTINGUISHERS w/ MOUNTING BRACKETS & ACCESSORIES @ 4'-0" A.F.F. AS REQUIRED BY GOVERNMENTAL AUTHORITIES. MAXIMUM TRAVEL DISTANCE OF 75'-0" FOR PLACEMENT IN PUBLIC SPACES AND CORRIDORS. A MINIMUM RATED 1A-10B C FIRE EXTINGUISHER TO BE PROVIDED IN EACH UNIT.

G. CONTROL JOINTS SHOULD BE SPACED IN GYPSUM WALL BOARD TO LIMIT EXPANSES TO 30'-0" MAXIMUM. CONTROL JOINTS ARE RECOMMENDED AT DOOR JAMBS EXTENDING FROM DOOR HEAD TO CEILING. CEILING GYPSUM BOARD CONTROL JOINTS SHOULD LIMIT THE CEILING AREA TO 2,500 SF MAX. AND 50'-0" IN EITHER DIRECTION. CONTROL JOINT SHOULD BE INSTALLED WHERE THERE IS A CHANGE IN DIRECTION IN CEILING FRAMING/FURRING OR SPACE CONTROL JOINTS AT THE CEILING AND WALL PER THE MANUFACTURER'S RECOMMENDED INSTALLATION GUIDELINES. CEILING AND WALL CONTROL JOINTS ARE TO ALIGN AT ALL INTERSECTIONS WHERE APPLICABLE TO FORM A CONTINUOUS CONTROL JOINT. ENSURE THAT CONTROL JOINTS ARE LOCATED AT STRUCTURAL CONSTRUCTION JOINTS AND AT THE TOP AND BOTTOM OF ALL INTERIOR RAMPS.

H. UNLESS NOTED OTHERWISE, CORRIDOR PARTITION TYPE IN RESIDENTIAL AREA TO BE [B2] UNIT ENTRY RECESS PARTITION TYPE TO BE [A2] AND PARTITION TYPE BEHIND REFRIGERATOR TO BE [B1]

I. COORDINATE LOCATION OF BEARING WALLS INSIDE DWELLING UNITS WITH UNIT PLANS.

J. REFER TO LIFE SAFETY PLANS FOR ADDITIONAL INFORMATION ON FIRE RATED PARTITION LOCATIONS.

K. NO PENETRATIONS WITHIN 4" OF FIRE WALLS. VERIFY IN FIELD.

L. IT IS THE GENERAL CONTRACTOR'S RESPONSIBILITY TO COORDINATE, LOCATE AND CONFIRM ALL FLOOR SINK, UNDERGROUND / OVERHEAD PLUMBING AND ELECTRICAL STUB-UPS, SPOT GRADING AT PERIMETER FOUNDATIONS

M. THE ARCHITECT ASSUMES THE GENERAL CONTRACTOR HAS INCLUDED IN HIS BID THE HIGHEST QUALITY AND GREATEST QUANTITY FOR THE PURPOSE OF RESOLVING ANY CONFLICTS IN THE CONSTRUCTION DOCUMENTS WHICH ARE IMPLIED OR UNDEPICTED.

N. * ASSUMED FINISH FLOOR ELEVATION = 100.00" VERIFY ACTUAL FINISH FLOOR ELEVATION WITH CIVIL DRAWINGS.

O. GENERAL CONTRACTOR TO CAULK AND SEAL EXPANSION JOINTS AT ALL EXTERIOR/INTERIOR CONCRETE - SEE MASONRY SPECIFICATIONS.

P. GENERAL CONTRACTOR SHALL VERIFY GOVERNMENTAL REQUIREMENTS PRIOR TO BID AND INCLUDE IN BID ALL COSTS ASSOCIATED WITH FIRE ALARM SYSTEM INCLUDING AUDIOVISUAL DEVICES AND PULL STATIONS WHERE REQUIRED.

Q. FIRE RETARDANT TREATED WOOD PERMITTED TO BE USED IN LOCATIONS SPECIFIED IN TABLE 602, NOTE D AND SECTION 603.2 AND 2310.0. VERIFY SECTIONS IN 20XA IBC.

R. FOR RETAIL SHOPS, COORDINATE WITH G.C. AND OWNER FOR FINAL TENANT DOOR QUANTITIES AND LOCATIONS.

S. FLOOR COVERING: CONTRACTOR TO PROVIDE STEEL TRAWLED CONCRETE FLOOR THROUGHOUT (AS INDICATED ON FLOOR PLAN) READY TO RECEIVE TENANTS FINISHED FLOOR.

4

BLDG 1 - SECOND FLOOR PLAN

SCALE: 1/16" = 1'-0"

PRELIMINARY, NOT FOR CONSTRUCTION, RECORDING PURPOSES OR IMPLEMENTATION

ARCHITECT

STRUCTURAL ENGINEER

CIVIL ENGINEER

GENERAL CONTRACTOR

MECHANICAL ENGINEER

PLUMBING ENGINEER

ELECTRICAL ENGINEER

TR,i ARCHITECTS

STRUCTURAL

CIVIL

GENERAL CONTRACTOR

ENGINEER

PLUMBING

ELECTRICAL

Summit at West Pryor - Phase II

LEE'S SUMMIT, MISSOURI

TR,i ARCHITECTS

TR,i Architects
1750 S. Brentwood Blvd.
St. Louis, Missouri 63144
© Copyright 2021
T: 314-305-9750
www.triarchitects.com

DATE: 12.02.2020

REVISIONS

DWG BY MKSS

TR,i PROJECT NO. 20-001

SHEET NO. A102

BLDG 1 - SECOND FLOOR PLAN

FLOOR PLAN KEYED NOTES

1. FINISH FLOOR ELEVATION ASSUMED ELEVATION 100'-0" TYPICAL. U.N.O. RE: CIVIL DRAWINGS FOR ALL GRADE INFORMATION.

2. 5" CONCRETE FLOOR SLAB WITH 6"x6" - W1.4xW1.4 W.W.F. ON 10 MIL POLY FILM VAPOR BARRIER ON 4" GRANULAR FILL. RE: STRUCTURAL DWGS.

3.

GENERAL NOTES

A. DIMENSIONS ARE TO FACE OF STUD OR FACE OF MASONRY.

B. FOR DOOR SCHEDULE SEE SHEET A040 XXX

C. FOR WINDOW SCHEDULE SEE SHEET A060 (X)

D. FOR PARTITION TYPES SEE SHEET A030 (X)

E. FOR UNIT INTERIOR PARTITION TYPES AND LOCATIONS REFER TO UNIT SHEETS (A400 THROUGH A4XX).

F. GENERAL CONTRACTOR WILL FURNISH & INSTALL 5 LB MULTIPURPOSE DRY CHEMICAL 2A-10B C RATED FIRE EXTINGUISHERS w/ MOUNTING BRACKETS & ACCESSORIES @ 4'-0" A.F.F. AS REQUIRED BY GOVERNMENTAL AUTHORITIES. MAXIMUM TRAVEL DISTANCE OF 75'-0" FOR PLACEMENT IN PUBLIC SPACES AND CORRIDORS. A MINIMUM RATED 1A-10B C FIRE EXTINGUISHER TO BE PROVIDED IN EACH UNIT.

G. CONTROL JOINTS SHOULD BE SPACED IN GYPSUM WALL BOARD TO LIMIT EXPANSES TO 30'-0" MAXIMUM. CONTROL JOINTS ARE RECOMMENDED AT DOOR JAMBS EXTENDING FROM DOOR HEAD TO CEILING. CEILING GYPSUM BOARD CONTROL JOINTS SHOULD LIMIT THE CEILING AREA TO 2,500 SF MAX. AND 50'-0" IN EITHER DIRECTION. CONTROL JOINT SHOULD BE INSTALLED WHERE THERE IS A CHANGE IN DIRECTION IN CEILING FRAMING/FURRING OR SPACE CONTROL JOINTS AT THE CEILING AND WALL PER THE MANUFACTURER'S RECOMMENDED INSTALLATION GUIDELINES. CEILING AND WALL CONTROL JOINTS ARE TO ALIGN AT ALL INTERSECTIONS WHERE APPLICABLE TO FORM A CONTINUOUS CONTROL JOINT. ENSURE THAT CONTROL JOINTS ARE LOCATED AT STRUCTURAL CONSTRUCTION JOINTS AND AT THE TOP AND BOTTOM OF ALL INTERIOR RAMPS.

H. UNLESS NOTED OTHERWISE, CORRIDOR PARTITION TYPE IN RESIDENTIAL AREA TO BE B2 UNIT ENTRY RECESS PARTITION TYPE TO BE A2 AND PARTITION TYPE BEHIND REFRIGERATOR TO BE B1

I. COORDINATE LOCATION OF BEARING WALLS INSIDE DWELLING UNITS WITH UNIT PLANS.

J. REFER TO LIFE SAFETY PLANS FOR ADDITIONAL INFORMATION ON FIRE RATED PARTITION LOCATIONS.

K. NO PENETRATIONS WITHIN 4" OF FIRE WALLS. VERIFY IN FIELD.

L. IT IS THE GENERAL CONTRACTOR'S RESPONSIBILITY TO COORDINATE, LOCATE AND CONFIRM ALL FLOOR SINK, UNDERGROUND / OVERHEAD PLUMBING AND ELECTRICAL STUB-UPS, SPOT GRADING AT PERIMETER FOUNDATIONS

M. THE ARCHITECT ASSUMES THE GENERAL CONTRACTOR HAS INCLUDED IN HIS BID THE HIGHEST QUALITY AND GREATEST QUANTITY FOR THE PURPOSE OF RESOLVING ANY CONFLICTS IN THE CONSTRUCTION DOCUMENTS WHICH ARE IMPLIED OR UNDEPICTED.

N. * ASSUMED FINISH FLOOR ELEVATION = 100.00" VERIFY ACTUAL FINISH FLOOR ELEVATION WITH CIVIL DRAWINGS.

O. GENERAL CONTRACTOR TO CAULK AND SEAL EXPANSION JOINTS AT ALL EXTERIOR/INTERIOR CONCRETE - SEE MASONRY SPECIFICATIONS.

P. GENERAL CONTRACTOR SHALL VERIFY GOVERNMENTAL REQUIREMENTS PRIOR TO BID AND INCLUDE IN BID ALL COSTS ASSOCIATED WITH FIRE ALARM SYSTEM INCLUDING AUDIOVISUAL DEVICES AND PULL STATIONS WHERE REQUIRED.

Q. FIRE RETARDANT TREATED WOOD PERMITTED TO BE USED IN LOCATIONS SPECIFIED IN TABLE 602, NOTE D AND SECTION 603.2 AND 2310.0. VERIFY SECTIONS IN 20XX IBC.

R. FOR RETAIL SHOPS, COORDINATE WITH G.C. AND OWNER FOR FINAL TENANT DOOR QUANTITIES AND LOCATIONS.

S. FLOOR COVERING: CONTRACTOR TO PROVIDE STEEL TRAWLED CONCRETE FLOOR THROUGHOUT (AS INDICATED ON FLOOR PLAN) READY TO RECEIVE TENANTS' FINISHED FLOOR.

PRELIMINARY, NOT FOR CONSTRUCTION, RECORDING PURPOSES OR IMPLEMENTATION

ARCHITECT	STRUCTURAL ENGINEER	CIVIL ENGINEER	GENERAL CONTRACTOR	MECHANICAL ENGINEER	PLUMBING ENGINEER	ELECTRICAL ENGINEER
TR,i ARCHITECTS	STRUCTURAL	CIVIL	GENERAL CONTRACTOR	ENGINEER	PLUMBING	ELECTRICAL

Summit at West Pryor - Phase II

LEE'S SUMMIT, MISSOURI

TR,i ARCHITECTS

TR,i Architects
1750 S. Brentwood Blvd.
St. Louis, Missouri 63144
© Copyright 2021 63144

T: 314-305-9750
www.triarchitects.com

DATE:

12.02.2020

REVISIONS

DWG BY

MKSS

TR,i PROJECT NO.

20-001

SHEET NO.

A103

BLDG 1 - THIRD FLOOR PLAN

ROOF KEYED NOTES

1.

1. PROVIDE TAPERED CRICKETS AT ALL ROOF TOP UNITS. SLOPE 1/2" PER FOOT MINIMUM. INSTALL FLASHING AND COUNTER FLASHING PER ROOFING MANUFACTURER'S WRITTEN RECOMMENDATIONS.

2.

TAPERED CRICKETS AS REQUIRED. SLOPE 1/2" PER FOOT MINIMUM.

3.

FULLY ADHERED T.P.O. ROOF MEMBRANE.

4.

CHANGE IN ROOF SLOPE AND/OR ELEVATION.

5.

ROOF DRAIN. SEE PLUMBING DRAWINGS FOR ADDITIONAL INFORMATION.

6.

THRU-WALL ROOF SCUPPER WITH OVERFLOW.

7.

Z-6" x 8'-0" ROOF ACCESS HATCH.

8.

ELEVATOR OVERRUN.

9.

PROVIDE WALKWAY PADS FROM ROOF ACCESS TO ALL ROOFTOP EQUIPMENT.

10.

ROOF SHEATHING TO BE CONSTRUCTED OF FIRE RETARDANT TREATED WOOD 4'-0" EACH SIDE OF FIRE WALL.

11.

STUD KICKER WITH PLYWOOD SHEATHING AND ROOFING MEMBRANE.

12.

EXPANSION JOINT RE: 9/A32

ROOF GENERAL NOTES

A.

VERIFY LOCATIONS OF ALL ROOF PENETRATIONS WITH STRUCTURAL, M.E.P. AND ARCHITECTURAL DRAWINGS.

B.

EXHAUST FANS AND VENTS TO BE LOCATED A MINIMUM OF 10'-0" FROM RTU's.

C.

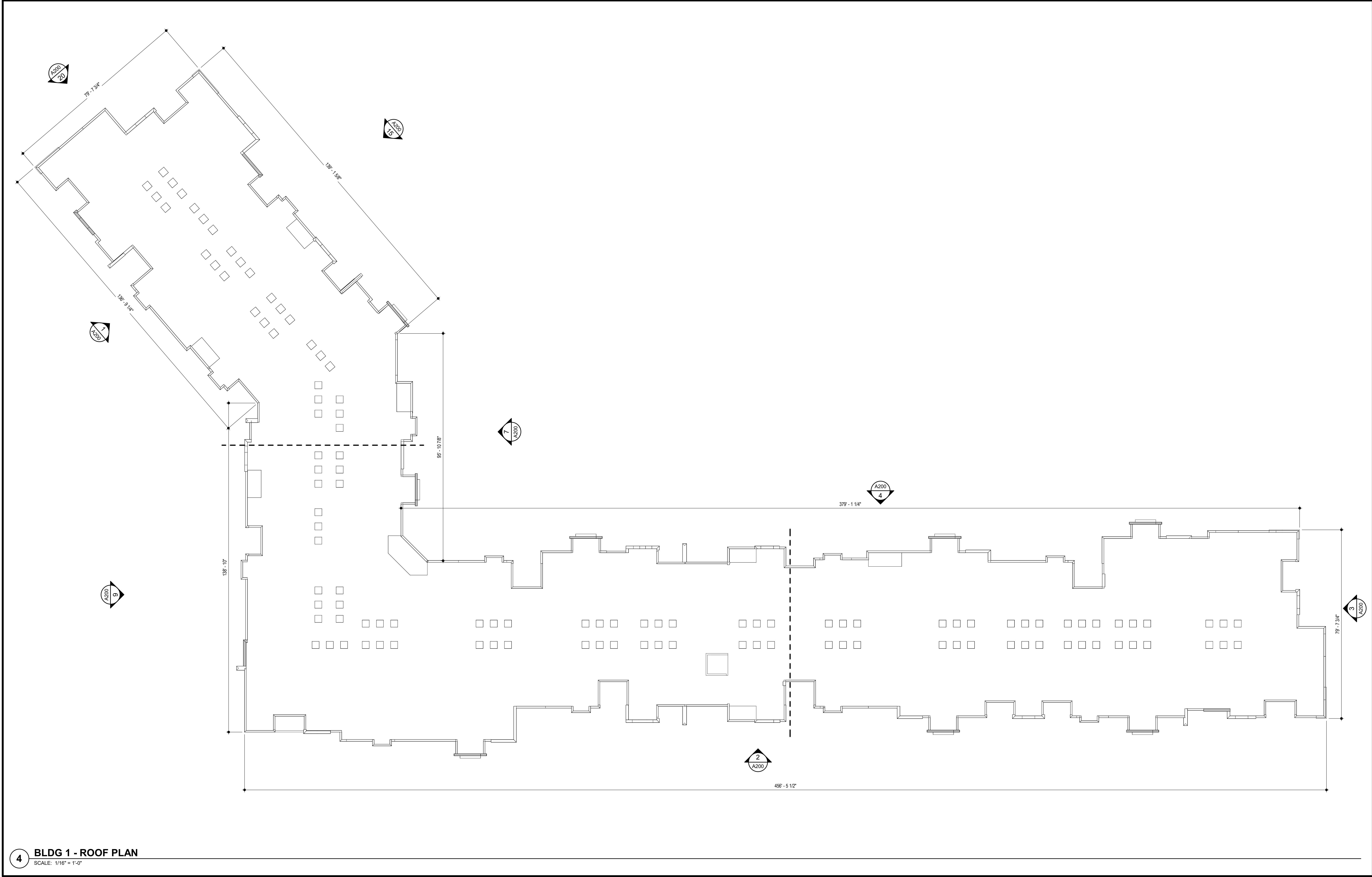
ALL ROOF EQUIPMENT TO BE MOUNTED ON CURBS. MECHANICAL SUBCONTRACTOR TO COORDINATE INSTALLATION AND ACCEPTANCE OF PREFABRICATED CURBS AND PENETRATIONS WITH ROOF MEMBRANE MANUFACTURER. GENERAL CONTRACTOR TO PROVIDE ALL REQUIRED BLOCKING, NAILING, ETC. AS REQUIRED FOR A WATERTIGHT BUILDING.

D.

IT IS THE GENERAL CONTRACTOR'S RESPONSIBILITY TO COORDINATE THE INSTALLATION OF ALL FLASHING, BLOCKING, NAILERS, INSULATION STOPS, CRICKETS, ETC. NECESSARY FOR A COMPLETE, WARRANTED AND WATERTIGHT INSTALLATION.

E.

ALL ROOF SLOPES ARE TO HAVE A MINIMUM OF 1/4" FALL WHERE CRICKETS AND VALLEYS OCCUR. CRICKETS ARE TO BE PROVIDED WITH SUFFICIENT DEPTH AND SLOPE TO ACCOMMODATE A MINIMUM 1/4" PER FOOT FALL AT VALLEY.



PRELIMINARY, NOT FOR CONSTRUCTION, RECORDING PURPOSES OR IMPLEMENTATION					
TRI ARCHITECTS	ARCHITECT				
	STRUCTURAL ENGINEER				
	CIVIL ENGINEER				
	GENERAL CONTRACTOR				
STRUCTURAL					
CIVIL					
ENGINEER					
PLUMBING					
ELECTRICAL					

Summit at West Pryor - Phase II

LEE'S SUMMIT, MISSOURI

TR,i

ARCHITECTS

TR,i Architects

1700 S. Brentwood Blvd.

St. Louis, Missouri 63144

© Copyright 2021

T: 314-305-9750

www.triarchitects.com

DATE:

12.02.2020

REVISIONS

1

2

3

4

5

6

7

8

9

10

11

12

13

14

15

16

17

18

19

20

DWG BY

MKSS

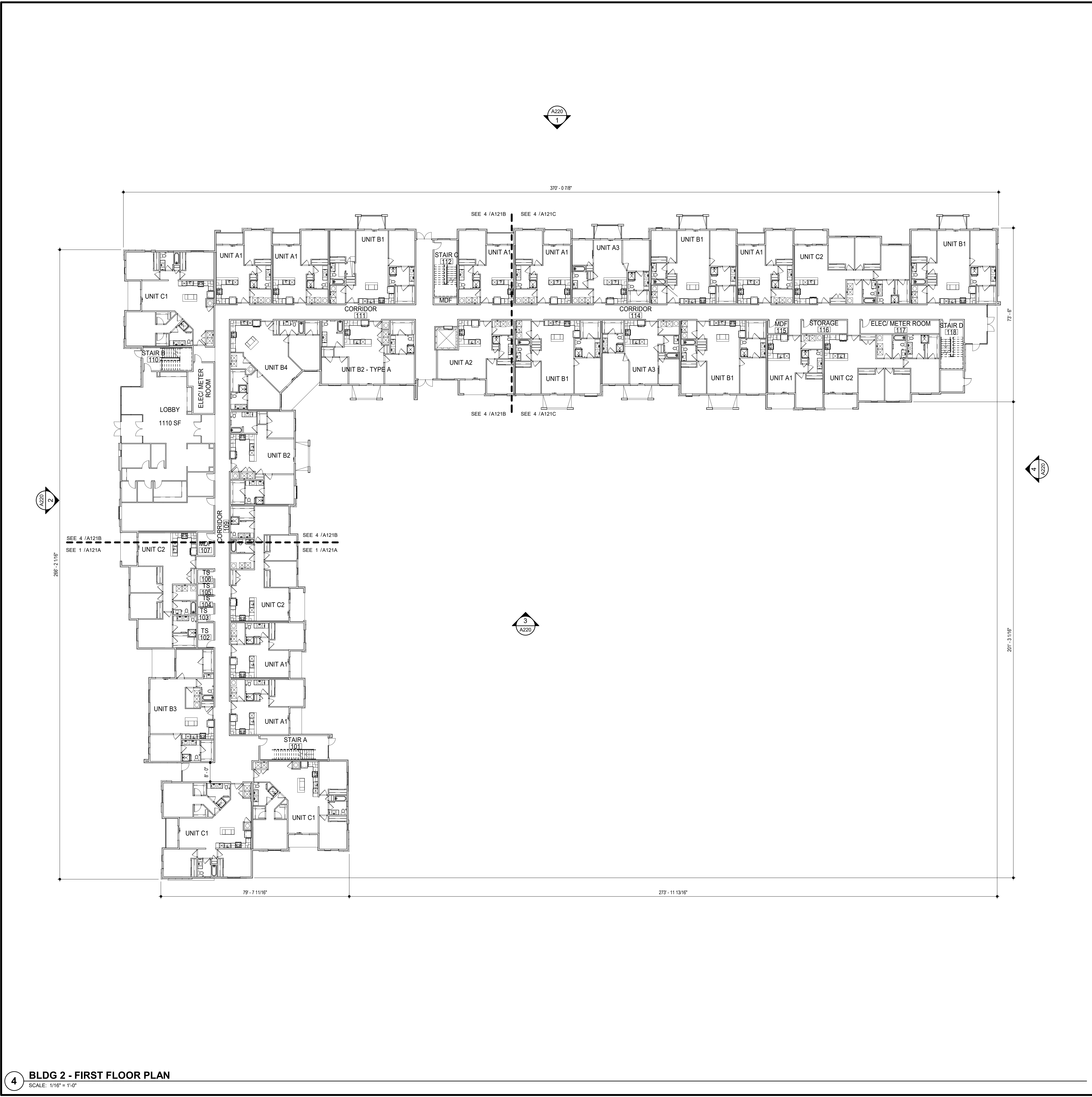
TR,i PROJECT NO.

20-001

SHEET NO.

A110

BLDG 1 - ROOF PLAN



4 BLDG 2 - FIRST FLOOR PLAN
SCALE: 1/16" = 1'-0"

GENERAL NOTES

- A. DIMENSIONS ARE TO FACE OF STUD OR FACE OF MASONRY.
- B. FOR DOOR SCHEDULE SEE SHEET A040 XXX
- C. FOR WINDOW SCHEDULE SEE SHEET A060 (X)
- D. FOR PARTITION TYPES SEE SHEET A030 (X)
- E. FOR UNIT INTERIOR PARTITION TYPES AND LOCATIONS REFER TO UNIT SHEETS (A400 THROUGH A4XX).
- F. GENERAL CONTRACTOR WILL FURNISH & INSTALL 5 LB MULTIPURPOSE DRY CHEMICAL 2A-10B C RATED FIRE EXTINGUISHERS w/ MOUNTING BRACKETS & ACCESSORIES @ 4'-0" A.F.F. AS REQUIRED BY GOVERNMENTAL AUTHORITIES. MAXIMUM TRAVEL DISTANCE OF 75'-0" FOR PLACEMENT IN PUBLIC SPACES AND CORRIDORS. A MINIMUM RATED 1A-10B C FIRE EXTINGUISHER TO BE PROVIDED IN EACH UNIT.
- G. CONTROL JOINTS SHOULD BE SPACED IN GYPSUM WALL BOARD TO LIMIT EXPANSES TO 30'-0" MAXIMUM. CONTROL JOINTS ARE RECOMMENDED AT DOOR JAMBS EXTENDING FROM DOOR HEAD TO CEILING. CEILING GYPSUM BOARD CONTROL JOINTS SHOULD LIMIT THE CEILING AREA TO 2,500 SF MAX. AND 50'-0" IN EITHER DIRECTION. CONTROL JOINT SHOULD BE INSTALLED WHERE THERE IS A CHANGE IN DIRECTION IN CEILING FRAMING/FURRING OR SPACE CONTROL JOINTS AT THE CEILING AND WALL PER THE MANUFACTURER'S RECOMMENDED INSTALLATION GUIDELINES. CEILING AND WALL CONTROL JOINTS ARE TO ALIGN AT ALL INTERSECTIONS WHERE APPLICABLE TO FORM A CONTINUOUS CONTROL JOINT. ENSURE THAT CONTROL JOINTS ARE LOCATED AT STRUCTURAL CONSTRUCTION JOINTS AND AT THE TOP AND BOTTOM OF ALL INTERIOR RAMPS.
- H. UNLESS NOTED OTHERWISE, CORRIDOR PARTITION TYPE IN RESIDENTIAL AREA TO BE [B2] UNIT ENTRY RECESS PARTITION TYPE TO BE [A2] AND PARTITION TYPE BEHIND REFRIGERATOR TO BE [B1]
- I. COORDINATE LOCATION OF BEARING WALLS INSIDE DWELLING UNITS WITH UNIT PLANS.
- J. REFER TO LIFE SAFETY PLANS FOR ADDITIONAL INFORMATION ON FIRE RATED PARTITION LOCATIONS.
- K. NO PENETRATIONS WITHIN 4" OF FIRE WALLS. VERIFY IN FIELD.
- L. IT IS THE GENERAL CONTRACTOR'S RESPONSIBILITY TO COORDINATE, LOCATE AND CONFIRM ALL FLOOR SINK, UNDERGROUND / OVERHEAD PLUMBING AND ELECTRICAL STUB-UPS, SPOT GRADING AT PERIMETER FOUNDATIONS WHICH ARE IMPLIED OR UNDEPIED.
- M. THE ARCHITECT ASSUMES THE GENERAL CONTRACTOR HAS INCLUDED IN HIS BID THE HIGHEST QUALITY AND GREATEST QUANTITY FOR THE PURPOSE OF RESOLVING ANY CONFLICTS IN THE CONSTRUCTION DOCUMENTS WHICH ARE IMPLIED OR UNDEPIED.
- N. * ASSUMED FINISH FLOOR ELEVATION = 100.00" VERIFY ACTUAL FINISH FLOOR ELEVATION WITH CIVIL DRAWINGS.
- O. GENERAL CONTRACTOR TO CAULK AND SEAL EXPANSION JOINTS AT ALL EXTERIOR/INTERIOR CONCRETE - SEE MASONRY SPECIFICATIONS.
- P. GENERAL CONTRACTOR SHALL VERIFY GOVERNMENTAL REQUIREMENTS PRIOR TO BID AND INCLUDE IN BID ALL COSTS ASSOCIATED WITH FIRE ALARM SYSTEM INCLUDING AUDIOVISUAL DEVICES AND PULL STATIONS WHERE REQUIRED.
- Q. FIRE RETARDANT TREATED WOOD PERMITTED TO BE USED IN LOCATIONS SPECIFIED IN TABLE 602, NOTE D AND SECTION 603.2 AND 2310.0. VERIFY SECTIONS IN 20XX IBC.
- R. FOR RETAIL SHOPS, COORDINATE WITH G.C. AND OWNER FOR FINAL TENANT DOOR QUANTITIES AND LOCATIONS.
- S. FLOOR COVERING: CONTRACTOR TO PROVIDE STEEL TRAWLED CONCRETE FLOOR THROUGHOUT (AS INDICATED ON FLOOR PLAN) READY TO RECEIVE TENANTS FINISHED FLOOR.

FLOOR PLAN KEYED NOTES

- 1. FINISH FLOOR ELEVATION ASSUMED ELEVATION 100'-0" TYPICAL U.N.O. RE: CIVIL DRAWINGS FOR ALL GRADE INFORMATION.
- 2. 5" CONCRETE FLOOR SLAB WITH 6"x6" - W1.4xW1.4 W.W.F. ON 10 MIL POLY FILM VAPOR BARRIER ON 4" GRANULAR FILL. RE: STRUCTURAL DWGS.
- 3.

**PRELIMINARY, NOT
FOR CONSTRUCTION,
RECORDING
PURPOSES OR
IMPLEMENTATION**

ARCHITECT	ARCHITECT		GENERAL CONTRACTOR		MECHANICAL ENGINEER		PLUMBING ENGINEER		ELECTRICAL ENGINEER	
	STRUCTURAL ENGINEER	CIVIL ENGINEER	GENERAL CONTRACTOR	ENGINEER	PLUMBING	ELECTRICAL	GENERAL CONTRACTOR	ENGINEER	PLUMBING	ELECTRICAL
TR,i ARCHITECTS	STRUCTURAL	CIVIL	GENERAL CONTRACTOR	ENGINEER	PLUMBING	ELECTRICAL				

Summit at West Pryor - Phase II
LEE'S SUMMIT, MISSOURI



TRi Architects
1790 S. Brentwood Blvd.
St. Louis, Missouri 63144
T: 314-305-9750
www.triarchitects.com
© Copyright 2021

DATE: 12.02.2020

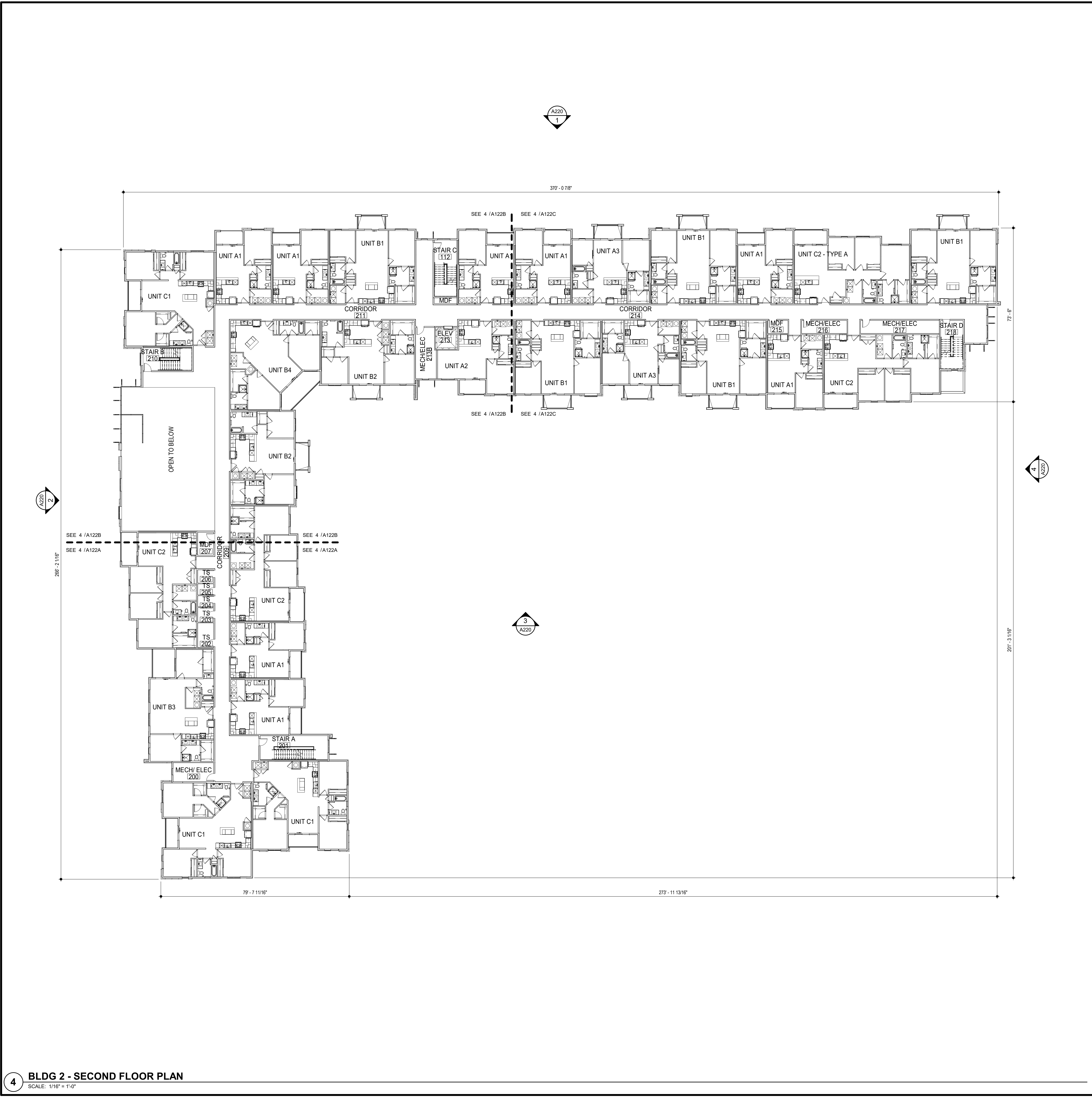
REVISIONS

DWG BY MKSS

TR,i PROJECT NO. 20-001

SHEET NO.

A121
BLDG 2 - FIRST FLOOR PLAN



4 BLDG 2 - SECOND FLOOR PLAN
SCALE: 1/16" = 1'-0"

GENERAL NOTES

- A. DIMENSIONS ARE TO FACE OF STUD OR FACE OF MASONRY.
- B. FOR DOOR SCHEDULE SEE SHEET A040 XXX
- C. FOR WINDOW SCHEDULE SEE SHEET A060 (X)
- D. FOR PARTITION TYPES SEE SHEET A030 (X)
- E. FOR UNIT INTERIOR PARTITION TYPES AND LOCATIONS REFER TO UNIT SHEETS (A400 THROUGH A4XX).
- F. GENERAL CONTRACTOR WILL FURNISH & INSTALL 5 LB MULTIPURPOSE DRY CHEMICAL 2A-10B C RATED FIRE EXTINGUISHERS w/ MOUNTING BRACKETS & ACCESSORIES @ 4'-0" A.F.F. AS REQUIRED BY GOVERNMENTAL AUTHORITIES. MAXIMUM TRAVEL DISTANCE OF 75'-0" FOR PLACEMENT IN PUBLIC SPACES AND CORRIDORS. A MINIMUM RATED 1A-10B C FIRE EXTINGUISHER TO BE PROVIDED IN EACH UNIT.
- G. CONTROL JOINTS SHOULD BE SPACED IN GYPSUM WALL BOARD TO LIMIT EXPANSES TO 30'-0" MAXIMUM. CONTROL JOINTS ARE RECOMMENDED AT DOOR JAMBS EXTENDING FROM DOOR HEAD TO CEILING. CEILING GYPSUM BOARD CONTROL JOINTS SHOULD LIMIT THE CEILING AREA TO 2,500 SF MAX. AND 50'-0" IN EITHER DIRECTION. CONTROL JOINT SHOULD BE INSTALLED WHERE THERE IS A CHANGE IN DIRECTION IN CEILING FRAMING/FURRING OR SPACE CONTROL JOINTS AT THE CEILING AND WALL PER THE MANUFACTURER'S RECOMMENDED INSTALLATION GUIDELINES. CEILING AND WALL CONTROL JOINTS ARE TO ALIGN AT ALL INTERSECTIONS WHERE APPLICABLE TO FORM A CONTINUOUS CONTROL JOINT. ENSURE THAT CONTROL JOINTS ARE LOCATED AT STRUCTURAL CONSTRUCTION JOINTS AND AT THE TOP AND BOTTOM OF ALL INTERIOR RAMPS.
- H. UNLESS NOTED OTHERWISE, CORRIDOR PARTITION TYPE IN RESIDENTIAL AREA TO BE [B2] UNIT ENTRY RECESS PARTITION TYPE TO BE [A2] AND PARTITION TYPE BEHIND REFRIGERATOR TO BE [B1]
- I. COORDINATE LOCATION OF BEARING WALLS INSIDE DWELLING UNITS WITH UNIT PLANS.
- J. REFER TO LIFE SAFETY PLANS FOR ADDITIONAL INFORMATION ON FIRE RATED PARTITION LOCATIONS.
- K. NO PENETRATIONS WITHIN 4" OF FIRE WALLS. VERIFY IN FIELD.
- L. IT IS THE GENERAL CONTRACTOR'S RESPONSIBILITY TO COORDINATE, LOCATE AND CONFIRM ALL FLOOR SINK, UNDERGROUND / OVERHEAD PLUMBING AND ELECTRICAL STUB-UPS, SPOT GRADING AT PERIMETER FOUNDATIONS WHICH ARE IMPLIED OR UNDEPICTED.
- M. THE ARCHITECT ASSUMES THE GENERAL CONTRACTOR HAS INCLUDED IN HIS BID THE HIGHEST QUALITY AND GREATEST QUANTITY FOR THE PURPOSE OF RESOLVING ANY CONFLICTS IN THE CONSTRUCTION DOCUMENTS WHICH ARE IMPLIED OR UNDEPICTED.
- N. * ASSUMED FINISH FLOOR ELEVATION = 100.00" VERIFY ACTUAL FINISH FLOOR ELEVATION WITH CIVIL DRAWINGS.
- O. GENERAL CONTRACTOR TO CAULK AND SEAL EXPANSION JOINTS AT ALL EXTERIOR/INTERIOR CONCRETE - SEE MASONRY SPECIFICATIONS.
- P. GENERAL CONTRACTOR SHALL VERIFY GOVERNMENTAL REQUIREMENTS PRIOR TO BID AND INCLUDE IN BID ALL COSTS ASSOCIATED WITH FIRE ALARM SYSTEM INCLUDING AUDIOVISUAL DEVICES AND PULL STATIONS WHERE REQUIRED.
- Q. FIRE RETARDANT TREATED WOOD PERMITTED TO BE USED IN LOCATIONS SPECIFIED IN TABLE 602, NOTE D AND SECTION 603.2 AND 2310.0. VERIFY SECTIONS IN 20XX IBC.
- R. FOR RETAIL SHOPS, COORDINATE WITH G.C. AND OWNER FOR FINAL TENANT DOOR QUANTITIES AND LOCATIONS.
- S. FLOOR COVERING: CONTRACTOR TO PROVIDE STEEL TRAWLED CONCRETE FLOOR THROUGHOUT (AS INDICATED ON FLOOR PLAN) READY TO RECEIVE TENANT'S FINISHED FLOOR.

FLOOR PLAN KEYED NOTES

- 1. FINISH FLOOR ELEVATION ASSUMED ELEVATION 100'-0" TYPICAL U.N.O. RE: CIVIL DRAWINGS FOR ALL GRADE INFORMATION.
- 2. 5" CONCRETE FLOOR SLAB WITH 6"x6" - W1.4xW1.4 W.W.F. ON 10 MIL POLY FILM VAPOR BARRIER ON 4" GRANULAR FILL. RE: STRUCTURAL DWGS.
- 3.

**PRELIMINARY, NOT
FOR CONSTRUCTION,
RECORDING
PURPOSES OR
IMPLEMENTATION**

ARCHITECT	STRUCTURAL ENGINEER	CIVIL ENGINEER	GENERAL CONTRACTOR	MECHANICAL ENGINEER	PLUMBING ENGINEER	ELECTRICAL ENGINEER
TR,i ARCHITECTS	STRUCTURAL	CIVIL	GENERAL CONTRACTOR	ENGINEER	PLUMBING	ELECTRICAL

Summit at West Pryor - Phase II
LEE'S SUMMIT, MISSOURI



TRi Architects
1790 S. Brentwood Blvd.
St. Louis, Missouri 63144
© Copyright 2021
www.triarchitects.com
T: 314-305-9750

DATE: 12.02.2020

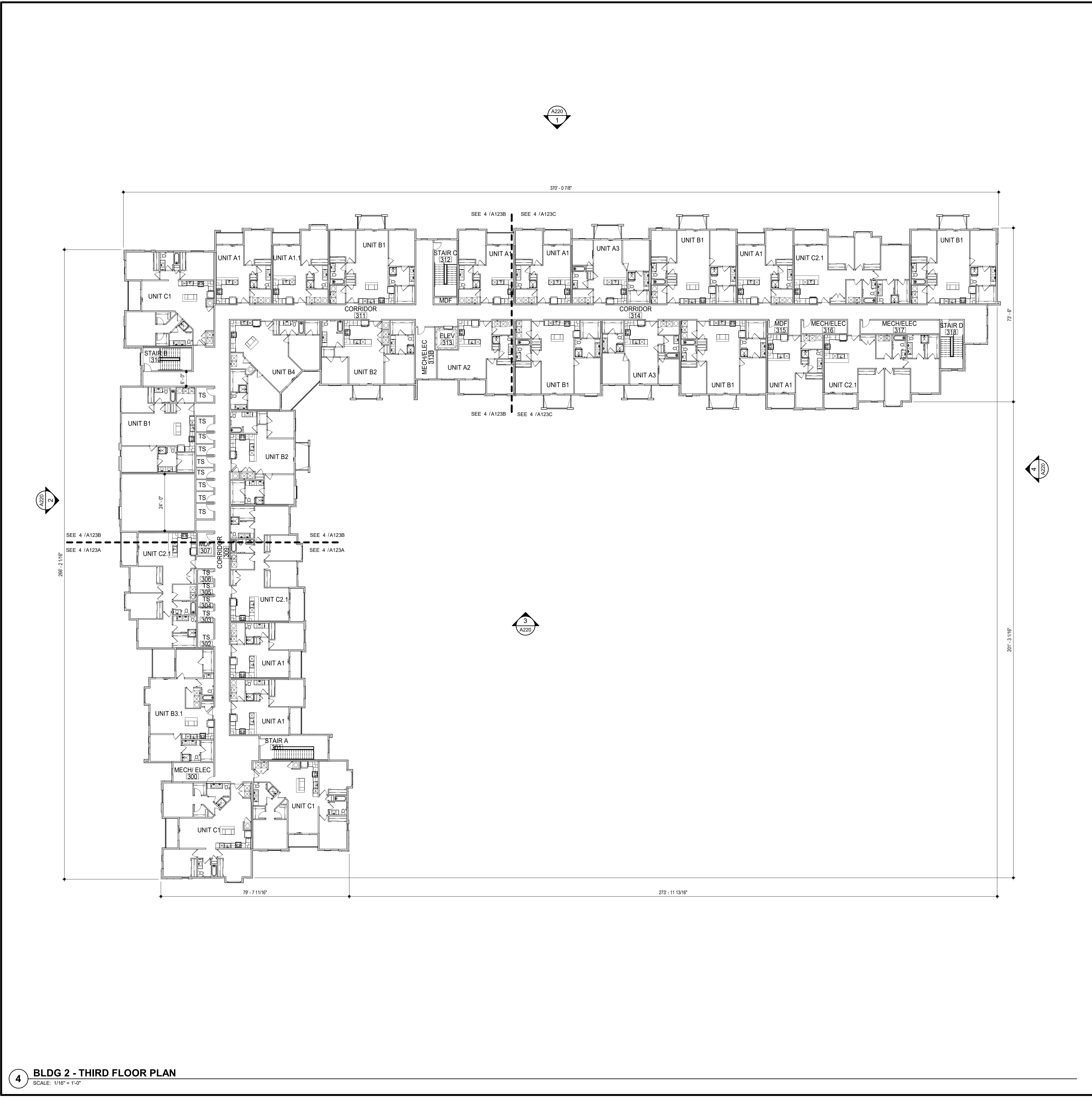
REVISIONS

DWG BY MKSS

TR,i PROJECT NO. 20-001

SHEET NO.

A122
BLDG 2 - SECOND FLOOR PLAN



GENERAL NOTES

- A. DIMENSIONS ARE TO FACE OF STUD OR FACE OF MASONRY.
- B. FOR DOOR SCHEDULE SEE SHEET A040 XXX
- C. FOR WINDOW SCHEDULE SEE SHEET A060 (X)
- D. FOR PARTITION TYPES SEE SHEET A030 X
- E. FOR UNIT INTERIOR PARTITION TYPES AND LOCATIONS REFER TO UNIT SHEETS (A400 THROUGH A4XX).
- F. GENERAL CONTRACTOR WILL FURNISH & INSTALL 5 LB MULTIPURPOSE DRY CHEMICAL 2A-10B C RATED FIRE EXTINGUISHERS w/ MOUNTING BRACKETS & ACCESSORIES @ 4'-0" A.F.F. AS REQUIRED BY GOVERNMENTAL AUTHORITIES. MAXIMUM TRAVEL DISTANCE OF 75'-0" FOR PLACEMENT IN PUBLIC SPACES AND CORRIDORS. A MINIMUM RATED 1A-10B C FIRE EXTINGUISHER TO BE PROVIDED IN EACH UNIT.
- G. CONTROL JOINTS SHOULD BE SPACED IN GYPSUM WALL BOARD TO LIMIT EXPANSES TO 30'-0" MAXIMUM. CONTROL JOINTS ARE RECOMMENDED AT DOOR JAMBS EXTENDING FROM DOOR HEAD TO CEILING. CEILING GYPSUM BOARD CONTROL JOINTS SHOULD LIMIT THE CEILING AREA TO 2,500 SF MAX. AND 50'-0" IN EITHER DIRECTION. CONTROL JOINT SHOULD BE INSTALLED WHERE THERE IS A CHANGE IN DIRECTION IN CEILING FRAMING/FURRING OR SPACE CONTROL JOINTS AT THE CEILING AND WALL PER THE MANUFACTURER'S RECOMMENDED INSTALLATION GUIDELINES. CEILING AND WALL CONTROL JOINTS ARE TO ALIGN AT ALL INTERSECTIONS WHERE APPLICABLE TO FORM A CONTINUOUS CONTROL JOINT. ENSURE THAT CONTROL JOINTS ARE LOCATED AT STRUCTURAL CONSTRUCTION JOINTS AND AT THE TOP AND BOTTOM OF ALL INTERIOR RAMPS.
- H. UNLESS NOTED OTHERWISE, CORRIDOR PARTITION TYPE IN RESIDENTIAL AREA TO BE B2 UNIT ENTRY RECESS PARTITION TYPE TO BE A2 AND PARTITION TYPE BEHIND REFRIGERATOR TO BE B1
- I. COORDINATE LOCATION OF BEARING WALLS INSIDE DWELLING UNITS WITH UNIT PLANS.
- J. REFER TO LIFE SAFETY PLANS FOR ADDITIONAL INFORMATION ON FIRE RATED PARTITION LOCATIONS.
- K. NO PENETRATIONS WITHIN 4' OF FIRE WALLS. VERIFY IN FIELD.
- L. IT IS THE GENERAL CONTRACTOR'S RESPONSIBILITY TO COORDINATE, LOCATE AND CONFIRM ALL FLOOR SINK, UNDERGROUND / OVERHEAD PLUMBING AND ELECTRICAL STUB-UPS, SPOT GRADING AT PERIMETER FOUNDATIONS WHICH ARE IMPLIED OR UNDEPICTED.
- M. THE ARCHITECT ASSUMES THE GENERAL CONTRACTOR HAS INCLUDED IN HIS BID THE HIGHEST QUALITY AND GREATEST QUANTITY FOR THE PURPOSE OF RESOLVING ANY CONFLICTS IN THE CONSTRUCTION DOCUMENTS WHICH ARE IMPLIED OR UNDEPICTED.
- N. * ASSUMED FINISH FLOOR ELEVATION = 100.00" VERIFY ACTUAL FINISH FLOOR ELEVATION WITH CIVIL DRAWINGS.
- O. GENERAL CONTRACTOR TO CAULK AND SEAL EXPANSION JOINTS AT ALL EXTERIOR/INTERIOR CONCRETE - SEE MASONRY SPECIFICATIONS.
- P. GENERAL CONTRACTOR SHALL VERIFY GOVERNMENTAL REQUIREMENTS PRIOR TO BID AND INCLUDE IN BID ALL COSTS ASSOCIATED WITH FIRE ALARM SYSTEM INCLUDING AUDIOVISUAL DEVICES AND PULL STATIONS WHERE REQUIRED.
- Q. FIRE RETARDANT TREATED WOOD PERMITTED TO BE USED IN LOCATIONS SPECIFIED IN TABLE 602, NOTE D AND SECTION 603.2 AND 2310.0. VERIFY SECTIONS IN 20XX IBC.
- R. FOR RETAIL SHOPS, COORDINATE WITH G.C. AND OWNER FOR FINAL TENANT DOOR QUANTITIES AND LOCATIONS.
- S. FLOOR COVERING: CONTRACTOR TO PROVIDE STEEL TRAWLED CONCRETE FLOOR THROUGHOUT (AS INDICATED ON FLOOR PLAN) READY TO RECEIVE TENANT'S FINISHED FLOOR.

FLOOR PLAN KEYED NOTES

1. FINISH FLOOR ELEVATION ASSUMED ELEVATION 100'-0" TYPICAL U.N.O. RE: CIVIL DRAWINGS FOR ALL GRADE INFORMATION.
2. 5" CONCRETE FLOOR SLAB WITH 6"x6" - W1.4xW1.4 W.W.F. ON 10 MIL POLY FILM VAPOR BARRIER ON 4" GRANULAR FILL. RE: STRUCTURAL DWGS.
- 3.

PRELIMINARY, NOT
FOR CONSTRUCTION,
RECORDING
PURPOSES OR
IMPLEMENTATION

ARCHITECT
STRUCTURAL ENGINEER
CIVIL ENGINEER
GENERAL CONTRACTOR
MECHANICAL ENGINEER
PLUMBING ENGINEER
ELECTRICAL ENGINEER

TR,i ARCHITECTS
STRUCTURAL
CIVIL
GENERAL CONTRACTOR
ENGINEER
PLUMBING
ELECTRICAL

Summit at West Pryor - Phase II
LEE'S SUMMIT, MISSOURI



TR,i Architects
1790 S. Brentwood Blvd.
St. Louis, Missouri 63144
T: 314-305-9750
www.triarchitects.com
© Copyright 2021

DATE: 12.02.2020

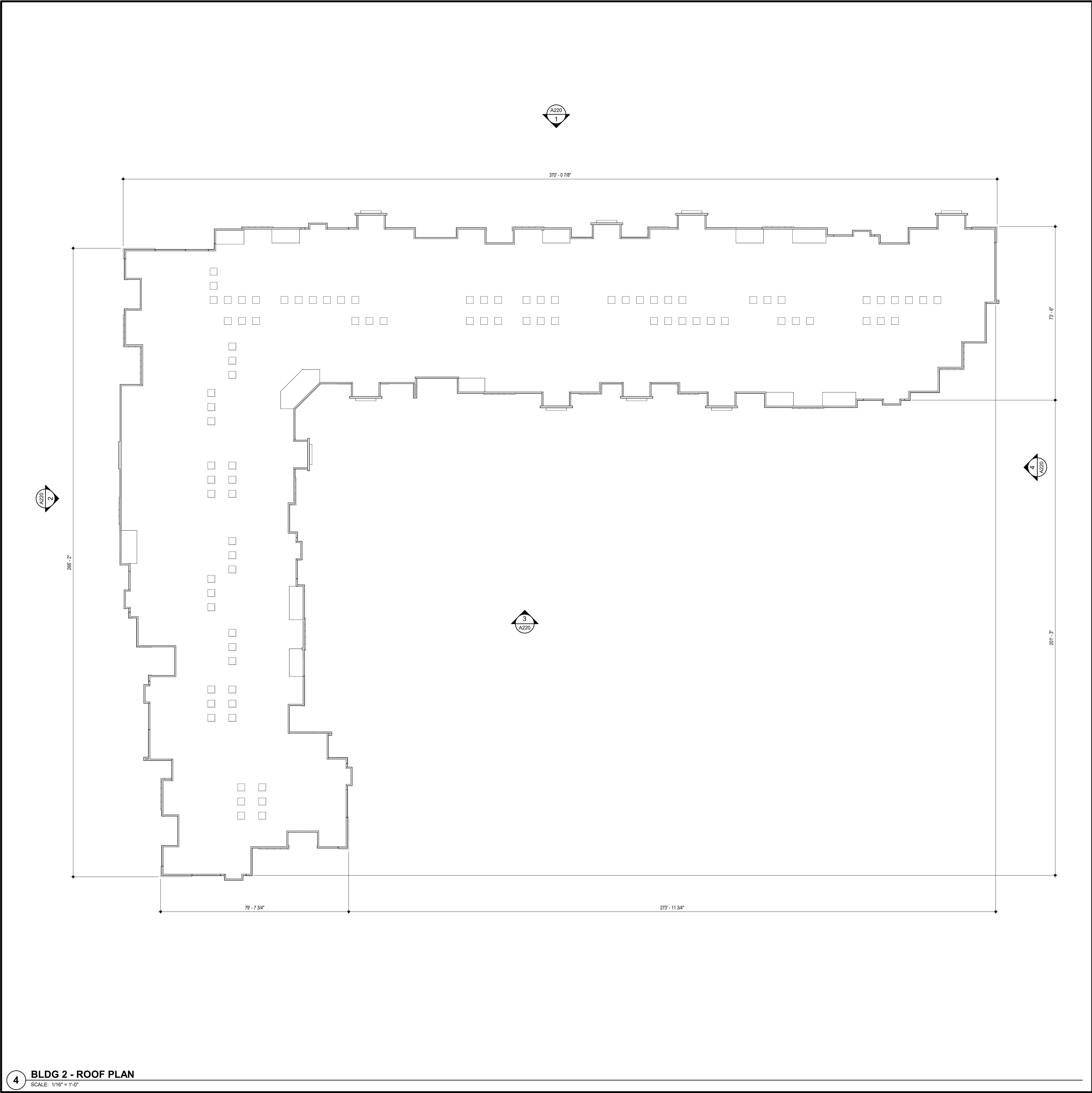
REVISIONS

DWG BY MKSS

TR,i PROJECT NO. 20-001

SHEET NO.

A123
BLDG 2 - THIRD FLOOR PLAN



4 BLDG 2 - ROOF PLAN
SCALE: 1/16" = 1'-0"

ROOF GENERAL NOTES

- A. VERIFY LOCATIONS OF ALL ROOF PENETRATIONS WITH STRUCTURAL, M.E.P. AND ARCHITECTURAL DRAWINGS.
- B. EXHAUST FANS AND VENTS TO BE LOCATED A MINIMUM OF 10'-0" FROM RTU'S.
- C. ALL ROOF EQUIPMENT TO BE MOUNTED ON CURBS. MECHANICAL SUBCONTRACTOR TO COORDINATE INSTALLATION AND ACCEPTANCE OF PREFABRICATED CURBS AND PENETRATIONS WITH ROOF MEMBRANE MANUFACTURER. GENERAL CONTRACTOR TO PROVIDE ALL REQUIRED BLOCKING, NAILING, ETC. AS REQUIRED FOR A WATERTIGHT BUILDING.
- D. IT IS THE GENERAL CONTRACTOR'S RESPONSIBILITY TO COORDINATE THE INSTALLATION OF ALL FLASHING, BLOCKING, NAILERS, INSULATION STOPS, CRICKETS, ETC. NECESSARY FOR A COMPLETE, WARRANTED AND WATERTIGHT INSTALLATION.
- E. ALL ROOF SLOPES ARE TO HAVE A MINIMUM OF 1/4" FALL WHERE CRICKETS AND VALLEYS OCCUR. CRICKETS ARE TO BE PROVIDED WITH SUFFICIENT DEPTH AND SLOPE TO ACCOMMODATE A MINIMUM 1/4" PER FOOT FALL AT VALLEY.

FLOOR PLAN KEYED NOTES

- 1. FINISH FLOOR ELEVATION ASSUMED ELEVATION 100'-0" TYPICAL U.N.O. RE: CIVIL DRAWINGS FOR ALL GRADE INFORMATION.
- 2. 5" CONCRETE FLOOR SLAB WITH 6"x6" - W1.4xW1.4 W.W.F. ON 10 MIL POLY FILM VAPOR BARRIER ON 4" GRANULAR FILL. RE: STRUCTURAL DWGS.
- 3.

PRELIMINARY, NOT
FOR CONSTRUCTION,
RECORDING
PURPOSES OR
IMPLEMENTATION

ARCHITECT	STRUCTURAL ENGINEER	CIVIL ENGINEER	GENERAL CONTRACTOR	MECHANICAL ENGINEER	PLUMBING ENGINEER	ELECTRICAL ENGINEER
TR,i ARCHITECTS	STRUCTURAL	CIVIL	GENERAL CONTRACTOR	ENGINEER	PLUMBING	ELECTRICAL

Summit at West Pryor - Phase II
LEE'S SUMMIT, MISSOURI



TRI Architects
1700 S. Brentwood Blvd.
St. Louis, Missouri 63144
© Copyright 2021
T: 314-305-9750
www.triarchitects.com

DATE: 12.02.2020

REVISIONS

DWG BY MKSS
TR,i PROJECT NO. 20-001
SHEET NO.

A124
BLDG 2 - ROOF PLAN