

PROJECT SCHEDULE

PROJECT:

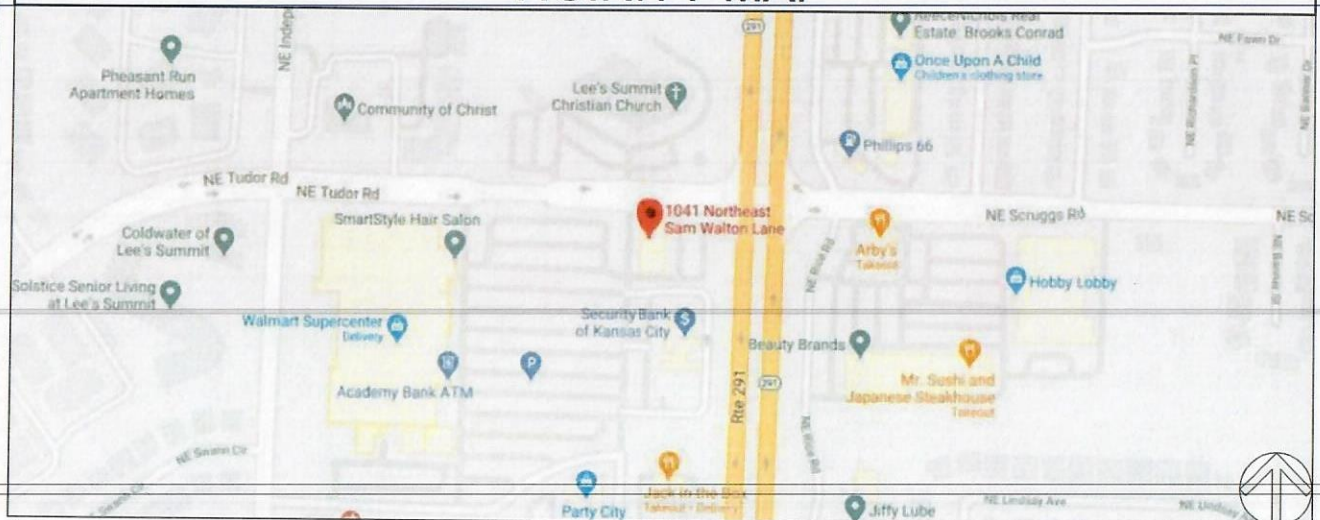
EYEMART

WALMART SUPERCENTER
1041 NE SAM WALTON LANE
LEE'S SUMMIT, MO 64086

REVISIONS

#	DATE	DB	NOTES
R1	11/10/2020	MAF	ADDED "EYE EXAMS" SIGN TO STORE FRONT; CHANGED SIDE "OPTOMETRIST" SIGN TO "EYE EXAMS".
R2	1/12/2021	MAF	REDUCED SIZE OF BANNER TO UNDER 40SF.
R3	1/13/2021	MAF	BACKGROUND PANELS & RETURNS NOW OFF-WHITE IN COLOR; RACEWAYS ARE NOW WIREWAYS.
R4	1/29/2021	MAF	UPDATED W/ ACTUAL STORE/OFFICE HOURS; NEW DR. LOGO.

VICINITY MAP



TRIANGLE
SIGN SERVICES

CLIENT & LOCATION

EYEMART

WALMART SUPERCENTER
1041 NE SAM WALTON LANE
LEE'S SUMMIT, MO 64086

LEAD NO.
195389 R4

DATE
11/9/2020

REVIEWED BY

REVISION

SHEET NO.

SALESMAN
S. ALTSHULER

DRAWN BY
MAF

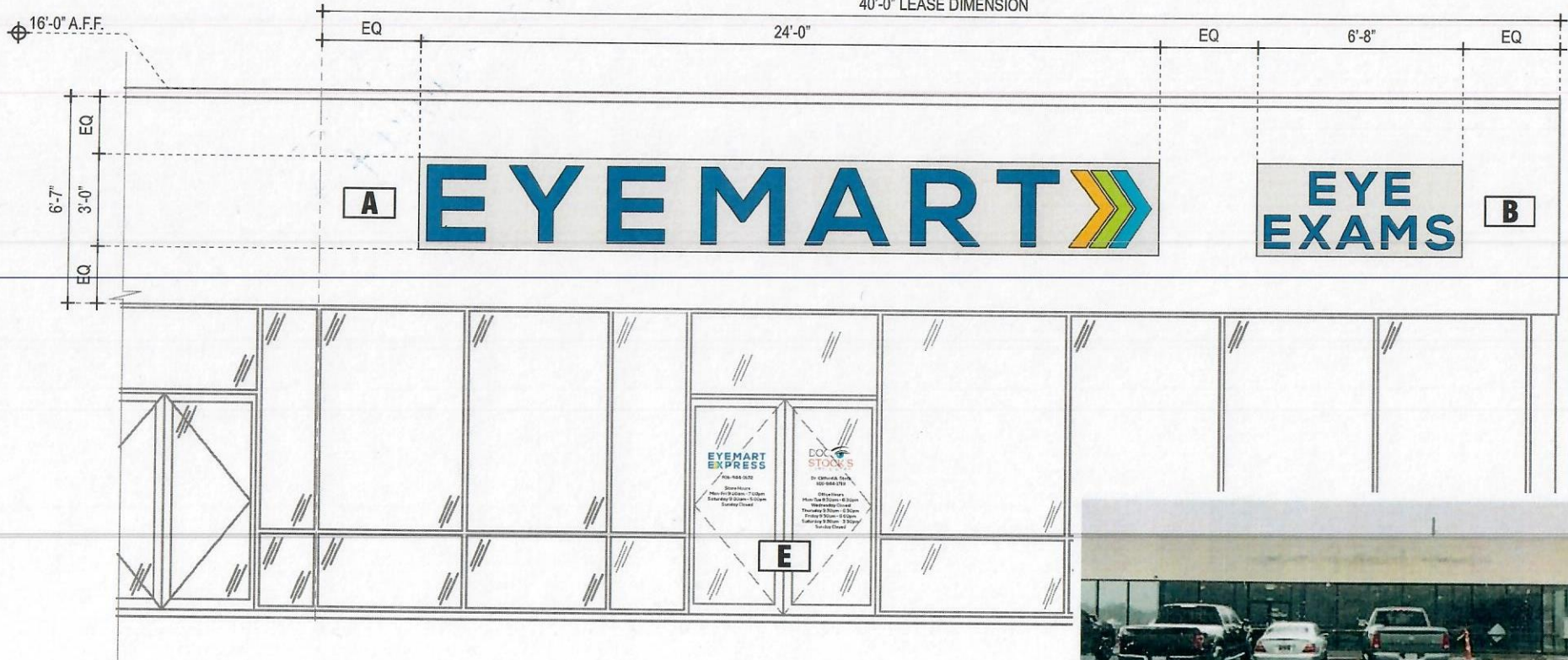
SEG. NO.

1 of 34

STOREFRONT ELEVATION - RTE 291

SCALE: 1/4" = 1'-0"

40'-0" LEASE DIMENSION



TRIANGLE
SIGN SERVICES

CLIENT & LOCATION

EYEMART

WALMART SUPERCENTER
1041 NE SAM WALTON LANE
LEE'S SUMMIT, MO 64086

LEAD NO.

195389 R6

DATE

11/9/2020

REVIEWED BY

REVISION

SALESMAN

S. ALTSHULER

DRAWN BY

MAF

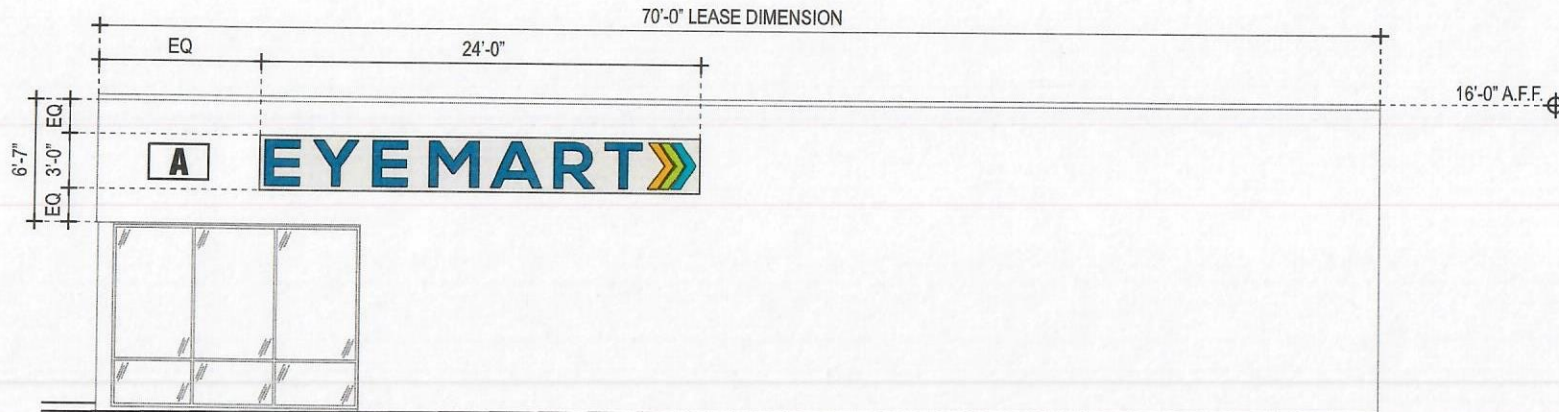
SEG. NO.

SHEET NO.

2 of 35

SIDE ELEVATION - NE TUDOR ROAD

SCALE: 1/8" = 1'-0"



TRIANGLE
SIGN SERVICES

CLIENT & LOCATION

EYEMART

WALMART SUPERCENTER
1041 NE SAM WALTON LANE
LEE'S SUMMIT, MO 64086

LEAD NO.
195389 R6

DATE
11/9/2020

REVIEWED BY

REVISION

SHEET NO.

SALESMAN
S. ALTSHULER

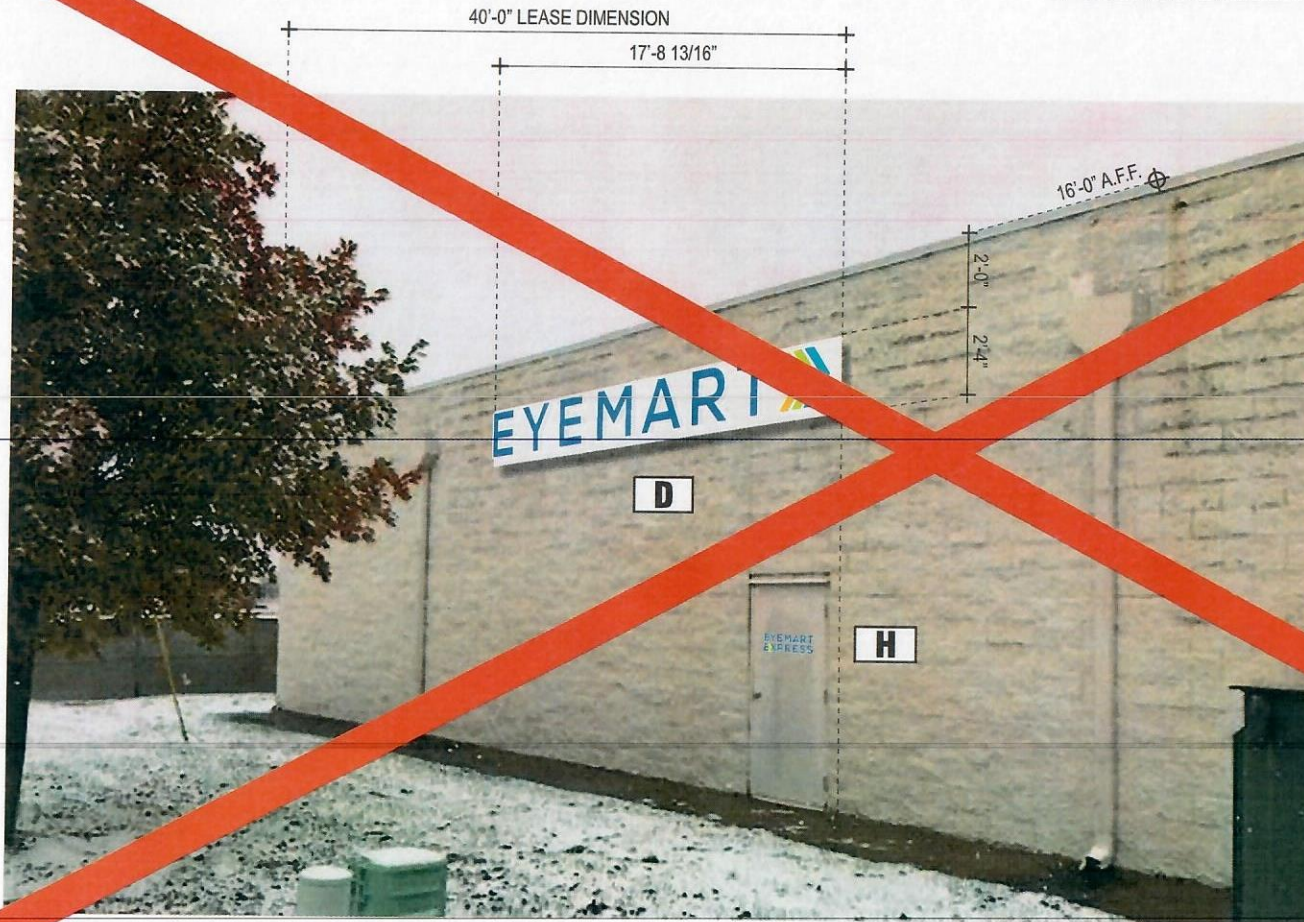
DRAWN BY
MAF

SEG. NO.

3 of 35

REAR ELEVATION - FACING WALMART SUPERCENTER

SCALE: N.T.S.



TRIANGLE
SIGN SERVICES

CLIENT & LOCATION

EYEMART

WALMART SUPERCENTER
1041 NE SAM WALTON LANE
LEE'S SUMMIT, MO 64086

LEAD NO.
195389 R6

DATE
11/9/2020

REVIEWED BY

REVISION

SALESMAN
S. ALTSHULER

DRAWN BY
MAF

SEG. NO.

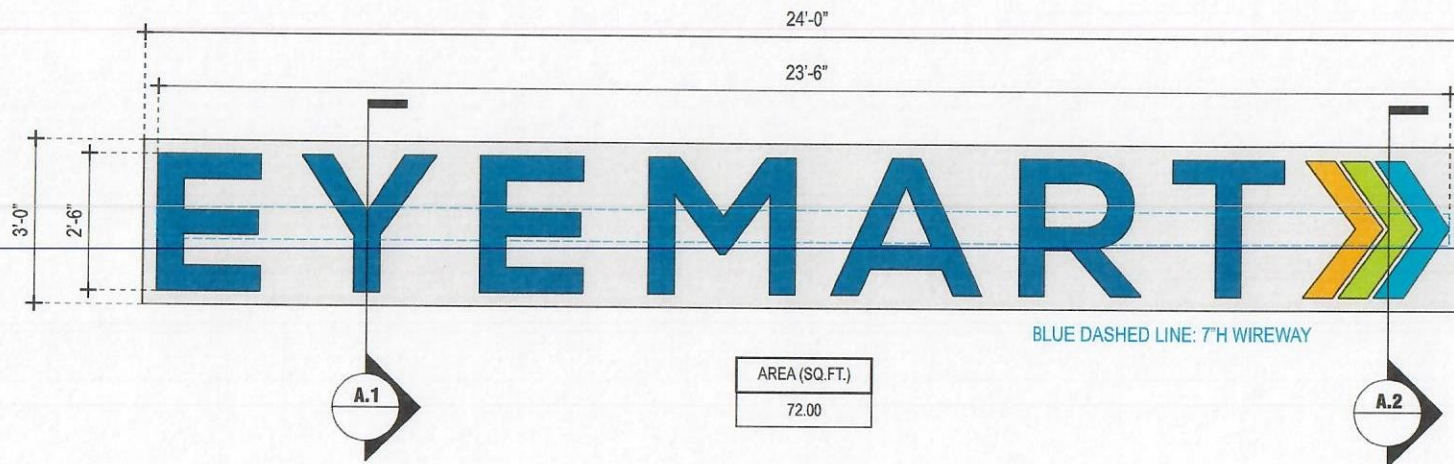
SHEET NO.

4 of 35

A**INTERNALLY ILLUMINATED FACE-LIT CHANNEL LETTERS W/ BACKGROUND PANEL ON WIREWAY**

SCALE: 3/8" = 1'-0"

QTY.: TWO (2)

**TRIANGLE**
SIGN SERVICES

CLIENT & LOCATION

EYEMARTWALMART SUPERCENTER
1041 NE SAM WALTON LANE
LEE'S SUMMIT, MO 64086LEAD NO.
195389 R6DATE
11/9/2020

REVIEWED BY

REVISION

SHEET NO.

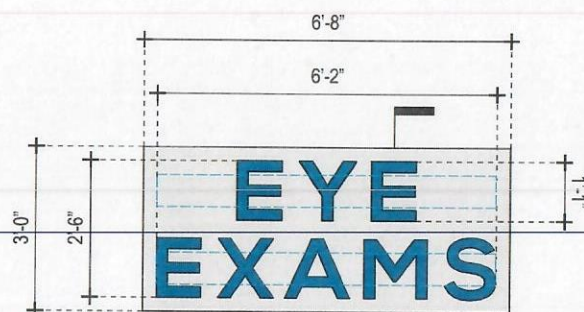
SALESMAN
S. ALTSHULERDRAWN BY
MAF

SEG. NO.

B**INTERNALLY ILLUMINATED FACE-LIT CHANNEL LETTERS W/ BACKGROUND PANEL ON WIREWAY**

SCALE: 3/8" = 1'-0"

QTY.: ONE (1)



BLUE DASHED LINE: 7TH WIREWAYS (TOP ACCESS FOR TOP RACEWAY/BOTTOM ACCESS FOR BOTTOM WIREWAY)

AREA (SQ.FT.)
20.00



OFF-WHITE

PMS 2935U

TRIANGLE
 SIGN SERVICES

CLIENT & LOCATION

EYEMART

 WALMART SUPERCENTER
 1041 NE SAM WALTON LANE
 LEE'S SUMMIT, MO 64086

 LEAD NO.
 195389 R6

 DATE
 11/9/2020

REVIEWED BY

REVISION

SHEET NO.

 SALESMAN
 S. ALTSHULER

 DRAWN BY
 MAF

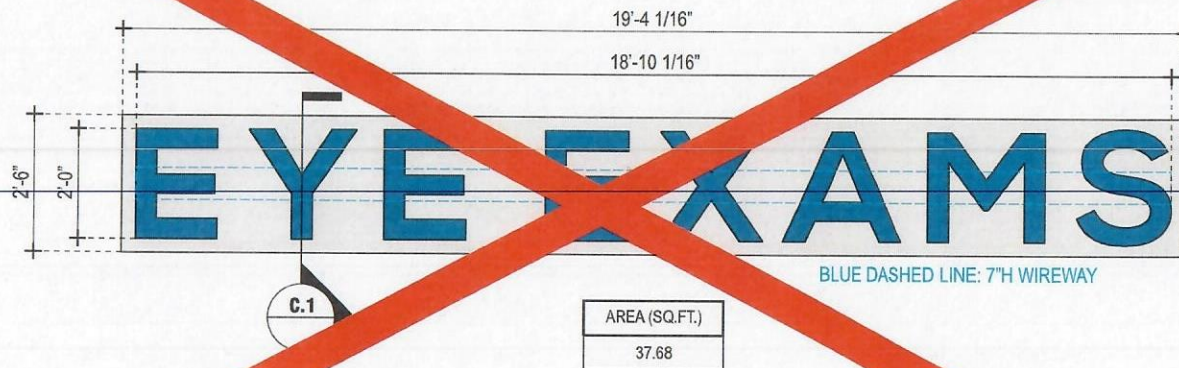
SEG. NO.

6 of 35

INTERNALLY ILLUMINATED FACE-LIT CHANNEL LETTERS W/ BACKGROUND PANEL ON WIREWAY

8'-0" / 8" = 1'-0"

QTY.: ONE (1)



OFF-WHITE

PMS 2935U

TRIANGLE
SIGN SERVICES

CLIENT & LOCATION

EYEMART

WALMART SUPERCENTER
1041 NE SAM WALTON LANE
LEE'S SUMMIT, MO 64086

LEAD NO.
195389 R6

DATE
11/9/2020

REVIEWED BY

REVISION

SHEET NO.

SALESMAN
S. ALTSHULER

DRAWN BY
MAF

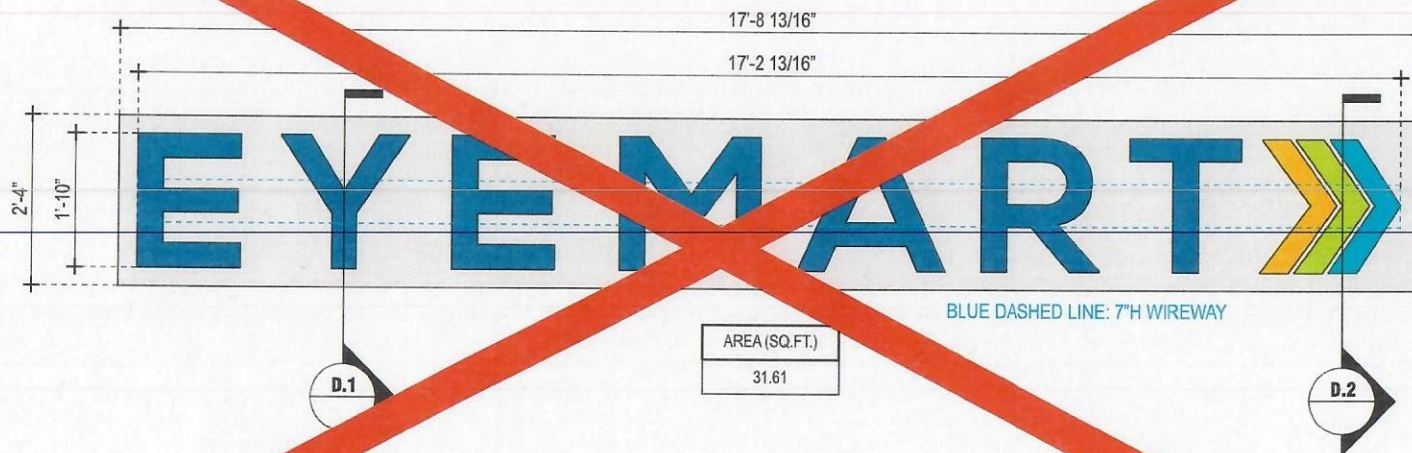
SEG. NO.

7 of 35

INTERNALLY ILLUMINATED FACE-LIT CHANNEL LETTERS W/ BACKGROUND PANEL ON WIREWAY

Scale: 1/2" = 1'-0"

QTY.: ONE (1)



TRIANGLE
SIGN SERVICES

CLIENT & LOCATION

EYEMART

WALMART SUPERCENTER
1041 NE SAM WALTON LANE
LEE'S SUMMIT, MO 64086

LEAD NO.
195389 R6

SALESMAN
S. ALTSHULER

DATE
11/9/2020

DRAWN BY
MAF

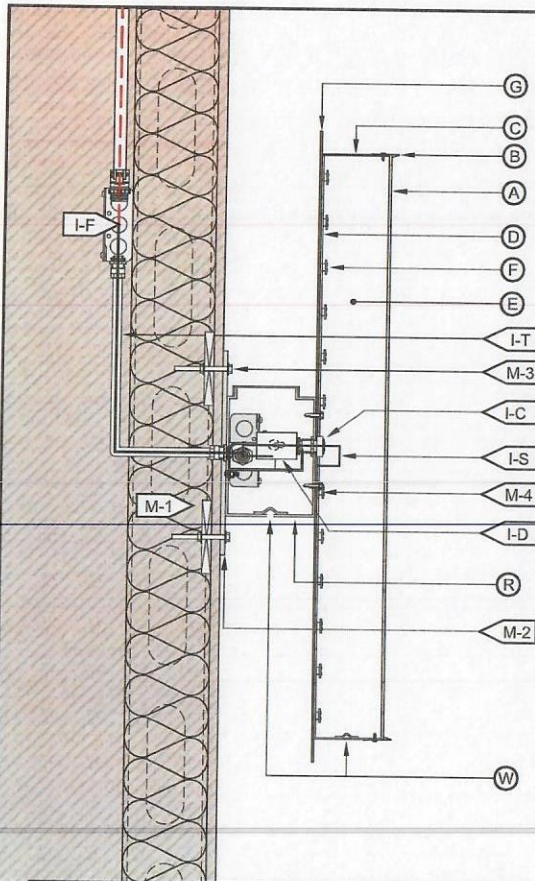
REVIEWED BY

SEG. NO.

REVISION

SHEET NO.

8 of 35



A.1 B.1 C.1 D.1

SCALE: N.T.S.

FACE-LIT CHANNEL LETTERS / LED ILLUMINATION / EXTERIOR INSTALL / WIREWAY MOUNTED / BG PANEL

(A) FACE	
MATERIAL:	3/16" WHITE PLEX #2447.
VINYL:	3M PERFORATED DAY/NIGHT EFFECT; 1ST SURFACE
COLOR:	PAINT TO MATCH PMS 2935U
(B) TRIMCAP	
SIZE / FINISH	1" / MATCH RETURNS.
(C) RETURN	
DEPTH:	5".
MATERIAL:	0.040" ALUM.
COLOR/ FINISH:	OFF-WHITE/ SATIN.
(D) BACK	
MATERIAL:	3MM ACM.
COLOR/ FINISH:	OFF-WHITE/ SATIN.
(E) INSIDE OF CAN	
COLOR:	PRE-COAT WHITE.
(F) ILLUMINATION	
TYPE/COLOR:	LEDs/6500K WHITE
(G) BG PANEL	
MATERIAL:	1/8" ALUMINUM
COLOR/FINISH:	OFF-WHITE/SATIN
	OFF-WHITE
	PMS 2935U

(I) WIRING	
I-C:	BUSHING.
I-D:	DISCONNECT SWITCH @ SIDE OF RACEWAY.
I-F:	SEE ELEC. NOTE. 120V PRIMARY IN J-BOX BY OTHERS.
I-T:	14awg FEED IN 1/2"Ø SEAL-TITE w/ 1/2" CONNECTORS.
I-J:	STANDARD JUNCTION BOX.
I-H:	W.P. BOX @ DISCONNECT SWITCH.
I-P:	LIQUID TIGHT CONNECTOR.
I-S:	U.L. APPROVED CLASS II LOW VOLTAGE WIRE.
	(ALL CONNECTIONS TO BE IN WATERPROOF BOXES).
(J) POWER SUPPLY	
TYPE:	LED POWER SUPPLY HOUSE IN RACEWAY.
VOLTAGE:	120V.
(R) WIREWAY	
MATERIAL:	7" x 4" ALUM. LED EXTRUSION RACEWAY, TOP ACCESS.
COLOR/ FINISH:	PAINT TO MATCH EXISTING FASCIA FINISH.
(M) MOUNTING	
M-1:	SEE MOUNTING NOTE. REQ'D. BLOCKING BY OTHERS.
M-2:	MOUNTING BARS 2"W. x 1/4" ALUM. w/ 3/4"Ø MNTG. HOLE.
M-3:	3/8"Ø ALLTHREAD, NUT & WASHERS INTO BLOCKING BEYOND.
M-4:	SELF-TAPPING SCREW.
(W) WEEP HOLE	
TYPE:	1/4"Ø w/ COVERS.

**120V
INSTALL**

1. CUSTOMER G.C. TO PROVIDE ADEQUATE WOOD OR MTL. BLOCKING IN CORRELATION W/ FACADE FRAMING AS REQUIRED.
2. INSTALLER IS TO V.I.F. & PROVIDE THE PROPER NON-CORROSIVE MOUNTING HARDWARE TO ENSURE SAFE INSTALLATION.
3. ALL EXTERIOR FACADE PENETRATIONS TO BE WATERTIGHT.
4. INSTALLATION TO MEET CURRENT N.E.C., U.L. & LOCAL CODES. LOCATION OF THE DISCONNECT SWITCH AFTER INSTALLATION SHALL COMPLY WITH ARTICLE 600.6(A) (1) OF THE NATION ELECTRICAL CODE

ELECTRICAL

1. ALL ELECTRICAL COMPONENTS TO BE U.L. APPROVED.
2. CUSTOMER IS RESPONSIBLE FOR ONE (1) 120v/ 20a DEDICATED CIRCUIT w/ GROUND PER SIGN TO WITHIN 6' OF SIGN.
3. THIS SIGN IS INTENDED TO BE INSTALLED IN ACCORDING W/ THE REQUIREMENTS OF ARTICLE 600 OF THE NATIONAL ELECTRICAL CODE AND/OR OTHER APPLICABLE LOCAL CODES. THIS INCLUDES PROPER GROUNDING & BONDING OF THE SIGN.

FABRICATOR

1. PLACEMENT OF LIGHTING ELEMENTS FOR OPTIMUM ILLUMINATION OF SIGN TO BE DETERMINED IN PRODUCTION.
2. MANUFACTURER & U.L. LABELS TO BE APPLIED & VISIBLE FROM THE GROUND. LOCATED ON THE LAST CHANNEL LETTER OR END OF THE SIGN BOX/FREESTANDING SIGN



**ALL ELECTRICAL
COMPONENTS ARE
TO BE UL APPROVED**

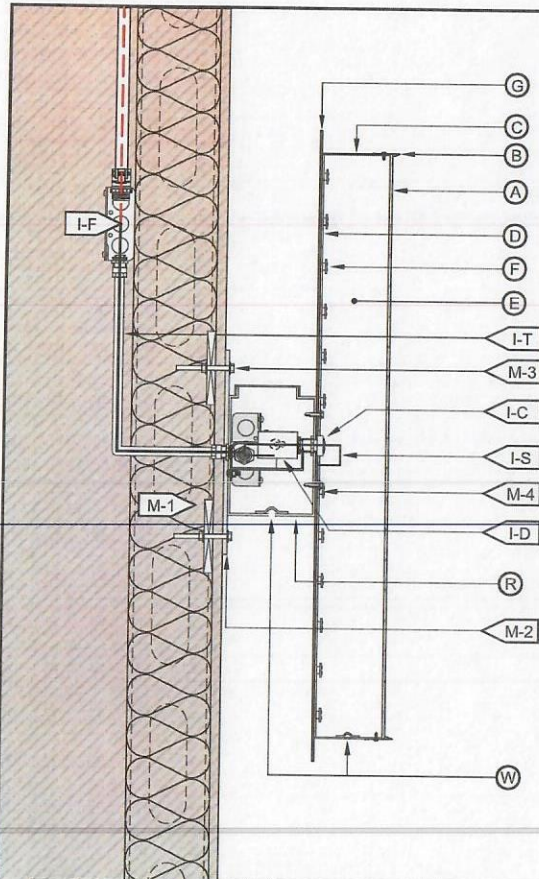
**TRIANGLE
SIGN SERVICES**

CLIENT & LOCATION

EYEMART

WALMART SUPERCENTER
1041 NE SAM WALTON LANE
LEE'S SUMMIT, MO 64086

LEAD NO. 195389 R6	DATE 11/9/2020	REVIEWED BY	REVISION	SHEET NO. 9 of 35
SALESMAN S. ALTSHULER	DRAWN BY MAF	SEG. NO.		



"LOGO" FACE-LIT CHANNEL LETTER / LED ILLUMINATION / EXTERIOR INSTALL / WIREWAY MOUNTED / BG PANEL

A.2 D.2

SCALE: N.T.S.

(A) FACE

MATERIAL:	3/16" WHITE PLEX #2447.
VINYL:	TRANSLUCENT
COLOR:	PRINT TO MATCH PMS 2935U, 115U, 312U & 381U

(B) TRIMCAP

SIZE / FINISH	1" / MATCH RETURNS.
---------------	---------------------

(C) RETURN

DEPTH:	5".
MATERIAL:	0.040" ALUM.
COLOR/ FINISH:	OFF-WHITE/ SATIN.

(D) BACK

MATERIAL:	3MM ACM.
COLOR/ FINISH:	OFF-WHITE/ SATIN.

(E) INSIDE OF CAN

COLOR:	PRE-COAT WHITE.
--------	-----------------

(F) ILLUMINATION

TYPE/COLOR:	LEDS/6500K WHITE
-------------	------------------

(G) BG PANEL

MATERIAL:	1/8" ALUMINUM
COLOR/FINISH:	OFF-WHITE/SATIN

(I) WIRING

I-C:	BUSHING.
I-D:	DISCONNECT SWITCH @ SIDE OF RACEWAY.
I-F:	SEE ELEC. NOTE. 120V PRIMARY IN J-BOX BY OTHERS.
I-T:	14awg FEED IN 1/2"Ø SEAL-TITE w/ 1/2" CONNECTORS.
I-J:	STANDARD JUNCTION BOX.
I-H:	W.P. BOX @ DISCONNECT SWITCH.
I-P:	LIQUID TIGHT CONNECTOR.
I-S:	U.L. APPROVED CLASS II LOW VOLTAGE WIRE.
(ALL CONNECTIONS TO BE IN WATERPROOF BOXES).	

(J) POWER SUPPLY

TYPE:	LED POWER SUPPLY HOUSE IN RACEWAY.
VOLTAGE:	120V.

(R) WIREWAY

MATERIAL:	7" x 4" ALUMINUM EXTRUSION, TOP ACCESS.
COLOR/ FINISH:	MATCH FASCIA.

(M) MOUNTING

M-1:	SEE MOUNTING NOTE. REQ'D. BLOCKING BY OTHERS.
M-2:	MOUNTING BARS 2"W. x 1/4" ALUM. w/ 3/4"Ø MNTG. HOLE.
M-3:	3/8"Ø ALLTHREAD, NUT & WASHERS INTO BLOCKING BEYOND.
M-4:	SELF-TAPPING SCREW.

(W) WEEP HOLE

TYPE:	1/4"Ø w/ COVERS.
-------	------------------

**120V
INSTALL**

1. CUSTOMER G.C. TO PROVIDE ADEQUATE WOOD OR MTL. BLOCKING IN CORRELATION W/ FACADE FRAMING AS REQUIRED.
2. INSTALLER IS TO V.I.F. & PROVIDE THE PROPER NON-CORROSIVE MOUNTING HARDWARE TO ENSURE SAFE INSTALLATION.
3. ALL EXTERIOR FACADE PENETRATIONS TO BE WATERTIGHT.
4. INSTALLATION TO MEET CURRENT N.E.C., U.L. & LOCAL CODES. LOCATION OF THE DISCONNECT SWITCH AFTER INSTALLATION SHALL COMPLY WITH ARTICLE 600.6(A) (1) OF THE NATION ELECTRICAL CODE

ELECTRICAL

1. ALL ELECTRICAL COMPONENTS TO BE U.L. APPROVED.
2. CUSTOMER IS RESPONSIBLE FOR ONE (1) 120w/ 20a DEDICATED CIRCUIT w/ GROUND PER SIGN TO WITHIN 6' OF SIGN.
3. THIS SIGN IS INTENDED TO BE INSTALLED IN ACCORDING W/ THE REQUIREMENTS OF ARTICLE 600 OF THE NATIONAL ELECTRICAL CODE AND/OR OTHER APPLICABLE LOCAL CODES. THIS INCLUDES PROPER GROUNDING & BONDING OF THE SIGN.

FABRICATOR

1. PLACEMENT OF LIGHTING ELEMENTS FOR OPTIMUM ILLUMINATION OF SIGN TO BE DETERMINED IN PRODUCTION.
2. MANUFACTURER & U.L. LABELS TO BE APPLIED & VISIBLE FROM THE GROUND. LOCATED ON THE LAST CHANNEL LETTER OR END OF THE SIGN BOX/FREESTANDING SIGN



**ALL ELECTRICAL
COMPONENTS ARE
TO BE UL APPROVED**

**TRIANGLE
SIGN SERVICES**

CLIENT & LOCATION

EYEMART

WALMART SUPERCENTER
1041 NE SAM WALTON LANE
LEE'S SUMMIT, MO 64086

LEAD NO.
195389 R6

DATE
11/9/2020

REVIEWED BY

REVISION

SHEET NO.

SALESMAN
S. ALTSHULER

DRAWN BY
MAF

SEG. NO.