

# HIGHLAND MEADOWS - 5TH PLAT

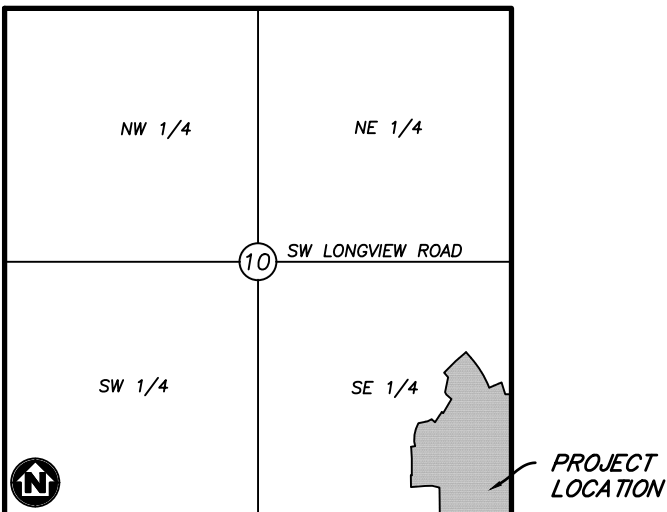
## WATER MAIN EXTENSION PLANS

LEE'S SUMMIT, JACKSON COUNTY, MISSOURI

SEC. 10, TWP. 47N, RNG. 32W

DATE: 2/26/2021

LOTS: 134-159 (26 TOTAL)



### VICINITY MAP

SECTION 10, TOWNSHIP 47, RANGE 32  
LEE'S SUMMIT, JACKSON COUNTY, MISSOURI  
NOT TO SCALE

### LEGAL DESCRIPTION:

THE EAST HALF OF THE SOUTHEAST QUARTER OF SECTION 10, TOWNSHIP 47 NORTH, RANGE 32 WEST, EXCEPT THOSE PARTS PLATTED AS HIGHLAND MEADOWS FIRST PLAT, HIGHLAND MEADOWS SECOND PLAT, HIGHLAND MEADOWS THIRD PLAT, HIGHLAND MEADOWS 4TH PLAT, SUBDIVISIONS IN LEE'S SUMMIT, JACKSON COUNTY, MISSOURI.



Know what's below.  
Call before you dig.



### UTILITY CONTACTS:

**SANITARY & WATER:**  
CITY OF LEE'S SUMMIT  
JEFF THORN  
220 SE GREEN STREET  
LEE'S SUMMIT, MO 64063  
PHONE (816) 969-1900

**STORMWATER:**  
CITY OF LEE'S SUMMIT  
PUBLIC WORKS  
220 SE GREEN STREET  
LEE'S SUMMIT, MO 64063  
PHONE (816) 969-1800

**STREETS:**  
CITY OF LEE'S SUMMIT  
MICHAEL PARK  
220 SE GREEN STREET  
LEE'S SUMMIT, MO 64063  
PHONE (816) 969-1900

**AT&T:**  
RONALD GIFFERT  
500 E 8TH STREET  
KANSAS CITY, MO 64106  
PHONE (816) 275-1550

**EVERGY:**  
DOUG DAVIN  
1300 SE HAMBLIN ROAD  
LEE'S SUMMIT, MO 64081  
PHONE (816) 347-4320

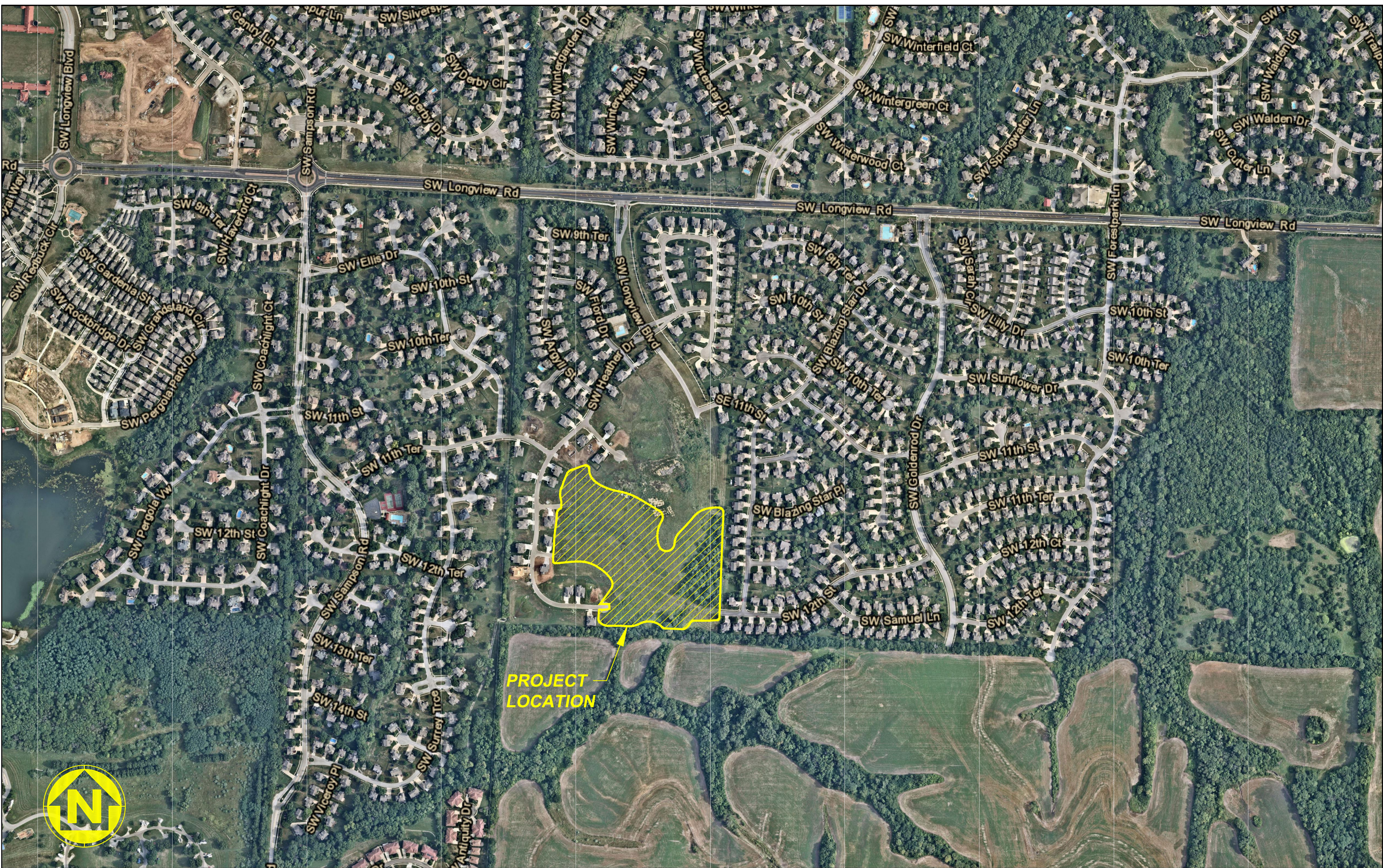
**MISSOURI GAS ENERGY:**  
RICHARD FROCK  
3025 SW CLOVER DRIVE  
LEE'S SUMMIT, MO 64082  
PHONE (816) 472-3489

### FEMA FLOOD INFORMATION:

THE SITE IS LOCATED IN ZONE X, AREA OF MINIMAL FLOOD HAZARD, PER FEMA FIRM MAP 29095C0418G: EFFECTIVE DATE OF JANUARY 20, 2017. NO LETTERS OF MAP AMENDMENT OR REVISIONS ARE BEING PROPOSED.

### BENCHMARK:

BM #1 N=999843.9665 E=2898946.9717 ELEV=935.04  
DESCRIPTION = "JA-148" REFERENCE SYSTEM MONUMENT



WATERSHED: LITTLE BLUE RIVER

DISTURBED AREA: 15.3 AC

### SURVEY CONTROL:

COORDINATES ARE BASED ON THE MISSOURI STATE PLANE COORDINATE SYSTEM, WEST ZONE, USING JACKSON COUNTY, MISSOURI, GEOGRAPHIC REFERENCE SYSTEM MONUMENT JA-148 (2003 ADJUSTMENT) AND ARE MODIFIED FROM GRIS COORDINATES TO GROUND COORDINATES BY UTILIZING A GRID SCALE FACTOR OF 0.9999020 AT REFERENCE MONUMENT JA-148.

PROJECT ELEVATIONS ARE BASED ON JACKSON COUNTY, MISSOURI, GEOGRAPHIC REFERENCE SYSTEM MONUMENT JA-148 (2003 ADJUSTMENT).

"JA-148" - STANDARD KC METRO ALUMINUM GRS DISK SET IN CONCRETE FLUSH WITH THE GROUND AND STAMPED "JA-148, 2002" LOCATED ON THE NORTH SIDE OF 3RD STREET, 12.5 FEET NORTH OF A SIDEWALK AND 102.5 FEET WEST OF THE PARKING LOT EXIT OF CEDAR CREEK ELEMENTARY SCHOOL.

### GENERAL NOTES:

- CONTRACTOR SHALL SATISFY THEMSELVES AS TO THE EXISTING CONDITIONS OF THE SITE AND HAVE ALL UTILITIES MARKED PRIOR TO COMMENCING CONSTRUCTION.
- CONTRACTOR SHALL POTHOLE ALL CONNECTION POINTS TO EXISTING UTILITIES AND POTENTIAL UTILITY CONFLICT LOCATIONS PRIOR TO ANY CONSTRUCTION ACTIVITIES. NOTIFY ENGINEER IMMEDIATELY IF CONFLICT OR DISCREPANCY EXISTS.
- CONTRACTOR SHALL PROTECT EXISTING STRUCTURES TO REMAIN FROM DAMAGE DURING DEMOLITION AND CONSTRUCTION. ANY DAMAGE SHALL BE REPAIRED/ REPLACED TO PRE-CONSTRUCTION CONDITION AT CONTRACTOR'S EXPENSE.
- THE CONTRACTOR SHALL CONTACT THE CITY'S DEVELOPMENT SERVICES ENGINEERING INSPECTION TO SCHEDULE A PRE-CONSTRUCTION MEETING WITH A FIELD ENGINEERING INSPECTOR PRIOR TO ANY LAND DISTURBANCE WORK AT (816) 969-1200.

### DEVELOPER:

BRAD KEMPF  
SUMMIT HOMES KC  
120 SE 30TH STREET  
LEE'S SUMMIT, MO 64082  
BRADLEY@SUMMITHOMESKC.COM  
(816) 927-9711

### CIVIL ENGINEER:

ZACH MYERS  
ANDERSON ENGINEERING, INC.  
941 W 141ST TERR  
KANSAS CITY, MO 64145  
ZMYERS@ANDERSONENGINEERINGINC.COM  
(816) 380-4821

**PREPARED & SUBMITTED BY:**  
ANDERSON ENGINEERING INC.  
KANSAS CITY, MISSOURI

ZACH MYERS, P.E.  
MISSOURI P.E. NO. 2012009232

DATE

### SHEET INDEX:

CVR - COVER SHEET  
C101 - WATER LINE PLAN & PROFILE  
C401 - WATER LINE DETAILS

### PROJECT SPECIFICATIONS:

THE SPECIFICATIONS FOR THIS PROJECT SHALL BE THE FOLLOWING:

- MOST CURRENT VERSION OF THE DESIGN AND CONSTRUCTION MANUAL OF THE CITY OF LEE'S SUMMIT AS ADOPTED BY ORDINANCE 5813.

THE STANDARD SPECIFICATIONS THROUGH AND INCLUDING THE LATEST AMENDMENTS SHALL BE PART OF THESE PROJECT DRAWINGS AND SPECIFICATIONS AND ARE INCORPORATED HEREIN BY REFERENCE. THE MORE STRINGENT OF THESE STANDARD SPECIFICATIONS AND THOSE PREPARED BY THE ENGINEER PREPARING THESE PLANS SHALL GOVERN.

### OIL AND GAS WELL NOTES:

NO ABANDONED OIL OR GAS WELLS HAVE BEEN IDENTIFIED WITHIN THE PROPERTY LIMITS OF THE PROPOSED CONSTRUCTION ACTIVITIES, PER THE MISSOURI DEPARTMENT OF NATURAL RESOURCES (MDNR) PERMITTED OIL AND GAS DATABASE, DATED JUNE 2, 2020.



ENGINEERS • SURVEYORS • LABORATORIES • DRILLING  
941 W. 141ST TERR • KANSAS CITY, MISSOURI 64145 • PHONE (816) 777-0400  
A LICENSED MISSOURI ENGINEERING & SURVEYING CORPORATION - LC 62

DRAWING INFO.		REVISIONS	
NO.	DESCRIPTION	BY	DATE
1.	REVISED PER CITY COMMENTS	GC	1/15/21
2.	REVISED PER CITY COMMENTS	GC	2/26/21
		CHECK BY:	ZM
		LICENSE NO.	FE-2012009232
		DATE:	12/2/2020
		ISSUED FOR:	FOR REVIEW
		JOB NUMBER:	20K010057
		MO COA NO.	00062

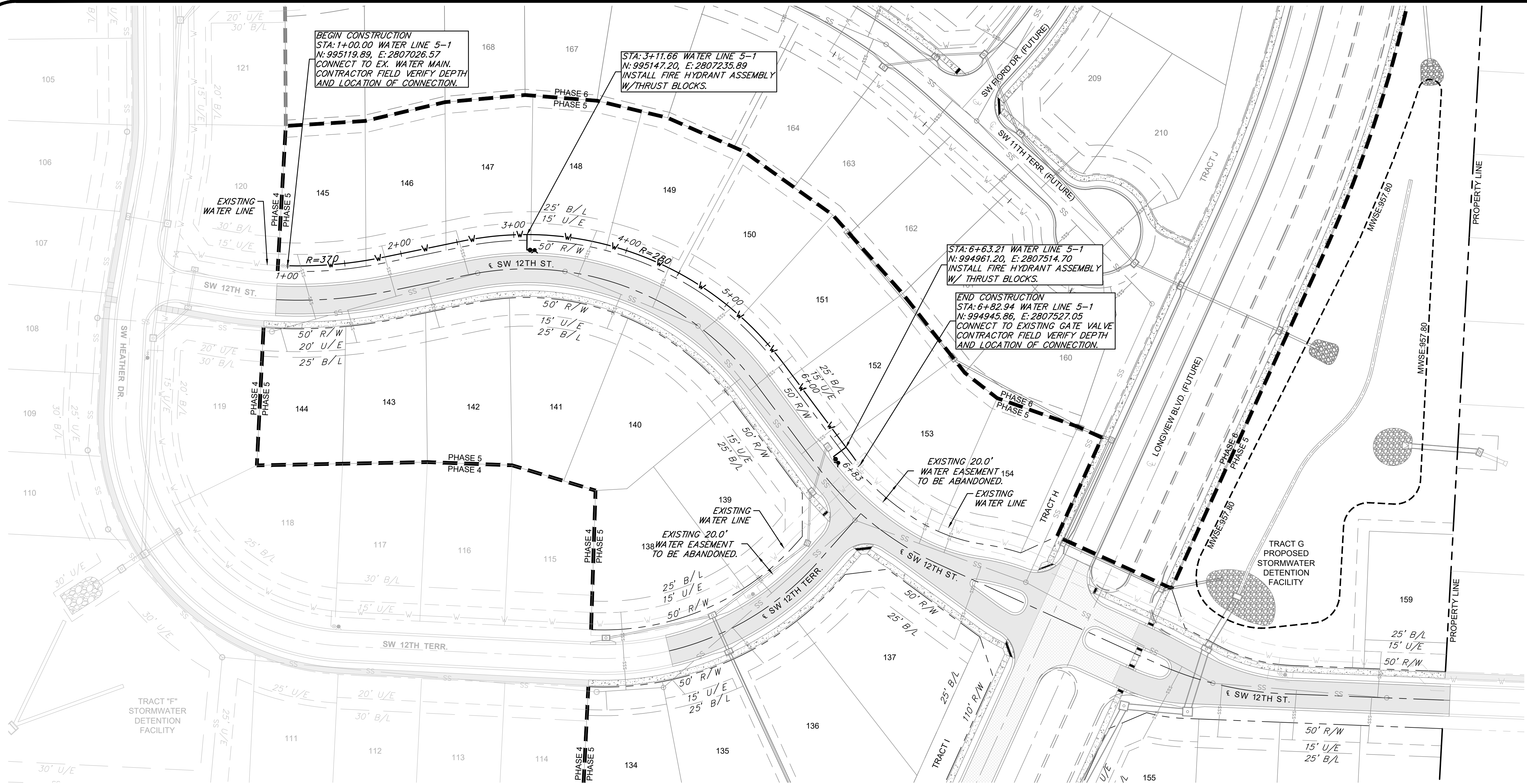
SUMMIT HOMES KC  
HIGHLAND MEADOWS - 5TH PLAT  
COVER SHEET  
S10, T47N, R32W  
LEE'S SUMMIT, JACKSON COUNTY, MISSOURI



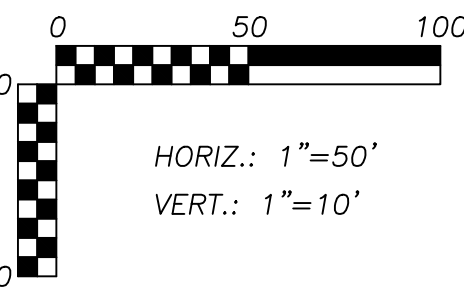
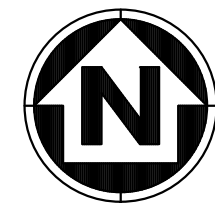
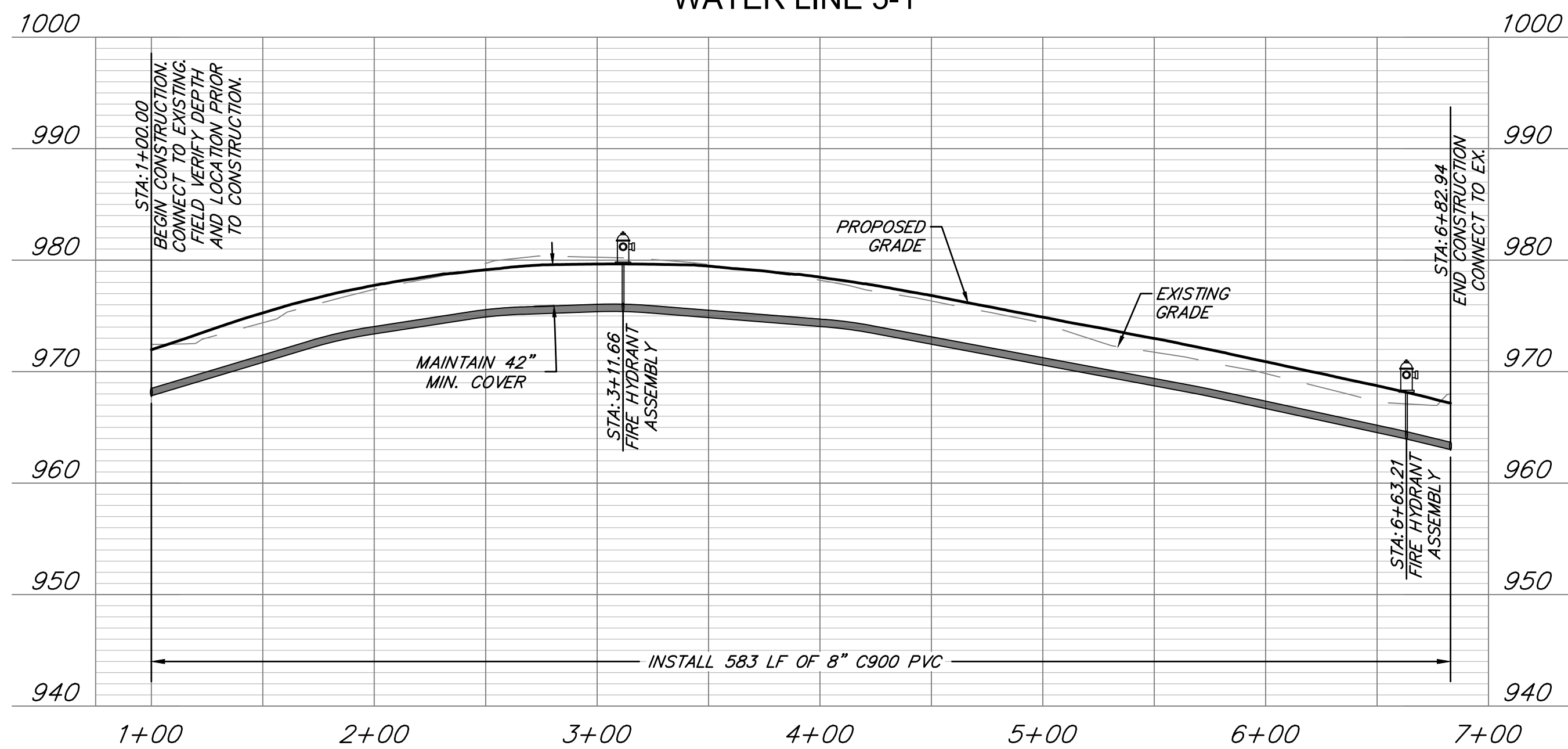
SHEET NUMBER

CVR  
1 OF 3

Feb 26, 2021 - 10:25am Plotted by: gte G:\Shared drives\KC10 - Land Development\Projects\2020\20K10057 Highland Meadows - 5th Plat\01 CIVIL\03-DWG\Bases\20K10057 - BASE - PROP - WATER.dwg Layout: WATER LINE PLAN & PROFILE



WATER LINE 5-1



WATER MAIN NOTES:

1. WATER MAINS AND SANITARY SEWERS SHALL HAVE AT LEAST 10' OF HORIZONTAL SEPARATION.
2. PROVIDE A MINIMUM OF 42" (3.5') OF COVER AND A MAXIMUM OF 84" (7') OF COVER OVER WATER MAIN.
3. CONTROLLED FILL: PRIOR TO INSTALLATION OF WATER PIPING IN FILL AREAS, FILL SHALL BE PLACED AND COMPACTED TO A MINIMUM 95% OF STANDARD PROCTOR DENSITY PER ASTM D 698 TO A MINIMUM DEPTH OF 6" ABOVE THE TOP OF PIPE.
4. CONCRETE THRUST BLOCKS SHALL BE INSTALLED AT ALL HORIZONTAL AND VERTICAL FITTING LOCATIONS IN ACCORDANCE WITH CITY OF LEE'S SUMMIT STANDARD DETAIL WAT-1 AND/OR WAT-2.
5. PROVIDE FITTINGS AND VALUES AS NECESSARY TO REMOVE AND RELOCATE FIRE HYDRANTS IF HYDRANTS ARE REUSED ON PROJECT.

LEGEND

	PROP. STREET C
	PROP. RIGHT-OF-WAY
	PROP. UTILITY EASEMENT
	PROP. BUILDING SETBACK
	PROP. LOT LINE
	PROP. WATER LINE
	PROP. SSWR
	PROP. SSWR SERVICE
	PROP. STREET PAVEMENT
	PROP. LONGVIEW BLVD.
	PROP. SIDEWALK
	EXISTING SIDEWALK

SUMMIT HOMES KC  
HIGHLAND MEADOWS - 5TH PLAT

WATER LINE PLAN & PROFILE



SHEET NUMBER  
**C101**  
2 OF 3

S10, T47N, R32W  
LEE'S SUMMIT, JACKSON COUNTY, MISSOURI

REVISIONS		DRAWING INFO.	
NO.	DESCRIPTION	BY	DATE
1.	REVISED PER CITY COMMENTS	GC	1/15/21
2.	REVISED PER CITY COMMENTS	GC	2/26/21
		DATE:	12/2/2020
		ISSUED FOR:	FOR REVIEW
		JOB NUMBER:	20K10057
		MO COA NO.	00062

**ANDERSON ENGINEERING**  
EMPLOYEE OWNED

**AE**

ENGINEERS • SURVEYORS • LABORATORIES • DRILLING  
941 W. 141ST TER • KANSAS CITY, MISSOURI 64145 • PHONE (816) 777-0400  
A LICENSED MISSOURI ENGINEERING & SURVEYING CORPORATION - LC 62

