

HIGHLAND MEADOWS - 5TH PLAT

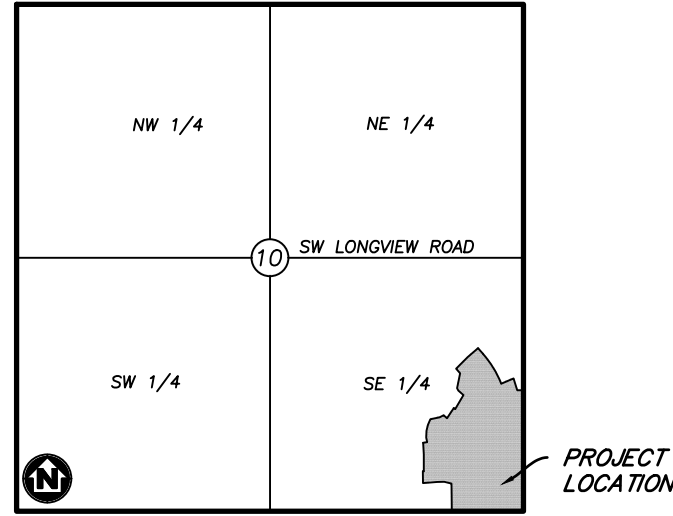
SANITARY SEWER EXTENSION PLANS

LEE'S SUMMIT, JACKSON COUNTY, MISSOURI

SEC. 10, TWP. 47N, RNG. 32W

DATE: 2/26/2021

LOTS: 134-159 (26 TOTAL)



VICINITY MAP

SECTION 10, TOWNSHIP 47, RANGE 32
LEE'S SUMMIT, JACKSON COUNTY, MISSOURI
NOT TO SCALE

LEGAL DESCRIPTION:

THE EAST HALF OF THE SOUTHEAST QUARTER OF SECTION 10, TOWNSHIP 47 NORTH, RANGE 32 WEST, EXCEPT THOSE PARTS PLATTED AS HIGHLAND MEADOWS FIRST PLAT, HIGHLAND MEADOWS SECOND PLAT, HIGHLAND MEADOWS THIRD PLAT, HIGHLAND MEADOWS 4TH PLAT, SUBDIVISIONS IN LEE'S SUMMIT, JACKSON COUNTY, MISSOURI.



Know what's below.
Call before you dig.



UTILITY CONTACTS:

SANITARY & WATER:
CITY OF LEE'S SUMMIT
JEFF THORN
220 SE GREEN STREET
LEE'S SUMMIT, MO 64063
PHONE (816) 969-1900

STORMWATER:
CITY OF LEE'S SUMMIT
PUBLIC WORKS
220 SE GREEN STREET
LEE'S SUMMIT, MO 64063
PHONE (816) 969-1800

STREETS:
CITY OF LEE'S SUMMIT
MICHAEL PARK
220 SE GREEN STREET
LEE'S SUMMIT, MO 64063
PHONE (816) 969-1900

AT&T:
RONALD GIFFERT
500 E 8TH STREET
KANSAS CITY, MO 64106
PHONE (816) 275-1550

EVERGY:
DOUG DAVIN
1300 SE HAMBLIN ROAD
LEE'S SUMMIT, MO 64081
PHONE (816) 347-4320

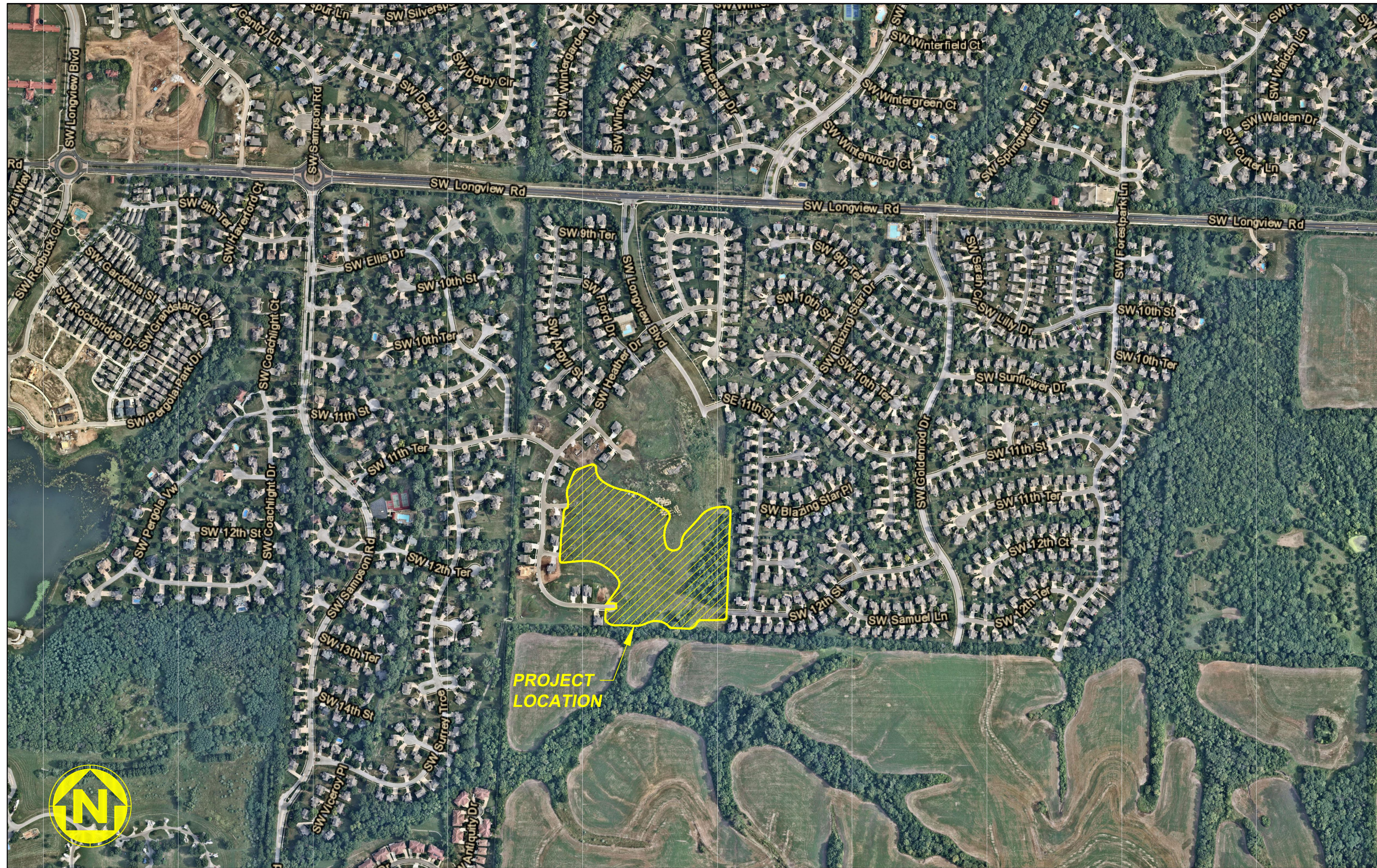
MISSOURI GAS ENERGY:
RICHARD FROCK
3025 SW CLOVER DRIVE
LEE'S SUMMIT, MO 64082
PHONE (816) 472-3489

FEMA FLOOD INFORMATION:

THE SITE IS LOCATED IN ZONE X, AREA OF MINIMAL FLOOD HAZARD, PER FEMA FIRM MAP 29095C0418G; EFFECTIVE DATE OF JANUARY 20, 2017. NO LETTERS OF MAP AMENDMENT OR REVISIONS ARE BEING PROPOSED.

BENCHMARK:

BM #1 N=999843.9665 E=2898946.9717 ELEV=935.04
DESCRIPTION = "JA-148" REFERENCE SYSTEM MONUMENT



WATERSHED: LITTLE BLUE RIVER

DISTURBED AREA: 15.3 AC

SURVEY CONTROL:

COORDINATES ARE BASED ON THE MISSOURI STATE PLANE COORDINATE SYSTEM, WEST ZONE, USING JACKSON COUNTY, MISSOURI, GEOGRAPHIC REFERENCE SYSTEM MONUMENT JA-148 (2003 ADJUSTMENT) AND ARE MODIFIED FROM GRIS COORDINATES TO GROUND COORDINATES BY UTILIZING A GRID SCALE FACTOR OF 0.9999020 AT REFERENCE MONUMENT JA-148.

PROJECT ELEVATIONS ARE BASED ON JACKSON COUNTY, MISSOURI, GEOGRAPHIC REFERENCE SYSTEM MONUMENT JA-148 (2003 ADJUSTMENT).

"JA-148" - STANDARD KC METRO ALUMINUM GRS DISK SET IN CONCRETE FLUSH WITH THE GROUND AND STAMPED "JA-148, 2002" LOCATED ON THE NORTH SIDE OF 3RD STREET, 12.5 FEET NORTH OF A SIDEWALK AND 102.5 FEET WEST OF THE PARKING LOT EXIT OF CEDAR CREEK ELEMENTARY SCHOOL.

GENERAL NOTES:

- CONTRACTOR SHALL SATISFY THEMSELVES AS TO THE EXISTING CONDITIONS OF THE SITE AND HAVE ALL UTILITIES MARKED PRIOR TO COMMENCING CONSTRUCTION.
- CONTRACTOR SHALL POTHOLE ALL CONNECTION POINTS TO EXISTING UTILITIES AND POTENTIAL UTILITY CONFLICT LOCATIONS PRIOR TO ANY CONSTRUCTION ACTIVITIES. NOTIFY ENGINEER IMMEDIATELY IF CONFLICT OR DISCREPANCY EXISTS.
- CONTRACTOR SHALL PROTECT EXISTING STRUCTURES TO REMAIN FROM DAMAGE DURING DEMOLITION AND CONSTRUCTION. ANY DAMAGE SHALL BE REPAIRED/ REPLACED TO PRE-CONSTRUCTION CONDITION AT CONTRACTOR'S EXPENSE.
- THE CONTRACTOR SHALL CONTACT THE CITY'S DEVELOPMENT SERVICES ENGINEERING INSPECTION TO SCHEDULE A PRE-CONSTRUCTION MEETING WITH A FIELD ENGINEERING INSPECTOR PRIOR TO ANY LAND DISTURBANCE WORK AT (816) 969-1200.

DEVELOPER:

BRAD KEMPF
SUMMIT HOMES KC
120 SE 30TH STREET
LEE'S SUMMIT, MO 64082
BRADLEY@SUMMITHOMESKC.COM
(816) 927-9711

CIVIL ENGINEER:

ZACH MYERS
ANDERSON ENGINEERING, INC.
941 W 141ST TERR
KANSAS CITY, MO 64145
ZMYERS@ANDERSONENGINEERINGINC.COM
(816) 380-4821

PREPARED & SUBMITTED BY:
ANDERSON ENGINEERING INC.
KANSAS CITY, MISSOURI

ZACH MYERS, P.E. _____ DATE _____
MISSOURI P.E. NO. 2012009232

SHEET INDEX:

- CVR - COVER SHEET
- C101 - GENERAL LAYOUT
- C102 - SANITARY SEWER A AND B PLAN & PROFILE
- C103 - SANITARY SEWER C AND D PLAN & PROFILE
- C401 - SANITARY SEWER DETAILS

PROJECT SPECIFICATIONS:

THE SPECIFICATIONS FOR THIS PROJECT SHALL BE THE FOLLOWING:

- MOST CURRENT VERSION OF THE DESIGN AND CONSTRUCTION MANUAL OF THE CITY OF LEE'S SUMMIT AS ADOPTED BY ORDINANCE 5813.

THE STANDARD SPECIFICATIONS THROUGH AND INCLUDING THE LATEST AMENDMENTS SHALL BE PART OF THESE PROJECT DRAWINGS AND SPECIFICATIONS AND ARE INCORPORATED HEREIN BY REFERENCE. THE MORE STRINGENT OF THESE STANDARD SPECIFICATIONS AND THOSE PREPARED BY THE ENGINEER PREPARING THESE PLANS SHALL GOVERN.

OIL AND GAS WELL NOTES:

NO ABANDONED OIL OR GAS WELLS HAVE BEEN IDENTIFIED WITHIN THE PROPERTY LIMITS OF THE PROPOSED CONSTRUCTION ACTIVITIES, PER THE MISSOURI DEPARTMENT OF NATURAL RESOURCES (MDNR) PERMITTED OIL AND GAS DATABASE, DATED JUNE 2, 2020.



DRAWING INFO.	
DRAWN BY:	GC
CHECK BY:	ZM
LICENSE NO.:	PE-012009232
DATE:	12/22/2020
ISSUED FOR:	FOR REVIEW
JOB NUMBER:	20K010057
M.O. COA NO.:	000062

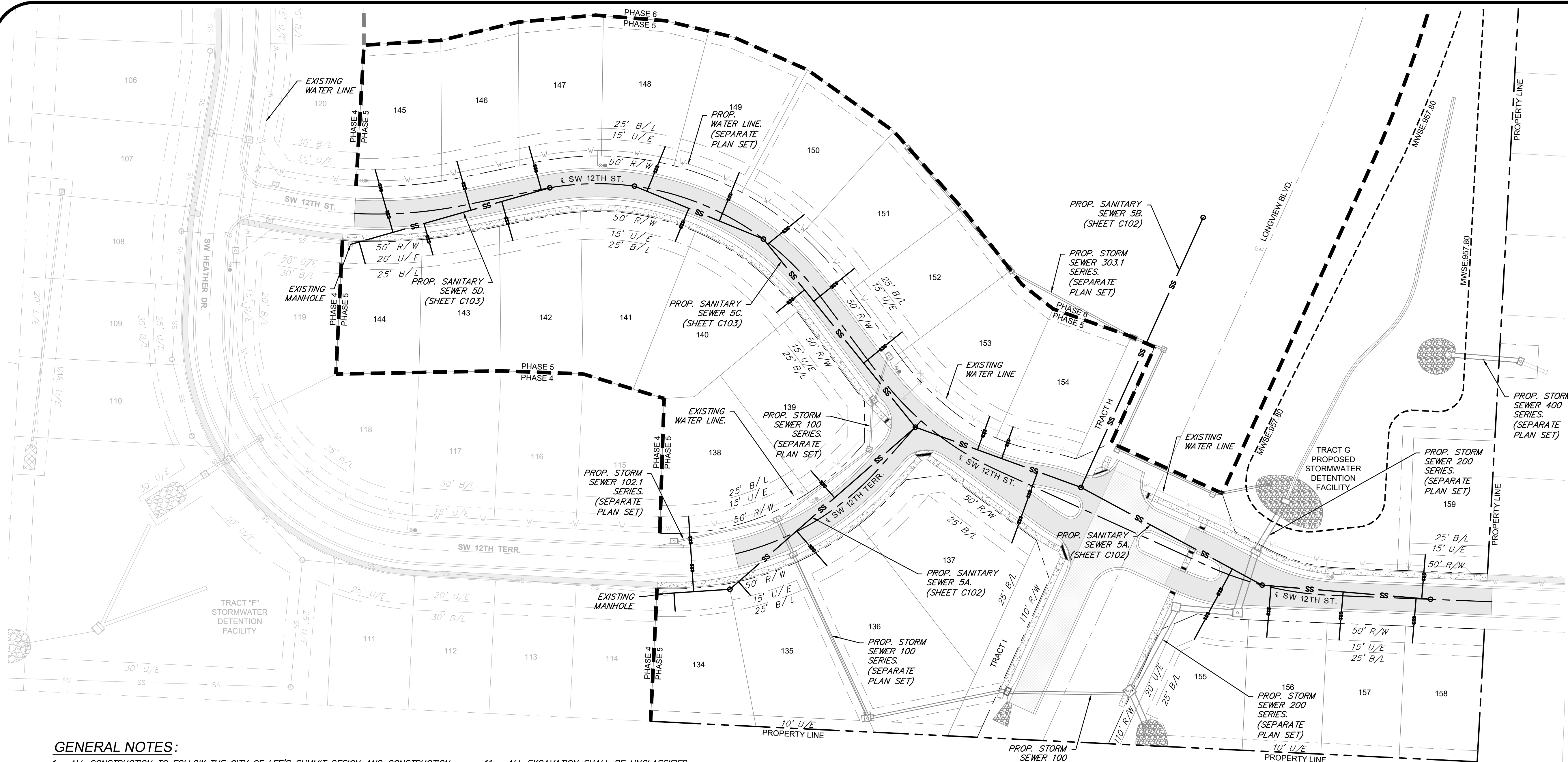
SUMMIT HOMES KC
HIGHLAND MEADOWS - 5TH PLAT
COVER SHEET
S10, T47N, R32W
LEE'S SUMMIT, JACKSON COUNTY, MISSOURI



SHEET NUMBER
CVR
1 OF 5

Feb 26, 2021 - 10:32am Plotted By: ggate G:\Shared drives\KC10 - Land Development\Projects\2020\K010057 Highland Meadows - 5th Plat\01 CIVIL\03-DWG\Sheet\SANITARY SEWER\K010057 - SH1 - COVER.dwg Layout: COVER SHEET

Feb 26, 2021 - 10:32am Plotted By: gac G:\Shared drives\KC10 - Land Development\Projects\2020\KC10\DWG\Sheet\SANITARY SEWER\KC10C101.dwg Layout: GENERAL LAYOUT

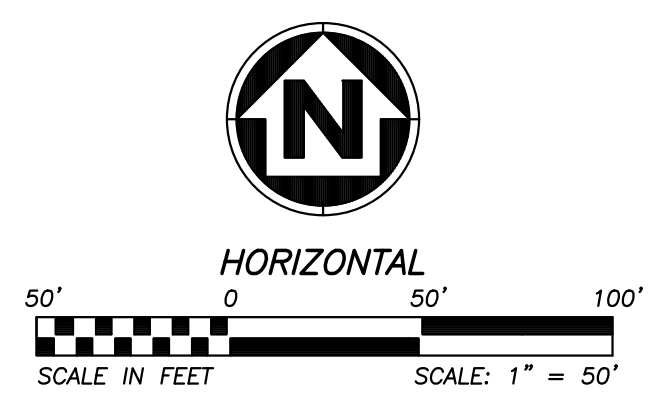


GENERAL NOTES:

- ALL CONSTRUCTION TO FOLLOW THE CITY OF LEE'S SUMMIT DESIGN AND CONSTRUCTION MANUAL AS ADOPTED BY ORDINANCE 5813.
- ALL WORKMANSHIP AND MATERIALS SHALL BE SUBJECT TO THE INSPECTION AND APPROVAL OF THE ENGINEERING DEPARTMENT OF THE CITY OF LEE'S SUMMIT, MISSOURI.
- LINEAL FOOT MEASUREMENTS SHOWN ON THE PLANS ARE HORIZONTAL MEASUREMENTS, NOT SLOPE MEASUREMENTS.
- NO GEOLOGICAL INVESTIGATION HAS BEEN PERFORMED ON THIS PROJECT.
- THE UTILITY LOCATIONS SHOWN ON THESE PLANS ARE TAKEN FROM UTILITY COMPANY RECORDS AND APPARENT FIELD LOCATIONS. THE CONTRACTOR SHALL VERIFY THE LOCATION AND DEPTH OF ALL UTILITIES PRIOR TO CONSTRUCTION.
- THE CONTRACTOR SHALL ADHERE TO THE PROVISIONS OF THE SENATE BILL 583, 78TH GENERAL ASSEMBLY OF THE STATE OF MISSOURI. THE BILL REQUIRES THAT ANY PERSON OR FIRM DOING EXCAVATION ON PUBLIC RIGHT-OF-WAY DON SO ONLY AFTER GIVING NOTICE TO, AND OBTAINING INFORMATION FROM, UTILITY COMPANIES. STATE LAW REQUIRES 72 HOURS ADVANCE NOTICE. THE CONTRACTOR MAY ALSO UTILIZE THE FOLLOWING TOLL FREE PHONE NUMBER PROVIDED BY "MISSOURI ONE CALL SYSTEM, INC.": 1-(800)-DIG RITE OR 811. THIS PHONE NUMBER IS APPLICABLE ANYWHERE WITHIN THE STATE OF MISSOURI. PRIOR TO COMMENCEMENT OF WORK, THE CONTRACTOR SHALL NOTIFY ALL THOSE COMPANIES WHICH HAVE FACILITIES IN THE NEAR VICINITY OF THE CONSTRUCTION TO BE PERFORMED.
- PRIOR TO ORDERING PRECAST STRUCTURES, SHOP DRAWINGS SHALL BE SUBMITTED TO THE DESIGN ENGINEER FOR APPROVAL.
- THE CONTRACTOR SHALL PROTECT ALL MAJOR TREES FROM DAMAGE. NO TREE SHALL BE REMOVED WITHOUT PERMISSION OF THE OWNER, UNLESS SHOWN OTHERWISE.
- CLEARING AND GRUBBING OPERATIONS AND DISPOSAL OF ALL DEBRIS THEREFROM SHALL BE PERFORMED BY THE CONTRACTOR IN STRICT ACCORDANCE WITH ALL LOCAL CODES AND ORDINANCES.
- ALL WASTE MATERIAL RESULTING FROM THE PROJECT SHALL BE DISPOSED OF OFF-SITE BY THE CONTRACTOR, OR AS DIRECTED BY THE OWNER.
- ALL EXCAVATION SHALL BE UNCLASSIFIED.
- THE CONTRACTOR SHALL CONTROL THE EROSION AND SILTATION DURING ALL PHASES OF CONSTRUCTION, AND SHALL KEEP THE STREETS CLEAN OF MUD AND DEBRIS.
- ALL MANHOLES, CATCH BASINS, UTILITY VALVES, AND METER PITS TO BE ADJUSTED OR REBUILT TO GRADE AS REQUIRED. ALL EXISTING UTILITIES SHALL BE ADJUSTED AS REQUIRED.
- SUBGRADE SOIL FOR ALL CONCRETE STRUCTURES, REGARDLESS OF THE TYPE OR LOCATION, SHALL BE FIRM, DENSE AND THOROUGHLY COMPACTED AND CONSOLIDATED; SHALL BE FREE FROM MUCK AND MUD; AND SHALL BE SUFFICIENTLY STABLE TO REMAIN FIRM AND INTACT UNDER THE FEET OF THE WORKMEN OR MACHINERY ENGAGED IN SUBGRADE SURFACING, LAYING REINFORCING STEEL, AND DEPOSITING CONCRETE THEREON. IN ALL CASES WHERE SUBSOIL IS MUCKY OR WORKS INTO MUD OR MUD DURING SUCH OPERATION, A SEAL COURSE OF EITHER CONCRETE OR ROCK SHALL BE PLACED BELOW SUBGRADE TO PROVIDE A FIRM BASE FOR WORKING AND FOR PLACING HE FLOOR SLAB.
- THE CONTRACTOR SHALL CONTACT THE CITY'S DEVELOPMENT SERVICES ENGINEERING INSPECTION 48 HOURS PRIOR TO ANY LAND DISTURBANCE WORK AT (816) 969-1200.
- THE CONTRACTOR SHALL CONTACT THE RIGHT-OF-WAY INSPECTOR AT 816-969-1800 PRIOR TO ANY LAND DISTURBANCE ACTIVITIES WITHIN THE RIGHT-OF-WAY. THESE ACTIVITIES MAY REQUIRE A PERMIT.
- THE CONTRACTOR SHALL PROVIDE AND MAINTAIN ALL TRAFFIC HANDLING MEASURES NECESSARY TO ENSURE THAT THE GENERAL PUBLIC IS PROTECTED AT ALL TIMES. TRAFFIC CONTROL SHALL CONFORM TO THE MANUAL ON UNIFORM TRAFFIC CONTROL DEVICES (MUTCD - LATEST EDITION).
- ALL SANITARY SEWER LATERALS SHALL HAVE A TRENCH CHECK, CONSISTING OF A FLOWABLE BACKFILL, INSTALLED DURING CONSTRUCTION. TRENCH CHECK SHALL EXTEND TO BOTTOM OF TRENCH, TO WIDTH OF TRENCH TO 12 INCHES ABOVE PIPE, FOR A MINIMUM LENGTH OF 12 INCHES. TRENCH CHECK SHALL BE LOCATED AT LEAST 5 FEET FROM SANITARY MAIN.

LEGEND

- PROP. STREET C
- PROP. RIGHT-OF-WAY
- PROP. UTILITY EASEMENT
- PROP. BUILDING SETBACK
- PROP. LOT LINE
- PROP. WATER LINE
- PROP. SSWR
- PROP. SSWR SERVICE
- PROP. STREET PAVEMENT
- PROP. LONGVIEW BLVD.
- PROP. SIDEWALK
- PROP. RIPRAP
- EXISTING SIDEWALK



SURVEY CONTROL:

COORDINATES ARE BASED ON THE MISSOURI STATE PLANE COORDINATE SYSTEM, WEST ZONE, USING JACKSON COUNTY, MISSOURI, GEOGRAPHIC REFERENCE SYSTEM MONUMENT JA-148 (2003 ADJUSTMENT) AND ARE MODIFIED FROM GRID COORDINATES TO GROUND COORDINATES BY UTILIZING A GRID SCALE FACTOR OF 0.9999020 AT REFERENCE MONUMENT JA-148.

PROJECT ELEVATIONS ARE BASED ON JACKSON COUNTY, MISSOURI, GEOGRAPHIC REFERENCE SYSTEM MONUMENT JA-148 (2003 ADJUSTMENT).

"JA-148"-STANDARD KC METRO ALUMINUM GRS DISK SET IN CONCRETE FLUSH WITH THE GROUND AND STAMPED "JA-148, 2002" LOCATED ON THE NORTH SIDE OF 3RD STREET, 12.5 FEET NORTH OF A SIDEWALK AND 102.5 FEET WEST OF THE PARKING LOT EXIT OF CEDAR CREEK ELEMENTARY SCHOOL.

PROJECT BENCHMARK(S) AND/OR CONTROL POINT(S)
 BM #1 N=999843.9665 E=2898946.9717 ELEV=935.04
 DESC="JA-148" REFERENCE SYSTEM MONUMENT

ANDERSON ENGINEERING
 EMPLOYEE OWNED

ENGINEERS • SURVEYORS • LABORATORIES • DRILLING
 941 W. 141ST TER. • KANSAS CITY, MISSOURI 64145 • PHONE (816) 777-9400
 A LICENSED MISSOURI ENGINEERING & SURVEYING CORPORATION - LC 02

DRAWING INFO.	
NO.	DESCRIPTION
1.	REVISED PER CITY COMMENTS
2.	REVISED PER CITY COMMENTS

NO.	BY	DATE	DRAWN BY:	CHECK BY:
	GC	1/15/21	GC	ZM

LICENSE NO.	DATE:	ISSUED FOR:	JOB NUMBER:	M/D COA NO.
PE-017000232	12/2/2020	FOR REVIEW	20KC10057	000062

© COPYRIGHT ANDERSON ENGINEERING, INC. 2020

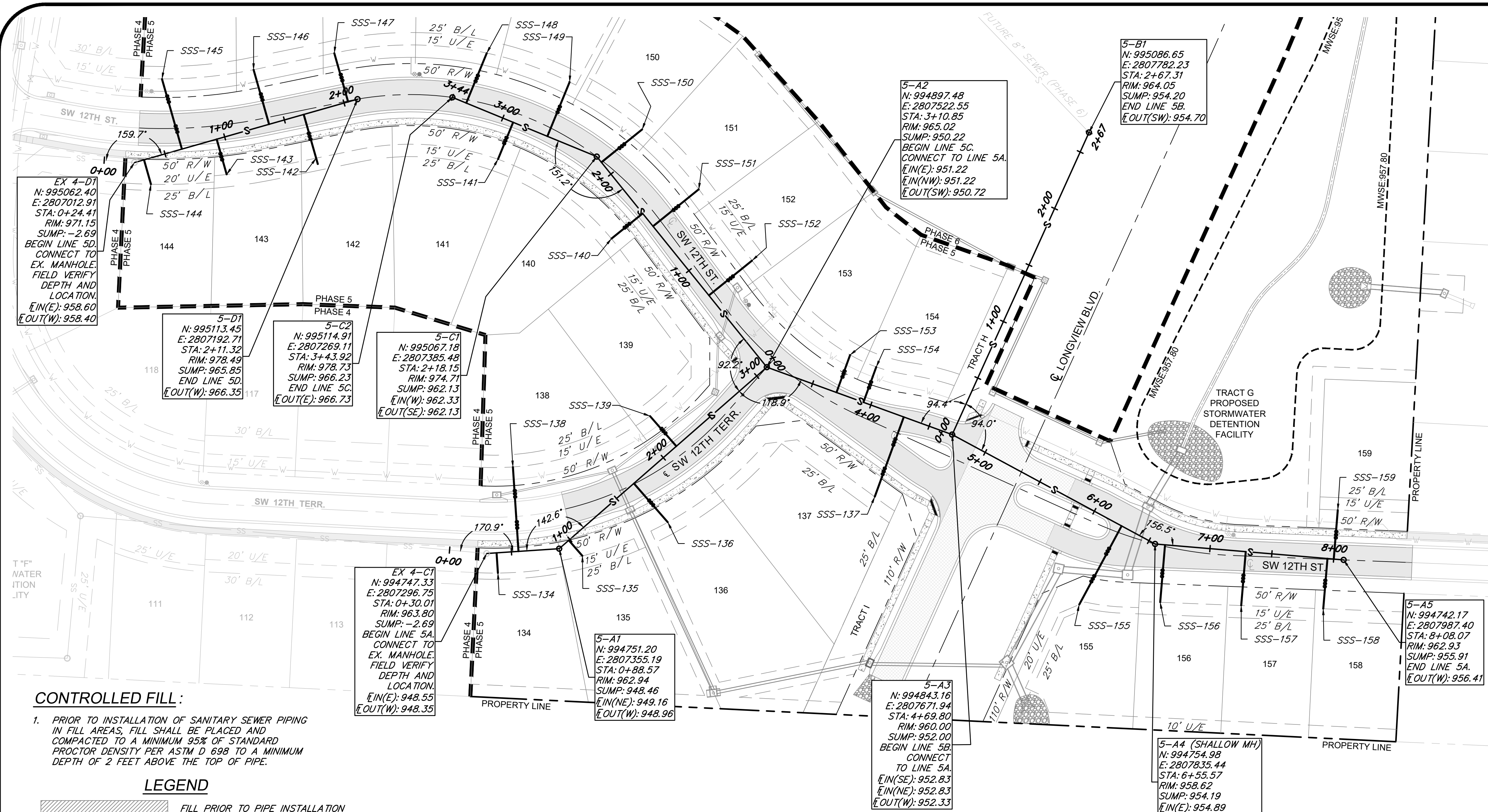
SUMMIT HOMES KC
 HIGHLAND MEADOWS - 5TH PLAT

GENERAL LAYOUT

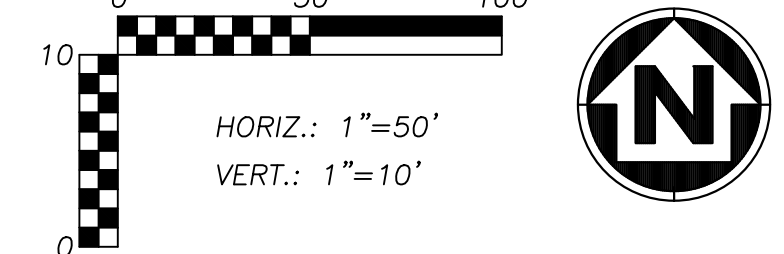
S10, T47N, R22W
 LEE'S SUMMIT, JACKSON COUNTY, MISSOURI

SHEET NUMBER
C101
 2 OF 5

Feb 26, 2021 - 10:33am Plotted By: gac
 C:\Shared drives\KC10 - Land Development\Projects\2020\KORC10057 Highland Meadows - 5th Plat\01 CIVIL\03-DWG\Bases\20KORC10057 - BASE - PROP - SANITARY.dwg Layout: SANITARY SEWER A AND B PLAN & PROFILE



- MANHOLE STRUCTURE NOTE:**
- PROPOSED MANHOLES SHALL CONFORM TO THE CITY OF LEE'S SUMMIT STANDARD DETAIL.
- GENERAL NOTES:**
- ALL WORK IN PUBLIC EASEMENTS AND RIGHT-OF-WAY AND ALL EROSION CONTROL WORK MUST COMPLY WITH THE LATEST EDITION OF THE TECHNICAL PROVISIONS & STANDARD DRAWINGS FOR ROADS AND SEWERS, OF LEE'S SUMMIT, MISSOURI.
 - WATER MAINS AND SANITARY SEWER MAINS/STRUCTURES SHALL HAVE AT LEAST 10' OF HORIZONTAL SEPARATION FROM EDGE OF WATER PIPE TO EDGE OF SEWER PIPE OR SEWER STRUCTURE.
 - WATER MAINS AND SANITARY SEWERS SHALL HAVE AT LEAST 18" OF VERTICAL SEPARATION FROM EDGE OF PIPE TO EDGE OF PIPE. THE CROSSING SHALL BE ARRANGED SO THAT THE SEWER JOINTS WILL BE EQUIDISTANT AND AS FAR AS POSSIBLE FORM THE WATER MAIN JOINTS.
 - ALL SANITARY SEWER LATERALS SHALL HAVE A TRENCH CHECK, CONSISTING OF FLOWABLE BACKFILL INSTALLED DURING CONSTRUCTION. TRENCH CHECK SHALL EXTEND TO BOTTOM OF TRENCH, TO WIDTH OF TRENCH TO 12 INCHES ABOVE PIPE, FOR A MINIMUM LENGTH OF 12 INCHES. TRENCH CHECK SHALL BE LOCATED AT LEAST 5 FEET FROM SANITARY SEWER MAIN.
 - ALL SANITARY SEWER LATERALS SHALL BE 4" PVC AND MAINTAIN A MINIMUM 2.0% SLOPE. REFER TO SANITARY SEWER DETAILS SHEET FOR BUILDING CONNECTION AND RISER DETAILS.



SANITARY SEWER SERVICE				
PIPE NAME	STATION	LENGTH	SLOPE	MSFE
SSS-157	7+28.92	44'	2.00%	957.55+(3.5')
SSS-158	7+95.00	41'	2.00%	958.22+(3.5')
SSS-159	8+00.07	40'	2.00%	958.22+(3.5')
SSS-154	3+93.65	30'	2.00%	953.54+(3.5')
SSS-153	3+70.55	32'	2.00%	953.31+(3.5')
SSS-134	0+38.01	16'	2.00%	950.06+(3.5')
SSS-135	0+98.85	17'	2.00%	950.69+(3.5')
SSS-138	0+55.72	68'	2.00%	951.22+(3.5')
SSS-139	2+14.01	32'	2.00%	951.81+(3.5')
SSS-136	1+68.52	42'	2.00%	951.68+(3.5')
SSS-137	4+28.28	68'	2.00%	954.44+(3.5')
SSS-155	6+24.94	72'	2.00%	956.75+(3.5')
SSS-156	6+63.61	46'	2.00%	957.00+(3.5')

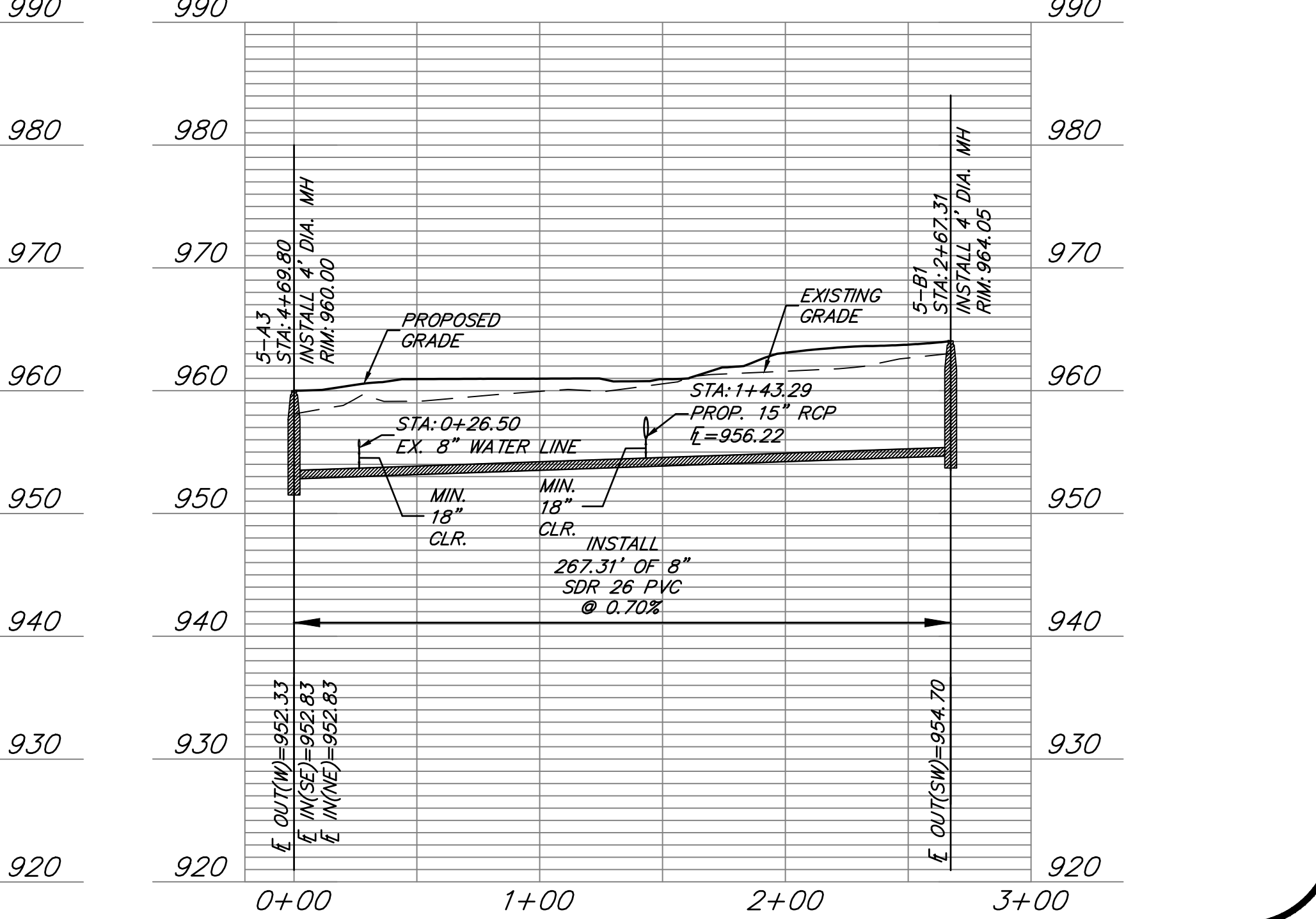
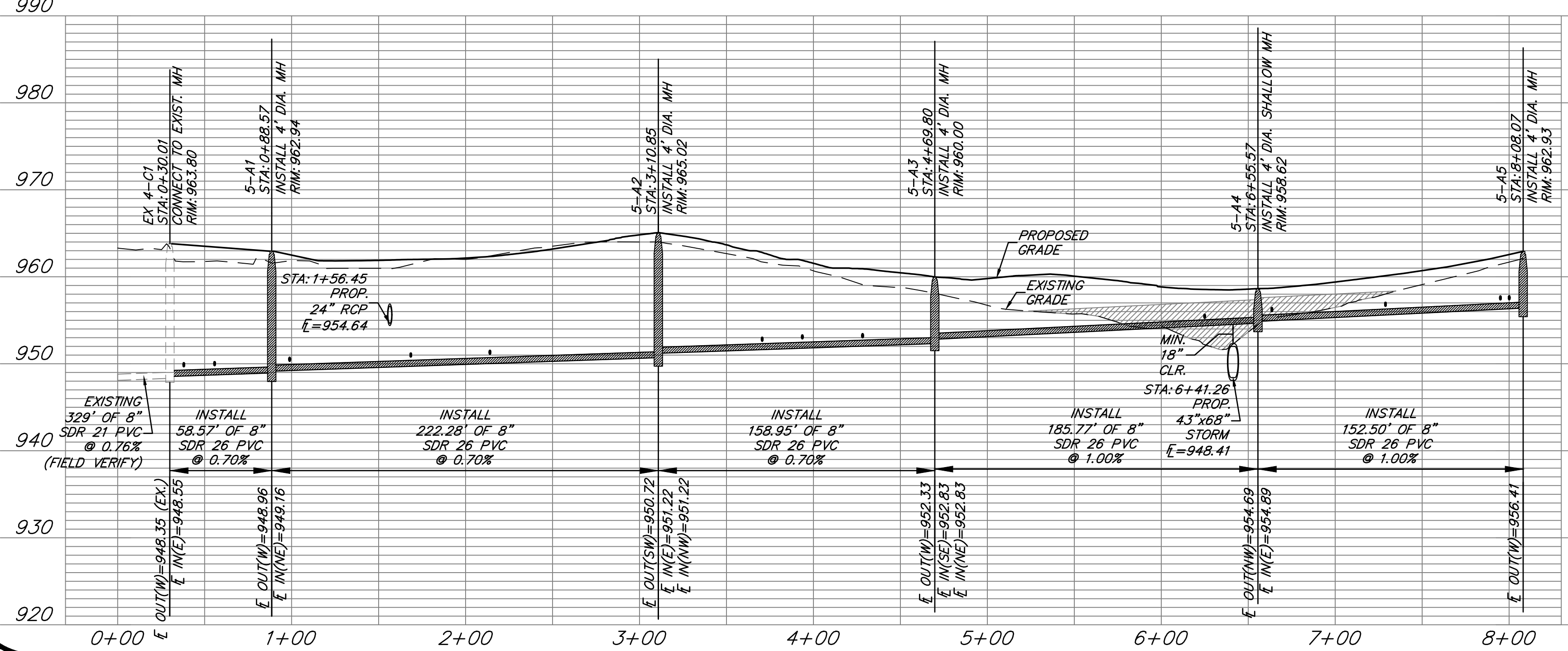
- CONTROLLED FILL:**
- PRIOR TO INSTALLATION OF SANITARY SEWER PIPING IN FILL AREAS, FILL SHALL BE PLACED AND COMPACTED TO A MINIMUM 95% OF STANDARD PROCTOR DENSITY PER ASTM D 698 TO A MINIMUM DEPTH OF 2 FEET ABOVE THE TOP OF PIPE.

LEGEND

FILL PRIOR TO PIPE INSTALLATION

SANITARY SEWER 5A

SANITARY SEWER 5B



ANDERSON ENGINEERING
 EMPLOYEE OWNED

ENGINEERS • SURVEYORS • LABORATORIES • DRILLING
 941 W. 141ST TER • KANSAS CITY, MISSOURI 64145 • PHONE (816) 777-9400
 A LICENSED MISSOURI ENGINEERING & SURVEYING CORPORATION - LC 02

DRAWING INFO.	
NO.	DESCRIPTION
1.	REVISOR PER CITY COMMENTS
2.	REVISOR PER CITY COMMENTS

DATE	BY	CHECK BY	ISSUED FOR:	JOB NUMBER:	M/D COA NO.
1/15/21	GC	ZM	FOR REVIEW	20KORC10057	000062
2/22/2020	GC		FOR REVIEW		

© COPYRIGHT ANDERSON ENGINEERING, INC. 2020

SUMMIT HOMES KC
 HIGHLAND MEADOWS - 5TH PLAT

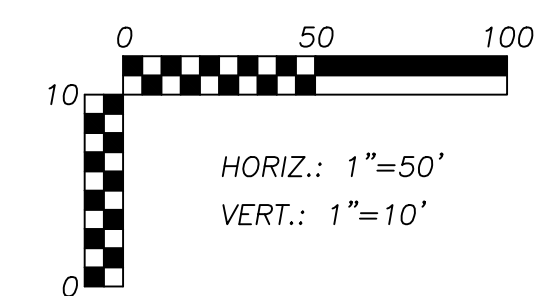
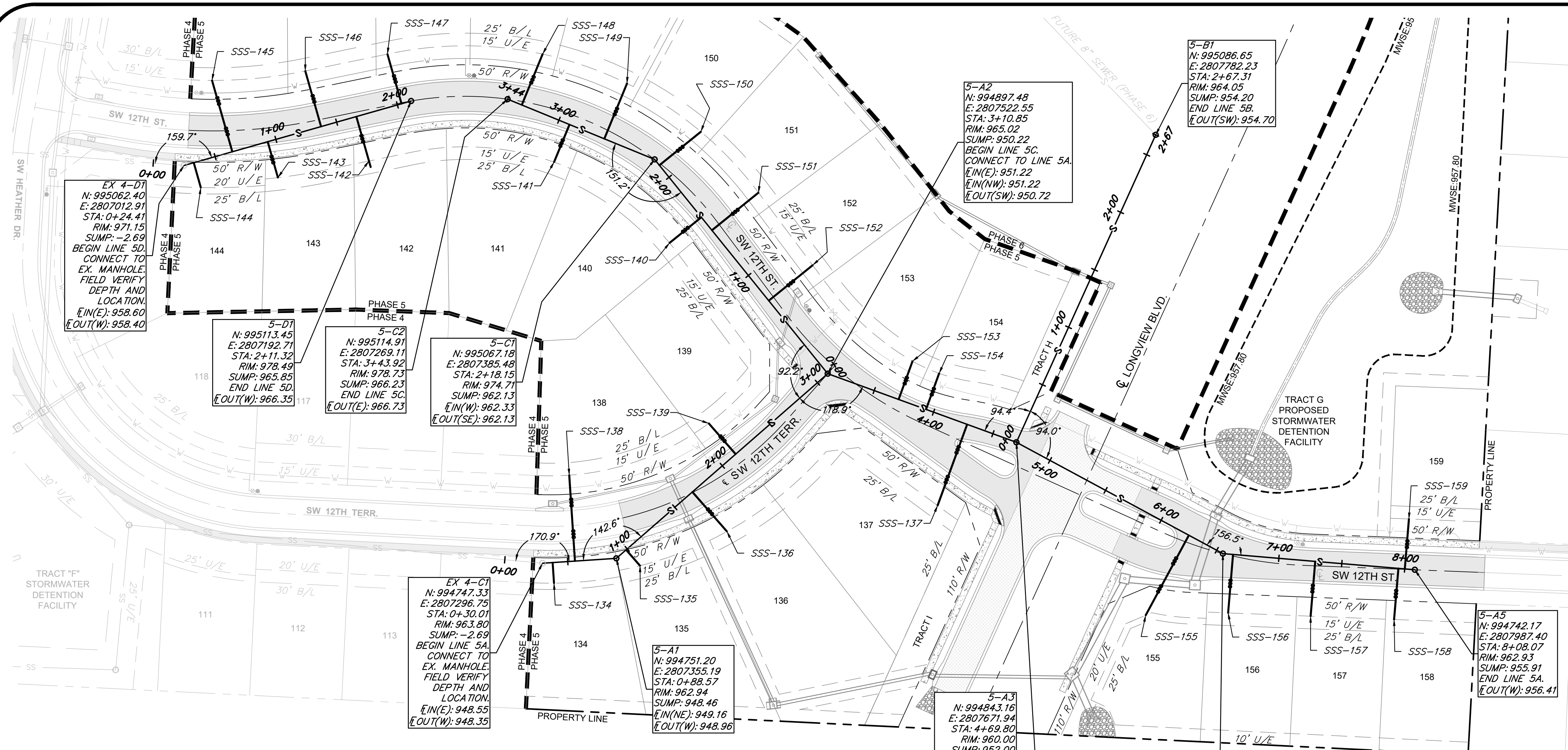
SANITARY SEWER A AND B
 PLAN & PROFILE

S10, T47N, R22W
 LEE'S SUMMIT, JACKSON COUNTY, MISSOURI

STATE OF MISSOURI
 ZACH A. MYERS
 PROFESSIONAL ENGINEER
 NUMBER: PE-2012009232

SHEET NUMBER
C102
 3 OF 5

Feb 26, 2021 - 10:33am Plotted By: gca G:\Shared drives\KC10 - Land Development\Projects\2020\K010057 Highland Meadows - 5th Plat\01 CIVIL\03-DWG\Bases\K010057 - BASE - PROP - SANITARY C AND D PLAN & PROFILE.dwg Layout: SANITARY SEWER C AND D PLAN & PROFILE



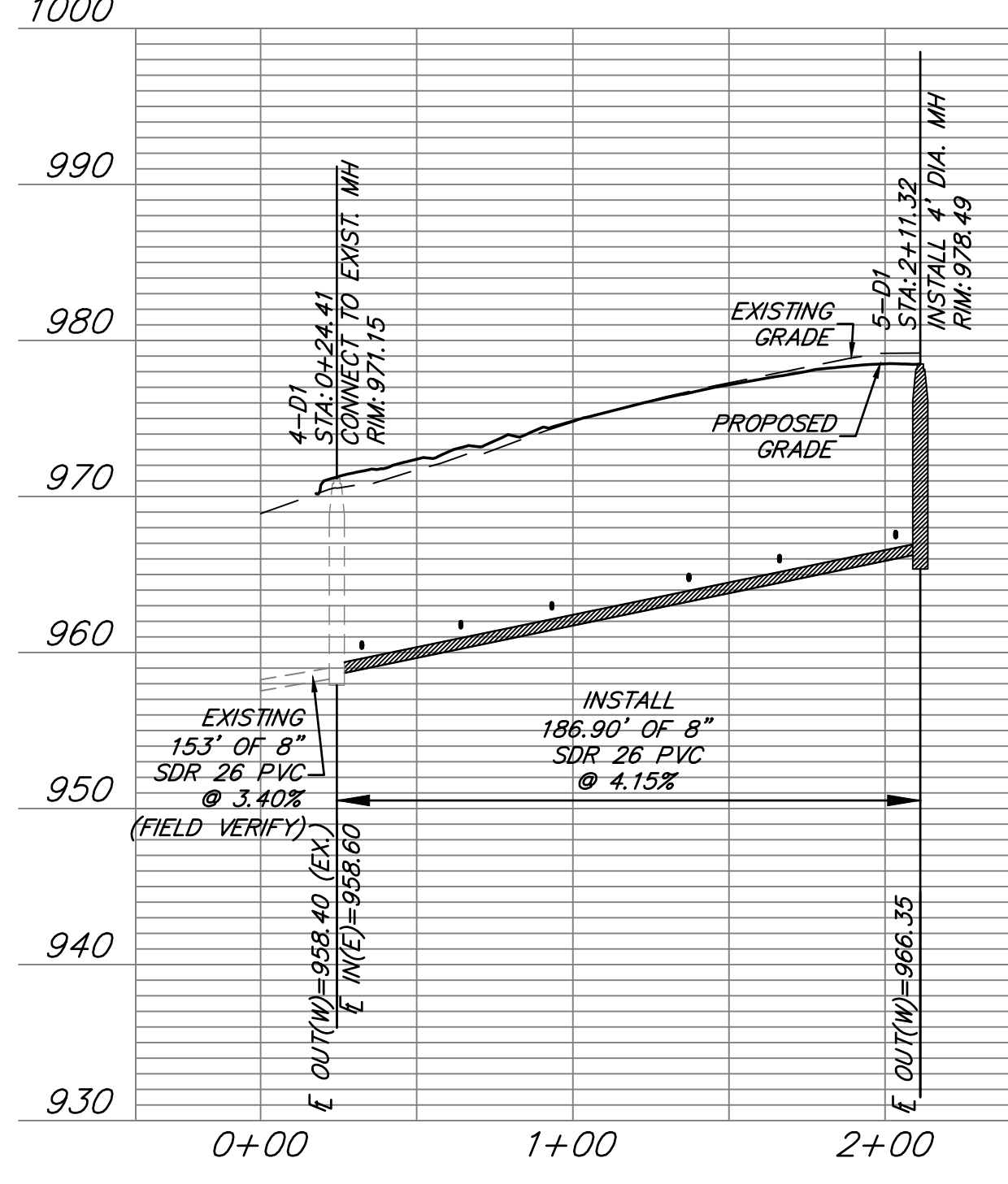
MANHOLE STRUCTURE NOTE:

1. PROPOSED MANHOLES SHALL CONFORM TO THE CITY OF LEE'S SUMMIT STANDARD DETAIL.

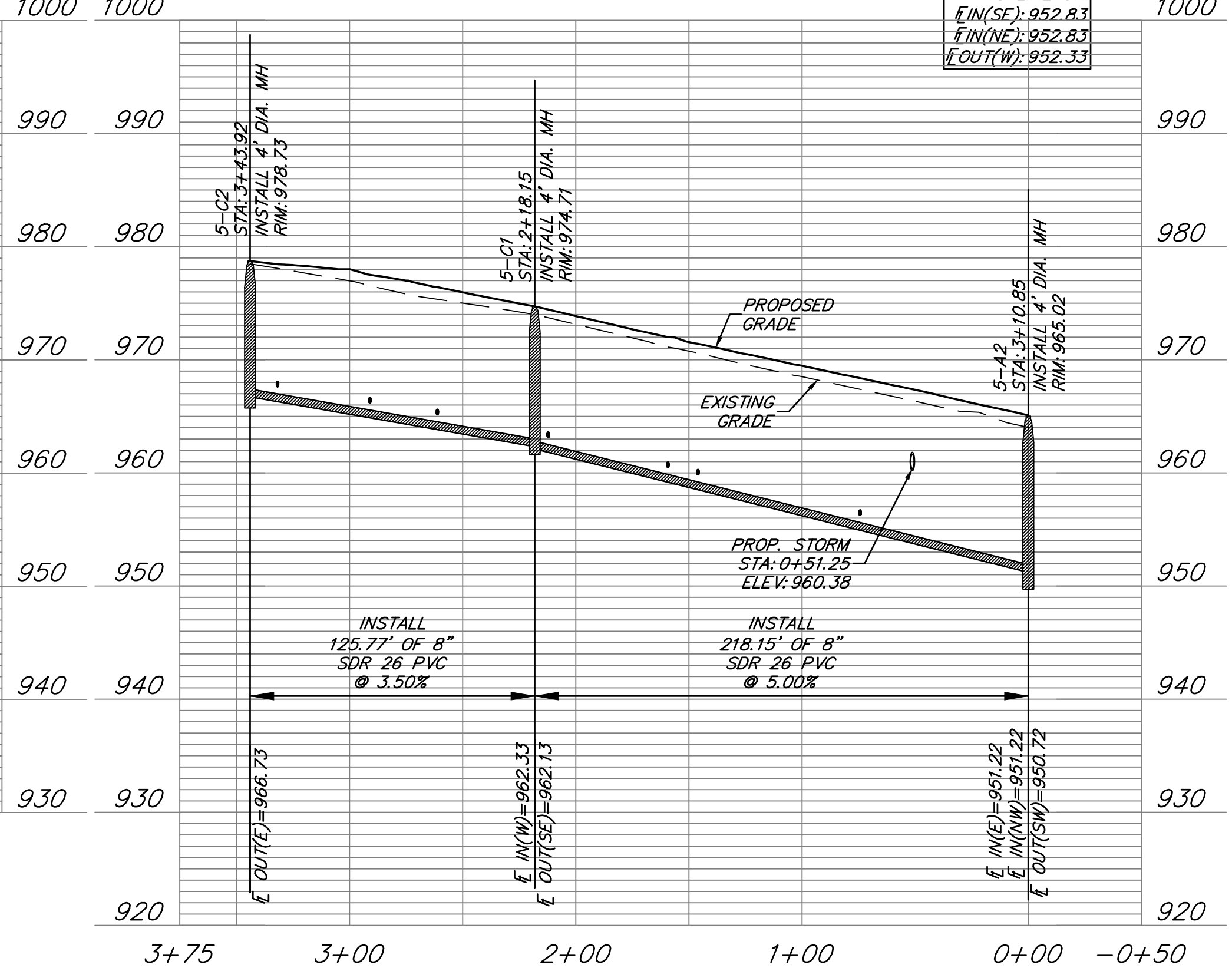
GENERAL NOTES:

- ALL WORK IN PUBLIC EASEMENTS AND RIGHT-OF-WAY AND ALL EROSION CONTROL WORK MUST COMPLY WITH THE LATEST EDITION OF THE TECHNICAL PROVISIONS & STANDARD DRAWINGS FOR ROADS AND SEWERS, OF LEE'S SUMMIT, MISSOURI.
- WATER MAINS AND SANITARY SEWER MAINS/STRUCTURES SHALL HAVE AT LEAST 10' OF HORIZONTAL SEPARATION FROM EDGE OF WATER PIPE TO EDGE OF SEWER PIPE OR SEWER STRUCTURE.
- WATER MAINS AND SANITARY SEWERS SHALL HAVE AT LEAST 18" OF VERTICAL SEPARATION FROM EDGE OF PIPE TO EDGE OF PIPE. THE CROSSING SHALL BE ARRANGED SO THAT THE SEWER JOINTS WILL BE EQUIDISTANT AND AS FAR AS POSSIBLE FORM THE WATER MAIN JOINTS.
- ALL SANITARY SEWER LATERALS SHALL HAVE A TRENCH CHECK, CONSISTING OF FLOWABLE BACKFILL INSTALLED DURING CONSTRUCTION. TRENCH CHECK SHALL EXTEND TO BOTTOM OF TRENCH, TO WIDTH OF TRENCH TO 12 INCHES ABOVE PIPE. FOR A MINIMUM LENGTH OF 12 INCHES, TRENCH CHECK SHALL BE LOCATED AT LEAST 5 FEET FROM SANITARY SEWER MAIN.
- ALL SANITARY SEWER LATERALS SHALL BE 4" PVC AND MAINTAIN A MINIMUM 2.0% SLOPE. REFER TO SANITARY SEWER DETAILS SHEET FOR BUILDING CONNECTION AND RISER DETAILS.

SANITARY SEWER 5D



SANITARY SEWER 5C



SANITARY SEWER SERVICE					
PIPE NAME	STATION	LENGTH	SLOPE	MSFE	
SSS-152	0+74.34	45'	2.00%	957.21+(3.5')	
SSS-151	1+45.99	47'	2.00%	960.84+(3.5')	
SSS-140	1+59.27	32'	2.00%	961.21+(3.5')	
SSS-150	2+12.20	42'	2.00%	964.05+(3.5')	
SSS-149	2+61.19	47'	2.00%	966.16+(3.5')	
SSS-141	2+90.98	32'	2.00%	966.90+(3.5')	
SSS-148	3+31.82	44'	2.00%	968.55+(3.5')	
SSS-147	2+03.42	41'	2.00%	968.21+(3.5')	
SSS-146	1+37.18	46'	2.00%	965.57+(3.5')	
SSS-142	1+66.21	42'	2.00%	966.69+(3.5')	
SSS-144	0+32.41	20'	2.00%	960.72+(3.5')	
SSS-145	0+64.13	59'	2.00%	962.80+(3.5')	
SSS-143	0+93.28	30'	2.00%	963.42+(3.5')	

LEGEND

- PROP. STREET &
- PROP. RIGHT-OF-WAY
- PROP. UTILITY EASEMENT
- PROP. BUILDING SETBACK
- PROP. LOT LINE
- PROP. WATER LINE
- PROP. SSWR
- PROP. SSWR SERVICE
- PROP. STREET PAVEMENT
- PROP. LONGVIEW BLVD.
- PROP. SIDEWALK
- PROP. RIPRAP
- EXISTING SIDEWALK

ANDERSON ENGINEERING
EMPLOYEE OWNED

ENGINEERS • SURVEYORS • LABORATORIES • DRILLING
941 W. 141ST TER • KANSAS CITY, MISSOURI 64145 • PHONE (816) 777-9400
A LICENSED MISSOURI ENGINEERING & SURVEYING CORPORATION - LC 02

DRAWING INFO.	
NO.	DESCRIPTION
1.	REVISED PER CITY COMMENTS
2.	REVISED PER CITY COMMENTS

NO.	BY	DATE	REVISIONS
	GC	1/15/21	
	ZM	2/26/21	

NO.	DATE	FOR REVIEW	ISSUED FOR:	JOB NUMBER:	M/D COA NO.
	12/20/20			20K010057	00062

© COPYRIGHT ANDERSON ENGINEERING, INC. 2020

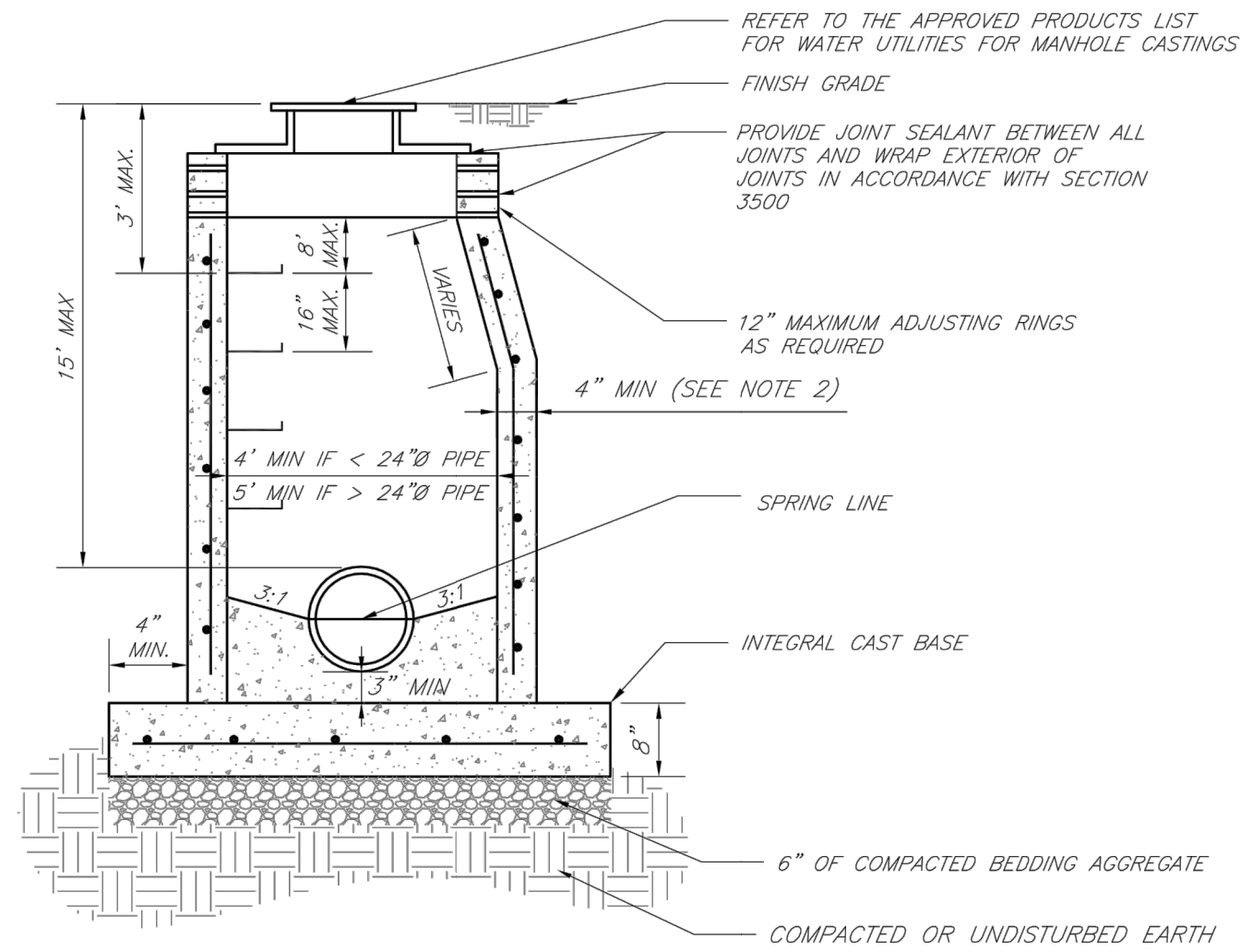
SUMMIT HOMES KC
HIGHLAND MEADOWS - 5TH PLAT

**SANITARY SEWER C AND D
PLAN & PROFILE**

S10, T47N, R23W
LEE'S SUMMIT, JACKSON COUNTY, MISSOURI

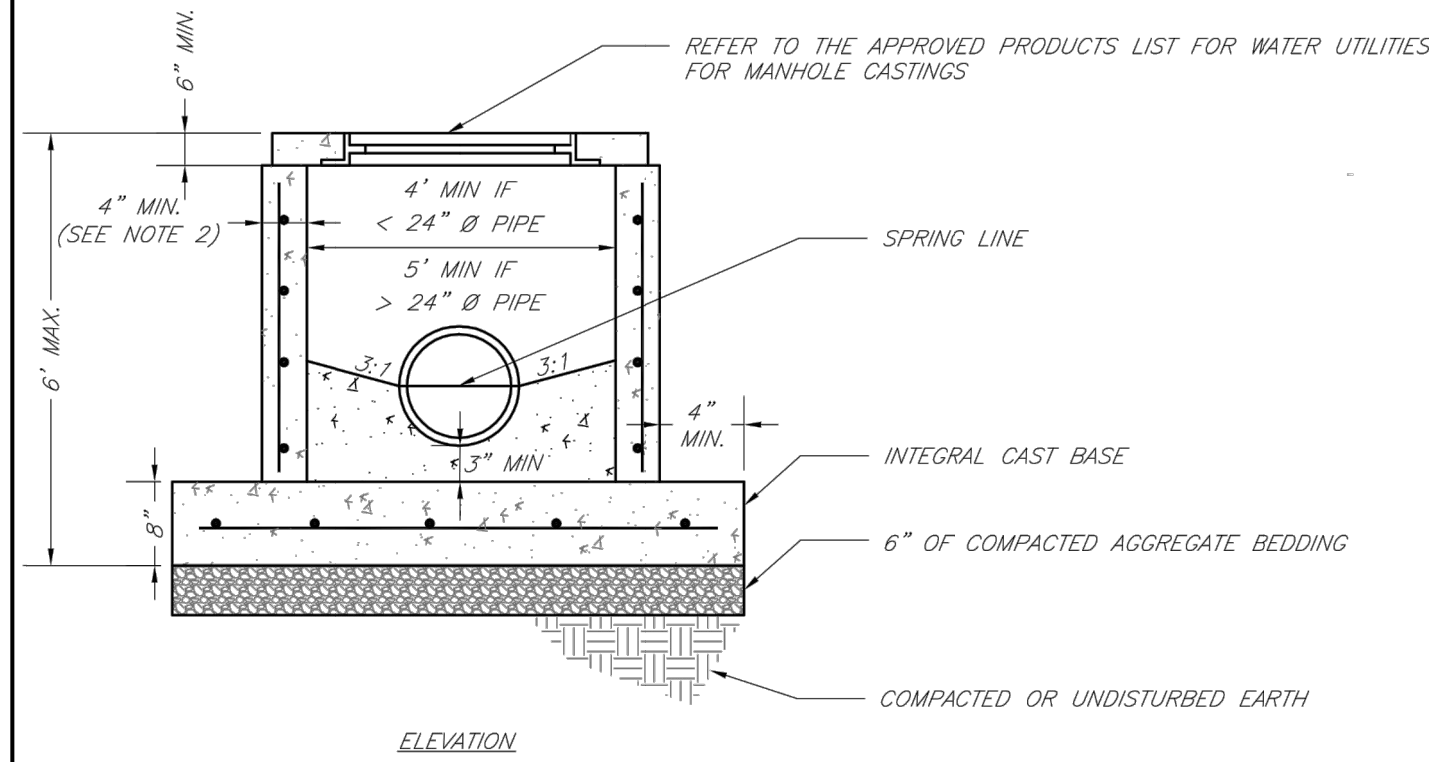
SHEET NUMBER
C103
4 OF 5

Feb 26, 2021 - 10:34am Plotted By: gale G:\Shared drives\KC10 - Land Development\Projects\2020\KOKCT0057 Highland Meadows - 5th Plat 01 CIVL 03-DWG\Sheet\SANITARY SEWER SANITARY SEWER DETAILS - SH1 - DETAILS.dwg Layout: SANITARY SEWER DETAILS



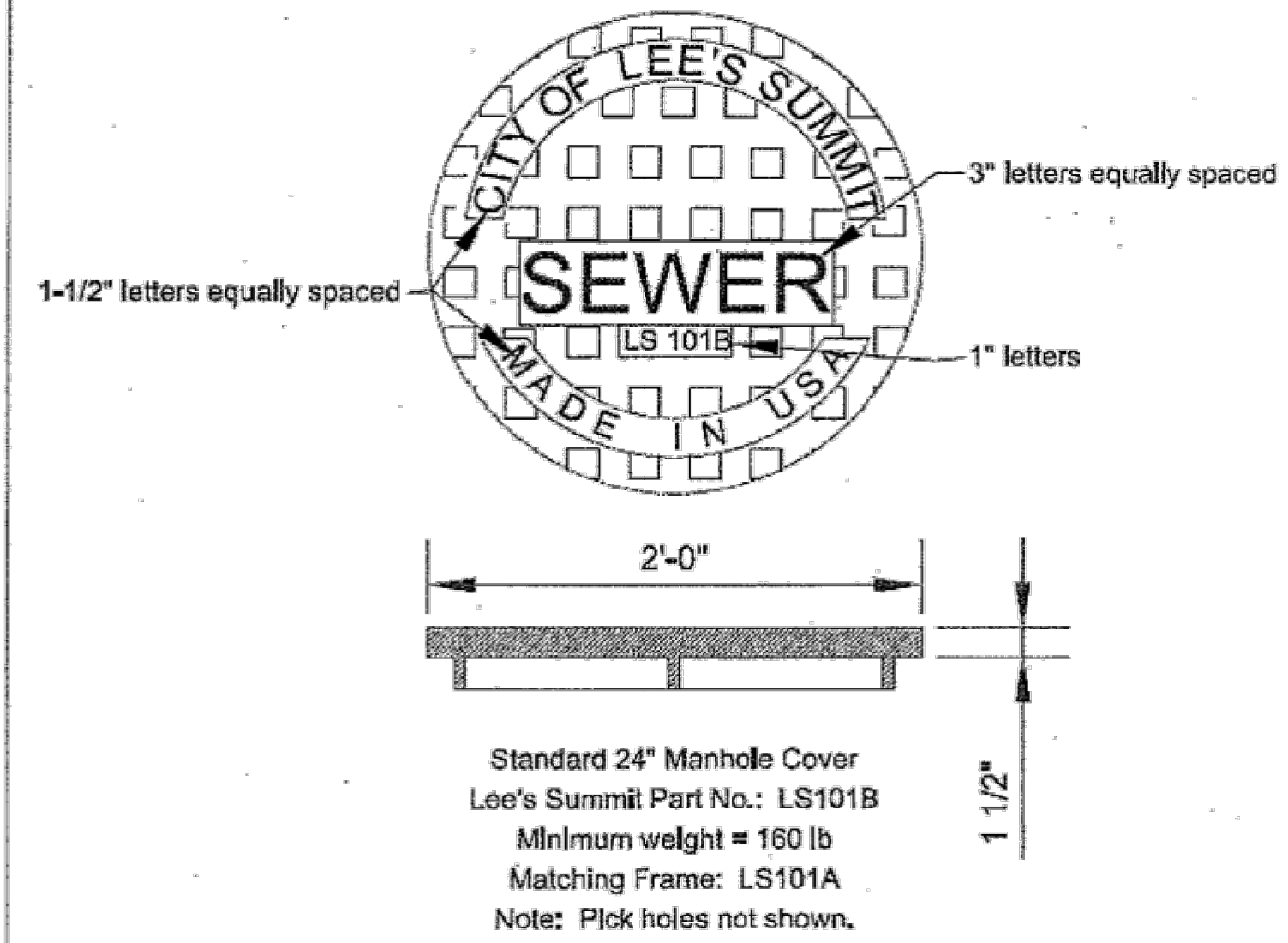
- NOTES:
1. PRECAST CONCRETE MANHOLES SHALL CONFORM TO ASTM C478 EXCEPT AS MODIFIED BY THE SPECIFICATIONS.
 2. A WALL THICKNESS NOT LESS THAN ONE-TWELFTH (1/12) OF THE INSIDE DIAMETER OR 4", WHICHEVER IS GREATER, SHALL BE USED WHEN THE MANHOLE DEPTH IS LESS THAN 15'.
 3. WATERPROOFING SHALL BE REQUIRED ON THE OUTSIDE OF MANHOLES. THE WATERPROOFING SHALL CONSIST OF A TOTAL DRY FILM THICKNESS OF NOT LESS THAN 14 MILS OF BITUMINOUS COATING.
 4. ONLY ECCENTRIC MANHOLE CONES WILL BE ALLOWED UNLESS OTHERWISE APPROVED BY THE CITY ENGINEER.
 5. THE FILL CONCRETE FLOW CHANNEL FOR SIDE BRANCHES SHALL BE PLACED TO PROVIDE A SMOOTH TRANSITION INTO THE FLOW LINE.
 6. REFER TO THE APPROVED PRODUCTS LIST FOR WATER UTILITIES FOR APPROVED MANHOLE GASKET MODELS.
 7. REFER TO THE APPROVED PRODUCTS LIST FOR APPROVED STEPS.

LS	LEE'S SUMMIT MISSOURI	Date: 02/13
	PUBLIC WORKS ENGINEERING DIVISION 220 SE GREEN STREET LEE'S SUMMIT, MO 64063	Drawn By: JN Checked By: DL File: SAN-2 Rev: 1/14
STANDARD PRECAST MANHOLE - SANITARY SEWER		

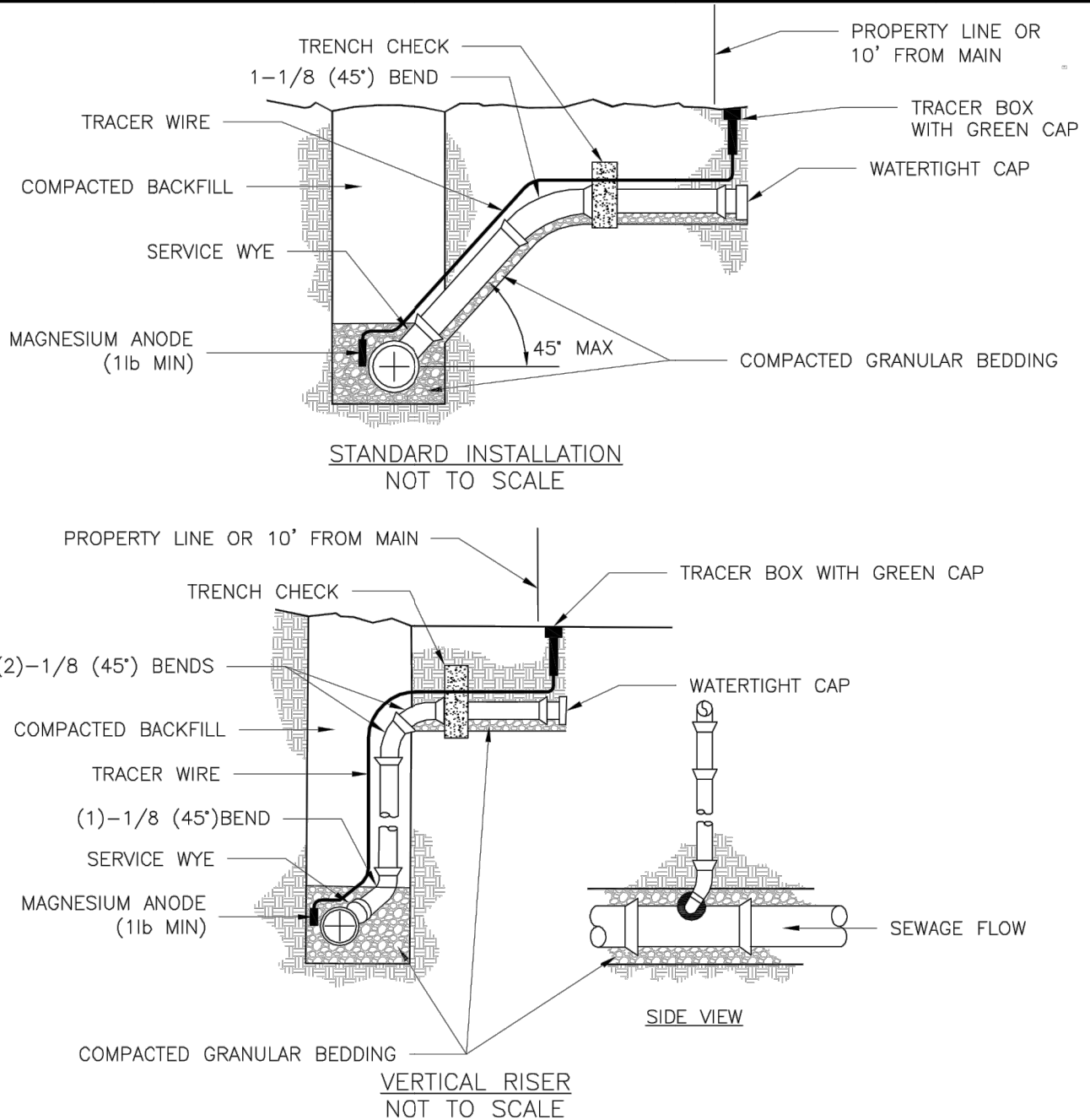


- NOTES:
1. PRECAST CONCRETE MANHOLES SHALL CONFORM TO ASTM C478 EXCEPT AS MODIFIED BY THE SPECIFICATIONS.
 2. A WALL THICKNESS NOT LESS THAN ONE-TWELFTH (1/12) OF THE INSIDE DIAMETER OR 4", WHICHEVER IS GREATER SHALL BE USED.
 3. WATERPROOFING SHALL BE REQUIRED ON THE OUTSIDE OF MANHOLES. THE WATERPROOFING SHALL CONSIST OF A TOTAL DRY FILM THICKNESS OF NOT LESS THAN 14 MILS OF BITUMINOUS COATING.
 4. THE FILL CONCRETE FLOW CHANNEL FOR SIDE BRANCHES SHALL BE PLACED TO PROVIDE A SMOOTH TRANSITION INTO THE FLOW LINE.
 5. REFER TO THE APPROVED PRODUCTS LIST FOR WATER UTILITIES FOR MANHOLE GASKET MODELS.
 6. PROVIDE STEPS AS SHOWN ON THE APPROVED PRODUCTS LIST FOR MANHOLE DEPTHS GREATER THAN 4'.

LS	LEE'S SUMMIT MISSOURI	Date: 02/13
	PUBLIC WORKS ENGINEERING DIVISION 220 SE GREEN STREET LEE'S SUMMIT, MO 64063	Drawn By: JN Checked By: DL File: SAN-3 Rev: 1/14
SHALLOW PRECAST MANHOLE - SANITARY SEWER		

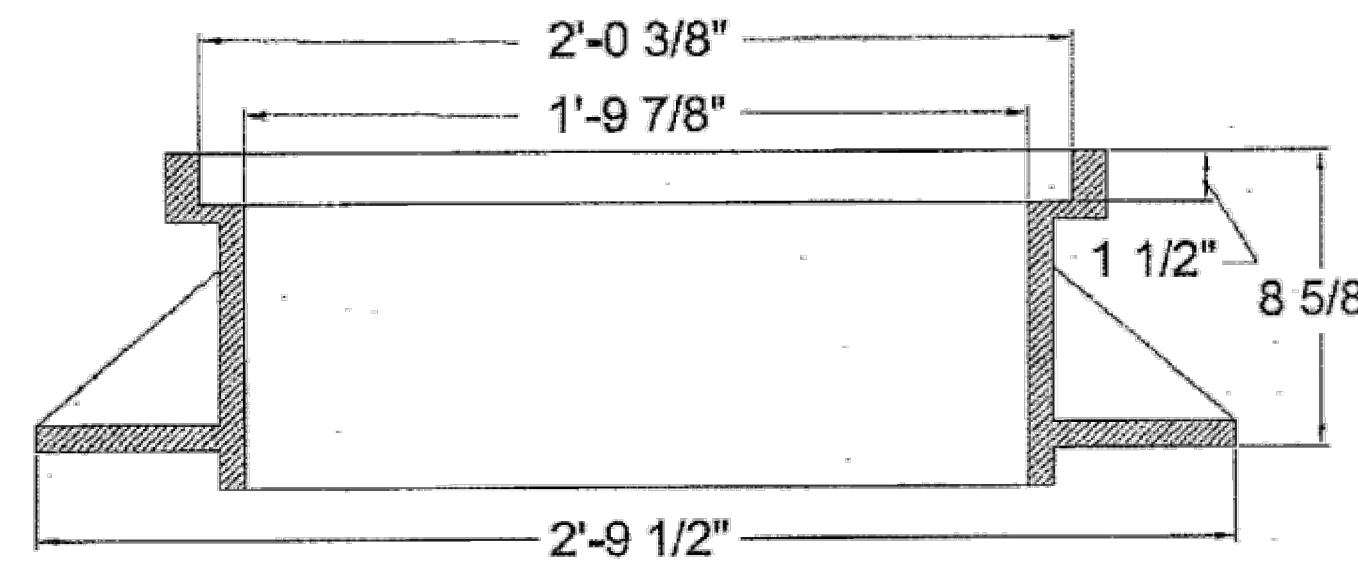


LS	LEE'S SUMMIT MISSOURI	Date: 09/16/04
	PUBLIC WORKS ENGINEERING DIVISION 220 SE GREEN STREET LEE'S SUMMIT, MO 64063	Drawn By: JN Checked By: DL File: SAN-3 Rev: 04/05/07
STANDARD 24" MANHOLE COVER		



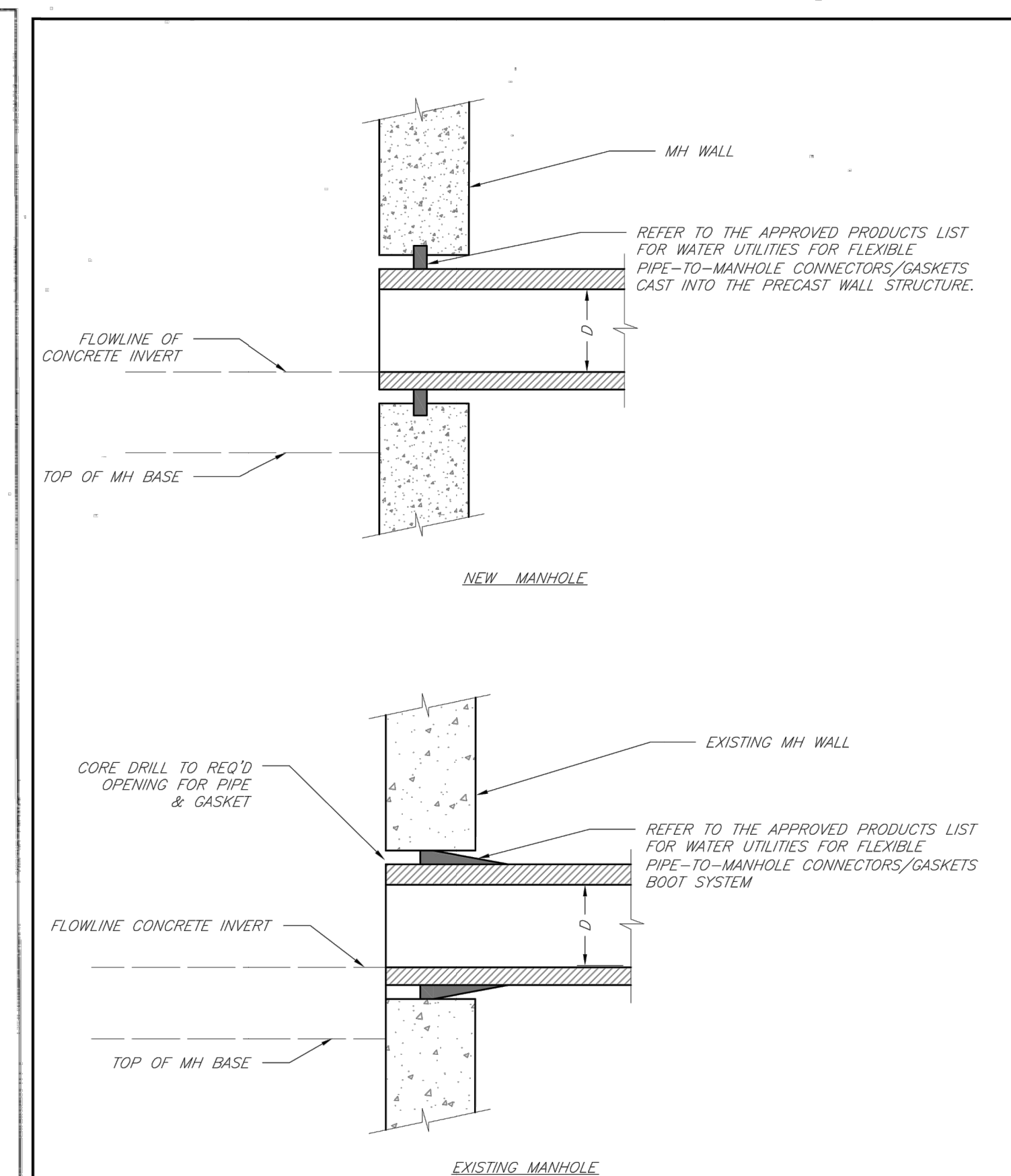
- NOTES:
1. ALL SEWER STUBS SHALL BE CONSTRUCTED TO PROPERTY LINE OR 10' MINIMUM FROM THE MAIN, WHERE SIDEWALKS ARE PRESENT, CONTRACTOR SHALL EXTEND SERVICE LINE UNDER EXISTING SIDEWALK TO TWO FEET BEYOND.
 2. ALL NEW CONSTRUCTION OFF SEWER STUBS SHALL BE TEMPORARILY MARKED WITH A MARKING STAKE, 36" ABOVE GROUND AND PAINTED GREEN.
 3. IMPERVIOUS TRENCH CHECKS SHALL BE PLACED ON BUILDING SEWER STUBS (AT LEAST 5' AWAY FROM THE SANITARY SEWER MAIN).
 4. TRENCH CHECKS ON THE BUILDING SEWER STUBS SHALL EXTEND 6" BELOW THE BOTTOM OF THE PIPE. LENGTH SHALL BE A MINIMUM OF 12". THE HEIGHT OF THE TRENCH CHECK SHALL EXTEND 12" ABOVE THE TOP OF THE PIPE. THE WIDTH OF THE TRENCH CHECK SHALL BE THE WIDTH OF THE TRENCH.
 5. SEE SPECIFICATION SECTION 2100 FOR SEWER MAIN BEDDING AND BACKFILL.
 6. #12 GAUGE GREEN INSULATED COPPER TRACER WIRE SHALL BE INSTALLED. TRACER WIRE TERMINAL BOXES SHALL BE INSTALLED DIRECTLY ABOVE THE SEWER SERVICE OR AS DETERMINED BY THE ENGINEER.
 7. FOR SERVICES, TRACER WIRE SHALL RUN FROM THE WYE AND TERMINATE IN A FLUSH MOUNTED TRACER BOX WITH A GREEN CAST IRON LOCKABLE TOP. WIRE SHALL BE TAPED OR TIED TO THE PIPE AT 5' INTERVALS.
 8. TRACER WIRE BOX SHALL BE INSTALLED WITHIN 1.0' OF PROPERTY LINE.
 9. THE TRACER WIRE SHALL REMAIN CONTINUOUS TO THE GREATEST EXTENT POSSIBLE. SPLICES IN THE TRACER WIRE SHOULD BE MADE WITH SPLIT BOLT CONNECTORS. WIRE NUTS SHALL NOT BE USED. A WATER-PROOF CONNECTION IS NECESSARY TO PREVENT CORROSION.

LS	LEE'S SUMMIT MISSOURI	Date: 04/17
	PUBLIC WORKS ENGINEERING DIVISION 220 SE GREEN STREET LEE'S SUMMIT, MO 64063	Drawn By: MIF Checked By: DL
BUILDING SEWER STUB AND RISER		SAN-1



Standard 24" Manhole Frame
Lee's Summit Part No.: LS101A
Minimum weight = 250 lb
Matching Cover: LS101B

LS	LEE'S SUMMIT MISSOURI	Date: 09/16/04
	PUBLIC WORKS ENGINEERING DIVISION 220 SE GREEN STREET LEE'S SUMMIT, MO 64063	Drawn By: JN Checked By: DL File: SAN-5 Rev: 01/04/07
STANDARD 24" MANHOLE FRAME		



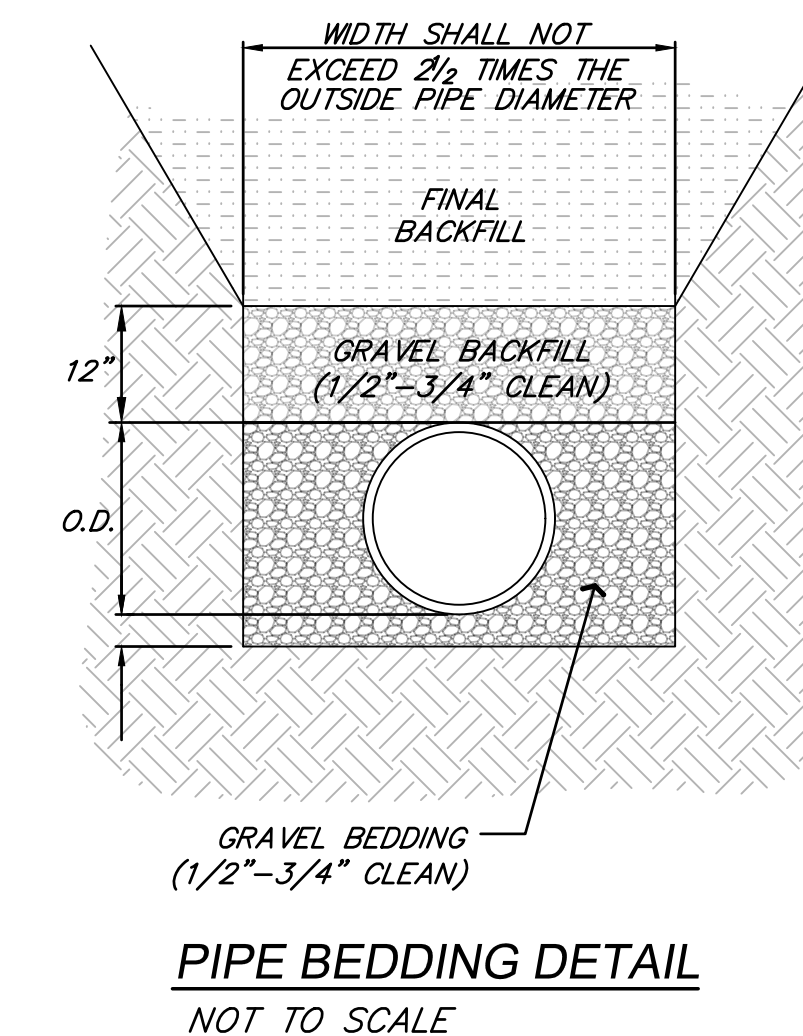
LS	LEE'S SUMMIT MISSOURI	Date: 02/13
	PUBLIC WORKS ENGINEERING DIVISION 220 SE GREEN STREET LEE'S SUMMIT, MO 64063	Drawn By: JN Checked By: DL File: SAN-5 Rev: 1/14
MANHOLE WALL CONNECTIONS		

BEDDING
1/2"-3/4" CLEAN AGGREGATE, HAND TAMPED OR MECHANICALLY COMPACTED IN MAX. 4" LIFTS

INITIAL BACKFILL
-UNDER PAVED AREAS OR WITHIN 4' HORIZONTAL OF PAVED AREAS
1/2"-3/4" CLEAN AGGREGATE, HAND TAMPED OR MECHANICALLY COMPACTED IN MAX. 4" LIFTS
-UNDER OPEN AREAS
1/2"-3/4" CLEAN AGGREGATE, HAND TAMPED OR MECHANICALLY COMPACTED IN MAX. 4" LIFTS

FINAL BACKFILL
-UNDER PAVED AREAS OR WITHIN 4' HORIZONTAL OF PAVED AREAS
ON-SITE OR IMPORTED MATERIAL FREE OF MUCK, FROZEN MATERIAL, EXCESS MOISTURE, ORGANICS, TOPSOIL, RUBBISH, CONSTRUCTION DEBRIS, ROCK OR BRICK LARGER THAN 8", COMPACTED TO 95% OF STANDARD DENSITY PER ASTM D-698
-UNDER OPEN AREAS
ON-SITE OR IMPORTED MATERIAL FREE OF MUCK, FROZEN MATERIAL, EXCESS MOISTURE, ORGANICS, TOPSOIL, RUBBISH, CONSTRUCTION DEBRIS, ROCK OR BRICK LARGER THAN 8", COMPACTED TO 90% OF STANDARD DENSITY PER ASTM D-698

BEDDING DEPTH BELOW PIPE		
PIPE DIAMETER	IN SOIL	IN ROCK
24" AND LESS	4"	6"
27" THRU 60"	4"	9"



ANDERSON ENGINEERING
EMPLOYEE OWNED

AE

ENGINEERS • SURVEYORS • LABORATORIES • DRILLING
941 W. 141ST TER • KANSAS CITY, MISSOURI 64145 • PHONE (816) 777-9400
A LICENSED MISSOURI ENGINEERING & SURVEYING CORPORATION - LC #2

DRAWING INFO.						
NO.	REVISIONS	DESCRIPTION	BY	DATE	DRAWN BY:	GC
1.	REVISED PER CITY COMMENTS		GC	1/15/21	CHECK BY:	ZM
2.	REVISED PER CITY COMMENTS		GC	2/26/21	LICENSE NO.:	FE-2012009232
					DATE:	12/22/2020
					ISSUED FOR:	FOR REVIEW
					JOB NUMBER:	20KCT0057
					M/C COA NO.:	00062

© COPYRIGHT ANDERSON ENGINEERING, INC. 2020

SUMMIT HOMES KC
HIGHLAND MEADOWS - 5TH PLAT

SANITARY SEWER DETAILS

S10, T47N, R22W
LEE'S SUMMIT, JACKSON COUNTY, MISSOURI

ZACH A. MYERS
PROFESSIONAL ENGINEER

SHEET NUMBER
C401
5 OF 5