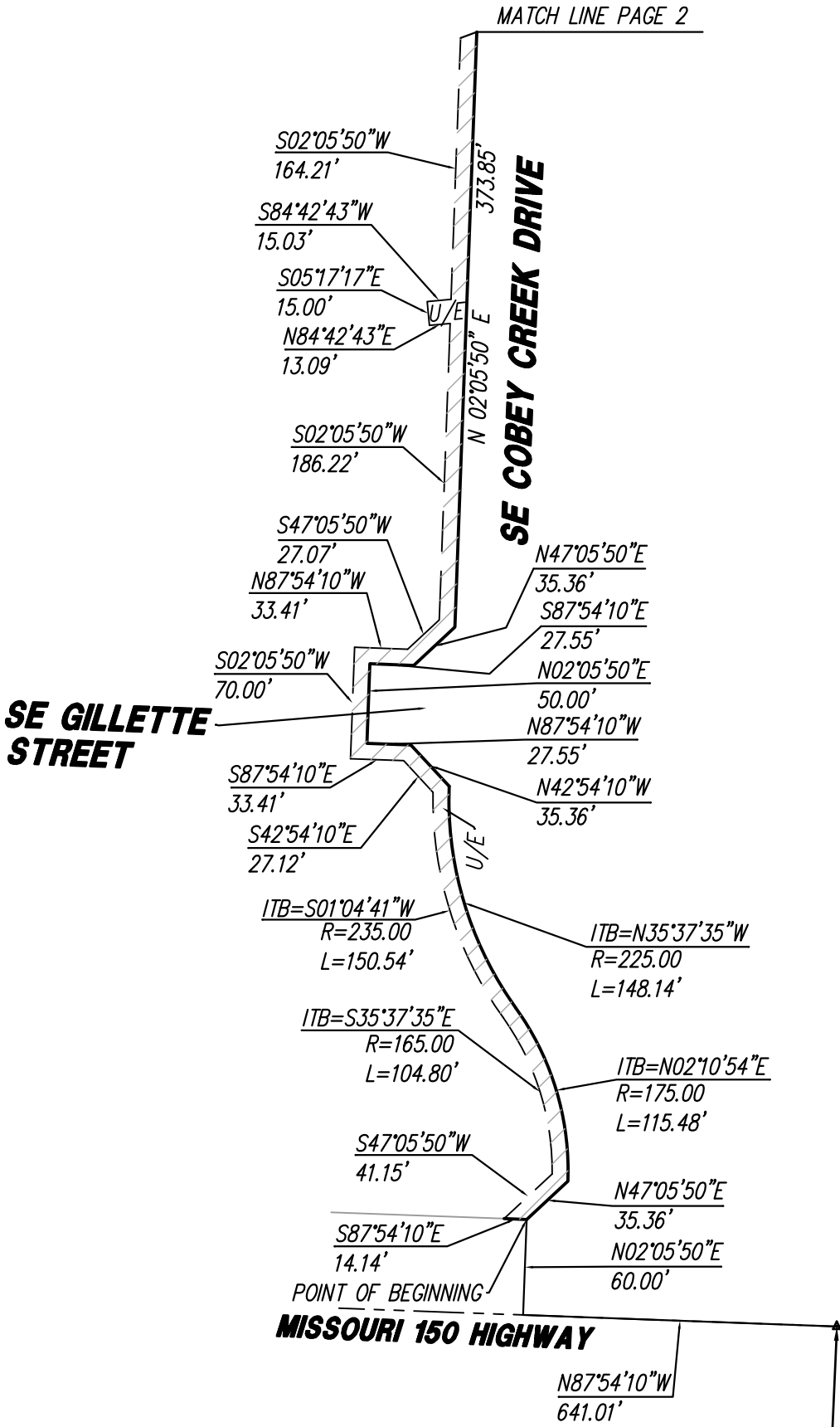
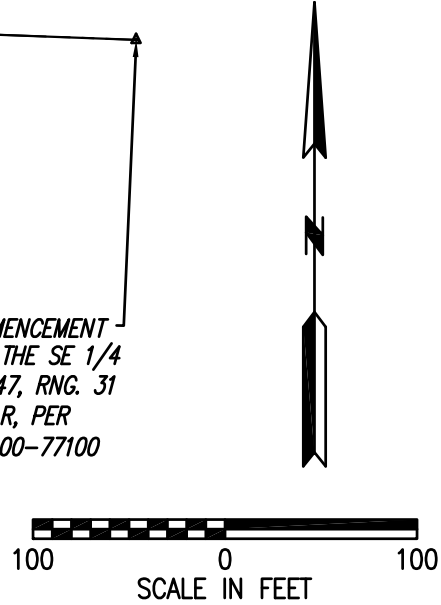


EASEMENT "7" UTILITY EASEMENT, PAGE 1 OF 3

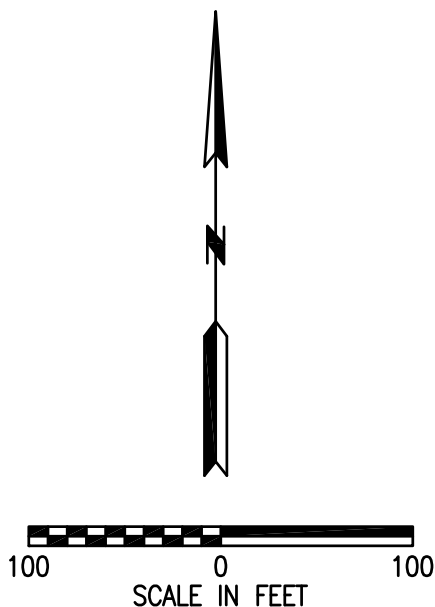
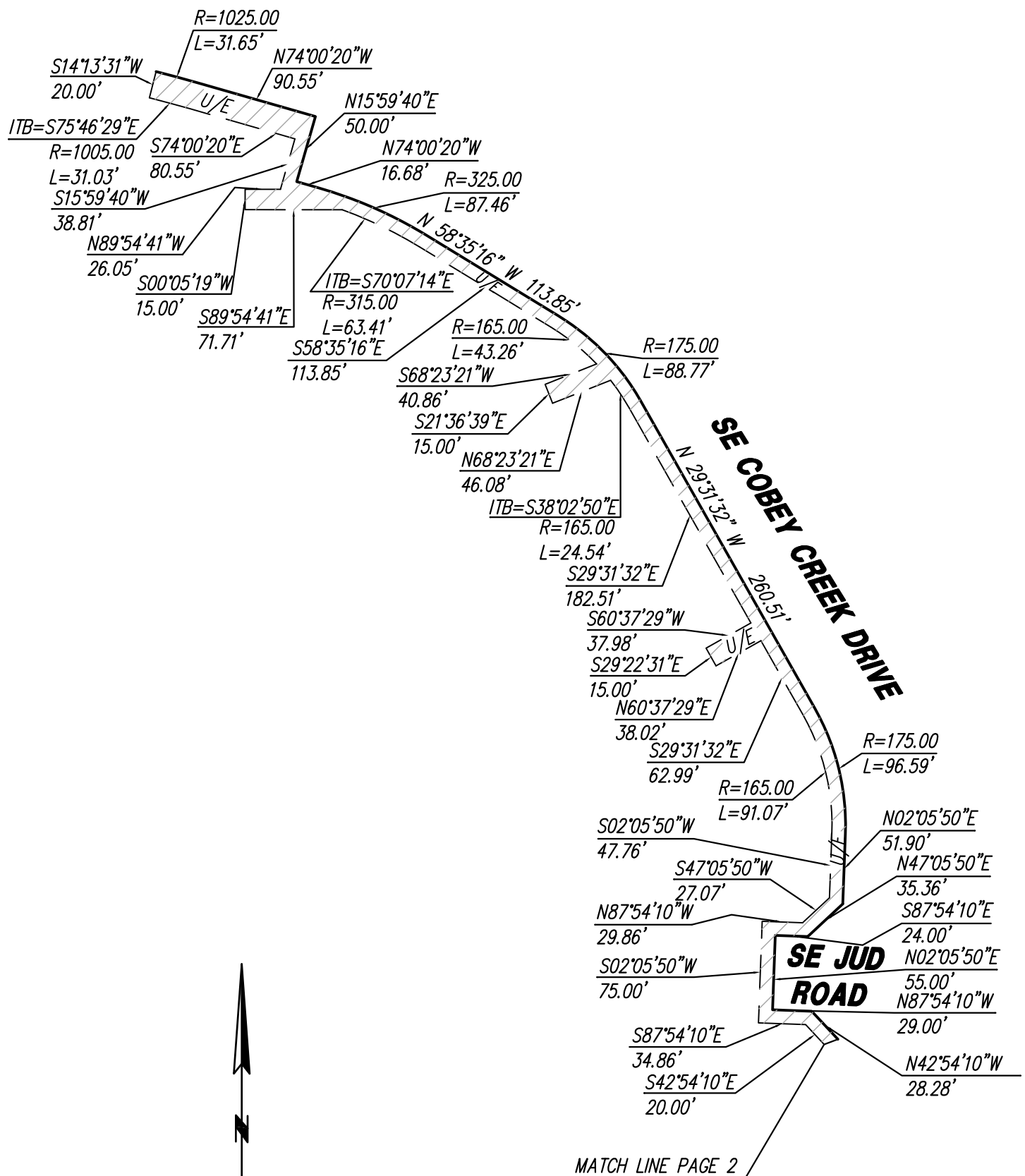


FEB. 24, 2021



LADWIG & ASSOCIATES, LLC.
LAND SURVEYORS
33604 E. 235th Street
Pleasant Hill, Missouri 64080
816-309-6621

EASEMENT "7" UTILITY EASEMENT, PAGE 2 OF 3



LADWIG & ASSOCIATES, LLC.
LAND SURVEYORS
33604 E. 235th Street
Pleasant Hill, Missouri 64080
816-309-6621

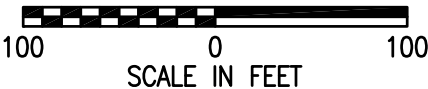


FEB. 24, 2021

EASEMENT "7" UTILITY EASEMENT, PAGE 3 OF 3

LEGAL DESCRIPTION:
A Utility Easement, said easement described as;

All that part of the Southeast quarter of Section 29, Township 47, Range 31, in the City of Lee's Summit, Jackson County, Missouri, more particularly described as; Commencing at the Southeast corner of said Southeast quarter; thence North 87 degrees 54 minutes 10 seconds West, along the South line of said quarter section, a distance of 641.01 feet; thence North 02 degrees 05 minutes 50 seconds East, a distance of 60.00 feet, to a point on the South Right-of-Way of Missouri 150 Highway, said point also being the Point of Beginning; thence North 47 degrees 05 minutes 50 seconds East, a distance of 35.36 feet; thence along a curve to the left having an initial tangent bearing of North 02 degrees 10 minutes 54 seconds East and a radius of 175.00 feet, an arc distance of 115.48 feet, to a point of reverse curve; thence along a curve to the right having an initial tangent bearing of North 35 degrees 37 minutes 35 seconds West and a radius of 225.00 feet, an arc distance of 148.14 feet; thence North 42 degrees 54 minutes 10 seconds West, a distance of 35.36 feet; thence North 87 degrees 54 minutes 10 seconds West, a distance of 27.55 feet; thence North 02 degrees 05 minutes 50 seconds East, a distance of 50.00 feet; thence South 87 degrees 54 minutes 10 seconds East, a distance of 27.55 feet; thence North 47 degrees 05 minutes 50 seconds East, a distance of 35.36 feet; thence North 02 degrees 05 minutes 50 seconds East, a distance of 373.85 feet; thence North 42 degrees 54 minutes 10 seconds West, a distance of 28.28 feet; thence North 87 degrees 54 minutes 10 seconds West, a distance of 29.00 feet; thence North 02 degrees 05 minutes 50 seconds East, a distance of 55.00 feet; thence South 87 degrees 54 minutes 10 seconds East, a distance of 24.00 feet; thence North 47 degrees 05 minutes 50 seconds East, a distance of 35.36 feet; thence North 02 degrees 05 minutes 50 seconds East, a distance of 51.90 feet; thence along a curve to the left having a radius of 175.00 feet, an arc distance of 96.59 feet; thence North 29 degrees 31 minutes 32 seconds West, a distance of 260.51 feet; thence along a curve to the left having a radius of 175.00 feet, an arc distance of 88.77 feet; thence North 58 degrees 35 minutes 16 seconds West, a distance of 113.85 feet; thence along a curve to the left having a radius of 325.00 feet, an arc distance of 87.45 feet; thence North 74 degrees 00 minutes 20 seconds West, a distance of 16.68 feet; thence North 15 degrees 59 minutes 40 seconds East, a distance of 50.00 feet; thence North 74 degrees 00 minutes 20 seconds West, a distance of 90.55 feet; thence along a curve to the left having a radius of 1025.00 feet, an arc distance of 31.65 feet; thence South 14 degrees 13 minutes 31 seconds West, a distance of 20.00 feet; thence along a curve to the right having an initial tangent bearing of South 75 degrees 46 minutes 29 seconds East a radius of 1005.00 feet, an arc distance of 31.03; thence South 74 degrees 00 minutes 20 seconds East, a distance of 80.55 feet; thence South 15 degrees 59 minutes 40 seconds West, a distance of 38.81 feet; thence North 89 degrees 54 minutes 41 seconds West, a distance of 26.05 feet; thence South 00 degrees 05 minutes 19 seconds West, a distance of 15.00 feet; thence South 89 degrees 54 minutes 41 seconds East, a distance of 71.71 feet; thence along a curve to the right having an initial tangent bearing of South 70 degrees 07 minutes 14 seconds East, a radius of 315.00 feet, an arc distance of 63.41 feet; thence South 58 degrees 35 minutes 16 seconds East, a distance of 113.85 feet; thence along a curve to the right having a radius of 165.00 feet, an arc distance of 43.26 feet; thence South 68 degrees 23 minutes 21 seconds West, a distance of 40.86 feet; thence South 21 degrees 36 minutes 39 seconds East, a distance of 15.00 feet; thence North 68 degrees 23 minutes 21 seconds East, a distance of 46.08 feet; thence along a curve to the right having an initial tangent bearing of South 38 degrees 02 minutes 50 seconds East, a radius of 165.00 feet, an arc distance of 24.54 feet; thence South 29 degrees 31 minutes 32 seconds East, a distance of 182.51 feet; thence South 60 degrees 37 minutes 29 seconds West, a distance of 37.98 feet; thence South 29 degrees 22 minutes 31 seconds East, a distance of 15.00 feet; thence North 60 degrees 37 minutes 29 seconds East, a distance of 38.02 feet; thence South 29 degrees 31 minutes 32 seconds East, a distance of 62.99 feet; thence along a curve to the right having a radius of 165.00 feet, an arc distance of 91.07 feet; thence South 02 degrees 05 minutes 50 seconds West, a distance of 47.76 feet; thence South 47 degrees 05 minutes 50 seconds West, a distance of 27.07 feet; thence North 87 degrees 54 minutes 10 seconds West, a distance of 29.86 feet; thence South 02 degrees 05 minutes 50 seconds West, a distance of 75.00 feet; thence South 87 degrees 54 minutes 10 East, a distance of 34.86 feet; thence South 42 degrees 54 minutes 10 seconds East, a distance of 20.00 feet; thence South 02 degrees 05 minutes 50 seconds West, a distance of 164.21 feet; thence South 84 degrees 42 minutes 43 seconds West, a distance of 15.03 feet; thence South 05 degrees 17 minutes 17 seconds East, a distance of 15.00 feet; thence North 84 degrees 42 minutes 43 seconds East, a distance of 13.09 feet; thence South 02 degrees 05 minutes 50 seconds West, a distance of 186.22 feet; thence South 47 degrees 05 minutes 50 seconds West, a distance of 27.07 feet; thence North 87 degrees 54 minutes 10 seconds West, a distance of 33.41 feet; thence South 02 degrees 05 minutes 50 seconds West, a distance of 70.00 feet; thence South 87 degrees 54 minutes 10 seconds East, a distance of 33.41 feet; thence South 42 degrees 54 minutes 10 seconds East, a distance of 27.12 feet; thence along a curve to the left having an initial tangent bearing of South 01 degrees 04 minutes 41 seconds West, a radius of 235.00 feet, an arc distance of 150.54 feet; thence along a curve to the right having an initial tangent bearing of South 35 degrees 37 minutes 35 seconds East, a radius of 165.00 feet, an arc distance of 104.80 feet; thence South 47 degrees 05 minutes 50 seconds West, a distance of 41.15 feet; thence South 87 degrees 54 minutes 10 seconds East, a distance of 14.14 feet, to the Point of Beginning. Containing 22,360.56 Sq.Ft.



LADWIG & ASSOCIATES, LLC.
LAND SURVEYORS
33604 E. 235th Street
Pleasant Hill, Missouri 64080
816-309-6621

FEB. 24, 2021