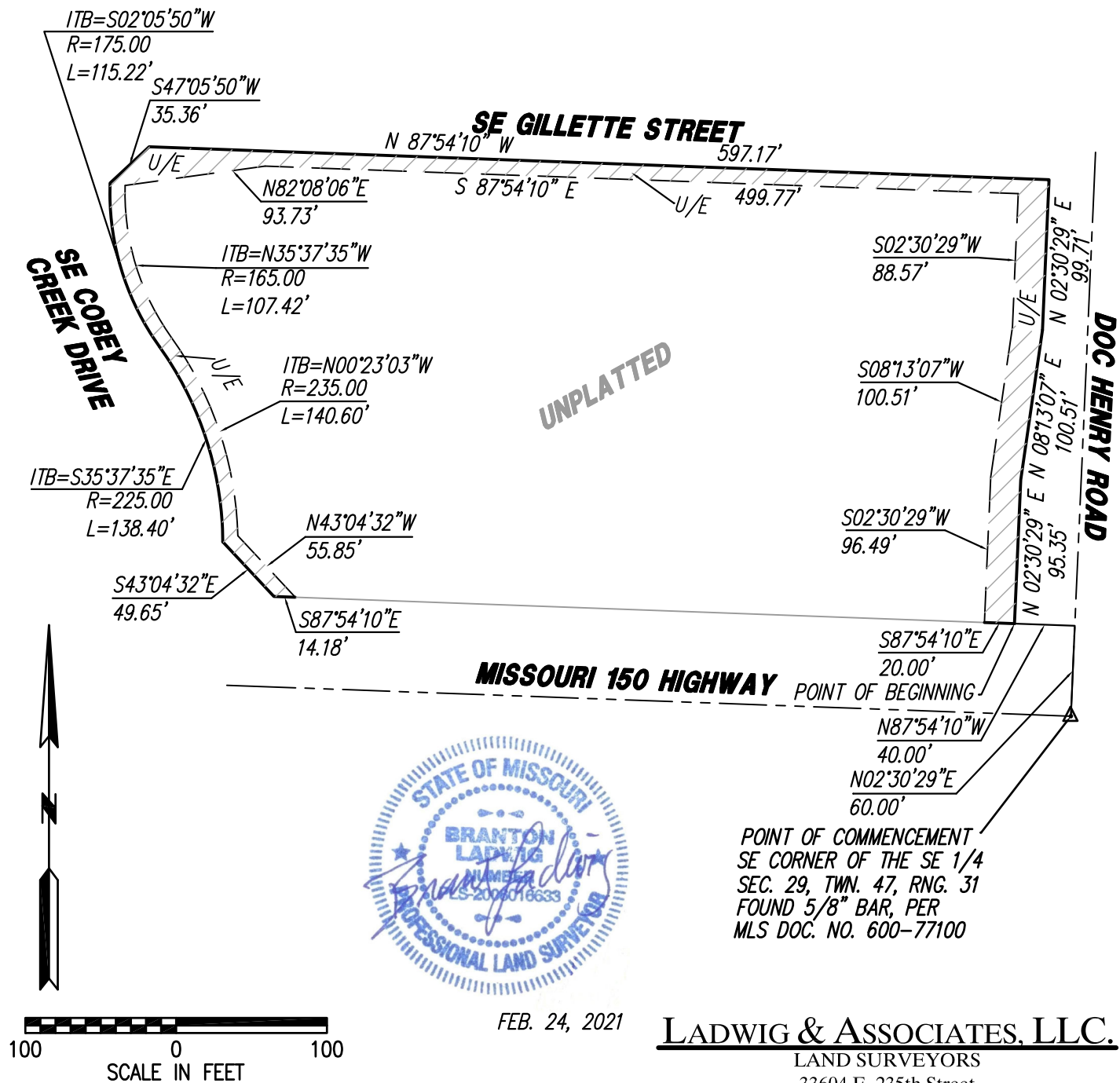


EASEMENT "6" UTILITY EASEMENT



LEGAL DESCRIPTION:

A Utility Easement, said easement described as;

All that part of the Southeast quarter of Section 29, Township 47, Range 31, in the City of Lee's Summit, Jackson County, Missouri, more particularly described as; Commencing at the Southeast corner of said Southeast quarter; thence North 02 degrees 30 minutes 29 seconds East, along the East line of said quarter section, a distance of 60.00 feet; thence North 87 degrees 54 minutes 10 seconds West, a distance of 40.00 feet, to a point on the West Right-of-Way of Doc Henry Road, as now established, said point also being the Point of Beginning; thence in a Northerly direction along the Right-of-Way of said Doc Henry Road, the following 3 courses; thence North 02 degrees 30 minutes 29 seconds East, a distance of 95.35 feet; thence North 08 degrees 13 minutes 07 seconds East, a distance of 100.51 feet; thence North 02 degrees 30 minutes 29 seconds East, a distance of 99.71 feet, to a point on the South Right-of-Way of Gillette Street; thence North 87 degrees 54 minutes 10 seconds West, along said South Right-of-Way line, a distance of 597.17 feet; thence South 47 degrees 05 minutes 50 seconds West, a distance of 35.36 feet, to a point on the East Right-of-Way of Cobey Creek Drive; thence along a curve to the left, (said curve having an Initial Tangent Bearing of South 02 degrees 05 minutes 50 seconds West, a radius of 175.00 feet), an arc distance of 115.22 feet; thence along a curve to the right, (said curve having an Initial Tangent Bearing of South 35 degrees 37 minutes 35 seconds East, a radius of 225.00 feet), an arc distance of 138.40 feet; thence South 43 degrees 04 minutes 32 seconds East, a distance of 49.65 feet, to a point on the North Right-of-Way line of Missouri 150 Highway; thence South 87 degrees 54 minutes 10 seconds East, along said North Right-of-Way line, a distance of 14.18 feet; thence North 43 degrees 04 minutes 32 seconds West, a distance of 55.85 feet; thence along a curve to the left, (said curve having an Initial Tangent Bearing of North 00 degrees 23 minutes 03 seconds West, a radius of 235 feet), an arc distance of 140.60 feet; thence along a curve to the right, (said curve having an Initial Tangent Bearing of North 35 degrees 37 minutes 35 seconds West, a radius of 165.00 feet), an arc distance of 107.42 feet; thence North 82 degrees 08 minutes 06 seconds East, a distance of 93.73 feet; thence South 87 degrees 54 minutes 10 seconds East, a distance of 499.77 feet; thence South 02 degrees 30 minutes 29 seconds West, a distance of 88.57 feet; thence South 08 degrees 13 minutes 07 seconds West, a distance of 100.51 feet; thence South 02 degrees 30 minutes 29 seconds West, a distance of 96.49 feet, to a point on the North Right-of-Way line of Missouri 150 Highway; thence South 87 degrees 54 minutes 10 seconds East, along said North Right-of-Way line, a distance of 20.00 feet, to the Point of Beginning. Containing 15,560.63 Sq.Ft.