

Model: G-098-VG

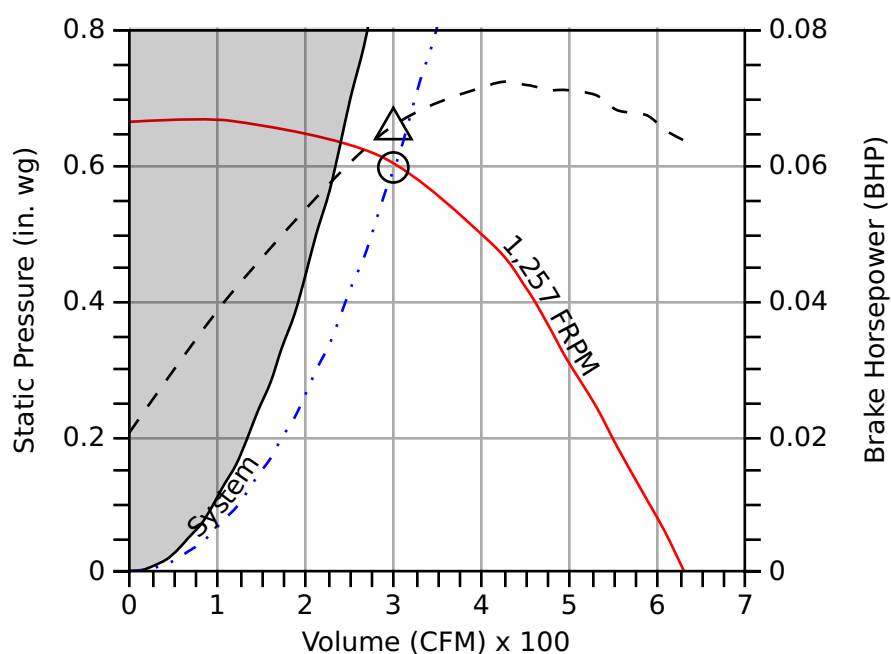
Direct Drive Centrifugal Roof Exhaust Fan

Standard Construction Features: Aluminum housing. Centrifugal backward inclined aluminum (composite for sizes 60-95) wheel. Direct driven motor mounted on vibration isolation.

Fan Configuration	
Drive type	Direct

Performance	
Requested Volume (CFM)	300
Actual Volume (CFM)	300
Total External SP (in. wg)	0.6
Fan RPM	1,257
Operating Power (bhp)	0.07
Startup Power (bhp)	0.07
Air Stream Temp (F)	70
Start-up Temp (F)	70
Air Density (lbs/ft ³)	0.072
Elevation (ft)	1038
Static Efficiency (%)	43
Outlet Velocity (ft/min)	313

Motor	
Size (hp)	1/4
V/C/P	115/60/1
NEC FLA (Amps)	2.85



- Fan curve
- - - Brake horsepower curve
- Operating Point SP
- △ Operating Bhp point
- Max system curve
- ... System curve

Static Pressure Calculations

External SP	0.56 in. wg
Backdraft Damper	0.04 in. wg
Total External SP	0.6 in. wg

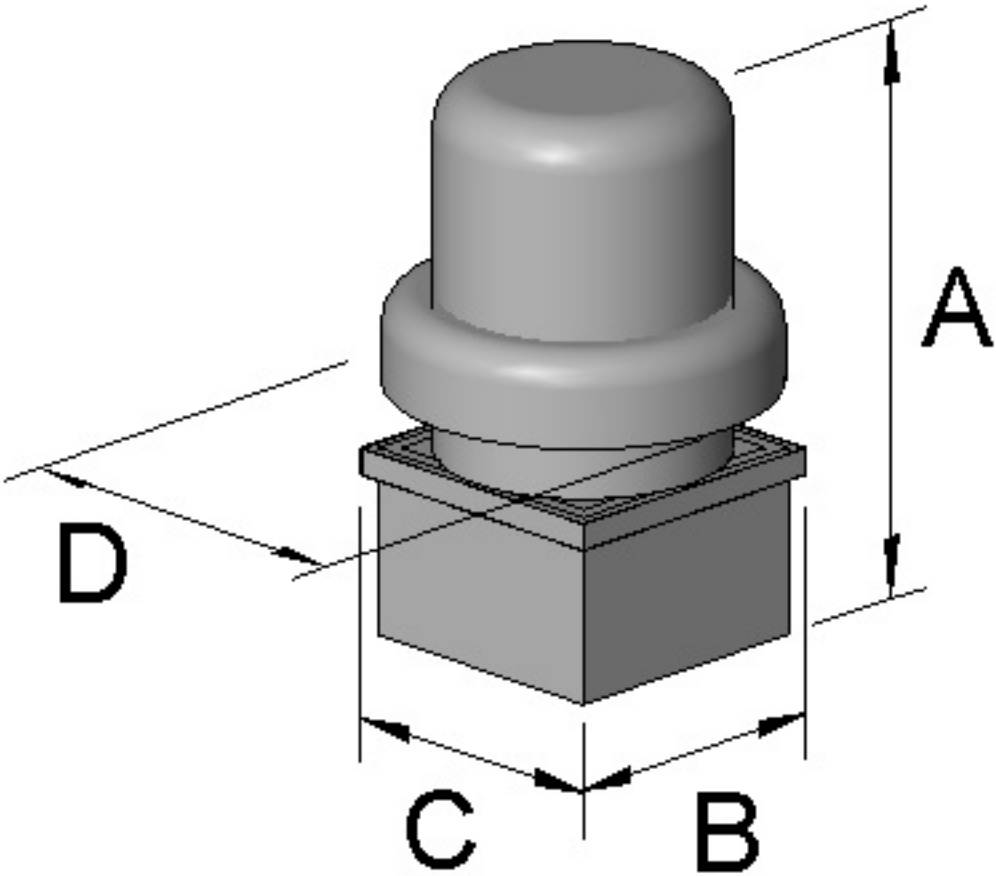
Sound

	Octave Bands (hz)								LwA	dBA	Sones
	62.5	125	250	500	1000	2000	4000	8000			
Inlet	71	69	68	60	55	52	45	41	64	52	6.4



Greenheck Fan Corporation certifies that the model shown herein is licensed to bear the AMCA Seal. The ratings shown are based on tests and procedures performed in accordance with AMCA Publication 211 and AMCA Publication 311 and comply with the requirements of the AMCA Certified Ratings Program. The AMCA certified ratings seal applies to sound and air performance ratings only. Performance certified is for installation type A: Free inlet, free outlet. Power rating does not include transmission losses. Performance ratings include the effects of birdscreen. The AMCA licensed air and/or sound performance data has been modified for installation, appurtenances, etc. not included in the certified data. The modified performance is not AMCA licensed but is provided to aid in selection and applications of the product. The sound ratings shown are loudness values in hemispherical sones at 1.5 m (5 ft) in a hemispherical free field calculated per ANSI/AMCA Standard 301. Values shown are for Installation Type A: free inlet hemispherical sone levels. dBA levels are not licensed by AMCA International. The AMCA Certified Ratings Seal for Sound applies to inlet sone ratings only.

Dimensions and Weights		
Label	Value	Description
-	38	Weight w/o accessories (lbs)
A	36	Overall Height (in)
D	24	Overall Width (in)
B	19	Curb Cap Width (in)
C	19	Curb Cap Length (in)
-	12	Duct / Damper Width (in)
-	12	Duct / Damper Length (in)
-	14.5	Roof Opening Width (in)
-	14.5	Roof Opening Length (in)



*All dimensions are in inches.