

QUANTITIES		
ITEM	UNIT	AMOUNT
4' DIA MANHOLES	EA	2
8" PVC SANITARY SEWER MAIN	LF	220
MANHOLES LESS THAN 8'	EA	2

UTILITIES
Electric Service
KCP&L
Nathan Michael
913-347-4310
Nathan.michael@kcpl.com

Gas Service
Spire
Katie Darnell
816-969-2247
Katie.darnell@spireenergy.com

Water/Sanitary Sewer
Water Utilities Department
1200 SE Hamblen Road
Lee's Summit, Mo 64081
Jeff Thorn
816-969-1900
jeff.thorn@cityofls.net

Communication Service
AT&T Carrie Cilke
816-703-4386
cc3527@att.com

Time Warner Cable
Steve Baxter
913-643-1928
steve.baxter@charter.com

Comcast
Ryan Alkire
816-795-2218
ryan.alkire@cable.comcast.com

Google Fiber
Becky Davis
913-725-8745
rebeccadavis@google.com

UTILITY STATEMENT:

THE UNDERGROUND UTILITIES SHOWN HEREON ARE FROM FIELD SURVEY INFORMATION OF ONE-CALL LOCATED UTILITIES, FIELD SURVEY INFORMATION OF ABOVE GROUND OBSERVABLE EVIDENCE, AND/OR THE SCALING AND PLOTTING OF EXISTING UTILITY MAPS AND DRAWINGS AVAILABLE TO THE SURVEYOR AT THE TIME OF SURVEY. THE SURVEYOR MAKES NO GUARANTEE THAT THE UNDERGROUND UTILITIES SHOWN COMPRISE ALL SUCH UTILITIES IN THE AREA, EITHER IN SERVICE OR ABANDONED. FURTHERMORE, THE SURVEYOR DOES NOT WARRANT THAT THE UNDERGROUND UTILITIES SHOWN ARE IN THE EXACT LOCATION INDICATED ALTHOUGH HE DOES CERTIFY THAT THEY ARE LOCATED AS ACCURATELY AS POSSIBLE FROM INFORMATION AVAILABLE. THE SURVEYOR HAS NOT PHYSICALLY LOCATED THE UNDERGROUND UTILITIES BY EXCAVATION UNLESS OTHERWISE NOTED ON THIS SURVEY.

SAFETY NOTICE TO CONTRACTOR

IN ACCORDANCE WITH GENERALLY ACCEPTED CONSTRUCTION PRACTICE, THE CONTRACTOR WILL BE SOLELY AND COMPLETELY RESPONSIBLE FOR CONDITIONS OF THE JOB SITE, INCLUDING SAFETY OF ALL PERSONS AND PROPERTY DURING PERFORMANCE OF THE WORK. THIS REQUIREMENT WILL APPLY CONTINUOUSLY AND NOT BE LIMITED TO NORMAL WORKING HOURS.

WARRANTY/DISCLAIMER

THE DESIGNS REPRESENTED IN THESE PLANS ARE IN ACCORDANCE WITH ESTABLISHED PRACTICES OF CIVIL ENGINEERING FOR THE DESIGN FUNCTIONS AND USES INTENEDED BY THE OWNER AT THIS TIME. HOWEVER, NEITHER SM ENGINEERING NOR ITS PERSONNEL CAN OR DO WARRANTY THESE DESIGNS OR PLANS AS CONSTRUCTED, EXCEPT IN THE SPECIFIC CASES WHERE SM ENGINEERING PERSONNEL INSPECT AND CONTROL THE PHYSICAL CONSTRUCTION ON A CONTEMPORARY BASIS AT THE SITE.

CAUTION- NOTICE TO CONTRACTOR

THE CONTRACTOR IS SPECIFICALLY CAUTIONED THAT THE LOCATION AND/OR ELEVATION OF EXISTING UTILITIES AS SHOWN ON THESE PLANS IS BASED ON RECORDS OF THE VARIOUS UTILITY COMPANIES AND, WHERE POSSIBLE, MEASUREMENTS TAKEN IN THE FIELD. THE INFORMATION IS NOT TO BE RELIED ON AS BEING EXACT OR COMPLETE. THE CONTRACTOR MUST CALL THE APPROPRIATE UTILITY COMPANY AT LEAST 72 HOURS BEFORE ANY EXCAVATION TO REQUEST EXACT FIELD LOCATION OF UTILITIES. IT SHALL BE THE RESPONSIBILITY OF THE CONTRACTOR TO RELOCATE ALL EXISTING UTILITIES WHICH CONFLICT WITH PROPOSED IMPROVEMENTS SHOWN ON THE PLANS. THE CONTRACTOR SHALL EXPOSE EXISTING UTILITIES AT LOCATIONS OF POSSIBLE CONFLICTS PRIOR TO ANY CONSTRUCTION.



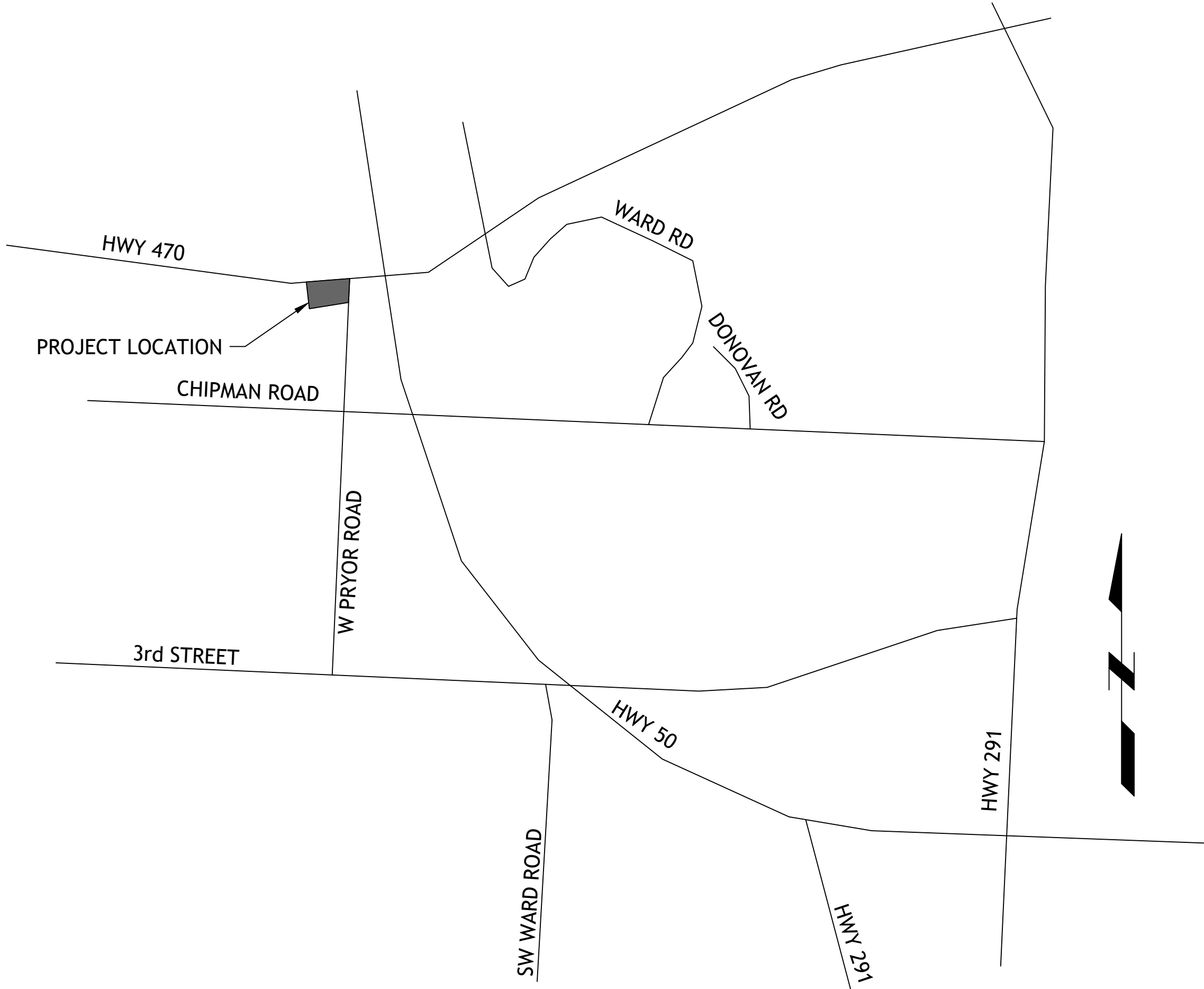
SANITARY SEWER

FOR

LOTS 11 &12

STREETS OF WEST PRYOR

LEE'S SUMMIT, MO



LOCATION MAP

LEGAL DESCRIPTION:
LOT 10, STREETS OF WEST PRYOR, LEE'S SUMMIT, JACKSON COUNTY MISSOURI
LOT AREA 3.25 ACRES

ALL EXISTING TOPOGRAPHIC DATA AND INFRASTRUCTURE IMPROVEMENTS SHOWN BASED ON INFORMATION BY KAW VALLEY ENGINEERING

BENCHMARKS:
#1 CHISELED "SQUARE" ON TOP OF CURB POINT OF INTERSECTION OF WEST PARK PARKING LOT AT EAST DRIVE ENTRANCE
4.975.05

#2 CHISELED "SQUARE" ON NORTHWEST CORNER AREA INLET, 25' EAST OF CURB LINE AND ON-LINE WITH SOUTH CURB OF LOWENSTEIN DRIVE AT 90° BEND IN ROAD
ELEVATION 970.98

INDEX OF SHEETS

- C-1 COVER SHEET
- C-2 SITE PLAN
- C-3 SANITARY LINE A PLAN AND PROFILE
- C-4 DETAILS

DEVELOPER

STREETS OF WEST PRYOR, LLC
DAVID N. OLSON
7200 W 133rd ST, SUITE 150
CELL: OVERLAND PARK, KS 66213
314-413-3598

ENGINEER

SM ENGINEERING
SAM MALINOWSKY
919 W STEWART RD
COLUMBIA, MO. 65203
785-641-9747

APPROVED THIS _____ DAY OF _____
OWNER: MATT GIBBS

APPROVED THIS _____ DAY OF _____
CITY APPROVAL



SAMUEL D. MALINOWSKY
PROFESSIONAL ENGINEER

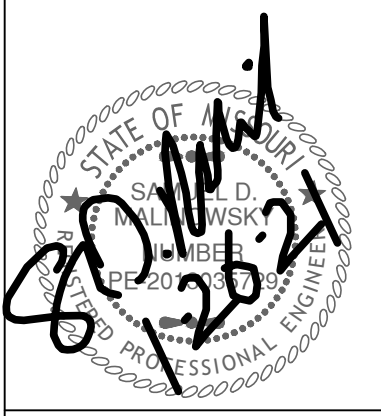
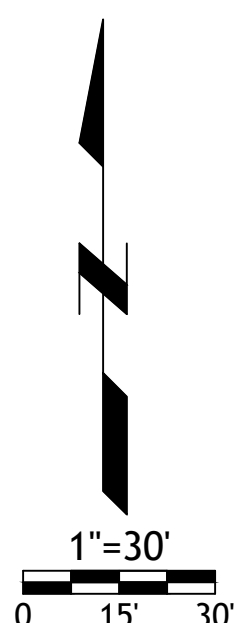
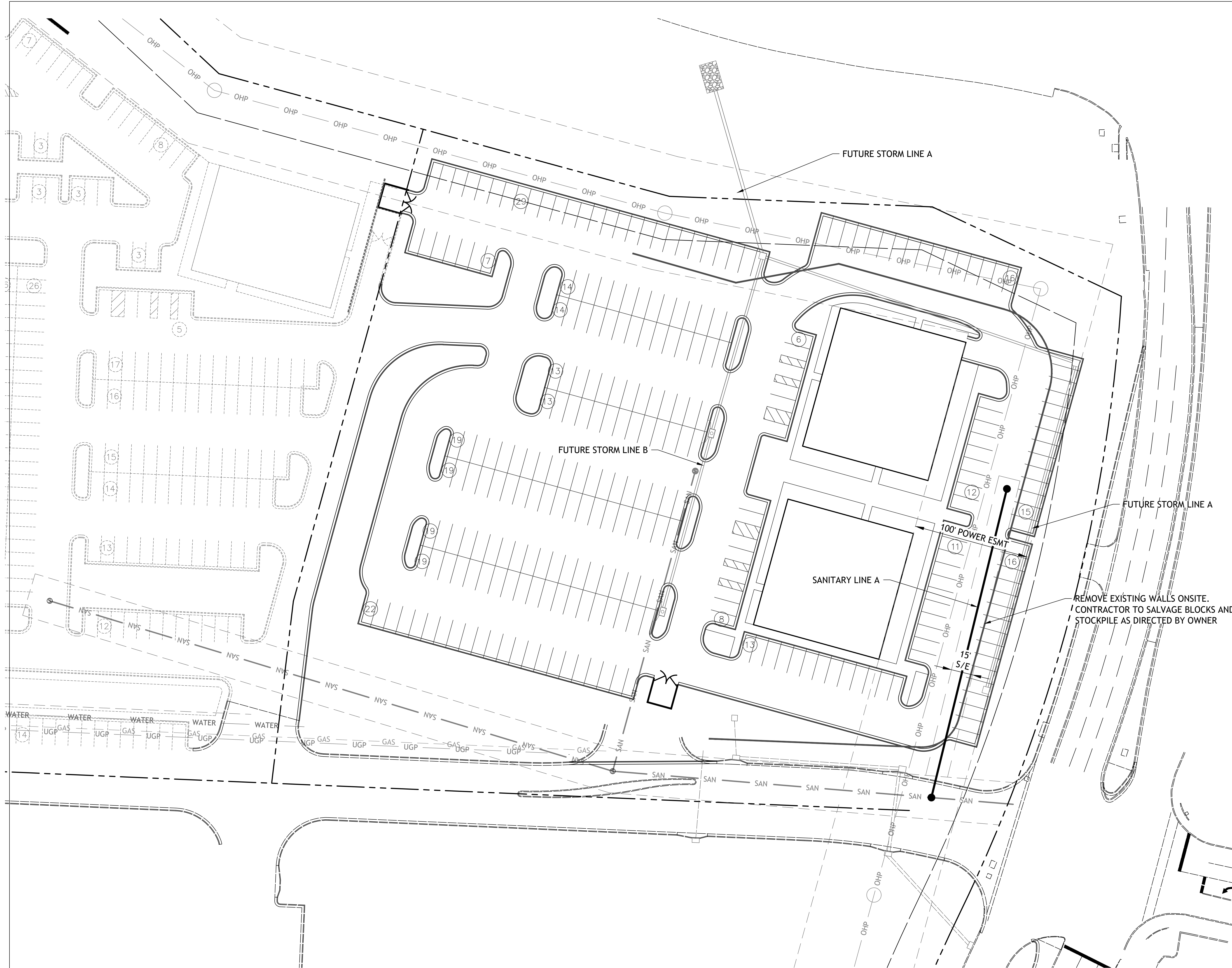
SM Engineering
5507 High Meadow Circle
Manhattan Kansas, 66503
smcivilengr@gmail.com
785.341.9747

Drawings and/or Specifications are original proprietary work and property of the Engineer and intended specifically for this project. Use of items contained herein without consent of the Engineer is prohibited. Drawings illustrate best information available to the Engineer. Field verification of actual elements, conditions, and dimensions is required.

Revisions

LOTS 11 & 12
STREETS OF WEST PRYOR
LEE'S SUMMIT, MISSOURI

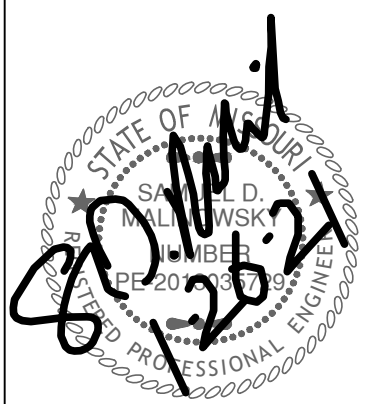
s h e e t
C1.0
Civil
COVER SHEET
permit
26 JANUARY 2021



Revisions

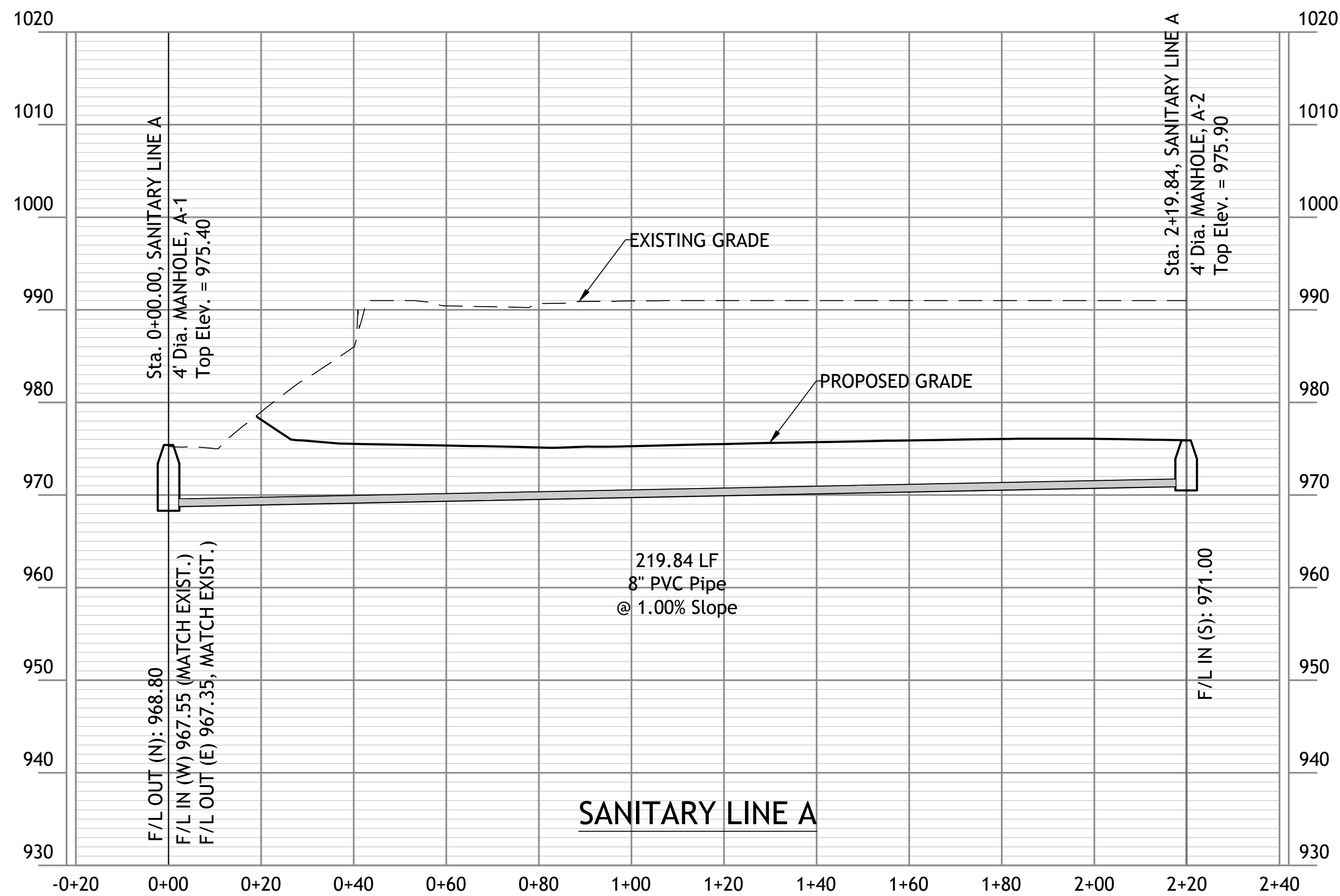
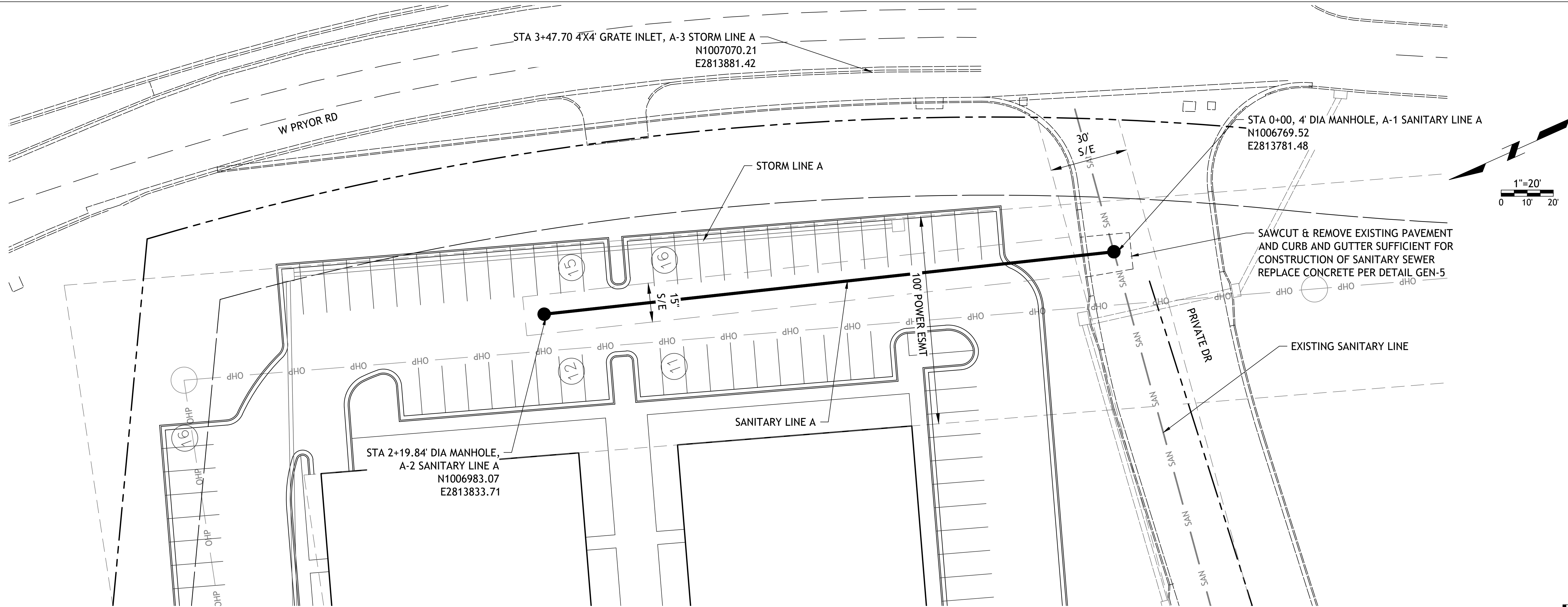
LOTS 11 & 12
STREETS OF WEST PRYOR
LEE'S SUMMIT, MISSOURI

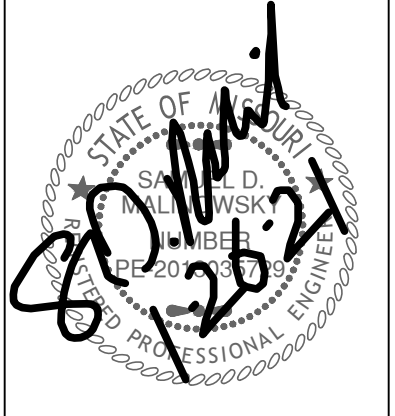
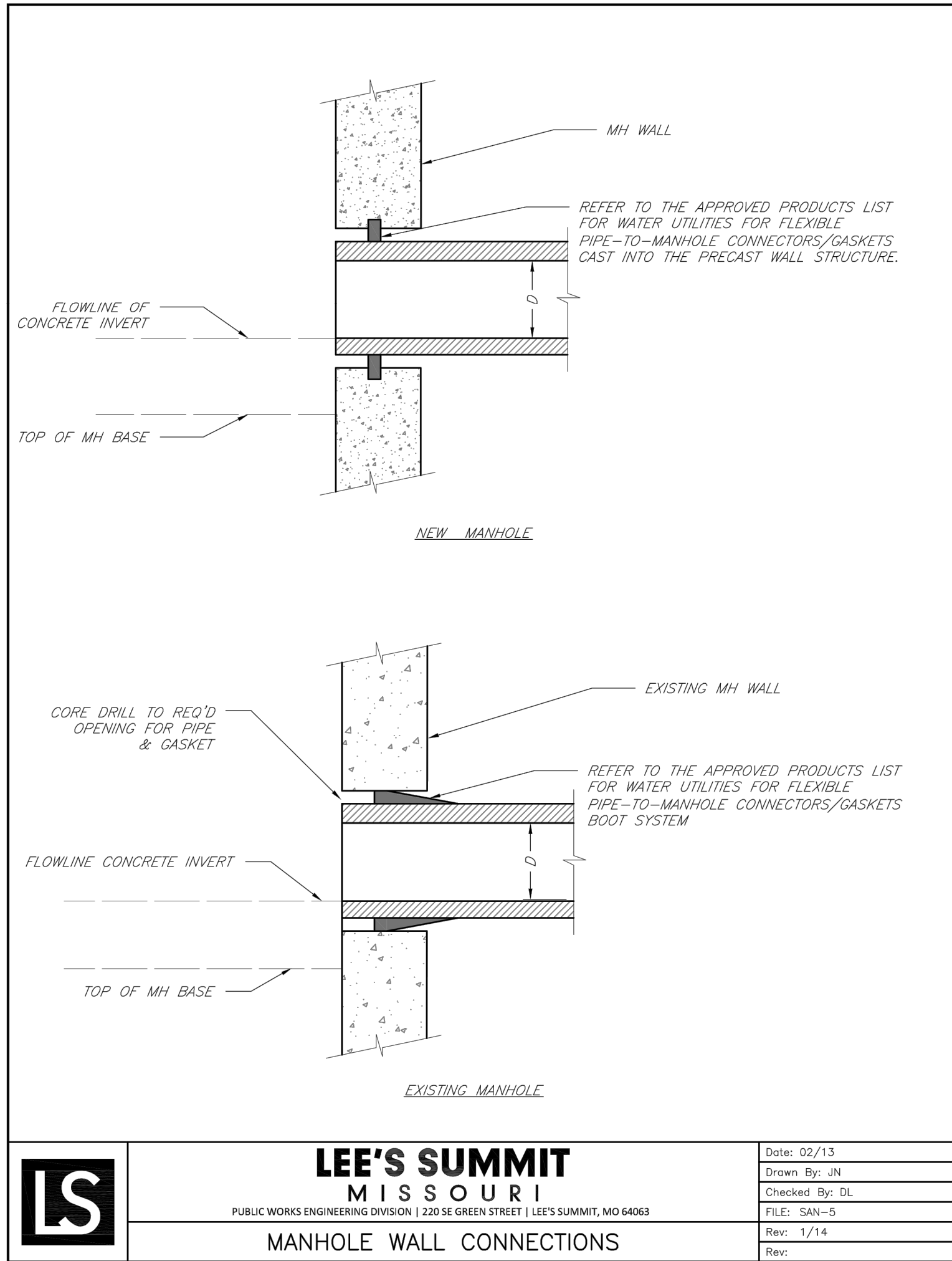
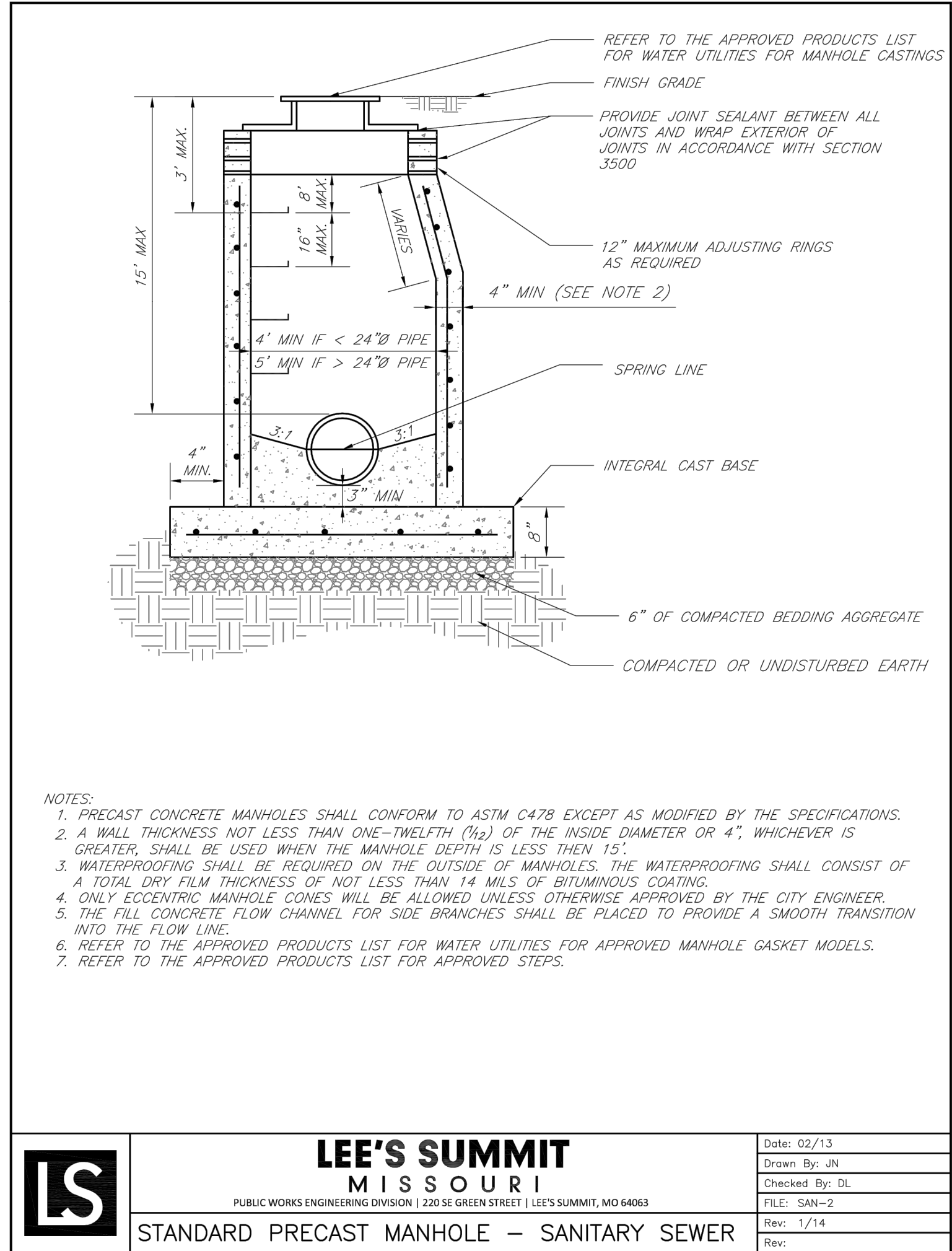
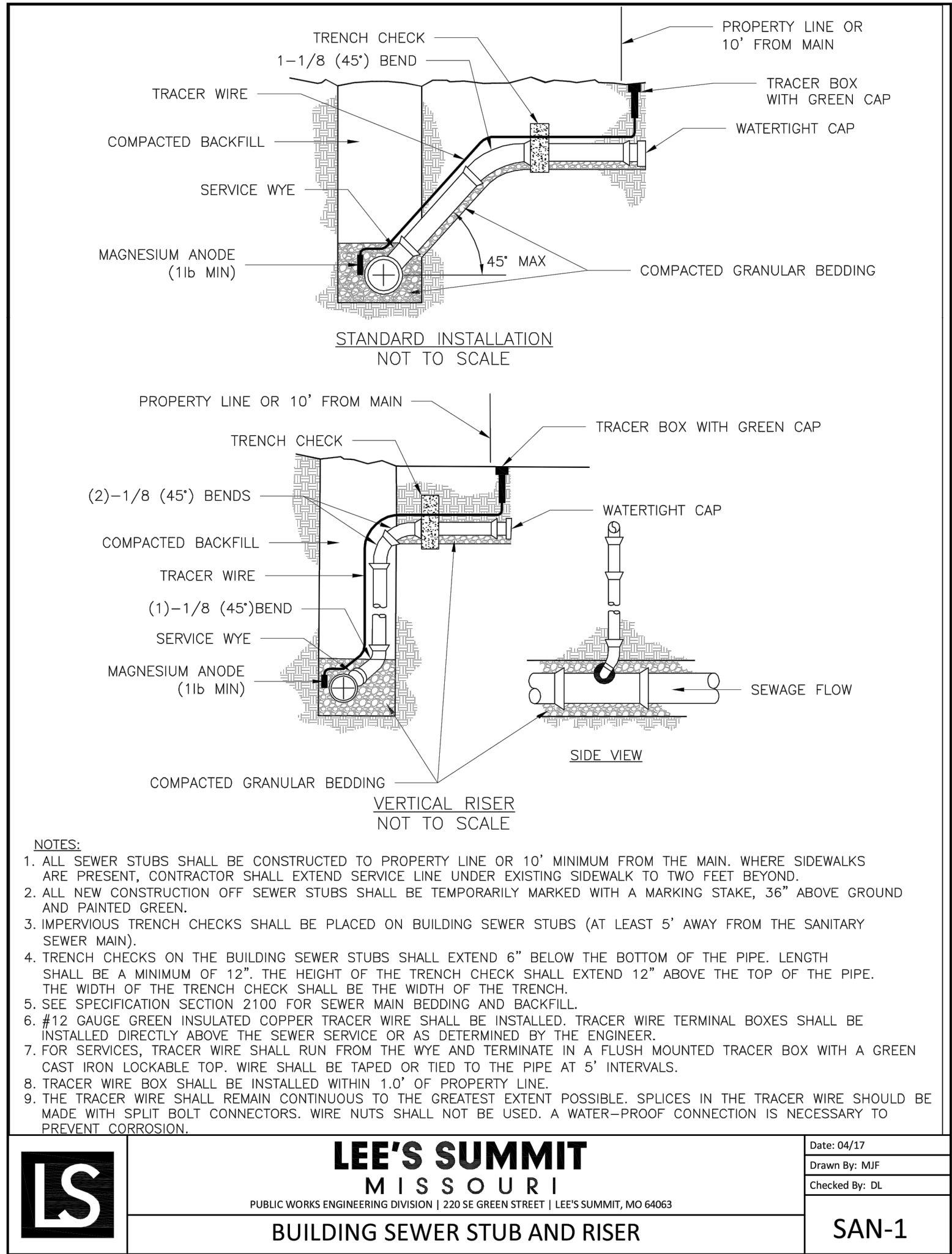
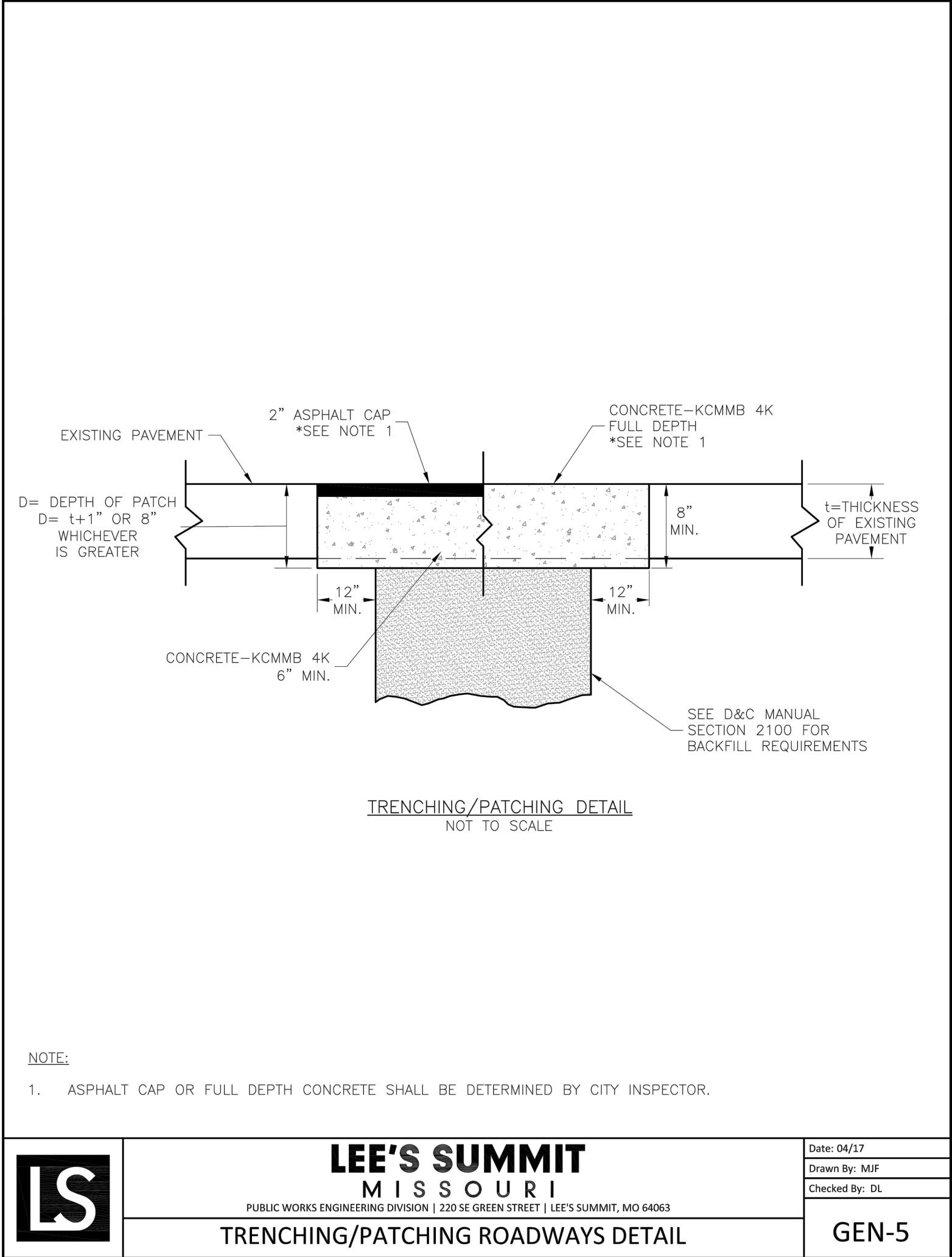
Drawings and/or Specifications are original proprietary work and property of the Engineer and intended specifically for this project. Use of items contained herein without consent of the Engineer is prohibited. Drawings illustrate best information available to the Engineer. Field verification of actual elements, conditions, and dimensions is required.



Revisions

LOTS 11 & 12
STREETS OF WEST PRYOR
LEES SUMMIT, MISSOURI





Revisions

LOTS 11 & 12
STREETS OF WEST PRYOR
LEE'S SUMMIT, MISSOURI