

HIGHLAND MEADOWS - 5TH PLAT

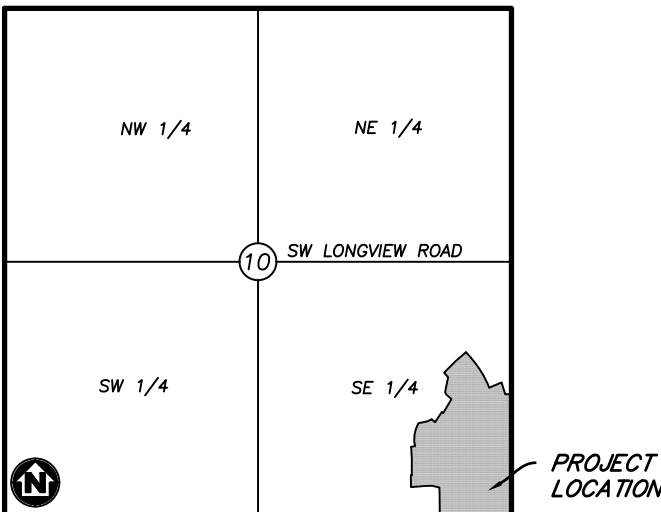
WATER MAIN EXTENSION PLANS

LEE'S SUMMIT, JACKSON COUNTY, MISSOURI

SEC. 10, TWP. 47N, RNG. 32W

DATE: 1/15/2021

LOTS: 134-159 (26 TOTAL)



VICINITY MAP

SECTION 10, TOWNSHIP 47, RANGE 32
LEE'S SUMMIT, JACKSON COUNTY, MISSOURI
NOT TO SCALE

LEGAL DESCRIPTION:

THE EAST HALF OF THE SOUTHEAST QUARTER OF
SECTION 10, TOWNSHIP 47 NORTH, RANGE 32 WEST,
EXCEPT THOSE PARTS PLATTED AS HIGHLAND
MEADOWS FIRST PLAT, HIGHLAND MEADOWS SECOND
PLAT, HIGHLAND MEADOWS THIRD PLAT,
HIGHLAND MEADOWS 4TH PLAT, SUBDIVISIONS IN
LEE'S SUMMIT, JACKSON COUNTY, MISSOURI.



Know what's below.
Call before you dig.



UTILITY CONTACTS:

SANITARY & WATER:
CITY OF LEE'S SUMMIT
JEFF THORN
220 SE GREEN STREET
LEE'S SUMMIT, MO 64063
PHONE (816) 969-1900

STORMWATER:
CITY OF LEE'S SUMMIT
PUBLIC WORKS
220 SE GREEN STREET
LEE'S SUMMIT, MO 64063
PHONE (816) 969-1800

STREETS:
CITY OF LEE'S SUMMIT
MICHAEL PARK
220 SE GREEN STREET
LEE'S SUMMIT, MO 64063
PHONE (816) 969-1900

AT&T:
RONALD GIFFERT
500 E 8TH STREET
KANSAS CITY, MO 64106
PHONE (816) 275-1550

EVERGY:
DOUG DAVIN
1300 SE HAMBLIN ROAD
LEE'S SUMMIT, MO 64081
PHONE (816) 347-4320

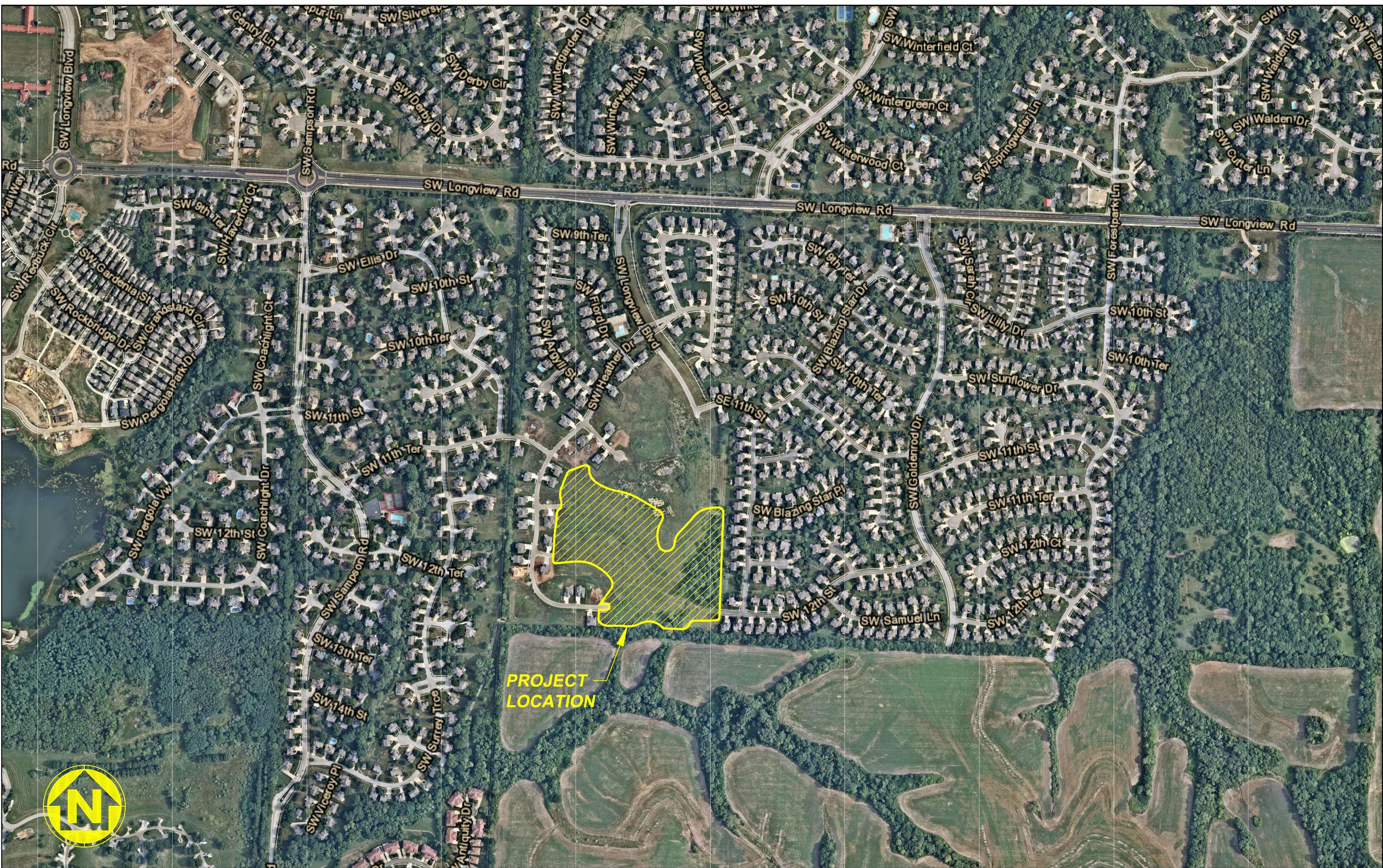
MISSOURI GAS ENERGY:
RICHARD FROCK
3025 SW CLOVER DRIVE
LEE'S SUMMIT, MO 64082
PHONE (816) 472-3489

FEMA FLOOD INFORMATION:

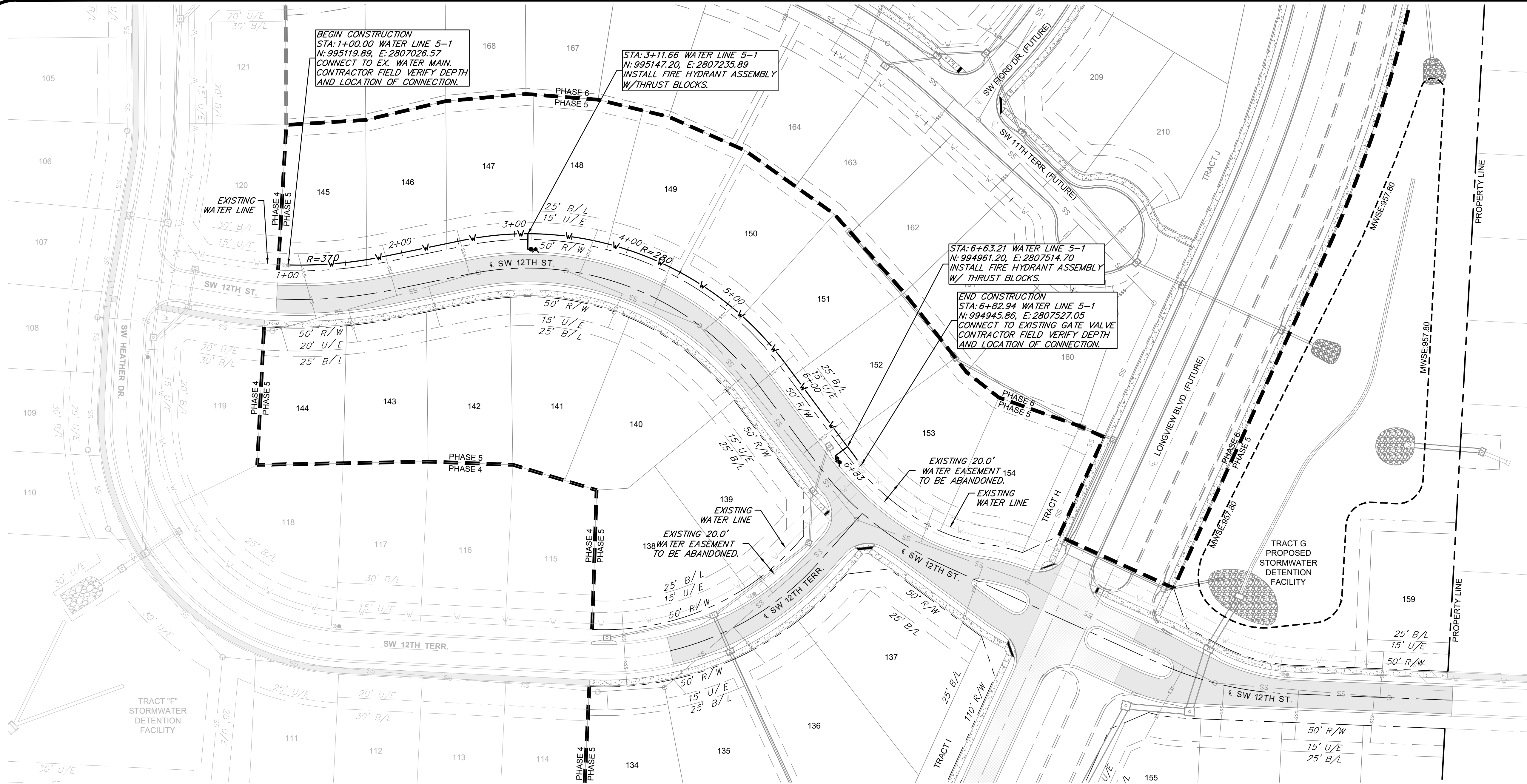
THE SITE IS LOCATED IN ZONE X, AREA OF MINIMAL
FLOOD HAZARD, PER FEMA FIRM MAP 29095C0418G.
EFFECTIVE DATE OF JANUARY 20, 2017. NO LETTERS
OF MAP AMENDMENT OR REVISIONS ARE BEING
PROPOSED.

BENCHMARK:

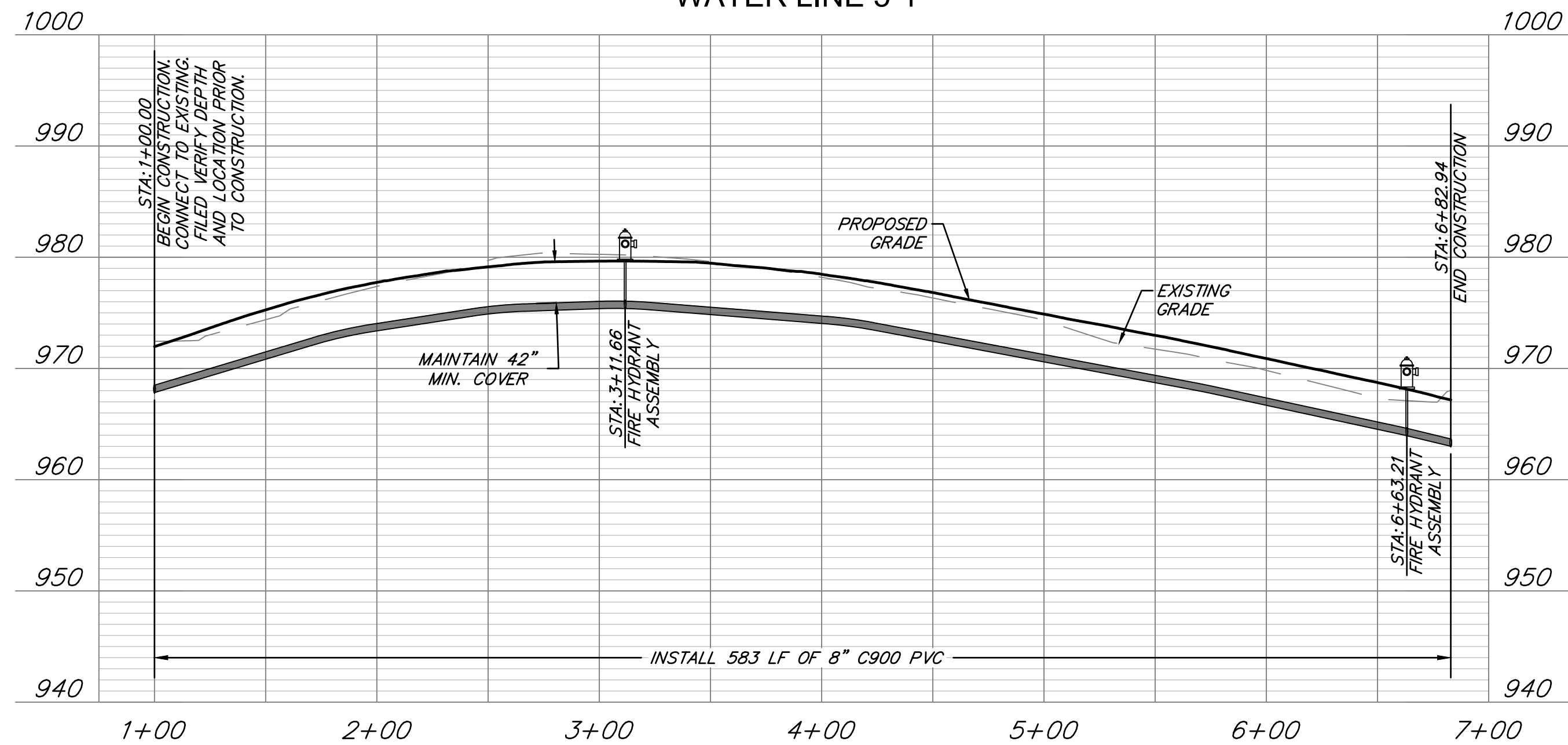
BM #1 N=999843.9665 E=2898946.9717 ELEV=935.04
DESCRIPTION = "JA-148" REFERENCE SYSTEM MONUMENT



Jan 15, 2021 - 2:17pm Plotted By: gscite G:\Shared drives\KCTO - Land Development\Projects\2020\20K10057 Highland Meadows - 5th Plat\01 CIVIL\03-DWG\Base\20K10057 - BASE - PROP - WATER.dwg Layout: WATER LINE PLAN & PROFILE



WATER LINE 5-1



WATER MAIN NOTES:

1. WATER MAINS AND SANITARY SEWERS SHALL HAVE AT LEAST 10' OF HORIZONTAL SEPARATION.
2. PROVIDE A MINIMUM OF 42" (3.5') OF COVER AND A MAXIMUM OF 84" (7') OF COVER OVER WATER MAIN.
3. CONTROLLED FILL: PRIOR TO INSTALLATION OF WATER PIPING IN FILL AREAS, FILL SHALL BE PLACED AND COMPACTED TO A MINIMUM 95% OF STANDARD PROCTOR DENSITY PER ASTM D 698 TO A MINIMUM DEPTH OF 6" ABOVE THE TOP OF PIPE.
4. CONCRETE THRUST BLOCKS SHALL BE INSTALLED AT ALL HORIZONTAL AND VERTICAL FITTING LOCATIONS IN ACCORDANCE WITH CITY OF LEE'S SUMMIT STANDARD DETAIL WAT-1 AND/OR WAT-2.
5. PROVIDE FITTINGS AND VALVES AS NECESSARY TO REMOVE AND RELOCATE FIRE HYDRANTS IF HYDRANTS ARE REUSED ON PROJECT.

LEGEND

- PROP. STREET &
- PROP. RIGHT-OF-WAY
- PROP. UTILITY EASEMENT
- PROP. BUILDING SETBACK
- PROP. LOT LINE
- PROP. WATER LINE
- PROP. SSWR
- PROP. SSWR SERVICE
- PROP. STREET PAVEMENT
- PROP. LONGVIEW BLVD.
- PROP. SIDEWALK
- EXISTING SIDEWALK

SUMMIT HOMES KC
HIGHLAND MEADOWS - 5TH PLAT

WATER LINE PLAN & PROFILE



SHEET NUMBER
C101
2 OF 3

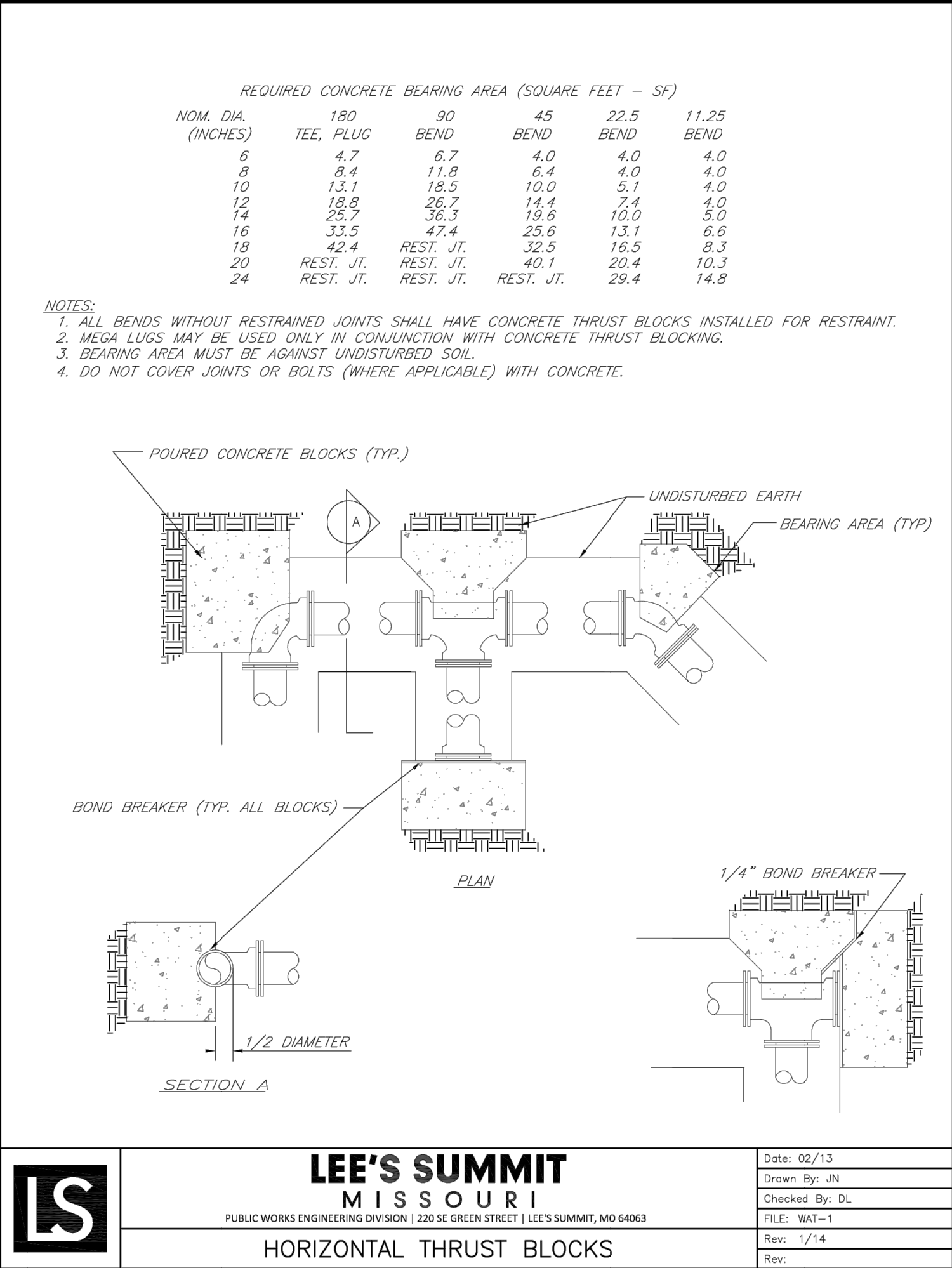
S10, T47N, R32W
LEE'S SUMMIT, JACKSON COUNTY, MISSOURI

REVISIONS		DRAWING INFO.	
NO.	DESCRIPTION	BY	DATE
1.	REVISED PER CITY COMMENT	GC	1/15/21
		CHECK BY:	ZM
		LICENSE NO.	PE-2012009232
		DATE:	12/2/2020
		ISSUED FOR:	FOR REVIEW
		JOB NUMBER:	20K10057
		MO COA NO.	00062

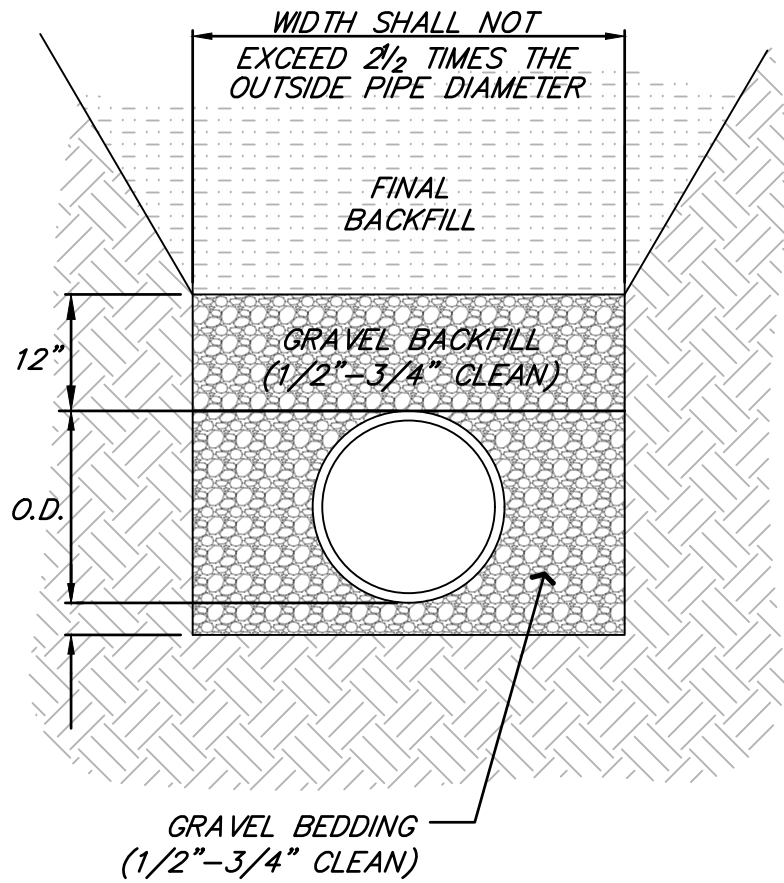
ANDERSON
ENGINEERING
EMPLOYEE OWNED

ENGINEERS • SURVEYORS • LABORATORIES • DRILLING
811 E. THIRD STREET • JOPLIN, MISSOURI 64801 • PHONE (417) 782-7399
A LICENSED MISSOURI ENGINEERING & SURVEYING CORPORATION - LC 62

Jan 15, 2021 - 2:18pm Plotted By: gacite G:\Shared drives\VC10 - Land Development\Projects\2020\20KCI0057 Highland Meadows - 5th Plat\01 CIVIL\03-DWG\Sheet\WATER MAIN\20KCI0057 - SHT - DETAILS.dwg Layout: WATER LINE DETAILS

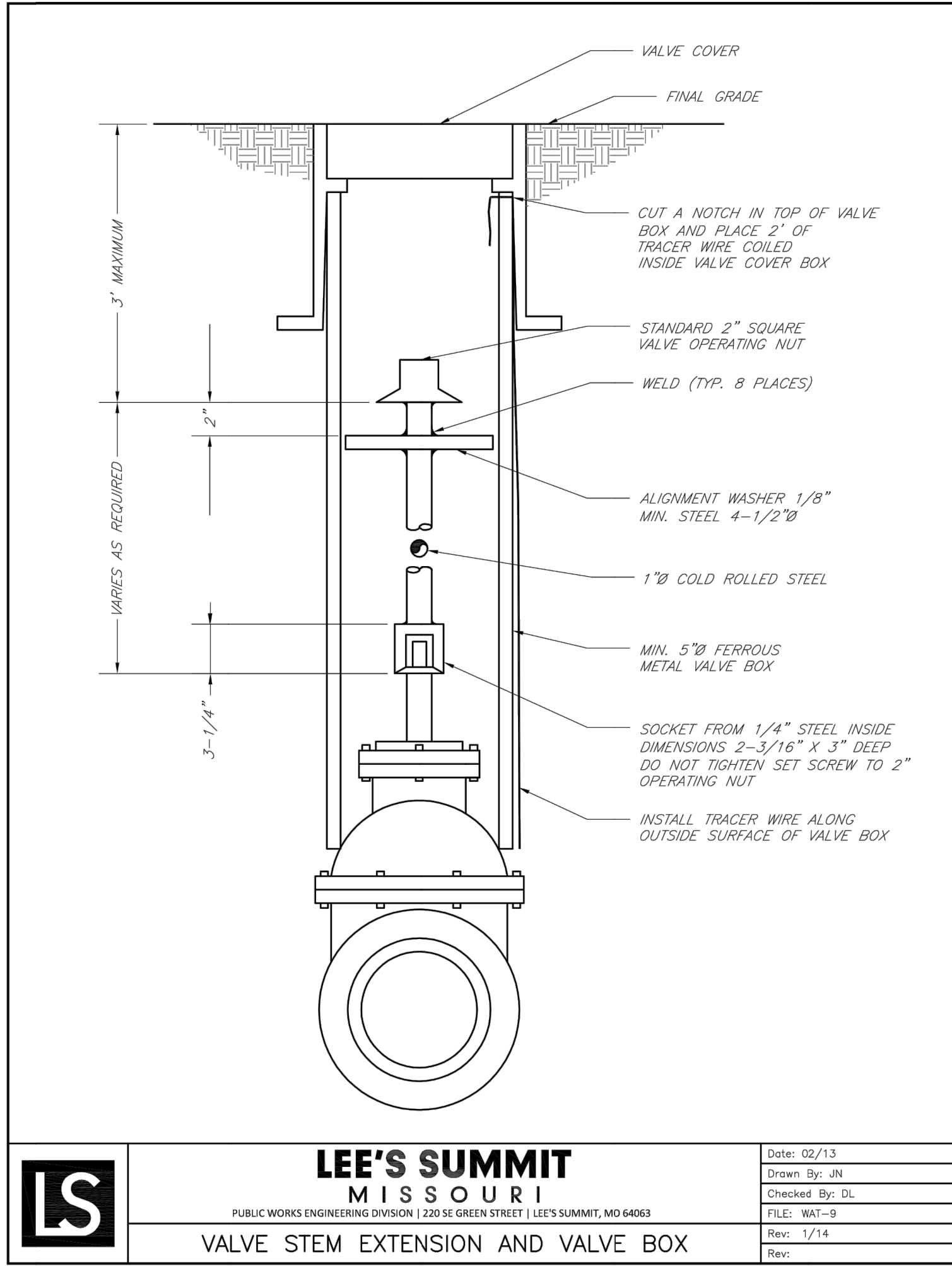
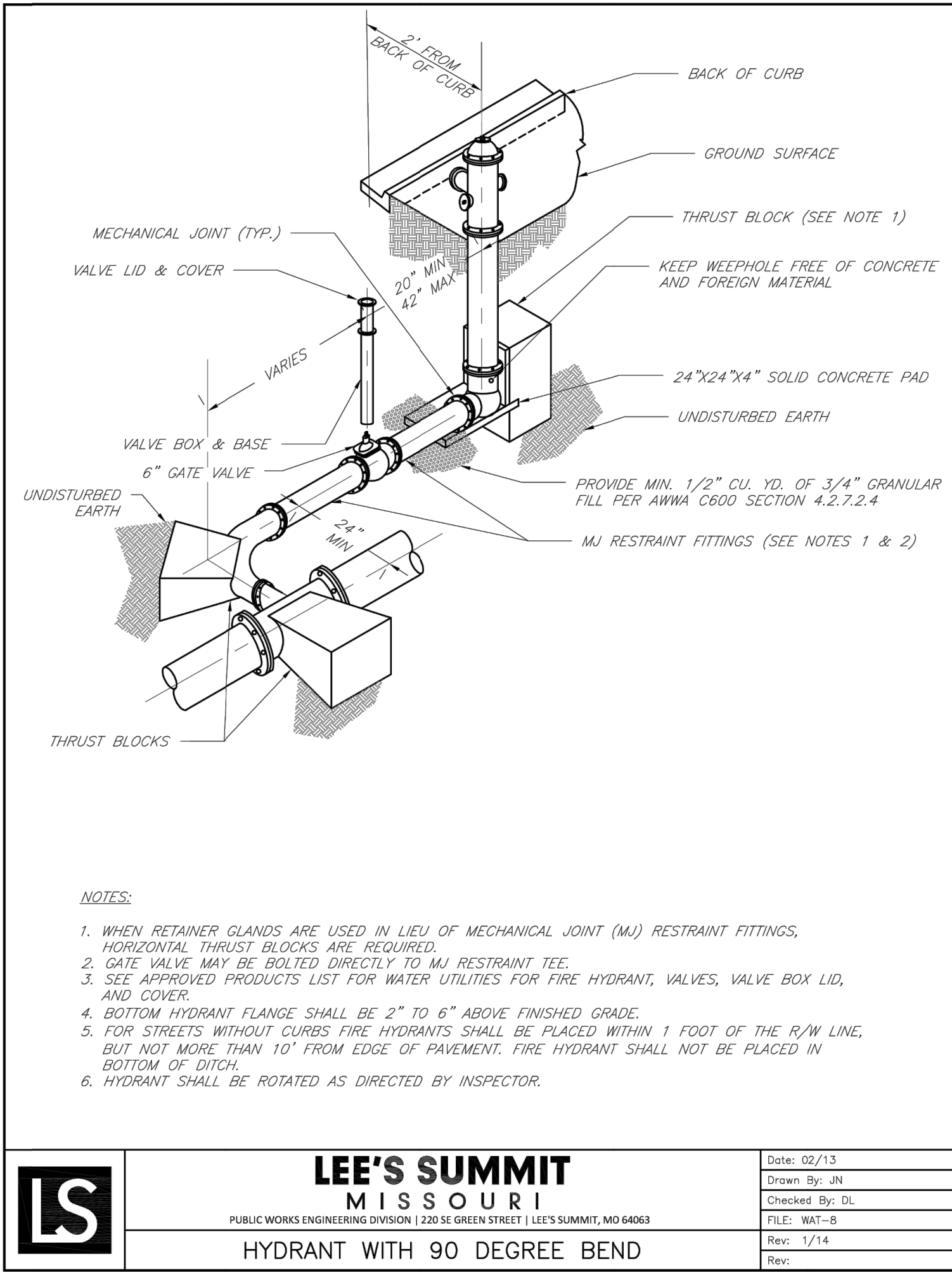
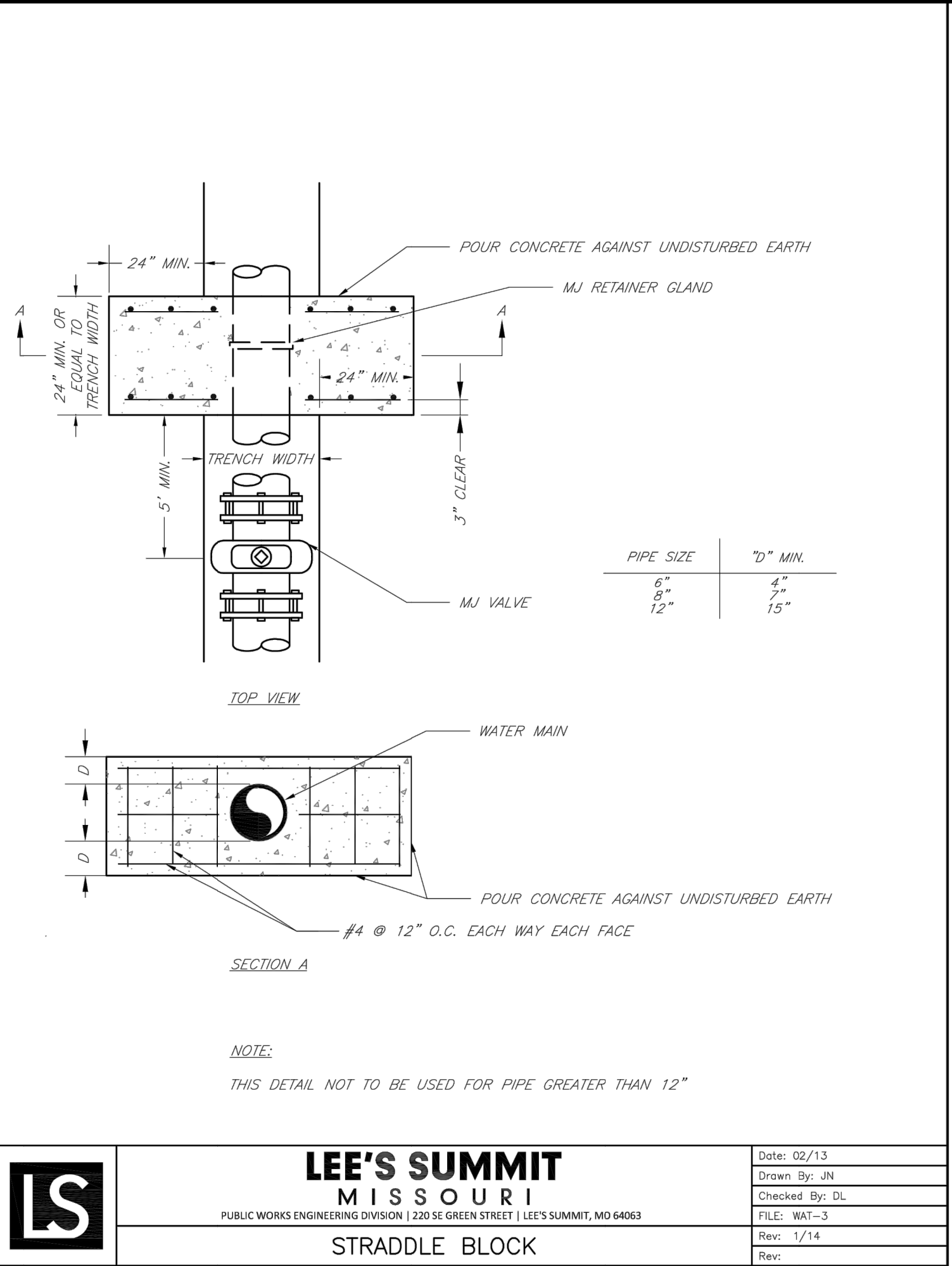


BEDDING
1/2"-3/4" CLEAN AGGREGATE, HAND TAMPED OR MECHANICALLY COMPACTED IN MAX. 4" LIFTS
INITIAL BACKFILL
-UNDER PAVED AREAS OR WITHIN 4' HORIZONTAL OF PAVED AREAS
1/2"-3/4" CLEAN AGGREGATE, HAND TAMPED OR MECHANICALLY COMPACTED IN MAX. 4" LIFTS
-UNDER OPEN AREAS
1/2"-3/4" CLEAN AGGREGATE, HAND TAMPED OR MECHANICALLY COMPACTED IN MAX. 4" LIFTS
FINAL BACKFILL
-UNDER PAVED AREAS OR WITHIN 4' HORIZONTAL OF PAVED AREAS
ON-SITE OR IMPORTED MATERIAL FREE OF MUCK, FROZEN MATERIAL, EXCESS MOISTURE, ORGANICS, TOPSOIL, RUBBISH, CONSTRUCTION DEBRIS, ROCK OR BRICK LARGER THAN 8", COMPACTED TO 95% OF STANDARD DENSITY PER ASTM D-698
-UNDER OPEN AREAS
ON-SITE OR IMPORTED MATERIAL FREE OF MUCK, FROZEN MATERIAL, EXCESS MOISTURE, ORGANICS, TOPSOIL, RUBBISH, CONSTRUCTION DEBRIS, ROCK OR BRICK LARGER THAN 8", COMPACTED TO 90% OF STANDARD DENSITY PER ASTM D-698



BEDDING DEPTH BELOW PIPE		
PIPE DIAMETER	IN SOIL	IN ROCK
24" AND LESS	4"	6"
27" THRU 60"	4"	9"

PIPE BEDDING DETAIL
NOT TO SCALE



ANDERSON
ENGINEERING
EMPLOYEE OWNED

ENGINEERS • SURVEYORS • LABORATORIES • DRILLING
811 E. THIRD STREET • JOPLIN, MISSOURI 64801 • PHONE (417) 782-7399
A LICENSED MISSOURI ENGINEERING & SURVEYING CORPORATION - LC 62

REVISIONS		DRAWING INFO.	
		NO.	DESCRIPTION
		BY	DATE
		GC	1/15/21
		CHECK BY:	ZM
		LICENSE NO.	FE-2012009232
		DATE:	12/2/2020
		ISSUED FOR:	FOR REVIEW
		JOB NUMBER:	20KCI0057
		MO COA NO.	00062

SUMMIT HOMES KC
HIGHLAND MEADOWS - 5TH PLAT

WATER LINE DETAILS

S10, T47N, R22W
LEE'S SUMMIT, JACKSON COUNTY, MISSOURI

STATE OF MISSOURI
ZACH A. MYERS
NUMBER
FE-2012009232
1/15/21

SHEET NUMBER
C401
3 OF 3