

THE RIDGE AT WINTERSET SUMMIT  
LOTS 1601-1605  
SANITARY SEWER CONSTRUCTION PLANS  
Part of Section 2 & 3, Township 47 North, Range 32 West  
Lee's Summit, Jackson County, Missouri

CONSTRUCTION AND DESIGN NOTES:

SANITARY SEWERS:

- SANITARY SEWER PIPE SHALL BE POLY VINYL CHLORIDE (PVC), SDR-26, UNLESS NOTED OTHERWISE IN THESE PLANS.
- HOUSE SEWER LATERALS SHALL BE 4 INCH PVC, SDR-26. LATERALS SHALL BE CONSTRUCTED USING A TOP ORIENTED "WYE" AT THE SEWER STATION SHOWN IN THESE PLANS. LATERALS SHALL BE LAID AT A GRADE OF 2.0% FROM THE SEWER MAIN TO THE STREET RIGHT-OF-WAY LINE OR EASEMENT LINE AS REPRESENTED BY THE LATERAL LENGTH SHOWN IN THESE PLANS. THE ELEVATION SHOWN FOR THE END OF THE LATERAL IN THESE PLANS IS APPROXIMATE. THE ACTUAL ELEVATION SHALL BE DETERMINED BY THE FLOW LINE ELEVATION OF THE SEWER MAIN, THE FITTINGS AND GRADE OF THE SEWER LATERAL.
- THE CONTRACTOR SHALL MAINTAIN A LOG OF THE "AS BUILT" STATION AND LENGTH OF EACH HOUSE LATERAL AND SHALL PROVIDE ENGINEERING SOLUTIONS, L.L.C. WITH A COPY OF SAID LOG UPON COMPLETION OF SEWER CONSTRUCTION.
- A STAKE SHALL BE PLACED AT THE END OF EACH WYE CONNECTION WITH THE END ELEVATION WRITTEN ON THE STAKE
- FILL AREAS SHALL HAVE 18" OF COMPACTED FILL IN PLACE PRIOR TO TRENCHING
- A TRENCH CHECK CONSISTING OF FLOWABLE FILL MUST BE INSTALLED ON EVERY PRIVATE LATERAL.



GENERAL NOTE:

- ALL CONSTRUCTION SHALL CONFORM TO THE CITY OF LEE'S SUMMIT DESIGN AND CONSTRUCTION MANUAL AS ADOPTED BY ORDINANCE 5813.
- TRENCH CHECKS SHALL BE INSTALL AT ALL SANITARY WYES LOCATION.

OIL - GAS WELLS

ACCORDING TO EDWARD ALTON MAY JR'S ENVIRONMENTAL IMPACT STUDY OF ABANDONED OIL AND GAS WELLS IN LEE'S SUMMIT, MISSOURI IN 1995, THERE ARE NOT OIL AND GAS WELLS WITHIN 185 FEET OF THE PROPERTY AS SURVEYED HEREON.

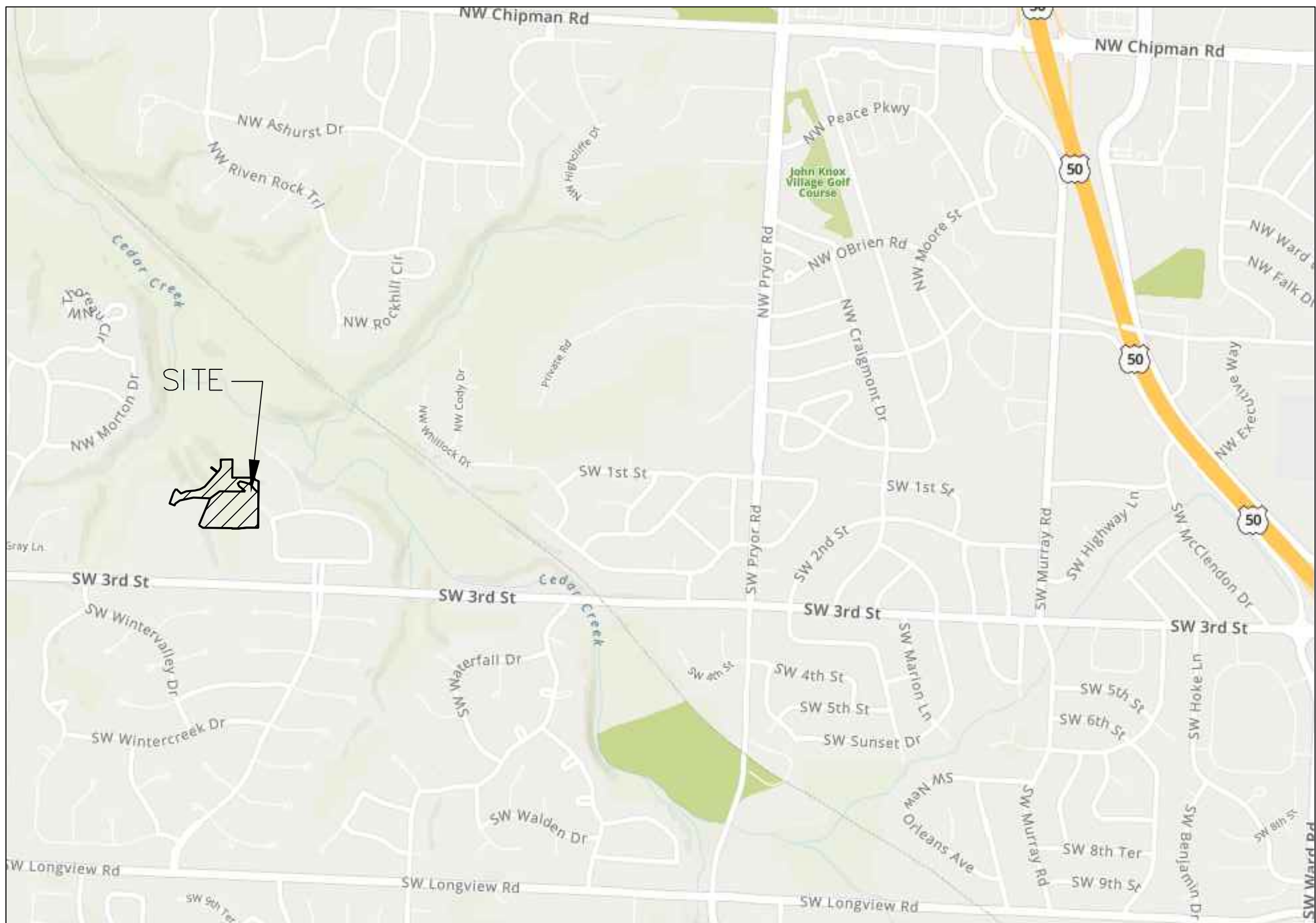
FLOOD INFORMATION:

The property is located in Zone "X" areas outside the 100 year flood plain per FEMA Map 29095C0416G, dated January 20, 2017

UTILITY COMPANIES:

THE FOLLOWING LIST OF UTILITY COMPANIES IS PROVIDED FOR INFORMATION ONLY. WE DO NOT OFFER ANY GUARANTEE OR WARRANTY THAT THIS LIST IS COMPLETE OR ACCURATE. THE CONTRACTOR SHALL BE RESPONSIBLE FOR CONTACTING ALL UTILITY COMPANIES THAT MAY BE AFFECTED BY THE PROPOSED CONSTRUCTION AND VERIFYING THE ACTUAL LOCATION OF EACH UTILITY LINE. THE CONTRACTOR SHALL NOTIFY ENGINEERING SOLUTIONS AT 816.623.9888 OF ANY CONFLICT WITH PROPOSED IMPROVEMENTS.

EVERGY ~ 298-1196  
MISSOURI GAS ENERGY ~ 756-5261  
SOUTHWESTERN BELL TELEPHONE ~ 761-5011  
COMCAST CABLE ~ 795-1100  
WILLIAMS PIPELINE ~ 422-6300  
CITY OF LEE'S SUMMIT PUBLIC WORKS ~ 969-1800  
CITY OF LEE'S SUMMIT DEVELOPMENT ENGINEERING INSPECTION AT 816.969.1200  
CITY OF LEE'S SUMMIT WATER UTILITIES ~ 969-1900  
MISSOURI ONE CALL (DIG RITE) ~ 1-800-344-7483



SITE LOCATION MAP

INDEX OF SHEETS:

- C.400 ~ SANITARY SEWER COVER SHEET
- C.401 ~ SANITARY SEWER GENERAL LAYOUT
- C.402 ~ SANITARY SEWER PLAN & PROFILE
- C.403 ~ SANITARY SEWER DETAILS

Summary of Quantities:

ITEM AND DESCRIPTION	UNIT	ESTIMATED QUANTITY
<b>SANITARY</b>		
4" PVC SDR 26 Service Line	LF	218.95
8" PVC SDR 26	LF	709.04
4' DIA Manhole	EA	6.00
PIPE ANCHORS	LS	4.00
TEES, BENDS, WYES	LS	5.00
CONNECTION TO EXISTING SANITARY SEWER	LS	1.00
TRACER WIRE AND EQUIPMENT	L.F.	709.04

LEGEND:

- B/L - BUILDING SET-BACK
- C/A - COMMON AREA
- D/E - DRAINAGE EASEMENT
- FND. - FOUND
- L/E - LANDSCAPE EASEMENT
- L.N.A. - LIMITS OF NO ACCESS
- R/W - RIGHT OF WAY
- SAN - SANITARY SEWER LINE
- S/W - SIDEWALK
- U/E - UTILITY EASEMENT
- W - WATER LINE
- ST - STORM SEWER LINE

ENGINEER'S CERTIFICATION:

I HEREBY CERTIFY THAT THIS PROJECT HAS BEEN DESIGNED AND THESE PLANS PREPARED IN ACCORDANCE WITH THE CURRENT DESIGN CRITERIA OF THE CITY OF LEE'S SUMMIT, MISSOURI AND THE STATE OF MISSOURI. I FURTHER CERTIFY THAT THESE PLANS WERE DESIGNED IN ACCORDANCE TO AASHTO STANDARDS.

CITY OF LEE'S SUMMIT, MISSOURI

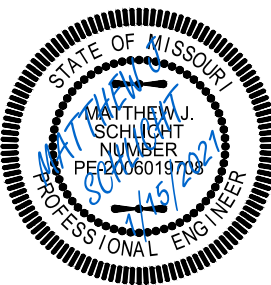
APPROVED: DATE: \_\_\_\_\_

BY: \_\_\_\_\_  
CITY ENGINEER

The Ridge at Winterset Summit  
Lee's Summit, Jackson County, Missouri

Project: Winterset Summit  
Creek: \_\_\_\_\_  
Issue Date: December 3, 2020

Cover Sheet  
Construction Plans for:  
The Ridge at Winterset Summit  
Lee's Summit, Jackson County, Missouri

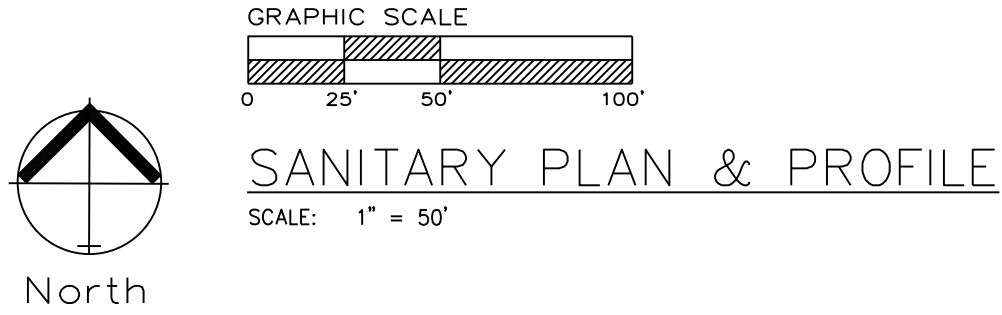
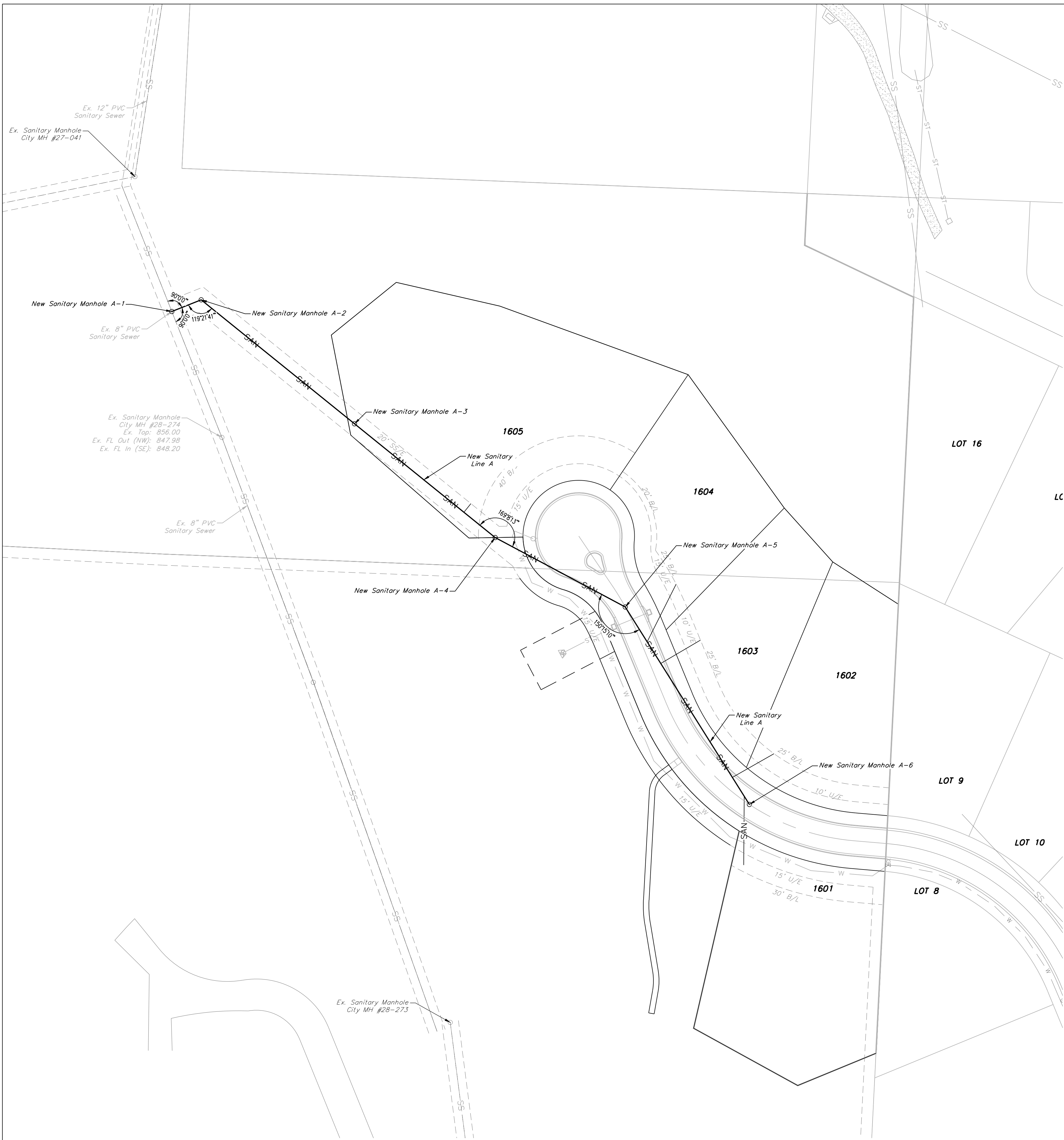


Matthew J. Schlicht  
MO PE 2006019708  
KS PE 19071  
OK PE 25526

REVISIONS

REV. 1/15/2021





**GENERAL NOTE:**  
1 ~ ALL CONSTRUCTION SHALL CONFORM TO THE CITY OF LEE'S SUMMIT DESIGN AND CONSTRUCTION MANUAL AS ADOPTED BY ORDINANCE 5813.  
2 ~ TRENCH CHECKS SHALL BE INSTALL AT ALL SANITARY WYES LOCATION.

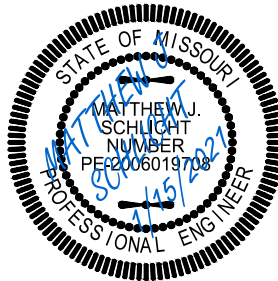


Professional Registration  
Missouri  
Engineering 2005002188-D  
Surveying 2005005119-D  
Kansas  
Engineering E-1695  
Surveying LS-218  
Oklahoma  
Engineering 6254  
Nebraska  
Engineering CA2821

The Ridge at Winterset Summit  
Lee's Summit, Jackson County, Missouri

Project:  
Creek:  
Issue Date:  
December 3, 2020

Sanitary Sewer General Layout  
Construction Plans for:  
The Ridge at Winterset Summit  
Lee's Summit, Jackson County, Missouri

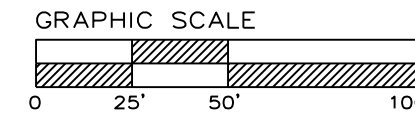
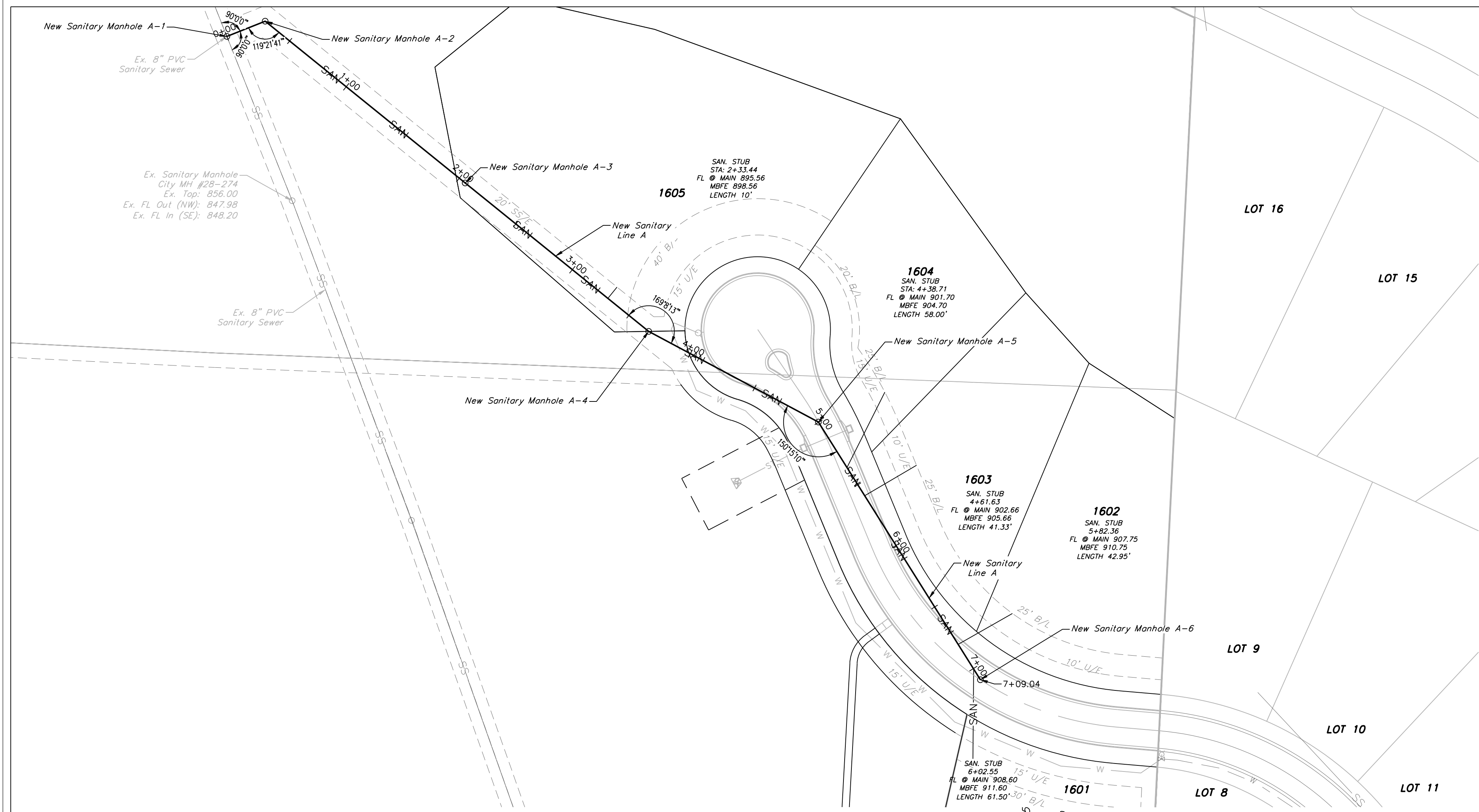


Matthew J. Schlicht  
MO PE 2006019708  
KS PE 19071  
OK PE 25526

REVISIONS  
REV. 1/15/2021

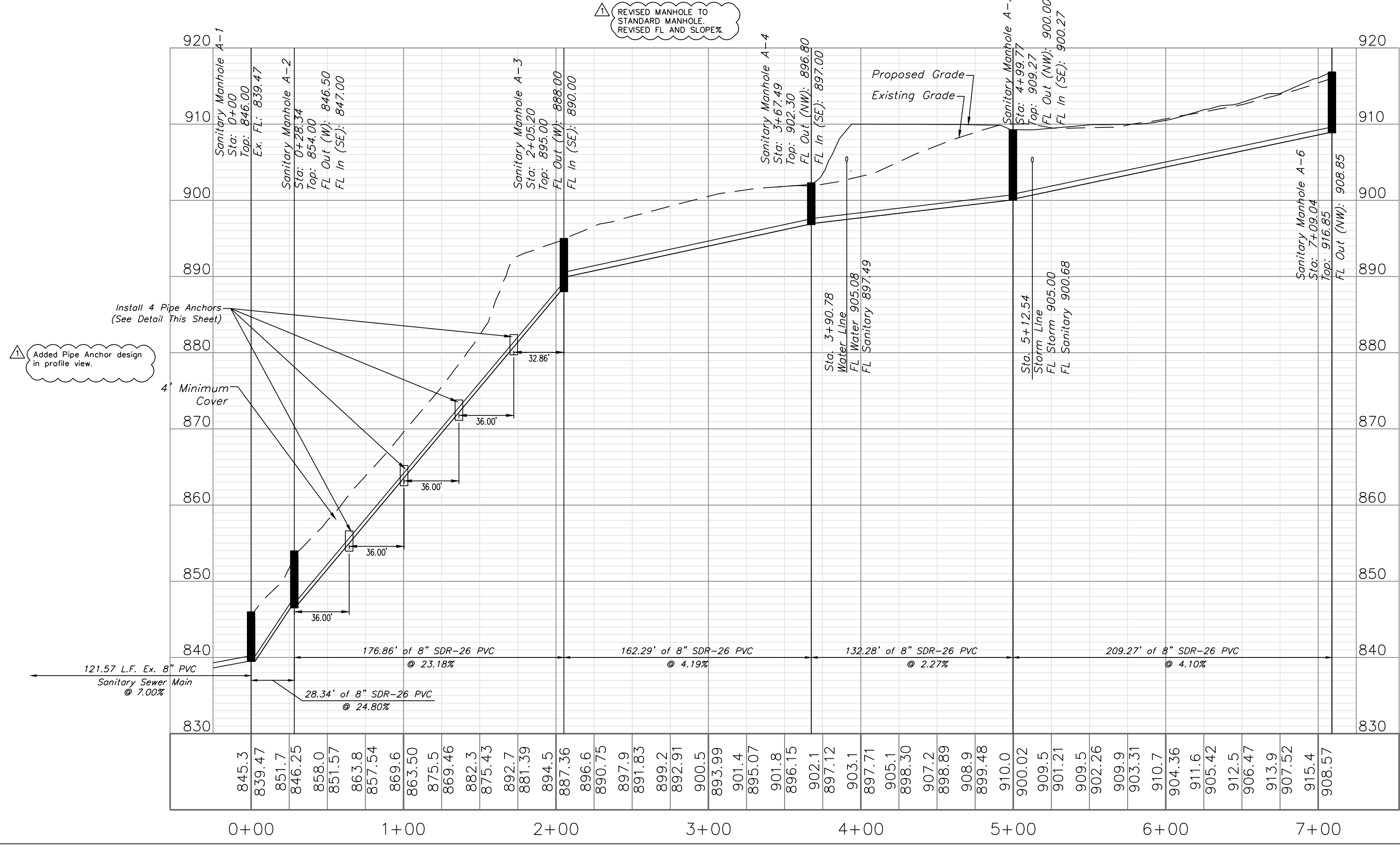
\_\_\_\_\_  
\_\_\_\_\_  
\_\_\_\_\_  
\_\_\_\_\_  
\_\_\_\_\_





**SANITARY PLAN & PROFILE**  
SCALE: 1" = 50'

**GENERAL NOTE:**  
1 - ALL CONSTRUCTION SHALL CONFORM TO THE CITY OF LEE'S SUMMIT DESIGN AND CONSTRUCTION MANUAL AS ADOPTED BY ORDINANCE 5813.  
2 - TRENCH CHECKS SHALL BE INSTALL AT ALL SANITARY WYES LOCATION.



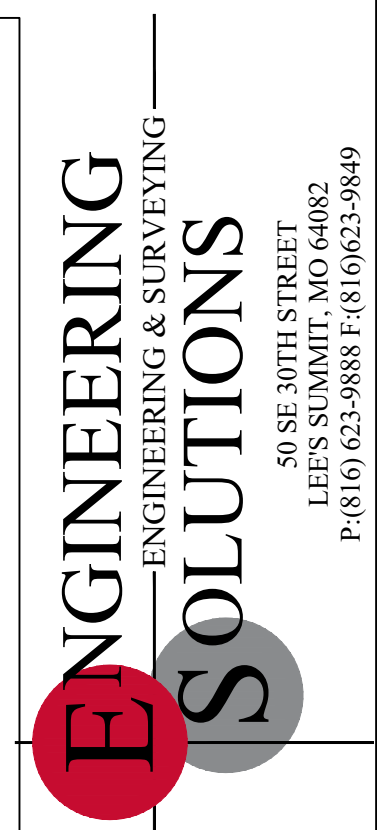
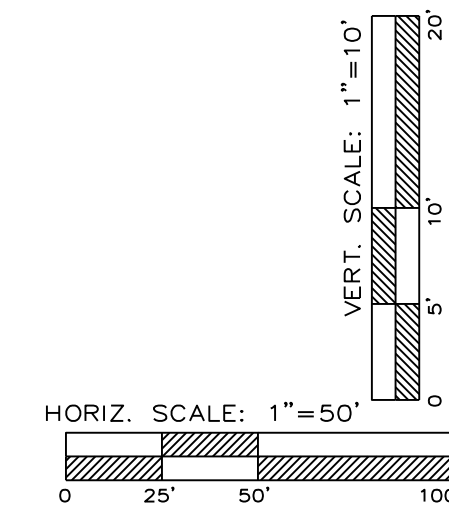
**NOTE:**

**Pipe Anchors**

a. A minimum number of pipe anchors shall be provided in accordance with the following table. Conditions may require additional anchors as determined by the Design Engineer.

Percent of Grade	Center to Center Max. Spacing (ft)
20 ≤ Slope < 35	36
35 ≤ Slope < 50	24
50 ≤ Slope	16

b. The pipe anchor shall extend not less than 1 foot into undisturbed earth on the sides and bottom and 1 foot above top of pipe. In incompressible material, the above dimensions may be 6 inches each side and bottom. The anchor shall support a joint fitting.

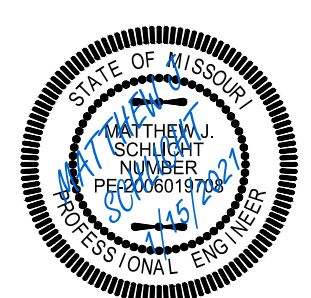


Professional Registration  
Missouri  
Engineering 2005002188-D  
Surveying 2005005189-D  
Kansas  
Engineering E-1695  
Surveying LS-218  
Oklahoma  
Engineering 6254  
Nebraska  
Engineering CA2821

The Ridge at Winterset Summit  
Lee's Summit, Jackson County, Missouri

Project: Lee's Summit  
Creek  
Issue Date:  
December 3, 2020

Sanitary Plan and Profile  
Construction Plans for:  
The Ridge at Winterset Summit  
Lee's Summit, Jackson County, Missouri



Matthew J. Schlicht  
MO PE 2006019708  
KS PE 19071  
OK PE 25526

REVISIONS  
REV. 1/15/2021



