

HIGHLAND MEADOWS - 5TH PLAT

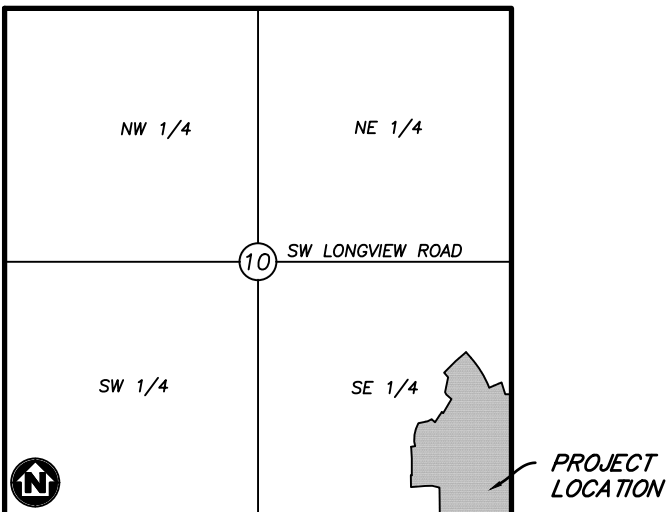
WATER MAIN EXTENSION PLANS

LEE'S SUMMIT, JACKSON COUNTY, MISSOURI

SEC. 10, TWP. 47N, RNG. 32W

DATE: 12/2/2020

LOTS: 134-159 (26 TOTAL)



VICINITY MAP

SECTION 10, TOWNSHIP 47, RANGE 32
LEE'S SUMMIT, JACKSON COUNTY, MISSOURI
NOT TO SCALE

LEGAL DESCRIPTION:

THE EAST HALF OF THE SOUTHEAST QUARTER OF SECTION 10, TOWNSHIP 47 NORTH, RANGE 32 WEST, EXCEPT THOSE PARTS PLATTED AS HIGHLAND MEADOWS FIRST PLAT, HIGHLAND MEADOWS SECOND PLAT, HIGHLAND MEADOWS THIRD PLAT, HIGHLAND MEADOWS 4TH PLAT, SUBDIVISIONS IN LEE'S SUMMIT, JACKSON COUNTY, MISSOURI.



Know what's below.
Call before you dig.



UTILITY CONTACTS:

SANITARY & WATER:
CITY OF LEE'S SUMMIT
JEFF THORN
220 SE GREEN STREET
LEE'S SUMMIT, MO 64063
PHONE (816) 969-1900

STORMWATER:
CITY OF LEE'S SUMMIT
GENE WILLIAMS
220 SE GREEN STREET
LEE'S SUMMIT, MO 64063
PHONE (816) 969-1900

STREETS:

CITY OF LEE'S SUMMIT
MICHAEL PARK
220 SE GREEN STREET
LEE'S SUMMIT, MO 64063
PHONE (816) 969-1900

AT&T:

RONALD GIFFERT
500 E 8TH STREET
KANSAS CITY, MO 64106
PHONE (816) 275-1550

KCP&L:

DOUG DAVIN
1300 SE HAMBLIN ROAD
LEE'S SUMMIT, MO 64081
PHONE (816) 347-4320

MISSOURI GAS ENERGY:

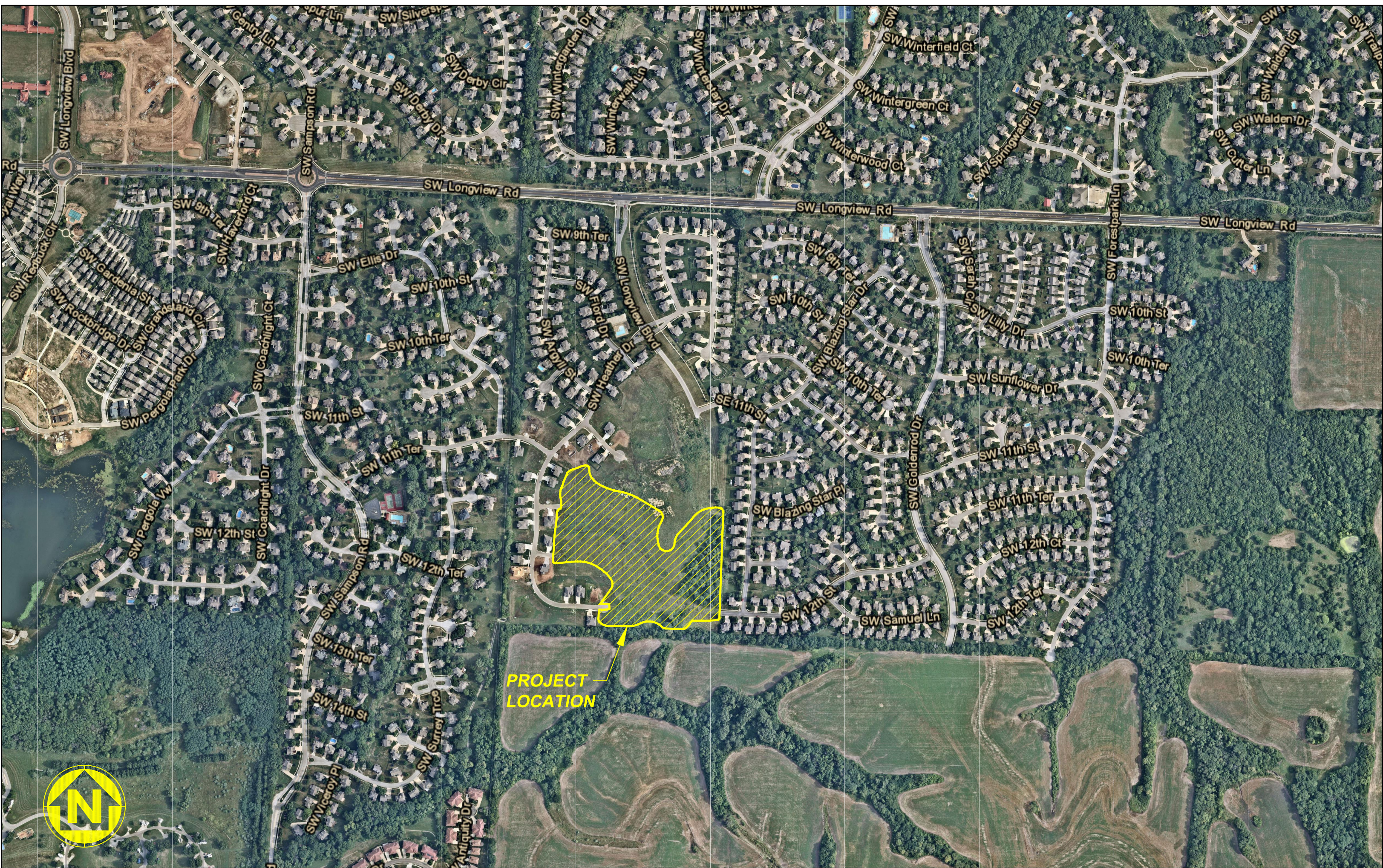
RICHARD FROCK
3025 SW CLOVER DRIVE
LEE'S SUMMIT, MO 64082
PHONE (816) 472-3489

FEMA FLOOD INFORMATION:

THE SITE IS LOCATED IN ZONE X, AREA OF MINIMAL FLOOD HAZARD, PER FEMA FIRM MAP 29095C0418G: EFFECTIVE DATE OF JANUARY 20, 2017. NO LETTERS OF MAP AMENDMENT OR REVISIONS ARE BEING PROPOSED.

BENCHMARK:

BM #1 N=999843.9665 E=2898946.9717 ELEV=935.04
DESCRIPTION = "JA-148" REFERENCE SYSTEM MONUMENT



WATERSHED: LITTLE BLUE RIVER

DISTURBED AREA: 14.8 AC

SURVEY CONTROL:

COORDINATES ARE BASED ON THE MISSOURI STATE PLANE COORDINATE SYSTEM, WEST ZONE, USING JACKSON COUNTY, MISSOURI, GEOGRAPHIC REFERENCE SYSTEM MONUMENT JA-148 (2003 ADJUSTMENT) AND ARE MODIFIED FROM GRIS COORDINATES TO GROUND COORDINATES BY UTILIZING A GRID SCALE FACTOR OF 0.9999020 AT REFERENCE MONUMENT JA-148.

PROJECT ELEVATIONS ARE BASED ON JACKSON COUNTY, MISSOURI, GEOGRAPHIC REFERENCE SYSTEM MONUMENT JA-148 (2003 ADJUSTMENT).

"JA-148" - STANDARD KC METRO ALUMINUM GRS DISK SET IN CONCRETE FLUSH WITH THE GROUND AND STAMPED "JA-148, 2002" LOCATED ON THE NORTH SIDE OF 3RD STREET, 12.5 FEET NORTH OF A SIDEWALK AND 102.5 FEET WEST OF THE PARKING LOT EXIT OF CEDAR CREEK ELEMENTARY SCHOOL.

GENERAL NOTES:

- CONTRACTOR SHALL SATISFY THEMSELVES AS TO THE EXISTING CONDITIONS OF THE SITE AND HAVE ALL UTILITIES MARKED PRIOR TO COMMENCING CONSTRUCTION.
- CONTRACTOR SHALL POTHOLE ALL CONNECTION POINTS TO EXISTING UTILITIES AND POTENTIAL UTILITY CONFLICT LOCATIONS PRIOR TO ANY CONSTRUCTION ACTIVITIES. NOTIFY ENGINEER IMMEDIATELY IF CONFLICT OR DISCREPANCY EXISTS.
- CONTRACTOR SHALL PROTECT EXISTING STRUCTURES TO REMAIN FROM DAMAGE DURING DEMOLITION AND CONSTRUCTION. ANY DAMAGE SHALL BE REPAIRED/ REPLACED TO PRE-CONSTRUCTION CONDITION AT CONTRACTOR'S EXPENSE.

DEVELOPER:

VINCENT WALKER
SUMMIT HOMES KC
120 SE 30TH STREET
LEE'S SUMMIT, MO 64082
VINCENT@SUMMITHOMESKC.COM
(816) 246-6700

CIVIL ENGINEER:

ZACH MYERS
ANDERSON ENGINEERING, INC.
941 W 141ST TERR
KANSAS CITY, MO 64145
ZMYERS@ANDERSONENGINEERINGINC.COM
(816) 380-4821

PREPARED & SUBMITTED BY:
ANDERSON ENGINEERING INC.
KANSAS CITY, MISSOURI

ZACH MYERS, P.E.
MISSOURI P.E. NO. 2012009232

APPROVED BY:
CITY OF LEE'S SUMMIT, MISSOURI

AUTHORIZING POSITION

DATE

SHEET INDEX:

CVR - COVER SHEET
C101 - WATER LINE PLAN & PROFILE
C401 - WATER LINE DETAILS

PROJECT SPECIFICATIONS:

THE SPECIFICATIONS FOR THIS PROJECT SHALL BE THE FOLLOWING:

- MOST CURRENT VERSION OF THE DESIGN AND CONSTRUCTION MANUAL OF THE CITY OF LEE'S SUMMIT AS ADOPTED BY ORDINANCE 5813.

THE STANDARD SPECIFICATIONS THROUGH AND INCLUDING THE LATEST AMENDMENTS SHALL BE PART OF THESE PROJECT DRAWINGS AND SPECIFICATIONS AND ARE INCORPORATED HEREIN BY REFERENCE. THE MORE STRINGENT OF THESE STANDARD SPECIFICATIONS AND THOSE PREPARED BY THE ENGINEER PREPARING THESE PLANS SHALL GOVERN.



DRAWING INFO.		REVISIONS	
DRAWN BY:	GC	NO.	DESCRIPTION
CHECK BY:	ZM	BY	DATE
LICENSE NO.	FE-2012009232		
DATE:	12/2/2020		
ISSUED FOR:	FOR REVIEW		
JOB NUMBER:	20K010057		
MO COA NO.	00062		
© COPYRIGHT ANDERSON ENGINEERING, INC. 2020			

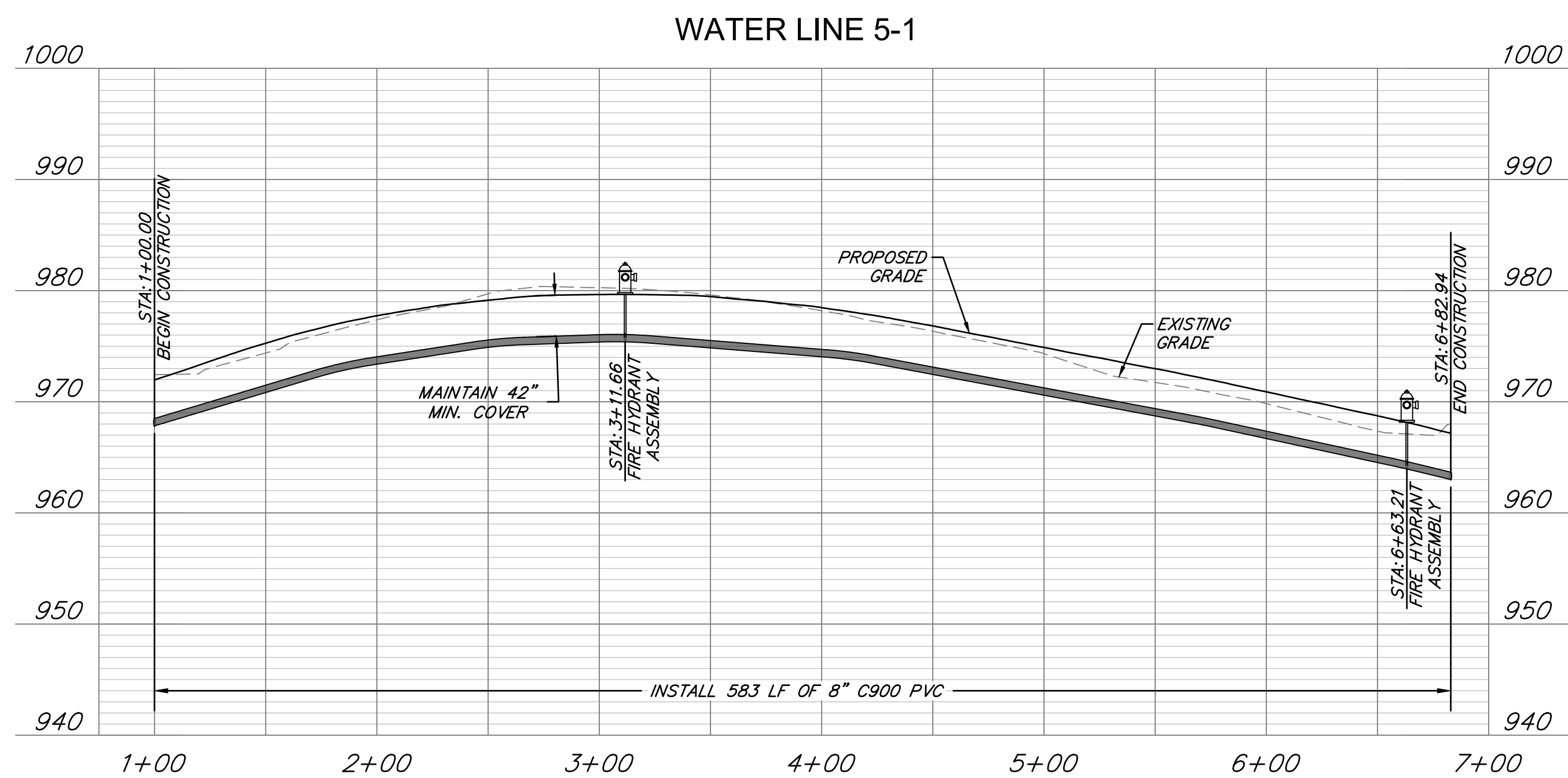
SUMMIT HOMES KC
HIGHLAND MEADOWS - 5TH PLAT

COVER SHEET

S10, T47N, R32W
LEE'S SUMMIT, JACKSON COUNTY, MISSOURI



SHEET NUMBER
CVR
1 OF 3



50 100

HORIZ.: 1"=50'

VERT.: 1"=10'

1. WATER MAINS AND SANITARY SEWERS SHALL HAVE AT LEAST 10' OF HORIZONTAL SEPARATION.
2. PROVIDE A MINIMUM OF 42" (3.5') OF COVER AND A MAXIMUM OF 84" (7') OF COVER OVER WATER MAIN.
3. CONTROLLED FILL: PRIOR TO INSTALLATION OF WATER PIPING IN FILL AREAS, FILL SHALL BE PLACED AND COMPACTED TO A MINIMUM 95% OF STANDARD PROCTOR DENSITY PER ASTM D 698 TO A MINIMUM DEPTH OF 6" ABOVE THE TOP OF PIPE.
4. CONCRETE THRUST BLOCKS SHALL BE INSTALLED AT ALL HORIZONTAL AND VERTICAL FITTING LOCATIONS IN ACCORDANCE WITH CITY OF LEE'S SUMMIT STANDARD DETAIL WAT-1 AND/OR WAT-2.
5. PROVIDE FITTINGS AND VALVES AS NECESSARY TO REMOVE AND RELOCATE FIRE HYDRANTS IF HYDRANTS ARE REUSED ON PROJECT.

SUMMIT HOMES KC
HIGHLAND MEADOWS - 5TH PLAT

WATER LINE PLAN & PROFILE



SHEET NUMBER
C101
2 OF 3

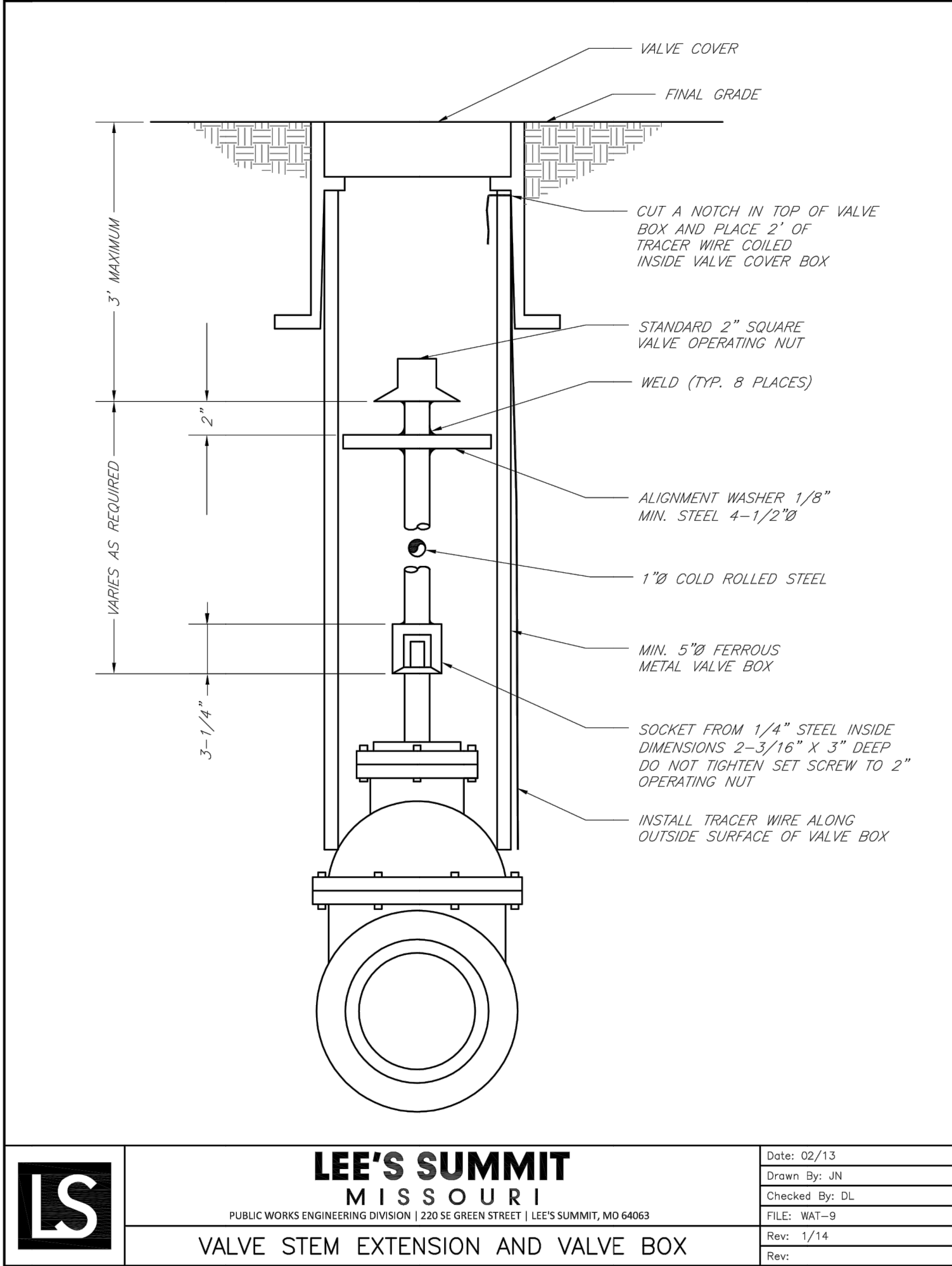
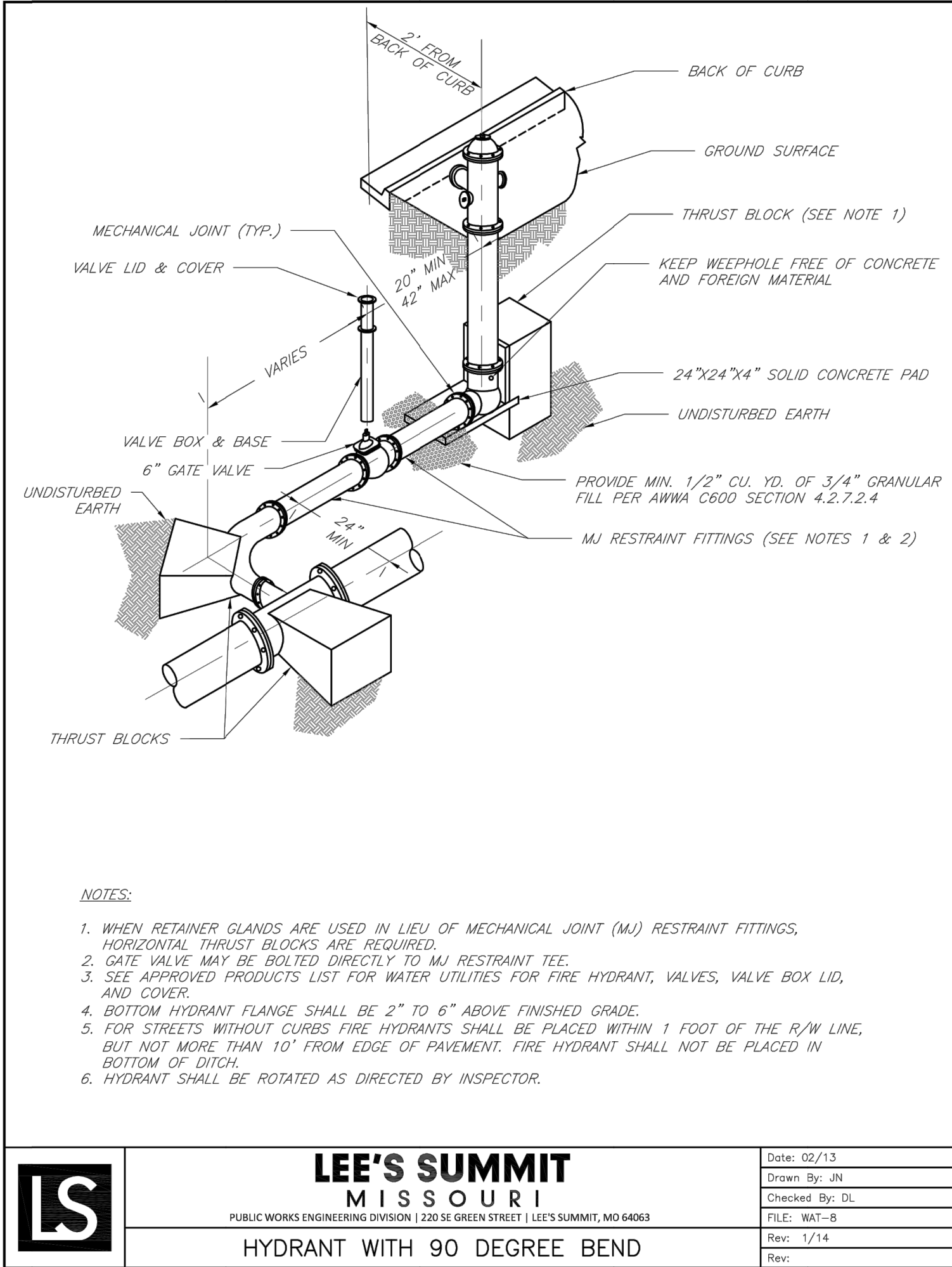
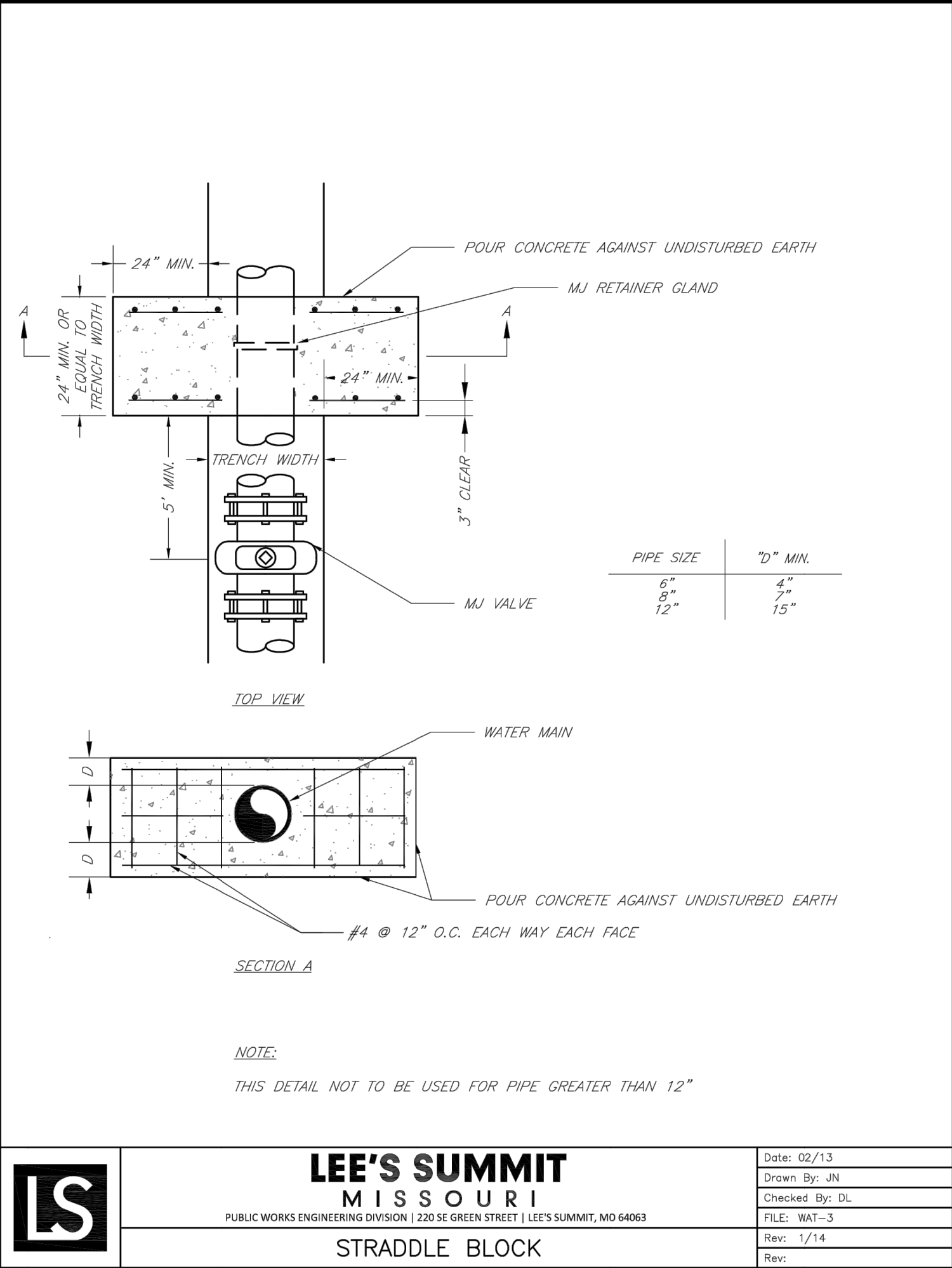
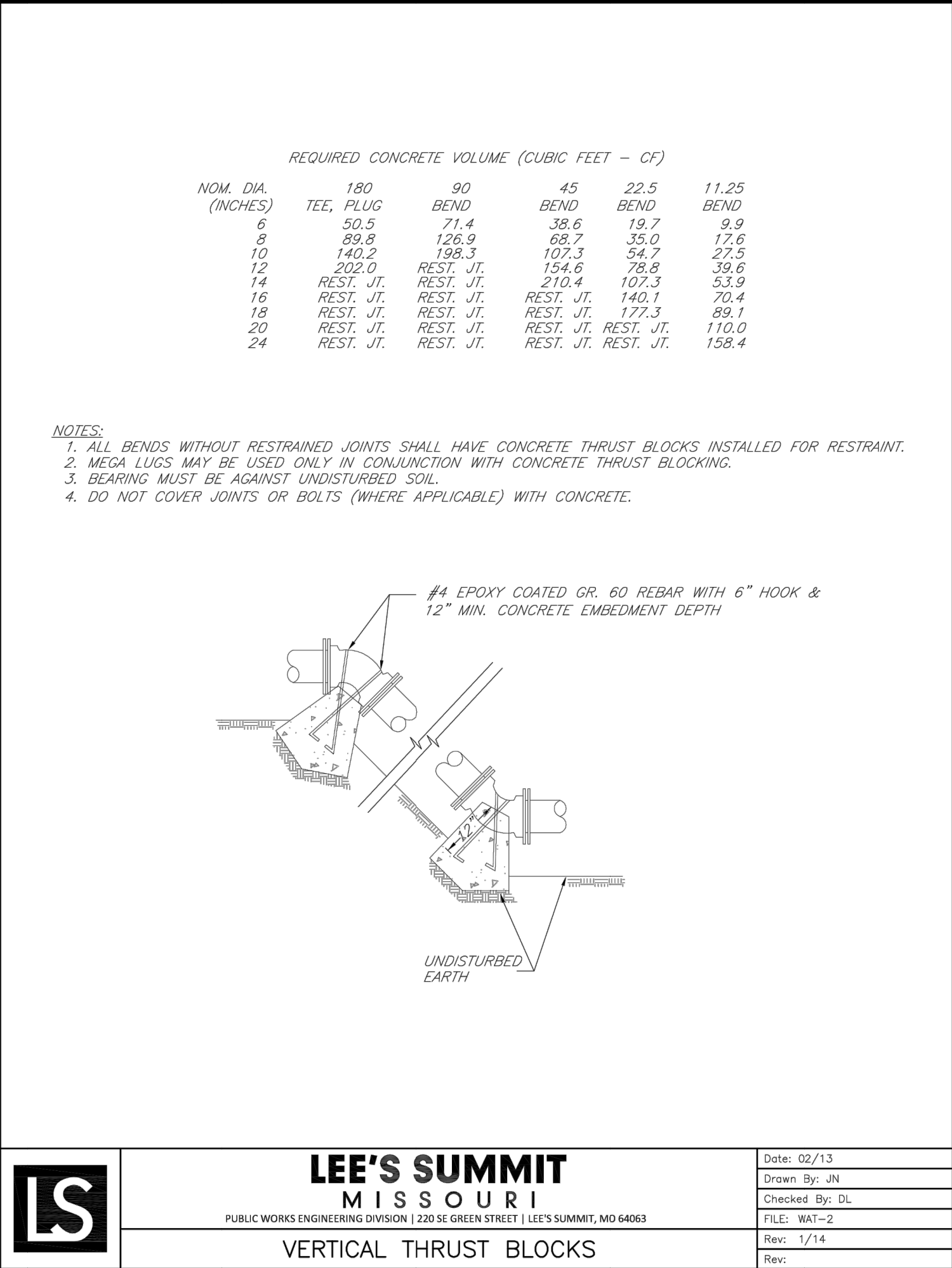
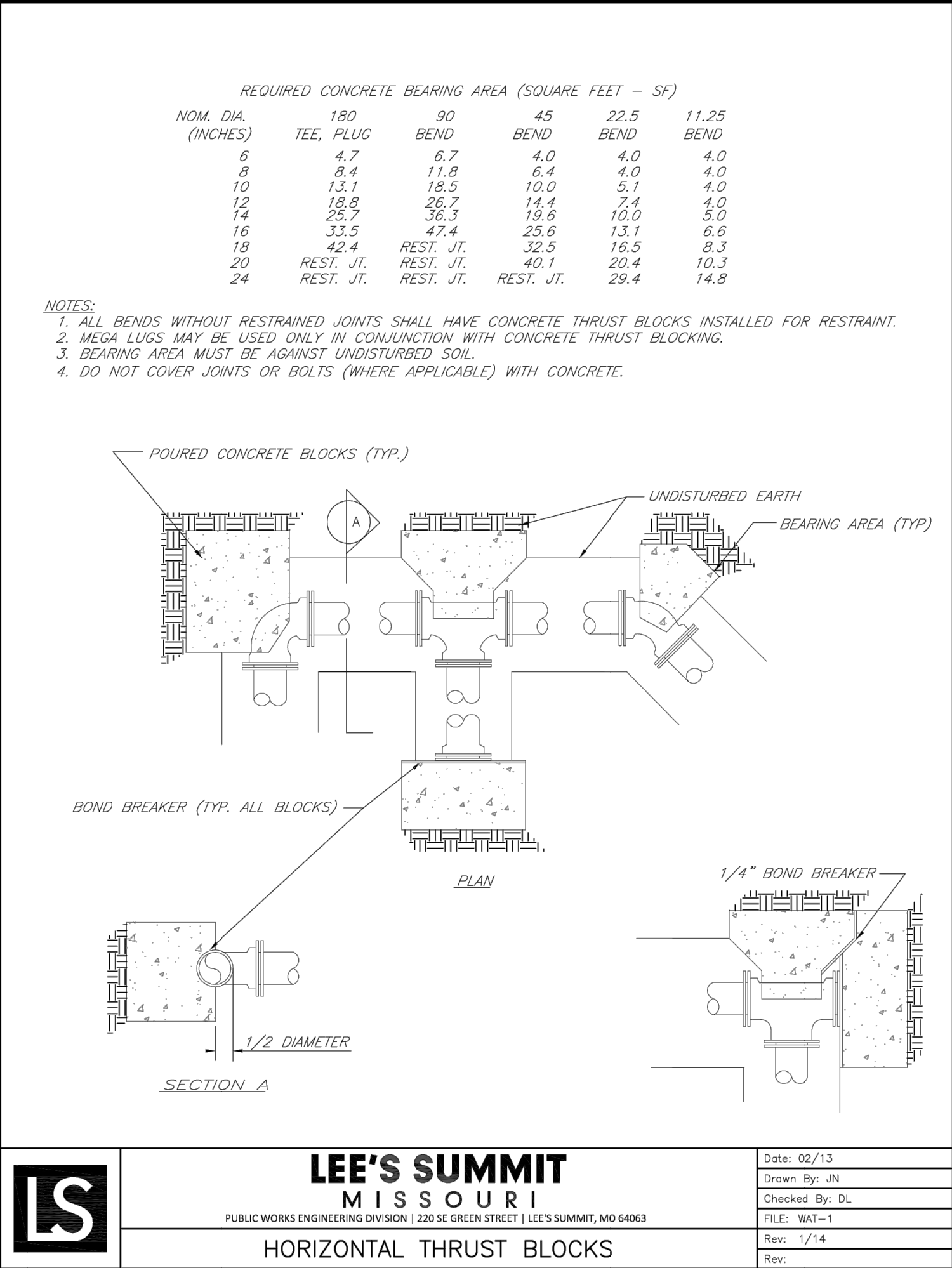


**ANDERSON
ENGINEERING**
EMPLOYEE OWNED

ENGINEERS • SURVEYORS • LABORATORIES • DRILLING
811 E. THIRD STREET • JOPLIN, MISSOURI 64801 • PHONE (417) 782-7399
A LICENSED MISSOURI ENGINEERING & SURVEYING CORPORATION - LC 62

REVISIONS			DRAWING INFO.	
NO.	DESCRIPTION	BY	DATE	
				DRAWN BY: GC
				CHECK BY: ZM
				LICENSE NO. PE-2012003232
				DATE: 12/2/2020
				ISSUED FOR: FOR REVIEW
				JOB NUMBER: 20K-C-10057
				MO COA NO. 0000682

S10, T47N, R32W
LEE'S SUMMIT, JACKSON COUNTY, MISSOURI



ANDERSON ENGINEERING
EMPLOYEE OWNED

AE

ENGINEERS • SURVEYORS • LABORATORIES • DRILLING
811 E. THIRD STREET • JOPLIN, MISSOURI 64801 • PHONE (417) 782-7399
A LICENSED MISSOURI ENGINEERING & SURVEYING CORPORATION - LC 62

DRAWING INFO.		REVISIONS	
NO.	DESCRIPTION	BY	DATE
1	GC		
2	ZM		
3	FE-2012003232		
4	12/2/2020		
5	FOR REVIEW		
6	20KCT0057		
7	MO COA NO.		
8	00062		

SUMMIT HOMES KC
HIGHLAND MEADOWS - 5TH PLAT

WATER LINE DETAILS

S10, T47N, R22W
LEE'S SUMMIT, JACKSON COUNTY, MISSOURI

STATE OF MISSOURI
ZACH A. MYERS
NUMBER
FE-2012009232
12/2/2020
PROFESSIONAL ENGINEER

SHEET NUMBER
C401
3 OF 3