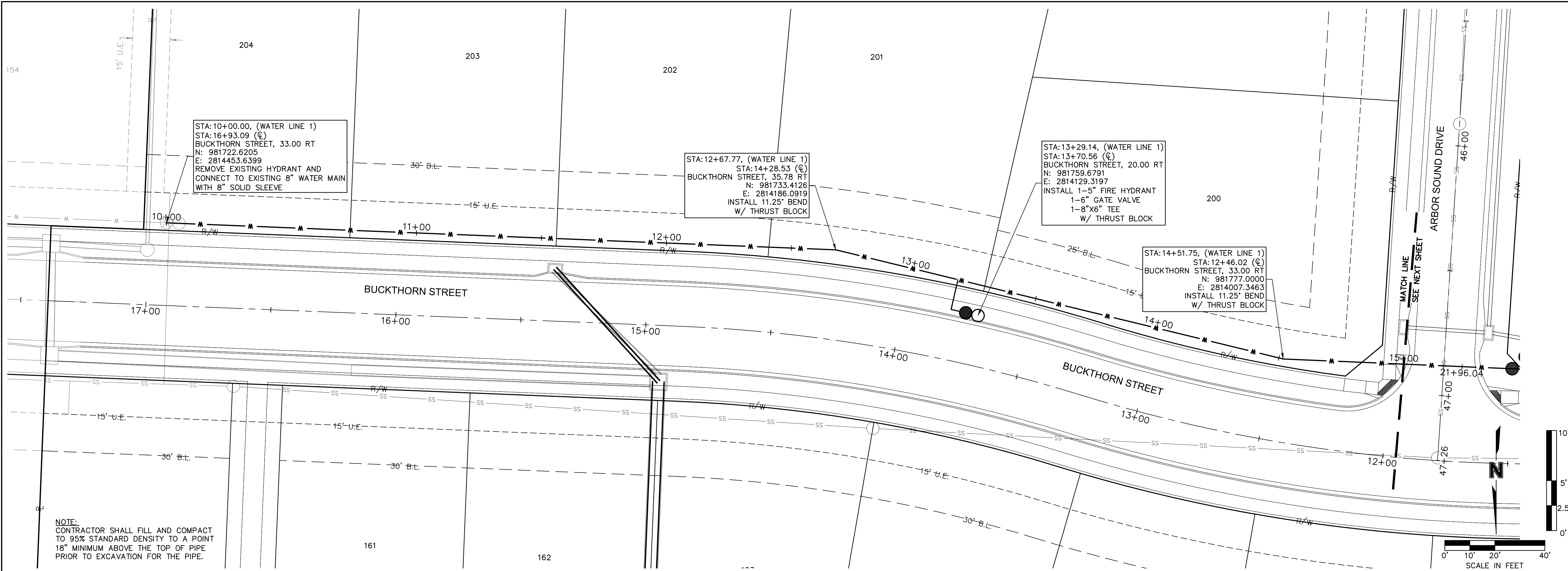
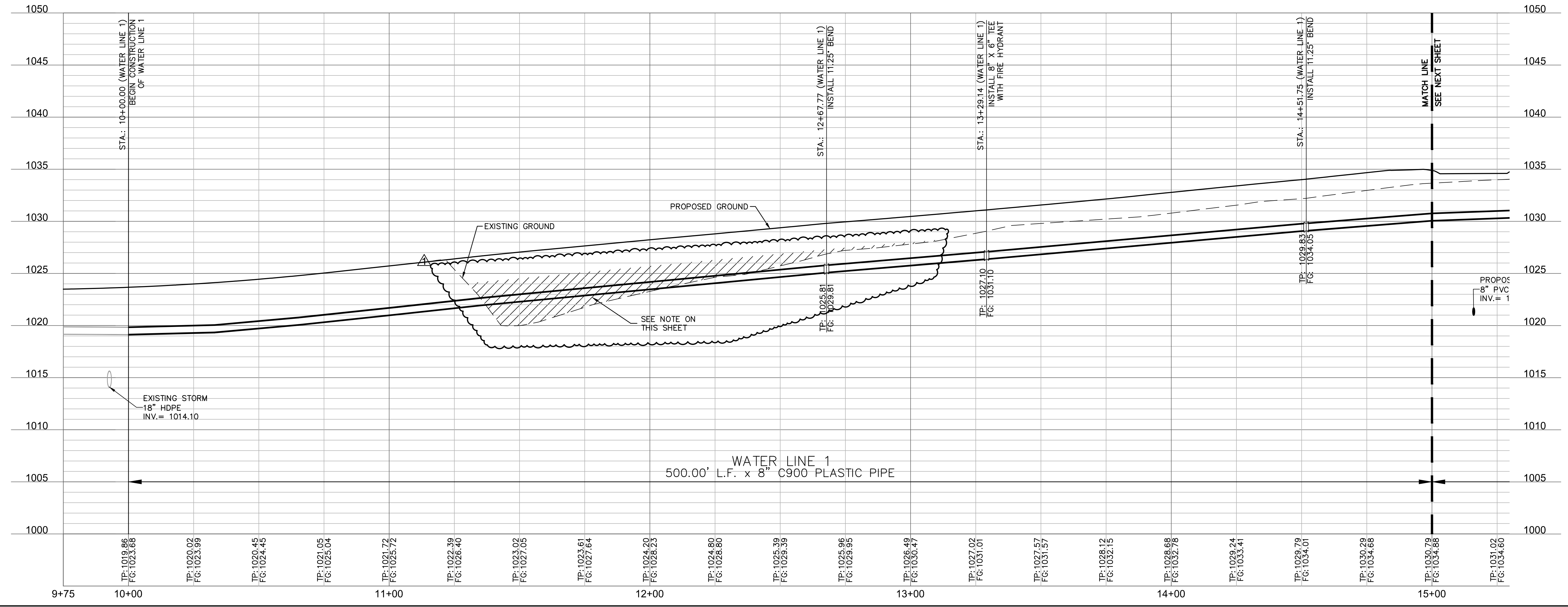
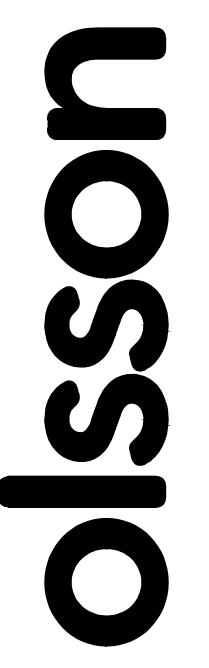


DWG: F:\2019\1501-2000\019-1605-A\10-Design\AutoCAD\Final Plans\Sheets\CNC\WATER\WC_WAT01_A191605.dwg USER: bworthley
 DATE: Nov 23, 2020 9:41am XREFS: C_PWA191605 C_PBASE_A191605 C_PUTIL_A191605 C_PTBK_A191605 C_PBNDY_A191605

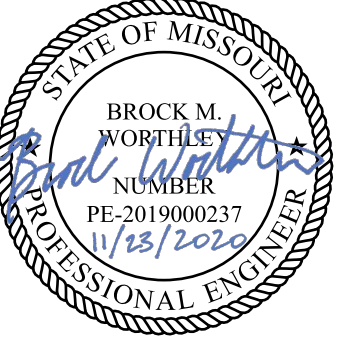


NOTE:
 CONTRACTOR SHALL FILL AND COMPACT TO 95% STANDARD DENSITY TO A POINT 18" MINIMUM ABOVE THE TOP OF PIPE PRIOR TO EXCAVATION FOR THE PIPE.





Olsson - Civil Engineering
 Missouri Certificate of Authority #01592
 1301 Burlington Street
 North Kansas City, MO 64116
 TEL 816.361.1177
 www.olsson.com



REV. NO.	DATE	REVISIONS DESCRIPTION	BY
1	11/23/2020	REVISED PER CITY COMMENTS	

WATER PLAN & PROFILE (LINE 1)
 WATER MAIN EXTENSION PLANS

HAWTHORN RIDGE
 THIRD PLAT

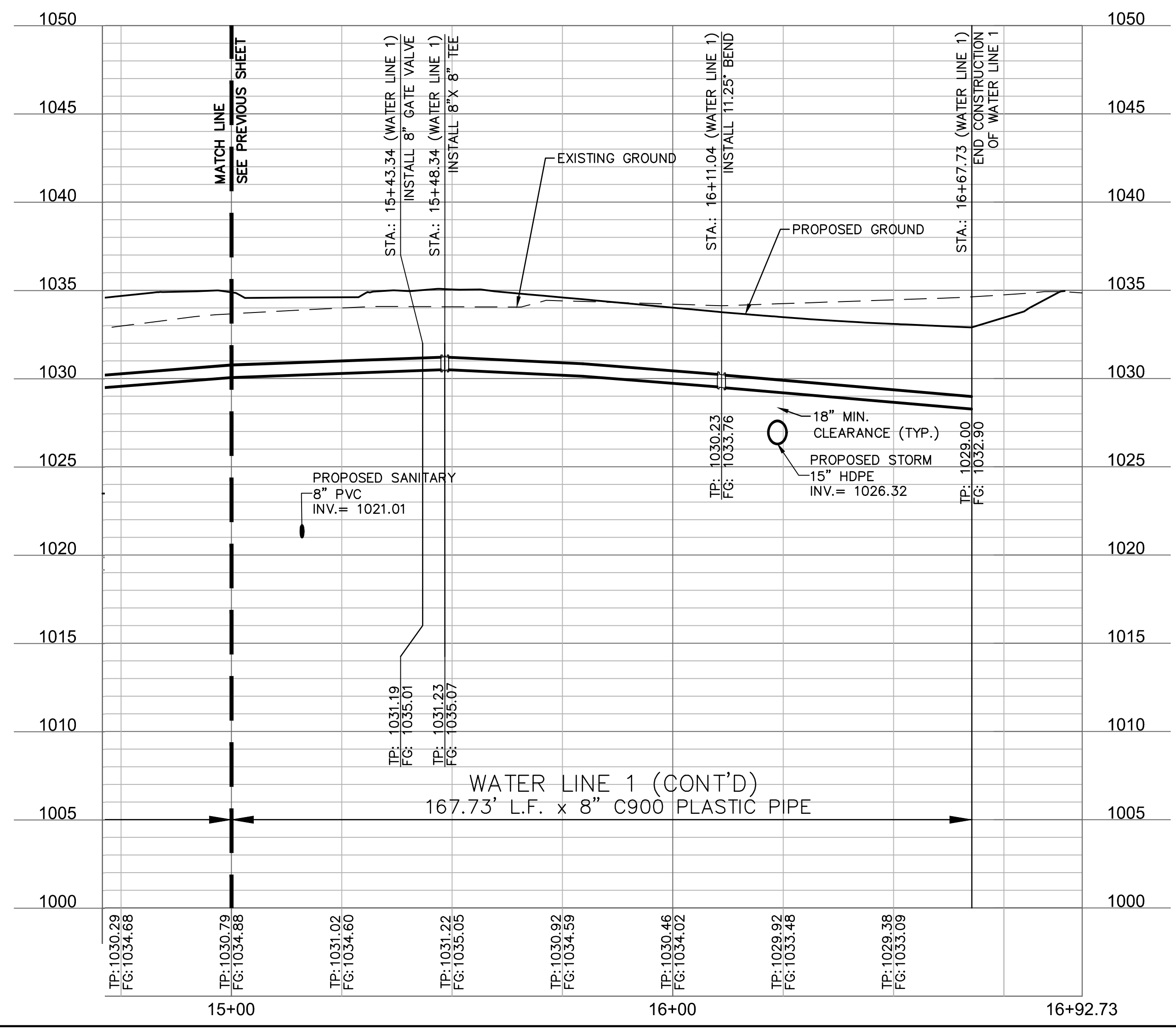
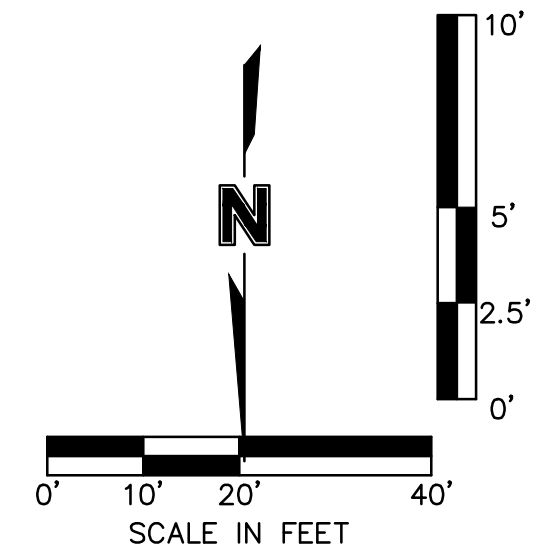
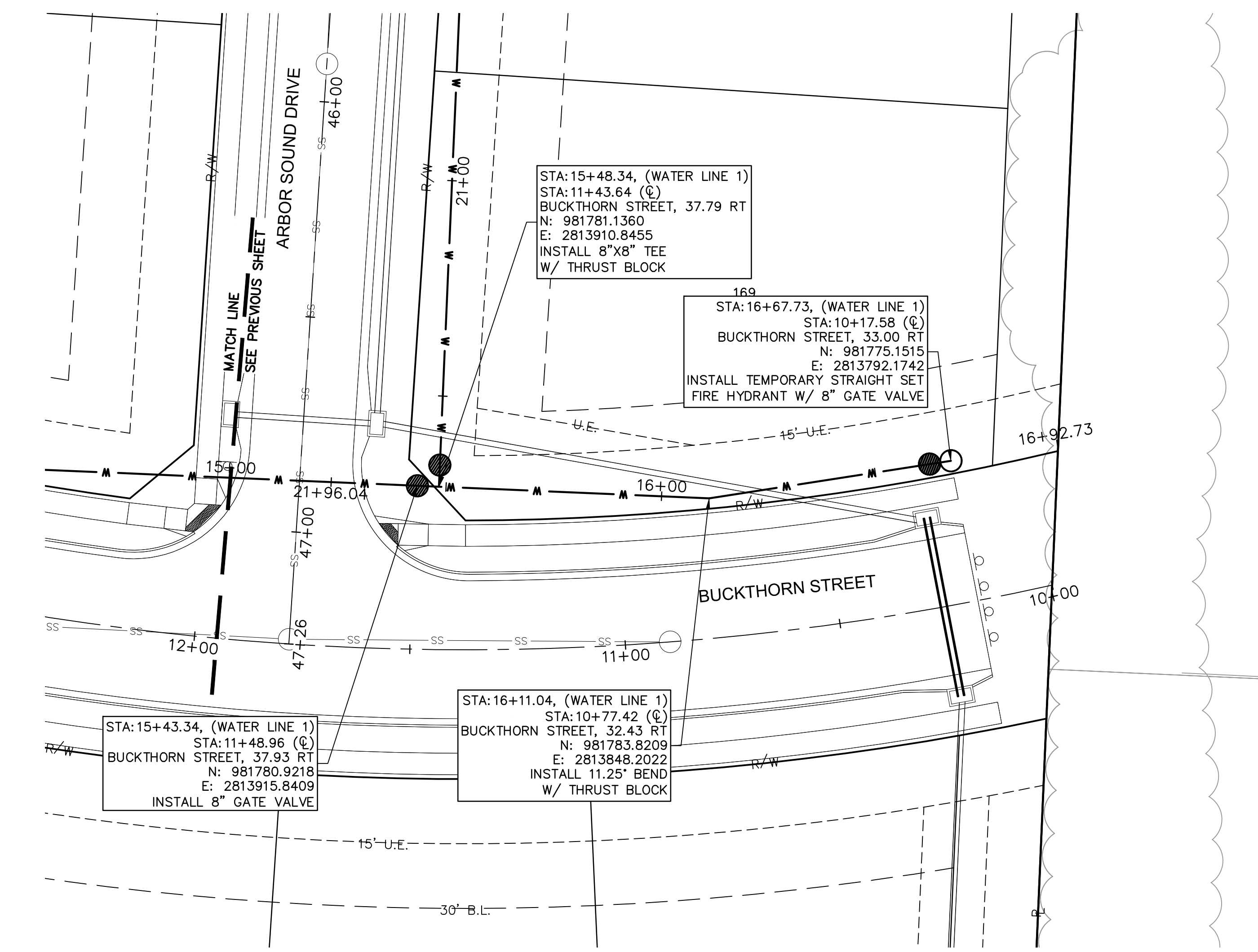
2020

REVISIONS

drawn by: OLS
 checked by: BMW
 approved by: BMW
 QA/QC by: JES
 project no.: A19-1605
 drawing no.: C_WAT01_A191605
 date: 10/22/2020

SHEET
 C303

DWG: F:\2019\1501-2000\019-1605-A\40-Design\AutoCAD\Final Plans\Sheets\CNC\WATER\WC_WAT01-A191605.dwg
 DATE: Nov 23, 2020 9:41am XREFS: C_PWA1P_A191605 C_PUB1T_A191605 C_PBLK_A191605 C_PBASE_A191605 C_PBNDY_A191605
 USER: bwerthley



olsson
 Olsson - Civil Engineering
 Missouri Certificate of Authority #01982
 1301 Burlington Street
 North Kansas City, MO 64116
 TEL 816.361.1177
 www.ollson.com

STATE OF MISSOURI
 BROCK M. WORTHELEY
 PE 2019000237
 11/23/2020
 PROFESSIONAL ENGINEER

REV. NO.	DATE	REVISIONS DESCRIPTION	BY

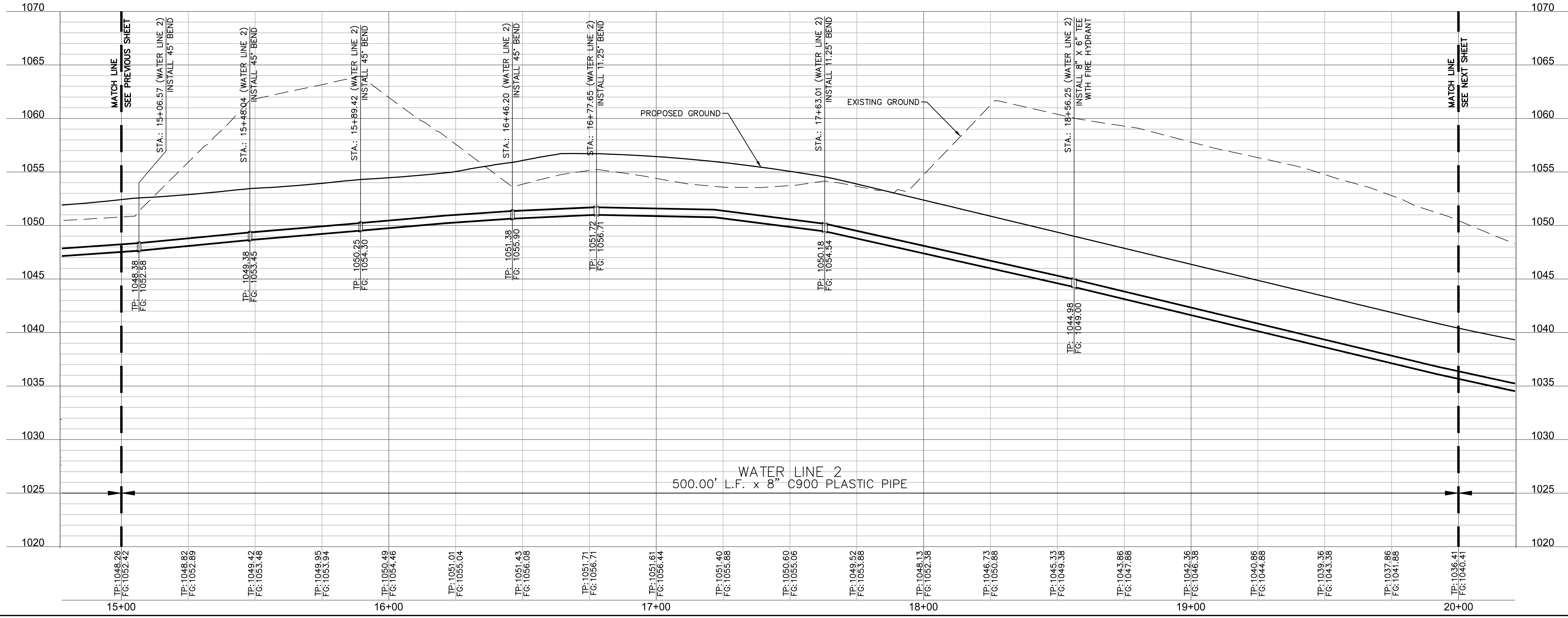
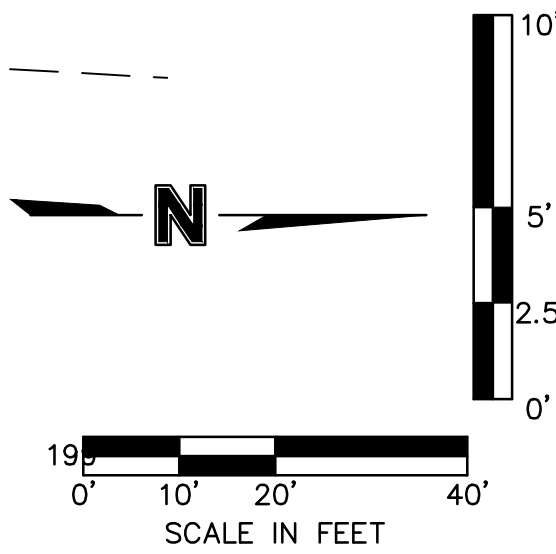
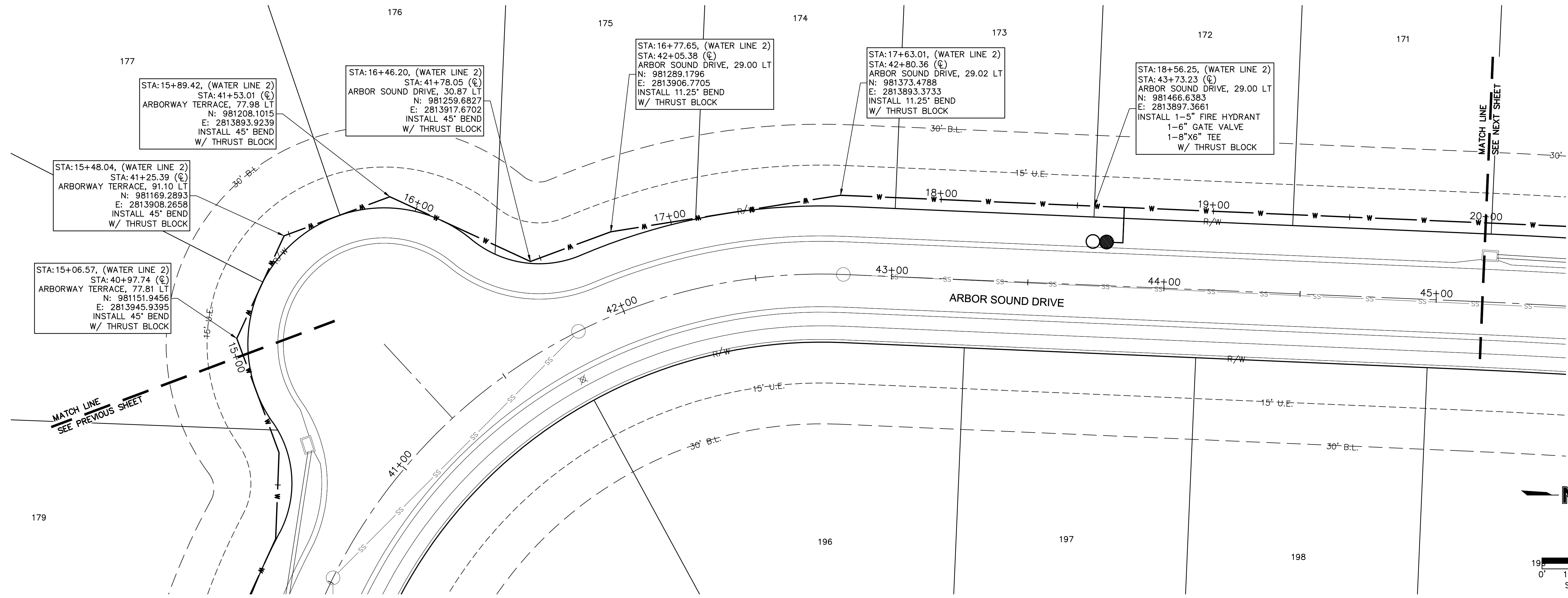
WATER PLAN & PROFILE (LINE 1 CONT)
 WATER MAIN EXTENSION PLANS
 HAWTHORN RIDGE
 THIRD PLAT
 LEE'S SUMMIT, MO

2020

drawn by: OLS
 checked by: BMW
 approved by: BMW
 QA/QC by: JES
 project no.: A19-1605
 drawing no.: C_WAT01_A191605
 date: 10/22/2020

SHEET
 C304

DWG: F:\2019\1501-2000\019-1605-A\40-Design\AutoCAD\Final Plans\Sheets\CNCV\WATER\WATER\WAT02_A191605.dwg
 DATE: Nov 23, 2020 9:42am XREFS: C:\PWA\T\A191605 C:\PWA\T\A191605 C:\PWA\T\A191605 C:\PWA\T\A191605 C:\PWA\T\A191605 C:\PWA\T\A191605
 USER: bworthley



Olsson - Civil Engineering
 Missouri Certificate of Authority #001592
 1301 Burlington Street
 North Kansas City, MO 64116
 TEL 816.361.1177
 www.olsson.com

REV. NO.	DATE	REVISIONS DESCRIPTION	BY

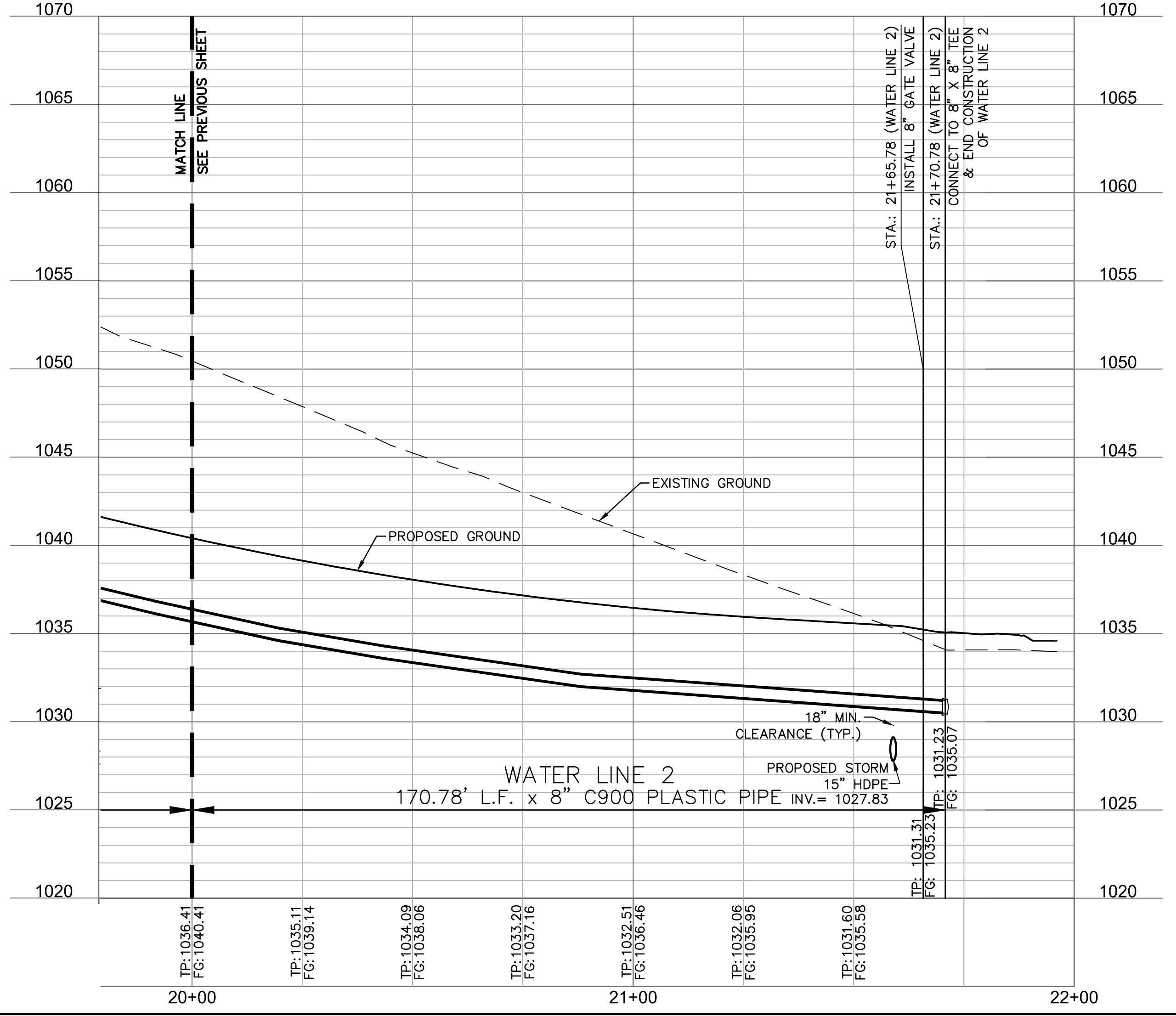
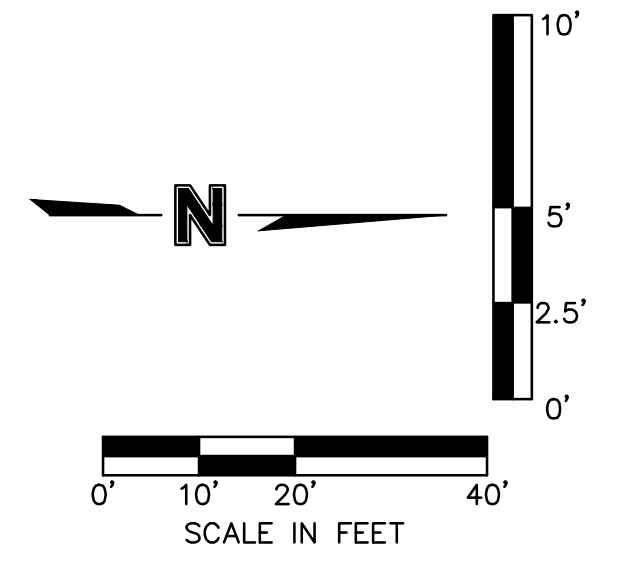
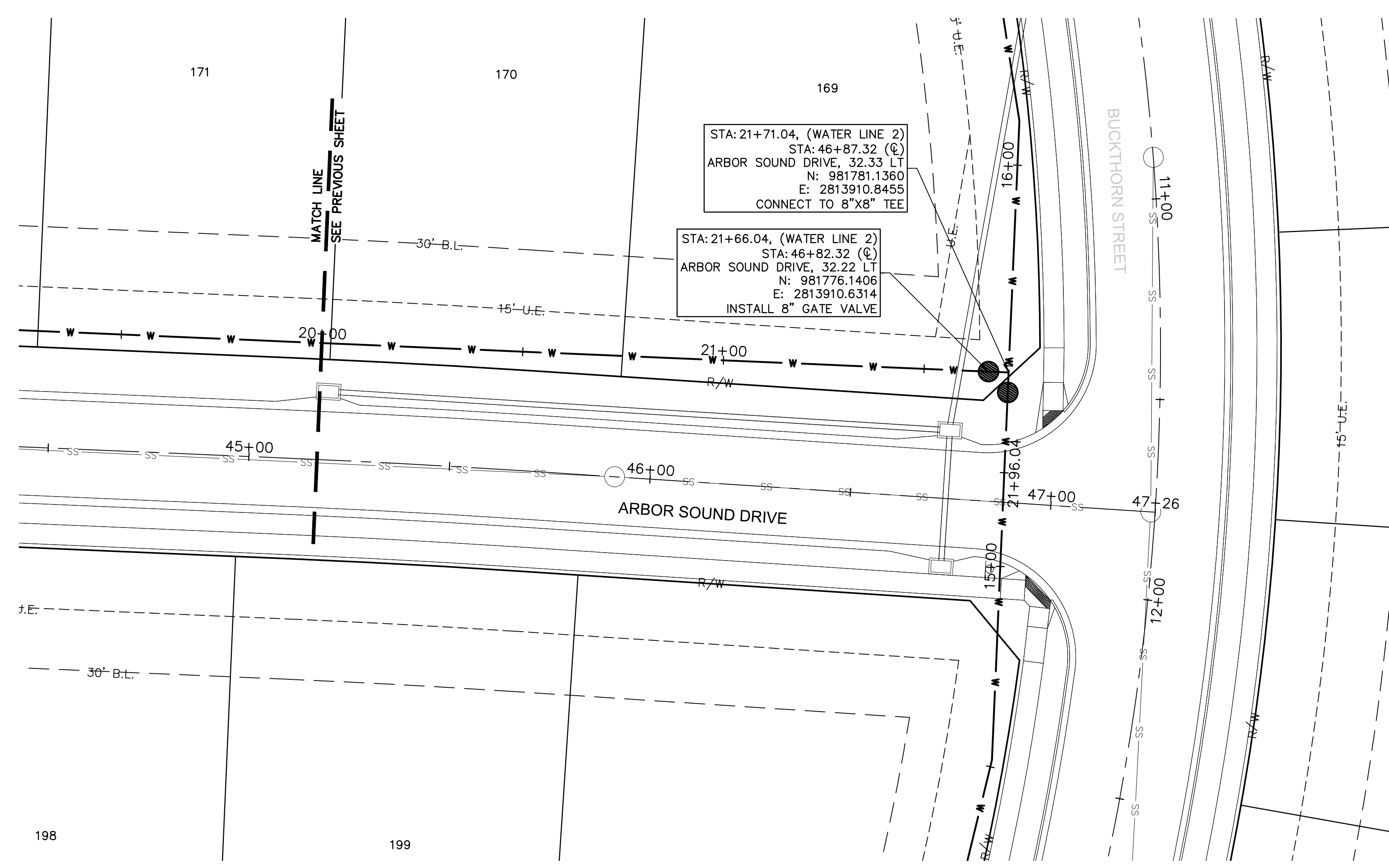
WATER PLAN & PROFILE (LINE 2 CONT)
 WATER MAIN EXTENSION PLANS
 HAWTHORN RIDGE
 THIRD PLAT
 LEE'S SUMMIT, MO

2020

drawn by: OLS
 checked by: BMW
 approved by: BMW
 QA/QC by: JES
 project no.: A19-1605
 drawing no.: C_WAT02_A191605
 date: 10/22/2020

SHEET
C306

DWG: F:\2019\1501-2000\019-1605-A\40-Design\AutoCAD\Final Plans\Sheets\CNC\WATER\WC_WAT02_A191605.dwg
 DATE: Nov 23, 2020 9:43am XREFS: C:\PWA\A191605 C:\PWA\A191605 C:\PWA\A191605 C:\PWA\A191605 C:\PWA\A191605 C:\PWA\A191605
 USER: bworthley



olsson

Olsson - Civil Engineering
Missouri Certification of Authority #01592
1307 Buffington Street
North Kansas City, MO 64116
TEL 816.361.1177
www.olsson.com

STATE OF MISSOURI
BROCK M. WORTHLEY
NUMBER: 1118/2020
PE-2019000237
PROFESSIONAL ENGINEER

REV. NO.	REVISIONS DESCRIPTION	DATE	BY

WATER PLAN & PROFILE (LINE 2 CONT)
WATER MAIN EXTENSION PLANS

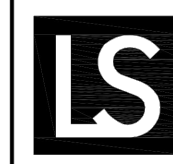
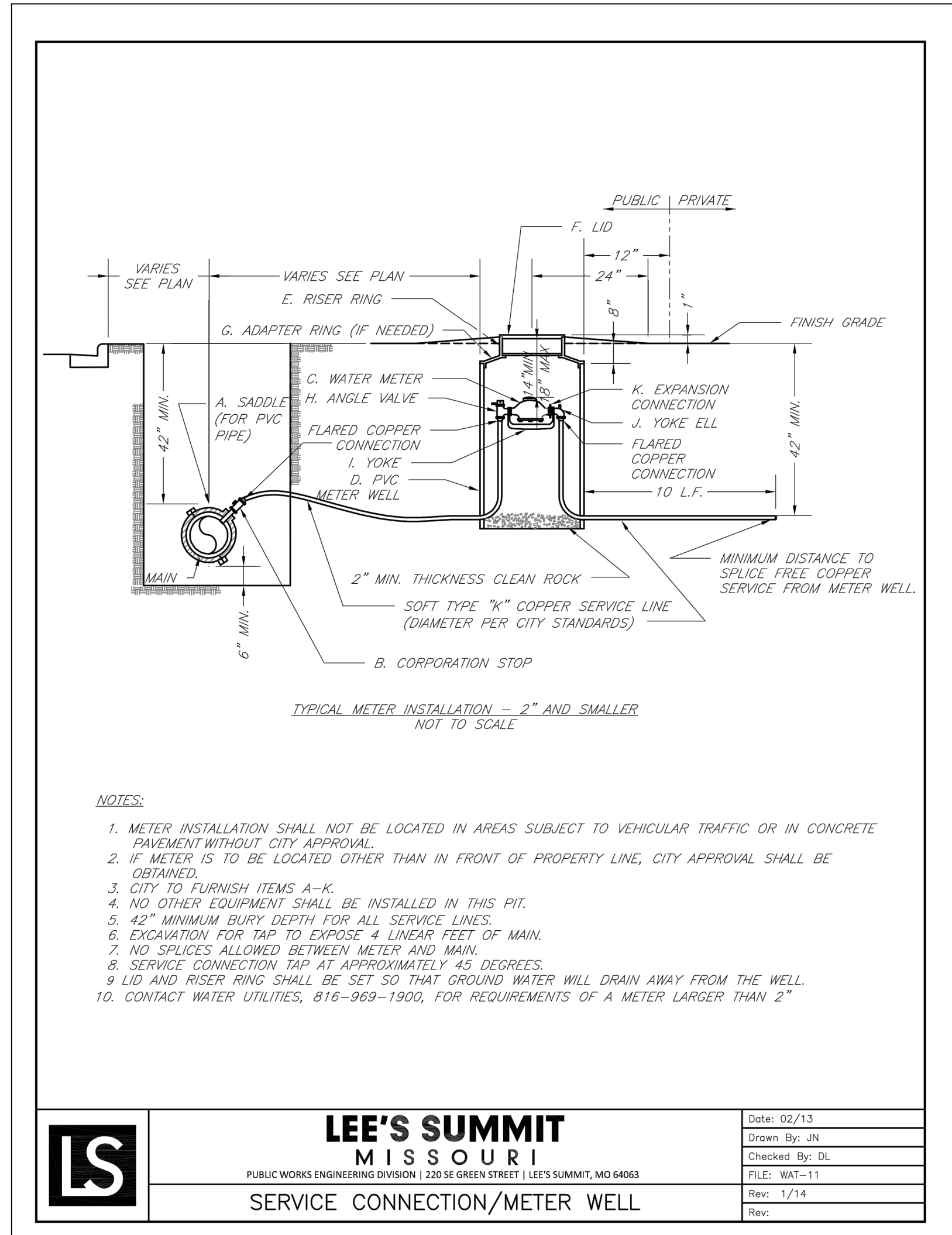
HAWTHORN RIDGE
THIRD PLAT

2020

REVISIONS

drawn by: OLS
 checked by: BMW
 approved by: BMW
 QA/QC by: JES
 project no.: A19-1605
 drawing no.: C_WAT02_A191605
 date: 10/22/2020

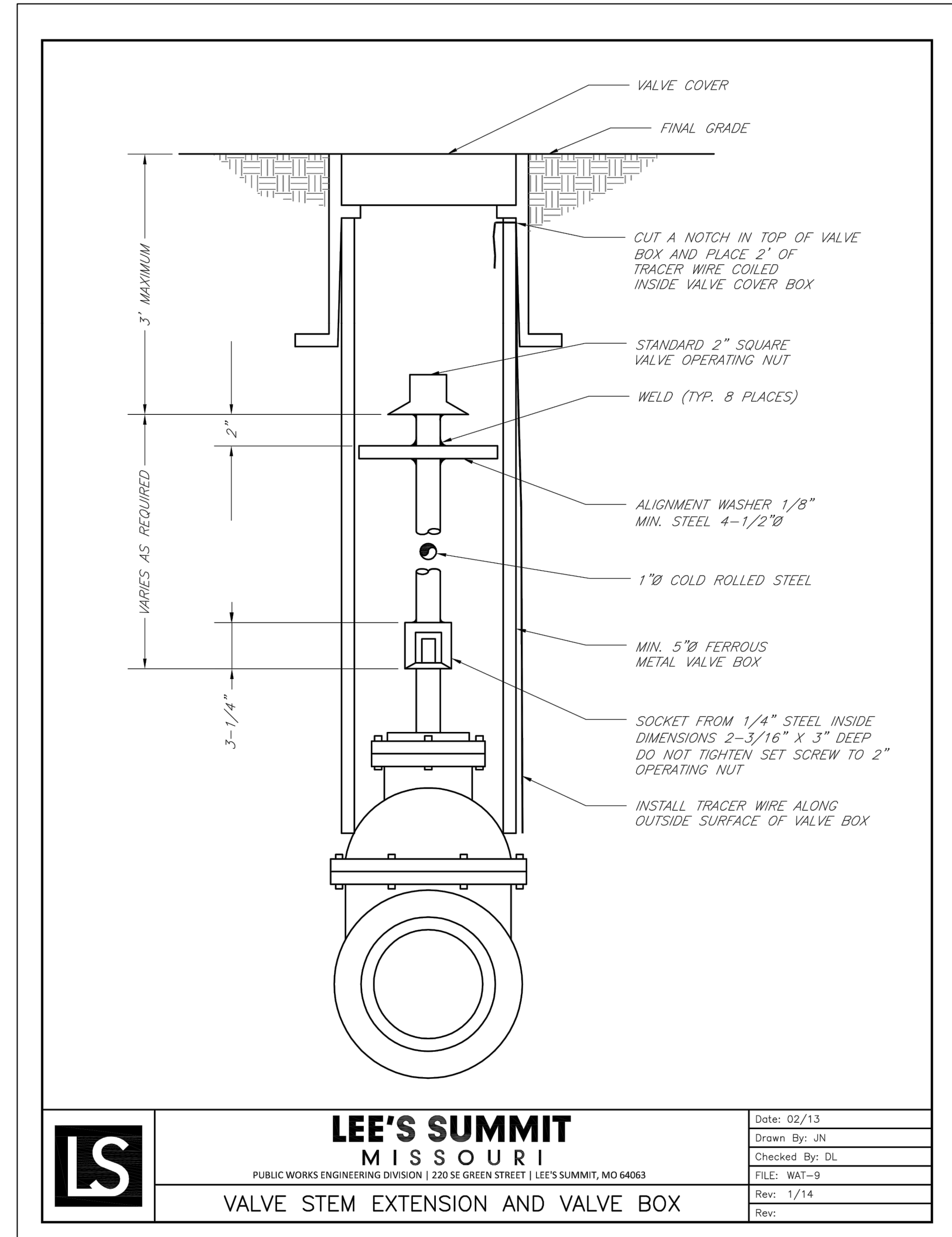
SHEET
C307



LEE'S SUMMIT MISSOURI

PUBLIC WORKS ENGINEERING DIVISION | 220 SE GREEN STREET | LEE'S SUMMIT, MO 64063

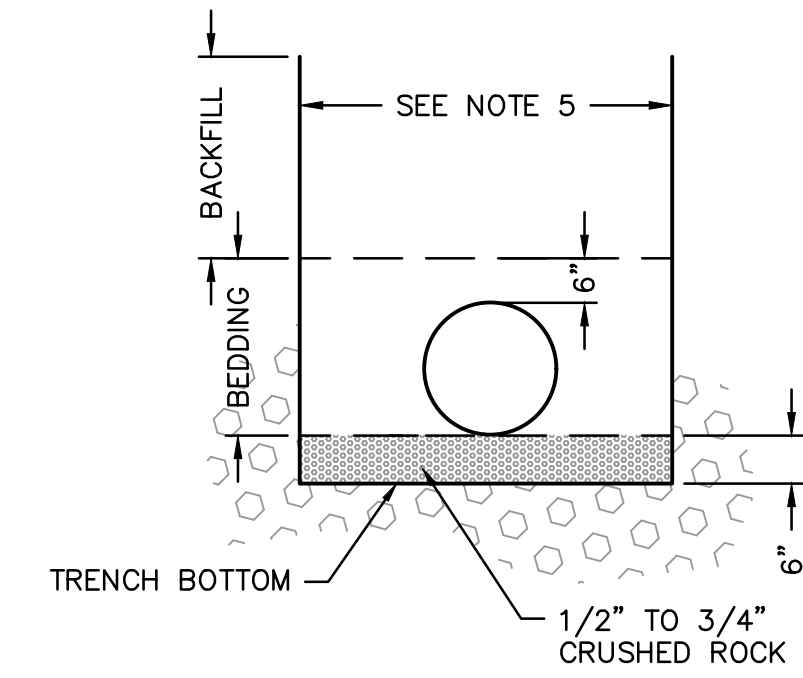
Date:	02/13
Drawn By:	JN
Checked By:	DL
File:	WAT-11
Rev:	1/14
Rev:	



LEE'S SUMMIT MISSOURI

PUBLIC WORKS ENGINEERING DIVISION | 220 SE GREEN STREET | LEE'S SUMMIT, MO 64063

Date:	02/13
Drawn By:	JN
Checked By:	DL
File:	WAT-9
Rev:	1/14
Rev:	



TYPICAL TRENCH SECTION

NOTES:

- BELL HOLES SHALL BE DUG SO THAT NO PART OF THE BELL SHALL BE IN CONTACT WITH THE TRENCH BOTTOM.
- BEDDING AGGREGATE MATERIAL SHALL BE PER SECTION 6900 AND 2102 OF THE CITY DESIGN AND CONSTRUCTION MANUAL. BEDDING AGGREGATE SHALL BE PLACED FROM A LEVEL 6 INCHES BELOW THE BOTTOM OF THE PIPE TO A LEVEL 6 INCHES ABOVE THE TOP OF THE PIPE AS SHOWN ABOVE.
- BACKFILL MATERIAL AND PLACEMENT SHALL BE PER SECTION 6900 AND 2102 OF THE CITY DESIGN AND CONSTRUCTION MANUAL.
- TRENCHING SHALL BE IN ACCORDANCE WITH CURRENT OSHA REGULATIONS. SLOPES MUST NOT EXTEND BELOW TOP OF BEDDING.
- MINIMUM AND MAXIMUM TRENCH WIDTHS SHALL BE IN ACCORDANCE WITH PIPE MANUFACTURERS RECOMMENDATION AS APPROVED ON ENGINEERING PLANS.

UNDERGROUND PIPE INSTALLATION FOR WATER PIPING

NOT TO SCALE



REV. NO.	DATE	REVISIONS DESCRIPTION	BY

2020

WATER MAIN DETAILS
 WATER MAIN EXTENSION PLANS
 HAWTHORN RIDGE
 THIRD PLAT
 LEE'S SUMMIT, MO

drawn by:	OLS
checked by:	BMW
approved by:	BMW
QA/QC by:	JES
project no.:	A19-1605
drawing no.:	C_DTL01_A191605
date:	10/22/2020

SHEET
 C310