

# Model: G-163-VG

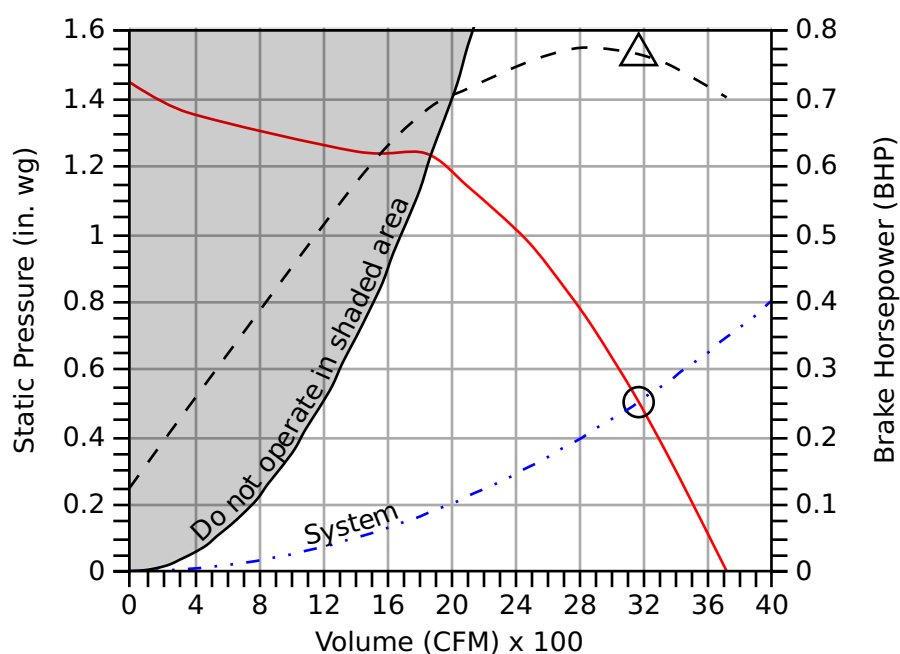
## Direct Drive Centrifugal Roof Exhaust Fan

**Standard Construction Features:** Aluminum housing. Centrifugal backward inclined aluminum (composite for sizes 60-95) wheel. Direct driven motor mounted on vibration isolation.

Fan Configuration	
Drive type	Direct

Performance	
Requested Volume (CFM)	3,160
Actual Volume (CFM)	3,160
Total External SP (in. wg)	0.5
Fan RPM	1,259
Operating Power (bhp)	0.76
Startup Power (bhp)	0.76
Air Stream Temp (F)	70
Start-up Temp (F)	70
Air Density (lbs/ft <sup>3</sup> )	0.072
Elevation (ft)	1000
Static Efficiency (%)	33
Outlet Velocity (ft/min)	1,717

Motor	
Size (hp)	2
V/C/P	208/60/1



- Fan curve
- - - Brake horsepower curve
- Operating Point SP
- △ Operating Bhp point
- Max system curve
- . . - System curve

## Sound

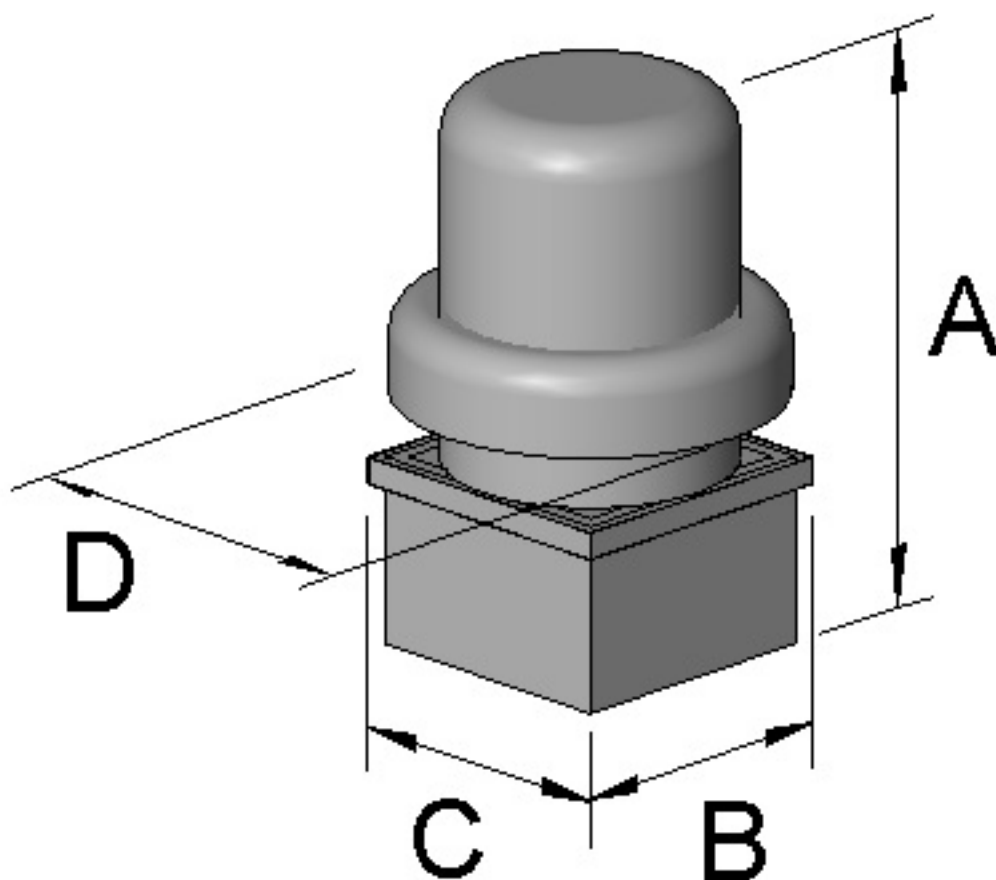
	Octave Bands (hz)								LwA	dBA	Sones
	62.5	125	250	500	1000	2000	4000	8000			
Inlet	77	80	85	75	71	69	65	59	79	68	16.4



Greenheck Fan Corporation certifies that the model shown herein is licensed to bear the AMCA Seal. The ratings shown are based on tests and procedures performed in accordance with AMCA Publication 211 and AMCA Publication 311 and comply with the requirements of the AMCA Certified Ratings Program. The AMCA certified ratings seal applies to sound and air performance ratings only. Performance certified is for installation type A: Free inlet, free outlet. Power rating does not include transmission losses. Performance ratings include the effects of birdscreen. The sound ratings shown are loudness values in hemispherical sones at 1.5 m (5 ft) in a hemispherical free field calculated per ANSI/AMCA Standard 301. Values shown are for Installation Type A: free inlet hemispherical sone levels. dBA levels are not licensed by AMCA International. The AMCA Certified Ratings Seal for Sound applies to inlet sone ratings only.

FLA - based on tables 150 or 148 of National Electric Code 2002. Actual motor FLA may vary, for sizing thermal overload, consult factory.

Dimensions and Weights		
Label	Value	Description
-	74	Weight w/o accessories (lbs)
A	36	Overall Height (in)
D	28	Overall Width (in)
B	22	Curb Cap Width (in)
C	22	Curb Cap Length (in)
-	16	Duct / Damper Width (in)
-	16	Duct / Damper Length (in)
-	18.5	Roof Opening Width (in)
-	18.5	Roof Opening Length (in)



\*All dimensions are in inches.

# Model: G-090-VG

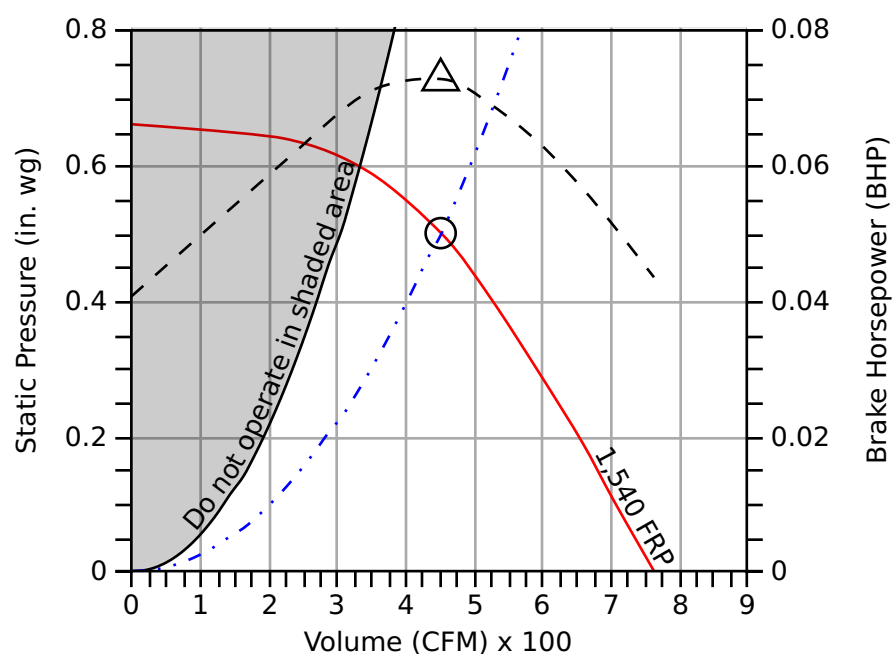
## Direct Drive Centrifugal Roof Exhaust Fan

**Standard Construction Features:** Aluminum housing. Centrifugal backward inclined aluminum (composite for sizes 60-95) wheel. Direct driven motor mounted on vibration isolation.

Fan Configuration	
Drive type	Direct

Performance	
Requested Volume (CFM)	450
Actual Volume (CFM)	450
Total External SP (in. wg)	0.5
Fan RPM	1,540
Operating Power (bhp)	0.07
Startup Power (bhp)	0.07
Air Stream Temp (F)	70
Start-up Temp (F)	70
Air Density (lbs/ft <sup>3</sup> )	0.072
Elevation (ft)	1000
Static Efficiency (%)	49
Outlet Velocity (ft/min)	643

Motor	
Size (hp)	1/10
V/C/P	115/60/1
NEC FLA (Amps)	1.38



- Fan curve
- - - Brake horsepower curve
- Operating Point SP
- △ Operating Bhp point
- Max system curve
- ... System curve

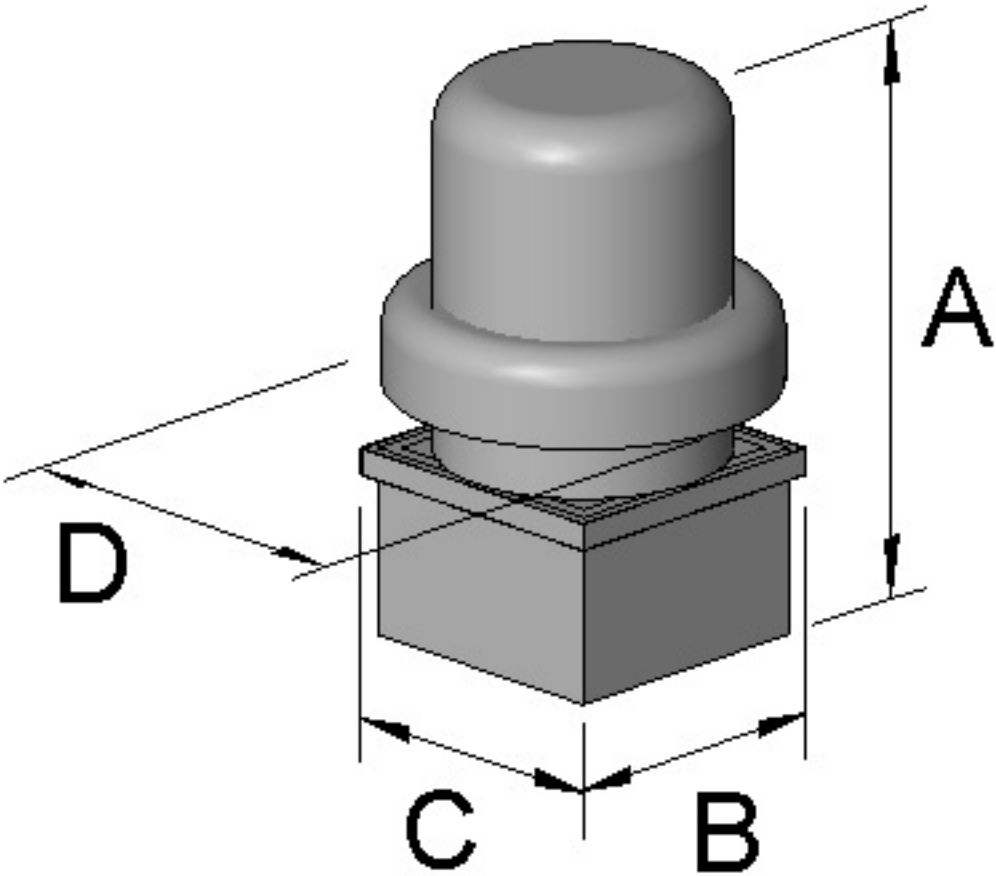
## Sound

	Octave Bands (hz)								LwA	dBA	Sones
	62.5	125	250	500	1000	2000	4000	8000			
Inlet	76	73	68	62	58	54	51	43	65	54	7.3



Greenheck Fan Corporation certifies that the model shown herein is licensed to bear the AMCA Seal. The ratings shown are based on tests and procedures performed in accordance with AMCA Publication 211 and AMCA Publication 311 and comply with the requirements of the AMCA Certified Ratings Program. The AMCA certified ratings seal applies to sound and air performance ratings only. Performance certified is for installation type A: Free inlet, free outlet. Power rating does not include transmission losses. Performance ratings include the effects of birdscreen. The sound ratings shown are loudness values in hemispherical sones at 1.5 m (5 ft) in a hemispherical free field calculated per ANSI/AMCA Standard 301. Values shown are for Installation Type A: free inlet hemispherical sone levels. dBA levels are not licensed by AMCA International. The AMCA Certified Ratings Seal for Sound applies to inlet sone ratings only.

Dimensions and Weights		
Label	Value	Description
-	29	Weight w/o accessories (lbs)
A	27	Overall Height (in)
D	22	Overall Width (in)
B	17	Curb Cap Width (in)
C	17	Curb Cap Length (in)
-	10	Duct / Damper Width (in)
-	10	Duct / Damper Length (in)
-	12.5	Roof Opening Width (in)
-	12.5	Roof Opening Length (in)



\*All dimensions are in inches.

# Model: G-090-VG

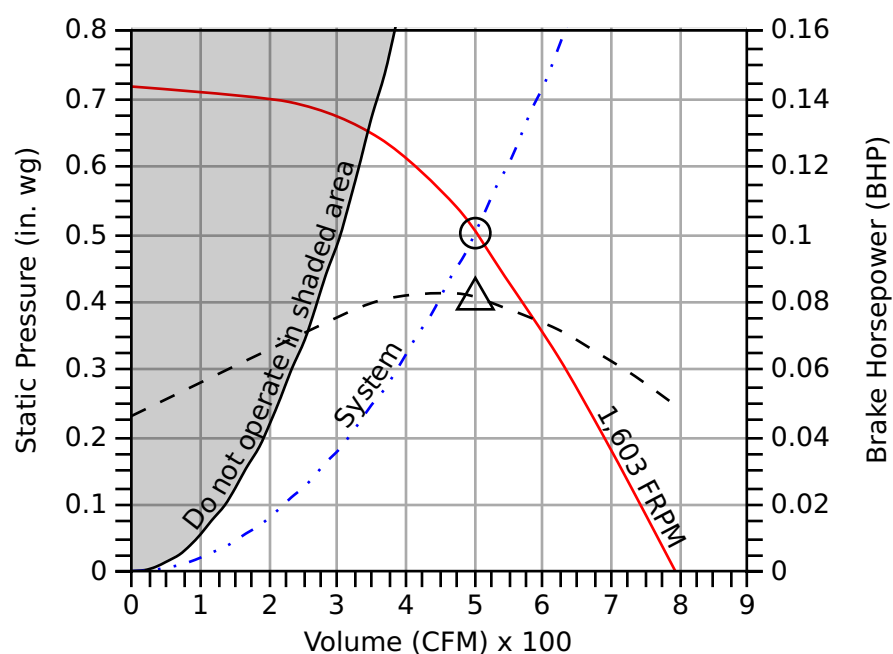
## Direct Drive Centrifugal Roof Exhaust Fan

**Standard Construction Features:** Aluminum housing. Centrifugal backward inclined aluminum (composite for sizes 60-95) wheel. Direct driven motor mounted on vibration isolation.

Fan Configuration	
Drive type	Direct

Performance	
Requested Volume (CFM)	500
Actual Volume (CFM)	500
Total External SP (in. wg)	0.5
Fan RPM	1,603
Operating Power (bhp)	0.08
Startup Power (bhp)	0.08
Air Stream Temp (F)	70
Start-up Temp (F)	70
Air Density (lbs/ft <sup>3</sup> )	0.072
Elevation (ft)	1000
Static Efficiency (%)	49
Outlet Velocity (ft/min)	714

Motor	
Size (hp)	1/10
V/C/P	115/60/1
NEC FLA (Amps)	1.38



- Fan curve
- - - Brake horsepower curve
- Operating Point SP
- △ Operating Bhp point
- Max system curve
- ... System curve

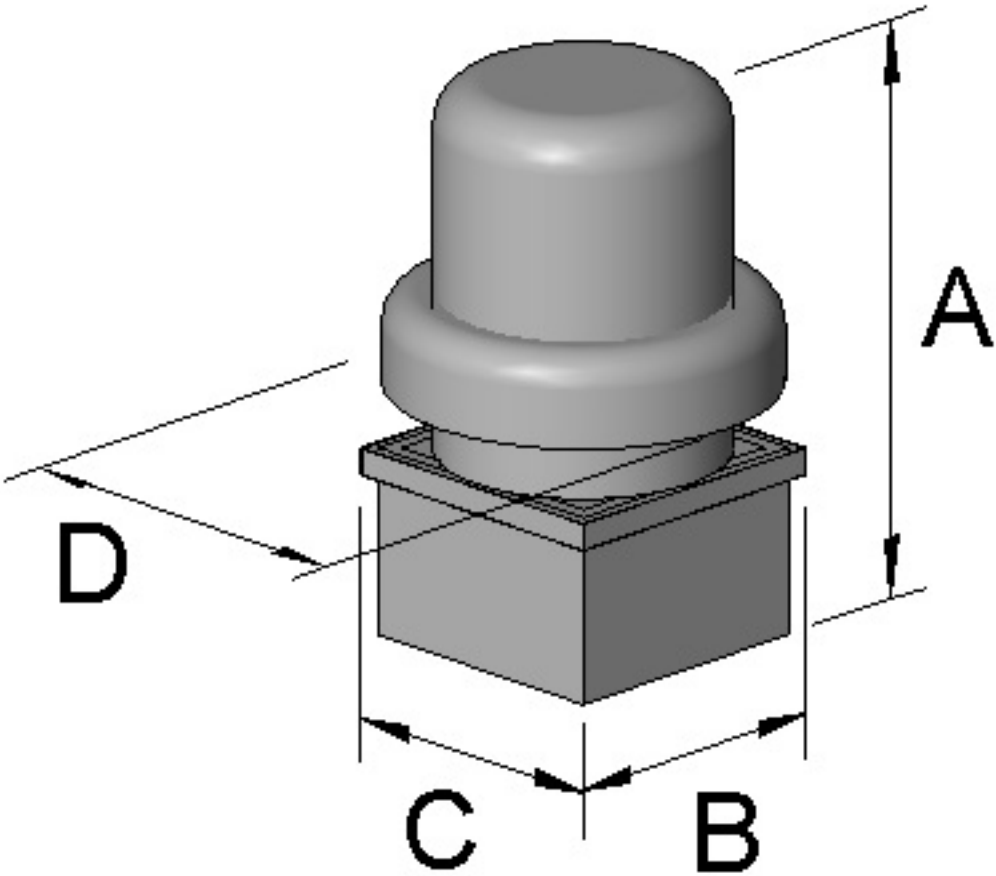
## Sound

	Octave Bands (hz)								LwA	dBA	Sones
	62.5	125	250	500	1000	2000	4000	8000			
Inlet	76	74	70	63	59	56	52	45	67	55	7.8



Greenheck Fan Corporation certifies that the model shown herein is licensed to bear the AMCA Seal. The ratings shown are based on tests and procedures performed in accordance with AMCA Publication 211 and AMCA Publication 311 and comply with the requirements of the AMCA Certified Ratings Program. The AMCA certified ratings seal applies to sound and air performance ratings only. Performance certified is for installation type A: Free inlet, free outlet. Power rating does not include transmission losses. Performance ratings include the effects of birdscreen. The sound ratings shown are loudness values in hemispherical sones at 1.5 m (5 ft) in a hemispherical free field calculated per ANSI/AMCA Standard 301. Values shown are for Installation Type A: free inlet hemispherical sone levels. dBA levels are not licensed by AMCA International. The AMCA Certified Ratings Seal for Sound applies to inlet sone ratings only.

Dimensions and Weights		
Label	Value	Description
-	29	Weight w/o accessories (lbs)
A	27	Overall Height (in)
D	22	Overall Width (in)
B	17	Curb Cap Width (in)
C	17	Curb Cap Length (in)
-	10	Duct / Damper Width (in)
-	10	Duct / Damper Length (in)
-	12.5	Roof Opening Width (in)
-	12.5	Roof Opening Length (in)



\*All dimensions are in inches.

# Model: G-143-VG

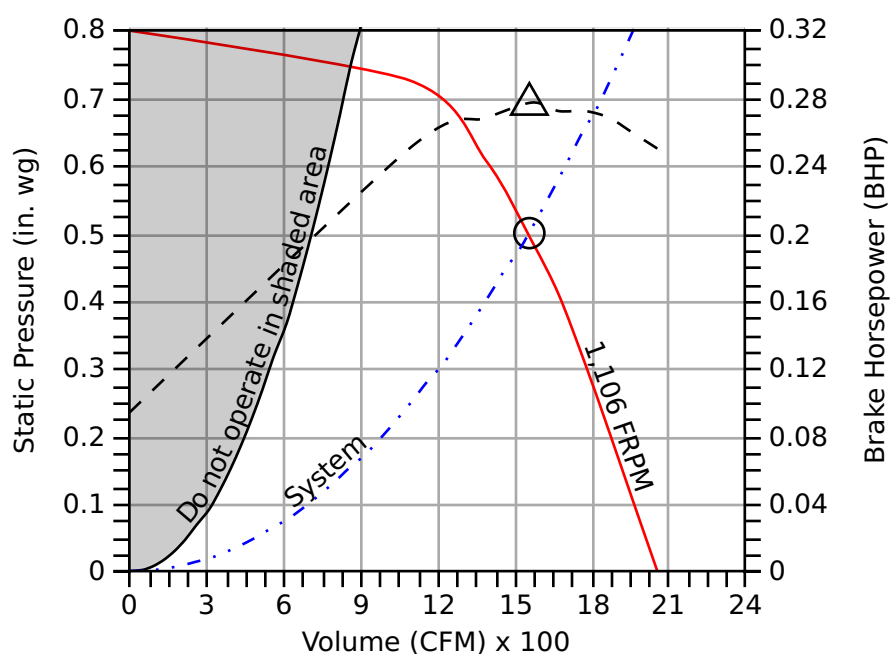
## Direct Drive Centrifugal Roof Exhaust Fan

**Standard Construction Features:** Aluminum housing. Centrifugal backward inclined aluminum (composite for sizes 60-95) wheel. Direct driven motor mounted on vibration isolation.

Fan Configuration	
Drive type	Direct

Performance	
Requested Volume (CFM)	1,550
Actual Volume (CFM)	1,550
Total External SP (in. wg)	0.5
Fan RPM	1,106
Operating Power (bhp)	0.28
Startup Power (bhp)	0.28
Air Stream Temp (F)	70
Start-up Temp (F)	70
Air Density (lbs/ft <sup>3</sup> )	0.072
Elevation (ft)	1000
Static Efficiency (%)	44
Outlet Velocity (ft/min)	1,174

Motor	
Size (hp)	1/2
V/C/P	115/60/1
NEC FLA (Amps)	6.7



- Fan curve
- - - Brake horsepower curve
- Operating Point SP
- △ Operating Bhp point
- Max system curve
- . . - System curve

## Sound

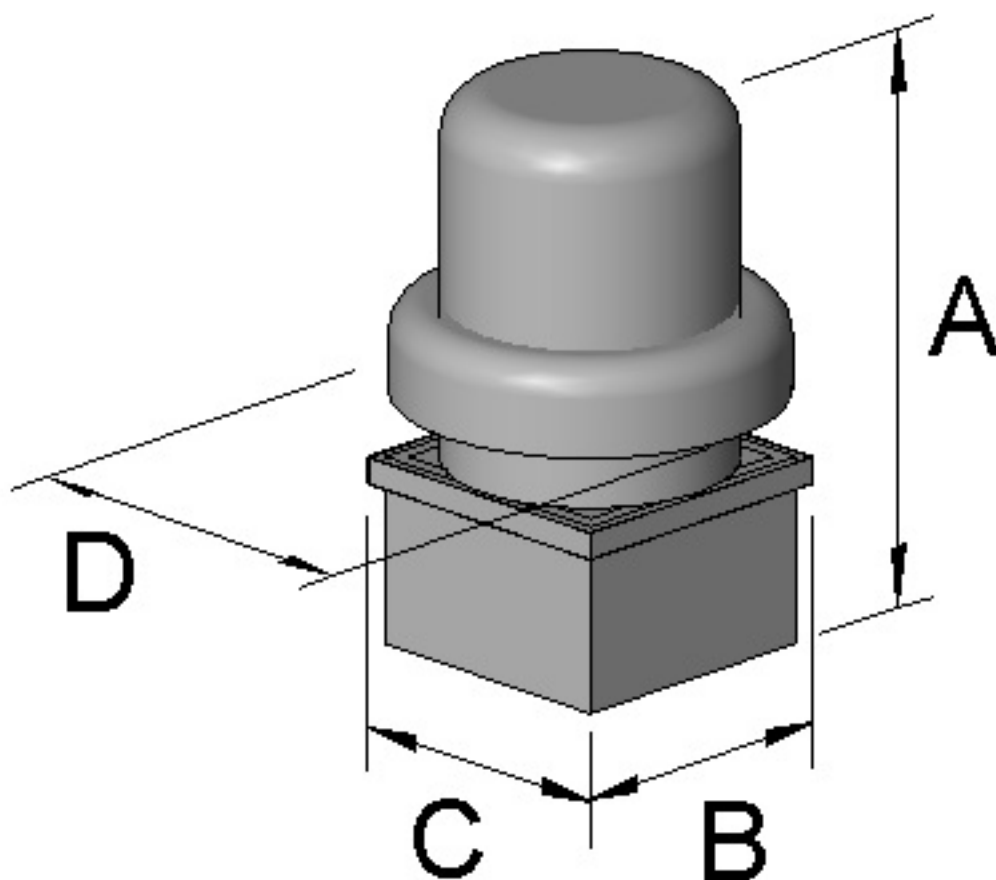
	Octave Bands (hz)								LwA	dBA	Sones
	62.5	125	250	500	1000	2000	4000	8000			
Inlet	75	76	73	67	60	59	53	47	69	58	9.0



Greenheck Fan Corporation certifies that the model shown herein is licensed to bear the AMCA Seal. The ratings shown are based on tests and procedures performed in accordance with AMCA Publication 211 and AMCA Publication 311 and comply with the requirements of the AMCA Certified Ratings Program. The AMCA certified ratings seal applies to sound and air performance ratings only. Performance certified is for installation type A: Free inlet, free outlet. Power rating does not include transmission losses. Performance ratings include the effects of birdscreen. The sound ratings shown are loudness values in hemispherical sones at 1.5 m (5 ft) in a hemispherical free field calculated per ANSI/AMCA Standard 301. Values shown are for Installation Type A: free inlet hemispherical sone levels. dBA levels are not licensed by AMCA International. The AMCA Certified Ratings Seal for Sound applies to inlet sone ratings only.

FLA - based on tables 150 or 148 of National Electric Code 2002. Actual motor FLA may vary, for sizing thermal overload, consult factory.

Dimensions and Weights		
Label	Value	Description
-	54	Weight w/o accessories (lbs)
A	36	Overall Height (in)
D	28	Overall Width (in)
B	22	Curb Cap Width (in)
C	22	Curb Cap Length (in)
-	16	Duct / Damper Width (in)
-	16	Duct / Damper Length (in)
-	18.5	Roof Opening Width (in)
-	18.5	Roof Opening Length (in)



\*All dimensions are in inches.

# Model: G-203-VG

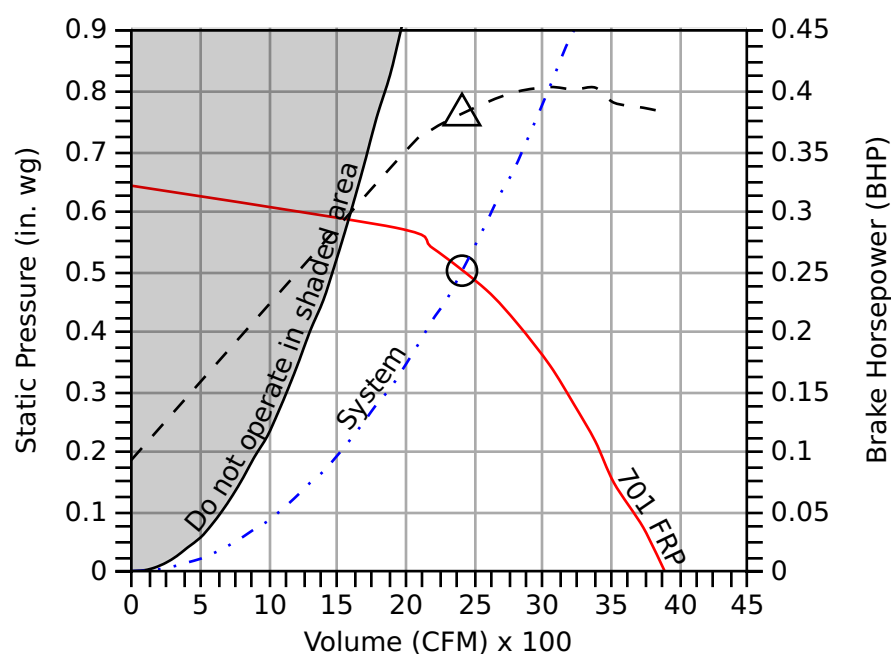
## Direct Drive Centrifugal Roof Exhaust Fan

**Standard Construction Features:** Aluminum housing. Centrifugal backward inclined aluminum (composite for sizes 60-95) wheel. Direct driven motor mounted on vibration isolation.

Fan Configuration	
Drive type	Direct

Performance	
Requested Volume (CFM)	2,405
Actual Volume (CFM)	2,405
Total External SP (in. wg)	0.5
Fan RPM	701
Operating Power (bhp)	0.38
Startup Power (bhp)	0.38
Air Stream Temp (F)	70
Start-up Temp (F)	70
Air Density (lbs/ft <sup>3</sup> )	0.072
Elevation (ft)	1000
Static Efficiency (%)	50
Outlet Velocity (ft/min)	1,006

Motor	
Size (hp)	1
V/C/P	115/60/1



- Fan curve
- - - Brake horsepower curve
- Operating Point SP
- △ Operating Bhp point
- Max system curve
- . . - System curve

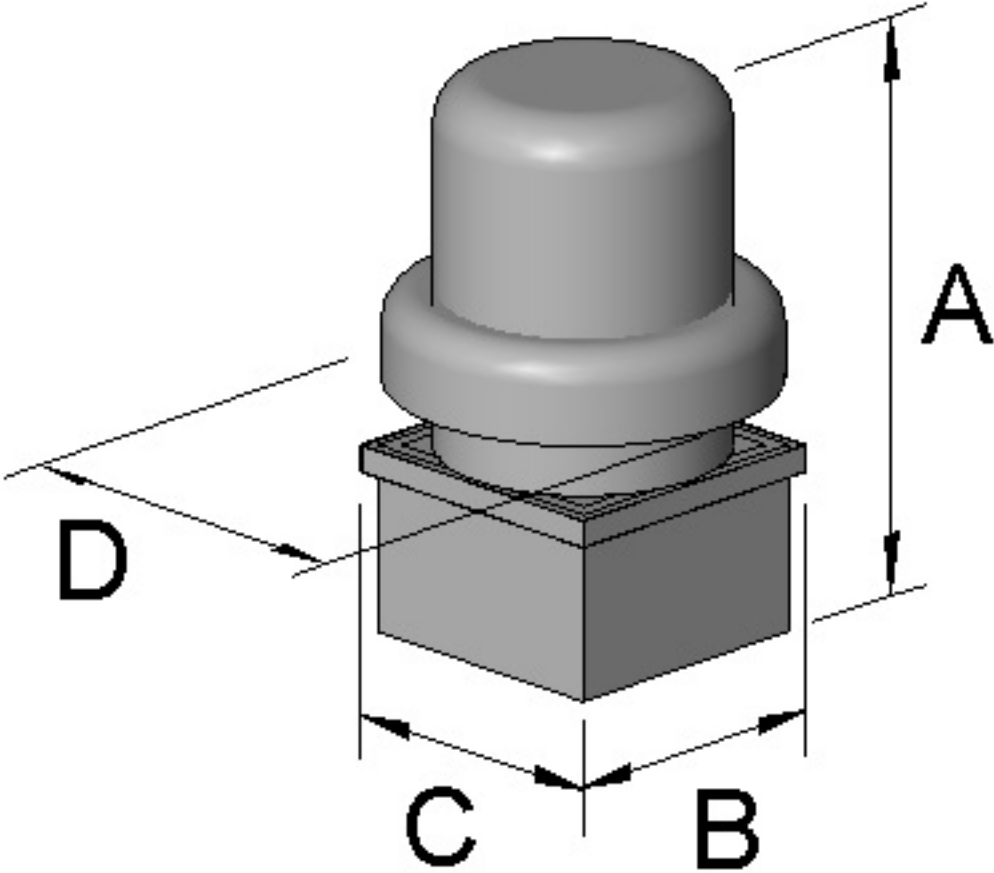
## Sound

	Octave Bands (hz)								LwA	dBA	Sones
	62.5	125	250	500	1000	2000	4000	8000			
Inlet	76	75	67	62	57	56	52	45	66	54	7.7



Greenheck Fan Corporation certifies that the model shown herein is licensed to bear the AMCA Seal. The ratings shown are based on tests and procedures performed in accordance with AMCA Publication 211 and AMCA Publication 311 and comply with the requirements of the AMCA Certified Ratings Program. The AMCA certified ratings seal applies to sound and air performance ratings only. Performance certified is for installation type A: Free inlet, free outlet. Power rating does not include transmission losses. Performance ratings include the effects of birdscreen. The sound ratings shown are loudness values in hemispherical sones at 1.5 m (5 ft) in a hemispherical free field calculated per ANSI/AMCA Standard 301. Values shown are for Installation Type A: free inlet hemispherical sone levels. dBA levels are not licensed by AMCA International. The AMCA Certified Ratings Seal for Sound applies to inlet sone ratings only.

Dimensions and Weights		
Label	Value	Description
-	94	Weight w/o accessories (lbs)
A	40	Overall Height (in)
D	36	Overall Width (in)
B	30	Curb Cap Width (in)
C	30	Curb Cap Length (in)
-	18	Duct / Damper Width (in)
-	18	Duct / Damper Length (in)
-	20.5	Roof Opening Width (in)
-	20.5	Roof Opening Length (in)



\*All dimensions are in inches.

# Model: G-143-VG

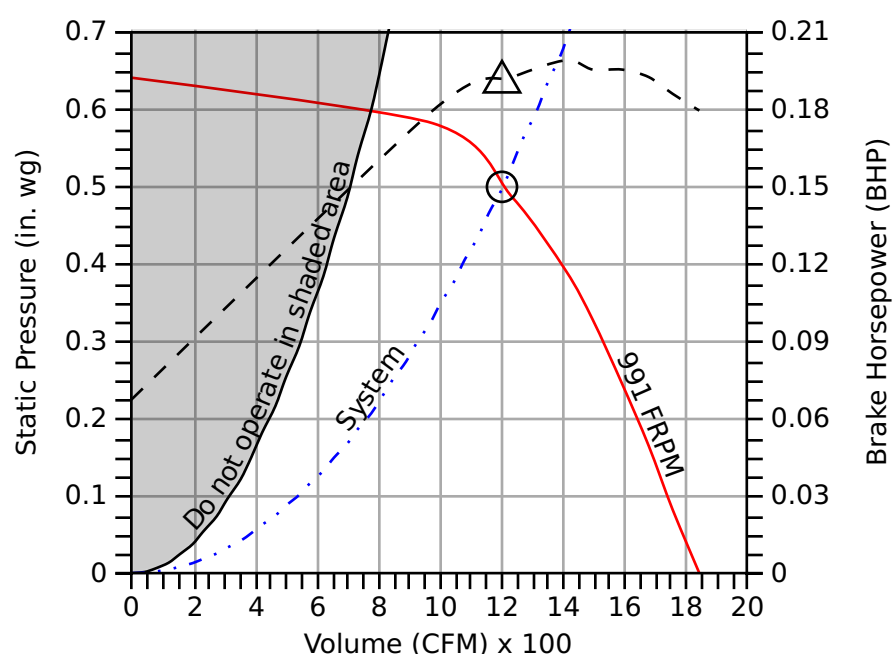
## Direct Drive Centrifugal Roof Exhaust Fan

**Standard Construction Features:** Aluminum housing. Centrifugal backward inclined aluminum (composite for sizes 60-95) wheel. Direct driven motor mounted on vibration isolation.

Fan Configuration	
Drive type	Direct

Performance	
Requested Volume (CFM)	1,200
Actual Volume (CFM)	1,200
Total External SP (in. wg)	0.5
Fan RPM	991
Operating Power (bhp)	0.19
Startup Power (bhp)	0.19
Air Stream Temp (F)	70
Start-up Temp (F)	70
Air Density (lbs/ft <sup>3</sup> )	0.072
Elevation (ft)	1000
Static Efficiency (%)	49
Outlet Velocity (ft/min)	909

Motor	
Size (hp)	1/2
V/C/P	115/60/1
NEC FLA (Amps)	6.7



- Fan curve
- - - Brake horsepower curve
- Operating Point SP
- △ Operating Bhp point
- Max system curve
- . . - System curve

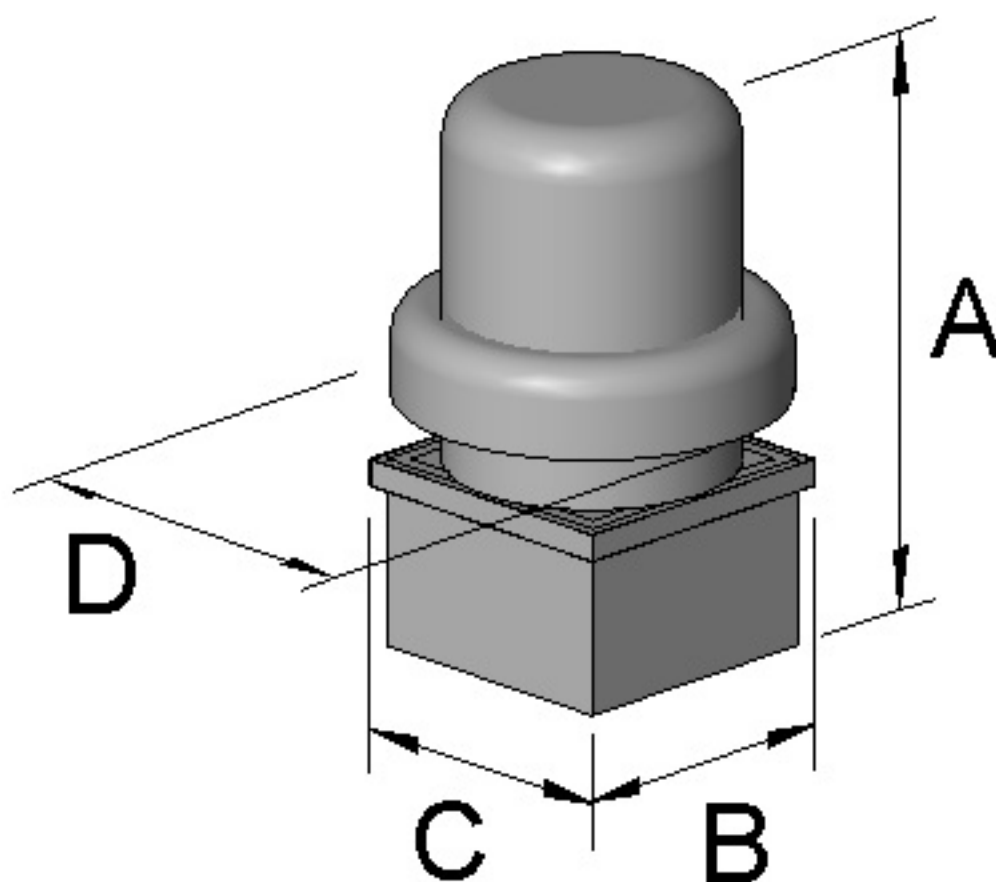
## Sound

	Octave Bands (hz)								LwA	dBA	Sones
	62.5	125	250	500	1000	2000	4000	8000			
Inlet	72	75	69	62	56	53	48	41	66	54	7.2



Greenheck Fan Corporation certifies that the model shown herein is licensed to bear the AMCA Seal. The ratings shown are based on tests and procedures performed in accordance with AMCA Publication 211 and AMCA Publication 311 and comply with the requirements of the AMCA Certified Ratings Program. The AMCA certified ratings seal applies to sound and air performance ratings only. Performance certified is for installation type A: Free inlet, free outlet. Power rating does not include transmission losses. Performance ratings include the effects of birdscreen. The sound ratings shown are loudness values in hemispherical sones at 1.5 m (5 ft) in a hemispherical free field calculated per ANSI/AMCA Standard 301. Values shown are for Installation Type A: free inlet hemispherical sone levels. dBA levels are not licensed by AMCA International. The AMCA Certified Ratings Seal for Sound applies to inlet sone ratings only.

Dimensions and Weights		
Label	Value	Description
-	54	Weight w/o accessories (lbs)
A	36	Overall Height (in)
D	28	Overall Width (in)
B	22	Curb Cap Width (in)
C	22	Curb Cap Length (in)
-	16	Duct / Damper Width (in)
-	16	Duct / Damper Length (in)
-	18.5	Roof Opening Width (in)
-	18.5	Roof Opening Length (in)



\*All dimensions are in inches.

# Model: G-203-VG

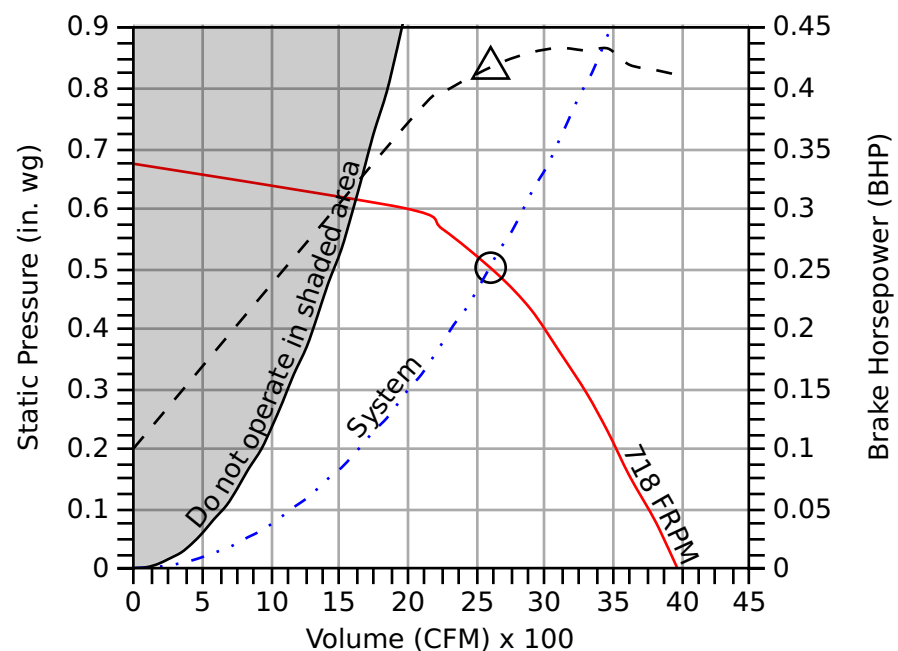
## Direct Drive Centrifugal Roof Exhaust Fan

**Standard Construction Features:** Aluminum housing. Centrifugal backward inclined aluminum (composite for sizes 60-95) wheel. Direct driven motor mounted on vibration isolation.

Fan Configuration	
Drive type	Direct

Performance	
Requested Volume (CFM)	2,600
Actual Volume (CFM)	2,600
Total External SP (in. wg)	0.5
Fan RPM	718
Operating Power (bhp)	0.42
Startup Power (bhp)	0.42
Air Stream Temp (F)	70
Start-up Temp (F)	70
Air Density (lbs/ft <sup>3</sup> )	0.072
Elevation (ft)	1000
Static Efficiency (%)	49
Outlet Velocity (ft/min)	1,088

Motor	
Size (hp)	1
V/C/P	115/60/1



- Fan curve
- - - Brake horsepower curve
- Operating Point SP
- △ Operating Bhp point
- Max system curve
- . . - System curve

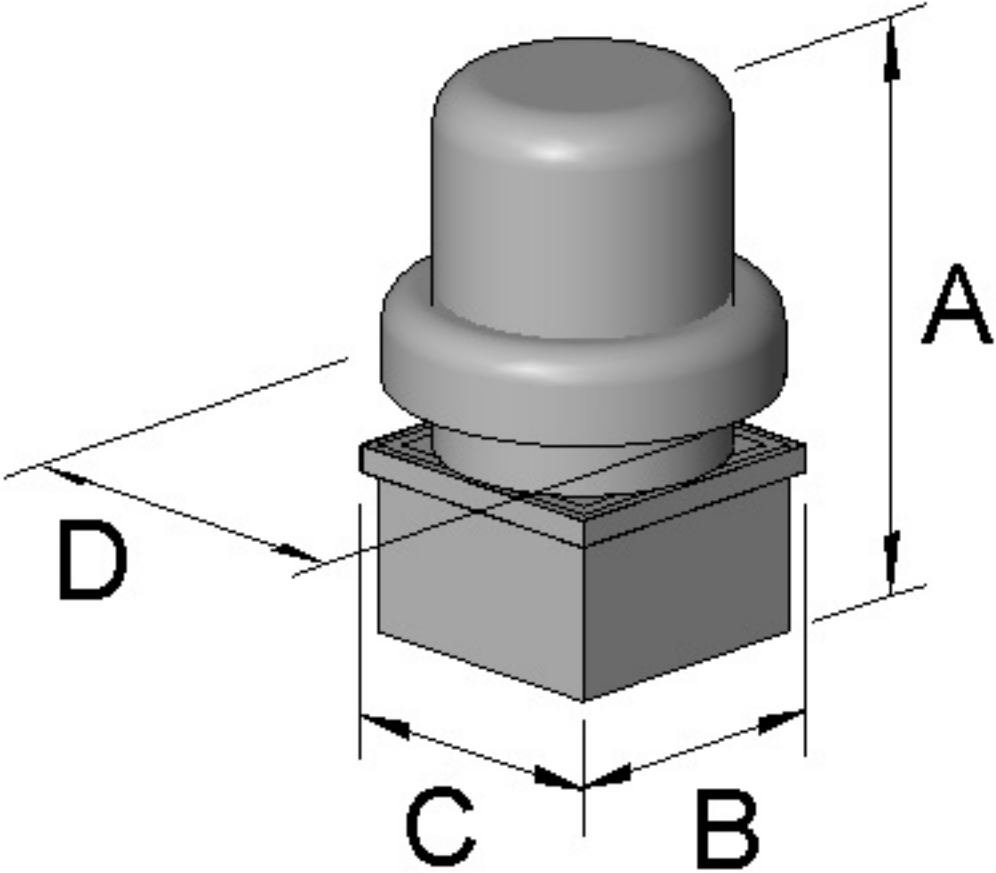
## Sound

	Octave Bands (hz)								LwA	dBA	Sones
	62.5	125	250	500	1000	2000	4000	8000			
Inlet	76	76	69	64	58	57	53	46	67	55	8.3



Greenheck Fan Corporation certifies that the model shown herein is licensed to bear the AMCA Seal. The ratings shown are based on tests and procedures performed in accordance with AMCA Publication 211 and AMCA Publication 311 and comply with the requirements of the AMCA Certified Ratings Program. The AMCA certified ratings seal applies to sound and air performance ratings only. Performance certified is for installation type A: Free inlet, free outlet. Power rating does not include transmission losses. Performance ratings include the effects of birdscreen. The sound ratings shown are loudness values in hemispherical sones at 1.5 m (5 ft) in a hemispherical free field calculated per ANSI/AMCA Standard 301. Values shown are for Installation Type A: free inlet hemispherical sone levels. dBA levels are not licensed by AMCA International. The AMCA Certified Ratings Seal for Sound applies to inlet sone ratings only.

Dimensions and Weights		
Label	Value	Description
-	94	Weight w/o accessories (lbs)
A	40	Overall Height (in)
D	36	Overall Width (in)
B	30	Curb Cap Width (in)
C	30	Curb Cap Length (in)
-	18	Duct / Damper Width (in)
-	18	Duct / Damper Length (in)
-	20.5	Roof Opening Width (in)
-	20.5	Roof Opening Length (in)



\*All dimensions are in inches.

# Model: G-070-VG

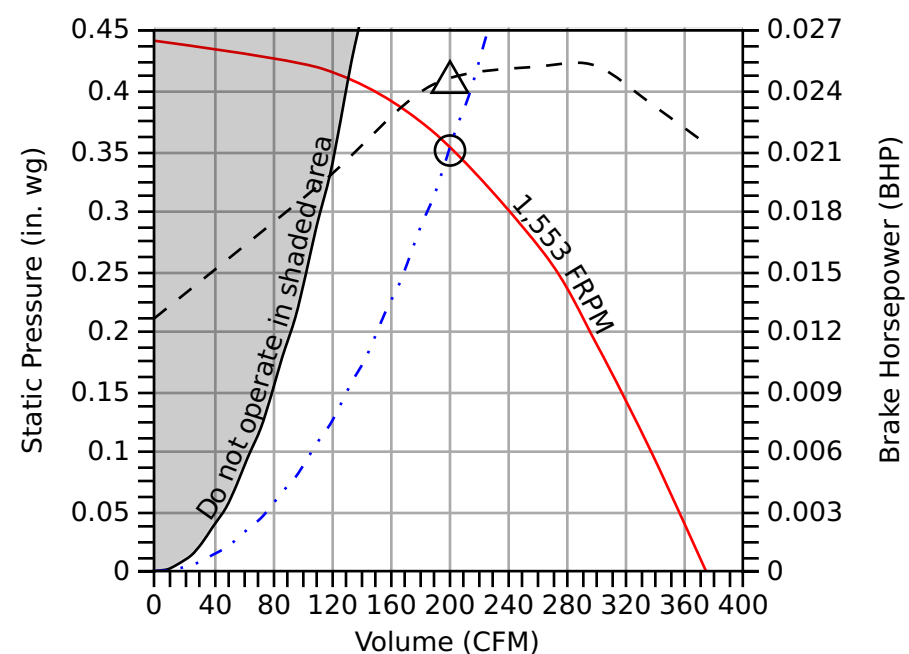
## Direct Drive Centrifugal Roof Exhaust Fan

**Standard Construction Features:** Aluminum housing. Centrifugal backward inclined aluminum (composite for sizes 60-95) wheel. Direct driven motor mounted on vibration isolation.

Fan Configuration	
Drive type	Direct

Performance	
Requested Volume (CFM)	200
Actual Volume (CFM)	200
Total External SP (in. wg)	0.35
Fan RPM	1,553
Operating Power (bhp)	0.02
Startup Power (bhp)	0.02
Air Stream Temp (F)	70
Start-up Temp (F)	70
Air Density (lbs/ft <sup>3</sup> )	0.072
Elevation (ft)	1000
Static Efficiency (%)	45
Outlet Velocity (ft/min)	513

Motor	
Size (hp)	1/15
V/C/P	115/60/1



- Fan curve
- - - Brake horsepower curve
- Operating Point SP
- △ Operating Bhp point
- Max system curve
- ... System curve

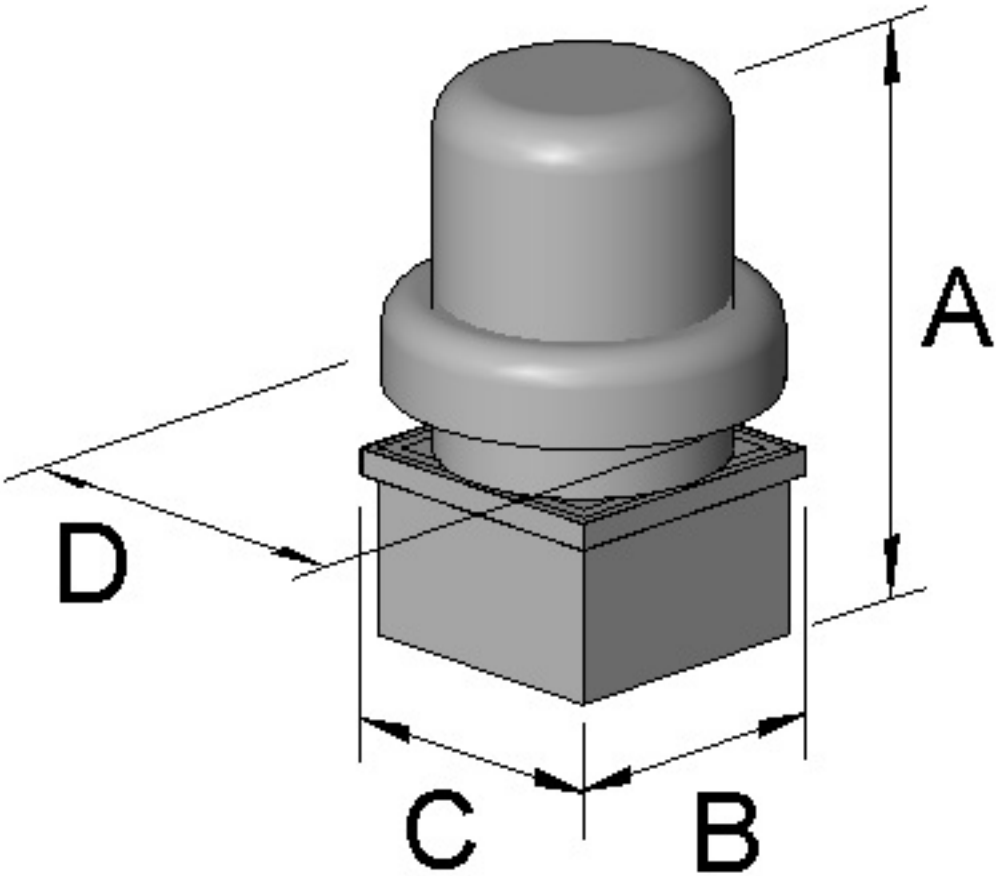
## Sound

	Octave Bands (hz)								LwA	dBA	Sones
	62.5	125	250	500	1000	2000	4000	8000			
Inlet	67	68	64	50	45	43	39	34	58	47	4.4



Greenheck Fan Corporation certifies that the model shown herein is licensed to bear the AMCA Seal. The ratings shown are based on tests and procedures performed in accordance with AMCA Publication 211 and AMCA Publication 311 and comply with the requirements of the AMCA Certified Ratings Program. The AMCA certified ratings seal applies to sound and air performance ratings only. Performance certified is for installation type A: Free inlet, free outlet. Power rating does not include transmission losses. Performance ratings include the effects of birdscreen. The sound ratings shown are loudness values in hemispherical sones at 1.5 m (5 ft) in a hemispherical free field calculated per ANSI/AMCA Standard 301. Values shown are for Installation Type A: free inlet hemispherical sone levels. dBA levels are not licensed by AMCA International. The AMCA Certified Ratings Seal for Sound applies to inlet sone ratings only.

Dimensions and Weights		
Label	Value	Description
-	20	Weight w/o accessories (lbs)
A	24	Overall Height (in)
D	19	Overall Width (in)
B	17	Curb Cap Width (in)
C	17	Curb Cap Length (in)
-	8	Duct / Damper Width (in)
-	8	Duct / Damper Length (in)
-	10.5	Roof Opening Width (in)
-	10.5	Roof Opening Length (in)



\*All dimensions are in inches.

# Model: G-133-VG

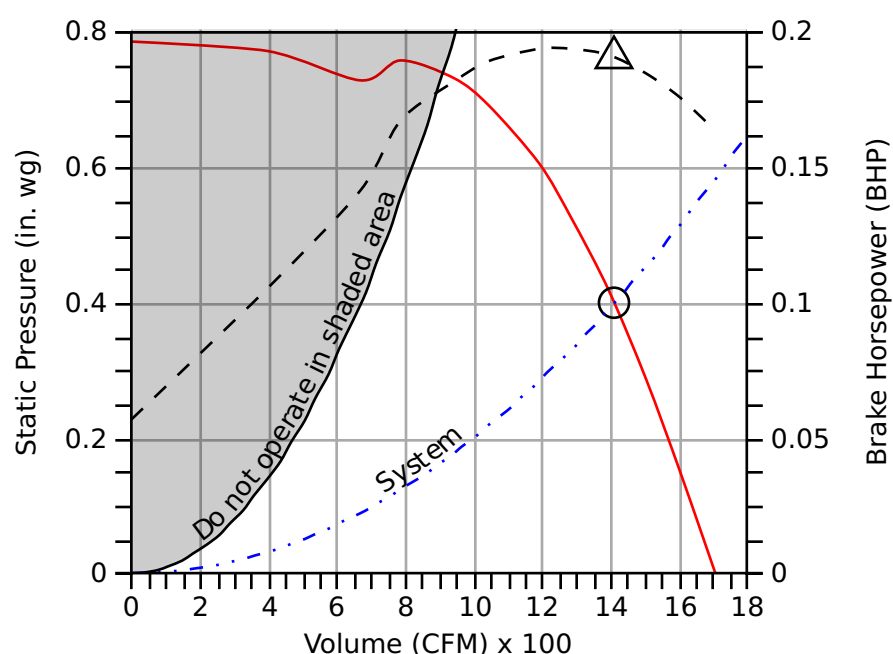
## Direct Drive Centrifugal Roof Exhaust Fan

**Standard Construction Features:** Aluminum housing. Centrifugal backward inclined aluminum (composite for sizes 60-95) wheel. Direct driven motor mounted on vibration isolation.

Fan Configuration	
Drive type	Direct

Performance	
Requested Volume (CFM)	1,410
Actual Volume (CFM)	1,410
Total External SP (in. wg)	0.4
Fan RPM	1,200
Operating Power (bhp)	0.19
Startup Power (bhp)	0.19
Air Stream Temp (F)	70
Start-up Temp (F)	70
Air Density (lbs/ft <sup>3</sup> )	0.072
Elevation (ft)	1000
Static Efficiency (%)	47
Outlet Velocity (ft/min)	1,259

Motor	
Size (hp)	1/2
V/C/P	115/60/1
NEC FLA (Amps)	6.7



- Fan curve
- - - Brake horsepower curve
- Operating Point SP
- △ Operating Bhp point
- Max system curve
- . . - System curve

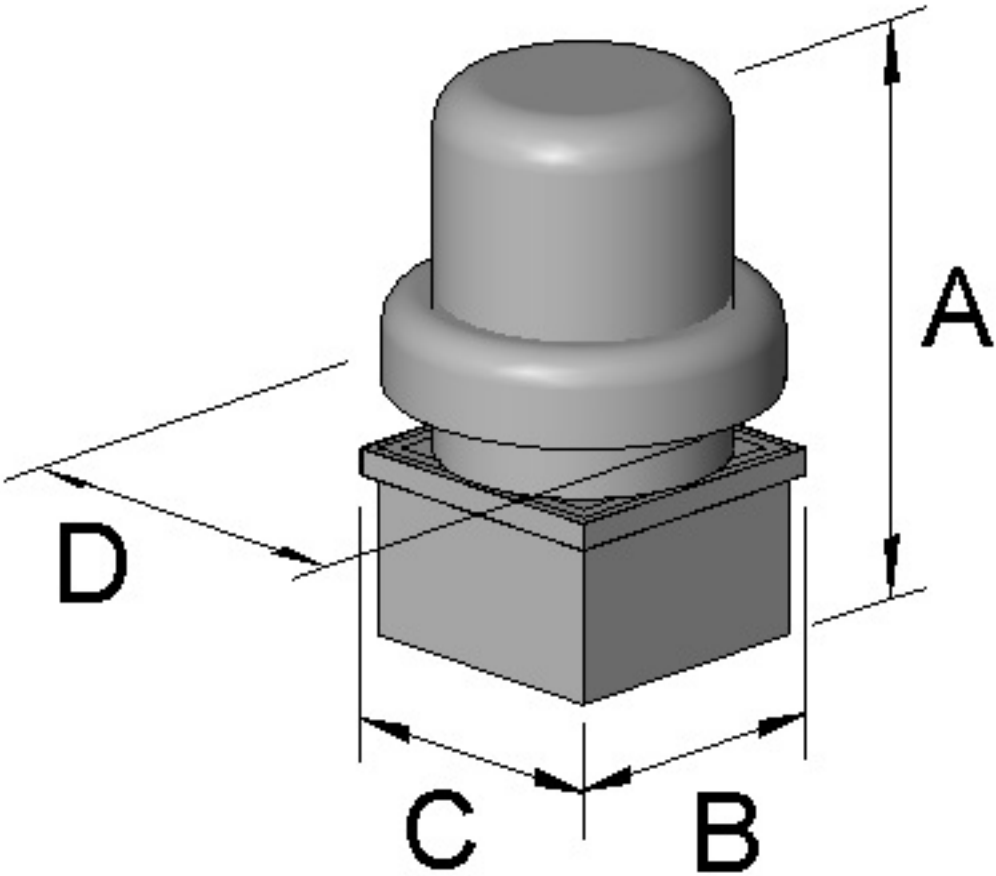
## Sound

	Octave Bands (hz)								LwA	dBA	Sones
	62.5	125	250	500	1000	2000	4000	8000			
Inlet	73	73	75	68	64	62	55	49	71	60	9.9



Greenheck Fan Corporation certifies that the model shown herein is licensed to bear the AMCA Seal. The ratings shown are based on tests and procedures performed in accordance with AMCA Publication 211 and AMCA Publication 311 and comply with the requirements of the AMCA Certified Ratings Program. The AMCA certified ratings seal applies to sound and air performance ratings only. Performance certified is for installation type A: Free inlet, free outlet. Power rating does not include transmission losses. Performance ratings include the effects of birdscreen. The sound ratings shown are loudness values in hemispherical sones at 1.5 m (5 ft) in a hemispherical free field calculated per ANSI/AMCA Standard 301. Values shown are for Installation Type A: free inlet hemispherical sone levels. dBA levels are not licensed by AMCA International. The AMCA Certified Ratings Seal for Sound applies to inlet sone ratings only.

Dimensions and Weights		
Label	Value	Description
-	49	Weight w/o accessories (lbs)
A	36	Overall Height (in)
D	28	Overall Width (in)
B	19	Curb Cap Width (in)
C	19	Curb Cap Length (in)
-	12	Duct / Damper Width (in)
-	12	Duct / Damper Length (in)
-	14.5	Roof Opening Width (in)
-	14.5	Roof Opening Length (in)



\*All dimensions are in inches.

# Model: G-133-VG

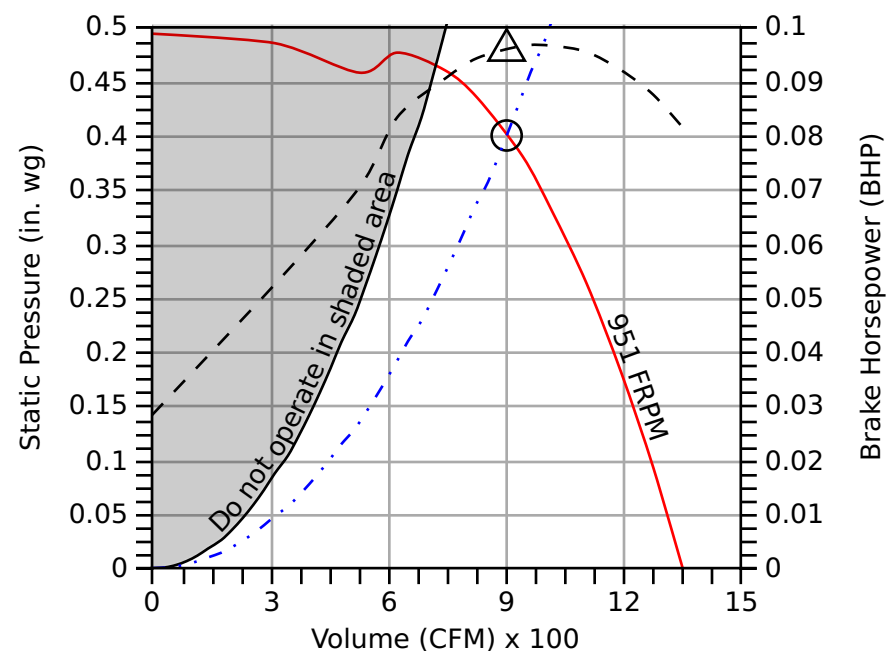
## Direct Drive Centrifugal Roof Exhaust Fan

**Standard Construction Features:** Aluminum housing. Centrifugal backward inclined aluminum (composite for sizes 60-95) wheel. Direct driven motor mounted on vibration isolation.

Fan Configuration	
Drive type	Direct

Performance	
Requested Volume (CFM)	900
Actual Volume (CFM)	900
Total External SP (in. wg)	0.4
Fan RPM	951
Operating Power (bhp)	0.1
Startup Power (bhp)	0.1
Air Stream Temp (F)	70
Start-up Temp (F)	70
Air Density (lbs/ft <sup>3</sup> )	0.072
Elevation (ft)	1000
Static Efficiency (%)	59
Outlet Velocity (ft/min)	804

Motor	
Size (hp)	1/4
V/C/P	115/60/1
NEC FLA (Amps)	3.7



- Fan curve
- - - Brake horsepower curve
- Operating Point SP
- △ Operating Bhp point
- Max system curve
- ... System curve

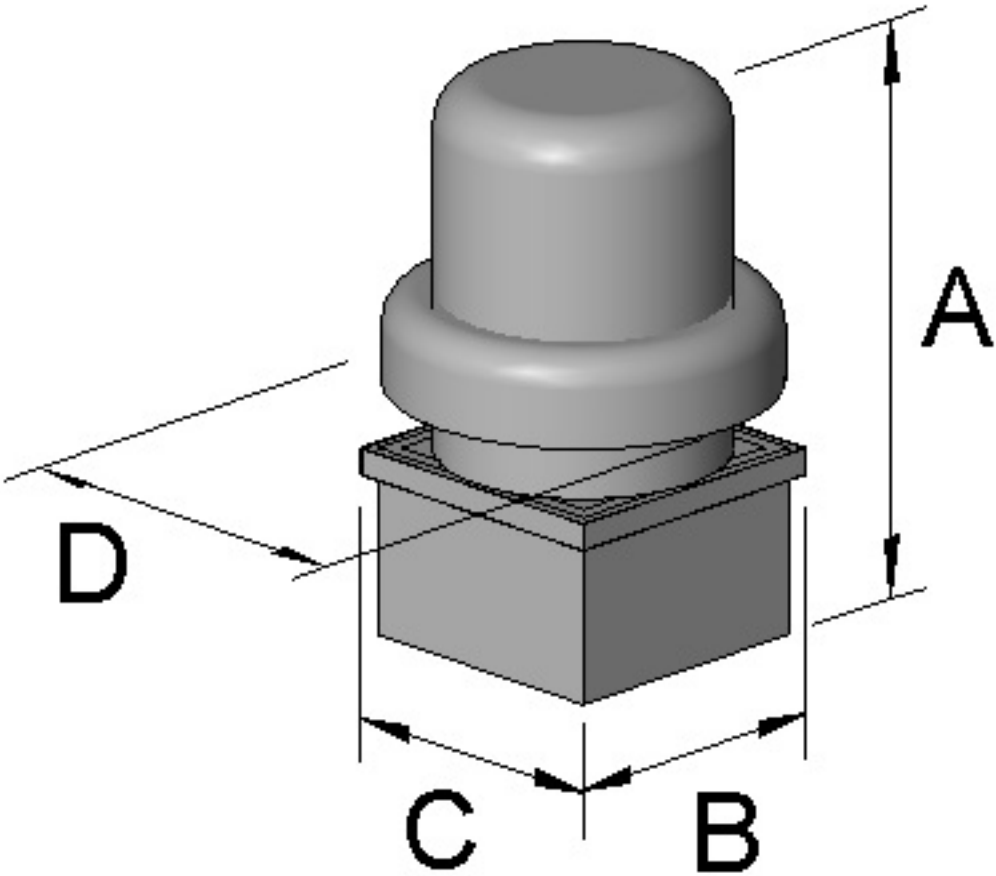
## Sound

	Octave Bands (hz)								LwA	dBA	Sones
	62.5	125	250	500	1000	2000	4000	8000			
Inlet	71	70	67	63	59	57	48	42	65	54	6.7



Greenheck Fan Corporation certifies that the model shown herein is licensed to bear the AMCA Seal. The ratings shown are based on tests and procedures performed in accordance with AMCA Publication 211 and AMCA Publication 311 and comply with the requirements of the AMCA Certified Ratings Program. The AMCA certified ratings seal applies to sound and air performance ratings only. Performance certified is for installation type A: Free inlet, free outlet. Power rating does not include transmission losses. Performance ratings include the effects of birdscreen. The sound ratings shown are loudness values in hemispherical sones at 1.5 m (5 ft) in a hemispherical free field calculated per ANSI/AMCA Standard 301. Values shown are for Installation Type A: free inlet hemispherical sone levels. dBA levels are not licensed by AMCA International. The AMCA Certified Ratings Seal for Sound applies to inlet sone ratings only.

Dimensions and Weights		
Label	Value	Description
-	44	Weight w/o accessories (lbs)
A	36	Overall Height (in)
D	28	Overall Width (in)
B	19	Curb Cap Width (in)
C	19	Curb Cap Length (in)
-	12	Duct / Damper Width (in)
-	12	Duct / Damper Length (in)
-	14.5	Roof Opening Width (in)
-	14.5	Roof Opening Length (in)



\*All dimensions are in inches.

# Model: G-123-VG

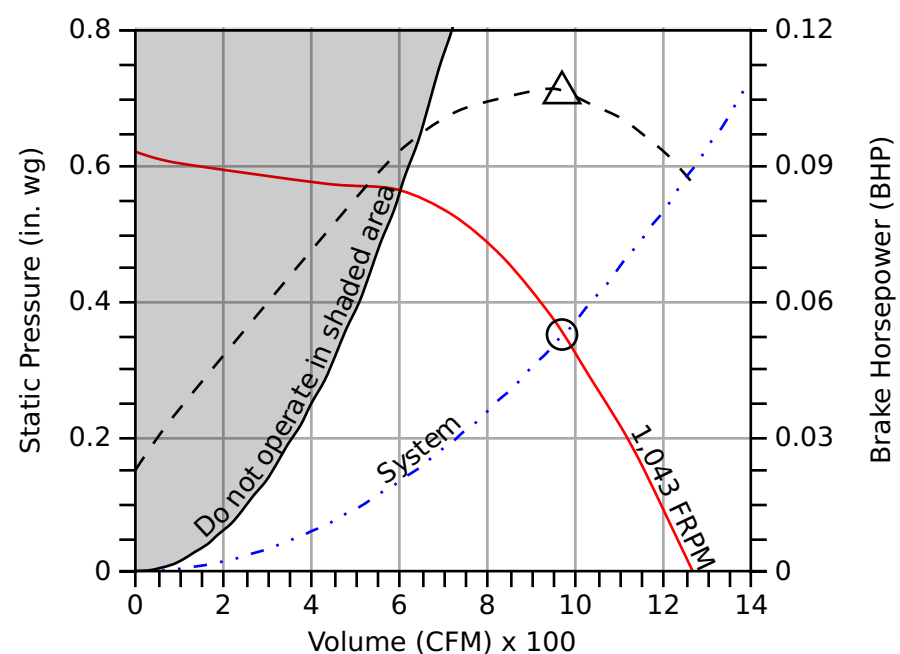
## Direct Drive Centrifugal Roof Exhaust Fan

**Standard Construction Features:** Aluminum housing. Centrifugal backward inclined aluminum (composite for sizes 60-95) wheel. Direct driven motor mounted on vibration isolation.

Fan Configuration	
Drive type	Direct

Performance	
Requested Volume (CFM)	970
Actual Volume (CFM)	970
Total External SP (in. wg)	0.35
Fan RPM	1,043
Operating Power (bhp)	0.11
Startup Power (bhp)	0.11
Air Stream Temp (F)	70
Start-up Temp (F)	70
Air Density (lbs/ft <sup>3</sup> )	0.072
Elevation (ft)	1000
Static Efficiency (%)	50
Outlet Velocity (ft/min)	1,043

Motor	
Size (hp)	1/4
V/C/P	115/60/1
NEC FLA (Amps)	3.7



- Fan curve
- - - Brake horsepower curve
- Operating Point SP
- △ Operating Bhp point
- Max system curve
- . . - System curve

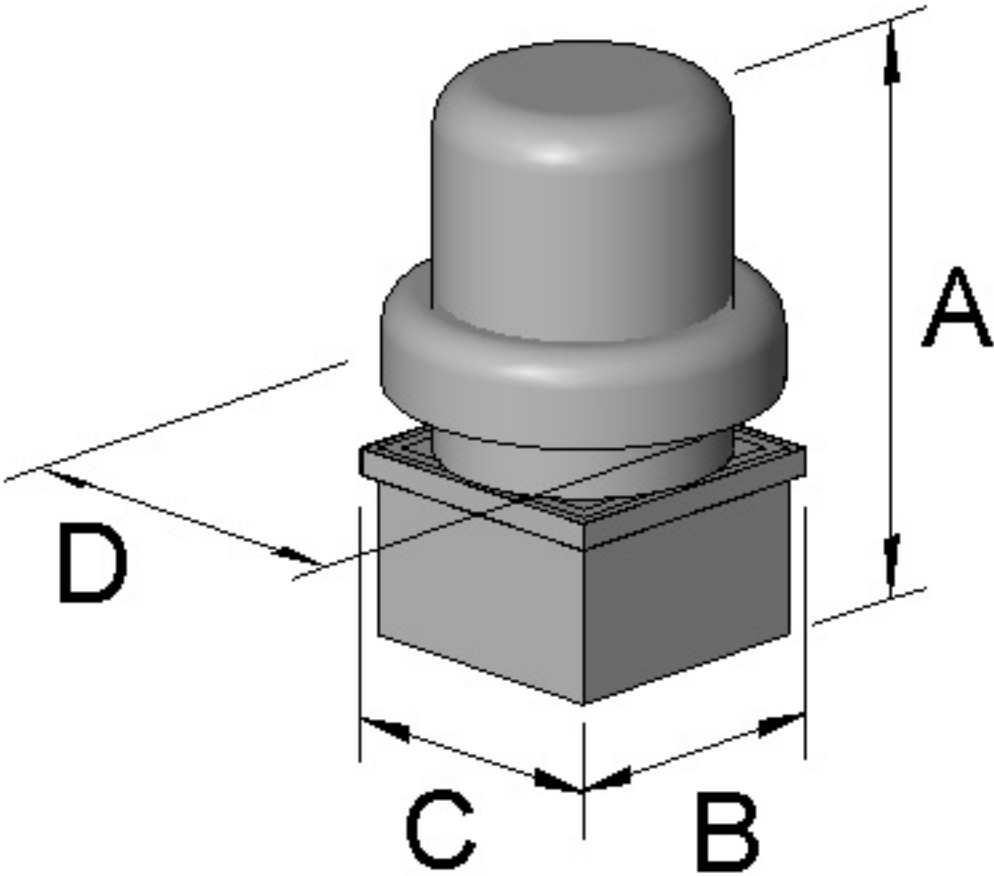
## Sound

	Octave Bands (hz)								LwA	dBA	Sones
	62.5	125	250	500	1000	2000	4000	8000			
Inlet	66	71	69	62	56	54	49	47	65	54	7.0



Greenheck Fan Corporation certifies that the model shown herein is licensed to bear the AMCA Seal. The ratings shown are based on tests and procedures performed in accordance with AMCA Publication 211 and AMCA Publication 311 and comply with the requirements of the AMCA Certified Ratings Program. The AMCA certified ratings seal applies to sound and air performance ratings only. Performance certified is for installation type A: Free inlet, free outlet. Power rating does not include transmission losses. Performance ratings include the effects of birdscreen. The sound ratings shown are loudness values in hemispherical sones at 1.5 m (5 ft) in a hemispherical free field calculated per ANSI/AMCA Standard 301. Values shown are for Installation Type A: free inlet hemispherical sone levels. dBA levels are not licensed by AMCA International. The AMCA Certified Ratings Seal for Sound applies to inlet sone ratings only.

Dimensions and Weights		
Label	Value	Description
-	43	Weight w/o accessories (lbs)
A	36	Overall Height (in)
D	24	Overall Width (in)
B	19	Curb Cap Width (in)
C	19	Curb Cap Length (in)
-	12	Duct / Damper Width (in)
-	12	Duct / Damper Length (in)
-	14.5	Roof Opening Width (in)
-	14.5	Roof Opening Length (in)



\*All dimensions are in inches.

# Model: SP-80-VG

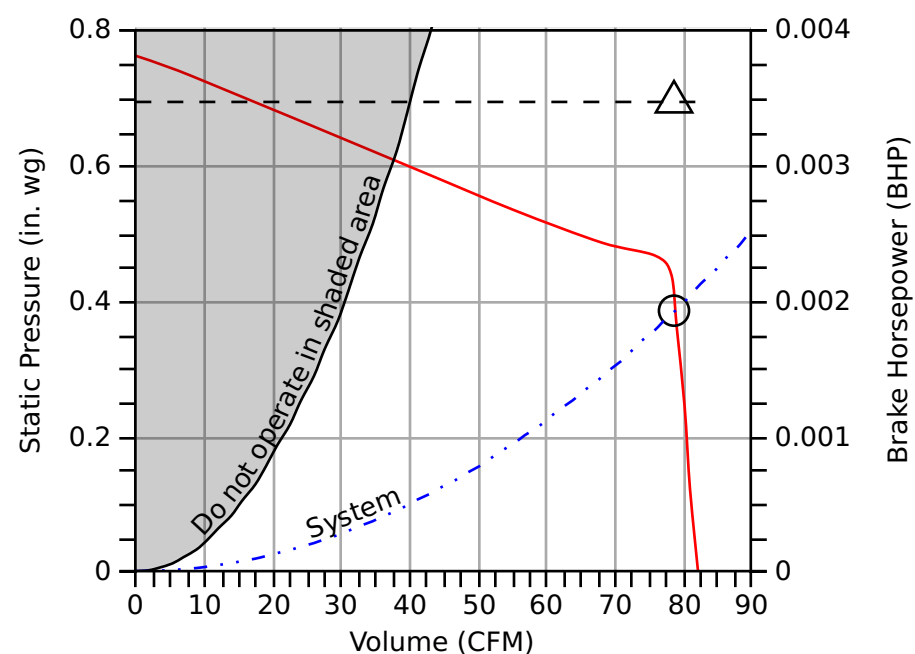
## Direct Drive Bathroom Exhaust Fan

**Standard Construction Features:** Galvanized steel housing and grille. Centrifugal forward curved wheel. Direct driven motor in the air stream.

Fan Configuration	
Drive type	Direct

Performance	
Requested Volume (CFM)	75
Actual Volume (CFM)	79
Total External SP (in. wg)	0.39
Fan RPM	935
Air Stream Temp (F)	70
Start-up Temp (F)	70
Air Density (lbs/ft <sup>3</sup> )	0.072
Elevation (ft)	1000
Watts (W)	6
Static Efficiency (%)	137
Outlet Velocity (ft/min)	414

Motor	
V/C/P	115/60/1
NEC FLA (Amps)	0.1



- Fan curve
- - - Brake horsepower curve
- Operating Point SP
- △ Operating Bhp point
- Max system curve
- . . - System curve

### Static Pressure Calculations

External SP	0.35 in. wg
Direct Drive RPM Adjustment	0.04 in. wg
<b>Total External SP</b>	<b>0.39 in. wg</b>

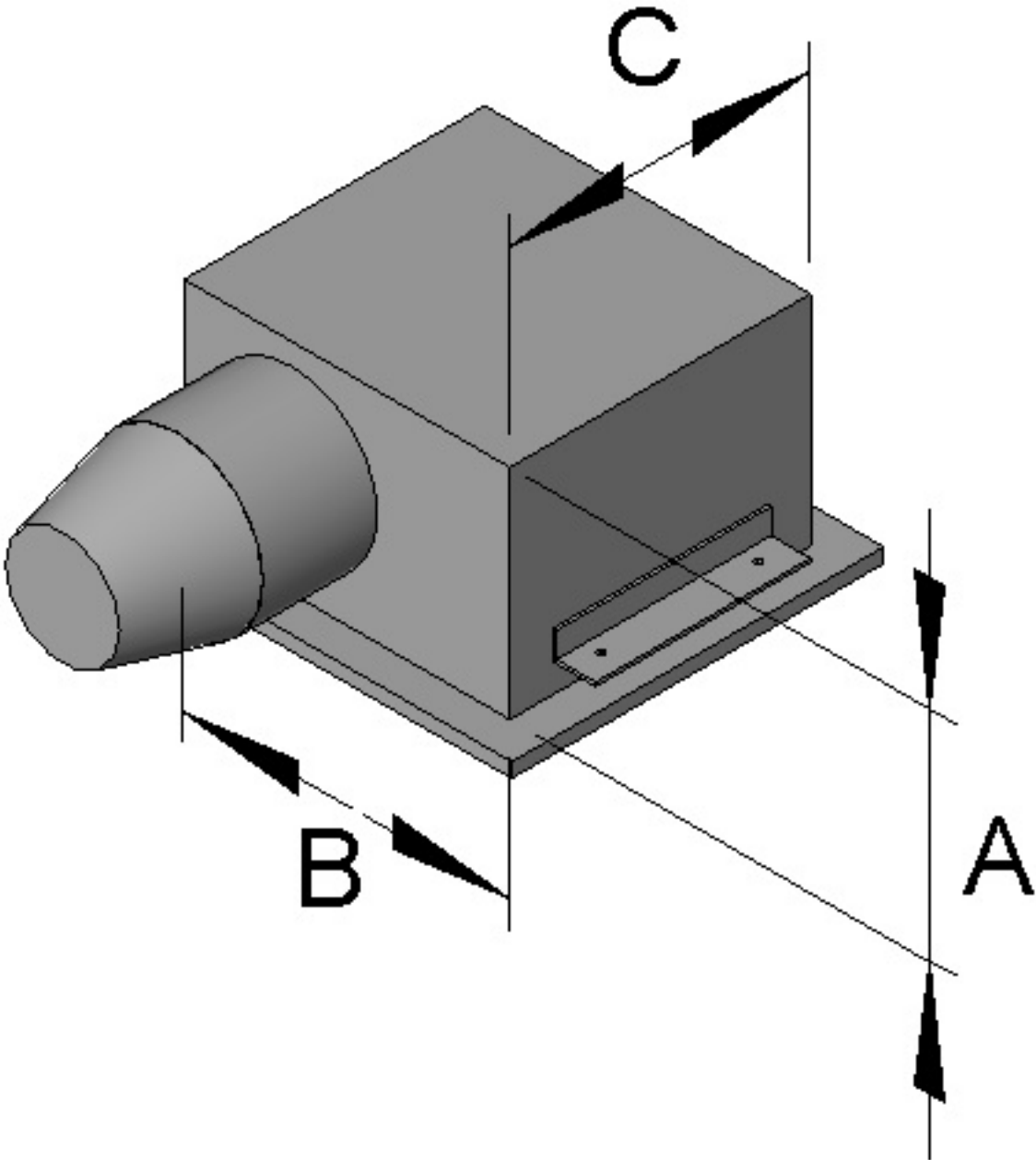
## Sound

	Octave Bands (hz)								LwA	dBA	Spherical Sones
	62.5	125	250	500	1000	2000	4000	8000			
Inlet	50	42	41	39	33	26	19	21	40	25	<0.3



Greenheck Fan Corporation certifies that the model shown herein is licensed to bear the AMCA Seal. The ratings shown are based on tests and procedures performed in accordance with AMCA Publication 211 and AMCA Publication 311 and comply with the requirements of the AMCA Certified Ratings Program. The AMCA certified ratings seal applies to sound and air performance ratings only. Performance certified is for installation type B: Free inlet, ducted outlet. Power rating does not include transmission losses. Performance ratings include the effects of an inlet grille and backdraft damper. Speed (RPM) shown is nominal. Performance is based on actual speed of test. The sound ratings shown are loudness values in spherical sones at 1.5 m (5 ft) in a spherical free field calculated per ANSI/AMCA 301. Values shown are for Installation Type B: free inlet spherical sone levels. dBA levels are not licensed by AMCA International. The AMCA Certified Ratings Seal for Sound applies to sone ratings only.

Dimensions and Weights		
Label	Value	Description
-	12	Weight w/o accessories (lbs)
A	8	Overall Height (in)
B	11	Overall Width (in)
C	11	Overall Length (in)
-	4	Outlet Diameter (in)
-	14.875	Grille Width (in)
-	13.25	Grille Length (in)



\*All dimensions are in inches.

# Model: G-143-VG

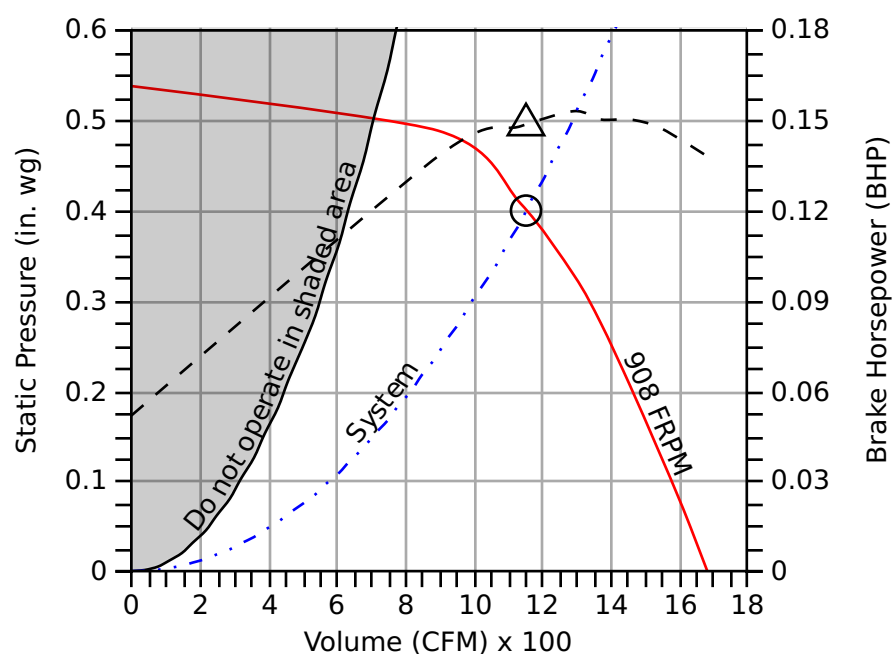
## Direct Drive Centrifugal Roof Exhaust Fan

**Standard Construction Features:** Aluminum housing. Centrifugal backward inclined aluminum (composite for sizes 60-95) wheel. Direct driven motor mounted on vibration isolation.

Fan Configuration	
Drive type	Direct

Performance	
Requested Volume (CFM)	1,150
Actual Volume (CFM)	1,150
Total External SP (in. wg)	0.4
Fan RPM	908
Operating Power (bhp)	0.15
Startup Power (bhp)	0.15
Air Stream Temp (F)	70
Start-up Temp (F)	70
Air Density (lbs/ft <sup>3</sup> )	0.072
Elevation (ft)	1000
Static Efficiency (%)	49
Outlet Velocity (ft/min)	871

Motor	
Size (hp)	1/2
V/C/P	115/60/1
NEC FLA (Amps)	6.7



- Fan curve
- - - Brake horsepower curve
- Operating Point SP
- △ Operating Bhp point
- Max system curve
- . . - System curve

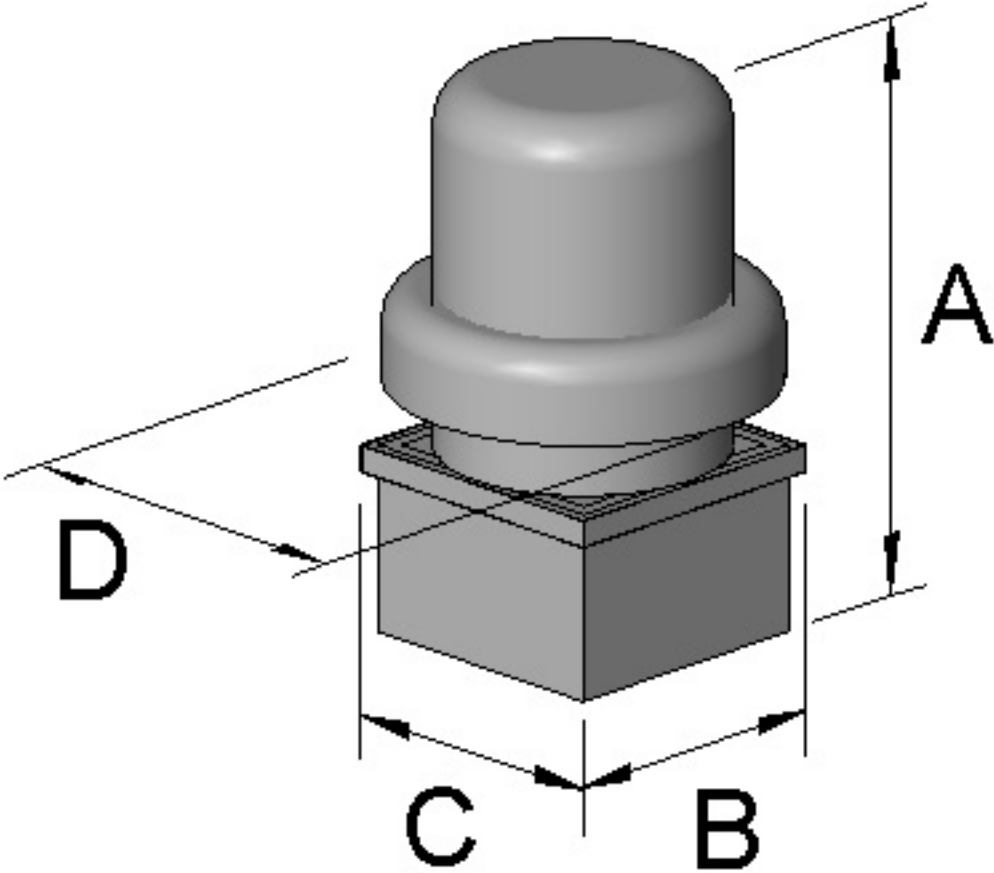
## Sound

	Octave Bands (hz)								LwA	dBA	Sones
	62.5	125	250	500	1000	2000	4000	8000			
Inlet	69	74	68	60	56	50	46	38	64	53	6.6



Greenheck Fan Corporation certifies that the model shown herein is licensed to bear the AMCA Seal. The ratings shown are based on tests and procedures performed in accordance with AMCA Publication 211 and AMCA Publication 311 and comply with the requirements of the AMCA Certified Ratings Program. The AMCA certified ratings seal applies to sound and air performance ratings only. Performance certified is for installation type A: Free inlet, free outlet. Power rating does not include transmission losses. Performance ratings include the effects of birdscreen. The sound ratings shown are loudness values in hemispherical sones at 1.5 m (5 ft) in a hemispherical free field calculated per ANSI/AMCA Standard 301. Values shown are for Installation Type A: free inlet hemispherical sone levels. dBA levels are not licensed by AMCA International. The AMCA Certified Ratings Seal for Sound applies to inlet sone ratings only.

Dimensions and Weights		
Label	Value	Description
-	54	Weight w/o accessories (lbs)
A	36	Overall Height (in)
D	28	Overall Width (in)
B	22	Curb Cap Width (in)
C	22	Curb Cap Length (in)
-	16	Duct / Damper Width (in)
-	16	Duct / Damper Length (in)
-	18.5	Roof Opening Width (in)
-	18.5	Roof Opening Length (in)



\*All dimensions are in inches.

# Model: G-080-VG

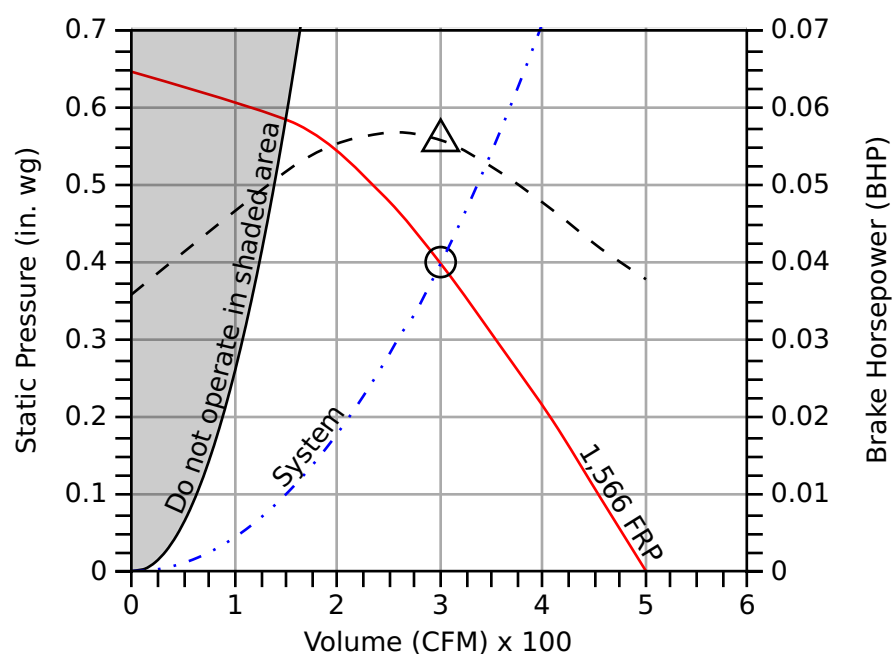
## Direct Drive Centrifugal Roof Exhaust Fan

**Standard Construction Features:** Aluminum housing. Centrifugal backward inclined aluminum (composite for sizes 60-95) wheel. Direct driven motor mounted on vibration isolation.

Fan Configuration	
Drive type	Direct

Performance	
Requested Volume (CFM)	300
Actual Volume (CFM)	300
Total External SP (in. wg)	0.4
Fan RPM	1,566
Operating Power (bhp)	0.06
Startup Power (bhp)	0.06
Air Stream Temp (F)	70
Start-up Temp (F)	70
Air Density (lbs/ft <sup>3</sup> )	0.072
Elevation (ft)	1000
Static Efficiency (%)	34
Outlet Velocity (ft/min)	750

Motor	
Size (hp)	1/10
V/C/P	115/60/1
NEC FLA (Amps)	1.38



- Fan curve
- - - Brake horsepower curve
- Operating Point SP
- △ Operating Bhp point
- Max system curve
- . . - System curve

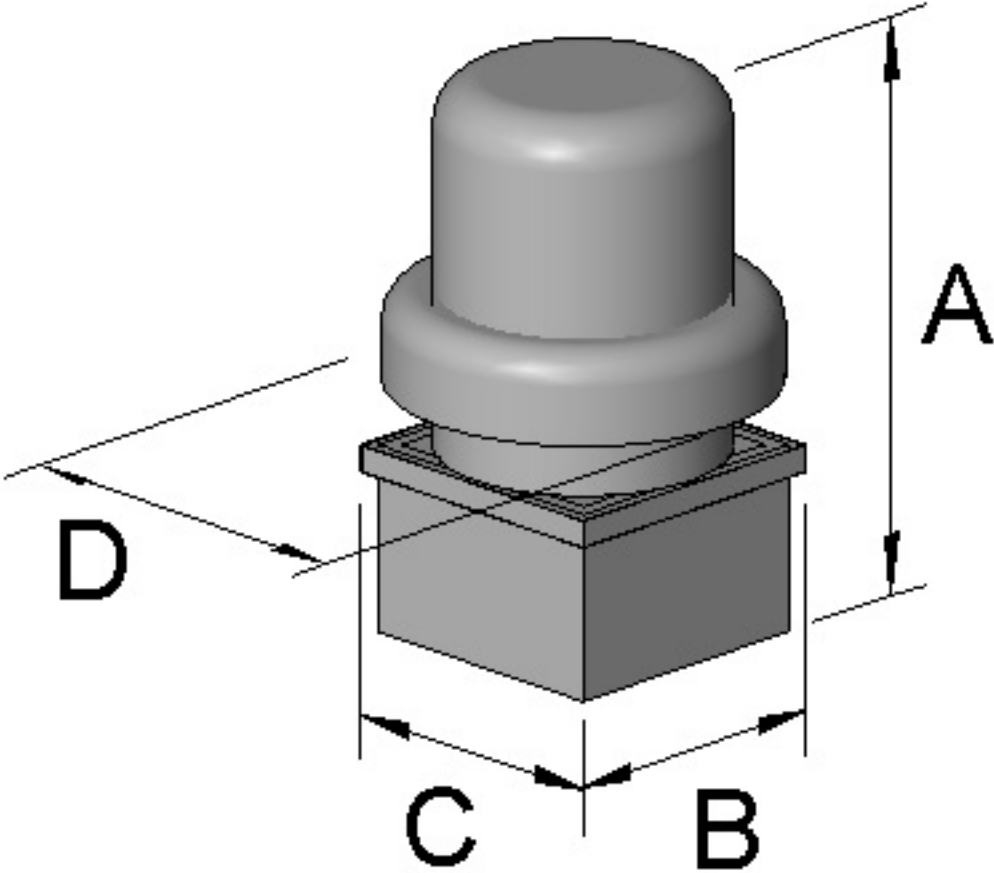
## Sound

	Octave Bands (hz)								LwA	dBA	Sones
	62.5	125	250	500	1000	2000	4000	8000			
Inlet	68	74	69	61	60	57	52	46	66	55	7.5



Greenheck Fan Corporation certifies that the model shown herein is licensed to bear the AMCA Seal. The ratings shown are based on tests and procedures performed in accordance with AMCA Publication 211 and AMCA Publication 311 and comply with the requirements of the AMCA Certified Ratings Program. The AMCA certified ratings seal applies to sound and air performance ratings only. Performance certified is for installation type A: Free inlet, free outlet. Power rating does not include transmission losses. Performance ratings include the effects of birdscreen. The sound ratings shown are loudness values in hemispherical sones at 1.5 m (5 ft) in a hemispherical free field calculated per ANSI/AMCA Standard 301. Values shown are for Installation Type A: free inlet hemispherical sone levels. dBA levels are not licensed by AMCA International. The AMCA Certified Ratings Seal for Sound applies to inlet sone ratings only.

Dimensions and Weights		
Label	Value	Description
-	28	Weight w/o accessories (lbs)
A	27	Overall Height (in)
D	22	Overall Width (in)
B	17	Curb Cap Width (in)
C	17	Curb Cap Length (in)
-	10	Duct / Damper Width (in)
-	10	Duct / Damper Length (in)
-	12.5	Roof Opening Width (in)
-	12.5	Roof Opening Length (in)



\*All dimensions are in inches.

# Model: G-143-VG

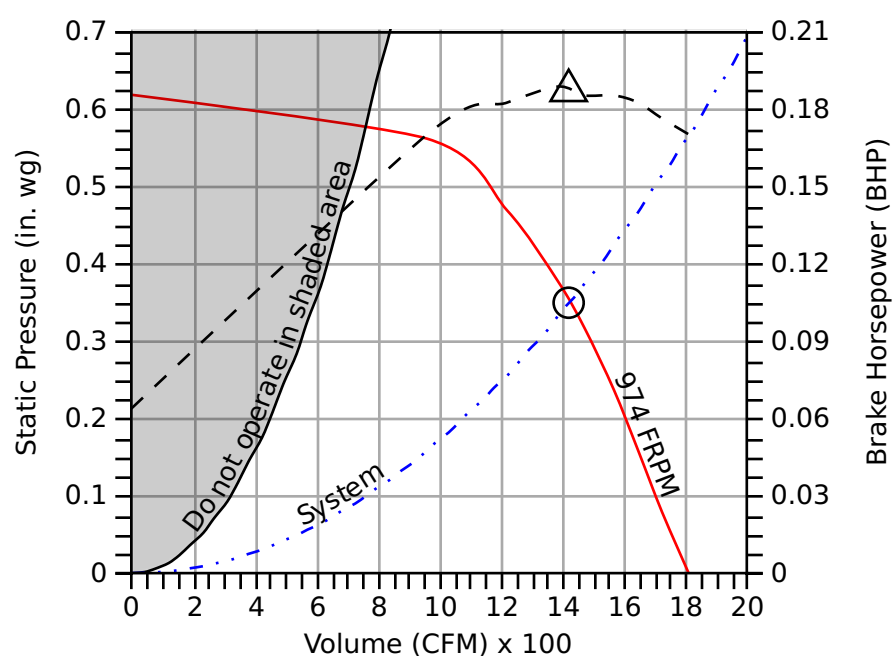
## Direct Drive Centrifugal Roof Exhaust Fan

**Standard Construction Features:** Aluminum housing. Centrifugal backward inclined aluminum (composite for sizes 60-95) wheel. Direct driven motor mounted on vibration isolation.

Fan Configuration	
Drive type	Direct

Performance	
Requested Volume (CFM)	1,420
Actual Volume (CFM)	1,420
Total External SP (in. wg)	0.35
Fan RPM	974
Operating Power (bhp)	0.19
Startup Power (bhp)	0.19
Air Stream Temp (F)	70
Start-up Temp (F)	70
Air Density (lbs/ft <sup>3</sup> )	0.072
Elevation (ft)	1000
Static Efficiency (%)	42
Outlet Velocity (ft/min)	1,076

Motor	
Size (hp)	1/2
V/C/P	115/60/1
NEC FLA (Amps)	6.7



- Fan curve
- - - Brake horsepower curve
- Operating Point SP
- △ Operating Bhp point
- Max system curve
- . . - System curve

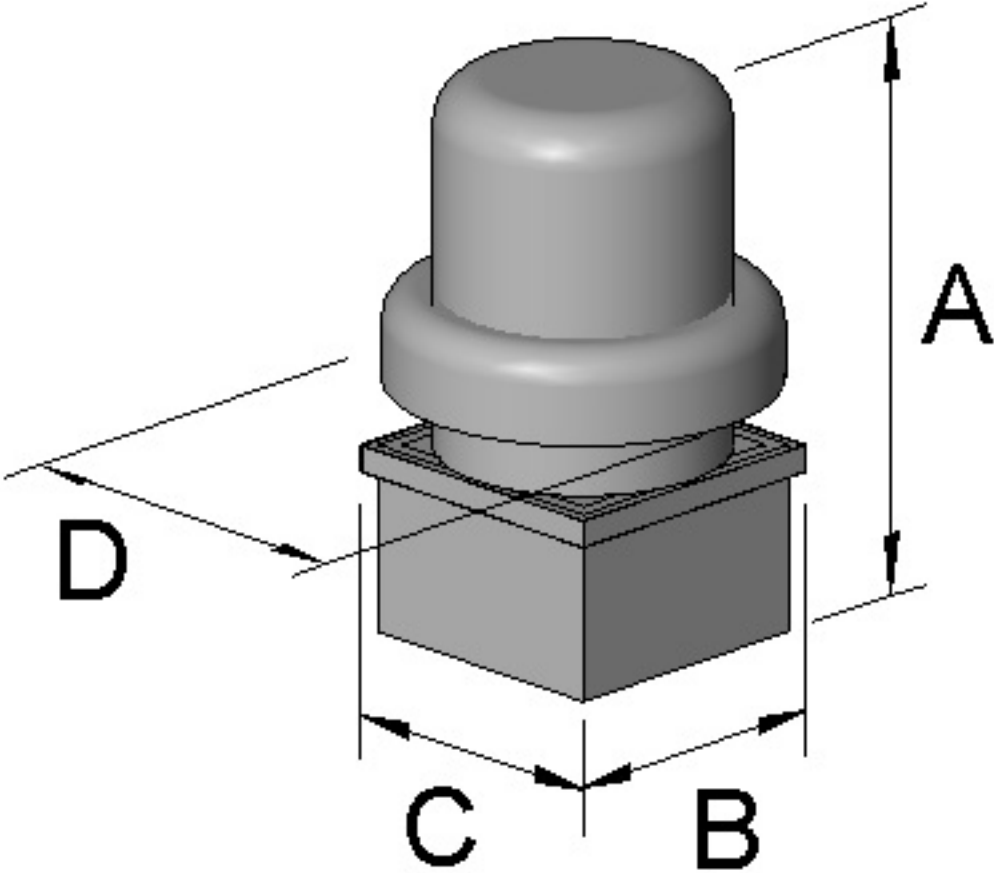
## Sound

	Octave Bands (hz)								LwA	dBA	Sones
	62.5	125	250	500	1000	2000	4000	8000			
Inlet	72	75	70	63	58	55	49	42	67	55	7.6



Greenheck Fan Corporation certifies that the model shown herein is licensed to bear the AMCA Seal. The ratings shown are based on tests and procedures performed in accordance with AMCA Publication 211 and AMCA Publication 311 and comply with the requirements of the AMCA Certified Ratings Program. The AMCA certified ratings seal applies to sound and air performance ratings only. Performance certified is for installation type A: Free inlet, free outlet. Power rating does not include transmission losses. Performance ratings include the effects of birdscreen. The sound ratings shown are loudness values in hemispherical sones at 1.5 m (5 ft) in a hemispherical free field calculated per ANSI/AMCA Standard 301. Values shown are for Installation Type A: free inlet hemispherical sone levels. dBA levels are not licensed by AMCA International. The AMCA Certified Ratings Seal for Sound applies to inlet sone ratings only.

Dimensions and Weights		
Label	Value	Description
-	54	Weight w/o accessories (lbs)
A	36	Overall Height (in)
D	28	Overall Width (in)
B	22	Curb Cap Width (in)
C	22	Curb Cap Length (in)
-	16	Duct / Damper Width (in)
-	16	Duct / Damper Length (in)
-	18.5	Roof Opening Width (in)
-	18.5	Roof Opening Length (in)



\*All dimensions are in inches.

Performance	
Quantity	1
Volume (CFM)	2,320
Total External SP (in. wg)	0.85
Operating Power (hp)	0.96
Required Power (hp)	0.96
Fan RPM	1631
Max Fan RPM	2674
Elevation (ft)	751
Start-up Temp.(F)	70
Operating Temp.(F)	70

Fan Configuration	
Construction Type	PermaLock
Size	15
Arrangement	10
Rotation	CW
Discharge Position	UB
Discharge Type	Adjustable Nozzle
Adj. Nozzle %	58
Spark Resistance	None
Scroll Material	Steel
Wheel Material	Steel
Inlet Cone Material	Steel
Pedestal Material	Steel

Equipment Weights	
Fan (LMD)(lb)	227
Motor/Drive (lb)	24
Accessories (lb)	0

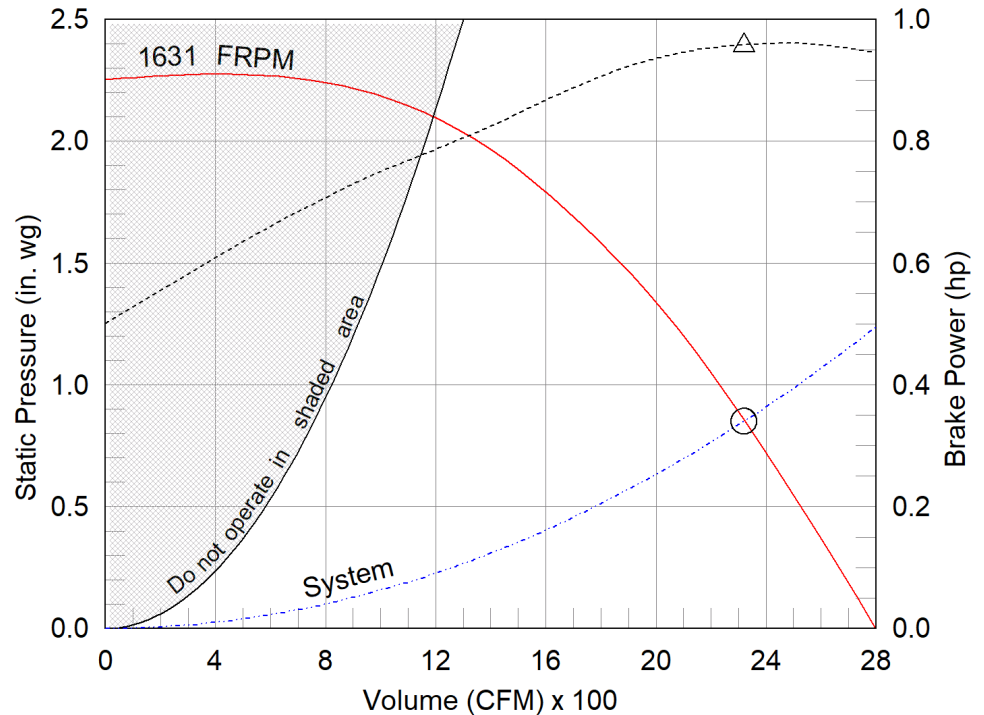
Misc Fan Data	
Outlet Velocity (ft/min)	3,093
Static Efficiency (%)	35
Tip Speed (ft/min)	6,406
Effective Plume Ht. (ft)	20.45
Calculation Method	Momentum Flux

Motor and Drives	
Motor	Included
Size (hp)	1
RPM	1725
Enclosure	ODP
V/C/P	460/60/3
Frame Size	56
Max Frame Size	184
Location	Centered
Pulley Type	Constant
Drive Loss (%)	6.3
Drives	Single
Drive Service Factor	1.5
NEC FLA* (Amps)	2.1

## Model: FJC-315-BI

### Centrifugal Utility Fume Exhaust Fan

#### Operating Performance



#### Sound Power by Octave Band

Sound Data	62.5	125	250	500	1000	2000	4000	8000	LwA	dBA	Sones
Inlet	83	82	79	78	76	72	68	61	81	69	17.2
Outlet	95	90	90	84	79	76	70	62	86	75	26

\*FLA - based on tables 150 or 148 of National Electrical Code 2002. Actual motor FLA may vary, for sizing thermal overload, consult factory.

LwA - A weighted sound power level, based on ANSI S1.4

dBA - A weighted sound pressure level, based on 11.5 dB attenuation per octave band at 5 ft- dBA levels are not licensed by AMCA International

Sones - calculated using AMCA 301 at 5 ft

## Model: FJC-315-BI

Centrifugal Utility Fume Exhaust Fan

### Standard Construction Features:

HOUSING: Coated steel frame, scroll and stack - Bolted frame construction - Perma-Lock sealed scroll - Rectangular discharge stack - Adjustable motor plate - Corrosion resistant fasteners BEARINGS, SHAFT and WHEEL: Air handling quality, self-aligning, ball bearing in pillow block housing - L(10) 80,000 bearing life - Polished, solid steel shaft - Backward inclined centrifugal wheel

### Selected Options & Accessories:

Motor with Class B or Greater Insulation

Finish - Coated

Coated with Permatector, Concrete Gray-RAL 7023, Fan and Attached Accessories

Discharge Position - UB

Wheel Type - BI

Bearings - L(10) Life of 80k Hours

UL/cUL-705 - Power Ventilators

Polished Steel Shaft

Drain Connection - 1" Drain Hole, Unthreaded

Inlet Connection - Slip Fit

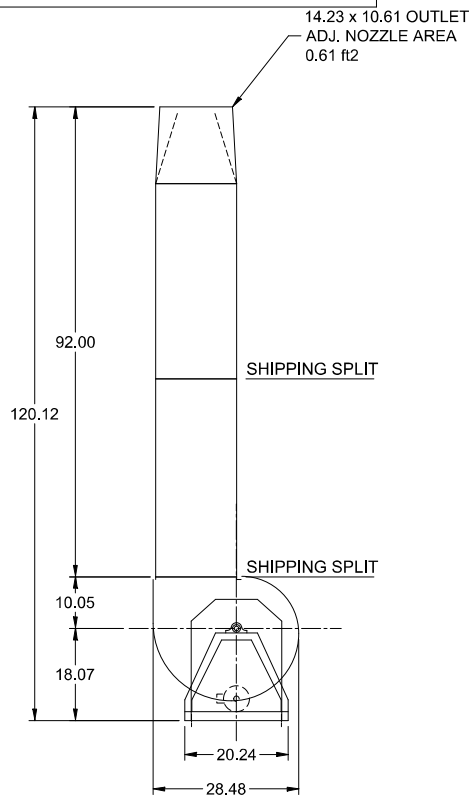
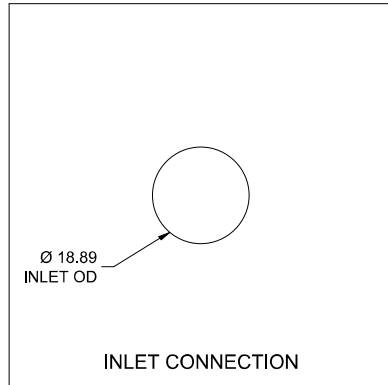
Outlet Connection - Slip Fit

Weatherhood - Steel

Unit Warranty: 1 Yr (Standard)

Model: FJC-315-BI

Centrifugal Utility Fume Exhaust Fan

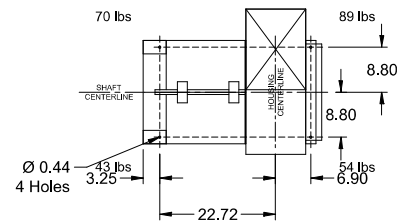


SIDE VIEW

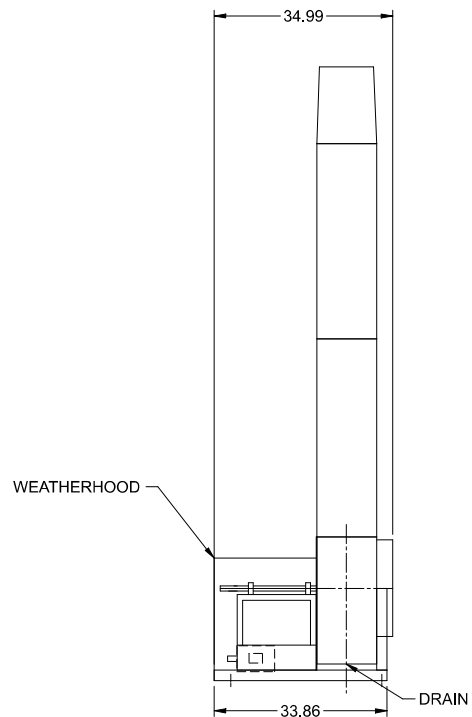
\*SIDE VIEW IS VIEWED FROM DRIVE SIDE

\*FANS ARE SUBJECT TO ±.125 INCH TOLERANCE

\*DUE TO CONTINUAL IMPROVEMENTS DIMENSIONS MAY CHANGE



FAN FOOTPRINT



END VIEW

Notes: All dimensions shown are in units of in.

## AMCA



AMCA Licensed for Sound and Air Performance. Power rating (BHP/kW) includes transmission losses.

Greenheck Fan Corporation certifies that the model shown herein is licensed to bear the AMCA Seal. The ratings shown are based on tests and procedures performed in accordance with AMCA Publication 211 and AMCA Publication 311 and comply with the requirements of the AMCA Certified Ratings Program. Performance certified is for installation type B: Free inlet, Ducted outlet. Performance ratings do not include the effects of appurtenances (accessories). Power ratings (BHP/kW) include transmission losses. The sound power level ratings shown are in decibels, referred to 10-12 watts calculated per AMCA Standard 301. The A-weighted sound ratings shown have been calculated per AMCA International Standard 301. Values shown are for inlet Lwi, LwiA, and outlet Lwo, LwoA sound power levels for installation type B: Free inlet, Ducted outlet. Outlet ratings include the effects of duct end correction. The AMCA Certified Ratings Seal for sound applies to inlet Lwi, LwiA, and outlet Lwo, LwoA ratings only.

# Model: GB-330

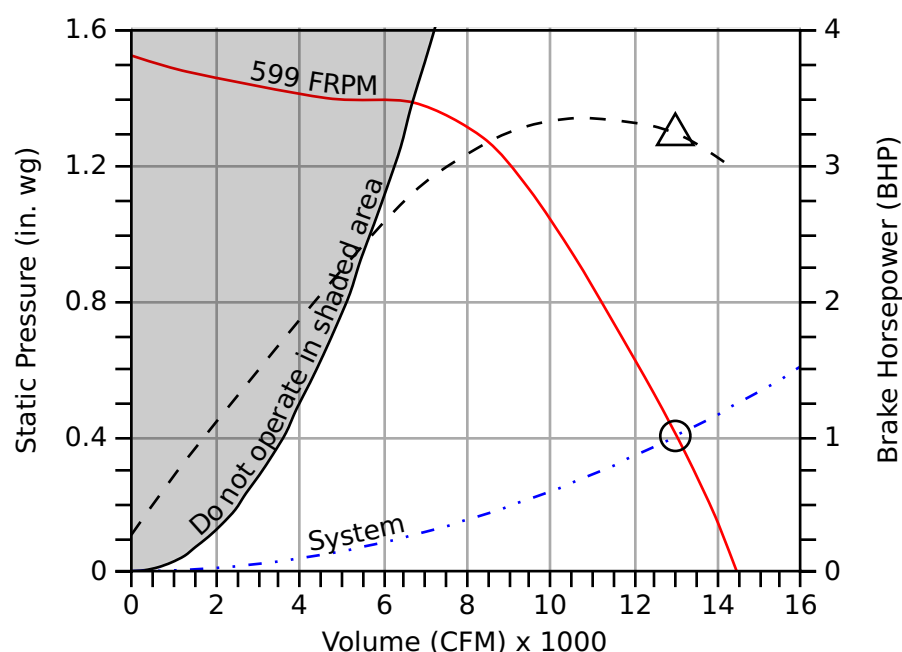
## Belt Drive Centrifugal Roof Exhaust Fan

**Standard Construction Features:** Aluminum housing. Centrifugal backward inclined aluminum wheel. Belt driven motor mounted on vibration isolation.

Fan Configuration	
Drive type	Belt

Performance	
Requested Volume (CFM)	13,000
Actual Volume (CFM)	13,000
Total External SP (in. wg)	0.4
Fan RPM	599
Drive Loss (%)	7
Operating Power (bhp)	3.2
Startup Power (bhp)	3.2
FEI	0.92
Air Stream Temp (F)	70
Start-up Temp (F)	70
Air Density (lbs/ft <sup>3</sup> )	0.072
Elevation (ft)	1000
Static Efficiency (%)	27
Outlet Velocity (ft/min)	2,070

Motor	
Size (hp)	5
V/C/P	460/60/3
NEC FLA (Amps)	7.6



- Fan curve
- - - Brake horsepower curve
- Operating Point SP
- △ Operating Bhp point
- Max system curve
- . . - System curve

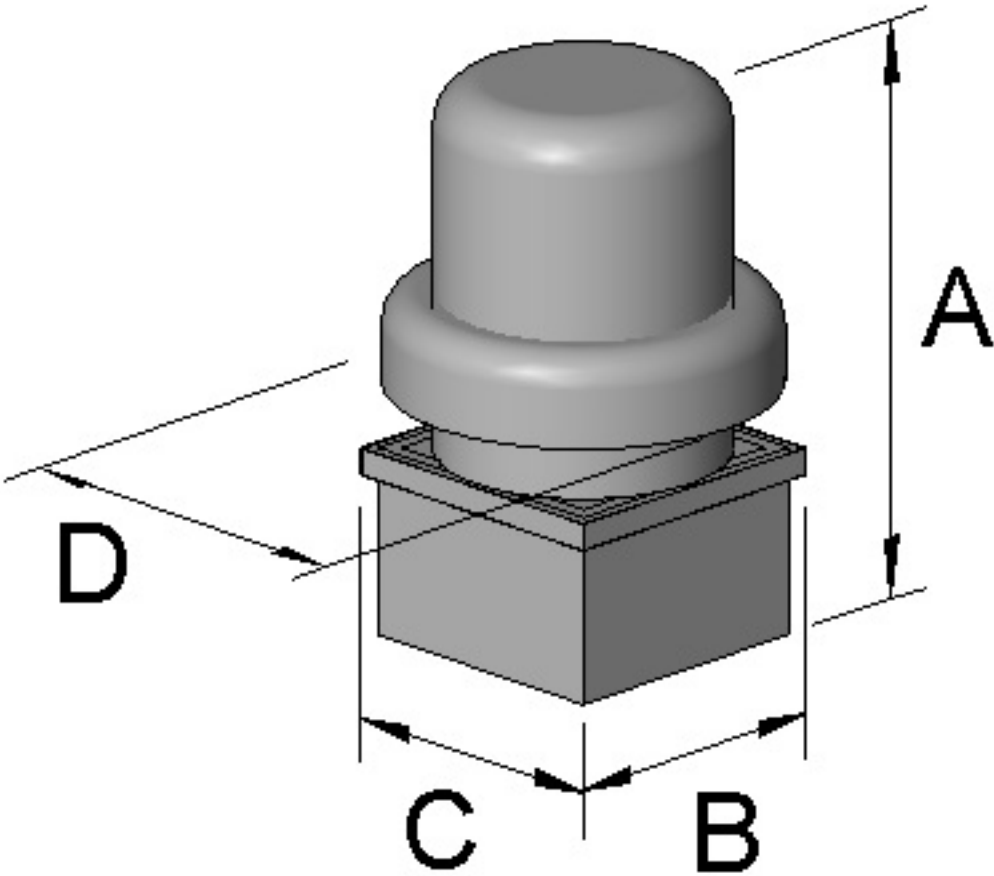
## Sound

	Octave Bands (hz)								LwA	dBA	Sones
	62.5	125	250	500	1000	2000	4000	8000			
Inlet	87	91	83	79	75	72	65	59	82	71	21



Greenheck Fan Corporation certifies that the model shown herein is licensed to bear the AMCA Seal. The ratings shown are based on tests and procedures performed in accordance with AMCA Publication 211 and AMCA Publication 311 and comply with the requirements of the AMCA Certified Ratings Program. The AMCA certified ratings seal applies to sound and air performance and FEI ratings only. Performance certified is for installation type A: Free inlet, free outlet. Power rating includes transmission losses. Performance ratings include the effects of birdscreen. The sound ratings shown are loudness values in hemispherical sones at 1.5 m (5 ft) in a hemispherical free field calculated per ANSI/AMCA Standard 301. Values shown are for Installation Type A: free inlet hemispherical sone levels. dBA levels are not licensed by AMCA International. The AMCA Certified Ratings Seal for Sound applies to inlet sone ratings only.

Dimensions and Weights		
Label	Value	Description
-	264	Weight w/o accessories (lbs)
A	51	Overall Height (in)
D	59	Overall Width (in)
B	46	Curb Cap Width (in)
C	46	Curb Cap Length (in)
-	36	Duct / Damper Width (in)
-	36	Duct / Damper Length (in)
-	38.5	Roof Opening Width (in)
-	38.5	Roof Opening Length (in)



\*All dimensions are in inches.