

April 15, 2020

20 FOOT WATER LINE EASEMENT DESCRIPTION  
PART OF SAINT LUKE'S HOSPITAL OF LEE'S SUMMIT, LOT 1 AND 2  
CITY OF LEE'S SUMMIT, JACKSON COUNTY, MISSOURI

All that part of Lot 1, SAINT LUKE'S HOSPITAL OF LEE'S SUMMIT, LOTS 1 AND 2, a subdivision of land in Lee's Summit, Jackson County, Missouri being recorded as Instrument No. 2012E0082534 in Book 142, Page 24, lying in the Southeast Quarter of Section 30, Township 48 North, Range 31 West, lying 10 feet on each side of the following described centerline, being more particularly described as follows:

Commencing at the Southwest corner of said Lot 1, also being the Southwest corner of said Southeast Quarter; thence N 1° 36' 41" E, along the West line of said Lot 1, also being the West line of said Southeast Quarter, a distance of 328.77 feet; thence S 88° 23' 11" W, a distance of 107.65 feet to a point on an existing 15 foot wide utility easement as established by said SAINT LUKE'S OF LEE'S SUMMIT, LOT 1 AND 2 Plat and the Point of Beginning of the 20 foot wide Water Line easement; thence S 3° 41' 12" E, a distance of 74.14 feet; thence S 26° 11' 12" E, a distance of 15.45 feet; thence S 71° 11' 12" E, a distance of 82.93 feet; thence N 63° 48' 48" E, a distance of 47.31 feet; thence S 71° 11' 12" E, a distance of 19.63 feet to a point of curvature; thence Southeasterly on a curve to the left, tangent to the last described course having a radius of 200.00 feet, a central angel of 5° 03' 10" and an arc length of 17.64 feet; thence S 76° 14' 22" E, a distance of 48.82 feet; thence S 42° 29' 22" E, a distance of 33.26 feet to a point on said existing 15 foot wide utility easement and the point of termination.

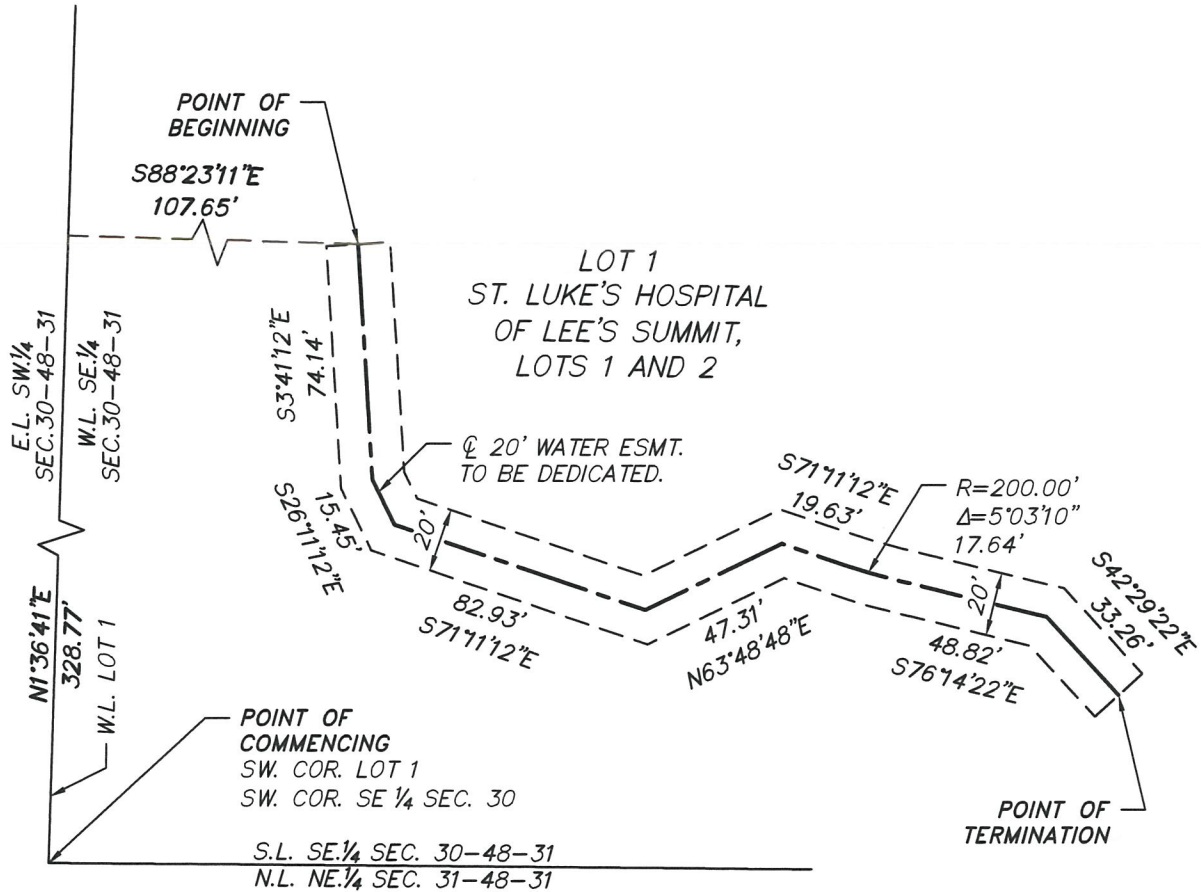
This description having been prepared by Stan W. Lloyd, MO LS-2001024811.

Containing 6,118 square feet, more or less.

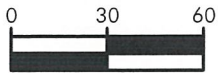
All bearings listed are in this description are based on the Missouri State Plane Coordinate System NAD 83.



# EASEMENT EXHIBIT



NORTH



(IN FEET)

1 inch = 60 ft.

McClure Engineering Company Certificate/License No. 2012009395

**McCLURE**  
ENGINEERING CO.  
building strong communities.

1700 SWIFT, SUITE 100  
NORTH KANSAS CITY, MO 64116  
PH: 816-756-0444  
FAX: 816-756-1763

PROJECT NO. 190891-000 DATE: 4/15/2020 BY: JDB REVISED: 6-29-20



April 15, 2020

15 FOOT UTILITY EASEMENT VACATION DESCRIPTION  
PART OF SAINT LUKE'S HOSPITAL OF LEE'S SUMMIT, LOT 1 AND 2  
CITY OF LEE'S SUMMIT, JACKSON COUNTY, MISSOURI

All that part of Lot 1, SAINT LUKE'S HOSPITAL OF LEE'S SUMMIT, LOTS 1 AND 2, a subdivision of land in Lee's Summit, Jackson County, Missouri being recorded as Instrument No. 2012E0082534 in Book 142, Page 24, lying in the Southeast Quarter of Section 30, Township 48 North, Range 31 West, lying 7.50 feet on each side of the following described centerline, being more particularly described as follows:

Commencing at the Southwest corner of said Lot 1, also being the Southwest corner of said Southeast Quarter; thence N 1° 36' 41" E, along the West line of said Lot 1, also being the West line of said Southeast Quarter, a distance of 328.77 feet; thence S 88° 23' 11" E, a distance of 107.65 feet to a point on an existing 15 foot wide Utility Easement as established by said SAINT LUKE'S OF LEE'S SUMMIT, LOT 1 AND 2 Plat and the Point of Beginning of the 15 foot wide Utility Easement Vacation; thence Southeasterly on a curve to the left, having an initial tangent bearing of S 47° 59' 57" E, a radius of 184.00 feet, a central angle of 25° 06' 05" and an arc length of 80.61 feet; thence S 36° 27' 34" E, a distance of 18.13 feet; thence S 80° 30' 25" E, a distance of 14.77; thence N 55° 37' 01" E, a distance of 17.27 feet; thence Southeasterly on a curve to the right, having an initial tangent bearing of S 73° 11' 48" E, a radius of 396.73 feet, a central angle of 5° 55' 00" and an arc length of 40.97 feet; thence S 69° 12' 53" E, a distance of 15.08 feet; thence Southeasterly on a curve to the right, having an initial tangent bearing of S 63° 53' 14" E, a radius of 253.31 feet, a central angle of 17° 41' 50" and an arc length of 78.24 feet; thence S 41° 53' 07" E, a distance of 15.82 feet; thence S 1° 33' 47" W, a distance of 16.69 feet to a point of termination of said 15 foot Utility Easement Vacation.

This description having been prepared by Stan W. Lloyd, MO LS-2001024811

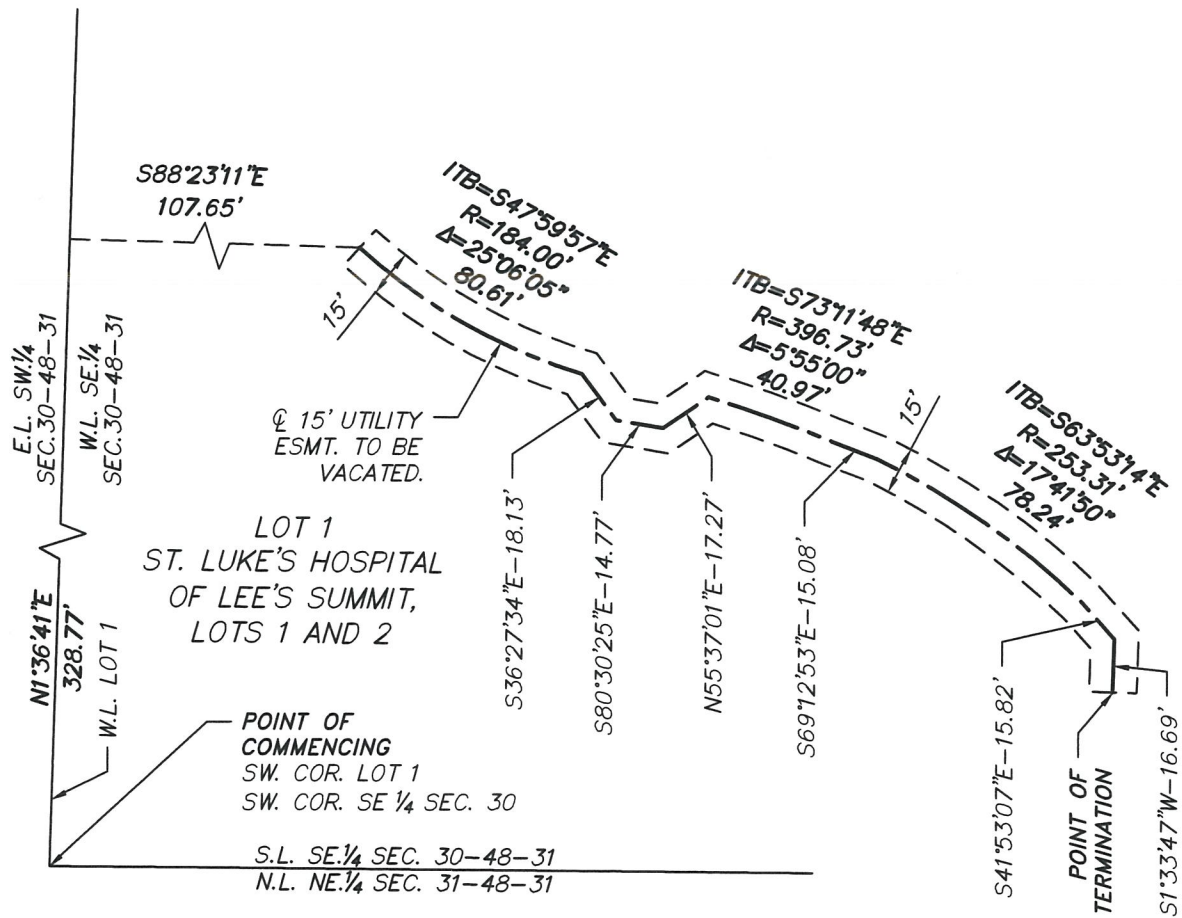
Containing 4,464 square feet, more or less.

All bearings listed in this description are based on the Missouri State Plane Coordinate System NAD 83.

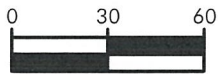


4/15/20

# EASEMENT EXHIBIT



NORTH



(IN FEET)

1 inch = 60 ft.

McClure Engineering Company Certificate/License No. 2012009395

**McCLURE**  
ENGINEERING CO.  
building strong communities.

1700 SWIFT, SUITE 100  
NORTH KANSAS CITY, MO 64116  
PH: 816.756.0444  
FAX: 816-756-1763



6/29/20

PROJECT NO.190891-000 DATE:4/15/2020 BY:JDB REVISED: 6-29-20