

HIGHLAND MEADOWS - 5TH PLAT

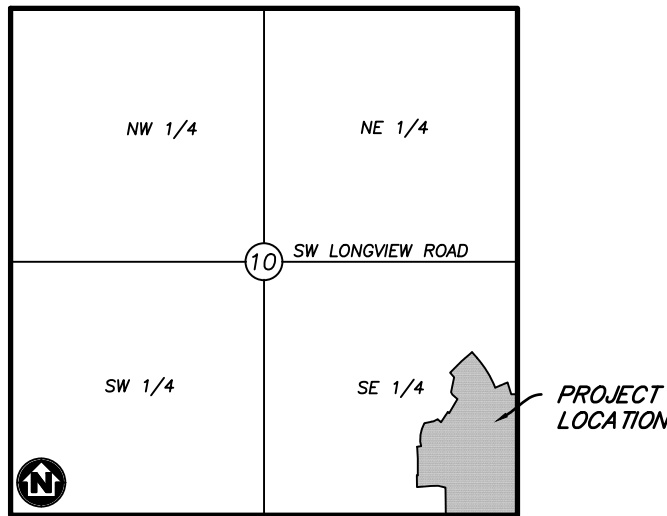
SANITARY SEWER EXTENSION PLANS

LEE'S SUMMIT, JACKSON COUNTY, MISSOURI

SEC. 10, TWP. 47N, RNG. 32W

DATE: 11/11/2020

LOTS: 134-159 (26 TOTAL)



VICINITY MAP

SECTION 10, TOWNSHIP 47, RANGE 32
LEE'S SUMMIT, JACKSON COUNTY, MISSOURI
NOT TO SCALE

LEGAL DESCRIPTION:

THE EAST HALF OF THE SOUTHEAST QUARTER OF SECTION 10, TOWNSHIP 47 NORTH, RANGE 32 WEST, EXCEPT THOSE PARTS PLATTED AS HIGHLAND MEADOWS FIRST PLAT, HIGHLAND MEADOWS SECOND PLAT, HIGHLAND MEADOWS THIRD PLAT, HIGHLAND MEADOWS 4TH PLAT, SUBDIVISIONS IN LEE'S SUMMIT, JACKSON COUNTY, MISSOURI.



Know what's below.
Call before you dig.



UTILITY CONTACTS:

SANITARY & WATER:
CITY OF LEE'S SUMMIT
JEFF THORN
220 SE GREEN STREET
LEE'S SUMMIT, MO 64063
PHONE (816) 969-1900

STORMWATER:
CITY OF LEE'S SUMMIT
GENE WILLIAMS
220 SE GREEN STREET
LEE'S SUMMIT, MO 64063
PHONE (816) 969-1900

STREETS:
CITY OF LEE'S SUMMIT
MICHAEL PARK
220 SE GREEN STREET
LEE'S SUMMIT, MO 64063
PHONE (816) 969-1900

AT&T:
RONALD GIFFERT
500 E 8TH STREET
KANSAS CITY, MO 64106
PHONE (816) 275-1550

KCP&L:
DOUG DAVIN
1300 SE HAMBLIN ROAD
LEE'S SUMMIT, MO 64081
PHONE (816) 347-4320

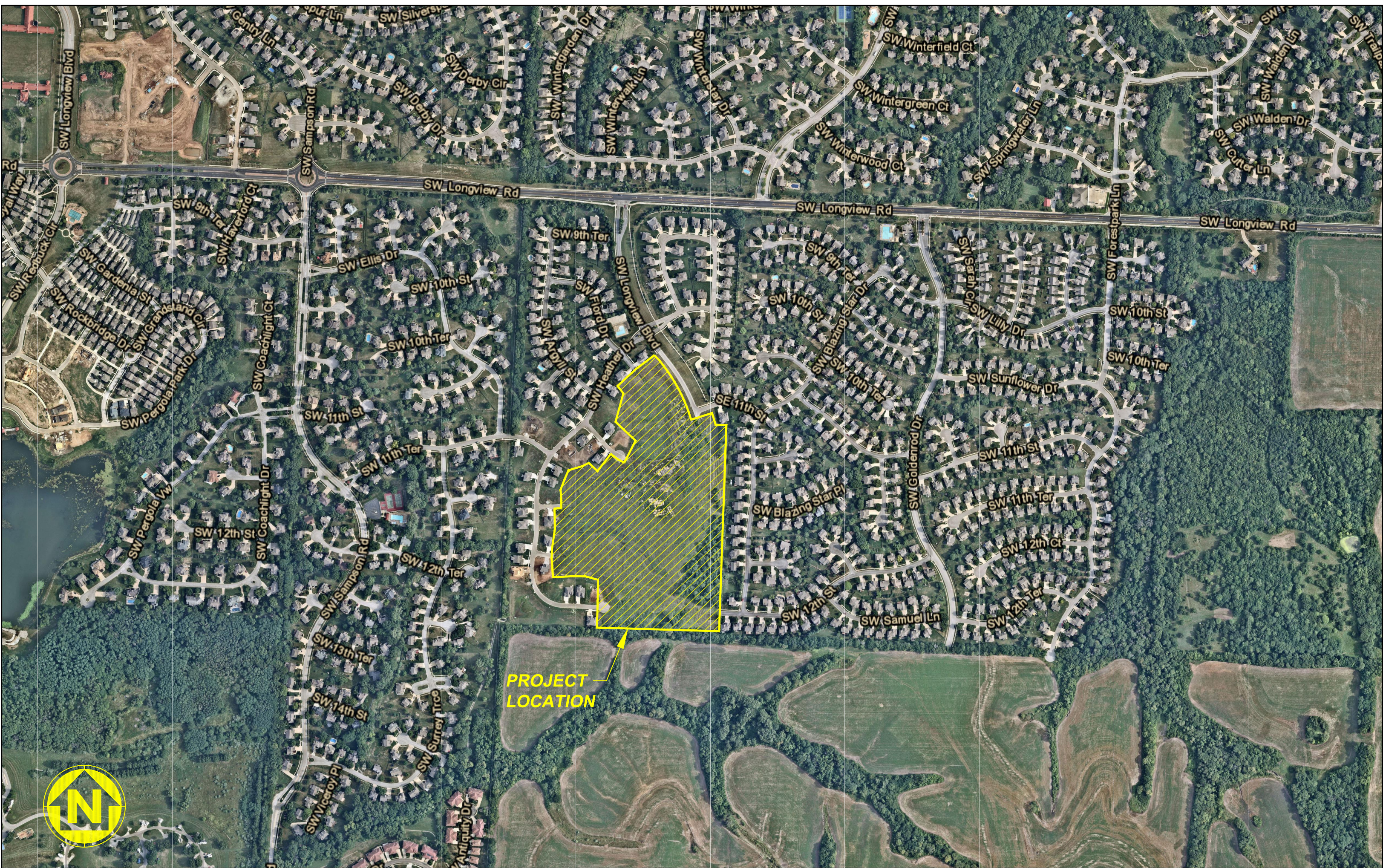
MISSOURI GAS ENERGY:
RICHARD FROCK
3025 SW CLOVER DRIVE
LEE'S SUMMIT, MO 64082
PHONE (816) 472-3489

FEMA FLOOD INFORMATION:

THE SITE IS LOCATED IN ZONE X, AREA OF MINIMAL FLOOD HAZARD, PER FEMA FIRM MAP 29095C0418G: EFFECTIVE DATE OF JANUARY 20, 2017. NO LETTERS OF MAP AMENDMENT OR REVISIONS ARE BEING PROPOSED.

BENCHMARK:

BM #1 N=999843.9665 E=2898946.9717 ELEV=935.04
DESCRIPTION = "JA-148" REFERENCE SYSTEM MONUMENT



WATERSHED: LITTLE BLUE RIVER

DISTURBED AREA: 14.9 AC

SURVEY CONTROL:

COORDINATES ARE BASED ON THE MISSOURI STATE PLANE COORDINATE SYSTEM, WEST ZONE, USING JACKSON COUNTY, MISSOURI, GEOGRAPHIC REFERENCE SYSTEM MONUMENT JA-148 (2003 ADJUSTMENT) AND ARE MODIFIED FROM GRIS COORDINATES TO GROUND COORDINATES BY UTILIZING A GRID SCALE FACTOR OF 0.9999020 AT REFERENCE MONUMENT JA-148.

PROJECT ELEVATIONS ARE BASED ON JACKSON COUNTY, MISSOURI, GEOGRAPHIC REFERENCE SYSTEM MONUMENT JA-148 (2003 ADJUSTMENT).

"JA-148" - STANDARD KC METRO ALUMINUM GRS DISK SET IN CONCRETE FLUSH WITH THE GROUND AND STAMPED "JA-148, 2002" LOCATED ON THE NORTH SIDE OF 3RD STREET, 12.5 FEET NORTH OF A SIDEWALK AND 102.5 FEET WEST OF THE PARKING LOT EXIT OF CEDAR CREEK ELEMENTARY SCHOOL.

GENERAL NOTES:

- CONTRACTOR SHALL SATISFY THEMSELVES AS TO THE EXISTING CONDITIONS OF THE SITE AND HAVE ALL UTILITIES MARKED PRIOR TO COMMENCING CONSTRUCTION.
- CONTRACTOR SHALL POTHOLE ALL CONNECTION POINTS TO EXISTING UTILITIES AND POTENTIAL UTILITY CONFLICT LOCATIONS PRIOR TO ANY CONSTRUCTION ACTIVITIES. NOTIFY ENGINEER IMMEDIATELY IF CONFLICT OR DISCREPANCY EXISTS.
- CONTRACTOR SHALL PROTECT EXISTING STRUCTURES TO REMAIN FROM DAMAGE DURING DEMOLITION AND CONSTRUCTION. ANY DAMAGE SHALL BE REPAIRED/ REPLACED TO PRE-CONSTRUCTION CONDITION AT CONTRACTOR'S EXPENSE.

DEVELOPER:

VINCENT WALKER
SUMMIT HOMES KC
120 SE 30TH STREET
LEE'S SUMMIT, MO 64082
VINCENT@SUMMITHOMESKC.COM
(816) 246-6700

CIVIL ENGINEER:

ZACH MYERS
ANDERSON ENGINEERING, INC.
941 W 141ST TERR
KANSAS CITY, MO 64145
ZMYERS@ANDERSONENGINEERINGINC.COM
(816) 380-4821

PREPARED & SUBMITTED BY:
ANDERSON ENGINEERING INC.
KANSAS CITY, MISSOURI

ZACH MYERS, P.E. DATE
MISSOURI P.E. NO. 2012009232

APPROVED BY:
CITY OF LEE'S SUMMIT, MISSOURI

AUTHORIZING POSITION DATE

SHEET INDEX:

CVR - COVER SHEET
C101 - GENERAL LAYOUT
C102 - SANITARY SEWER A AND B PLAN & PROFILE
C103 - SANITARY SEWER C AND D PLAN & PROFILE
C401 - SANITARY SEWER DETAILS

PROJECT SPECIFICATIONS:

THE SPECIFICATIONS FOR THIS PROJECT SHALL BE THE FOLLOWING:

- MOST CURRENT VERSION OF THE DESIGN AND CONSTRUCTION MANUAL OF THE CITY OF LEE'S SUMMIT, MISSOURI.
- MOST CURRENT EDITION OF AMERICAN PUBLIC WORKS ASSOCIATION (APWA) KANSAS CITY METROPOLITAN CHAPTER "STANDARD SPECIFICATIONS AND DESIGN CRITERIA"

THE STANDARD SPECIFICATIONS THROUGH AND INCLUDING THE LATEST AMENDMENTS SHALL BE PART OF THESE PROJECT DRAWINGS AND SPECIFICATIONS AND ARE INCORPORATED HEREIN BY REFERENCE. THE MORE STRINGENT OF THESE STANDARD SPECIFICATIONS AND THOSE PREPARED BY THE ENGINEER PREPARING THESE PLANS SHALL GOVERN.

ANDERSON ENGINEERING
EMPLOYEE OWNED

AE

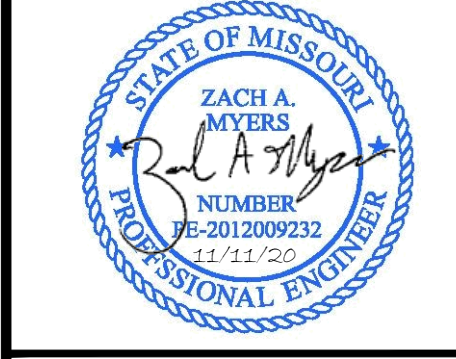
ENGINEERS • SURVEYORS • LABORATORIES • DRILLING
811 E. THIRD STREET • JOPLIN, MISSOURI 64801 • PHONE (417) 782-7399
A LICENSED MISSOURI ENGINEERING & SURVEYING CORPORATION - LC 62

DRAWING INFO.		REVISIONS	
DRAWN BY:	GC	NO.	DESCRIPTION
CHECK BY:	ZM	BY	DATE
LICENSE NO.	FE-2012009232		
DATE:	11/11/2020		
ISSUED FOR:	FOR REVIEW		
JOB NUMBER:	20K010057		
MO COA NO.	00062		

SUMMIT HOMES KC
HIGHLAND MEADOWS - 5TH PLAT

COVER SHEET

S10, T47N, R32W
LEE'S SUMMIT, JACKSON COUNTY, MISSOURI

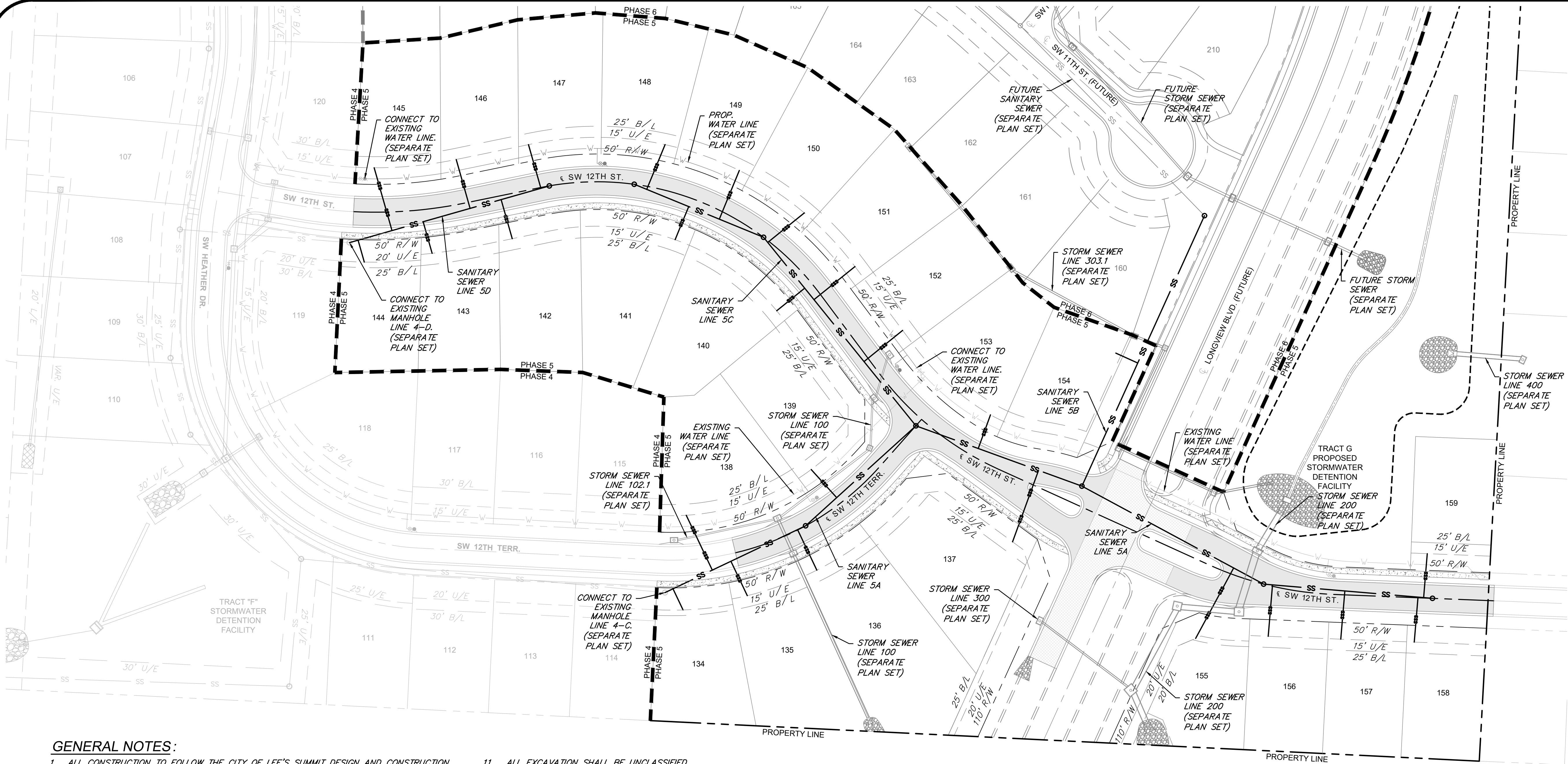


SHEET NUMBER

CVR

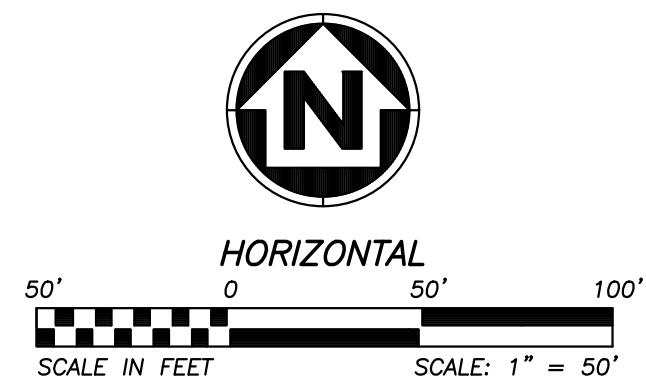
1 OF 5

Nov 11, 2020 - 12:02pm Plotted by: gaoe G:\Shared drives\KC10 - Land Development\Projects\2020\20K10057 Highland Meadows - 5th Plat\01 CIVIL 03-DWG\Sheet\20K10057 SANITARY SEWER\20K10057 - SH15 - GENERAL LAYOUT.dwg Layout: GENERAL LAYOUT



GENERAL NOTES:

- ALL CONSTRUCTION TO FOLLOW THE CITY OF LEE'S SUMMIT DESIGN AND CONSTRUCTION MANUAL AS ADOPTED BY ORDINANCE 5813.
- ALL WORKMANSHIP AND MATERIALS SHALL BE SUBJECT TO THE INSPECTION AND APPROVAL OF THE ENGINEERING DEPARTMENT OF THE CITY OF LEE'S SUMMIT, MISSOURI.
- LINEAL FOOT MEASUREMENTS SHOWN ON THE PLANS ARE HORIZONTAL MEASUREMENTS, NOT SLOPE MEASUREMENTS.
- NO GEOLOGICAL INVESTIGATION HAS BEEN PERFORMED ON THIS PROJECT.
- THE UTILITY LOCATIONS SHOWN ON THESE PLANS ARE TAKEN FROM UTILITY COMPANY RECORDS AND APPARENT FIELD LOCATIONS. THE CONTRACTOR SHALL VERIFY THE LOCATION AND DEPTH OF ALL UTILITIES PRIOR TO CONSTRUCTION.
- THE CONTRACTOR SHALL ADHERE TO THE PROVISIONS OF THE SENATE BILL 583, 78TH GENERAL ASSEMBLY OF THE STATE OF MISSOURI. THE BILL REQUIRES THAT ANY PERSON OR FIRM DOING EXCAVATION ON PUBLIC RIGHT-OF-WAY DON SO ONLY AFTER GIVING NOTICE TO, AND OBTAINING INFORMATION FROM, UTILITY COMPANIES. STATE LAW REQUIRES 72 HOURS ADVANCE NOTICE. THE CONTRACTOR MAY ALSO UTILIZE THE FOLLOWING TOLL FREE PHONE NUMBER PROVIDED BY "MISSOURI ONE CALL SYSTEM, INC.", 1-(800)-DIG RITE OR 811. THIS PHONE NUMBER IS APPLICABLE ANYWHERE WITHIN THE STATE OF MISSOURI. PRIOR TO COMMENCEMENT OF WORK, THE CONTRACTOR SHALL NOTIFY ALL THOSE COMPANIES WHICH HAVE FACILITIES IN THE NEAR VICINITY OF THE CONSTRUCTION TO BE PERFORMED.
- PRIOR TO ORDERING PRECAST STRUCTURES, SHOP DRAWINGS SHALL BE SUBMITTED TO THE DESIGN ENGINEER FOR APPROVAL.
- THE CONTRACTOR SHALL PROTECT ALL MAJOR TREES FROM DAMAGE. NO TREE SHALL BE REMOVED WITHOUT PERMISSION OF THE OWNER, UNLESS SHOWN OTHERWISE.
- CLEARING AND GRUBBING OPERATIONS AND DISPOSAL OF ALL DEBRIS THEREFROM SHALL BE PERFORMED BY THE CONTRACTOR IN STRICT ACCORDANCE WITH ALL LOCAL CODES AND ORDINANCES.
- ALL WASTE MATERIAL RESULTING FROM THE PROJECT SHALL BE DISPOSED OF OFF-SITE BY THE CONTRACTOR, OR AS DIRECTED BY THE OWNER.
- ALL EXCAVATION SHALL BE UNCLASSIFIED.
- THE CONTRACTOR SHALL CONTROL THE EROSION AND SILTATION DURING ALL PHASES OF CONSTRUCTION, AND SHALL KEEP THE STREETS CLEAN OF MUD AND DEBRIS.
- ALL MANHOLES, CATCH BASINS, UTILITY VALVES, AND METER PITS TO BE ADJUSTED OR REBUILT TO GRADE AS REQUIRED. ALL EXISTING UTILITIES SHALL BE ADJUSTED AS REQUIRED.
- SUBGRADE SOIL FOR ALL CONCRETE STRUCTURES, REGARDLESS OF THE TYPE OR LOCATION, SHALL BE FIRM, DENSE AND THOROUGHLY COMPACTED AND CONSOLIDATED; SHALL BE FREE FROM MUCK AND MUD; AND SHALL BE SUFFICIENTLY STABLE TO REMAIN FIRM AND INTACT UNDER THE FEET OF THE WORKMEN OR MACHINERY ENGAGED IN SUBGRADE SURFACING, LAYING REINFORCING STEEL, AND DEPOSITING CONCRETE THEREON. IN ALL CASES WHERE SUBSOIL IS MUCKY OR WORKS INTO MUD OR MUCK DURING SUCH OPERATION, A SEAL COURSE OF EITHER CONCRETE OR ROCK SHALL BE PLACED BELOW SUBGRADE TO PROVIDE A FIRM BASE FOR WORKING AND FOR PLACING HE FLOOR SLAB.
- THE CONTRACTOR SHALL CONTACT PUBLIC WORKS INSPECTIONS AT 816-969-1800 TO OBTAIN A PUBLIC WORKS CONSTRUCTION PERMIT. A MINIMUM 48 HOUR NOTICE SHALL BE GIVEN PRIOR TO PERMIT ISSUANCE.
- THE CONTRACTOR SHALL CONTACT THE CITY'S EROSION CONTROL SPECIALIST AT 816-969-1800 PRIOR TO ANY LAND DISTURBANCE.
- THE CONTRACTOR SHALL CONTACT THE RIGHT-OF-WAY INSPECTOR AT 816-969-1800 PRIOR TO ANY LAND DISTURBANCE ACTIVITIES WITHIN THE RIGHT-OF-WAY. THESE ACTIVITIES MAY REQUIRE A PERMIT.
- THE CONTRACTOR SHALL PROVIDE AND MAINTAIN ALL TRAFFIC HANDLING MEASURES NECESSARY TO ENSURE THAT THE GENERAL PUBLIC IS PROTECTED AT ALL TIMES. TRAFFIC CONTROL SHALL CONFORM TO THE MANUAL ON UNIFORM TRAFFIC CONTROL DEVICES (MUTCD - LATEST EDITION).
- ALL SANITARY SEWER LATERALS SHALL HAVE A TRENCH CHECK, CONSISTING OF A FLOWABLE BACKFILL, INSTALLED DURING CONSTRUCTION. TRENCH CHECK SHALL EXTEND TO BOTTOM OF TRENCH, TO WIDTH OF TRENCH TO 12 INCHES ABOVE PIPE, FOR A MINIMUM LENGTH OF 12 INCHES. TRENCH CHECK SHALL BE LOCATED AT LEAST 5 FEET FROM SANITARY MAIN.



ENGINEERING CONTROL:

COORDINATES ARE BASED ON THE MISSOURI STATE PLANE COORDINATE SYSTEM, WEST ZONE, USING JACKSON COUNTY, MISSOURI, GEOGRAPHIC REFERENCE SYSTEM MONUMENT JA-148 (2003 ADJUSTMENT) AND ARE MODIFIED FROM GRID COORDINATES TO GROUND COORDINATES BY UTILIZING A GRID SCALE FACTOR OF 0.9999020 AT REFERENCE MONUMENT JA-148.

PROJECT ELEVATIONS ARE BASED ON JACKSON COUNTY, MISSOURI, GEOGRAPHIC REFERENCE SYSTEM MONUMENT JA-148 (2003 ADJUSTMENT).

"JA-148"-STANDARD KC METRO ALUMINUM GRS DISK SET IN CONCRETE FLUSH WITH THE GROUND AND STAMPED "JA-148, 2002" LOCATED ON THE NORTH SIDE OF 3RD STREET, 12.5 FEET NORTH OF A SIDEWALK AND 102.5 FEET WEST OF THE PARKING LOT EXIT OF CEDAR CREEK ELEMENTARY SCHOOL.

PROJECT BENCHMARK(S) AND/OR CONTROL POINT(S)

BM #1 N=999843.9665 E=2898946.9717 ELEV=935.04
DESC="JA-148" REFERENCE SYSTEM MONUMENT

**ANDERSON
ENGINEERING**
EMPLOYEE OWNED

AE

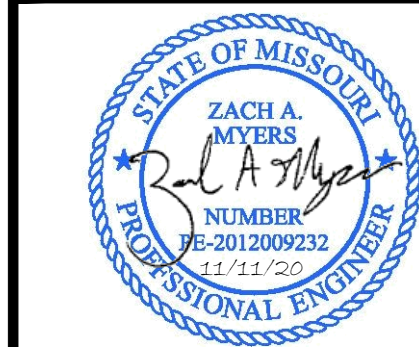
ENGINEERS • SURVEYORS • LABORATORIES • DRILLING
811 E. THIRD STREET • JOPLIN, MISSOURI 64801 • PHONE (417) 782-7399
A LICENSED MISSOURI ENGINEERING & SURVEYING CORPORATION - LC 62

REVISIONS		DRAWING INFO.	
NO.	DESCRIPTION	BY	DATE
		DRAWN BY:	GC
		CHECK BY:	ZM
		LICENSE NO.	FE-2015003232
		DATE:	11/11/2020
		ISSUED FOR:	FOR REVIEW
		JOB NUMBER:	20K10057
		MO COA NO.	000062

© COPYRIGHT ANDERSON ENGINEERING, INC. 2020

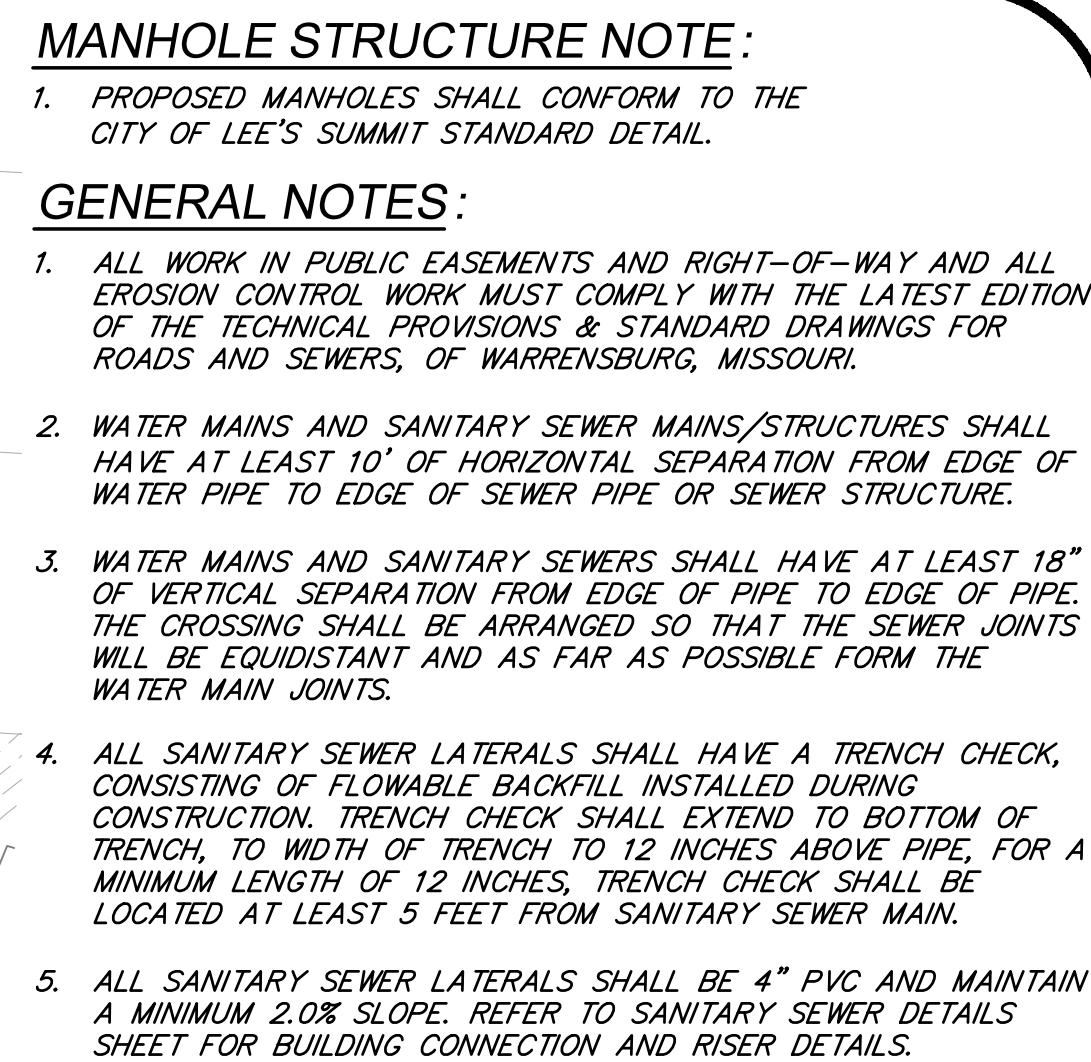
SUMMIT HOMES KC
HIGHLAND MEADOWS - 5TH PLAT

GENERAL LAYOUT



SHEET NUMBER
C101
2 OF 5

S10, T47N, R32W
LEE'S SUMMIT, JACKSON COUNTY, MISSOURI



The diagram illustrates the Sanitary Sewer Service layout. It includes a profile view on the left showing the sewer line's elevation and stationing, and a plan view on the right showing the sewer line's alignment and manhole locations.

Profile View:

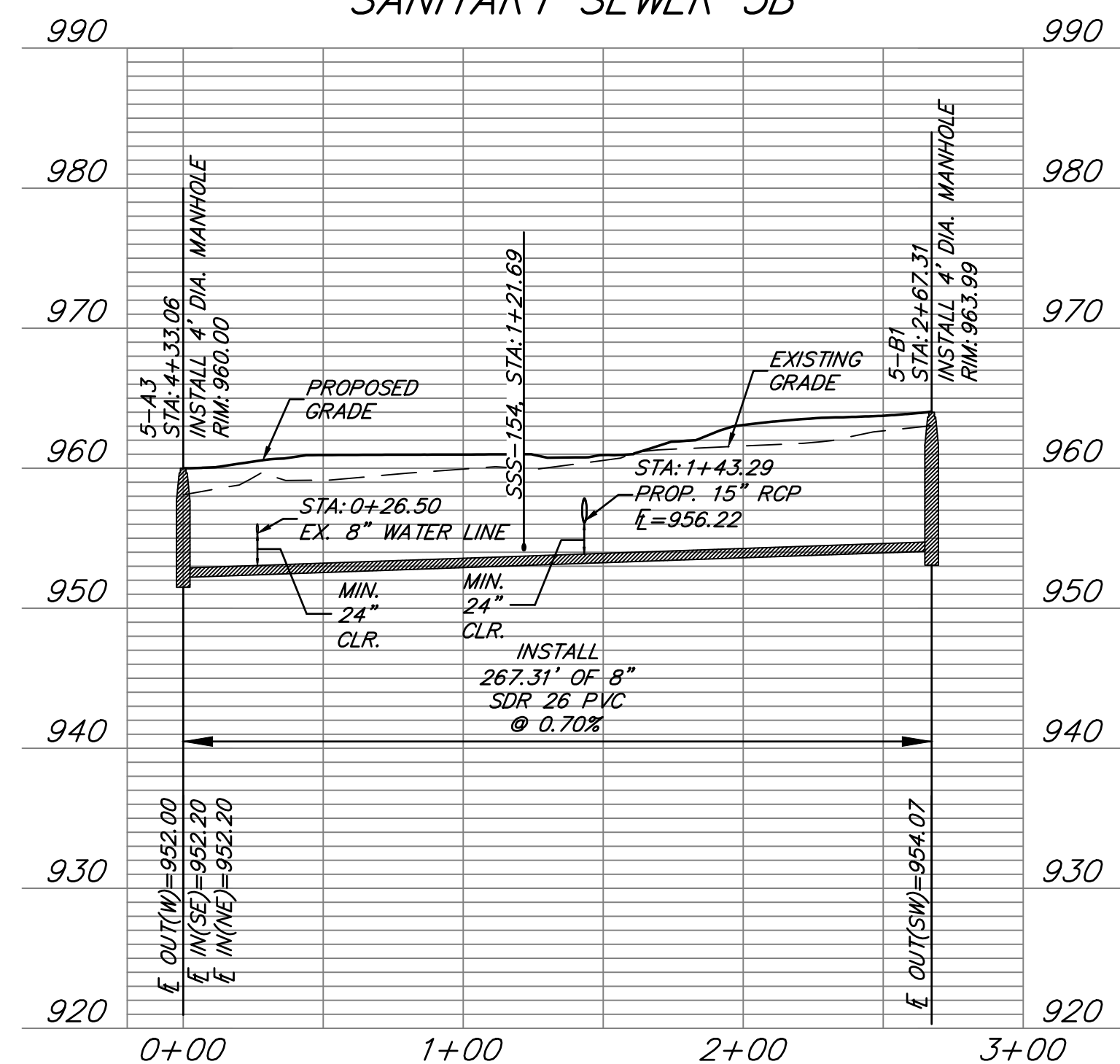
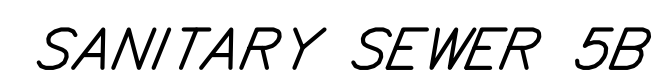
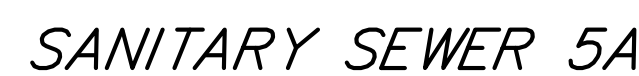
- The vertical axis represents elevation in feet, with markings at 0, 10, and 20.
- The horizontal axis represents stationing, with markings at 0, 50, and 100.
- The sewer line is shown as a solid black line with a checkered pattern indicating the manhole locations.
- The profile view shows the sewer line starting at station 0+00.00 and ending at station 3+33.81.
- The profile view shows the sewer line's elevation starting at 10.16' and ending at 95.09'.
- The profile view shows the sewer line's slope as 1"=50'.
- The profile view shows the sewer line's vertical curve as 1"=10'.

Plan View:

- The plan view shows the sewer line's alignment and manhole locations.
- The plan view shows the sewer line starting at station 0+00.00 and ending at station 3+33.81.
- The plan view shows the sewer line's alignment as a straight line.
- The plan view shows the sewer line's manhole locations at stations 0+00.00, 0+65.72, 0+47.18, 1+77.88, 1+32.10, 3+91.53, 5+88.19, 6+26.87, 6+92.17, 7+58.25, 7+63.33, and 3+33.81.

Sanitary Sewer Service Table:

PIPE NAME	STATION	LENGTH	SLOPE	MSFE
SSS-134	0+08.00	21'	2.00%	950.16+(3.5')
SSS-135	0+65.72	34'	2.00%	950.83+(3.5')
SSS-138	0+47.18	55'	2.00%	951.11+(3.5')
SSS-139	1+77.88	34'	2.00%	951.83+(3.5')
SSS-136	1+32.10	40'	2.00%	951.42+(3.5')
SSS-137	3+91.53	68'	2.00%	954.22+(3.5')
SSS-155	5+88.19	72'	2.00%	956.66+(3.5')
SSS-156	6+26.87	46'	2.00%	956.77+(3.5')
SSS-157	6+92.17	44'	2.00%	957.18+(3.5')
SSS-158	7+58.25	41'	2.00%	957.57+(3.5')
SSS-159	7+63.33	40'	2.00%	957.59+(3.5')
SSS-154	1+21.69	22'	2.00%	954.62+(3.5')
SSS-153	3+33.81	32'	2.00%	953.09+(3.5')



**ANDERSON
ENGINEERING**
EMPLOYEE OWNED



ENGINEERS • SURVEYORS • LABORATORIES • DRILLING
811 E. THIRD STREET • JOPLIN, MISSOURI 64801 • PHONE (417) 782-7399
A LICENSED MISSOURI ENGINEERING & SURVEYING CORPORATION - LC

NO.		BY	DATE	DRAWN BY:	GC
				CHECK BY:	ZM
				LICENSE NO.	PE-2012003232
				DATE:	11/11/2020
				ISSUED FOR:	FOR REVIEW
				JOB NUMBER:	20KGC10057
				MO COA NO.	000062

© COPYRIGHT ANDERSON ENGINEERING, INC. 2020

© COPYRIGHT ANDERSON ENGINEERING, INC. 2020

SUMMIT HOMES KC
HIGHLAND MEADOWS - 5TH PLAT

SANITARY SEWER A AND B PLAN & PROFILE

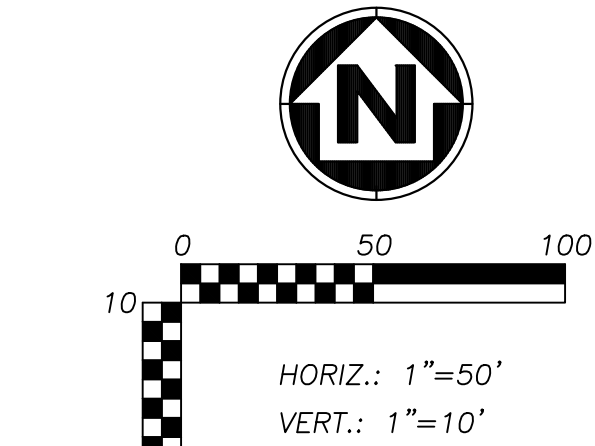
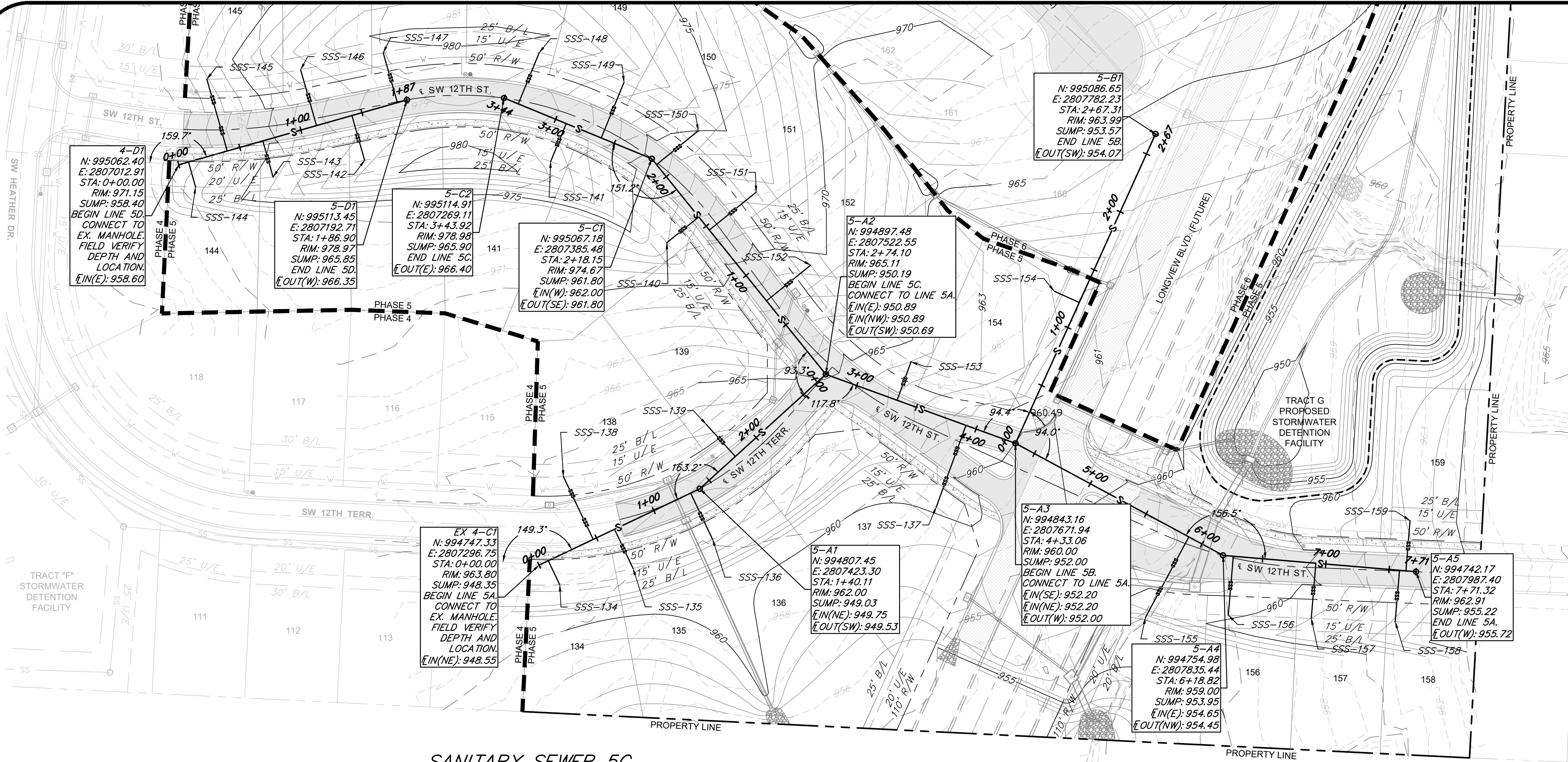


SHEET NUMBER

C102
3 OF 5

S10, T47N, R32W
S10, T47N, R32W

Nov 11, 2020 - 12:03pm Plotted by: gte G:\Shared drives\VC10 - Land Development\Projects\2020\20K10057 Highland Meadows - 5th Plat\01 CIVIL\03-DWG\Bases\20K10057.dwg Layout: SANITARY SEWER C AND D PLAN & PROFILE



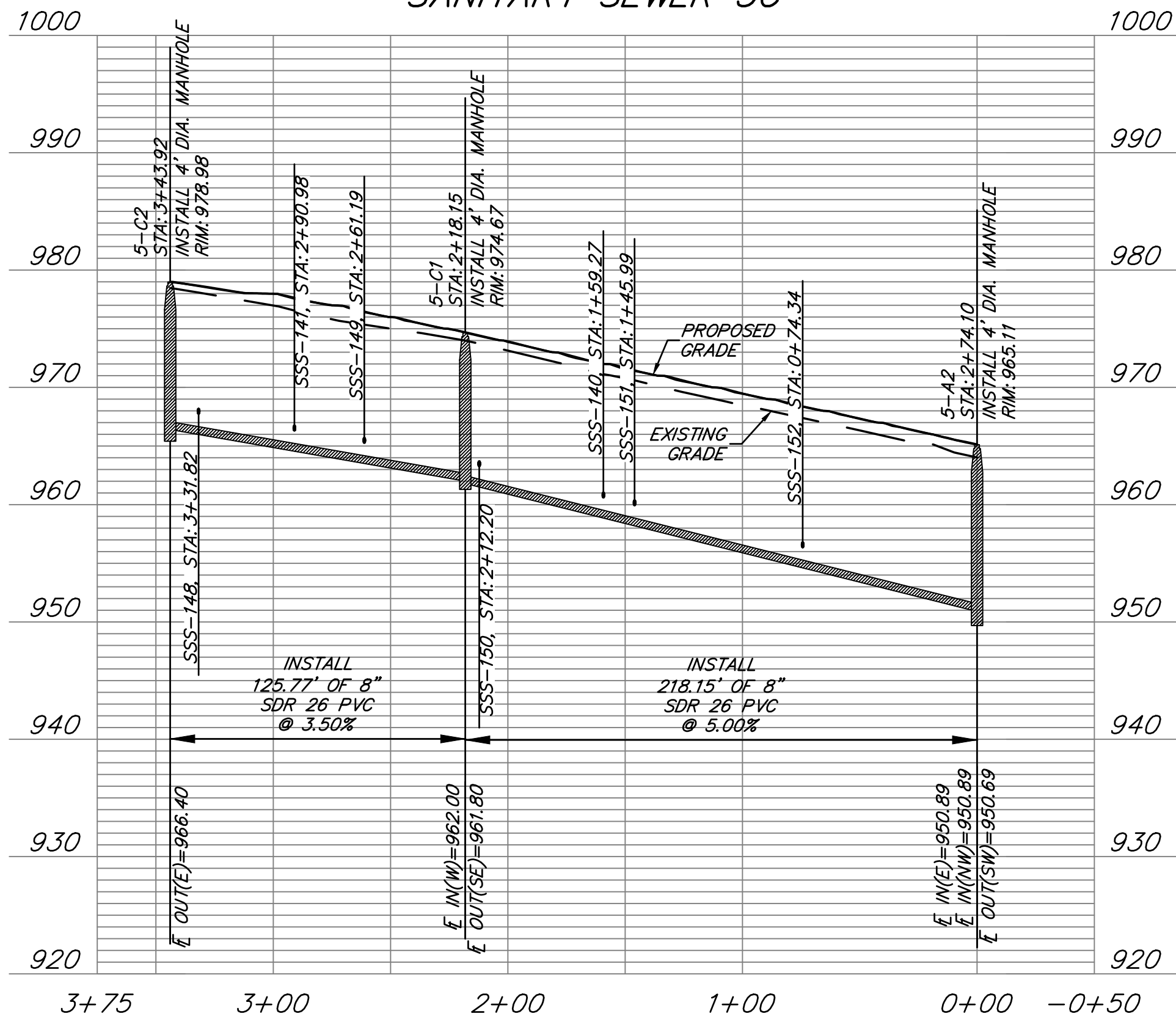
MANHOLE STRUCTURE NOTE:

- PROPOSED MANHOLES SHALL CONFORM TO THE CITY OF LEE'S SUMMIT STANDARD DETAIL.

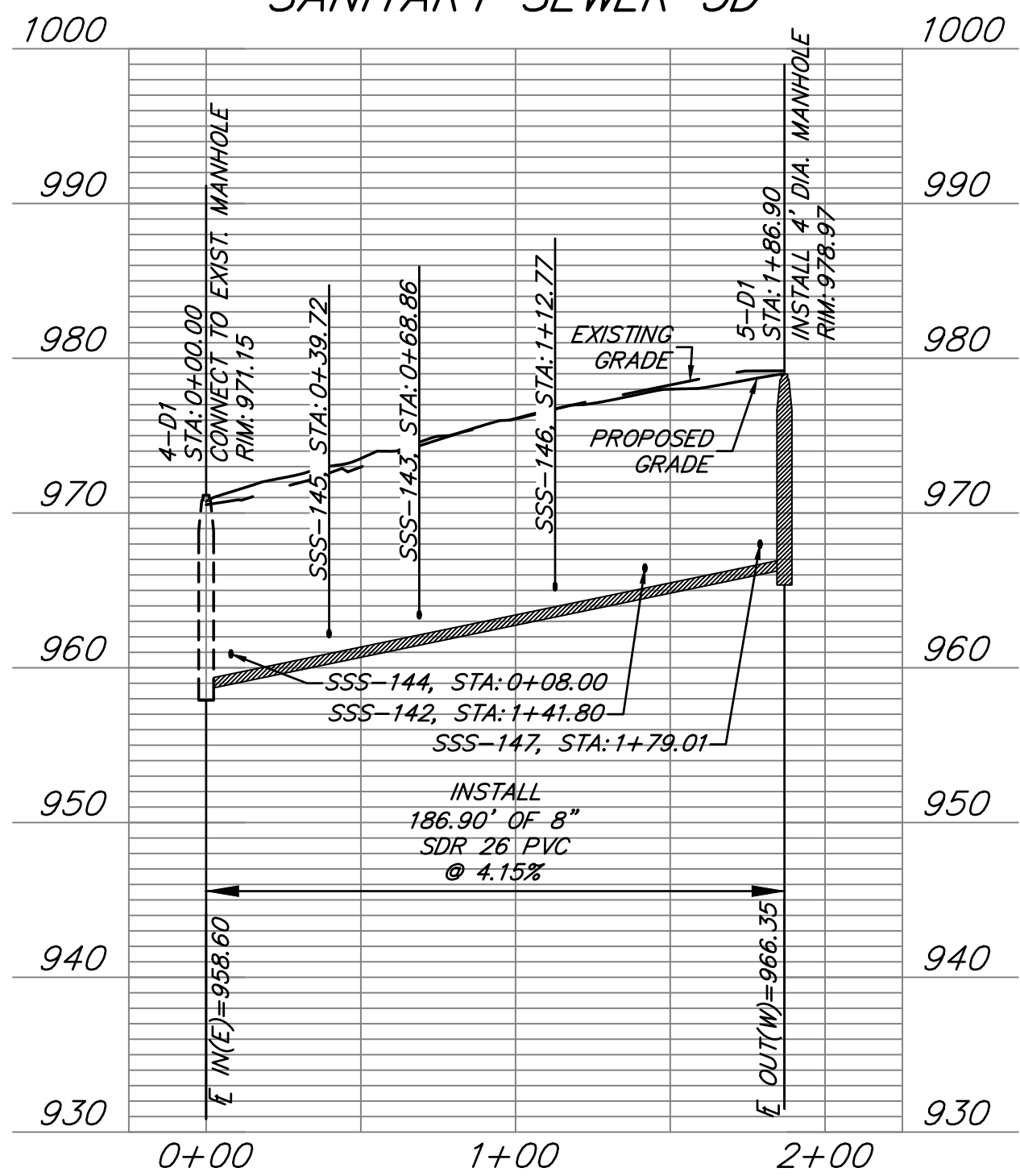
GENERAL NOTES:

- ALL WORK IN PUBLIC EASEMENTS AND RIGHT-OF-WAY AND ALL EROSION CONTROL WORK MUST COMPLY WITH THE LATEST EDITION OF THE TECHNICAL PROVISIONS & STANDARD DRAWINGS FOR ROADS AND SEWERS, OF WARRENSBURG, MISSOURI.
- WATER MAINS AND SANITARY SEWER MAINS/STRUCTURES SHALL HAVE AT LEAST 10' OF HORIZONTAL SEPARATION FROM EDGE OF WATER PIPE TO EDGE OF SEWER PIPE OR SEWER STRUCTURE.
- WATER MAINS AND SANITARY SEWERS SHALL HAVE AT LEAST 18" OF VERTICAL SEPARATION FROM EDGE OF PIPE TO EDGE OF PIPE. THE CROSSING SHALL BE ARRANGED SO THAT THE SEWER JOINTS WILL BE EQUIDISTANT AND AS FAR AS POSSIBLE FORM THE WATER MAIN JOINTS.
- ALL SANITARY SEWER LATERALS SHALL HAVE A TRENCH CHECK, CONSISTING OF FLOWABLE BACKFILL, INSTALLED DURING CONSTRUCTION. TRENCH CHECK SHALL EXTEND TO BOTTOM OF TRENCH, TO WIDTH OF TRENCH TO 12 INCHES ABOVE PIPE, FOR A MINIMUM LENGTH OF 12 INCHES. TRENCH CHECK SHALL BE LOCATED AT LEAST 5 FEET FROM SANITARY SEWER MAIN.
- ALL SANITARY SEWER LATERALS SHALL BE 4" PVC AND MAINTAIN A MINIMUM 2.0% SLOPE. REFER TO SANITARY SEWER DETAILS SHEET FOR BUILDING CONNECTION AND RISER DETAILS.

SANITARY SEWER 5C



SANITARY SEWER 5D



SANITARY SEWER SERVICE					
PIPE NAME	STATION	LENGTH	SLOPE	MSFE	
SSS-152	0+74.34	45'	2.00%	957.30+(3.5')	
SSS-151	1+45.99	47'	2.00%	960.94+(3.5')	
SSS-140	1+59.27	32'	2.00%	961.31+(3.5')	
SSS-150	2+12.20	42'	2.00%	964.16+(3.5')	
SSS-149	2+61.19	47'	2.00%	966.26+(3.5')	
SSS-141	2+90.98	32'	2.00%	967.00+(3.5')	
SSS-148	3+31.82	44'	2.00%	968.67+(3.5')	
SSS-147	1+79.01	41'	2.00%	968.64+(3.5')	
SSS-146	1+12.77	46'	2.00%	965.99+(3.5')	
SSS-142	1+41.80	42'	2.00%	967.11+(3.5')	
SSS-144	0+08.00	20'	2.00%	961.14+(3.5')	
SSS-145	0+39.72	59'	2.00%	963.22+(3.5')	
SSS-143	0+68.86	30'	2.00%	963.85+(3.5')	

SUMMIT HOMES KC
HIGHLAND MEADOWS - 5TH PLAT

SANITARY SEWER C AND D PLAN & PROFILE

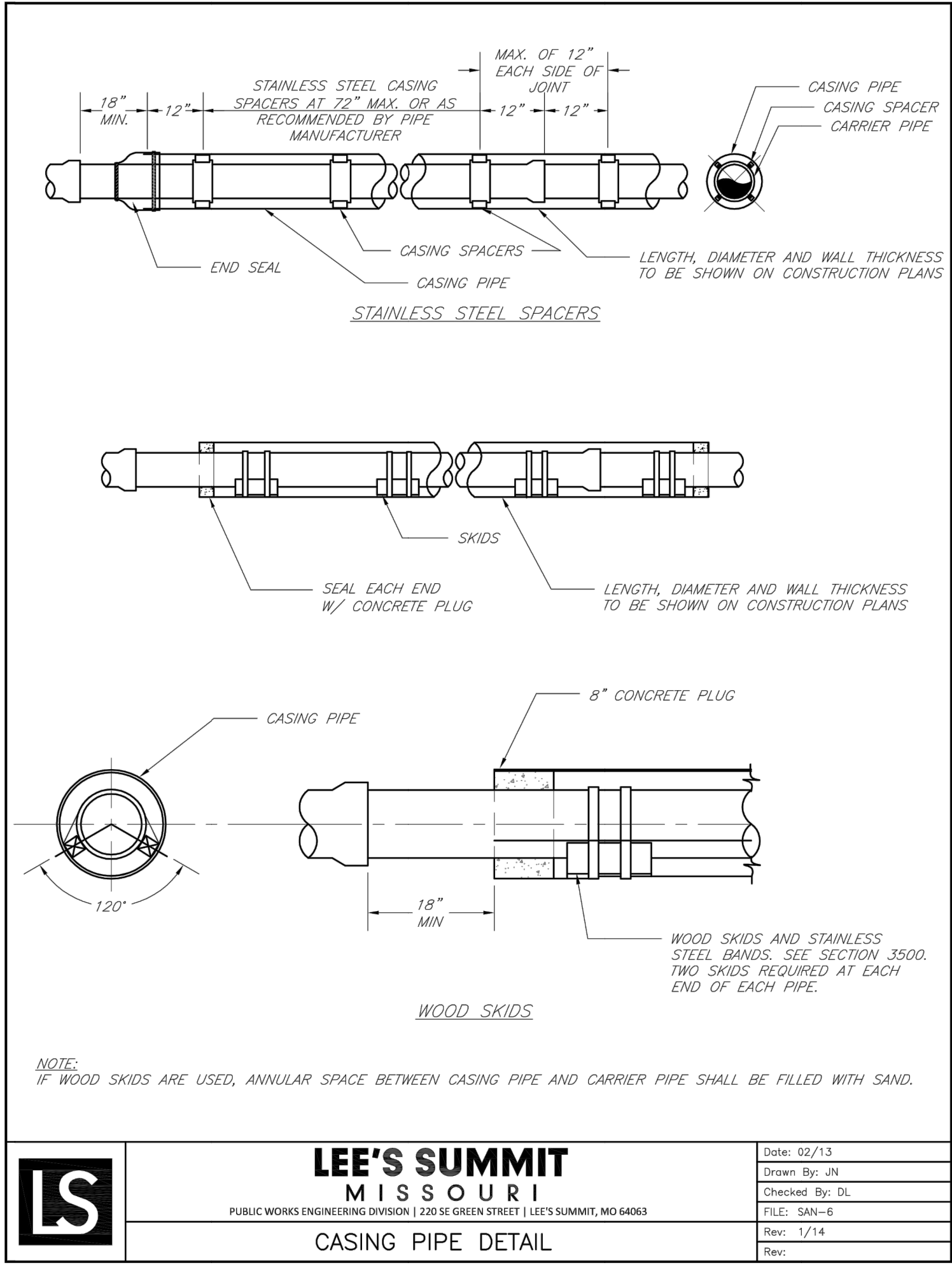
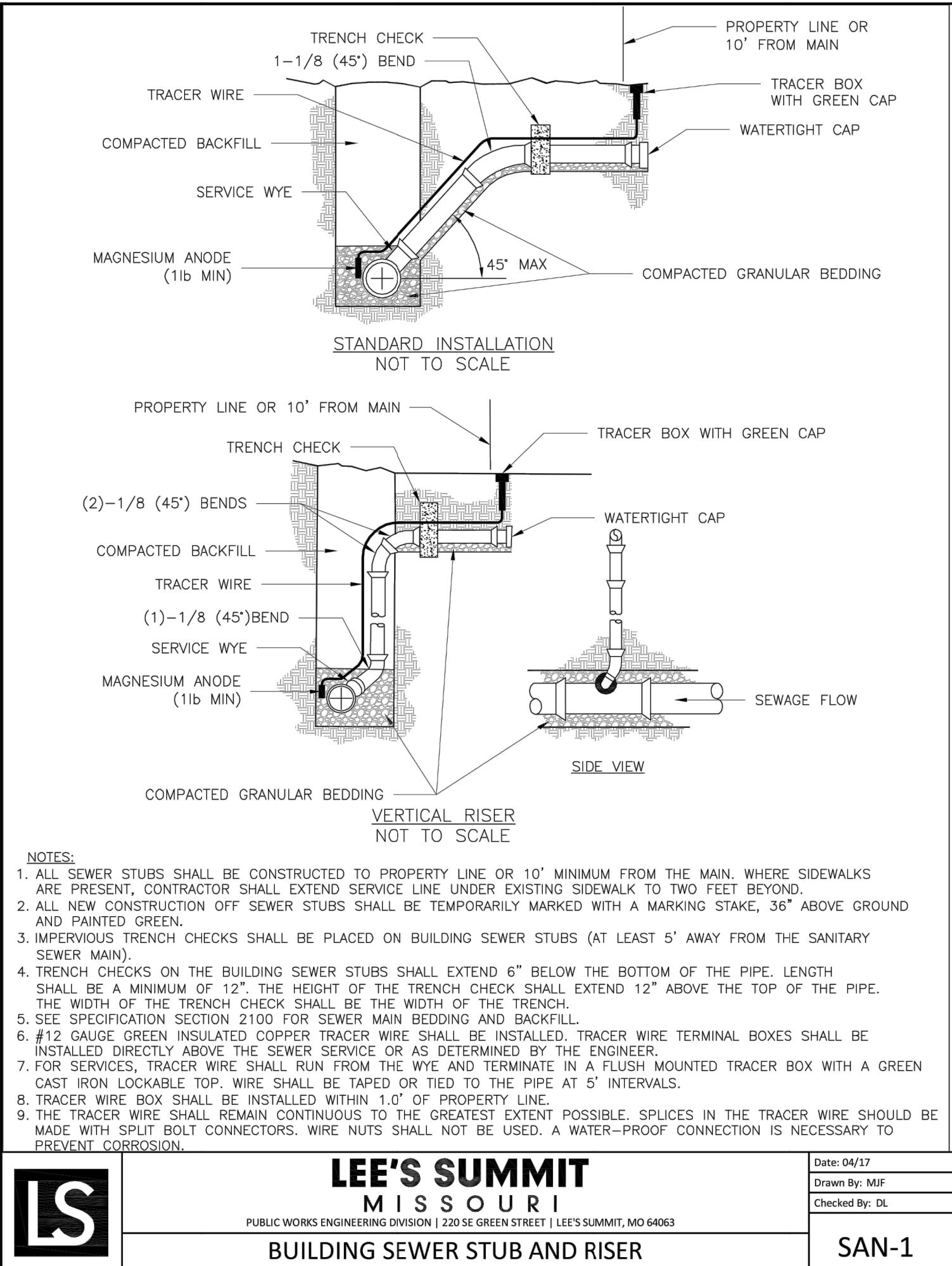
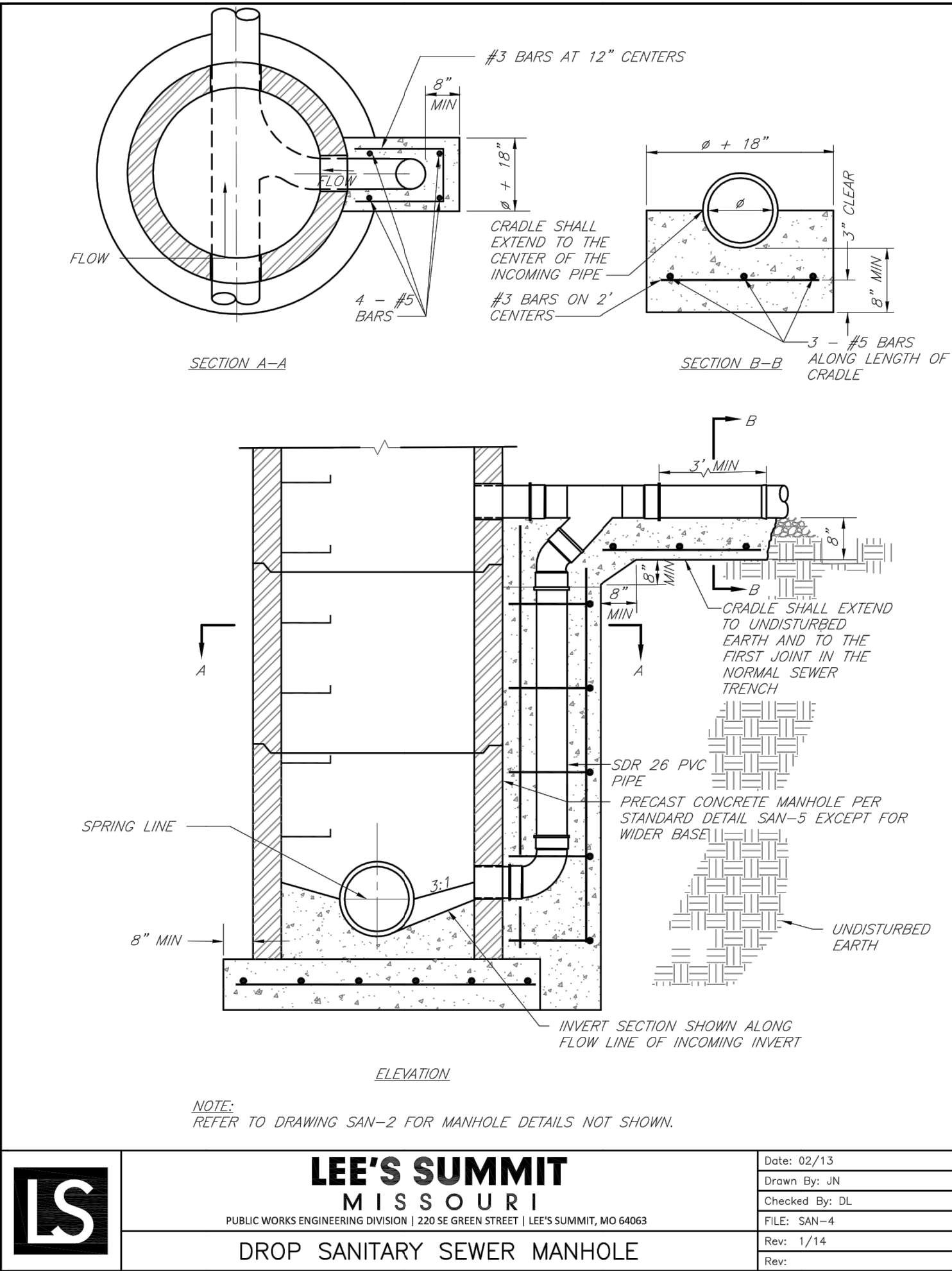
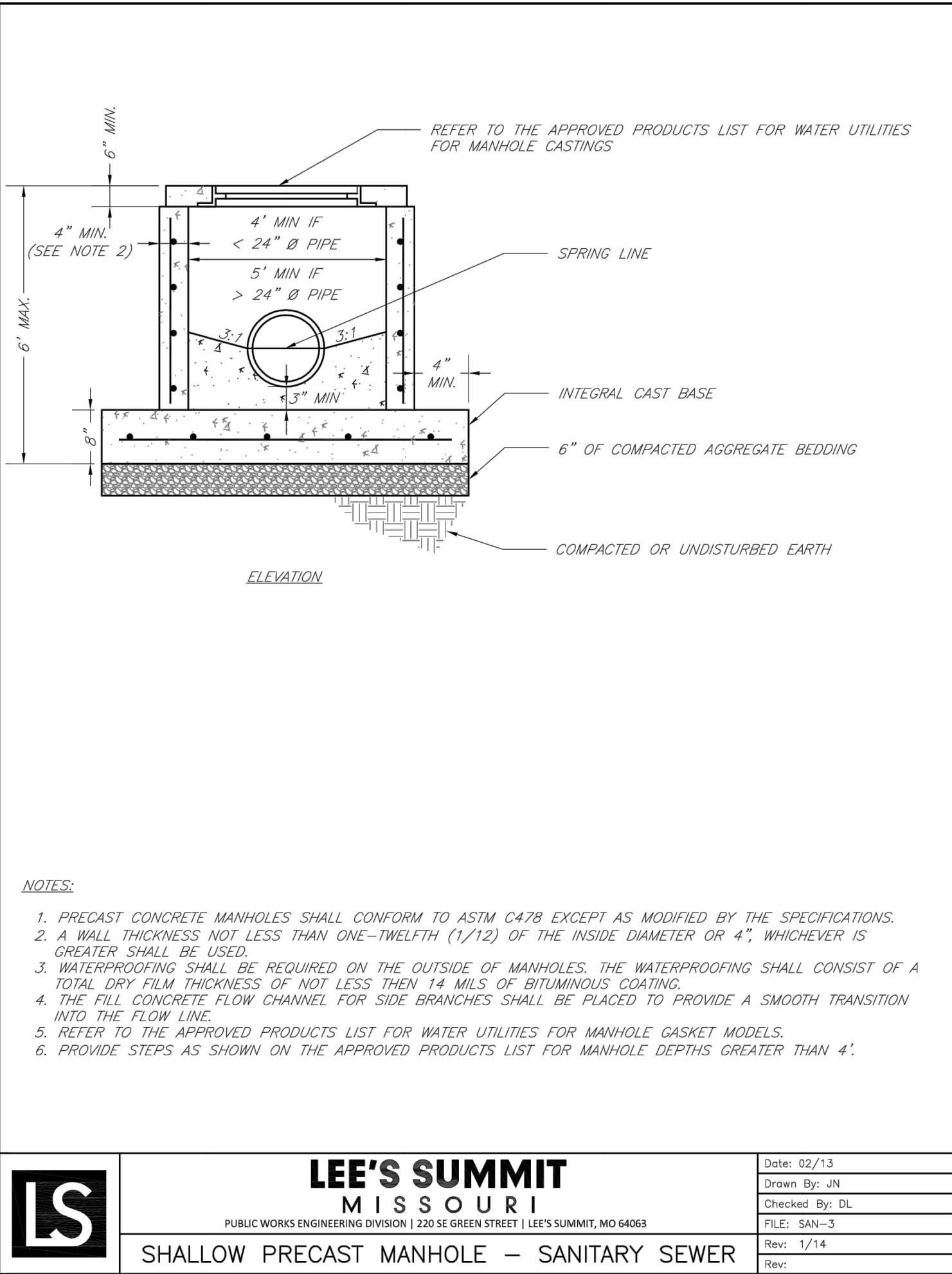
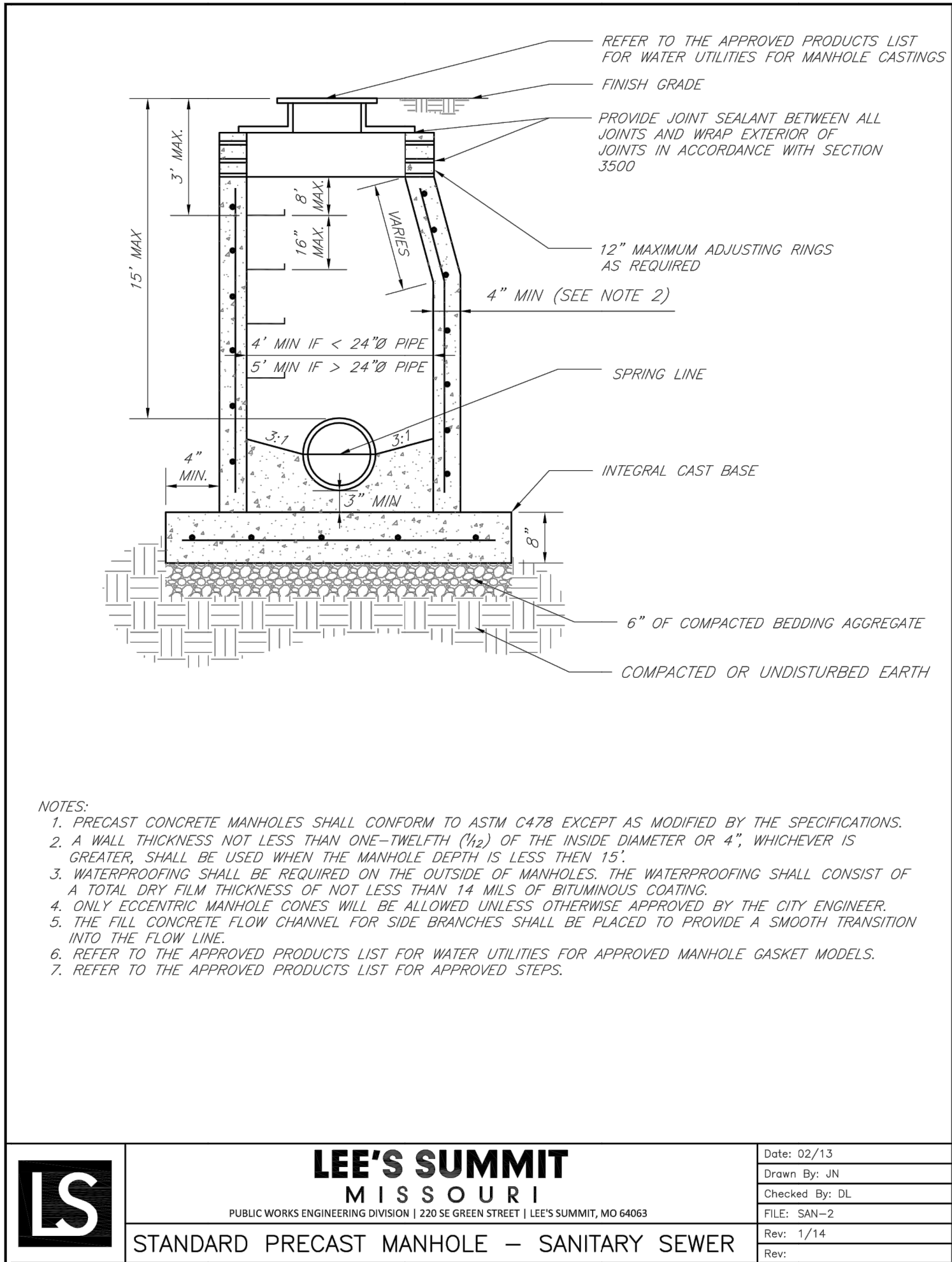


SHEET NUMBER
C103
4 OF 5

DRAWING INFO.					
NO.	BY	DATE	DRAWN BY:	GC	
			CHECK BY:	ZM	
			LICENSE NO.	PE-2012003232	
			DATE:	11/11/2020	
			ISSUED FOR:	FOR REVIEW	
© COPYRIGHT ANDERSON ENGINEERING, INC. 2020			JOB NUMBER:	20K10057	
			MO COA NO.	000062	

ANDERSON ENGINEERING
EMPLOYEE OWNED

ENGINEERS • SURVEYORS • LABORATORIES • DRILLING
811 E. THIRD STREET • JOPLIN, MISSOURI 64801 • PHONE (417) 782-7399
A LICENSED MISSOURI ENGINEERING & SURVEYING CORPORATION - LC 62



ANDERSON ENGINEERING
EMPLOYEE OWNED

AE

ENGINEERS • SURVEYORS • LABORATORIES • DRILLING
811 E. THIRD STREET • JOPLIN, MISSOURI 64801 • PHONE (417) 782-7389
A LICENSED MISSOURI ENGINEERING & SURVEYING CORPORATION - LC 82

DRAWING INFO.		BY		DATE		NO.	
DRAWN BY:	GC	CHECK BY:	ZM	LICENSE NO.	FE-2012003232	DATE:	11/11/2020
ISSUED FOR:	FOR REVIEW	JOB NUMBER:	20KCT0057	MO COA NO.:	00062		

SUMMIT HOMES KC
HIGHLAND MEADOWS - 5TH PLAT

SANITARY SEWER DETAILS

S10, T47N, R22W
LEE'S SUMMIT, JACKSON COUNTY, MISSOURI

STATE OF MISSOURI
ZACH A. MYERS
PROFESSIONAL ENGINEER
NUMBER
FE-2012009232
EXPIRATION
11/11/2020

SHEET NUMBER
C401
5 OF 5