

# ***TOWER/MOUNT MAPPING REPORT***

**Name:**

***A5C0198A***

**Site #:**

***A5C0198A***

**Date Site Was Visited:**

***6/6/2019***

**Prepared For:**

***ENGINEERING FIRM***

***PMA***

***TOWER OWNER/CARRIER***

***T-Mobile***

**Prepared By:**



**15225 Hwy 36 Suite 1  
Bennington, NE 68007-5163**

**Inspectors:**

**Garrett Stedman**

**Brandon Stork**

**Report Prepared By:**

**Travis Meays**

**Report Reviewed By:**

**Brandon Cool (402) 915-5337**



## **TOWER/MOUNT MAPPING REPORT**

Site Name: A5C0198A

Site #: A5C0198A

© PROPERTY OF HIGHTOWER SOLUTIONS INC.

### **SCOPE OF WORK**

#### **SCOPE OF WORK**

At the request of PM&A, field crews from HighTower Solutions Inc. in Bennington, NE performed a structural tower mapping for A5C0198A. The tower mapping was conducted to collect data for determining the tower's structural capacities and current antenna loading. The acquired data was transmitted to PM&A's offices for analysis. This document contains the results from the structural tower mapping.

#### **HIGHTOWER'S INFORMATION GATHERING METHODS**

HighTower Solutions Inc. uses the latest tools and technology to gather structural information. We use Ultrasonic Thickness Testing Equipment, Total Station Optical Transits, Dial Calipers, Handheld GPS Devices, Guy Tension Meters, and many other hand held tools. Every tool is inspected and calibrated at regular intervals. Our crews are trained in the operation of all tools and have hours of actual field operation experience.

#### **HIGHTOWER'S SAFETY PRACTICES**

HighTower Solutions Inc. carries out all work while staying in compliance with OSHA rules and regulations. We are a member of the National Association of Tower Erectors and multiple state associations. Our crews are equipped with the best safety equipment available, and travel to every site with the necessary equipment for any type of tower rescue. It is our passion to keep everyone safe! HighTower's employees have certifications in Tower Rescue, CPR, First Aid, RF Safety Training, OSHA Courses, and many other tool operating classes. Along with these certifications, we have two certified climb rescue instructors that hold tower rescue refresher courses monthly.





## TOWER/MOUNT MAPPING REPORT

Site Name: A5C0198A

Site #: A5C0198A

© PROPERTY OF HIGHTOWER SOLUTIONS INC.

### TOWER INFORMATION

#### IDENTIFICATION

<b>TOWER TYPE</b>	Monopole
<b>ADDRESS</b>	900 SW Blue Parkway Lee's Summit, Missouri
<b>FCC #</b>	1280041
<b>LATITUDE</b>	38.91026
<b>LONGITUDE</b>	-94.39126

#### TOWER TAG INFORMATION

N/A N/A



#### FULL VIEW OF TOWER



#### SITE SIGN



#### FCC SIGN





## TOWER/MOUNT MAPPING REPORT

Site Name: A5C0198A

Site #: A5C0198A

© PROPERTY OF HIGHTOWER SOLUTIONS INC.

### CARDINAL DIRECTION PICTURES



**NORTH VIEW**



**EAST VIEW**



**SOUTH VIEW**



**WEST VIEW**



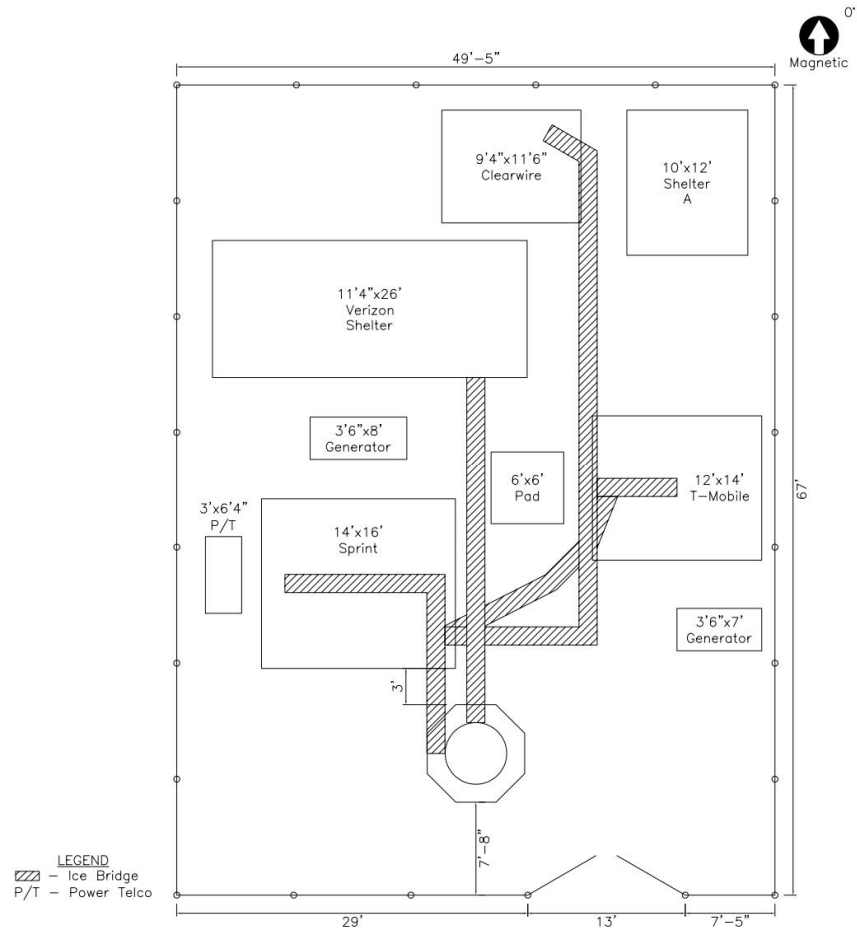
## TOWER/MOUNT MAPPING REPORT

Site Name: A5C0198A

Site #: A5C0198A

© PROPERTY OF HIGHTOWER SOLUTIONS INC.

### COMPOUND/SITE LAYOUT



COMPOUND PICTURE #1



COMPOUND PICTURE #2



# TOWER/MOUNT MAPPING REPORT

Site Name: A5C0198A

Site #: A5C0198A

© PROPERTY OF HIGHTOWER SOLUTIONS INC.

## ANTENNA INFORMATION SUMMARY

ANT. #	HEIGHT	ANTENNA	LEG/FACE & AZIMUTH	MOUNT TYPE	COAX INFO.	CARRIER
1	93'2"Center	3 QTY RFS Panel APXVSP18 5'10"Tx10"Wx8"	1 Per Sector 0°,120°,240°	(Base of Mount 89'10"/94'10") 5'2"Lsa/12'6"Lbm/12'6"Lhr 4"Sq.Tube/3.5"Dia.Pipe/ 2.38"Dia.Pipe	3 QTY Huber+Suhner Fiber 1.10" #43-#45	Sprint
2	91'8"Base	3 QTY Ericsson RRU RRUS 31 B25 17"Tx12"Wx9"	1 Per Sector	(Base of Mount 89'10"/94'10") 5'2"Lsa/12'6"Lbm/12'6"Lhr 4"Sq.Tube/3.5"Dia.Pipe/ 2.38"Dia.Pipe	3 QTY Huber+Suhner Fiber 1.10" #43-#45	Sprint
3	93'Base	3 QTY Ericsson RRU RRUS 11 B26A 17"Tx16"Wx7"	1 Per Sector	(Base of Mount 89'10"/94'10") 5'2"Lsa/12'6"Lbm/12'6"Lhr 4"Sq.Tube/3.5"Dia.Pipe/ 2.38"Dia.Pipe	3 QTY Huber+Suhner Fiber 1.10" #43-#45	Sprint
4	101'7"Center	3 QTY Panel 6'3"Tx12"Wx5"	A2,B1,G1 0°,120°,240°	See Mount Member Details	1 QTY Nokia Fiber 1.25" #1	T-Mobile
5	101'7"Center	3 QTY Panel 6'3"Tx12"Wx5" 3 Commscope QTY TMA's 10.25"Tx6.5"Wx3.5"/ ETW190VS12UB	A4,B3,G3 0°,120°,240°	See Mount Member Details	6 QTY Andrew AVA5-50 7/8" #2-#7	T-Mobile
6	101'7"Center	3 QTY Commscope Panel SBNHH-1D65C-SR 8'Tx11.5"Wx7.25"	A3,B2,G2 0°,120°,240°	See Mount Member Details	1 QTY Nokia Fiber 1.25" #1	T-Mobile
7	101'1"Center	1 QTY Panel 6'3"Tx6.5"Wx2.5" 1/N/A QTY TMA's 6'Tx8"Wx3"	A1 0°,120°,240°	See Mount Member Details	2 QTY Andrew AVA5-50 7/8" #8,#9	T-Mobile
8	98'5"Base	3 QTY Nokia RRU FHFB RRH 21"Tx12.5"Wx6.5"	A2,B1,G1	See Mount Member Details	1 QTY Nokia Fiber 1.25" #1	T-Mobile
9	98'8"Base	3 QTY Nokia RRU FRIG 20"Tx15.5"Wx6.5"	A3,B2,G2	See Mount Member Details	1 QTY Nokia Fiber 1.25" #1	T-Mobile
10	99'5"Base	1 QTY Raycap Squid RNSNDC-7771-PF-48 19"Tx15"Wx6"	160°	(Base of Mount Tower Mounted)	1 QTY Nokia Fiber 1.25" #1	T-Mobile
11	128'6"Base	3 QTY Samsung RRU SLS-BD106Q 21"Tx14"Wx8"	1 Per Sector	(Base of Mount 126'10"/125'10") 1'4"Lsa/7'Tpm 3.5"Dia.Pipe/3.5"Dia.Pipe	2 QTY Flex Conduit 2.5" #36,#37	Clearwire



# TOWER/MOUNT MAPPING REPORT

Site Name: A5C0198A

Site #: A5C0198A

© PROPERTY OF HIGHTOWER SOLUTIONS INC.

12	128'8"Center	3 QTY DualBand Panel LLPX310H-V4 3'6"Tx12"Wx4.75"	1 Per Sector 320°,80°,200°	(Base of Mount 126'10"/125'10") 1'4"Lsa/7'Tpm 3.5"Dia.Pipe/3.5"Dia.Pipe	2 QTY Flex Conduit 2.5" #36,#37	Clearwire
13	129'6"Center	1 QTY DragonWave Dish 16"Dia.	Alpha Sector 70°	(Base of Mount 126'10"/125'10") 1'4"Lsa/7'Tpm 3.5"Dia.Pipe/3.5"Dia.Pipe	1 QTY Eupen EC4-50-A 1/2" #38	Clearwire
14	128'6"Base	1 QTY Junction Box 12"Tx12"Wx6"	Gamma Sector	(Base of Mount 126'10"/125'10") 1'4"Lsa/7'Tpm 3.5"Dia.Pipe/3.5"Dia.Pipe	2 QTY Flex Conduit 2.5" #36,#37	Clearwire
15	129'6"Center	1 QTY Andrew Drum Dish Radio 11B TXL 3'Dia.	Gamma Sector 280°	(Base of Mount 126'10"/125'10") 1'4"Lsa/7'Tpm 3.5"Dia.Pipe/3.5"Dia.Pipe	1 QTY Eupen EC4-50-A 1/2" #39	Clearwire
16	129'6"Center	1 QTY Motorola Panel 14"Tx14"Wx4"	Beta Sector 160°	(Base of Mount 126'10"/125'10") 1'4"Lsa/7'Tpm 3.5"Dia.Pipe/3.5"Dia.Pipe	2 QTY Flex Conduit 2.5" #36,#37	Clearwire
17	132'9"Base	3 QTY Ericsson RRU RRUS 31 B25 16"Tx12"Wx8"	1 Per Sector	(Base of Mount 131'/135') 5'8"Lsa/13'6"Lbm/15'Lhr 6"x3"Tube/3.5"Dia.Pipe/ 2.38"Dia.Pipe	3 QTY Amphenol Fiber 1.5" #40-#42	Clearwire
18	133'5"Base	3 QTY Ericsson RRU RRUS 11 B26A 17"Tx17"Wx7"	1 Per Sector	(Base of Mount 131'/135') 5'8"Lsa/13'6"Lbm/15'Lhr 6"x3"Tube/3.5"Dia.Pipe/ 2.38"Dia.Pipe	3 QTY Amphenol Fiber 1.5" #40-#42	Clearwire
19	134'1"Center	3 QTY RFS Panel APXVSP18 5'10"Tx10"Wx8"	1 Per Sector 320°,80°,200°	(Base of Mount 131'/135') 5'8"Lsa/13'6"Lbm/15'Lhr 6"x3"Tube/3.5"Dia.Pipe/ 2.38"Dia.Pipe	3 QTY Amphenol Fiber 1.5" #40-#42	Clearwire
20	144'Base	3 QTY Ericsson RRU RRUS 12 B4 18"Tx18"Wx7"	1 Per Sector	(Base of Mount 144'7"/143'4") 7"Lsa/3'Tpm 4"Sq.Tube/2.38"Dia.Pipe	1/1 QTY RFS Fiber 1 1/4" #34,#35	Verizon
21	144'3"Base	1 QTY Raycap Squid RRFDC-3315-PF-48 19"Tx15"Wx10"	Alpha Sector	(Base of Mount 144'7"/143'4") 7"Lsa/3'Tpm 4"Sq.Tube/2.38"Dia.Pipe	1/1 QTY RFS Fiber 1 1/4" #34,#35	Verizon
22	148'1"Center	3 QTY Commscope Panel LNX-6515DS-A1M 8'Tx12"Wx7" 6 QTY TMA's 8"Tx6"Wx3"	1 Per Sector 0°,120°,240°	(Base of Mount 147'9") 5'5"Lsa/13'Lbm 4"Sq.Tube/3.5"Dia.Pipe	6 QTY Andrew AVA7-50 1 5/8" #16-#21	Verizon
23	148'1"Center	3 QTY Commscope Panel LNX-6515DS-A1M 8'Tx12"Wx7"	1 Per Sector 0°,120°,240°	(Base of Mount 147'9") 5'5"Lsa/13'Lbm 4"Sq.Tube/3.5"Dia.Pipe	1/1 QTY RFS Fiber 1 1/4" #34,#35	Verizon



# TOWER/MOUNT MAPPING REPORT

Site Name: A5C0198A

Site #: A5C0198A

© PROPERTY OF HIGHTOWER SOLUTIONS INC.

24	148'4"Center	3 QTY Amphenol Panel BXA-171063-12CF-EDIN-2 6'Tx6"Wx4" 6 ADC QTY TMA's 12"Tx11"Wx3"	1 Per Sector 0°,120°,240°	(Base of Mount 147'9") 5'5"Lsa/13'Lbm 4"Sq.Tube/3.5"Dia.Pipe	6 QTY Andrew AVA7-50 1 5/8" #22-#27	Verizon
25	148'4"Center	3 QTY Amphenol Panel BXA-171063-12CF-EDIN-2 6'Tx6"Wx4"	1 Per Sector	(Base of Mount 147'9") 5'5"Lsa/13'Lbm 4"Sq.Tube/3.5"Dia.Pipe	1/1 QTY RFS Fiber 1 1/4" #34,#35	Verizon
26	149'Base	3 QTY Ericsson RRU RRUS 11 B13 17"Tx17"Wx7"	1 Per Sector	(Base of Mount 147'9") 5'5"Lsa/13'Lbm 4"Sq.Tube/3.5"Dia.Pipe	1/1 QTY RFS Fiber 1 1/4" #34,#35	Verizon
27	149'Base	3 QTY Ericsson RRU Extension RRUS A2 B13 13"Tx15"Wx3"	1 Per Sector	(Base of Mount 147'9") 5'5"Lsa/13'Lbm 4"Sq.Tube/3.5"Dia.Pipe	1/1 QTY RFS Fiber 1 1/4" #34,#35	Verizon
28	149'Base	1 QTY Raycap Squid RRFDC-3315-PF-48 19"Tx15"Wx10"	Beta Sector	(Base of Mount 147'9") 5'5"Lsa/13'Lbm 4"Sq.Tube/3.5"Dia.Pipe	1/1 QTY RFS Fiber 1 1/4" #34,#35	Verizon



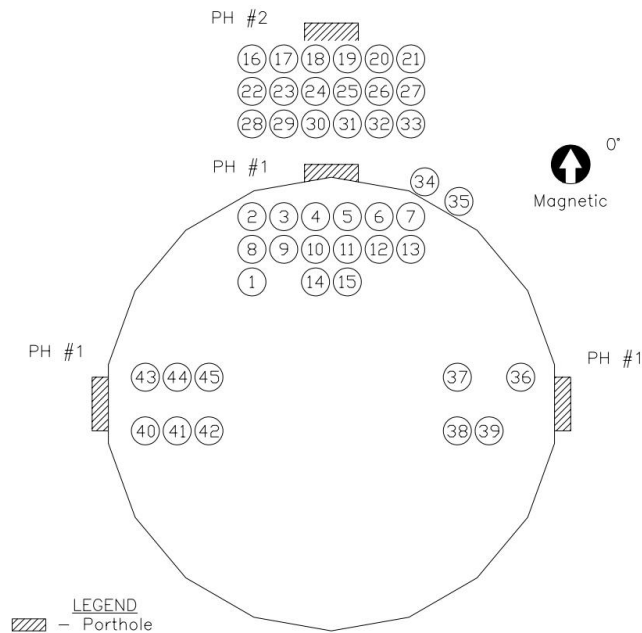
# TOWER/MOUNT MAPPING REPORT

Site Name: A5C0198A

Site #: A5C0198A

© PROPERTY OF HIGHTOWER SOLUTIONS INC.

## COAX INFORMATION



STEP BOLT INFORMATION		CLIMB LADDER INFORMATION	
START/STOP HEIGHT	10'9"/Top of Tower	START/STOP HEIGHT	N/A
LOCATION	90°	LOCATION	N/A
BOLT DIAMETER	.62"	RUNG SIZE	N/A
BOLT LENGTH	7"	RUNNER SIZE	N/A
SPACING	30"	LADDER WIDTH	N/A
SAFETY CLIMB	Yes	SPACING	N/A
		SAFETY CLIMB	N/A

## COAX DETAILS

COAX #	SIZE	MANUFACTURER	MODEL	CARRIER	ANTENNA
#1	1.25"	Nokia	Fiber	T-Mobile	#4,#6,#8-#10
#2	7/8"	Andrew	AVA5-50	T-Mobile	#5
#3	7/8"	Andrew	AVA5-50	T-Mobile	#5
#4	7/8"	Andrew	AVA5-50	T-Mobile	#5
#5	7/8"	Andrew	AVA5-50	T-Mobile	#5
#6	7/8"	Andrew	AVA5-50	T-Mobile	#5
#7	7/8"	Andrew	AVA5-50	T-Mobile	#5
#8	7/8"	Andrew	AVA5-50	T-Mobile	#7
#9	7/8"	Andrew	AVA5-50	T-Mobile	#7
#10	7/8"	Andrew	AVA5-50	T-Mobile	Term. at Mount
#11	7/8"	Andrew	AVA5-50	T-Mobile	Term. at Mount
#12	7/8"	Andrew	AVA5-50	T-Mobile	Term. at Mount



## TOWER/MOUNT MAPPING REPORT

Site Name: A5C0198A

Site #: A5C0198A

© PROPERTY OF HIGHTOWER SOLUTIONS INC.

#13	7/8"	Andrew	AVA5-50	T-Mobile	Term. at Mount
#14	7/8"	Andrew	AVA5-50	T-Mobile	Term. at Mount
#15	7/8"	Andrew	AVA5-50	T-Mobile	Term. at Mount
#16	1 5/8"	Andrew	AVA7-50	Verizon	#22
#17	1 5/8"	Andrew	AVA7-50	Verizon	#22
#18	1 5/8"	Andrew	AVA7-50	Verizon	#22
#19	1 5/8"	Andrew	AVA7-50	Verizon	#22
#20	1 5/8"	Andrew	AVA7-50	Verizon	#22
#21	1 5/8"	Andrew	AVA7-50	Verizon	#22
#22	1 5/8"	Andrew	AVA7-50	Verizon	#24
#23	1 5/8"	Andrew	AVA7-50	Verizon	#24
#24	1 5/8"	Andrew	AVA7-50	Verizon	#24
#25	1 5/8"	Andrew	AVA7-50	Verizon	#24
#26	1 5/8"	Andrew	AVA7-50	Verizon	#24
#27	1 5/8"	Andrew	AVA7-50	Verizon	#24
#28	1 5/8"	Andrew	AVA7-50	Verizon	Term. at 148'
#29	1 5/8"	Andrew	AVA7-50	Verizon	Term. at 148'
#30	1 5/8"	Andrew	AVA7-50	Verizon	Term. at 148'
#31	1 5/8"	Andrew	AVA7-50	Verizon	Term. at 148'
#32	1 5/8"	Andrew	AVA7-50	Verizon	Term. at 148'
#33	1 5/8"	Andrew	AVA7-50	Verizon	Term. at 148'
#34	1 1/4"	RFS	Fiber	Verizon	#20,#21,#23, #25-#28
#35	1 5/8"	RFS	Fiber	Verizon	#20,#21,#23, #25-#28
#36	2.5"	Flex Conduit	N/A	Clearwire	#11,#12,#14,#16
#37	2.5"	Flex Conduit	N/A	Clearwire	#11,#12,#14,#16
#38	1/2"	Eupen	EC4-50-A	Clearwire	#13
#39	1/2"	Eupen	EC4-50-A	Clearwire	#15
#40	1.5"	Amphenol	Fiber	Clearwire	#17-#19
#41	1.5"	Amphenol	Fiber	Clearwire	#17-#19
#42	1.5"	Amphenol	Fiber	Clearwire	#17-#19
#43	1.10"	Huber+Suhner	Fiber	Sprint	#1-#3
#44	1.10"	Huber+Suhner	Fiber	Sprint	#1-#3
#45	1.10"	Huber+Suhner	Fiber	Sprint	#1-#3





## TOWER/MOUNT MAPPING REPORT

Site Name: A5C0198A

Site #: A5C0198A

© PROPERTY OF HIGHTOWER SOLUTIONS INC.

### PICTURES UP FACES AND COAX ROUTING FROM TOWER



**NORTH UP FACE**



**COAX TO T-MOBILE CAB**



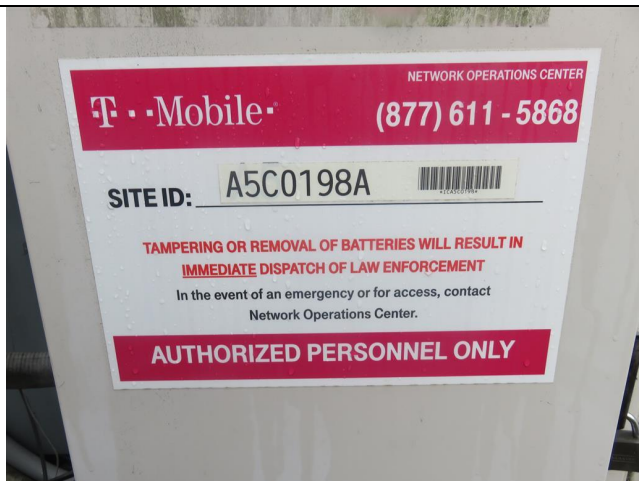
**COAX TO T-MOBILE CAB**



**COAX ENTERING T-MOBILE CAB**



**COAX ENTERING T-MOBILE CAB**



**T-MOBILE CAB SIGN**





## TOWER/MOUNT MAPPING REPORT

Site Name: A5C0198A

Site #: A5C0198A

© PROPERTY OF HIGHTOWER SOLUTIONS INC.

### PICTURES UP FACES AND COAX ROUTING FROM TOWER



**T-MOBILE CAB**



**COAX TO VERIZON SHELTER**



**COAX TO VERIZON SHELTER**



**COAX ENTERING VERIZON SHELTER**



**VERIZON SHELTER SIGN**



**VERIZON SHELTER**





## TOWER/MOUNT MAPPING REPORT

Site Name: A5C0198A

Site #: A5C0198A

© PROPERTY OF HIGHTOWER SOLUTIONS INC.

### PICTURES UP FACES AND COAX ROUTING FROM TOWER



**EAST UP FACE**



**COAX TO CLEARWIRE CAB**



**COAX ENTERING CLEARWIRE CAB**



**CLEARWIRE CAB**



**SOUTH UP FACE**



**WEST UP FACE**



## TOWER/MOUNT MAPPING REPORT

Site Name: A5C0198A

Site #: A5C0198A

© PROPERTY OF HIGHTOWER SOLUTIONS INC.

### PICTURES UP FACES AND COAX ROUTING FROM TOWER



COAX TO CLEARWIRE CAB



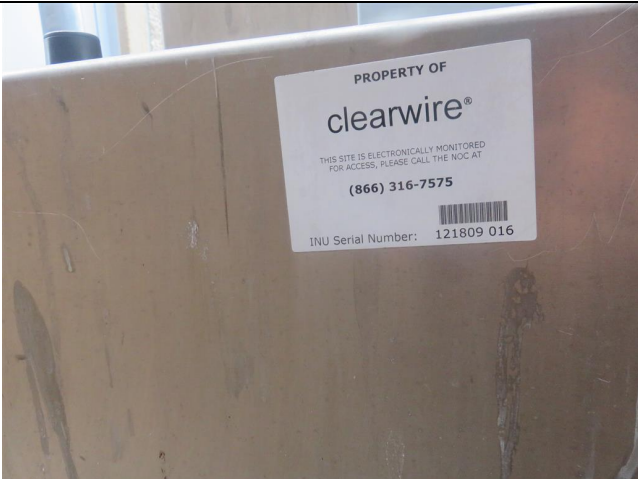
COAX TO CLEARWIRE CAB



COAX TO CLEARWIRE CAB



COAX ENTERING CLEARWIRE CAB



CLEARWIRE CAB SIGN



CLEARWIRE CAB





# TOWER/MOUNT MAPPING REPORT

Site Name: A5C0198A

Site #: A5C0198A

© PROPERTY OF HIGHTOWER SOLUTIONS INC.

## PICTURES UP FACES AND COAX ROUTING FROM TOWER



COAX TO SPRINT CAB



COAX TO SPRINT CAB



COAX ENTERING SPRINT CAB



SPRINT CAB SIGN



SPRINT CAB



N/A



# TOWER/MOUNT MAPPING REPORT

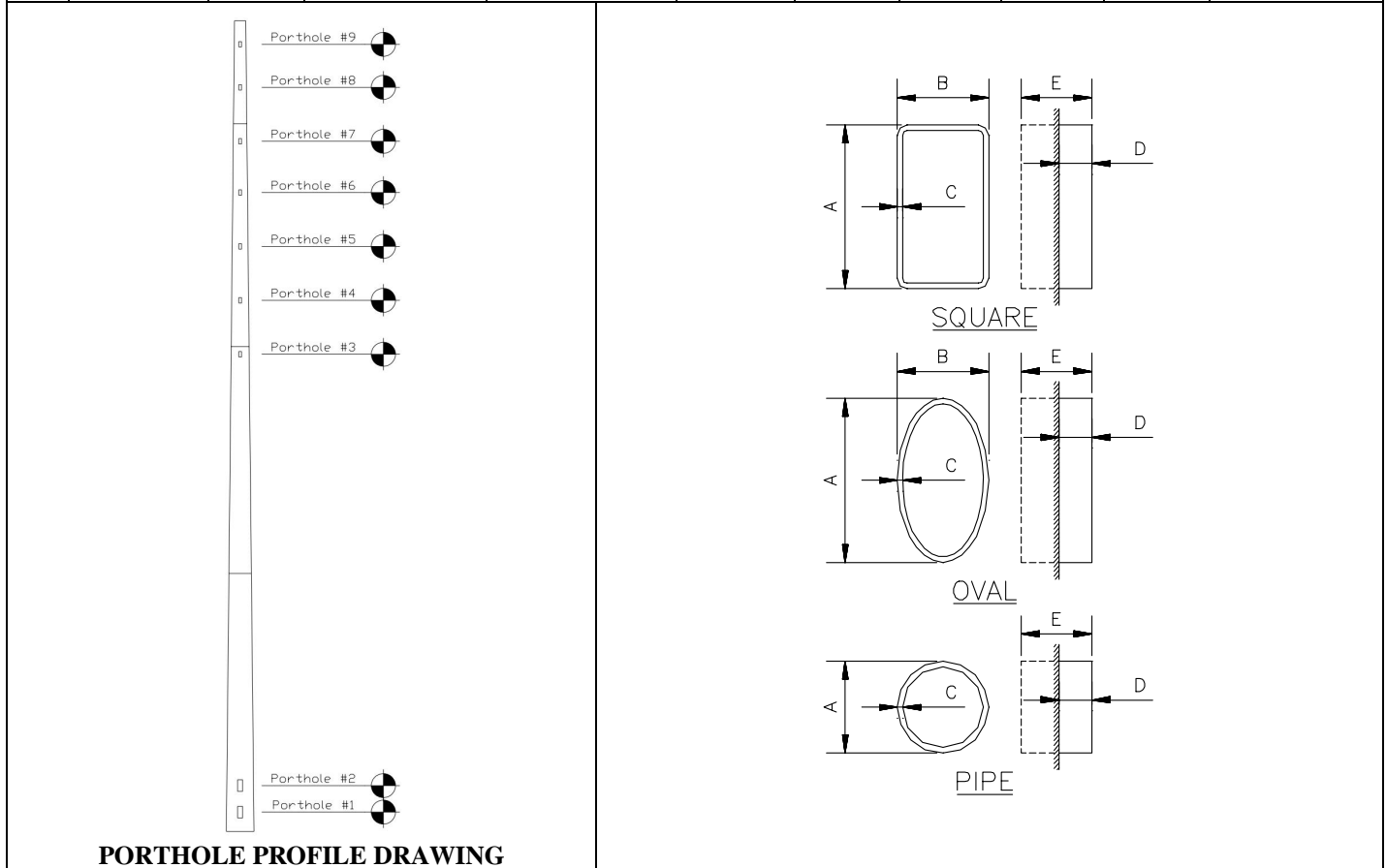
Site Name: A5C0198A

Site #: A5C0198A

© PROPERTY OF HIGHTOWER SOLUTIONS INC.

## PORTHOLE SUMMARY

#	HEIGHT (CENTER HEIGHT MEASUREME NT UNLESS OTHERWISE NOTED)	QTY	AZIMUTH	SHAPE	A	B	C	D	E	IN USE ?
1	3'7"	4	0°,90°,180°,270°	Rectangle	2'10"	18"	1.05"	3.5"	6"	Yes, Yes, No, Yes
2	8'6"	4	0°,90°,180°,270°	Rectangle	2'10"	18"	1.05"	3.5"	6"	Yes, No, No, No
3	88'6"	3	20°,140°,260°	Rectangle	20"	8.25"	.62"	2"	4"	Yes, Yes, Yes
4	98'6"	3	20°,140°,260°	Rectangle	20"	8.25"	.62"	2"	4"	Yes, Yes, Yes
5	108'6"	3	20°,140°,260°	Rectangle	20"	8.25"	.62"	2"	4"	No, No, No
6	118'6"	3	20°,140°,260°	Rectangle	20"	8.25"	.62"	2"	4"	No, No, No
7	128'	3	20°,140°,260°	Rectangle	20"	8.25"	.62"	2"	4"	Yes, No, Yes
8	138'	3	20°,140°,260°	Rectangle	20"	8.25"	.62"	2"	4"	No, No, No
9	146'	3	20°,140°,260°	Rectangle	20"	8.25"	.62"	2"	4"	Yes, Yes, Yes



PORTHOLE PROFILE DRAWING





## TOWER/MOUNT MAPPING REPORT

Site Name: A5C0198A

Site #: A5C0198A

© PROPERTY OF HIGHTOWER SOLUTIONS INC.

### PORTHOLE PICTURES



**PORTHOLE #1**



**PORTHOLE #1**



**PORTHOLE #2**



**PORTHOLE #2**



**PORTHOLE #3**



**PORTHOLE #3**





## TOWER/MOUNT MAPPING REPORT

Site Name: A5C0198A

Site #: A5C0198A

© PROPERTY OF HIGHTOWER SOLUTIONS INC.

### PORTHOLE PICTURES



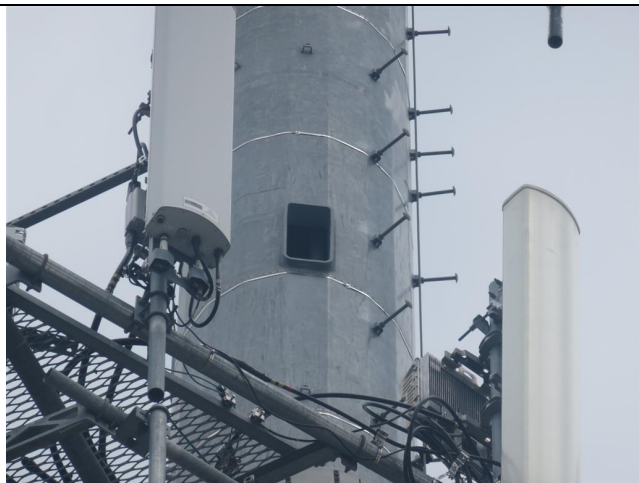
**PORTHOLE #4**



**PORTHOLE #4**



**PORTHOLE #5**



**PORTHOLE #5**



**PORTHOLE #6**



**PORTHOLE #6**





## TOWER/MOUNT MAPPING REPORT

Site Name: A5C0198A

Site #: A5C0198A

© PROPERTY OF HIGHTOWER SOLUTIONS INC.

### PORTHOLE PICTURES



**PORTHOLE #7**



**PORTHOLE #7**



**PORTHOLE #8**



**PORTHOLE #8**



**PORTHOLE #9**



**PORTHOLE #9**





## TOWER/MOUNT MAPPING REPORT

Site Name: A5C0198A

Site #: A5C0198A

© PROPERTY OF HIGHTOWER SOLUTIONS INC.

### TOWER PICTURES



FULL VIEW OF TOWER



TOP HALF OF TOWER



BOTTOM HALF OF TOWER



# TOWER/MOUNT MAPPING REPORT

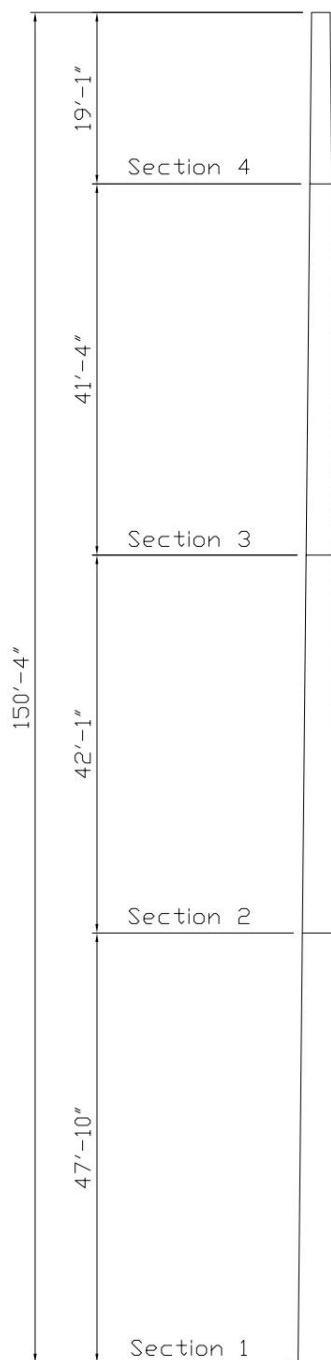
Site Name: A5C0198A

Site #: A5C0198A

© PROPERTY OF HIGHTOWER SOLUTIONS INC.

## TOWER PROFILE DETAIL

SECTION #6	Circum. Top of Section	
	Thickness(1,2,3)	
	Section Stamp	
	Circum. Base	
	Side length Base	
	# of Sides	
SECTION #5	Circum. Top of Section	
	Thickness(1,2,3)	
	Section Stamp	
	Circum. Base	
	Side length Base	
	# of Sides	
SECTION #4	Circum. Top of Section	6'6"
	Thickness(1,2,3)	.252", .252", .253"
	Section Stamp	4711-1-1-1
	Circum. Base	9'9"
	Side length Base	6.5"
	# of Sides	18
SECTION #3	Circum. Top of Section	9'3"
	Thickness(1,2,3)	.251", .251", .258"
	Section Stamp	4711-1-1-2
	Circum. Base	11'
	Side length Base	7"
	# of Sides	18
SECTION #2	Circum. Top of Section	10'8"
	Thickness(1,2,3)	.317", .318", .320"
	Section Stamp	4711-1-1-3
	Circum. Base	13'7"
	Side length Base	9"
	# of Sides	18
SECTION #1	Circum. Top of Section	13'6"
	Thickness(1,2,3)	.381", .381", .380"
	Section Stamp	4711-1-1-4/149'-0"
	Circum. Base	16'
	Side length Base	10.5"
	# of Sides	18"



Note: For each Section,  
Thickness 1 is taken at bottom  
Thickness 2 is taken at middle  
Thickness 3 is taken at top



# TOWER/MOUNT MAPPING REPORT

Site Name: A5C0198A

Site #: A5C0198A

© PROPERTY OF HIGHTOWER SOLUTIONS INC.

## MOUNT MEMBER DETAILS

	MOUNT	1	OF	7		
					Mount Overview Detail	
	Foundation A.G.L.	9"	<p>0° Magnetic</p> <p>Legend</p> <ul style="list-style-type: none"><li>- Antenna #4</li><li>- Antenna #5</li><li>- Antenna #6</li><li>- Antenna #7</li><li>- Antenna #8</li><li>- Antenna #9</li><li>- Antenna #10</li><li>- Antenna #5 TMA</li><li>- Antenna #7 TMA</li></ul>			
	Antenna Measurements taken from	Ground				
	Height to Bottom of Collar Mount	96'5"				
	Height to Bottom of Side Arm	96'5"				
	Height to Bottom of Boom	96'5"				
	Azimuths					
	Side Arm					
	Alpha	0°				
	Beta	120°				
	Gamma	240°				
	Boom					
	Alpha	0°				
	Beta	120°				
	Gamma	240°				
			Typical Abbreviations			
			LLV	Long Leg Vertical	SB	Stitch Bolt
			LLH	Long Leg Horizontal	SBS	Stitch Bolt Spacing
			DA	Double Angle	MB	Middle Bolt







# TOWER/MOUNT MAPPING REPORT

Site Name: A5C0198A

Site #: A5C0198A

© PROPERTY OF HIGHTOWER SOLUTIONS INC.

## MOUNT MEMBER DETAILS

MOUNT 4 OF 7

Member Size

Bolt Size

Boom Detail

A 14'6"L/3.5"Dia.Pipe x.25" 1-.50"U-Bolt

Front Elevation

A

### Typical Abbreviations

LLV	Long Leg Vertical	SB	Stitch Bolt
LLH	Long Leg Horizontal	SBS	Stitch Bolt Spacing
DA	Double Angle	MB	Middle Bolt



# TOWER/MOUNT MAPPING REPORT

Site Name: A5C0198A

Site #: A5C0198A

© PROPERTY OF HIGHTOWER SOLUTIONS INC.

## MOUNT MEMBER DETAILS

MOUNT 5 OF 7

Member Size

Bolt Size

Alpha Pipe Mount Detail

A 8"Tx6"Wx.38"Flat 2-.50"U-Bolts

B 8'T/2.38"Dia.Pipe x.15" 2-.50"U-Bolts

M1 4"

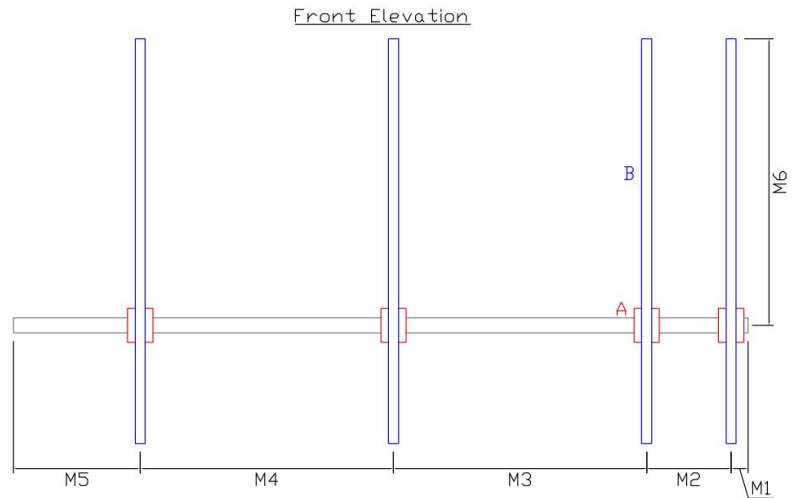
M2 20"

M3 5'

M4 5'

M5 2'6"

M6 5'8"



### Typical Abbreviations

LLV	Long Leg Vertical	SB	Stitch Bolt
LLH	Long Leg Horizontal	SBS	Stitch Bolt Spacing
DA	Double Angle	MB	Middle Bolt



# TOWER/MOUNT MAPPING REPORT

Site Name: A5C0198A

Site #: A5C0198A

© PROPERTY OF HIGHTOWER SOLUTIONS INC.

## MOUNT MEMBER DETAILS

MOUNT 6 OF 7

Member Size

Bolt Size

Beta & Gamma Pipe Mount Detail

A 8"Tx6"Wx.38"Flat 2-.50"U-Bolts

B 8'T/2.38"Dia.Pipe x.15" 2-.50"U-Bolts

M1 2'4"

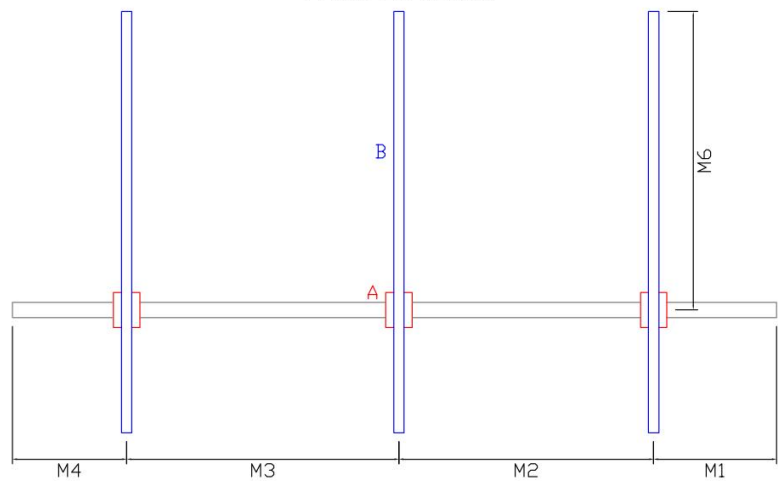
M2 4'10"

M3 5'2"

M4 2'2"

M5 5'8"

Front Elevation



### Typical Abbreviations

LLV	Long Leg Vertical	SB	Stitch Bolt
LLH	Long Leg Horizontal	SBS	Stitch Bolt Spacing
DA	Double Angle	MB	Middle Bolt





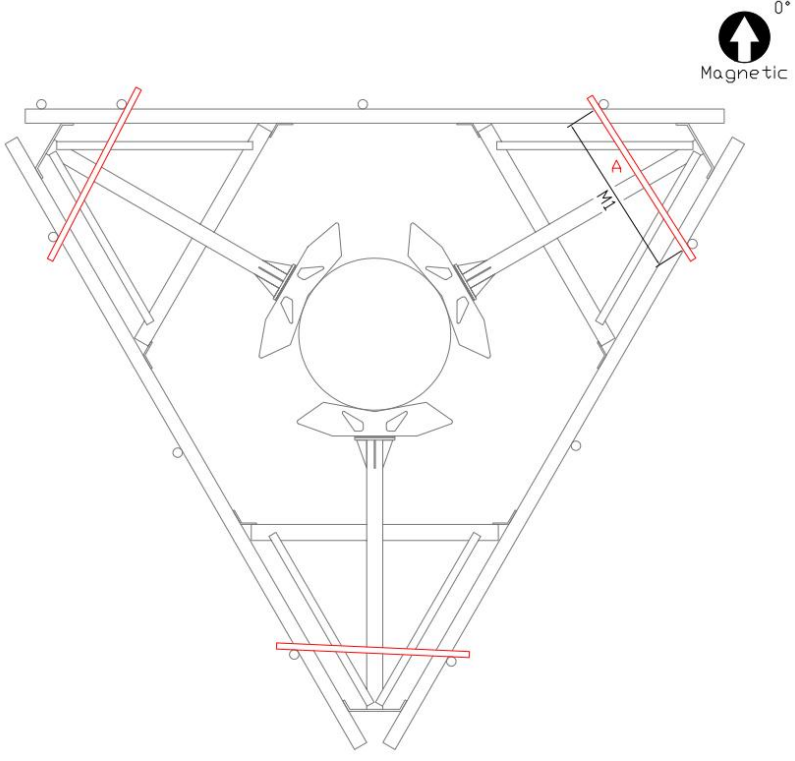
# TOWER/MOUNT MAPPING REPORT

Site Name: A5C0198A

Site #: A5C0198A

© PROPERTY OF HIGHTOWER SOLUTIONS INC.

## MOUNT MEMBER DETAILS

MOUNT 7 OF 7			
	Member Size	Bolt Size	Stiff Arm Detail
A	4'L/1.5"x1.5"x.20"Unistrut	1-.50"U-Bolt	
M1	3'1"		
			Typical Abbreviations
			LLV Long Leg Vertical SB Stitch Bolt
			LLH Long Leg Horizontal SBS Stitch Bolt Spacing
			DA Double Angle MB Middle Bolt



# TOWER/MOUNT MAPPING REPORT

Site Name: A5C0198A

Site #: A5C0198A

© PROPERTY OF HIGHTOWER SOLUTIONS INC.

## FOUNDATION AND BASE PLATE DETAILS

### FOUNDATION DETAILS

<b>A</b>	A.G.L.	9"
<b>B</b>	GAP or Grout	3.75"Gap
<b>C</b>	Diameter or Circumference	N/A
<b>D</b>	Length of Sides	8 Sides-40"
<b>-</b>	General Condition	Good

### BASE PLATE DETAILS

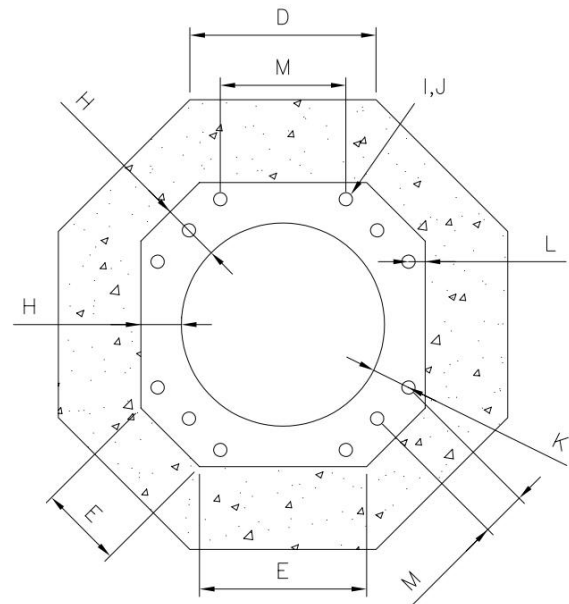
<b>E</b>	Length Of Sides	4-3'4.5"/4-16.5"
<b>F</b>	Diameter/ Circumference	N/A
<b>G</b>	Plate Thickness	2.5"
<b>H</b>	Edge of Plate to Tower Leg	2.5"/7"
<b>-</b>	Weld Height	2.90"

### BOLT INFORMATION

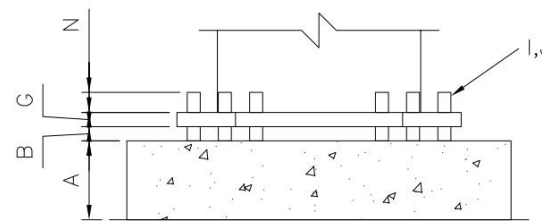
<b>I</b>	Bolts (QTY/SIZE)	12/2.20"
<b>J</b>	Size of Nut	3.5"
<b>K</b>	Tower To Center of Bolt	3.5"
<b>L</b>	Edge of Plate to Center of Bolt	4.5"
<b>M</b>	Bolt to Bolt	6"/3'2"
<b>N</b>	Bolt Projection	5.5"

### GUSSET INFORMATION

<b>O</b>	QTY/SIZE	N/A
----------	----------	-----



PLAN VIEW



ELEVATION VIEW



PICTURE #1 (CLOSE UP)



PICTURE #2 (PERPENDICULAR FROM #1)



## TOWER/MOUNT MAPPING REPORT

Site Name: A5C0198A

Site #: A5C0198A

© PROPERTY OF HIGHTOWER SOLUTIONS INC.

### SITE PICTURES



SITE SIGN



FCC SIGN



ENTERING COMPOUND



BASE PLATE





## TOWER/MOUNT MAPPING REPORT

Site Name: A5C0198A

Site #: A5C0198A

© PROPERTY OF HIGHTOWER SOLUTIONS INC.



BASE PLATE



BASE PLATE



FIRST 10'



NORTH UP FACE



## TOWER/MOUNT MAPPING REPORT

Site Name: A5C0198A

Site #: A5C0198A

© PROPERTY OF HIGHTOWER SOLUTIONS INC.



COAX TO T-MOBILE CAB

COAX TO T-MOBILE CAB



COAX ENTERING T-MOBILE CAB



COAX ENTERING T-MOBILE CAB





## TOWER/MOUNT MAPPING REPORT

Site Name: A5C0198A

Site #: A5C0198A

© PROPERTY OF HIGHTOWER SOLUTIONS INC.



T-MOBILE CAB SIGN



T-MOBILE CAB



COAX TO VERIZON SHELTER



COAX TO VERIZON SHELTER



## TOWER/MOUNT MAPPING REPORT

Site Name: A5C0198A

Site #: A5C0198A

© PROPERTY OF HIGHTOWER SOLUTIONS INC.



COAX ENTERING VERIZON SHELTER



VERIZON SHELTER SIGN



VERIZON SHELTER



EAST UP FACE





## TOWER/MOUNT MAPPING REPORT

Site Name: A5C0198A

Site #: A5C0198A

© PROPERTY OF HIGHTOWER SOLUTIONS INC.



COAX TO CLEARWIRE CAB



COAX ENTERING CLEARWIRE CAB



CLEARWIRE CAB



SOUTH UP FACE





## TOWER/MOUNT MAPPING REPORT

Site Name: A5C0198A

Site #: A5C0198A

© PROPERTY OF HIGHTOWER SOLUTIONS INC.



WEST UP FACE



COAX TO CLEARWIRE CAB



COAX TO CLEARWIRE CAB



COAX TO CLEARWIRE CAB



## TOWER/MOUNT MAPPING REPORT

Site Name: A5C0198A

Site #: A5C0198A

© PROPERTY OF HIGHTOWER SOLUTIONS INC.



COAX ENTERING CLEARWIRE CAB



CLEARWIRE CAB SIGN



CLEARWIRE CAB



COAX TO SPRINT CAB





## TOWER/MOUNT MAPPING REPORT

Site Name: A5C0198A

Site #: A5C0198A

© PROPERTY OF HIGHTOWER SOLUTIONS INC.



COAX TO SPRINT CAB



COAX ENTERING SPRINT CAB



SPRINT CAB SIGN



SPRINT CAB



## TOWER/MOUNT MAPPING REPORT

Site Name: A5C0198A

Site #: A5C0198A

© PROPERTY OF HIGHTOWER SOLUTIONS INC.



FULL VIEW



BOTTOM HALF



TOP HALF



SECTION #1



## TOWER/MOUNT MAPPING REPORT

Site Name: A5C0198A

Site #: A5C0198A

© PROPERTY OF HIGHTOWER SOLUTIONS INC.



SECTION #2



SECTION #3



ALPHA SECTOR



BETA SECTOR





## TOWER/MOUNT MAPPING REPORT

Site Name: A5C0198A

Site #: A5C0198A

© PROPERTY OF HIGHTOWER SOLUTIONS INC.



SOUTH FACE



GAMMA SECTOR



WEST FACE



CALIBRATED ULTRA SOUND



## TOWER/MOUNT MAPPING REPORT

Site Name: A5C0198A

Site #: A5C0198A

© PROPERTY OF HIGHTOWER SOLUTIONS INC.



ANTENNA #1



ANTENNA #1 HEIGHT



ANTENNA #1 TAG



ANTENNA #2





## TOWER/MOUNT MAPPING REPORT

Site Name: A5C0198A

Site #: A5C0198A

© PROPERTY OF HIGHTOWER SOLUTIONS INC.



ANTENNA #2 TAG



ANTENNA #3



ANTENNA #3 TAG



ANTENNA #4





## TOWER/MOUNT MAPPING REPORT

Site Name: A5C0198A

Site #: A5C0198A

© PROPERTY OF HIGHTOWER SOLUTIONS INC.



ANTENNA #4 TAG



ANTENNA #4 HEIGHT



ANTENNA #5



ANTENNA #5 TAG



## TOWER/MOUNT MAPPING REPORT

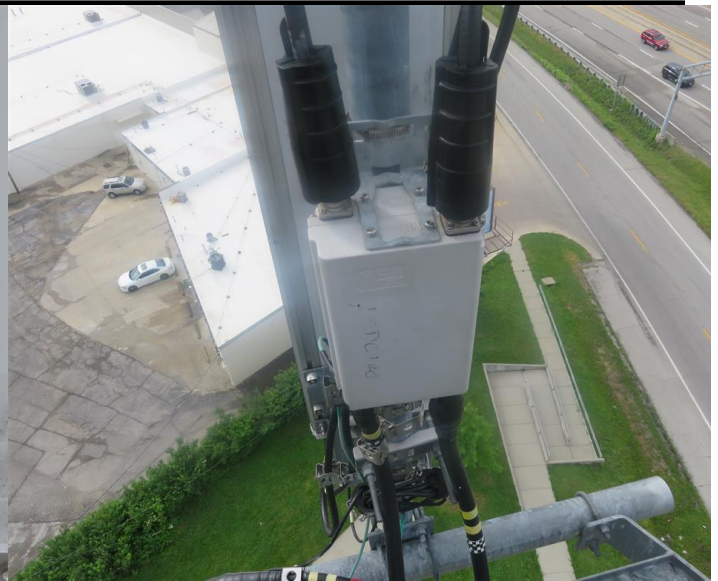
Site Name: A5C0198A

Site #: A5C0198A

© PROPERTY OF HIGHTOWER SOLUTIONS INC.



ANTENNA #5 HEIGHT



ANTENNA #5 TMA



ANTENNA #5 TMA TAG



ANTENNA #6





## TOWER/MOUNT MAPPING REPORT

Site Name: A5C0198A

Site #: A5C0198A

© PROPERTY OF HIGHTOWER SOLUTIONS INC.



ANTENNA #6 HEIGHT



ANTENNA #6 TAG



ANTENNA #7



ANTENNA #7 TAG



## TOWER/MOUNT MAPPING REPORT

Site Name: A5C0198A

Site #: A5C0198A

© PROPERTY OF HIGHTOWER SOLUTIONS INC.



ANTENNA #7 HEIGHT



ANTENNA #7 TMA



ANTENNA #8



ANTENNA #8 TAG



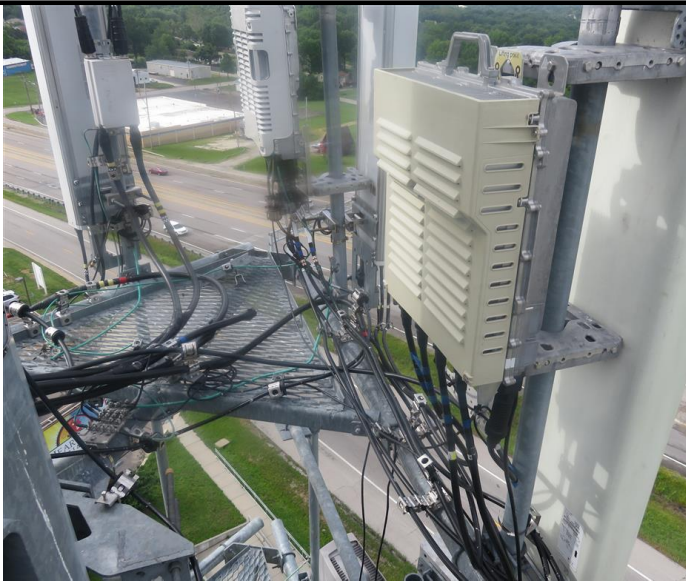


## TOWER/MOUNT MAPPING REPORT

Site Name: A5C0198A

Site #: A5C0198A

© PROPERTY OF HIGHTOWER SOLUTIONS INC.



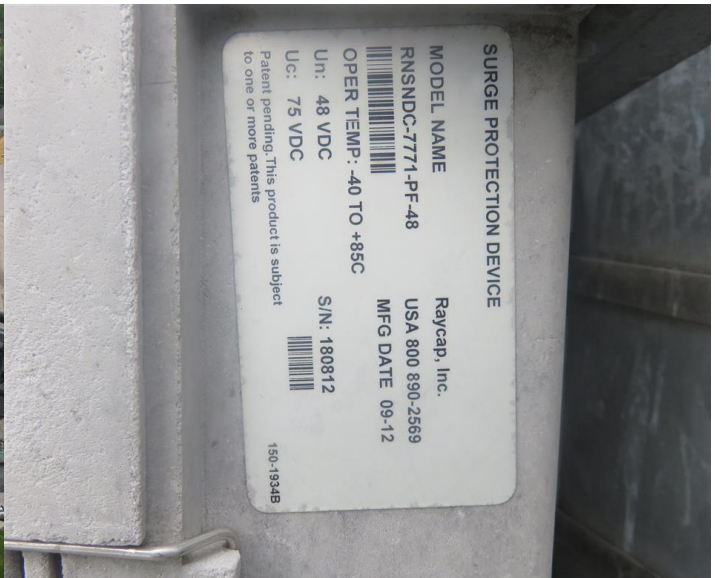
ANTENNA #9



ANTENNA #9 TAG



ANTENNA #10



ANTENNA #10 TAG



## TOWER/MOUNT MAPPING REPORT

Site Name: A5C0198A

Site #: A5C0198A

© PROPERTY OF HIGHTOWER SOLUTIONS INC.



ALPHA SECTOR LEFT

ALPHA SECTOR RIGHT



BETA SECTOR LEFT

BETA SECTOR RIGHT





## TOWER/MOUNT MAPPING REPORT

Site Name: A5C0198A

Site #: A5C0198A

© PROPERTY OF HIGHTOWER SOLUTIONS INC.



GAMMA SECTOR LEFT

GAMMA SECTOR RIGHT



COLLAR

COLLAR





## TOWER/MOUNT MAPPING REPORT

Site Name: A5C0198A

Site #: A5C0198A

© PROPERTY OF HIGHTOWER SOLUTIONS INC.



BOOM



BOOM



STIFF ARM



STIFF ARM





## TOWER/MOUNT MAPPING REPORT

Site Name: A5C0198A

Site #: A5C0198A

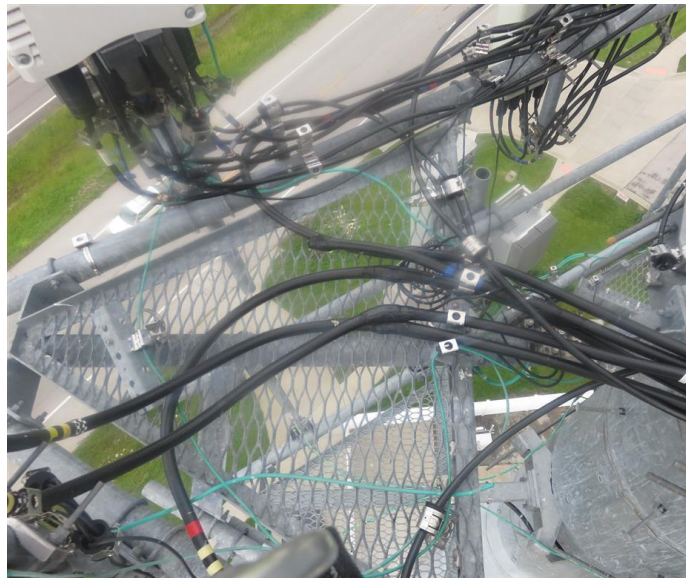
© PROPERTY OF HIGHTOWER SOLUTIONS INC.



BOOM



BOOM



BOOM



ANTENNA #11



## TOWER/MOUNT MAPPING REPORT

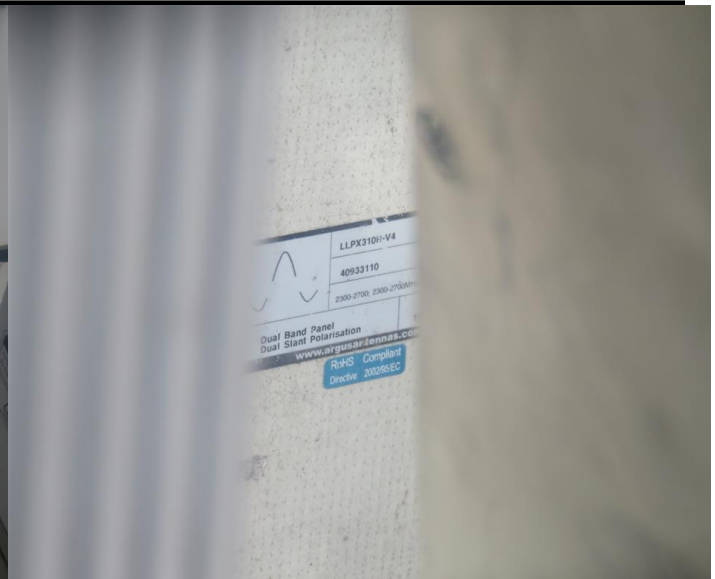
Site Name: A5C0198A

Site #: A5C0198A

© PROPERTY OF HIGHTOWER SOLUTIONS INC.



ANTENNA #11 TAG



ANTENNA #12 TAG



ANTENNA #12



ANTENNA #12 HEIGHT





## TOWER/MOUNT MAPPING REPORT

Site Name: A5C0198A

Site #: A5C0198A

© PROPERTY OF HIGHTOWER SOLUTIONS INC.



ANTENNA #13



ANTENNA #14



ANTENNA #15



ANTENNA #15 TAG



## TOWER/MOUNT MAPPING REPORT

Site Name: A5C0198A

Site #: A5C0198A

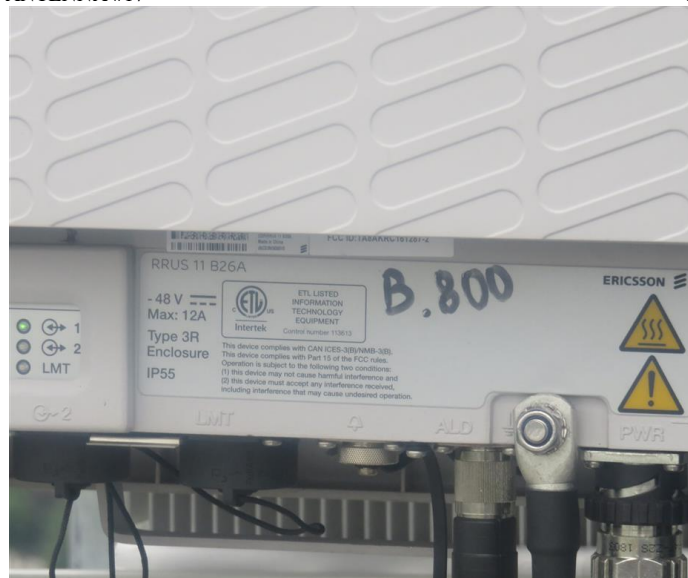
© PROPERTY OF HIGHTOWER SOLUTIONS INC.



ANTENNA #17



ANTENNA #17 TAG



ANTENNA #18 TAG



ANTENNA #18





## TOWER/MOUNT MAPPING REPORT

Site Name: A5C0198A

Site #: A5C0198A

© PROPERTY OF HIGHTOWER SOLUTIONS INC.



ANTENNA #19



ANTENNA #19 TAG



ANTENNA #19 HEIGHT



VIEW NORTH



## TOWER/MOUNT MAPPING REPORT

Site Name: A5C0198A

Site #: A5C0198A

© PROPERTY OF HIGHTOWER SOLUTIONS INC.



VIEW EAST



VIEW SOUTH



VIEW WEST



ANTENNA #20





## TOWER/MOUNT MAPPING REPORT

Site Name: A5C0198A

Site #: A5C0198A

© PROPERTY OF HIGHTOWER SOLUTIONS INC.



ANTENNA #23 TAG



ANTENNA #21 TAG



ANTENNA #21



ANTENNA #23

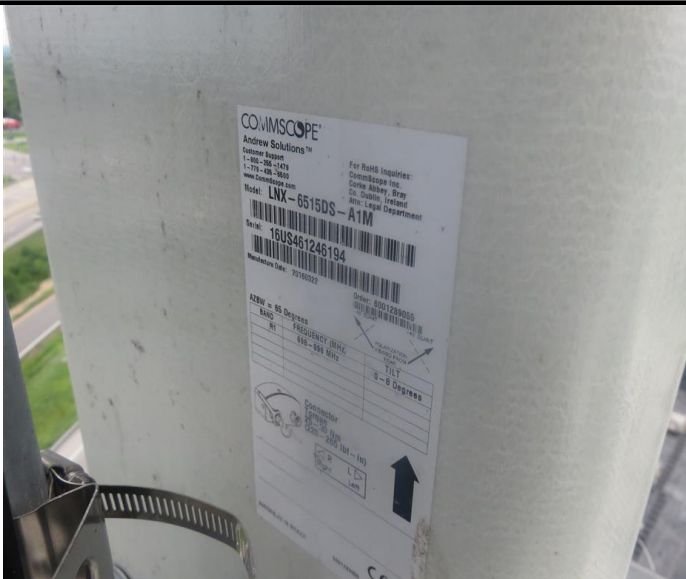


## TOWER/MOUNT MAPPING REPORT

Site Name: A5C0198A

Site #: A5C0198A

© PROPERTY OF HIGHTOWER SOLUTIONS INC.



ANTENNA #22,#23



ANTENNA #22,#23 HEIGHT



ANTENNA #22 TMA



ANTENNA #24,#25





## TOWER/MOUNT MAPPING REPORT

Site Name: A5C0198A

Site #: A5C0198A

© PROPERTY OF HIGHTOWER SOLUTIONS INC.



ANTENNA #24 TAG



ANTENNA #24,#25 HEIGHT



ANTENNA #24 TMA



ANTENNA #26

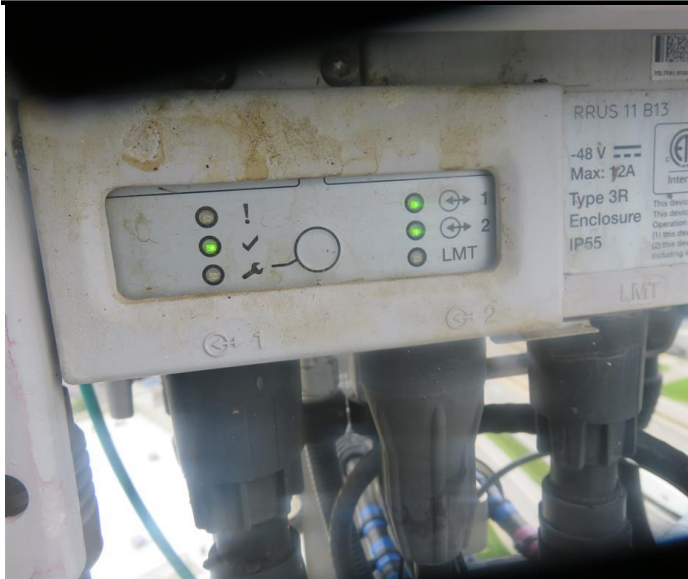


## TOWER/MOUNT MAPPING REPORT

Site Name: A5C0198A

Site #: A5C0198A

© PROPERTY OF HIGHTOWER SOLUTIONS INC.



ANTENNA #26 TAG



ANTENNA #28



ANTENNA #28 TAG



TOP OF TOWER HEIGHT





## TOWER/MOUNT MAPPING REPORT

Site Name: A5C0198A

Site #: A5C0198A

© PROPERTY OF HIGHTOWER SOLUTIONS INC.



ANTENNA #27



ANTENNA #27 TAG



PORTHOLE #9



PORTHOLE #8



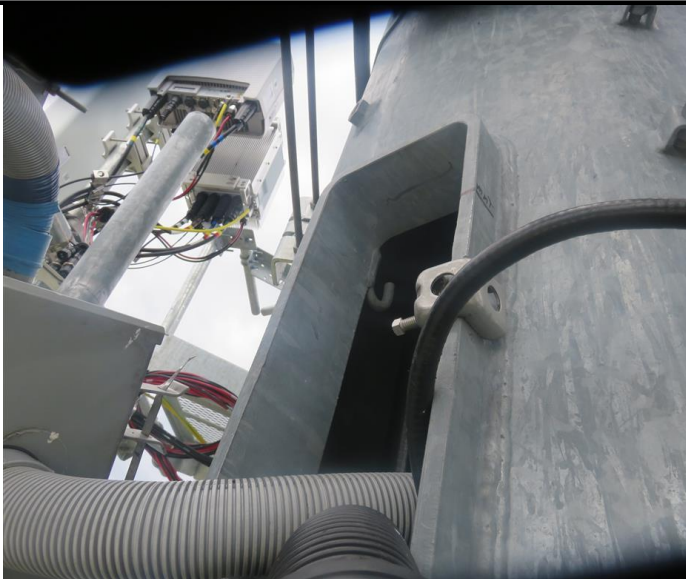


## TOWER/MOUNT MAPPING REPORT

Site Name: A5C0198A

Site #: A5C0198A

© PROPERTY OF HIGHTOWER SOLUTIONS INC.



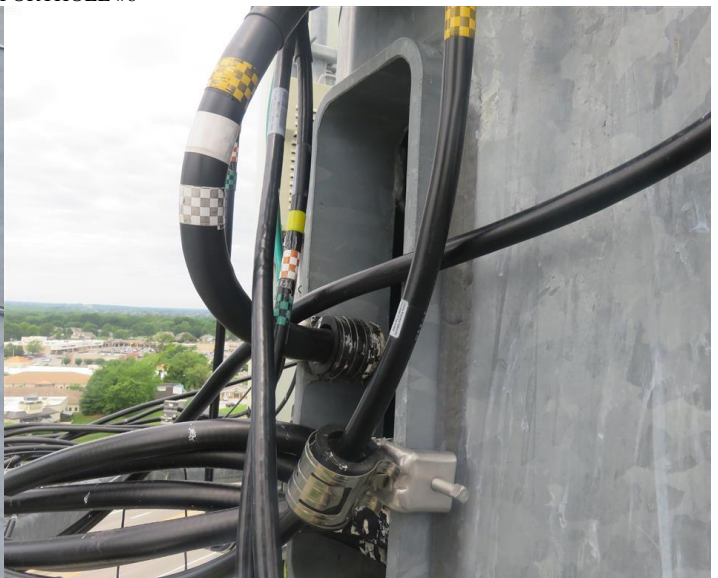
PORTHOLE #7



PORTHOLE #6



PORTHOLE #5



PORTHOLE #4



## TOWER/MOUNT MAPPING REPORT

Site Name: A5C0198A

Site #: A5C0198A

© PROPERTY OF HIGHTOWER SOLUTIONS INC.



PORTHOLE #3



COMPOUND



COMPOUND



BOTTOM OF MOUNT HEIGHT





## TOWER/MOUNT MAPPING REPORT

Site Name: A5C0198A

Site #: A5C0198A

© PROPERTY OF HIGHTOWER SOLUTIONS INC.



PORTHOLE #2



PORTHOLE #1



PORTHOLE #1



PORTHOLE #2





## TOWER/MOUNT MAPPING REPORT

Site Name: A5C0198A

Site #: A5C0198A

© PROPERTY OF HIGHTOWER SOLUTIONS INC.



PORTHOLE #3



PORTHOLE #4



PORTHOLE #5



PORTHOLE #6



## TOWER/MOUNT MAPPING REPORT

Site Name: A5C0198A

Site #: A5C0198A

© PROPERTY OF HIGHTOWER SOLUTIONS INC.



PORTHOLE #7



PORTHOLE #9



ANTENNA #1



ANTENNA #2





## TOWER/MOUNT MAPPING REPORT

Site Name: A5C0198A

Site #: A5C0198A

© PROPERTY OF HIGHTOWER SOLUTIONS INC.



ANTENNA #3



ANTENNA #4



ANTENNA #5



ANTENNA #6





## TOWER/MOUNT MAPPING REPORT

Site Name: A5C0198A

Site #: A5C0198A

© PROPERTY OF HIGHTOWER SOLUTIONS INC.



ANTENNA #7



ANTENNA #8



ANTENNA #9



ANTENNA #10



## TOWER/MOUNT MAPPING REPORT

Site Name: A5C0198A

Site #: A5C0198A

© PROPERTY OF HIGHTOWER SOLUTIONS INC.



ANTENNA #11



ANTENNA #12



ANTENNA #13



ANTENNA #14





## TOWER/MOUNT MAPPING REPORT

Site Name: A5C0198A

Site #: A5C0198A

© PROPERTY OF HIGHTOWER SOLUTIONS INC.



ANTENNA #15



ANTENNA #16



ANTENNA #17



ANTENNA #18





## TOWER/MOUNT MAPPING REPORT

Site Name: A5C0198A

Site #: A5C0198A

© PROPERTY OF HIGHTOWER SOLUTIONS INC.



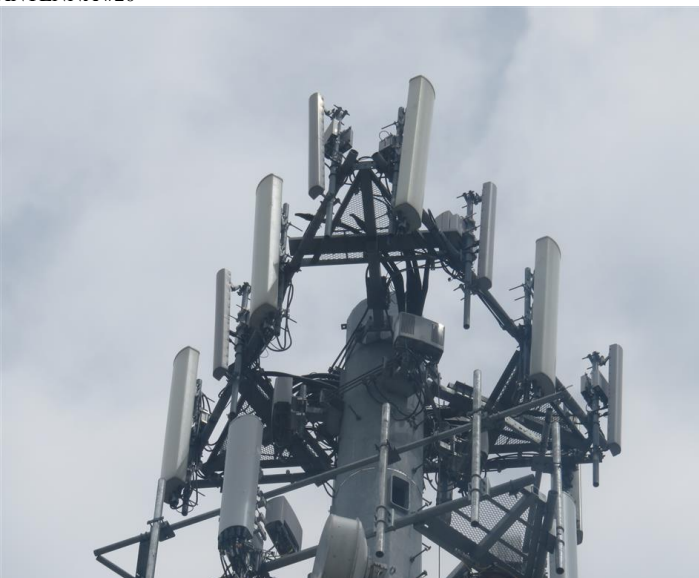
ANTENNA #19



ANTENNA #20



ANTENNA #21



ANTENNA #22



## TOWER/MOUNT MAPPING REPORT

Site Name: A5C0198A

Site #: A5C0198A

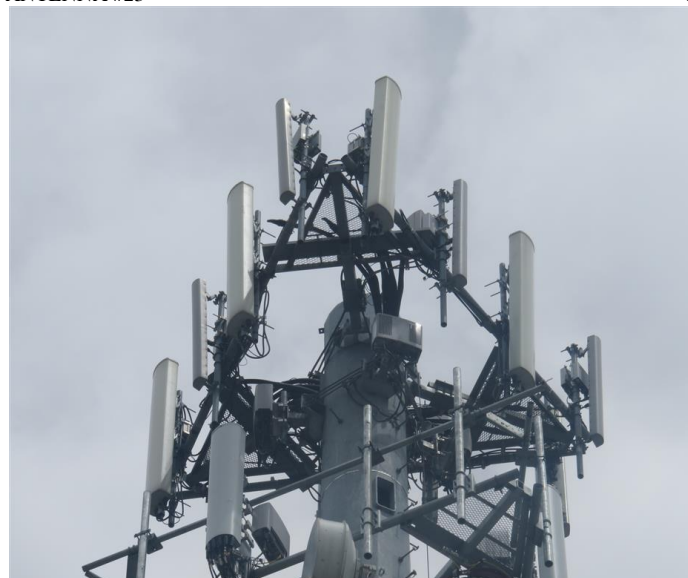
© PROPERTY OF HIGHTOWER SOLUTIONS INC.



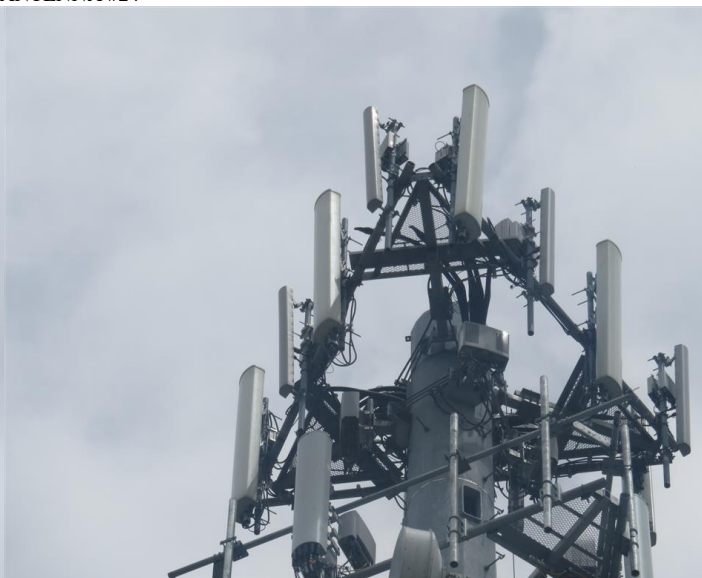
ANTENNA #23



ANTENNA #24



ANTENNA #25



ANTENNA #26



## TOWER/MOUNT MAPPING REPORT

Site Name: A5C0198A

Site #: A5C0198A

© PROPERTY OF HIGHTOWER SOLUTIONS INC.



ANTENNA #27



ANTENNA #28