

DESCRIPTION

The Impact Elite family of wall luminaires is the ideal complement to site design. Incorporating modular LightSquares technology, the Impact Elite luminaire provides outstanding uniformity and energy-conscious illumination. Combined with a rugged construction, the Impact Elite luminaire is the ideal facade and security luminaire for zones surrounding schools, office complexes, apartments and recreational facilities. UL/cUL listed for wet locations.

Catalog #		Type
Project		
Comments		Date
Prepared by		

SPECIFICATION FEATURES

Construction

Heavy-wall, die-cast aluminum housing and removable hinged door frame for precise tolerance control and repeatability. Hinged door inset for clean mating with housing surface and secured via two captive fasteners. Optional tamper-resistant Torx™ head fasteners offer vandal resistant access to the electrical chamber.

Optics

Choice of 10 patented, high-efficiency AccuLED Optics™ distributions. Optics are precisely designed to shape the light output, maximizing efficiency and application spacing. AccuLED Optics technology creates consistent distributions with the scalability to meet customized application requirements. Offered Standard in 4000K (+/- 275K) CCT and minimum 70 CRI. Optional 3000K, 5000K and 5700K CCT.

Electrical

LED drivers mount to die-cast aluminum back housing for optimal heat sinking, operation efficacy, and prolonged life. Standard drivers feature electronic universal voltage (120-277V 50/60Hz), 347V 60Hz or 480V 60Hz operation, greater than 0.9 power factor, less than 20% harmonic distortion, and are suitable for operation in -40°C to 40°C ambient environments. All fixtures are shipped standard with 10kV/10kA common – and differential – mode surge protection. LightSquares feature an IP66 enclosure rating and maintain greater than 90% lumen maintenance at 60,000 hours per IESNA TM-21. Emergency egress options for -20°C ambient environments and occupancy sensor available.

Mounting

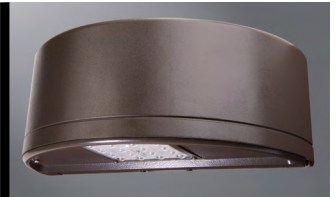
Gasketed and zinc plated rigid steel mounting attachment fits directly to 4" j-box or wall with the Impact Elite "Hook-N-Lock" mechanism for quick installation. Secured with two captive corrosion resistant black oxide coated allen head set screws concealed but accessible from bottom of fixture.

Finish

Cast components finished in a five-stage super TGIC polyester powder coat paint, 2.5 mil nominal thickness for superior protection against fade and wear. Standard colors include black, bronze, grey, white, dark platinum and graphite metallic. RAL and custom color matches available. Consult the McGraw-Edison Architectural Colors brochure for the complete selection.

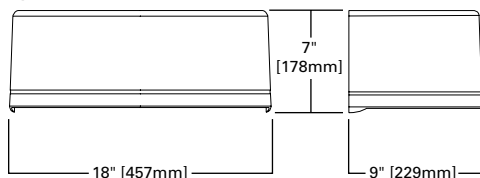
Warranty

Five-year warranty.

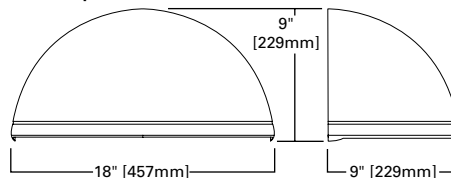


DIMENSIONS

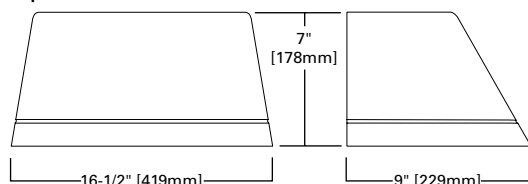
Cylinder



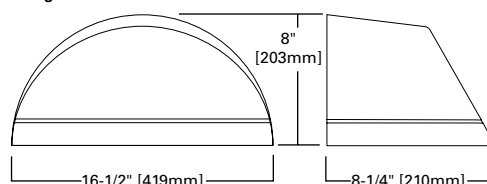
Quarter Sphere



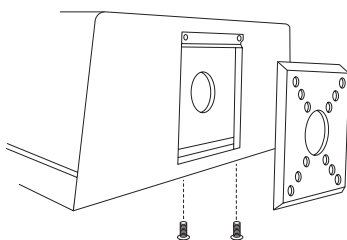
Trapezoid



Wedge



HOOK-N-LOCK MOUNTING



ISC/ISS/IST/ISW IMPACT ELITE LED

1 LightSquare
Solid State LED

WALL MOUNT LUMINAIRE

CERTIFICATION DATA

UL/cUL Listed
LM79 / LM80 Compliant
IP66 LightSquare
DesignLights Consortium® Qualified*
ISO 9001

ENERGY DATA

Electronic LED Driver
>0.9 Power Factor
<20% Total Harmonic Distortion
120-277V/50 & 60Hz, 347V/60Hz,
480V/60Hz
-40°C Minimum Temperature
40°C Ambient Temperature Rating

SHIPPING DATA

Approximate Net Weight:
18 lbs. (8 kgs.)



*www.designlights.org



POWER AND LUMENS

1 LightSquare (AF)		Cylinder (ISC) and Quarter Sphere (ISS)						Trapezoid (IST) and Wedge (ISW)					
Drive Current (mA)		350	450	600	800	1000	1200	350	450	600	800	1000	1200
Power (Watts)	120-277V	20.3	25.5	33.4	43.9	55.1	66.2	20.3	25.5	33.4	43.9	55.1	66.2
	Current (A)												
Current (A)	120V	0.17	0.22	0.29	0.38	0.48	0.56	0.17	0.22	0.29	0.38	0.48	0.56
	277V	0.09	0.10	0.13	0.17	0.21	0.25	0.09	0.10	0.13	0.17	0.21	0.25
Power (Watts)		23.3	28.7	36.6	49.5	60.7	70.1	23.3	28.7	36.6	49.5	60.7	70.1
Current (A)	347V	0.07	0.08	0.11	0.15	0.18	0.21	0.07	0.08	0.11	0.15	0.18	0.21
	480V	0.05	0.06	0.08	0.11	0.13	0.16	0.05	0.06	0.08	0.11	0.13	0.16
Optics													
T2	Lumens	2,390	3,001	3,915	4,901	5,793	6,592	2,555	3,208	4,185	5,239	6,193	7,047
	BUG Rating	B1-U0-G1	B1-U0-G1	B1-U0-G1	B1-U0-G1	B1-U0-G2	B1-U0-G2	B1-U1-G1	B1-U1-G1	B1-U1-G1	B1-U1-G1	B1-U1-G2	B1-U1-G2
T3	Lumens	2,440	3,063	3,996	5,001	5,912	6,728	2,561	3,216	4,195	5,251	6,207	7,063
	BUG Rating	B1-U0-G1	B1-U0-G1	B1-U0-G1	B1-U0-G1	B1-U0-G2	B1-U0-G2	B1-U1-G1	B1-U1-G1	B1-U1-G1	B1-U1-G1	B1-U1-G2	B1-U1-G2
T4FT	Lumens	2,414	3,031	3,955	4,950	5,851	6,658	2,589	3,250	4,240	5,308	6,274	7,139
	BUG Rating	B1-U0-G1	B1-U0-G1	B1-U0-G1	B1-U0-G2	B1-U0-G2	B1-U0-G2	B1-U1-G1	B1-U1-G1	B1-U1-G1	B1-U1-G2	B1-U1-G2	B1-U1-G2
T4W	Lumens	2,441	3,065	3,998	5,004	5,916	6,732	2,557	3,211	4,189	5,244	6,198	7,053
	BUG Rating	B1-U0-G1	B1-U0-G1	B1-U0-G1	B1-U0-G2	B1-U0-G2	B1-U0-G2	B1-U1-G1	B1-U1-G1	B1-U1-G1	B1-U1-G2	B1-U1-G2	B1-U1-G2
SL2	Lumens	2,309	2,899	3,782	4,734	5,596	6,368	2,469	3,100	4,044	5,062	5,983	6,809
	BUG Rating	B1-U0-G1	B1-U0-G1	B1-U0-G1	B1-U0-G2	B1-U0-G2	B1-U0-G2	B1-U1-G1	B1-U1-G1	B1-U1-G1	B1-U1-G1	B1-U1-G2	B1-U1-G2
SL3	Lumens	2,271	2,851	3,719	4,656	5,503	6,262	2,419	3,038	3,963	4,961	5,864	6,673
	BUG Rating	B0-U0-G1	B1-U0-G1	B1-U0-G1	B1-U0-G2	B1-U0-G2	B1-U0-G2	B0-U1-G1	B1-U1-G1	B1-U1-G1	B1-U1-G1	B1-U1-G2	B1-U1-G2
SL4	Lumens	2,158	2,710	3,535	4,425	5,230	5,951	2,286	2,870	3,744	4,686	5,539	6,303
	BUG Rating	B0-U0-G1	B0-U0-G1	B1-U0-G1	B1-U0-G2	B1-U0-G2	B1-U0-G2	B0-U1-G1	B0-U1-G1	B1-U1-G1	B1-U1-G2	B1-U1-G2	B1-U1-G2
SLL/SLR	Lumens	2,036	2,555	3,334	4,174	4,934	5,614	2,204	2,767	3,610	4,519	5,341	6,078
	BUG Rating	B0-U0-G1	B1-U0-G1	B1-U0-G1	B1-U0-G2	B1-U0-G2	B1-U0-G2	B1-U1-G1	B1-U1-G1	B1-U1-G2	B1-U1-G2	B1-U1-G2	B1-U1-G2
RW	Lumens	2,435	3,057	3,987	4,992	5,900	6,715	2,521	3,166	4,130	5,170	6,111	6,954
	BUG Rating	B1-U0-G0	B2-U0-G0	B2-U0-G1	B2-U0-G1	B2-U0-G1	B3-U0-G1	B1-U1-G1	B2-U1-G1	B2-U1-G1	B2-U1-G1	B2-U1-G1	B3-U1-G1

LUMEN MAINTENANCE

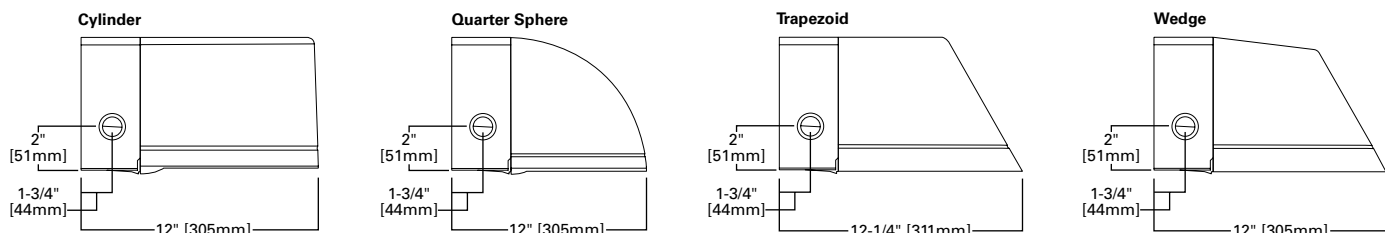
Current	Ambient Temperature	25000 Hours*	50000 Hours*	60000 Hours*	100000 Hours*	Theoretical L70 (Hours)*
Up to 1.2A	Up to 40°C	>95%	>91%	>90%	>83%	20,400

*Data calculated based on TM-21 calculator.

LUMEN MULTIPLIER

Ambient Temperature	Lumen Multiplier
10°C	1.02
15°C	1.01
25°C	1.00
40°C	0.99

THRUWAY BACK BOX



CONTROL OPTIONS

0-10V

This fixture is offered standard with 0-10V dimming driver.

Photocontrol (PC1, PC2 and PER7)

Optional button-type photocontrol provides a flexible solution to enable “dusk-to-dawn” lighting by sensing light levels.

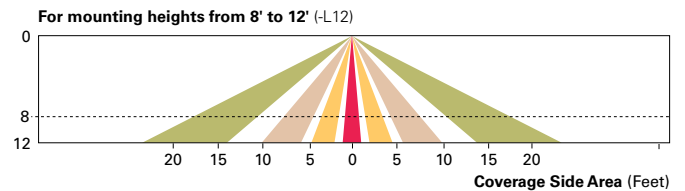
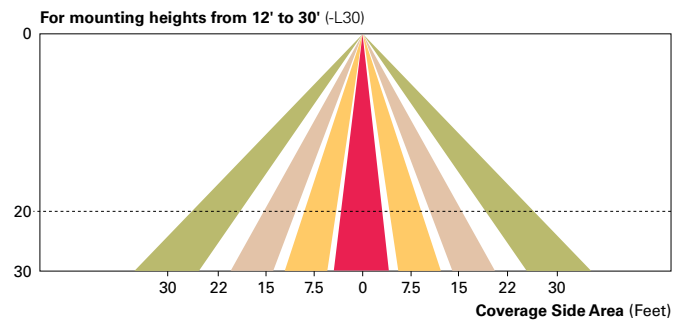
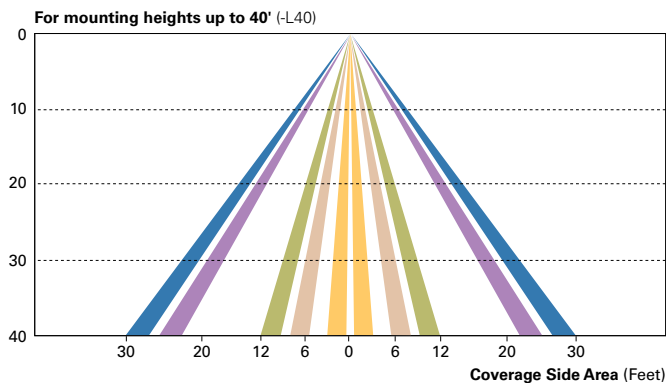
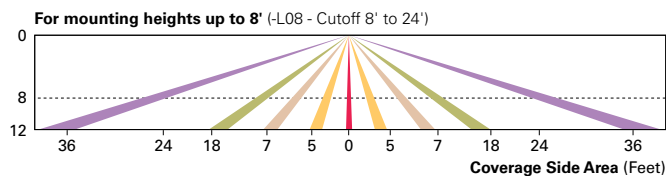
After Hours Dim (AHD)

This feature allows photocontrol-enabled luminaires to achieve additional energy savings by dimming during scheduled portions of the night. The dimming profile will automatically take effect after a “dusk-to-dawn” period has been calculated from the photocontrol input. Specify the desired dimming profile for a simple, factory-shipped dimming solution requiring no external control wiring. Reference the After Hours Dim supplemental guide for additional information.

Dimming Occupancy Sensor (MS/DIM-LXX)

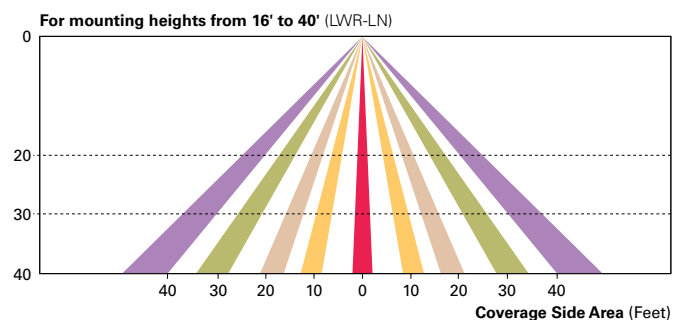
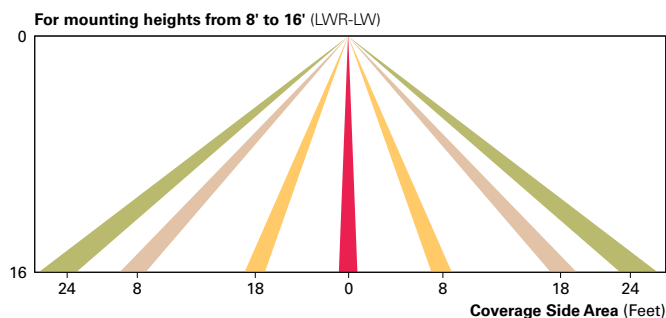
These sensors are factory installed in the luminaire housing. When the MS/DIM-LXX sensor option is selected, the occupancy sensor is connected to a dimming driver and the entire luminaire dims when there is no activity detected. When activity is detected, the luminaire returns to full light output. The MS/DIM sensor is factory preset to dim down to approximately 50 percent power with a time delay of five minutes.

These occupancy sensors includes an integral photocell that can be activated with the FSIR-100 accessory for “dusk-to-dawn” control or daylight harvesting -- the factory preset is OFF. The FSIR-100 is a wireless tool utilized for changing the dimming level, time delay, sensitivity and other parameters. A variety of sensor lens are available to optimize the coverage pattern for mounting heights from 8'-40'.



Enlighted Wireless Control and Monitoring System (LWR-LW and LWR-LN)

Enlighted is a connected lighting solution that combines a broad selection of energy-efficient LED luminaires with a powerful integrated wireless sensor system. The sensor controls the lighting system in compliance with the latest energy codes and collects valuable data about building performance and use. Software applications turn the granular data into information through energy dashboards and specialized apps that make it simple and help optimize the use of building resources, beyond lighting.



WaveLinx Wireless Outdoor Lighting Control Module (WOLC-7P-10A)

The 7-pin wireless outdoor lighting control module enables WaveLinx to control outdoor area, site and flood lighting. WaveLinx controls outdoor lighting using schedules to provide ON, OFF and dimming controls based on astronomic or time schedules based on a 7 day week.

ORDERING INFORMATION

Sample Number: ISC-AF-1200-LED-E1-T3-BZ

Product Family ¹	Light Engine	Drive Current	Lamp Type	Voltage	Distribution	Color
ISC =Impact Elite LED Small Cylinder ISS =Impact Elite LED Small Quarter Sphere IST =Impact Elite LED Small Trapezoid ISW =Impact Elite LED Small Wedge	AF =(1) LightSquare	350 =Drive Current Factory Set to 350mA 450 =Drive Current Factory Set to 450mA 600 =Drive Current Factory Set to 600mA 800 =Drive Current Factory Set to 800mA 1000 =Drive Current Factory Set to 1000mA 1200 =Drive Current Factory Set to 1200mA ²	LED =Solid State Light Emitting Diodes	E1 =Electronic (120-277V) 347 =347V ² 480 =480V ^{2,3}	T2 =Type II T3 =Type III T4FT =Type IV Forward Throw T4W =Type IV Wide SL2 =Type II w/Spill Control SL3 =Type III w/Spill Control SL4 =Type IV w/Spill Control SLL =90° Spill Light Eliminator Left SLR =90° Spill Light Eliminator Right RW =Rectangular Wide Type I	AP =Grey BZ =Bronze BK =Black DP =Dark Platinum GM =Graphitic Metallic WH =White
Options (Add as Suffix)			Accessories (Order Separately) ¹⁶			
7027 =70 CRI / 2700K CCT ⁴ 7030 =70 CRI / 3000K CCT ⁴ 7050 =70 CRI / 5000K CCT ⁴ 7060 =70 CRI / 5700K CCT ⁴ 8030 =80 CRI / 3000K CCT ⁴ PER7 =NEMA 7-PIN Twistlock Photocontrol Receptacle ^{2,5,6} P =Button Type Photocontrol (Available in 120, 208, 240 or 277V. Must Specify Voltage) ^{2,6} HA =50°C High Ambient ⁷ AHD145 =After Hours Dim, 5 Hours, 50% ⁸ AHD245 =After Hours Dim, 6 Hours, 50% ⁸ AHD255 =After Hours Dim, 7 Hours, 50% ⁸ AHD355 =After Hours Dim, 8 Hours, 50% ⁸ MS/DIM-LXX =Motion Sensor for Dimming Operation ^{9,10,11} LWR-LW =Enlighted Wireless Sensor, Wide Lens for 8' - 16' Mounting Height ^{6,11,12} LWR-LN =Enlighted Wireless Sensor, Narrow Lens for 16' - 40' Mounting Height ^{6,11,12} CBP =Battery Pack with Back Box, Cold Weather Rated ¹³ CBP-CEC =Battery Pack with Back Box, Cold Weather Rated, CEC compliant ¹³ LCF =LightSquare Trim Plate Matches Housing Finish HSS =Factory Installed House Side Shield ¹⁴ ULG =Uplight Glow ^{5,6} TR =Tamper Resistant Hardware X =Driver Surge Protection (6kV) Only ¹⁵ ZW =WaveLinx-enabled 4-PIN Twistlock Receptacle ^{18,19} ZW-SWPD4XX =Wavelinx Wireless Sensor, 7' - 15' Mounting Height ^{16,18,19} ZW-SWPD5XX =Wavelinx Wireless Sensor, 15' - 40' Mounting Height ^{16,18,19}			MA1253 =10kV Circuit Module Replacement MA1254-XX =Thruway Back Box - Impact Elite Trapezoid MA1255-XX =Thruway Back Box - Impact Elite Cylinder MA1256-XX =Thruway Back Box - Impact Elite Quarter Sphere MA1257-XX =Thruway Back Box - Impact Elite Wedge FSIR-100 =Wireless Configuration Tool for Occupancy Sensor WOLC-7P-10A =WaveLinx Outdoor Control Module (7-pin) ^{17,18} SWPD4-XX =Wavelinx Wireless Sensor, 7' - 15' Mounting Height ^{16,18,19,20} SWPD5-XX =Wavelinx Wireless Sensor, 15' - 40' Mounting Height ^{16,18,19,20}			

NOTES:

- Standard 4000K CCT and greater than 70 CRI.
- Not available with ULG option.
- Only for use with 480V Wye systems. Per NEC, not for use with ungrounded systems, impedance grounded systems or corner grounded systems (commonly known as Three Phase Three Wire Delta, Three Phase High Leg Delta and Three Phase Corner Grounded Delta systems).
- Extended lead times apply.
- Not available with ISS or ISW.
- Not available with LWR-XX or MS/DIM-LXX.
- Suitable for 50°C provided no options other than motion sensor are included and driver output set to 1.A or less.
- Requires the use of P photocontrol or the PER7 photocontrol receptacle with photocontrol accessory. Not available with 350mA drive current. See After Hours Dim supplemental guide for additional information.
- Specify lens in place of XX. Round to next highest option based on mounting height. Available options are 08, 20 and 40W.
- The FSIR-100 configuration tool is required to adjust parameters including high and low modes, sensitivity, time delay, cutoff and more. Consult your lighting representative at Cooper Lighting Solutions for more information.
- Includes integral photocell.
- Enlighted wireless sensors are factory installed and requiring network components in appropriate quantities. See www.cooperlighting.com for Enlighted application information.
- Battery pack with back box rated for operating temperature of -20°C to +40°C. Operates downlight for 90-minutes.
- Only for use with SL2, SL3 and SL4 distributions. The LightSquare trim plate is painted black when the HSS option is selected.
- Removes additional surge module.
- Replace XX with sensor color (WH, BZ, or BK).
- Requires PER7.
- Cannot be used in conjunction with photocontrol or other controls systems (P, R, MS, LWR).
- WAC Gateway required to enable field-configurability: Order WAC-PoE and WPOE-120 (10V to PoE injector) power supply if needed.
- Requires ZW.