



Existing Location Overview



2020 HealthHUB Rebrand

HealthHUB.

minute clinic

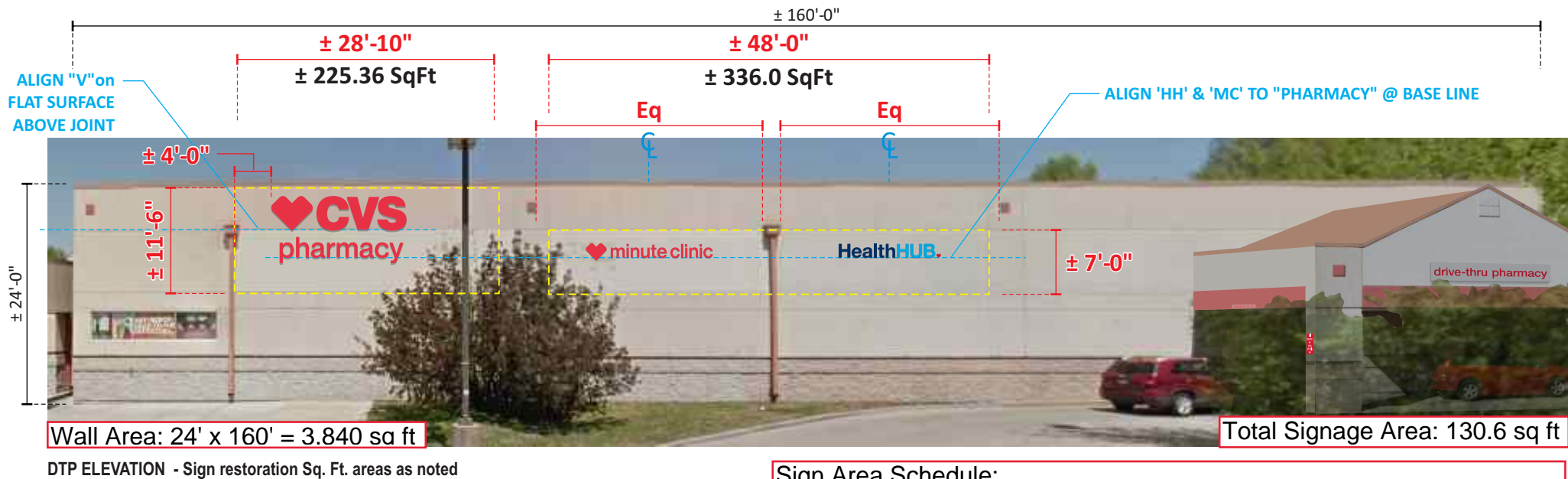
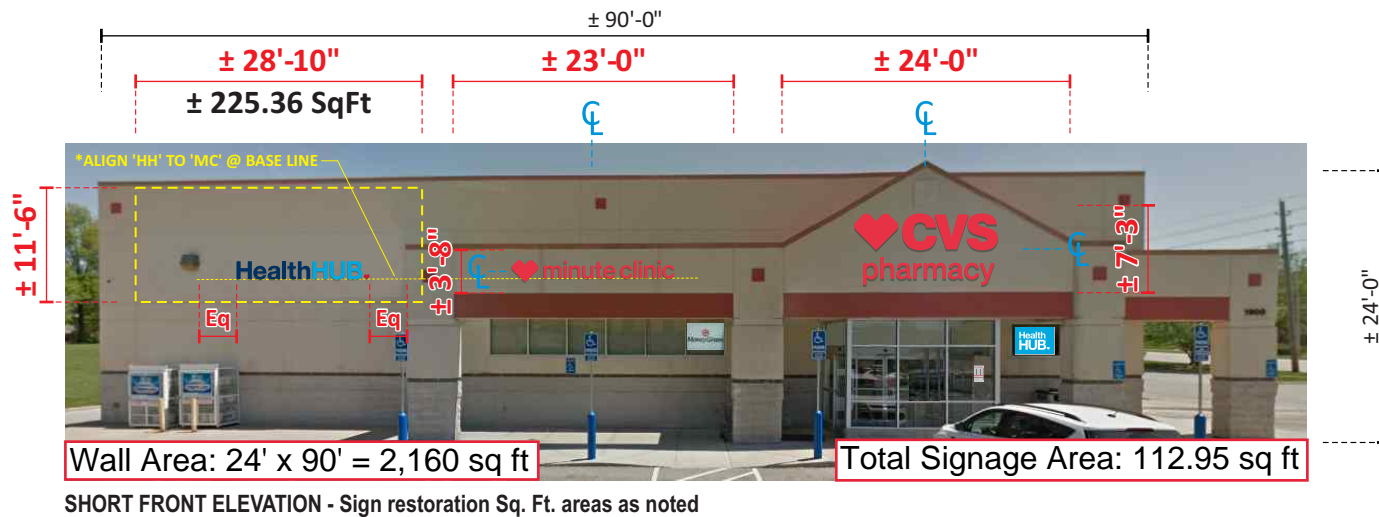


Proposed Signage Overview

**Loc#: 08557**

1900 N.E. LANGSFORD ROAD  
LEES SUMMIT, MISSOURI





SCALE: 1/16" = 1'-0"



Drawing prepared by:

#### ELEVATIONS

Location:  
1900 N.E. LANGSFORD ROAD  
LEES SUMMIT, MISSOURI

File Path:

Loc #:  
08557

Drawing prepared for:



#### Sign Area Schedule:

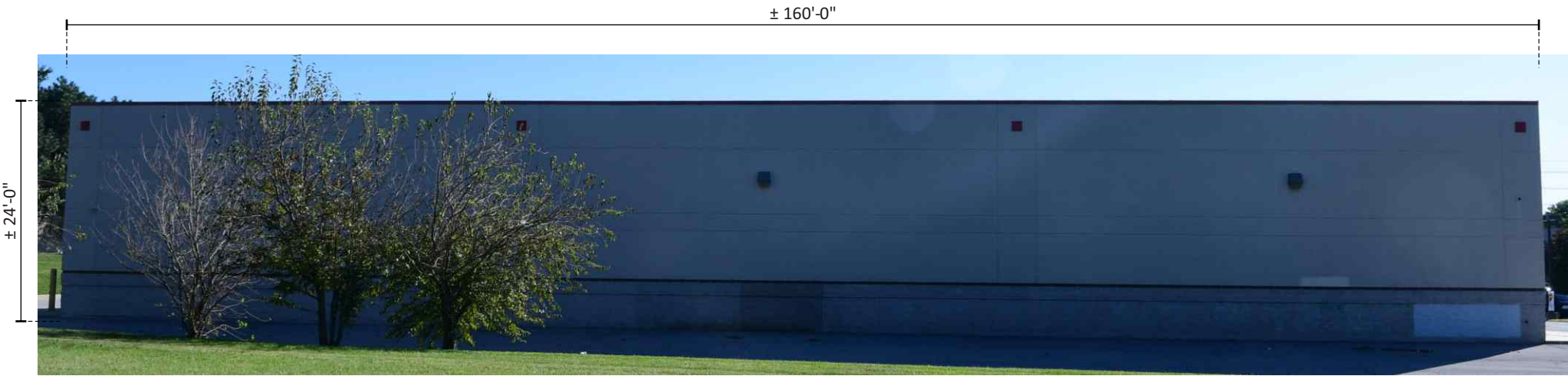
CVS pharmacy: 70.18 sq ft  
Minute Clinic: 26.10 sq ft

HealthHUB: 16.67 sq ft  
Drive-thru pharmacy: 17.65 sq ft

Rev #:	Req#:	Date:	Req. By:	Drawn By:	Revision Description:	This drawing is the property of Chandler Signs, LLC. All rights to it's use for reproduction are reserved by Chandler Signs, LLC.				
Original	0406714	06/24/20	WF	XX						
Rev 1		07/14/20		BR	Update to HH branding signage.	Rev #:	Req#:	Date:	Req. By:	Drawn By:
Rev 2		08/03/20		BR	Various revisions.	Rev 7				
Rev 3		08/28/20		BR	Update with new HH specs.	Rev 8				
Rev 4		10/06/20		BR	Update art	Rev 9				
Rev 5						Rev 10				
Rev 6										



REAR ELEVATION - Sign restoration Sq. Ft. areas as noted



LONG FRONT ELEVATION - Sign restoration Sq. Ft. areas as noted

SCALE: 1/16" = 1'-0"

Drawing prepared by:



**ELEVATIONS**

Location:  
1900 N.E. LANGSFORD ROAD  
LEES SUMMIT, MISSOURI  
File Path:

Loc #:  
08557

Drawing prepared for:



Rev #:	Req#:	Date:	Req. By:	Drawn By:	Revision Description:	This drawing is the property of Chandler Signs, LLC. All rights to it's use for reproduction are reserved by Chandler Signs, LLC.				
Original	0406714	06/24/20	WF	XX						
Rev 1		07/14/20		BR	Update to HH branding signage.	Rev #:	Req#:	Date:	Req. By:	Drawn By:
Rev 2		08/03/20		BR	Various revisions.	Rev 7				
Rev 3		08/28/20		BR	Update with new HH specs.	Rev 8				
Rev 4		10/06/20		BR	Update art	Rev 9				
Rev 5						Rev 10				
Rev 6										



**SIGN NUMBERS**



Drawing prepared by:



**SITE PLAN**

Location:  
1900 N.E. LANGSFORD ROAD  
LEES SUMMIT, MISSOURI

File Path:

Loc #:  
08557

Drawing prepared for:



Rev #:	Req#:	Date:	Req. By:	Drawn By:	Revision Description:	This drawing is the property of Chandler Signs, LLC. All rights to it's use for reproduction are reserved by Chandler Signs, LLC.				
Original	0406714	06/24/20	WF	XX						
Rev 1		07/14/20		BR	Update to HH branding signage.	Rev #:	Req#:	Date:	Req. By:	Drawn By:
Rev 2		08/03/20		BR	Various revisions.	Rev 7				
Rev 3		08/28/20		BR	Update with new HH specs.	Rev 8				
Rev 4		10/06/20		BR	Update art	Rev 9				
Rev 5						Rev 10				
Rev 6										



**\*TREE BRANCH TRIMMING RECOMMENDED  
FOR IMPROVED SIGN VISIBILITY\***



Drawing prepared by:



## OVERVIEW PHOTOS

Location:  
1900 N.E. LANGSFORD ROAD  
LEES SUMMIT, MISSOURI

File Path:

Loc #:  
08557

Drawing prepared for:



Rev #:	Req#:	Date:	Req. By:	Drawn By:	Revision Description:	This drawing is the property of Chandler Signs, LLC. All rights to it's use for reproduction are reserved by Chandler Signs, LLC.				
Original	0406714	06/24/20	WF	XX						
Rev 1		07/14/20		BR	Update to HH branding signage.	Rev #:	Req#:	Date:	Req. By:	Drawn By:
Rev 2		08/03/20		BR	Various revisions.	Rev 7				
Rev 3		08/28/20		BR	Update with new HH specs.	Rev 8				
Rev 4		10/06/20		BR	Update art	Rev 9				
Rev 5						Rev 10				
Rev 6										



Existing Signage - Elevation

### Existing Sign #1

Pylon Sign w/ MRB  
(Illum. w/ Fluorescent Lamps) - 60.00 sq ft

S/F ☐ D/F ☒  
Yes ☒ No ☐

### Proposed Signage

- REMOVE EXISTING FORMED CABINET FACES; REPLACE w/ NEW FLAT LEXAN FACES w/ 'HH' & 'MC' ZIP TRACK INSERTS
- LED RETROFIT CABINET
- \*REPLACE MISSING RETAINER AS REQUIRED

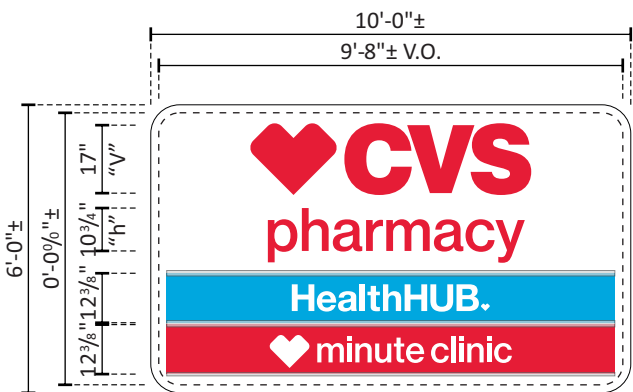
19'-6" ± O.A.H.



Proposed Signage - Elevation



Opposite View



60 SqFt

### REPLACEMENT FACES

SCALE: 1/4" = 1' - 0"

TWO [2] SETS REQUIRED - MFR. & INSTALL

### MAIN ID CABINET REFACE

- 3/16" HI IMPACT WHITE LEXAN FACES w/ ACRYLIC HANG BARS TOP & BACK SIDE OF FACE;  
TRANSLUCENT VINYL GRAPHICS APPLIED ACCORDINGLY

- \*FACES TO HAVE 3M 3635-22b "BLOCKOUT" VINYL FILM APPLIED SECOND SURFACE TO ALLOW FOR ILLUMINATION; LOGO & TAGLINE/INSERT AREA ARE CUT OUT
- \*LOGO CUT-OUT HAS 1/8" ± OFFSET AROUND EACH ELEMENT TO CREATE WHITE OUTLINE "HALO" TO ENHANCE VISIBILITY
- \*REMAINDER OF FACE DOES NOT ILLUMINATE

- TAGLINE TO BE 1/16" THICK CLEAR POLYCARBONATE 12 3/8"H INSERT PANELS w/ TRANSLUCENT VINYL APPLIED 1st SURFACE TO INSERT PANEL; COPY WEEDED OUT TO SHOW-THRU WHITE  
\*PANEL TO BE MOUNTED BETWEEN PRONTO CLEAR COPY TRACK;  
(QTY:1 @ 1 3/8"H TOP TRACK)  
(QTY:1 @ 1 5/8"H MUTUAL TRACK)  
(QTY:1 @ 7/8"H BOTTOM TRACK)

**NOTE: MANUFACTURING SURVEY REQUIRED PRIOR TO FABRICATION**



NIGHT ILLUMINATION

### VINYL

TO MATCH PMS 2995  
CARDINAL RED; 3M 3630-53

Drawing prepared by:

### RECOMMENDATION

Location:  
1900 N.E. LANGSFORD ROAD  
LEES SUMMIT, MISSOURI

File Path:

Loc #:  
08557

Drawing prepared for:



Rev #:	Req#:	Date:	Req. By:	Drawn By:	Revision Description:	Rev #:	Req#:	Date:	Req. By:	Drawn By:
Original	0406714	06/24/20	WF	XX	This drawing is the property of Chandler Signs, LLC. All rights to it's use for reproduction are reserved by Chandler Signs, LLC.	Rev 1		07/14/20	BR	Update to HH branding signage.
Rev 1		07/14/20		BR	Various revisions.	Rev 2		08/03/20	BR	Update with new HH specs.
Rev 2		08/03/20		BR	Update art	Rev 3		08/28/20	BR	
Rev 3		08/28/20		BR		Rev 4		10/06/20	BR	
Rev 4		10/06/20		BR		Rev 5				
Rev 5						Rev 6				
Rev 6						Rev 7				
						Rev 8				
						Rev 9				
						Rev 10				





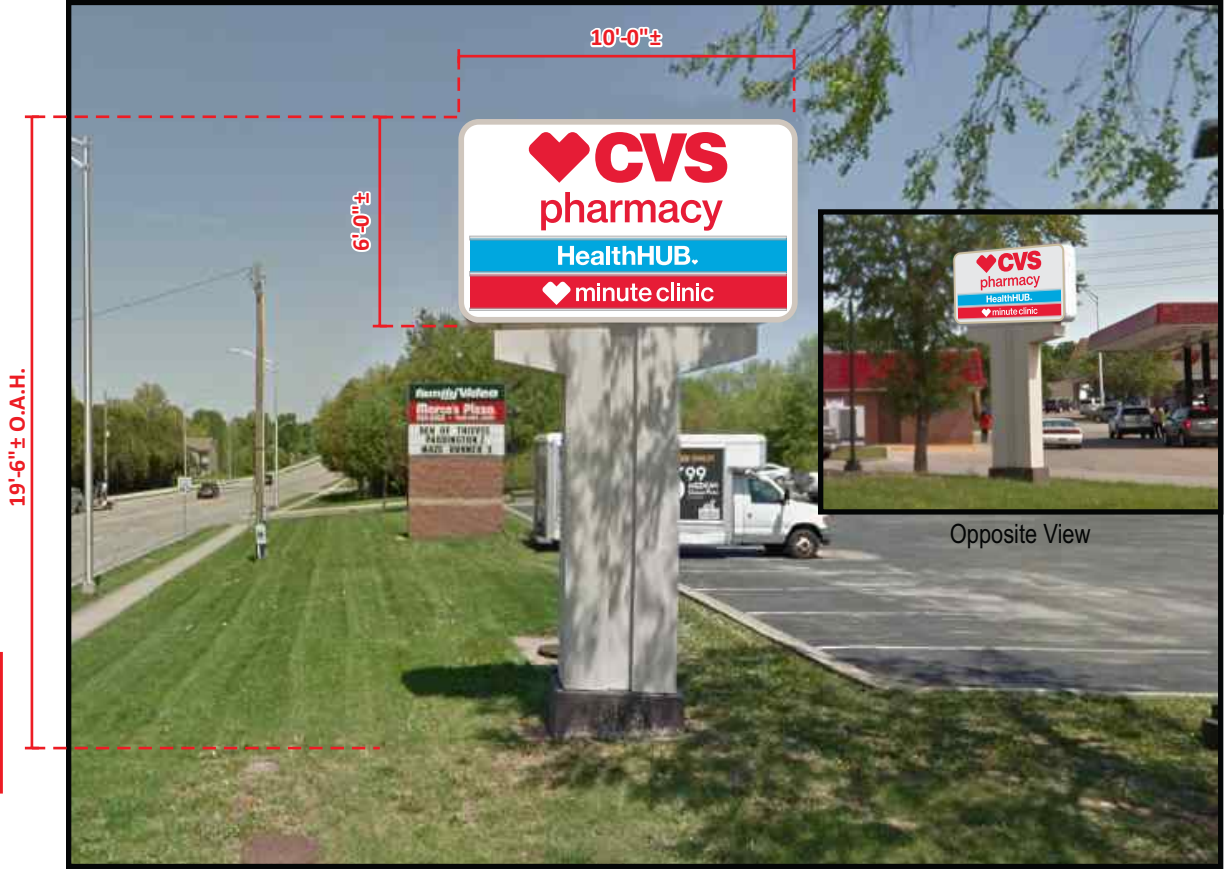
Existing Signage - Elevation

**Existing Sign #2**  
Pylon Sign w/ MRB  
(Illum. w/ Fluorescent Lamps) - 60.00 sq ft

S/F ☐ D/F ☒  
Yes ☒ No ☐

**Proposed Signage**

- REMOVE EXISTING FORMED CABINET FACES; REPLACE w/ NEW FLAT LEXAN FACES w/ 'HH' & 'MC' ZIP TRACK INSERTS
- LED RETROFIT CABINET
- \*REPLACE MISSING RETAINER AS REQUIRED



Proposed Signage - Elevation

**MAIN ID CABINET REFACE**

- 3/16" HI IMPACT WHITE LEXAN FACES w/ ACRYLIC HANG BARS TOP & BACK SIDE OF FACE;  
TRANSLUCENT VINYL GRAPHICS APPLIED ACCORDINGLY

- \*FACES TO HAVE 3M 3635-22b "BLOCKOUT" VINYL FILM APPLIED SECOND SURFACE TO ALLOW FOR ILLUMINATION; LOGO & TAGLINE/INSERT AREA ARE CUT OUT
- \*LOGO CUT-OUT HAS 1/8"± OFFSET AROUND EACH ELEMENT TO CREATE WHITE OUTLINE "HALO" TO ENHANCE VISIBILITY
- \*REMAINDER OF FACE DOES NOT ILLUMINATE

- TAGLINE TO BE 1/16" THICK CLEAR POLYCARBONATE 12 3/8"H INSERT PANELS w/ TRANSLUCENT VINYL APPLIED 1st SURFACE TO INSERT PANEL; COPY WEEDED OUT TO SHOW-THRU WHITE

\*PANEL TO BE MOUNTED BETWEEN PRONTO CLEAR COPY TRACK;  
(QTY:1 @ 1 3/8"H TOP TRACK)  
(QTY:1 @ 1 5/8"H MUTUAL TRACK)  
(QTY:1 @ 7/8"H BOTTOM TRACK)

**NOTE:**

- SURVEY INFORMATION MISSING FOR THIS PYLON BUT APPEARS TO BE IDENTICAL TO PYLON SIGN #1
- MANUFACTURING SURVEY REQUIRED PRIOR TO FABRICATION

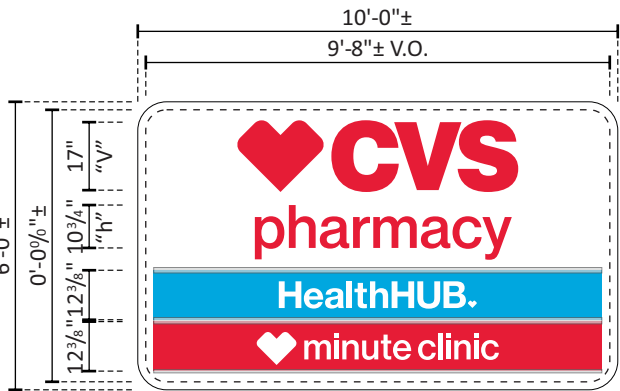


NIGHT ILLUMINATION

VINYL

☒ TO MATCH PMS 2995

☒ CARDINAL RED; 3M 3630-53



60 SqFt

**2 REPLACEMENT FACES** SCALE: 1/4" = 1' - 0"  
TWO [2] SETS REQUIRED - MFR. & INSTALL

Drawing prepared by:



**RECOMMENDATION**

Location:  
1900 N.E. LANGSFORD ROAD  
LEES SUMMIT, MISSOURI

File Path:

Loc #:  
08557

Drawing prepared for:



Rev #:	Req#:	Date:	Req. By:	Drawn By:	Revision Description:	Rev #:	Req#:	Date:	Req. By:	Drawn By:
Original	0406714	06/24/20	WF	XX	This drawing is the property of Chandler Signs, LLC. All rights to its use for reproduction are reserved by Chandler Signs, LLC.	Rev 1		07/14/20		BR
Rev 1		07/14/20		BR	Update to HH branding signage.	Rev 2		08/03/20		BR
Rev 2		08/03/20		BR	Various revisions.	Rev 3		08/28/20		BR
Rev 3		08/28/20		BR	Update with new HH specs.	Rev 4		10/06/20		BR
Rev 4		10/06/20		BR	Update art	Rev 5				
Rev 5						Rev 6				
Rev 6						Rev 7				
						Rev 8				
						Rev 9				
						Rev 10				

### Existing Sign #3

42" Main ID Letterset - 128.28 sq ft  
Illuminated

S/F ☒ D/F ☐  
Yes ☒ No ☐

### Existing Sign #4

MC Window Light Box - 5.33 sq ft  
Illuminated

S/F ☐ D/F ☒  
Yes ☒ No ☐

### Existing Sign #5

MC Window Light Box - 5.33 sq ft  
Illuminated

S/F ☐ D/F ☒  
Yes ☒ No ☐

### Existing Sign #6

MoneyGram Window Light Box - 5.33 sq ft  
Illuminated

S/F ☐ D/F ☒  
Yes ☒ No ☐

- REMOVE MAIN ID SIGNAGE AS REQUIRED; REPAIR & RESTORE FASCIA AS NEEDED
- REPLACE EXISTING 'MC' LIGHT BOX INSERTS; RELOCATE AS SHOWN
- RELOCATE 'MONEYGRAM' LIGHT BOX AS SHOWN
- \*ALL LIGHT BOXES ARE TO BE ALIGNED VERTICALLY
- NEW BRANCH ELECTRICAL CIRCUITS NEEDED



Existing Signage - Short Front Elevation



Proposed Signage - Short Front Elevation

3

4

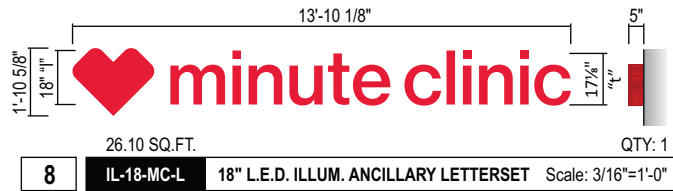
5

6

7

8

### Proposed Signage

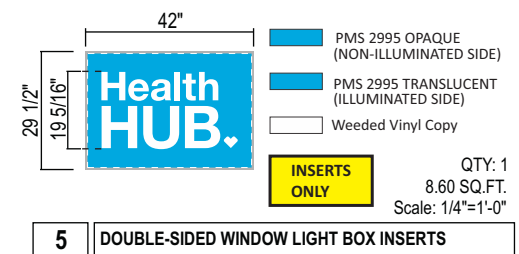
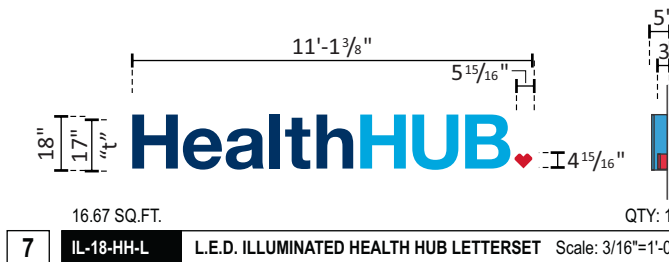
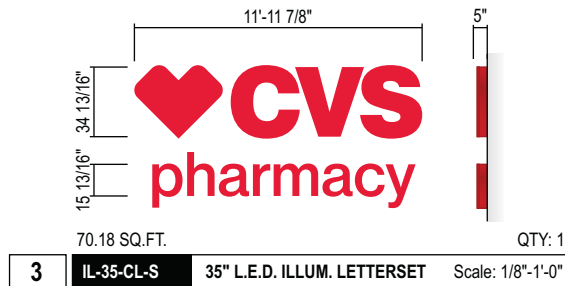


### RELOCATE ONLY

6 EXISTING 'MONEYGRAM' LIGHT BOX

### REMOVAL ONLY

4 EXISTING 'MC' LIGHT BOX



Drawing prepared by:

### RECOMMENDATION

Location:  
1900 N.E. LANGSFORD ROAD  
LEES SUMMIT, MISSOURI

File Path:

Loc #:  
08557

Drawing prepared for:



Rev #:	Req#:	Date:	Req. By:	Drawn By:	Revision Description:	Rev #:	Req#:	Date:	Req. By:	Drawn By:
Original	0406714	06/24/20	WF	XX	This drawing is the property of Chandler Signs, LLC. All rights to its use for reproduction are reserved by Chandler Signs, LLC.	Rev 1		07/14/20	BR	Update to HH branding signage.
Rev 1		07/14/20		BR	Various revisions.	Rev 2		08/03/20		
Rev 2		08/03/20		BR	Update with new HH specs.	Rev 3		08/28/20		
Rev 3		08/28/20		BR	Update art	Rev 4		10/06/20		
Rev 4		10/06/20		BR		Rev 5				
Rev 5						Rev 6				
Rev 6						Rev 7				
						Rev 8				
						Rev 9				
						Rev 10				





Existing Signage - Entrance Elevation

### Existing Sign #9

Hours Plaque - 2.4 sq ft  
Illuminated

S/F ☒ D/F ☐  
Yes ☐ No ☒

**REMOVE EXISTING HOURS PLAQUE; REPLACE w/ NEW HOURS PLAQUE MOUNTED TO BUILDING**

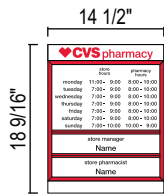
**\*INSTALL HOURS PLAQUE ON THE RIGHT SIDE OF THE ENTRY 60" UP FROM GRADE TO CENTERLINE & WITHIN 48" OF THE ENTRANCE\***



Proposed Signage - Entrance Elevation

### Proposed Signage

Not To Scale Unless Noted



QTY: 1

1.87 SQ.FT.

Scale: 1/2"=1'-0"

### Note:

- DM orders new inserts via DM order guide.
- Install at 60" from grade to center of plaque

9

NON-ILLUM. HOURS PLAQUE

Drawing prepared by:

### RECOMMENDATION

Location:  
1900 N.E. LANGSFORD ROAD  
LEES SUMMIT, MISSOURI

File Path:

Loc #:

08557

Drawing prepared for:



Rev #:	Req#:	Date:	Req. By:	Drawn By:	Revision Description:	This drawing is the property of Chandler Signs, LLC. All rights to it's use for reproduction are reserved by Chandler Signs, LLC.				
Original	0406714	06/24/20	WF	XX						
Rev 1		07/14/20		BR	Update to HH branding signage.	Rev #:	Req#:	Date:	Req. By:	Drawn By:
Rev 2		08/03/20		BR	Various revisions.	Rev 7				
Rev 3		08/28/20		BR	Update with new HH specs.	Rev 8				
Rev 4		10/06/20		BR	Update art	Rev 9				
Rev 5						Rev 10				
Rev 6										

### Existing Sign #10

48" Main ID Letterset - 133.66 sq ft  
Illuminated

S/F ☒ D/F ☐  
Yes ☒ No ☐

### Existing Sign #11

18" Beer & Wine - 19.5 sq ft  
Illuminated

S/F ☒ D/F ☐  
Yes ☒ No ☐

### Existing Sign #12

18" Minute Clinic Letterset - 19.5 sq ft  
Illuminated

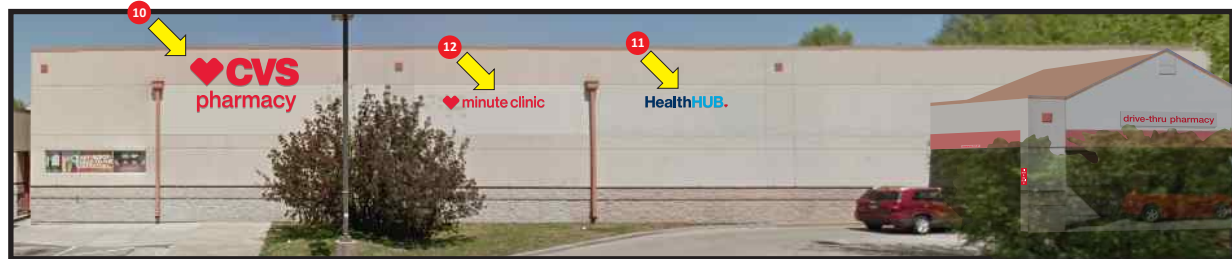
S/F ☒ D/F ☐  
Yes ☒ No ☐

**- REMOVE MAIN ID & ANCILLARY SIGNAGE AS REQUIRED;  
REPAIR & RESTORE FASCIA AS NEEDED**

**\*TRIM SHRUBS AS NEEDED\***



Existing Signage - DTP Elevation



Proposed Signage - DTP Elevation

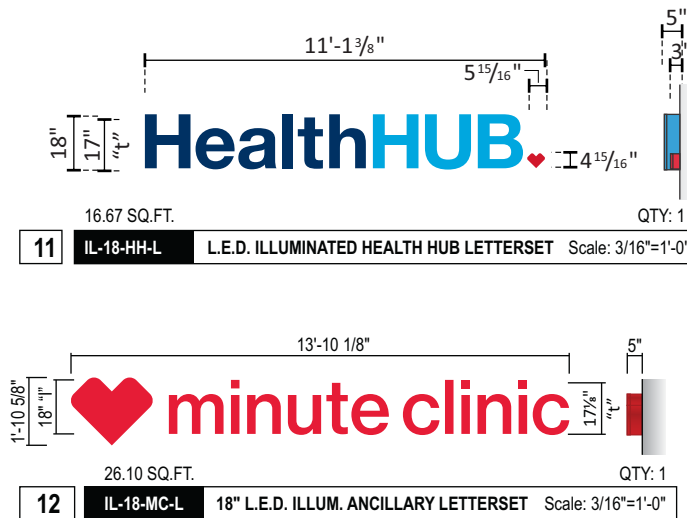
10

11

12

### Proposed Signage

Not To Scale Unless Noted



Drawing prepared by:

### RECOMMENDATION

Location:  
1900 N.E. LANGSFORD ROAD  
LEES SUMMIT, MISSOURI

File Path:

Loc #:  
08557

Drawing prepared for:



Rev #:	Req#:	Date:	Req. By:	Drawn By:	Revision Description:	Rev #:	Req#:	Date:	Req. By:	Drawn By:
Original	0406714	06/24/20	WF	XX	This drawing is the property of Chandler Signs, LLC. All rights to it's use for reproduction are reserved by Chandler Signs, LLC.					
Rev 1		07/14/20		BR	Update to HH branding signage.	Rev 7				
Rev 2		08/03/20		BR	Various revisions.	Rev 8				
Rev 3		08/28/20		BR	Update with new HH specs.	Rev 9				
Rev 4		10/06/20		BR	Update art	Rev 10				
Rev 5										
Rev 6										



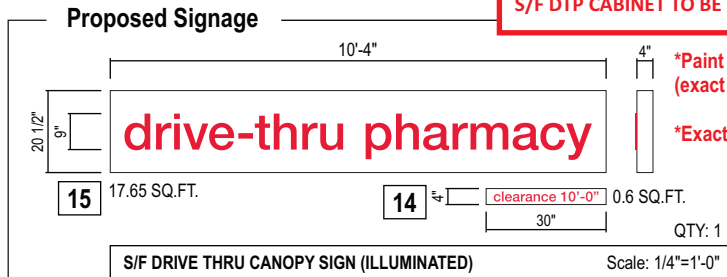
Existing Signage - DTP Canopy Elevation

<b>Existing Sign #13</b> Clearance Panel - 2.66 sq ft Illuminated	S/F <input checked="" type="checkbox"/> D/F <input type="checkbox"/> Yes <input type="checkbox"/> No <input checked="" type="checkbox"/>
<b>Existing Sign #14</b> DOO Flag Mounted Panel - 5.39 sq ft Illuminated	S/F <input checked="" type="checkbox"/> D/F <input type="checkbox"/> Yes <input type="checkbox"/> No <input checked="" type="checkbox"/>
<b>Existing Sign #15</b> 24" RxDRIVE-THRU Letterset - 34.66 sq ft Illuminated	S/F <input checked="" type="checkbox"/> D/F <input type="checkbox"/> Yes <input checked="" type="checkbox"/> No <input type="checkbox"/>
<b>Existing Sign #16</b> 7" EXIT fco's - 0.1245 sq ft Illuminated	S/F <input checked="" type="checkbox"/> D/F <input type="checkbox"/> Yes <input type="checkbox"/> No <input checked="" type="checkbox"/>
<b>Existing Sign #17</b> One Way/DNE Panel - 0.1245 sq ft Illuminated	S/F <input checked="" type="checkbox"/> D/F <input type="checkbox"/> Yes <input type="checkbox"/> No <input checked="" type="checkbox"/>
<b>Existing Sign #18</b> DO/Pick Up Plaque - 1.50 sq ft Illuminated	S/F <input checked="" type="checkbox"/> D/F <input type="checkbox"/> Yes <input type="checkbox"/> No <input checked="" type="checkbox"/>



Proposed Signage - DTP Canopy Elevation

- REMOVE SIGNAGE AS REQUIRED
- FASCIA REPAIR & RESTORATION NEEDED
- INSTALL CLEARANCE PLAQUE ON CANOPY APPROACH:
- S/F DTP CABINET TO BE INSTALLED ON SIDE OF CANOPY



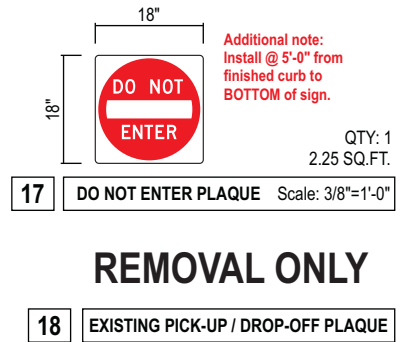
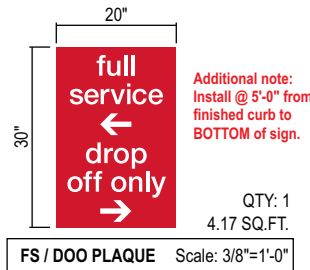
\*Paint dtp cabinet to match fascia  
(exact color T.B.D.)

\*Exact clearance T.B.D

**REMOVAL ONLY**

16 EXISTING EXIT FCO LETTERS

13



**REMOVAL ONLY**

18 EXISTING PICK-UP / DROP-OFF PLAQUE

Drawing prepared by:

**RECOMMENDATION**

Location:  
1900 N.E. LANGSFORD ROAD  
LEES SUMMIT, MISSOURI

File Path:

Loc #:  
08557

Drawing prepared for:



Rev #:	Req#:	Date:	Req. By:	Drawn By:	Revision Description:	Rev #:	Req#:	Date:	Req. By:	Drawn By:
Original	0406714	06/24/20	WF	XX	This drawing is the property of Chandler Signs, LLC. All rights to it's use for reproduction are reserved by Chandler Signs, LLC.	Rev 1				
Rev 1		07/14/20		BR	Update to HH branding signage.	Rev 2				
Rev 2		08/03/20		BR	Various revisions.	Rev 3				
Rev 3		08/28/20		BR	Update with new HH specs.	Rev 4				
Rev 4		10/06/20		BR	Update art	Rev 5				
Rev 5						Rev 6				
Rev 6						Rev 7				
						Rev 8				
						Rev 9				
						Rev 10				





Existing Signage - @ Rear Elevation

**Existing Sign #19**  
Receiving Door Plaque - 3 sq ft  
Illuminated

S/F ☒ D/F ☐

Yes ☐ No ☒



Proposed Signage - @ Rear Elevation

Proposed Signage

Not To Scale Unless Noted

18"

24"

receiving entrance

CVS pharmacy

QTY: 1  
3.0 SQ.FT.  
Scale: 1/2"=1'-0"

19

NON-ILLUM. DOOR PLAQUE

Drawing prepared by:

RECOMMENDATION

Drawing prepared for:

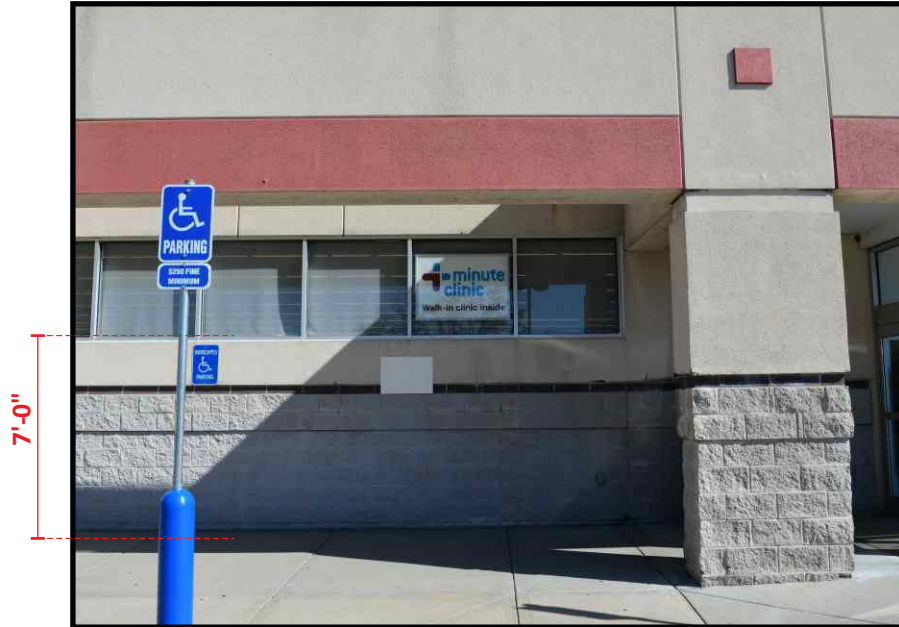


Location:  
1900 N.E. LANGSFORD ROAD  
LEES SUMMIT, MISSOURI  
File Path:

Loc #:  
08557



Rev #:	Req#:	Date:	Req. By:	Drawn By:	Revision Description:	This drawing is the property of Chandler Signs, LLC. All rights to it's use for reproduction are reserved by Chandler Signs, LLC.				
Original	0406714	06/24/20	WF	XX						
Rev 1		07/14/20		BR	Update to HH branding signage.	Rev #:	Req#:	Date:	Req. By:	Drawn By:
Rev 2		08/03/20		BR	Various revisions.	Rev 7				
Rev 3		08/28/20		BR	Update with new HH specs.	Rev 8				
Rev 4		10/06/20		BR	Update art	Rev 9				
Rev 5						Rev 10				
Rev 6										



**NOTE: DISTANCE FROM SIDEWALK TO BASE OF SILLS**

Drawing prepared by:



### WINDOW PHOTOS

Location:  
1900 N.E. LANGSFORD ROAD  
LEES SUMMIT, MISSOURI  
File Path:

Loc #:  
08557

Drawing prepared for:



Rev #:	Req#:	Date:	Req. By:	Drawn By:	Revision Description:	This drawing is the property of Chandler Signs, LLC. All rights to it's use for reproduction are reserved by Chandler Signs, LLC.				
Original	0406714	06/24/20	WF	XX						
Rev 1		07/14/20		BR	Update to HH branding signage.	Rev #:	Req#:	Date:	Req. By:	Drawn By:
Rev 2		08/03/20		BR	Various revisions.	Rev 7				
Rev 3		08/28/20		BR	Update with new HH specs.	Rev 8				
Rev 4		10/06/20		BR	Update art	Rev 9				
Rev 5						Rev 10				
Rev 6										






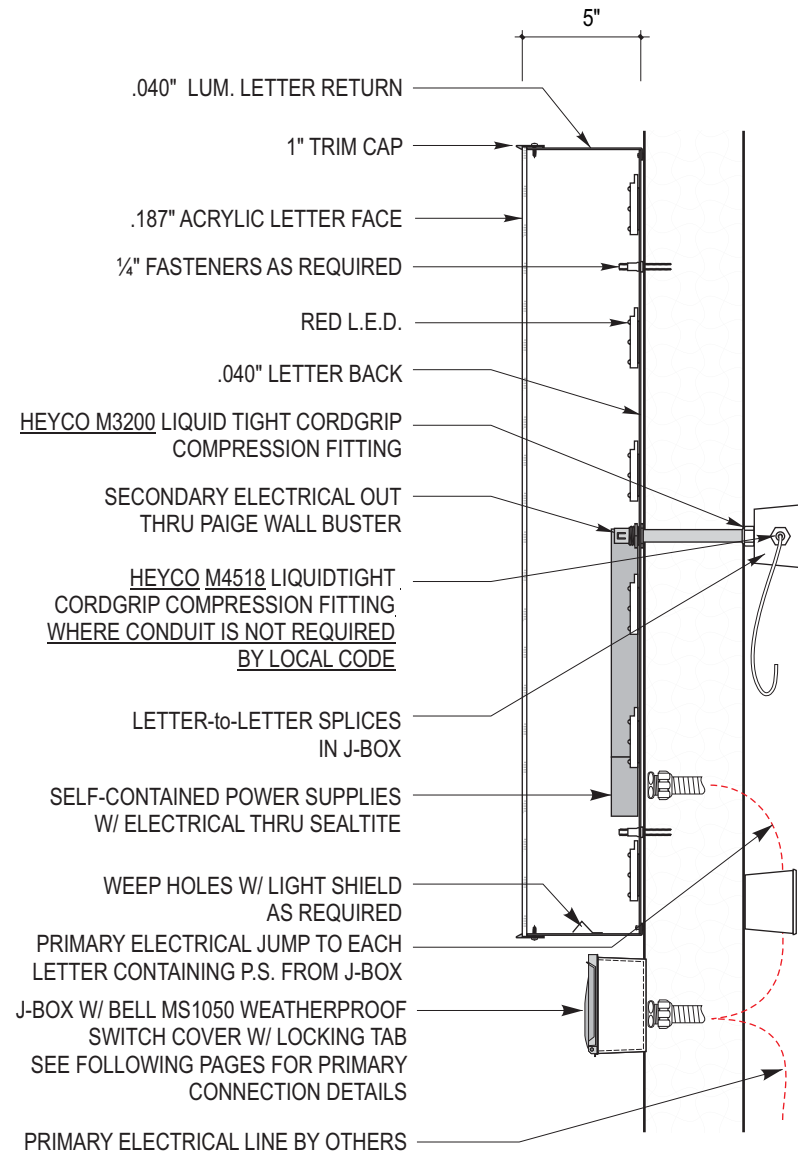
### Specifications

Internally Illuminated Channel Letters

- Chemcast 3/16" Red Acrylic Faces #2793
- 5" Deep Pre-Finished Hunter Red Returns
- \*Any channel letter set below 18" to be 3" deep
- 1" Jewelite True Red Trim Cap
- \*Any channel letter set below 30" to have 3/4" trim cap
- red led illumination
- 120v power supplies
- mounted to existing fascia as required

### Colors & Materials

-  Chemcast Red Acrylic #2793
-  Jewelite True Red Trim Cap
-  Pre-Finished Hunter Red Returns



3

10

12

### SECTION DETAIL

N.T.S.



Drawing prepared by:

### CONSTRUCTION DRAWINGS

Drawing prepared for:



Location:  
1900 N.E. LANGSFORD ROAD  
LEES SUMMIT, MISSOURI

File Path:

Loc #:  
08557



Rev #:	Req#:	Date:	Req. By:	Drawn By:	Revision Description:	This drawing is the property of Chandler Signs, LLC. All rights to it's use for reproduction are reserved by Chandler Signs, LLC.				
Original	0406714	06/24/20	WF	XX						
Rev 1		07/14/20		BR	Update to HH branding signage.	Rev #:	Req#:	Date:	Req. By:	Drawn By:
Rev 2		08/03/20		BR	Various revisions.	Rev 7				
Rev 3		08/28/20		BR	Update with new HH specs.	Rev 8				
Rev 4		10/06/20		BR	Update art	Rev 9				
Rev 5						Rev 10				
Rev 6										



# HealthHUB

## Specifications

### Internally Illuminated Channel Letters

#### Health Letters

- 3/16" White Acrylic Faces - #2447
- CVS Navy Vinyl - 3M Marine Blue 3630-287 (PMS 654)
- 5" Deep Returns Painted to Match PMS 654
- 3/4" Trim Cap Painted to Match PMS 654
- White LED Illumination
- Power Supplies

- Mounted to Existing Fascia as Required

#### HUB Letters

- 3/16" White Acrylic Faces - #2447
- CVS Blue Vinyl - 3M Light Blue 3630-7625 (PMS 2995)
- 5" Deep Returns Painted to Match PMS 2995
- 3/4" Trim Cap Painted to Match PMS 2995
- White LED Illumination
- Power Supplies

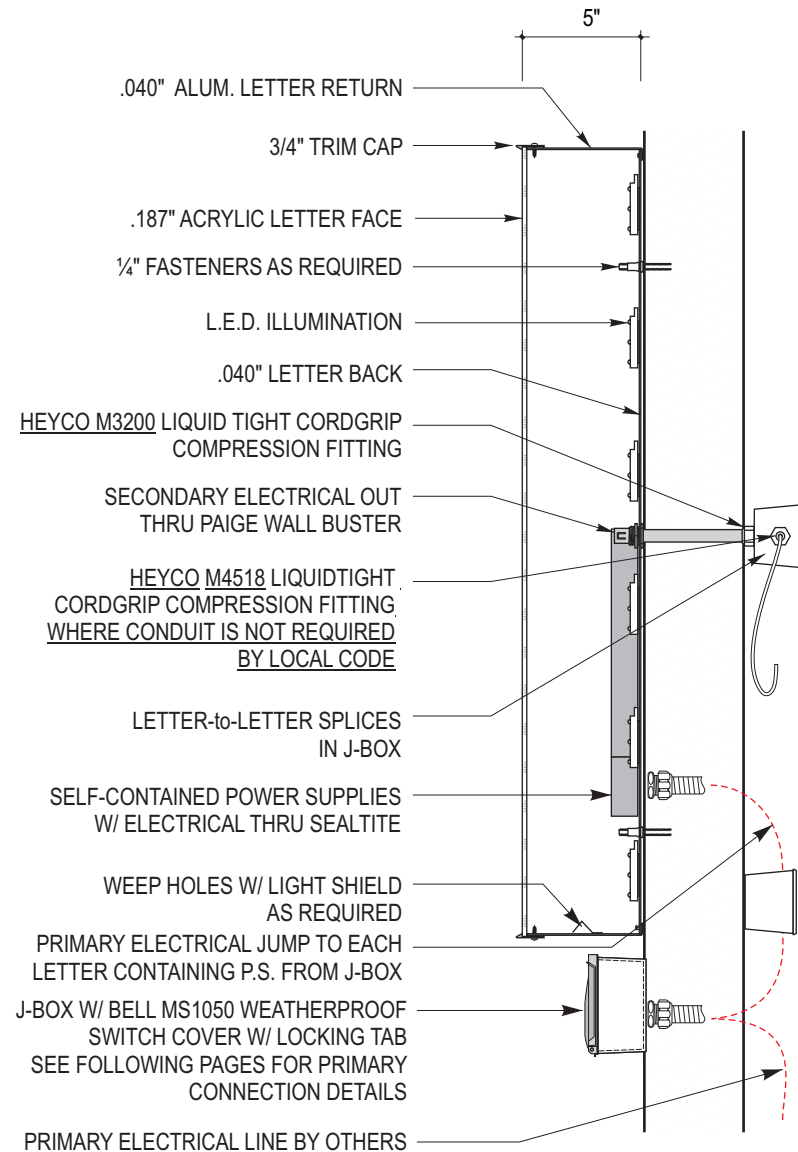
- Mounted to Existing Fascia as Required

#### Heart

- Chemcast 3/16" Red Acrylic Faces #2793
- 3" Deep pre-finished Hunter Red Returns
- 3/4" Jewelite True Red Trim Cap
- Red LED Illumination
- Power Supplies
- Mounted to Existing Fascia as Required

## Colors & Materials

- White Acrylic Faces - #2447
- 3M Marine Blue 3630-287 Vinyl (PMS 654)
- 3/4" Trim Cap Painted to Match PMS 654
- Returns Painted to Match PMS 654
- 3M Light Blue 3630-7625 Vinyl (PMS 2995)
- 3/4" Trim Cap Painted to Match PMS 2995
- Returns Painted to Match PMS 2995
- Chemcast Red Acrylic #2793
- Jewelite True Red Trim Cap
- Pre-Finished Hunter Red Returns



## SECTION DETAIL

N.T.S.



Drawing prepared by:

## CONSTRUCTION DRAWINGS

Location:  
1900 N.E. LANGSFORD ROAD  
LEES SUMMIT, MISSOURI

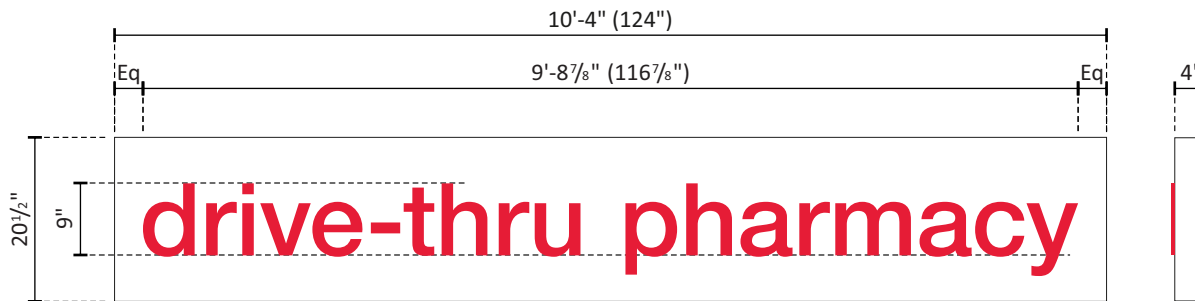
File Path:

Loc #:  
08557

Drawing prepared for:



Rev #:	Req#:	Date:	Req. By:	Drawn By:	Revision Description:	Rev #:	Req#:	Date:	Req. By:	Drawn By:
Original	0406714	06/24/20	WF	XX	This drawing is the property of Chandler Signs, LLC. All rights to it's use for reproduction are reserved by Chandler Signs, LLC.	Rev 7				
Rev 1		07/14/20		BR	Update to HH branding signage.	Rev 8				
Rev 2		08/03/20		BR	Various revisions.	Rev 9				
Rev 3		08/28/20		BR	Update with new HH specs.	Rev 10				
Rev 4		10/06/20		BR	Update art					
Rev 5										
Rev 6										

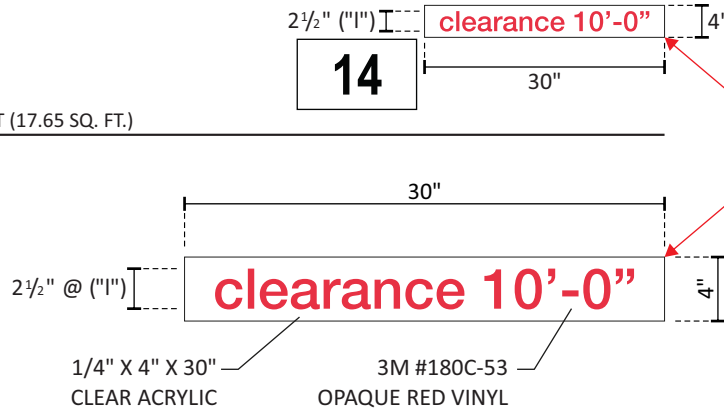


15

DETAIL - FRONT CANOPY SIGN LAYOUT (17.65 SQ. FT.)

SCALE: 1/2"=1'-0"

NOTE - EXACT CLEARANCE T.B.D.



DETAIL - CLEARANCE SIGN LAYOUT (0.6 SQ. FT.)

SCALE: 1"=1'-0"

#### COLORS & MATERIAL:

PAINTED TO MATCH CANOPY FACADE

3M #3630-53 TRANSLUCENT VINYL

3M #180C-53 OPAQUE VINYL

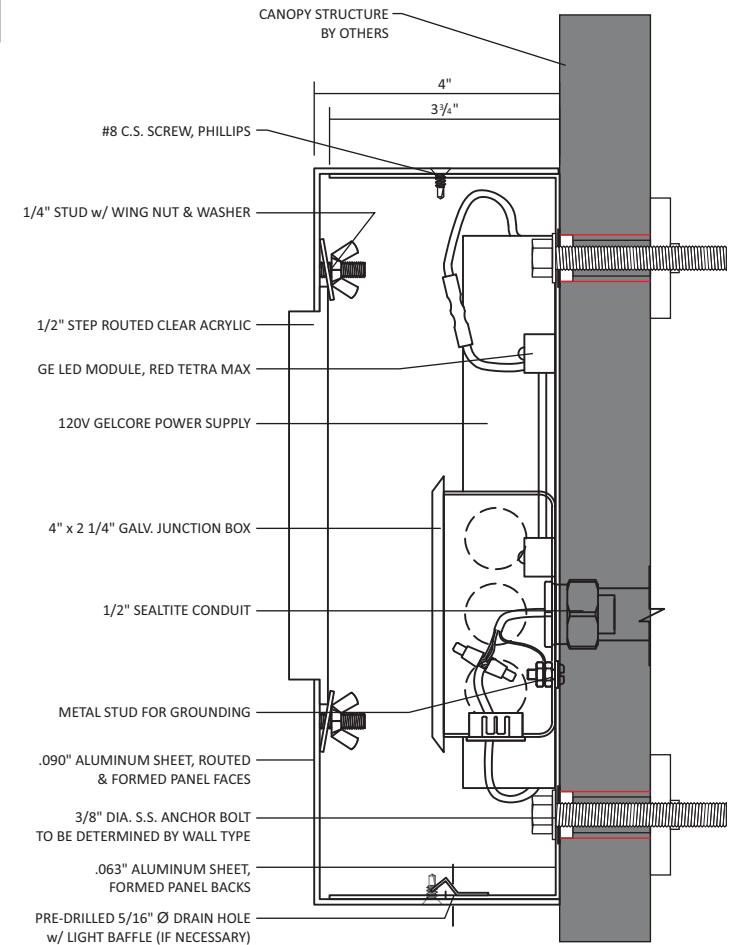
#### SPECIFICATIONS:

INTERNALLY ILLUMINATED S/F DRIVE-THRU CANOPY CABINET

#### SIDE CANOPY SIGN CABINET:

.063" ALUMINUM SHEET, FORMED PANEL BACKS, INTERIOR TO BE PAINTED  
VARIOUS CABINETS TO HOUSE LED POWER SUPPLIES w/ DISCONNECT SWITCH  
RED LED ILLUMINATION

FACE OF FRONT CANOPY SIGN TO BE .090" PAN FORMED ROUTED ALUMINUM SHEET, PAINTED TO MATCH CANOPY FACADE  
PUSH THRU LETTERS TO BE 1/2" STEP ROUTED CLEAR ACRYLIC w/ FIRST SURFACE 3M #3630-53 TRANSLUCENT VINYL DECORATION  
HEIGHT SIGNAGE REQUIREMENT "clearance xx'-xx" VINYL APPLICATION MUST BE FLEXIBLE FOR ONSITE EDITS,  
USE 3M #180C-53 OPAQUE VINYL DECORATION APPLIED ON A 1/4" x 1/4" x 30" CLEAR ACRYLIC  
USE 3/8" DIA. S.S. ANCHOR (MAY VARY PER WALL CONDITION) AT 48" O.C. MAX TO ATTACH SIGN TO EXISTING CANOPY  
USE #8 C.S. SCREW AT 18" O.C. MAX TO ATTACH ALUMINUM PAN FACE TO ALUMINUM BACK PANEL



#### SECTION (FRONT CANOPY)

Drawing prepared by:

#### CONSTRUCTION DRAWINGS

Location:  
1900 N.E. LANGSFORD ROAD  
LEES SUMMIT, MISSOURI

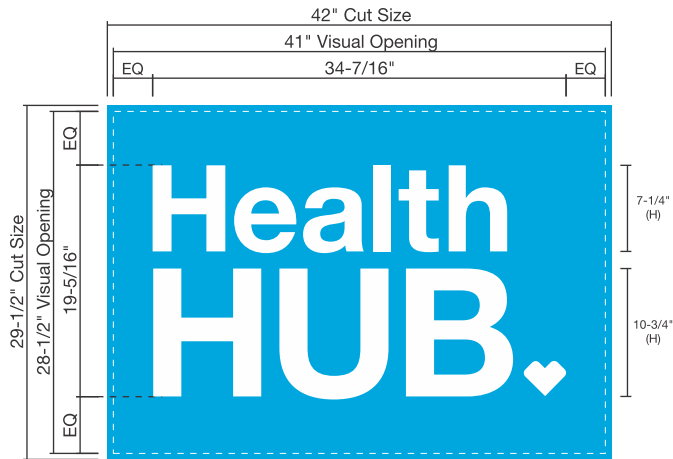
File Path:

Loc #:  
08557

Drawing prepared for:



Rev #:	Req#:	Date:	Req. By:	Drawn By:	Revision Description:	Rev #:	Req#:	Date:	Req. By:	Drawn By:
Original	0406714	06/24/20	WF	XX	This drawing is the property of Chandler Signs, LLC. All rights to its use for reproduction are reserved by Chandler Signs, LLC.	Rev 7				
Rev 1		07/14/20		BR	Update to HH branding signage.	Rev 8				
Rev 2		08/03/20		BR	Various revisions.	Rev 9				
Rev 3		08/28/20		BR	Update with new HH specs.	Rev 10				
Rev 4		10/06/20		BR	Update art					
Rev 5										
Rev 6										



Sign Elevation - Front View

Scale: 1"=1'-0"

#### Window Light Box Specifications

D/S Internally Illuminated Window Light Boxes

SOA™ LED Light Box (Profile D)

Powered by iFit™ LED Edge-Lit Technology

#### Dimensions

- Depth 1 1/4"
- Frame Size = 43 1/2" x 31"
- Cut Size = 29 1/2" H x 42" W
- Visual Opening = 28 1/2" H x 41" W
- Tolerance = ± 1/16"

#### Graphics

- Front Clear Protection Cover included

#### Frame

- Double-sided: 1-side illuminated / 1-side non-illuminated
- 4-sides Snap Open
- Anodized Aluminum
- Silver Color
- Landscape Ceiling Hang
- Individual Packed

#### Lighting & Power

- iFIT LED Edge-lit Light Panel enclosed (UL File# E341676)
- 6500K LEDs on 2 Longer Sides
- UL 120VDC/60Hz Adaptor included
- Electrical Cord: 6ft from Adaptor to Light Box; 2ft from Adaptor to Plug, 3-prong Plug

#### Hardware

- 2 sets of 6ft chain
- 4 "S" Hooks

# INSERTS ONLY REQUIRED



Not to Scale

#### Colors & Materials

3M Light Blue 3630-7625 (PMS 2995) Opaque (Non-Illuminated Side)

3M Light Blue 3630-7625 (PMS 2995) Translucent (Illuminated Side)

Weeded Vinyl Copy

Drawing prepared by:

#### CONSTRUCTION DRAWINGS

#### Location:

1900 N.E. LANGSFORD ROAD  
LEES SUMMIT, MISSOURI

#### Loc #:

08557

#### File Path:

Drawing prepared for:



Rev #:	Req#:	Date:	Req. By:	Drawn By:	Revision Description:	This drawing is the property of Chandler Signs, LLC. All rights to it's use for reproduction are reserved by Chandler Signs, LLC.				
Original	0406714	06/24/20	WF	XX						
Rev 1		07/14/20		BR	Update to HH branding signage.	Rev #:	Req#:	Date:	Req. By:	Drawn By:
Rev 2		08/03/20		BR	Various revisions.	Rev 7				
Rev 3		08/28/20		BR	Update with new HH specs.	Rev 8				
Rev 4		10/06/20		BR	Update art	Rev 9				
Rev 5						Rev 10				
Rev 6										