

STARBUCKS COFFEE #63039

Rt 291 & 150

150 SW M-150 Hwy

Lee's Summit MO



20-50278

***HILTON*DISPLAYS**

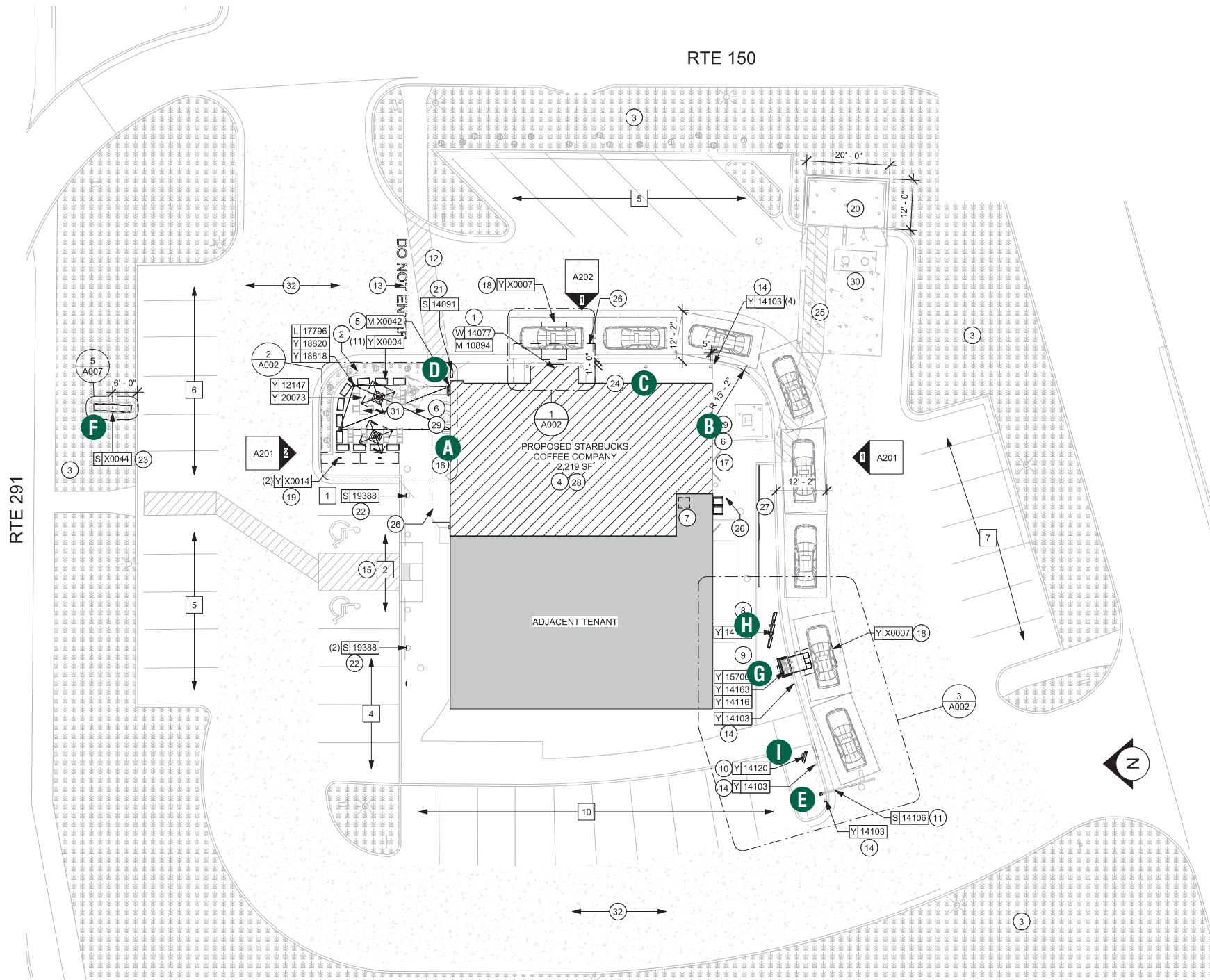
125 HILLSIDE DRIVE • GREENVILLE SC 29607

P 800 353 9132 • F 864 242 2204

www.hiltondisplays.com

SITE PLAN

- A 71" SIREN
- B 60" SIREN
- C 20" CHANNEL LETTERS
- D 30" TY/EO DIRECTIONAL
- E CLEARANCE BAR
- F PYLON FACES
- G DOS ON CANOPY / DCB
- H MENU BOARD
- I PRE-MENU BOARD



ARCHITECTURAL SITE PLAN - FOR REFERENCE ONLY

Scale: 1/16" = 1'-0"

QID 20-50278

JOB NAME

Starbucks 63039

LOCATION

Rt 291 & 150
150 SW M-150 Hwy
Lee's Summit MO

CUSTOMER CONTACT

SALESMAN / PM

Maddie Keller

DESIGNER

Glenn Miller

DWG. DATE

5-22-20

REV. DATE / REVISION

5-26-20

6-23-20

9-09-20

9-11-20

9-15-20

SCALE

Not to Scale

FILE

2020/Starbucks/
Lees Summit MO/20-50278/
SB Lees Summit MO 20-50278

DESIGN SPECIFICATIONS ACCEPTED BY:

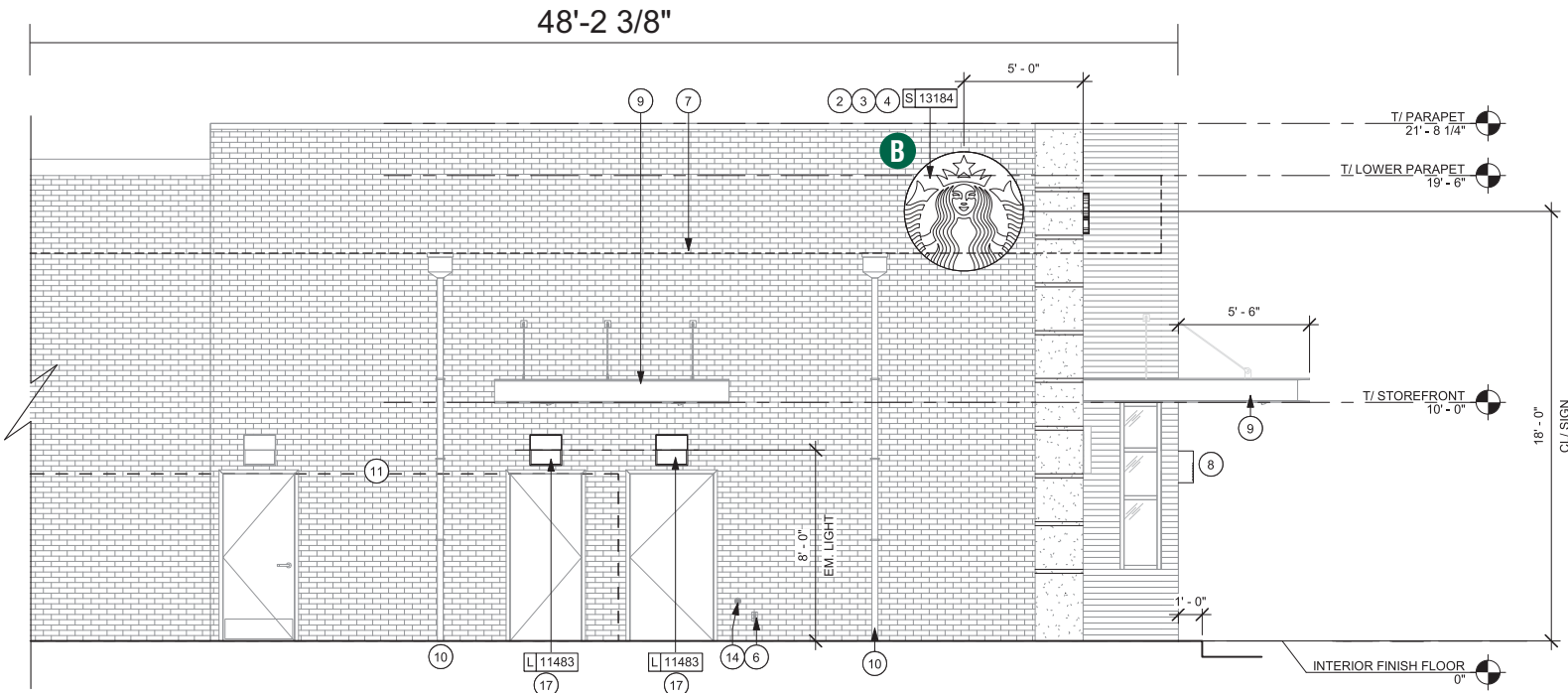
EST:	CLIENT:
SLS/PM:	LANDLORD:

THE INTENT OF THIS DRAWING IS TO SHOW A CONCEPTUAL REPRESENTATION OF THE PROPOSED SIGNAGE. DUE TO VARIATIONS IN PRINTING DEVICES AND SUBSTRATES, THE FINISHED PRODUCT MAY DIFFER SLIGHTLY FROM DRAWING.



ELEVATION

- A 71” SIREN
- B 60” SIREN
- C 20” CHANNEL LETTERS
- D 30” TY/EO DIRECTIONAL
- E CLEARANCE BAR
- F PYLON FACES
- G DOS ON CANOPY / DCB
- H MENU BOARD
- I PRE-MENU BOARD



1 SOUTH ELEVATION
Scale: 1/8" = 1' (11x17 Paper)

QID 20-50278

JOB NAME

Starbucks 63039

LOCATION

Rt 291 & 150
150 SW M-150 Hwy
Lee's Summit MO

CUSTOMER CONTACT

SALESMAN / PM

Maddie Keller

DESIGNER

Glenn Miller

DWG. DATE

5-22-20

REV. DATE / REVISION

5-26-20

6-23-20

9-09-20

9-11-20

9-15-20

SCALE

Not to Scale

FILE

2020/Starbucks/
Lees Summit MO/20-50278/
SB Lees Summit MO 20-50278

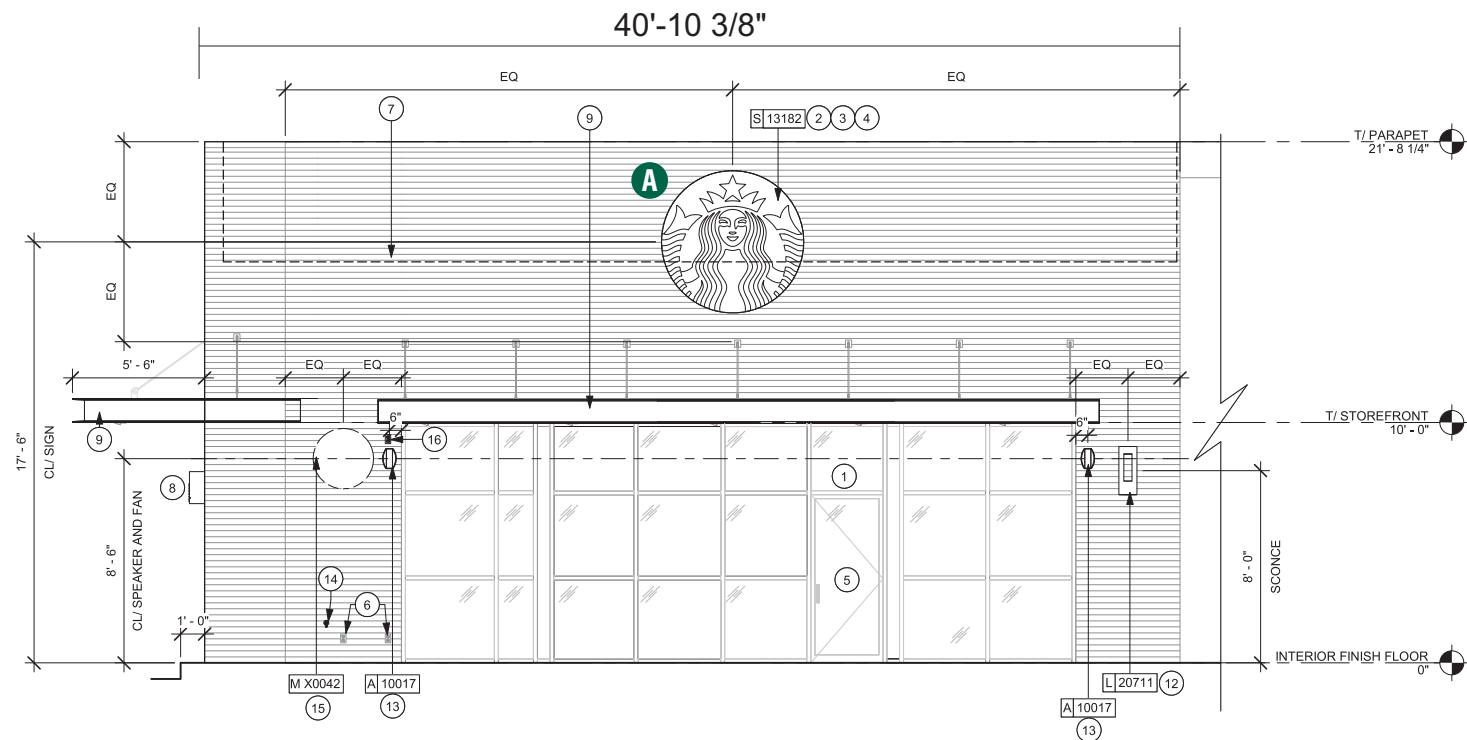
DESIGN SPECIFICATIONS ACCEPTED BY:

EST:	CLIENT:
SLS/PM:	LANDLORD:

THE INTENT OF THIS DRAWING IS TO SHOW A CONCEPTUAL REPRESENTATION OF THE PROPOSED SIGNAGE. DUE TO VARIATIONS IN PRINTING DEVICES AND SUBSTRATES, THE FINISHED PRODUCT MAY DIFFER SLIGHTLY FROM DRAWING.

ELEVATION

- A 71” SIREN
- B 60” SIREN
- C 20” CHANNEL LETTERS
- D 30” TY/EO DIRECTIONAL
- E CLEARANCE BAR
- F PYLON FACES
- G DOS ON CANOPY / DCB
- H MENU BOARD
- I PRE-MENU BOARD



2 NORTH ELEVATION
Scale: 1/8" = 1' (11x17 Paper)

QID 20-50278

JOB NAME

Starbucks 63039

LOCATION

Rt 291 & 150
150 SW M-150 Hwy
Lee's Summit MO

CUSTOMER CONTACT

SALESMAN / PM

Maddie Keller

DESIGNER

Glenn Miller

DWG. DATE

5-22-20

REV. DATE / REVISION

5-26-20

6-23-20

9-09-20

9-11-20

9-15-20

SCALE

Not to Scale

FILE

2020/Starbucks/
Lees Summit MO/20-50278/
SB Lees Summit MO 20-50278

DESIGN SPECIFICATIONS ACCEPTED BY:

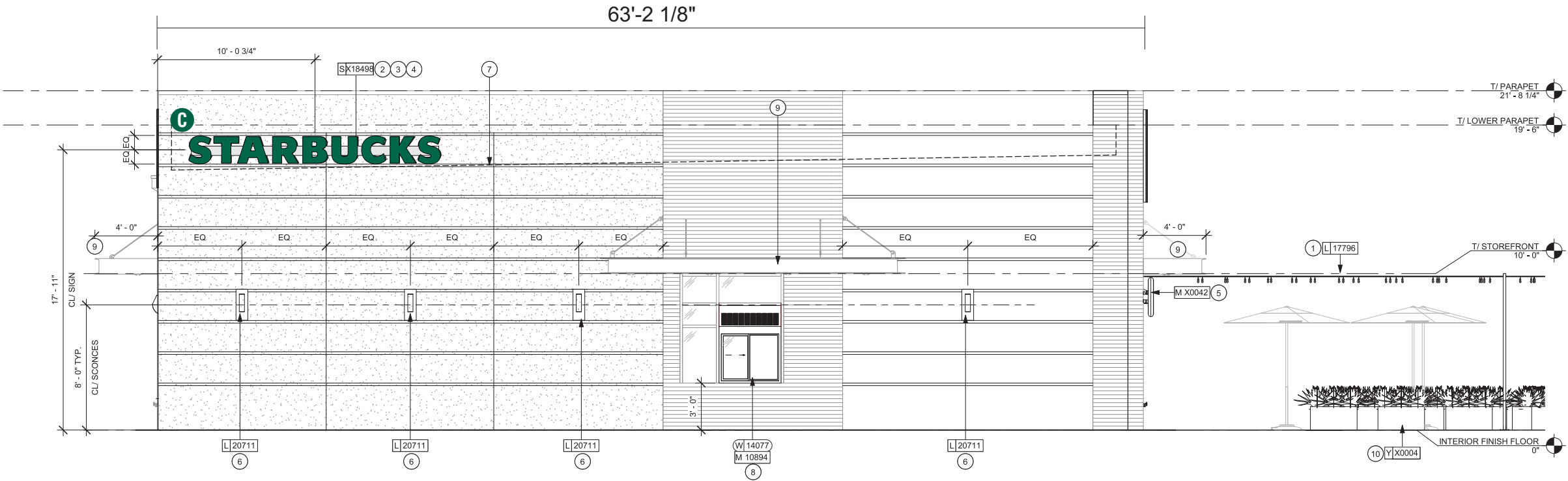
EST:	CLIENT:
SLS/PM:	LANDLORD:

THE INTENT OF THIS DRAWING IS TO SHOW A CONCEPTUAL REPRESENTATION OF THE PROPOSED SIGNAGE. DUE TO VARIATIONS IN PRINTING DEVICES AND SUBSTRATES, THE FINISHED PRODUCT MAY DIFFER SLIGHTLY FROM DRAWING.



ELEVATION

- A 71" SIREN
- B 60" SIREN
- C 20" CHANNEL LETTERS
- D 30" TY/EO DIRECTIONAL
- E CLEARANCE BAR
- F PYLON FACES
- G DOS ON CANOPY / DCB
- H MENU BOARD
- I PRE-MENU BOARD



1 EAST ELEVATION
Scale: 1/8" = 1' (11x17 Paper)

HILTONDISPLAYS
125 HILLSIDE DRIVE • GREENVILLE SC 29607
P 800 353 9132 • F 864 242 2204
www.hiltondisplays.com

QID 20-50278

JOB NAME

Starbucks 63039

LOCATION

Rt 291 & 150
150 SW M-150 Hwy
Lee's Summit MO

CUSTOMER CONTACT

SALESMAN / PM

Maddie Keller

DESIGNER

Glenn Miller

DWG. DATE

5-22-20

REV. DATE / REVISION

5-26-20

6-23-20

9-09-20

9-11-20

9-15-20

SCALE

Not to Scale

FILE

2020/Starbucks/
Lees Summit MO/20-50278/
SB Lees Summit MO 20-50278

DESIGN SPECIFICATIONS ACCEPTED BY:

EST:	CLIENT:
SLS/PM:	LANDLORD:

THE INTENT OF THIS DRAWING IS TO SHOW A CONCEPTUAL REPRESENTATION OF THE PROPOSED SIGNAGE. DUE TO VARIATIONS IN PRINTING DEVICES AND SUBSTRATES, THE FINISHED PRODUCT MAY DIFFER SLIGHTLY FROM DRAWING.



71” ILLUMINATED SIREN

Qty. 1 SBC-S13182-SL

A



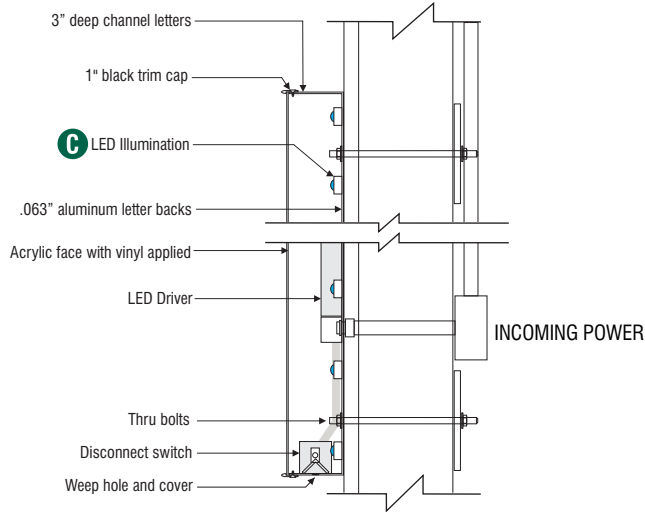
3/4" = 1' (11x17 Paper)

1 Front View

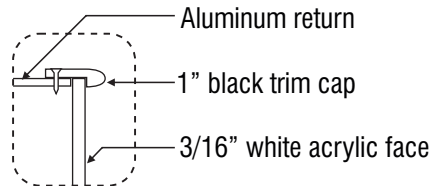
3" (76mm)

A

4 Side View



3 Disk Section View Typ.



4 Enlarged Detail

SPECIFICATIONS:

- A Single faced internally illuminated wall mount logo disk. Cabinet to be 3" deep, fabricated aluminum returns and back. Paint cabinet black. Faces to be 3/16" white Plex with 1" black trimcap
- B Graphics of logo to be 1st surface 3M Translucent Scotchcal vinyl- Holly Green #3630-76. Siren to show thru White.
- C Internally illuminated logo disk with Sloan Prism Enlighten 6500K white LED's

COLOR LEGEND		
	PMS/PAINT	VINYL
	PMS 3425 C	3M 3630-76
	RAL 7021M	3M 3630-22
	PMS WHITE	3M 3630-20/ 7725-10 TRANSLUCENT OPAQUE
	PMS 369 C	NA
	REFL. WHITE	3M 680-10

Disk 71in (1803mm) S/F Illuminated Flush Mounted Wall Sign EVOLVED			
Size	Sq.Ft.	Sq.M.	Volts
71" (1803mm)	27.49	2.55	120/277

HILTONDISPLAYS
125 HILLSIDE DRIVE • GREENVILLE SC 29607
P 800 353 9132 • F 864 242 2204
www.hiltondisplays.com

QID 20-50278

JOB NAME

Starbucks 63039

LOCATION

Rt 291 & 150
150 SW M-150 Hwy
Lee's Summit MO

CUSTOMER CONTACT

SALESMAN / PM

Maddie Keller

DESIGNER

Glenn Miller

DWG. DATE

5-22-20

REV. DATE / REVISION

5-26-20

6-23-20

9-09-20

9-11-20

9-15-20

SCALE

Not to Scale

FILE

2020/Starbucks/
Lees Summit MO/20-50278/
SB Lees Summit MO 20-50278

DESIGN SPECIFICATIONS ACCEPTED BY:

EST:	CLIENT:
SLS/PM:	LANDLORD:

THE INTENT OF THIS DRAWING IS TO SHOW A CONCEPTUAL REPRESENTATION OF THE PROPOSED SIGNAGE. DUE TO VARIATIONS IN PRINTING DEVICES AND SUBSTRATES, THE FINISHED PRODUCT MAY DIFFER SLIGHTLY FROM DRAWING.



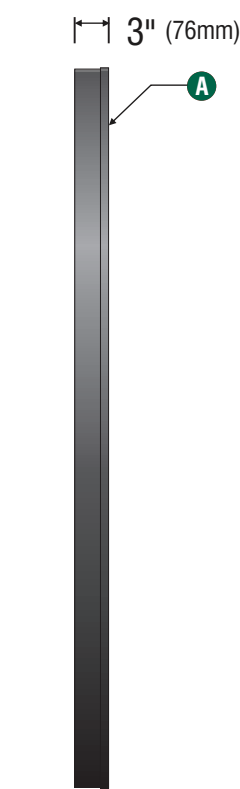
60" ILLUMINATED SIREN

Qty. 1 SBC-S13164-SL

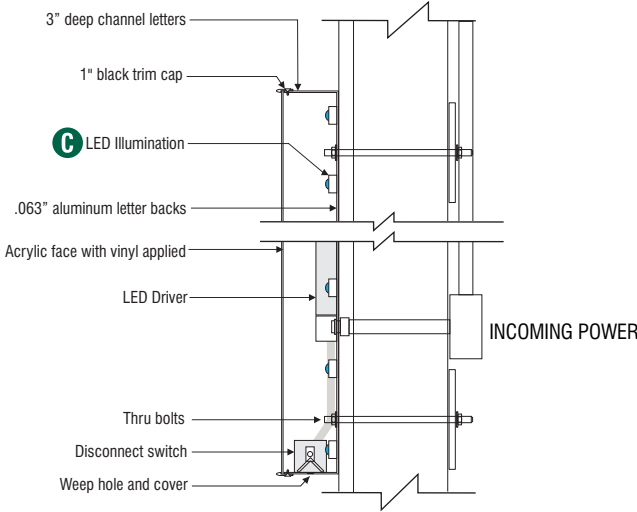
B



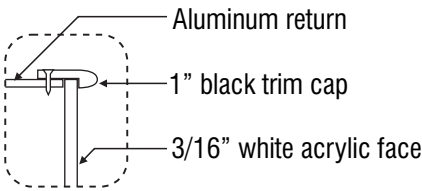
1 Front View
3/4" = 1'-0" (11x17 Paper)



2 Side View



3 Disk Section View Typ.



4 Enlarged Detail

SPECIFICATIONS:

- A Single faced internally illuminated wall mount logo disk. Cabinet to be 3" deep, fabricated aluminum returns and back. Paint cabinet black. Faces to be 3/16" white Plex with 1" black trimcap
- B Graphics of logo to be 1st surface 3M Translucent Scotchcal vinyl- Holly Green #3630-76. Siren to show thru White.
- C Internally illuminated logo disk with Sloan Prism Enlighten 6500K white LEDs

COLOR LEGEND		
	PMS/PAINT	VINYL
	PMS 3425 C	3M 3630-76
	RAL 7021M	3M 3630-22
	PMS WHITE	3M 3630-20/ 7725-10 TRANSLUCENT OPAQUE
	PMS 369 C	NA
	REFL. WHITE	3M 680-10

Wall Mount EVOLVED			
Size	Sq.Ft.	Sq.M.	Volts
60" (1524mm)	19.62	1.82	120/277

HILTONDISPLAYS
125 HILLSIDE DRIVE • GREENVILLE SC 29607
P 800 353 9132 • F 864 242 2204
www.hiltondisplays.com

QID 20-50278

JOB NAME

Starbucks 63039

LOCATION

Rt 291 & 150
150 SW M-150 Hwy
Lee's Summit MO

CUSTOMER CONTACT

SALESMAN / PM

Maddie Keller

DESIGNER

Glenn Miller

DWG. DATE

5-22-20

REV. DATE / REVISION

5-26-20

6-23-20

9-09-20

9-11-20

9-15-20

SCALE

Not to Scale

FILE

2020/Starbucks/
Lees Summit MO/20-50278/
SB Lees Summit MO 20-50278

DESIGN SPECIFICATIONS ACCEPTED BY:

EST:	CLIENT:
SLS/PM:	LANDLORD:

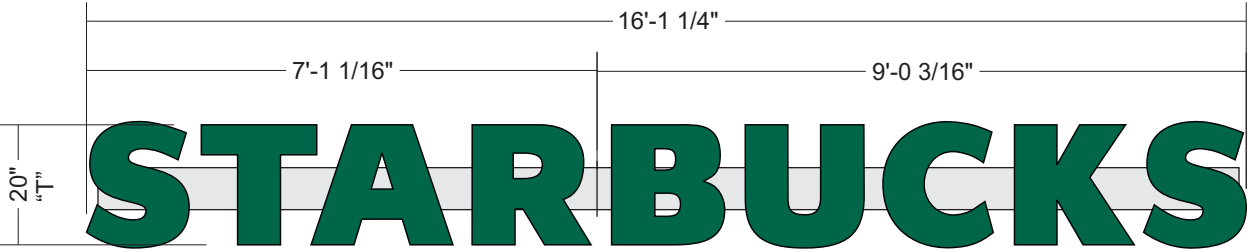
THE INTENT OF THIS DRAWING IS TO SHOW A CONCEPTUAL REPRESENTATION OF THE PROPOSED SIGNAGE. DUE TO VARIATIONS IN PRINTING DEVICES AND SUBSTRATES, THE FINISHED PRODUCT MAY DIFFER SLIGHTLY FROM DRAWING.



20” CHANNEL LETTERS - 2x7 RACEWAY

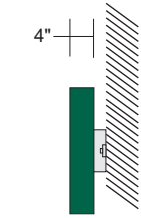
SBC-SDS-RW27-20-G

QTY. 1



1 Front View
Scale: 3/8" = 1'-0" (11x17)

26.84 SF



2 Side View

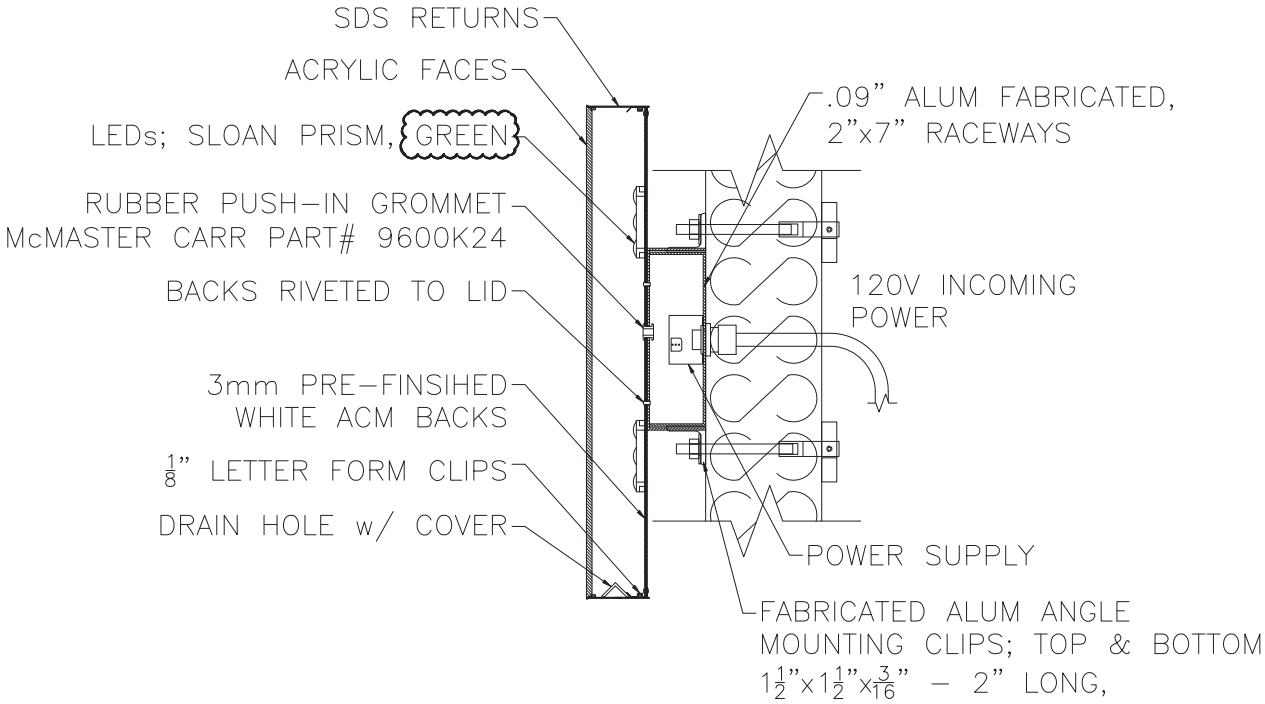


SPECIFICATIONS:

- 4" deep returns painted Starbucks Green
- Trimless plastic face with translucent vinyl
- Illuminated with Sloan LEDs

NOTE:

- Exterior letters will have drain holes and screws in the returns



COLOR LEGEND		
	PMS/PAINT	VINYL
	PMS 3425 C	3M 3630-76
	RAL 7021M	3M 3630-22
	PMS WHITE	3M 3630-20/ 7725-10 TRANSLUCENT OPAQUE
	PMS 369 C	NA
	REFL. WHITE	3M 680-10

HILTONDISPLAYS

125 HILLSIDE DRIVE • GREENVILLE SC 29607

P 800 353 9132 • F 864 242 2204

www.hiltondisplays.com

QID 20-50278

JOB NAME

Starbucks 63039

LOCATION

Rt 291 & 150
150 SW M-150 Hwy
Lee's Summit MO

CUSTOMER CONTACT

SALESMAN / PM

Maddie Keller

DESIGNER

Glenn Miller

DWG. DATE

5-22-20

REV. DATE / REVISION

5-26-20

6-23-20

9-09-20

9-11-20

9-15-20

SCALE

Not to Scale

FILE

2020/Starbucks/
Lees Summit MO/20-50278/
SB Lees Summit MO 20-50278

DESIGN SPECIFICATIONS ACCEPTED BY:

EST:	CLIENT:
SLS/PM:	LANDLORD:

THE INTENT OF THIS DRAWING IS TO SHOW A CONCEPTUAL REPRESENTATION OF THE PROPOSED SIGNAGE. DUE TO VARIATIONS IN PRINTING DEVICES AND SUBSTRATES, THE FINISHED PRODUCT MAY DIFFER SLIGHTLY FROM DRAWING.

UL

Underwriters

Laboratories Inc.

DRY

DAMP

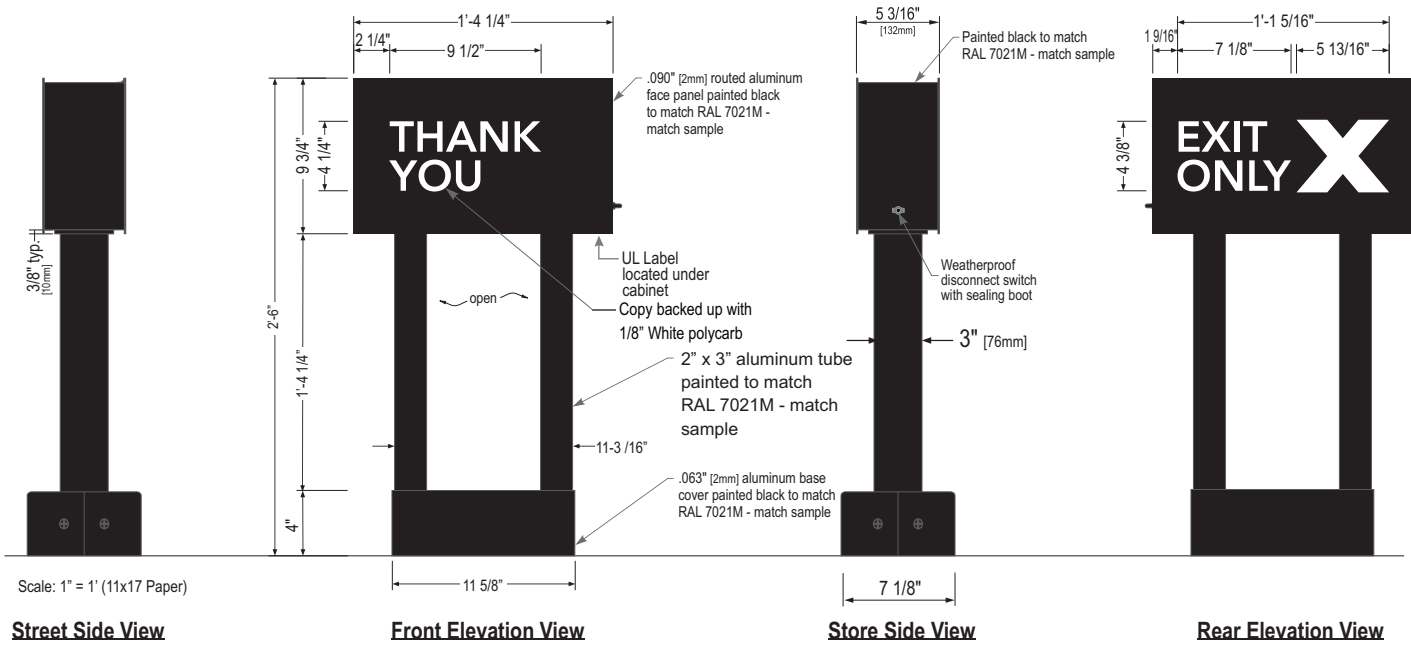
WET

X

30” ILLUMINATED DIRECTIONAL TY / EO

Qty. 1

SBC-AD3016-SL



Sign Specifications:

Fabricated .090" Aluminum cabinet painted black to match RAL 7021 as shown. Directional copy and graphic routed and backed up with 1/8" white polycarbonate. All polycarbonate face elements t beo attached to interior face panels with welded studs. All interior portions of sign cabinet painted white. Graphic elements illuminated with Sloan Prism Enlighten LEDs. LEDs mounted on internal baffle with self contained LED power supply. All components accessible through face of cabinet.

Support:

Support structure to be welded aluminum tube and plate construction painted black to match RAL 7021 Plate to be constructed to be retro-fittable to existing sign foundations. All foundations new and used to be analyzed for suitability and must meet all local city or state code regulations.

HILTONDISPLAYS

125 HILLSIDE DRIVE • GREENVILLE SC 29607
P 800 353 9132 • F 864 242 2204
www.hiltondisplays.com

QID 20-50278

JOB NAME

Starbucks 63039

LOCATION

Rt 291 & 150
150 SW M-150 Hwy
Lee's Summit MO

CUSTOMER CONTACT

SALESMAN / PM

Maddie Keller

DESIGNER

Glenn Miller

DWG. DATE

5-22-20

REV. DATE / REVISION

5-26-20

6-23-20

9-09-20

9-11-20

9-15-20

SCALE

Not to Scale

FILE

2020/Starbucks/
Lees Summit MO/20-50278/
SB Lees Summit MO 20-50278

DESIGN SPECIFICATIONS ACCEPTED BY:

EST:	CLIENT:
SLS/PM:	LANDLORD:

THE INTENT OF THIS DRAWING IS TO SHOW A CONCEPTUAL REPRESENTATION OF THE PROPOSED SIGNAGE. DUE TO VARIATIONS IN PRINTING DEVICES AND SUBSTRATES, THE FINISHED PRODUCT MAY DIFFER SLIGHTLY FROM DRAWING.



COLOR LEGEND		
	PMS/PAINT	VINYL
	PMS 3425 C	3M 3630-76
	RAL 7021M	3M 3630-22
	PMS WHITE	3M 3630-20/ 7725-10 TRANSLUCENT OPAQUE
	PMS 369 C	NA
	REFL. WHITE	3M 680-10

Qty. 1
(Standard Wind Load)

Mill seam on ALL steel tubing to be on the departure side of the clearance bar

(Standard Wind Load)

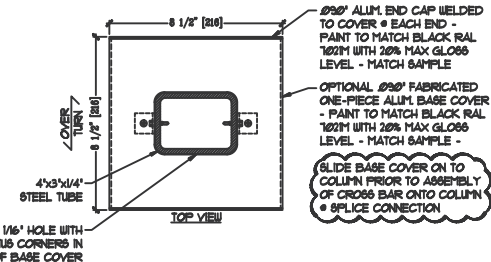
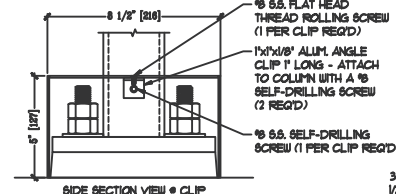
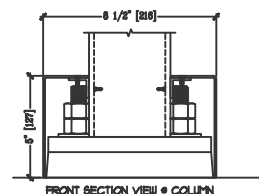
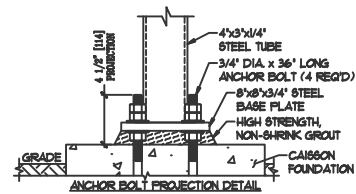


3/8" THICK STEEL MOUNTING TAB (4 REQ'D)

3/4" D.I.A. HOLE

1 1/2" [38]
3/4" [19]
3/4" [19]
1 1/2" [38]
3/8" [10]

PLACARD MOUNTING TAB DETAIL



Scraper Bar:

- Support:

- ~~HILTON~~DISPLAYS**
125 HILLSIDE DRIVE • GREENVILLE SC 29607
P 800 353 9132 • F 864 242 2204
www.hiltondisplays.com

JOB NAME

LOCATION

CUSTOMER CONTACT

SALESMAN / PM

Maddie Keller

DESIGNER

Glenn Miller

DWG. DATE

5-22-20

REV. DATE / REVISION

5-26-20

6-23-20

9-09-20

9-11-20

9-15-20

SCALE

Not to Scale

FILE

2020/Starbucks/
Lees Summit MO/20-50278/
SB Lees Summit MO 20-50278

DESIGN SPECIFICATIONS ACCEPTED BY:

EST:	CLIENT:
------	---------

SLS/PM:	LANDLORD:
---------	-----------

THE INTENT OF THIS DRAWING IS TO SHOW A CONCEPTUAL REPRESENTATION OF THE PROPOSED SIGNAGE. DUE TO VARIATIONS IN PRINTING DEVICES AND SUBSTRATES, THE FINISHED PRODUCT MAY DIFFER SLIGHTLY FROM DRAWING.



TENANT PANELS

SBC-PART #

Qty. 2 (1 ea)

F

SURVEY REQUIRED



FRONT VIEWS

SCALE: NTS

SPECIFICATIONS:

- A Faces to be 3/16"(5mm) white acrylic.
- B Graphics of logo to be 1st surface 3M translucent Scotchcal vinyl. Black 3M 3630-22 and Holly Green #3630-76

COLOR LEGEND		
	PMS/PAINT	VINYL
	PMS 3425 C	3M 3630-76
	RAL 7021M	3M 3630-22
	PMS WHITE	3M 3630-20/ 7725-10 TRANSLUCENT OPAQUE
	PMS 369 C	NA
	REFL. WHITE	3M 680-10

TENANT
PANELS Qty. 2



HILTONDISPLAYS
125 HILLSIDE DRIVE • GREENVILLE SC 29607
P 800 353 9132 • F 864 242 2204
www.hiltondisplays.com

QID 20-50278

JOB NAME

Starbucks 63039

LOCATION

Rt 291 & 150
150 SW M-150 Hwy
Lee's Summit MO

CUSTOMER CONTACT

SALESMAN / PM

Maddie Keller

DESIGNER

Glenn Miller

DWG. DATE

5-22-20

REV. DATE / REVISION

5-26-20

6-23-20

9-09-20

9-11-20

9-15-20

SCALE

Not to Scale

FILE

2020/Starbucks/
Lees Summit MO/20-50278/
SB Lees Summit MO 20-50278

DESIGN SPECIFICATIONS ACCEPTED BY:

EST:	CLIENT:
SLS/PM:	LANDLORD:

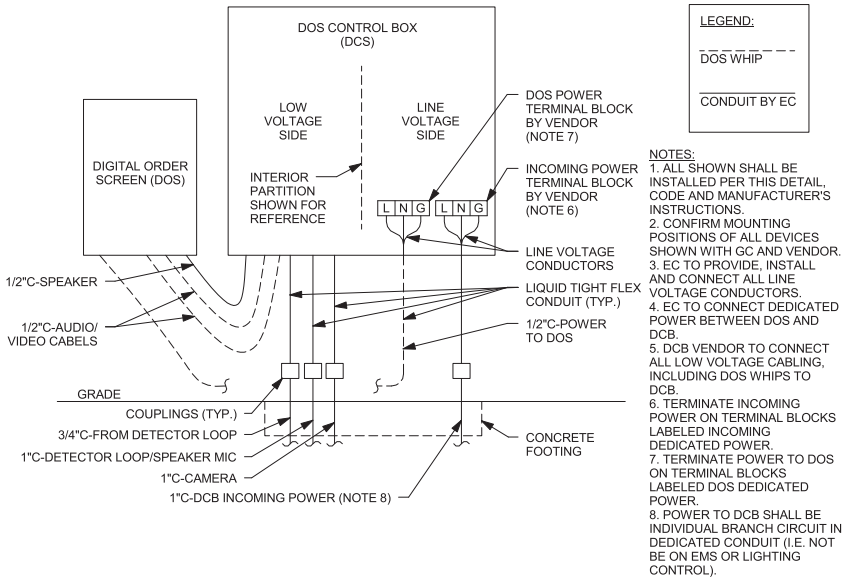
THE INTENT OF THIS DRAWING IS TO SHOW A CONCEPTUAL REPRESENTATION OF THE PROPOSED SIGNAGE. DUE TO VARIATIONS IN PRINTING DEVICES AND SUBSTRATES, THE FINISHED PRODUCT MAY DIFFER SLIGHTLY FROM DRAWING.



DOS ON CANOPY - DCB ON UNISTRUT

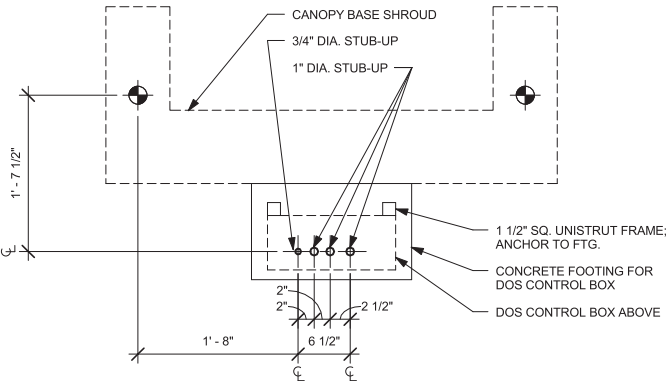
Qty. 1

G



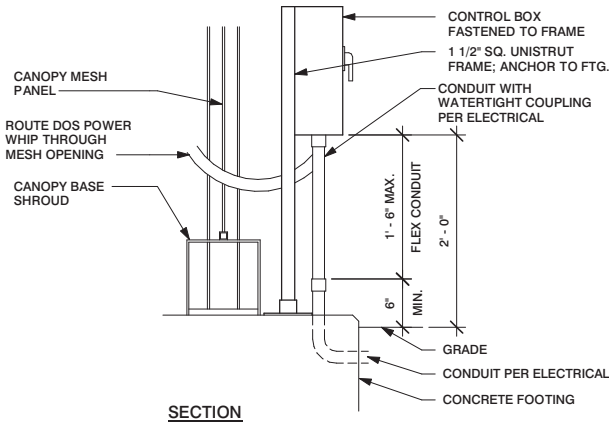
DTE - DOS CONTROL BOX WIRING

Scale: 1/2" = 1' (11x17 paper)



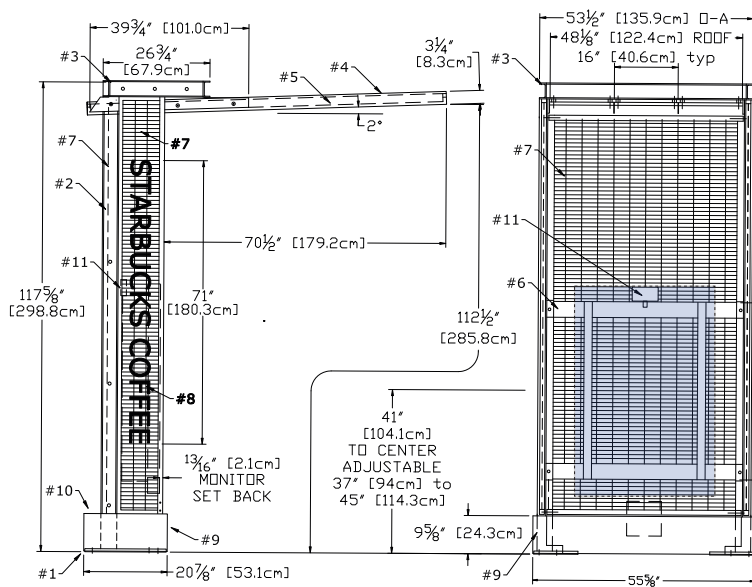
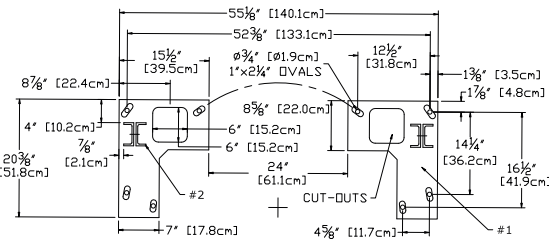
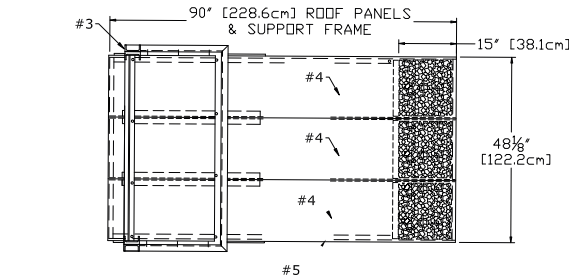
DTE - DOS CONTROL BOX CONDUIT STUB-UPS AT CANOPY

Scale: 1/2" = 1' (11x17 paper)



DTE - DOS CONTROL BOX AT CANOPY

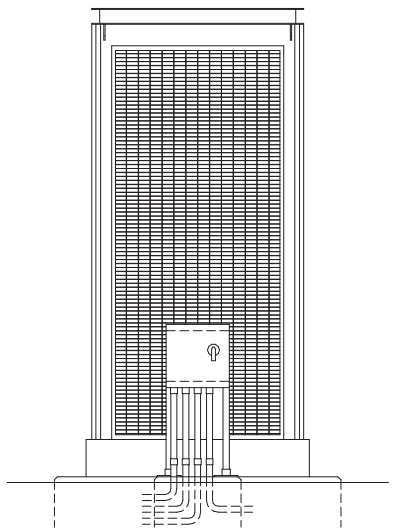
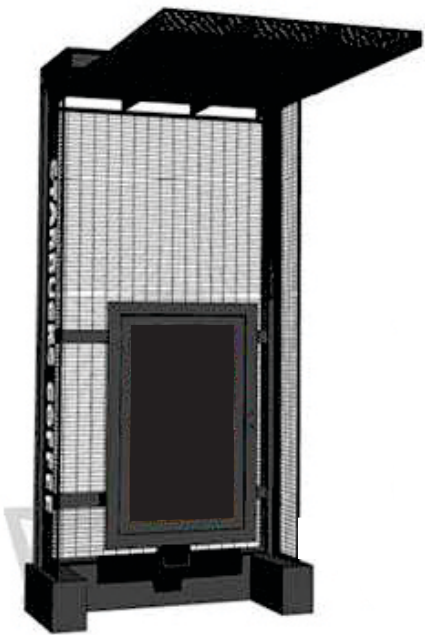
Scale: 1/2" = 1' (11x17 paper)



DTE - CANOPY

Scale: 1/4" = 1' (11x17 paper)

- #1 - TWO - 3/4" [19mm] STEEL BASE PLATES w/ OVAL HOLES FOR SWIVEL/POSITION 16 - 1/4" WASHERS SUPPLIED
- #2 - TWO - BACK TO BACK C4X7.25 (4"x1 3/4"x5 1/8") STEEL POSTS
- #3 - WELDED ALUMINUM HEADER, C4"x1.58" CHANNEL
- #4 - THREE - ALUMINUM ROOF PANELS SEAMLESS RAISED SIDE EDGES 15" OF LASERED PATTERN W/ DRIP EDGE BEHIND
- #5 - WELDED STEEL PERIMETER ROOF FRAME
- #6 - WELDED 3/16" STEEL [5mm] MONITOR SUPPORT FRAME WITH HGT ADJUSTMENT
- #7 - WELDED STEEL 1" [25.4mm] O-C WIRE GRID BACK & SIDE PANELS IN WELDED RECTANGULAR STEEL TUBE FRAMES
- #8 - 4' 1/2" X 1 1/2" [11.3cmX12.7mm] WHITE ACRYLIC LETTERS. FIXED TO LH GRID PANEL w/ANTI-TAMPER SCREWS
- #9 - WELDED ALUMINUM BASE COVERS
- #10 - WELDED ALUMINUM WATER-TIGHT ELECTRIC ENCLOSURE (REAR HATCH)
- #11 - LED CEILING FLOODLIGHT, WIRED COMPLETE



HILTONDISPLAYS

125 HILLSIDE DRIVE • GREENVILLE SC 29607
P 800 353 9132 • F 864 242 2204
www.hiltondisplays.com

QID 20-50278

JOB NAME

Starbucks 63039

LOCATION

Rt 291 & 150
150 SW M-150 Hwy
Lee's Summit MO

CUSTOMER CONTACT

SALESMAN / PM

Maddie Keller

DESIGNER

Glenn Miller

DWG. DATE

5-22-20

REV. DATE / REVISION

5-26-20

6-23-20

9-09-20

9-11-20

9-15-20

SCALE

Not to Scale

FILE

2020/Starbucks/
Lees Summit MO/20-50278/
SB Lees Summit MO 20-50278

DESIGN SPECIFICATIONS ACCEPTED BY:

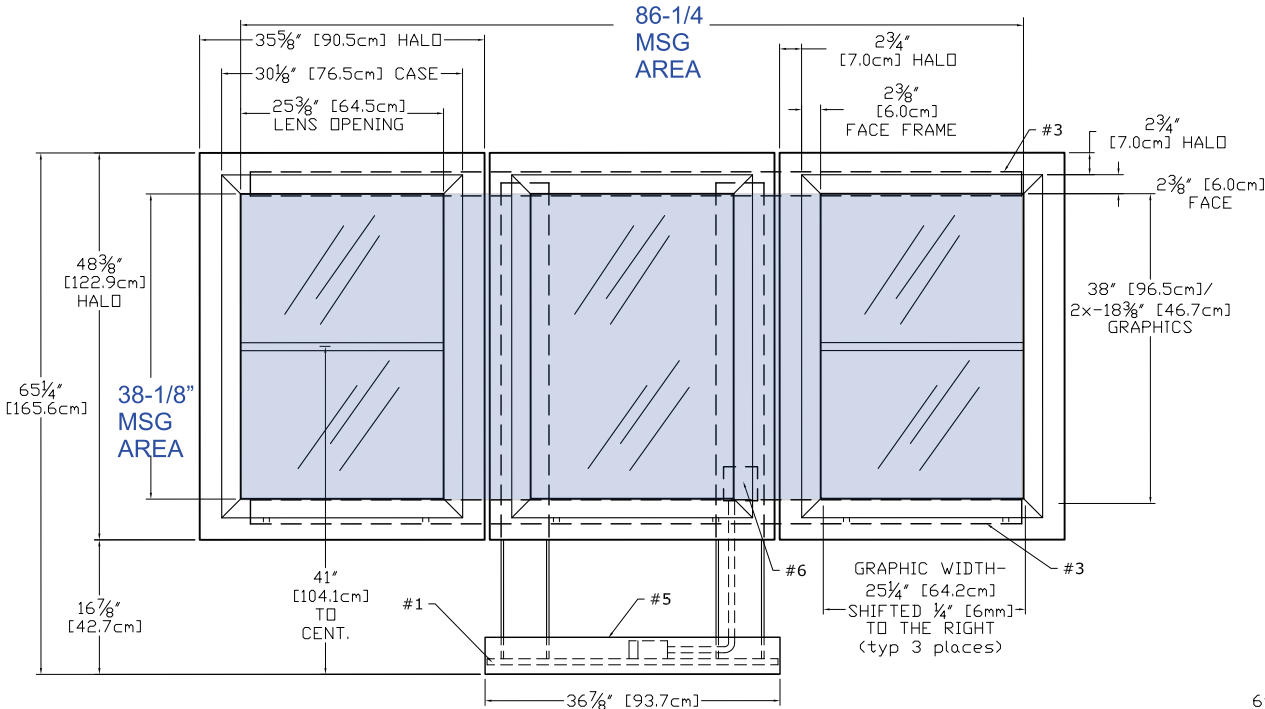
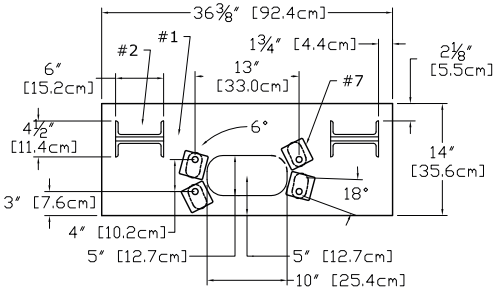
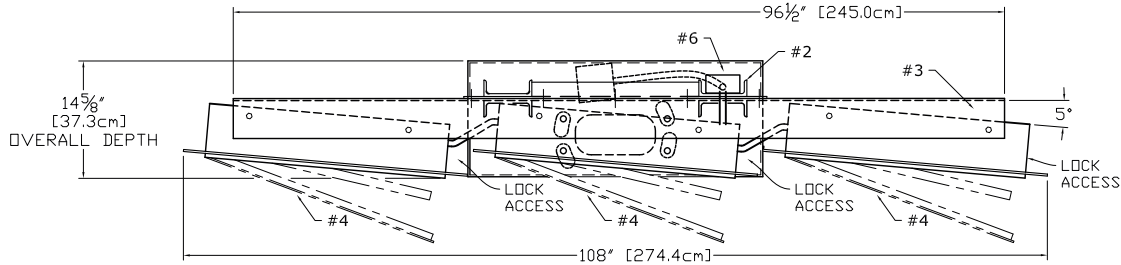
EST:	CLIENT:
SLS/PM:	LANDLORD:

THE INTENT OF THIS DRAWING IS TO SHOW A CONCEPTUAL REPRESENTATION OF THE PROPOSED SIGNAGE. DUE TO VARIATIONS IN PRINTING DEVICES AND SUBSTRATES, THE FINISHED PRODUCT MAY DIFFER SLIGHTLY FROM DRAWING.



5-PANEL MENU - FREESTANDING

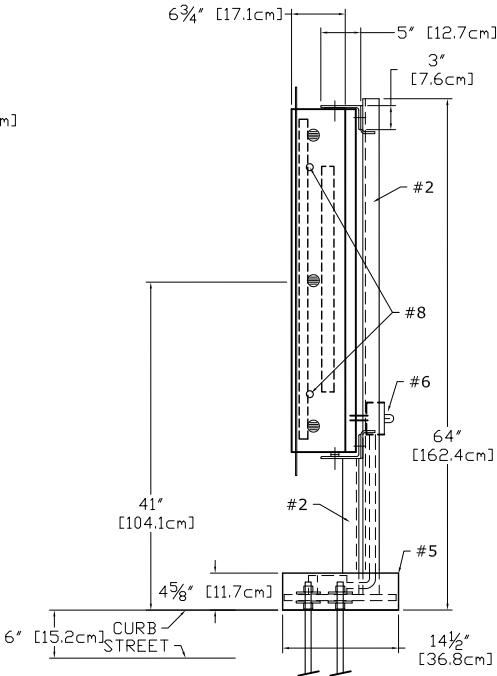
Qty. 1



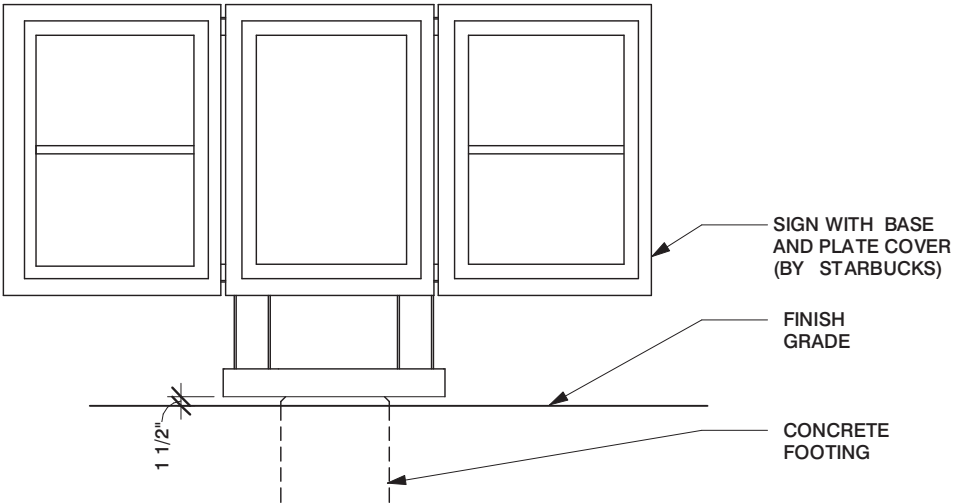
MESSAGE AREA = (86.25 * 38.125) / 144 = 22.9 SQ FT

DTE - MENU 5 PANEL FREESTANDING

Scale: 1/2" = 1' (11x17 paper)



- #1 - 3/4" [19mm] STEEL BASE PLATE w/ 18deg HOLES PATTERN ROTATED FOR 15deg THRU 3deg POSITION
- #2 - C6X10.5 (6"x2"x5 1/16") STEEL POST (2x)
- #3 - 5"x3"x1/4" STEEL SUPPORT ANGLES (2x) (BOLTED TO WELDED 1/4" STEEL CROSSBARS)
- #4 - EXTRUDED ALUMINUM MENU BOARDS (3x) ONE FULL AND TWO SPLIT PANEL LIGHTBOXES ONE - 25 1/4"x38" AND FOUR 25 1/4"x18 3/8" GRAPHICS ALL GRAPHIC ASSEMBLIES SHIFTED 1/4" TO RIGHT STANDARD LED TUBE LIGHTING, SIDE LOCKS
- #5 - WELDED ALUMINUM BASE COVER
- #6 - WATER-TIGHT BOX w/SWITCH & SENSOR, RIDGID CONDUIT RUN TO SECOND EXT BOX BELOW BASE COVER, 120 WATT, 0.90Aac
- #7 - 8 BASE WASHERS, 1/4" THICK
- #8 - TWO SIDE MOUNT LOCKS per MENUBOARD RETAIN EXISTING KEY #E3-26-819-15



DTE - MENU 5 PANEL FREESTANDING

Scale: 3/8" = 1' (11x17 paper)

HILTONDISPLAYS
125 HILLSIDE DRIVE • GREENVILLE SC 29607
P 800 353 9132 • F 864 242 2204
www.hiltondisplays.com

QID 20-50278

JOB NAME

Starbucks 63039

LOCATION

Rt 291 & 150
150 SW M-150 Hwy
Lee's Summit MO

CUSTOMER CONTACT

SALESMAN / PM

Maddie Keller

DESIGNER

Glenn Miller

DWG. DATE

5-22-20

REV. DATE / REVISION

5-26-20

6-23-20

9-09-20

9-11-20

9-15-20

SCALE

Not to Scale

FILE

2020/Starbucks/
Lees Summit MO/20-50278/
SB Lees Summit MO 20-50278

DESIGN SPECIFICATIONS ACCEPTED BY:

EST:	CLIENT:
SLS/PM:	LANDLORD:

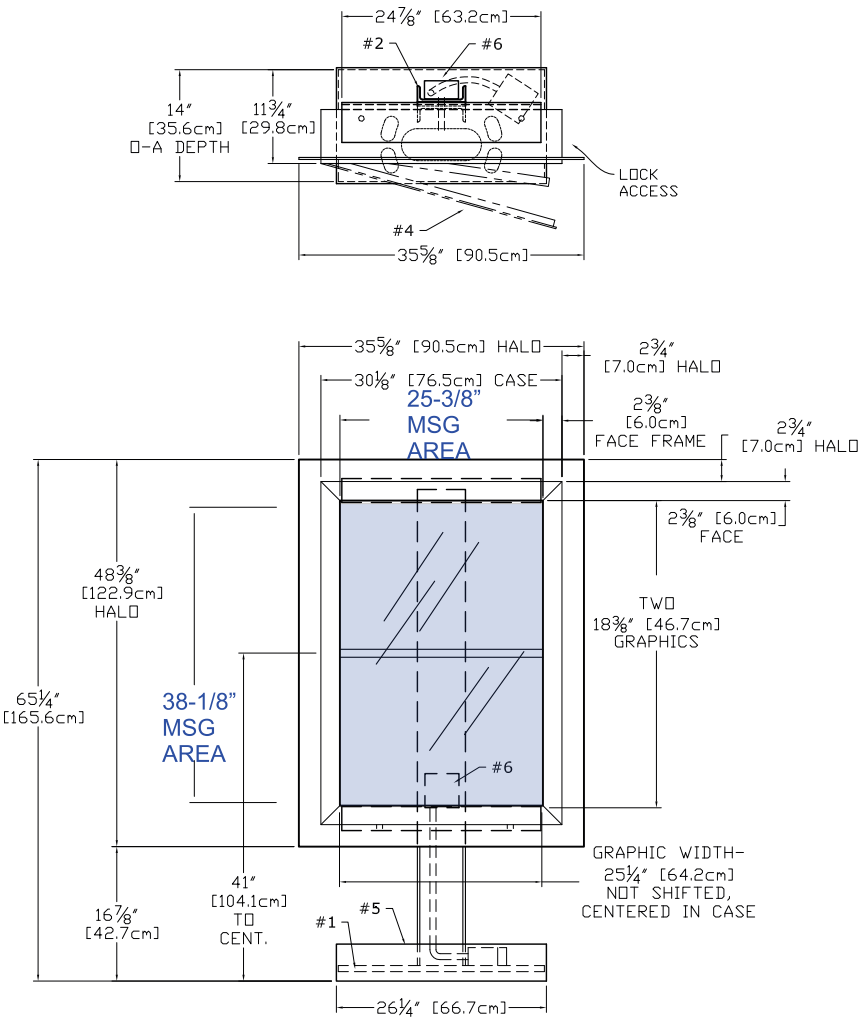
THE INTENT OF THIS DRAWING IS TO SHOW A CONCEPTUAL REPRESENTATION OF THE PROPOSED SIGNAGE. DUE TO VARIATIONS IN PRINTING DEVICES AND SUBSTRATES, THE FINISHED PRODUCT MAY DIFFER SLIGHTLY FROM DRAWING.



PRE-MENU BOARD - FREESTANDING

Qty. 1

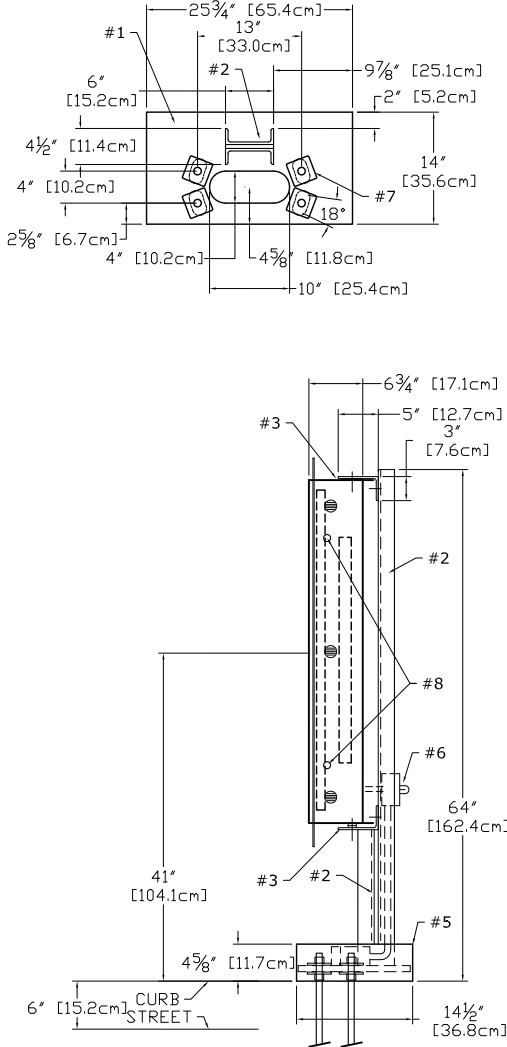
I



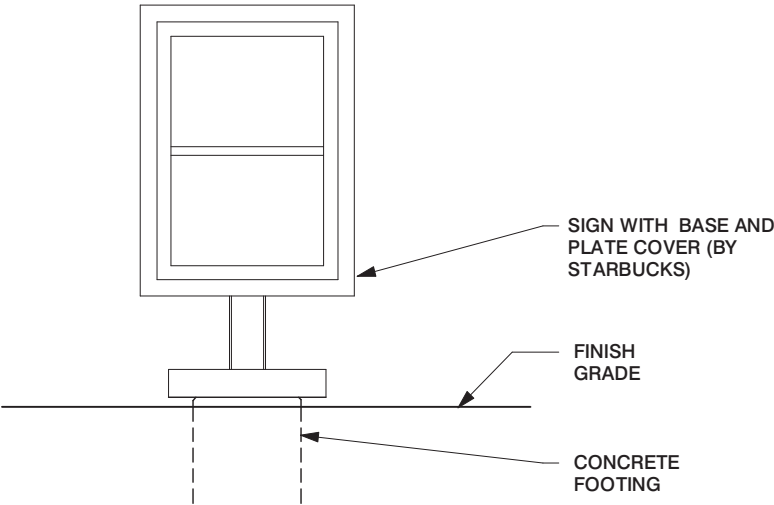
MESSAGE AREA = (25.375 * 38.125) / 144 = 6.72 SQ FT

DTE - PRE-MENU FREESTANDING

Scale: 1/2" = 1' (11x17 paper)



- #1 - 3/4" [19mm] STEEL BASE PLATE w/ 18deg HOLES PATTERN LEFT SQUARE / SYMETRICAL
- #2 - C6X10.5 (6"x2"x5/16") STEEL POST (1x)
- #3 - 5"x3"x1/4" STEEL SUPPORT ANGLES (2x) (WELDED TO STEEL POST)
- #4 - EXTRUDED ALUMINUM MENU BOARD (1x) ONE SPLIT PANEL LIGHTBOX TWO 25 1/4"x18 3/8" GRAPHICS GRAPHIC ASSEMBLY CENTERED, NOT SHIFTED STANDARD LED TUBE LIGHTING, SIDE LOCKS
- #5 - WELDED ALUMINUM BASE COVER
- #6 - WATER-TIGHT BOX w/SWITCHES & SENSOR, RIDGID CONDUIT RUN TO SECOND EXT BOX BELOW BASE COVER, 120 WATT, 0.30Aac
- #7 - 8 BASE WASHERS, 1/4" THICK
- #8 - TWO SIDE MOUNT LOCKS, RETAIN EXISTING KEY #E3-26-819-15



DTE - PRE-MENU FREESTANDING

Scale: 3/8" = 1' (11x17 paper)

HILTONDISPLAYS
125 HILLSIDE DRIVE • GREENVILLE SC 29607
P 800 353 9132 • F 864 242 2204
www.hiltondisplays.com

QID 20-50278

JOB NAME

Starbucks 63039

LOCATION

Rt 291 & 150
150 SW M-150 Hwy
Lee's Summit MO

CUSTOMER CONTACT

SALESMAN / PM

Maddie Keller

DESIGNER

Glenn Miller

DWG. DATE

5-22-20

REV. DATE / REVISION

5-26-20

6-23-20

9-09-20

9-11-20

9-15-20

SCALE

Not to Scale

FILE

2020/Starbucks/
Lees Summit MO/20-50278/
SB Lees Summit MO 20-50278

DESIGN SPECIFICATIONS ACCEPTED BY:

EST:	CLIENT:
SLS/PM:	LANDLORD:

THE INTENT OF THIS DRAWING IS TO SHOW A CONCEPTUAL REPRESENTATION OF THE PROPOSED SIGNAGE. DUE TO VARIATIONS IN PRINTING DEVICES AND SUBSTRATES, THE FINISHED PRODUCT MAY DIFFER SLIGHTLY FROM DRAWING.

