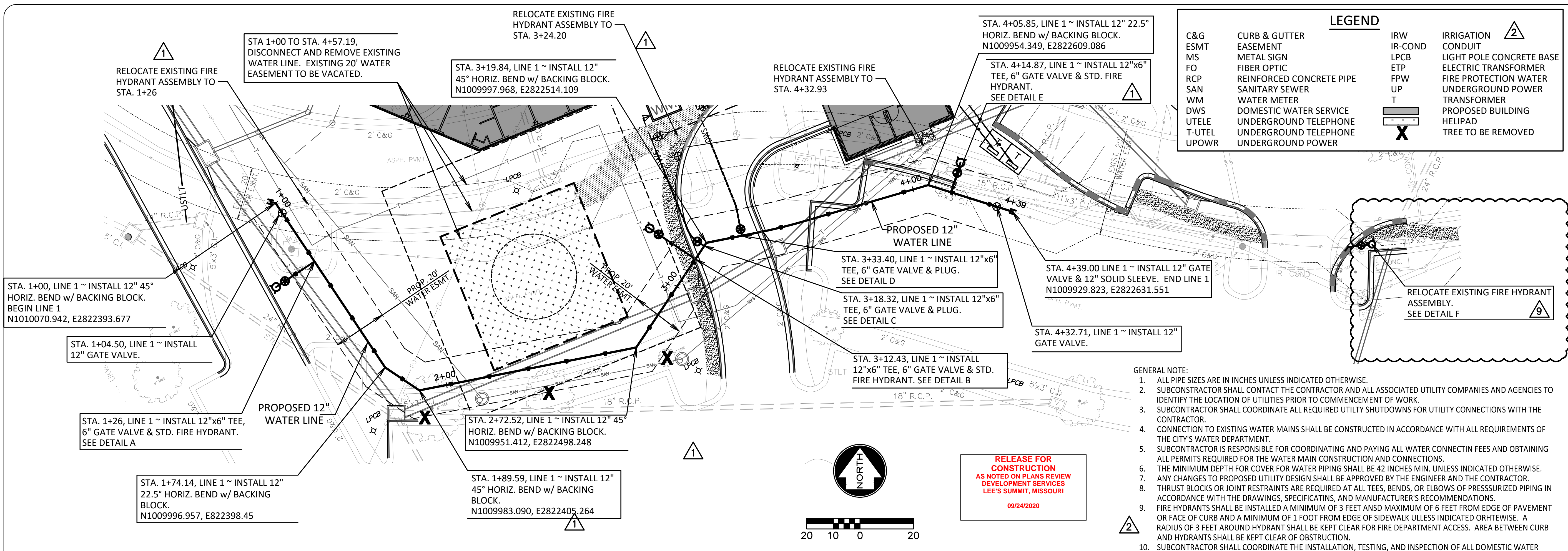


LEGEND	
C&G	CURB & GUTTER
ESMT	EASEMENT
MS	METAL SIGN
FO	FIBER OPTIC
RCP	REINFORCED CONCRETE PIPE
SAN	SANITARY SEWER
WM	WATER METER
DWS	DOMESTIC WATER SERVICE
UTELE	UNDERGROUND TELEPHONE
T-UTEL	UNDERGROUND TELEPHONE
UPOWR	UNDERGROUND POWER
IRW	IR-COND
LPCB	ETP
FPW	UP
T	T
X	X
IRRIGATION CONDUIT	IRRIGATION CONDUIT
LIGHT POLE CONCRETE BASE	LIGHT POLE CONCRETE BASE
ELECTRIC TRANSFORMER	ELECTRIC TRANSFORMER
FIRE PROTECTION WATER	FIRE PROTECTION WATER
UNDERGROUND POWER	UNDERGROUND POWER
TRANSFORMER	TRANSFORMER
PROPOSED BUILDING	PROPOSED BUILDING
HELIPAD	HELIPAD
TREE TO BE REMOVED	TREE TO BE REMOVED



NOTICE:
McClure Engineering Company waives any and all responsibility and liability for problems which arise from failure to follow these Plans, Specifications, and the engineering intent they convey, or for problems which arise from failure to obtain and/or follow the engineer's guidance with respect to any errors, omissions, inconsistencies, ambiguities, or conflicts which are alleged.

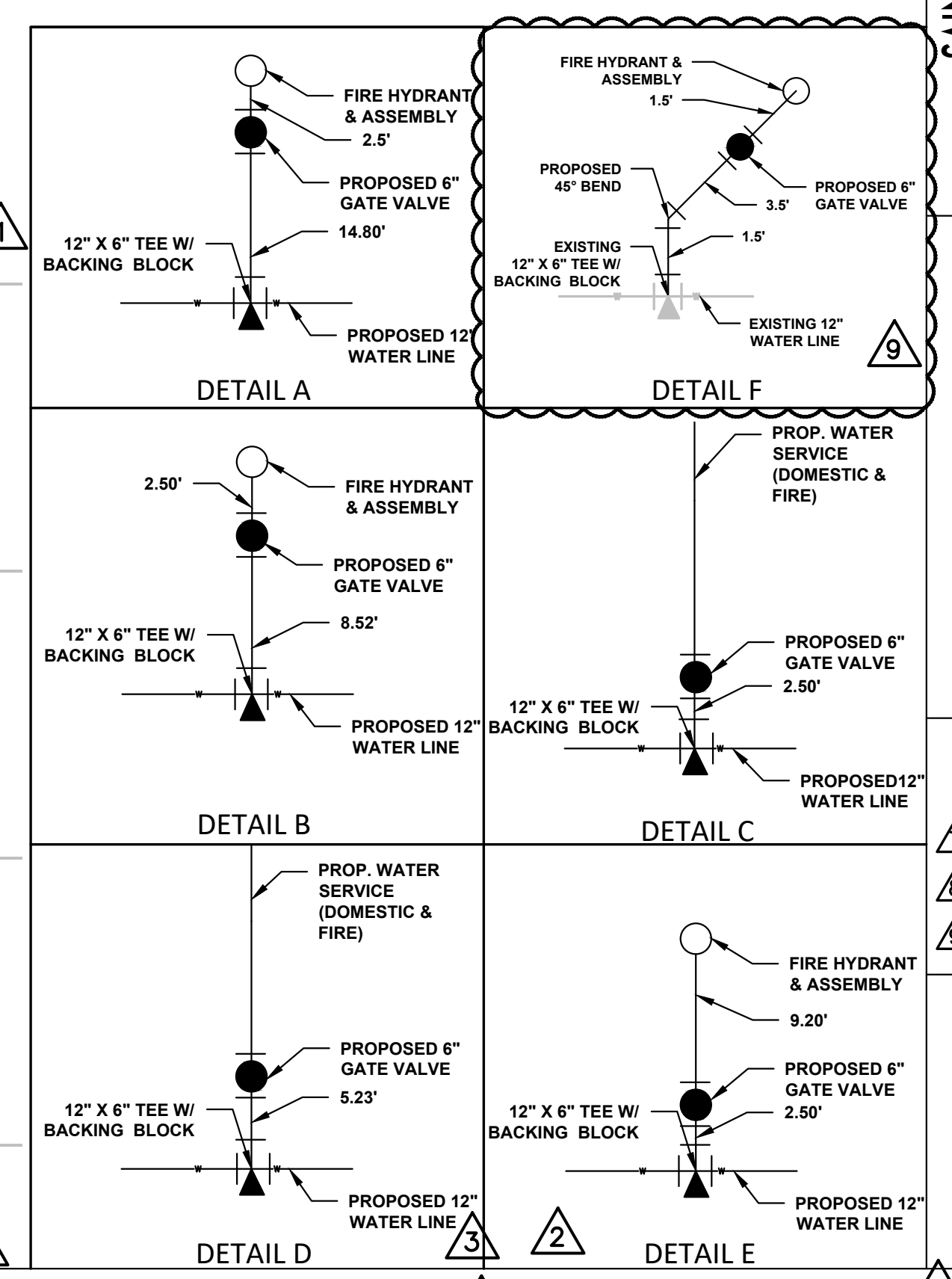
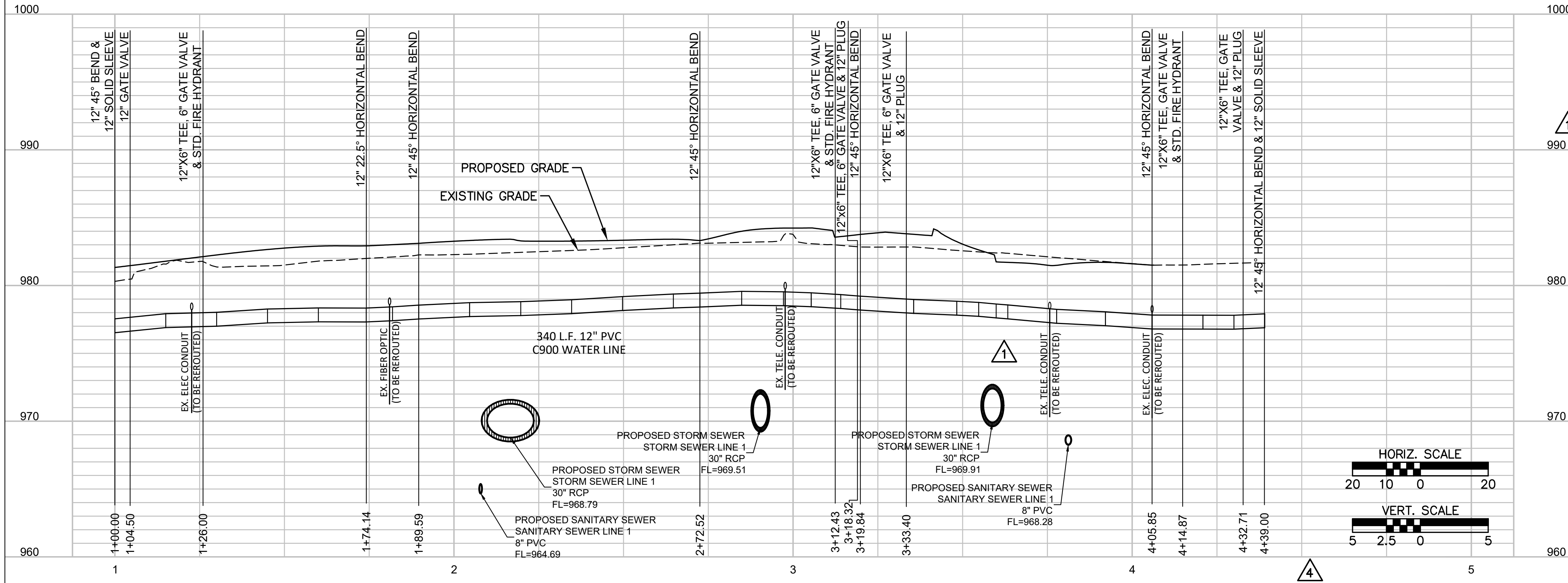
COPYRIGHT:
Copyright and property rights in these documents are expressly reserved by McClure Engineering Company. No reproductions, changes, or copies in any manner shall be made without obtaining prior written consent from McClure Engineering Company.

- GENERAL NOTE:**
1. ALL PIPE SIZES ARE IN INCHES UNLESS INDICATED OTHERWISE.
 2. SUBCONTRACTOR SHALL CONTACT THE CONTRACTOR AND ALL ASSOCIATED UTILITY COMPANIES AND AGENCIES TO IDENTIFY THE LOCATION OF UTILITIES PRIOR TO COMMENCEMENT OF WORK.
 3. SUBCONTRACTOR SHALL COORDINATE ALL REQUIRED UTILITY SHUTDOWNS FOR UTILITY CONNECTIONS WITH THE CONTRACTOR.
 4. CONNECTION TO EXISTING WATER MAINS SHALL BE CONSTRUCTED IN ACCORDANCE WITH ALL REQUIREMENTS OF THE CITY'S WATER DEPARTMENT.
 5. SUBCONTRACTOR IS RESPONSIBLE FOR COORDINATING AND PAYING ALL WATER CONNECTION FEES AND OBTAINING ALL PERMITS REQUIRED FOR THE WATER MAIN CONSTRUCTION AND CONNECTIONS.
 6. THE MINIMUM DEPTH FOR COVER FOR WATER PIPING SHALL BE 42 INCHES MIN. UNLESS INDICATED OTHERWISE.
 7. ANY CHANGES TO PROPOSED UTILITY DESIGN SHALL BE APPROVED BY THE ENGINEER AND THE CONTRACTOR.
 8. THRUST BLOCKS OR JOINT RESTRAINTS ARE REQUIRED AT ALL TEES, BENDS, OR ELBOWS OF PRESSURIZED PIPING IN ACCORDANCE WITH THE DRAWINGS, SPECIFICATIONS, AND MANUFACTURER'S RECOMMENDATIONS.
 9. FIRE HYDRANTS SHALL BE INSTALLED A MINIMUM OF 3 FEET AND MAXIMUM OF 6 FEET FROM EDGE OF PAVEMENT OR FACE OF CURB AND A MINIMUM OF 1 FOOT FROM EDGE OF SIDEWALK UNLESS INDICATED OTHERWISE. A RADIUS OF 3 FEET AROUND HYDRANT SHALL BE KEPT CLEAR FOR FIRE DEPARTMENT ACCESS. AREA BETWEEN CURB AND HYDRANTS SHALL BE KEPT CLEAR OF OBSTRUCTION.
 10. SUBCONTRACTOR SHALL COORDINATE THE INSTALLATION, TESTING, AND INSPECTION OF ALL DOMESTIC WATER AND FIRE WATER SYSTEMS WITH CITY'S WATER DEPARTMENT. SEE SPECIFICATIONS FOR ADDITIONAL REQUIREMENTS ON WATER MAIN TESTING AND INSPECTIONS.
 11. NEW 8" PVC WATER PIPE SHALL BE C900 AWWA POLYVINYL CHLORIDE PRESSURE PIPE.
 12. IN AREAS WHERE 18" OF COVER DOES NOT EXIST BETWEEN THE TOP OF PIPE AND EXISTING OR PROPOSED GRADE, COMPACTED FILL SHOULD BE PLACED TO A MINIMUM OF 18" ABOVE THE TOP OF PIPE PRIOR TO INSTALLATION.

3 NOTE:
"ALL CONSTRUCTION SHALL CONFORM TO THE SPECIFICATIONS SET FORTH BY THE KANSAS CITY CHAPTER OF THE AMERICAN PUBLIC WORKS ASSOCIATION AND THE CITY OF LEE'S SUMMIT, MISSOURI, WHICHEVER IS MORE STRICT."

RELEASE FOR CONSTRUCTION
AS NOTED ON PLANS REVIEW
DEVELOPMENT SERVICES
LEE'S SUMMIT, MISSOURI
09/24/2020

WATER LINE PROFILE



SAINT LUKE'S FLEX FACILITY EXPANSION PRIVATE SANITARY SEWER, PRIVATE STORM SEWER & PUBLIC WATER MAIN IMPROVEMENTS LEE'S SUMMIT, MISSOURI

WATER LINE PLAN & PROFILE

STATE OF MISSOURI
MATTHEW VAUGHN EBLEN
PE-200200598
PROFESSIONAL ENGINEER
MATTHEW VAUGHN EBLEN
PE-200200598
09/22/2020

ISSUE DATE
09-22-2020

REVISIONS

RFI	04-14-2020
City Comments #4	05-06-2020
RFI	09-22-2020

ENGINEER
MVE

DESIGNED BY
KLJ

DRAWN BY
KLJ

CHECKED BY
MVE

McCLURE PROJECT NO.
190891-000

SHEET NO.
C401