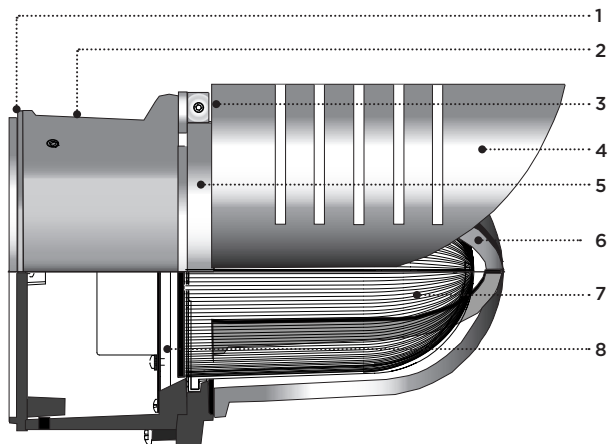


TYPE: _____ QUANTITY: _____ PROJECT: _____

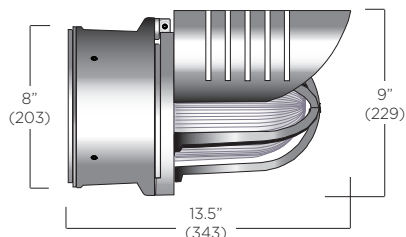
CATALOG NUMBER:

FIXTURE WATTAGE VOLTAGE FINISH OPTION OPTION OPTION OPTION



- 1- Sealed cast aluminum wall mounting plate.
- 2- Cast aluminum driver housing.
- 3- Housing/diffuser assembly hinge mechanism.
- 4- One piece aluminum hood with illuminated slots.
- 5- Cast aluminum swing out diffuser ring.
- 6- One piece cast aluminum star cage.
- 7- Borosilicate thermal shock resistant prismatic heavy glass frosted diffuser.
- 8- Twist lock removable driver tray.

SR528



MATERIALS

Scirocco is made of corrosion resistant 356 aluminum alloy with a copper (CU) content of less than 0.1%. The cast aluminum housing is designed with a hinge mechanism allowing a quick access for lamp replacement. The cast aluminum wall housing is sealed to prevent external dust and humidity from penetrating. The optical assembly includes a sealed borosilicate thermal shock resistant frosted prismatic glass diffuser secured with a silicone memory retention gasket.

ELECTRICAL

LED

DRIVER Standard driver is 0-10V dimming-ready (dims to 10%) with: 120-277 multi-volt compatibility (50-60Hz), operating temperature range of -30°C/-22°F to 60°C/140°F, output over voltage protection, output over current protection and output short circuit protection with auto-recovery.

LED Standard 4000K LED platform included. Optional 3000K and 3500K. Removable modular LED platform.

LIFE

51,000hrs $L_{70}B_{50}$ (based on IESNA TM-21 Test Method and LM80 data).
68,000hrs $L_{70}B_{50}$ (calculated projection from LM80 data).

FINISH

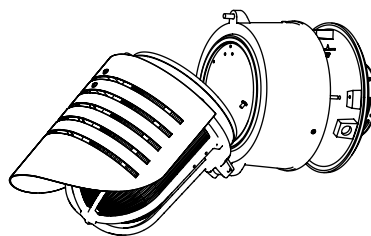
Five-stage preparation process including preheating of cast aluminum parts for air pocket extraction, and an environmentally friendly alloy sealant. Polyester powder coating is applied through an electrostatic process and oven cured for long term finish.

MOUNTING

Maximum weight: 11.6lbs (5.3kg)
Scirocco is designed to fit over a standard 4" (102) octagonal wall recessed box with 3 1/2" (89) C/C mounting holes.

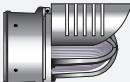
CERTIFICATION

Tested to UL1598 and CSA 22.2 #250. ETL listed wet location.
Photometry tested per IES LM-79-08 / IES LM80 test report at 25°C.
Rated IP65.



Scirocco is designed for ease of access to electrical and lighting compartment with a unique hinge mechanism concept.

LUMINAIRE SELECTION

MODEL#	LED LIGHT SELECTION					VOLTAGE ¹	FINISH
 <input type="checkbox"/> SR528	SUFFIX	INPUT WATTS	DELIVERED LUMENS	CRI	CCT °K	<input type="checkbox"/> 120V <input type="checkbox"/> 277V Optional <input type="checkbox"/> 347V <input type="checkbox"/> 480V	STANDARD COLORS
	<input type="checkbox"/> L1W12 <input type="checkbox"/> L1W18 <input type="checkbox"/> L1W30	12W 18W 30W	550 835 1400	80	4000K		<input type="checkbox"/> WHT Snow white <input type="checkbox"/> BKT Jet black <input type="checkbox"/> BZT Bronze <input type="checkbox"/> MST Matte silver <input type="checkbox"/> GRT Titanium gray <input type="checkbox"/> DGT Gun metal <input type="checkbox"/> CHT Champagne
							OPTIONAL COLORS
							<input type="checkbox"/> CS Custom color <input type="checkbox"/> RAL RAL# color (Refer to color chart)

OPTIONS

ELECTRICAL

- ☐ FS Fuse
- ☐ PH Photocell
- ☐ 347L 347V input power driver
- Alternate CCT °K LED
- ☐ K3 3000K CCT LED
- ☐ K35 3500K CCT LED

ACCESSORIES

- ☐ FH Fully closed diffuser hood



NOTES

- 1- Luminaires are factory prewired for 120V (if no voltage is specified.) For other voltages, please specify with catalog number, or consult factory.