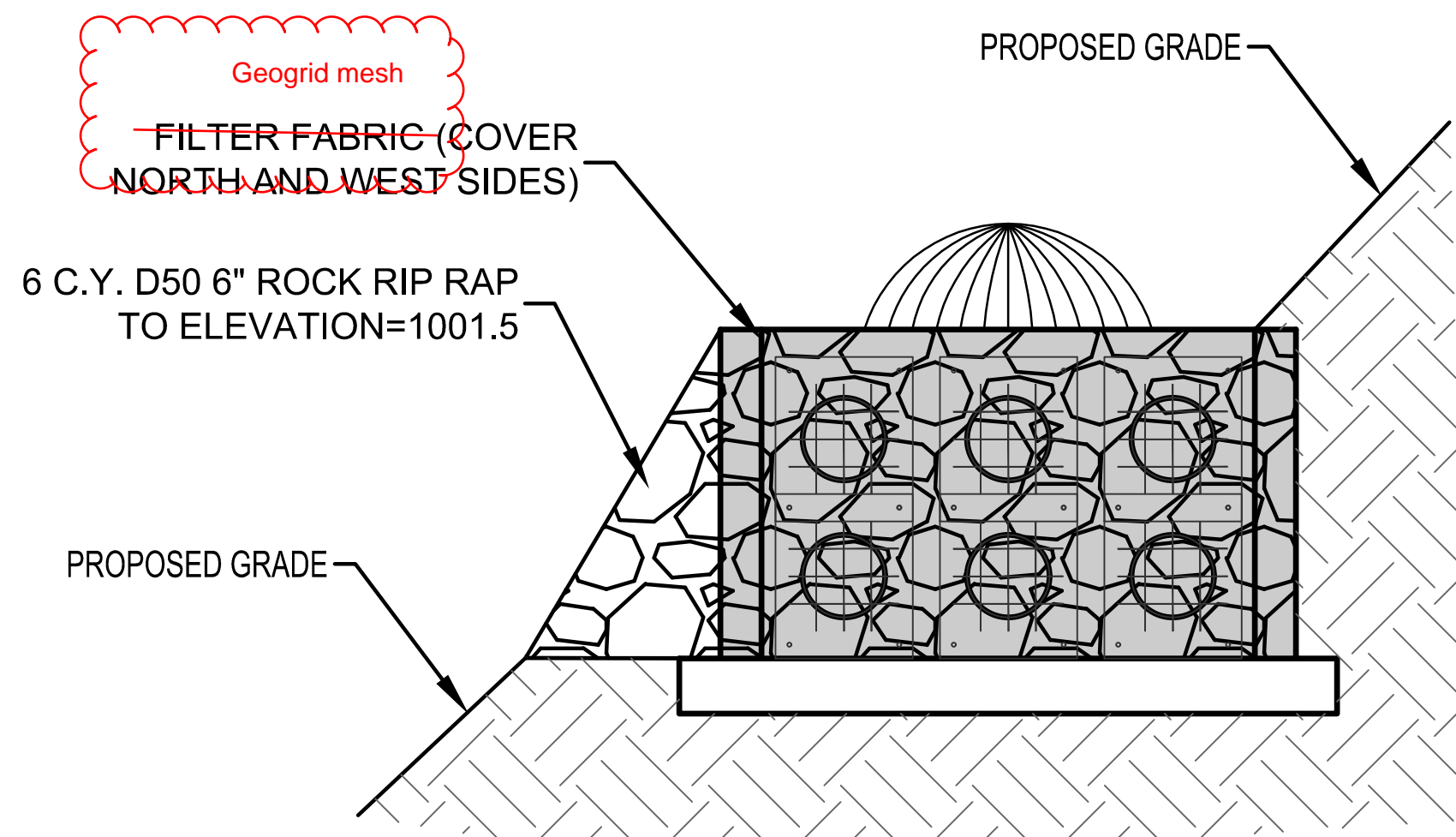
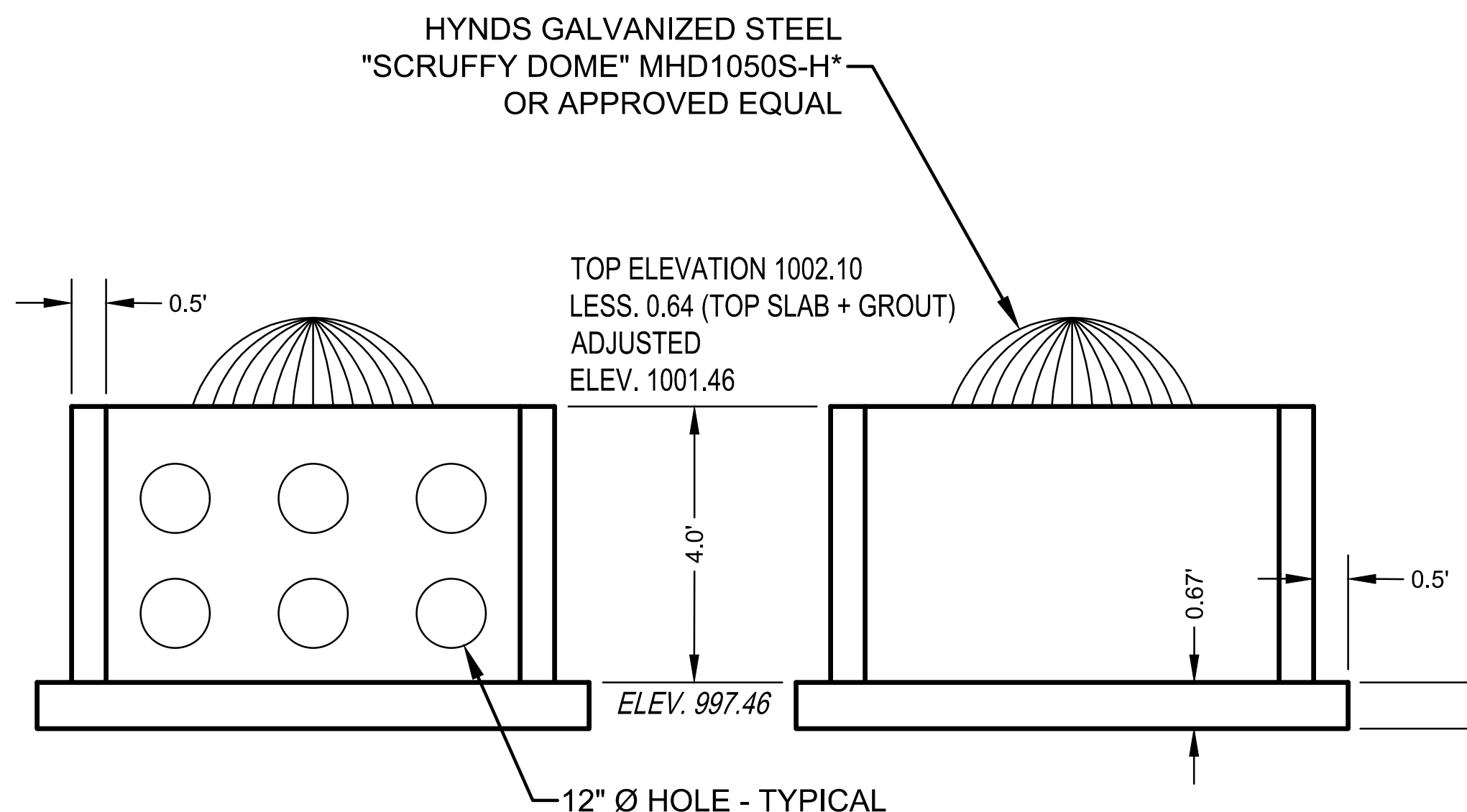


PLAN

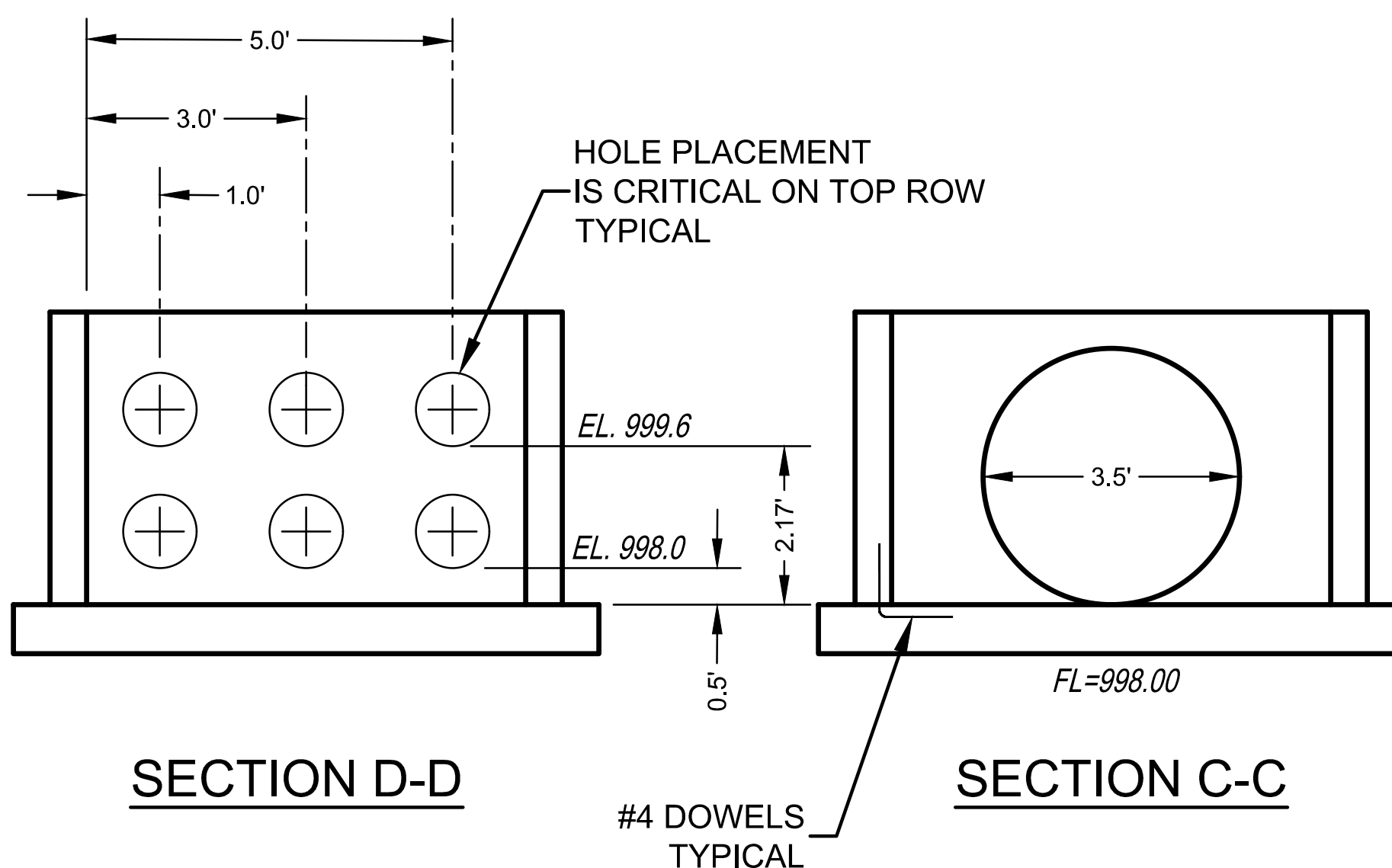


SIDE VIEW FACING WEST SIDE



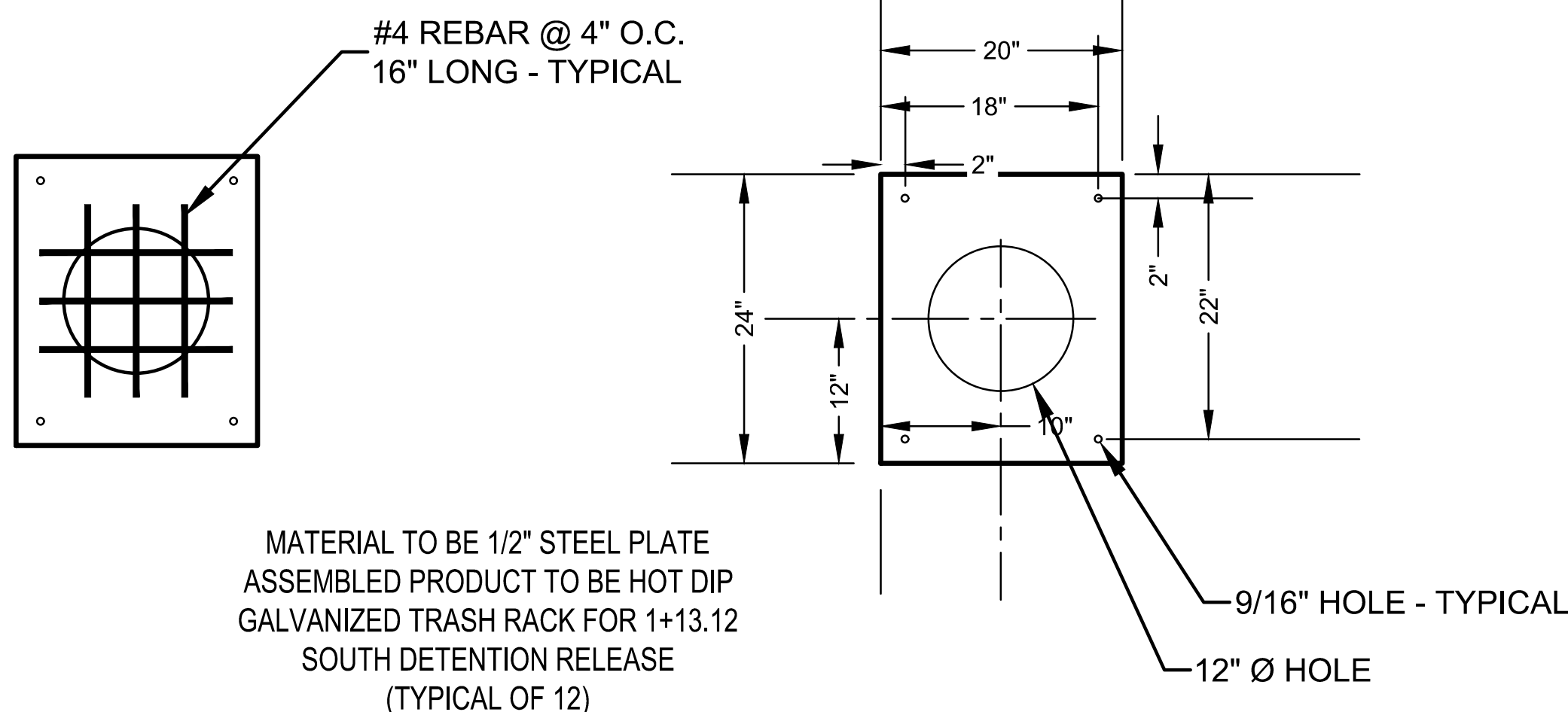
SECTION A-A

SECTION B-B



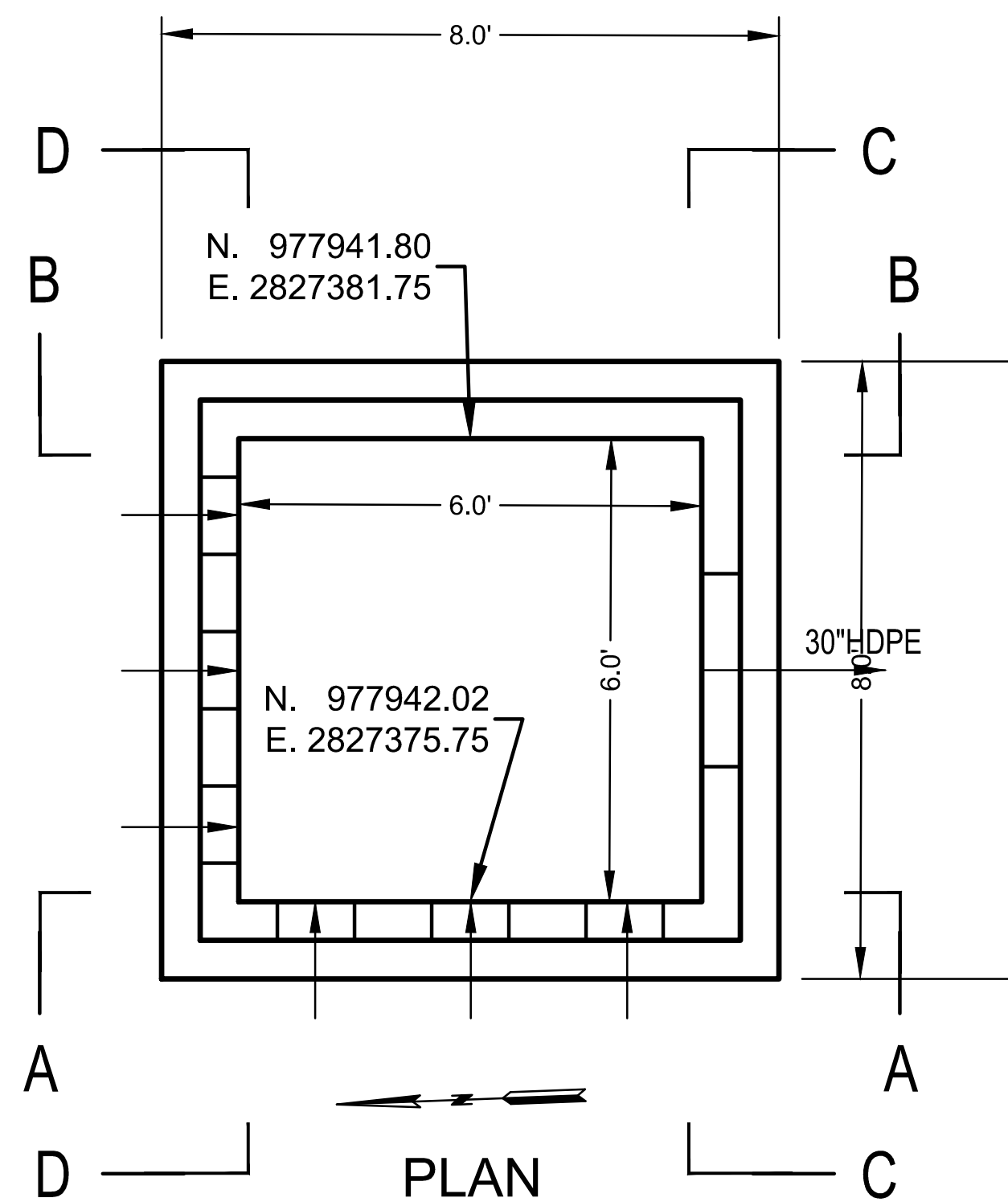
SECTION D-D

SECTION C-C

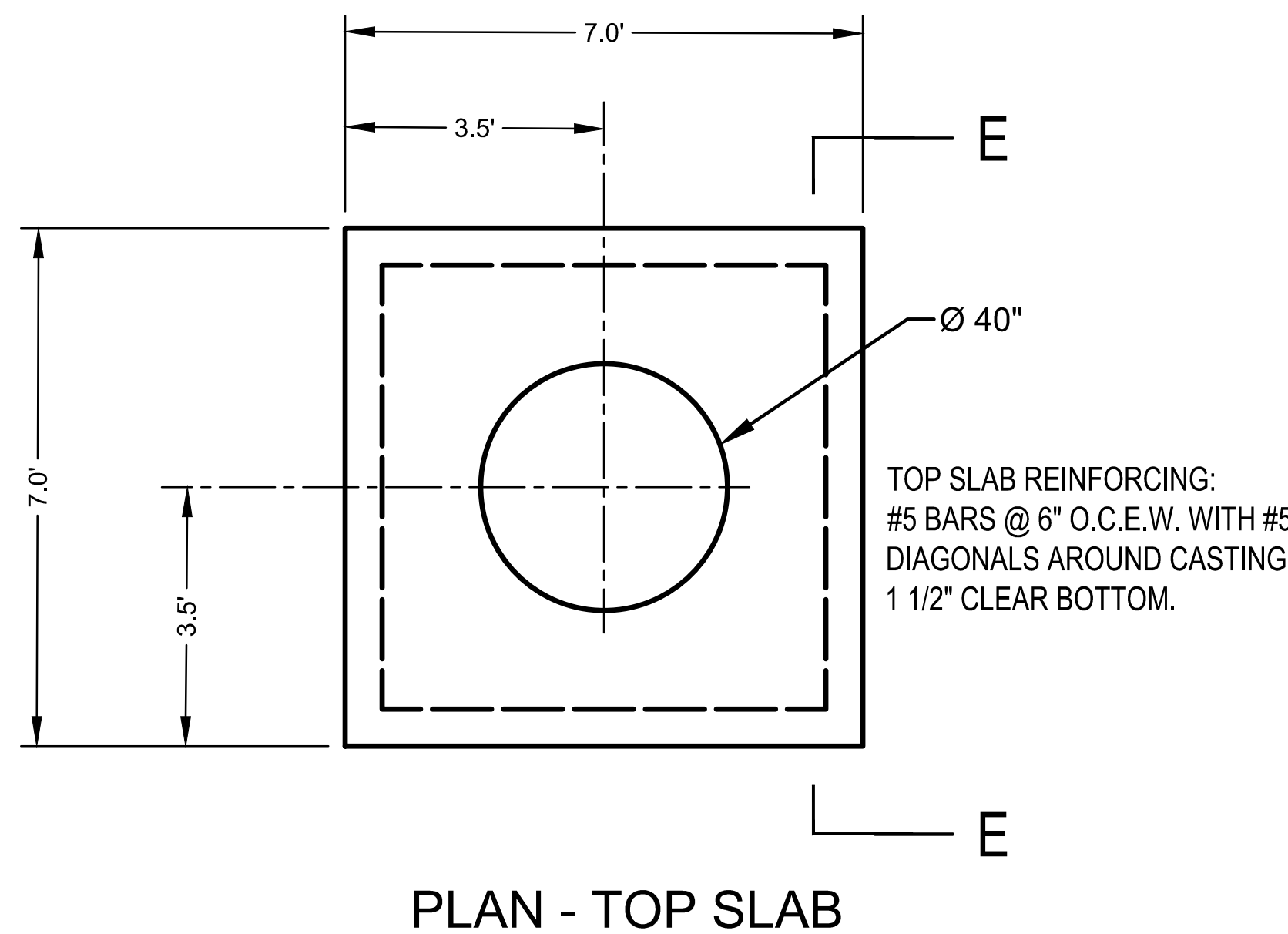


MATERIAL TO BE 1/2" STEEL PLATE ASSEMBLED PRODUCT TO BE HOT DIP GALVANIZED TRASH RACK FOR 1+13.12 SOUTH DETENTION RELEASE (TYPICAL OF 12)

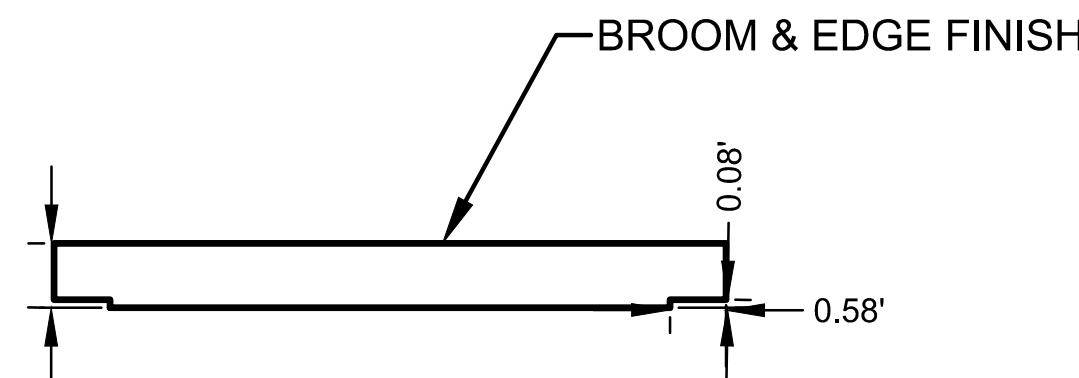
TRASH RACK



PLAN



PLAN - TOP SLAB



SECTION E-E

DETENTION OUTLET STRUCTURE

NOT TO SCALE

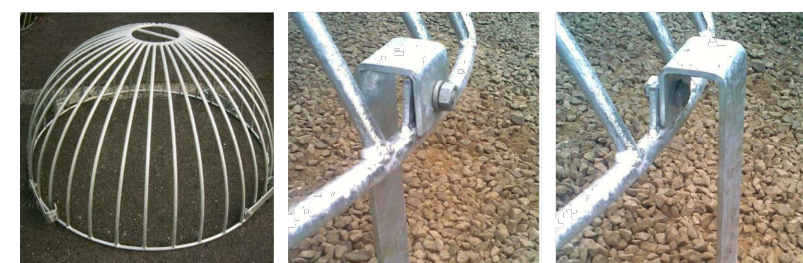
RELEASE FOR CONSTRUCTION AS NOTED ON PLANS REVIEW DEVELOPMENT SERVICES LEE'S SUMMIT, MISSOURI 08/06/2020

The scruffy dome is made of galvanised steel and is used in stormwater applications to provide a debris and security screen for manholes.

- Design Specifications**
- The type 1 debris screen is a full height design, suitable for manholes with a 600mm diameter or larger. (Refer to figure 1.)
 - The type 2 debris screen has a lower height profile making it less noticeable in areas such as parks and gardens. Suitable for manholes with a diameter of 600 mm or larger. (Refer to figure 2.)
- Installation**
- Dome brackets are bolted to the manhole riser with stainless steel bolts.
 - The bolts are purchased separately.

Note: The North Island and South Island have different versions of Scruffy Domes with slight changes in the anchor design (See photos below). Please contact your local Hynds branch for more information.

North Island Scruffy Dome



South Island Scruffy Dome



Product Code	Manhole Size	Type	Riser ID (mm)	A x OD of Grille (mm)	B x Diameter of Inner Ring (mm)	C x Height of Dome (mm)	D x Leg Length (mm)
Type 1 High Profile							
MH-D1050S	600	1	610	640	145	200	190
MH-D1050S	675	1	686	716	145	200	190
MH-D1050S	800	1	814	860	230	300	190
MH-D1050S	1050	1	1066	1126	230	490	190
MH-D1050S-H*	1050	1	1066	1126	230	690	190
MH-D1050S	1200	1	1207	1270	230	690	190
MH-D1050S	1400	1	1372	1430	230	715	190
MH-D1050S	1600	1	1624	1680	230	790	190
MH-D1050S	1800	1	1876	1940	230	870	190
MH-D1050S	1900	1	1929	1990	230	950	190
Type 2 Low Profile							
MH-D1050S	600	2	610	640	145	190	190
MH-D1050S	675	2	686	716	145	190	190
MH-D1050S	800	2	814	860	230	170	190
MH-D1050S	1050	2	1066	1126	230	200	190
MH-D1050S-HL*	1050	2	1066	1126	230	200	190
MH-D1050S	1200	2	1207	1270	230	240	190
MH-D1050S-HL*	1200	2	1207	1270	230	240	190
MH-D1050S	1400	2	1372	1430	230	260	190
MH-D1050S	1600	2	1624	1680	230	420	190
MH-D1050S	1800	2	1876	1940	230	480	190
MH-D1050S	1900	2	1929	1990	230	520	190

Note: Larger sizes 2000, 2300, 2600, 3000mm are available on request.

*H - hinged lid - hinged and lockable

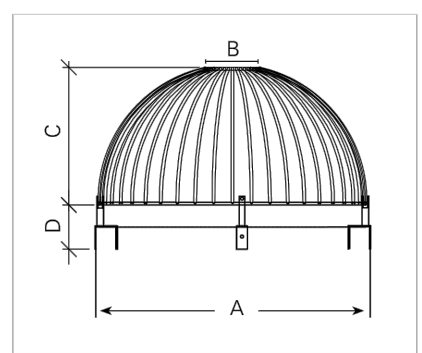


FIG. 1 Dimensions of Type 1 Hynds Scruffy Dome (see table).

Note: Brackets shown here are not supplied. Please see the North Island and South Island Scruffy Domes photos.

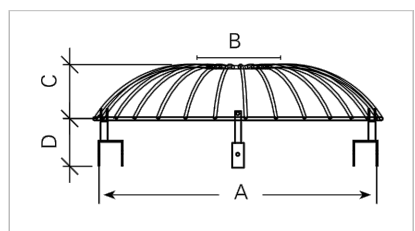
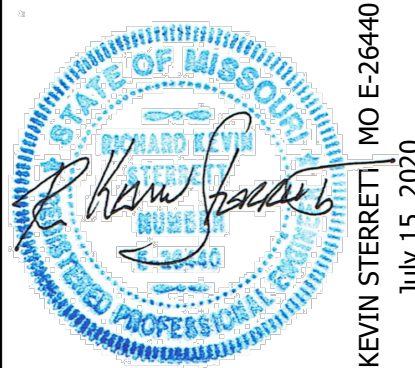


FIG. 2 Dimensions of Type 2 Hynds Scruffy Dome (see table).

Note: Brackets shown here are not supplied. Please see the North Island and South Island Scruffy Domes photos.

NO.	BY	CHKD	DATE	REVISION
6	SPW	SPW	07/20/19	PER CITY COMMENTS
5	SPW	SPW	07/20/19	PER CITY COMMENTS
4	SPW	SPW	04/23/19	PER CITY COMMENTS
3	SPW	SPW	04/16/19	PER CITY COMMENTS
2	SPW	SPW	03/27/19	PER CITY COMMENTS
1	SPW	SPW	03/06/19	PER CITY COMMENTS
			11/21/18	SUBMITTAL TO CITY OF LEE'S SUMMIT



Consult Inc engineers planners
11010 Haskell Street, Suite 210, Kansas City, Kansas 66109
CORPORATE LICENSE NO. E201000573 (MO.) / E-1736 (KS.)
JULY 15, 2020

STREET AND STORM SEWER PLANS
SOUTH DETENTION BASIN
OUTLET STRUCTURE
COBEY CREEK FIRST PLAT
PHASE I
CITY OF LEE'S SUMMIT, JACKSON COUNTY, MISSOURI

X-REF NO.
16-059 Base Phase I
DRAWING NO.
16-059 Phase I Street Plans
DATE
July 21, 2020
JOB NO.
16-059
43B SHEET OF 53