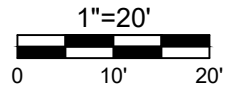


TEMPORARY CONSTRUCTION EASEMENT EXHIBIT

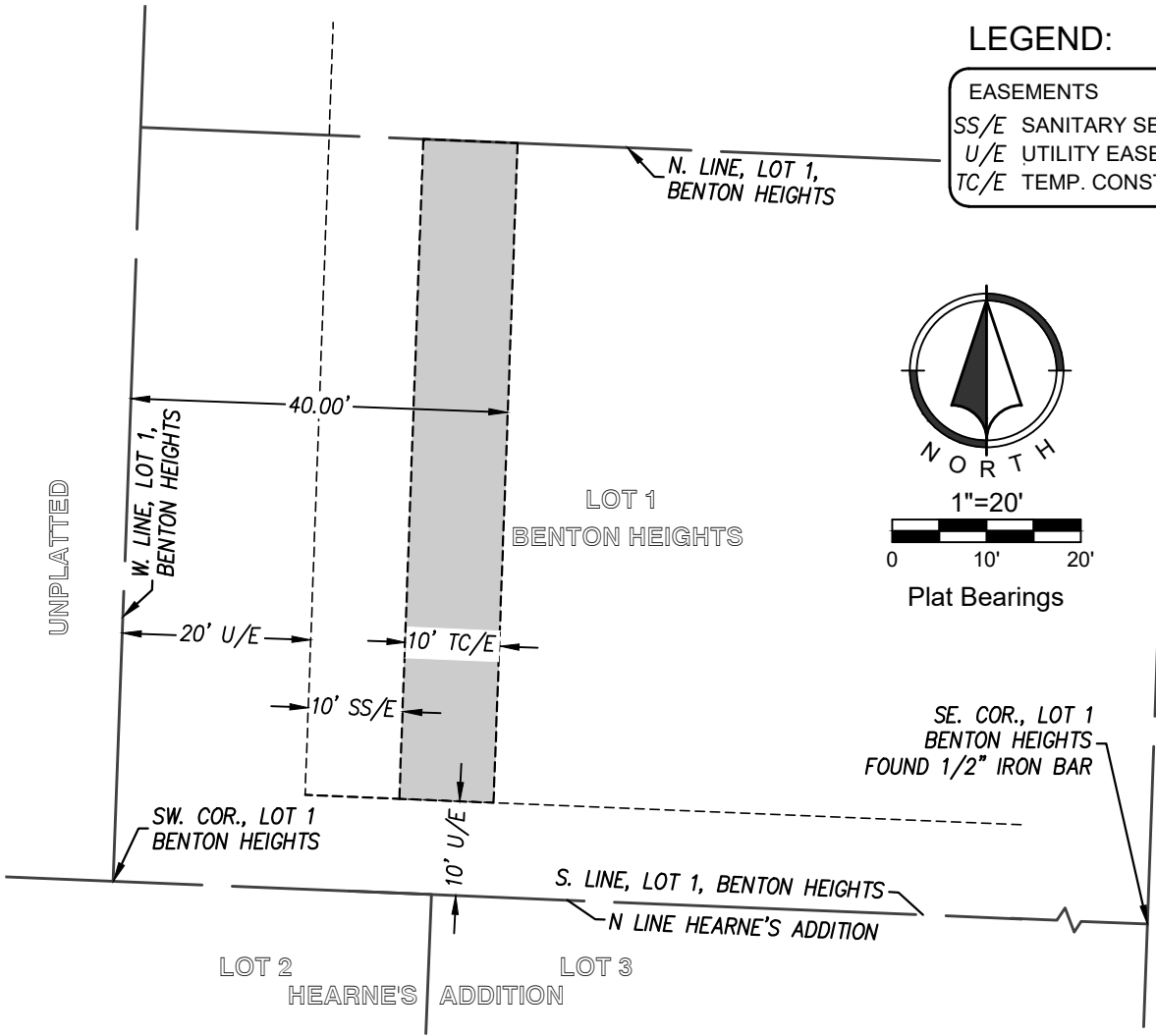
Exhibit A

LEGEND:

EASEMENTS	
SS/E	SANITARY SEWER EASEMENT
U/E	UTILITY EASEMENT
TC/E	TEMP. CONSTRUCTION ESMT.



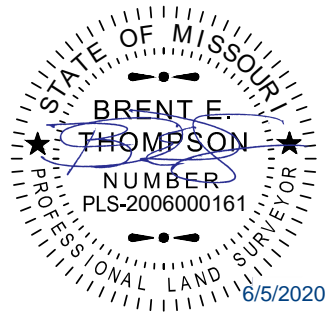
Plat Bearings



Description

A strip of land 10 feet in width, across part of of Lot 1, BENTON HEIGHTS, a subdivision in Lee's Summit, Jackson County, Missouri, described more particularly as follows:

The East 10.00' feet of the West 40.00' feet of said Lot 1, less that part lying in easement as platted, containing 699.94 square feet, or 0.016 acres, more or less.



132 Abbie Avenue  
Kansas City, Kansas 66103  
913.317.9500  
www.ric-consult.com