

FIREBIRDS®

WOOD FIRED GRILL

Sign Package Submittal

Firebirds - Lee's Summit, MO
920 NW Pryor Rd
Suite A
Lee's Summit, MO 64081

Originally submitted: January 17th, 2020

Latest revision: February 25th, 2020

PRESENTED BY:



199 Wilshire Ave. SW
Concord, NC 28025
www.cascosigns.com
Contact: Darin Martin
704-788-9055

Zoning Information

Wall Signs:

- Shall be fastened directly to the exterior wall of a building and extend from the surface of the wall no more than 12 inches.
- 6ft max letter height
- No raceways
- Blade signs maximum of 6 square feet
- 3 per building
- 10% of building façade

No white background for a cabinet that is internally illuminated

Freestanding Signs:

- 1 per building
- A minimum of 25 square feet of landscaped area, exclusive of the sign structure, shall be located at the base of each principal freestanding sign. The landscaping shall contain living landscape materials consisting of shrubs, and/or perennial ground cover plants spaced throughout the required landscape area.
- Each freestanding sign shall be located at least 75 feet from any other freestanding sign on the same side of the street. This distance may be reduced upon approval by the Director if it cannot be met due to the location of existing signs on separate but adjoining lots. This reduction shall be the minimum required to maintain the greatest separation possible from existing signs.
- 16 sq. ft. for ground or hanging.
- 72 sq. ft. sign face area and
- 96 sq. ft. structure area

Ground Signs :

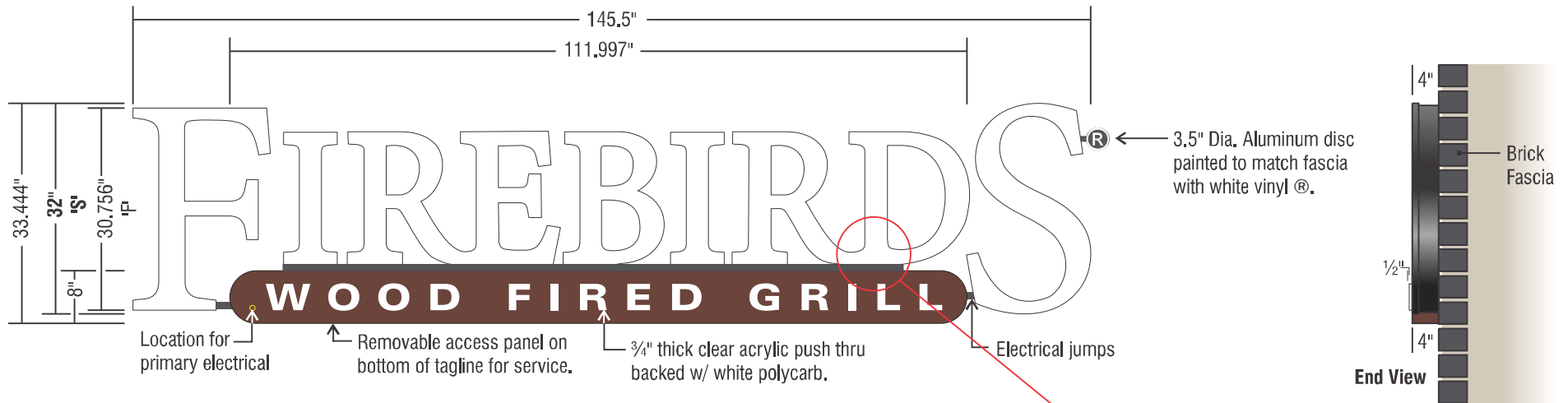
- The bottom of the sign face of a ground sign shall be no more than four feet above the ground.

Monument Signs:

- The sign base of a monument sign shall have a width of at least two-thirds of the width of the sign face or cabinet.
- The base shall have a masonry or concrete substructure with an exterior base consisting of durable masonry materials and include brick, split or scored concrete masonry units (CMU), natural or synthetic stone, or other architectural material(s) that, in the opinion of the Director, meet the intent of this section. Painted surfaces and wood shall not be used.

Exemptions from sign permit:

- Sign panel replacement on multi-tenant sign, provided the panel to be replaced does not exceed six square feet.



B

(1) Reading of Flush Mounted Channel Letters (FB-FM-WT 32)

Scale: 1/2" = 1'-0"

33,444" x 145,5" = 33,8 Sq. Ft.

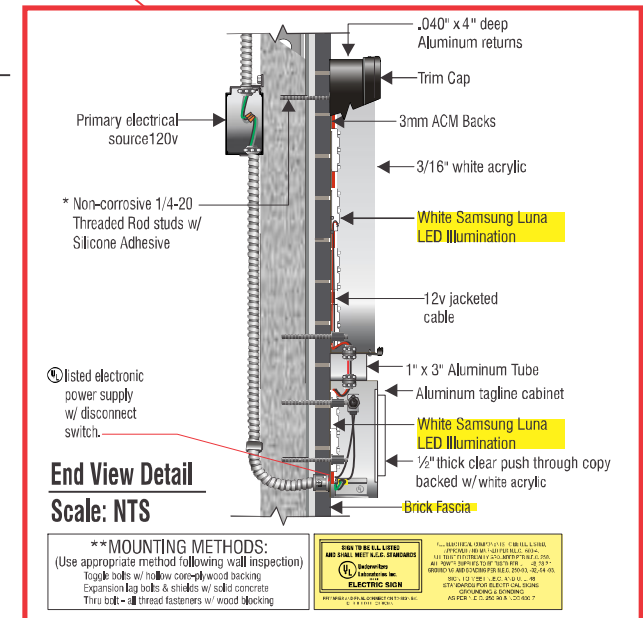
Sign Notes

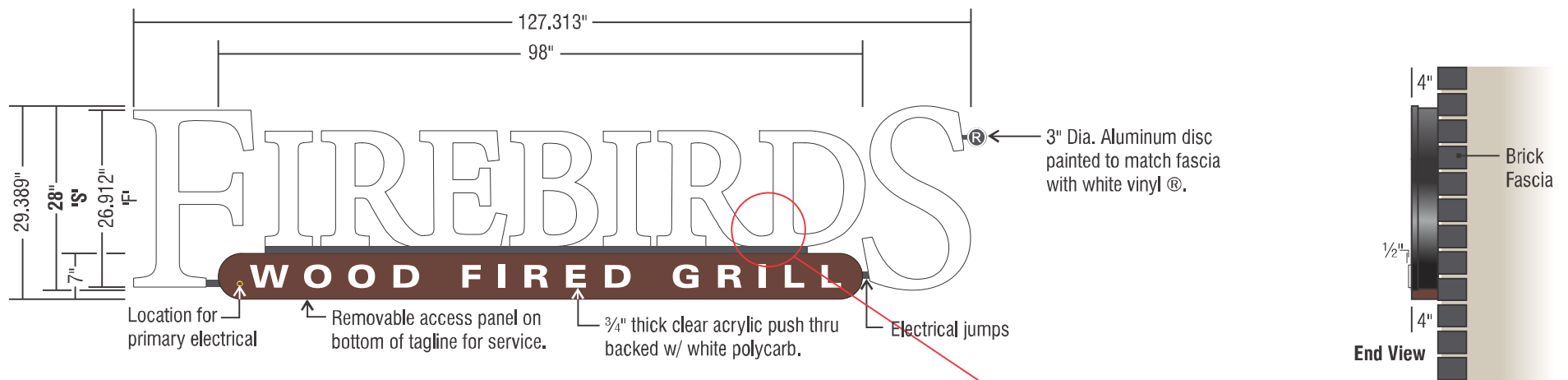
Lighted Channel Letters fabricated from aluminum (.040" returns [4" deep], 3mm ACM Backs) with returns finished Black. Letters to have 3/16" white acrylic faces. Faces secured to returns via 1" Black jewelite trim cap. "IREBIRD" letters will mount on top of a 1" x 3" aluminum tube wireway that will house wiring painted to match fascia. "F & S" letters will jumped from tagline via low voltage wiring and conduit. Letters to be internally illuminated via White Samsung Luna LEDs. All power supplies & secondary wiring will come from inside of the tagline cabinet.

Tagline cabinet to be fabricated from aluminum with .090" aluminum faces w/ routed out copy and have 1/2" thick clear acrylic push thru copy. Acrylic copy will be backed w/ 1/8" white polycarb. Cabinet to have .063" welded aluminum returns [4" deep]. Cabinet and returns to be painted Aurora Brown. Cabinet will be internally lighted via White Samsung Luna LEDs. Cabinet and letters will mount flush to exterior brick fascia via approved hardware.

Color Notes

	3/16" 2447 White acrylic - faces
	1/8" White polycarb - back panel (push thru copy)
	White (vinyl) - ®
	Black Coil Stock - letter returns
	Black Jewelite - trim cap
	SW 2837 Aurora Brown (satin) - tagline cabinet
	SW 6990 Caviar (satin) - electrical jumps, connectable wireway & ® disc





C (1) Reading of Flush Mounted Channel Letters (FB-FM-WT 28)

Scale: 1/2" = 1'-0"

29,389" x 127,313" = 25,983 Sq. Ft.

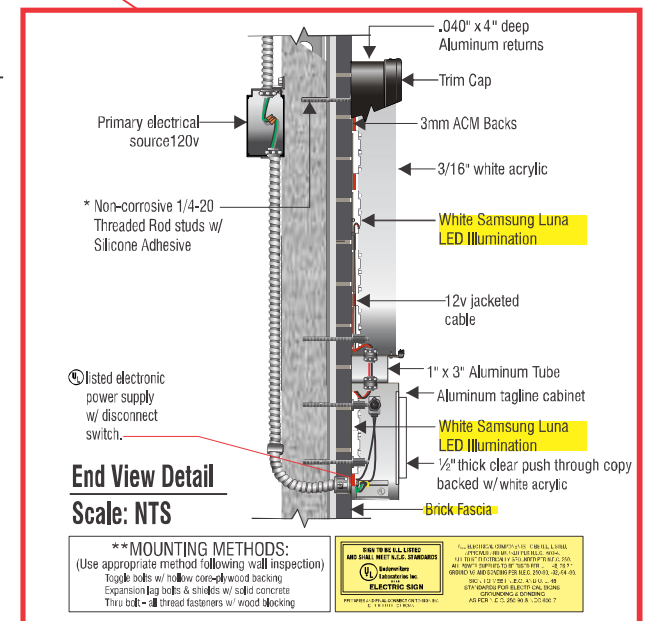
Sign Notes

Lighted Channel Letters fabricated from aluminum (.040" returns [4" deep], 3mm ACM Backs) with returns finished Black. Letters to have 3/16" white acrylic faces. Faces secured to returns via 1" Black jewelite trim cap. "IREBIRD" letters will mount on top of a 1" x 3" aluminum tube wireway that will house wiring painted to match fascia. "F & S" letters will jumped from tagline via low voltage wiring and conduit. Letters to be internally illuminated via White Samsung Luna LEDs. All power supplies & secondary wiring will come from inside of the tagline cabinet.

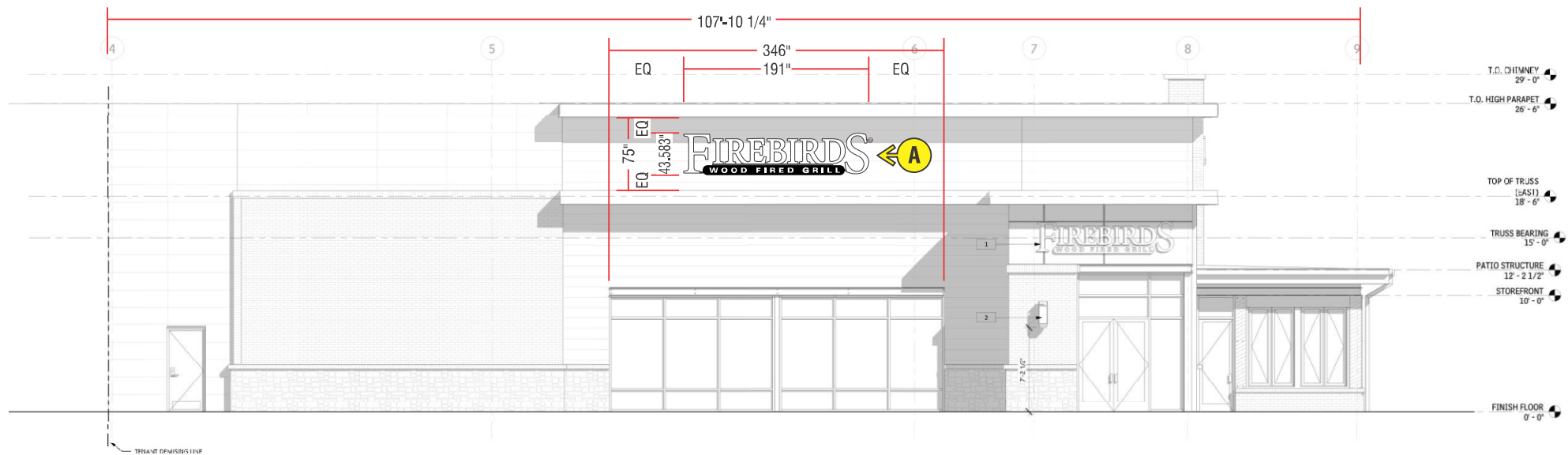
Tagline cabinet to be fabricated from aluminum with .090" aluminum faces w/ routed out copy and have 1/2" thick clear acrylic push thru copy. Acrylic copy will be backed w/ 1/8" white polycarb. Cabinet to have .063" welded aluminum returns [4" deep]. Cabinet and returns to be painted Aurora Brown. Cabinet will be internally lighted via White Samsung Luna LEDs. Cabinet and letters will mount flush to exterior brick fascia via approved hardware.

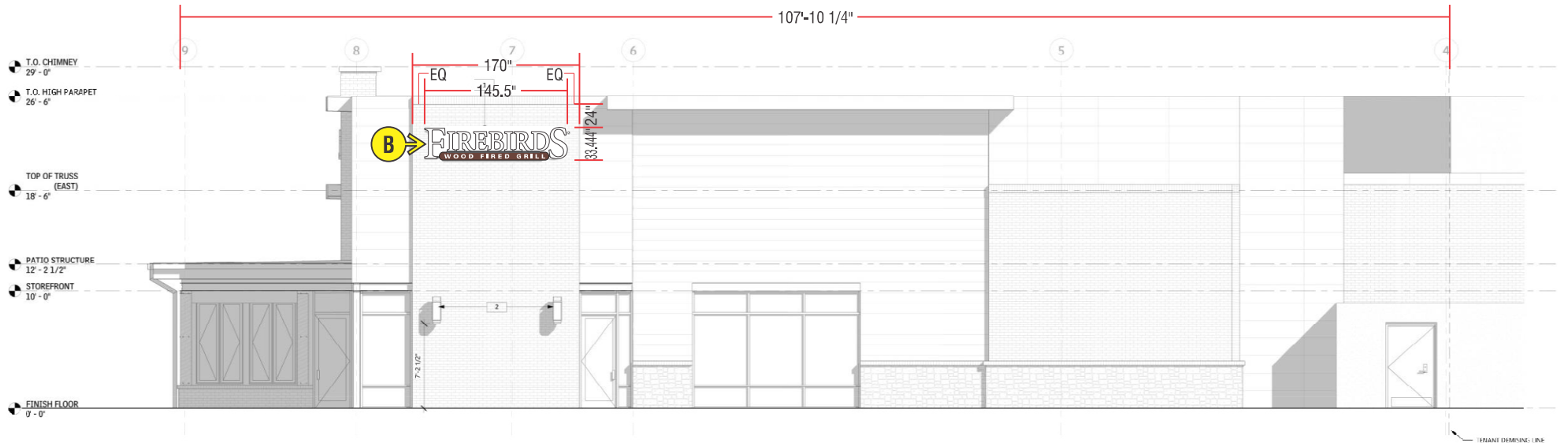
Color Notes

	3/16" 2447 White acrylic - faces
	1/8" White polycarb - back panel (push thru copy)
	White (vinyl) - ®
	Black Coil Stock - letter returns
	Black Jewelite - trim cap
	SW 2837 Aurora Brown (satin) - tagline cabinet
	SW 6990 Caviar (satin) - electrical jumps, connector tube wireway & ® disc

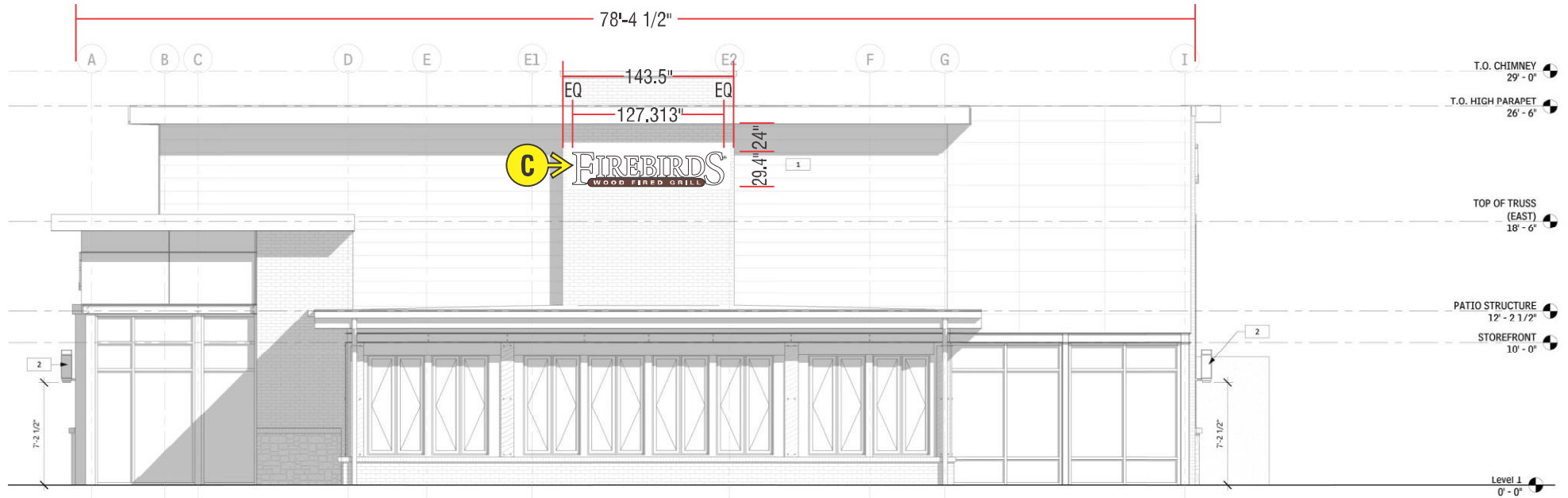


Option 2



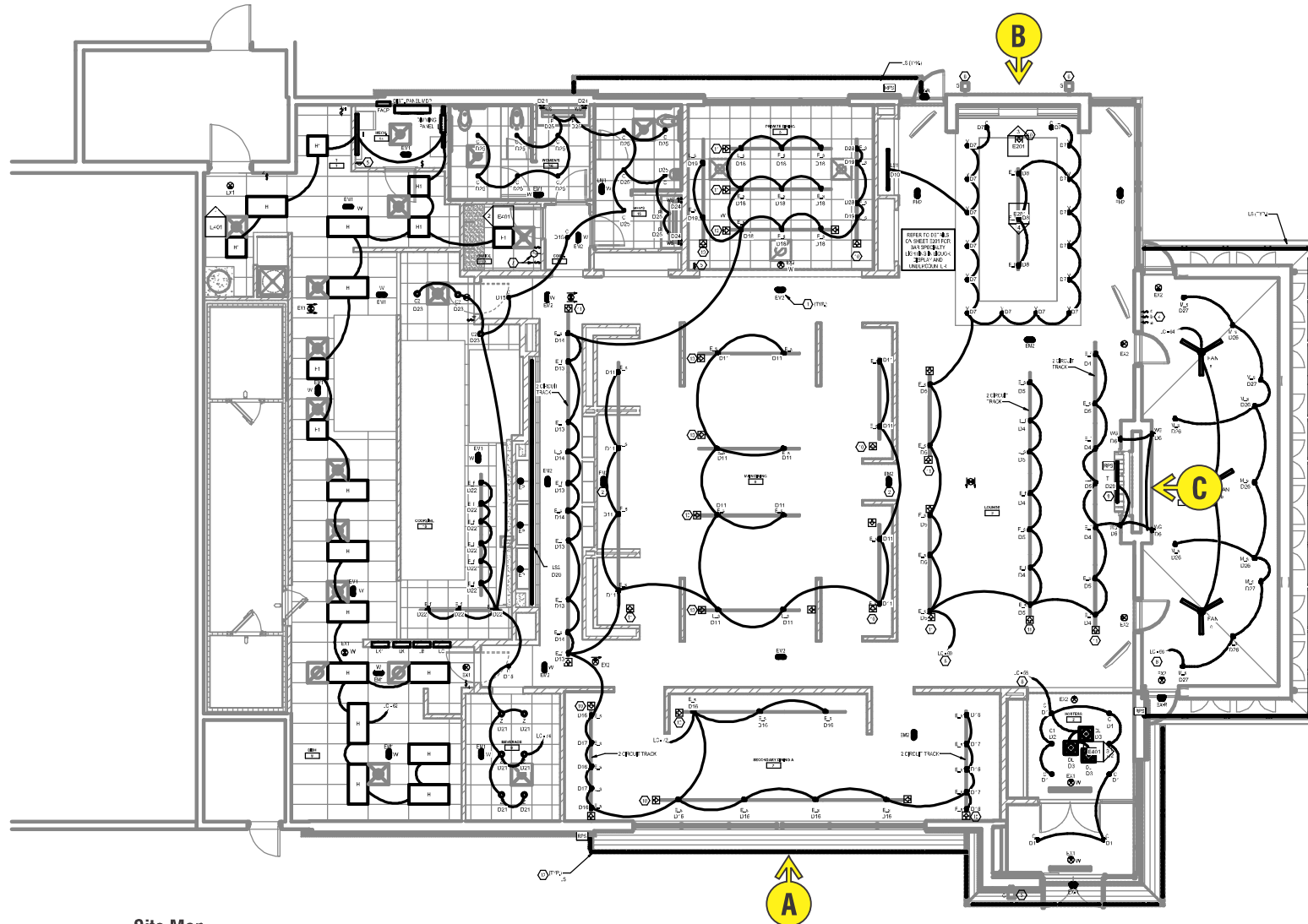


Back Elevation
Scale: 3/32" = 1'-0"



Patio Elevation

Scale: 3/32" = 1'-0"



Site Map

Scale: 1/16" = 1'-0"

