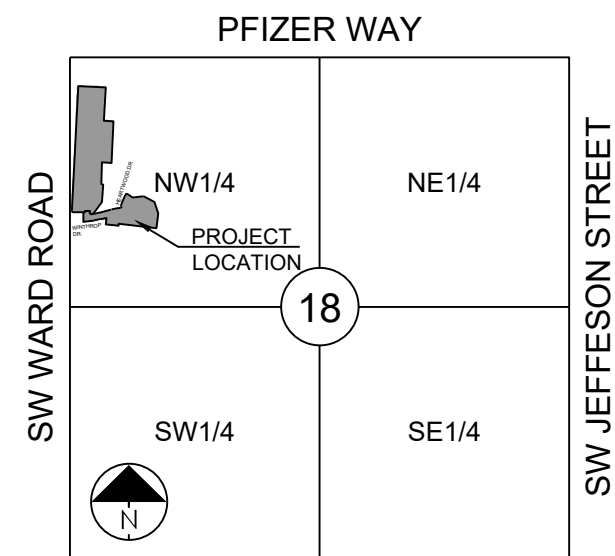


PROJECT BENCHMARK:

SW CORNER NW 1/4 SEC. 18-47N-31W, JACKSON COUNTY, MO.
 3" DIAMETER ALUMINUM DISK IN MONUMENT BOX
 M.D.N.R. DOC. NO. 600-65374

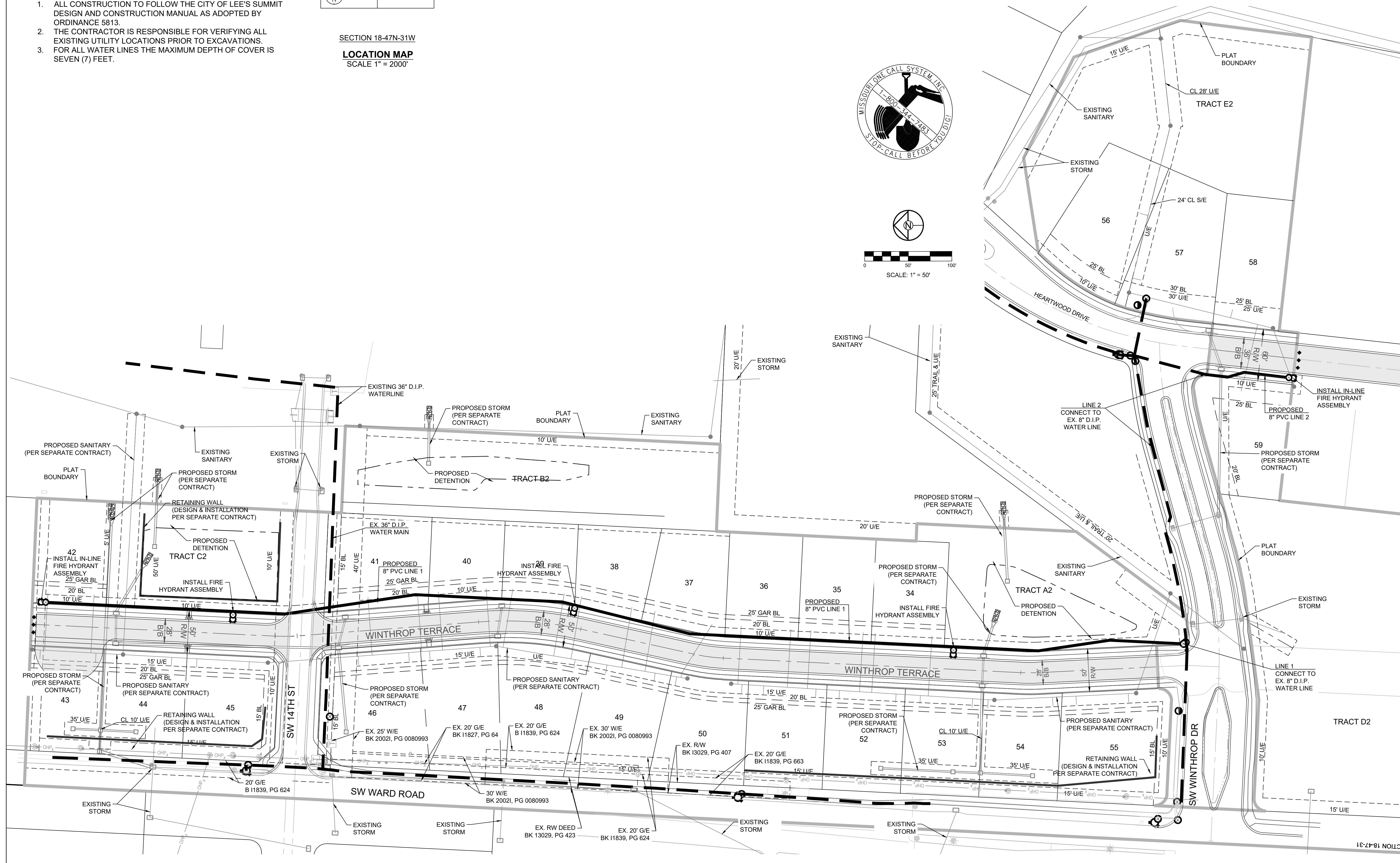
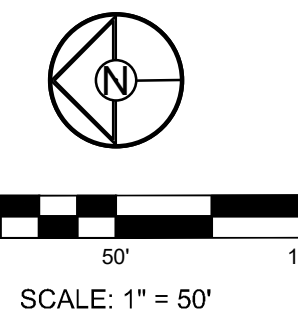
ELEV. 1036.41



SECTION 18-47N-31W
LOCATION MAP
 SCALE 1" = 2000'

GENERAL NOTES:

1. ALL CONSTRUCTION TO FOLLOW THE CITY OF LEE'S SUMMIT DESIGN AND CONSTRUCTION MANUAL AS ADOPTED BY ORDINANCE 5813.
2. THE CONTRACTOR IS RESPONSIBLE FOR VERIFYING ALL EXISTING UTILITY LOCATIONS PRIOR TO EXCAVATIONS.
3. FOR ALL WATER LINES THE MAXIMUM DEPTH OF COVER IS SEVEN (7) FEET.



SCHLAGEL
 ENGINEERS PLANNERS SURVEYORS LANDSCAPE ARCHITECTS
 14920 West 107th Street • Lenexa, Kansas 66215
 (913) 492-5158 • Fax: (913) 492-8400
 WWW.SCHLAGELASSOCIATES.COM
 Missouri State Certificates of Authority
 #E200203690F #LAC201005237 #S200200895F

PREPARED BY:

 05.05.2020

SCHLAGEL & ASSOCIATES, P.A.

**WOODLAND GLEN 2ND PLAT
 WATER LINE PLANS
 WARD ROAD AND WINTHROP DRIVE
 LEE'S SUMMIT, MISSOURI**

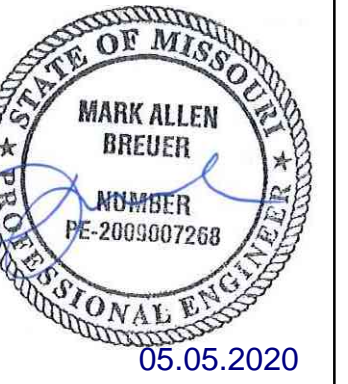
REVISION DATE	DESCRIPTION
4-21-2020	CITY COMMENTS

DRAWN BY:	RPB
CHECKED BY:	MAB
DATE PREPARED:	02/26/2020
PROJ. NUMBER:	18-017

GENERAL LAYOUT
 SHEET
2

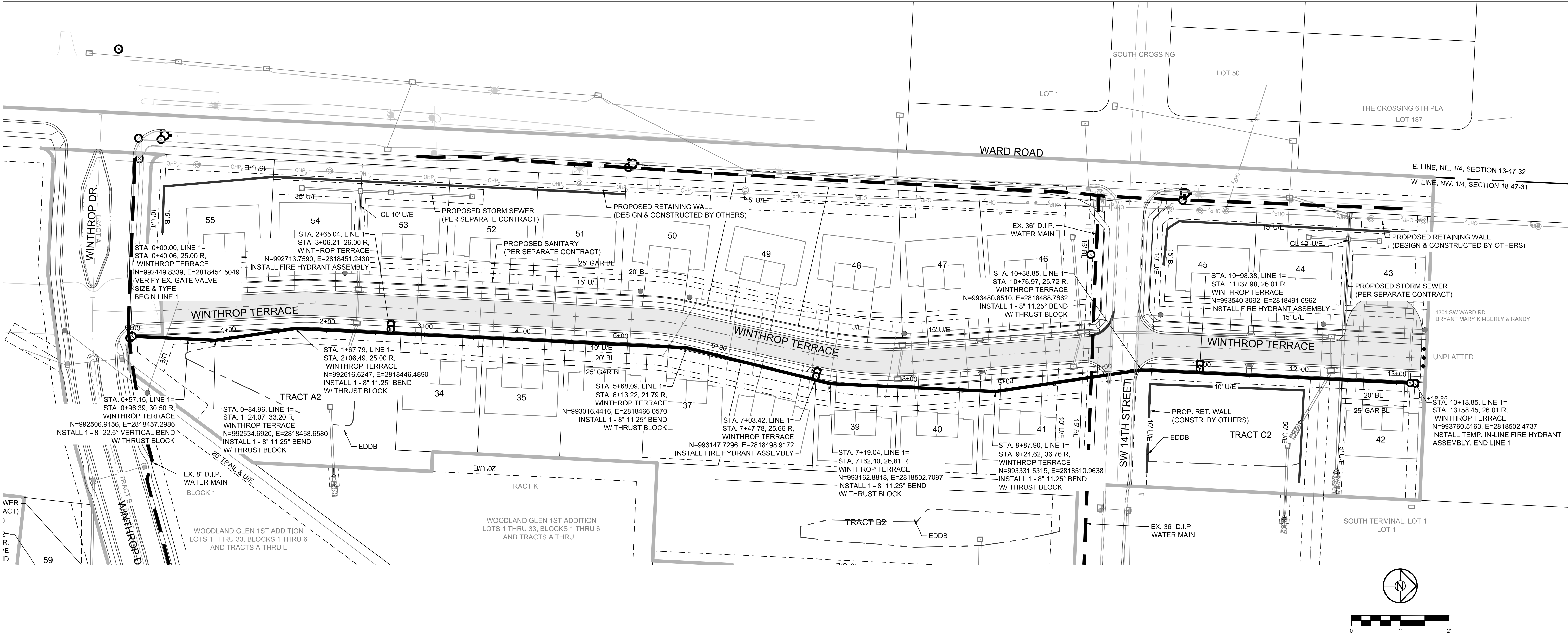
I:\PROJECTS\2018\18-017\3.0 Design\3.0 DWG Plans\8.0 Water\18-017 WATER CL.dwg, 4/21/2020, 2:04:06 PM, 1:1

PREPARED BY:

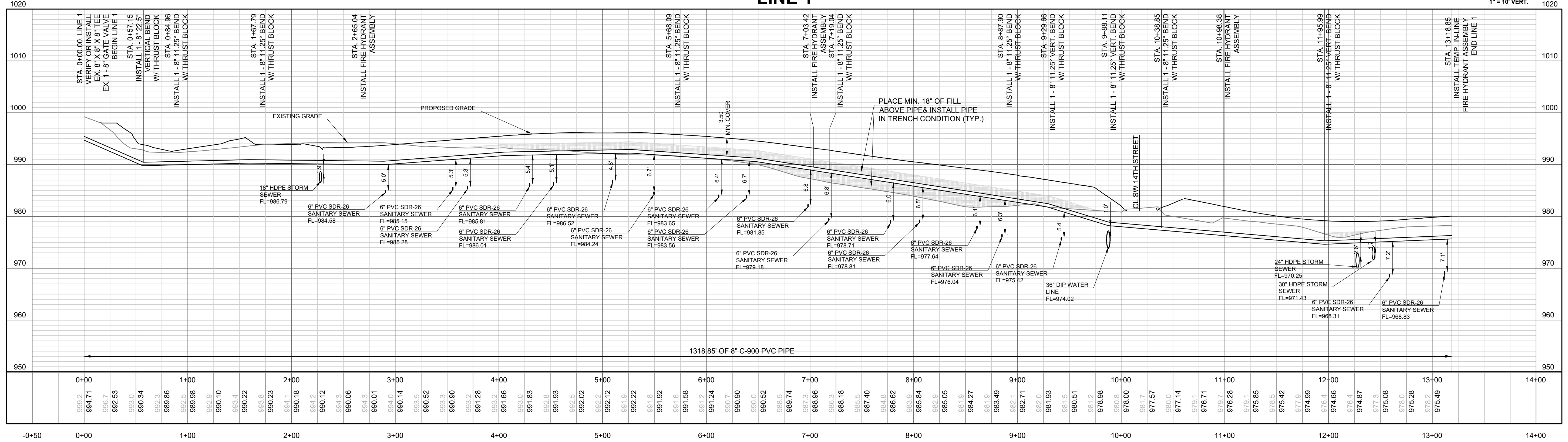


SCHLAGEL & ASSOCIATES, P.A.

**WOODLAND GLEN 2ND PLAT
 WATER LINE PLANS
 WARD ROAD AND WINTHROP DRIVE
 LEE'S SUMMIT, MISSOURI**



LINE 1



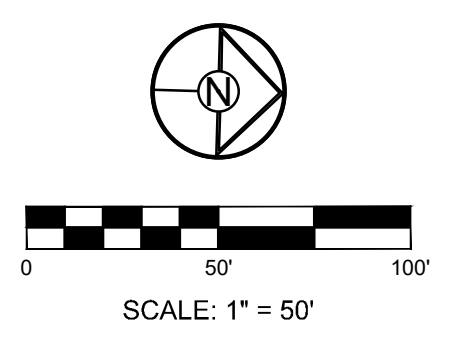
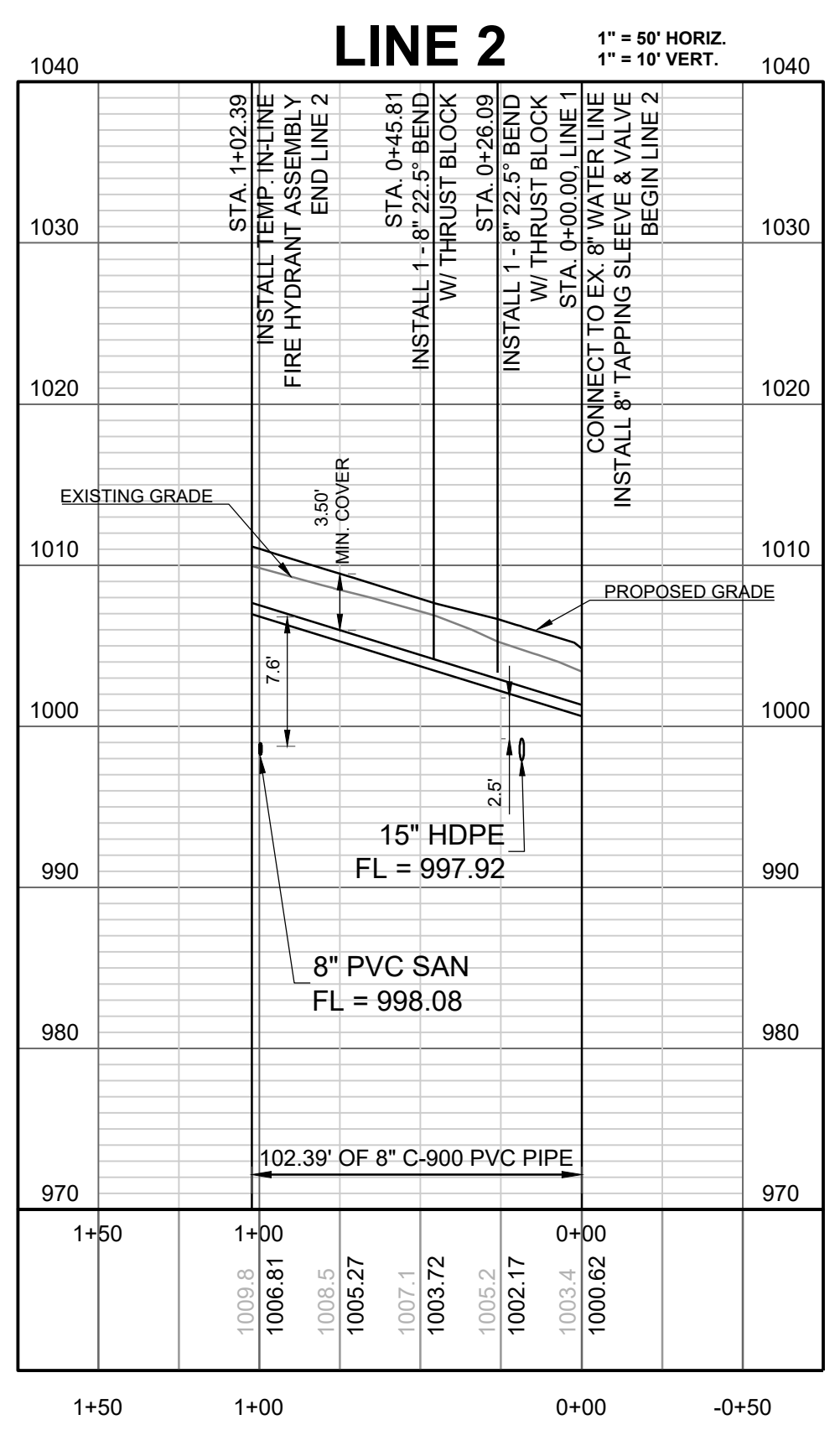
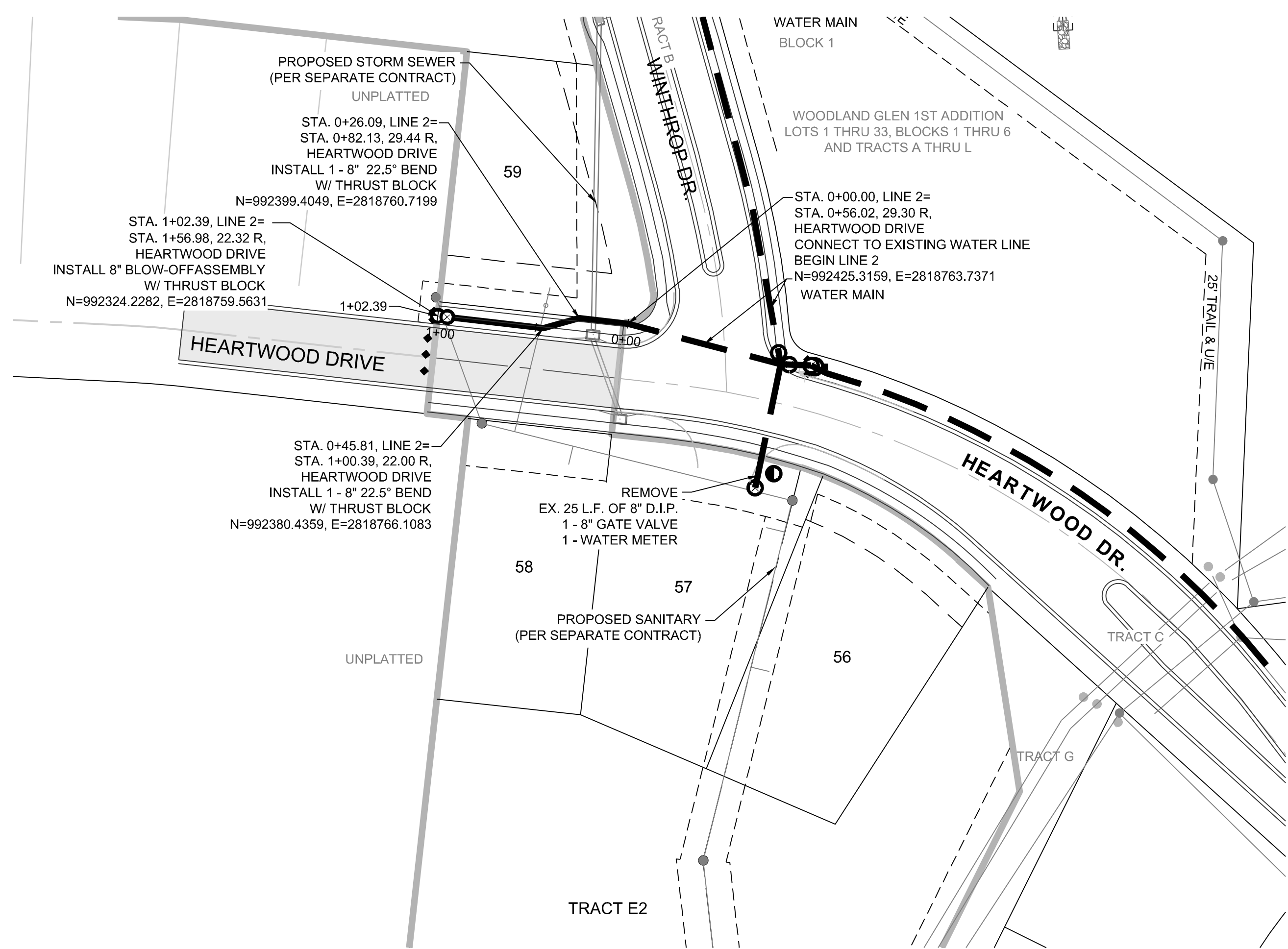
REVISION DATE	DESCRIPTION
4-21-2020	CITY COMMENTS

DRAWN BY:	CHECKED BY:	DATE PREPARED:	PROJ. NUMBER:
RPM	MAB	02/20/2020	18-017

LINE 1 PLAN AND PROFILE

SHEET

I:\PROJECTS\2018\18-017\3.0 Design\3.0 DWG Plans\8.0 Water\18-017 WATER PP.dwg, 4/21/2020, 2:07:39 PM, 1:1



WOODLAND GLEN 2ND PLAT
 WATER LINE PLANS
 WARD ROAD AND WINTHROP DRIVE
 LEE'S SUMMIT, MISSOURI

REVISION DATE	DESCRIPTION
1 4-21-2020	CITY COMMENTS
2	
3	
4	
5	
6	
7	
8	

DRAWN BY: RPM	CHECKED BY: MAB	DATE PREPARED: 02/20/2020	PROJ. NUMBER: 18-017
------------------	--------------------	------------------------------	-------------------------

I:\PROJECTS\2018\18-017\3.0 Design\3.0 DWG Plans\8.0 Water\18-017 WATER PP.dwg, 4/21/2020, 2:07:47 PM, 1:1

