

McCownGordon  
850 Main Street  
Kansas City, Missouri 64105  
Phone: (816) 960-1111  
Fax: (816) 960-1182

**Project:** 1-07-1212 - SLE - Flex Capacity Expansion  
100 NE St Luke's Blvd  
Lee's Summit, Missouri 64086

## Water Meter Vaults Shop Drawings

<b>REVISION:</b>	0	<b>SUBMITTAL MANAGER:</b>	Sam Parks (McCownGordon Construction, LLC)
<b>STATUS:</b>	In Review	<b>DATE CREATED:</b>	03/13/2020
<b>ISSUE DATE:</b>	03/13/2020	<b>SPEC SECTION:</b>	331116 - Site Water Lines
<b>RESPONSIBLE CONTRACTOR:</b>	Rodriguez Mechanical Contractors, Inc.	<b>RECEIVED FROM:</b>	Pat Wheeler
<b>RECEIVED DATE:</b>		<b>SUBMIT BY:</b>	
<b>FINAL DUE DATE:</b>	05/4/2020	<b>LOCATION:</b>	
<b>SUB JOB:</b>		<b>COST CODE:</b>	
		<b>TYPE:</b>	Product Data
<b>APPROVERS:</b>	Ashlee Deck (ACI/Boland, Inc.), Matt Eblen (McClure Engineering Company)		
<b>BALL IN COURT:</b>	Ashlee Deck (ACI/Boland, Inc.), Matt Eblen (McClure Engineering Company)		
<b>DISTRIBUTION:</b>	Sam Beckman (ACI/Boland, Inc.) , Tyler Stotler (McCownGordon Construction, LLC) , Sam Parks (McCownGordon Construction, LLC) , Travis Grimes (McCownGordon Construction, LLC) , Brian Dostal (ACI/Boland, Inc.) , Ashlee Deck (ACI/Boland, Inc.)		
<b>DESCRIPTION:</b>			
<b>ATTACHMENTS:</b>			

### SUBMITTAL WORKFLOW

NAME	DUE DATE	RETURNED DATE	RESPONSE	ATTACHMENTS	COMMENTS
Ashlee Deck	5/4/2020		Pending		
Matt Eblen	5/4/2020		Pending		

Project 07-1212 Submittal No. 331116-2.0 Water Meter Vaults Shop Drawings  
**REVIEWED ONLY**

Contractor's review is for general compliance with the information provided in the Contract Documents and for general conformance with the design concept of the project. Any action noted herein is subject to the requirements set forth in the Contract Documents. Subcontractor/Supplier is responsible for all dimensions which shall be confirmed at the jobsite; all fabrication processes and techniques of construction; the coordination of Subcontractor's work with that of all other trades, and the performance of Subcontractor's work in accordance with the Contract Documents

**McCownGordon Construction**

sparks 7:59:41 AM 04/30/2020

BY

DATE

COPIES TO



**RODRIGUEZ**  
MECHANICAL CONTRACTORS Inc.

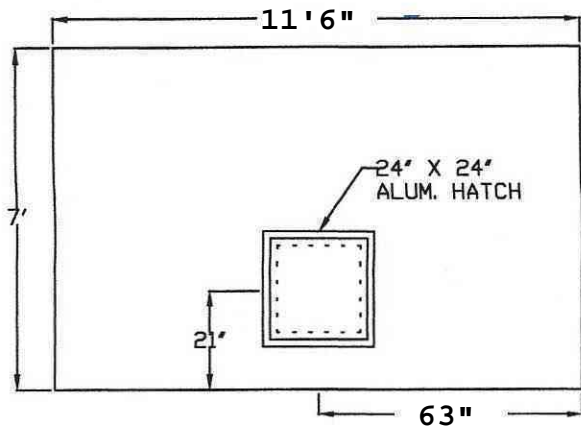
# **Submittals**

## **St. Luke's Flex Capacity Expansion Project**

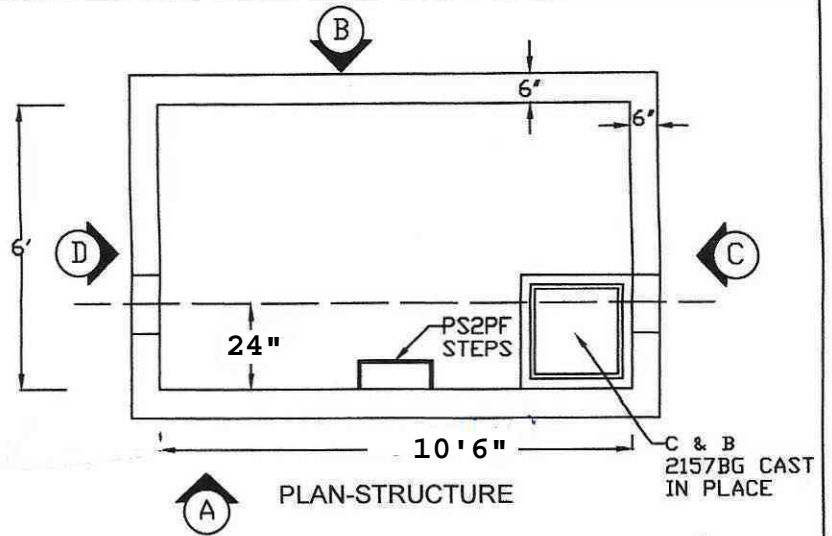
### **4" Water Meter Vault**

**Submitted by  
Rodriguez Mechanical Contractors  
541 S11th Street  
Kansas City, KS 66105**

541 S. 11 th Street. Kansas City, Kansas 66105  
(913) 281-1814 . Fax ( 913) 621-4354  
"Equal Opportunity Employer"



PLAN-TOP SLAB



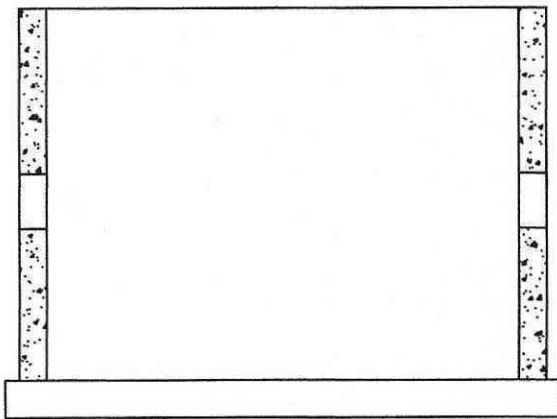
PLAN-STRUCTURE

REBAR PLACEMENT

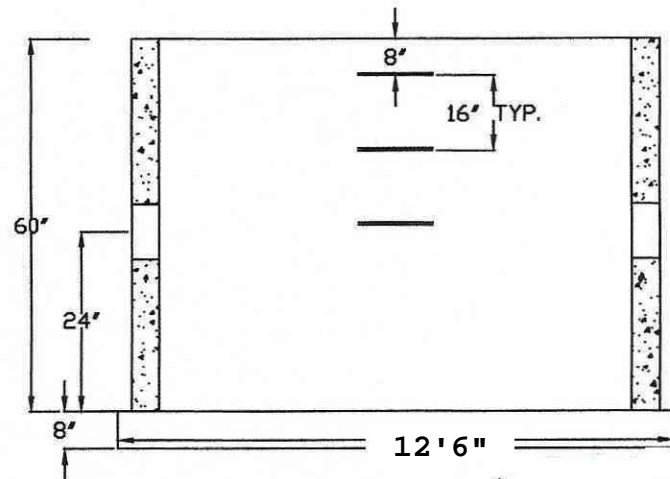
- #5 @ 12" C/C EA. WAY WALLS
- #5 @ 6" C/C EA. WAY TOP SLAB
- #5 @ 12" C/C EA. WAY BOT SLAB



ELEVATION-TOP SLAB

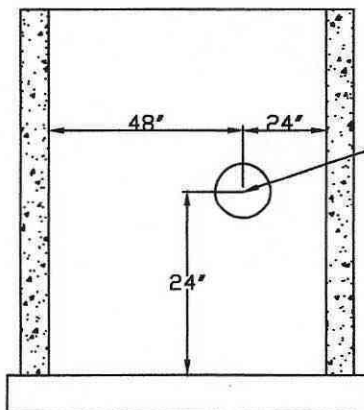


ELEVATION B



ELEVATION A

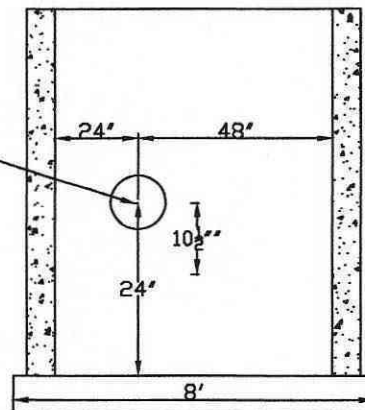
WT. TOP SLAB 7384#  
 WT. TOP SECT. 14197#  
 WT. BOT SECT. W/BASE 14341#



ELEVATION D

8" DIA HOLE

*2 Reg.*



ELEVATION C