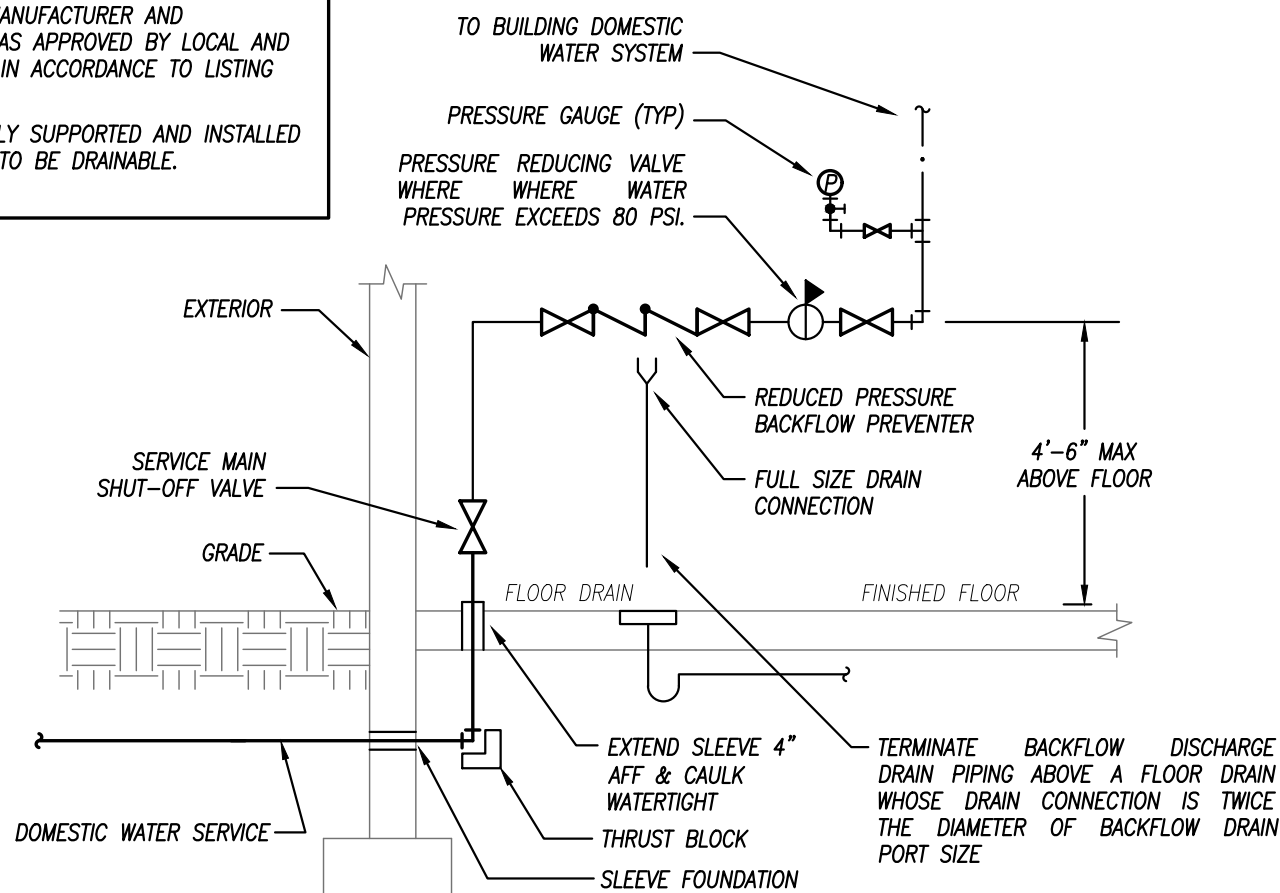
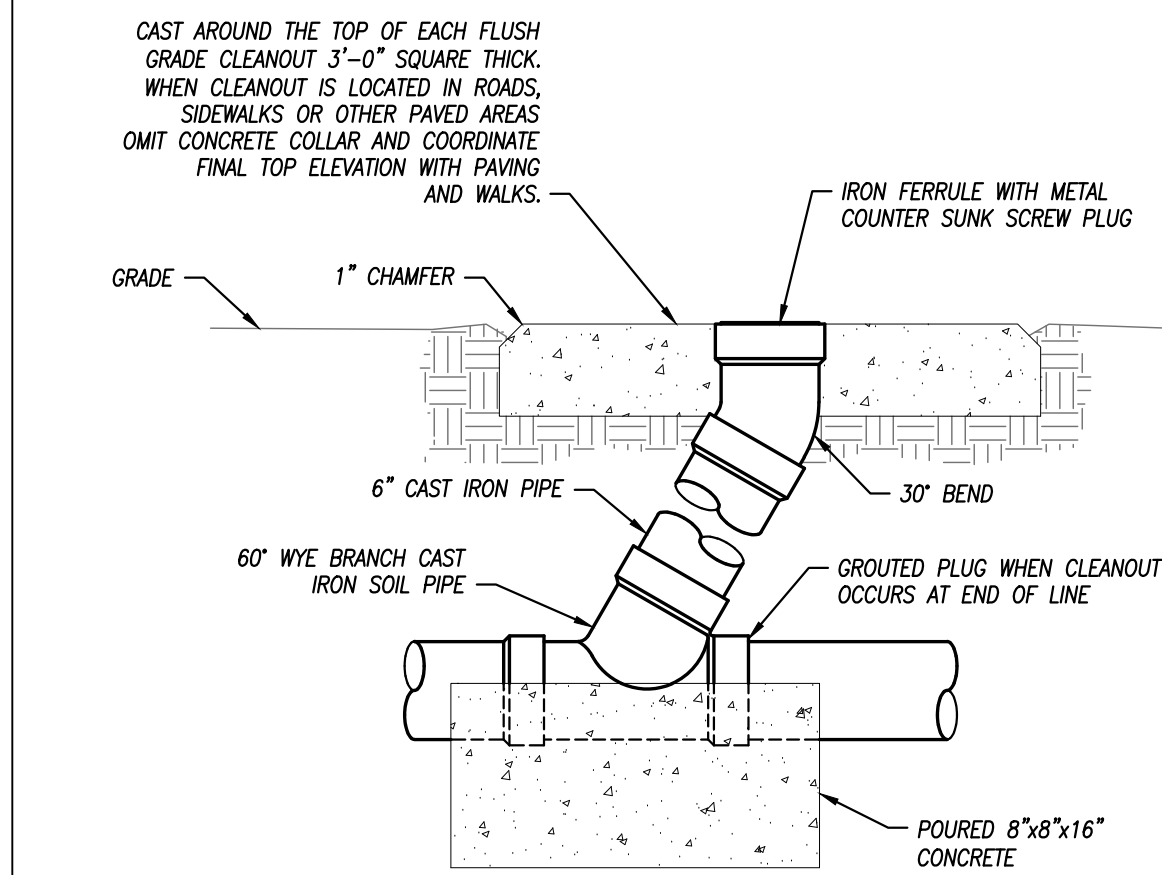


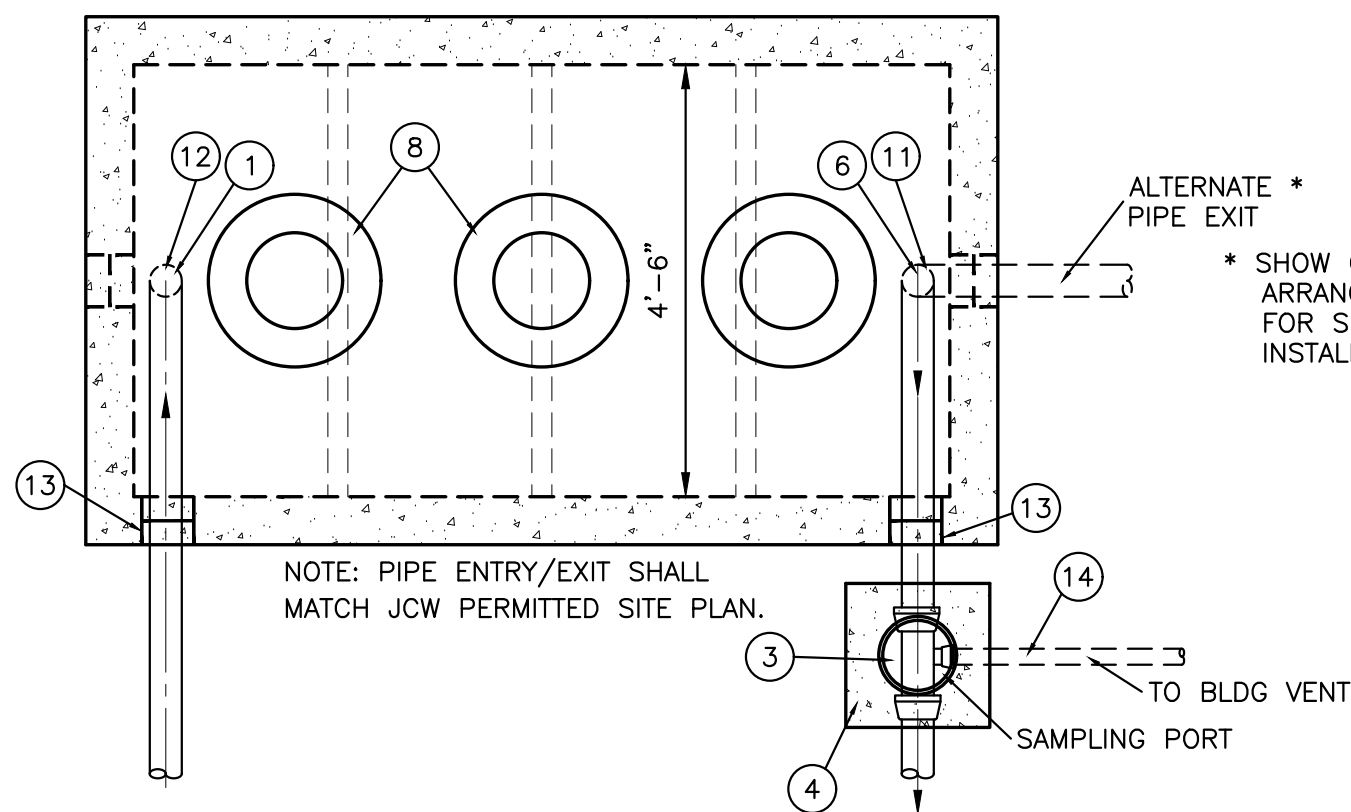
NOTES:
1. BACKFLOW PREVENTER MANUFACTURER AND INSTALLATION SHALL BE AS APPROVED BY LOCAL AND STATE AUTHORITIES AND IN ACCORDANCE TO LISTING OF DEVICE.
2. ALL PIPING TO BE RIGIDLY SUPPORTED AND INSTALLED IN SUCH A MANNER AS TO BE DRAINABLE.



**WATER SERVICE
REDUCED PRESSURE BACKFLOW PREVENTER DETAIL**
NOT TO SCALE
KCMO STANDARDS
511-02k

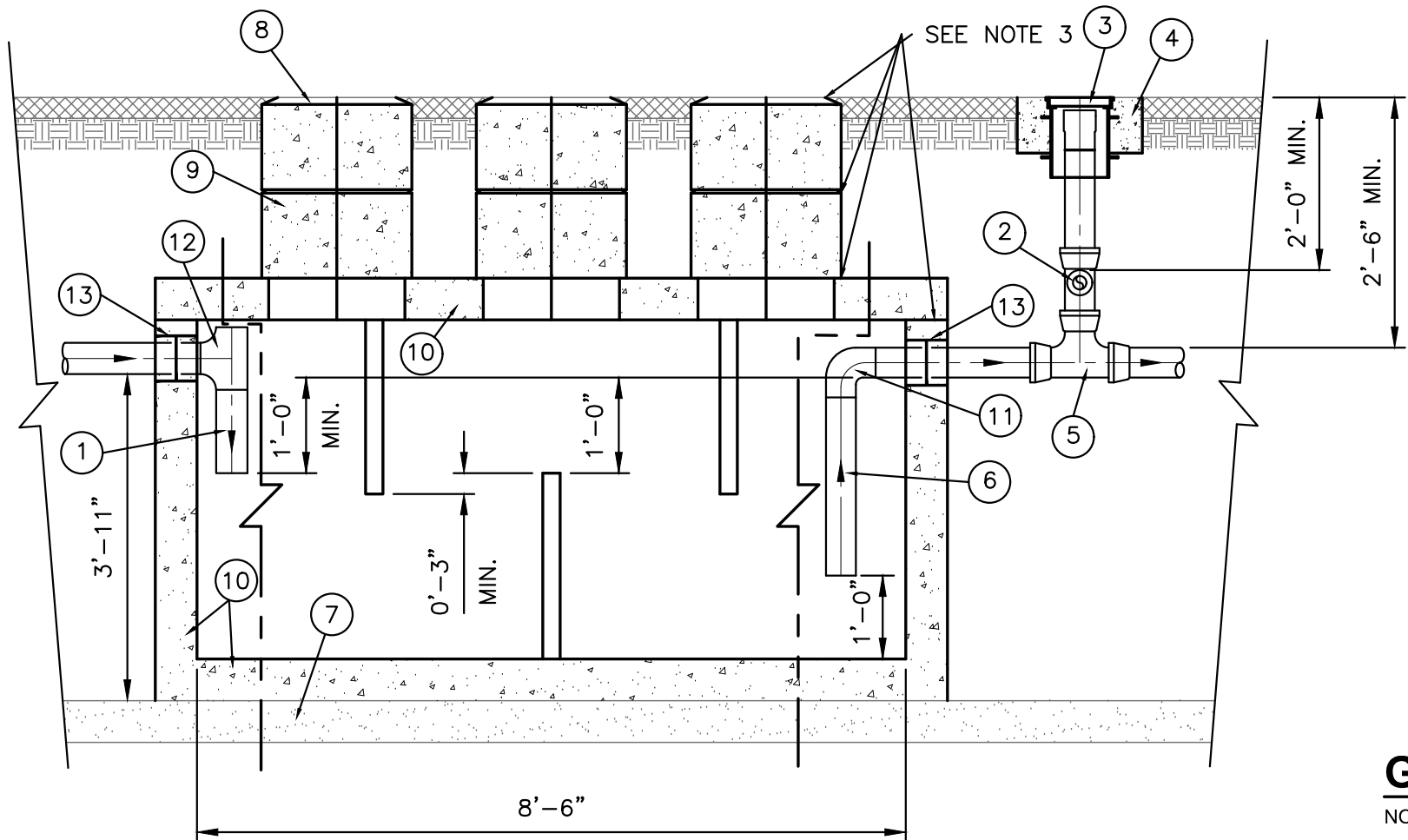


FLUSH GRADE CLEANOUT DETAIL
NOT TO SCALE
525-01



ALTERNATE *
PIPE EXIT
* SHOW ONLY PIPE
ARRANGEMENT REQUIRED
FOR SPECIFIC PROJECT
INSTALLATION.

NOTE: PIPE ENTRY/EXIT SHALL
MATCH JCW PERMITTED SITE PLAN.



GREASE INTERCEPTOR DETAIL
NOT TO SCALE
523-01

GREASE INTERCEPTOR SCHEDULE

MANUFACTURER	MODEL NO.	CAPACITY US gal	FULL WT (LBS)	LENGTH L	WIDTH W	HEIGHT H	INLET FL1	OUTLET FL2	NOTES
OLD CASTLE	GI-1500	1500	20255	60	90"	84"	26"	26"	1

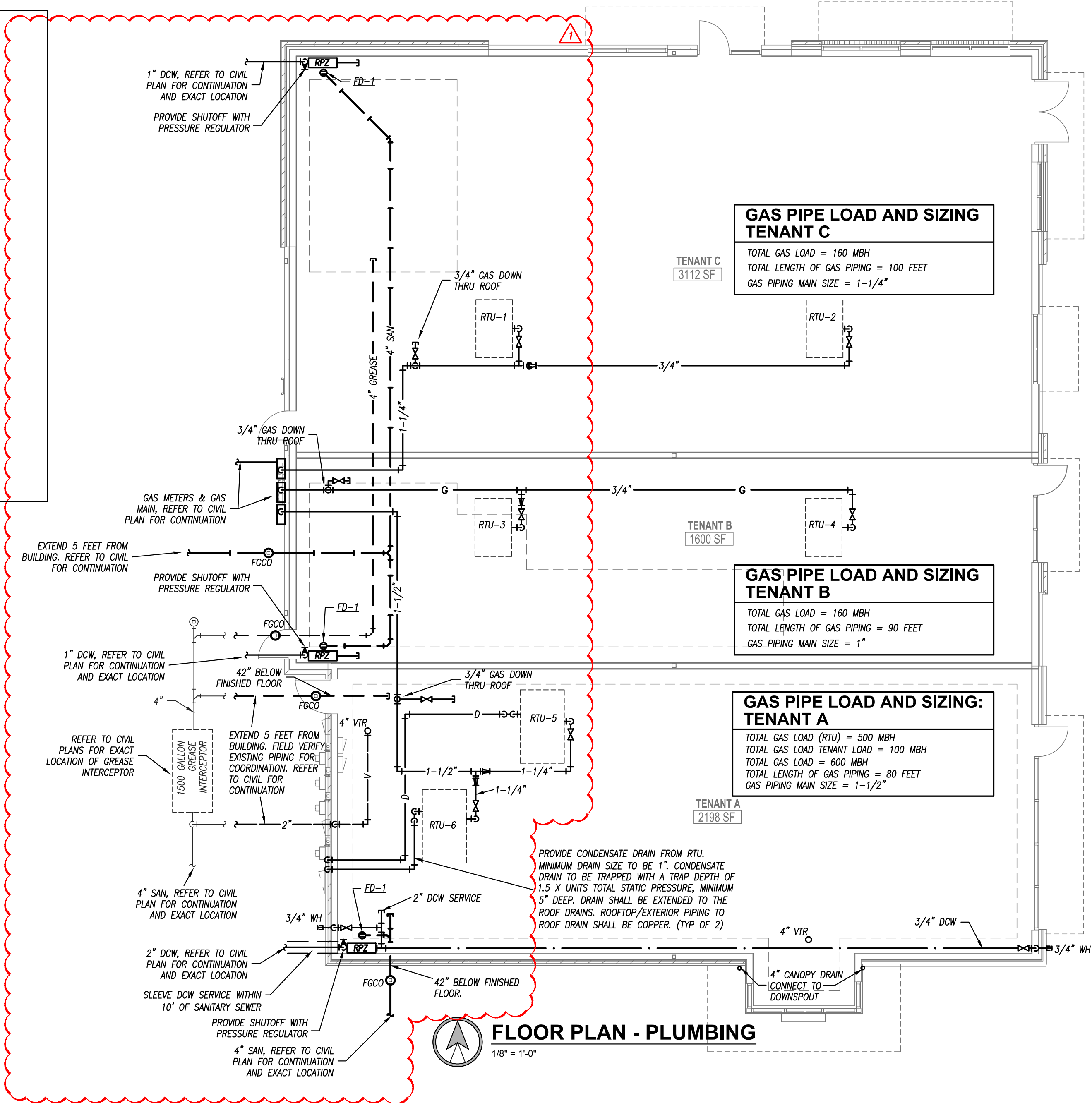
NOTES
1. REINFORCED TANK WITH MESH THROUGHOUT. REINFORCED LID FOR DRIVE AREA. 4000 LB CONCRETE.

ITEM	DESCRIPTION
1	4" ABS INLET PIPE*
2	4"x4"x2" TEE WITH 2" PIPE TO BUILDING VENT*
3	THREADED C/O CAP JOSAM 58860 OR APP EQUAL**
4	CONCRETE PAD
5	4"x4"x4" TWO-WAY CLEANOUT TEE*
6	4" ABS OUTLET*
7	4" - 6" GRAVEL BEDDING
8	HEAVY-DUTY CAST IRON FRAME AND COVER ***
9	CONCRETE ADJUSTMENT RINGS
10	REINFORCE AS REQUIRED FOR SERVICE CONDITIONS
11	4" ABS 90° ELBOW*
12	4" ABS TEE*
13	A-LOK OR PRESS SEAL PSX PIPE/WALL CONNECTOR
14	2" VENT PIPE

* 6" PIPE MAY BE SUBSTITUTED TO MATCH UPSTREAM PIPE DIAMETER.
** REFER TO CLEAN OUT DETAIL(S) ON STANDARD DETAIL SHEET.
*** CLAY & BAILEY 2008 BV OR EQUAL (FROST PROOF COVERS OPTIONAL)

NOTES:

- THREE COVERS AND RISERS SHOWN. TWO COVERS AND RISERS CENTERED OVER UPPER TWO BAFFLES ARE OPTIONAL.
- INTERCEPTOR SIZE - 1500 GAL MINIMUM
- ALL JOINTS AT THE FRAME & COVER*, CONCRETE ADJUSTMENT RINGS AND THE LID OF THE INTERCEPTOR SHALL BE SEALED WITH A MINIMUM OF TWO (2) ROWS OF 3/4 TO 1 INCH PREFORMED BUTYL JOINT SEALER AND A 6" BUTYL JOINT WRAP AROUND SLEEVE (EZ WRAP). THE ENDS OF THE 6" EZ WRAP SHALL OVERLAP BY 12".
- PIPING ON THE INTERIOR OF THE INTERCEPTOR SHALL BE ABS WITH SOLVENT-CEMENTED JOINTS
- GREASE INTERCEPTOR INCLUDING ADJUSTMENT RINGS AND CASTINGS SHALL BE VACUUM TESTED FOR WATER TIGHTNESS AFTER THE BACKFILL OPERATIONS HAVE BEEN COMPLETED IN ACCORDANCE WITH JCW TECHNICAL SPECIFICATIONS. A VACUUM OF 10 INCHES OF MERCURY SHALL BE DRAWN AND WITH THE VACUUM PUMP SHUT OFF THE MERCURY SHALL NOT DROP BELOW 9 INCHES WITHIN 1 MINUTE OR BELOW 5 INCHES WITHIN 5 MINUTES

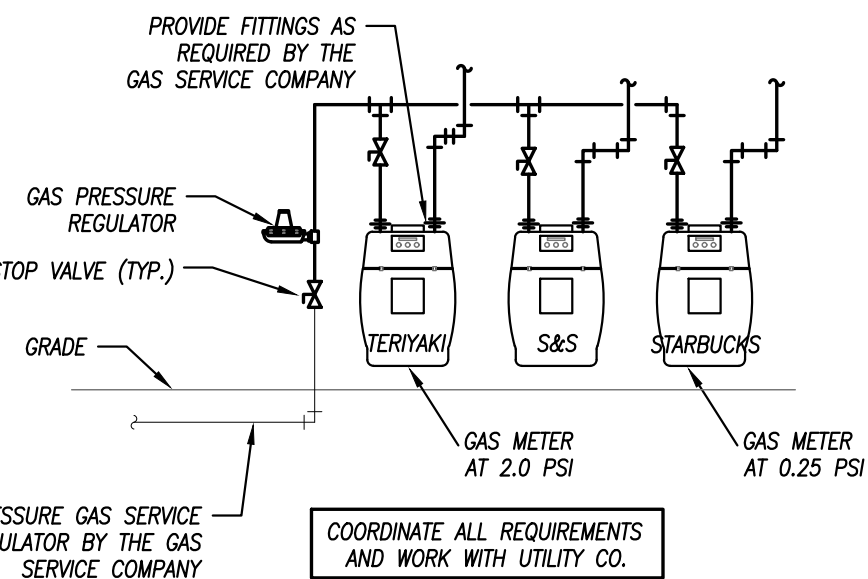


**GAS PIPE LOAD AND SIZING
TENANT C**
TOTAL GAS LOAD = 160 MBH
TOTAL LENGTH OF GAS PIPING = 100 FEET
GAS PIPING MAIN SIZE = 1-1/4"

**GAS PIPE LOAD AND SIZING
TENANT B**
TOTAL GAS LOAD = 160 MBH
TOTAL LENGTH OF GAS PIPING = 90 FEET
GAS PIPING MAIN SIZE = 1"

**GAS PIPE LOAD AND SIZING:
TENANT A**
TOTAL GAS LOAD (RTU) = 500 MBH
TOTAL GAS LOAD TENANT LOAD = 100 MBH
TOTAL GAS LOAD = 600 MBH
TOTAL LENGTH OF GAS PIPING = 80 FEET
GAS PIPING MAIN SIZE = 1-1/2"

FLOOR PLAN - PLUMBING
1/8" = 1'-0"



GAS SERVICE DETAIL
NOT TO SCALE

FLOOR DRAIN SCHEDULE

PLAN MARK	MANUFACTURER	MODEL NUMBER	SERVICE	TOP/GRATE SIZE	WASTE SIZE	REMARKS
FD-1	WADE	1100	FLOOR DRAIN	6"	3"	1

REMARKS:
1. PROVIDE WITH NICKEL BRONZE TOP AND TRAP SEAL.

pkmr
ENGINEERS
PEARSON KENT MCKINLEY RAAP ENGINEERS LLC
2833 SW WOODSIDE DR., SUITE C TOPEKA, KS 66614
785.273.2447
WWW.PKMRENG.COM
MO State Certificate of Authority #E-2002020886



schwerdt design group
architecture | interiors | planning

2231 sw wanamaker rd suite 303
topeka, kansas 66614-4275
phone: 785.273.7540
500 north broadway suite 200
oklahoma city, ok 73102
phone: 405.231.3105



MO State Certificate of
Authority #E-2002020886

**MULTI-TENANT BUILDING
STREETS OF WEST PRYOR, LOT 3
LEE'S SUMMIT, MO**

SUBMISSION DATES
MARCH 31, 2020

SHEET TITLE
PLUMBING PLAN

PROJECT NUMBER
190224

SHEET NUMBER
M-101