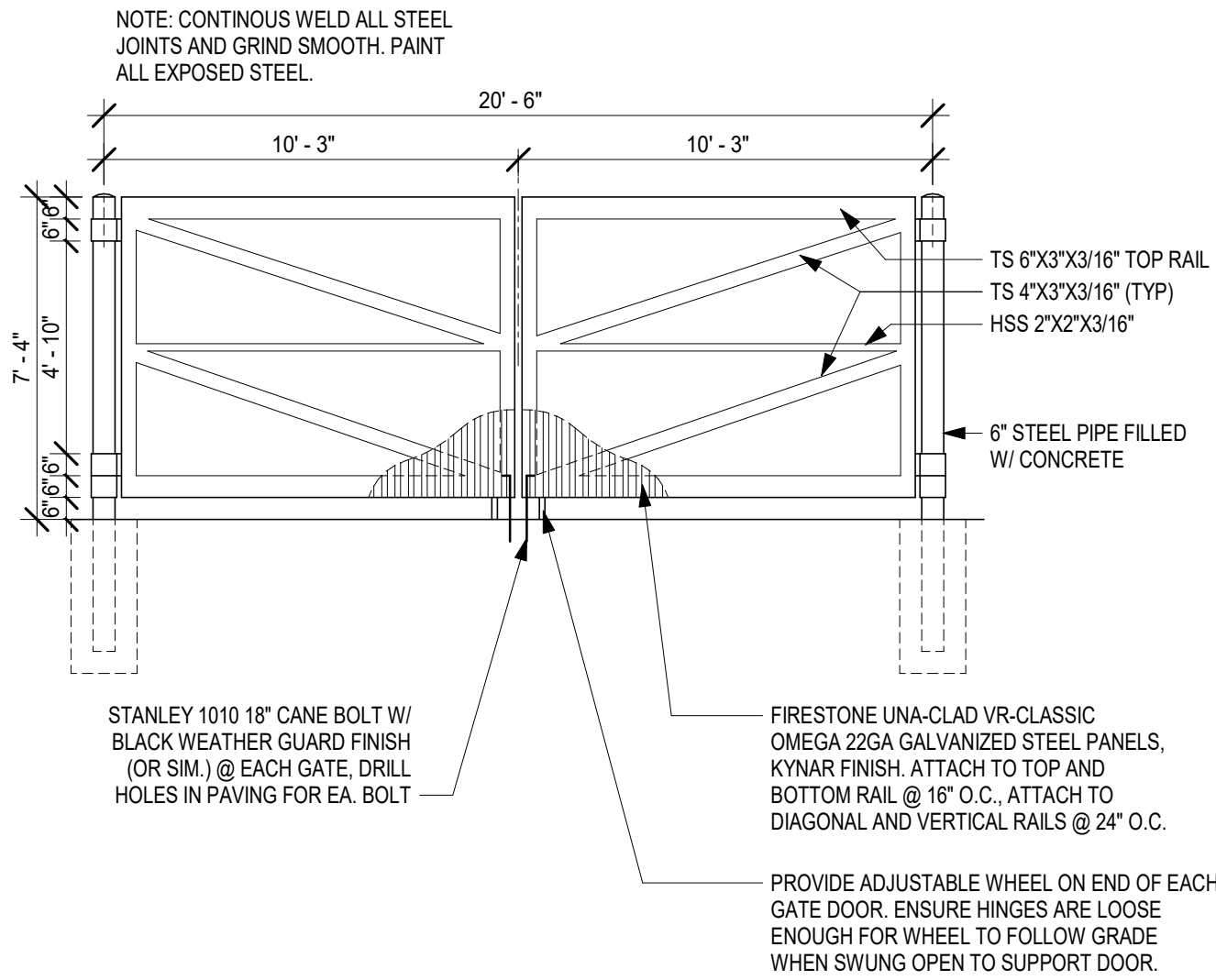
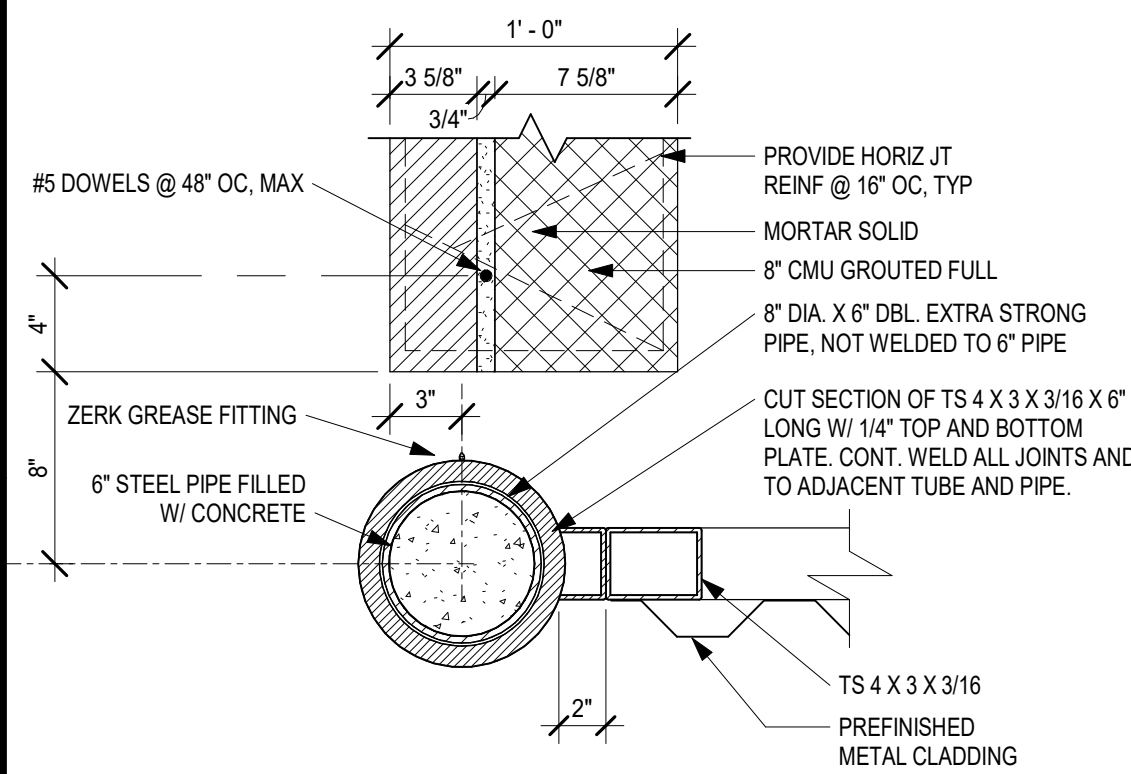


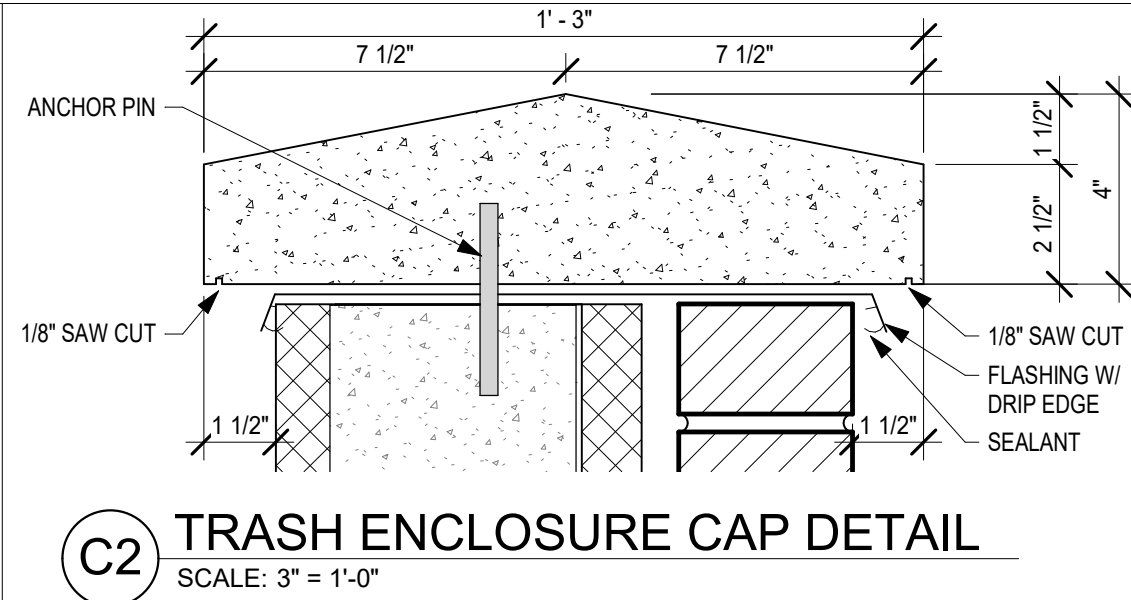
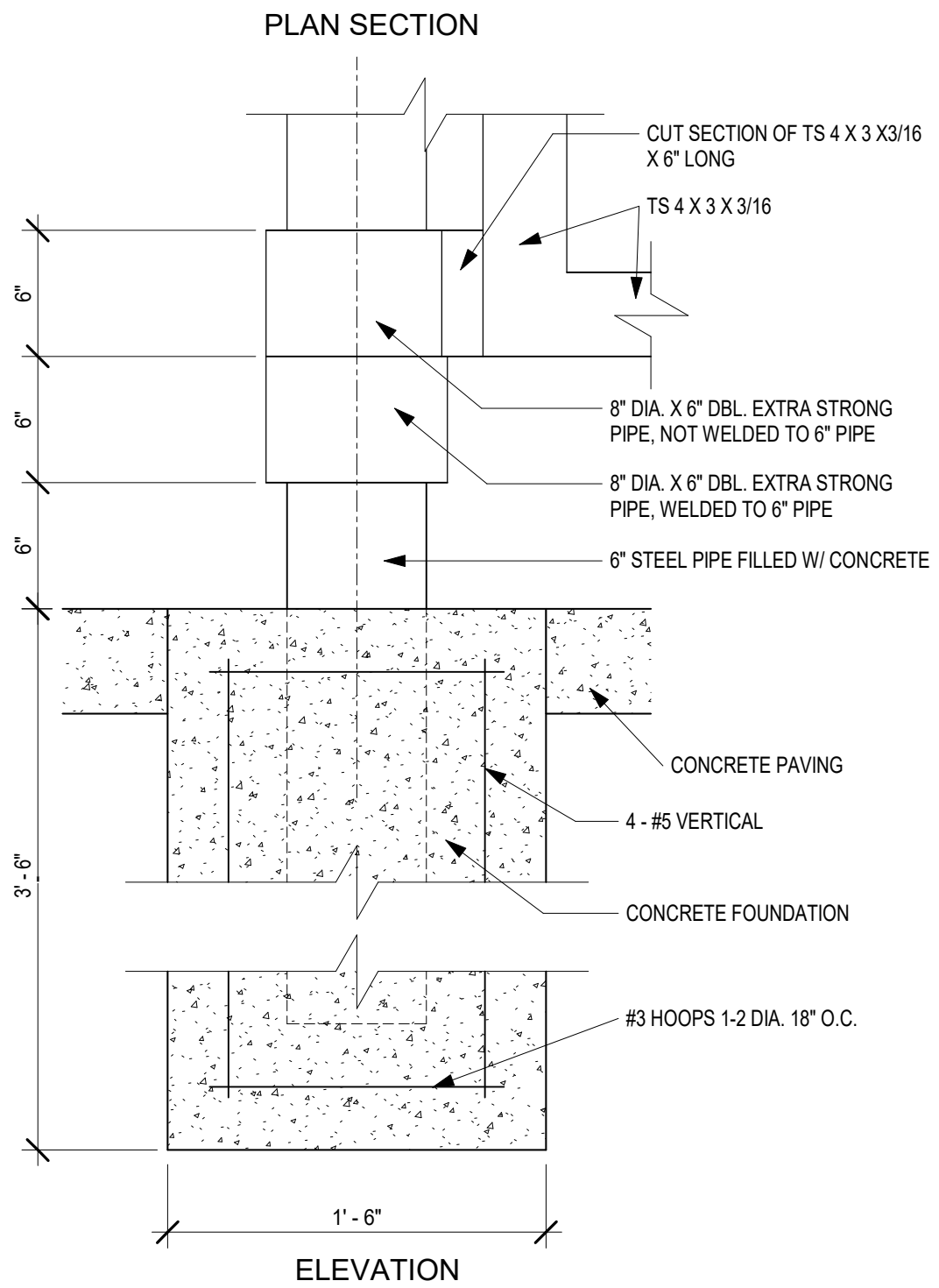
FILEPATH: F:\1\_P\Projects\SDG\190224 Streets of West Pryor - Lot #3\05\_Drawings\Revit\190224 West Pryor Lot 3 V4.rvt  
DATE: 2/17/2020 11:17:19 AM  
DRAWN BY: Author



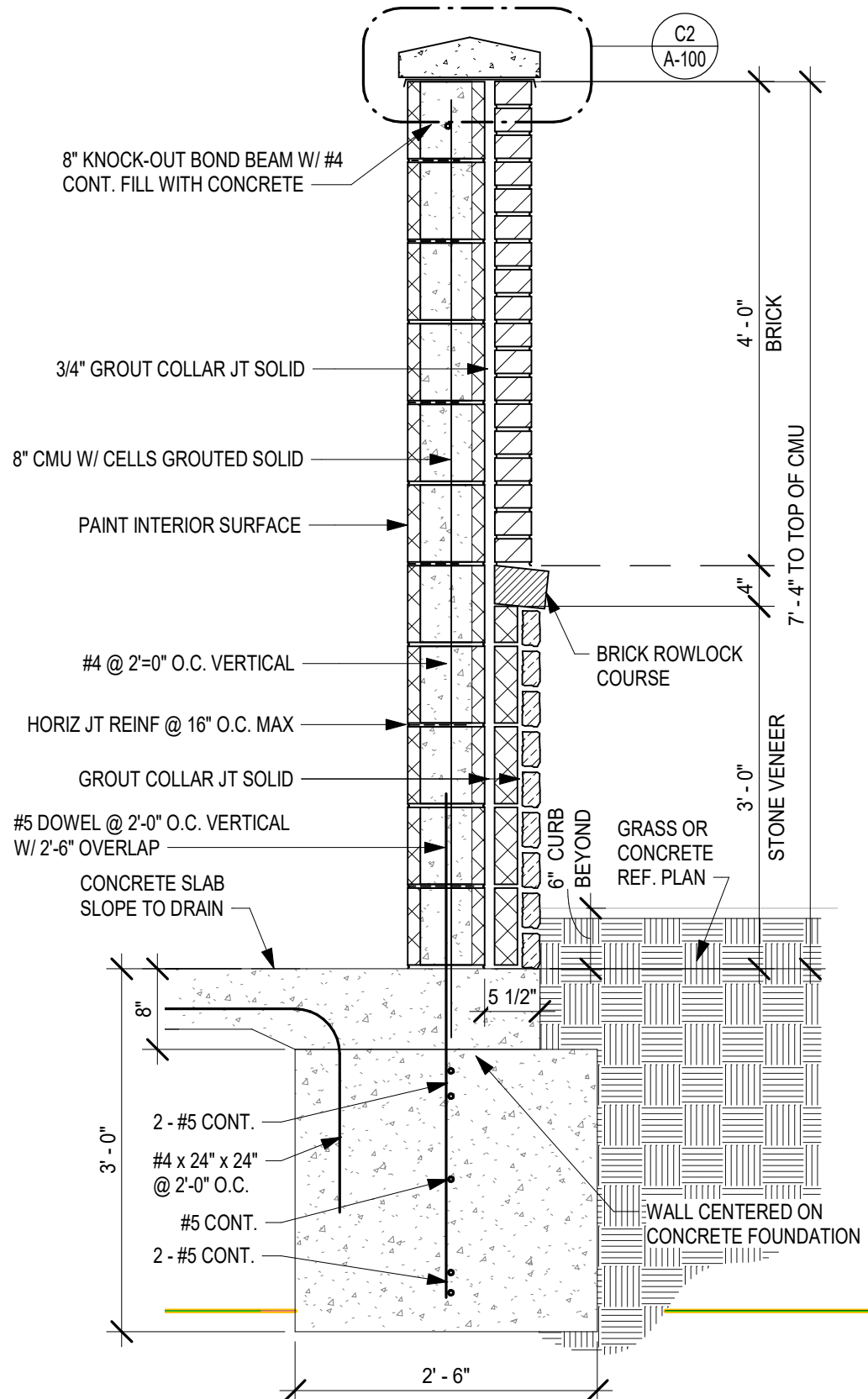
**C1 TRASH ENCLOSURE GATE ELEVATION**  
SCALE: 1/4" = 1'-0"



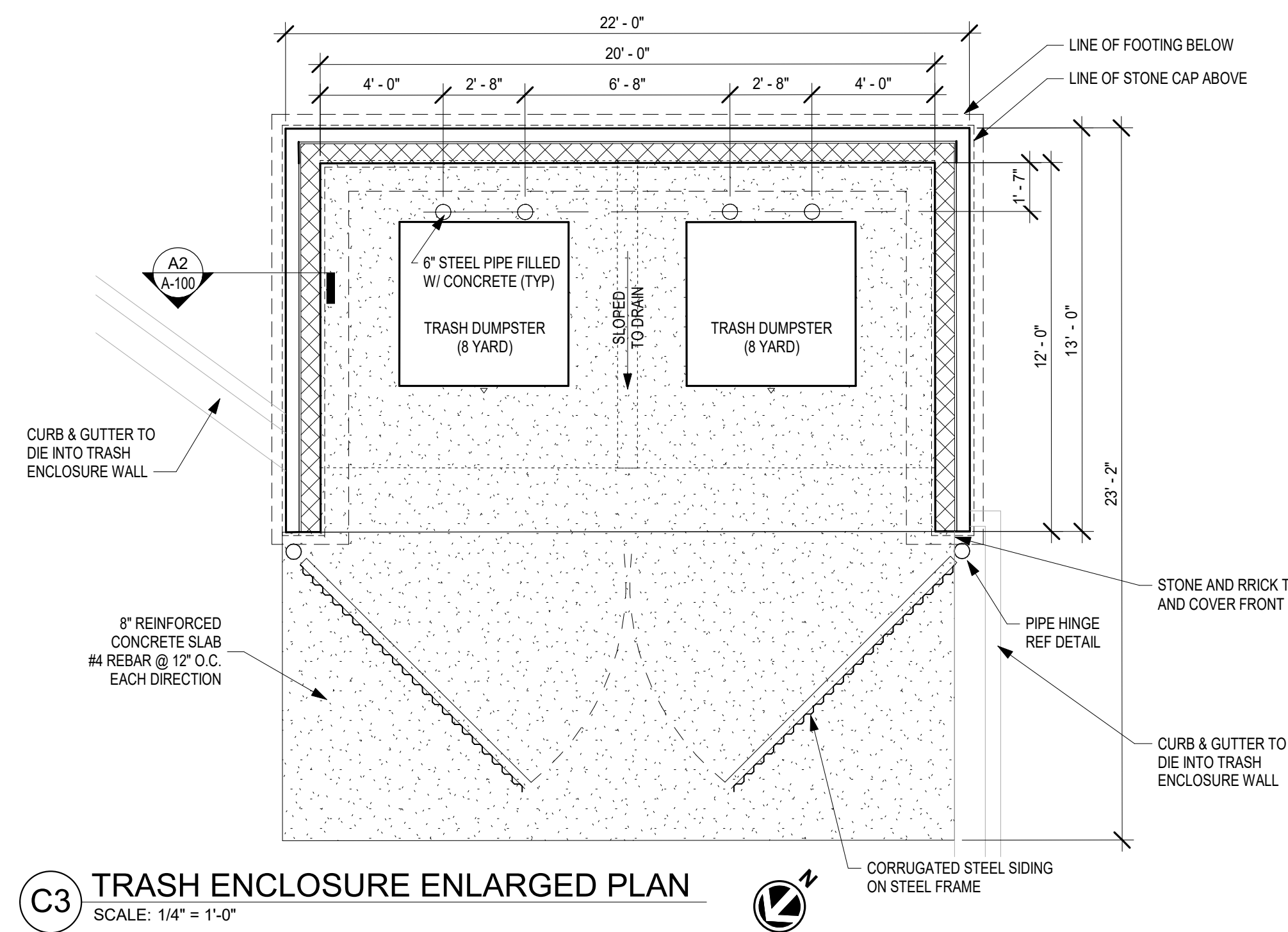
**A1 ENCLOSURE GATE HINGE DETAIL**  
SCALE: 1 1/2" = 1'-0"



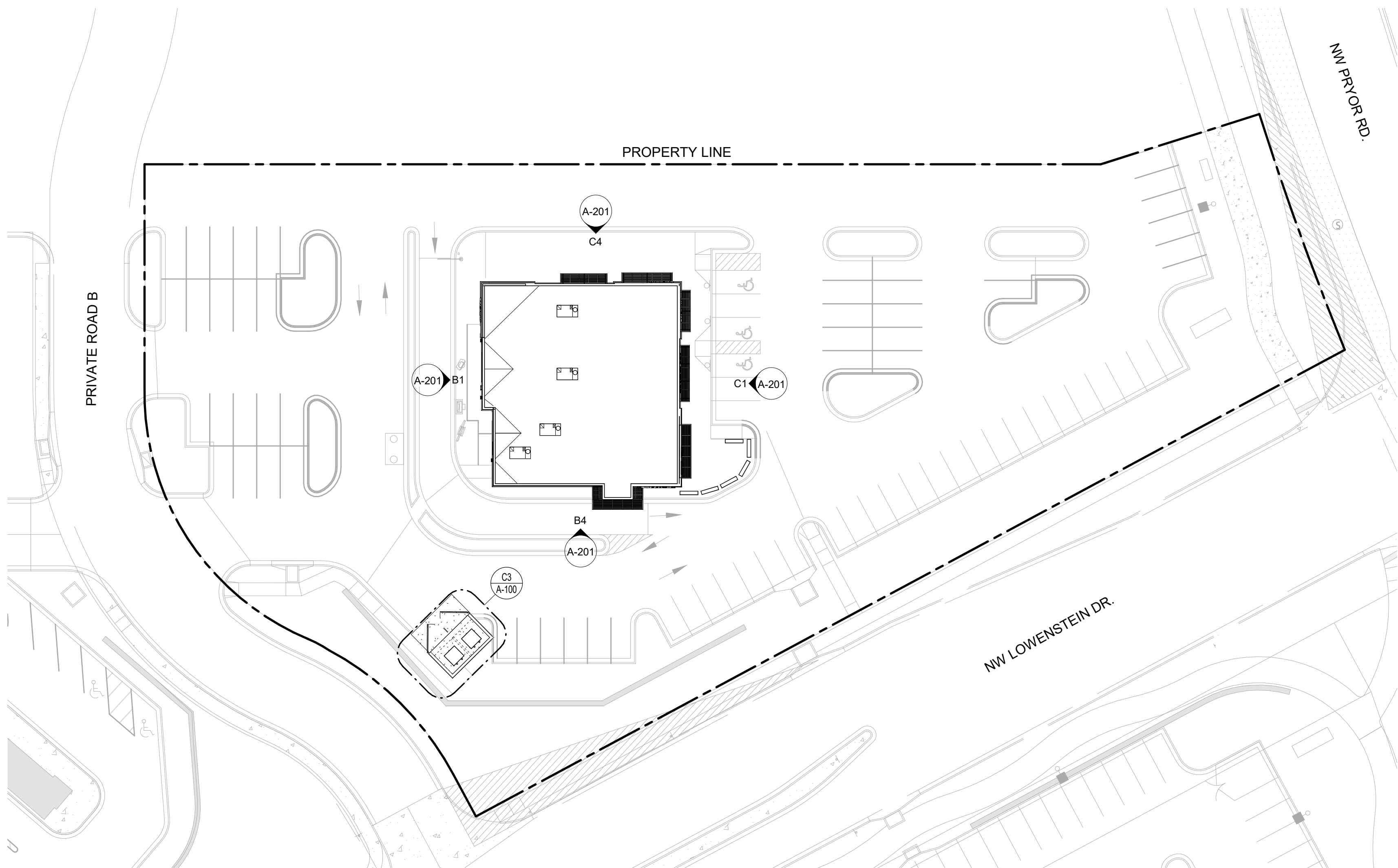
**C2 TRASH ENCLOSURE CAP DETAIL**  
SCALE: 3" = 1'-0"



**A2 TRASH ENCLOSURE WALL SECTION**  
SCALE: 3/4" = 1'-0"



**C3 TRASH ENCLOSURE ENLARGED PLAN**  
SCALE: 1/4" = 1'-0"



**A3 SITE PLAN**  
SCALE: 1" = 30'-0"



**schwerdt design group**  
architecture | interiors | planning

2231 sw wanamaker rd suite 303  
topoka, kansas 66544-4275  
phone: 785.273.7540

SCHWERDT DESIGN GROUP  
MISSOURI STATE CERTIFICATE OF AUTHORITY  
#F0035876

PROGRESS PRINT

NOT FOR  
CONSTRUCTION

DATE: 00/00/00

MICHAEL K. HAMPTON, AIA  
ARCHITECT  
MCA A-200827012

**MULTI-TENANT BUILDING, CORE & SHELL  
STREETS OF WEST PRYOR, LOT 3**  
LEE'S SUMMIT, MO

SUBMISSION DATES  
PROGRESS PRINT ONLY

SHEET TITLE  
SITE PLAN & TRASH  
ENCLOSURE DETAILS

PROJECT NUMBER  
**190224**

SHEET NUMBER  
**A-100**