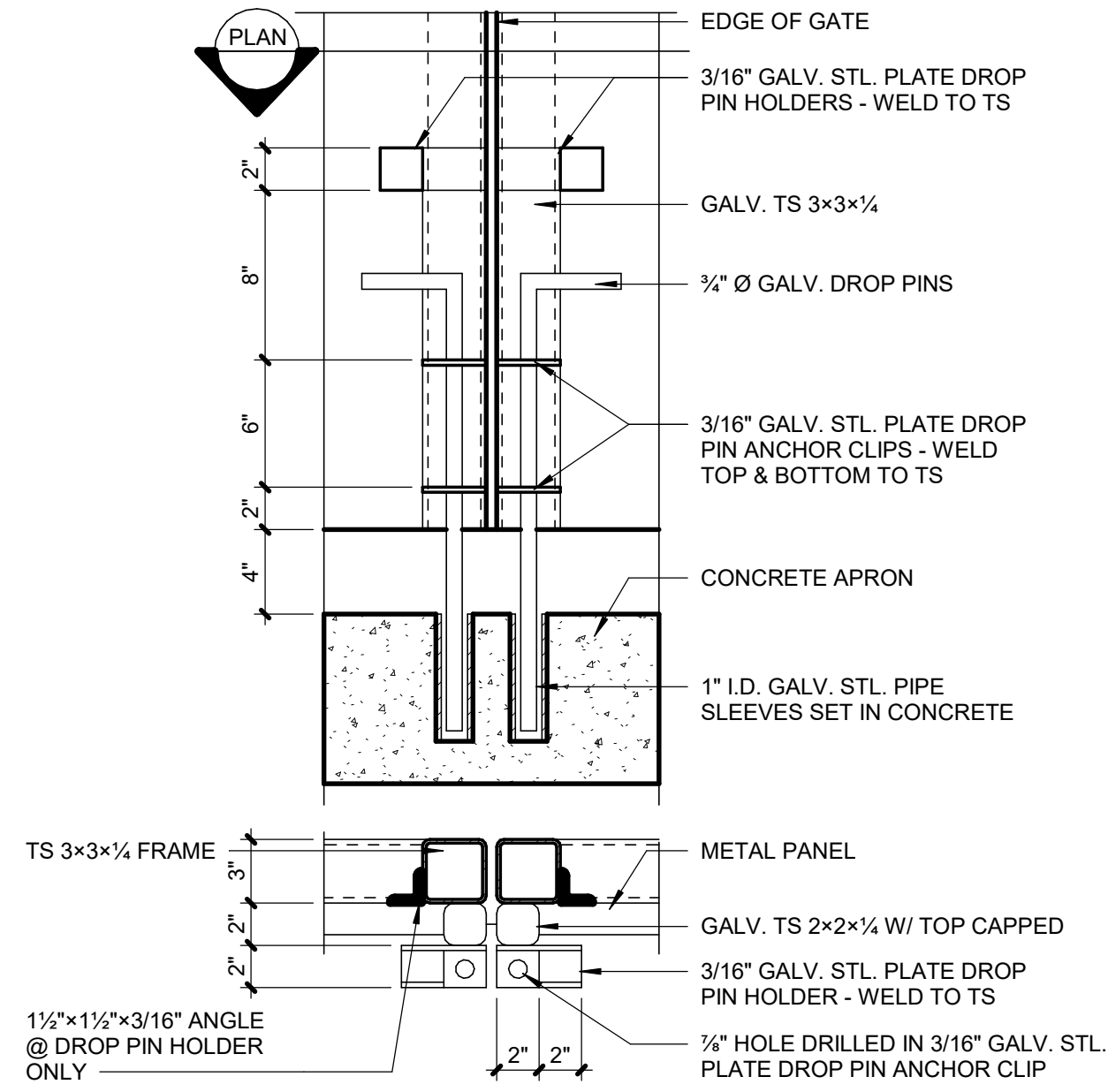
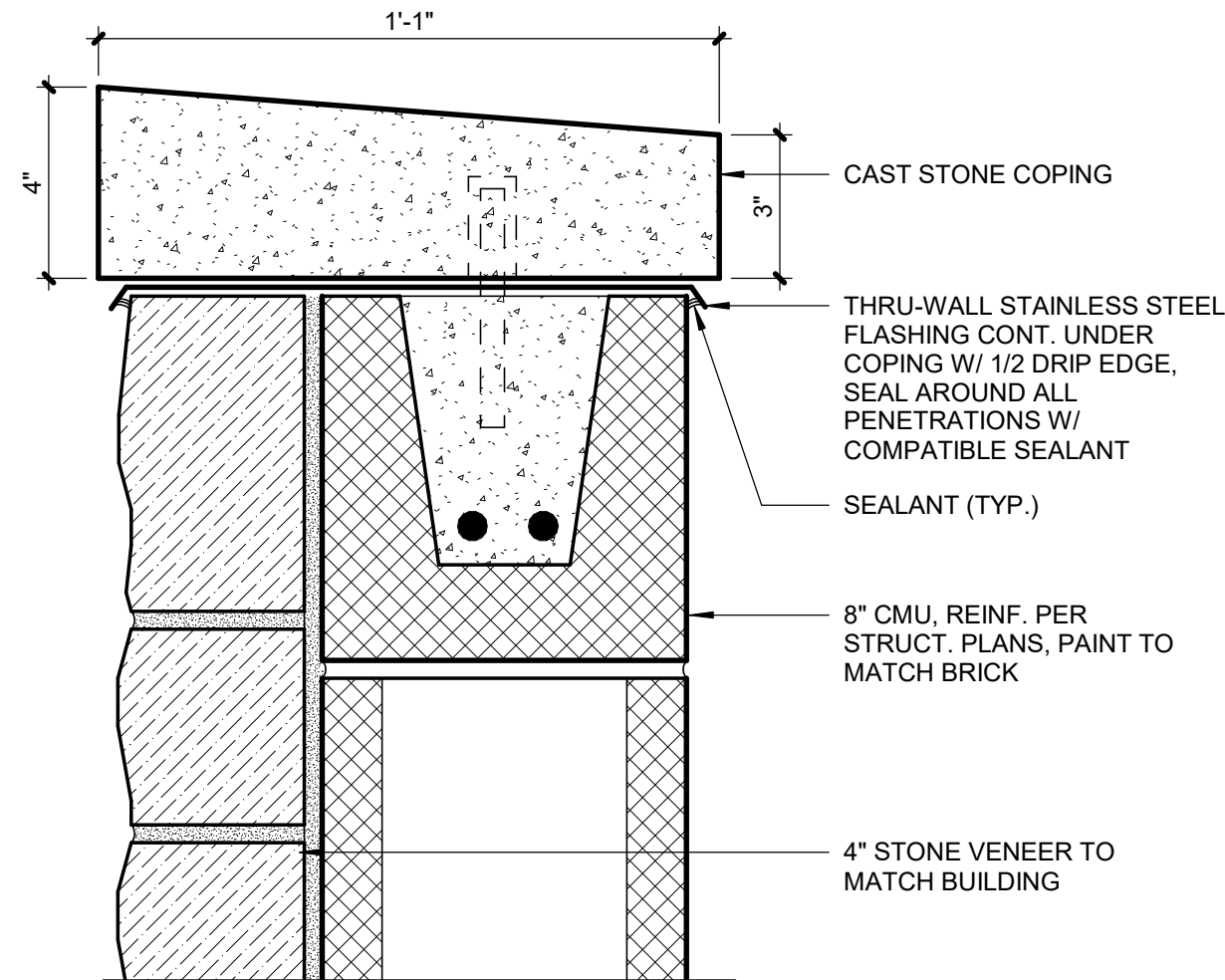


C:\Users\Kmball\Hales\Documents\19035_JourneyChurch_CENTRAL_kimballhales.rvt



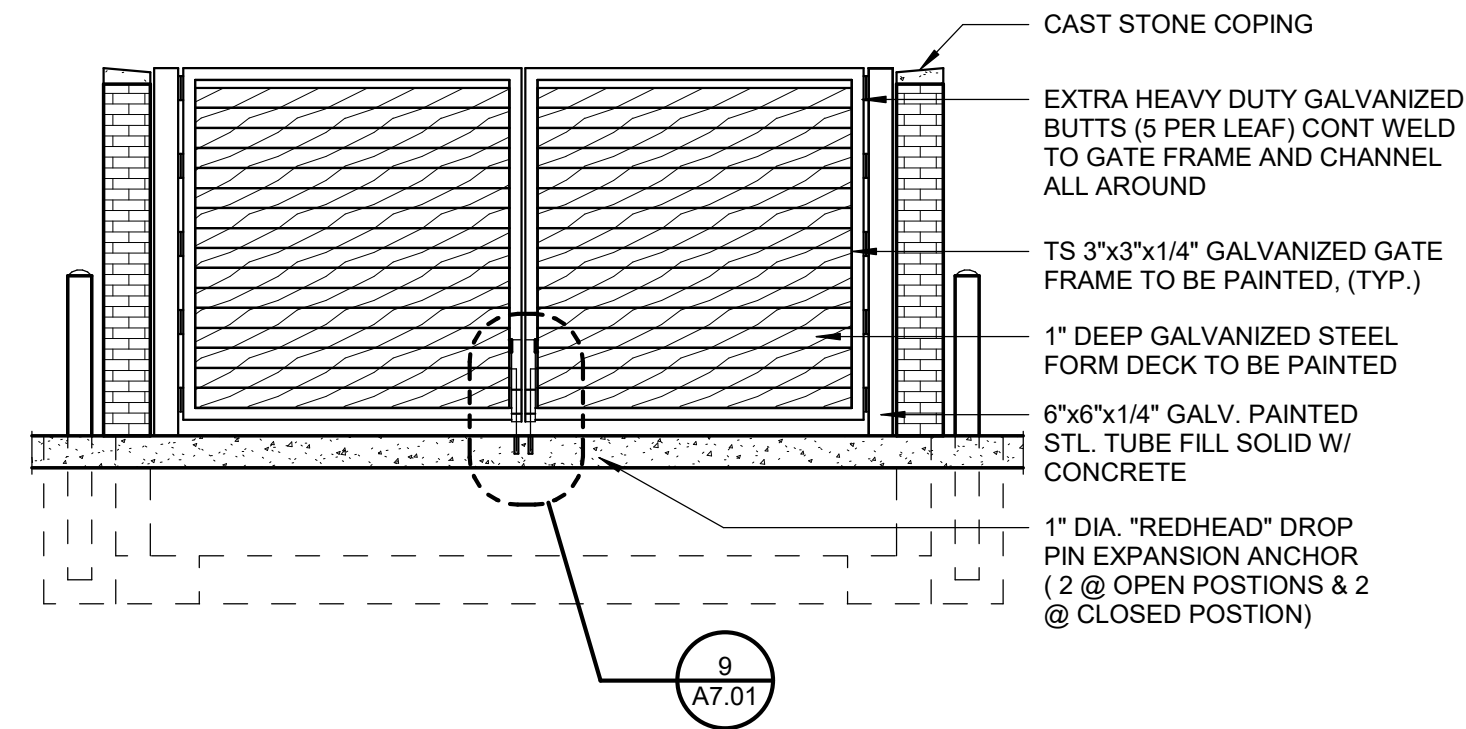
9 DROP PIN DETAILS

A7.01 SCALE : 1 1/2" = 1'-0"



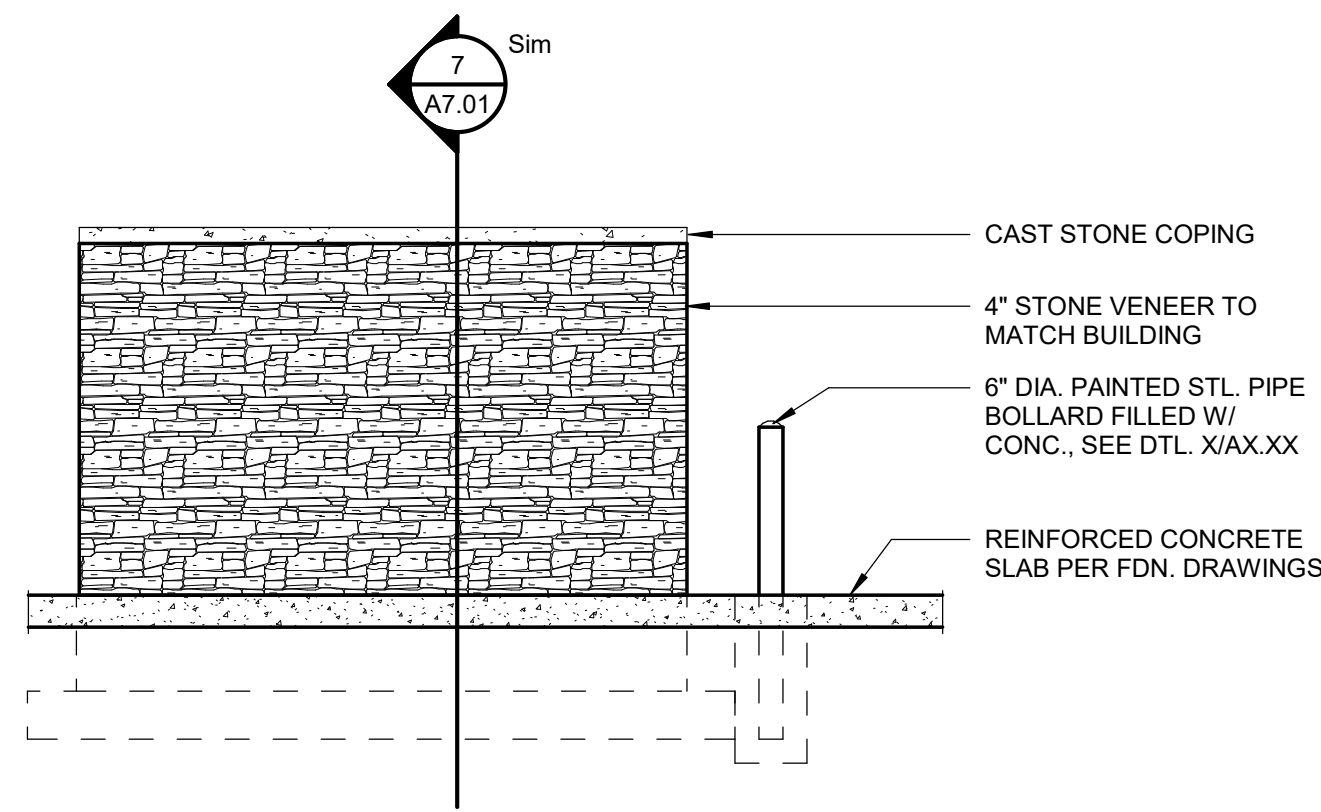
8 COPING DETAIL

A7.01 SCALE : 3" = 1'-0"



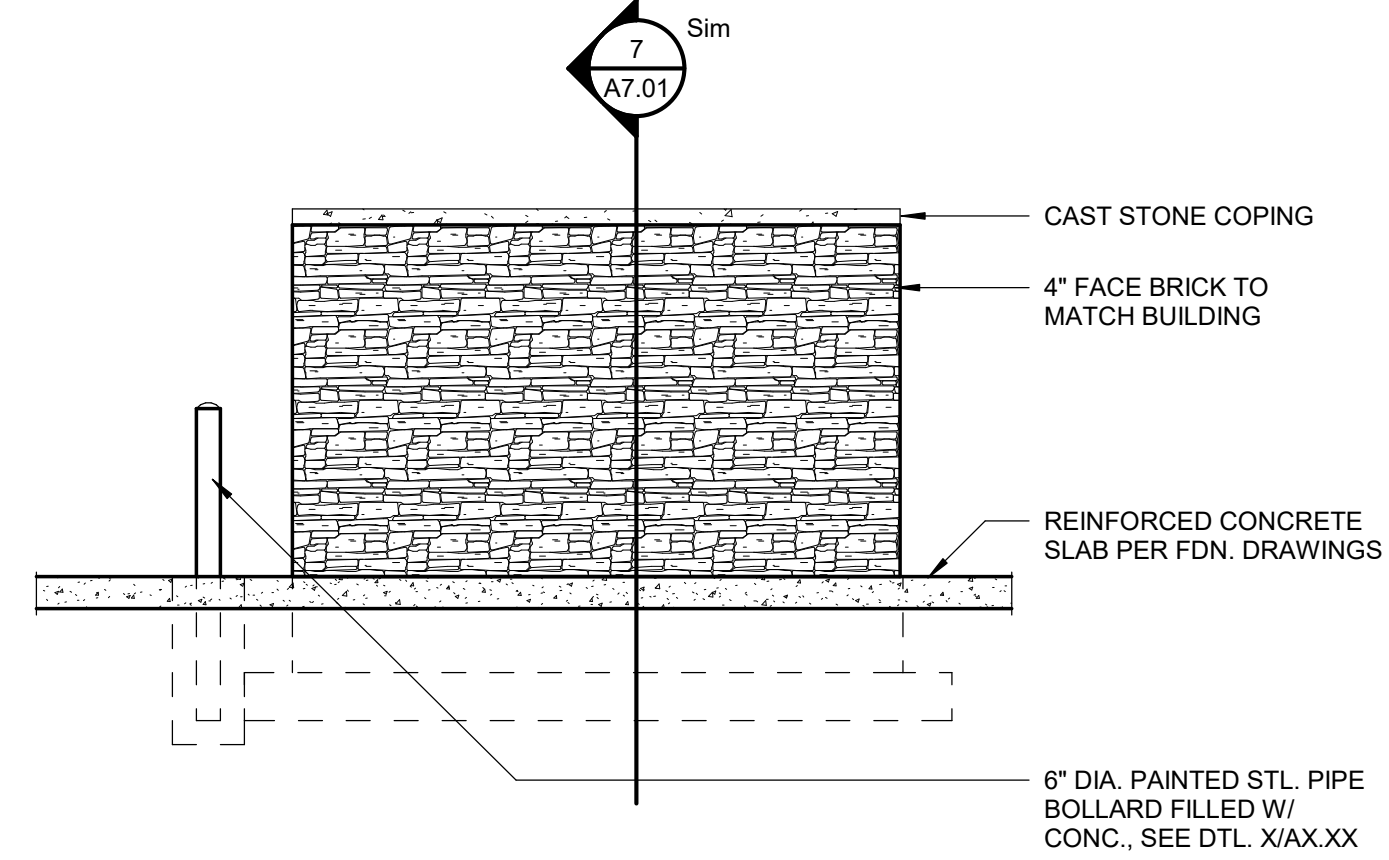
3 TRASH ENCLOSURE- CMU W/ BRICK

A7.01 SCALE : 1/4" = 1'-0"



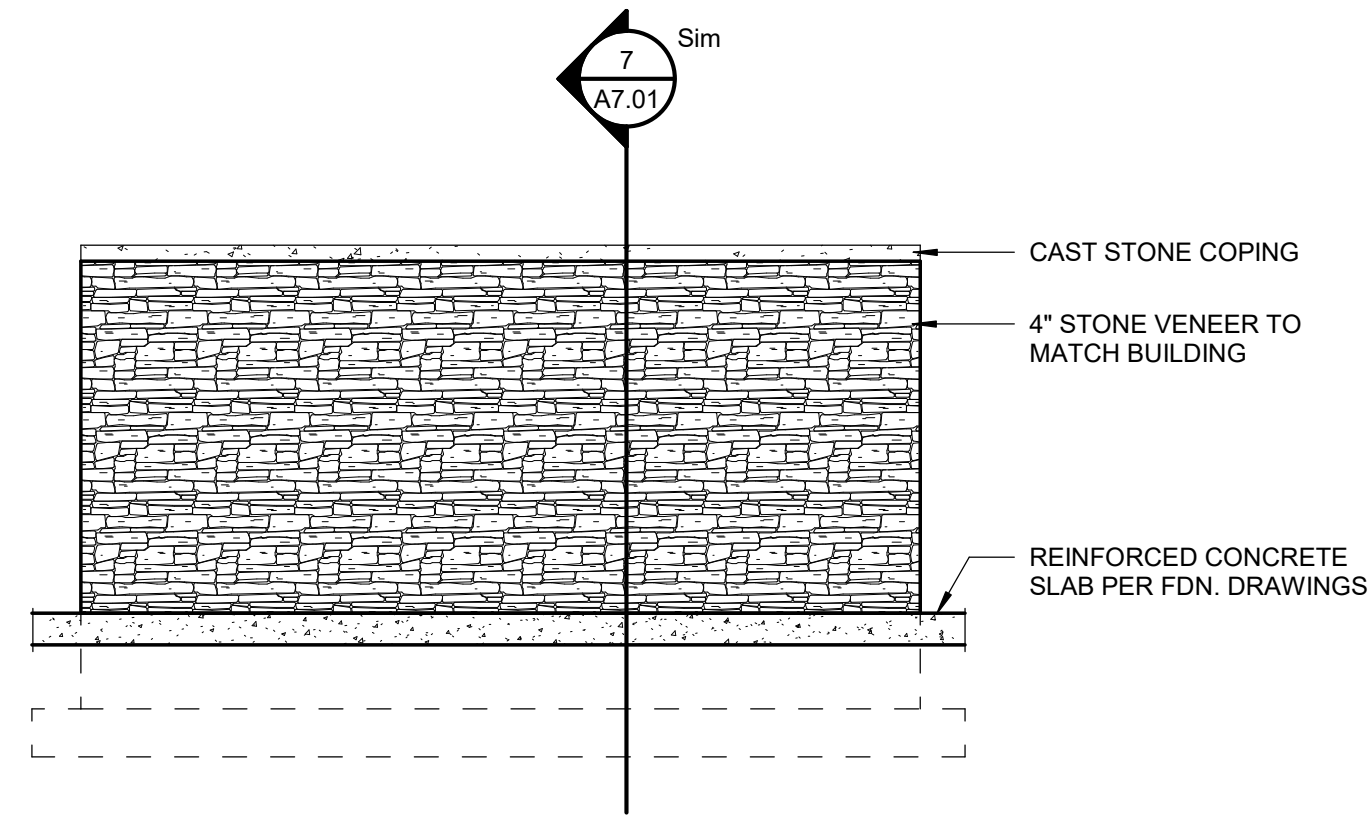
5 TRASH ENCLOSURE- CMU W/ STONE

A7.01 SCALE : 1/4" = 1'-0"



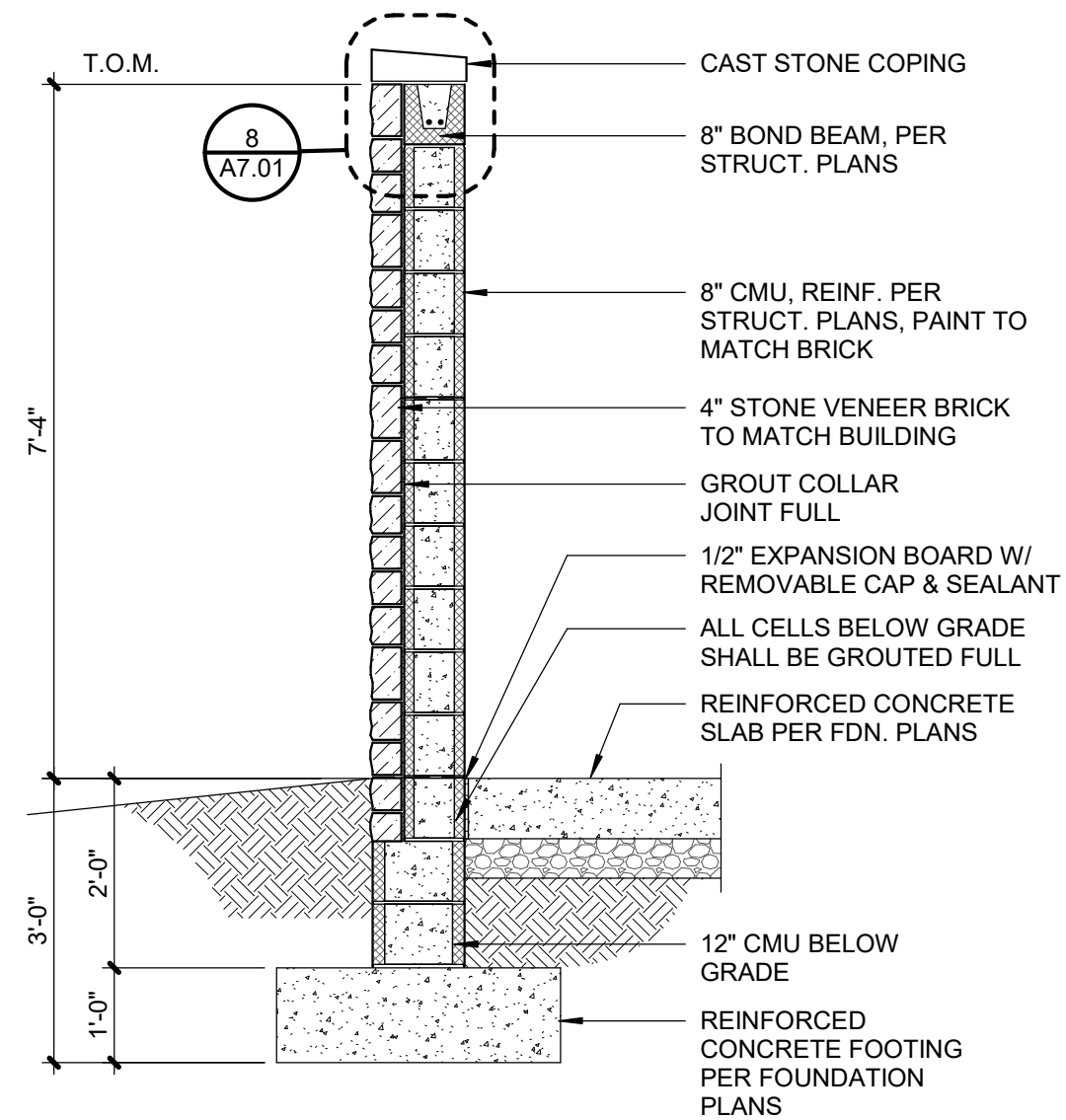
4 TRASH ENCLOSURE- BLOCK W/ STONE

A7.01 SCALE : 1/4" = 1'-0"



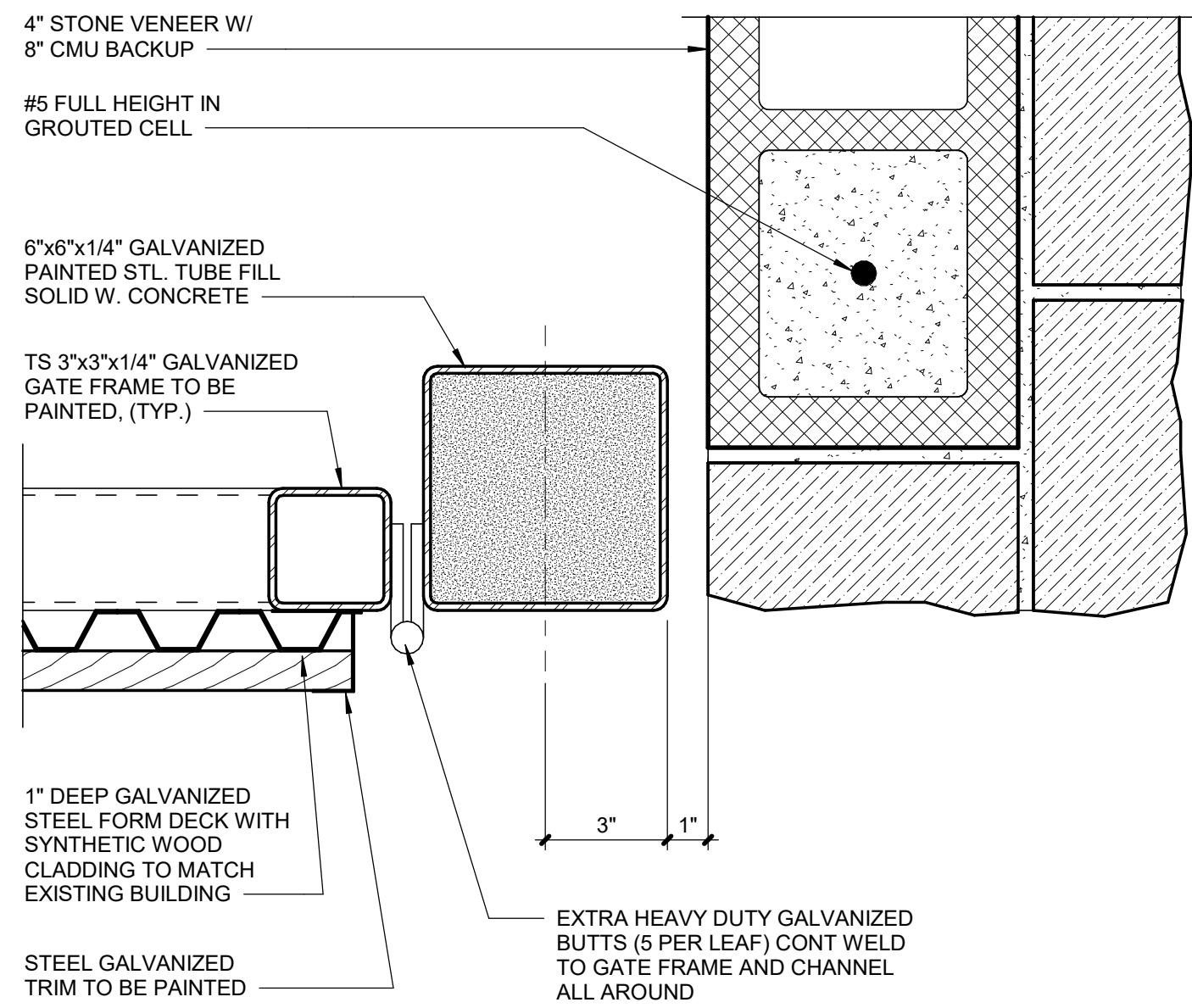
2 TRASH ENCLOSURE- CMU W/ BRICK

A7.01 SCALE : 1/4" = 1'-0"



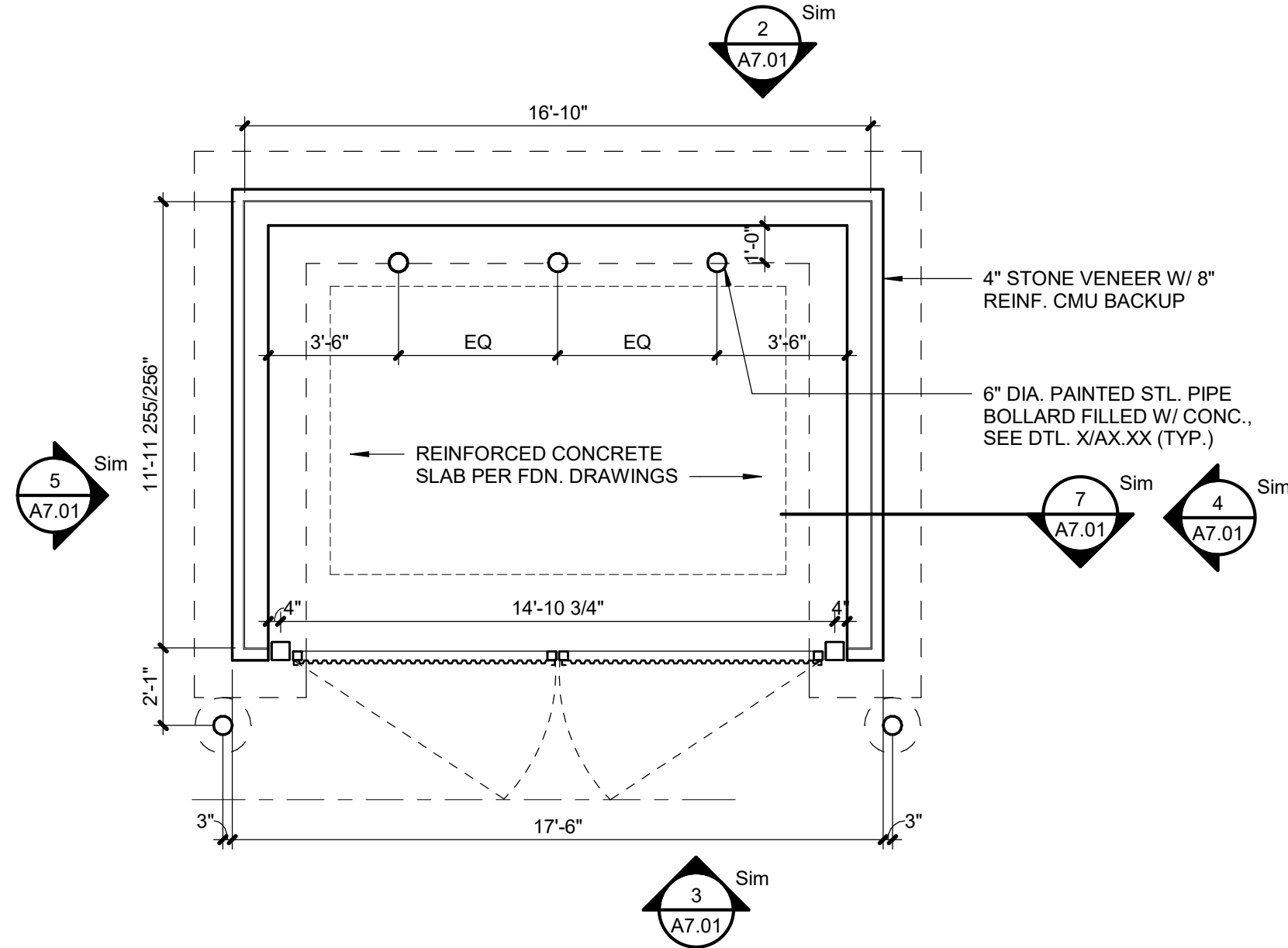
7 WALL SECTION

A7.01 SCALE : 1/2" = 1'-0"



6 JAMB DETAIL

A7.01 SCALE : 3" = 1'-0"



1 TRASH ENCLOSURE- CMU W/ BRICK

A7.01 SCALE : 1/4" = 1'-0"

JOURNEY CHURCH

1601 SW STATE ROUTE 150
LEE'S SUMMIT, MO 64082

Project No.:	19035	
Date:	04.15.2020	
Issued For:	90% DESIGN DEVELOPMENT REVISIONS	
No.	Date	Description

REGISTRATION

NOT FOR CONSTRUCTION

PROJECT TEAM	
ARCHITECT	FINKLE+WILLIAMS ARCHITECTURE
CIVIL	BHC RHODES
LANDSCAPE	MEIER CONSULTING
FOUNDATIONS	STAND STRUCTURAL ENGINEERING
STRUCTURAL	STAND STRUCTURAL ENGINEERING
PLUMBING	LANKFORD FENDLER & ASSOCIATES
MECHANICAL	LANKFORD FENDLER & ASSOCIATES
ELECTRICAL	LANKFORD FENDLER & ASSOCIATES
FIRE PROTECTION	FIRE PROTECTION
CONTRACTOR	GC

FINKLE + WILLIAMS
ARCHITECTURE

7007 College Blvd, Suite 415
Overland Park, Kansas 66211
913+498-1550

SHEET TITLE
DETAILS - TRASH ENCLOSURE
SHEET NUMBER

A7.01