

# ACI BOLAND ARCHITECTS

1710 Wyandotte  
Kansas City, MO 64108  
T: 816.763.9600  
ACI/Boland, Inc.  
Kansas City | St. Louis  
Licensee's Certificate of Authority Number:

**CIVIL CONSULTANT**  
McClure Engineering Company  
1700 Swift Ave., Suite 100  
North Kansas City, MO 64116  
Phone Number: 816.756.0444  
Licensee's Certificate of Authority Number:

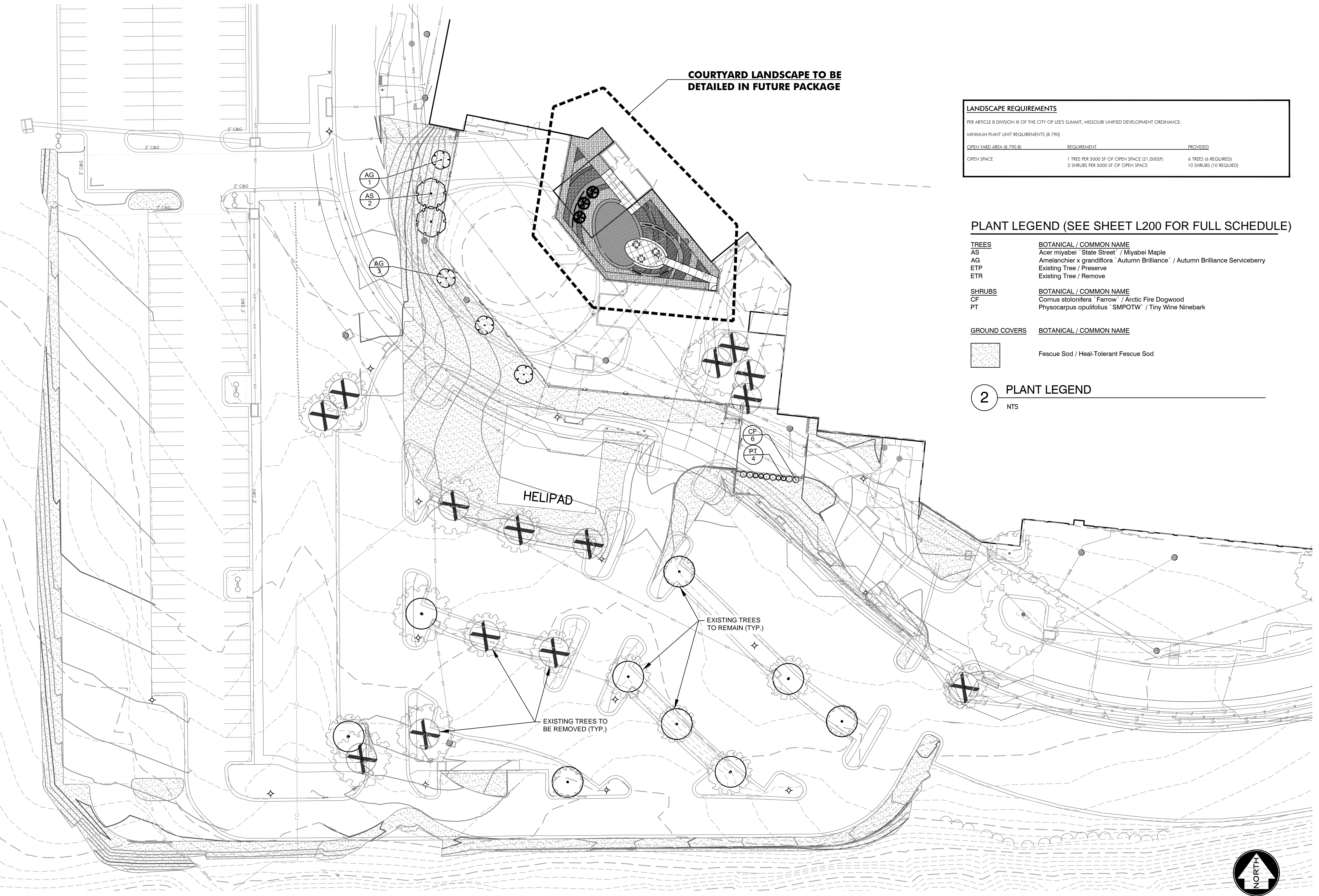
**STRUCTURAL CONSULTANT**  
Structural Engineering Associates  
1000 Walnut Street, Suite 1570  
Kansas City, MO 64106  
Phone Number: 816.421.1042  
Licensee's Certificate of Authority Number:

**MEP CONSULTANT**  
W.L. Cassell & Associates, Inc.  
1600 Baltimore, Suite 300  
Kansas City, MO 64108  
Phone Number: 816.842.8437  
Licensee's Certificate of Authority Number:

## Saint Luke's East Hospital Flex Facility Expansion 100 NE Saint Luke's Blvd Lee's Summit, MO 64086 Construction Documents

Date: 2.21.2020  
Job Number: 3-19092  
Drawn By: AID  
Checked By: GMP

Number	Date	Description
3	04.03.2020	City Comments #2 & PR #1



**1** OVERALL LANDSCAPE PLAN  
1" = 30'

**LANDSCAPE REQUIREMENTS**  
PER ARTICLE 8 DIVISION III OF THE CITY OF LEE'S SUMMIT, MISSOURI UNIFIED DEVELOPMENT ORDINANCE:  
MINIMUM PLANT UNIT REQUIREMENTS (8,790)

OPEN YARD AREA (8,790 B)	REQUIREMENT	PROVIDED
OPEN SPACE	1 TREE PER 5000 SF OF OPEN SPACE (21,000SF) 2 SHRUBS PER 5000 SF OF OPEN SPACE	6 TREES (6 REQUIRED) 10 SHRUBS (10 REQUIRED)

### PLANT LEGEND (SEE SHEET L200 FOR FULL SCHEDULE)

**TREES**

CODE	BOTANICAL / COMMON NAME
AS	Acer miyabei 'Slate Street' / Miyabei Maple
AG	Amelanchier x grandiflora 'Autumn Brilliance' / Autumn Brilliance Serviceberry
ETR	Existing Tree / Preserve
ETR	Existing Tree / Remove

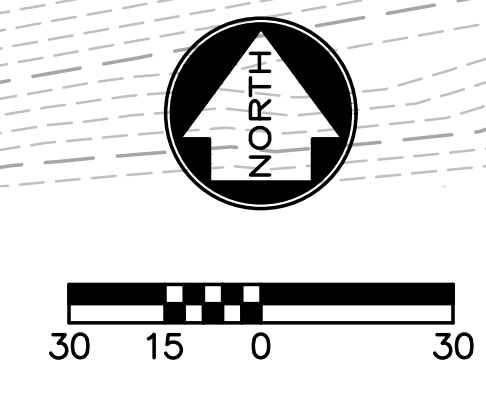
**SHRUBS**

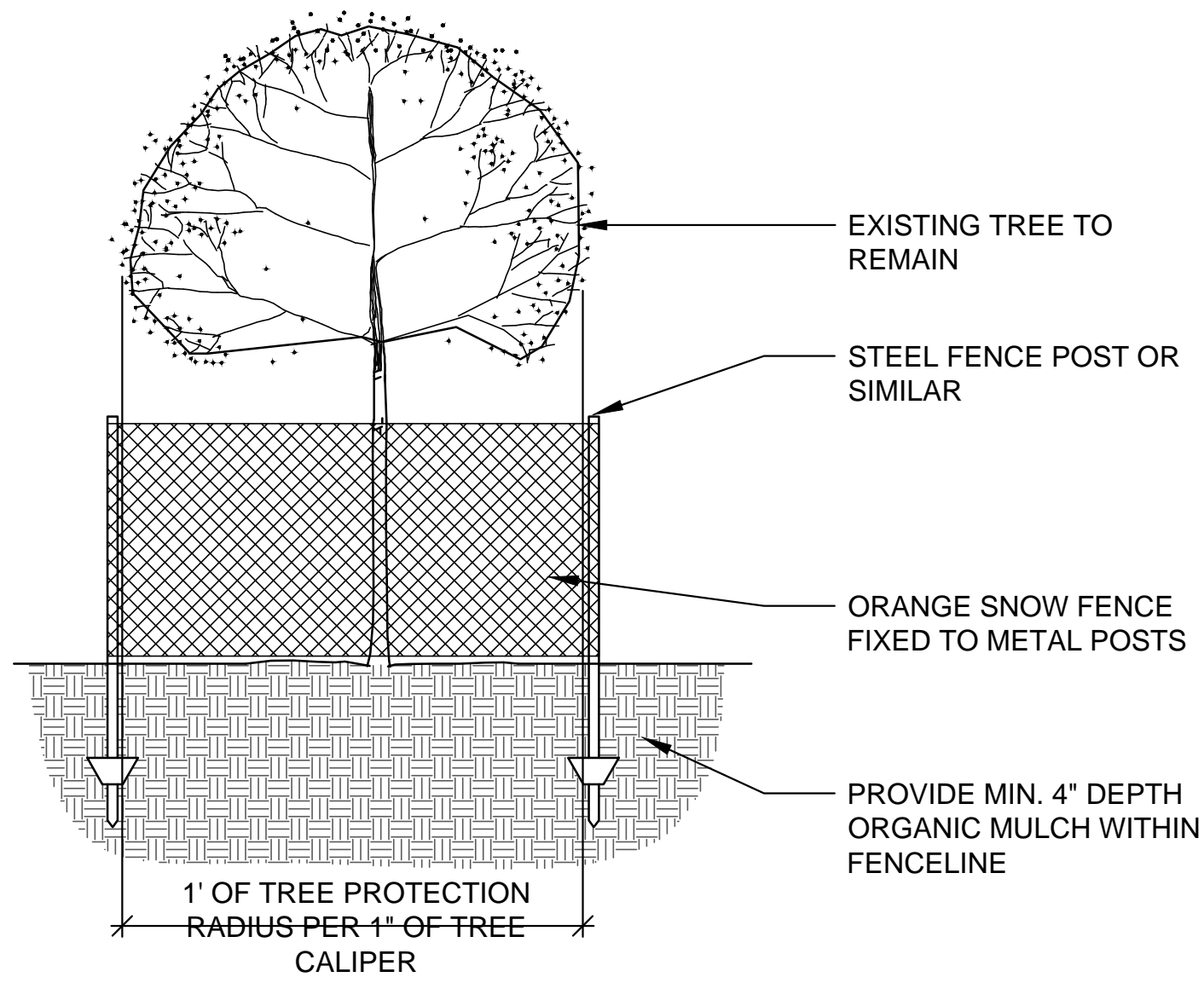
CODE	BOTANICAL / COMMON NAME
CF	Cornus stolonifera 'Farrow' / Arctic Fire Dogwood
PT	Physocarpus opulifolius 'SMPOTW' / Tiny Wine Ninebark

**GROUND COVERS**

CODE	BOTANICAL / COMMON NAME
[Pattern]	Fescue Sod / Heal-Tolerant Fescue Sod

### 2 PLANT LEGEND NTS

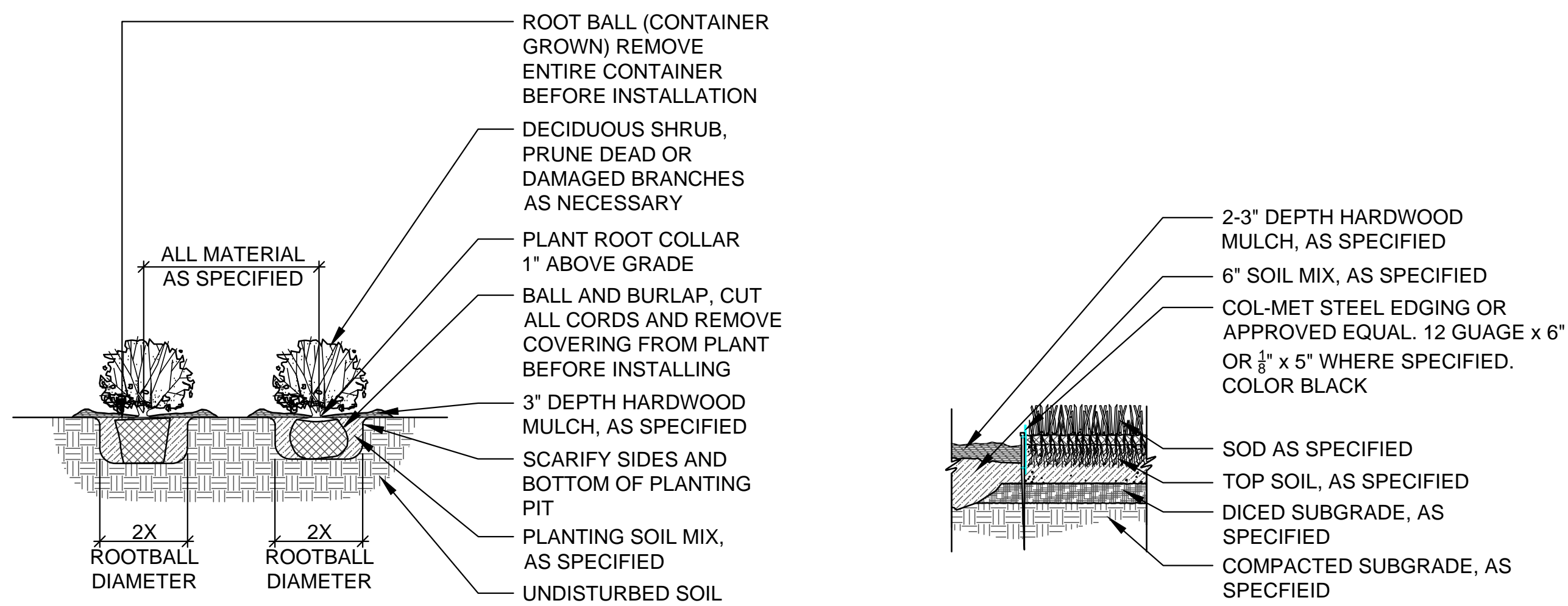




**6 TREE PROTECTION**

1/2" = 1'-0"

000101-05



**4 SHRUB AND PERENNIAL PLANTING**

1/2" = 1'-0"

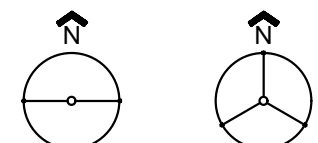
329333-04

**5 METAL EDGING**

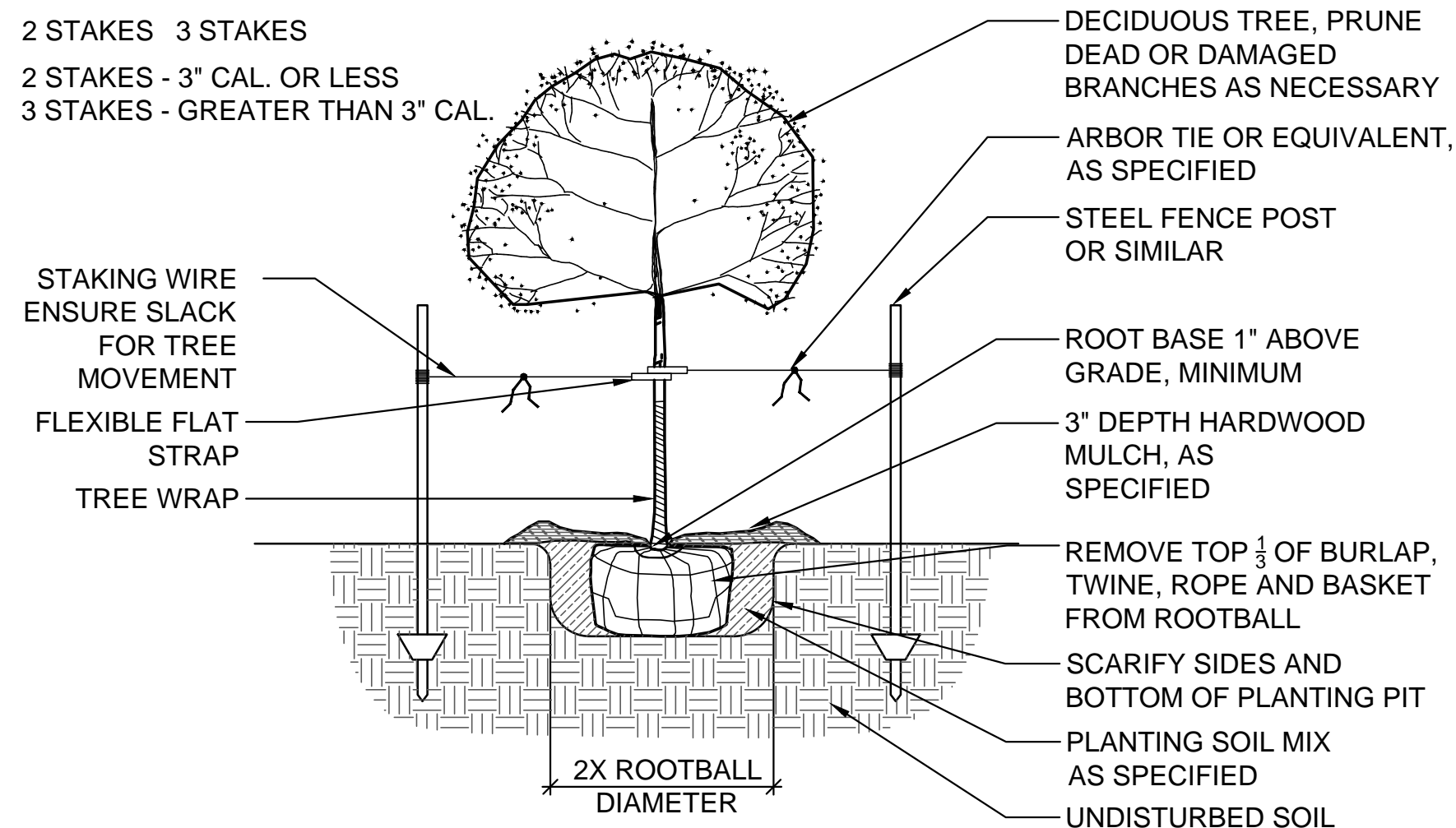
1" = 1'-0"

329413.23-08

**STAKING ORIENTATION**



- 2 STAKES 3 STAKES
- 2 STAKES - 3" CAL. OR LESS
- 3 STAKES - GREATER THAN 3" CAL.



**1 DECIDUOUS TREE PLANTING**

1/2" = 1'-0"

329343.02-01

**PLANT SCHEDULE**

TREES	CODE	QTY	BOTANICAL / COMMON NAME	CONT	CAL
	AS	2	Acer miyabei 'State Street' / Miyabei Maple	B & B	3"Cal
	AG	4	Amelanchier x grandiflora 'Autumn Brilliance' / Autumn Brilliance Serviceberry	B & B	3"Cal
	ETP	9	Existing Tree / Preserve	15 gal	
	ETR	14	Existing Tree / Remove	Existing	
SHRUBS	CODE	QTY	BOTANICAL / COMMON NAME	CONT	
	CF	6	Cornus stolonifera 'Farrow' / Arctic Fire Dogwood	1 gal	
	PT	4	Physocarpus opulifolius 'SMPOTW' / Tiny Wine Ninebark	1 gal	
GROUND COVERS	CODE	QTY	BOTANICAL / COMMON NAME	CONT	
	FH	156,166	Fescue Sod / Heal-Tolerant Fescue Sod	SF	

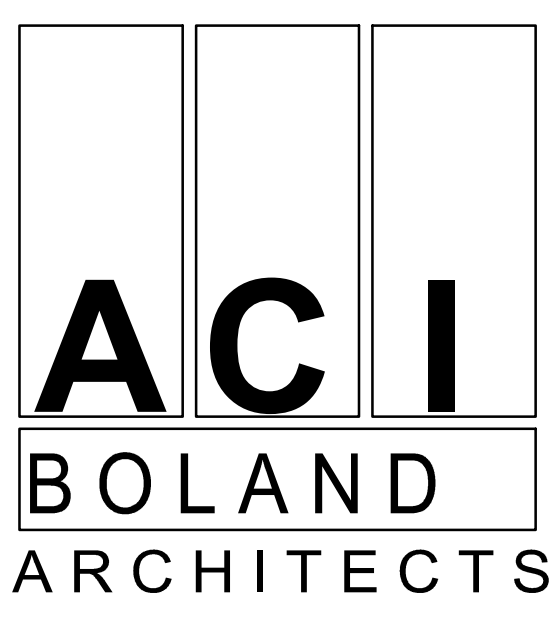
**2 PLANT SCHEDULE**

NTS

- LANDSCAPE PLAN NOTES:**
- THE CONTRACTOR SHALL DETERMINE THE EXACT LOCATION OF ALL EXISTING UNDERGROUND AND OVERHEAD UTILITIES, IRRIGATION PIPING AND DRAINAGE STRUCTURES BEFORE COMMENCING WORK. INFORMATION SHOWN ON PLAN IS FROM AVAILABLE INFORMATION AND ALL LOCATIONS SHOWN SHOULD BE CONSIDERED APPROXIMATE. THE CONTRACTOR AGREES TO BE FULLY RESPONSIBLE FOR ANY AND ALL DAMAGE TO ANY OF THE PREVIOUSLY LISTED ITEMS.
  - CONTRACTOR SHALL VERIFY ALL PLANT MATERIAL QUANTITIES PRIOR TO PLANTING. ANY DISCREPANCIES WITH THE PLAN SHALL BE BROUGHT TO THE ATTENTION OF THE LANDSCAPE ARCHITECT. THE PLAN QUANTITIES SHALL SUPERCEDE SCHEDULED QUANTITIES.
  - CONTRACTOR SHALL VERIFY ALL PLANT QUANTITIES SHOWN PRIOR TO PLANTING. QUANTITIES PROVIDED ARE FOR CONVENIENCE ONLY AND CONTRACTOR IS RESPONSIBLE FOR VERIFYING AND INSTALLING THE QUANTITY OF PLANT MATERIALS SHOWN ON THE PLANS. ANY DISCREPANCIES SHALL BE REPORTED TO THE LANDSCAPE ARCHITECT. ALL PLANT MATERIAL TO BE SPACED AS SHOWN, UNLESS OTHERWISE NOTED.
  - LOCATION AND PLACEMENT OF ALL PLANT MATERIAL SHALL BE STAKED OR LAID OUT IN THE FIELD AND APPROVED BY THE LANDSCAPE ARCHITECT PRIOR TO INSTALLATION.
  - NO SUBSTITUTION (INCL. CULTIVARS) SHALL BE ACCEPTED WITHOUT WRITTEN AUTHORIZATION FROM THE LANDSCAPE ARCHITECT PRIOR TO PLANTING.
  - ALL PLANT MATERIAL SHALL BE OF EXCELLENT QUALITY, FREE OF DISEASE & INFESTATION-TRUE TO TYPE, VARIETY, SIZE SPECIFIED, & FORM PER ANSA STANDARDS.
  - ALL TREES & MULCH BEDS (UNLESS ROCK MULCH) SHALL RECEIVE 3" MIN. OF SHREDDED DARK BROWN PREMIUM HARDWOOD MULCH, AS DETAILED. ADD PREEN OR SNAPSHOT TO BEDS BEFORE & AFTER MULCHING FROM MARCH 1 TO OCTOBER 1. IF WINTER INSTALLATION, RETURN NEXT SPRING & INSTALL PREEN/SNAPSHOT WITH NEW MULCH.
  - TREE TIES SHALL BE DEWITT 20" STRAPS FOR TREE STAKING. USE 10 GAUGE ELECTRIC WIRE. TREES AND STAKES SHALL BE STRAIGHT, PLUMB AND TALL. TREE STAKES TO BE REMOVED WINTER OF YEAR 2 AFTER INSTALLATION.
  - CONTRACTOR SHALL THOROUGHLY WATER-IN EACH PLANT IMMEDIATELY FOLLOWING INSTALLATION AND CONTINUE WATERING UNTIL SUBSTANTIAL COMPLETION. CONTRACTOR REQUIRED TO COORDINATE WATERING WITH THE OWNER AFTER SUBSTANTIAL COMPLETION.
  - ALL AREAS OF THE SITE DISTURBED DURING CONSTRUCTION THAT ARE NOT DESIGNATED AS BEDS / PAVEMENT AREAS SHALL BE SODDED WITH 90% TURF-TYPE TALL FESCUE AND 10% BLUEGRASS MIX SOD.
  - ALL LANDSCAPED AND TURF AREAS SHALL BE IRRIGATED WITH AN AUTOMATED SYSTEM. THE CONTRACTOR SHALL PROVIDE A DESIGN TO COVER THE NEW LANDSCAPE AREAS WITH HEAD TO HEAD COVERAGE. ONLY RAINBIRD OR HUNTER IRRIGATION PARTS & EQUIPMENT ARE TO BE USED. DRIP IS PERMITTED. THE DESIGN SHALL PROVIDE ALL PIPES, HEADS, VALVES, CONTROLLER, WIRE, AND SLEEVES. SLEEVES SHALL BE INSTALLED BY THE GENERAL CONTRACTOR AND COORDINATED WITH THE LANDSCAPE / IRRIGATION CONTRACTOR. 4" PVC SLEEVES RECOMMENDED. PLACE SLEEVES AND MARK CLEARLY ABOVE GROUND FOR EASE OF FINDING. COORDINATE BACKFLOW TAP & METER WITH THE GENERAL CONTRACTOR (GC) AND THE GC'S LICENSED PLUMBER. THE IRRIGATION DESIGN / SUBMITTALS SHALL BE SUBMITTED TO THE OWNER AND OWNER'S REPRESENTATIVE & LA FOR APPROVAL PRIOR TO ORDERING OR INSTALLING ANY MATERIALS FOR THE IRRIGATION SYSTEM. GC SHALL MAKE SURE THAT THE METER & BACKFLOW ARE COVERED IN THE BID, AS THE IRRIGATION CONTRACTOR IS LIKELY TO EXCLUDE THESE ITEMS FROM THE IRRIGATION BED. COORDINATE THESE ITEMS AND SLEEVES.
  - NO TREES SHALL BE PLANTED OVER TOP OF ANY UTILITY LINES OR PIPES. CONTRACTOR SHALL VERIFY ALL UTILITY LOCATIONS PRIOR TO PLANTING AND ANY MODIFICATIONS TO TREE LOCATIONS SHALL BE COORDINATED WITH THE LANDSCAPE ARCHITECT AND APPROVED BY THE CITY PRIOR TO PLANTING.
  - ALL PLANT MATERIALS AND IRRIGATION SYSTEM SHALL BE GUARANTEED FOR 1 YEAR FROM DATE OF SUBSTANTIAL COMPLETION, UNLESS OTHERWISE INDICATED IN THE SPECIFICATIONS. PLANT MATERIALS WILL BE ONE-TIME REPLACEMENT AND RECORDS KEPT BY THE LANDSCAPE CONTRACTOR FOR ALL REPLACEMENTS.
  - CONTRACTOR SHALL REPORT SUBSURFACE SOIL OR DRAINAGE PROBLEMS TO THE LANDSCAPE ARCHITECT.
  - THIS LANDSCAPE PLAN IS DESIGNED TO BE IN CONFORMANCE WITH THE LEE'S SUMMIT UNIFIED DEVELOPMENT ORDINANCE. THE LANDSCAPE ARCHITECT WILL COORDINATE CLOSELY WITH THE CITY OF LEE'S SUMMIT, MISSOURI TO MAKE SURE FINAL DEVELOPMENT AND PERMIT PLANS ARE IN CONFORMANCE WITH THIS CODE.

**3 GENERAL NOTES**

NTS



1710 Wyandotte  
Kansas City, MO 64108  
T: 816.763.9000  
ACI/Boland, Inc.  
Kansas City | St. Louis  
Licensee's Certificate of Authority Number:

**CIVIL CONSULTANT**

McClure Engineering Company  
1700 Swift Ave., Suite 100  
North Kansas City, MO 64116  
Phone Number: 816.756.0444  
Licensee's Certificate of Authority Number:

**STRUCTURAL CONSULTANT**

Structural Engineering Associates  
1000 Walnut Street, Suite 1570  
Kansas City, MO 64106  
Phone Number: 816.421.1042  
Licensee's Certificate of Authority Number:

**MEP CONSULTANT**

W.L. Cassell & Associates, Inc.  
1600 Baltimore, Suite 300  
Kansas City, MO 64108  
Phone Number: 816.842.8437  
Licensee's Certificate of Authority Number:

**Saint Luke's East Hospital  
Flex Facility Expansion  
100 NE Saint Luke's Blvd  
Lee's Summit, MO 64086  
Construction Documents**

Date	2.21.2020
Job Number	3-19092
Drawn By	AJD
Checked By	GMP

Number	Date	Description
3	04.03.2020	City Comments #2 & PR #1