

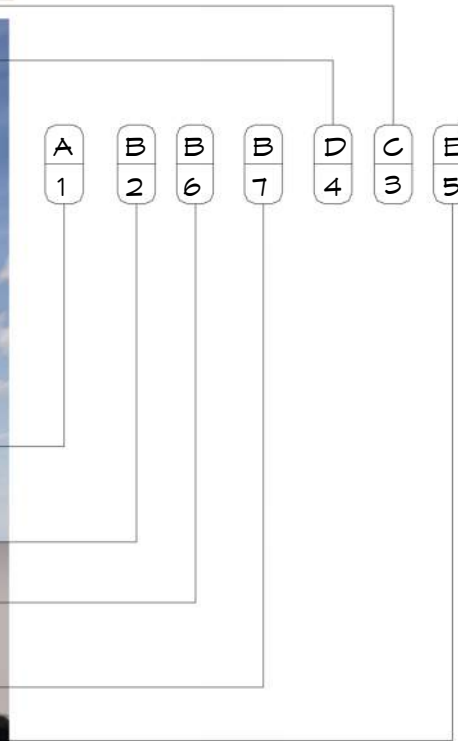
## exterior material legend option 1

### MATERIAL TYPE

- A. VERTICAL CEMENTITIOUS SIDING
- B. EIFS
- C. ASPHALT SHINGLES
- D. CEMENTITIOUS BUILDING TRIM
- E. MANUFACTURED STONE

### MATERIAL FINISH

- 1. PAINT, COLOR 1, TBD
- 2. EIFS FINISH COAT - 3, COLOR TBD
- 3. PER MANUFACTURER, TBD
- 4. PAINT, ACCENT COLOR 2, TBD
- 5. PER MANUFACTURER, TBD
- 6. EIFS FINISH COAT - 2, COLOR TBD
- 7. EIFS FINISH COAT - 4, COLOR TBD



C:\Users\kh\Documents\2020-01\_Sequoia Duplex - No Roof Terrace\_khHCZVS.rvt

SEQUOIA DUPLEX

2020-01

03/10/20



TOMPKINS ARCHITECTS

## exterior material legend option 2



A	B	B	B	C	D	E
1	2	6	7	3	4	5

### MATERIAL TYPE

- A. HORIZONTAL CEMENTITIOUS SIDING
- B. EIFS
- C. ASPHALT SHINGLES
- D. CEMENTITIOUS BUILDING TRIM
- E. MANUFACTURED STONE

### MATERIAL FINISH

- 1. PAINT, COLOR 1, TBD
- 2. EIFS FINISH COAT - 3, COLOR TBD
- 3. PER MANUFACTURER, TBD
- 4. PAINT, ACCENT COLOR 2, TBD
- 5. PER MANUFACTURER, TBD
- 6. EIFS FINISH COAT - 2, COLOR TBD
- 7. EIFS FINISH COAT - 4, COLOR TBD



A	B	B	B	D	C	E
1	2	6	7	4	3	5

SEQUOIA DUPLEX

2020-01

03/10/20



TOMPKINS  
ARCHITECTS

# exterior material legend option 3



- A
- B
- B
- B
- C
- D
- E

## MATERIAL TYPE

- A. HORIZONTAL CEMENTITIOUS SIDING
- B. EIFS
- C. ASPHALT SHINGLES
- D. CEMENTITIOUS BUILDING TRIM
- E. MANUFACTURED STONE

## MATERIAL FINISH

- 1. PAINT, COLOR 1, TBD
- 2. EIFS FINISH COAT - 3, COLOR TBD
- 3. PER MANUFACTURER, TBD
- 4. PAINT, ACCENT COLOR 2, TBD
- 5. PER MANUFACTURER, TBD
- 6. EIFS FINISH COAT - 2, COLOR TBD
- 7. EIFS FINISH COAT - 4, COLOR TBD



- A
- B
- B
- B
- D
- C
- E

SEQUOIA DUPLEX

2020-01

03/10/20



TOMPKINS  
ARCHITECTS

# exterior material legend - option 4



- A 1
- B 2
- B 6
- B 7
- C 3
- D 4
- E 5

## MATERIAL TYPE

- A. HORIZONTAL CEMENTITIOUS SIDING
- B. EIFS
- C. ASPHALT SHINGLES
- D. CEMENTITIOUS BUILDING TRIM
- E. MANUFACTURED STONE

## MATERIAL FINISH

- 1. PAINT, COLOR 1, TBD
- 2. EIFS FINISH COAT - 3, COLOR TBD
- 3. PER MANUFACTURER, TBD
- 4. PAINT, ACCENT COLOR 2, TBD
- 5. PER MANUFACTURER, TBD
- 6. EIFS FINISH COAT - 2, COLOR TBD
- 7. EIFS FINISH COAT - 4, COLOR TBD



- A 1
- B 2
- B 6
- B 7
- D 4
- C 3
- E 5

SEQUOIA DUPLEX

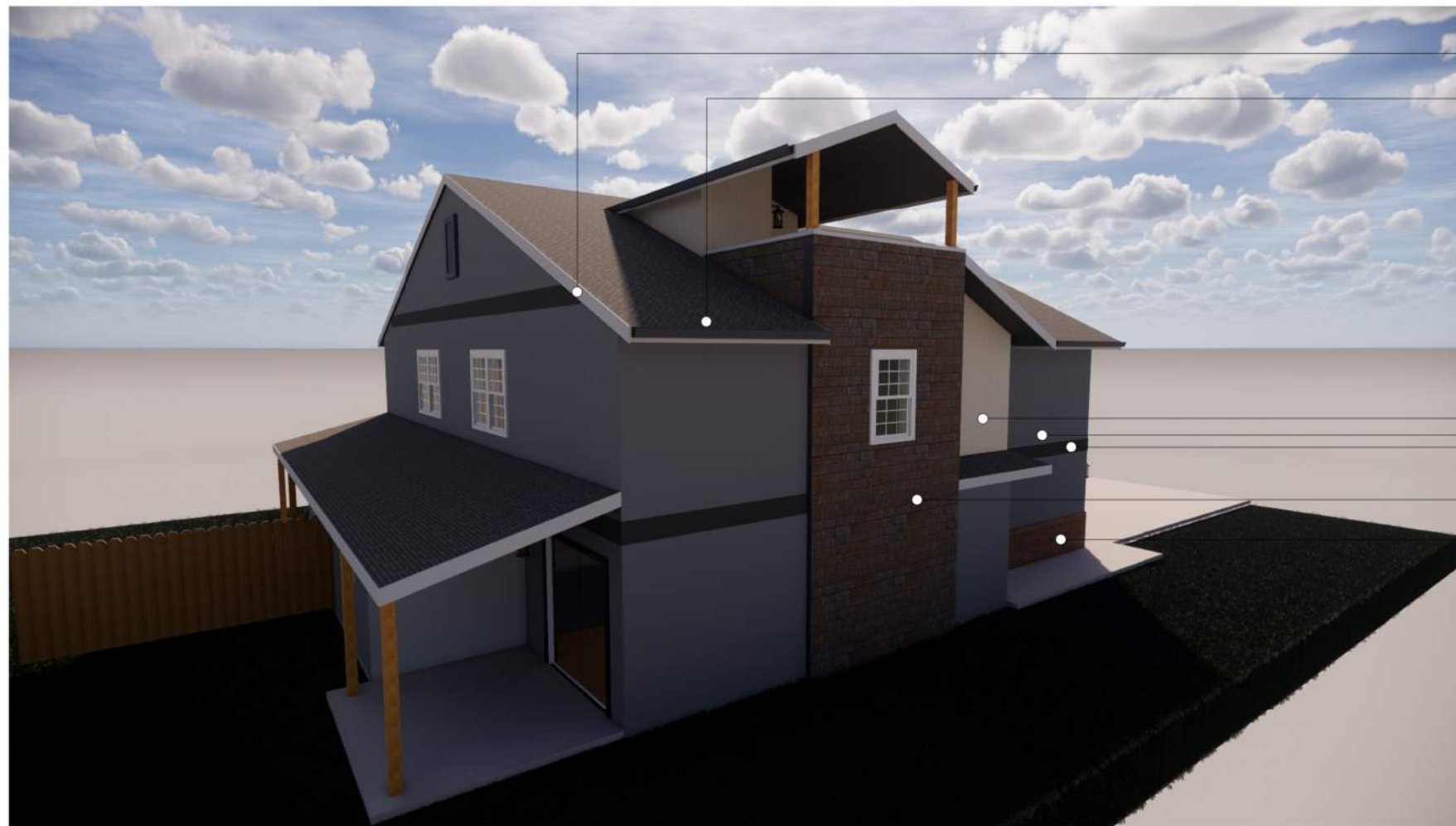
2020-01

03/10/20



TOMPKINS ARCHITECTS

# exterior material legend - option 5



- A
- B
- B
- B
- C
- D
- E

## MATERIAL TYPE

- A. VERTICAL CEMENTITIOUS SIDING
- B. EIFS
- C. ASPHALT SHINGLES
- D. CEMENTITIOUS BUILDING TRIM
- E. MANUFACTURED STONE

## MATERIAL FINISH

- 1. PAINT, COLOR 1, TBD
- 2. EIFS FINISH COAT - 3, COLOR TBD
- 3. PER MANUFACTURER, TBD
- 4. PAINT, ACCENT COLOR 2, TBD
- 5. PER MANUFACTURER, TBD
- 6. EIFS FINISH COAT - 2, COLOR TBD
- 7. EIFS FINISH COAT - 4, COLOR TBD



- A
- B
- B
- B
- D
- C
- E

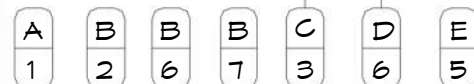
SEQUOIA DUPLEX

2020-01

03/10/20



TOMPKINS  
ARCHITECTS



## exterior material legend - option 6

- MATERIAL TYPE**
- A. HORIZONTAL CEMENTITIOUS SIDING
  - B. EIFS
  - C. ASPHALT SHINGLES
  - D. CEMENTITIOUS BUILDING TRIM
  - E. MANUFACTURED STONE

- MATERIAL FINISH**
- 1. PAINT, COLOR 1, TBD
  - 2. EIFS FINISH COAT - 3, COLOR TBD
  - 3. PER MANUFACTURER, TBD
  - 4. PAINT, ACCENT COLOR 2, TBD
  - 5. PER MANUFACTURER, TBD
  - 6. EIFS FINISH COAT - 2, COLOR TBD
  - 7. EIFS FINISH COAT - 4, COLOR TBD

