

**Submittal**

**The Summit Phase 2**

**Exterior Fixtures**

**03/03/2020**

**ELDFCON**  
**ELECTRICAL DESIGN & CONSTRUCTION**

**The Summit Phase 2**  
**Light Fixture Submittal**  
**03/03/2020**

- P. LED Canopy Light
- T. Decorative LED Up/Down Exterior Sconce
- W. Exterior LED Wall Pack
- Z. Emergency Egress Light

# CPY Series - Version B

CPY250® LED Canopy/Soffit Luminaire

Rev. Date: V14 06/03/2019

## Product Description

The CPY250® LED Canopy/Soffit Luminaire has an extremely thin profile constructed of rugged cast aluminum. It can be surface mounted easily from below the canopy deck and can be pendant mounted. Direct imaging of the LEDs is eliminated with a highly efficient patterned flat or 0.91" (23mm) drop glass lens.

**Applications:** Petroleum canopies, CNG fueling stations, soffits

## Performance Summary

Assembled in the U.S.A. of U.S. and imported parts

**Initial Delivered Lumens:** Up to 20,080

**Efficacy:** Up to 151 LPW

**CRI:** Minimum 70 CRI

**CCT:** 3000K (+/- 300K), 4000K (+/- 300K), 5700K (+/- 500K)

**Limited Warranty\*:** 10 years on luminaire/10 years on Colorfast DeltaGuard® finish

IP66 Rated (Direct Mount only)

Class I, Division 2 Hazardous Location for select models

\* See <http://creelighting.com/warranty> for warranty terms

## Accessories

Field-Installed	
<b>Direct Mount Luminaires</b> <b>Canopy Upgrade Kits (18 ga. steel, except where noted)</b> CPY-AP304* - for use with Cree Lighting CAN-304 luminaires, 16 ga. 5052 aluminum XA-BXCCMW - for use with Jet-Philips, 21.60" (549mm) square, white XA-BXCCNW - for use with Elco Franciscan, 22.06" (560mm) square, white XA-BXCCPW - for use with LSI Dakota or Masters, 22.50" (572mm) square, white XA-BXCCQW - for use with Whiteway Riviera or Rig-A-Lite, 20.60" (523mm) square, white XA-BXCCRW - for use with Elco Merrit, 18.06" (459mm) square, white XA-BXCCSW - for use with LSI Richmond or Whiteway Civic, 23.00" (584mm) L x 13.00" (330mm) W, white <b>Direct Mount Junction Box/Stem Kit</b> XA-BXCCJB0X - 6.0" (152mm) H x 3/4" (19mm) NPT Stem - Watertight - Rated for feed through 8 (4 in, 4 out) #12 AWC conductors <b>Direct Mount Beauty Plates</b> XA-BXCCBPW - 26.17" (665mm) Beauty Plate Only (18 ga. steel), white XA-BXCCBPB12W - 26.17" (665mm) Beauty Plate (18 ga. steel) w/12" (305mm) Backer Plate (16 ga. steel), white - For use in canopies where deck opening is larger than what is required for mounting the CPY250 luminaire. Maximum deck opening 10.75" x 15" (183mm x 375mm) XA-BXCCBPB16W - 26.17" (665mm) Beauty Plate (18 ga. steel) w/16" (406mm) Backer Plate (16 ga. steel), white - For use in canopies where deck opening is larger than what is required for mounting the CPY250 luminaire. Maximum deck opening 12" x 15" (305mm x 375mm)	
<b>Pendant Mount Luminaires</b> <b>Pendant Mount Kits</b> XA-PS12KIT* - 5" (127mm) pendant XA-PS18KIT* - 11" (279mm) pendant XA-PS22KIT* - 15" (381mm) pendant - Includes two conduit fittings and 3/4-14 NPT pipe threaded on two ends <b>Hand-Held Remote</b> XA-SENSREM - For successful implementation of the programmable multi-level option, a minimum of one hand-held remote is required	

\* Must specify color: BK [Black], BZ [Bronze], SV [Silver] or WH [White]

## Ordering Information

Example: CPY250-B-DM-D-A-UL-SV

Product	Version	Mounting	Optic	Input Power Designator	Voltage	Color Options	CCT	Options
CPY250	B	DM Direct	D 0.91" (23mm) Drop Lens	A 60W	UL Universal 120-277V	BK Black	30K 3000K	DIM 0-10V Dimming - Control by others - Refer to Dimming spec sheet for details - Can't exceed wattage of specified Input Power Designator
		HC Hook & Cord	F Flat Lens	B 96W	UH Universal 347-480V	BZ Bronze	40K 4000K	HZ Class I, Div. 2 Hazardous Location Certification - Available with DM and PD mounts only - A & C input power designators are available for DM and PD mounts except PD mount with 34 & 48 voltages in Canada - Not available with K or PML options
		PD Pendant		C 31W		SV Silver	57K 5700K	K NSF 2 Certification - Luminaires include NSF certification mark - Available with the DM mount only - Not available with the HZ or PML options
				E 145W		WH White		PML Programmable Multi-Level - Available with UL voltage only - Refer to PML spec sheet for details
				F 85W	34* 347V - A & C input power designators only 48* 480V - A & C input power designators only			

\* 347 and 480V with A & C input power designators utilize a magnetic step-down transformer. For input power for 347 and 480V, refer to the Electrical Data table

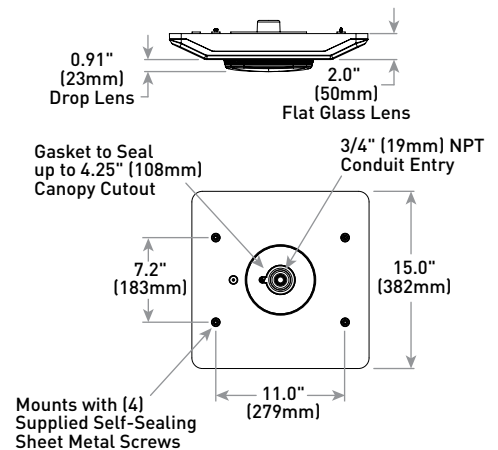
## DM Mount



Flat Lens



Drop Lens



## Weight

12.5 lbs. (5.7kg)



**CREE** LIGHTING

US: [creelighting.com](http://creelighting.com) T (800) 236-6800 F (262) 504-5415

Canada: [creelighting-canada.com](http://creelighting-canada.com) T (800) 473-1234 F (800) 890-7507

Product Specifications

CONSTRUCTION & MATERIALS

- Slim, low profile design
- Easy mounting and servicing from below the deck
- Luminaire housing is constructed of rugged cast aluminum with integral heat sink specifically designed for LED
- Flat lens is 0.125" tempered Solite® glass
- Drop lens is 0.157" molded borosilicate glass
- Direct mount is suitable for use in single or double skin canopies with a minimum 4.0" (102mm) wide panels and a minimum 22 gauge, 0.030" (0.7mm) canopy thickness
- Direct mount luminaire mounts directly to the canopy deck with the drilling of a single 2" to 4" (51mm to 102mm) round hole, is secured in place with self-sealing screws that provide a weathertight seal and includes 3/4" (19mm) conduit entry for direct wire feed
- Hook and cord mount includes a 3' (0.91m) cord out of the luminaire and is intended to hang from the single hook
- Standard pendant mount includes a mounting bracket and a J-Box for customer wiring and is intended to be mounted by 3/4 IP pendant (by others)
- Hazardous location pendant mount has a threaded hub which accepts 3/4" NPT conduit (by others) and secures with a 1/4"-20 set screw
- Exclusive Colorfast DeltaGuard® finish features an E-Coat epoxy primer with an ultra-durable powder topcoat, providing excellent resistance to corrosion, ultraviolet degradation and abrasion. Black, bronze, silver and white are available
- **Weight:** 12.5 lbs. (5.7kg)


ELECTRICAL SYSTEM

- **Input Voltage:** 120-277V or 347-480V, 50/60Hz, Class 1 drivers
- **Power Factor:** > 0.9 at full load
- **Total Harmonic Distortion:** < 20% at full load
- Integral 6kV surge suppression protection standard
- When code dictates fusing, a slow blow fuse or type C/D breaker should be used to address inrush current

CONTROLS

- Continuous dimming to 10% with 0-10V DC control protocol
- **10V Source Current:** 0.15mA
- Use only lighting controls with neutral connection or controls intended for use with LED fixtures
- Reference LED Dimming spec sheet for additional dimming information

REGULATORY & VOLUNTARY QUALIFICATIONS

- cULus Listed
- Suitable for wet locations when ordered with DM mount. Covered ceiling required only when not used with cULus Listed, wet location junction box or XA-BXCCJB0X accessory
- Suitable for damp locations when ordered with HC and PD mounts. Designed for indoor use only
- Suitable for wet locations when ordered with PD mount and HZ option
- Enclosure rated IP66 per IEC 60529 when ordered with DM mount
- Consult factory for CE Certified products
- 6kV surge suppression protection tested in accordance with IEEE/ANSI C62.41.2
- Meets FCC Part 15, Subpart B, Class A limits for conducted and radiated emissions
- Luminaire and finish endurance tested to withstand 5,000 hours of elevated ambient salt fog conditions as defined in ASTM Standard B 117
- Meets Buy American requirements within ARRA
- RoHS compliant. Consult factory for additional details
- Class I, Division 2 Hazardous Location rated when ordered with the DM or PD mount and the HZ option. A & C input power designators are available for DM and PD mounts except PD mount with 34 & 48 voltages in Canada. Not available with K or PML options. Rated for Groups A, B, C & D. Bears a T3C (160°C) temperature classification within a 25°C ambient
- NSF Certified when ordered with DM mount and K option. Not available with HZ or PML options. Refer to <http://info.nsf.org/Certified/Food/> for additional details
- DLC and DLC Premium qualified versions available. Please refer to <https://www.designlights.org/search/> for most current information
- Dark Sky Friendly, IDA Approved when ordered with 30K CCT and Flat Lens (F)
-  **CA RESIDENTS WARNING:** Cancer and Reproductive Harm – [www.p65warnings.ca.gov](http://www.p65warnings.ca.gov)

Electrical Data*							
Input Power Designator	System Watts 120-277V	System Watts 347-480V; 347/480V	Total Current (A)				
			120V	208V	240V	277V	347V 480V
A	60	68	0.51	0.29	0.25	0.22	0.20 0.14
B	96	96	0.82	0.47	0.40	0.35	0.28 0.20
C	31	33	0.26	0.15	0.13	0.11	0.10 0.07
E	145	145	1.22	0.70	0.61	0.53	0.42 0.30
F	85	85	0.72	0.41	0.36	0.31	0.24 0.18

\* Electrical data at 25°C (77°F). Actual wattage may differ by +/- 10% when operating between 120-480V +/- 10%

CPY Series - Version B Ambient Adjusted Lumen Maintenance <sup>1</sup>					
Ambient	Initial LMF	25K hr Projected <sup>2</sup> LMF	50K hr Projected <sup>2</sup> LMF	75K hr Calculated <sup>3</sup> LMF	100K hr Calculated <sup>3</sup> LMF
5°C (41°F)	1.03	1.00	0.96	0.93	0.90
10°C (50°F)	1.02	0.99	0.95	0.92	0.89
15°C (59°F)	1.02	0.99	0.95	0.92	0.89
20°C (68°F)	1.01	0.98	0.95	0.91	0.88
25°C (77°F)	1.00	0.97	0.94	0.90	0.87
30°C (86°F)	0.99	0.96	0.93	0.90	0.87

<sup>1</sup> Lumen maintenance values at 25°C (77°F) are calculated per TM-21 based on LM-80 data and in-situ luminaire testing on sheet metal. Luminaire ambient temperature factors (LATF) have been applied to all lumen maintenance factors. Please refer to the [Temperature Zone Reference Document](#) for outdoor average nighttime ambient conditions

<sup>2</sup> In accordance with IESNA TM-21-11, Projected Values represent interpolated value based on time durations that are within six times (6X) the IESNA LM-80-08 total test duration (in hours) for the device under testing ([DUT] i.e. the packaged LED chip)

<sup>3</sup> In accordance with IESNA TM-21-11, Calculated Values represent time durations that exceed six times (6X) the IESNA LM-80-08 total test duration (in hours) for the device under testing ([DUT] i.e. the packaged LED chip)

Operating Temperature Range			
Input Power Designator	Direct Mount to Plywood	Direct Mount to Sheet Metal/ Suspended	Class 1, Division 2 Hazardous Location
			Direct Mount to Plywood      Direct Mount to Sheet Metal/Suspended
A	-40°C to +40°C	-40°C to +45°C	-40°C to +25°C
B	-40°C to +35°C	-40°C to +40°C	
C	-40°C to +45°C	-40°C to +50°C	
E	-40°C to +35°C	-40°C to +40°C	
F	-40°C to +40°C	-40°C to +45°C	

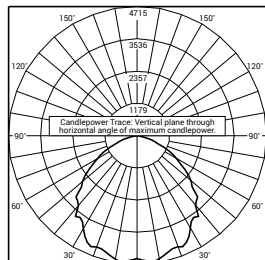
**WARNING:** Exceeding maximum operating temperature may result in thermal foldback

## Photometry

All published luminaire photometric testing performed to IESNA LM-79-08 standards.

To obtain an IES file specific to your project consult: <http://creelighting.com/products/outdoor/canopy-and-soffit/cpy-series>

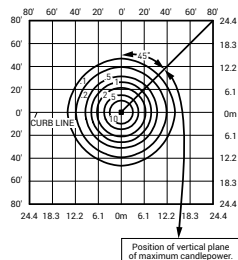
### DROP LENS



CESTL Test Report #: PL08412-001A

CPY250-B-\*\*-D-B-UL-\*\*-57K

Initial Delivered Lumens: 12,403



CPY250-B-\*\*-D-B-UL-\*\*-57K

Mounting Height: 15' (4.6m) A.F.G.

Initial Delivered Lumens: 12,860

Initial FC at grade

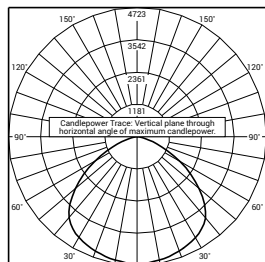
### Drop Lens Distribution

Input Power Designator	3000K		4000K		5700K	
	Initial Delivered Lumens*	BUG Ratings** Per TM-15-11	Initial Delivered Lumens*	BUG Ratings** Per TM-15-11	Initial Delivered Lumens*	BUG Ratings** Per TM-15-11
A	7,250	B3 U2 G1	7,600	B3 U2 G1	7,720	B3 U2 G1
B	11,850	B3 U2 G1	12,380	B3 U2 G1	12,860	B3 U2 G1
C	4,210	B2 U2 G1	4,420	B2 U2 G1	4,520	B2 U2 G1
E	19,100	B4 U3 G2	19,600	B4 U3 G2	20,080	B4 U3 G2
F	11,850	B3 U2 G1	12,380	B3 U2 G1	12,860	B3 U2 G1

\* Initial delivered lumens at 25°C (77°F). Actual production yield may vary between -10 and +10% of initial delivered lumens

\*\* For more information on the IES BUG (Backlight-Uplight-Glare) Rating visit: <https://www.ies.org/wp-content/uploads/2017/03/TM-15-11BUGRatingsAddendum.pdf>

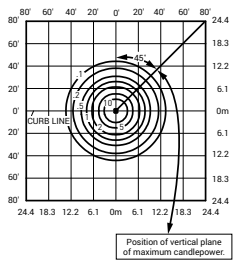
### FLAT LENS



CESTL Test Report #: PL08165-001C

CPY250-B-\*\*-F-B-UL-\*\*-57K

Initial Delivered Lumens: 13,040



CPY250-B-\*\*-F-B-UL-\*\*-57K

Mounting Height: 15' (4.6m) A.F.G.

Initial Delivered Lumens: 12,860

Initial FC at grade

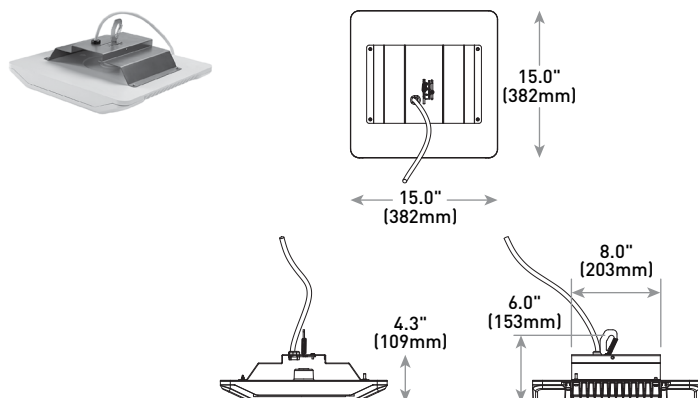
### Flat Lens Distribution

Input Power Designator	3000K		4000K		5700K	
	Initial Delivered Lumens*	BUG Ratings** Per TM-15-11	Initial Delivered Lumens*	BUG Ratings** Per TM-15-11	Initial Delivered Lumens*	BUG Ratings** Per TM-15-11
A	7,250	B3 U0 G1	7,600	B3 U0 G1	7,720	B3 U0 G1
B	11,850	B3 U0 G1	12,380	B3 U0 G1	12,860	B3 U0 G1
C	4,210	B2 U0 G1	4,420	B2 U0 G1	4,520	B2 U0 G1
E	19,100	B4 U0 G1	19,600	B4 U0 G1	20,080	B4 U0 G1
F	11,850	B3 U0 G1	12,380	B3 U0 G1	12,860	B3 U0 G1

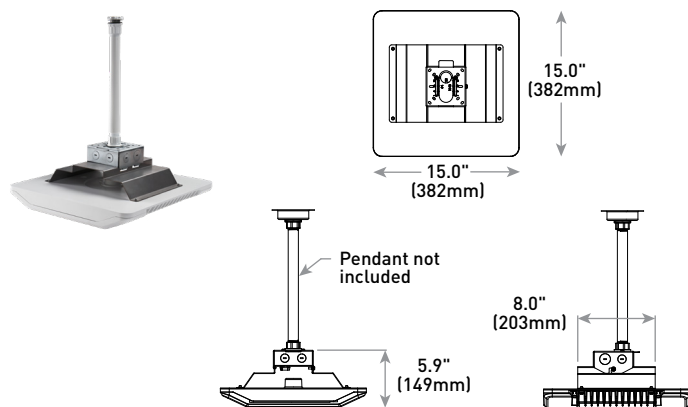
\* Initial delivered lumens at 25°C (77°F). Actual production yield may vary between -10 and +10% of initial delivered lumens

\*\* For more information on the IES BUG (Backlight-Uplight-Glare) Rating visit: <https://www.ies.org/wp-content/uploads/2017/03/TM-15-11BUGRatingsAddendum.pdf>

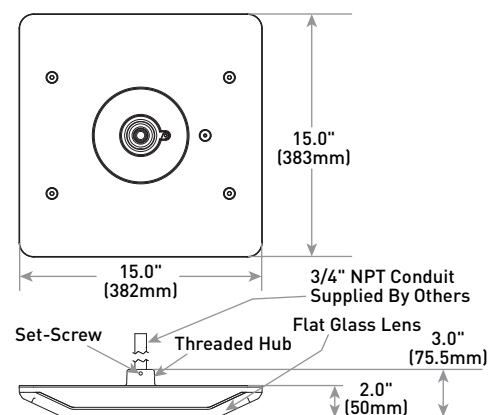
## HC Mount



## PD Mount



## PD Mount w/HZ Option



© 2019 Cree Lighting, A company of IDEAL INDUSTRIES. All rights reserved. For informational purposes only. Content is subject to change. Patent [www.cree.com/patents](http://www.cree.com/patents). Colorfast DeltaGuard® and CPY250® are registered trademarks, and the CPY250 design is a trademark of IDEAL INDUSTRIES Lighting, LLC. Cree® is a registered trademark, and the Cree Lighting logo is a trademark of Cree, Inc. The UL logo is a registered trademark of UL LLC. The NSF logo is a registered trademark of NSF International. The DLC QPL logo and the DLC QPL Premium logo are registered trademarks of Efficiency Forward, Inc.

US: [creelighting.com](http://creelighting.com) T (800) 236-6800 F (262) 504-5415  
 Canada: [creelighting-canada.com](http://creelighting-canada.com) T (800) 473-1234 F (800) 890-7507

**CREE**  **LIGHTING**



Camman Lighting, Inc.  
111 Strawcutter Road  
Derry, PA 15627  
United States of America

T

Ph: 724-539-7670

Fax: 724-539-7746

## Quote

Number: 120194

Date: 19-Nov-19

### To

PREMIER LIGHTING & CONTROLS  
401SE Fleetway Drive  
Lee's Summit, MO 64081  
United States of America

### Quote To

Jeff Bersuch  
PREMIER LIGHTING & CONTROLS  
401SE Fleetway Drive  
Lee's Summit, MO 64081  
United States of America

Ph: 913-541-8239

Fax: 913-541-8877

Ph: 913-541-8239

Fax: 913-541 8239

Terms		Ship Via	Region	Quoted By	Salesperson
		Best Way	CENTRA	DTHOMAS	KENSIG
Quantity	Description	Unit Price		Amount	
	Reference: Summit Church-P2				
2	Line: 001 Part: OW80508-8 Exterior Sconce Metal Trim/Frame Clear Acrylic Top & Bottom Lens LED: 4000K (Up & Down Light) (Wide Beam - Bottom)(Narrow Beam - Top) 120/277V Remote Mount Dimmable Power Supply Standard Powder Coat Finish - TBD Approx 5"W x 9"H x 4"D  Suitable for Wet Locations ea	Expiration Date: 03-Jan-20 Rev:		\$655.00	\$1,310.00
	Terms and Conditions:  This quote is valid for 45 days from the date of the quotation. After this time, prices are subject to change.  Pricing is based on quantities stated above. Deviation in quantities may result in additional charges.  Replacement parts for jobs that have shipped are always quoted at 0% commission. Overage can be added to regular parts orders, but cannot be added to orders when a part is being returned for credit.  Review all specifications to make sure they accurately and completely represent your requirements. Acceptance of this quote indicates that all specifications have been read and agreed to.  Quoted price is less lamps and does not include crate charges, freight or handling.  A 50% deposit is required on all custom orders.  LEAD TIMES:	Total		\$1,310.00	



Camman Lighting, Inc.  
111 Strawcutter Road  
Derry, PA 15627  
United States of America

Ph: 724-539-7670

Fax: 724-539-7746

**Quote**

Number: 120194

Date: 19-Nov-19

**To**

PREMIER LIGHTING & CONTROLS  
401SE Fleetway Drive  
Lee's Summit, MO 64081  
United States of America

**Quote To**

Jeff Bersuch  
PREMIER LIGHTING & CONTROLS  
401SE Fleetway Drive  
Lee's Summit, MO 64081  
United States of America

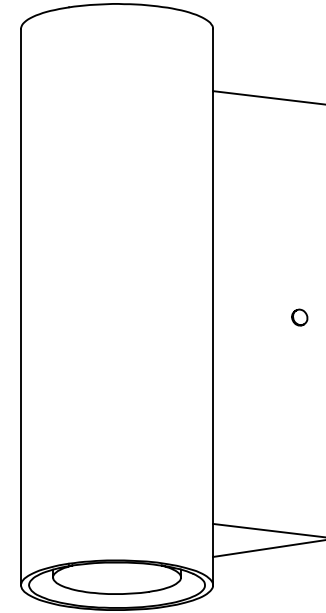
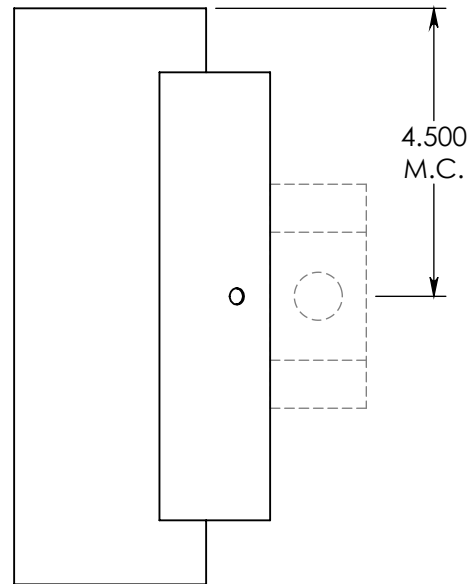
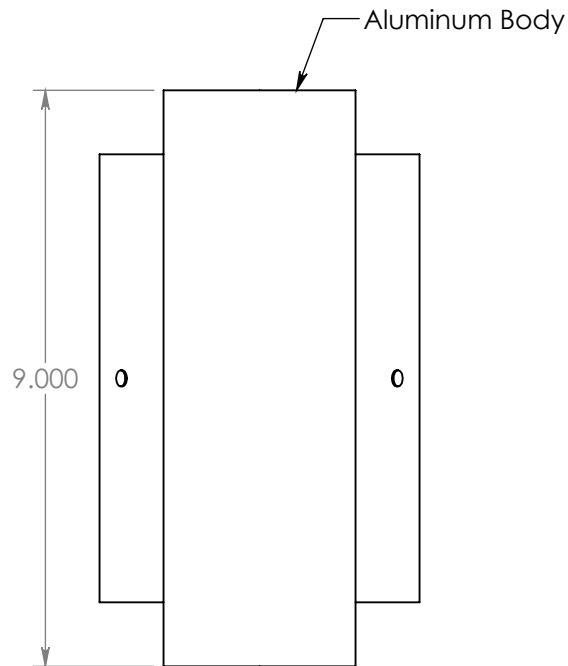
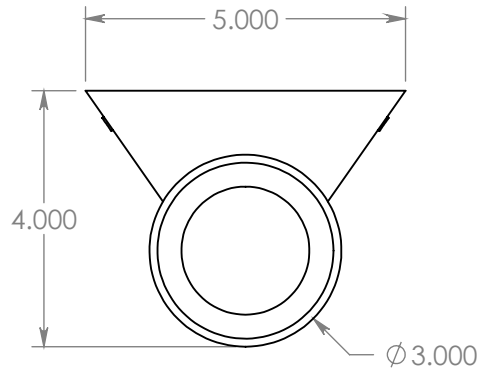
Ph: 913-541-8239

Fax: 913-541-8877

Ph: 913-541-8239

Fax: 913-541 8239

Terms		Ship Via	Region	Quoted By	Salesperson
		Best Way	CENTRA	DTHOMAS	KENSIG
Quantity	Description	Unit Price		Amount	
	Standard - (6) Weeks Modified - (8) Weeks Custom - (12) Weeks Lead times are subject to change.				



Mounting: Fixture is supplied with hardware for attachment to a 4 inch octagonal junction box (provided by others).



111 STRAWCUTTER ROAD | DERRY, PA 15627  
P: 724.539.7670 F: 724.539.7746  
[www.cammanlighting.com](http://www.cammanlighting.com)

THE DESIGNS AND CONCEPTS REPRESENTED IN THIS DOCUMENT ARE THE SOLE PROPERTY OF CAMMAN LIGHTING, INC. AND MAY NOT BE COPIED, REPRODUCED OR MANUFACTURED WITHOUT PRIOR WRITTEN CONSENT OF CAMMAN LIGHTING, INC.

Quote No.:	104188		
Job Name:	*		
Item No.:	WS80508-8	Rev:	2
Type:	*	Qty:	20
Lamping:	LED, 4000K Narrow Beam (Up / Down) 20W, 950 Lumens (Total)		
Ballast:	120V Dimming Driver 0-10V		
Finish:	Standard Powder Coat (TBD)		
Date:	9/28/2015		
Notes:	Suitable for Dry Locations		
	*		

APPROVAL: \_\_\_\_\_

# E110 Series

## Architectural LED Trapezoid Wallpack



### DESCRIPTION

The E110 Series is a traditional full cutoff geometric sconce designed for optimal light control and distribution. Its die-cast aluminum construction provides ideal thermal management. Lumen packages from 3360 to 9800 are available in 4000K and 5000K CCT and a Type III distribution. This product offers project flexibility with photocontrol, integral motion sensor and battery backup options. The E110 is DLC Qualified for maximum energy savings and utility rebates. This family of product is offered in two housing sizes to complement new construction or retrofit applications, accommodating mounting heights up to 30'.

### SPECIFICATIONS

#### Construction:

- Die-cast aluminum housing with stainless steel hardware and powder coated bronze finish
- UV-stabilized polycarbonate lens
- Integral heat sink maximizes heat dissipation for longer LED life
- Hinged back box isolates drivers from LEDs and offers easy access to drivers
- Back box includes three conduit entry points (one on top and two on the sides) as well as a knockout on the bottom for optional sensor

#### Optics/LEDs:

- No uplight design to minimize light pollution
- 30W to 90W LED models replace 100W to as high as 400W HID for up to 70% energy savings
- Efficacies up to 113 LPW maximize utility rebates
- Type III distribution
- Available in 4000K and 5000K CCT
- CRI ≥80
- 70,000 hrs L70

#### Electrical:

- 120-277VAC, 50/60Hz
- 0-10V Dimming driver

#### Testing & Compliance:

- cULus Listed for Wet Locations
- DesignLights Consortium® (DLC) Qualified (consult QPL for specific models)
- Operating temperatures: -40°C to 50°C (-40°F to 122°F)

#### Installation:

- Housing hinges to back box for easy installation
- Back box accommodates conduit entry as well as optional sensor
- Mounts to a standard 3-1/2" or 4" square electrical J-box

#### Options:

- Integral Battery Backup (BB) operates for 90 minutes, providing over 800 lumens for path of egress. Rated for ambient temperatures of 0°C to 40°C (32°F to 104°F)
- Factory installed 120/277VAC button type photocontrol (PC)
- Factory installed integral dimming occupancy sensor (SC)

#### Accessories:

- Dimming sensor for field installation (TL-MSSW)
- Remote control for TL-MSSW sensor (TL-MSSW-REMOTE)
- Button type universal photocontrol sensor 120/277VAC (PCU)

#### Warranty:

- Five Year Warranty (Terms and Conditions Apply)

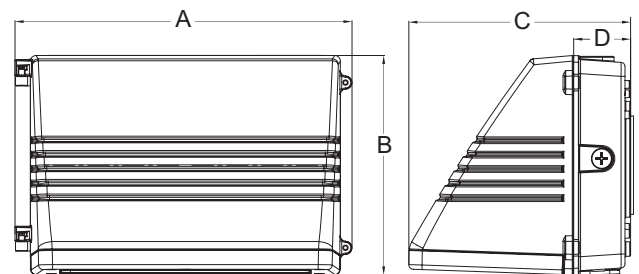


#### Specs at a Glance

Model	E110-30	E110-45	E110-90
Wattage (W)*	30W	45W	90W
Lumens (lm)	3360	4900	9800
Efficacy (LPW)	113	108	109
Equivalency (HID)	100-150 Watt	175-250 Watt	250-400 Watt
Distribution	Type III		
CCT (K)	4000K, 5000K		
CRI	≥80		
Input Voltage	120-277VAC, 50/60Hz		
Operating Temp	-40°C to 50°C (-40°F to 122°F)		
Certifications	cULus Listed for Wet Locations, DLC		
Warranty	5 Years		
Weight	9.8 lbs	9.8 lbs	15.0 lbs

\* Nominal Wattage. Tested at 5000K CCT. See performance table for more detailed lumen information.

**Note:** Environment and application will affect actual performance. Typical values and 25°C used for testing.



Model	A	B	C	D
E110-30	14.2"	9.8"	8.8"	2.5"
E110-45	14.2"	9.8"	8.8"	2.5"
E110-90	18.1"	9.8"	11.2"	2.5"

Model: \_\_\_\_\_ Date: \_\_\_\_\_

Accessories: \_\_\_\_\_

Job Name: \_\_\_\_\_ Type: \_\_\_\_\_

## Ordering Information (Example: E110-45-VS-4K-BR-BB)

Series	Wattage	Input Voltage	CCT	Finish	Options	Accessories <sup>2</sup> (Field Installed)
E110	30 = 30W 45 = 45W 90 = 90W	VS = 120-277VAC	4K = 4000K 5K = 5000K	BR = Bronze	BB <sup>1</sup> = Battery Backup SC <sup>1</sup> = Dimming Sensor PC = Button Photocontrol 120/277VAC	PCU = 120-277VAC Button Photocontrol TL-MSSW = Dimming Sensor TL-MSSW-REMOTE = Remote for Sensor

### Notes

<sup>1</sup> PC Option not required if ordering SC

<sup>2</sup> Order as a separate line item. Shipped in a separate box for final installation in the field

## Performance Data

Model	Wattage	CCT	Distribution	Lumen Output (lumens)	Efficacy
E110-30-VS-4K-XX	30	4000K	Type III	3360	112
E110-30-VS-5K-XX	30	5000K	Type III	3390	113
E110-45-VS-4K-XX	45	4000K	Type III	4800	107
E110-45-VS-5K-XX	45	5000K	Type III	4900	108
E110-90-VS-4K-XX	90	4000K	Type III	9700	108
E110-90-VS-5K-XX	90	5000K	Type III	9800	109

## Sample Photometry

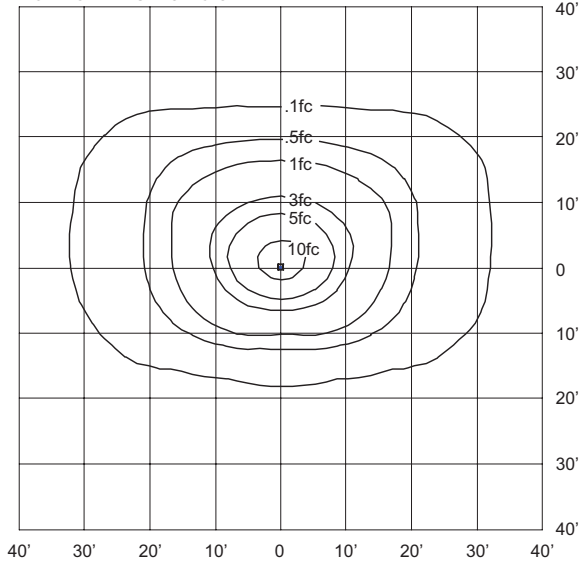
### E110-30-VS-4K

IES: TYPE III Very Short

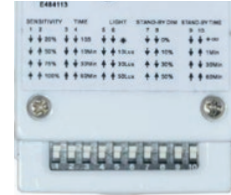
MOUNTING HEIGHT: 10'

TILT: ZERO


HORIZONTAL SPACING CRITERIA: 1.44

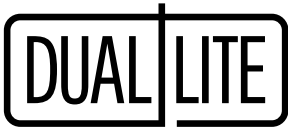


## Motion Sensor Details - Option (SC) and Accessories (TL-MSSW and TL-MSSW-REMOTE)



## Sensor Settings (Remote)

DETECTION RADIUS/ANGLE	MAX 60°/360°
MOUNTING HEIGHT	MAX 40'
REMOTE RANGE	MAX 33'
FREQUENCY	5.8 GHz
HIGH MODE	70%, 80%, 90%, 100% (DEFAULT 100%)
SENSITIVITY	20%, 50%, 75%, 100% (DEFAULT 100%)
HOLD TIME	10sec, 1min, 5min, 10min, 15min, 20min, 30min, 60min (DEFAULT 5min)
DAYLIGHT HARVESTING	 , (disabled), 10Lux, 30Lux, 50Lux (DEFAULT disabled)
STANDBY DIM SETTING	0, 10%, 20%, 30%, OFF (∞) (DEFAULT 30%)
STANDBY TIME SETTING (TO OFF)	ON (disabled), 1min, 30min, 60min (DEFAULT 60min)



FEATURES

Application

The PG is an indoor/outdoor, die-cast architectural emergency unit. It is a wet location listed, emergency luminaire with high-output LED technology that provides path of egress illumination for mounting over entrance/exit ways and perimeter walkways. Spectron® self-testing/self-diagnostic electronics are included standard. A battery heater for cold temperature operation is available as an option.

Construction

Housing and mounting plate are constructed of 0.125" die-cast aluminum and 0.125" closed-cell, medium density, neoprene gasket. The acrylic lens allows 92% light transmission. The reflector is electro-polished aluminum with 95% reflectance. Housing finish is powder coated electro-deposition paint available in four colors: dark bronze, white, platinum silver and black.

Installation

Universal housing knockouts for mounting to standard 31/2" and 4" octagon and 4" square electrical boxes. A 1/2" – 1/4 NPT threaded conduit opening is provided at the top of the housing and sealed with a closure plug. The back plate mounts to the wall surface using installer supplied hardware. The housing “snaps” to the back plate by a “pin and socket” arrangement, and is secured with two Fillister head screws. AC Lockout feature prevents battery discharge prior to initial unit power-up saving installation time.

Lamps

Four high-output, long life LED lamps arranged in redundant pairs.

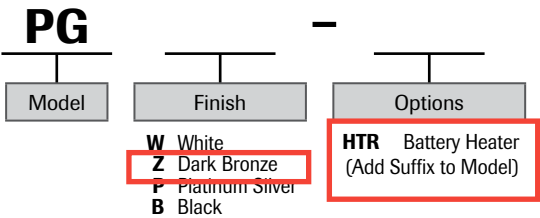
Compliances

- UL 924 Listed (emergency models only)
- UL Wet Location Listed
- NFPA 101 Life Safety Code
- NFPA 70 National Electrical Code
- OSHA
- U.S. Patent No. D627,916

Warranty

- Fixture: 5 Years Full
- Battery: 2 Years Full, 8 Years Pro Rata
- Lifetime LED Warranty

ORDERING GUIDE



Catalog Number	
Comments	Type



White



Dark Bronze

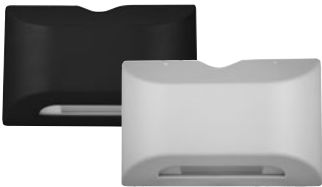


Platinum Silver

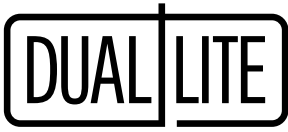


Black

Reference "Remote Heads and Fixtures" specification sheet for information on matching PG remote



PGR Remote LED



## SPECIFICATIONS

### Electronics

Upon failure of the normal utility power, a solid-state transfer switch automatically activates the emergency lamp. Upon resumption of the normal utility power, the battery is disconnected from the load and recharged through a solid-state charging unit. A low voltage battery disconnect feature protects the battery from severe damage during prolonged power failures. Spectron® self-testing/self-diagnostic circuitry provides automatic system testing on a monthly and semi-annual basis. Manual testing is available at any time using the push-to-test button: push once for a 60-second system test; push twice for a 90-minute system test.

Number of Lamps: Four high output LEDs

Lamp Configuration: Two sets of 2 LEDs provide illumination. In the unlikely event that any single LED should fail the remaining LEDs will continue to function.

Lamp Type: Solid state high output LEDs

Lamp Color: Cool White, 6350K

Total Lamp Output: 405 Lumens

Input: 120/277VAC, 60 Hz

Battery Charger: Temperature compensating, constant current

Transfer: Solid state

Functional Circuitry: AC lockout, transformer isolation, transient surge protection, low voltage battery disconnect, brownout detection, time delay retransfer

Battery Recharge Cycle: per UL time standards

Test Means: Integral test switch

Battery: Sealed, maintenance-free Nickel-Cadmium

Operating Temperature Range for Models without Heater:  
0°C to 50°C (32°F to 122°F)

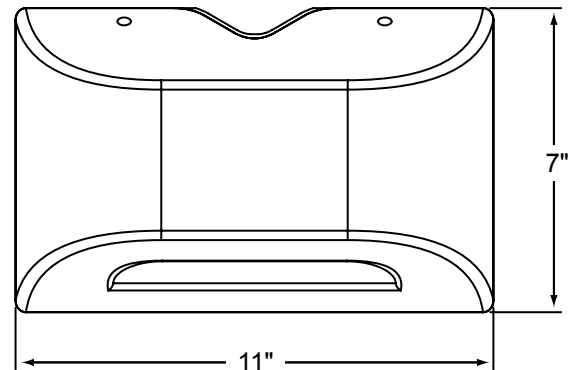
Operating Temperature Range for Models with Heater:  
-30°C to 50°C (-22°F to 122°F)

### Power Consumption

Models Without Heater		Models With Heater	
120VAC	2.78 watts	120VAC	15.2 watts
277VAC	2.88 watts	277VAC	15.7 watts

Power factor, average: 0.8 (lagging)

## DIMENSIONS



## ILLUMINATION PATTERN

### SINGLE UNIT COVERAGE

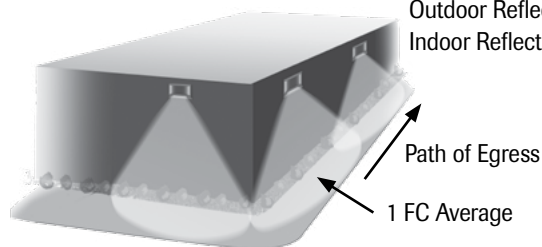
Mounting Height: 9'  
Outdoor Reflectance: 0/30/10  
Indoor Reflectance: 80/50/20



	Indoor	Outdoor
1 FC Average (W x D)	33' X 10'	27' X 10'
1 FC Minimum (W x D)	10' X 10'	9' X 10'

### MULTIPLE UNIT SPACING

Mounting Height: 9'  
Illuminated Path Depth: 6'  
Outdoor Reflectance: 30/10  
Indoor Reflectance: 80/50/20



	Indoor	Outdoor
1 FC Average	44'	33'
1 FC Minimum	16'	15'