

D-Series Size 1 LED Area Luminaire

Specifications
EPAL: 1.01 ft
Length: 33"
Width: 13"
Height H1: 7.12"
Height H2: 3.12"
Weight: 27 lbs

Ordering Information
EXAMPLE: DSX1 LED P7 40K T3M MVOLT SPA NLTAIR2 PIRNH DBDXX

DSX1 LED	LED	Power (Watt)	Color Temperature	Distribution	Finish	Mounting	Control Option
DSX1 LED	P7	40K	5000K	T3	Spot 1/2 beam	T395	Light only (not dim)
	P7	40K	4000K	T3	Spot 1/2 beam	T395	Light only (not dim)
	P7	40K	5000K	T3M	Spot 1/2 medium	T3M	Light only (not dim)
	P7	40K	5000K	T3M	Spot 1/2 medium	T3M	Light only (not dim)
	P7	40K	5000K	T3M	Spot 1/2 medium	T3M	Light only (not dim)
	P7	40K	5000K	T3M	Spot 1/2 medium	T3M	Light only (not dim)
	P7	40K	5000K	T3M	Spot 1/2 medium	T3M	Light only (not dim)
	P7	40K	5000K	T3M	Spot 1/2 medium	T3M	Light only (not dim)

LITHONIA LIGHTING

FEATURES & SPECIFICATIONS

INTRODUCTION - These specifications are for USA standards only. RT5 poles are not to be utilized for Sportlighting applications requiring use of cranes to mount luminaires. RT5 poles are not to be used for Sportlighting projects and are designed to be configured as a complete assembly with the luminaire commonly mounted within the pole maintenance enclosure.

CONSTRUCTION - Pole Shaft: The pole shaft is of 1 1/2" diameter (1.875") in a range of 12.1197" with a uniform wall thickness and a length of 48.0000" (48' 0"). The pole shaft is 1.875" in diameter. The pole shaft is provided in one piece with a 3' length tapered section at the top for mounting the luminaire. The pole shaft is provided in one piece with a 3' length tapered section at the top for mounting the luminaire. The pole shaft is provided in one piece with a 3' length tapered section at the top for mounting the luminaire.

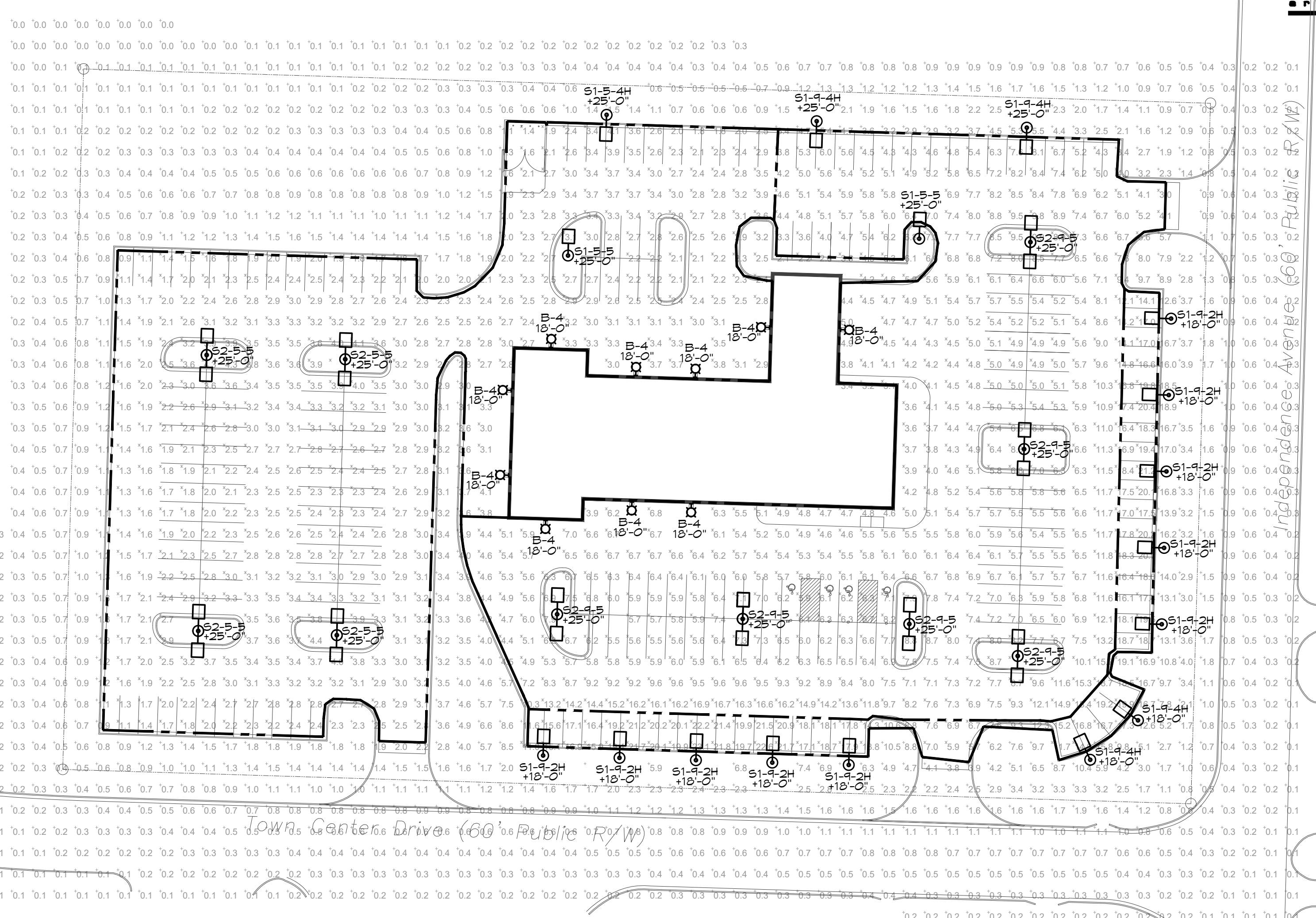
ANCHOR BASE - Anchor base is fabricated from hot-dipped galvanized carbon steel. All non-structural fasteners are galvanized or zinc-plated carbon steel, or stainless steel.

FINISH - Epoxy powder coated finish. Available in Dark Bronze, White, Black, Medium Bronze, Natural Aluminum, or Hot-Dipped Galvanized. Dark colors include Sandstone, Coastal Gray, Teak Green, Single Red and Silver Blue. Architectural Colors and Special Finishes are available by quote and include but are not limited to Hot-Dipped Galvanized, Flat over Galvanized, RAL Colors, Custom Colors and Extended Warranty Finishes.

WARRANTY - 1-year limited warranty. Complete warranty terms located at: www.lithonia.com/usa/customer-service/terms_and_conditions

NOTE: All performance may differ as a result of end-user environment and application. Specifications subject to change without notice.

ANCHOR BASE POLES
RTS
ROUND TAPERED STEEL



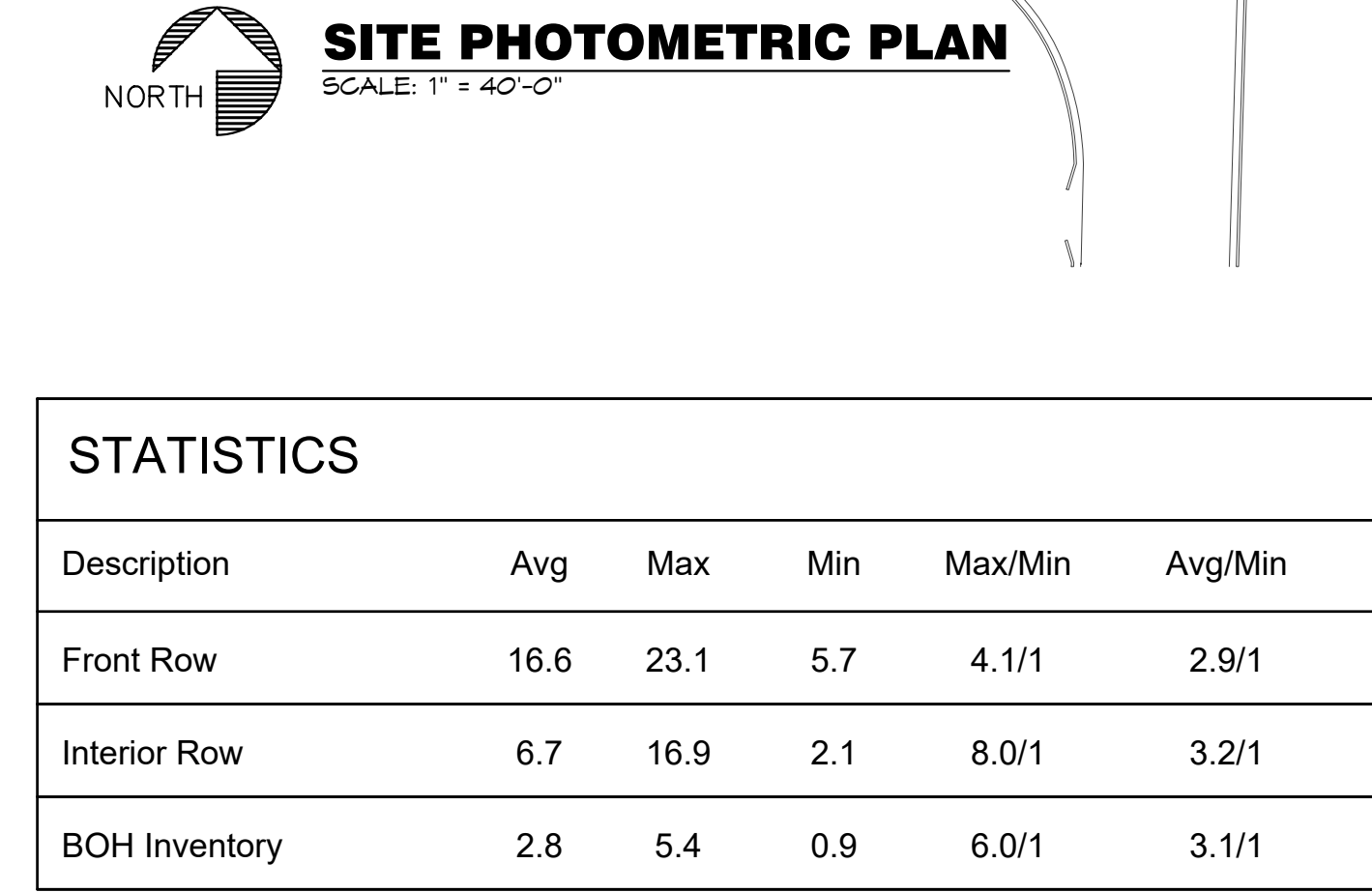
D-Series Size 1 LED Wall Luminaire

Specifications
Luminaire: 13-3/4" x 12 lbs
Depth: 10" (25.4 cm)
Height: 6-3/8" (16.2 cm)

Ordering Information
EXAMPLE: DSXW1 LED 200 1000 40K T3M MVOLT DBDXX

DSXW1 LED	LED	Power (Watt)	Color Temperature	Distribution	Finish	Mounting	Control Option
DSXW1 LED	10K	100W	5000K	T3	Spot 1/2 beam	T395	Light only (not dim)
	10K	100W	4000K	T3	Spot 1/2 beam	T395	Light only (not dim)
	10K	100W	5000K	T3M	Spot 1/2 medium	T3M	Light only (not dim)
	10K	100W	5000K	T3M	Spot 1/2 medium	T3M	Light only (not dim)
	10K	100W	5000K	T3M	Spot 1/2 medium	T3M	Light only (not dim)
	10K	100W	5000K	T3M	Spot 1/2 medium	T3M	Light only (not dim)
	10K	100W	5000K	T3M	Spot 1/2 medium	T3M	Light only (not dim)
	10K	100W	5000K	T3M	Spot 1/2 medium	T3M	Light only (not dim)

Symbol	Label	Qty	Manufacturer	Model #	SOURCE/LUMENS/COLOR TEMP	LLF	Notes
⊙	B-4 18'-0"	10	LITHONIA	DSXW1-LED-200-1000-40K-TFTM-MVOLT-XXX	LED/5,000 LUMENS/4000K	0.95	46
⊙	S1-5-4H 25'-0"	1	LITHONIA	DSX1-LED-P5-40K-TFTM-MVOLT-RPA-H5-DBLXD ON 22' ROUND TAPERED STEEL POLE IV/ 3' BASE POLE BASE - 25' TOTAL FIXTURE HEIGHT	LED/ 15,000 LUMENS/ 4000K	0.95	13B
⊙	S1-5-5 25'-0"	2	LITHONIA	DSX1-LED-P5-40K-T5W-MVOLT-RPA-H5-DBLXD ON 22' ROUND TAPERED STEEL POLE IV/ 3' BASE POLE BASE - 25' TOTAL FIXTURE HEIGHT	LED/ 15,000 LUMENS/ 4000K	0.95	13B
⊙	S1-4-2H 18'-0"	10	LITHONIA	DSX1-LED-P4-40K-T2M-MVOLT-RPA-H5-DBLXD ON 15' ROUND TAPERED STEEL POLE IV/ 3' BASE POLE BASE - 18' TOTAL FIXTURE HEIGHT	LED/ 25,000 LUMENS/ 4000K	0.95	241
⊙	S1-4-4H 18'-0"	2	LITHONIA	DSX1-LED-P4-40K-TFTM-MVOLT-RPA-H5-DBLXD ON 15' ROUND TAPERED STEEL POLE IV/ 3' BASE POLE BASE - 18' TOTAL FIXTURE HEIGHT	LED/ 25,000 LUMENS/ 4000K	0.95	241
⊙	S1-4-4H 25'-0"	2	LITHONIA	DSX1-LED-P4-40K-TFTM-MVOLT-RPA-H5-DBLXD ON 22' ROUND TAPERED STEEL POLE IV/ 3' BASE POLE BASE - 25' TOTAL FIXTURE HEIGHT	LED/ 25,000 LUMENS/ 4000K	0.95	241
⊙	S2-5-5 25'-0"	4	LITHONIA	(2)DSX1-LED-P5-40K-T5W-MVOLT-RPA-DBLXD ON 22' ROUND TAPERED STEEL POLE IV/ 3' BASE POLE BASE - 25' TOTAL FIXTURE HEIGHT	LED/ 15,000 LUMENS/ 4000K EACH	0.95	276
⊙	S2-4-5 25'-0"	6	LITHONIA	(2)DSX1-LED-P4-40K-T5W-MVOLT-RPA-DBLXD ON 22' ROUND TAPERED STEEL POLE IV/ 3' BASE POLE BASE - 25' TOTAL FIXTURE HEIGHT	LED/ 25,000 LUMENS/ 4000K EACH	0.95	382



BC PROJECT #: 20163 MISSOURI PE COA #2009003629

This drawing has been prepared by the Engineer, or under his supervision. This drawing is provided as an instrument of service to the Design Engineer and is intended for use on the project only. Pursuant to the Architectural Works Copyright Protection Act of 1990, all drawings, specifications, lists and other documents, including the overall form, arrangement and composition of spaces and elements, are hereby created the original, copyright work of the Design Engineer. Any reproduction, use, or disclosure of information contained hereon without prior written consent of the Engineer is strictly prohibited. © 2016 BC Engineers, Inc.

BC ENGINEERS INCORPORATED
5720 Reeder Shawnee, KS. 66203 (913)262-1772

A Preliminary Concept for
Detail Center
Town Center Drive and Independence Ave.
Lee's Summit, Missouri

date 02.21.2020
drawn by BH
checked by DS
revisions

sheet number
PH1
drawing type preliminary
project number 19076