

PLAN FOR
PRIVATE SANITARY AND STORM SEWER IMPROVEMENTS
& PUBLIC WATER MAIN IMPROVEMENTS
SAINT LUKE'S EAST - FLEX FACILITY EXPANSION

CITY OF LEE'S SUMMIT, MISSOURI

INDEX OF SHEETS

SHEET NO.	C300	COVER SHEET
SHEET NO.	C301	SANITARY SEWER PLAN AND PROFILE
SHEET NO.	C302-C303	STORM SEWER PLAN AND PROFILES
SHEET NO.	C304	STANDARD SANITARY SEWER DETAILS
SHEET NO.	C305	STANDARD STORM SEWER DETAILS
SHEET NO.	C401	WATER LINE PLAN AND PROFILE
SHEET NO.	C402	STANDARD WATER LINE DETAILS

GENERAL NOTES

- ALL WORKMANSHIP AND MATERIALS SHALL BE SUBJECT TO THE INSPECTION AND APPROVAL OF CITY OF LEE'S SUMMIT, MISSOURI.
- LINEAL FOOT MEASUREMENTS SHOWN ON THE PLANS ARE HORIZONTAL MEASUREMENTS, NOT SLOPE MEASUREMENTS. ALL PAYMENTS SHALL BE MADE ON HORIZONTAL MEASUREMENTS.
- THE UTILITY LOCATIONS SHOWN ON THESE PLANS ARE TAKEN FROM UTILITY COMPANY RECORDS AND ARE APPROXIMATE ONLY. THEY DO NOT CONSTITUTE ACTUAL FIELD LOCATIONS. THE CONTRACTOR SHALL VERIFY THE LOCATION AND DEPTH OF ALL UTILITIES PRIOR TO CONSTRUCTION.
- THE CONTRACTOR SHALL ADHERE TO THE PROVISIONS OF THE SENATE BILL NUMBER 583, 78TH GENERAL ASSEMBLY OF THE STATE OF MISSOURI. THE BILL REQUIRES THAT ANY PERSON OR FIRM DOING EXCAVATION ON PUBLIC RIGHT-OF-WAY DO SO ONLY AFTER GIVING NOTICE TO, AND OBTAINING INFORMATION FROM, UTILITY COMPANIES. STATE LAW REQUIRES 48 HOURS ADVANCE NOTICE. THE NAMES AND TELEPHONE NUMBERS OF UTILITY COMPANIES, EVEN IF ONLY REMOTELY INVOLVED WITH THIS PROJECT ARE AS FOLLOWS:

ELECTRIC	KANSAS CITY POWER & LIGHT CO.	888-474-5275
GAS	MISSOURI GAS ENERGY	816-756-5252
WATER	CITY OF LEE'S SUMMIT	816-969-1940
TELEPHONE AT&T		800-464-7928
SEWER	CITY OF LEE'S SUMMIT	816-969-1940
CABLE TV	TIME WARNER	816-358-8833
	COMCAST	816-833-3400

THE CONTRACTOR MAY ALSO UTILIZE THE FOLLOWING TOLL FREE PHONE NUMBER PROVIDED BY "MISSOURI ONE CALL SYSTEM, INC.": 1-(800)-DIG RITE. THIS PHONE NUMBER IS APPLICABLE ANYWHERE WITHIN THE STATE OF MISSOURI. PRIOR TO COMMENCEMENT OF WORK, THE CONTRACTOR SHALL NOTIFY ALL THOSE COMPANIES WHICH HAVE FACILITIES IN THE NEAR VICINITY OF THE CONSTRUCTION TO BE PERFORMED.

- PRIOR TO ORDERING PREFRABRICATED STRUCTURES, SHOP DRAWINGS SHALL BE SUBMITTED TO THE DESIGN ENGINEER FOR APPROVAL.
- THE CONTRACTOR SHALL PROTECT ALL MAJOR TREES FROM DAMAGE. NO TREE SHALL BE REMOVED WITHOUT PERMISSION OF THE OWNER, UNLESS SHOWN OTHERWISE.
- CLEARING AND GRUBBING OPERATIONS AND DISPOSAL OF ALL DEBRIS SHALL BE PERFORMED BY THE CONTRACTOR IN STRICT ACCORDANCE WITH ALL LOCAL CODES AND ORDINANCES.
- ALL MANHOLES, CATCH BASINS, UTILITY VALVES AND METER PITS TO BE ADJUSTED OR REBUILT TO GRADE AS REQUIRED. ALL EXISTING UTILITIES SHALL BE ADJUSTED AS REQUIRED
- ALL EXCESS AND UNSUITABLE MATERIAL SHALL BE DISPOSED OF AT A LOCATION OFF SITE PROVIDED BY THE CONTRACTOR.
- SUBGRADE SOIL FOR ALL CONCRETE STRUCTURES, REGARDLESS OF THE TYPE OR LOCATION, SHALL BE FIRM, DENSE AND THOROUGHLY COMPACTED AND CONSOLIDATED; SHALL BE FREE FROM MUCK AND MUD; AND SHALL BE SUFFICIENTLY STABLE TO REMAIN FIRM AND INTACT UNDER THE FEET OF THE WORKMEN OR MACHINERY ENGAGED IN SUBGRADE SURFACING, LAYING REINFORCING STEEL, AND DEPOSITING CONCRETE THEREON. IN ALL CASES WHERE SUBSOIL IS MUCKY OR WORKS INTO MUD OR MUCK DURING SUCH OPERATION, A SEAL COURSE OF EITHER CONCRETE OR ROCK SHALL BE PLACED BELOW SUBGRADE TO PROVIDE A FIRM BASE FOR WORKING AND FOR PLACING THE FLOOR SLAB.
- ALL EXCAVATION SHALL BE UNCLASSIFIED. NO SEPARATE PAYMENT WILL BE MADE FOR ROCK EXCAVATION.

NOTE:

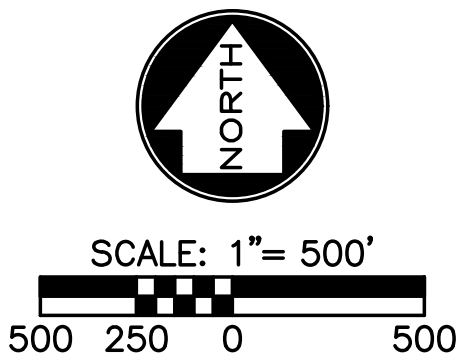
- BY USE OF THESE PLANS THE CONTRACTOR AGREES THAT HE/SHE SHALL BE SOLELY RESPONSIBLE FOR THE SAFETY OF THE CONSTRUCTION WORKERS AND OF THE PUBLIC.
- ALL CONSTRUCTION SHALL CONFORM TO THE SPECIFICATIONS SET FORTH BY THE KANSAS CITY CHAPTER OF THE AMERICAN PUBLIC WORKS ASSOCIATION AND THE CITY OF LEE'S SUMMIT, MISSOURI, WHICHEVER IS MORE STRICT.
- THE CONTRACTOR SHALL CONTACT THE CITY'S DEVELOPMENT SERVICES ENGINEERING INSPECTORS 48 HOURS PRIOR TO ANY LAND DISTURBANCE WORK AT (816)969-1200.

SPECIFICATIONS

ALL WORK PERFORMED AND MATERIALS FURNISHED WITHIN PUBLIC RIGHT-OF-WAY SHALL BE IN ACCORDANCE WITH THE REQUIREMENTS OF CITY OF LEE'S SUMMIT, MISSOURI. THE CONSTRUCTION AND MATERIALS FOR THIS PROJECT SHALL BE IN ACCORDANCE WITH THE CURRENT SPECIFICATIONS OF THE "AMERICAN PUBLIC WORKS ASSOCIATION, KANSAS CITY METROPOLITAN CHAPTER" AND ARE HEREBY MADE THE SPECIFICATIONS FOR THIS SET OF PLANS BY REFERENCE AS THOUGH FULLY SET FORTH HEREIN.



GENERAL LOCATION



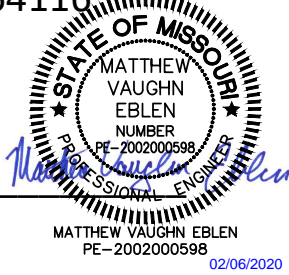
LEGAL DESCRIPTION:

ALL OF LOT 1, SAINT LUKES HOSPITAL OF LEE'S SUMMIT LOTS 1 & 2, A SUBDIVISION OF LAND IN THE CITY OF LEE'S SUMMIT, JACKSON COUNTY, MISSOURI.

PREPARED & SUBMITTED BY:

McCLURE

1700 SWIFT STREET, SUITE 100
NORTH KANSAS CITY, MISSOURI 64116



ENGINEER

DATE

ACCEPTED BY:

DATE

DESIGN ENGINEER

MATT EBLEN
1700 SWIFT AVE, SUITE 100
NORTH KANSAS CITY, MO
913-307-2588
MEBLEN@MECRESULTS.COM

SUMMARY OF QUANTITIES

ITEM DESCRIPTION	UNITS	QUANTITY
8" PVC PIPE (SDR-26)	L.F.	436
4'-0" I.D. SANITARY MANHOLE	EACH	3
15" R.C.P. (CLASS III)	L.F.	93
18" R.C.P. (CLASS III)	L.F.	108
30" R.C.P. (CLASS III)	L.F.	498
4'x4' CURB INLET	EACH	1
5'x4' CURB INLET	EACH	2
5'x5' CURB INLET	EACH	1
6'x5' CURB INLET	EACH	1
8'x5' CURB INLET	EACH	2
4'x4' AREA INLET	EACH	2
11'x3' CURB INLET CONVERTED TO JUNCTION BOX	EACH	1
STREET REPAIR & CURB REPLACEMENT	L.F.	48
CONNECTION TO EXISTING STRUCTURE	EACH	5
8" PVC C900 PIPE	L.F.	358
CONNECTIONS TO EXISTING	EACH	2
8"x6" TEE	EACH	2
8"x6" TEE AND FIRE HYDRANT	EACH	3
6" GATE VALVE	EACH	5
8" GATE VALVE	EACH	2
45° HORIZONTAL BEND	EACH	7
11 1/4° HORIZONTAL BEND	EACH	1
22 1/2° HORIZONTAL BEND	EACH	2
8" SOLID SLEEVE	EACH	2

FLOOD NOTE:

THIS PROPERTY LIES WITHIN FLOOD ZONE X, DEFINED AS AREAS OF DETERMINED TO BE OUTSIDE THE 0.2% ANNUAL CHANCE FLOODPLAIN, AS SHOWN ON THE FLOOD INSURANCE RATE MAP, PREPARED BY THE FEDERAL EMERGENCY AGENCY'S NATIONAL FLOOD INSURANCE PROGRAM FOR LEE'S SUMMIT, JACKSON COUNTY, MISSOURI, MAP NUMBER 29095C0409G AND DATED JANUARY 20, 2017.

PROJECT BENCHMARKS

BENCHMARK 1 ELEV.: 982.17
SET 5 PUNCH HOLES IN THE TOP OF A SOUTHWEST FLANGE BOLT ON A FIRE HYDRANT IN THE SOUTHEAST QUADRANT OF SOUTH RING ROAD AND DRIVE ENTRANCE SOUTHWEST OF THE HELICOPTER PAD.

BENCHMARK 2 ELEV.: 983.85
SET 5 PUNCH HOLES IN THE TOP OF A SOUTHWEST FLANGE BOLT ON A FIRE HYDRANT IN THE SOUTHEAST QUADRANT OF SOUTH RING ROAD AND PARK LOT E TO 50± DUE SOUTH OF THE SOUTHWEST CORNER OF MEDICAL OFFICE BUILDING.



1700 Swift Street, Suite 100
North Kansas City, Missouri 64116
816-756-0444

NOTICE:
McClure Engineering Company waives any and all responsibility and liability for problems which arise from failure to follow these Plans, Specifications, and the engineering intent they convey, or for problems which arise from failure to obtain and/or follow the engineers guidance with respect to any errors, omissions, inconsistencies, ambiguities, or conflicts which are alleged.

COPYRIGHT:
Copyright and property rights in these documents are expressly reserved by McClure Engineering Company. No reproductions, changes, or copies in any manner shall be made without obtaining prior written consent from McClure Engineering Company.

SAINT LUKE'S FLEX FACILITY EXPANSION PRIVATE
SANITARY SEWER, PRIVATE STORM SEWER &
PUBLIC WATER MAIN IMPROVEMENTS
LEE'S SUMMIT, MISSOURI

COVER SHEET

ISSUE DATE
11-18-2019

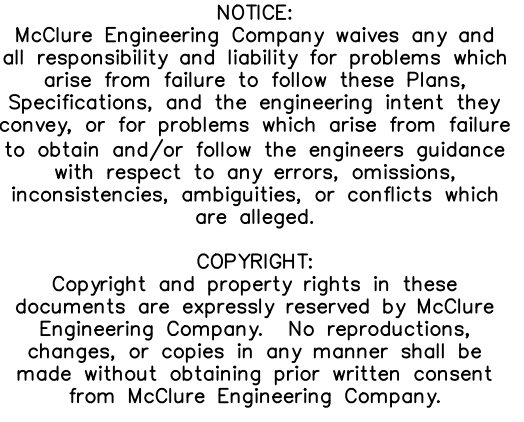
REVISIONS	
1 PER CITY COMMENTS	01-17-2020
2 PER CITY COMMENTS	01-31-2020
3 PER CITY COMMENTS	02-06-2020

ENGINEER MVE	DESIGNED BY KLJ
DRAWN BY KLJ	CHECKED BY MVE

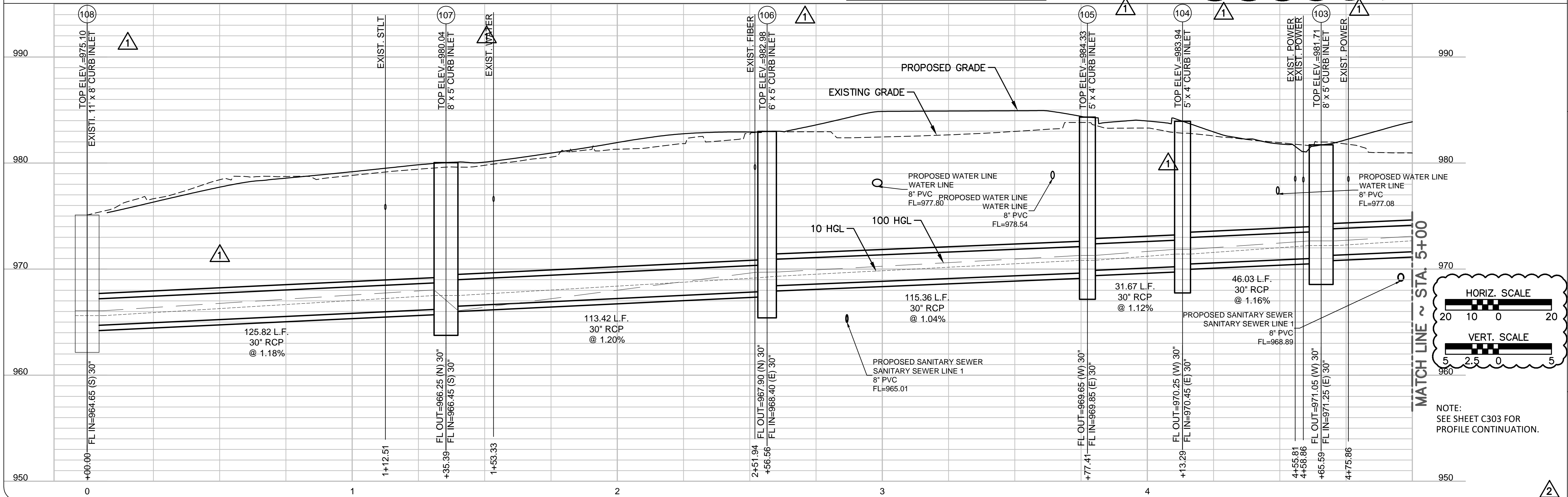
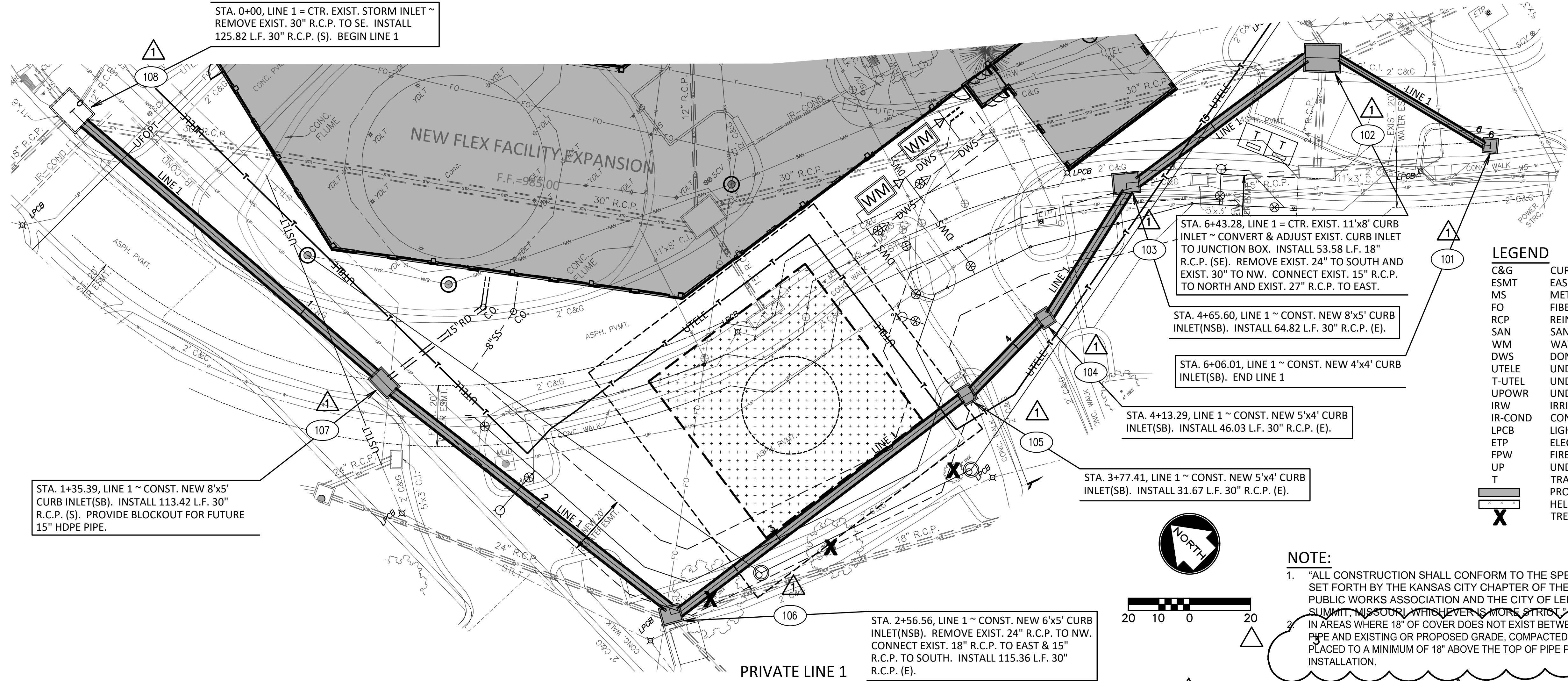
McCLURE PROJECT No.
190891-000
SHEET NO.

C300





P:\190891-000\06-DRAWINGS\CIVIL SITE UTILITIES\190891-000 STRM P&P.DWG



STA. 0+00, LINE 2 = STA. 0+00, LINE 3 = CTR.
EXIST. JUNCTION BOX ~ INSTALL 56.77 L.F. 15"
R.C.P.(SW). INSTALL 36.01 L.F. 15" R.C.P. (S).
BEGIN LINES 2 & 3

STA. 0+00, LINE 4 = CTR. EXIST. 11'x3' CURB
INLET ~ INSTALL 53.99 L.F. 18" R.C.P. (SW) &
CONST. 48 L.F. STREET & CURB REPAIR.
BEGIN LINE 4

STA. 0+41.41, LINE 3 ~ CONST. NEW
5'x5' CURB INLET(NSB). END LINE 3

REMOVE EXISTING 15" R.C.P.
AND EXISTING CURB INLET

STA. 0+60.90, LINE 2 ~ CONST. NEW 4'x4'
AREA INLET (OPENINGS TO E & W). END
LINE 2

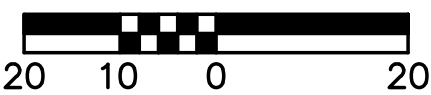
LEGEND

C&G	CURB & GUTTER
ESMT	EASEMENT
MS	METAL SIGN
FO	FIBER OPTIC
RCP	REINFORCED CONCRETE PIPE
SAN	SANITARY SEWER
WM	WATER METER
DWS	DOMESTIC WATER SERVICE
UTELE	UNDERGROUND TELEPHONE
T-UTEL	UNDERGROUND TELEPHONE
UPOWR	UNDERGROUND POWER
IRW	IRRIGATION
IR-COND	CONDUIT
LPCB	LIGHT POLE CONCRETE BASE
ETP	ELECTRIC TRANSFORMER
FPW	FIRE PROTECTION WATER
UP	UNDERGROUND POWER
T	TRANSFORMER



NOTE:

- "ALL CONSTRUCTION SHALL CONFORM TO THE SPECIFICATIONS SET FORTH BY THE KANSAS CITY CHAPTER OF THE AMERICAN PUBLIC WORKS ASSOCIATION AND THE CITY OF LEE'S SUMMIT, MISSOURI, WHICHEVER IS MORE STRICT."
- IN AREAS WHERE 18" OF COVER DOES NOT EXIST BETWEEN THE TOP OF PIPE AND EXISTING OR PROPOSED GRADE, COMPACTED FILL SHOULD BE PLACED TO A MINIMUM OF 18" ABOVE THE TOP OF PIPE PRIOR TO INSTALLATION.



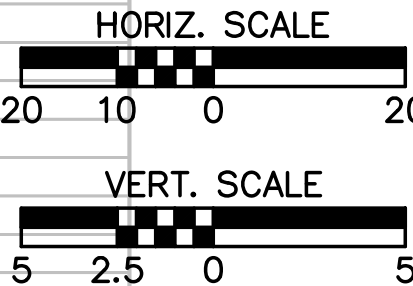
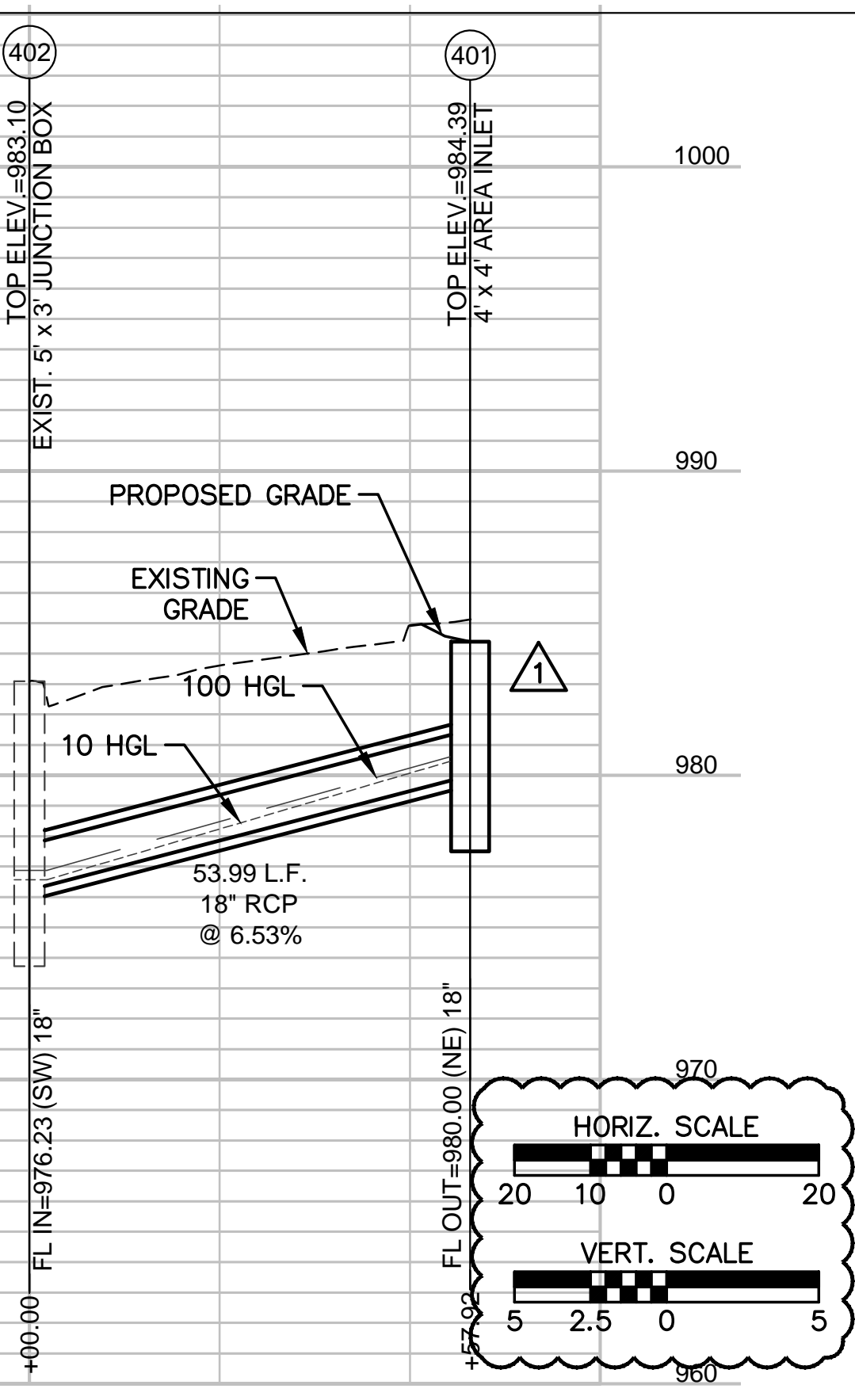
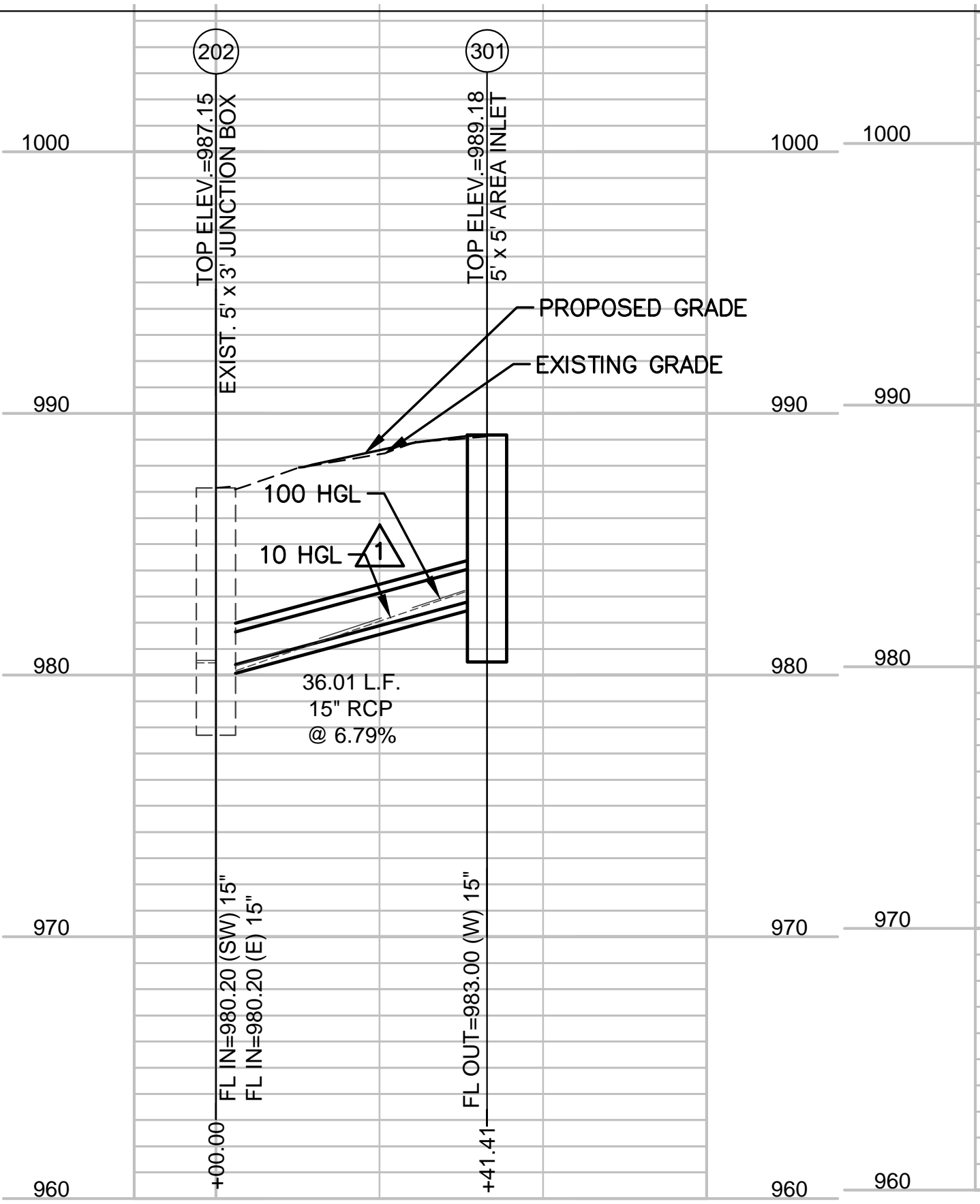
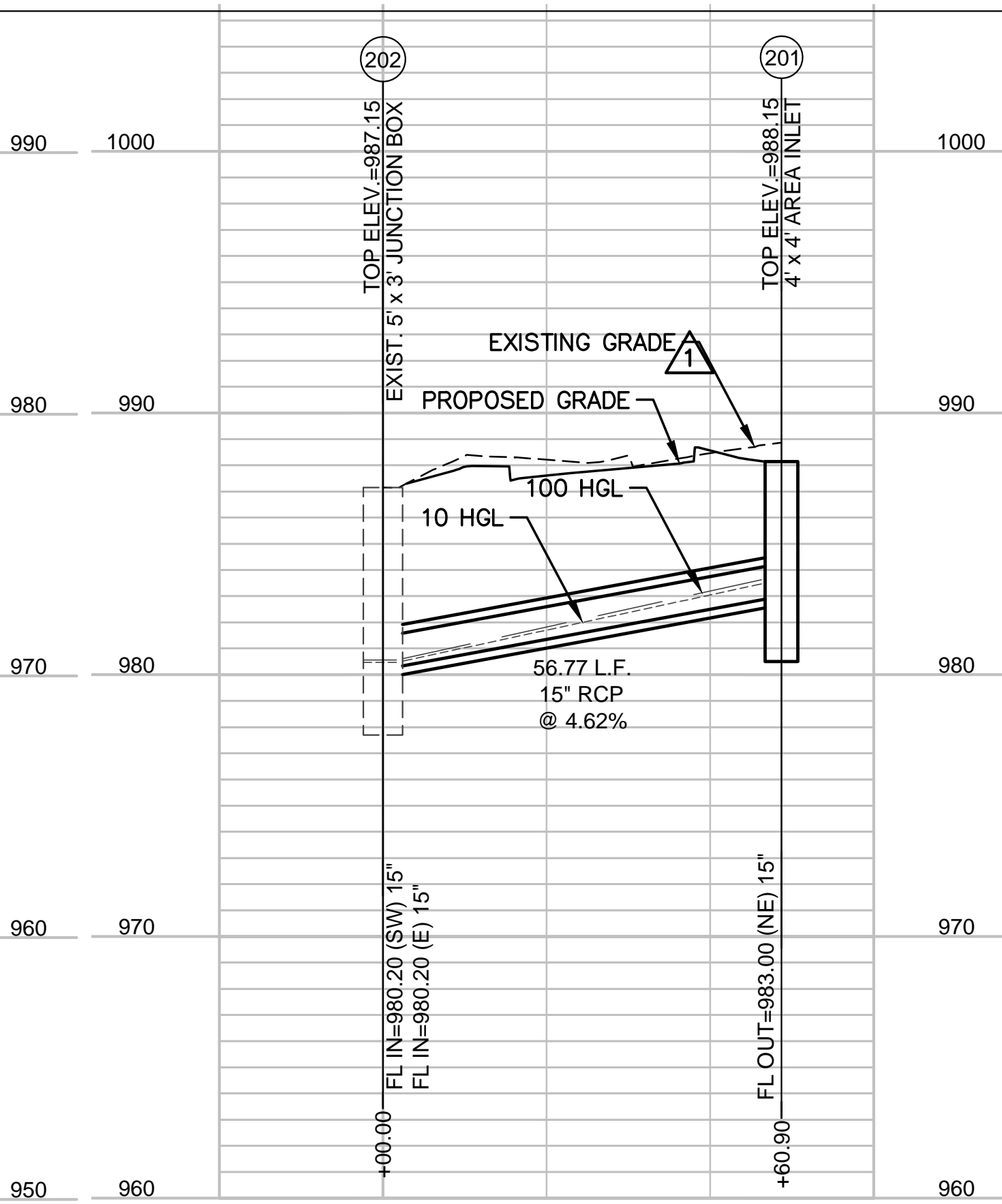
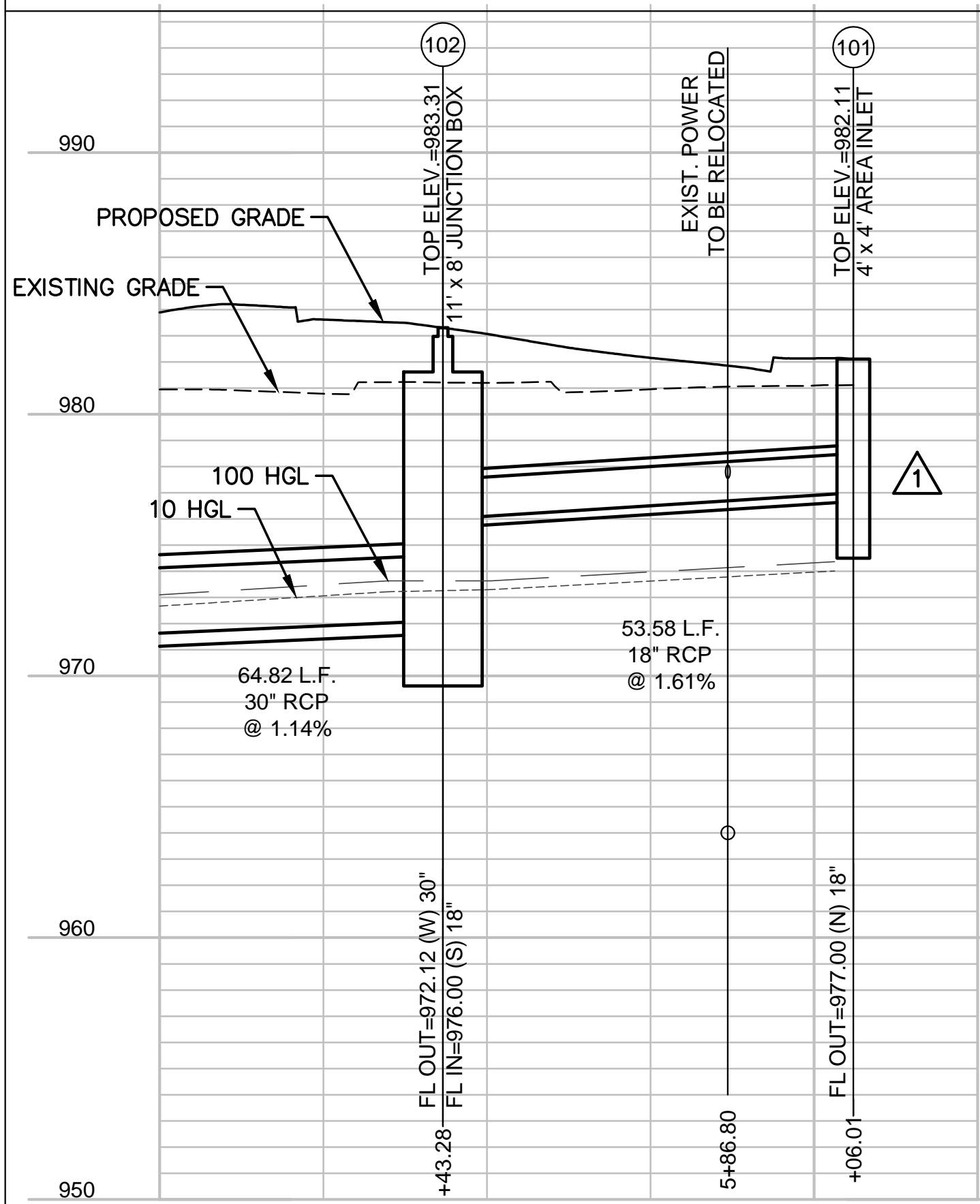
PRIVATE LINE 4



PRIVATE LINE 1

PRIVATE LINE 2

PRIVATE LINE 3



1700 Swift Street, Suite 100
North Kansas City, Missouri 64116
816-756-0444

NOTICE:
McClure Engineering Company waives any and all responsibility and liability for problems which arise from failure to follow these Plans, Specifications, and the engineering intent they convey, or for problems which arise from failure to obtain and/or follow the engineers guidance with respect to any errors, omissions, inconsistencies, ambiguities, or conflicts which are alleged.

COPYRIGHT:
Copyright and property rights in these documents are expressly reserved by McClure Engineering Company. No reproductions, changes, or copies in any manner shall be made without obtaining prior written consent from McClure Engineering Company.

SAINT LUKE'S FLEX FACILITY EXPANSION PRIVATE
SANITARY SEWER, PRIVATE STORM SEWER &
PUBLIC WATER MAIN IMPROVEMENTS
LEE'S SUMMIT, MISSOURI

STORM SEWER PLAN & PROFILES (2)



ISSUE DATE
11-18-2019

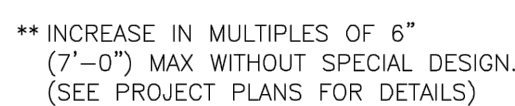
REVISIONS	
PER CITY COMMENTS	01-17-2020
PER CITY COMMENTS	01-31-2020
PER CITY COMMENTS	02-06-2020

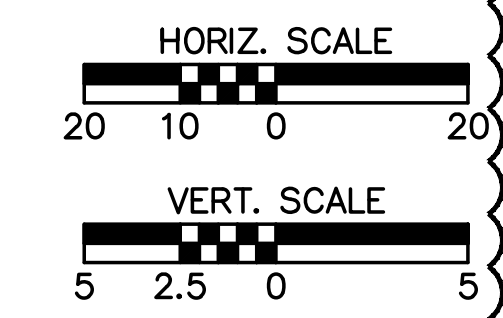
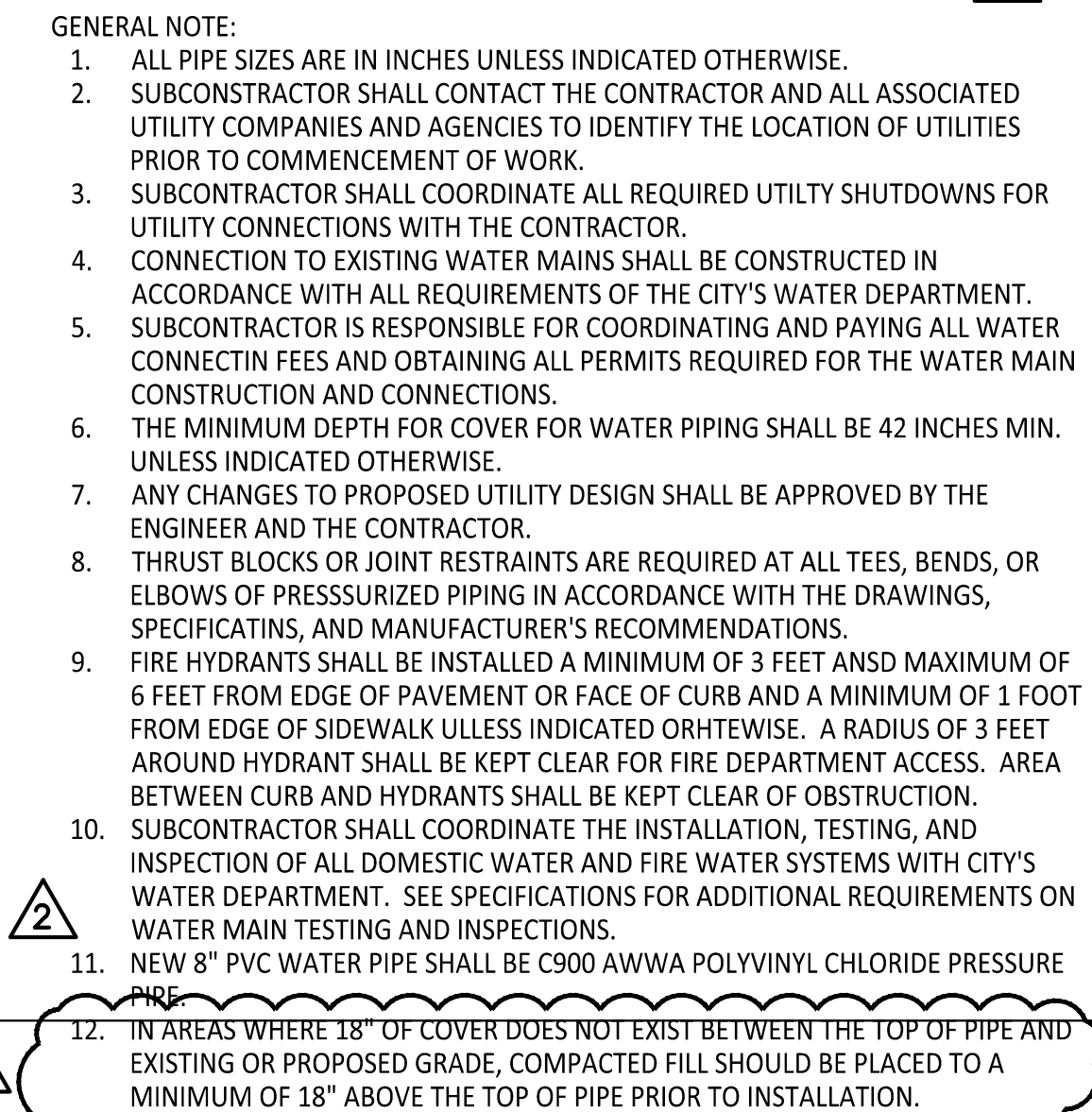
ENGINEER
MVE
DRAWN BY
KLJ

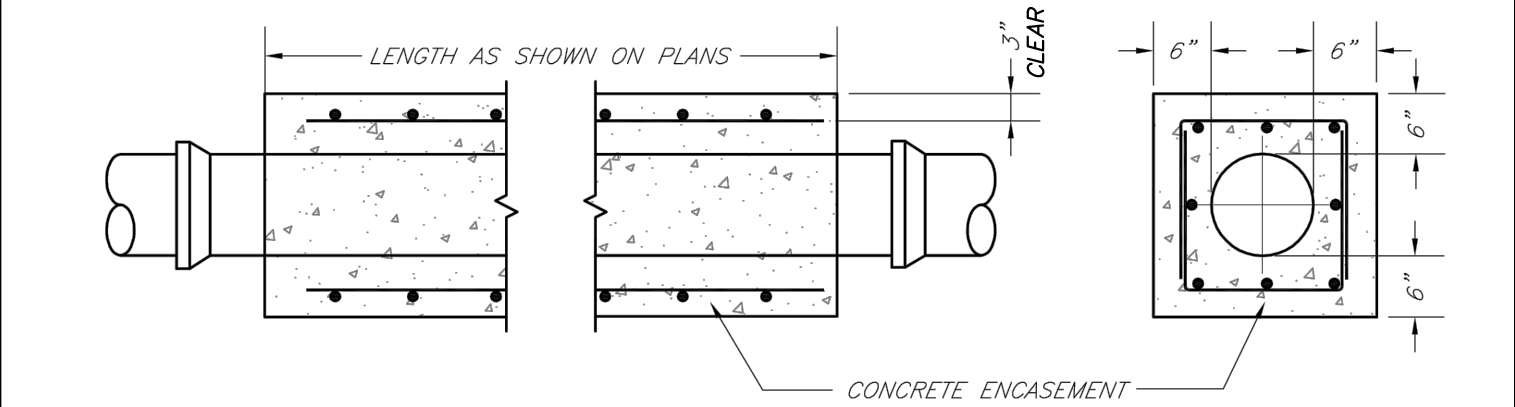
DESIGNED BY
KLJ
CHECKED BY
MVE

McCLURE PROJECT No.
190891-000
SHEET NO.

C303

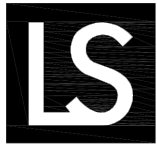
C304





NOTES:

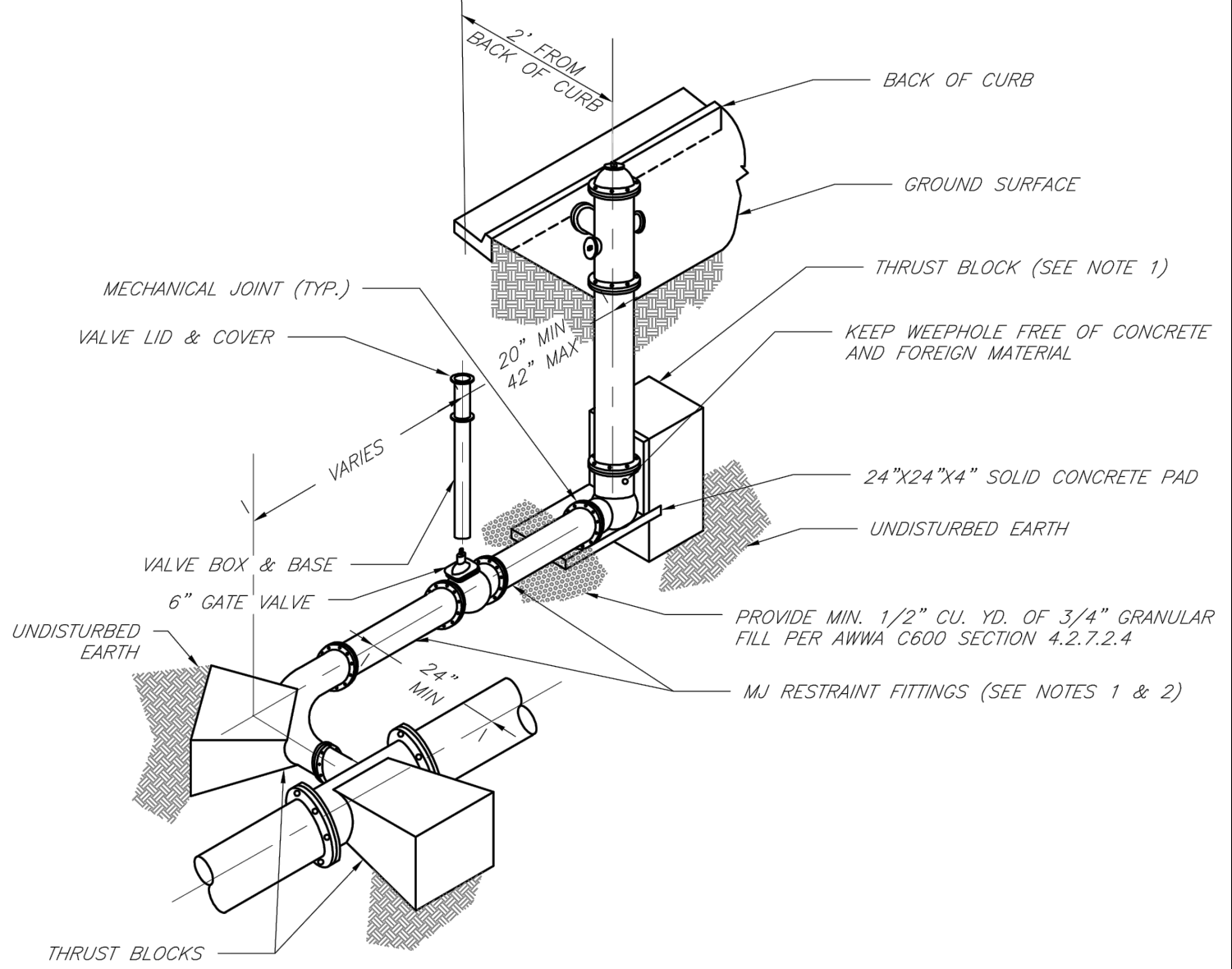
1. INTERMEDIATE BELLS SHALL BE ENCASED.
2. REINFORCING STEEL SHALL BE #4 @ 12" O.C. EACH WAY WITH A MINIMUM REBAR LAP OF 12".
3. THIS DETAIL IS FOR PIPES 12" AND SMALLER.



**LEE'S SUMMIT
MISSOURI**
PUBLIC WORKS ENGINEERING DIVISION | 220 SE GREEN STREET | LEE'S SUMMIT, MO 64063

WATER PIPE ENCASEMENT

Date: 02/13
Drawn By: JN
Checked By: DL
FILE: WAT-4
Rev: 1/14
Rev:



NOTES:

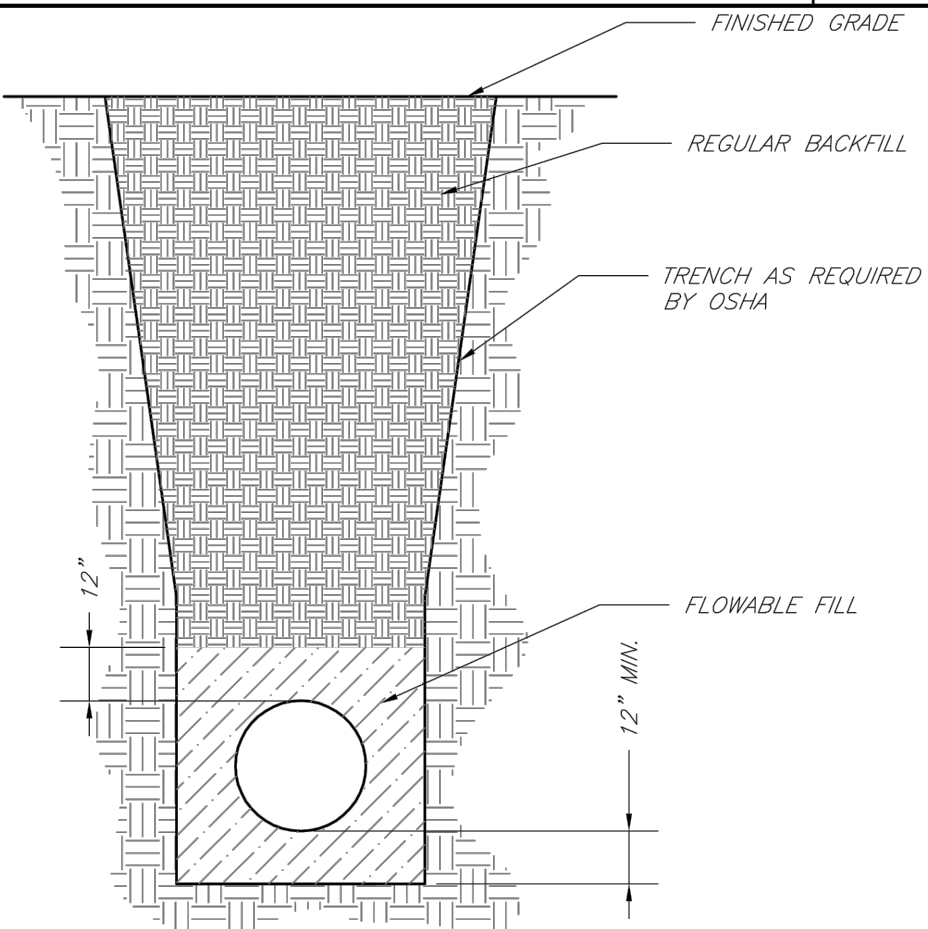
1. WHEN RETAINER GLANDS ARE USED IN LIEU OF MECHANICAL JOINT (MJ) RESTRAINT FITTINGS, HORIZONTAL THRUST BLOCKS ARE REQUIRED.
2. GATE VALVE MAY BE BOLTED DIRECTLY TO MJ RESTRAINT TEE.
3. SEE APPROVED PRODUCTS LIST FOR WATER UTILITIES FOR FIRE HYDRANT, VALVES, VALVE BOX LID, AND COVER.
4. BOTTOM HYDRANT FLANGE SHALL BE 2" TO 6" ABOVE FINISHED GRADE.
5. FOR STREETS WITHOUT CURBS FIRE HYDRANTS SHALL BE PLACED WITHIN 1 FOOT OF THE R/W LINE, BUT NOT MORE THAN 10' FROM EDGE OF PAVEMENT. FIRE HYDRANT SHALL NOT BE PLACED IN BOTTOM OF DITCH.
6. HYDRANT SHALL BE ROTATED AS DIRECTED BY INSPECTOR.



**LEE'S SUMMIT
MISSOURI**
PUBLIC WORKS ENGINEERING DIVISION | 220 SE GREEN STREET | LEE'S SUMMIT, MO 64063

HYDRANT WITH 90 DEGREE BEND

Date: 02/13
Drawn By: JN
Checked By: DL
FILE: WAT-5
Rev: 1/14
Rev:



NOTES:

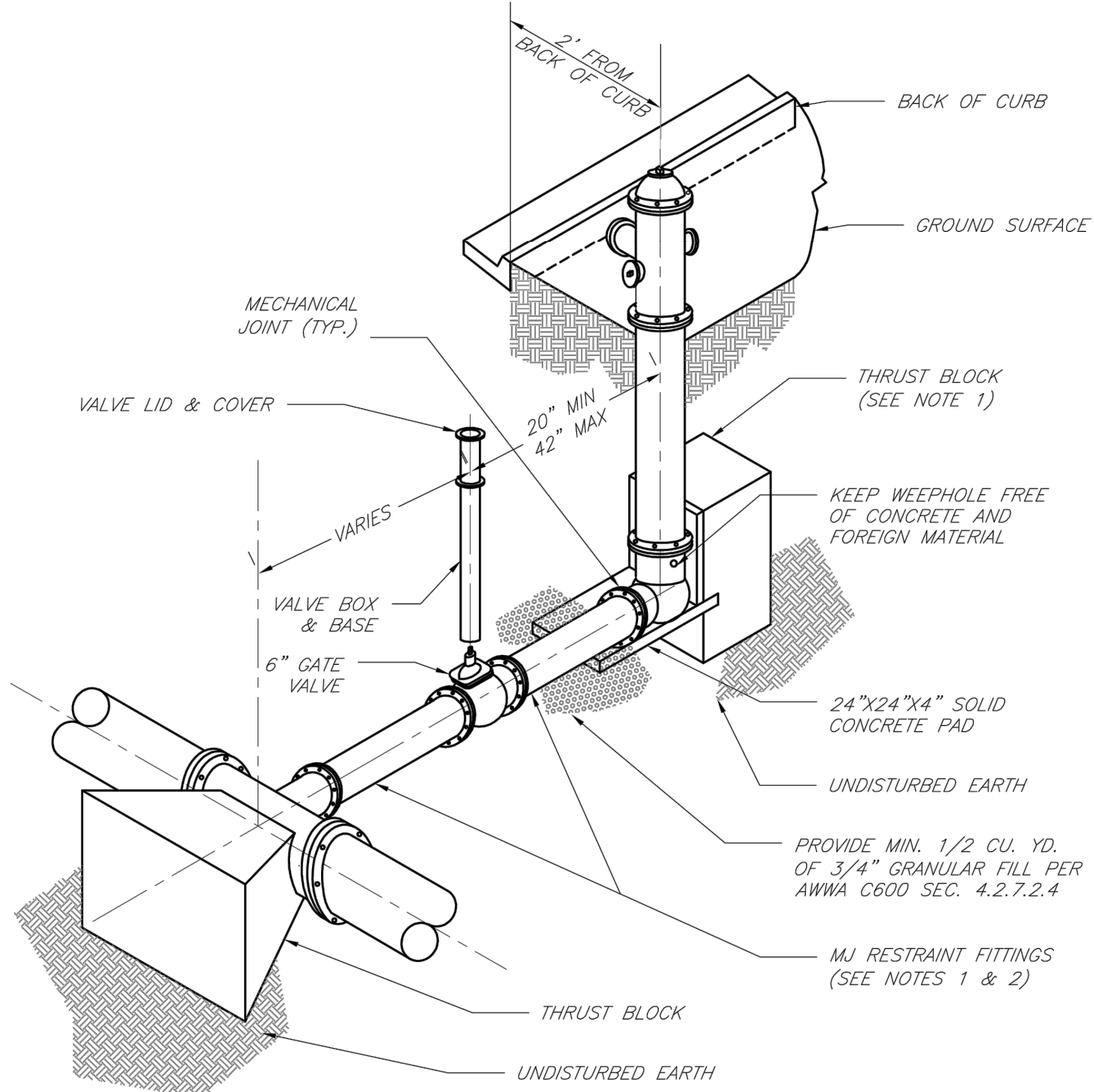
1. FLOWABLE FILL SHALL MEET THE REQUIREMENTS OF THE CITY OF LEE'S SUMMIT DESIGN AND CONSTRUCTION MANUAL.
2. REGULAR BACKFILL ABOVE THE TRENCH CHECK SHALL BE FREE OF DEBRIS, ORGANIC MATTER, AND STONES > 6" IN ANY DIMENSION.
3. TOP OF FLOWABLE BACKFILL SHALL EXTEND 12" ABOVE THE TOP OF THE PIPE.
4. LENGTH OF TRENCH CHECK SHALL BE A MINIMUM OF 12".



**LEE'S SUMMIT
MISSOURI**
PUBLIC WORKS ENGINEERING DIVISION | 220 SE GREEN STREET | LEE'S SUMMIT, MO 64063

TRENCH CHECK

Date: 02/13
Drawn By: JN
Checked By: DL
FILE: WAT-6
Rev: 1/14
Rev:



NOTES:

1. WHEN RETAINER GLANDS ARE USED IN LIEU OF MECHANICAL JOINT (MJ) RESTRAINT FITTINGS, HORIZONTAL THRUST BLOCKS ARE REQUIRED.
2. GATE VALVE MAY BE BOLTED DIRECTLY TO MJ RESTRAINT TEE.
3. SEE APPROVED PRODUCTS LIST FOR WATER UTILITIES FOR FIRE HYDRANT, VALVES, VALVE BOX LID, AND COVER.
4. BOTTOM HYDRANT FLANGE SHALL BE 2" TO 6" ABOVE FINISHED GRADE.
5. FOR STREETS WITHOUT CURBS FIRE HYDRANTS SHALL BE PLACED WITHIN 1 FOOT OF THE R/W LINE, BUT NOT MORE THAN 10' FROM EDGE OF PAVEMENT. FIRE HYDRANT SHALL NOT BE PLACED IN BOTTOM OF DITCH.
6. HYDRANT SHALL BE ROTATED AS DIRECTED BY INSPECTOR.



**LEE'S SUMMIT
MISSOURI**
PUBLIC WORKS ENGINEERING DIVISION | 220 SE GREEN STREET | LEE'S SUMMIT, MO 64063

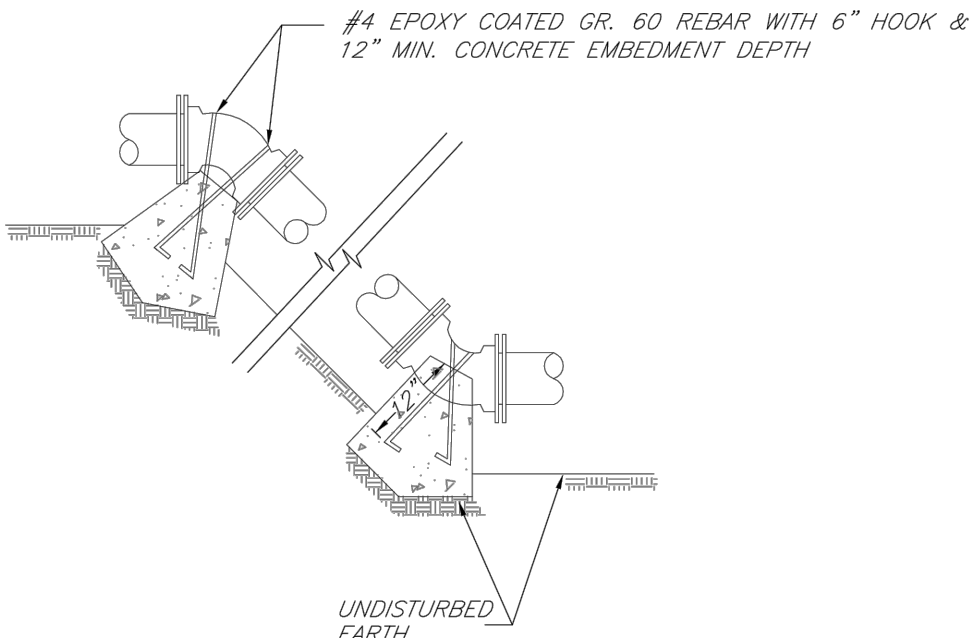
HYDRANT INSTALLATION - STRAIGHT SET

REQUIRED CONCRETE VOLUME (CUBIC FEET - CF)

NOM. DIA. (INCHES)	180 TEE, PLUG	90 BEND	45 BEND	22.5 BEND	11.25 BEND
6	50.5	71.4	38.6	19.7	9.9
8	89.9	126.9	68.7	35.0	17.6
10	140.2	198.3	107.3	54.7	27.5
12	202.0	282.0	154.6	78.8	39.6
14	278.0	382.0	210.4	107.3	53.9
16	368.0	498.0	278.0	140.1	70.4
18	472.0	632.0	358.0	177.3	89.1
20	590.0	784.0	450.0	220.0	110.0
24	864.0	1152.0	648.0	324.0	158.4

NOTES:

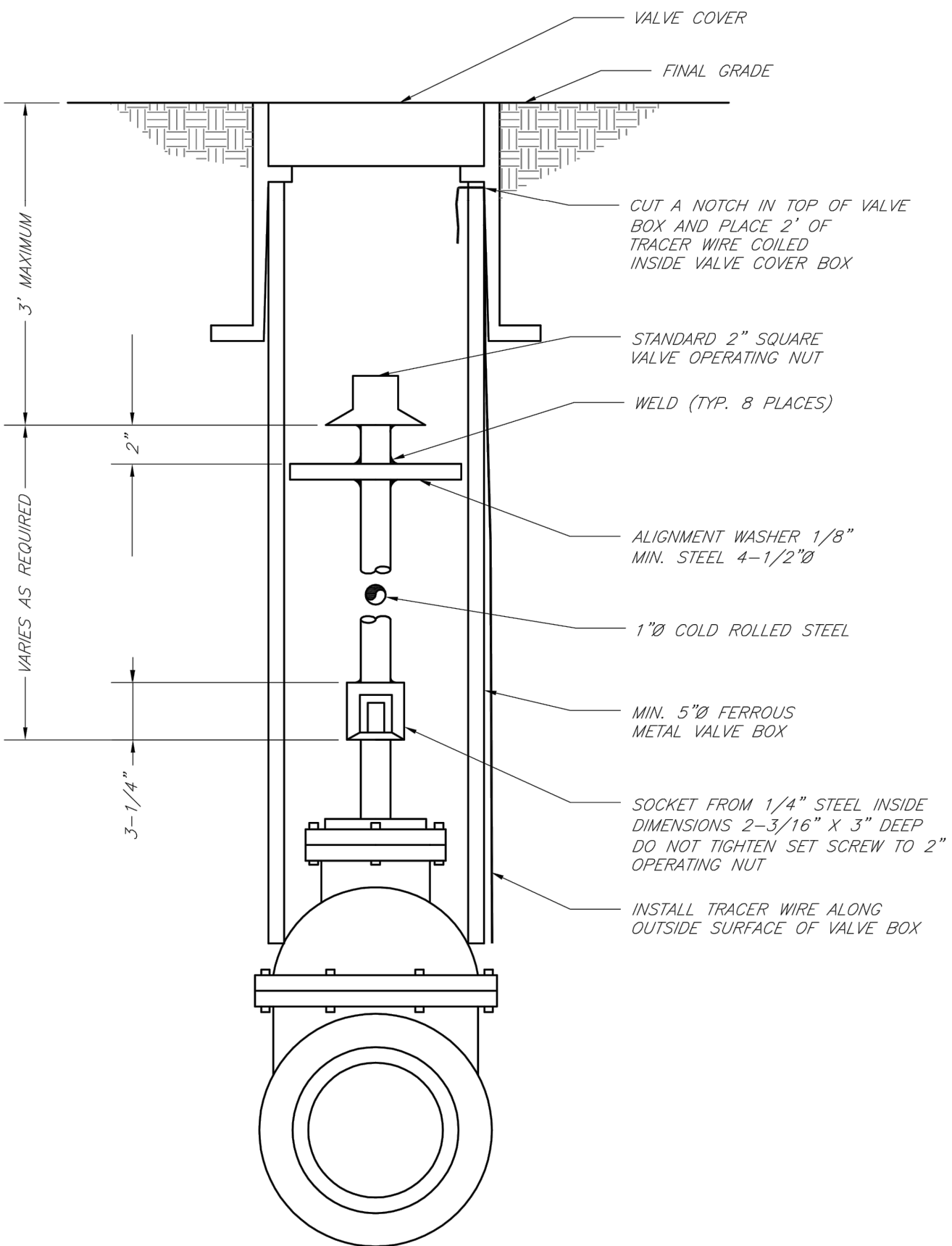
1. ALL BENDS WITHOUT RESTRAINED JOINTS SHALL HAVE CONCRETE THRUST BLOCKS INSTALLED FOR RESTRAINT.
2. MEGA LUGS MAY BE USED ONLY IN CONJUNCTION WITH CONCRETE THRUST BLOCKING.
3. BEARING AREA MUST BE AGAINST UNDISTURBED SOIL.
4. DO NOT COVER JOINTS OR BOLTS (WHERE APPLICABLE) WITH CONCRETE.



**LEE'S SUMMIT
MISSOURI**
PUBLIC WORKS ENGINEERING DIVISION | 220 SE GREEN STREET | LEE'S SUMMIT, MO 64063

VERTICAL THRUST BLOCKS

Date: 02/13
Drawn By: JN
Checked By: DL
FILE: WAT-2
Rev: 1/14
Rev:



**LEE'S SUMMIT
MISSOURI**
PUBLIC WORKS ENGINEERING DIVISION | 220 SE GREEN STREET | LEE'S SUMMIT, MO 64063

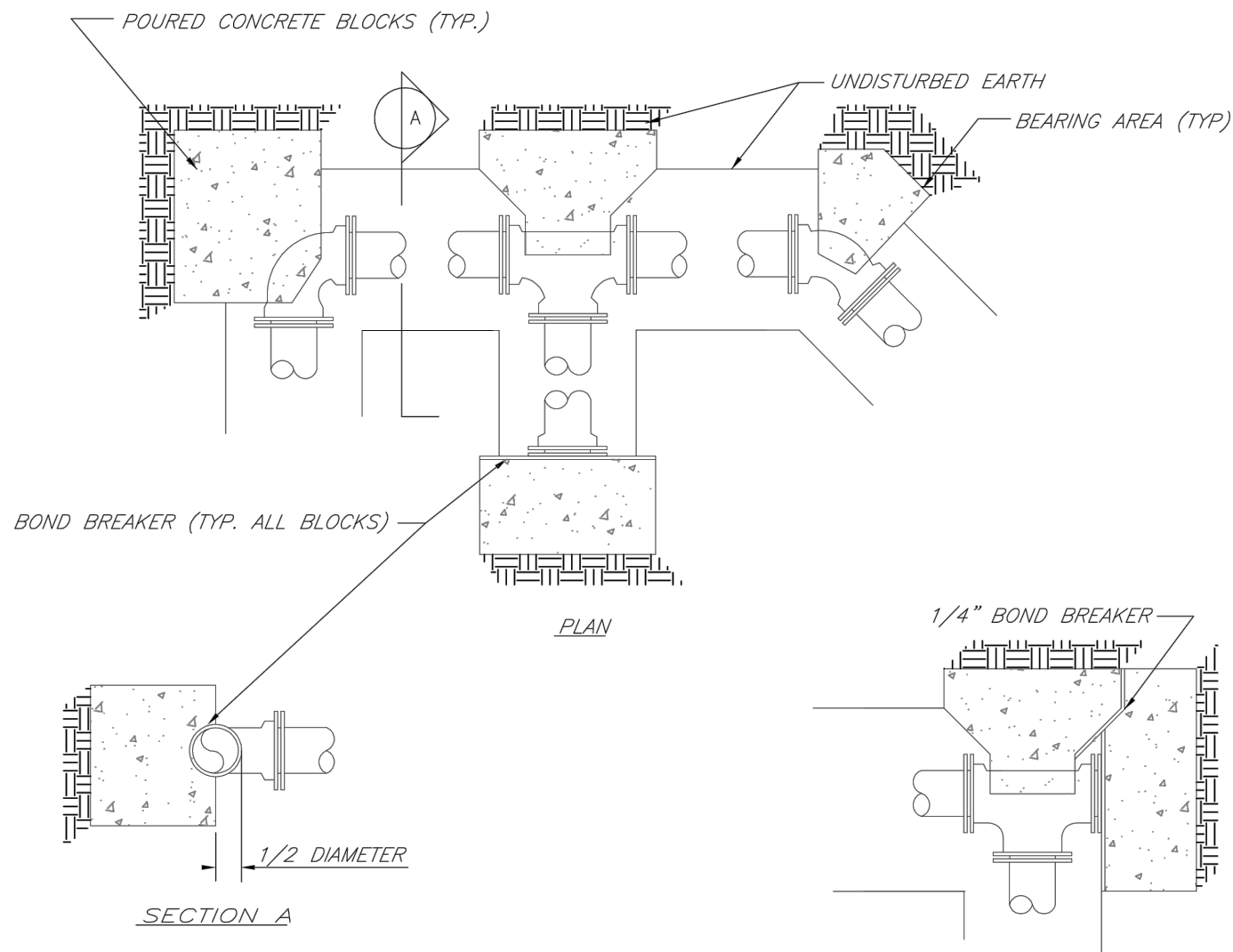
VALVE STEM EXTENSION AND VALVE BOX

REQUIRED CONCRETE BEARING AREA (SQUARE FEET - SF)

NOM. DIA. (INCHES)	180 TEE, PLUG	90 BEND	45 BEND	22.5 BEND	11.25 BEND
6	4.7	6.7	4.0	4.0	4.0
8	8.4	11.8	6.4	4.0	4.0
10	13.1	18.5	10.0	5.1	4.0
12	18.8	26.7	14.4	7.4	4.0
14	25.7	36.3	19.6	10.0	5.0
16	33.5	47.4	25.6	13.1	6.6
18	42.4	59.0	32.5	16.5	8.3
20	52.0	72.0	40.1	20.4	10.3
24	76.8	108.0	60.1	29.4	14.8

NOTES:

1. ALL BENDS WITHOUT RESTRAINED JOINTS SHALL HAVE CONCRETE THRUST BLOCKS INSTALLED FOR RESTRAINT.
2. MEGA LUGS MAY BE USED ONLY IN CONJUNCTION WITH CONCRETE THRUST BLOCKING.
3. BEARING AREA MUST BE AGAINST UNDISTURBED SOIL.
4. DO NOT COVER JOINTS OR BOLTS (WHERE APPLICABLE) WITH CONCRETE.



**LEE'S SUMMIT
MISSOURI**
PUBLIC WORKS ENGINEERING DIVISION | 220 SE GREEN STREET | LEE'S SUMMIT, MO 64063

HORIZONTAL THRUST BLOCKS

Date: 02/13
Drawn By: JN
Checked By: DL
FILE: WAT-1
Rev: 1/14
Rev:



McCLURE™

making lives better.

1700 Swift Street, Suite 100
North Kansas City, Missouri 64116
816-756-0444

NOTICE:
McClure Engineering Company waives any and all responsibility and liability for problems which arise from failure to follow these Plans, Specifications, and the engineering intent they convey, or for problems which arise from failure to obtain and/or follow the engineers guidance with respect to any errors, omissions, inconsistencies, ambiguities, or conflicts which are alleged.

COPYRIGHT:
Copyright and property rights in these documents are expressly reserved by McClure Engineering Company. No reproductions, changes, or copies in any manner shall be made without obtaining prior written consent from McClure Engineering Company.

SAINT LUKES FLEX FACILITY EXPANSION PRIVATE
SANITARY SEWER, PRIVATE STORM SEWER &
PUBLIC WATER MAIN IMPROVEMENTS
LEE'S SUMMIT, MISSOURI

STANDARD WATER LINE DETAILS



ISSUE DATE

REVISIONS

ENGINEER

MVE

DRAWN BY

KLJ

DESIGNED BY

KLJ

CHECKED BY

MVE

McCLURE PROJECT No.

190891-000

SHEET NO.

C402